

V&V Reference Report

L2 ASCDS Version : 10.1.1

Observation 53199 - L2 Version 1
Chandra X-Ray Center

L2 Processing Date : Nov 28 2013

Contents

1	Front	2
2	OBI	3
2.1	OBI	3
2.1.1	Images	3
2.1.2	Bias	3
2.1.3	Parameters	4
2.1.4	Events	4
2.2	Compared Parameters	5
2.3	Star Slots	6
2.4	FID Slots	6
A	Summary	7
A.1	Status	7
A.2	Comments	7

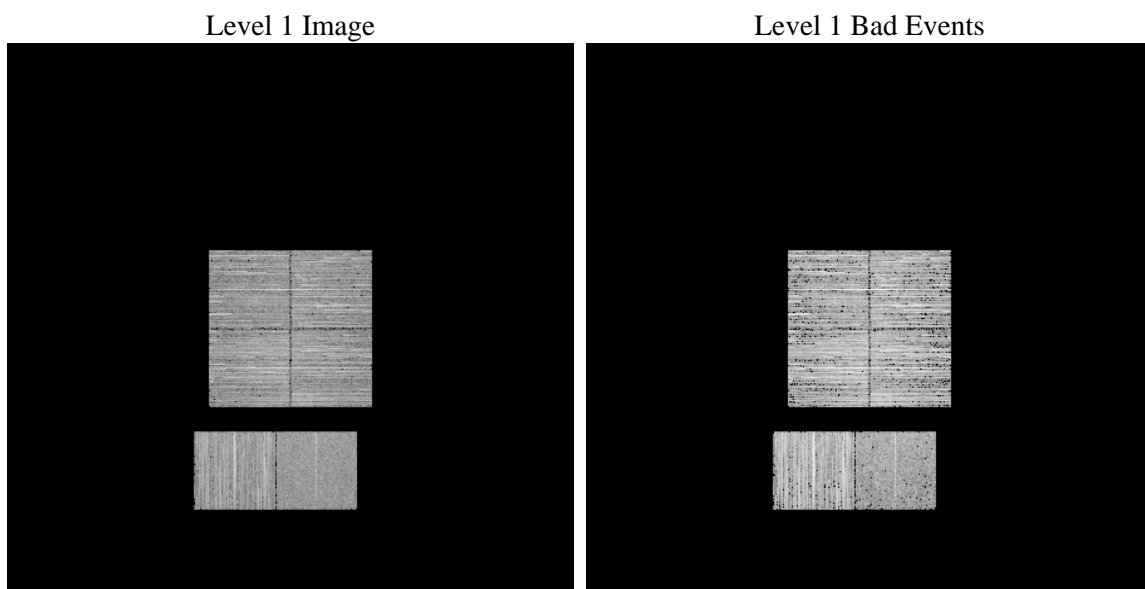
1 Front

seq_num	 	Sequence number
obs_id	53199	Observation id
title	ACIS-012367 diagnostics	Proposal title
observer	CHANDRA engineering request/realtime commanding	Principal investig
object	 	Source name
dtcycle	0	
cycle	P	events from which exps? Prim/Second/Both
ra_targ	0.0	Observer's specified target RA [deg]
dec_targ	0.0	Observer's specified target Dec [deg]
ra_nom	210.68816288323	Nominal RA [deg]
dec_nom	19.510719029132	Nominal Dec [deg]
roll_nom	40.277969117876	Nominal Roll [deg]
revision	1	Processing version of data
ontime	3334.1422861814	Sum of GTIs [s]
livetime	3291.9233689744	Livetime [s]
ontime0	3334.1012461782	Sum of GTIs [s]
ontime1	3334.0602061749	Sum of GTIs [s]
ontime2	3334.0191661716	Sum of GTIs [s]
ontime3	3334.1833261847	Sum of GTIs [s]
ontime6	3333.9781261683	Sum of GTIs [s]
ontime7	3334.1422861814	Sum of GTIs [s]
l2events	76235	Number of level 2 events

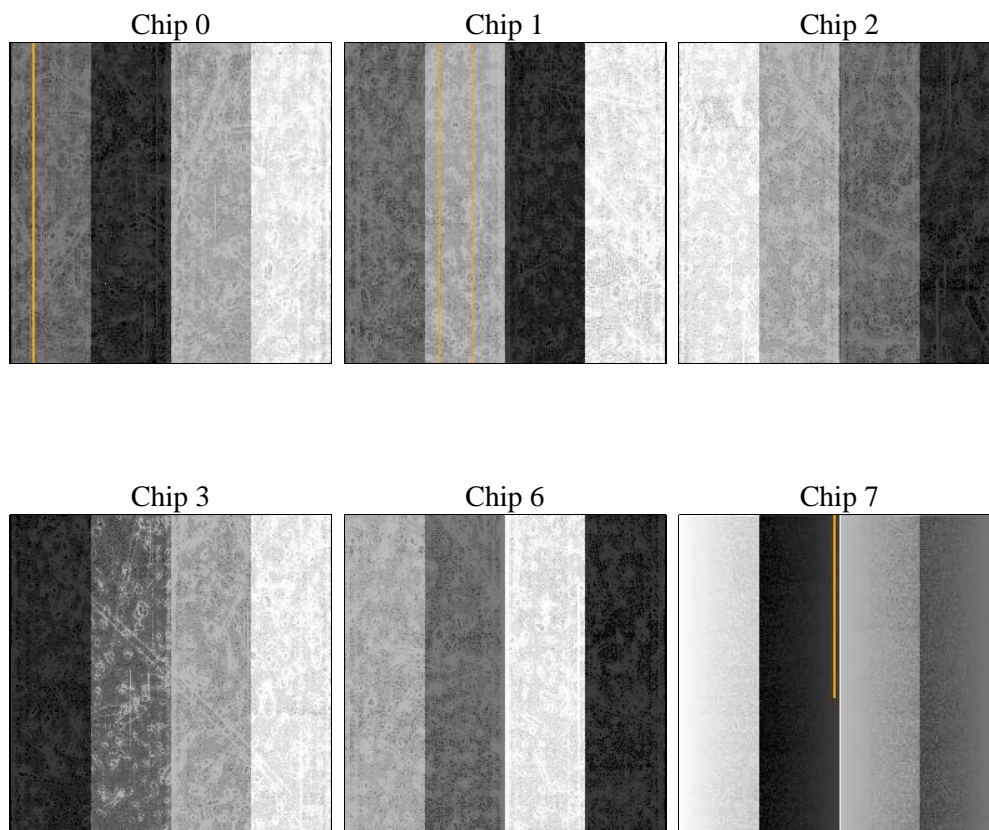
2 OBI

2.1 OBI

2.1.1 Images



2.1.2 Bias



2.1.3 Parameters

obi_num	0	Obi number	sched_exp_time	0.0	[s] Scheduled observation exposure time
ascdsver	10.1.1	Processing system revision	ontime	3334.1422861814	Sum of GTIs [s]
caldbver	4.5.9	 	ontime0	3334.1012461782	Sum of GTIs [s]
date	2013-11-28T10:54:12	Date and time of file creation	ontime1	3334.0602061749	Sum of GTIs [s]
revision	1	Processing version of data	ontime2	3334.0191661716	Sum of GTIs [s]
			ontime3	3334.1833261847	Sum of GTIs [s]
			ontime6	3333.9781261683	Sum of GTIs [s]
			ontime7	3334.1422861814	Sum of GTIs [s]
			l1events	343782	Number of level 1 events

2.1.4 Events

	ccd 0	ccd 1	ccd 2	ccd 3	ccd 6	ccd 7		ccd 0	ccd 1	ccd 2	ccd 3	ccd 6	ccd 7
level 1 events	52776	58739	61145	59746	62928	48448	grade 0 events	5843	5689	5949	6473	5915	3088
rejected events	41236	46999	49605	47667	50756	26312		11%	9%	9%	10%	9%	6%
rejected %	78%	80%	81%	79%	80%	54%	grade 1 events	40	30	37	38	29	30
								0%	0%	0%	0%	0%	0%
							grade 2 events	2274	2482	2229	2234	2540	5468
								4%	4%	3%	3%	4%	11%
							grade 3 events	784	836	779	807	783	1809
								1%	1%	1%	1%	1%	3%
							grade 4 events	804	797	820	831	785	1747
								1%	1%	1%	1%	1%	3%
							grade 5 events	1099	1102	1083	1216	1227	2918
								2%	1%	1%	2%	1%	6%
							grade 6 events	1835	1936	1763	1734	2149	10024
								3%	3%	2%	2%	3%	20%
							grade 7 events	40097	45867	48485	46413	49500	23364
								75%	78%	79%	77%	78%	48%

2.2 Compared Parameters

Parameter	Planned	Actual	Parameter	Planned	Actual
Instrument	ACIS	ACIS	Obspar format version number	7	7
Detector	ACIS-012367	ACIS-012367	Obspar file type	PREDICTED	ACTUAL
Grating	NONE	NONE	Obspar update status	NONE	UPDATED
Data mode	FAINT	FAINT	Number of optional ACIS chips dropped	0	0
Observation mode	SECONDARY	SECONDARY	On-chip summing requested	N	N
[deg] Pointing RA	0	210.6881628832349	Subarray requested	NONE	NONE
[deg] Pointing Dec	0	19.51071902913164	Alternating exposures requested	N	N
[deg] Pointing Roll	0.0	40.27796911787568	[s] Primary exposure time	3.2	3.2
[mm] SIM focus pos	-1.429586	-1.428180813131781			
[mm] SIM defocus	0.1037507710433287	0.1051558262725154			
[mm] SIM translation stage pos	250.455976	250.466033080201			
[mm] SIM translation stage offset	0	-0.01005468664627074			
[s] Observation start time (MET)	501981933.032684	501981932.00768			
Observation start date	2013-11-27T23:25:33	2013-11-27T23:25:32			
[s] Observation end time (MET)	501989013.733071	501989012.70807			
Observation end date	2013-11-28T01:23:34	2013-11-28T01:23:32			
Read mode	TIMED	TIMED			

2.3 Star Slots

2.4 FID Slots

A Summary

A.1 Status

V&V Scientist	Joy Nichols
V&V Date (YYYY-MM-DD)	2013.11.29
V&V Edition	1
V&V Disposition and Status	OK
V&V Charge Time	3.3341422861814

A.2 Comments