

V&V Reference Report

L2 ASCDS Version : 10.2.4

Observation 52589 - L2 Version 1
Chandra X-Ray Center

L2 Processing Date : Aug 1 2014

Contents

1	Front	2
2	OBI	3
2.1	OBI	3
2.1.1	Images	3
2.1.2	Bias	3
2.1.3	Parameters	4
2.1.4	Events	4
2.2	Compared Parameters	5
2.3	Star Slots	6
2.4	FID Slots	6
A	Summary	7
A.1	Status	7
A.2	Comments	7

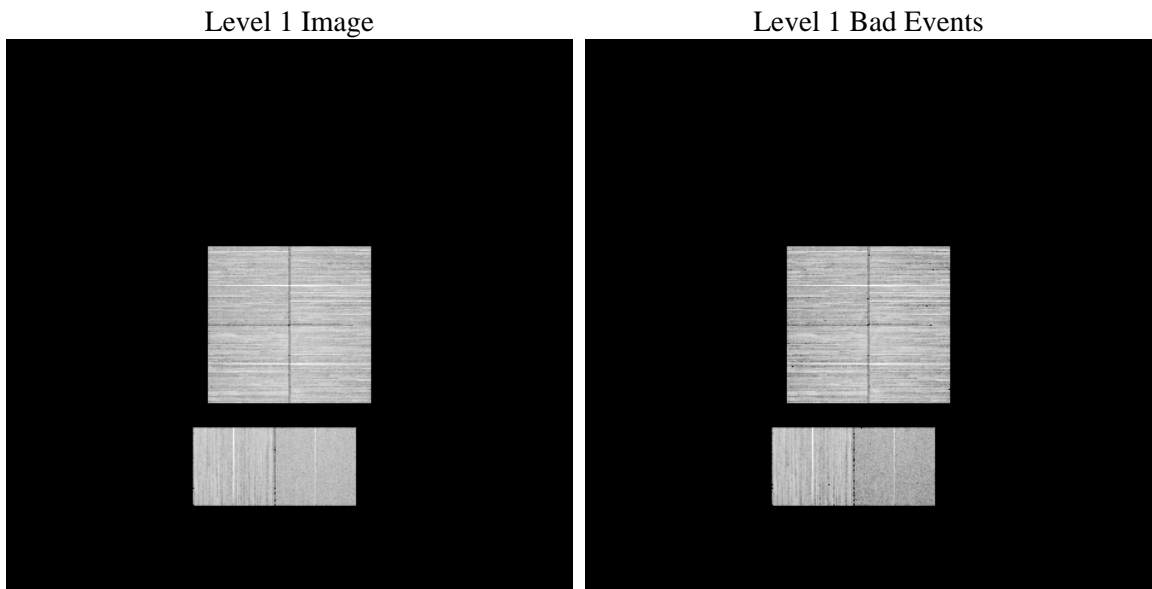
1 Front

seq_num	 	Sequence number
obs_id	52589	Observation id
title	ACIS-012367 diagnostics	Proposal title
observer	CHANDRA engineering request/realtime commanding	Principal investig
object	 	Source name
dtcycle	0	
cycle	P	events from which exps? Prim/Second/Both
ra_targ	0.0	Observer's specified target RA [deg]
dec_targ	0.0	Observer's specified target Dec [deg]
ra_nom	283.01044763194	Nominal RA [deg]
dec_nom	-27.019491629444	Nominal Dec [deg]
roll_nom	283.23038397594	Nominal Roll [deg]
revision	1	Processing version of data
ontime	8470.3999685049	Sum of GTIs [s]
livetime	8363.1426638412	Livetime [s]
ontime0	8470.3999685049	Sum of GTIs [s]
ontime1	8470.3999685049	Sum of GTIs [s]
ontime2	8470.3999685049	Sum of GTIs [s]
ontime3	8470.3999685049	Sum of GTIs [s]
ontime6	8470.3999685049	Sum of GTIs [s]
ontime7	8470.3999685049	Sum of GTIs [s]
l2events	176208	Number of level 2 events

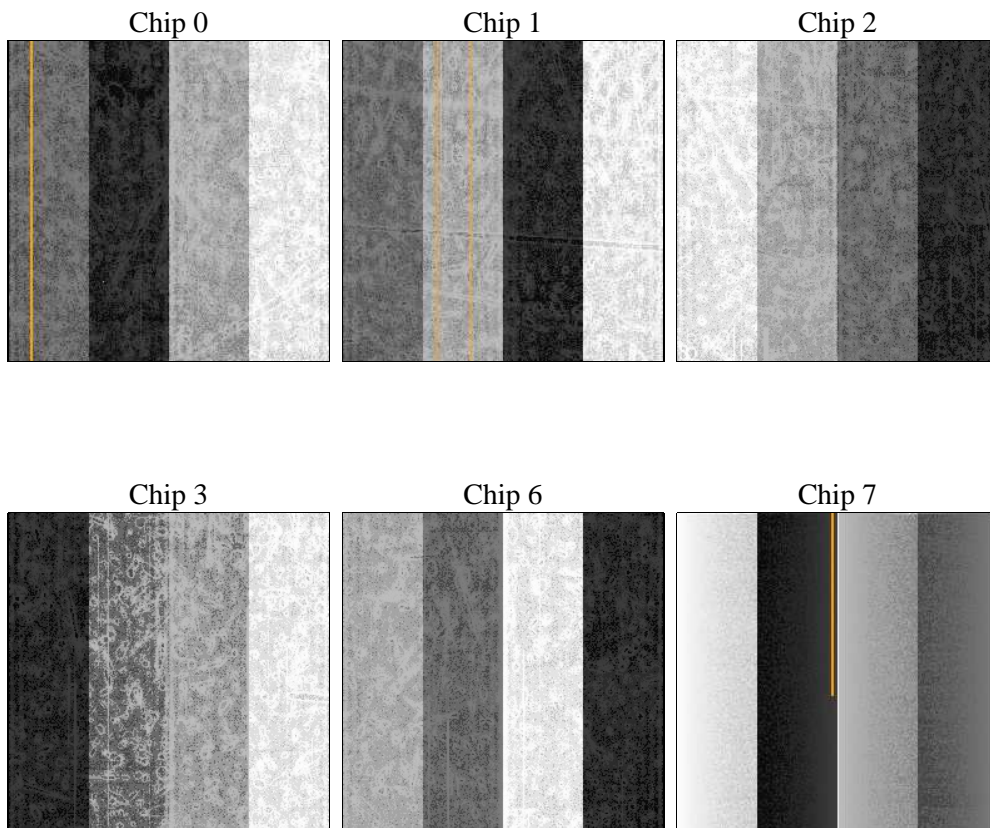
2 OBI

2.1 OBI

2.1.1 Images



2.1.2 Bias



2.1.3 Parameters

obi_num	1	Obi number	sched_exp_time	0.0	[s] Scheduled observation exposure time
ascdsver	10.2.4	Processing system revision	ontime	8470.3999685049	Sum of GTIs [s]
caldsver	4.6.2	 	ontime0	8470.3999685049	Sum of GTIs [s]
date	2014-08-01T17:43:28	Date and time of file creation	ontime1	8470.3999685049	Sum of GTIs [s]
revision	1	Processing version of data	ontime2	8470.3999685049	Sum of GTIs [s]
			ontime3	8470.3999685049	Sum of GTIs [s]
			ontime6	8470.3999685049	Sum of GTIs [s]
			ontime7	8470.3999685049	Sum of GTIs [s]
			l1events	902755	Number of level 1 events

2.1.4 Events

	ccd 0	ccd 1	ccd 2	ccd 3	ccd 6	ccd 7		ccd 0	ccd 1	ccd 2	ccd 3	ccd 6	ccd 7
level 1 events	141363	158186	161013	165879	154425	121889	grade 0 events	12899	12953	13811	13591	13089	7137
rejected events	115372	131350	134352	139239	127074	68437		9%	8%	8%	8%	8%	5%
rejected %	81%	83%	83%	83%	82%	56%	grade 1 events	68	59	79	76	62	90
								0%	0%	0%	0%	0%	0%
							grade 2 events	5309	5696	5214	5098	5577	13024
								3%	3%	3%	3%	3%	10%
							grade 3 events	1803	1819	1895	1790	1820	4235
								1%	1%	1%	1%	1%	3%
							grade 4 events	1729	1790	1789	1943	1910	4208
								1%	1%	1%	1%	1%	3%
							grade 5 events	2950	2887	2864	3207	3164	7650
								2%	1%	1%	1%	2%	6%
							grade 6 events	4251	4578	3952	4218	4955	24848
								3%	2%	2%	2%	3%	20%
							grade 7 events	112354	128404	131409	135956	123848	60697
								79%	81%	81%	81%	80%	49%

2.2 Compared Parameters

Parameter	Planned	Actual	Parameter	Planned	Actual
Instrument	ACIS	ACIS	Obspar format version number	7	7
Detector	ACIS-012367	ACIS-012367	Obspar file type	PREDICTED	ACTUAL
Grating	NONE	NONE	Obspar update status	NONE	UPDATED
Data mode	FAINT	FAINT	Number of optional ACIS chips dropped	0	0
Observation mode	SECONDARY	SECONDARY	On-chip summing requested	N	N
[deg] Pointing RA	0	283.0104476319373	Subarray requested	NONE	NONE
[deg] Pointing Dec	0	-27.0194916294435	Alternating exposures requested	N	N
[deg] Pointing Roll	0.0	283.2303839759393	[s] Primary exposure time	3.2	3.2
[mm] SIM focus pos	-1.429586	-1.428180813131781			
[mm] SIM defocus	0.1037507710433287	0.1051558262725154			
[mm] SIM translation stage pos	250.455976	250.466033080201			
[mm] SIM translation stage offset	0	-0.01005468664627074			
[s] Observation start time (MET)	523237662.604536	523237661.57954			
Observation start date	2014-07-31T23:47:43	2014-07-31T23:47:41			
[s] Observation end time (MET)	523249517.755193	523249516.73019			
Observation end date	2014-08-01T03:05:18	2014-08-01T03:05:16			
Read mode	TIMED	TIMED			

2.3 Star Slots

2.4 FID Slots

A Summary

A.1 Status

V&V Scientist	Jen Lauer
V&V Date (YYYY-MM-DD)	2014.08.01
V&V Edition	1
V&V Disposition and Status	OK
V&V Charge Time	8.4703999685049

A.2 Comments