

V&V Reference Report

L2 ASCDS Version : 10.2.4

Observation 52389 - L2 Version 1
Chandra X-Ray Center

L2 Processing Date : Oct 14 2014

Contents

1	Front	2
2	OBI	3
2.1	OBI	3
2.1.1	Images	3
2.1.2	Bias	3
2.1.3	Parameters	4
2.1.4	Events	4
2.2	Compared Parameters	5
2.3	Star Slots	6
2.4	FID Slots	6
A	Summary	7
A.1	Status	7
A.2	Comments	7

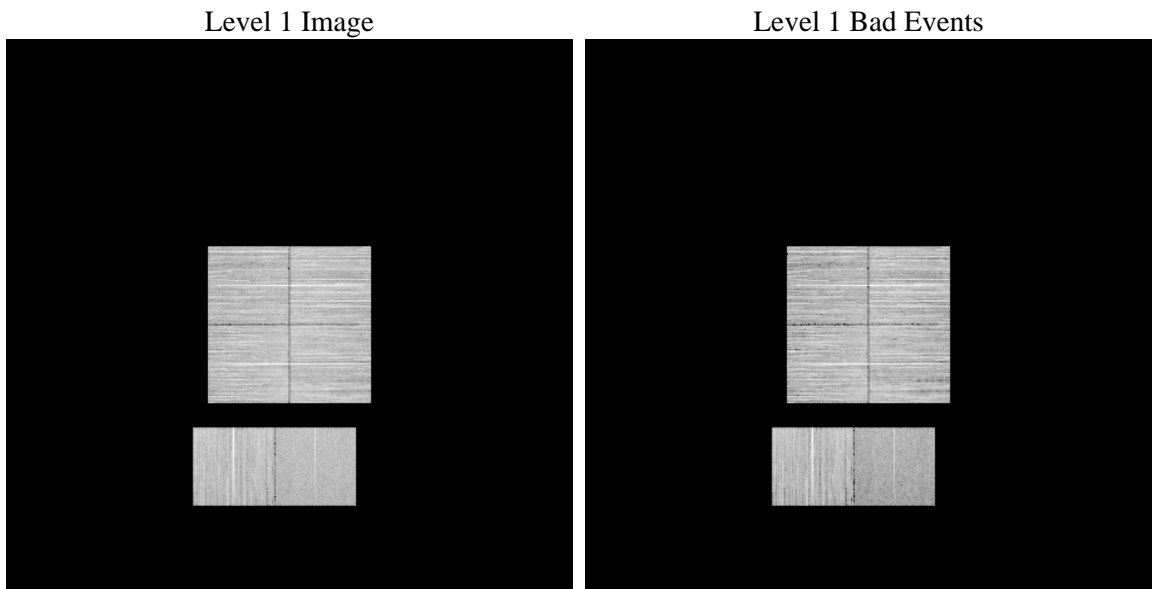
1 Front

seq_num	 	Sequence number
obs_id	52389	Observation id
title	ACIS-012367 diagnostics	Proposal title
observer	CHANDRA engineering request/realtime commanding	Principal investig
object	 	Source name
dtcycle	0	
cycle	P	events from which exps? Prim/Second/Both
ra_targ	0.0	Observer's specified target RA [deg]
dec_targ	0.0	Observer's specified target Dec [deg]
ra_nom	34.756718102471	Nominal RA [deg]
dec_nom	-12.080995046739	Nominal Dec [deg]
roll_nom	39.048955891449	Nominal Roll [deg]
revision	1	Processing version of data
ontime	8390.3999688029	Sum of GTIs [s]
livetime	8284.1556723056	Livetime [s]
ontime0	8390.3999688029	Sum of GTIs [s]
ontime1	8390.3999688029	Sum of GTIs [s]
ontime2	8390.3999688029	Sum of GTIs [s]
ontime3	8390.3999688029	Sum of GTIs [s]
ontime6	8390.3999688029	Sum of GTIs [s]
ontime7	8390.3999688029	Sum of GTIs [s]
l2events	169474	Number of level 2 events

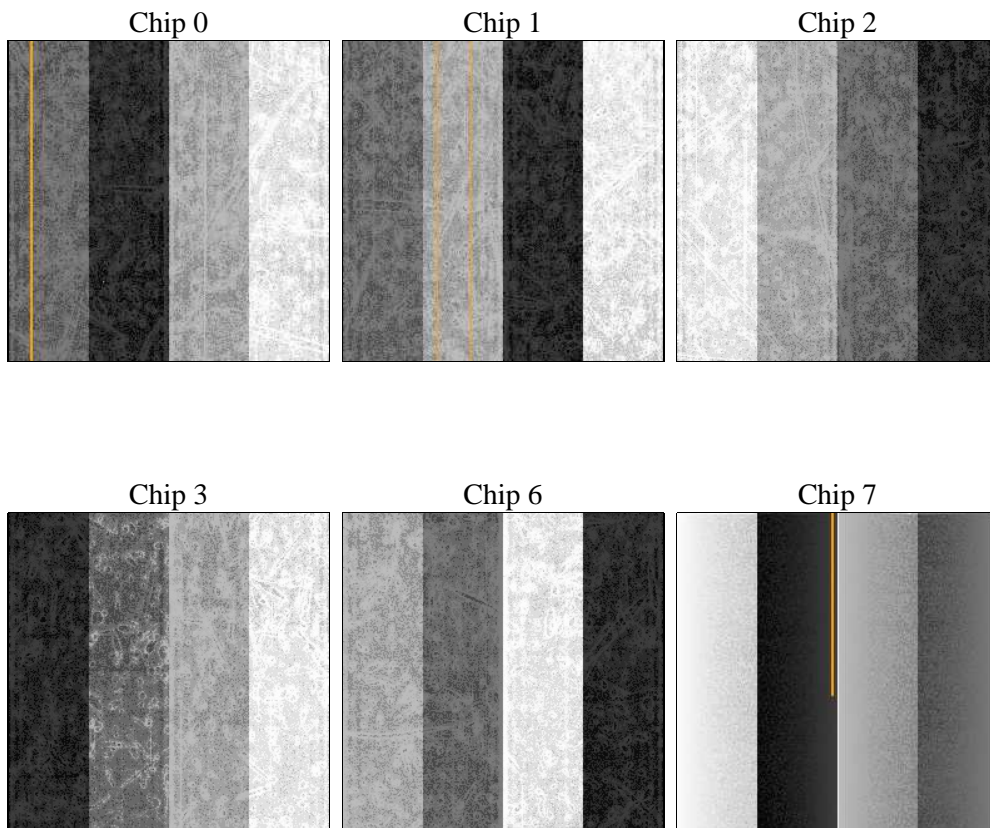
2 OBI

2.1 OBI

2.1.1 Images



2.1.2 Bias



2.1.3 Parameters

obi_num	0	Obi number	sched_exp_time	0.0	[s] Scheduled observation exposure time
ascdsver	10.2.4	Processing system revision	ontime	8390.3999688029	Sum of GTIs [s]
caldsver	4.6.3	 	ontime0	8390.3999688029	Sum of GTIs [s]
date	2014-10-14T12:51:37	Date and time of file creation	ontime1	8390.3999688029	Sum of GTIs [s]
revision	1	Processing version of data	ontime2	8390.3999688029	Sum of GTIs [s]
			ontime3	8390.3999688029	Sum of GTIs [s]
			ontime6	8390.3999688029	Sum of GTIs [s]
			ontime7	8390.3999688029	Sum of GTIs [s]
			l1events	912051	Number of level 1 events

2.1.4 Events

	ccd 0	ccd 1	ccd 2	ccd 3	ccd 6	ccd 7		ccd 0	ccd 1	ccd 2	ccd 3	ccd 6	ccd 7
level 1 events	139954	171665	163434	160457	152192	124349	grade 0 events	12396	11965	12904	12999	12492	6868
rejected events	114902	146293	138077	134999	126209	71550		8%	6%	7%	8%	8%	5%
rejected %	82%	85%	84%	84%	82%	57%	grade 1 events	74	64	87	85	64	98
								0%	0%	0%	0%	0%	0%
							grade 2 events	5180	5632	5031	4970	5428	13089
								3%	3%	3%	3%	3%	10%
							grade 3 events	1807	1733	1891	1787	1833	4303
								1%	1%	1%	1%	1%	3%
							grade 4 events	1747	1775	1741	1892	1757	4152
								1%	1%	1%	1%	1%	3%
							grade 5 events	2941	2990	2948	3276	3139	7759
								2%	1%	1%	2%	2%	6%
							grade 6 events	4151	4502	4017	4016	4726	24888
								2%	2%	2%	2%	3%	20%
							grade 7 events	111658	143004	134815	131432	122753	63192
								79%	83%	82%	81%	80%	50%

2.2 Compared Parameters

Parameter	Planned	Actual	Parameter	Planned	Actual
Instrument	ACIS	ACIS	Obspar format version number	7	7
Detector	ACIS-012367	ACIS-012367	Obspar file type	PREDICTED	ACTUAL
Grating	NONE	NONE	Obspar update status	NONE	UPDATED
Data mode	FAINT	FAINT	Number of optional ACIS chips dropped	0	0
Observation mode	SECONDARY	SECONDARY	On-chip summing requested	N	N
[deg] Pointing RA	0	34.75671810247053	Subarray requested	NONE	NONE
[deg] Pointing Dec	0	-12.08099504673879	Alternating exposures requested	N	N
[deg] Pointing Roll	0.0	39.04895589144886	[s] Primary exposure time	3.2	3.2
[mm] SIM focus pos	-1.429586	-1.428180813131781			
[mm] SIM defocus	0.1037507710433287	0.1051558262725154			
[mm] SIM translation stage pos	250.455976	250.466033080201			
[mm] SIM translation stage offset	0	-0.01005468664627074			
[s] Observation start time (MET)	529633115.609523	529633114.58452			
Observation start date	2014-10-14T00:18:36	2014-10-14T00:18:34			
[s] Observation end time (MET)	529645764.110226	529645763.08523			
Observation end date	2014-10-14T03:49:24	2014-10-14T03:49:23			
Read mode	TIMED	TIMED			

2.3 Star Slots

2.4 FID Slots

A Summary

A.1 Status

V&V Scientist	Beth Sundheim
V&V Date (YYYY-MM-DD)	2014.10.14
V&V Edition	1
V&V Disposition and Status	OK
V&V Charge Time	8.3903999688029

A.2 Comments