

# V&V Reference Report

## L2 ASCDS Version : 7.6.7.2

Observation 5179 - L2 Version 001  
Chandra X-Ray Center

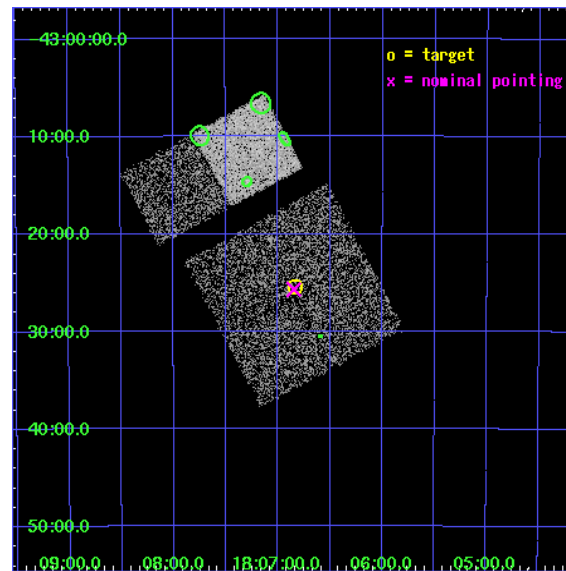
L2 Processing Date : Apr 29 2006

## Contents

<b>1</b>	<b>Front</b>	<b>2</b>
<b>2</b>	<b>OBI</b>	<b>3</b>
2.1	OBI . . . . .	3
2.1.1	Images . . . . .	3
2.1.2	Bias . . . . .	3
2.1.3	Parameters . . . . .	4
2.1.4	Events . . . . .	4
2.2	Compared Parameters . . . . .	5
2.3	Aspect . . . . .	6
2.4	Star Slots . . . . .	9
2.4.1	Slot 3 . . . . .	9
2.4.2	Slot 4 . . . . .	10
2.4.3	Slot 5 . . . . .	11
2.4.4	Slot 6 . . . . .	12
2.4.5	Slot 7 . . . . .	13
2.5	FID Slots . . . . .	14
2.5.1	Slot 0 . . . . .	14
2.5.2	Slot 1 . . . . .	15
2.5.3	Slot 2 . . . . .	16
<b>3</b>	<b>Point Sources</b>	<b>17</b>
<b>A</b>	<b>Summary</b>	<b>18</b>
A.1	Status . . . . .	18
A.2	Comments . . . . .	18

# 1 Front

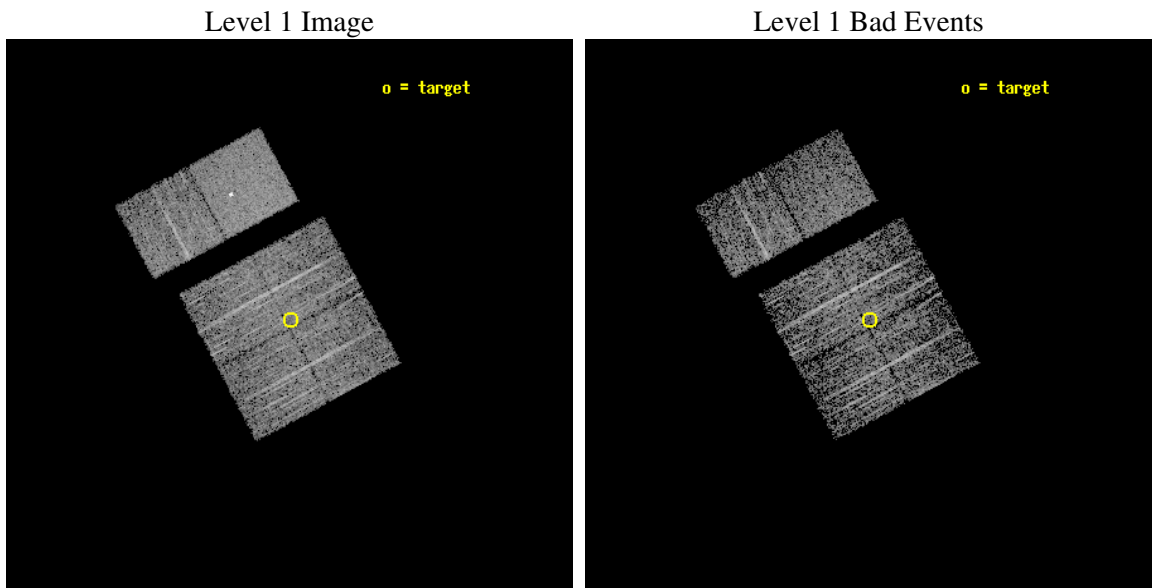
seq_num	200287
obs_id	5179
title	Alternate - Search for beta Pic analogs extension
observer	Professor Gordon Garmire
object	HR 6749
dtcycle	0
cycle	P
ra_targ	271.707917
dec_targ	-43.425
ra_nom	271.71190489679
dec_nom	-43.428500861472
roll_nom	331.77197849575
revision	2
ontime	2863.9999893308
livetime	2827.7342969721
ontime0	2863.9999893308
ontime1	2863.9999893308
ontime2	2863.9999893308
ontime3	2863.9999893308
ontime6	2863.9999893308
ontime7	2863.9999893308
l2events	22680



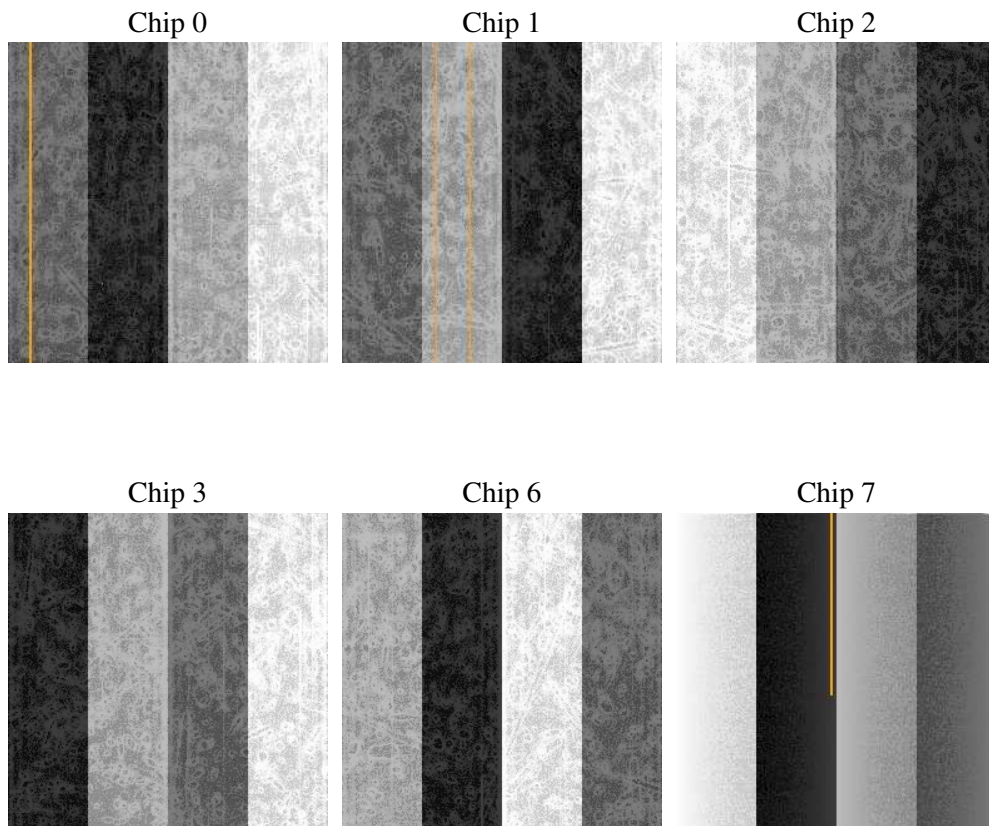
## 2 OBI

### 2.1 OBI

#### 2.1.1 Images



#### 2.1.2 Bias



### 2.1.3 Parameters

obi_num	1
ascdsver	7.6.7.2
caldsver	3.2.1
date	2006-04-29T07:31:51
revision	2

sched_exp_time	2903.000000
ontime	2868.2951673269
ontime0	2868.2951673269
ontime1	2868.2951673269
ontime2	2868.2951673269
ontime3	2868.2951673269
ontime6	2868.2951673269
ontime7	2868.2951673269
l1events	135263

### 2.1.4 Events

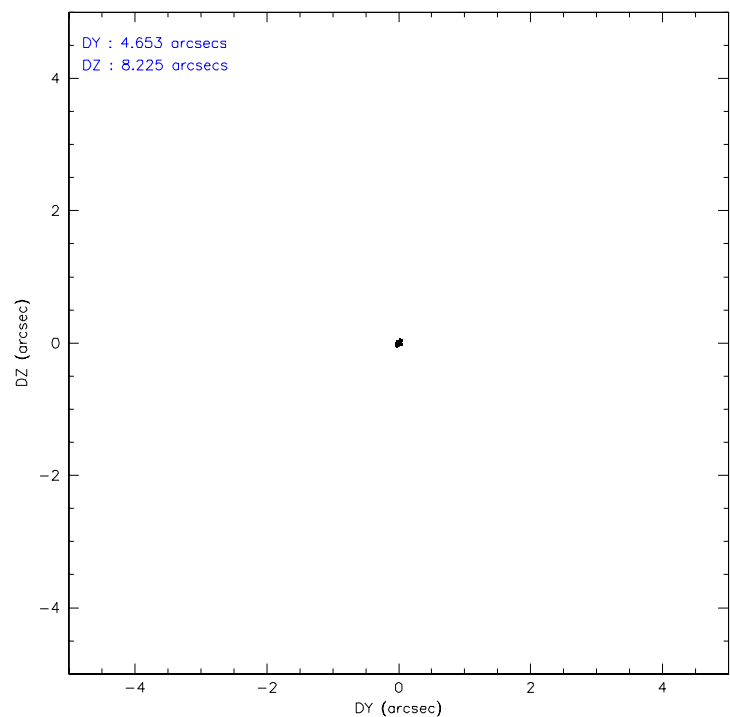
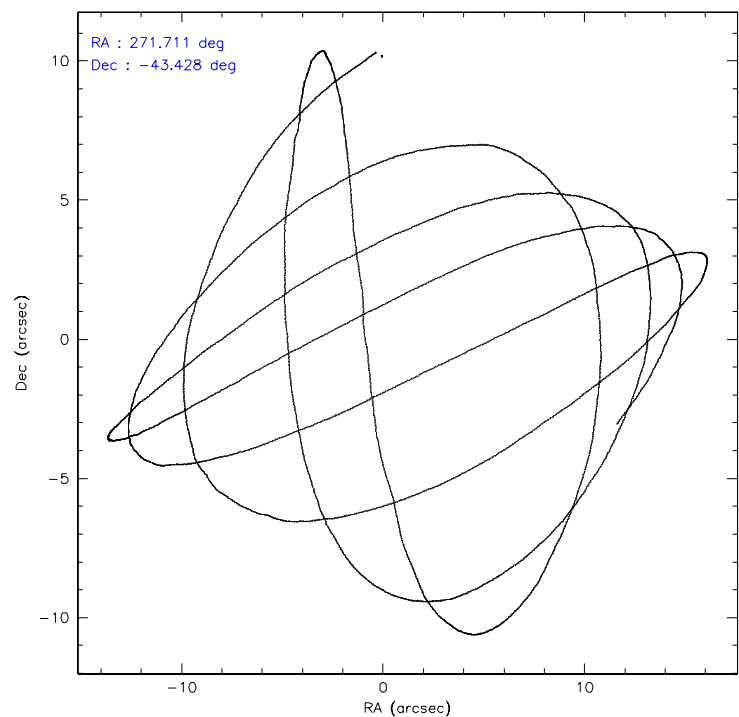
	ccd 0	ccd 1	ccd 2	ccd 3	ccd 6	ccd 7
level 1 events	20190	19862	22852	21122	21569	29668
rejected events	17418	17008	20233	18475	18898	17569
rejected %	86%	85%	88%	87%	87%	59%

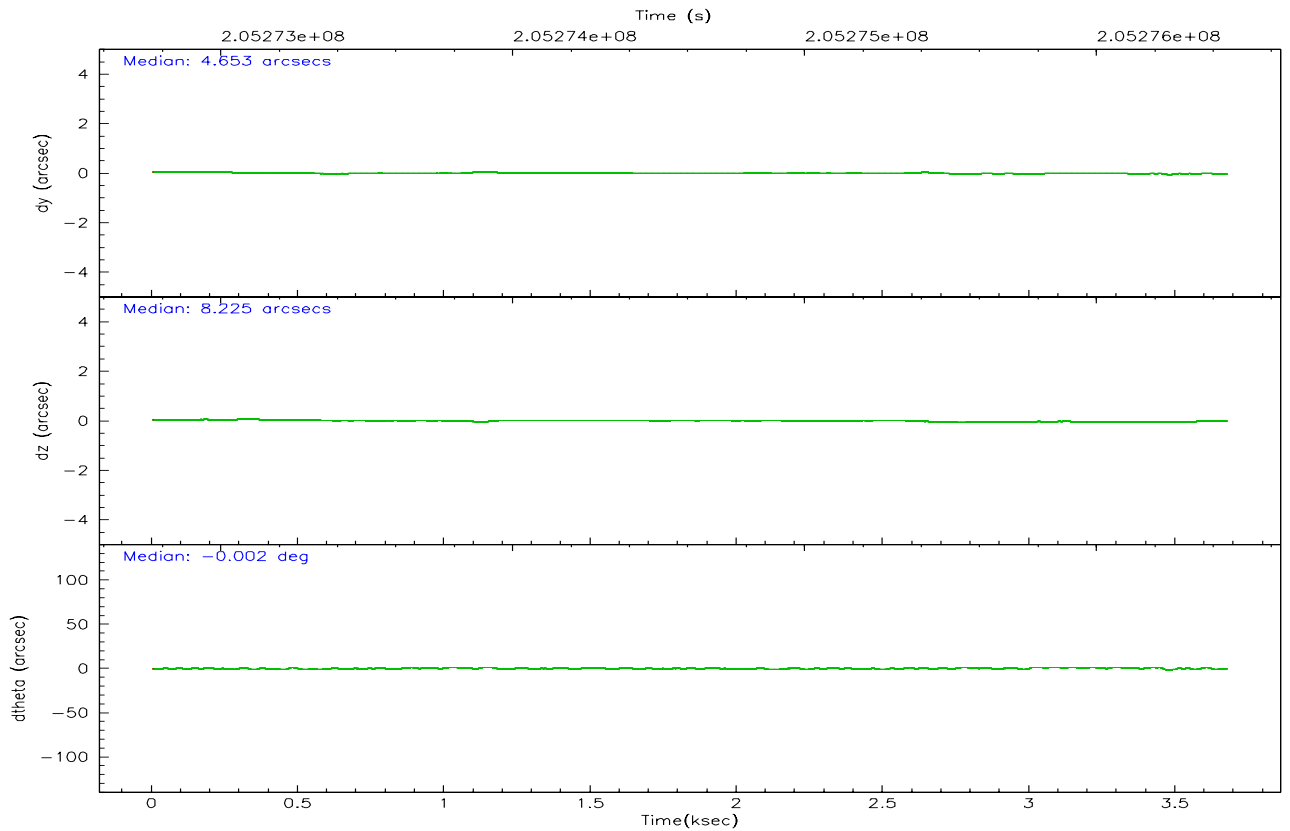
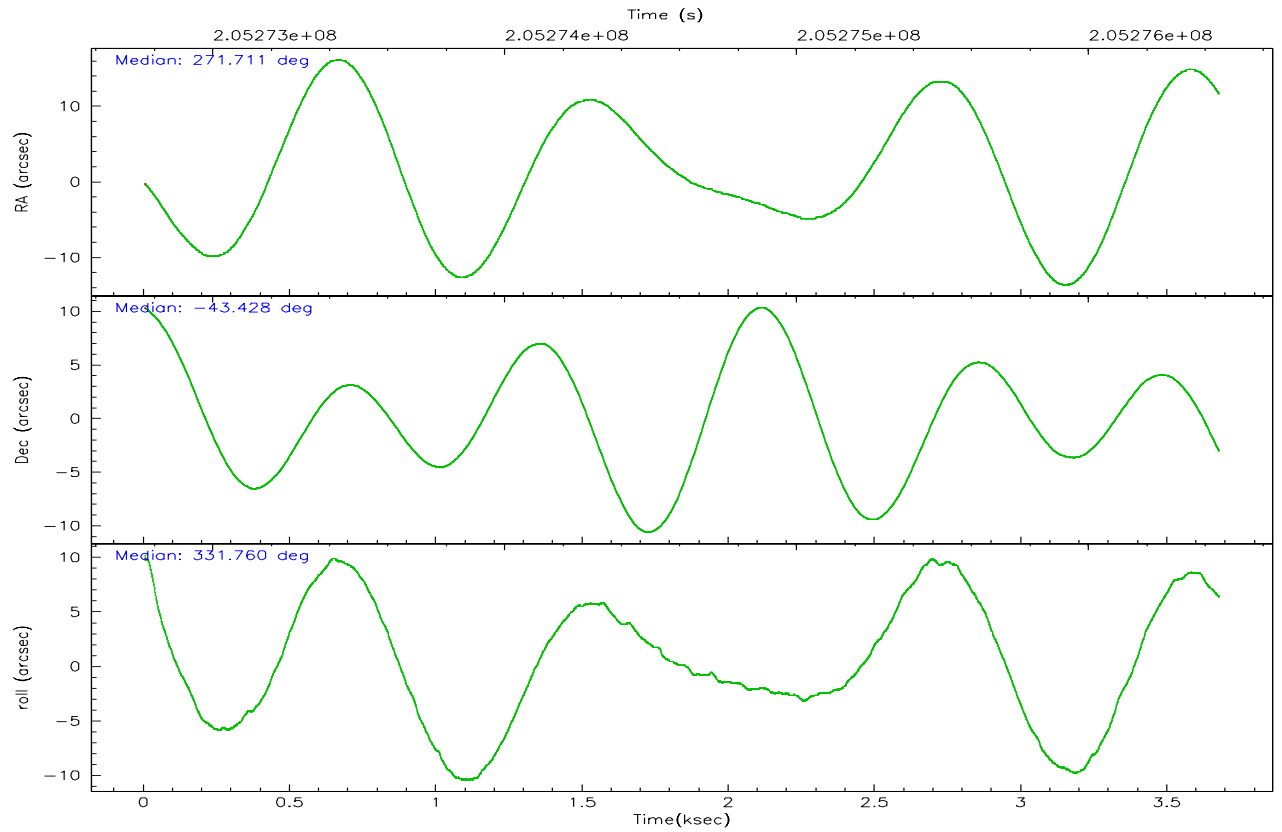
	ccd 0	ccd 1	ccd 2	ccd 3	ccd 6	ccd 7
grade 0 events	1248	1227	1225	1225	1204	1626
	6%	6%	5%	5%	5%	5%
grade 1 events	21	15	14	8	8	18
	0%	0%	0%	0%	0%	0%
grade 2 events	567	560	503	487	482	2754
	2%	2%	2%	2%	2%	9%
grade 3 events	247	262	247	254	254	590
	1%	1%	1%	1%	1%	1%
grade 4 events	248	289	236	235	260	600
	1%	1%	1%	1%	1%	2%
grade 5 events	871	937	852	952	989	1858
	4%	4%	3%	4%	4%	6%
grade 6 events	466	519	410	449	471	6546
	2%	2%	1%	2%	2%	22%
grade 7 events	16522	16053	19365	17512	17901	15676
	81%	80%	84%	82%	82%	52%

## 2.2 Compared Parameters

Parameter	Planned	Actual	Parameter	Planned	Actual
Instrument	ACIS	ACIS	Obspar format version number	6	6
Detector	ACIS-012367	ACIS-012367	Obspar file type	PREDICTED	ACTUAL
Grating	NONE	NONE	Obspar update status	NONE	UPDATED
Data mode	FAINT	FAINT	On-chip summing requested	N	N
Observation mode	POINTING	POINTING	Subarray requested	NONE	NONE
Pointing RA	271.674232	271.711904896787	Alternating exposures requested	N	N
Pointing Dec	-43.429564	-43.42850086147155	Primary exposure time	0.000000	3.2
Pointing Roll	331.537380	331.7719784957473			
SIM focus pos (mm)	-0.782348	-0.7809083437167272			
SIM defocus (mm)	0	0.001439871863259334			
SIM translation stage pos (mm)	-233.592463	-233.5874344608287			
SIM translation stage offset (mm)	0	-0.005018542100998502			
Observation start time	205273545.184000	205272293.97481			
Observation start date	2004-07-03T20:24:41	2004-07-03T20:04:53			
Observation end time	205276448.184000	205277249.33753			
Observation end date	2004-07-03T21:13:04	2004-07-03T21:27:29			
Read mode	TIMED	TIMED			

## 2.3 Aspect





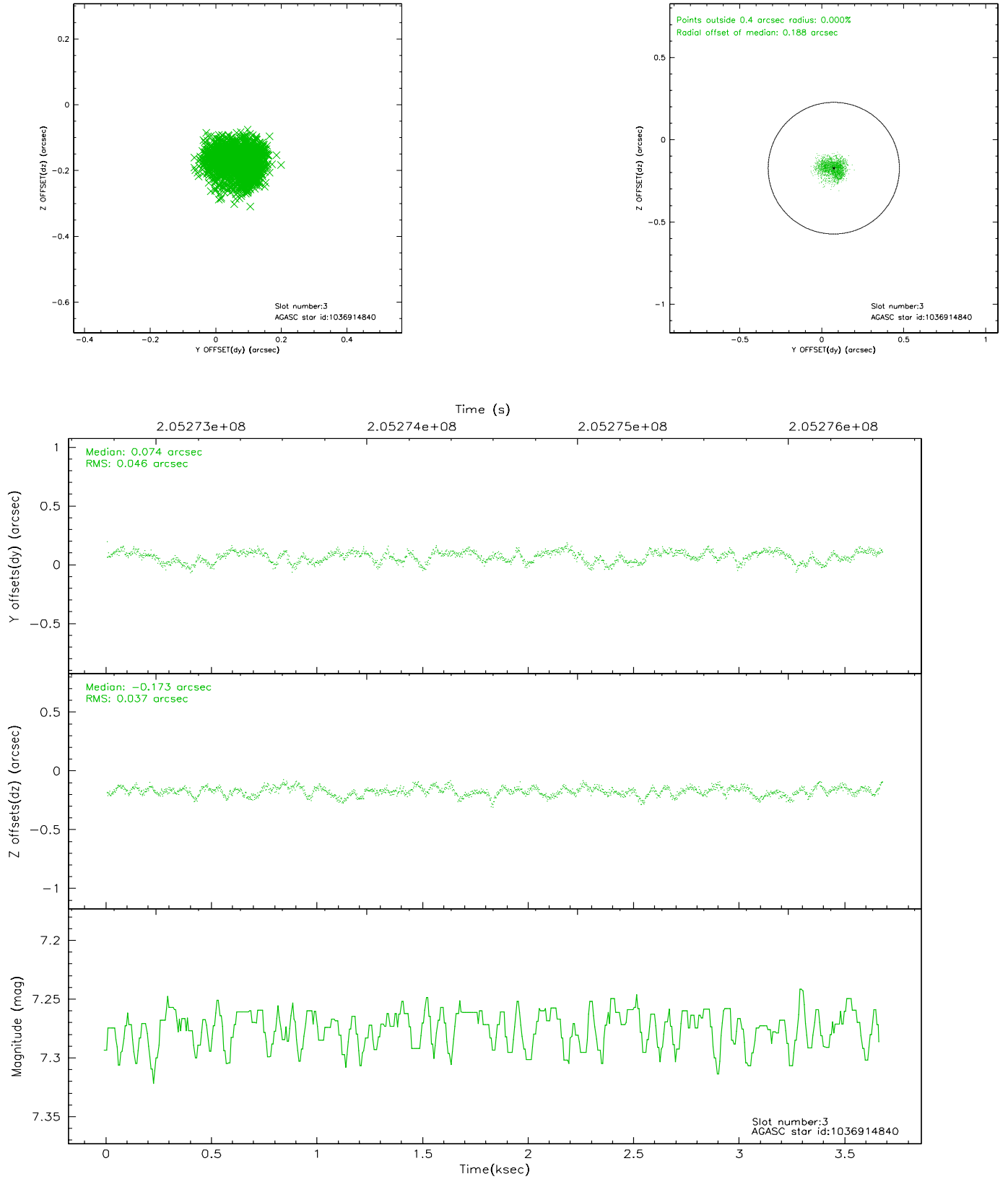
### Slot Statistics

slot	status	id	mag	n_pts	med_dy	med_dz	dr1	dr2	ra	dec	mean_y	mean_z
0	FID	ACIS-I-1	7.24	896	0.024	0.045	0.007	0.012	0.000000	0.000000	935.12	-831.60
1	FID	ACIS-I-5	7.23	897	-0.160	0.054	0.006	0.010	0.000000	0.000000	-1812.22	1065.04
2	FID	ACIS-I-6	7.25	897	0.045	-0.030	0.008	0.011	0.000000	0.000000	398.83	1711.40
3	GUIDE	1036914840	7.27	1793	0.074	-0.173	0.064	0.098	271.918096	-43.392043	497.45	421.70
4	GUIDE	1036920160	8.86	1793	0.007	-0.028	0.072	0.114	271.830191	-43.925169	1207.13	-1375.89
5	GUIDE	1036921120	8.66	1792	-0.099	0.195	0.069	0.112	271.843906	-44.157071	1635.27	-2094.48
6	GUIDE	1036945328	9.10	1793	0.008	0.038	0.084	0.139	271.207896	-43.840237	-356.44	-1881.21
7	GUIDE	1036395792	9.17	1792	0.010	-0.028	0.079	0.126	271.618591	-42.763132	-1272.74	2037.54

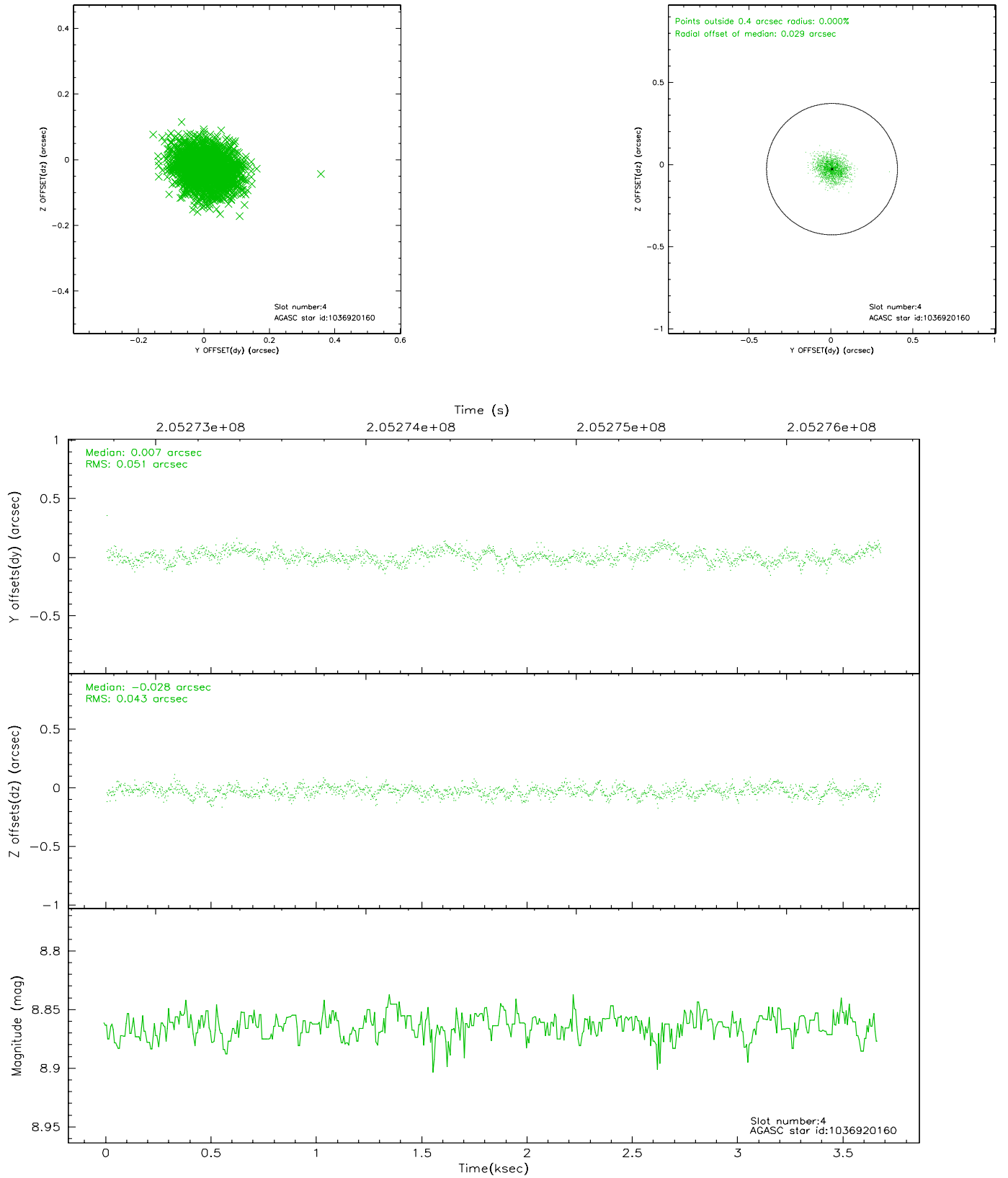


## 2.4 Star Slots

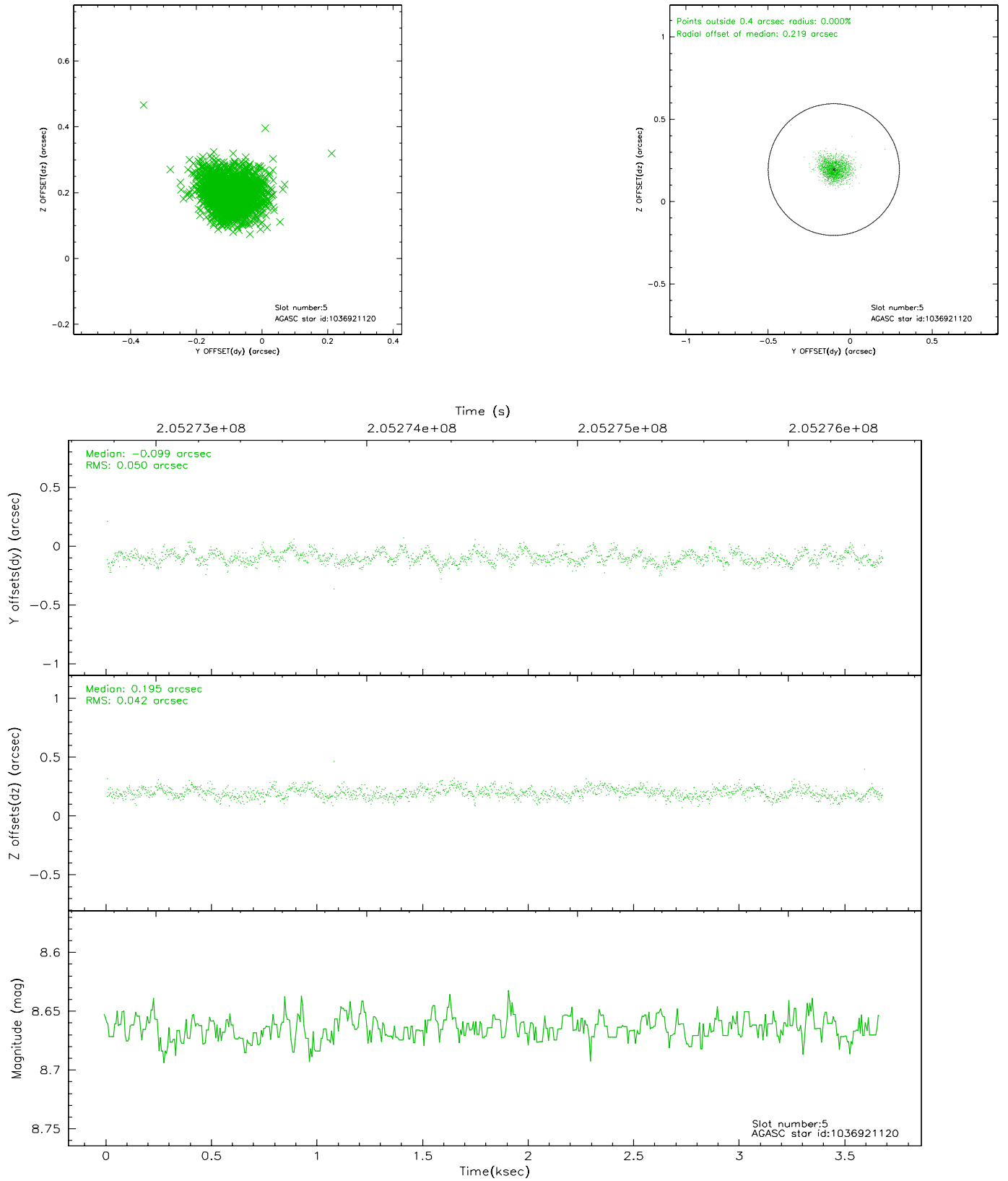
### 2.4.1 Slot 3



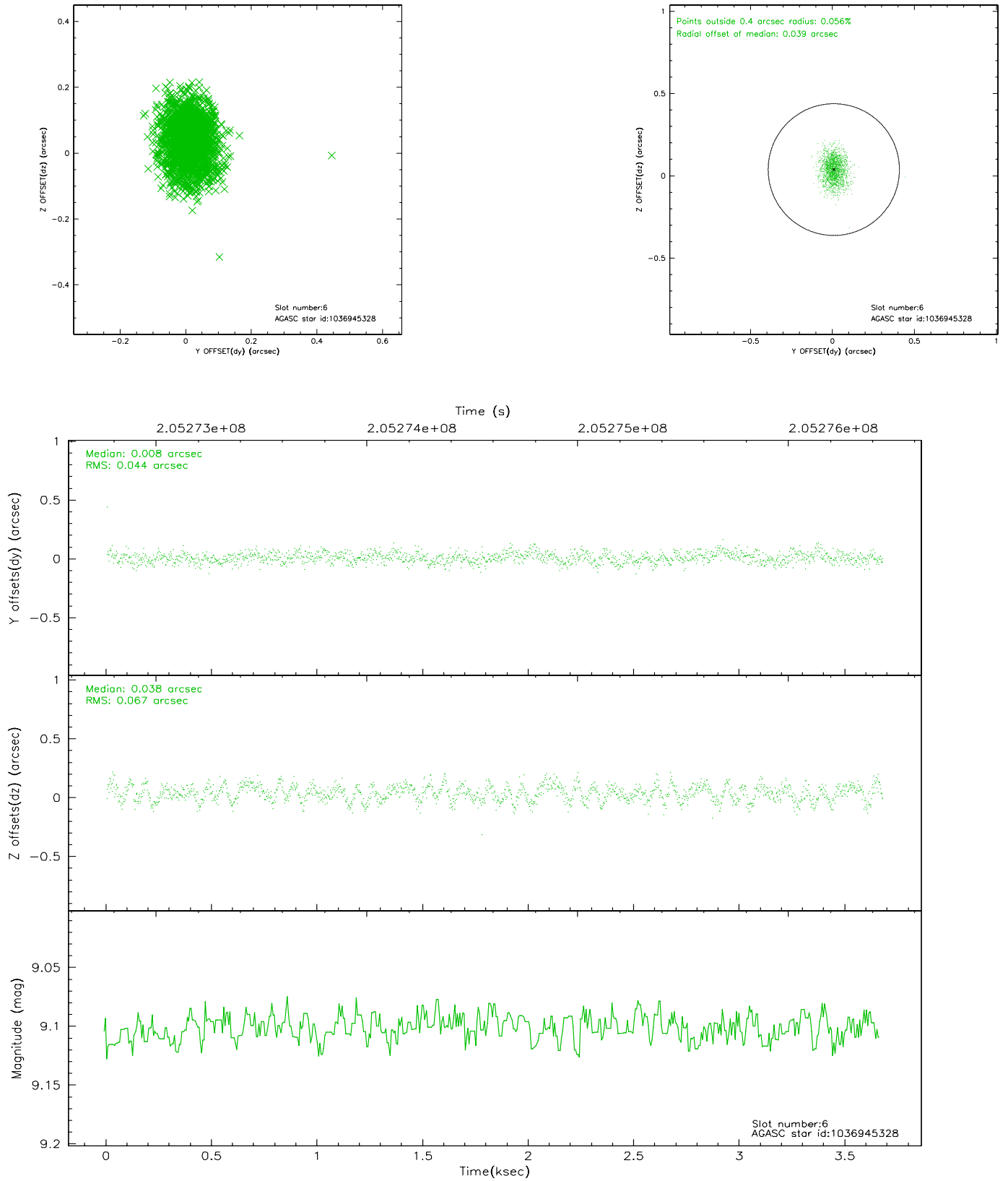
## 2.4.2 Slot 4



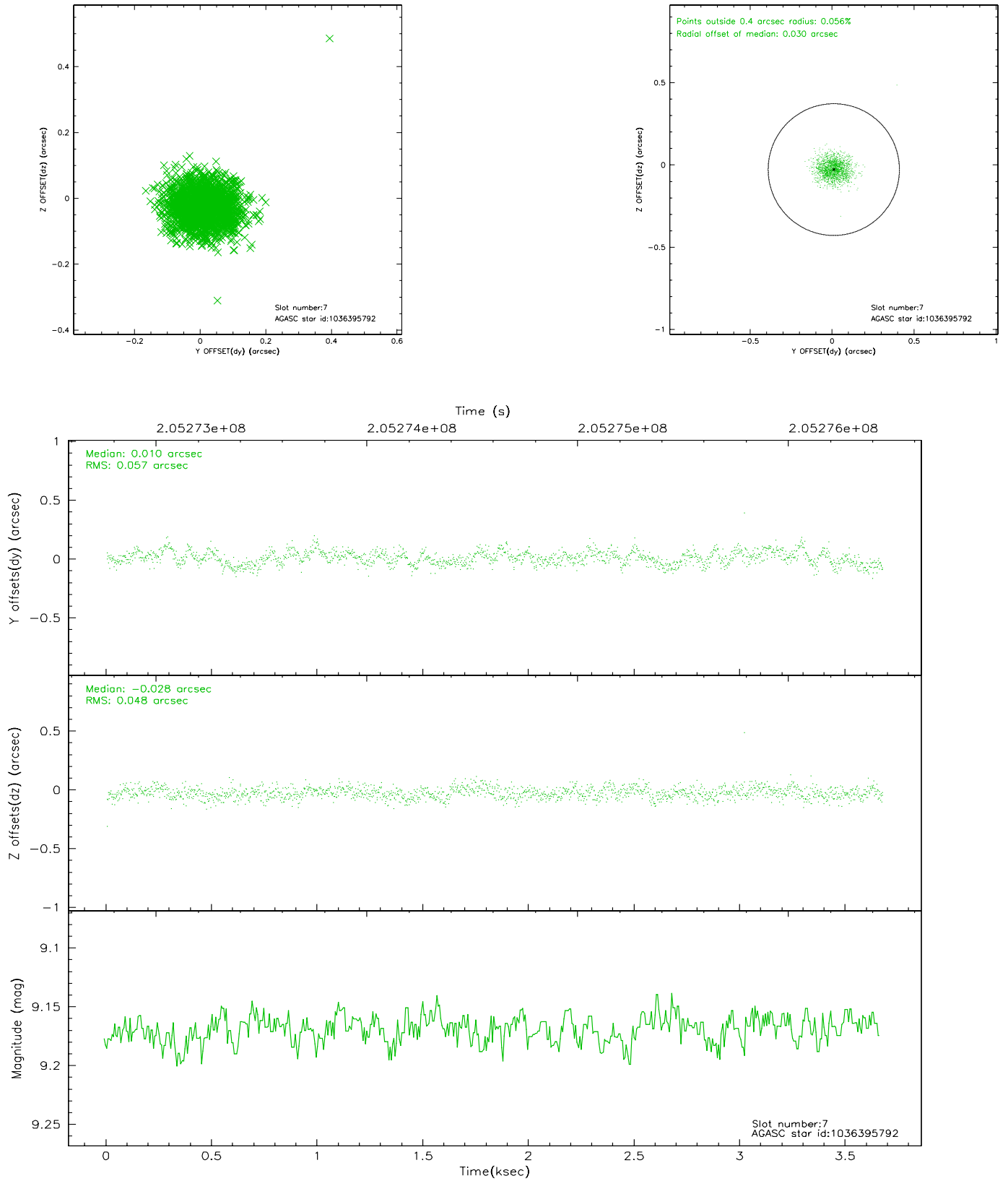
### 2.4.3 Slot 5



## 2.4.4 Slot 6

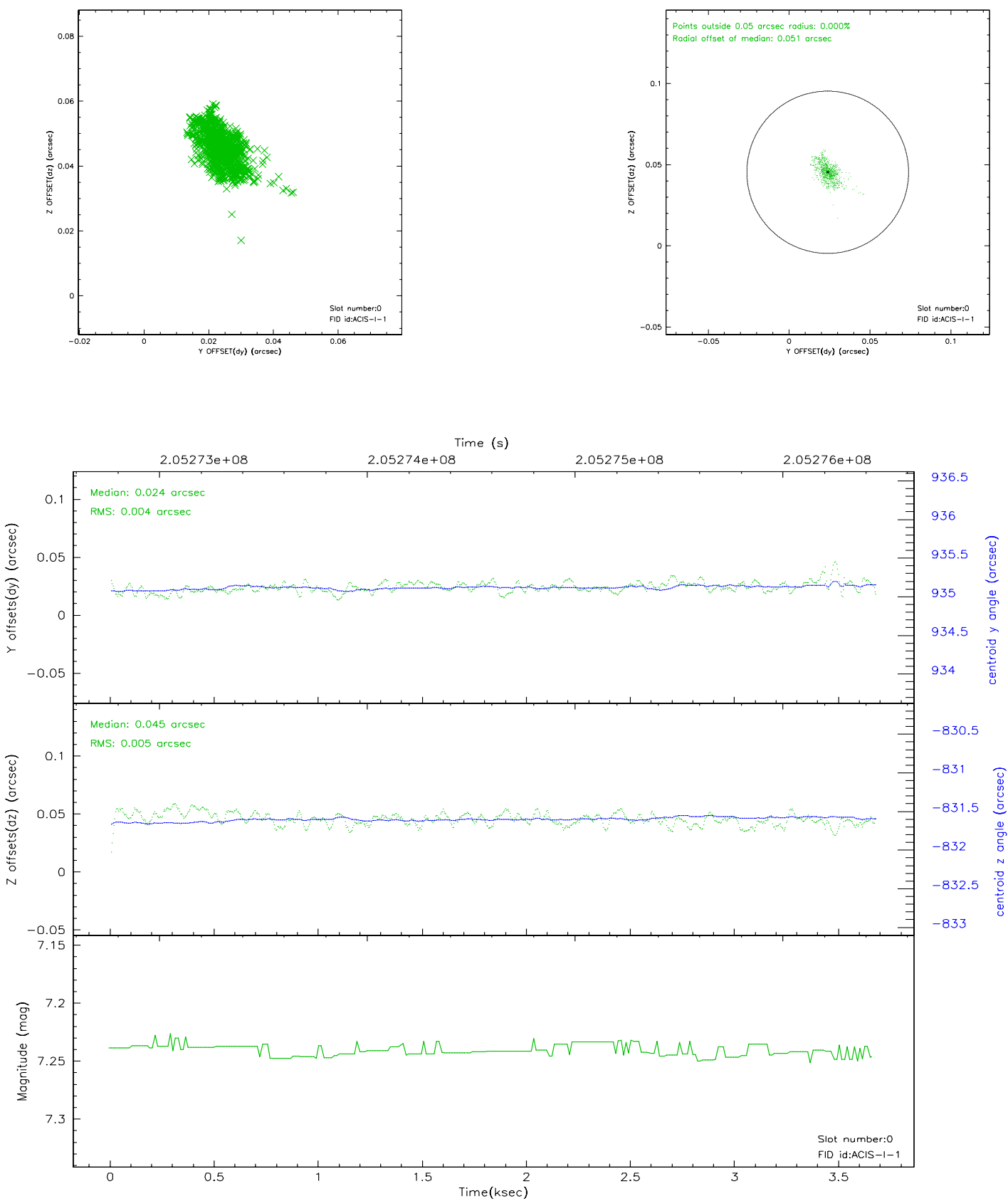


## 2.4.5 Slot 7

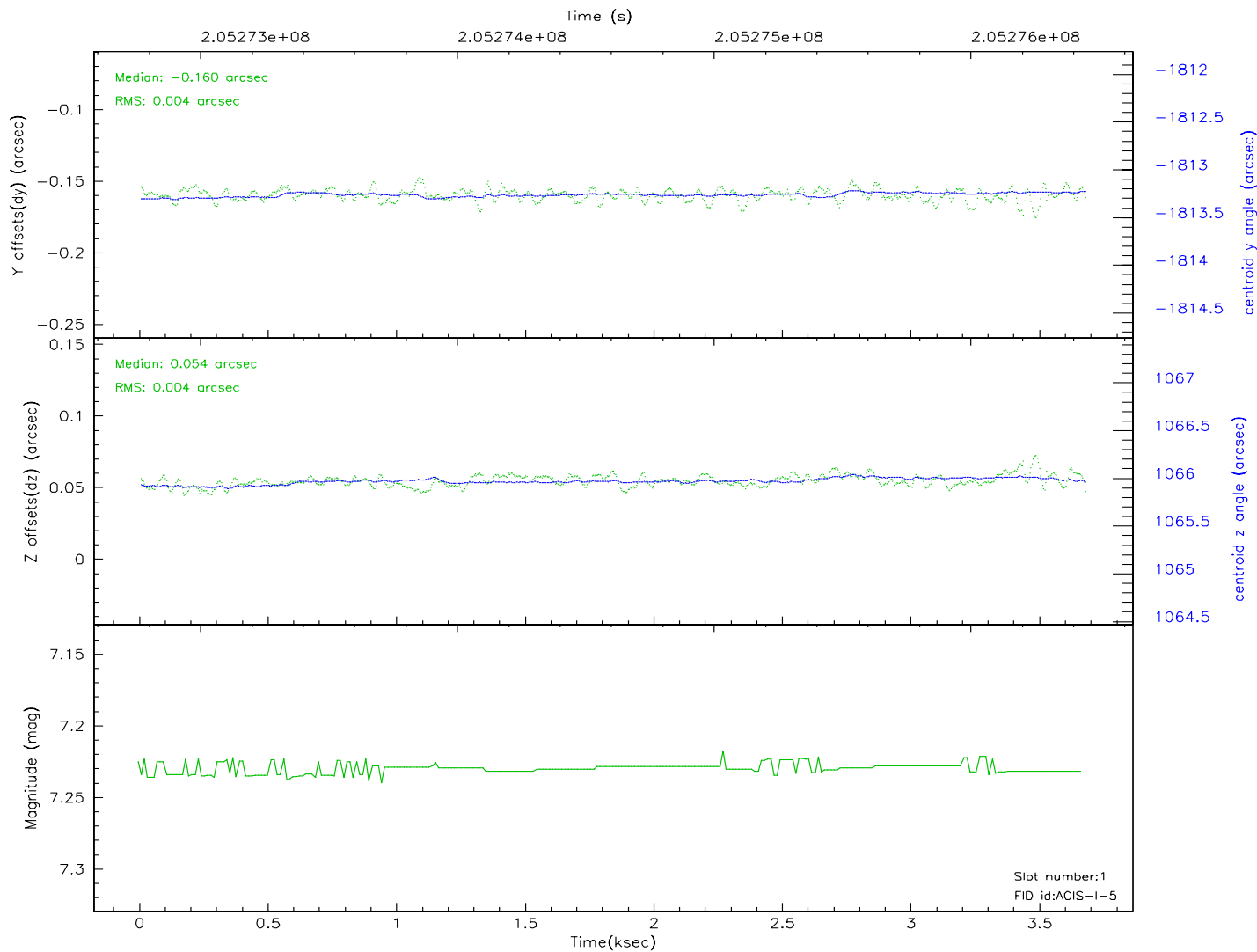
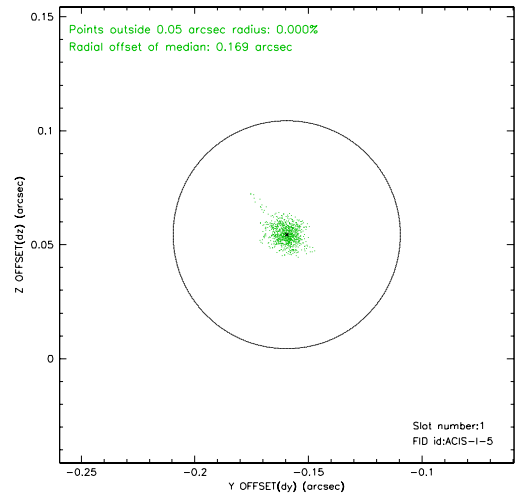
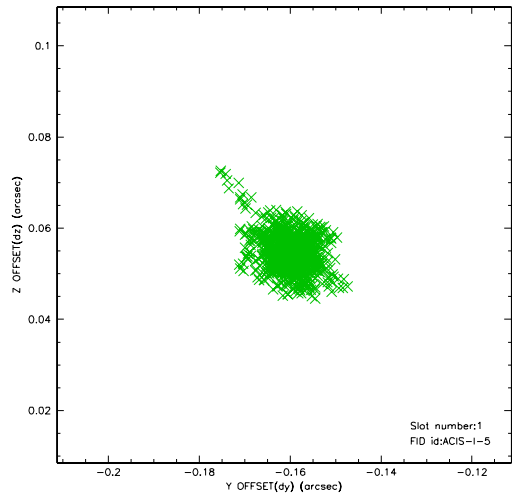


## 2.5 FID Slots

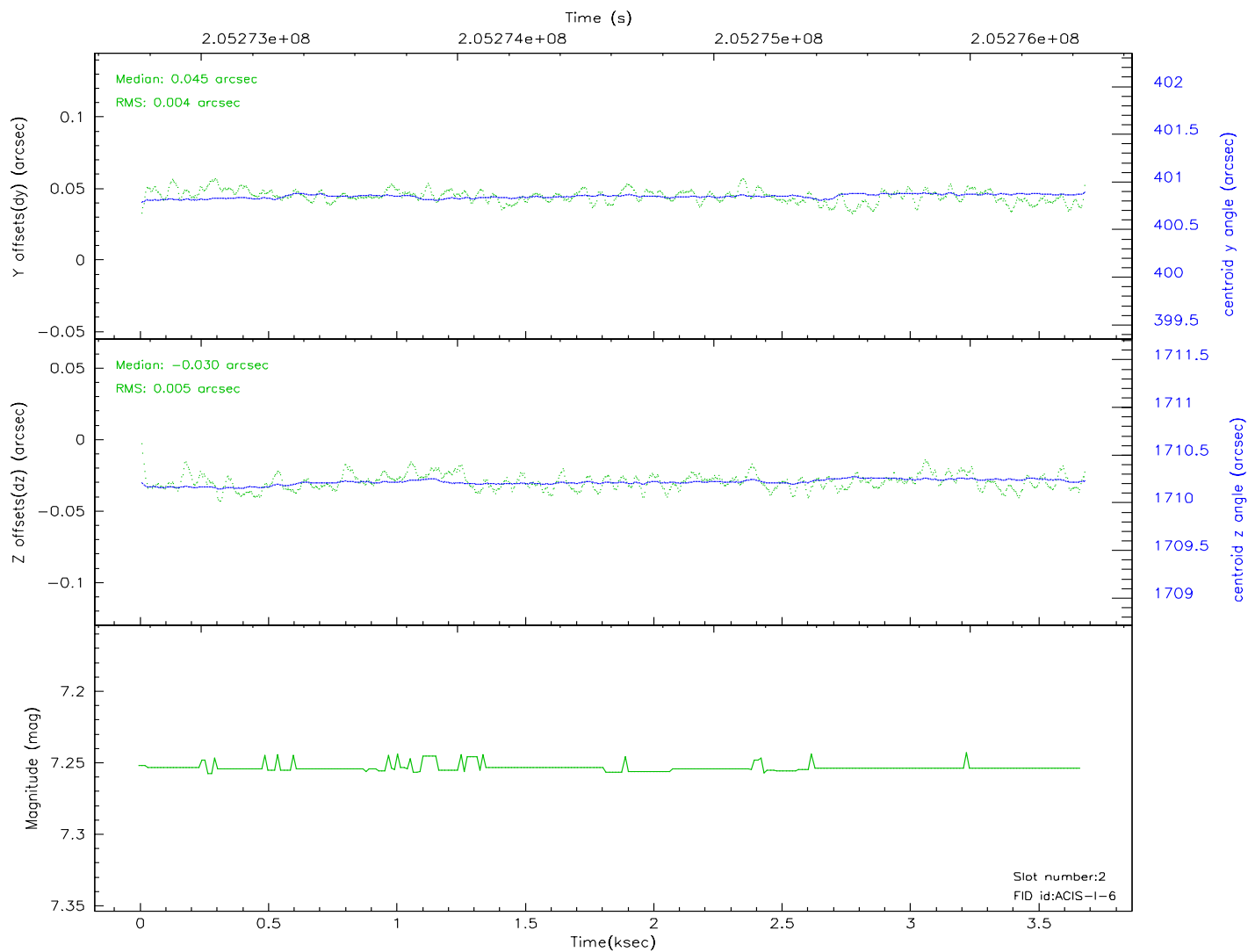
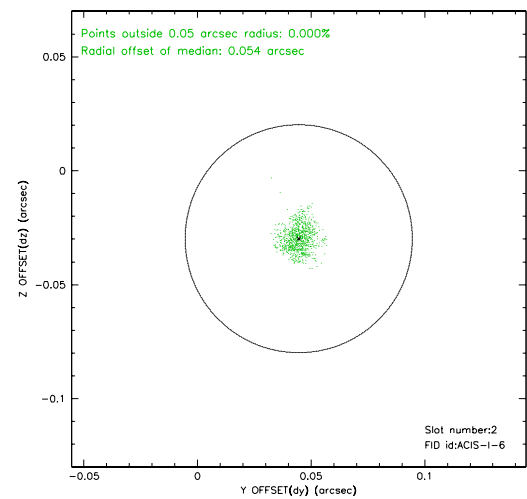
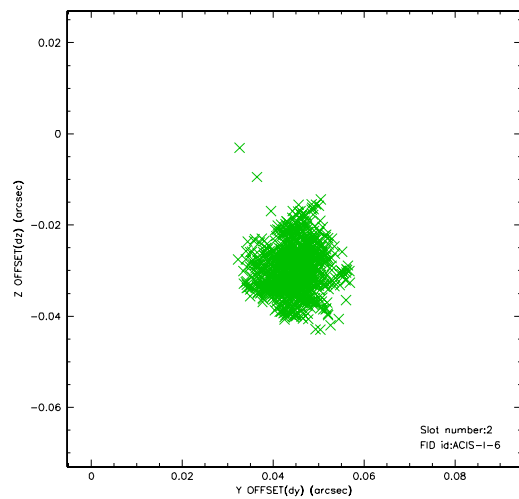
### 2.5.1 Slot 0



2.5.2 Slot 1

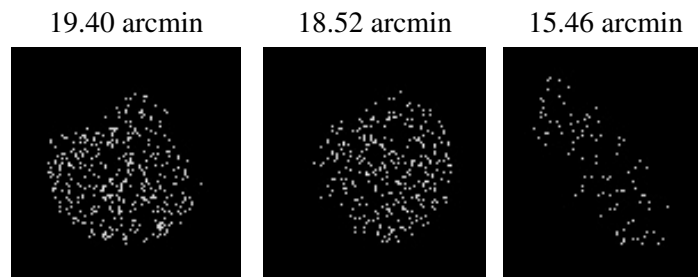


### 2.5.3 Slot 2





### 3 Point Sources



## A Summary

### A.1 Status

V&V Scientist	Jen Lauer
V&V Date (YYYY-MM-DD)	2006.04.30
V&V Edition	1
V&V Disposition and Status	OK
V&V Charge Time	2.863

### A.2 Comments