

V&V Reference Report

L2 ASCDS Version : 10.4.3

Observation 51319 - L2 Version 1
Chandra X-Ray Center

L2 Processing Date : Jan 22 2016

Contents

1	Front	2
2	OBI	3
2.1	OBI	3
2.1.1	Images	3
2.1.2	Bias	3
2.1.3	Parameters	4
2.1.4	Events	4
2.2	Compared Parameters	5
2.3	Star Slots	6
2.4	FID Slots	6
A	Summary	7
A.1	Status	7
A.2	Comments	7

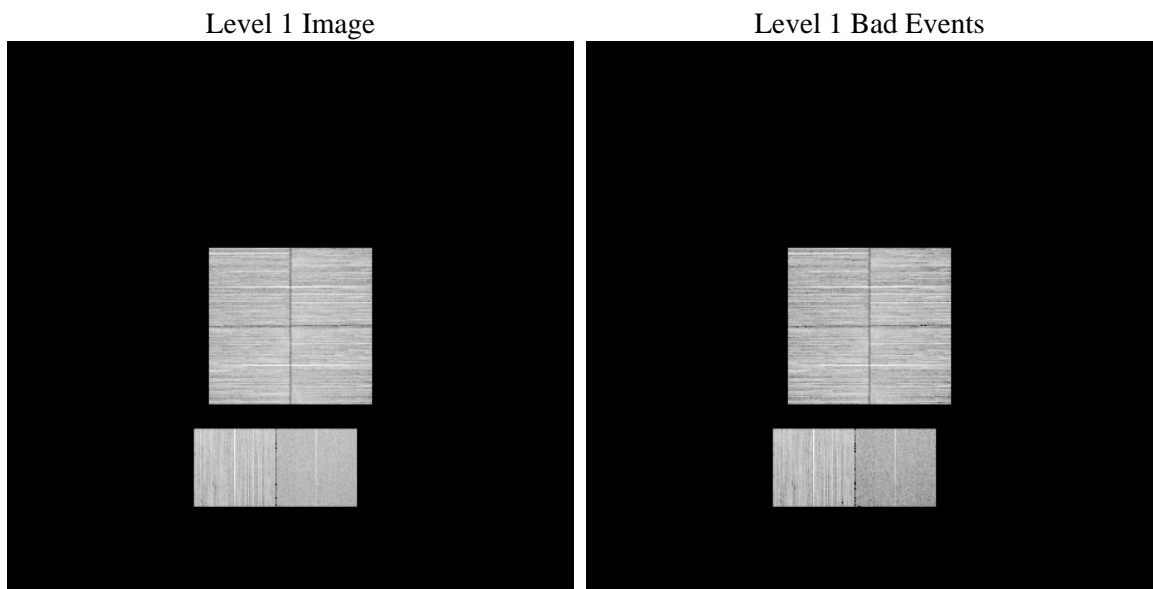
1 Front

seq_num	 	Sequence number
obs_id	51319	Observation id
title	ACIS-012367 diagnostics	Proposal title
observer	CHANDRA engineering request/realtime commanding	Principal investig
object	 	Source name
dtcycle	0	
cycle	P	events from which exps? Prim/Second/Both
ra_targ	0.0	Observer's specified target RA [deg]
dec_targ	0.0	Observer's specified target Dec [deg]
ra_nom	85.335152543559	Nominal RA [deg]
dec_nom	6.5317237147555	Nominal Dec [deg]
roll_nom	291.05165787331	Nominal Roll [deg]
revision	1	Processing version of data
ontime	8230.4001226425	Sum of GTIs [s]
livetime	8126.1818405376	Livetime [s]
ontime0	8230.4001226425	Sum of GTIs [s]
ontime1	8230.4001226425	Sum of GTIs [s]
ontime2	8230.4001226425	Sum of GTIs [s]
ontime3	8230.4001226425	Sum of GTIs [s]
ontime6	8230.4001226425	Sum of GTIs [s]
ontime7	8230.4001226425	Sum of GTIs [s]
l2events	145416	Number of level 2 events

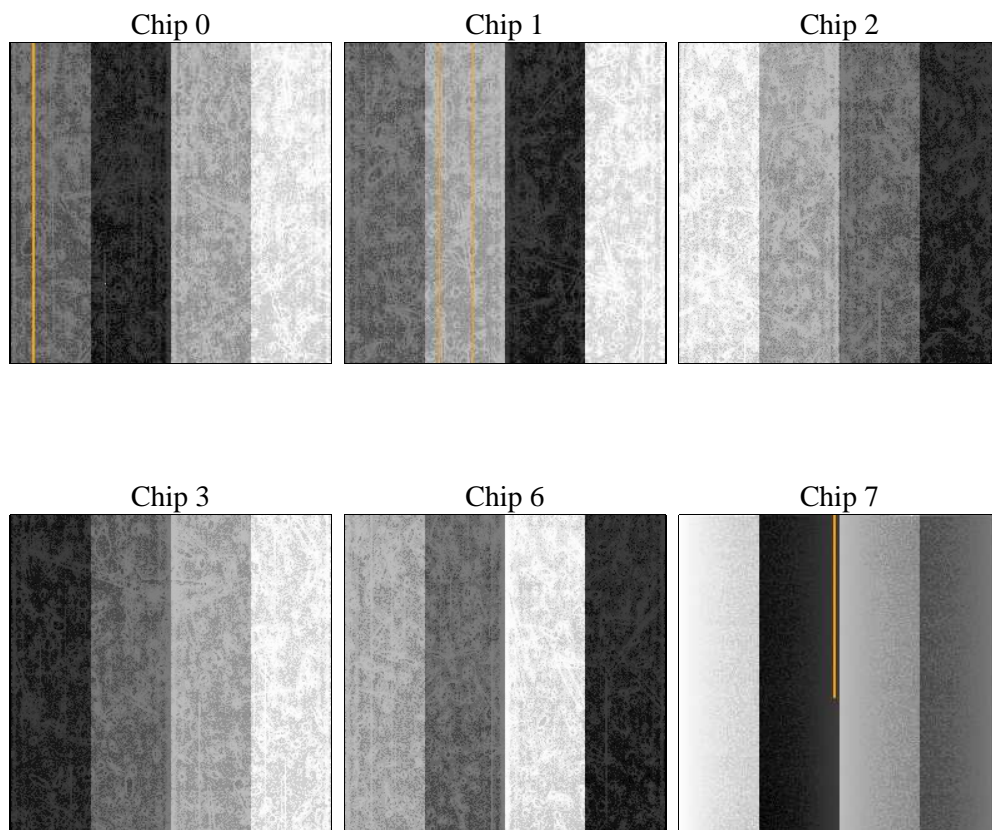
2 OBI

2.1 OBI

2.1.1 Images



2.1.2 Bias



2.1.3 Parameters

obi_num	0	Obi number	sched_exp_time	0.0	[s] Scheduled observation exposure time
ascdsver	10.4.3	Processing system revision	ontime	8230.4001226425	Sum of GTIs [s]
caldbver	4.7.0	 	ontime0	8230.4001226425	Sum of GTIs [s]
date	2016-01-22T21:52:49	Date and time of file creation	ontime1	8230.4001226425	Sum of GTIs [s]
revision	1	Processing version of data	ontime2	8230.4001226425	Sum of GTIs [s]
			ontime3	8230.4001226425	Sum of GTIs [s]
			ontime6	8230.4001226425	Sum of GTIs [s]
			ontime7	8230.4001226425	Sum of GTIs [s]
			l1events	951366	Number of level 1 events

2.1.4 Events

	ccd 0	ccd 1	ccd 2	ccd 3	ccd 6	ccd 7		ccd 0	ccd 1	ccd 2	ccd 3	ccd 6	ccd 7
level 1 events	147492	165149	170157	168972	173159	126437	grade 0 events	9944	9475	10035	10132	10033	5945
rejected events	126702	144446	149723	148485	151735	75228		6%	5%	5%	5%	5%	4%
rejected %	85%	87%	87%	87%	87%	59%	grade 1 events	72	41	72	72	57	99
								0%	0%	0%	0%	0%	0%
							grade 2 events	4569	4822	4261	4082	4750	12622
								3%	2%	2%	2%	2%	9%
							grade 3 events	1482	1459	1473	1505	1451	4045
								1%	0%	0%	0%	0%	3%
							grade 4 events	1455	1456	1486	1560	1457	3993
								0%	0%	0%	0%	0%	3%
							grade 5 events	3236	3189	2928	3461	3459	8477
								2%	1%	1%	2%	1%	6%
							grade 6 events	3457	3607	3287	3337	3888	24920
								2%	2%	1%	1%	2%	19%
							grade 7 events	123277	141100	146615	144823	148064	66336
								83%	85%	86%	85%	85%	52%

2.2 Compared Parameters

Parameter	Planned	Actual
Instrument	ACIS	ACIS
Detector	ACIS-012367	ACIS-012367
Grating	NONE	NONE
Data mode	FAINT	FAINT
Observation mode	SECONDARY	SECONDARY
[deg] Pointing RA	0	85.33515254355859
[deg] Pointing Dec	0	6.53172371475546
[deg] Pointing Roll	0.0	291.0516578733088
SIM focus pos (mm)	-1.4281808131	-1.4281808131
[mm] SIM defocus	0.1051557500557434	0.1051557500557434
SIM translation stage pos (mm)	250.4660330802	250.4660330802
[mm] SIM translation stage offset	-0.01005726120527584	-0.01005726120527584
[s] Observation start time (MET)	569813830.0057	569813830.0057
Observation start date	2016-01-22T01:37:10	2016-01-22T01:37:10
[s] Observation end time (MET)	569823326.892939	569823326.892939
Observation end date	2016-01-22T04:15:27	2016-01-22T04:15:26
Read mode	TIMED	TIMED

Parameter	Planned	Actual
Obspar format version number	7	7
Obspar file type	PREDICTED	ACTUAL
Obspar update status	OVERRIDE	OVERRIDE
Number of optional ACIS chips dropped	0	0
On-chip summing requested	N	N
Subarray requested	NONE	NONE
Alternating exposures requested	N	N
[s] Primary exposure time	3.2	3.2

2.3 Star Slots

2.4 FID Slots

A Summary

A.1 Status

V&V Scientist	Beth Sundheim
V&V Date (YYYY-MM-DD)	2016.01.22
V&V Edition	1
V&V Disposition and Status	OK
V&V Charge Time	8.2304001226425

A.2 Comments