

V&V Reference Report

L2 ASCDS Version : 7.6.7.2

Observation 4839 - L2 Version 001
Chandra X-Ray Center

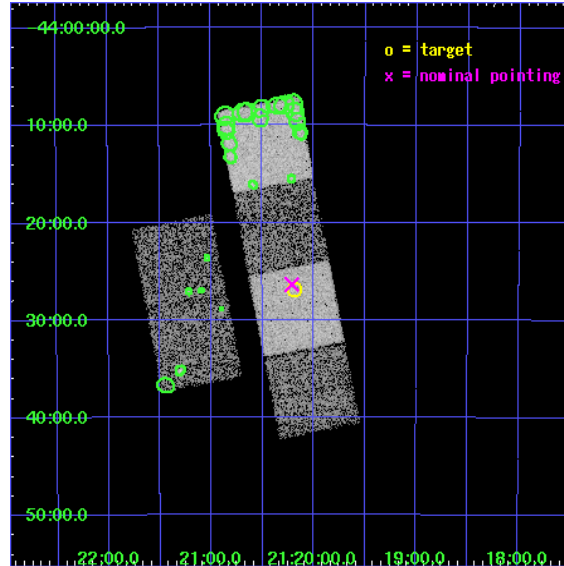
L2 Processing Date : May 23 2006

Contents

1	Front	2
2	OBI	3
2.1	OBI	3
2.1.1	Images	3
2.1.2	Bias	3
2.1.3	Parameters	4
2.1.4	Events	4
2.2	Compared Parameters	5
2.3	Aspect	6
2.4	Star Slots	9
2.4.1	Slot 3	9
2.4.2	Slot 4	10
2.4.3	Slot 5	11
2.4.4	Slot 6	12
2.4.5	Slot 7	13
2.5	FID Slots	14
2.5.1	Slot 0	14
2.5.2	Slot 1	15
2.5.3	Slot 2	16
3	Point Sources	17
A	Summary	18
A.1	Status	18
A.2	Comments	18

1 Front

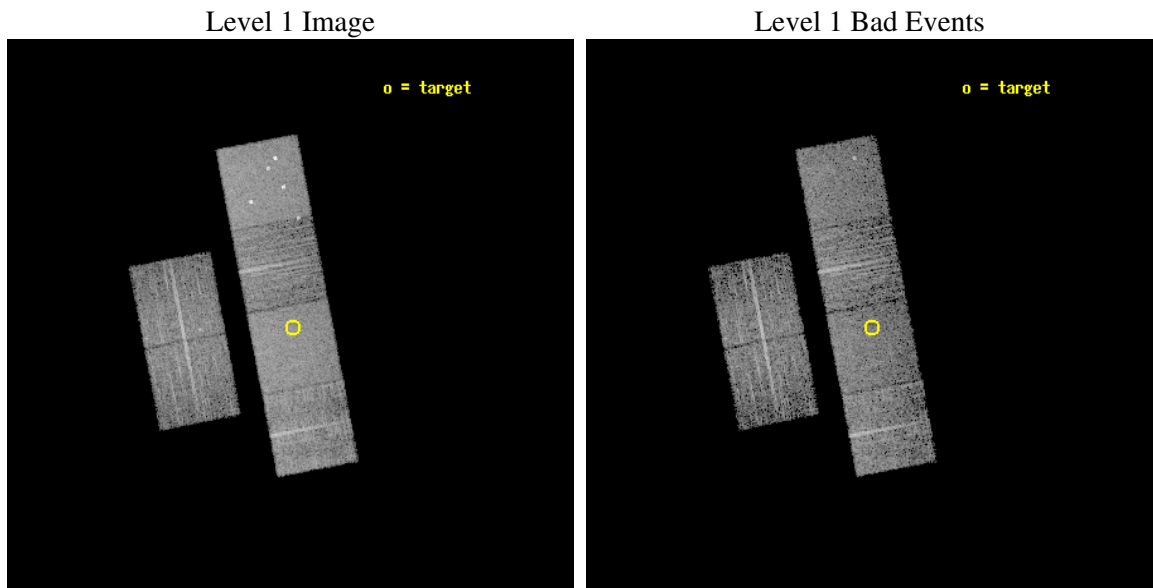
seq_num	700921
obs_id	4839
title	Constraining the Hard-X-ray Through Submm SEDs of a Complete Sample of Broad Absorption Line Quasars
observer	Dr. Sarah Gallagher
object	LBQS 2116-4439
dtcycle	0
cycle	P
ra_targ	320.048333
dec_targ	-44.448333
ra_nom	320.05317416999
dec_nom	-44.439241488166
roll_nom	79.144222891243
revision	2
ontime	5724.7999786735
livetime	5652.3091142828
ontime2	5724.7999786735
ontime3	5724.7999786735
ontime5	5724.7999786735
ontime6	5724.7999786735
ontime7	5724.7999786735
ontime8	5724.7999786735
l2events	67881



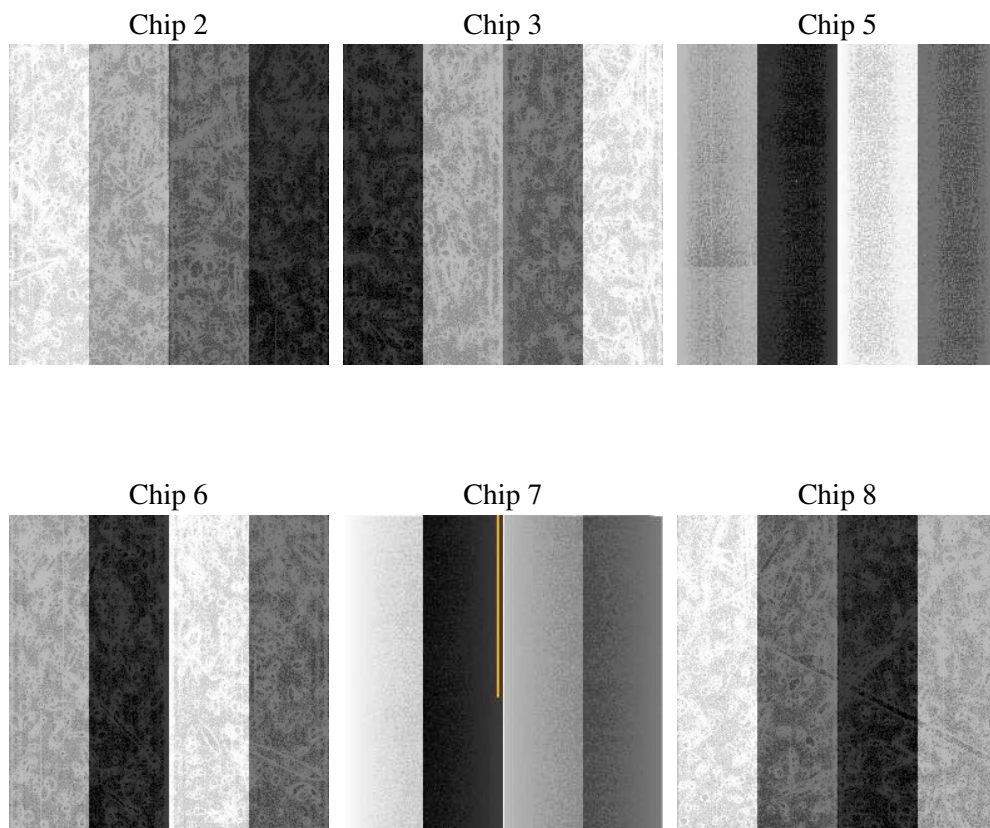
2 OBI

2.1 OBI

2.1.1 Images



2.1.2 Bias



2.1.3 Parameters

obi_num	0
ascdsver	7.6.7.2
caldbver	3.2.2
date	2006-05-23T15:26:14
revision	2

sched_exp_time	5767.128000
ontime	5730.0965839624
ontime2	5730.0965839624
ontime3	5730.0965839624
ontime5	5730.0965839624
ontime6	5730.0965839624
ontime7	5730.0965839624
ontime8	5730.0965839624
l1events	303447

2.1.4 Events

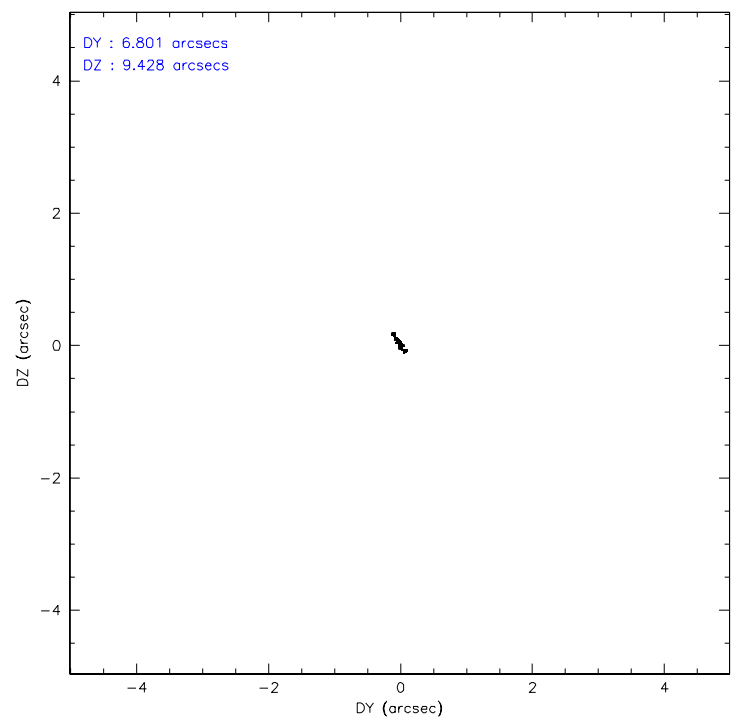
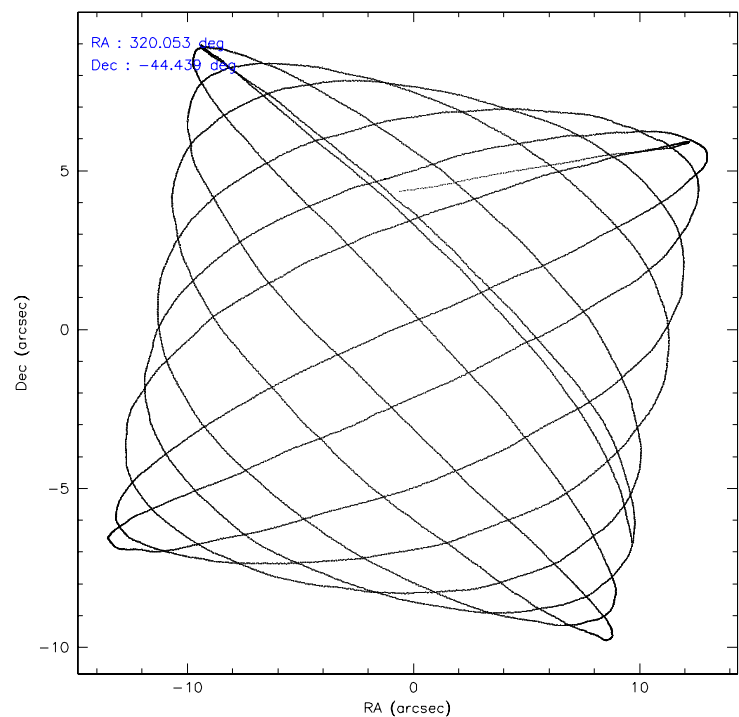
	ccd 2	ccd 3	ccd 5	ccd 6	ccd 7	ccd 8
level 1 events	42483	41022	64832	43372	58186	53552
rejected events	37069	35524	34974	37909	35515	41363
rejected %	87%	86%	53%	87%	61%	77%

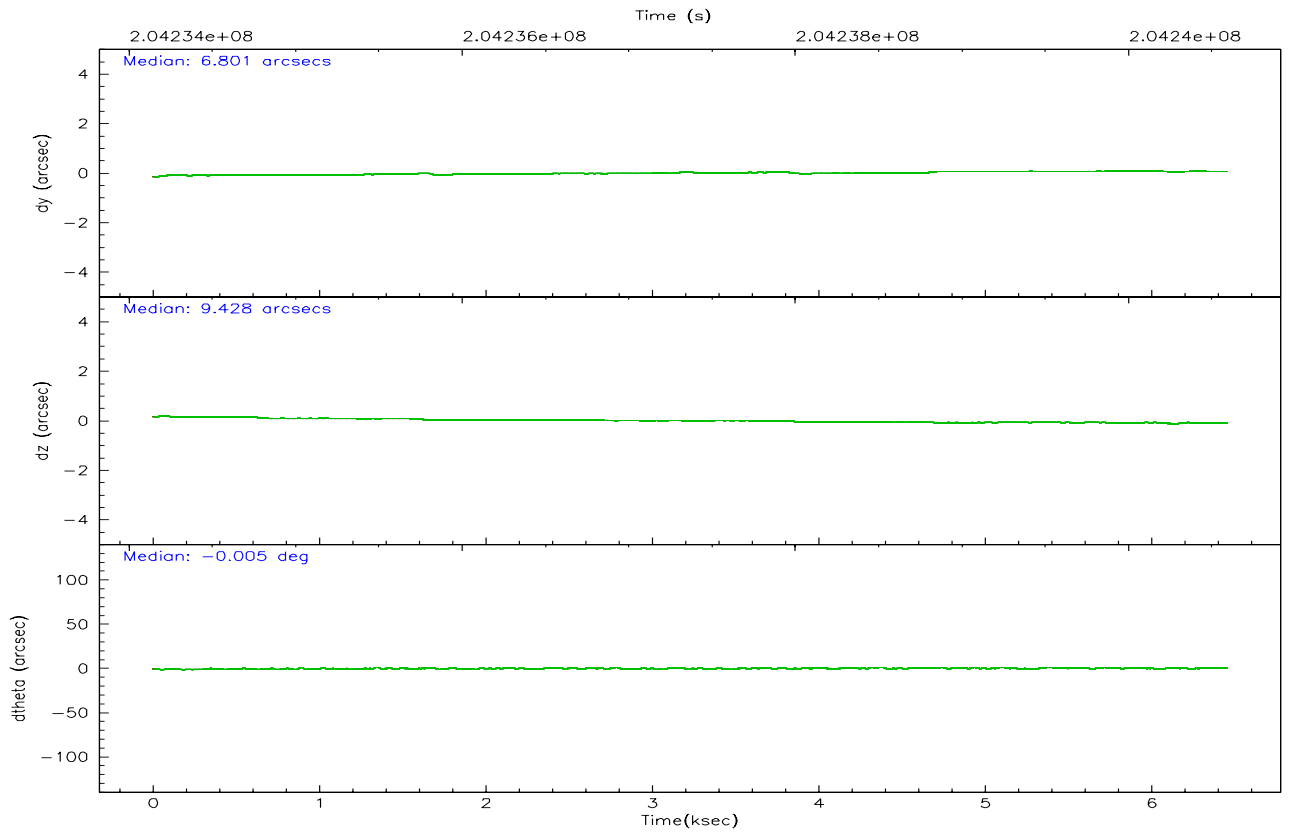
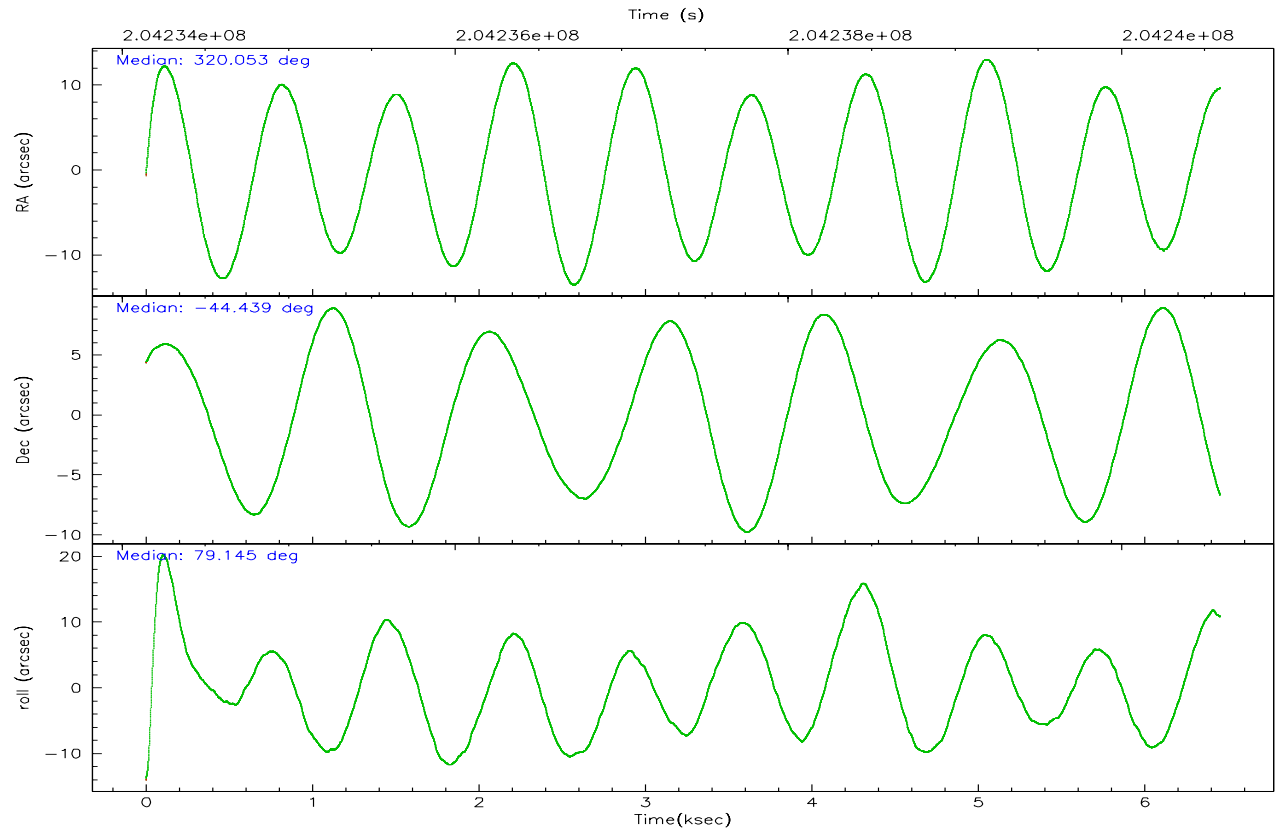
	ccd 2	ccd 3	ccd 5	ccd 6	ccd 7	ccd 8
grade 0 events	2726	2648	3887	2410	1386	4093
	6%	6%	5%	5%	2%	7%
grade 1 events	34	30	53	19	31	42
	0%	0%	0%	0%	0%	0%
grade 2 events	976	988	9014	1070	5530	2580
	2%	2%	13%	2%	9%	4%
grade 3 events	472	459	639	498	1221	1268
	1%	1%	0%	1%	2%	2%
grade 4 events	465	491	571	470	1189	1270
	1%	1%	0%	1%	2%	2%
grade 5 events	1707	1810	2988	1853	3862	2489
	4%	4%	4%	4%	6%	4%
grade 6 events	781	915	15763	1020	13359	2984
	1%	2%	24%	2%	22%	5%
grade 7 events	35322	33681	31917	36032	31608	38826
	83%	82%	49%	83%	54%	72%

2.2 Compared Parameters

Parameter	Planned	Actual	Parameter	Planned	Actual
Instrument	ACIS	ACIS	Obspar format version number	6	6
Detector	ACIS-235678	ACIS-235678	Obspar file type	PREDICTED	ACTUAL
Grating	NONE	NONE	Obspar update status	NONE	UPDATED
Data mode	FAINT	FAINT	On-chip summing requested	N	N
Observation mode	POINTING	POINTING	Subarray requested	NONE	NONE
Pointing RA	320.066175	320.0531741699901	Alternating exposures requested	N	N
Pointing Dec	-44.464906	-44.43924148816647	Primary exposure time	0.000000	3.2
Pointing Roll	78.996758	79.14422289124252			
SIM focus pos (mm)	-0.684267	-0.6828225247311905			
SIM defocus (mm)	0	0.001444936568705701			
SIM translation stage pos (mm)	-190.132523	-190.1400660498719			
SIM translation stage offset (mm)	0	0.00754346686406393			
Observation start time	204234829.184000	204233618.89129			
Observation start date	2004-06-21T19:52:45	2004-06-21T19:33:38			
Observation end time	204240596.184000	204240813.87911			
Observation end date	2004-06-21T21:28:52	2004-06-21T21:33:33			
Read mode	TIMED	TIMED			

2.3 Aspect



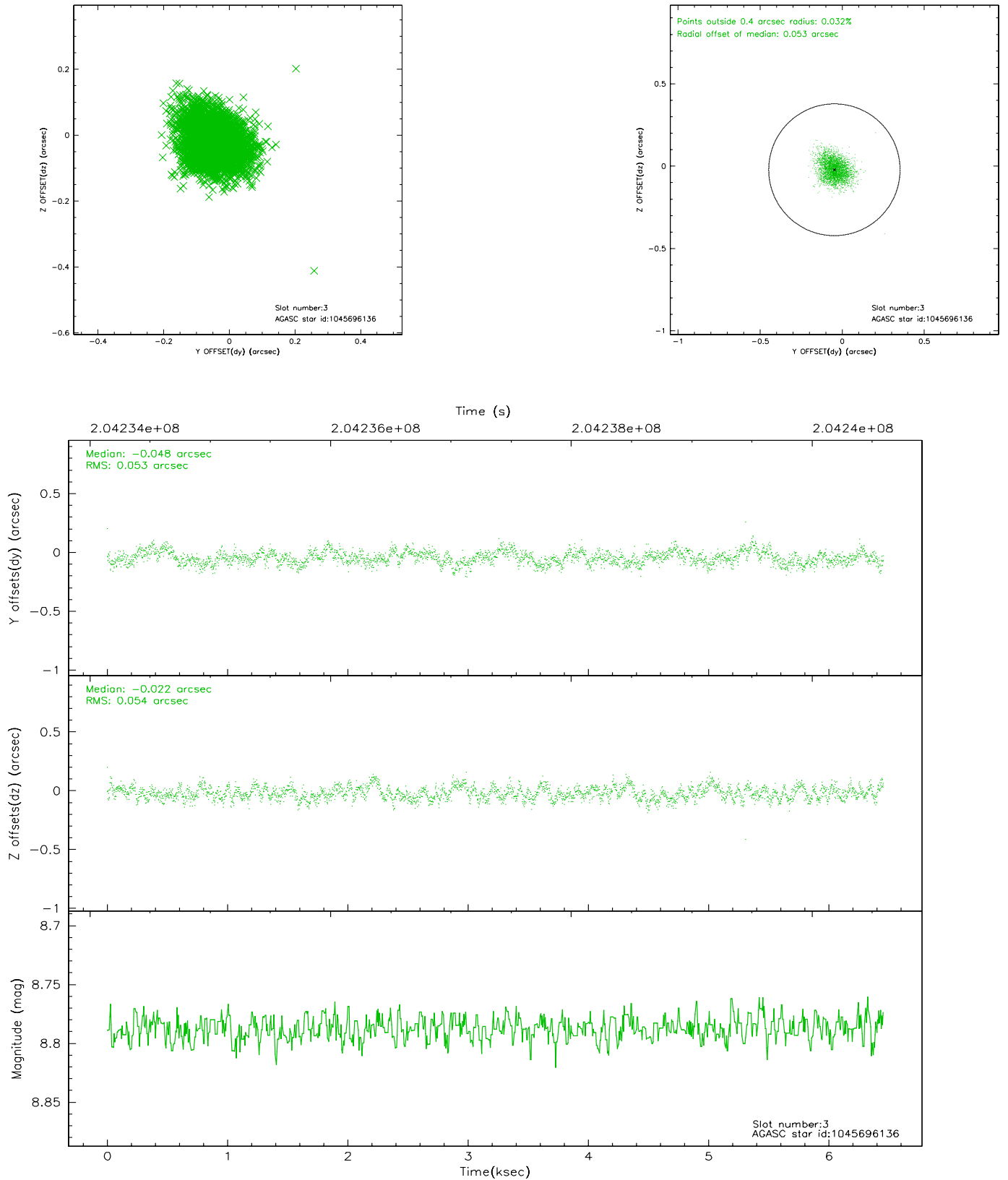


Slot Statistics

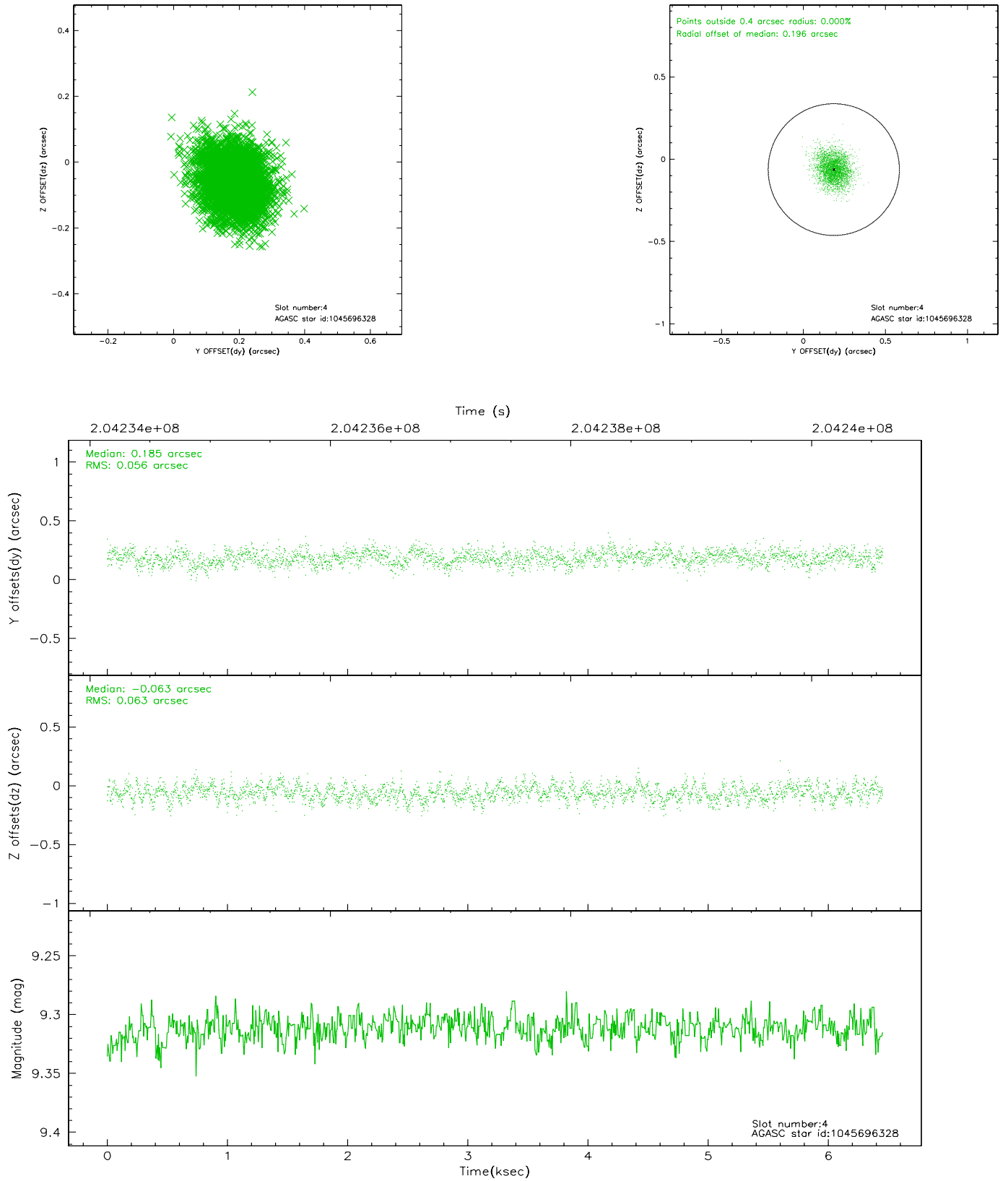
slot	status	id	mag	n_pts	med_dy	med_dz	dr1	dr2	ra	dec	mean_y	mean_z
0	FID	ACIS-S-2	7.10	1575	-0.030	-0.003	0.008	0.016	0.000000	0.000000	-759.56	-1730.68
1	FID	ACIS-S-4	7.20	1575	0.023	0.015	0.006	0.028	0.000000	0.000000	2153.34	176.92
2	FID	ACIS-S-5	7.23	1575	-0.025	-0.004	0.008	0.016	0.000000	0.000000	-1811.25	171.56
3	GUIDE	1045696136	8.79	3149	-0.048	-0.022	0.080	0.130	319.762481	-44.279801	502.88	895.39
4	GUIDE	1045696328	9.31	3150	0.185	-0.063	0.090	0.146	319.356854	-44.995999	-2228.84	1406.62
5	GUIDE	1047396392	9.79	3149	0.013	-0.213	0.140	0.220	320.008382	-44.246607	742.24	296.69
6	GUIDE	1047400272	9.87	3144	-0.027	0.172	0.129	0.228	320.338940	-44.055003	1582.27	-410.95
7	GUIDE	1047401552	9.10	3147	-0.125	0.121	0.082	0.130	320.556709	-44.260143	961.64	-1101.34

2.4 Star Slots

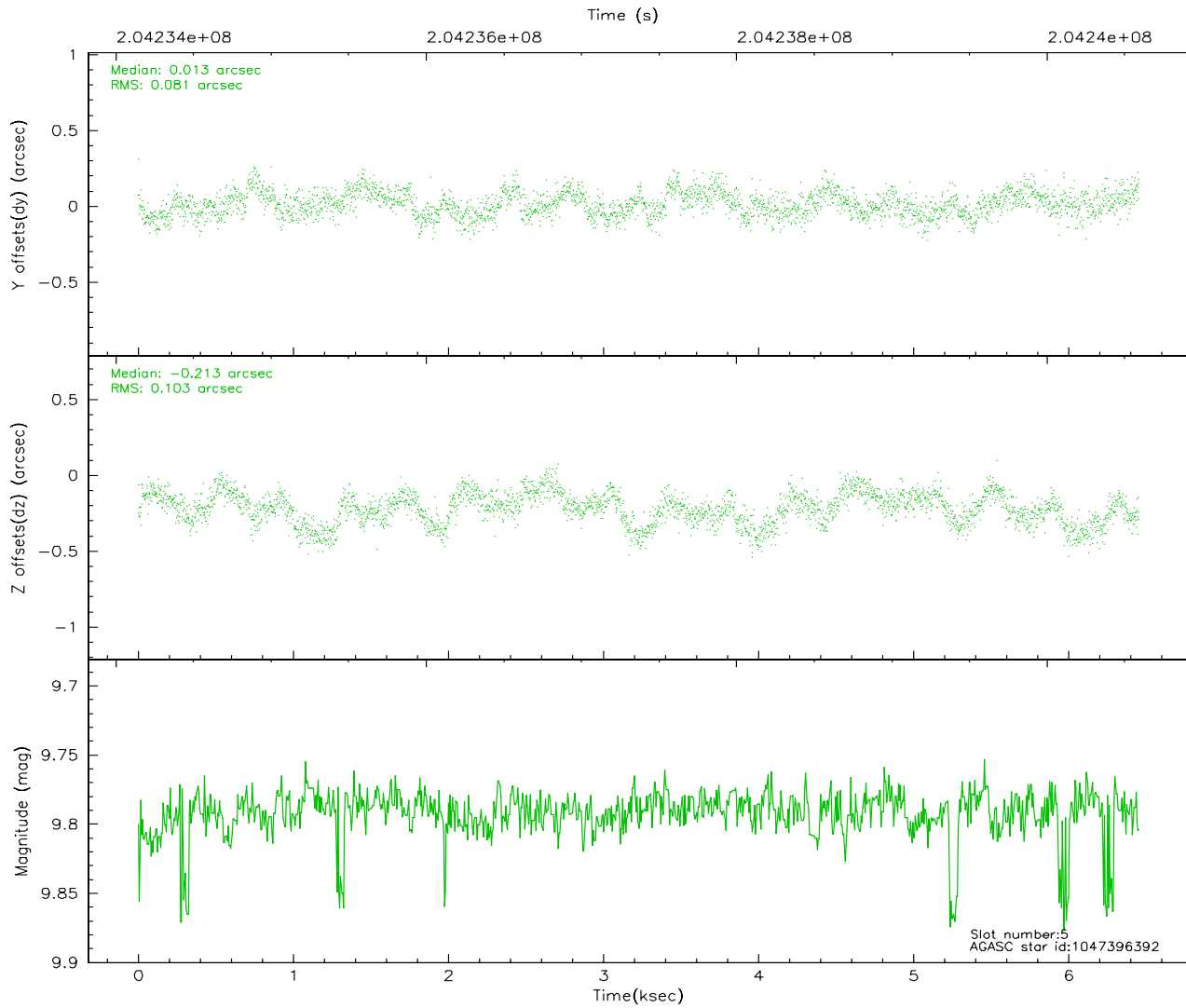
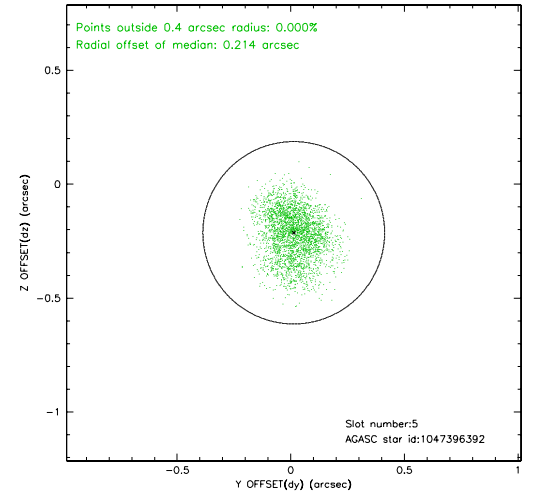
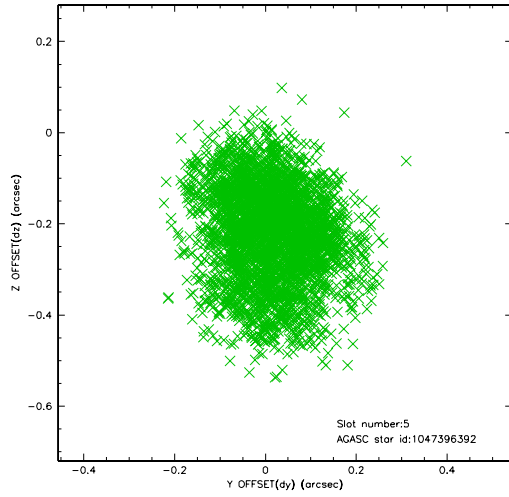
2.4.1 Slot 3



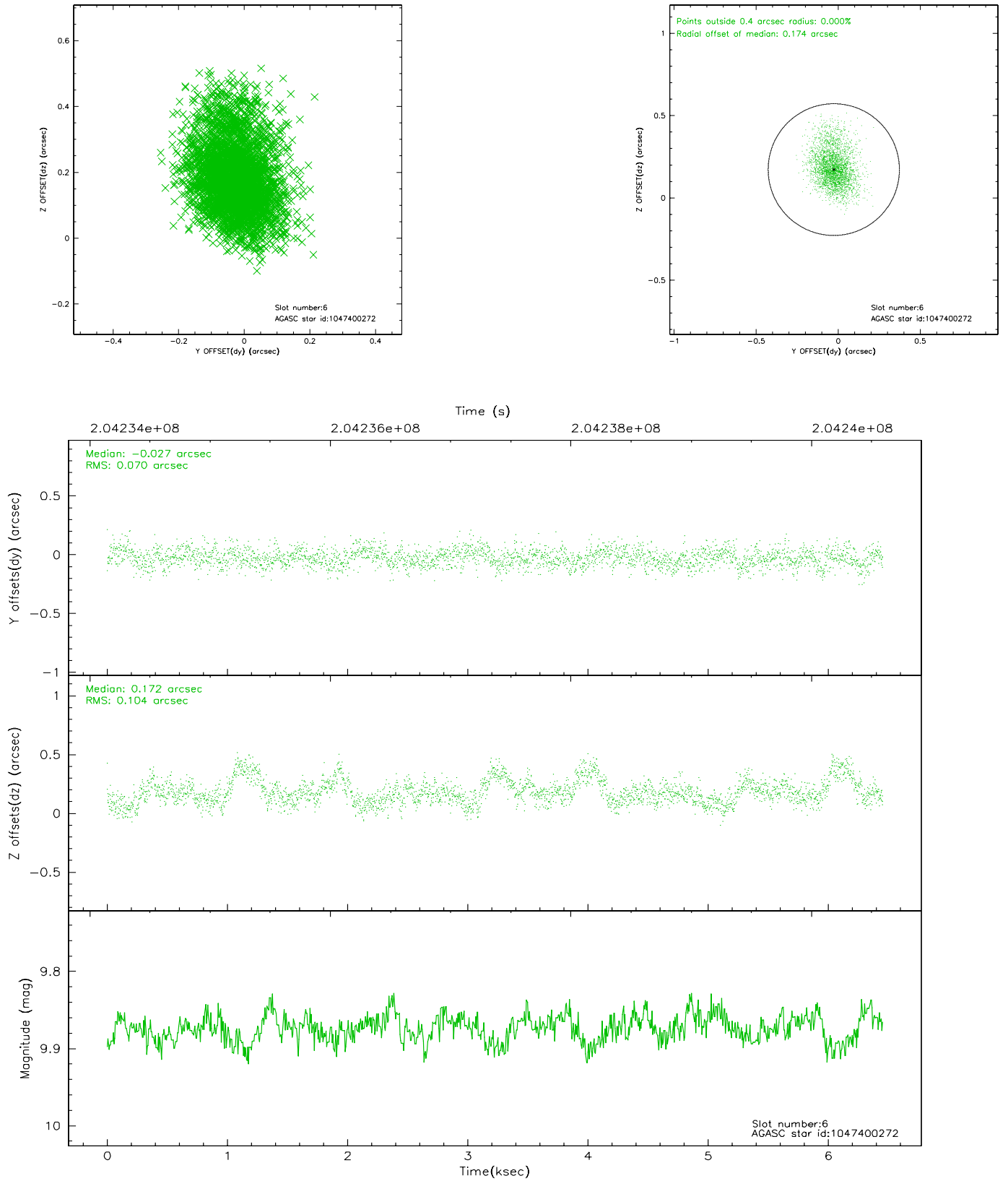
2.4.2 Slot 4



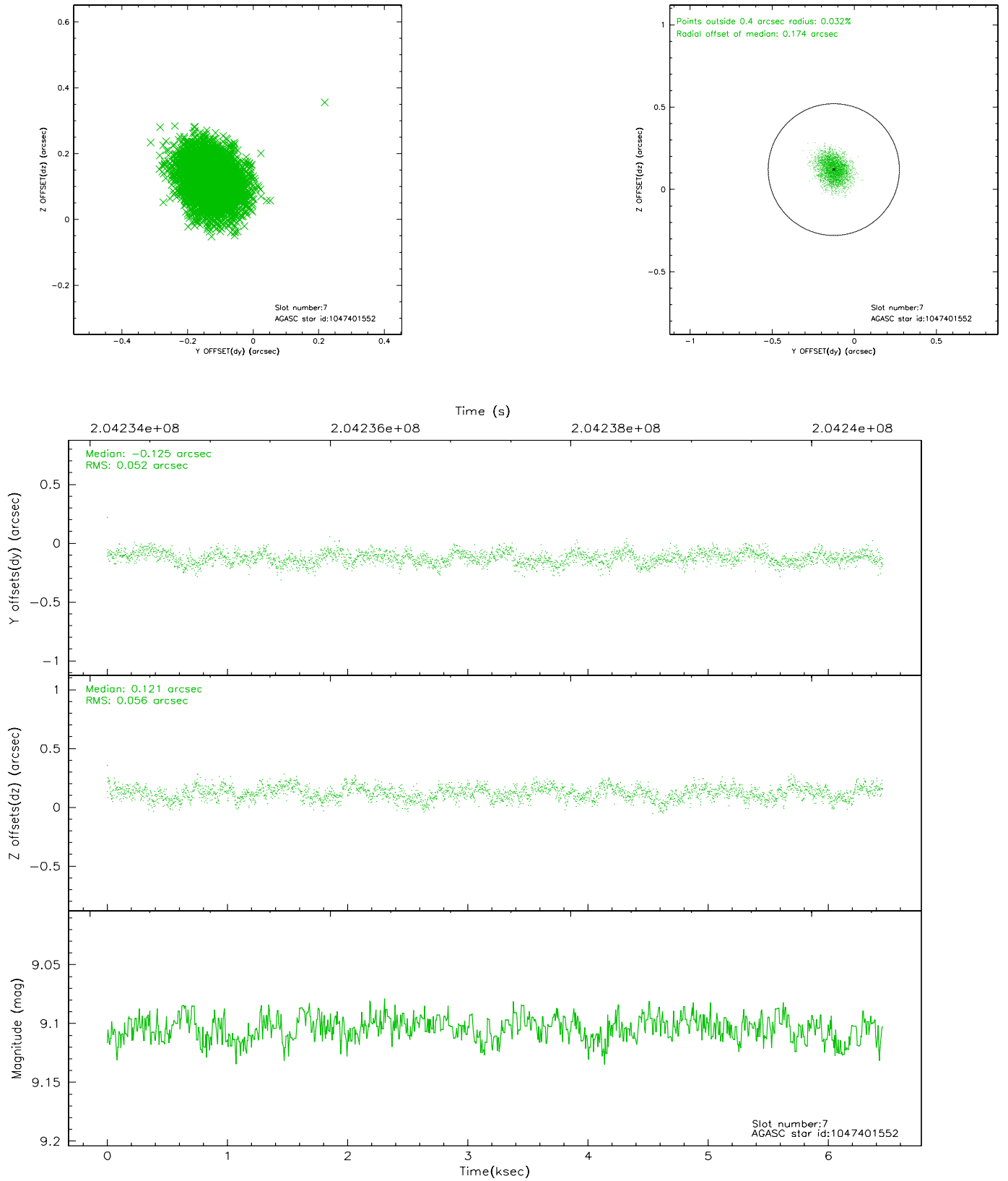
2.4.3 Slot 5



2.4.4 Slot 6

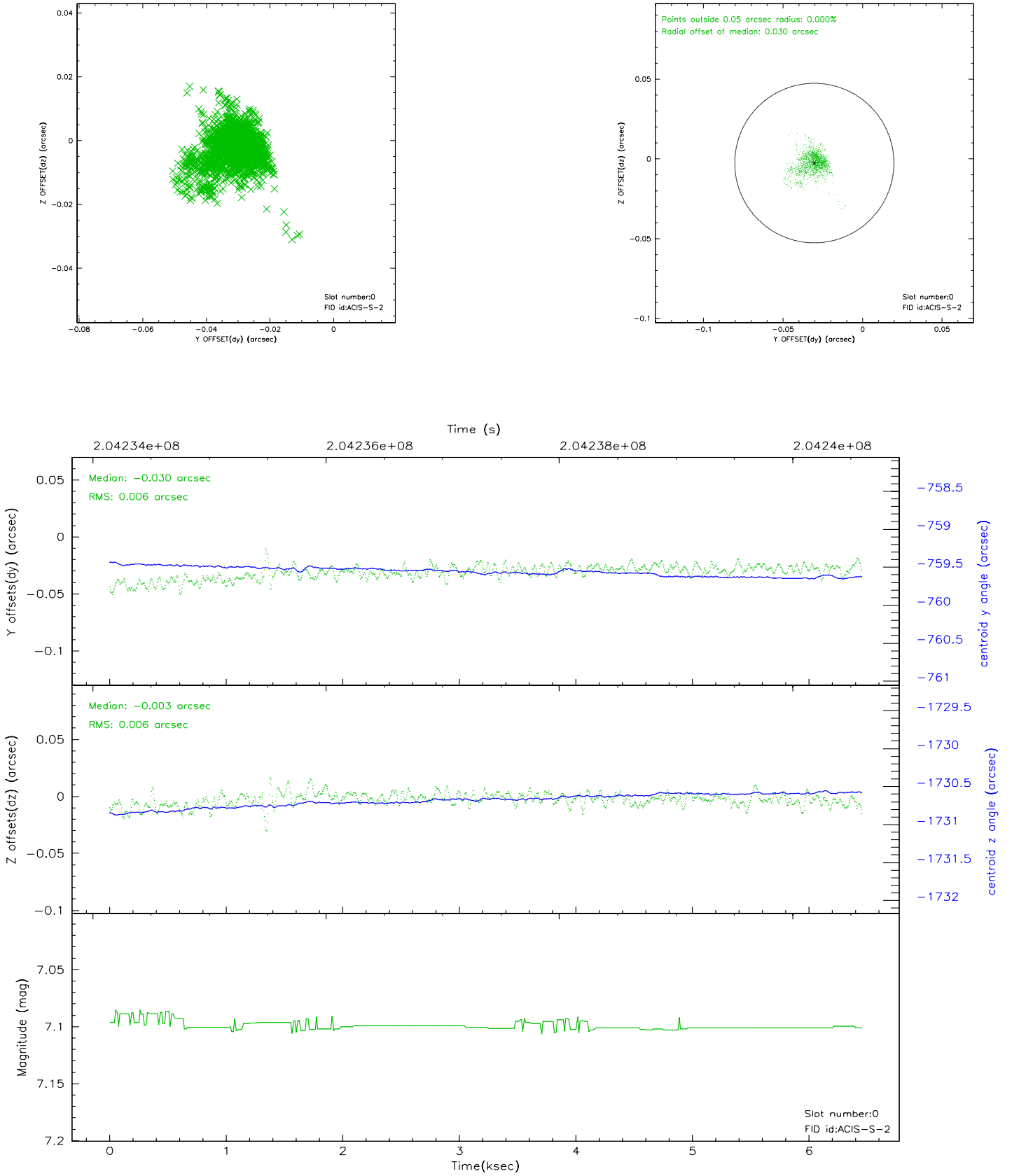


2.4.5 Slot 7

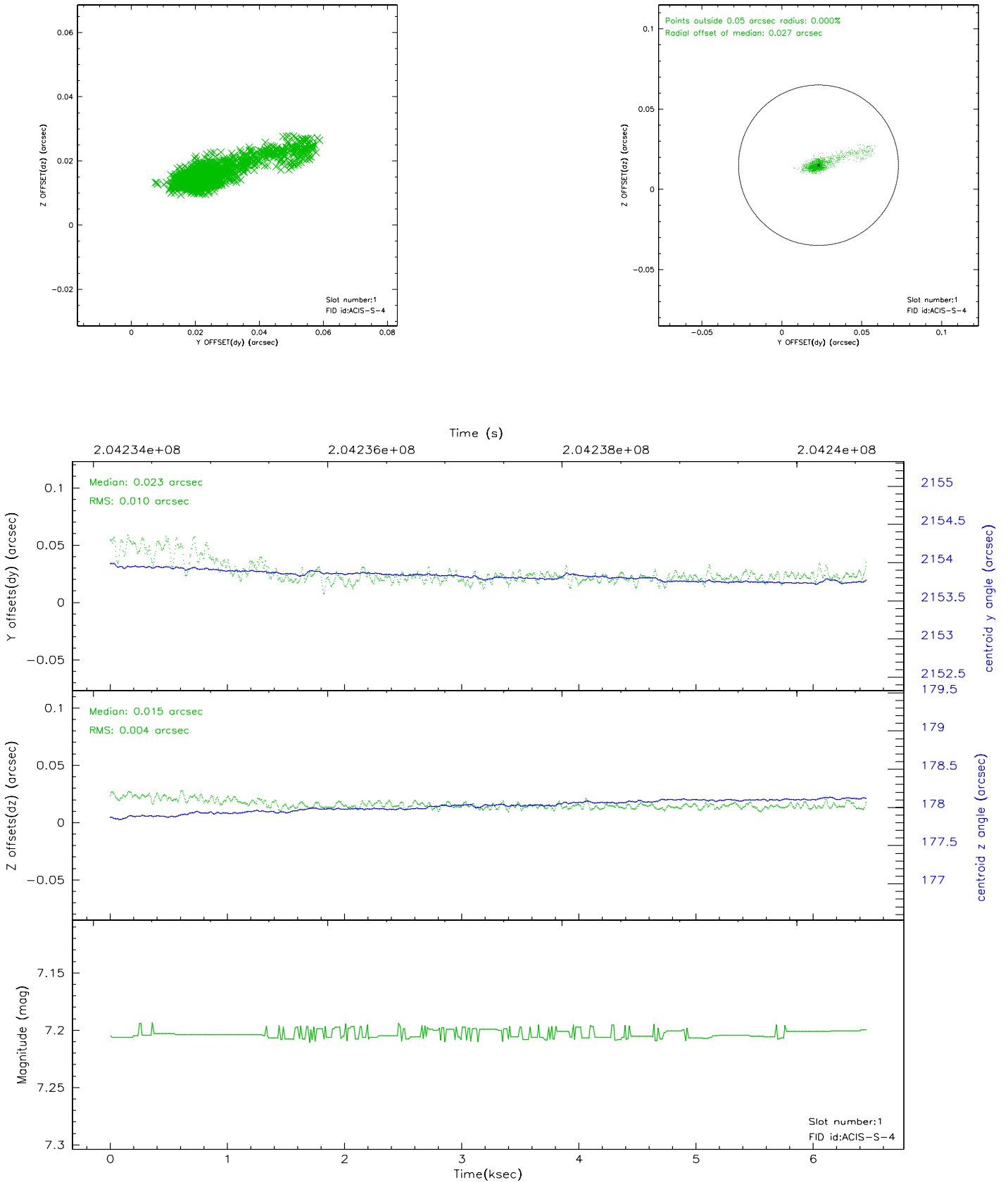


2.5 FID Slots

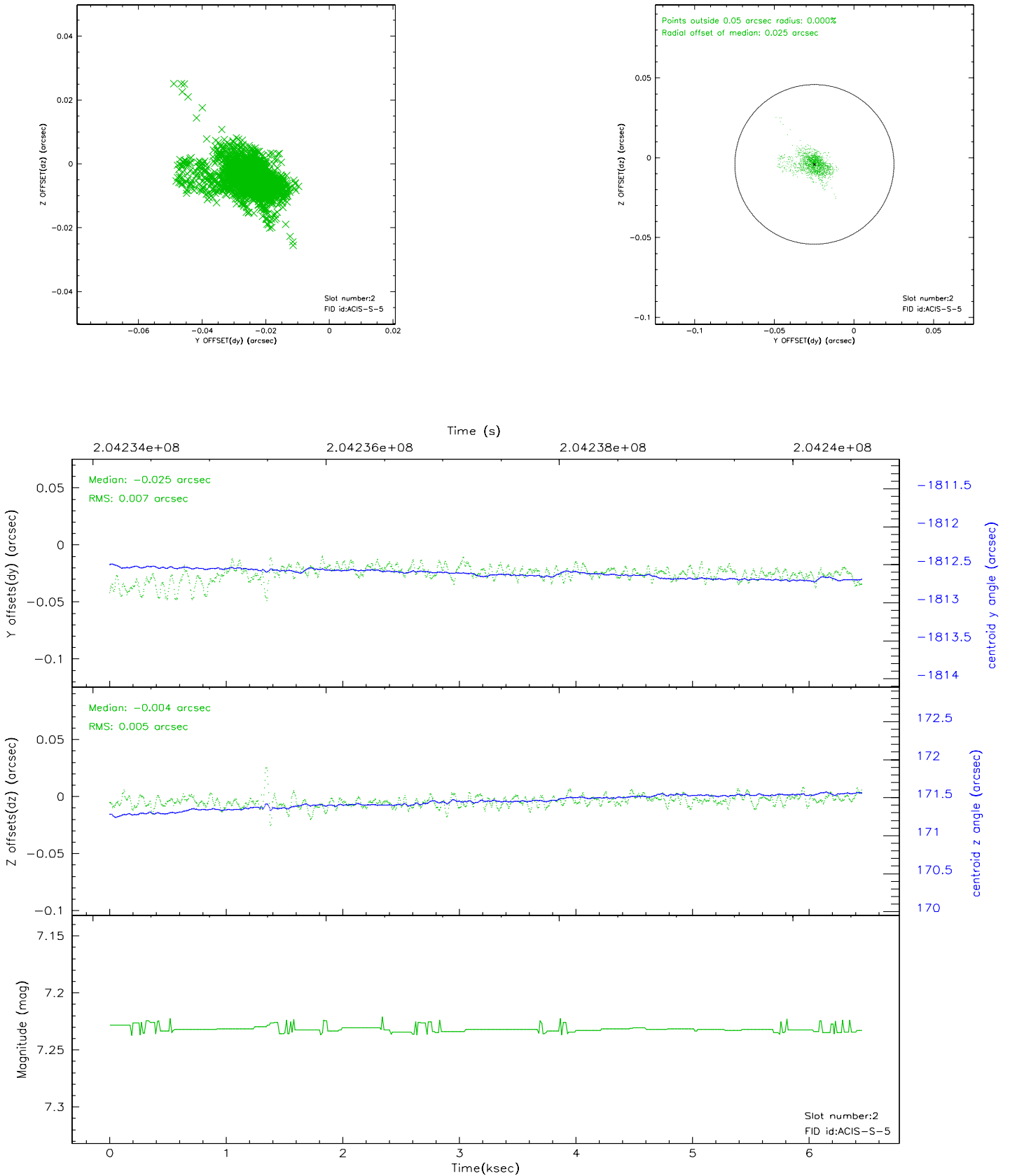
2.5.1 Slot 0



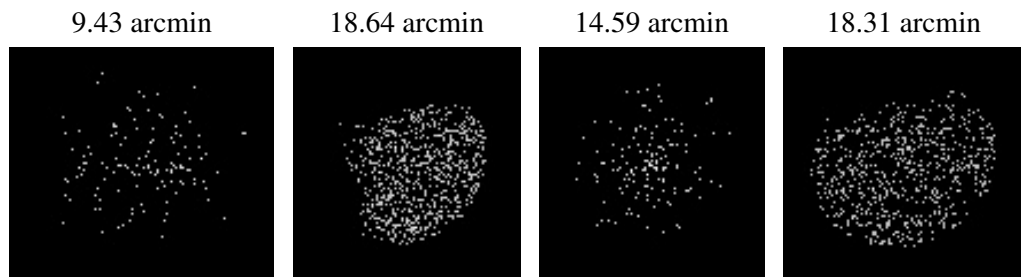
2.5.2 Slot 1



2.5.3 Slot 2



3 Point Sources



A Summary

A.1 Status

V&V Scientist	Beth Sundheim
V&V Date (YYYY-MM-DD)	2006.05.23
V&V Edition	1
V&V Disposition and Status	OK
V&V Charge Time	5.724

A.2 Comments