

V&V Reference Report

L2 ASCDS Version : 8.5

Observation 4709 - L2 Version 3
Chandra X-Ray Center

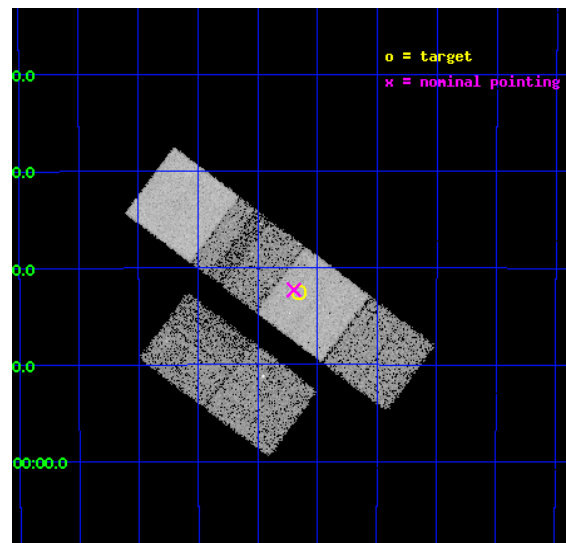
L2 Processing Date : Dec 8 2012

Contents

1	Front	2
2	OBI	3
2.1	OBI	3
2.1.1	Images	3
2.1.2	Bias	3
2.1.3	Parameters	4
2.1.4	Events	4
2.2	Compared Parameters	5
2.3	Aspect	6
2.4	Star Slots	9
2.4.1	Slot 3	9
2.4.2	Slot 4	10
2.4.3	Slot 5	11
2.4.4	Slot 6	12
2.4.5	Slot 7	13
2.5	FID Slots	14
2.5.1	Slot 0	14
2.5.2	Slot 1	15
2.5.3	Slot 2	16
A	Summary	17
A.1	Status	17
A.2	Comments	17

1 Front

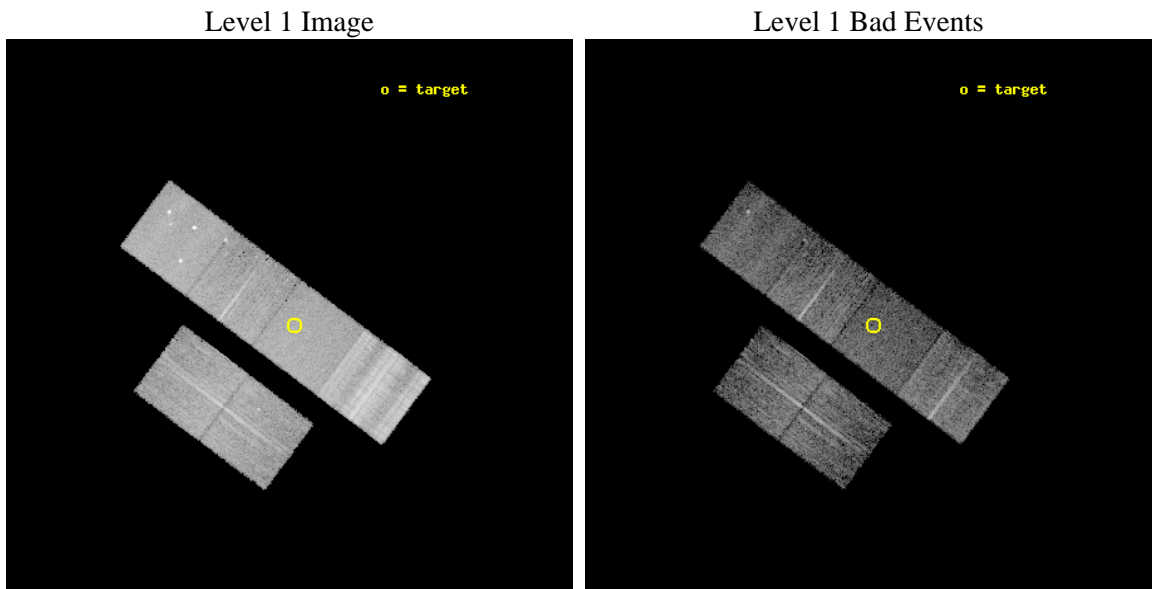
seq_num	600364	Sequence number
obs_id	4709	Observation id
title	Using the Sculptor Dwarf Spheroidal Galaxy to Constrain X-ray Binary Production in Population II	Proposal title
observer	Dr Thomas Maccarone	Principal investigator
object	SCULPTOR DWARF SPHEROIDAL	Source name
dtcycle	0	
cycle	P	events from which exps? Prim/Second/Both
ra_targ	15.039167	Observer's specified target RA [deg]
dec_targ	-33.708889	Observer's specified target Dec [deg]
ra_nom	15.049431990277	Nominal RA [deg]
dec_nom	-33.704526664951	Nominal Dec [deg]
roll_nom	36.807427004944	Nominal Roll [deg]
revision	3	Processing version of data
ontime	6169.5999770164	Sum of GTIs [s]
livetime	6091.4767872204	Livetime [s]
ontime2	6169.5999770164	Sum of GTIs [s]
ontime3	6169.5999770164	Sum of GTIs [s]
ontime5	6169.5999770164	Sum of GTIs [s]
ontime6	6169.5999770164	Sum of GTIs [s]
ontime7	6169.5999770164	Sum of GTIs [s]
ontime8	6169.5999770164	Sum of GTIs [s]
l2events	90794	Number of level 2 events



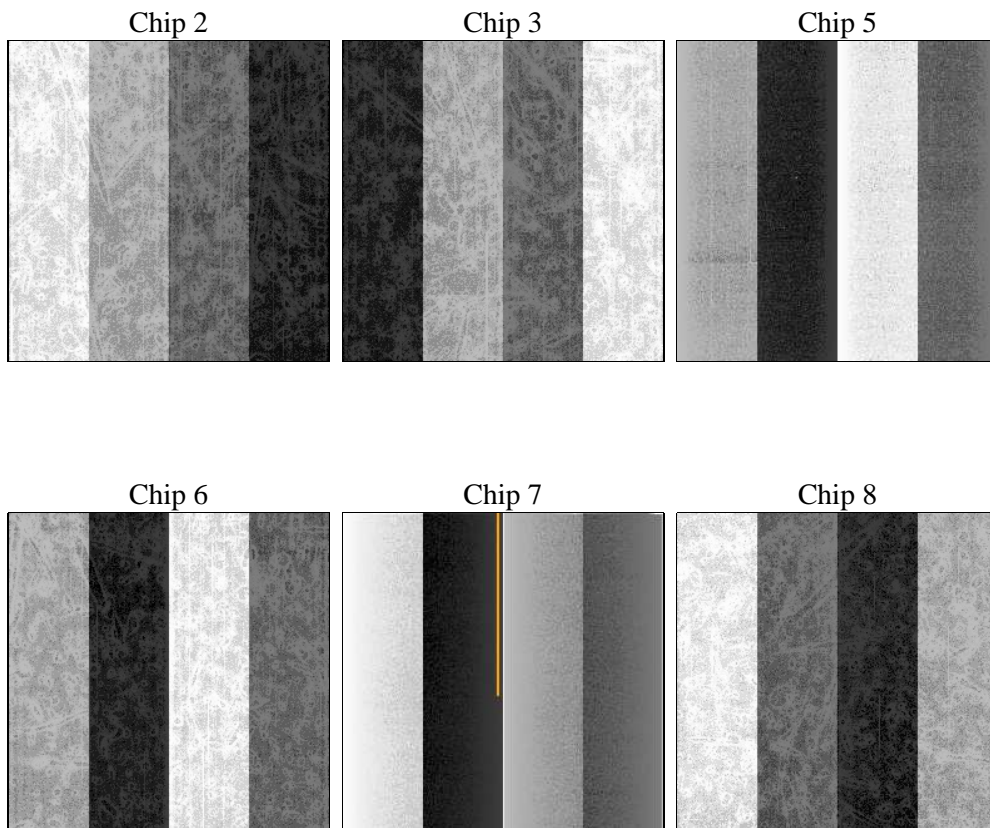
2 OBI

2.1 OBI

2.1.1 Images



2.1.2 Bias



2.1.3 Parameters

obi_num	1	Obi number	sched_exp_time	6000.000000	[s] Scheduled observation exposure time
ascdsver	8.5	Processing system revision	ontime	6169.5999770164	Sum of GTIs [s]
caldsver	4.5.4	 	ontime2	6169.5999770164	Sum of GTIs [s]
date	2012-12-09T00:45:52	Date and time of file creation	ontime3	6169.5999770164	Sum of GTIs [s]
revision	3	Processing version of data	ontime5	6169.5999770164	Sum of GTIs [s]
			ontime6	6169.5999770164	Sum of GTIs [s]
			ontime7	6169.5999770164	Sum of GTIs [s]
			ontime8	6169.5999770164	Sum of GTIs [s]
			l1events	500114	Number of level 1 events

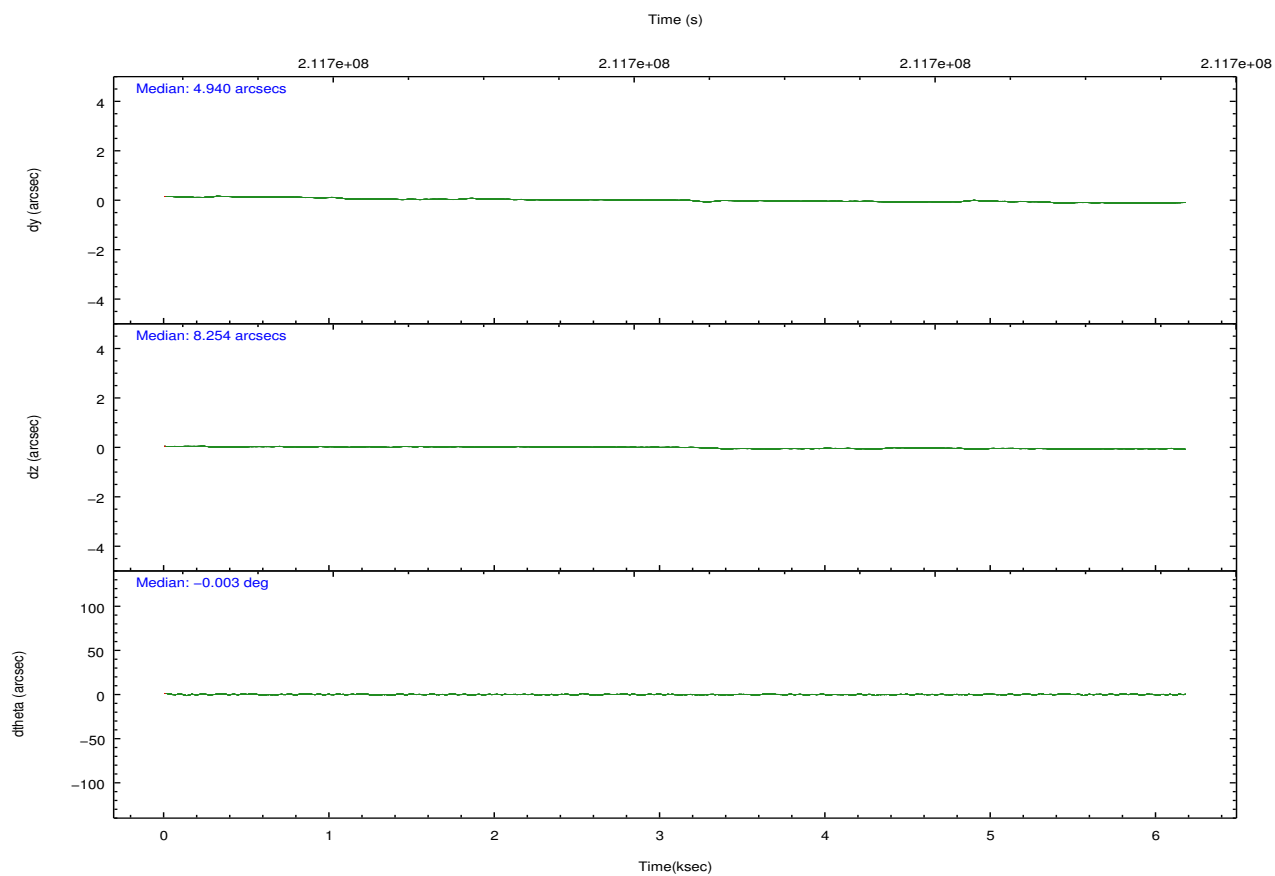
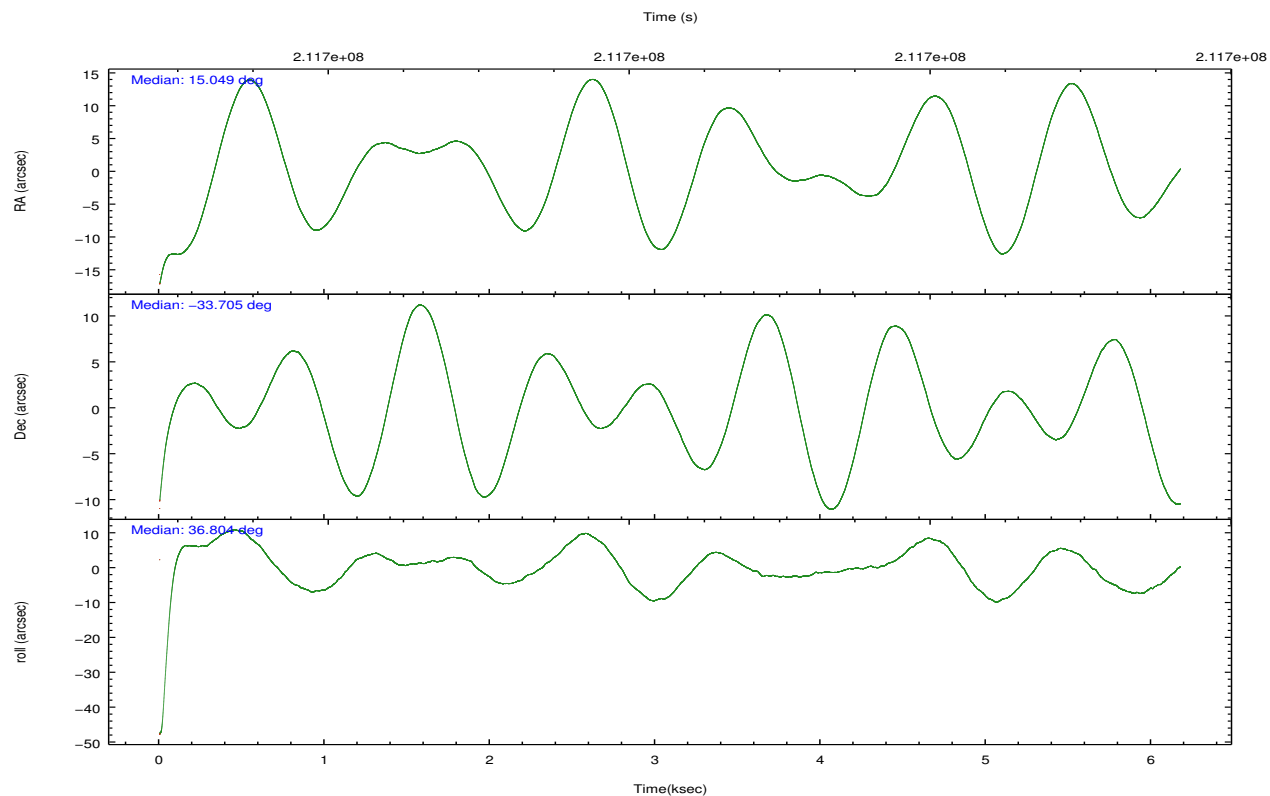
2.1.4 Events

	ccd 2	ccd 3	ccd 5	ccd 6	ccd 7	ccd 8		ccd 2	ccd 3	ccd 5	ccd 6	ccd 7	ccd 8
level 1 events	68275	62081	88380	68137	74246	138995	grade 0 events	5022	4328	7007	4681	3093	25827
rejected events	58410	52560	52469	58106	47363	75337		7%	6%	7%	6%	4%	18%
rejected %	85%	84%	59%	85%	63%	54%	grade 1 events	43	38	334	29	70	230
								0%	0%	0%	0%	0%	0%
							grade 2 events	2857	3133	11949	3582	6543	10223
								4%	5%	13%	5%	8%	7%
							grade 3 events	605	622	2046	661	2909	13409
								0%	1%	2%	0%	3%	9%
							grade 4 events	884	676	1893	661	2825	12133
								1%	1%	2%	0%	3%	8%
							grade 5 events	2148	2260	6068	2373	6819	3771
								3%	3%	6%	3%	9%	2%
							grade 6 events	2217	2274	19487	2156	16543	13527
								3%	3%	22%	3%	22%	9%
							grade 7 events	54499	48750	39596	53994	35444	59875
								79%	78%	44%	79%	47%	43%

2.2 Compared Parameters

Parameter	Planned	Actual	Parameter	Planned	Actual
Instrument	ACIS	ACIS	Obspar format version number	7	7
Detector	ACIS-235678	ACIS-235678	Obspar file type	PREDICTED	ACTUAL
Grating	NONE	NONE	Obspar update status	NONE	UPDATED
Data mode	VFAINT	VFAINT	Number of optional ACIS chips dropped	0	0
Observation mode	POINTING	POINTING	On-chip summing requested	N	N
[deg] Pointing RA	15.037057	15.04943199027662	Subarray requested	NONE	NONE
[deg] Pointing Dec	-33.729712	-33.70452666495088	Alternating exposures requested	N	N
[deg] Pointing Roll	36.644041	36.80742700494426	[s] Primary exposure time	0.000000	3.2
[mm] SIM focus pos	-0.684267	-0.6828225247311905			
[mm] SIM defocus	0	0.001444936568705701			
[mm] SIM translation stage pos	-190.132523	-190.1425803651734			
[mm] SIM translation stage offset	0	0.01005778216563158			
[s] Observation start time (MET)	211695366.184000	211693727.07297			
Observation start date	2004-09-16T04:15:02	2004-09-16T03:48:47			
[s] Observation end time (MET)	211701366.184000	211702540.53586			
Observation end date	2004-09-16T05:55:02	2004-09-16T06:15:40			
Read mode	TIMED	TIMED			

2.3 Aspect

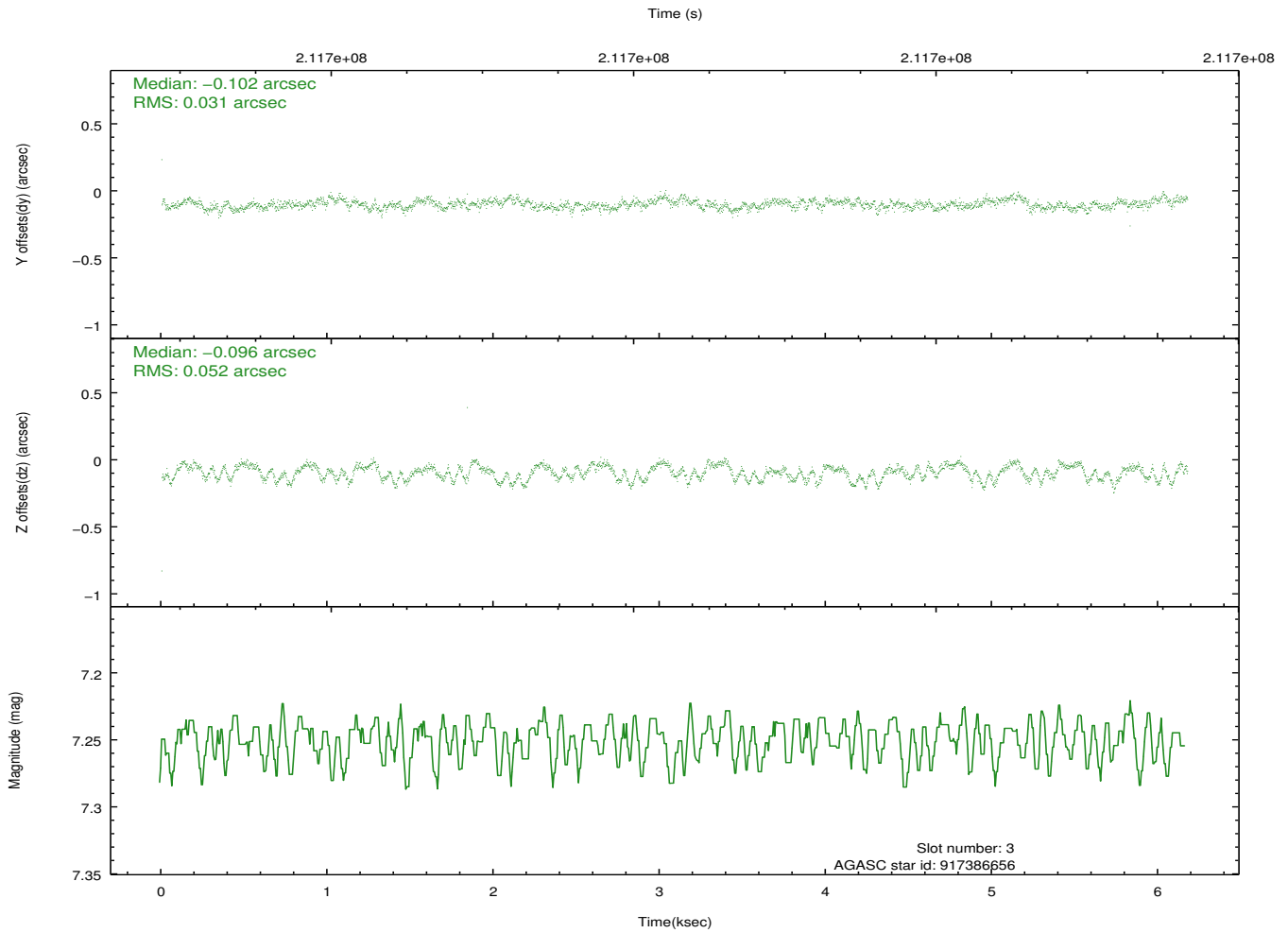
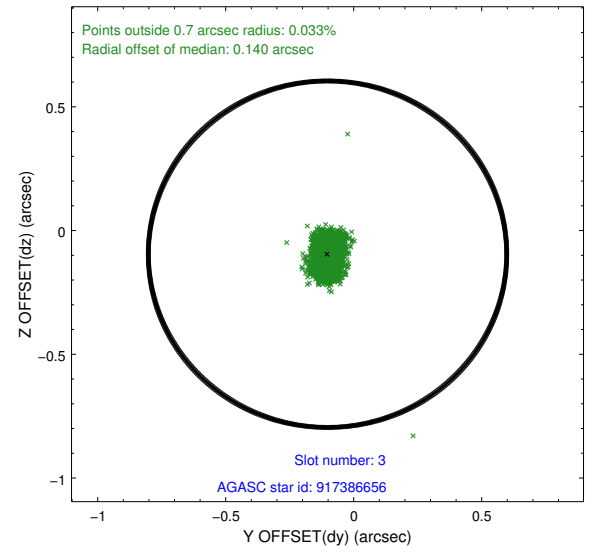
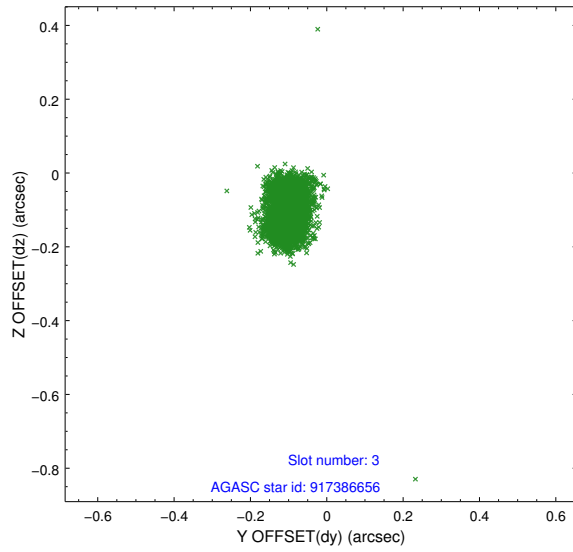


Slot Statistics

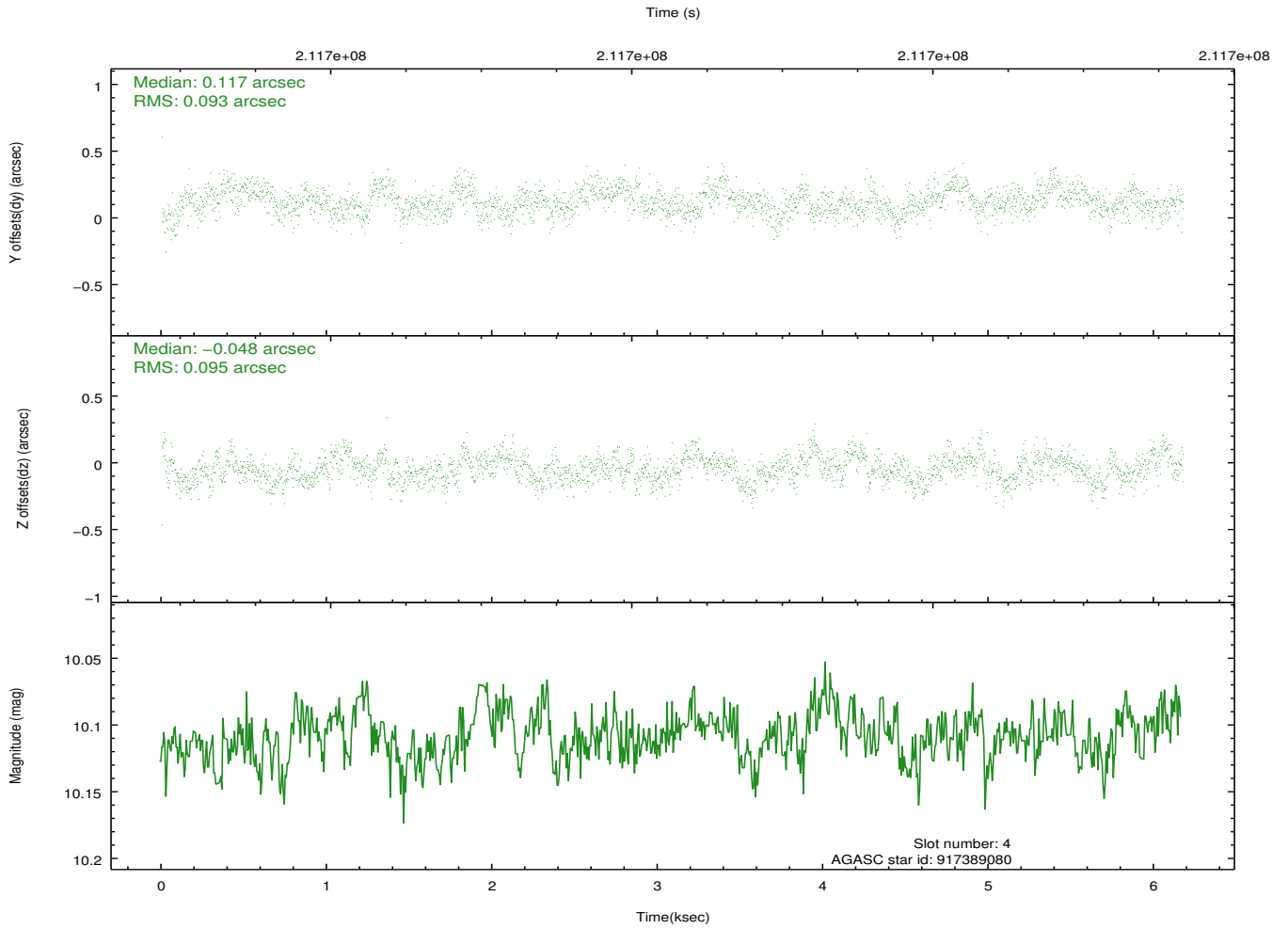
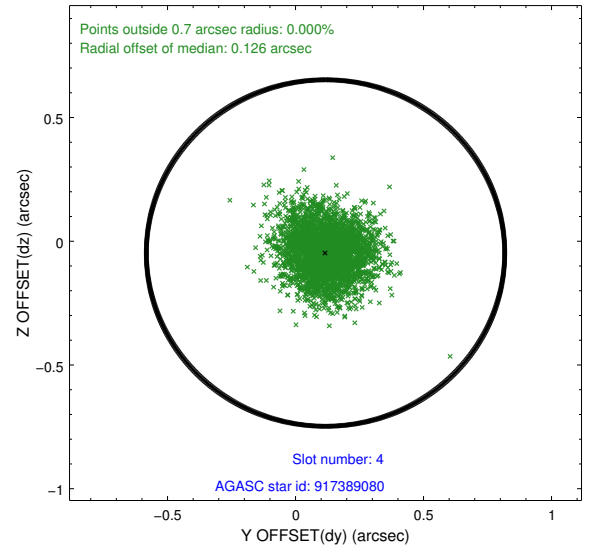
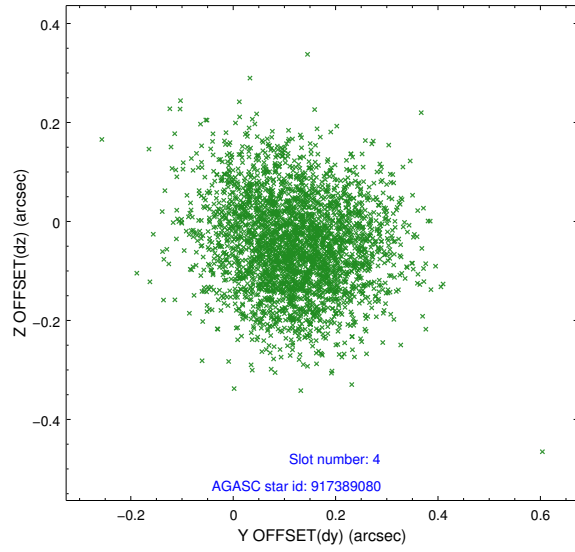
slot	status	id	mag	n_pts	med_dy	med_dz	dr1	dr2	ra	dec	mean_y	mean_z
0	FID	ACIS-S-2	7.10	1506	-0.045	-0.061	0.007	0.011	0.000000	0.000000	-757.70	-1729.44
1	FID	ACIS-S-4	7.21	1507	0.123	0.038	0.007	0.012	0.000000	0.000000	2155.33	178.13
2	FID	ACIS-S-5	7.23	1507	-0.109	0.032	0.007	0.011	0.000000	0.000000	-1809.36	172.92
3	GUIDE	917386656	7.25	3012	-0.102	-0.096	0.063	0.099	15.342124	-33.359890	1530.14	519.41
4	GUIDE	917389080	10.11	3005	0.117	-0.048	0.142	0.225	15.722484	-33.662555	1789.18	-1037.34
5	GUIDE	917389288	9.57	3010	-0.096	0.031	0.114	0.184	15.394706	-33.185862	2032.78	925.77
6	GUIDE	917390768	9.87	3012	-0.001	0.080	0.137	0.215	14.870561	-33.104152	941.98	2106.46
7	GUIDE	917650528	8.71	3011	0.073	0.038	0.062	0.099	14.274554	-33.869842	-2134.13	949.16

2.4 Star Slots

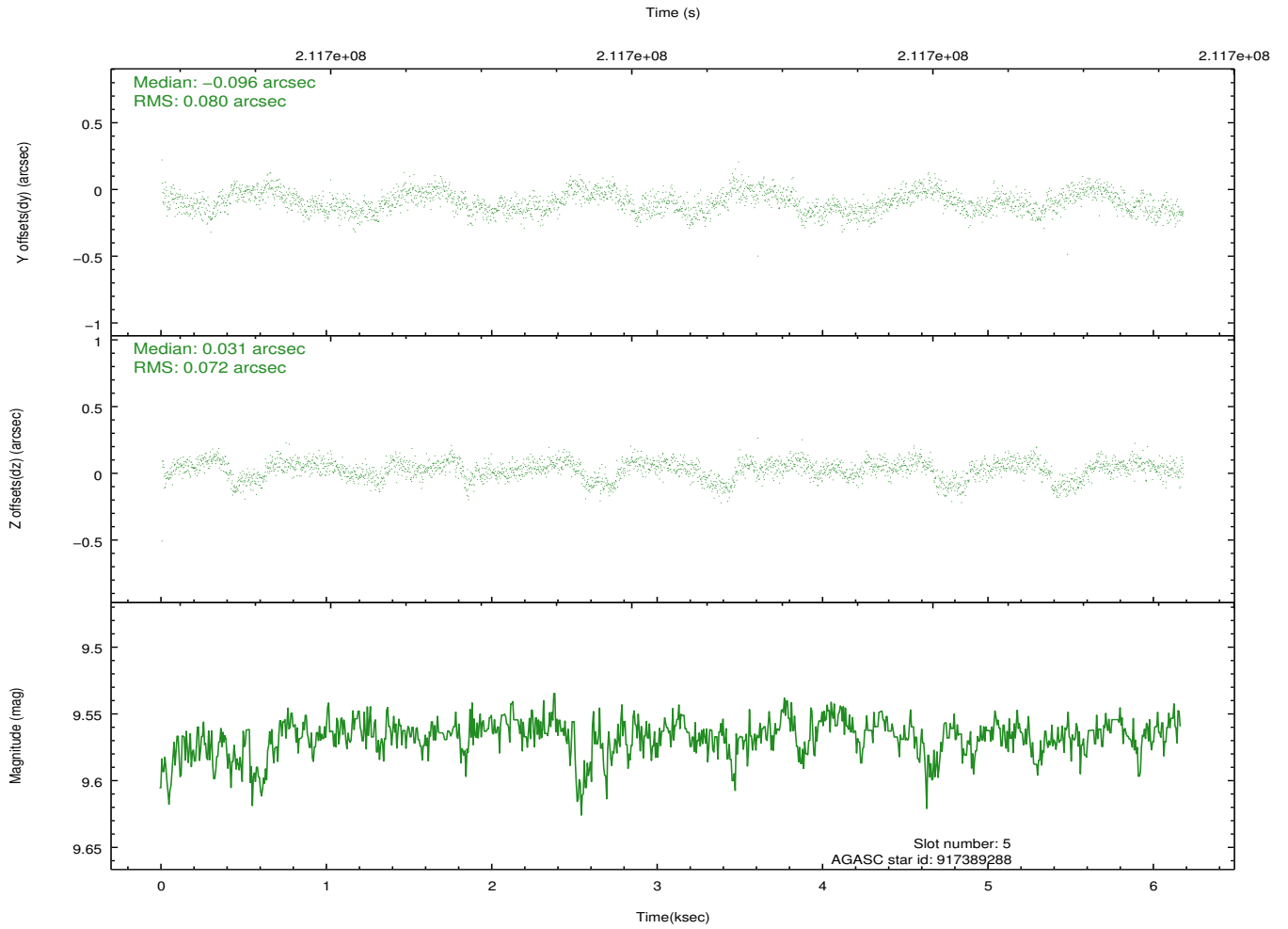
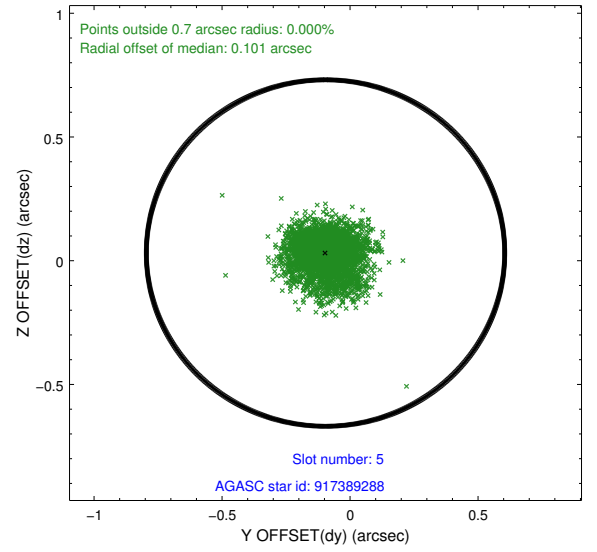
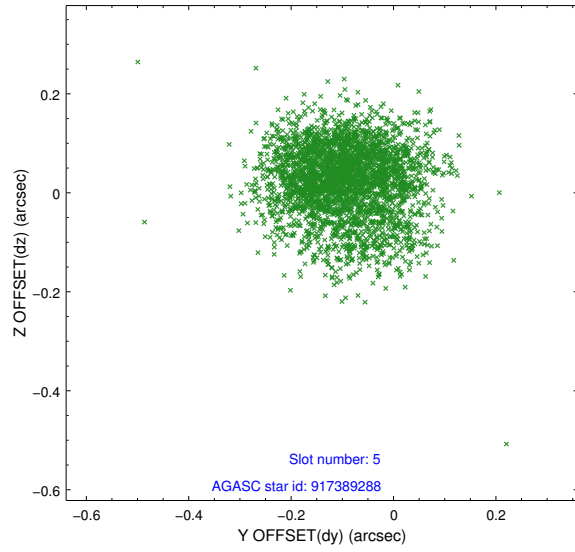
2.4.1 Slot 3



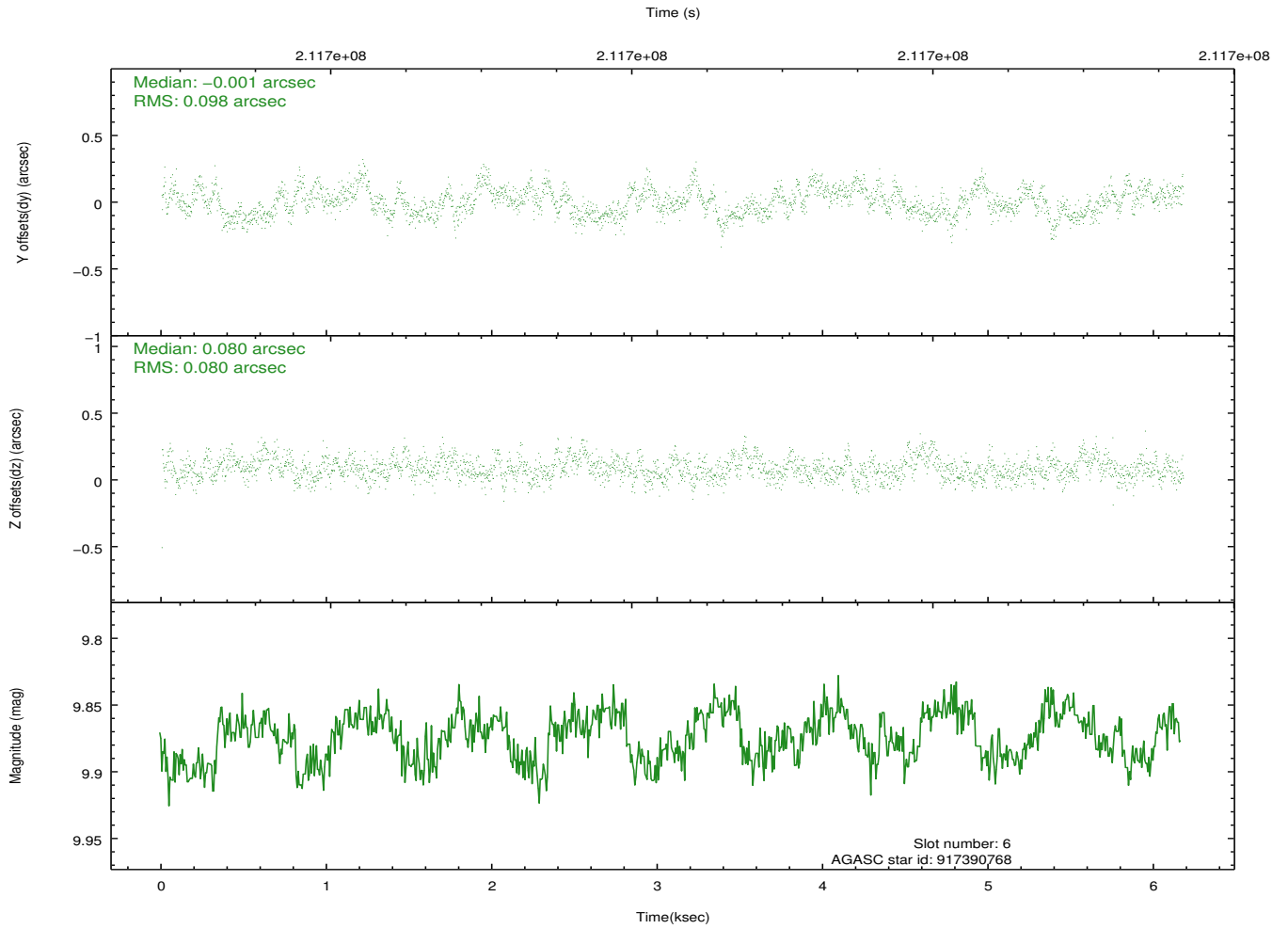
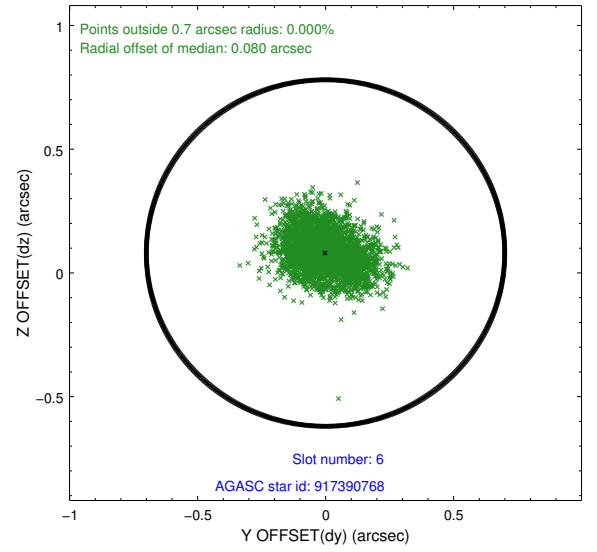
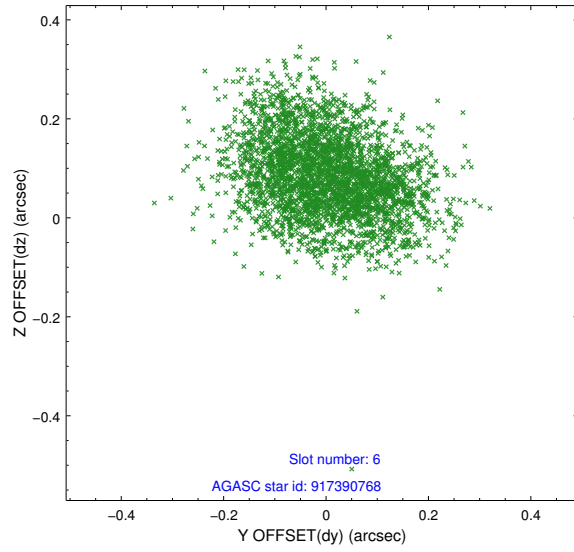
2.4.2 Slot 4



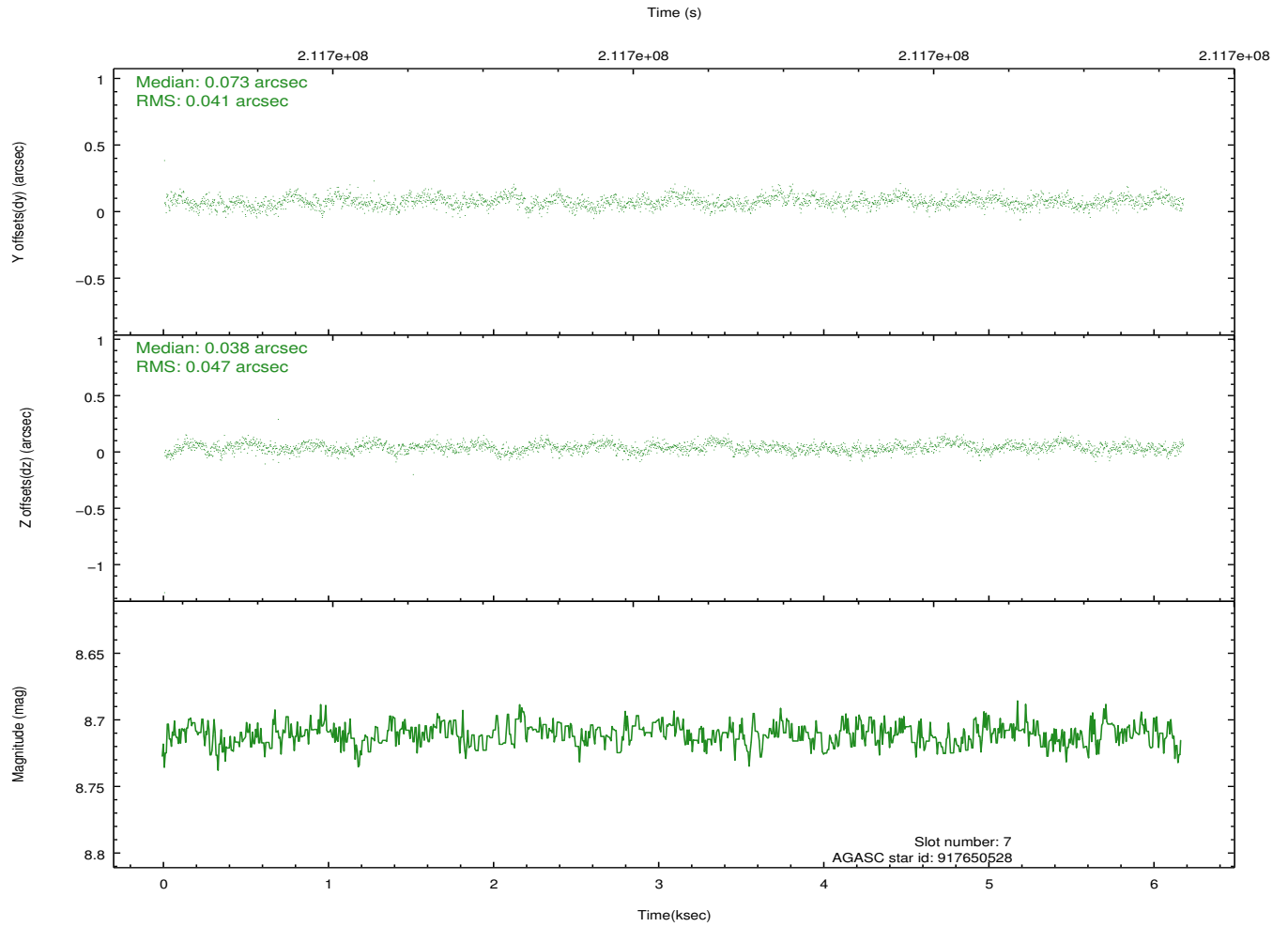
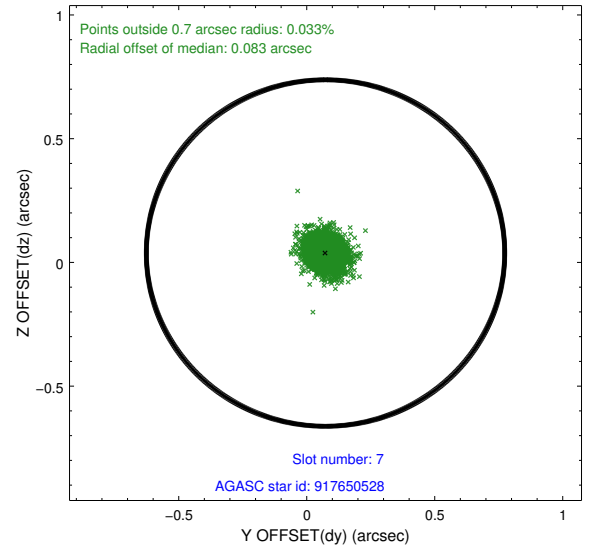
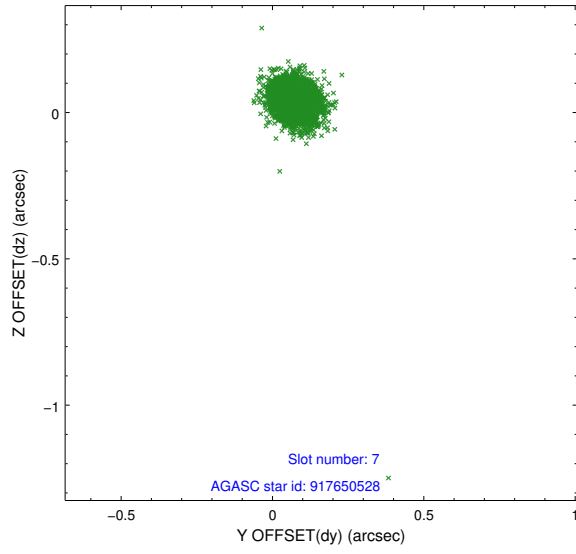
2.4.3 Slot 5



2.4.4 Slot 6

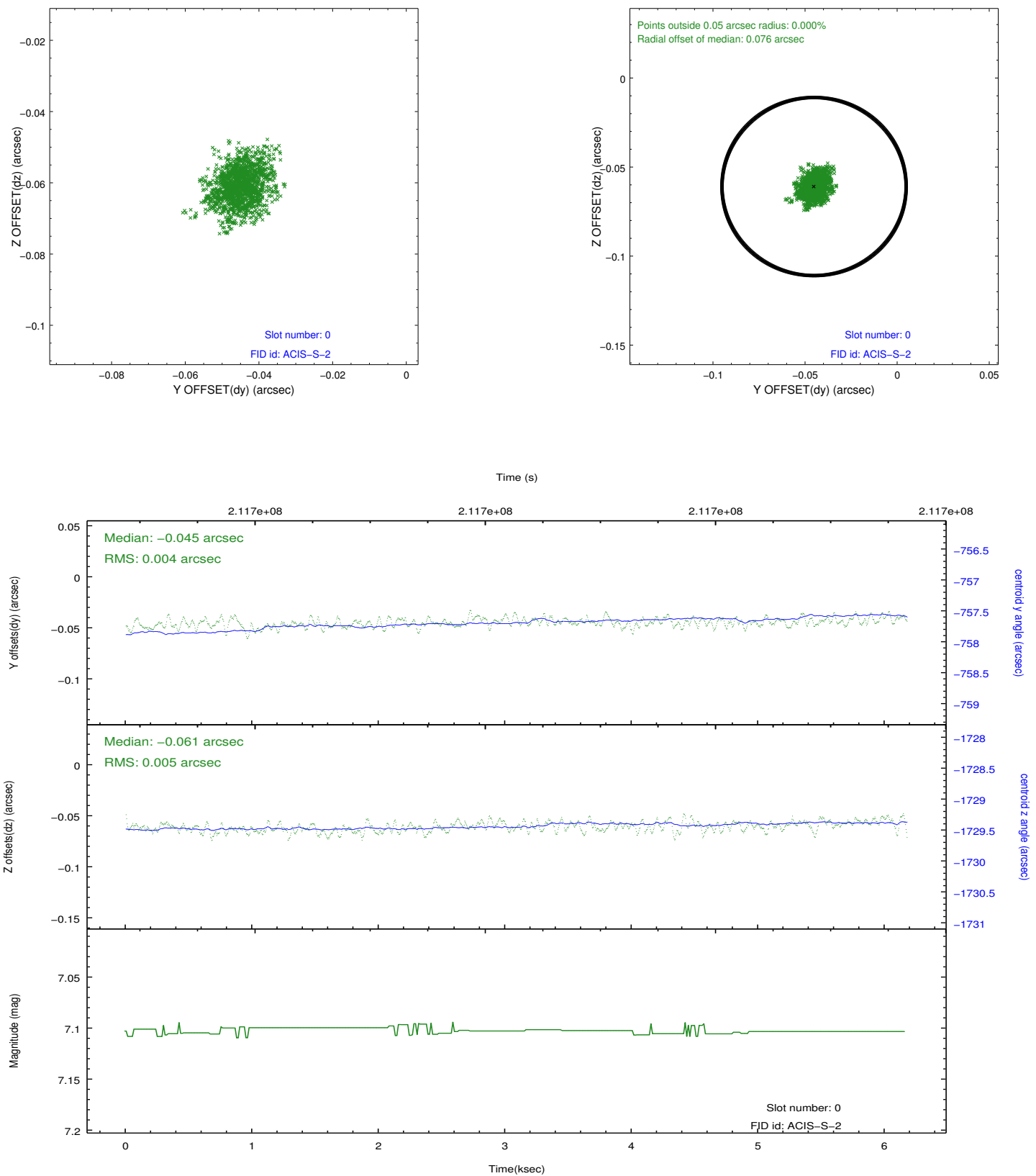


2.4.5 Slot 7

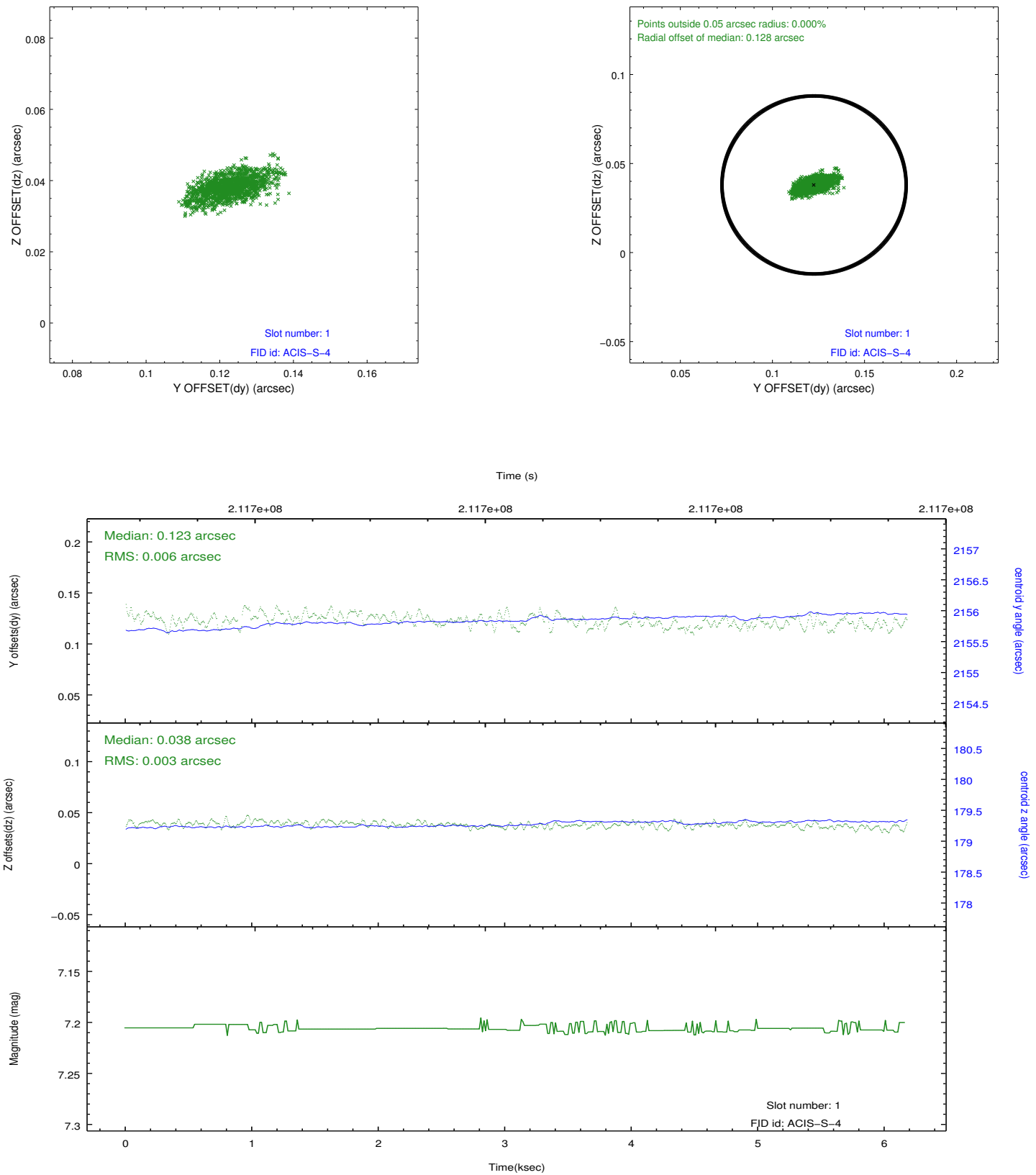


2.5 FID Slots

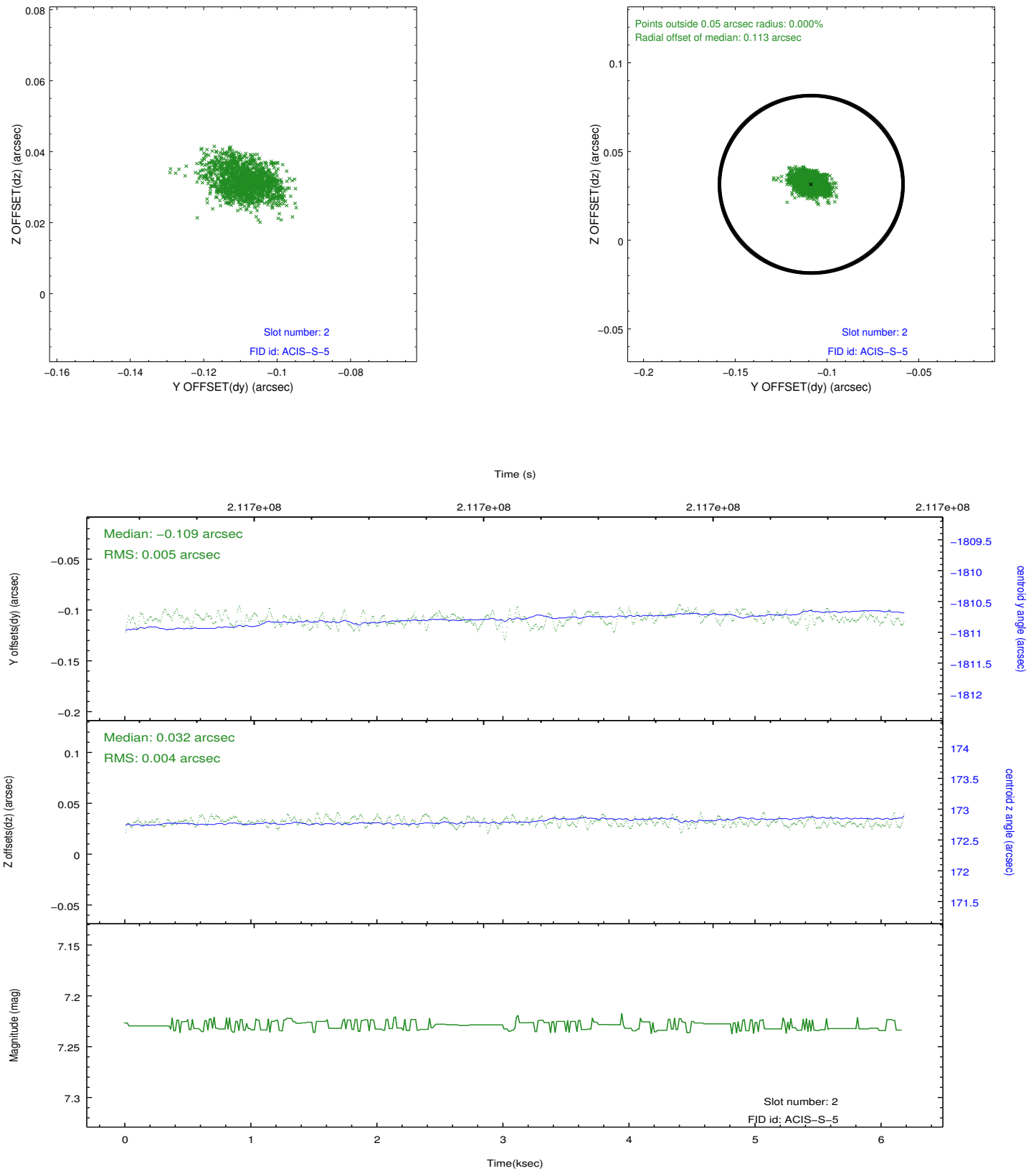
2.5.1 Slot 0



2.5.2 Slot 1



2.5.3 Slot 2



A Summary

A.1 Status

V&V Scientist	Beth Sundheim
V&V Date (YYYY-MM-DD)	2012.12.27
V&V Edition	1
V&V Disposition and Status	OK
V&V Charge Time	6.169

A.2 Comments

Joint proposal with NOAO.