

V&V Reference Report

L2 ASCDS Version : 8.1.2

Observation 469 - L2 Version 3

Chandra X-Ray Center

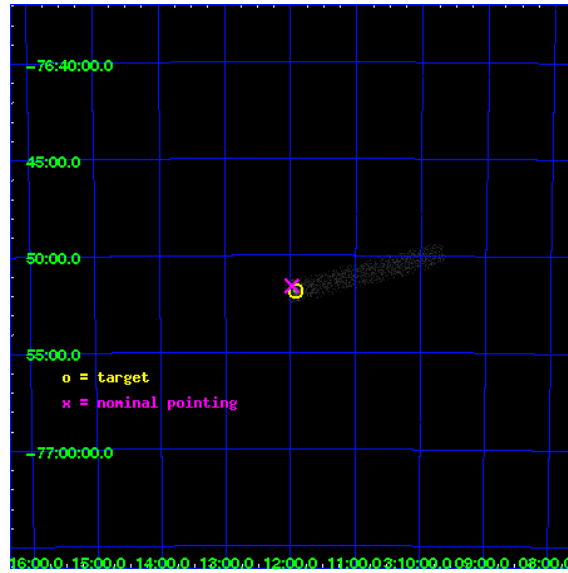
L2 Processing Date : Dec 17 2009

Contents

1	Front	2
2	OBI	3
2.1	OBI	3
2.1.1	Images	3
2.1.2	Bias	3
2.1.3	Parameters	4
2.1.4	Events	4
2.2	Compared Parameters	5
2.3	Aspect	6
2.4	Star Slots	9
2.4.1	Slot 3	9
2.4.2	Slot 4	10
2.4.3	Slot 5	11
2.4.4	Slot 6	12
2.4.5	Slot 7	13
2.5	FID Slots	14
2.5.1	Slot 0	14
2.5.2	Slot 1	15
2.5.3	Slot 2	16
3	Point Sources	17
A	Summary	18
A.1	Status	18
A.2	Comments	18

1 Front

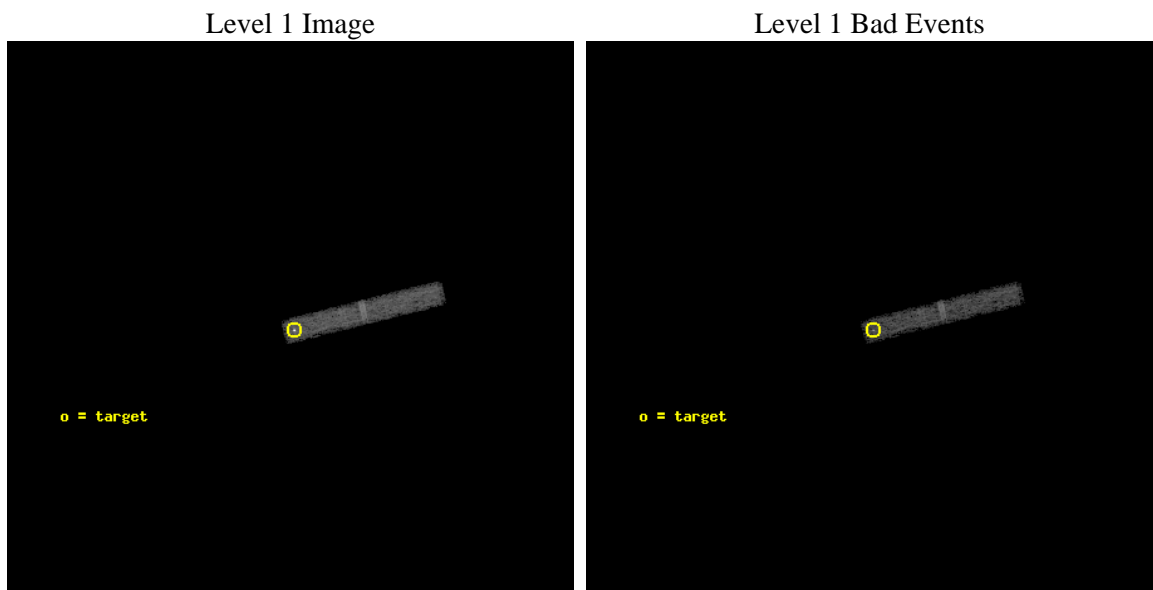
seq_num	790030	Sequence number
obs_id	469	Observation id
title	Blank sky; mispointed calibration	Proposal title
observer	Dr. CXC Calibration	Principal investigator
object	PKS0312-770	Source name
dtcycle	0	
cycle	P	events from which exps? Prim/Second/Both
ra_targ	47.98	Observer's specified target RA
dec_targ	-76.864167	Observer's specified target Dec
ra_nom	47.995351315093	Nominal RA
dec_nom	-76.859671004155	Nominal Dec
roll_nom	76.211633924289	Nominal Roll
revision	3	Processing version of data
ontime	12895.914193757	Sum of GTIs [s]
livetime	11917.708666417	Livetime [s]
ontime3	12895.914193757	Sum of GTIs [s]
l2events	8255	Number of level 2 events



2 OBI

2.1 OBI

2.1.1 Images



2.1.2 Bias

Chip 3



2.1.3 Parameters

obi_num	0	Obi number	sched_exp_time	13000.000000	Scheduled observation exposure time
ascdsver	8.1.2	ASCDS version number	ontime	12895.914193757	Sum of GTIs [s]
caldbver	4.1.4	 	ontime3	12895.914193757	Sum of GTIs [s]
date	2009-12-17T09:41:08	Date and time of file creation	ll events	34247	Number of level 1 events
revision	3	Processing version of data			

2.1.4 Events

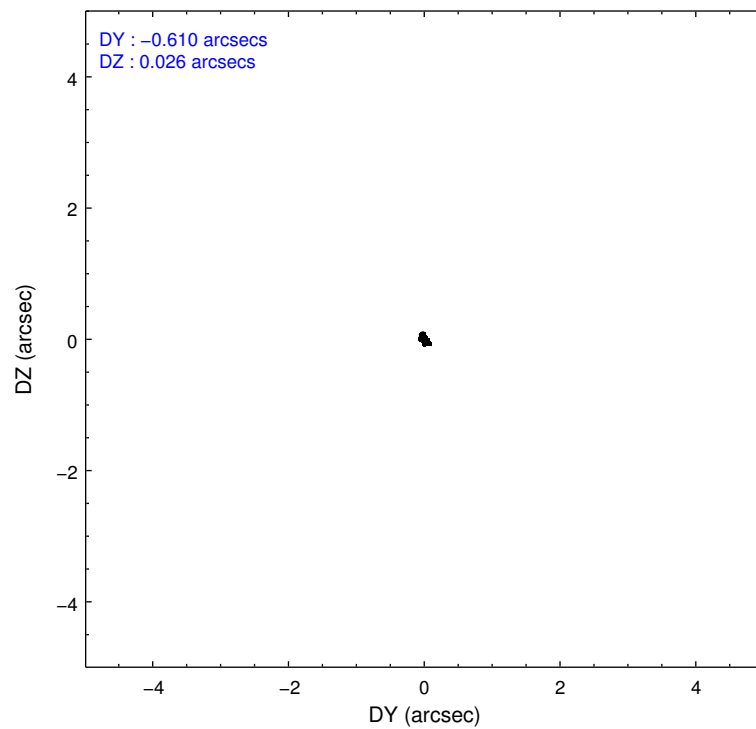
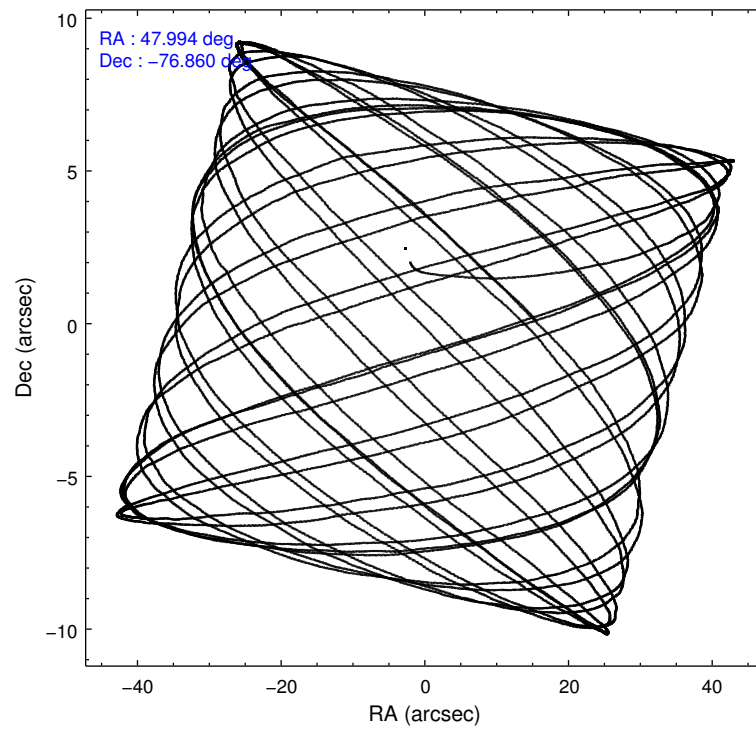
	ccd 3
level 1 events	34247
rejected events	25397
rejected %	74%

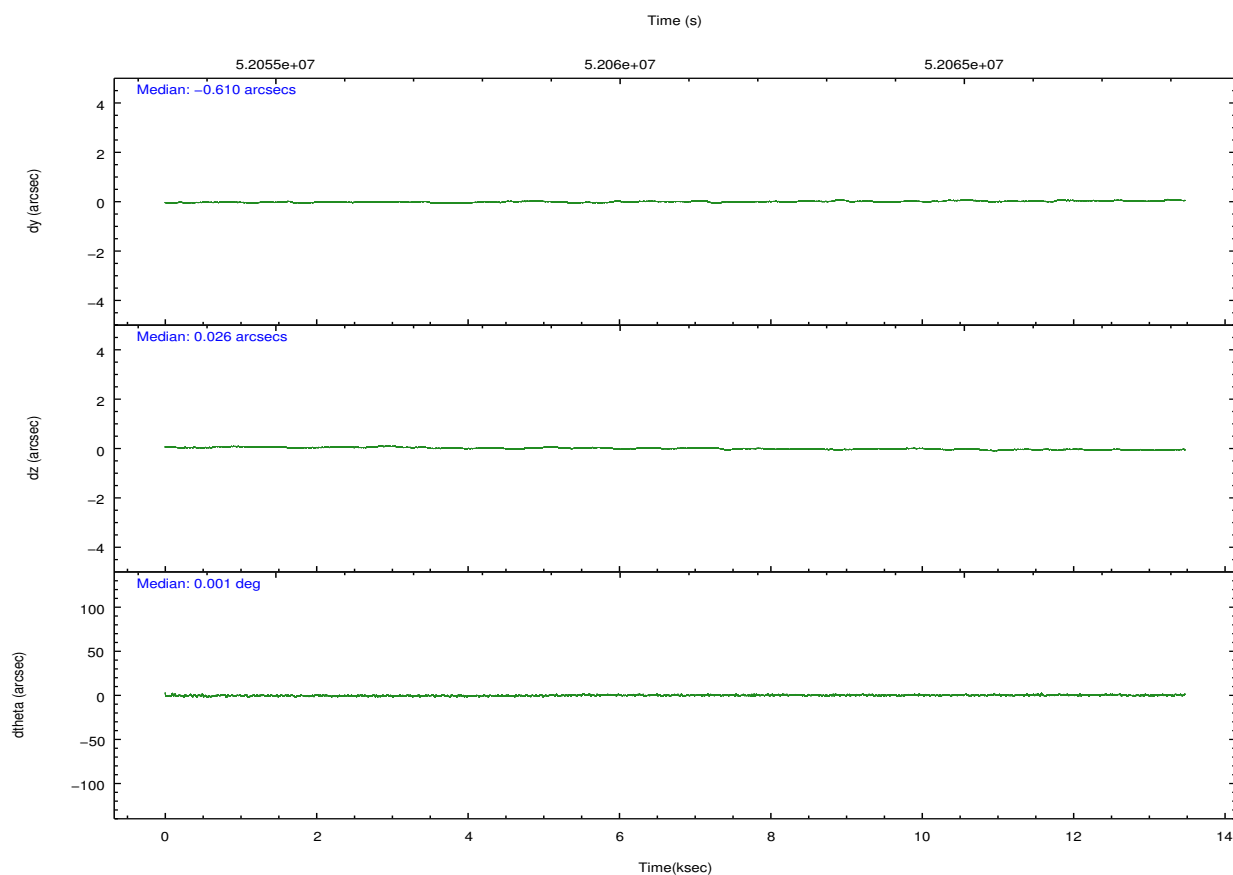
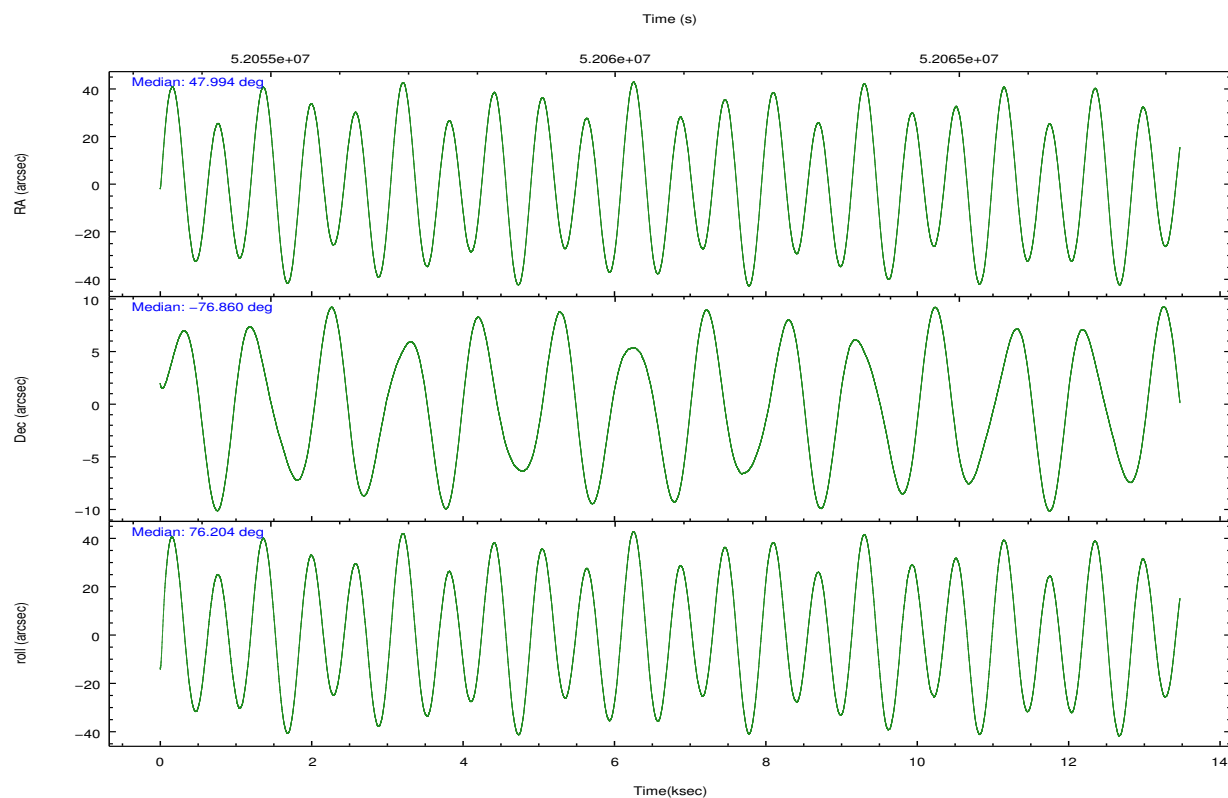
	ccd 3
grade 0 events	5551
	16%
grade 1 events	137
	0%
grade 2 events	1371
	4%
grade 3 events	671
	1%
grade 4 events	644
	1%
grade 5 events	415
	1%
grade 6 events	613
	1%
grade 7 events	24845
	72%

2.2 Compared Parameters

Parameter	Planned	Actual	Parameter	Planned	Actual
Instrument	ACIS	ACIS	Obspar format version number	6	6
Detector	ACIS-3	ACIS-3	Obspar file type	PREDICTED	ACTUAL
Grating	NONE	NONE	Obspar update status	NONE	UPDATED
Data mode	VFAINT	VFAINT	Number of optional ACIS chips dropped	0	0
Observation mode	POINTING	POINTING	On-chip summing requested	N	N
Pointing RA	48.026361	47.99535131509307	Subarray requested	CUSTOM	1/8
Pointing Dec	-76.886701	-76.85967100415502	Subarray start row	896	896
Pointing Roll	76.033161	76.21163392428934	Subarray row count	128	128
Window start time	49852864.184000	49852864.184000	Alternating exposures requested	N	N
Window stop time	55036864.184000	55036864.184000	Primary exposure time	0.000000	0.5
SIM focus pos (mm)	-0.782348	-0.7809083437167272			
SIM defocus (mm)	0	0.001439871863259334			
SIM translation stage pos (mm)	-233.592463	-233.5874344608287			
SIM translation stage offset (mm)	0	-0.005018542100998502			
Observation start time	52054534.184000	52053638.545163			
Observation start date	1999-08-26T11:34:30	1999-08-26T11:20:38			
Observation end time	52067534.184000	52068050.045681			
Observation end date	1999-08-26T15:11:10	1999-08-26T15:20:50			
Read mode	TIMED	TIMED			

2.3 Aspect



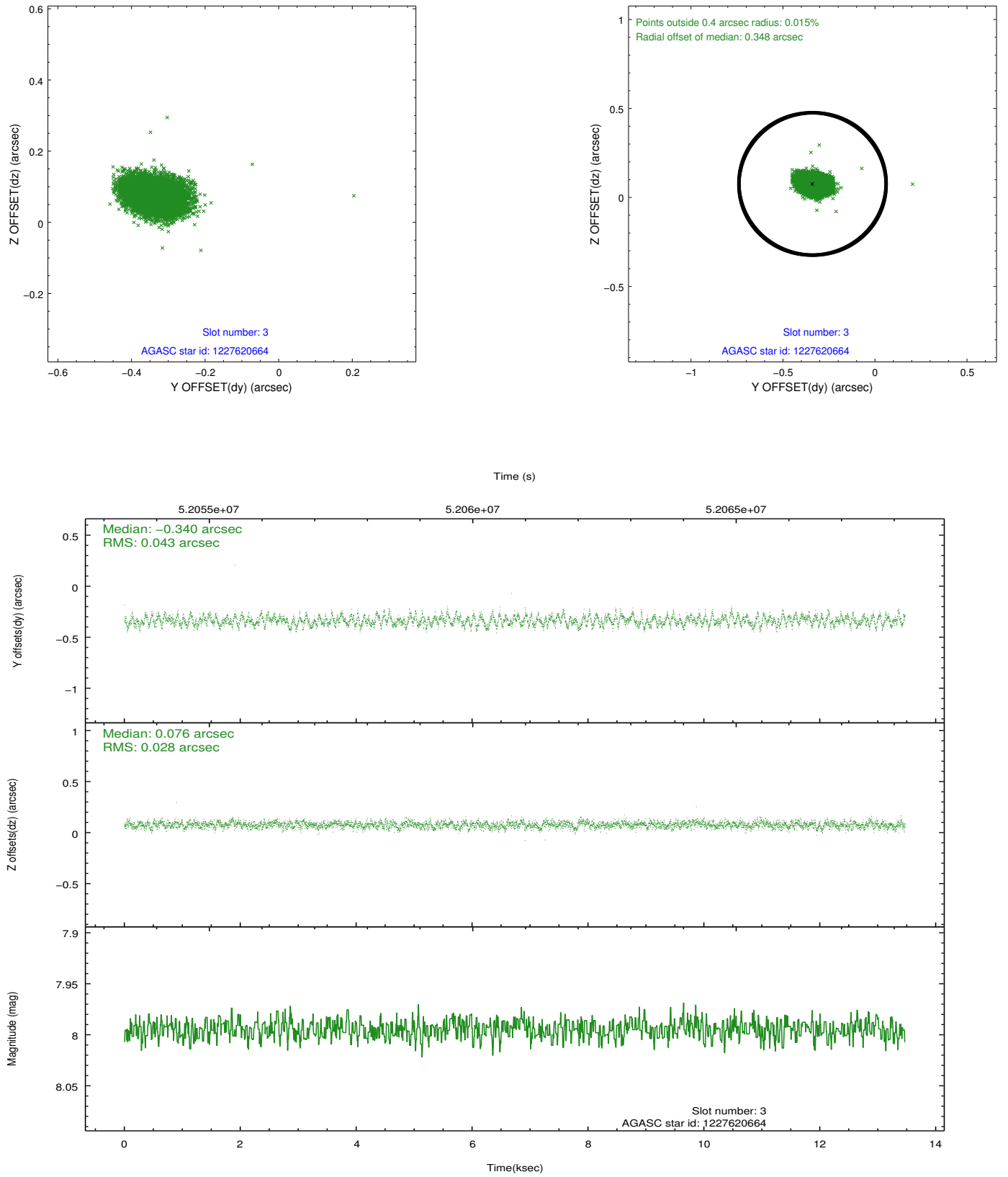


Slot Statistics

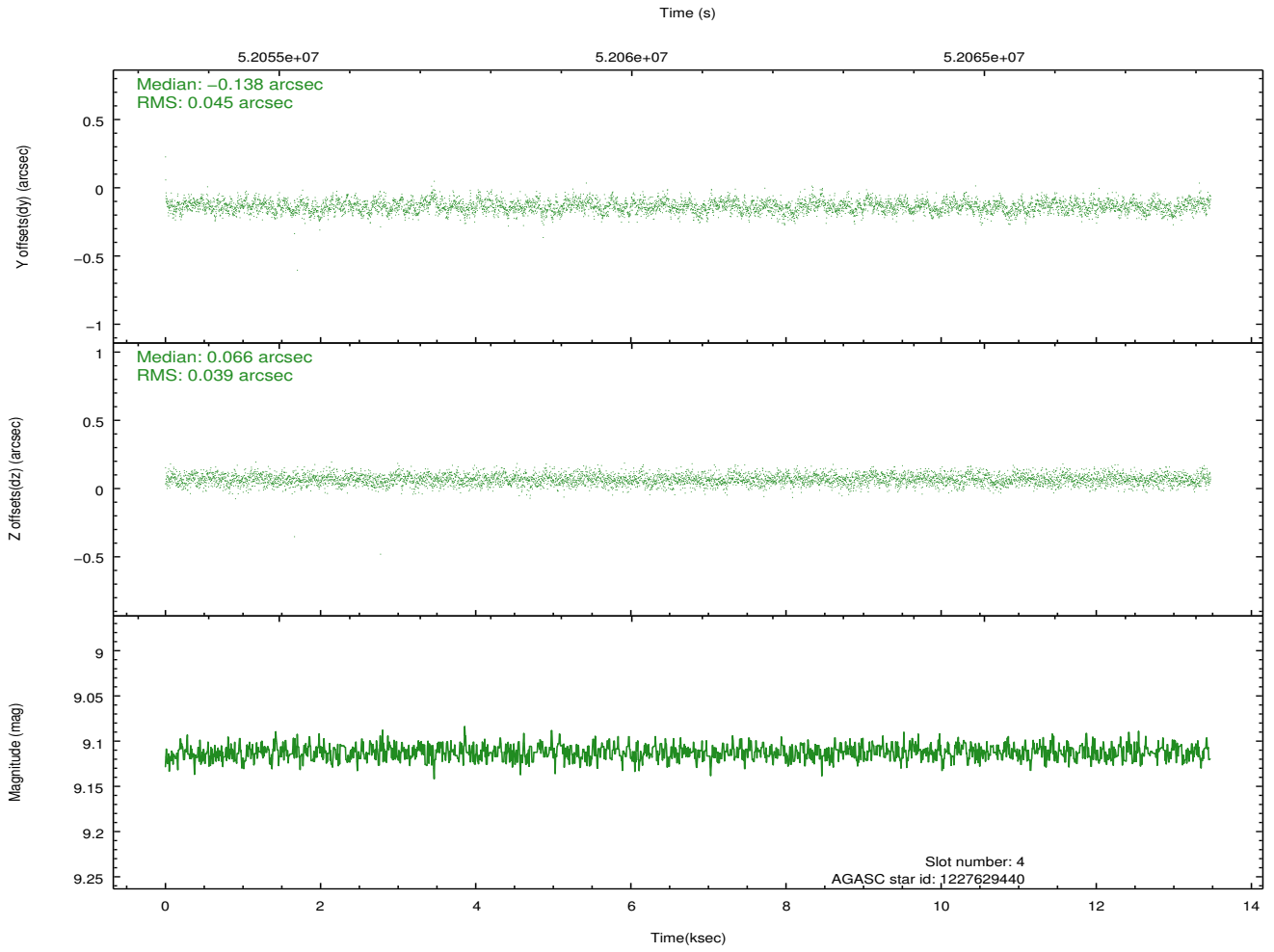
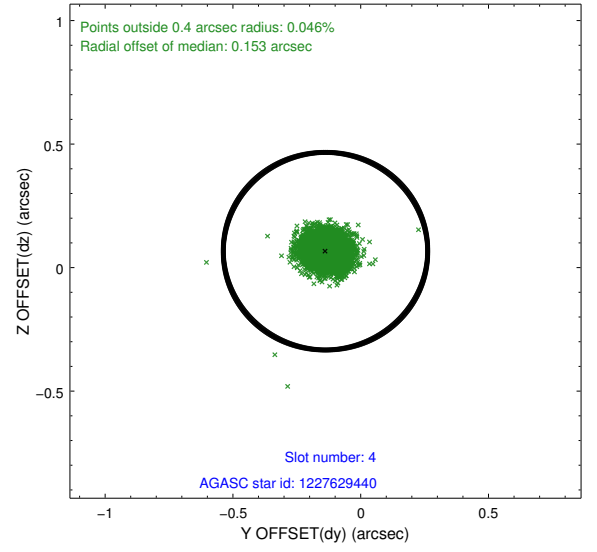
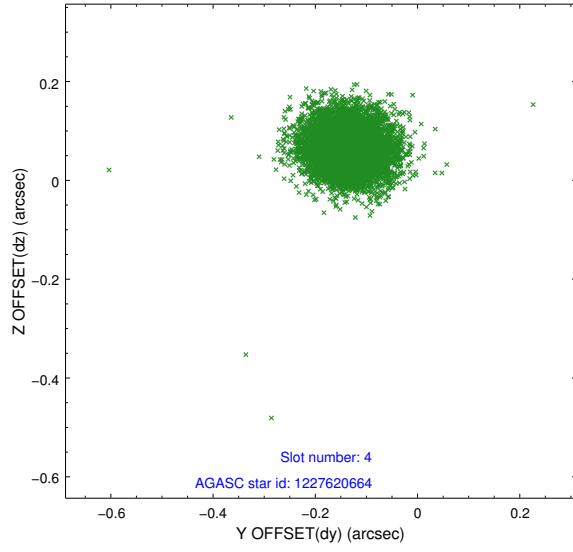
slot	status	id	mag	n_pts	med_dy	med_dz	dr1	dr2	ra	dec	mean_y	mean_z
0	FID	ACIS-I-2	7.20	6573	-0.040	0.054	0.009	0.015	0.000000	0.000000	-753.75	-829.50
1	FID	ACIS-I-4	7.24	6573	0.139	0.016	0.006	0.011	0.000000	0.000000	2160.54	1076.43
2	FID	ACIS-I-5	7.23	6573	-0.200	-0.001	0.008	0.013	0.000000	0.000000	-1807.51	1074.59
3	GUIDE	1227620664	7.99	6571	-0.340	0.076	0.054	0.088	46.150563	-77.166043	-1360.89	1206.32
4	GUIDE	1227629440	9.11	6570	-0.138	0.066	0.061	0.100	48.268116	-77.028500	-448.29	-313.24
5	GUIDE	1227104240	9.80	6566	-0.130	0.050	0.093	0.147	48.955462	-76.524572	1447.77	-443.58
6	GUIDE	1227097864	9.92	6567	0.980	-0.255	0.097	0.160	46.669937	-76.763312	150.48	1188.19
7	GUIDE	1227098648	9.64	6568	-0.368	0.066	0.091	0.147	45.933257	-76.269428	1694.18	2263.91

2.4 Star Slots

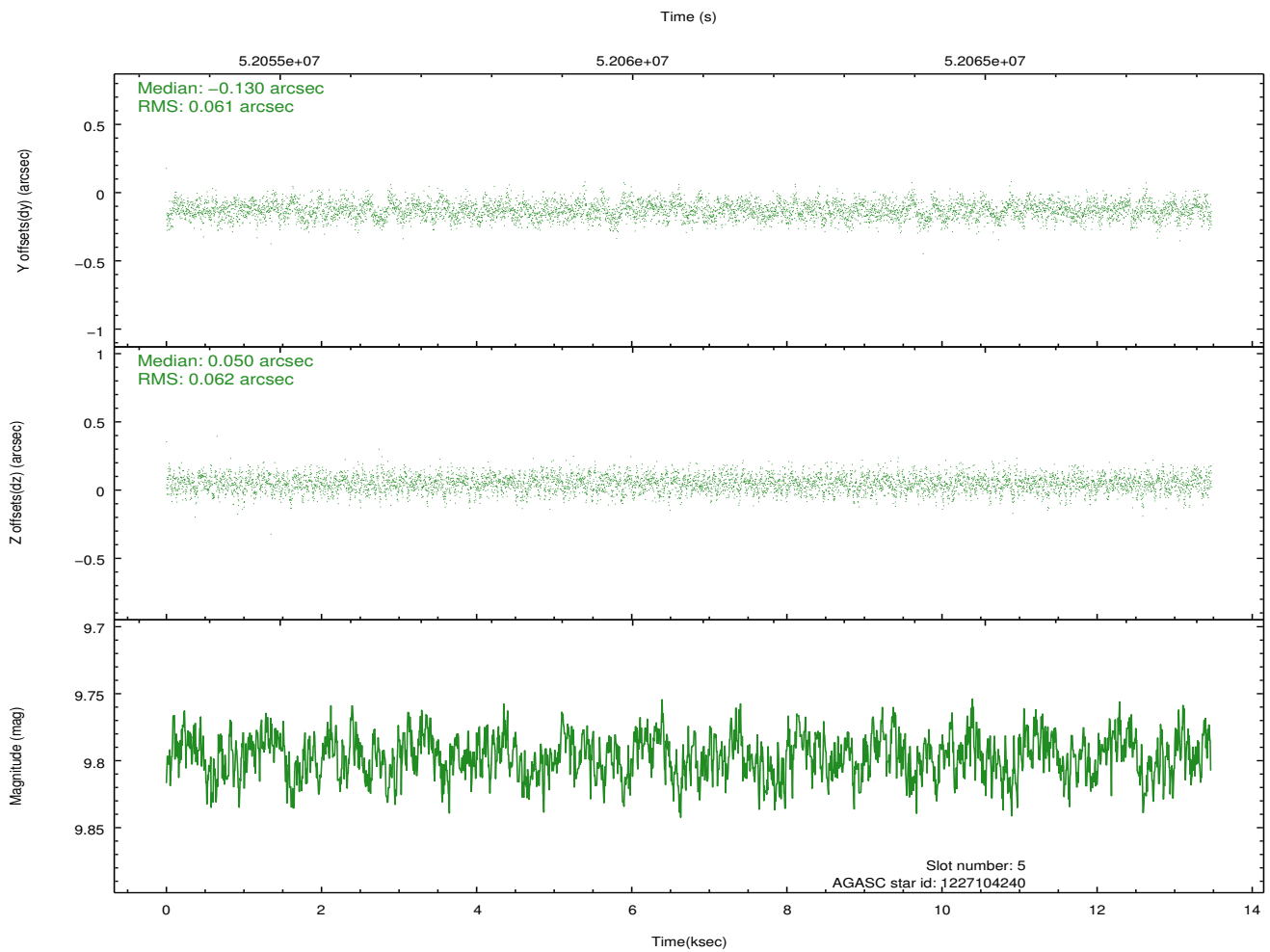
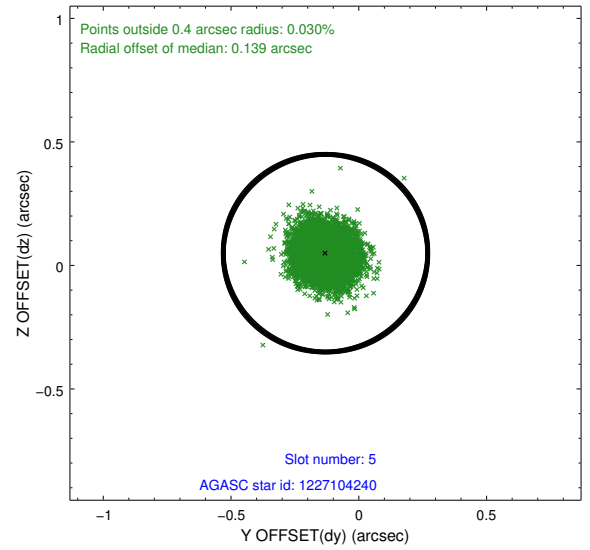
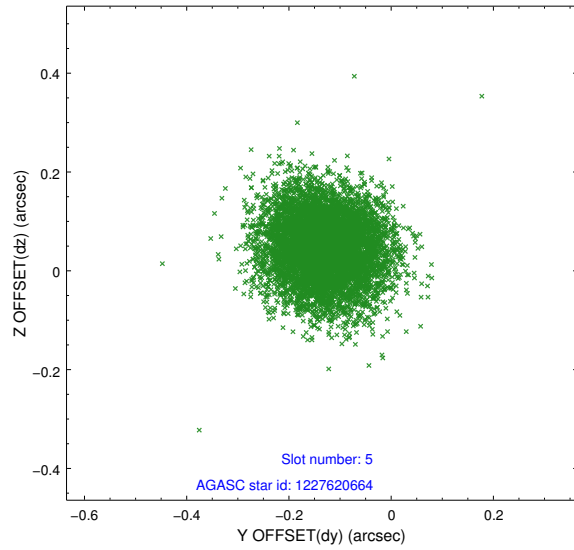
2.4.1 Slot 3



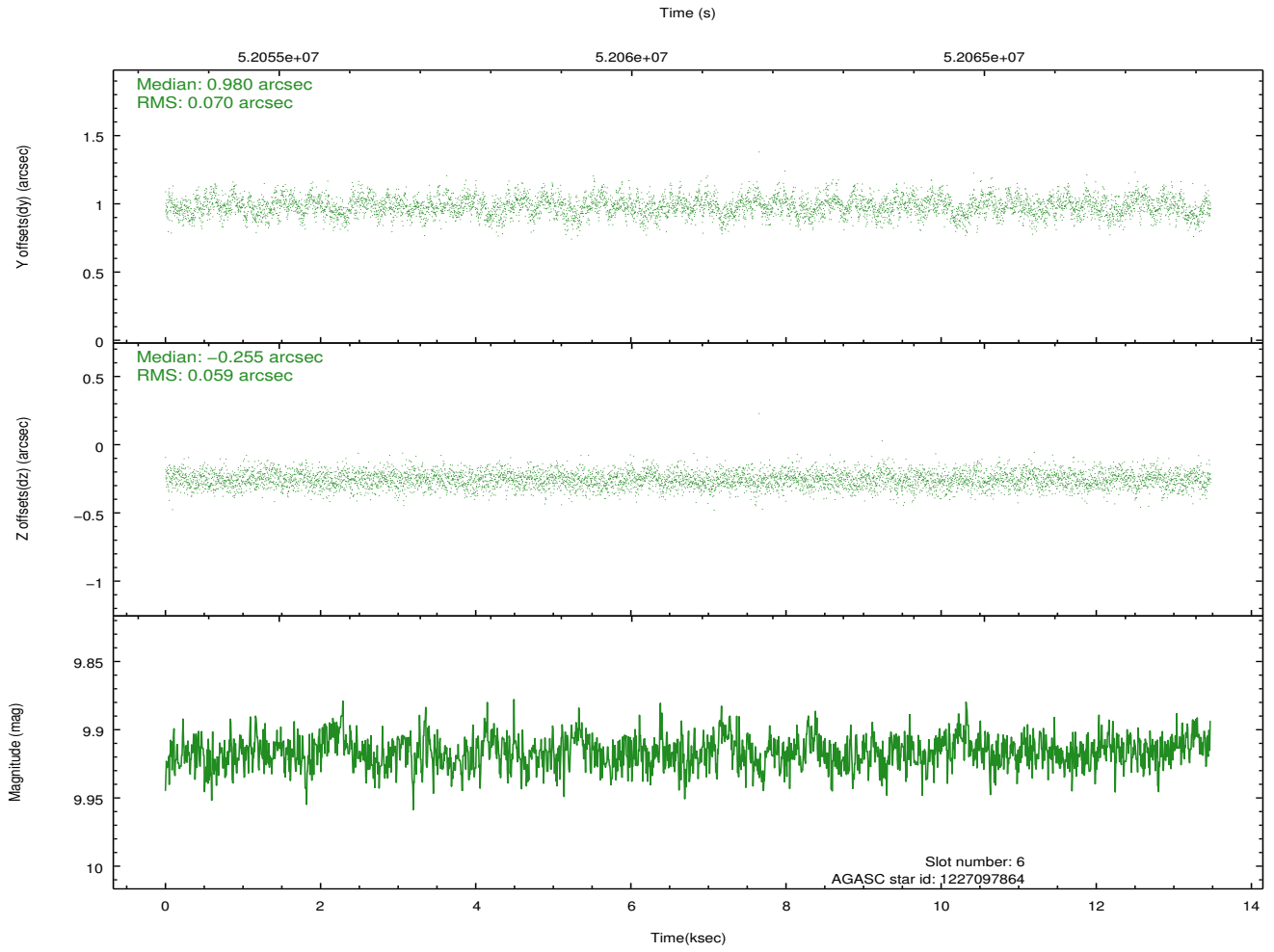
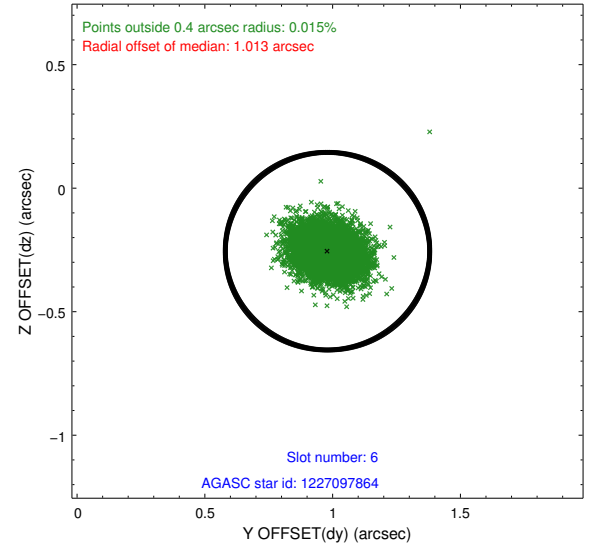
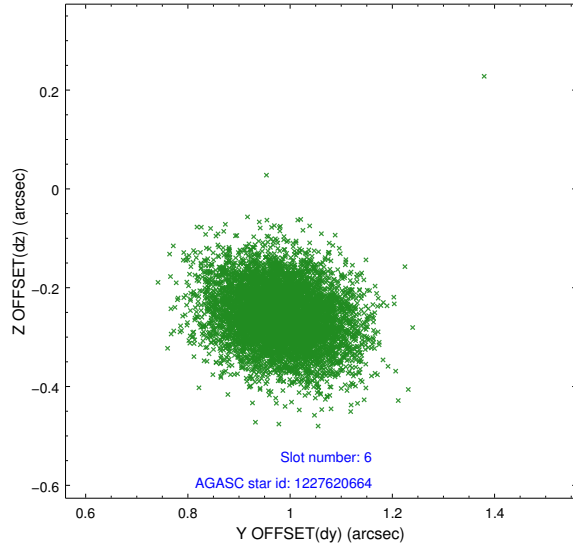
2.4.2 Slot 4



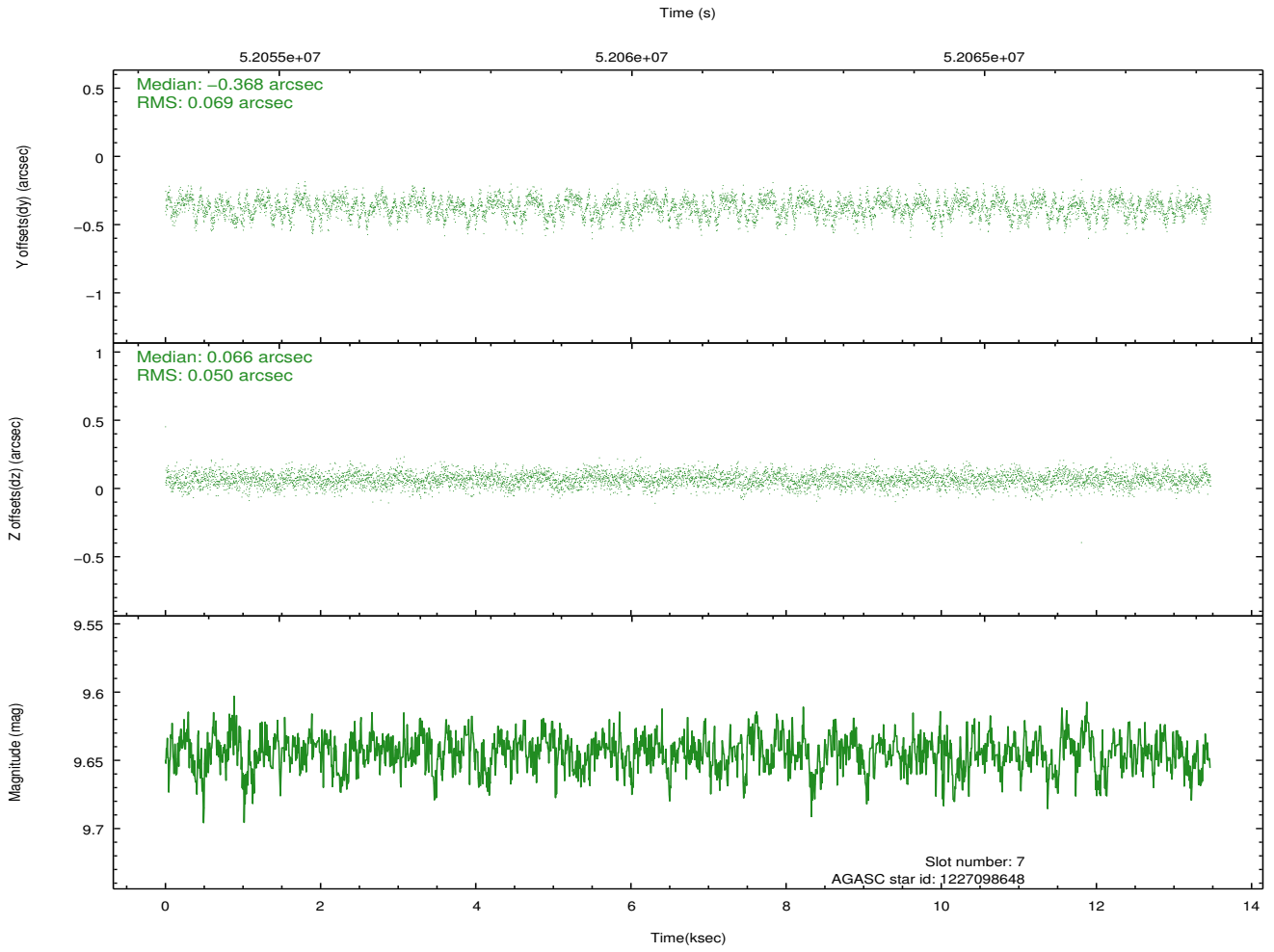
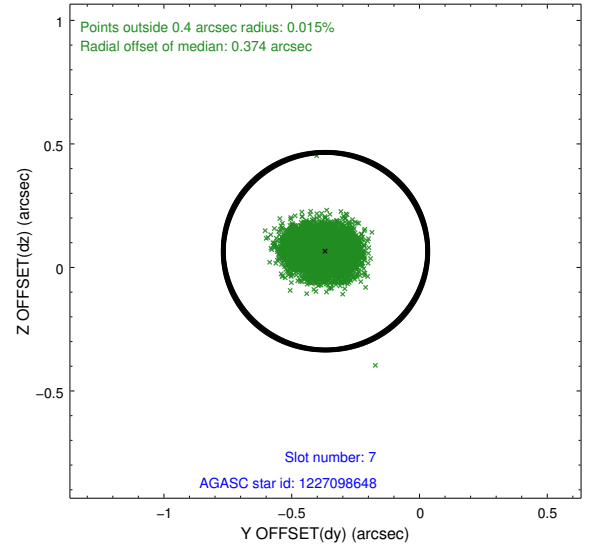
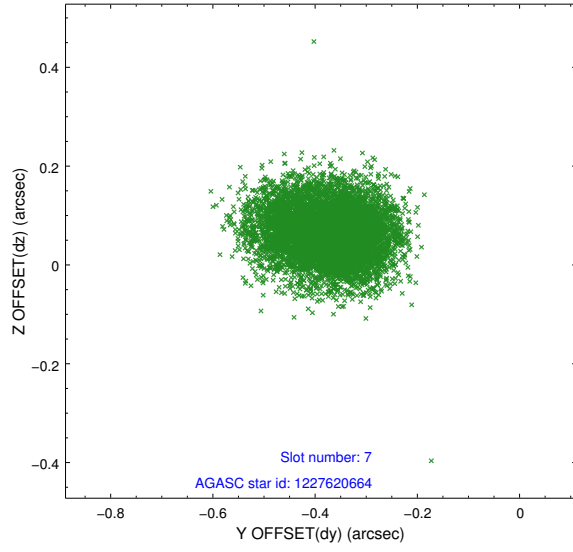
2.4.3 Slot 5



2.4.4 Slot 6

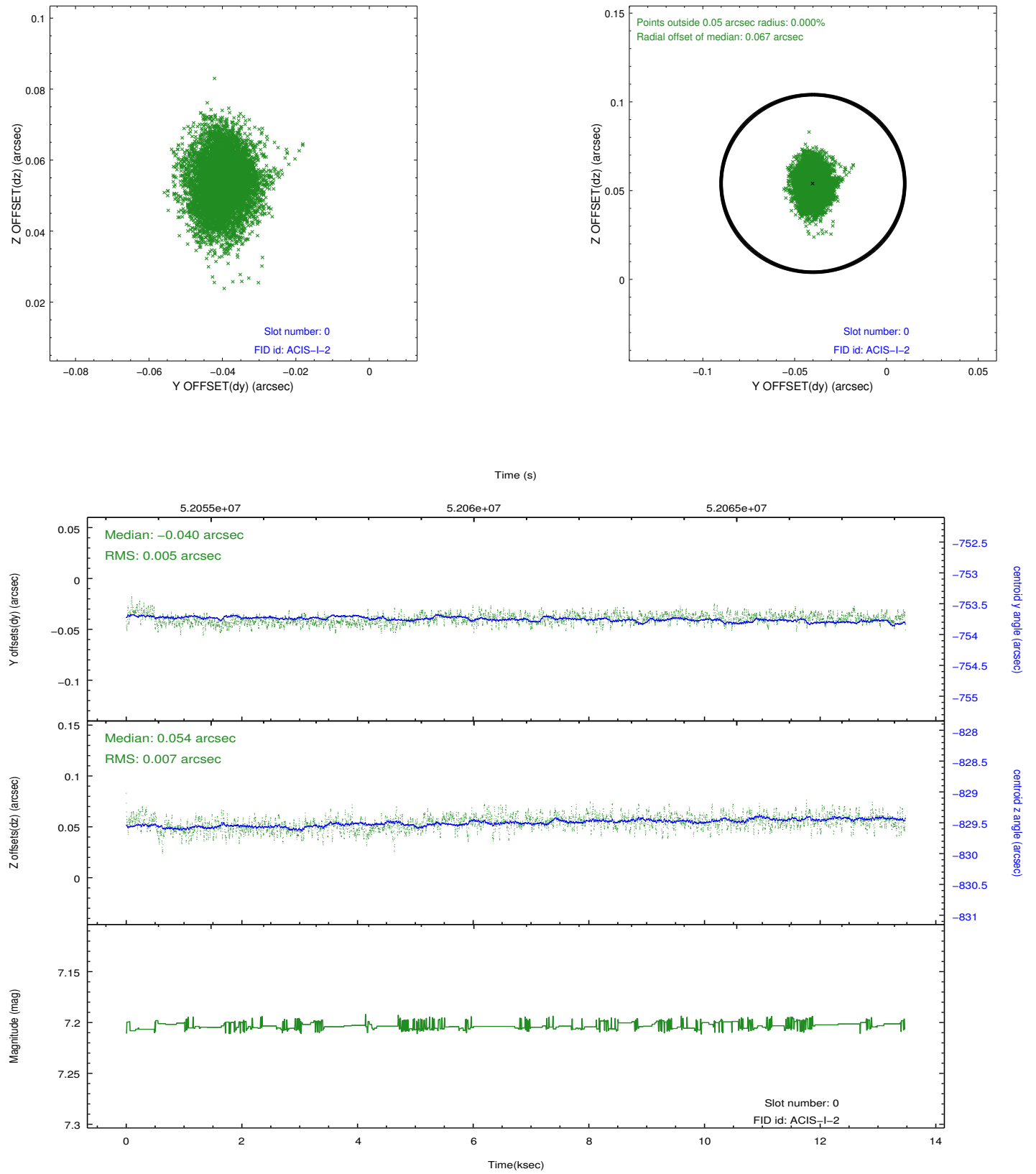


2.4.5 Slot 7

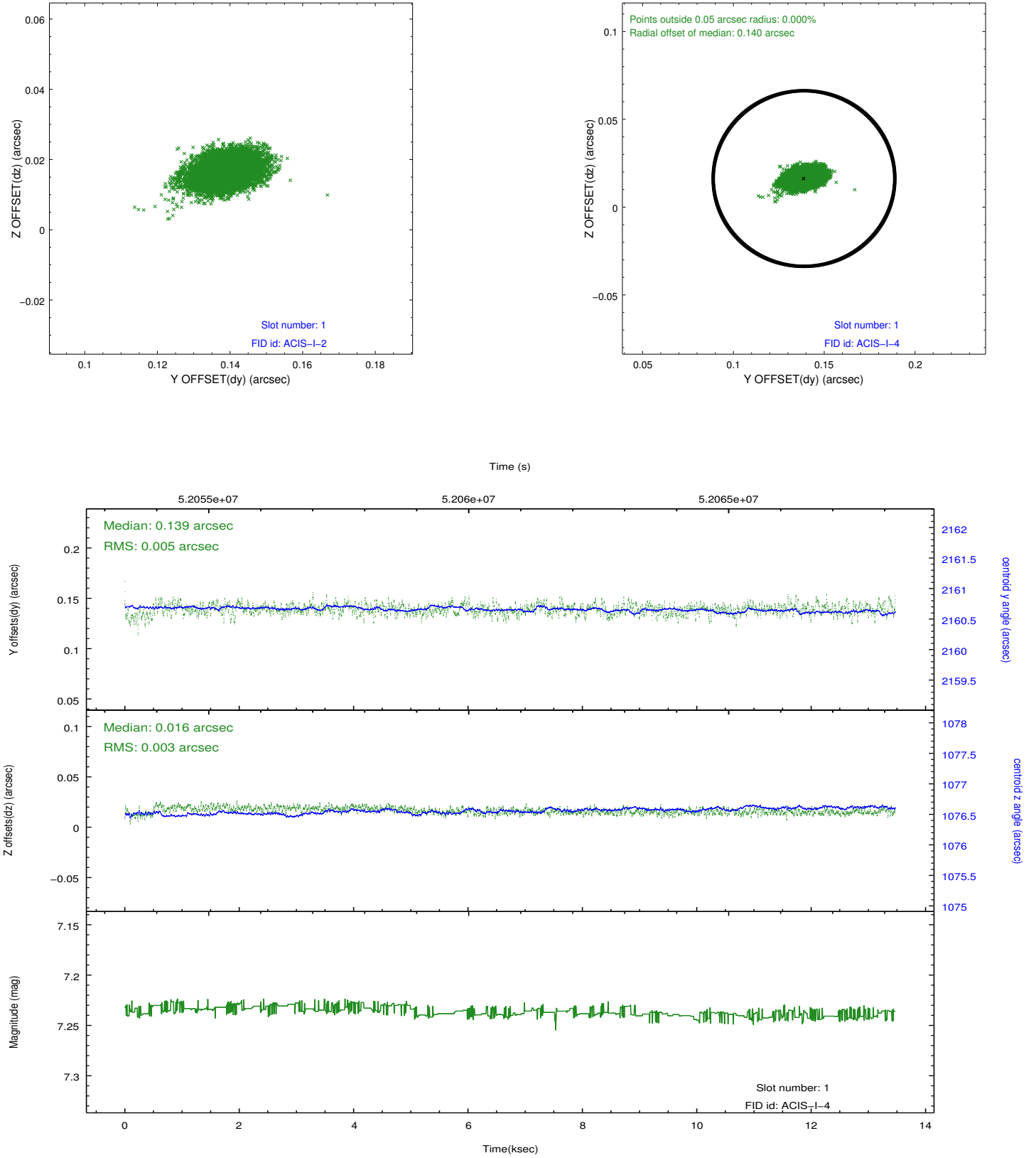


2.5 FID Slots

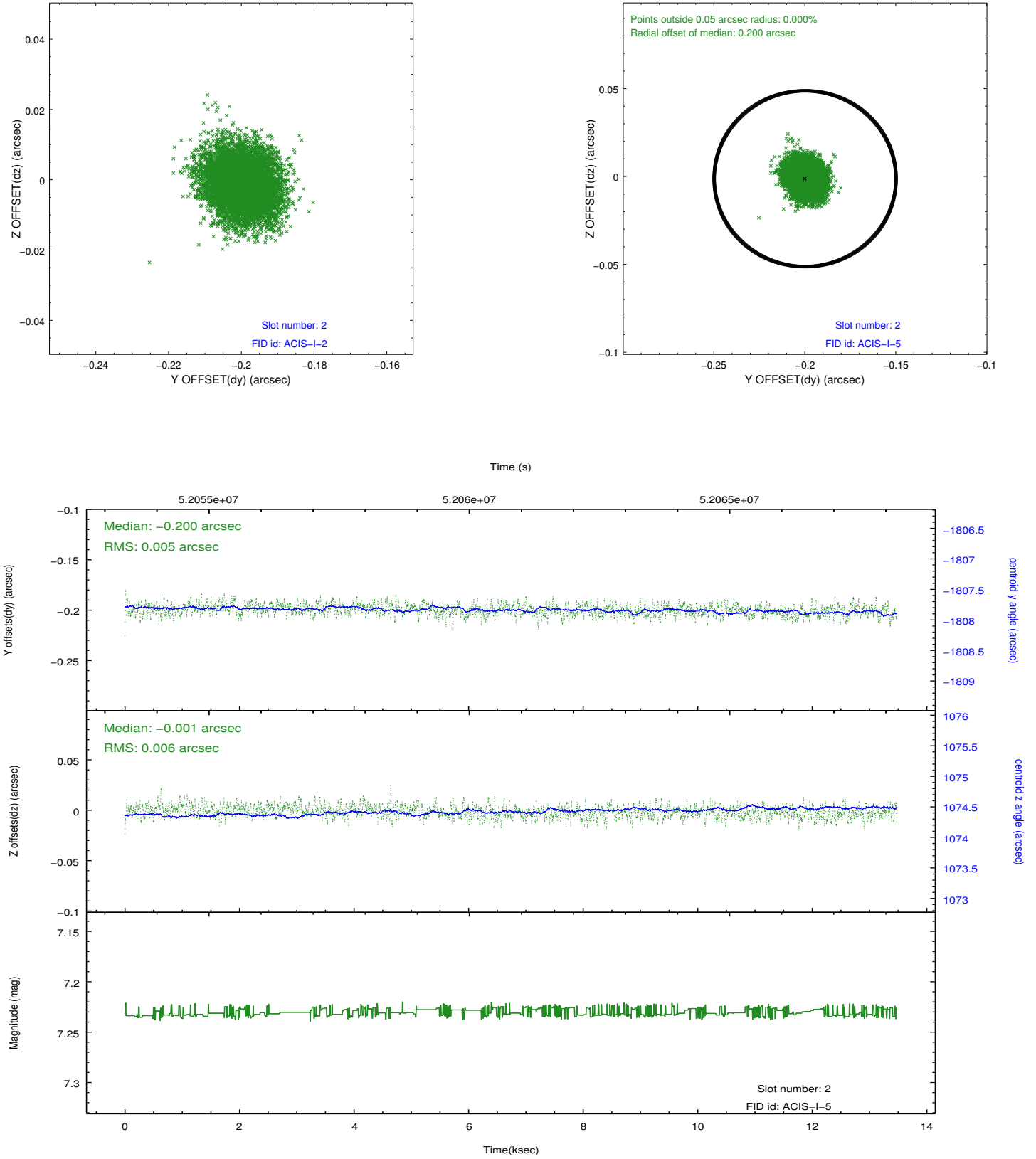
2.5.1 Slot 0



2.5.2 Slot 1



2.5.3 Slot 2



3 Point Sources

A Summary

A.1 Status

V&V Scientist	Joy Nichols
V&V Date (YYYY-MM-DD)	2010.05.14
V&V Edition	1
V&V Disposition and Status	OK
V&V Charge Time	12.896

A.2 Comments

On axis calibration observation on I3 using 128 subarray. In spite of the title of this observation, this is a good exposure of the target. It is not blank sky.

===

The focal plane temperature is approximately -100 C during this observation. This reprocessing of the data applies no CTI correction because none is available for this temperature at present.

The ACIS CTI correction has not been calibrated at this temperature, because it was early in the mission, and ACIS had not yet been lowered to the standard -119.7 C. Both front and back illuminated chips are affected. However a T_GAIN correction has been applied to the BI chips (ACIS-5 and ACIS-7) data included here.

The ACIS spectral response calibration is less accurate at these warmer temperatures than it is at -119.7 C. Users whose science objectives depend on the most accurate spectral response (ie: fitting line-rich spectra) may notice an effect. Users whose science objectives do not depend on the most accurate spectral response should not notice an effect.