

# V&V Reference Report

## L2 ASCDS Version : 7.6.7.2

Observation 4669 - L2 Version 3  
Chandra X-Ray Center

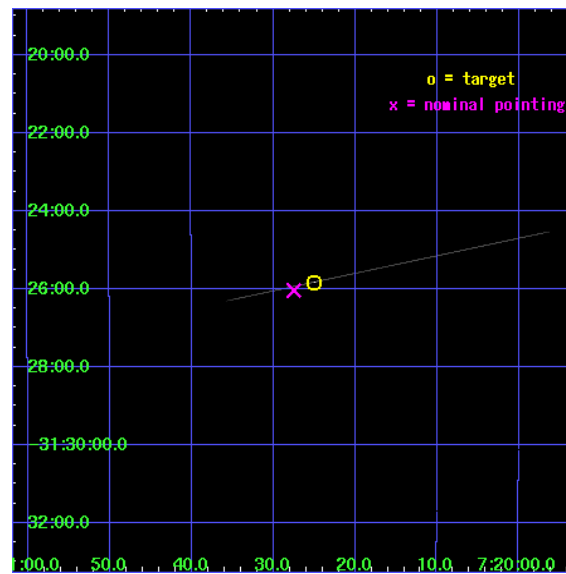
L2 Processing Date : Apr 11 2008

## Contents

<b>1</b>	<b>Front</b>	<b>2</b>
<b>2</b>	<b>OBI</b>	<b>3</b>
2.1	OBI . . . . .	3
2.1.1	Images . . . . .	3
2.1.2	Bias . . . . .	3
2.1.3	Parameters . . . . .	4
2.1.4	Events . . . . .	4
2.2	Compared Parameters . . . . .	5
2.3	Aspect . . . . .	6
2.4	Star Slots . . . . .	9
2.4.1	Slot 3 . . . . .	9
2.4.2	Slot 4 . . . . .	10
2.4.3	Slot 5 . . . . .	11
2.4.4	Slot 6 . . . . .	12
2.4.5	Slot 7 . . . . .	13
2.5	FID Slots . . . . .	14
2.5.1	Slot 0 . . . . .	14
2.5.2	Slot 1 . . . . .	15
2.5.3	Slot 2 . . . . .	16
<b>A</b>	<b>Summary</b>	<b>17</b>
A.1	Status . . . . .	17
A.2	Comments . . . . .	17

# 1 Front

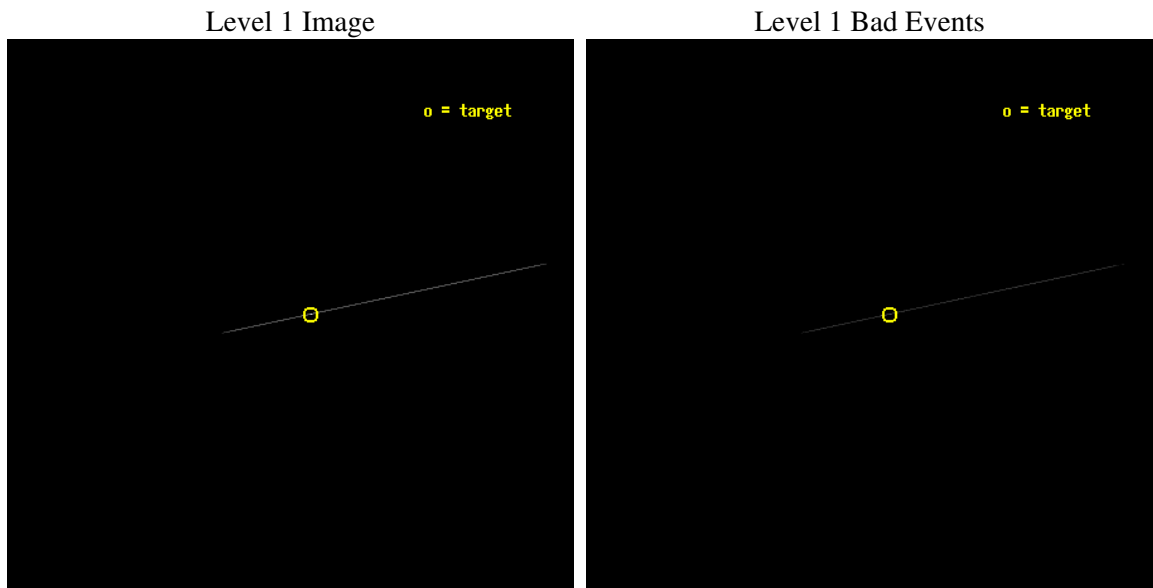
seq_num	500488
obs_id	4669
title	Timing the Enigmatic Nearby Neutron Star RX J0720.4-3125
observer	Dr David Kaplan
object	RX J0720.4-3125
ra_targ	110.104167
dec_targ	-31.430444
ra_nom	110.11454295292
dec_nom	-31.434101226235
roll_nom	348.04503906863
revision	3
ontime	5213.1600748003
livetime	5192.7961682581
ontime7	5213.1600748003
l2events	27729



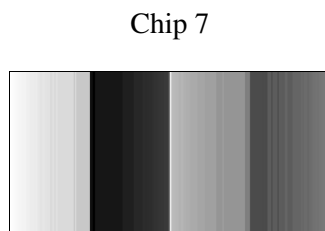
## 2 OBI

### 2.1 OBI

#### 2.1.1 Images



#### 2.1.2 Bias



### 2.1.3 Parameters

obi_num	0
ascdsver	7.6.11.6
caldbver	3.4.4
date	2008-04-11T14:54:27
revision	3

sched_exp_time	5000.000000
ontime	5213.1600748003
ontime7	5213.1600748003
l1events	36058

### 2.1.4 Events

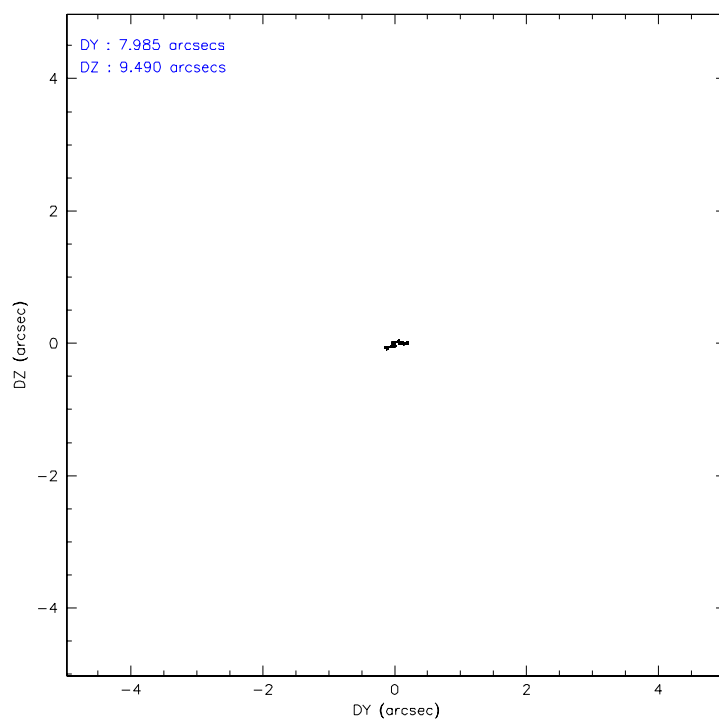
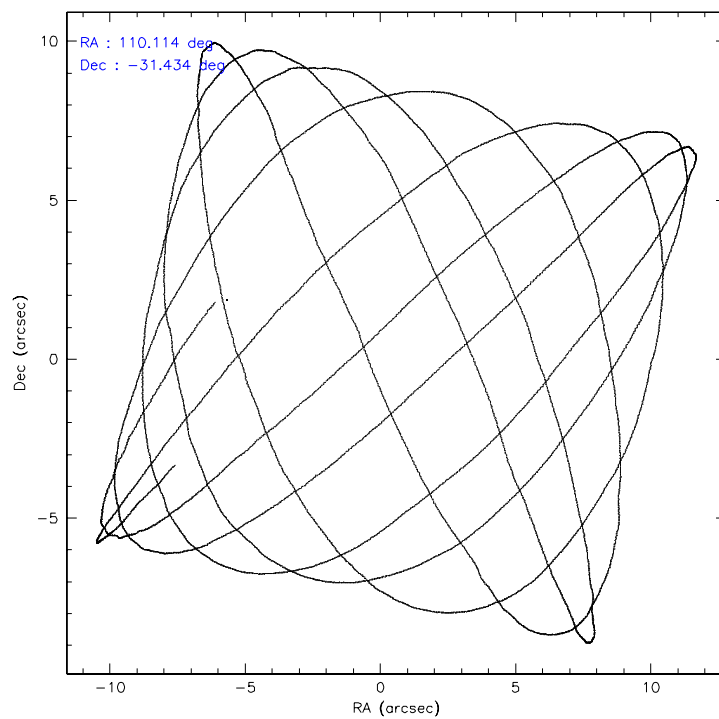
	<b>ccd 7</b>
level 1 events	36058
rejected events	7516
rejected %	20%

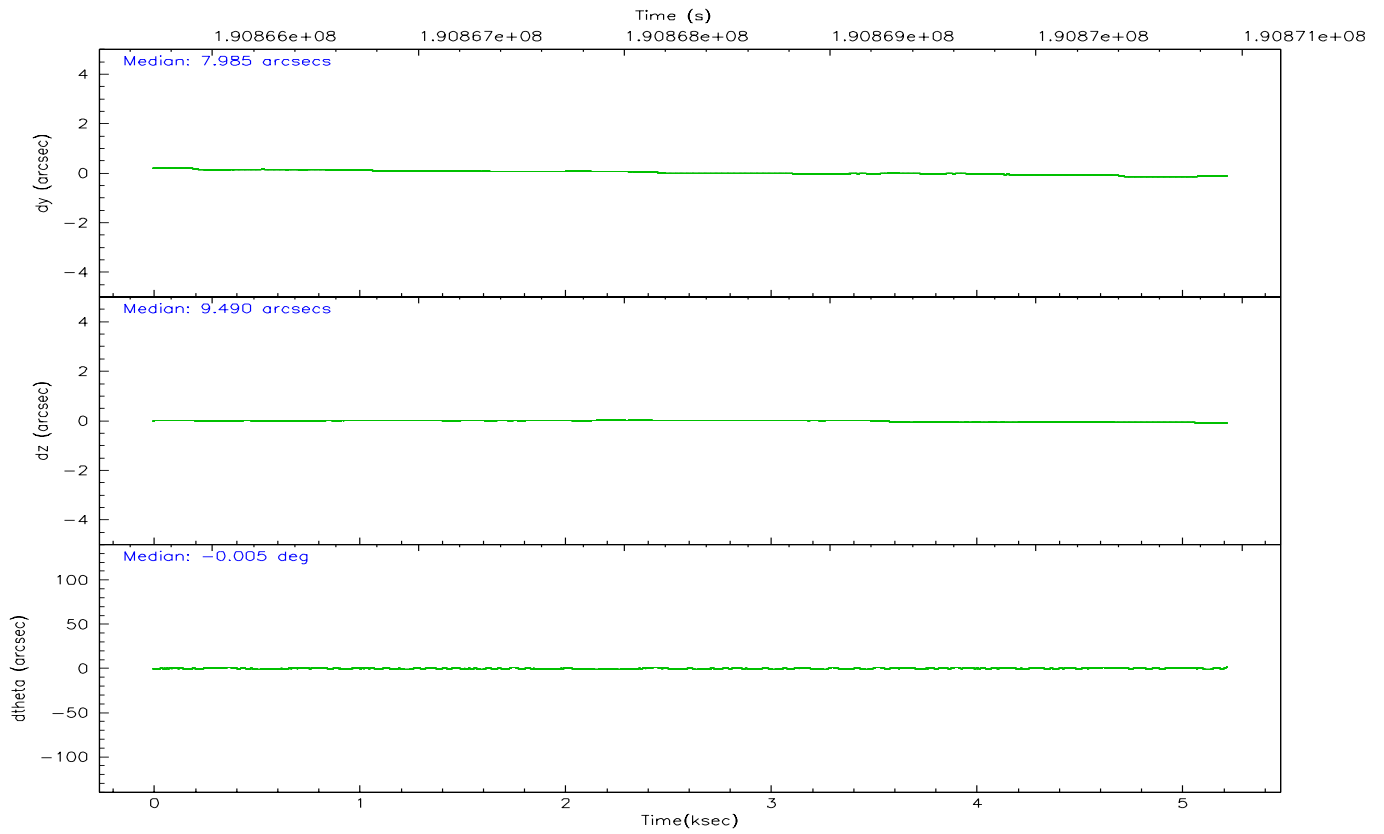
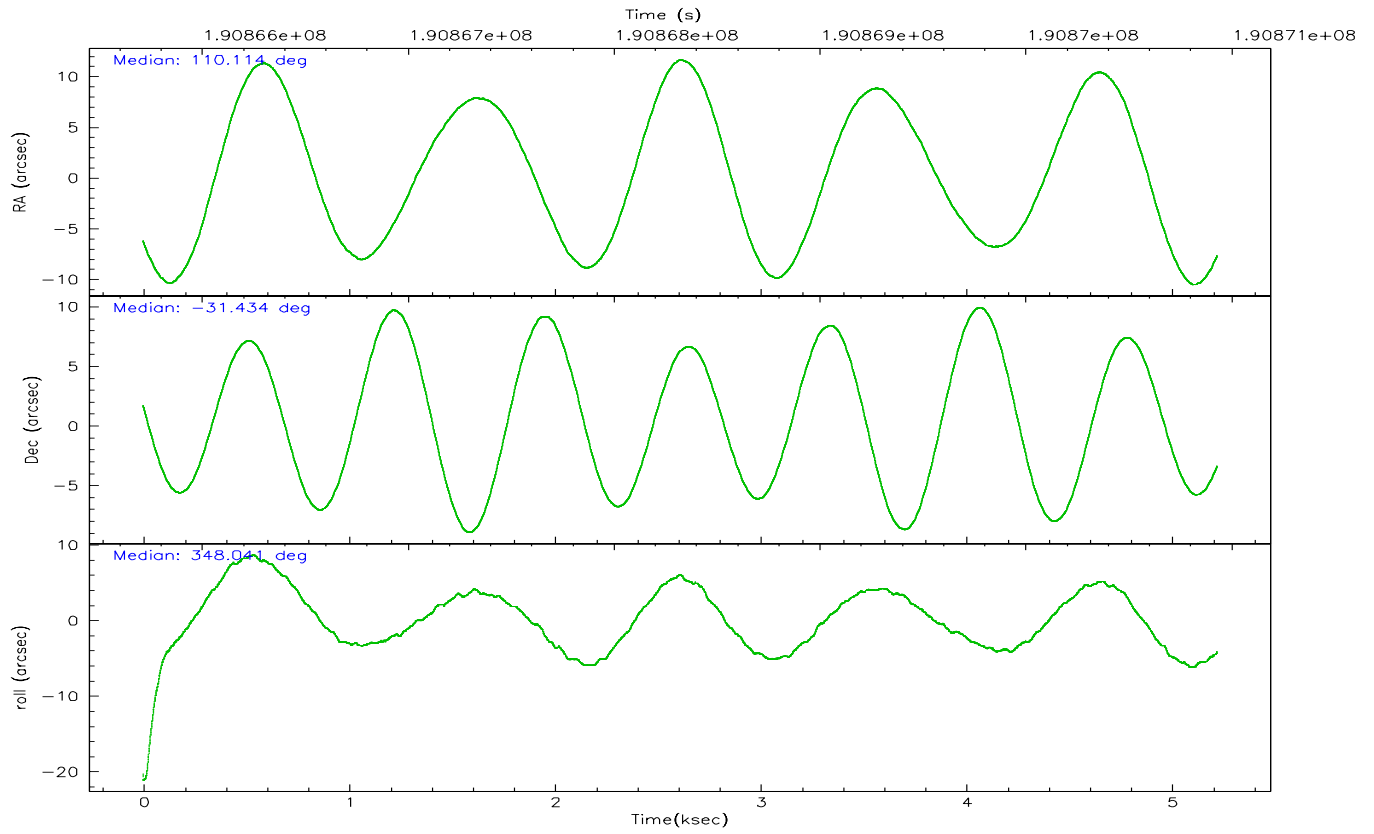
	<b>ccd 7</b>
grade 0 events	8244
	22%
grade 1 events	74
	0%
grade 2 events	7097
	19%
grade 3 events	2366
	6%
grade 4 events	2455
	6%
grade 5 events	4506
	12%
grade 6 events	11316
	31%
grade 7 events	0
	0%

## 2.2 Compared Parameters

Parameter	Planned	Actual	Parameter	Planned	Actual
Instrument	ACIS	ACIS	Obspar format version number	6	6
Detector	ACIS-7	ACIS-7	Obspar file type	PREDICTED	ACTUAL
Grating	NONE	NONE	Obspar update status	NONE	UPDATED
Data mode	CC33_FAINT	CC33_FAINT	On-chip summing requested	N	N
Observation mode	POINTING	POINTING	Subarray requested	NONE	NONE
Pointing RA	110.084456	110.1145429529246	Alternating exposures requested	N	N
Pointing Dec	-31.442857	-31.43410122623527	Primary exposure time	0.000000	0
Pointing Roll	347.872715	348.0450390686253			
SIM focus pos (mm)	-0.684267	-0.6828225247311905			
SIM defocus (mm)	0	0.001444936568705701			
SIM translation stage pos (mm)	-190.132523	-190.1425803651734			
SIM translation stage offset (mm)	0	0.01005778216563158			
Observation start time	190865929.184000	190864949.716			
Observation start date	2004-01-19T02:17:45	2004-01-19T02:02:29			
Observation end time	190870929.184000	190871996.59131			
Observation end date	2004-01-19T03:41:05	2004-01-19T03:59:56			
Read mode	CONTINUOUS	CONTINUOUS			

## 2.3 Aspect





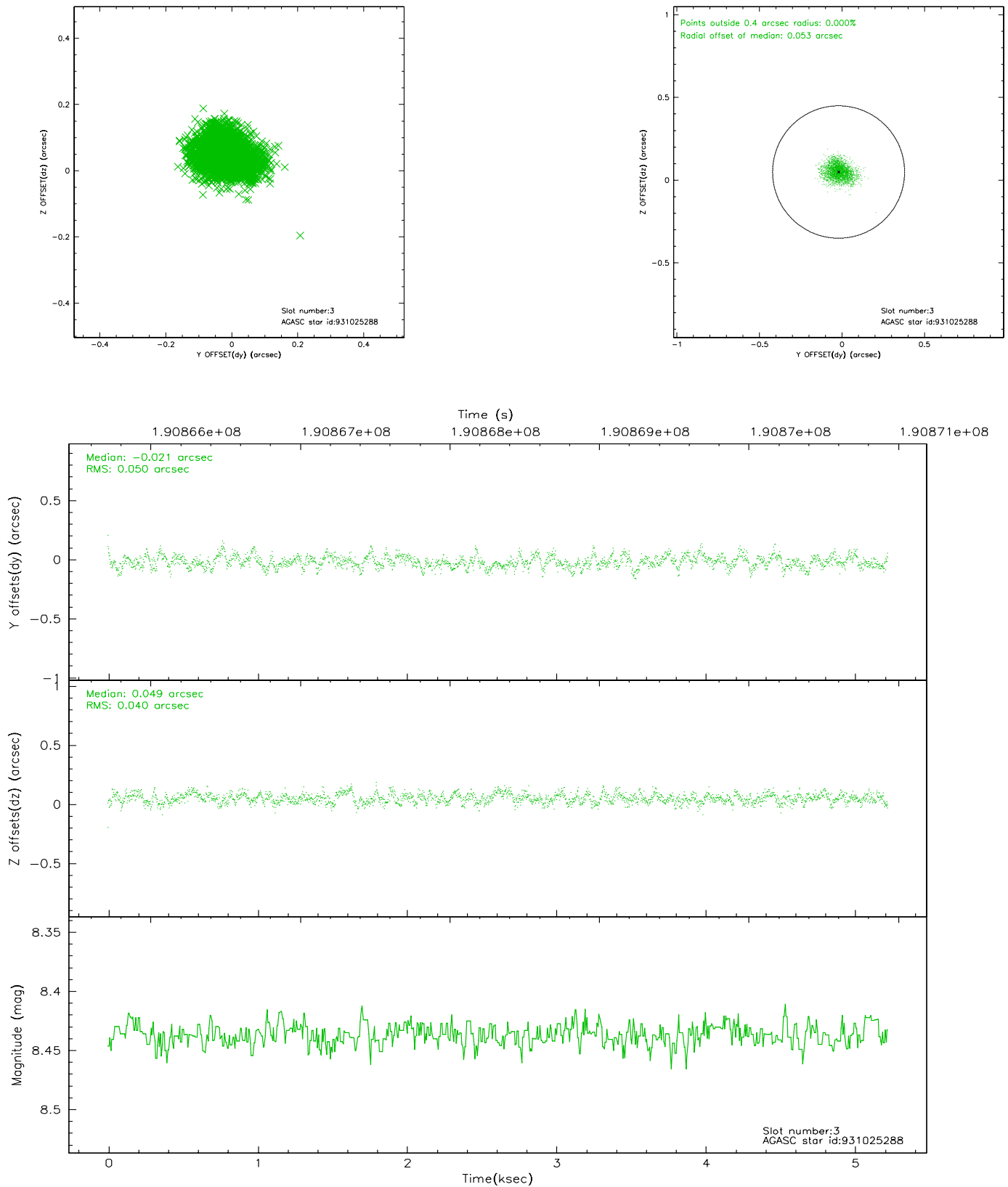
### Slot Statistics

slot	status	id	mag	n_pts	med_dy	med_dz	dr1	dr2	ra	dec	mean_y	mean_z
0	FID	ACIS-S-1	7.19	1270	0.019	0.006	0.007	0.012	0.000000	0.000000	935.26	-1726.28
1	FID	ACIS-S-4	7.20	1269	0.042	-0.009	0.007	0.011	0.000000	0.000000	2153.34	176.66
2	FID	ACIS-S-5	7.23	1272	-0.088	0.016	0.007	0.012	0.000000	0.000000	-1812.23	171.60
3	GUIDE	931025288	8.44	2542	-0.021	0.049	0.068	0.110	109.511084	-30.937793	-2111.67	1401.45
4	GUIDE	931163512	8.46	2542	0.050	0.022	0.067	0.107	110.894384	-31.299941	2329.24	1018.55
5	GUIDE	931695048	7.40	2542	0.070	-0.032	0.078	0.130	110.648539	-32.046020	2141.63	-1764.88
6	GUIDE	931019296	8.66	2543	-0.037	0.035	0.062	0.097	109.471771	-31.694370	-1642.23	-1285.40
7	GUIDE	931160352	8.64	2543	-0.065	-0.077	0.076	0.122	110.268138	-30.864891	117.45	2152.85

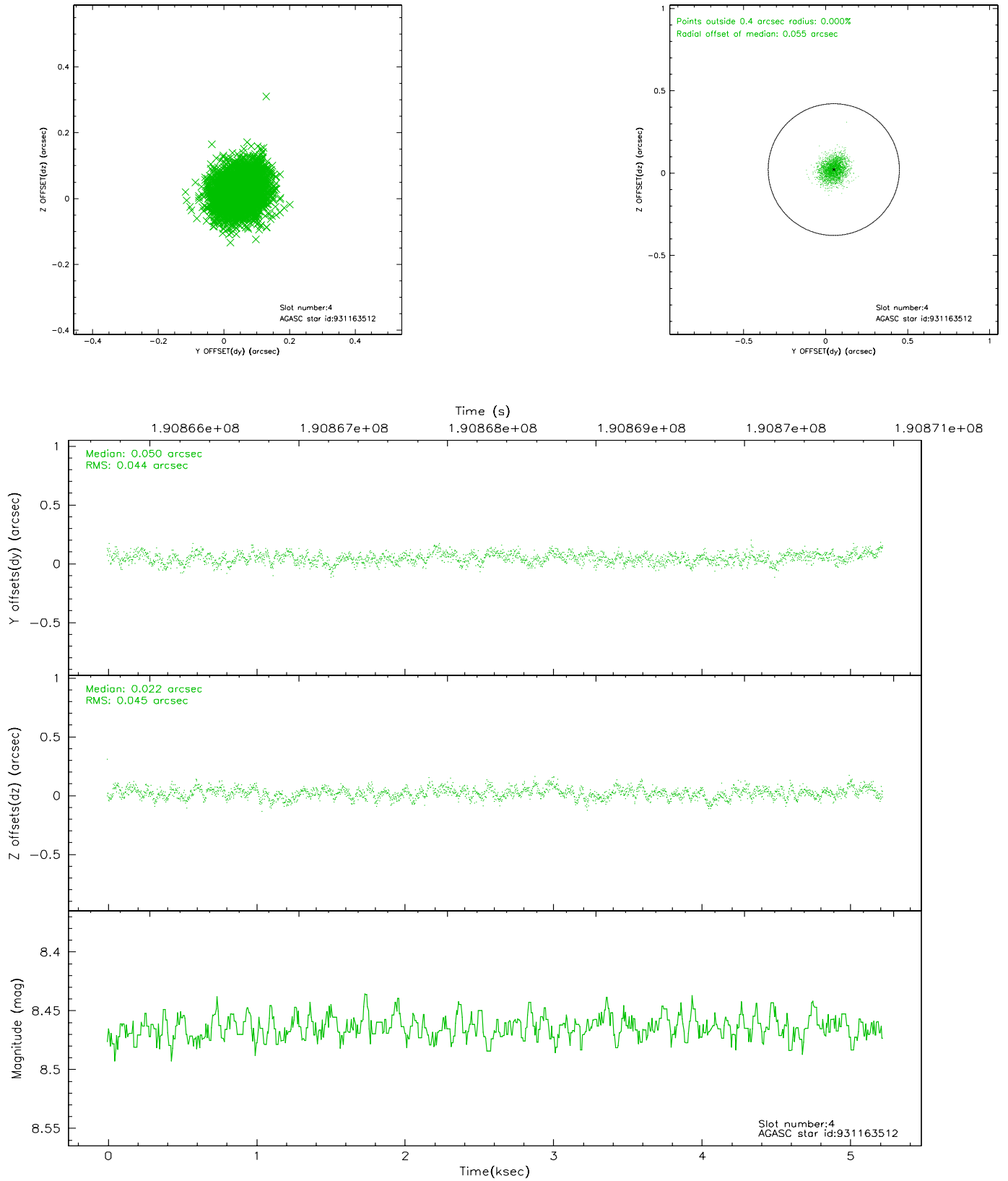


## 2.4 Star Slots

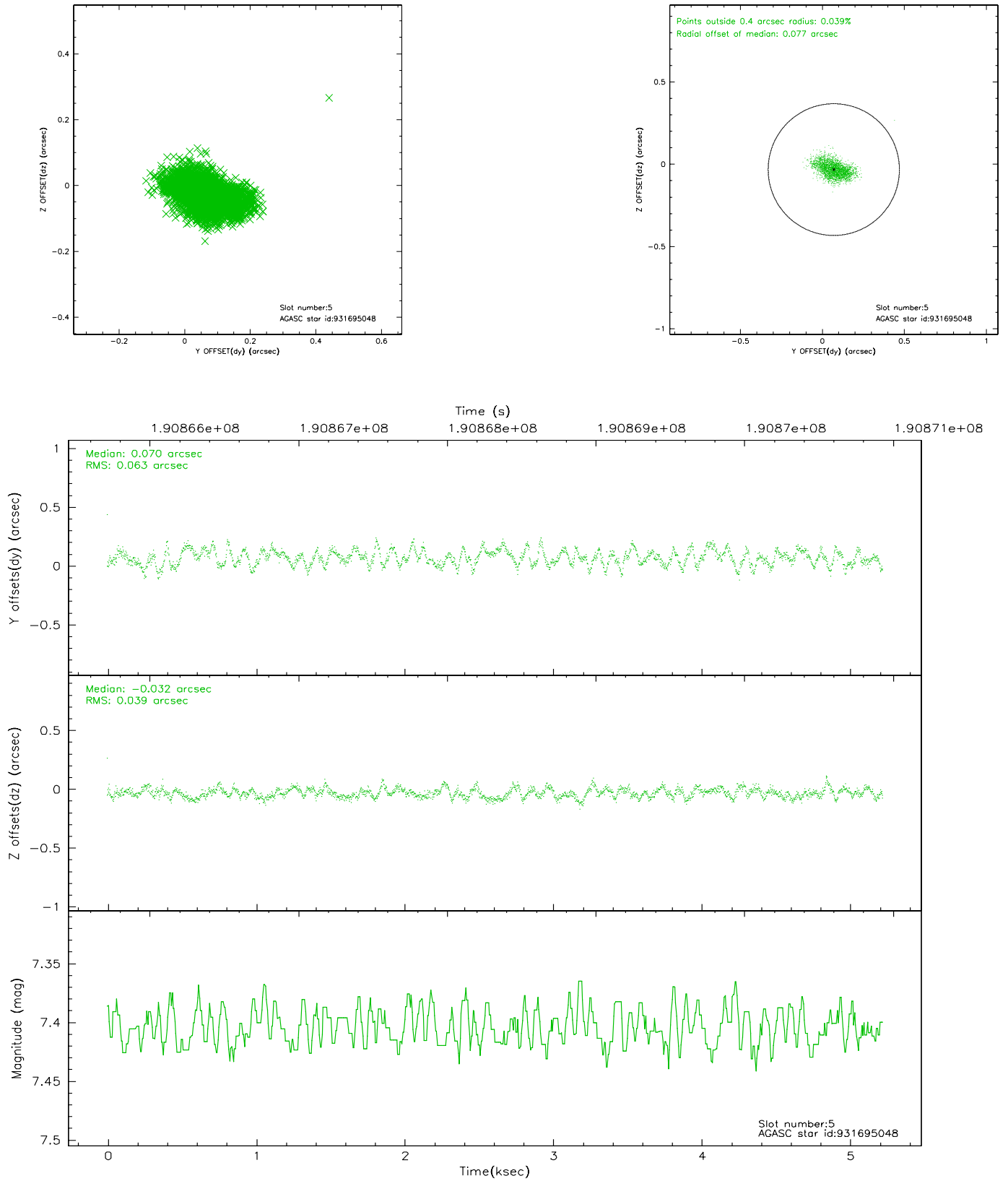
### 2.4.1 Slot 3



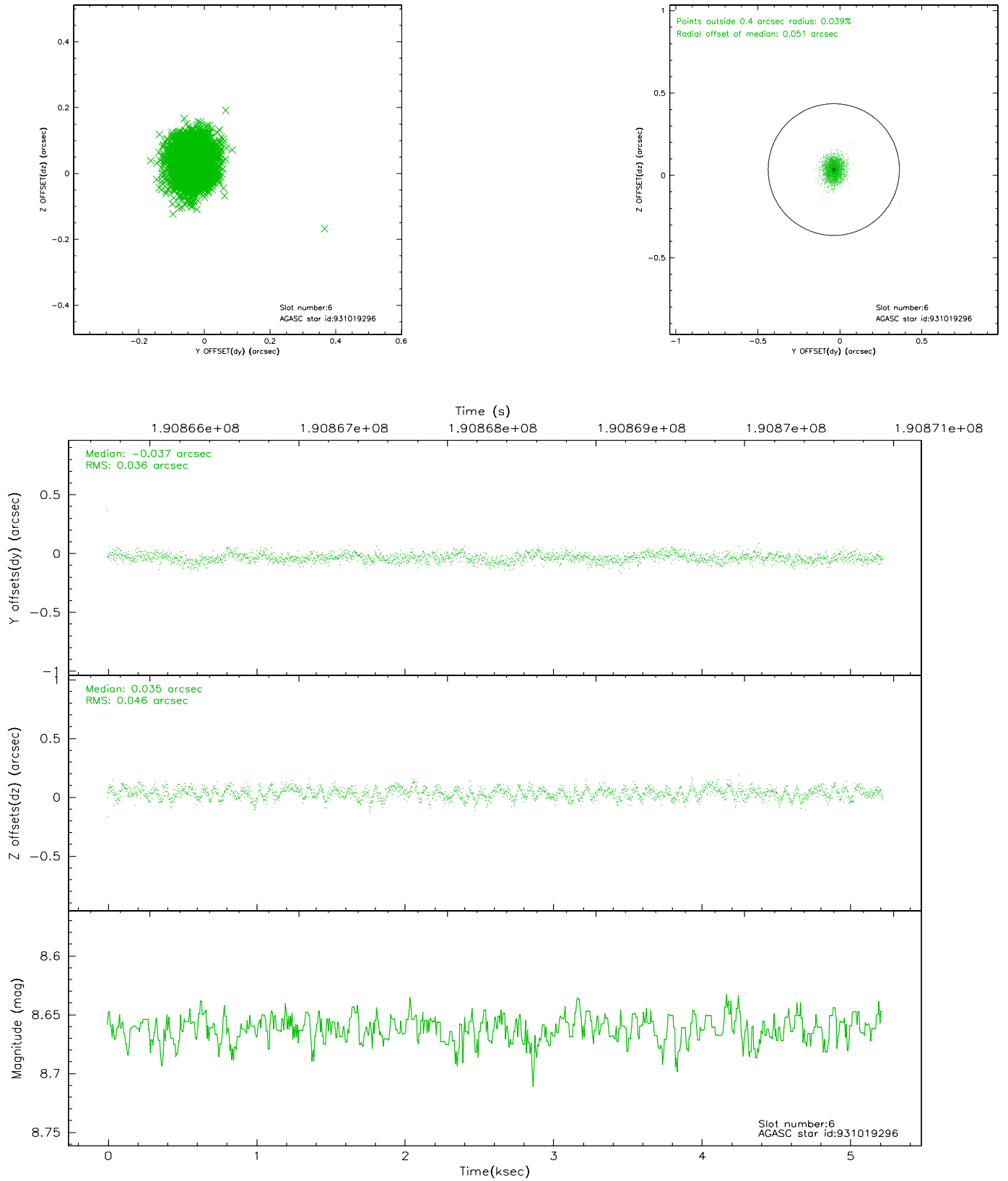
## 2.4.2 Slot 4



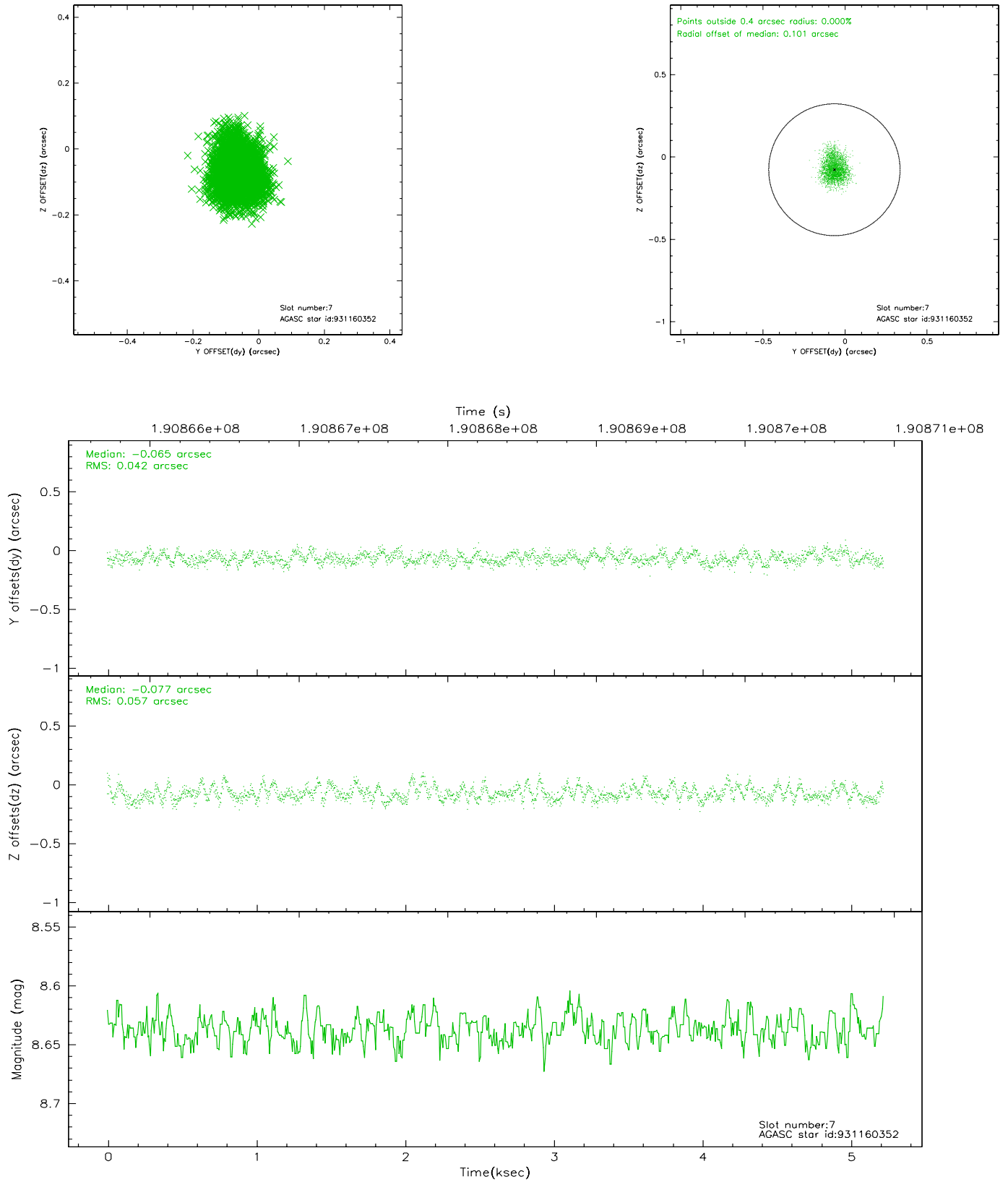
### 2.4.3 Slot 5



## 2.4.4 Slot 6

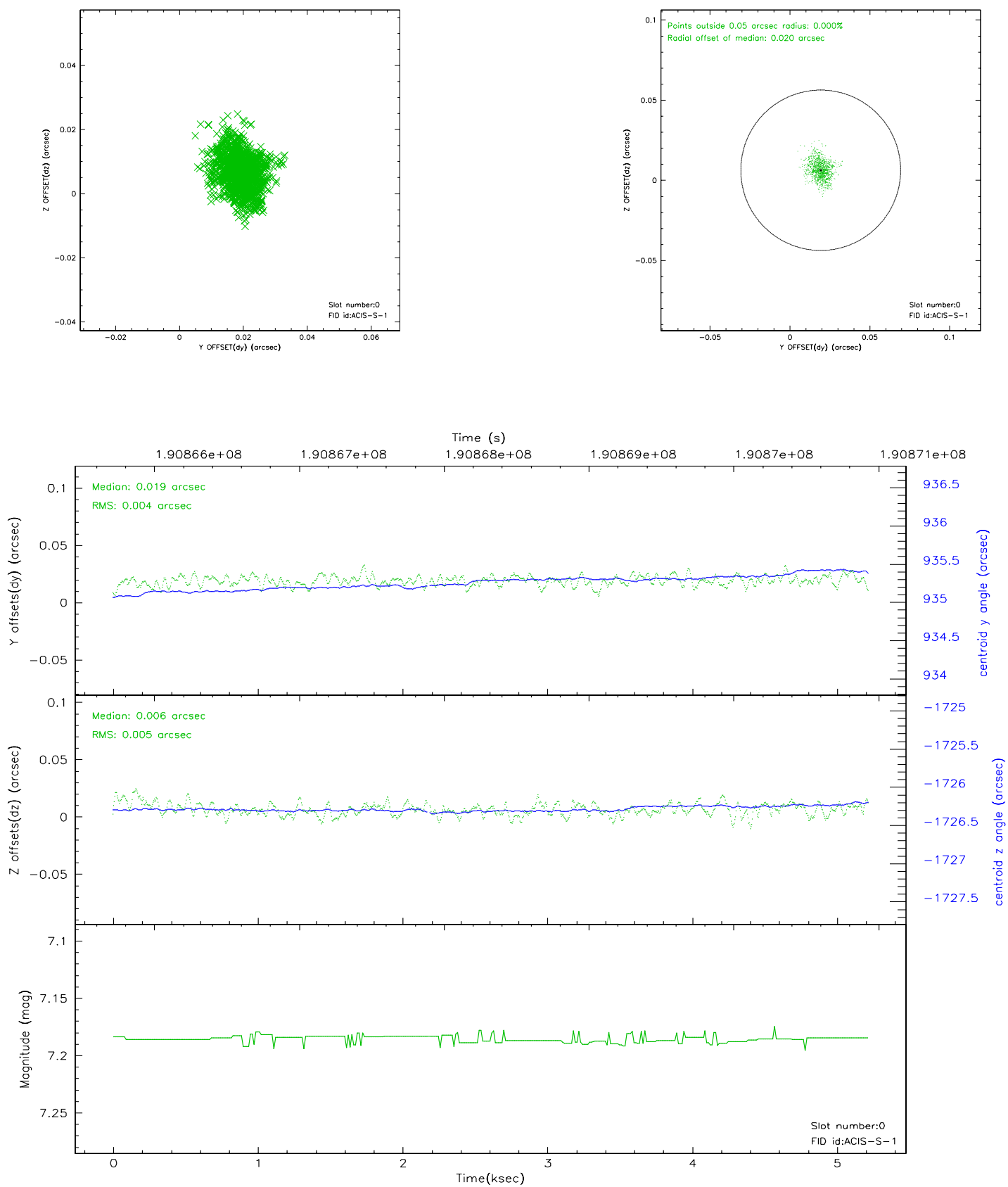


## 2.4.5 Slot 7

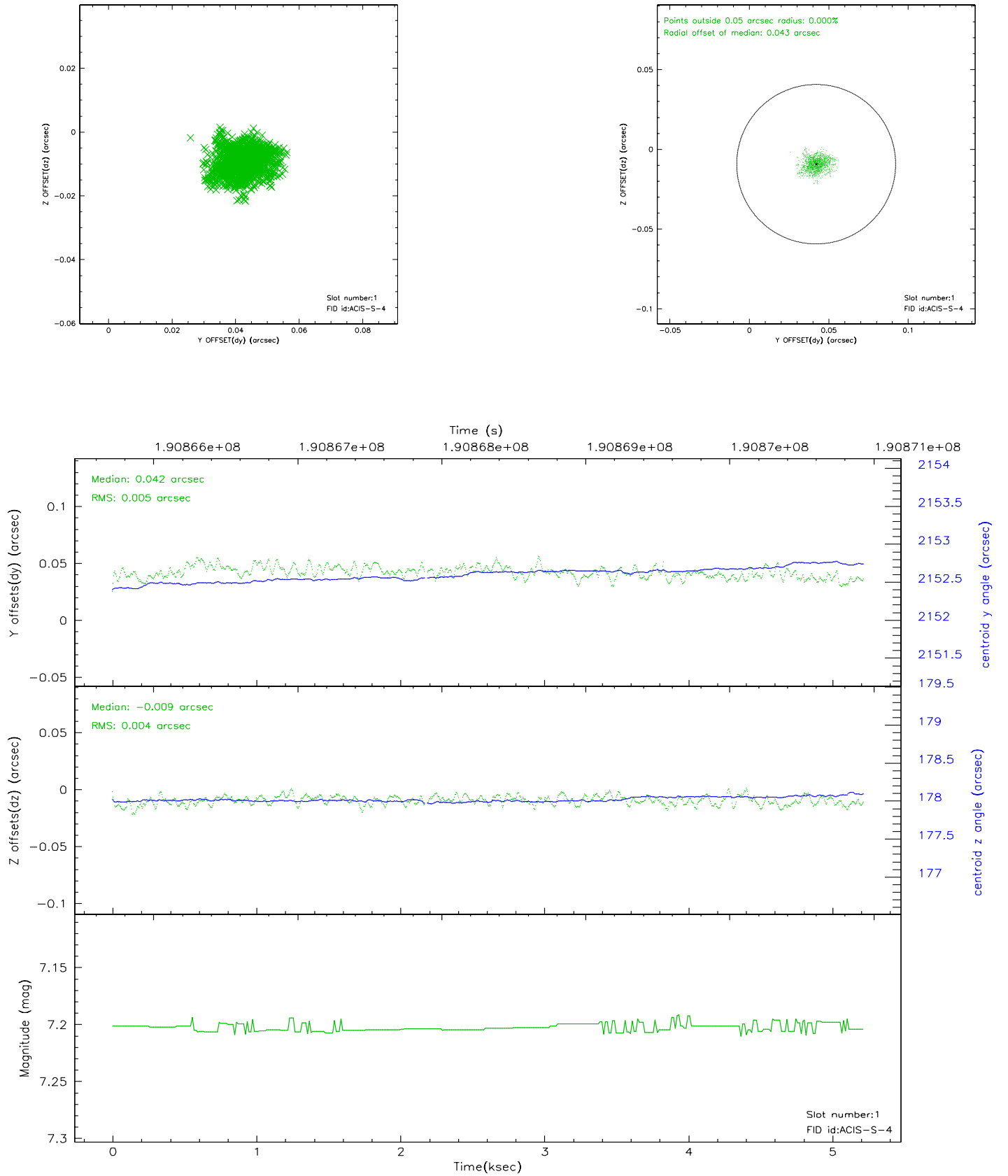


## 2.5 FID Slots

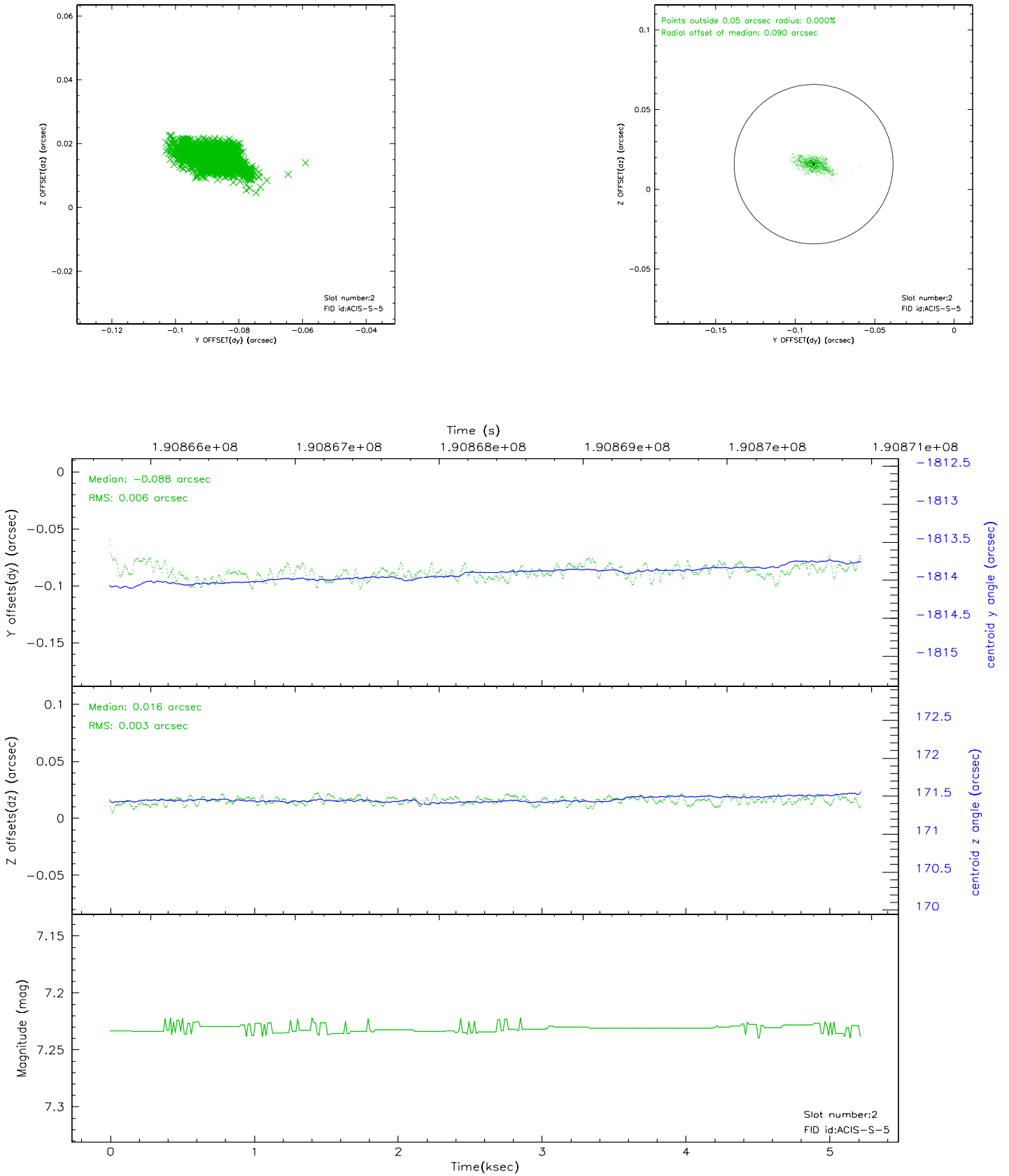
### 2.5.1 Slot 0



## 2.5.2 Slot 1



### 2.5.3 Slot 2





## A Summary

### A.1 Status

V&V Scientist	Beth Sundheim
V&V Date (YYYY-MM-DD)	2008.04.14
V&V Edition	1
V&V Disposition and Status	OK
V&V Charge Time	5.216

### A.2 Comments