

V&V Reference Report

L2 ASCDS Version : 7.6.8.1

Observation 4439 - L2 Version 001
Chandra X-Ray Center

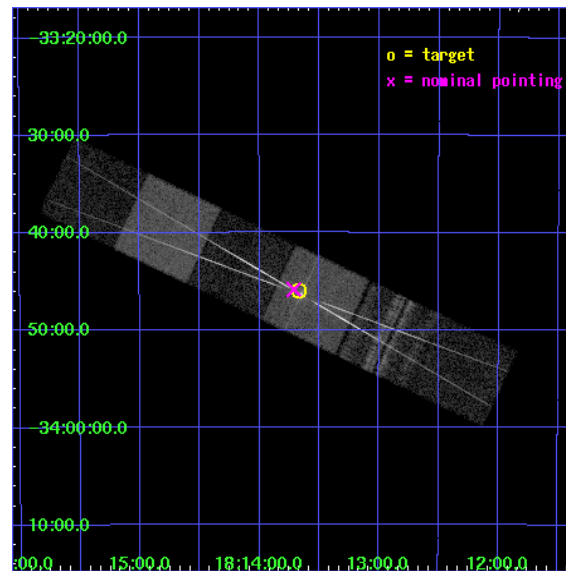
L2 Processing Date : Aug 9 2006

Contents

1	Front	2
2	OBI	3
2.1	OBI	3
2.1.1	Images	3
2.1.2	Bias	3
2.1.3	Parameters	4
2.1.4	Events	4
2.2	Compared Parameters	5
2.3	Aspect	6
2.4	Star Slots	9
2.4.1	Slot 3	9
2.4.2	Slot 4	10
2.4.3	Slot 5	11
2.4.4	Slot 6	12
2.5	FID Slots	13
2.5.1	Slot 0	13
2.5.2	Slot 1	14
2.5.3	Slot 2	15
3	Gratings	16
3.1	HEG Arm	16
3.2	MEG Arm	18
A	Summary	20
A.1	Status	20
A.2	Comments	20

1 Front

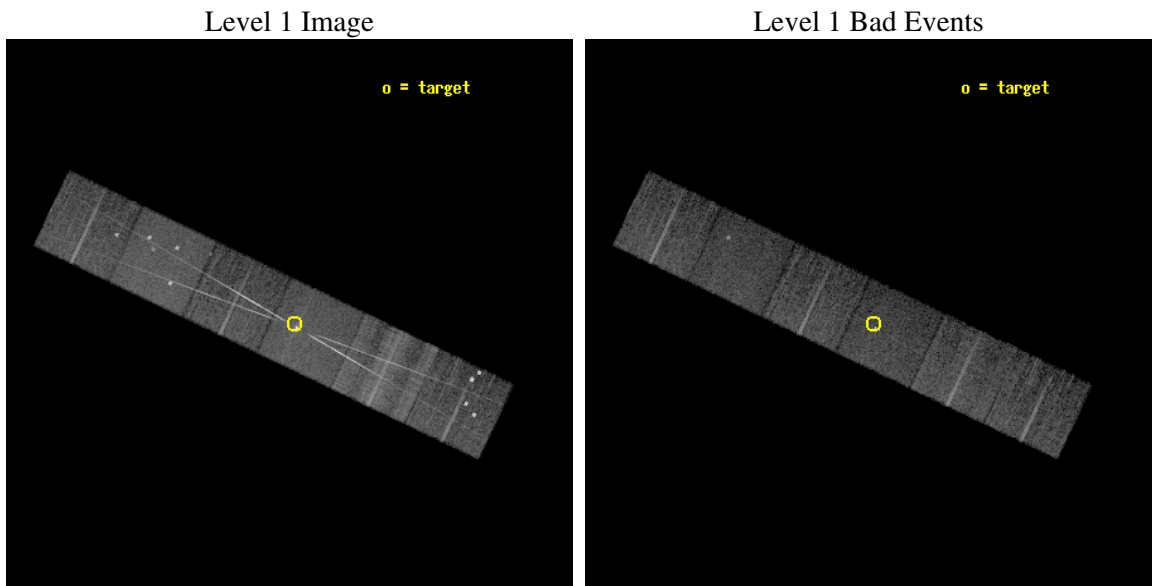
seq_num	400324
obs_id	4439
title	Localization and Spectroscopy of the Millisecond X-Ray Pulsar XTE J1814-338
observer	Prof. Deepto Chakrabarty
object	XTE J1814-338
dtcycle	0
cycle	P
ra_targ	273.416667
dec_targ	-33.766667
ra_nom	273.42790288403
dec_nom	-33.764099624797
roll_nom	25.346431318303
revision	3
ontime	9983.9999628067
livetime	9857.5765436346
ontime4	9980.7589825094
ontime5	9983.9999628067
ontime6	9980.7589825094
ontime7	9983.9999628067
ontime8	9983.9999628067
ontime9	9980.7589825094
l2events	161942



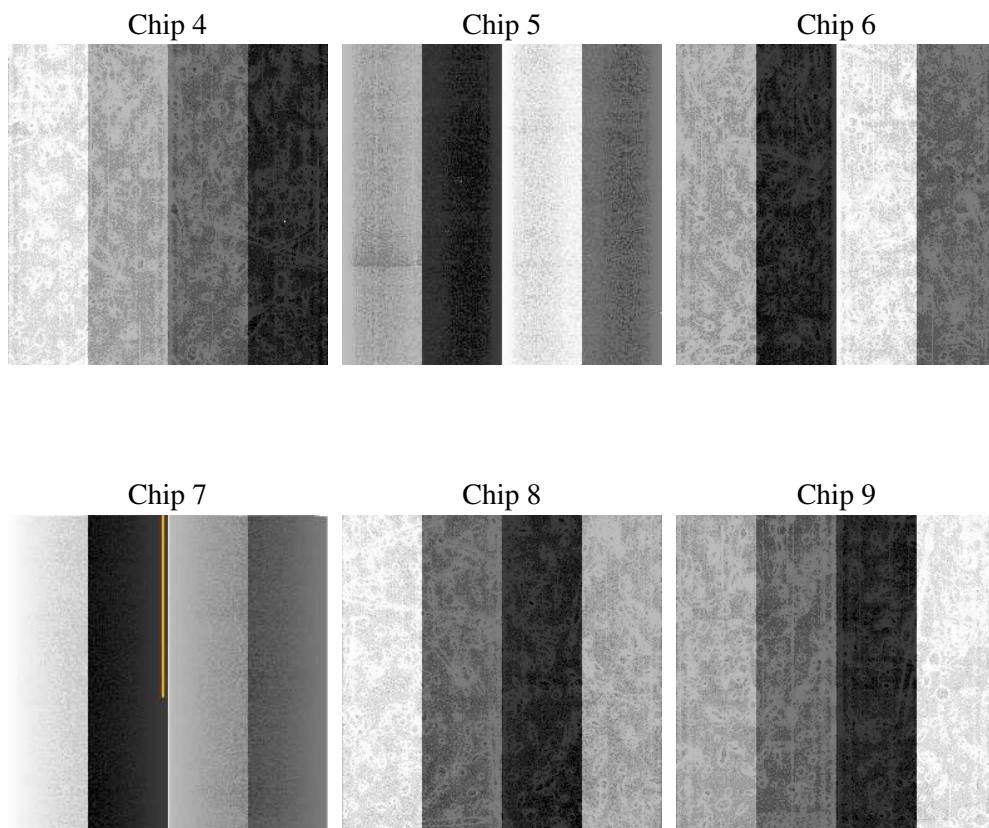
2 OBI

2.1 OBI

2.1.1 Images



2.1.2 Bias



2.1.3 Parameters

obi_num	0
ascdsver	7.6.8.1
caldbver	3.2.2
date	2006-08-09T13:23:30
revision	3

sched_exp_time	10124.600000
ontime	9988.7816045582
ontime4	9985.5406242609
ontime5	9988.7816045582
ontime6	9985.5406242609
ontime7	9988.7816045582
ontime8	9988.7815846503
ontime9	9985.540604353
l1events	557736

2.1.4 Events

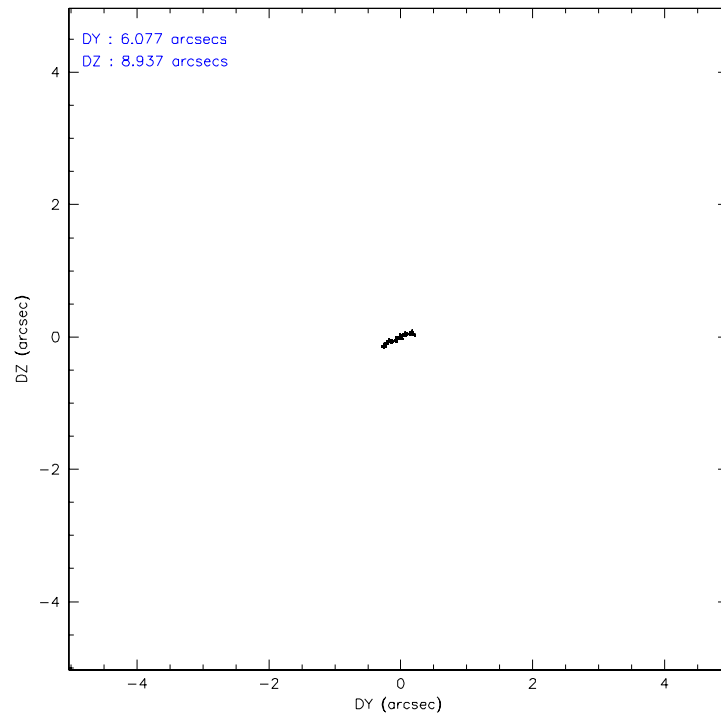
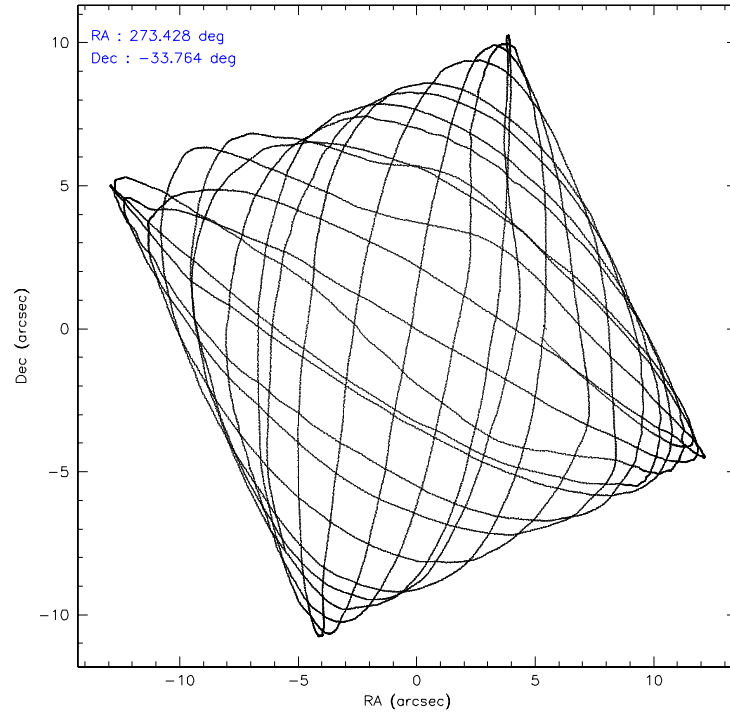
	ccd 4	ccd 5	ccd 6	ccd 7	ccd 8	ccd 9
level 1 events	73235	96532	86531	102655	118647	80136
rejected events	61670	49852	57998	50368	67105	57221
rejected %	84%	51%	67%	49%	56%	71%

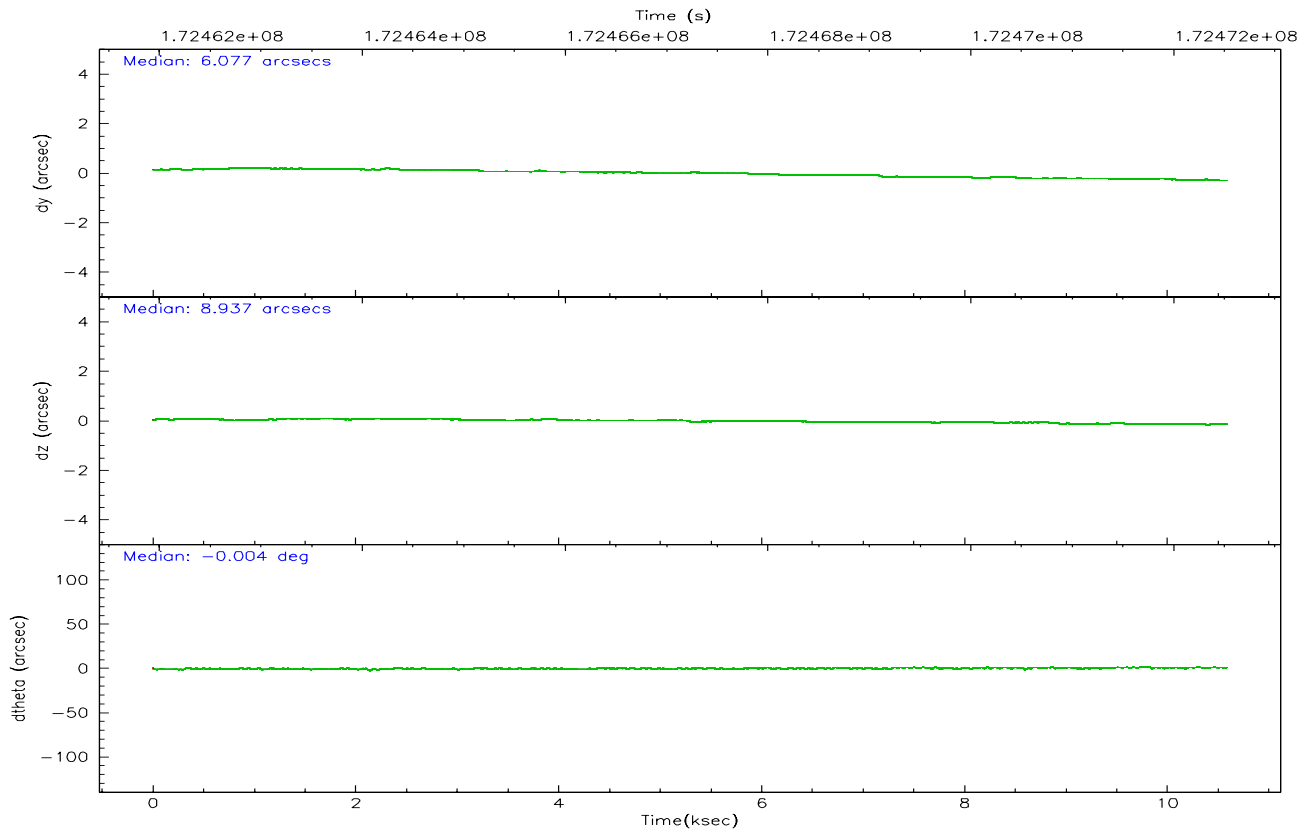
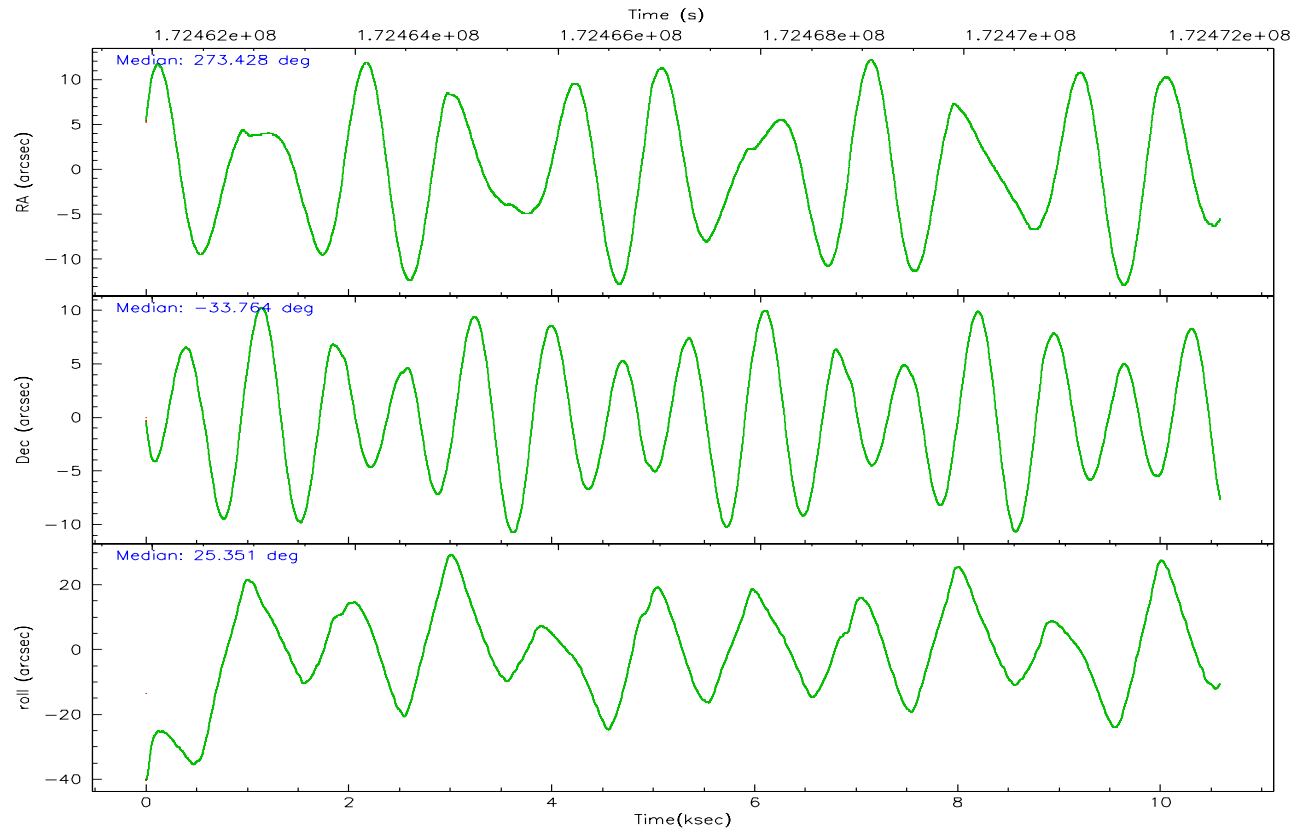
	ccd 4	ccd 5	ccd 6	ccd 7	ccd 8	ccd 9
grade 0 events	6288	7252	19444	5636	21015	14717
	8%	7%	22%	5%	17%	18%
grade 1 events	94	93	143	110	156	83
	0%	0%	0%	0%	0%	0%
grade 2 events	2344	14319	4088	13995	8102	4930
	3%	14%	4%	13%	6%	6%
grade 3 events	829	1416	1377	3597	6250	820
	1%	1%	1%	3%	5%	1%
grade 4 events	802	1221	1360	3604	5782	818
	1%	1%	1%	3%	4%	1%
grade 5 events	2414	4450	2794	5579	3882	2909
	3%	4%	3%	5%	3%	3%
grade 6 events	1308	22498	2279	25487	10435	1642
	1%	23%	2%	24%	8%	2%
grade 7 events	59156	45283	55046	44647	63025	54217
	80%	46%	63%	43%	53%	67%

2.2 Compared Parameters

Parameter	Planned	Actual	Parameter	Planned	Actual
Instrument	ACIS	ACIS	Obspar format version number	6	6
Detector	ACIS-456789	ACIS-456789	Obspar file type	PREDICTED	ACTUAL
Grating	HETG	HETG	Obspar update status	NONE	UPDATED
Data mode	FAINT	FAINT	On-chip summing requested	N	N
Observation mode	POINTING	POINTING	Subarray requested	NONE	NONE
Pointing RA	273.409633	273.4279028840305	Alternating exposures requested	N	N
Pointing Dec	-33.786728	-33.76409962479703	Primary exposure time	0.000000	3.2
Pointing Roll	25.179648	25.34643131830343			
SIM focus pos (mm)	-0.684267	-0.6828225247311905			
SIM defocus (mm)	0	0.001444936568705701			
SIM translation stage pos (mm)	-190.132523	-190.1425803651734			
SIM translation stage offset (mm)	0	0.01005778216563158			
Observation start time	172462399.184000	172461298.91176			
Observation start date	2003-06-20T02:12:15	2003-06-20T01:54:58			
Observation end time	172472524.184000	172473138.17477			
Observation end date	2003-06-20T05:01:00	2003-06-20T05:12:18			
Read mode	TIMED	TIMED			

2.3 Aspect



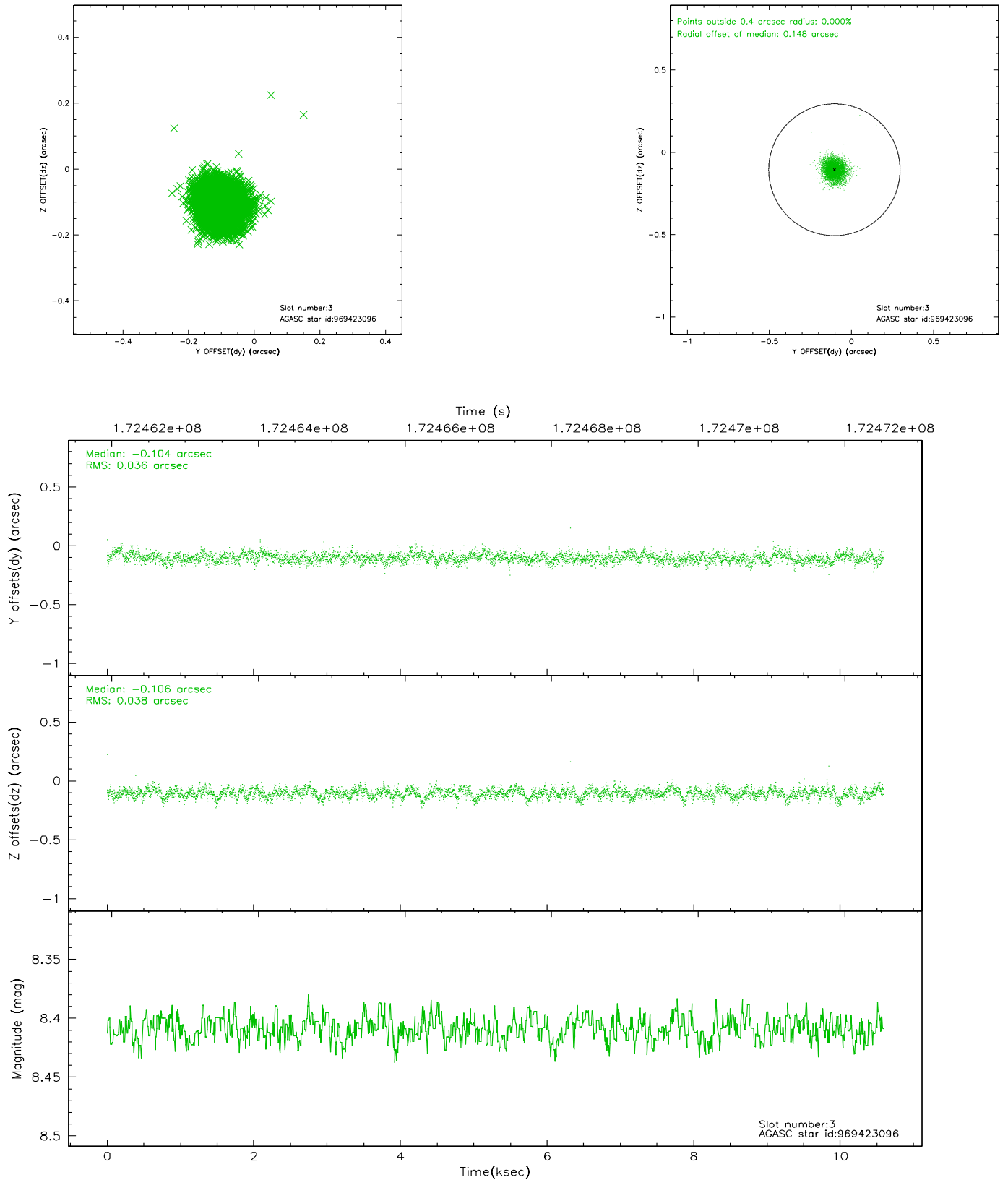


Slot Statistics

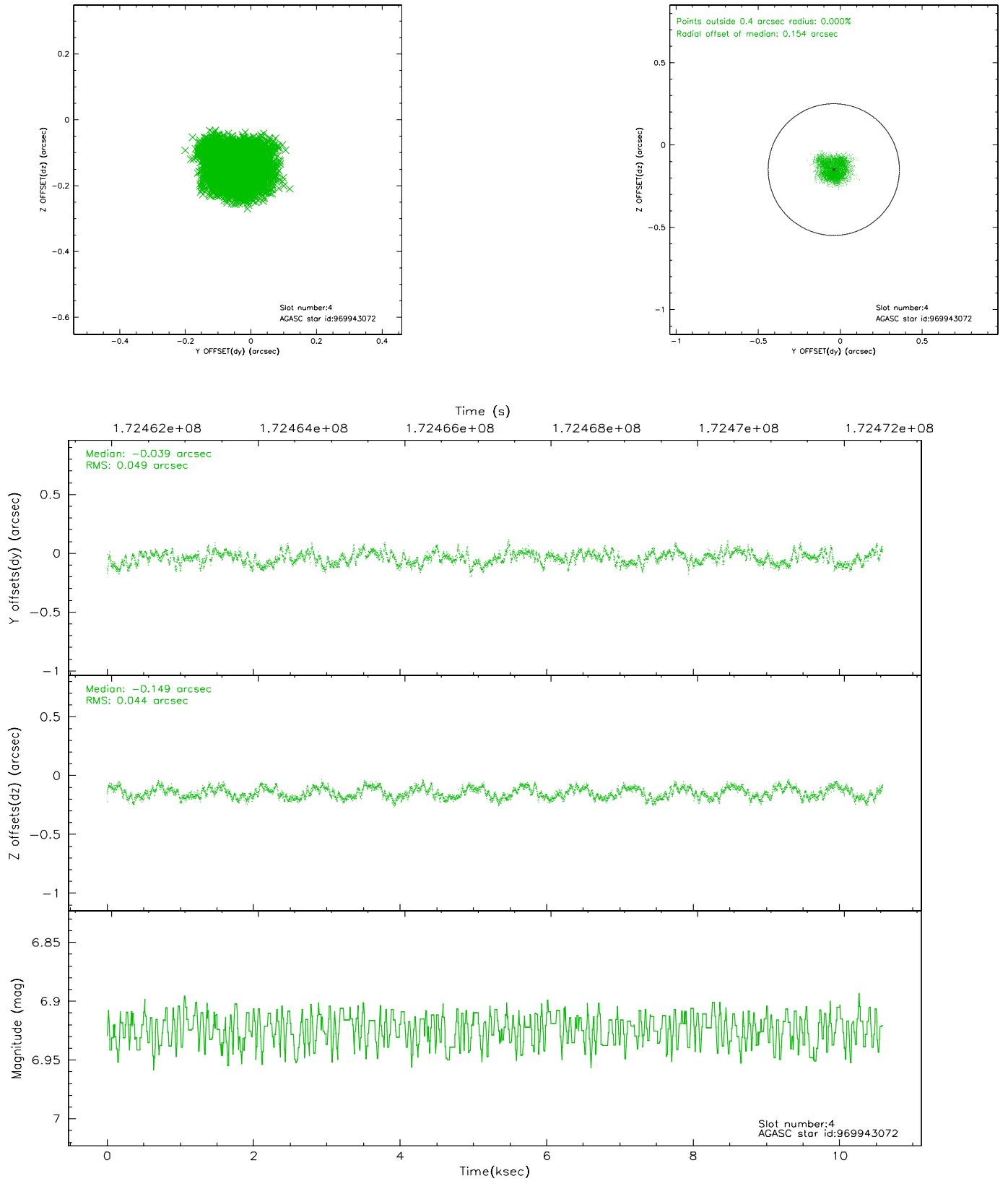
slot	status	id	mag	n_pts	med_dy	med_dz	dr1	dr2	ra	dec	mean_y	mean_z
0	FID	ACIS-S-1	7.18	2582	0.003	0.032	0.008	0.013	0.000000	0.000000	937.21	-1725.71
1	FID	ACIS-S-5	7.23	2582	-0.027	0.017	0.006	0.010	0.000000	0.000000	-1811.49	171.39
2	FID	ACIS-S-6	7.36	2583	0.002	-0.037	0.008	0.012	0.000000	0.000000	402.29	815.80
3	GUIDE	969423096	8.41	5165	-0.104	-0.106	0.055	0.091	273.993243	-33.502196	2018.75	176.73
4	GUIDE	969943072	6.92	5166	-0.039	-0.149	0.071	0.109	272.673807	-33.918752	-2194.80	497.93
5	GUIDE	969413584	9.39	5162	0.209	0.230	0.081	0.132	273.781101	-32.900670	2372.18	2407.27
6	GUIDE	969942440	8.86	5161	-0.062	0.026	0.081	0.131	273.001128	-34.593225	-2332.14	-2114.22
7	OMITTED		0.00	0	0.000	0.000	0.000	0.000	0.000000	0.000000	0.00	0.00

2.4 Star Slots

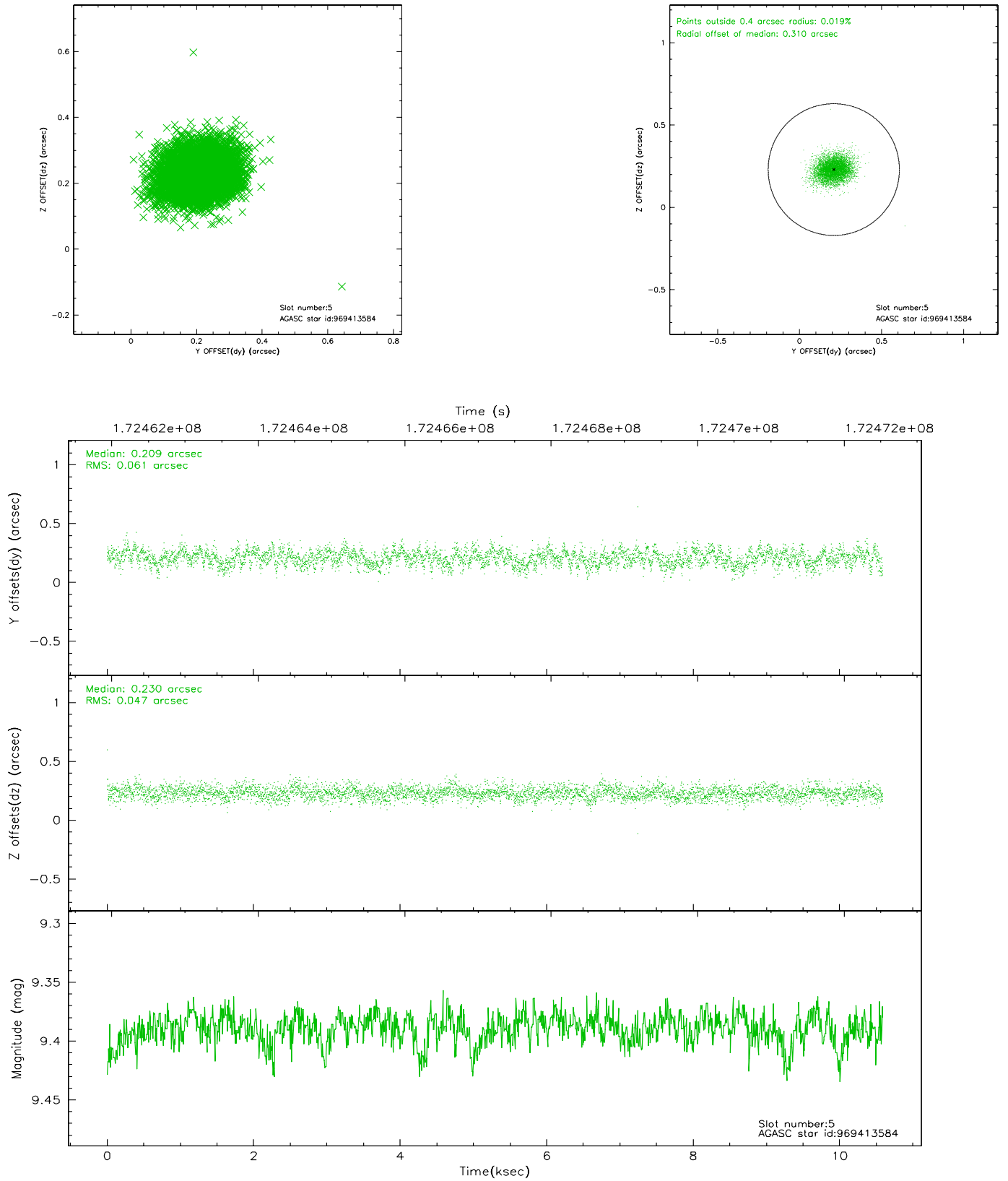
2.4.1 Slot 3



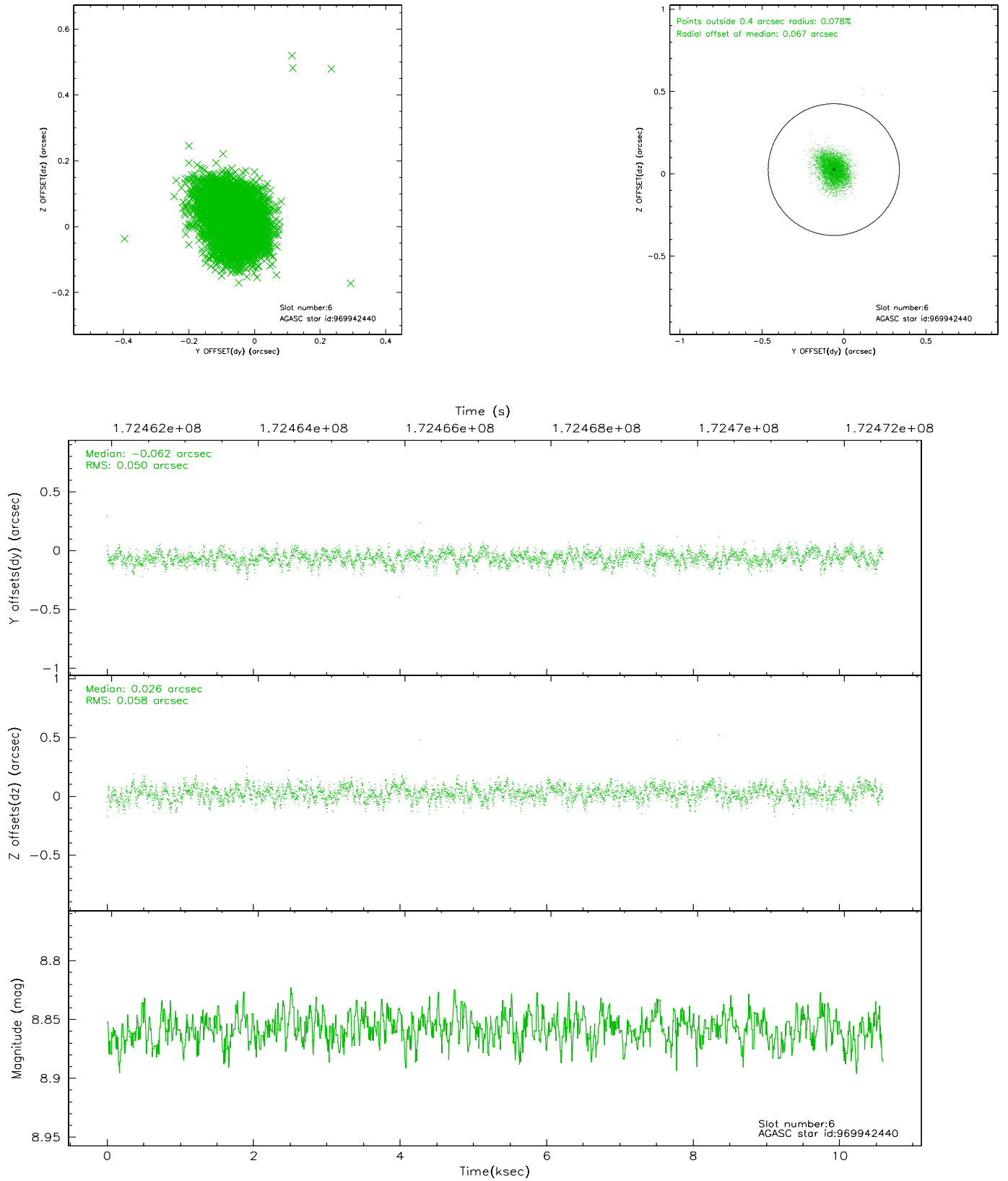
2.4.2 Slot 4



2.4.3 Slot 5

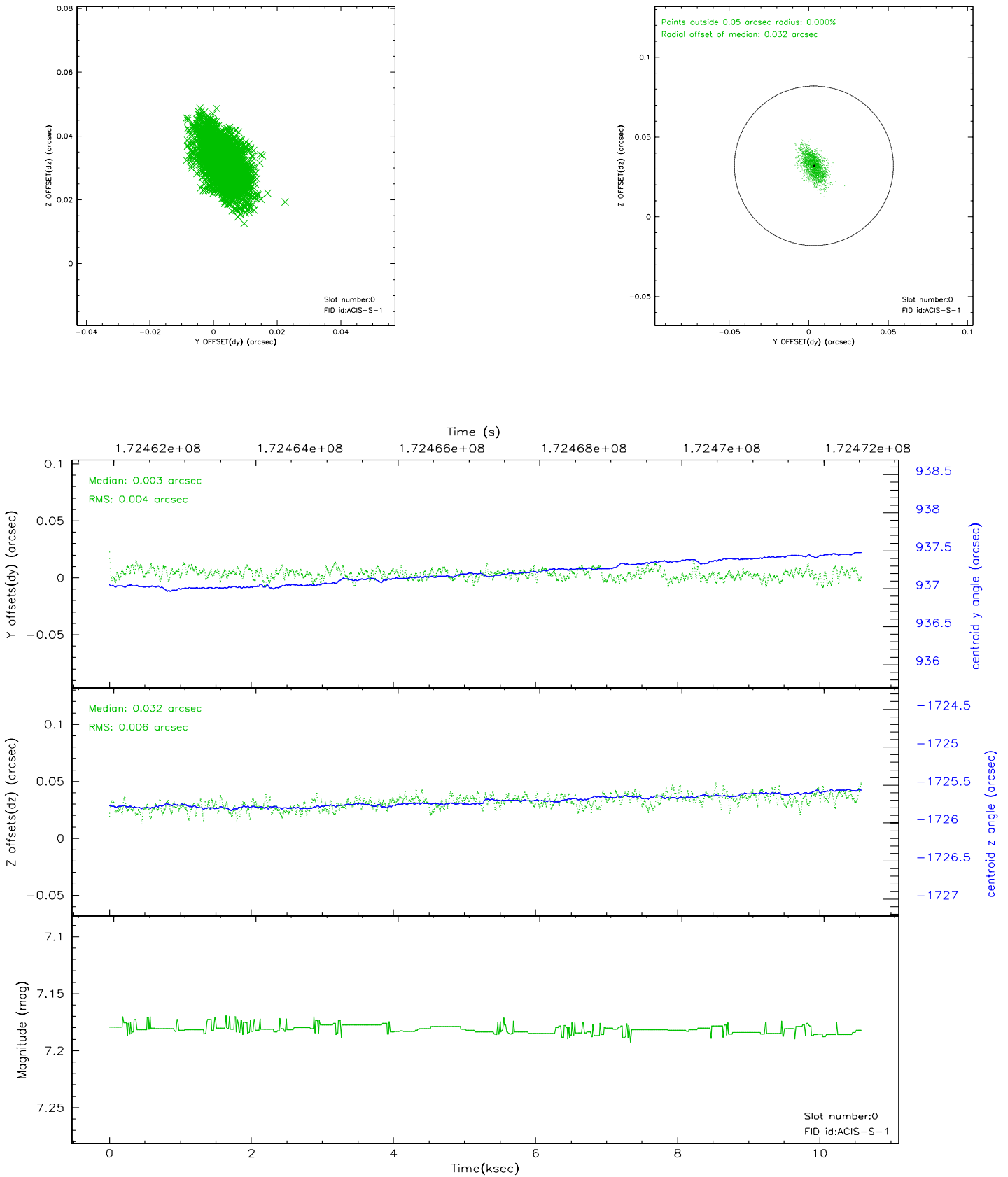


2.4.4 Slot 6

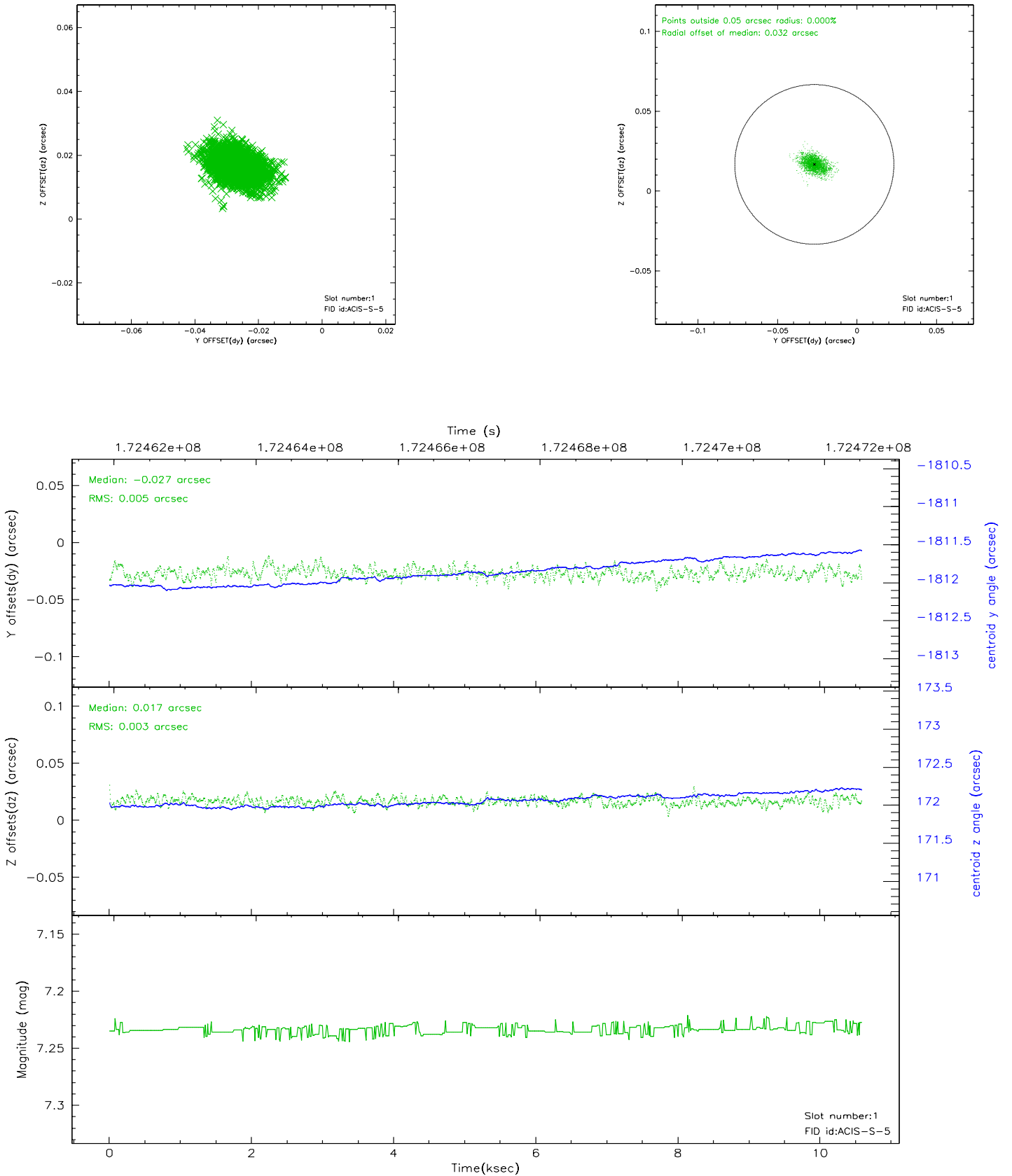


2.5 FID Slots

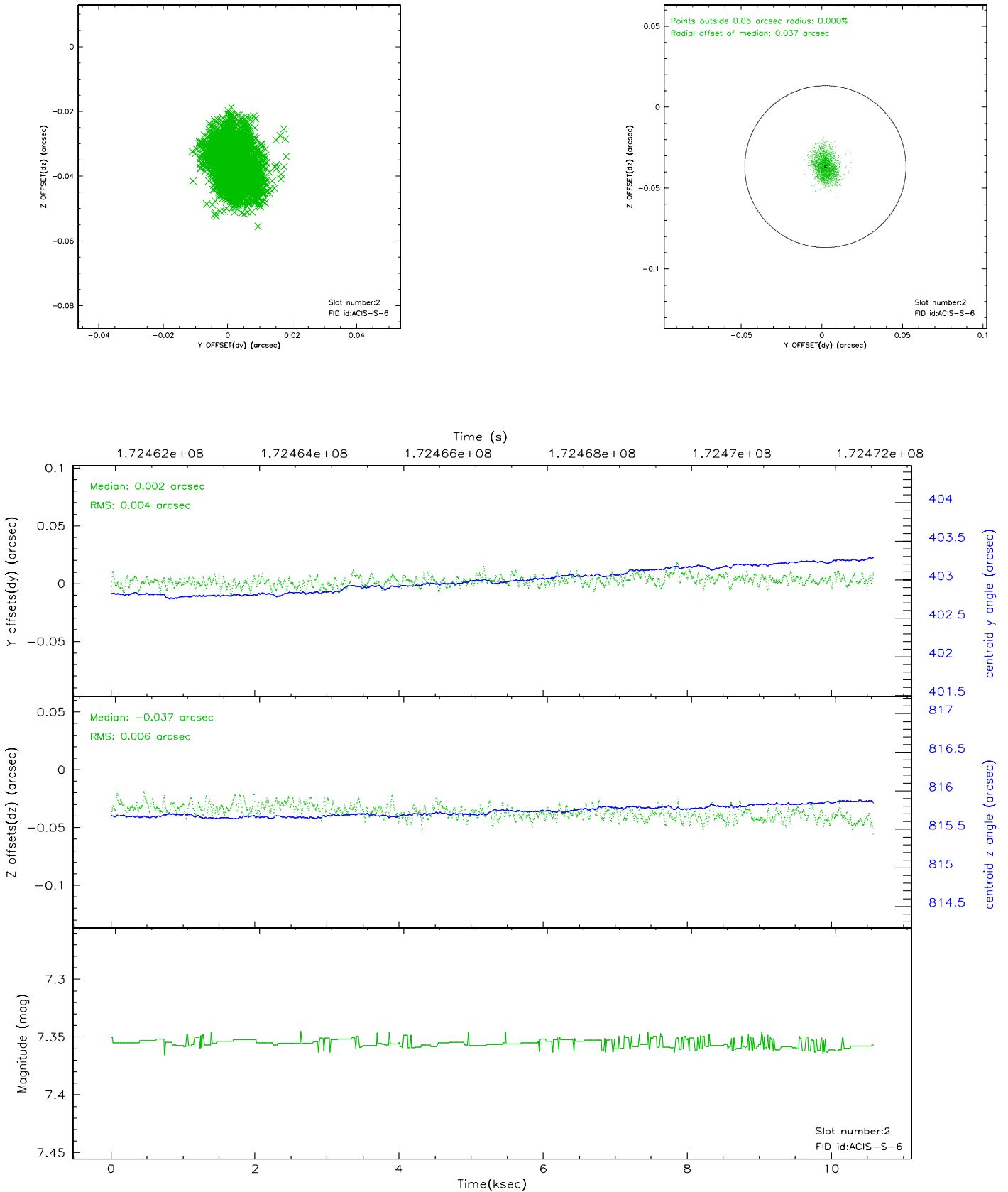
2.5.1 Slot 0



2.5.2 Slot 1

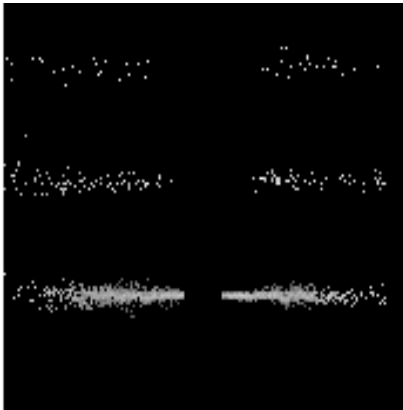


2.5.3 Slot 2

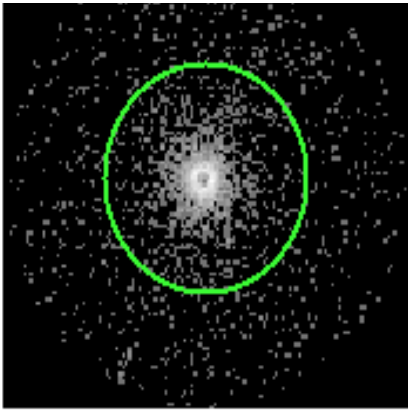


3 Gratings

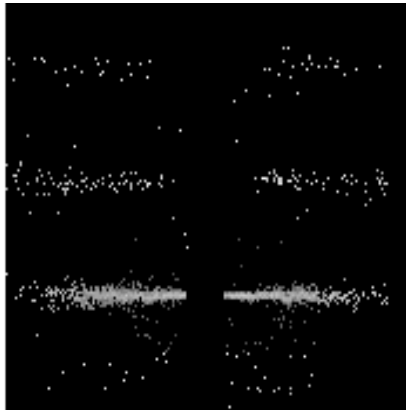
3.1 HEG Arm



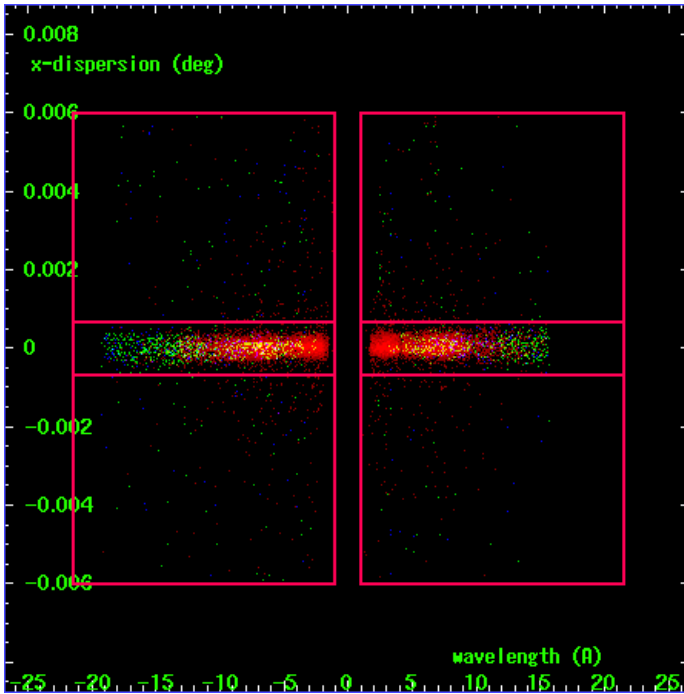
HEG Order Sort 123



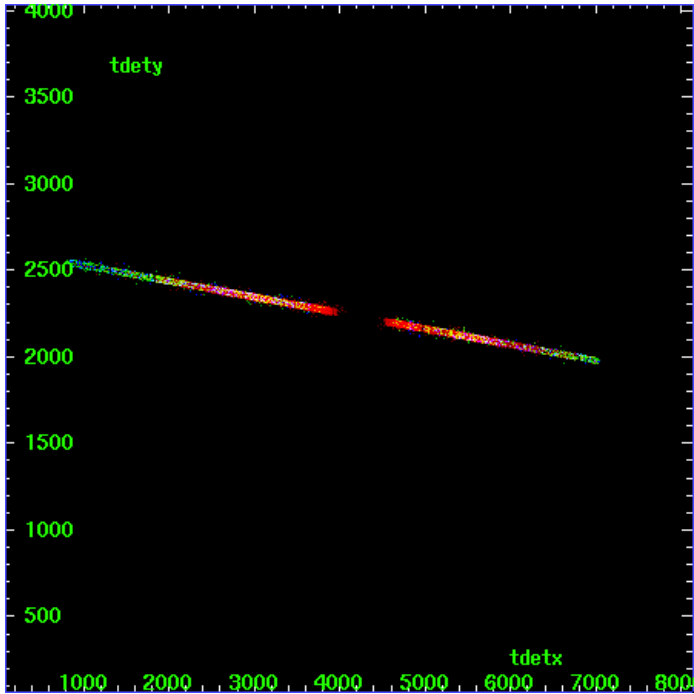
HEG Zero Order



HEG Order Sort ALL

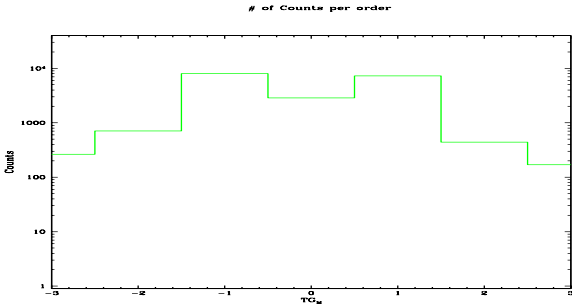


Spot Image HEG

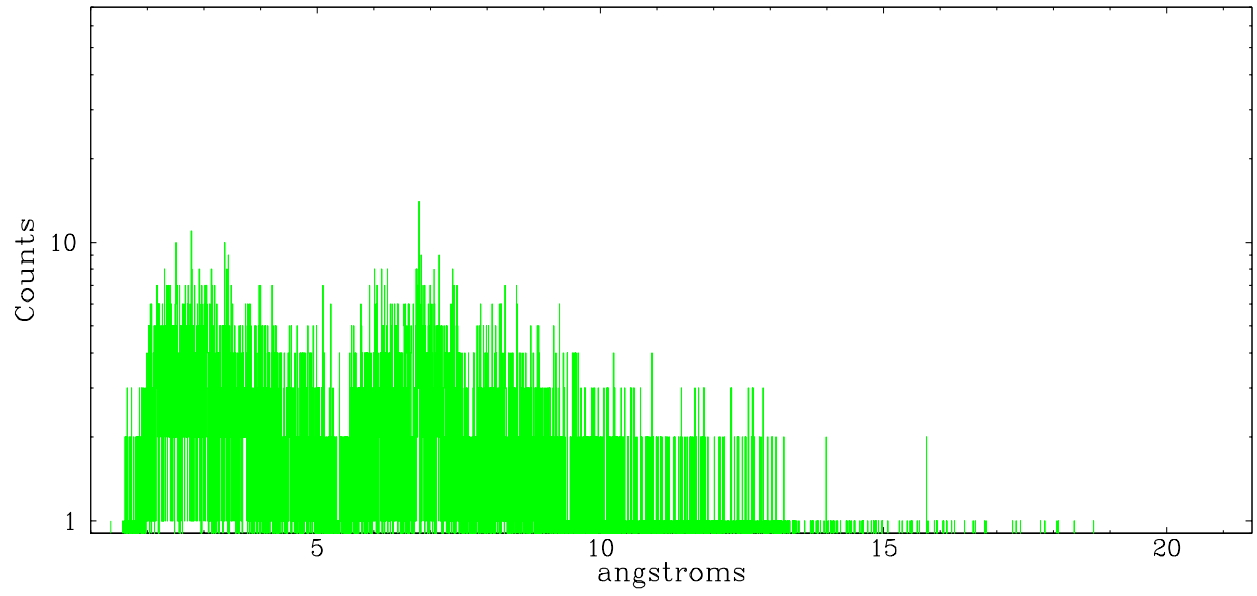


Full Detector HEG

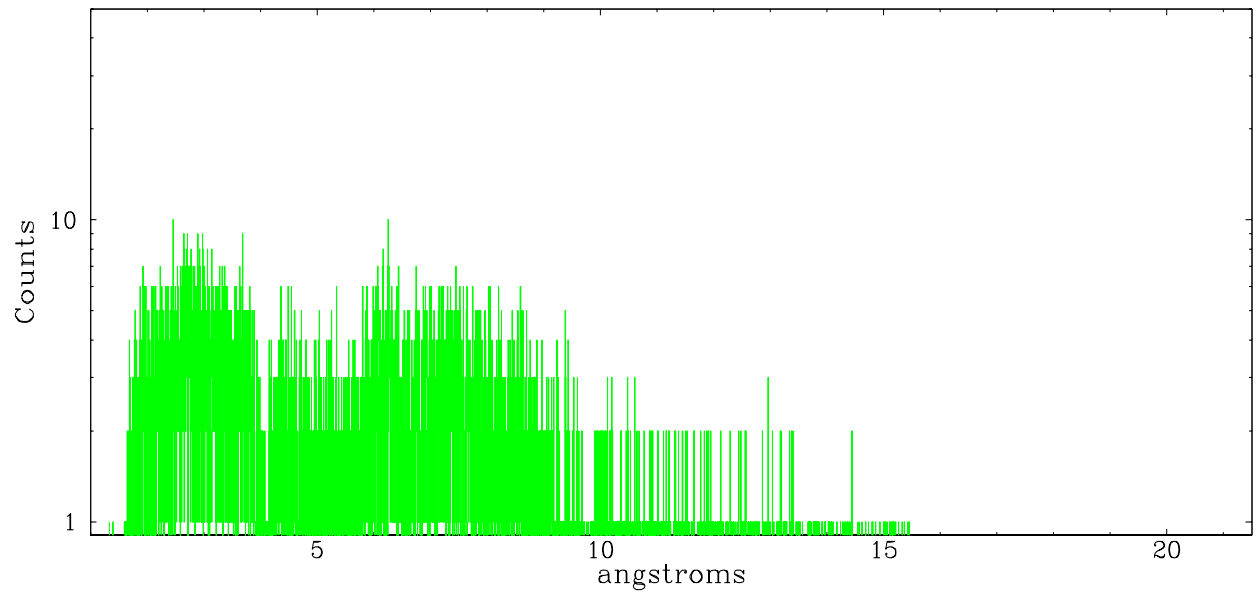
	order -3	order -2	order -1	order 0	order 1	order 2	order 3
Events	263	708	7968	2871	7256	440	170



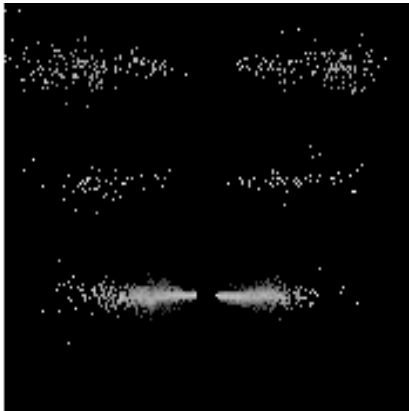
heg order -1



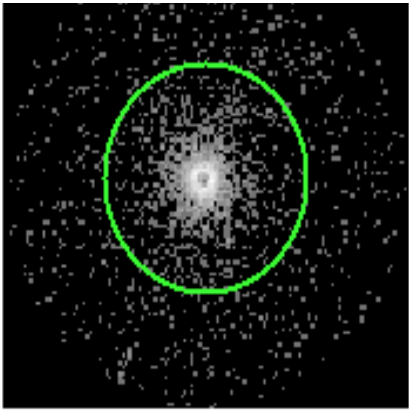
heg order +1



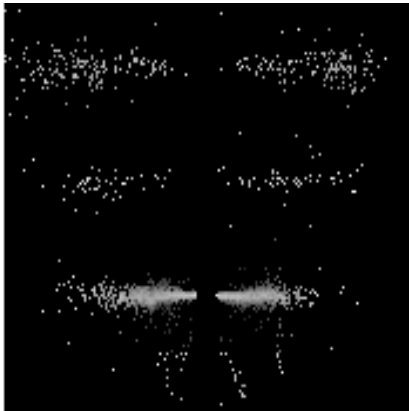
3.2 MEG Arm



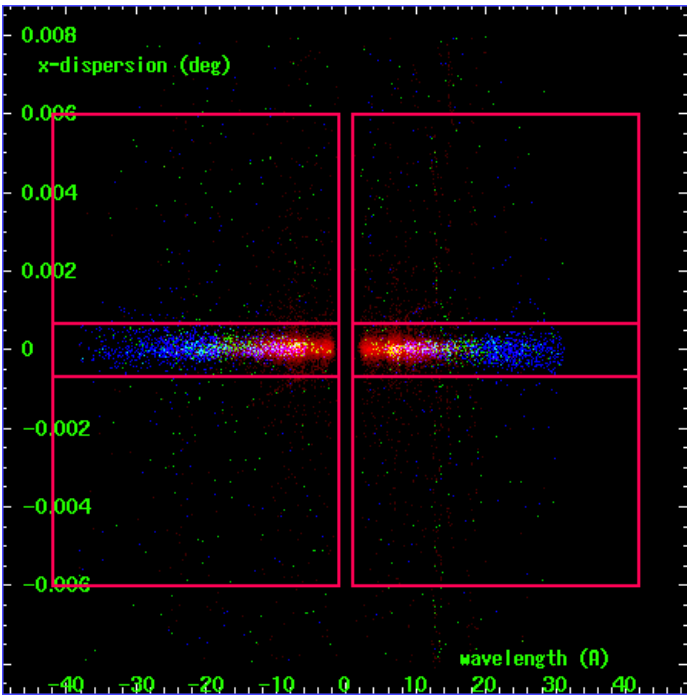
MEG Order Sort 123



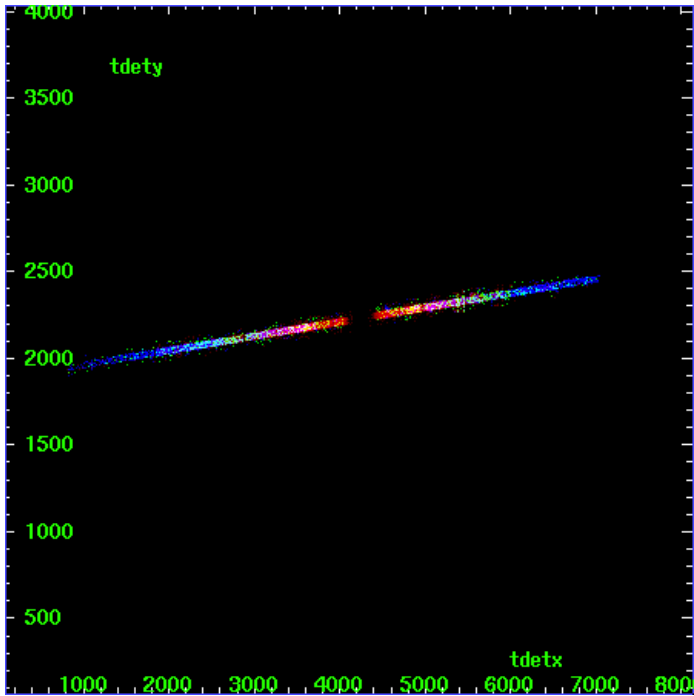
MEG Zero Order



MEG Order Sort ALL

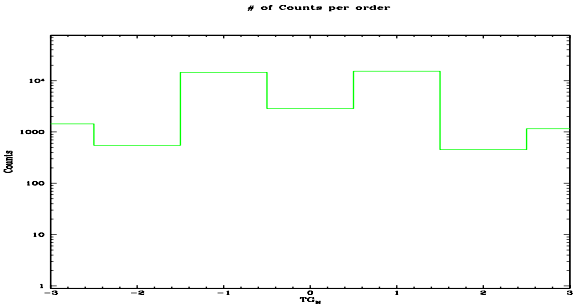


Spot Image MEG

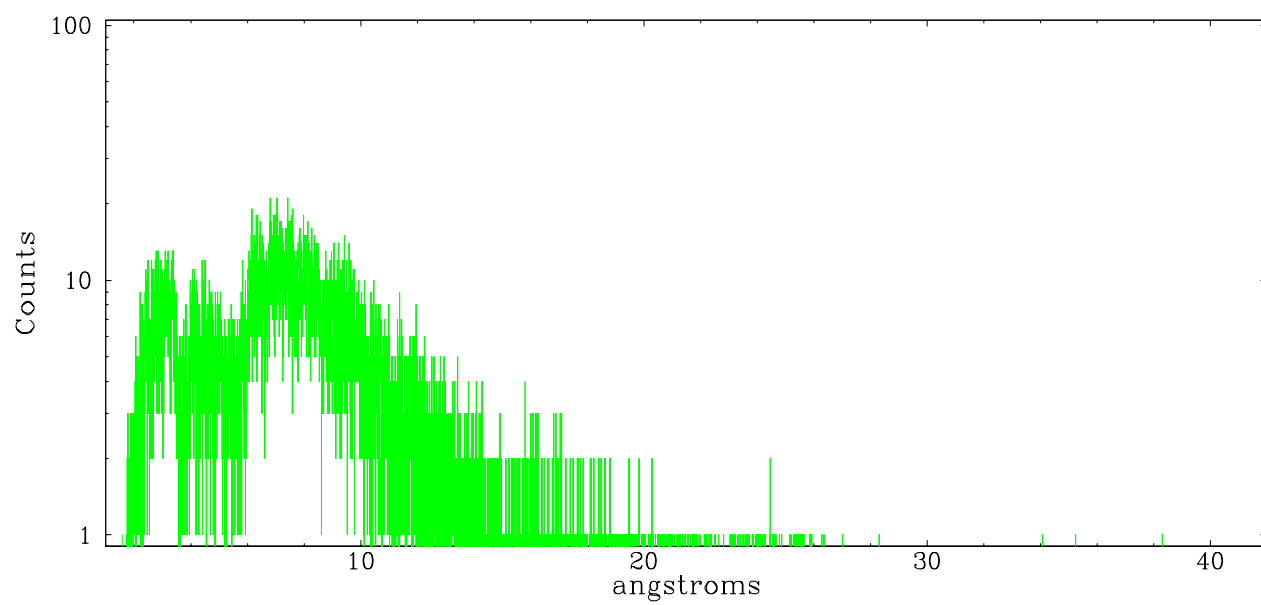


Full Detector MEG

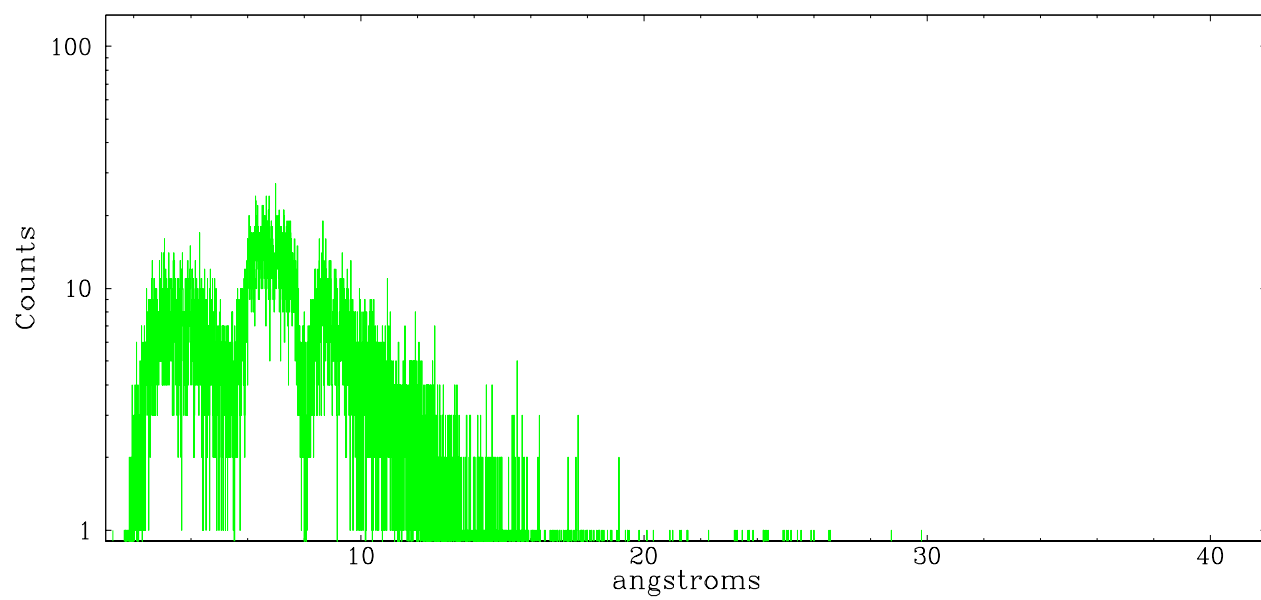
	order -3	order -2	order -1	order 0	order 1	order 2	order 3
Events	1437	549	14530	2871	15329	453	1154



meg order -1



meg order +1



A Summary

A.1 Status

V&V Scientist	Beth Sundheim
V&V Date (YYYY-MM-DD)	2010.10.04
V&V Edition	2
V&V Disposition and Status	OK
V&V Charge Time	9.987

A.2 Comments

The guide star in slot 7 was manually excluded from the processing due to poor data quality.