

V&V Reference Report

L2 ASCDS Version : 7.6.9

Observation 4379 - L2 Version 001
Chandra X-Ray Center

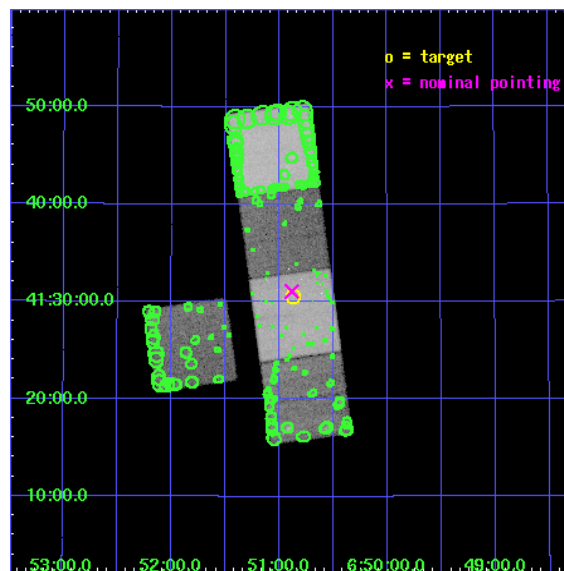
L2 Processing Date : Oct 5 2006

Contents

1	Front	2
2	OBI	3
2.1	OBI	3
2.1.1	Images	3
2.1.2	Bias	3
2.1.3	Parameters	4
2.1.4	Events	4
2.2	Compared Parameters	5
2.3	Aspect	6
2.4	Star Slots	9
2.4.1	Slot 3	9
2.4.2	Slot 4	10
2.4.3	Slot 5	11
2.4.4	Slot 6	12
2.4.5	Slot 7	13
2.5	FID Slots	14
2.5.1	Slot 0	14
2.5.2	Slot 1	15
2.5.3	Slot 2	16
3	Point Sources	17
A	Summary	18
A.1	Status	18
A.2	Comments	18

1 Front

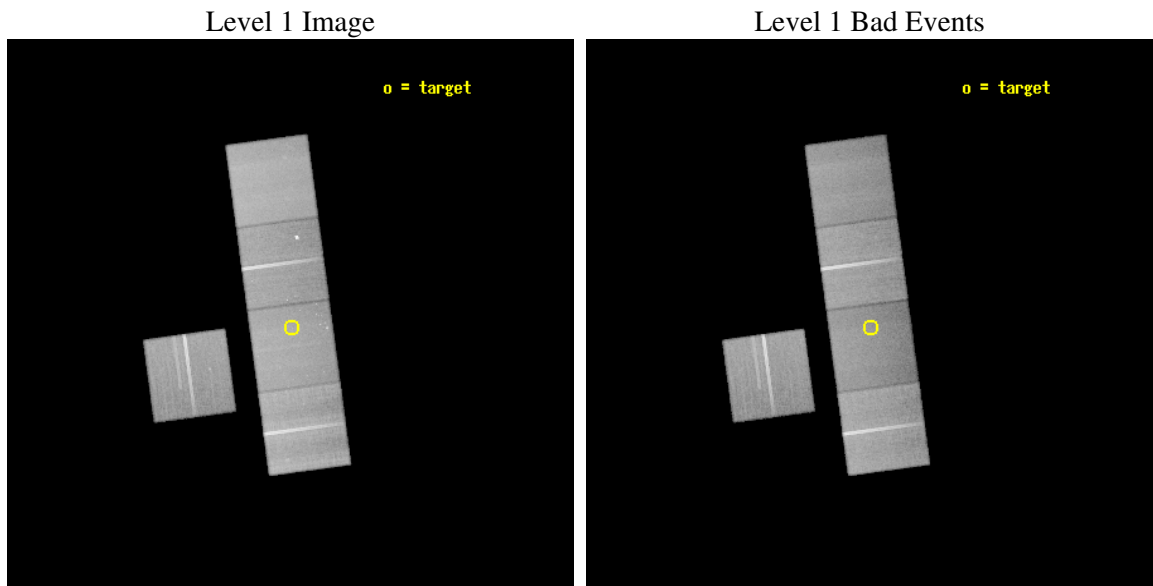
seq_num	800208
obs_id	4379
title	A SEARCH FOR X-RAY EMISSION FROM A PROTO-CLUSTER AT Z=3.8
observer	Dr Caleb Scharf
object	4C41.17
dtcycle	0
cycle	P
ra_targ	102.717083
dec_targ	41.508556
ra_nom	102.72104451693
dec_nom	41.517777184582
roll_nom	82.316293797344
revision	2
ontime	75100.558885336
livetime	74119.314795272
ontime3	75087.995054483
ontime5	75100.558885336
ontime6	75097.417895228
ontime7	75100.558885336
ontime8	75100.558875442
l2events	518962



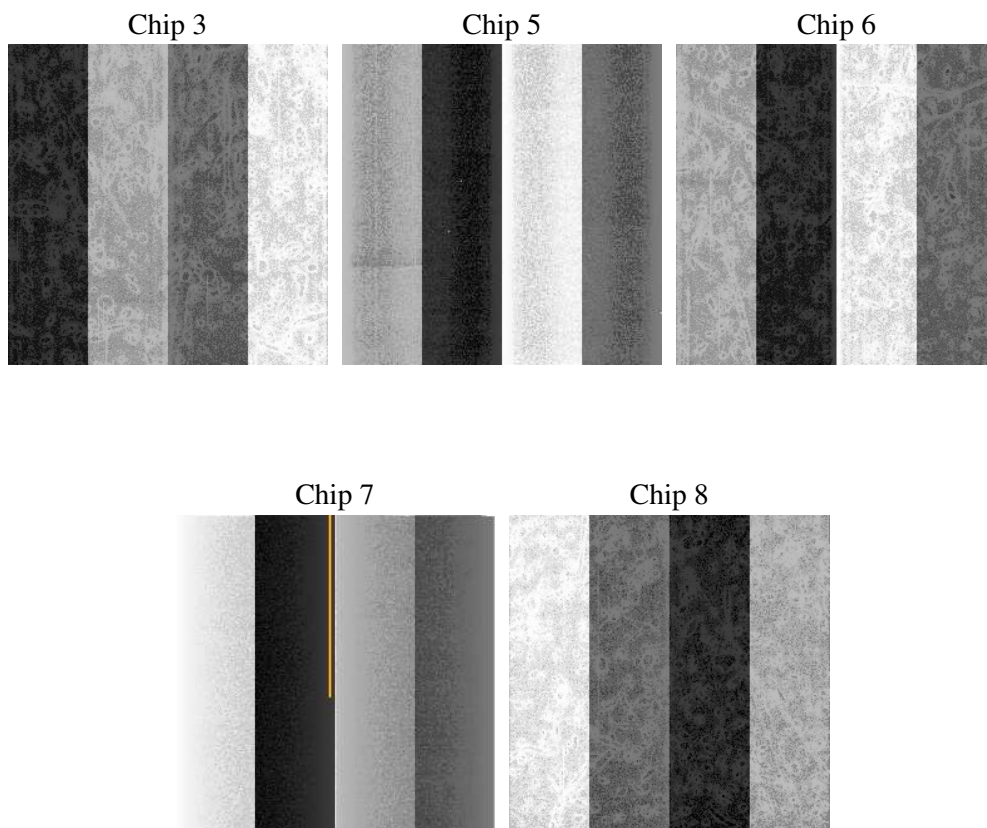
2 OBI

2.1 OBI

2.1.1 Images



2.1.2 Bias



2.1.3 Parameters

obi_num	0
ascdsver	7.6.9
caldbver	3.2.3
date	2006-10-05T18:04:58
revision	2

sched_exp_time	75000.000000
ontime	75107.607209504
ontime3	75095.043378651
ontime5	75107.607239425
ontime6	75104.466219395
ontime7	75107.607209504
ontime8	75107.607199609
l1events	2229624

2.1.4 Events

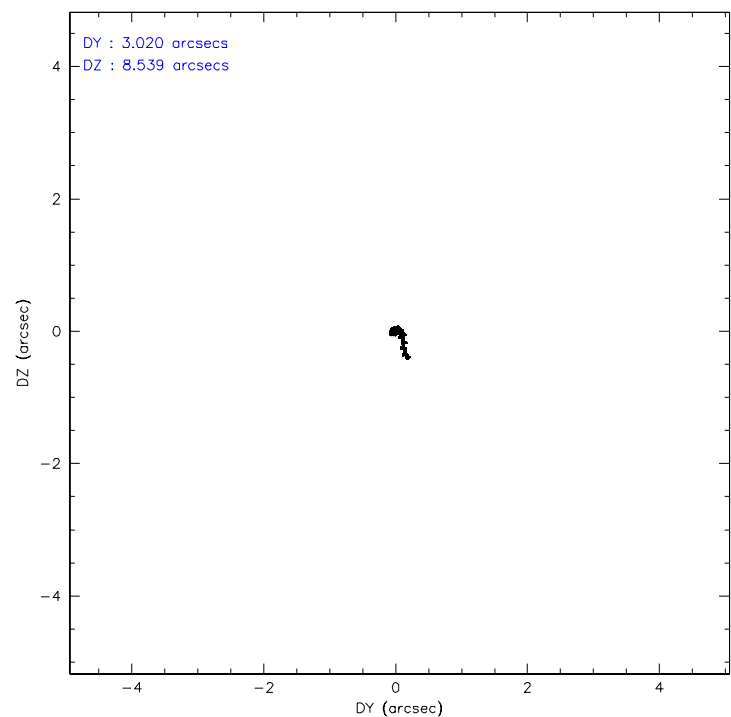
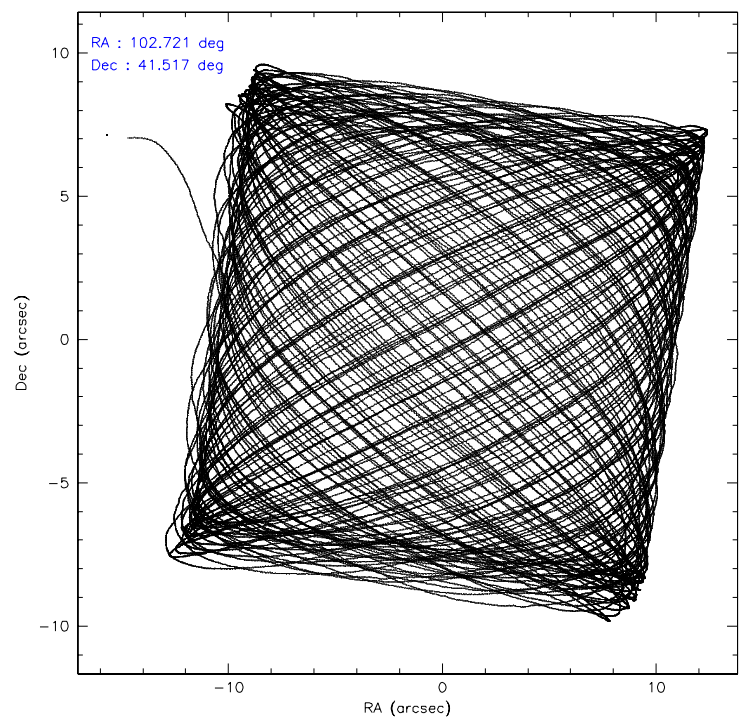
	ccd 3	ccd 5	ccd 6	ccd 7	ccd 8
level 1 events	387497	505376	407881	428027	500843
rejected events	350935	270747	362684	246530	389658
rejected %	90%	53%	88%	57%	77%

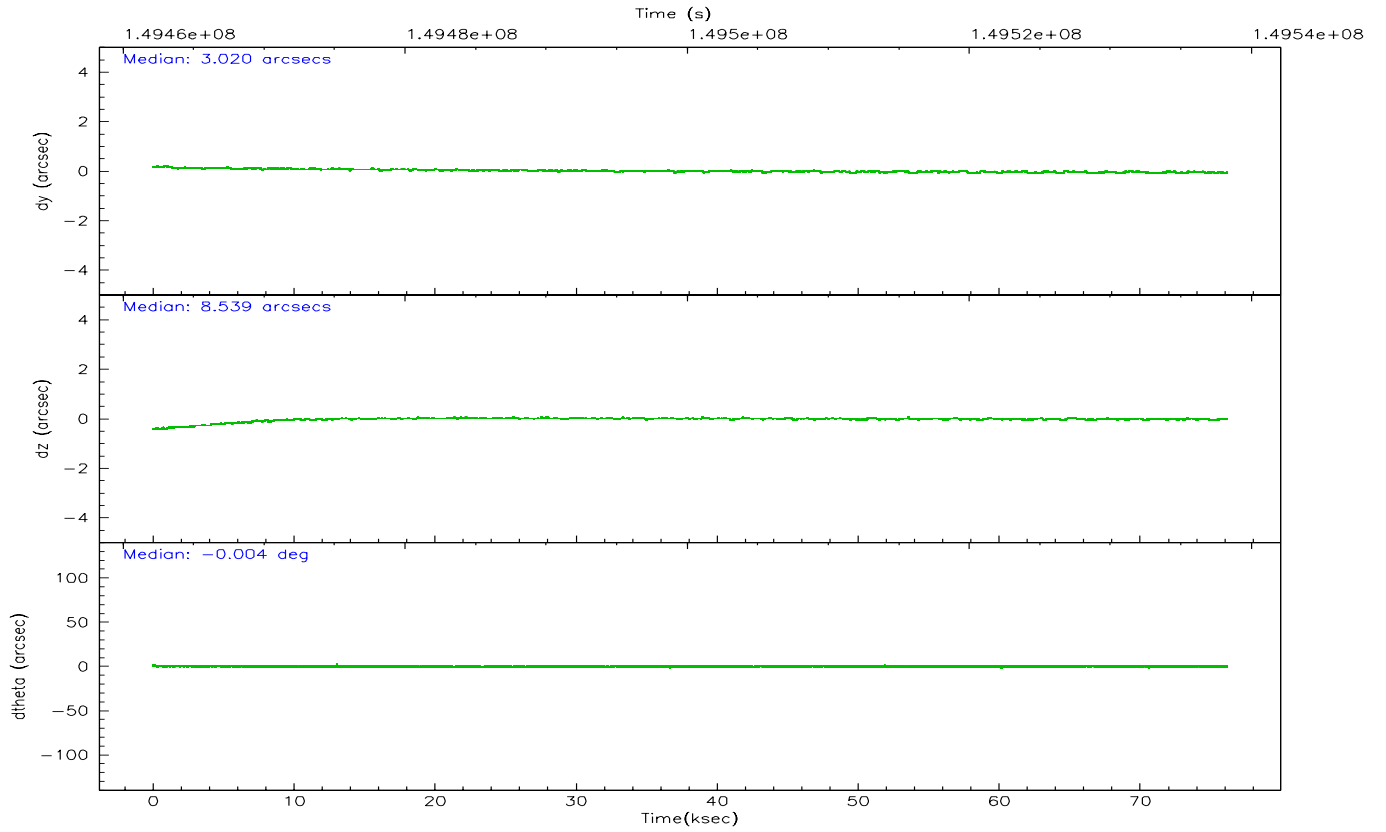
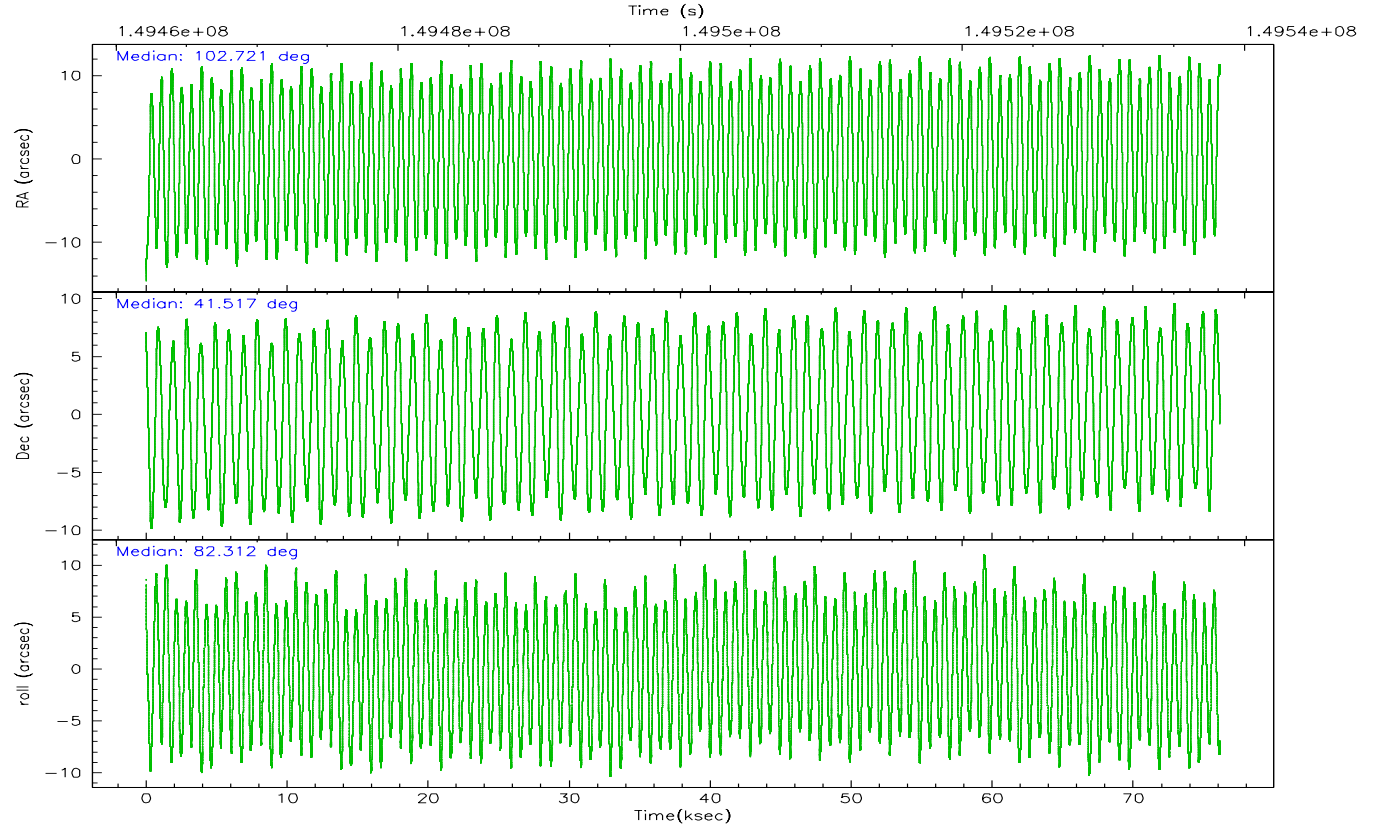
	ccd 3	ccd 5	ccd 6	ccd 7	ccd 8
grade 0 events	13167	8731	18637	11400	34861
	3%	1%	4%	2%	6%
grade 1 events	180	225	206	223	336
	0%	0%	0%	0%	0%
grade 2 events	7633	74774	8853	44539	23484
	1%	14%	2%	10%	4%
grade 3 events	4337	6402	4546	10757	12716
	1%	1%	1%	2%	2%
grade 4 events	4338	6149	4592	10821	11757
	1%	1%	1%	2%	2%
grade 5 events	14662	27386	15289	32393	21298
	3%	5%	3%	7%	4%
grade 6 events	7087	138584	8573	103994	28368
	1%	27%	2%	24%	5%
grade 7 events	336093	243125	347185	213900	368023
	86%	48%	85%	49%	73%

2.2 Compared Parameters

Parameter	Planned	Actual	Parameter	Planned	Actual
Instrument	ACIS	ACIS	Obspar format version number	6	6
Detector	ACIS-35678	ACIS-35678	Obspar file type	PREDICTED	ACTUAL
Grating	NONE	NONE	Obspar update status	NONE	UPDATED
Data mode	VFAINT	VFAINT	Number of optional ACIS chips dropped	0	0
Observation mode	POINTING	POINTING	On-chip summing requested	N	N
Pointing RA	102.735277	102.7210445169279	Subarray requested	NONE	NONE
Pointing Dec	41.492719	41.51777718458163	Alternating exposures requested	N	N
Pointing Roll	82.150230	82.31629379734416	Primary exposure time	0.000000	3.1
SIM focus pos (mm)	-0.684267	-0.6828225247311905			
SIM defocus (mm)	0	0.001444936568705701			
SIM translation stage pos (mm)	-190.132523	-190.1400660498719			
SIM translation stage offset (mm)	0	0.00754346686406393			
Observation start time	149463295.184000	149461842.10928			
Observation start date	2002-09-26T21:33:51	2002-09-26T21:10:42			
Observation end time	149538295.184000	149538995.39997			
Observation end date	2002-09-27T18:23:51	2002-09-27T18:36:35			
Read mode	TIMED	TIMED			

2.3 Aspect



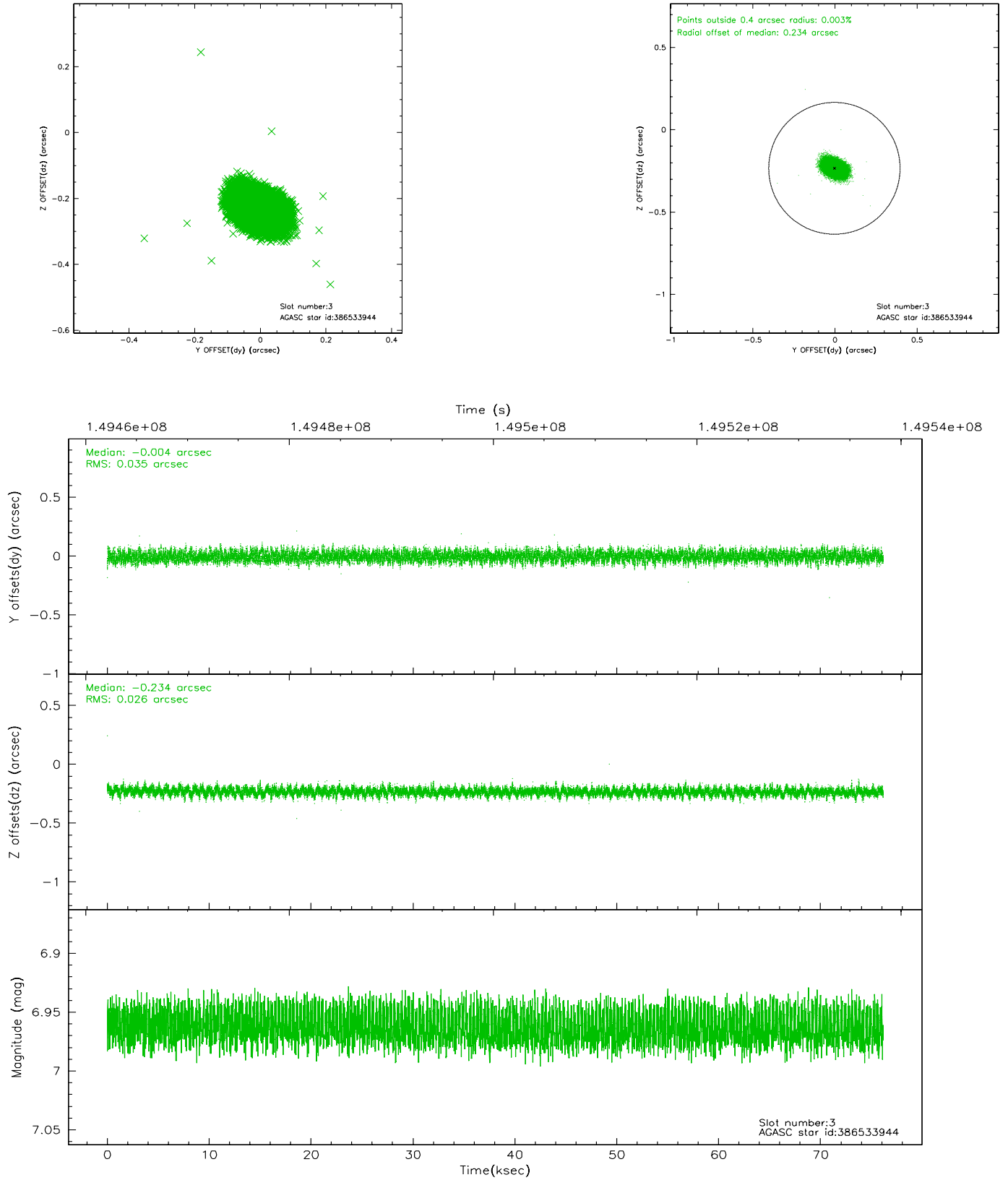


Slot Statistics

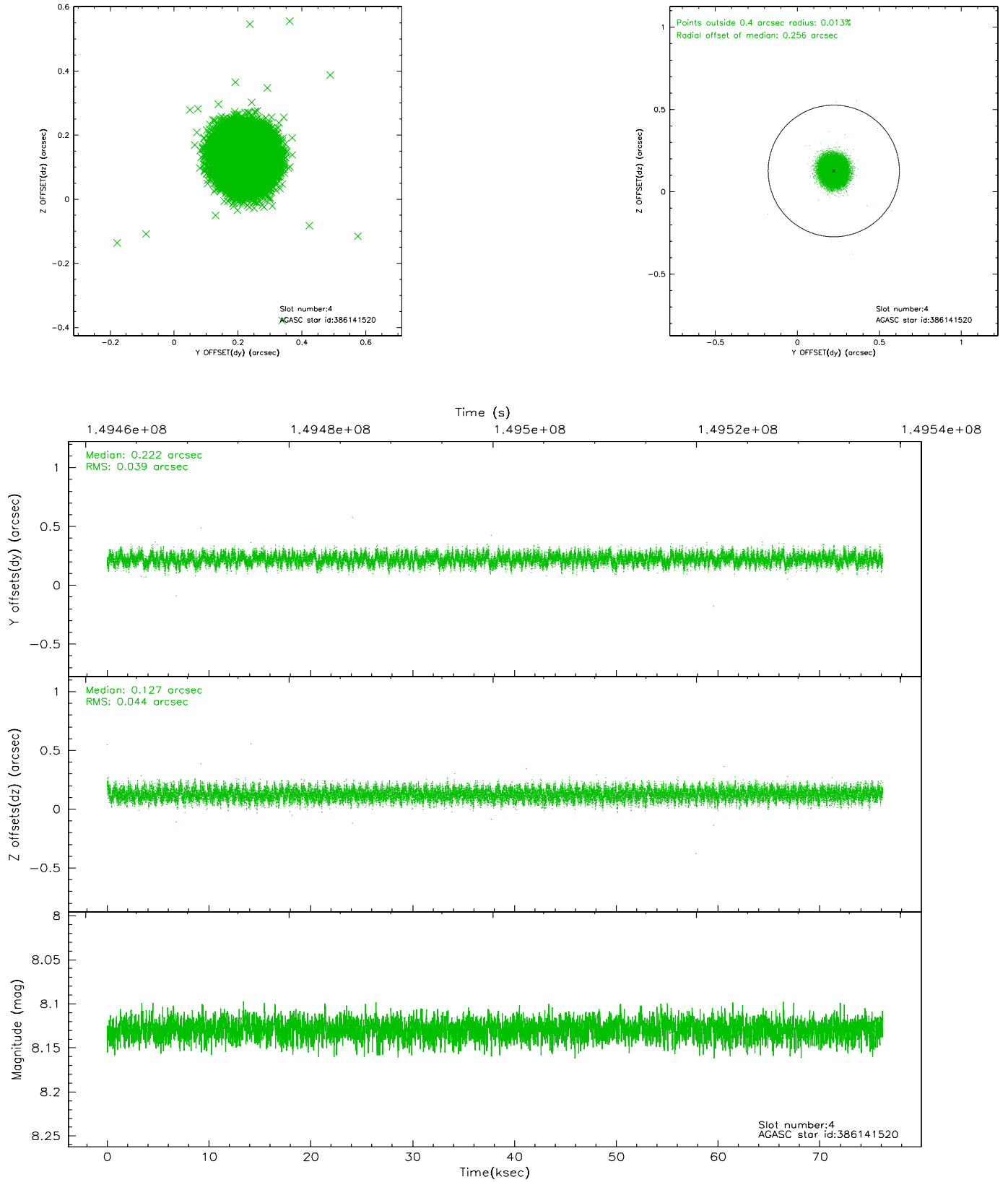
slot	status	id	mag	n_pts	med_dy	med_dz	dr1	dr2	ra	dec	mean_y	mean_z
0	FID	ACIS-S-2	7.11	18572	-0.005	0.011	0.007	0.011	0.000000	0.000000	-755.69	-1729.71
1	FID	ACIS-S-4	7.20	18572	-0.040	-0.000	0.005	0.009	0.000000	0.000000	2157.59	178.82
2	FID	ACIS-S-5	7.24	18575	0.014	-0.002	0.007	0.011	0.000000	0.000000	-1808.59	172.43
3	GUIDE	386533944	6.96	37146	-0.004	-0.234	0.046	0.077	102.090515	41.302324	-909.79	1634.68
4	GUIDE	386141520	8.13	37148	0.222	0.127	0.064	0.099	102.877152	40.867754	-2174.72	-689.71
5	GUIDE	386670528	8.75	37143	-0.283	0.115	0.066	0.105	103.273984	42.028946	2114.40	-1162.25
6	GUIDE	386017080	8.92	37137	0.150	-0.089	0.077	0.125	102.170213	41.066504	-1723.35	1310.56
7	GUIDE	386668624	9.36	37138	-0.079	0.082	0.100	0.168	103.154939	41.853600	1444.44	-936.41

2.4 Star Slots

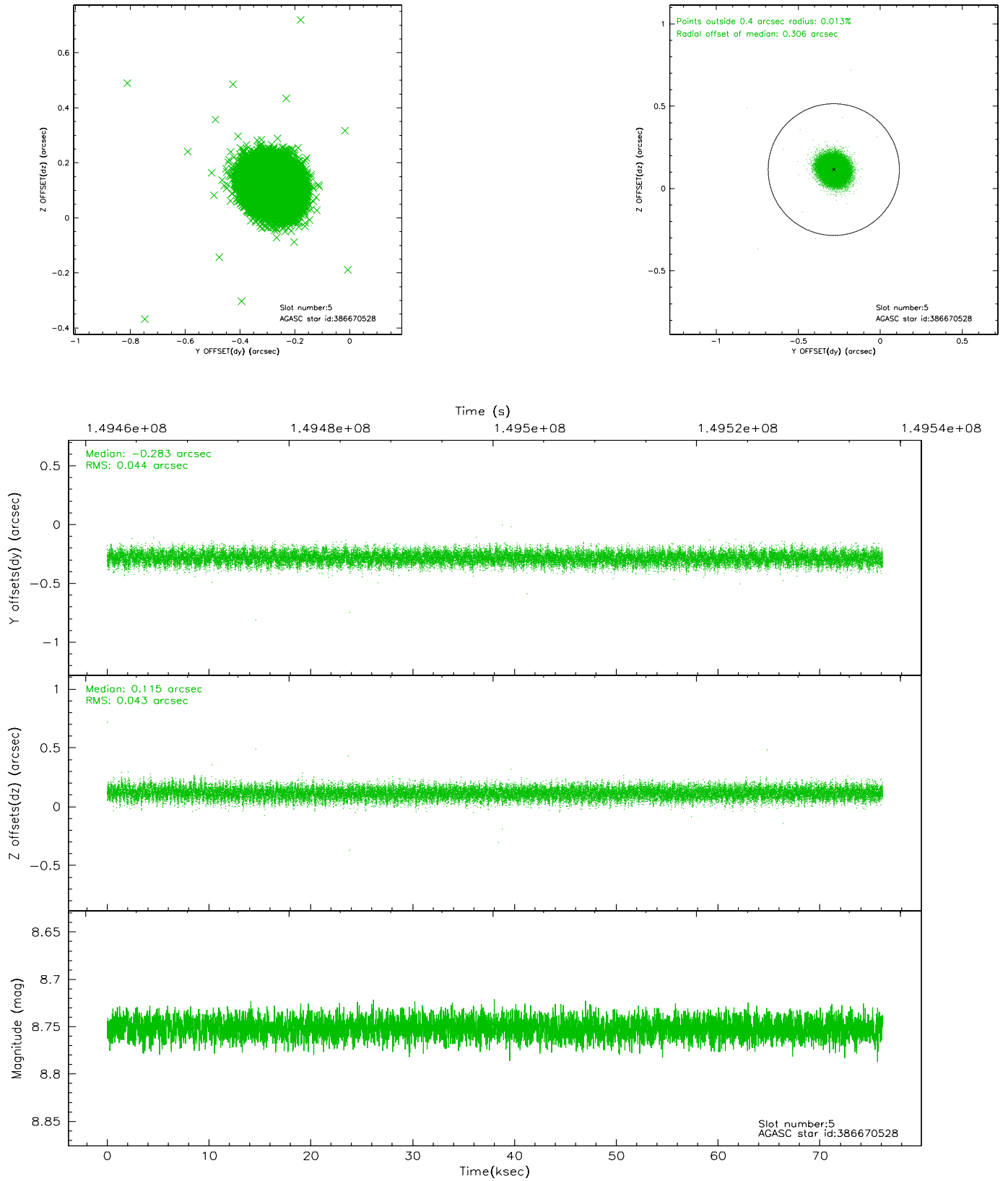
2.4.1 Slot 3



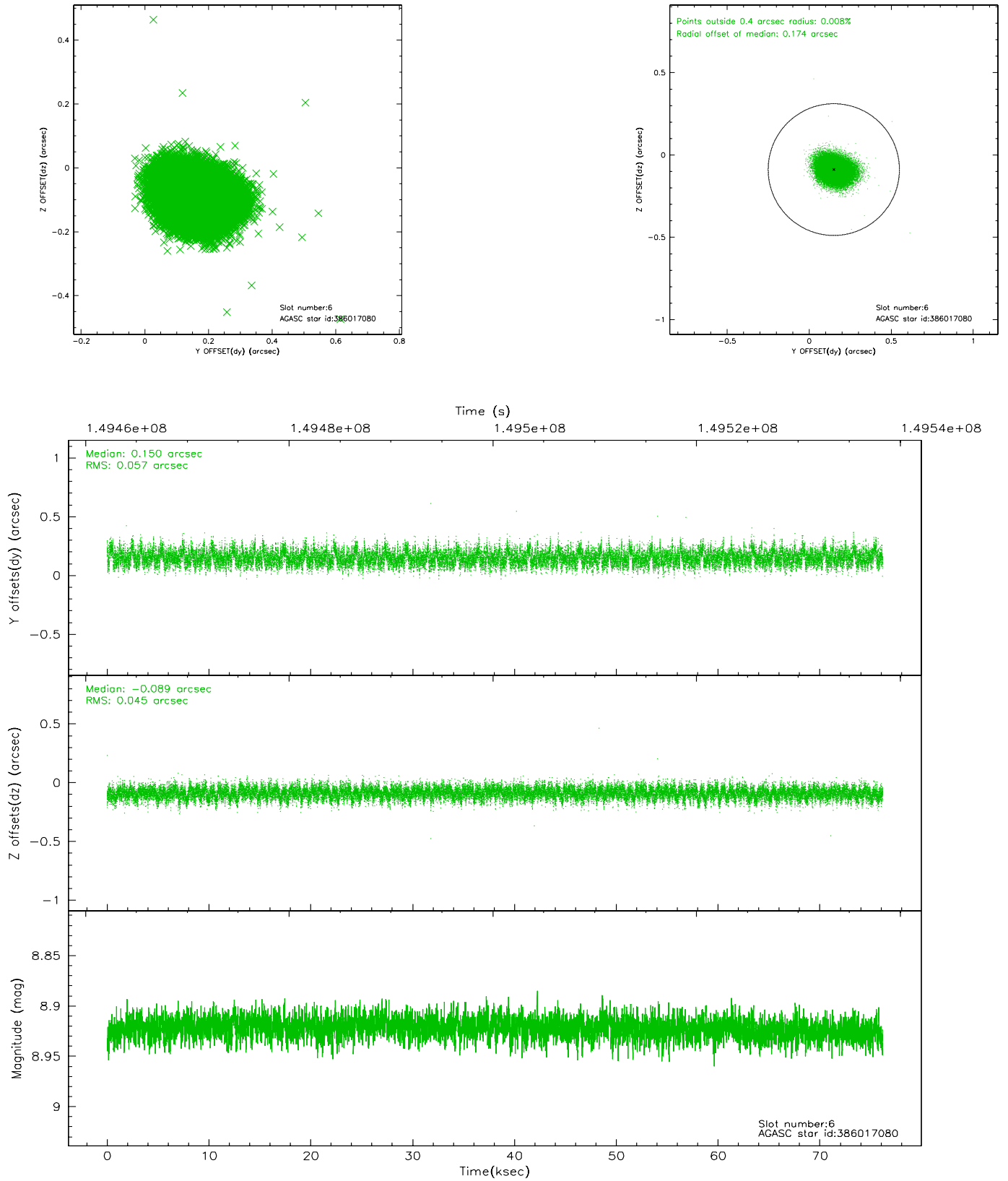
2.4.2 Slot 4



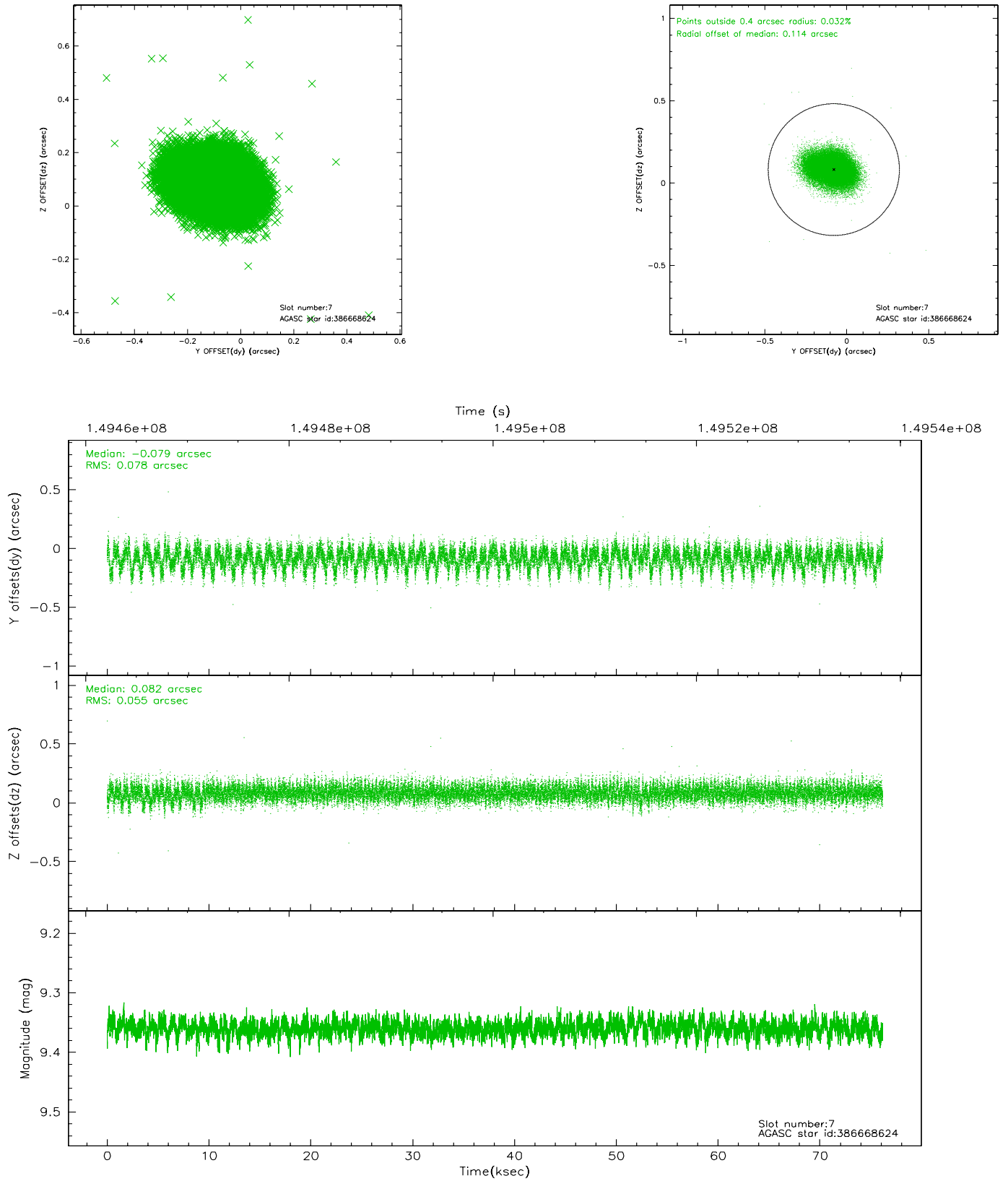
2.4.3 Slot 5



2.4.4 Slot 6

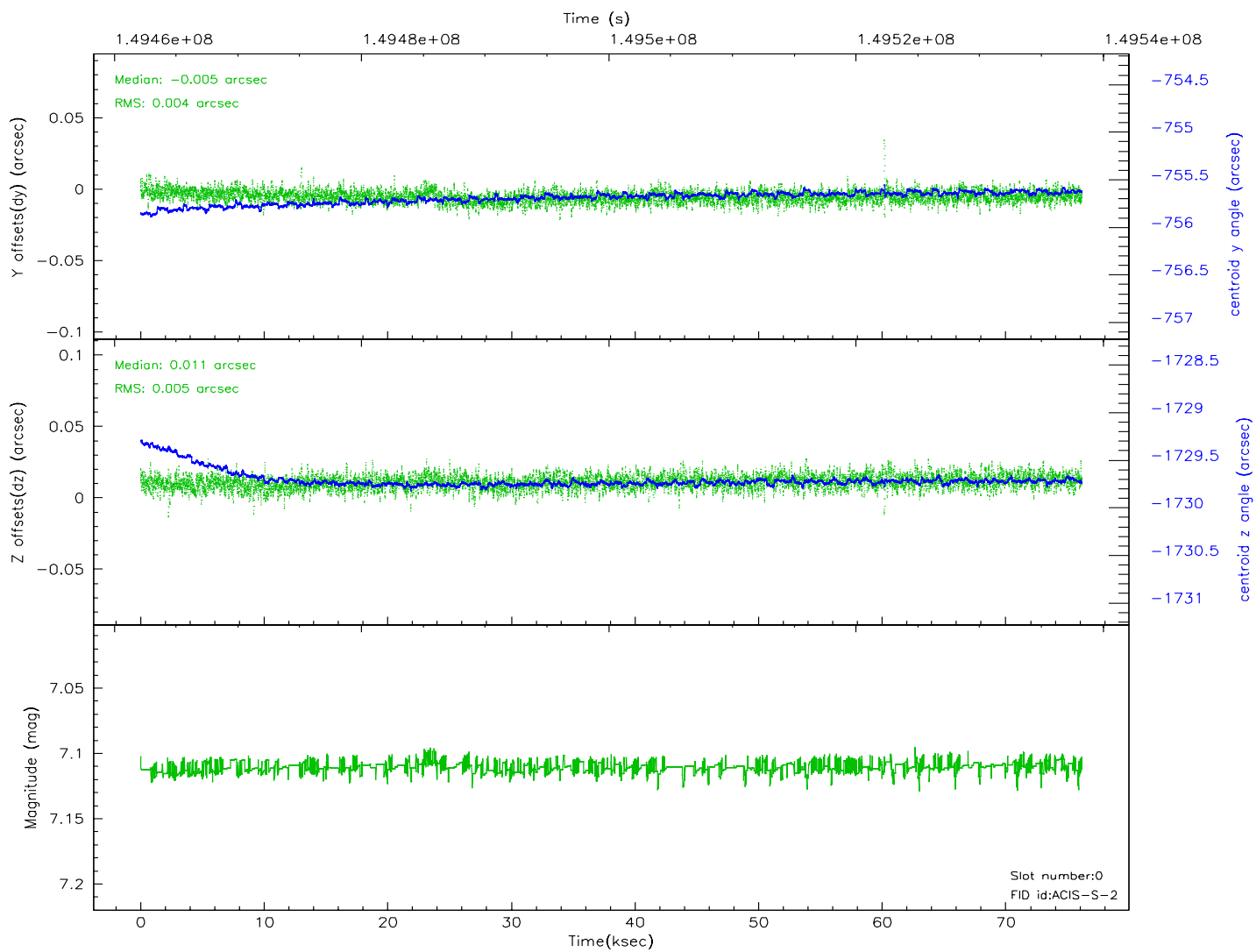
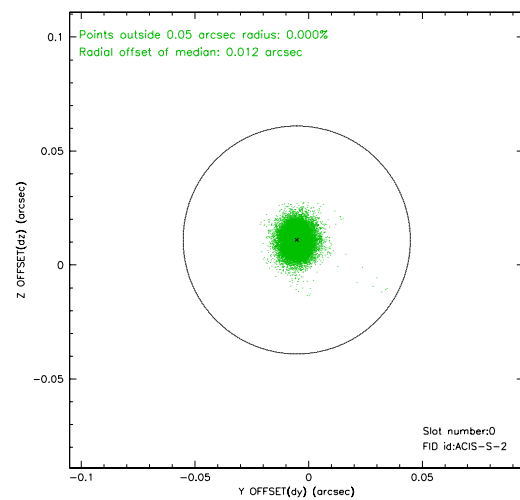
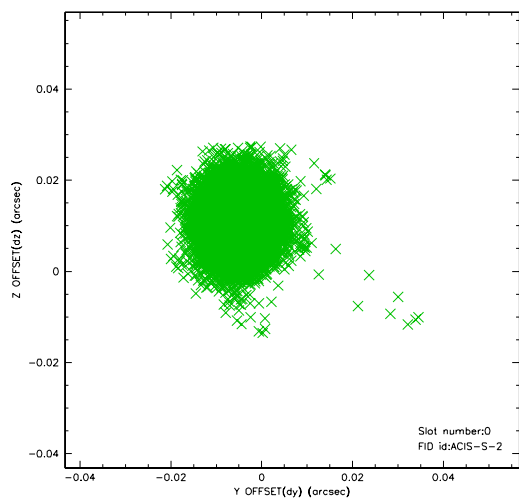


2.4.5 Slot 7

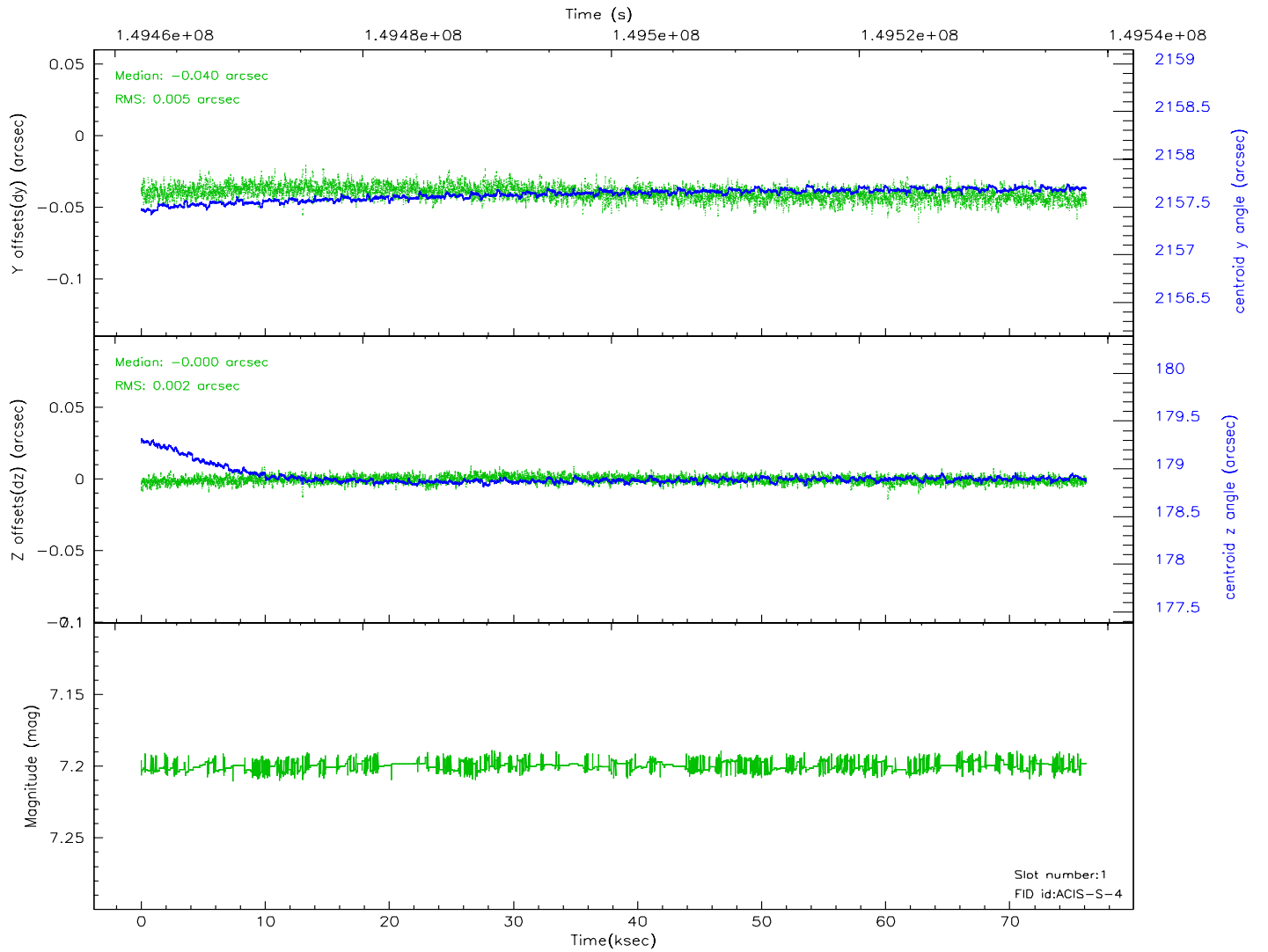
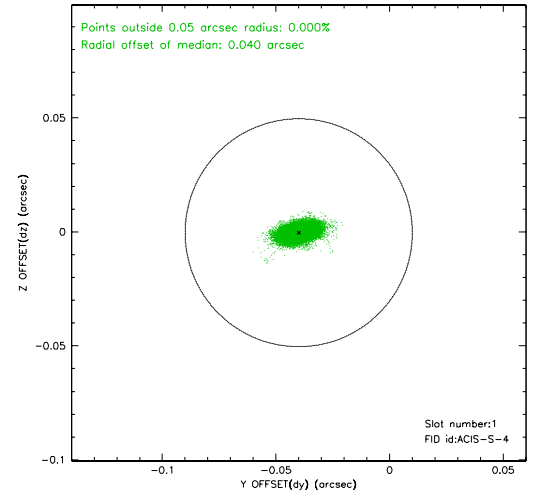
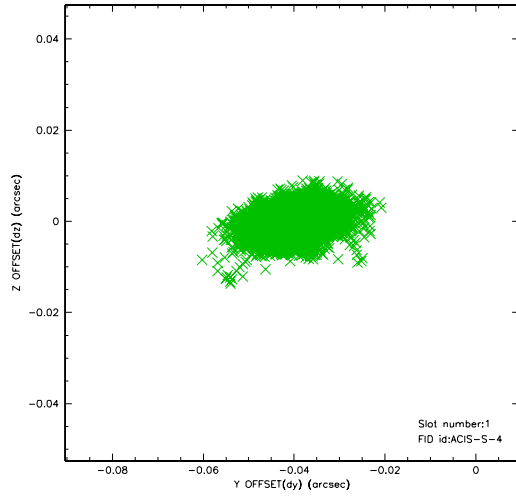


2.5 FID Slots

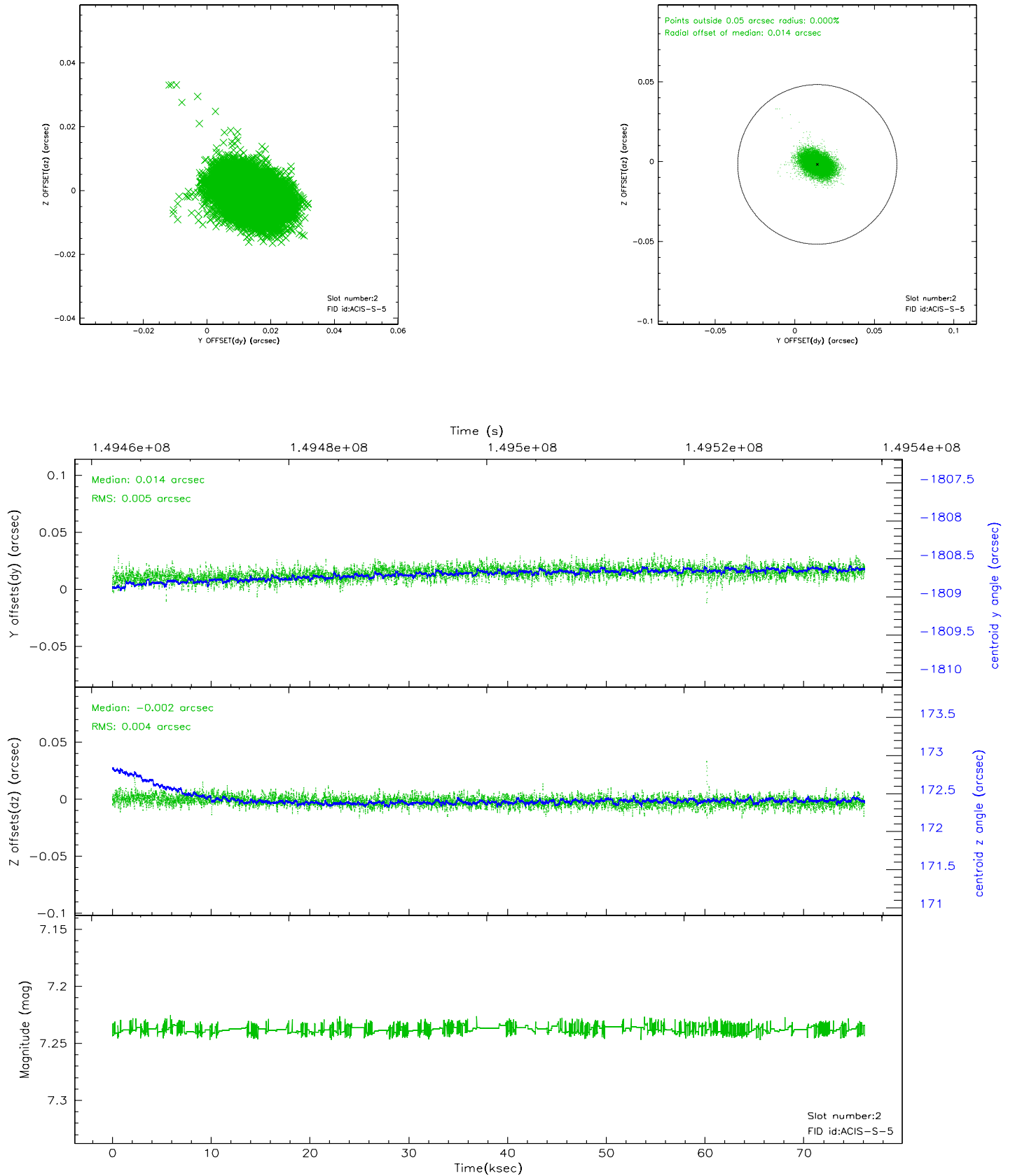
2.5.1 Slot 0



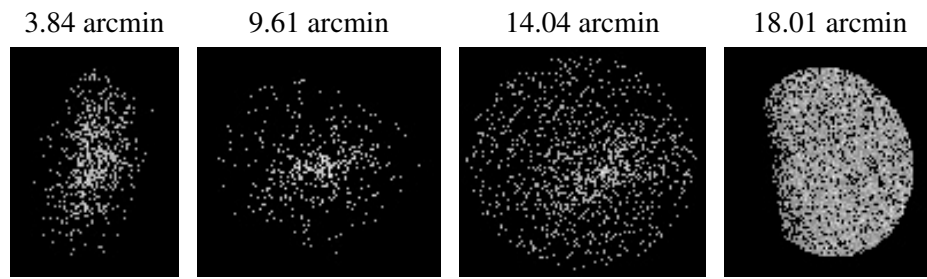
2.5.2 Slot 1



2.5.3 Slot 2



3 Point Sources



A Summary

A.1 Status

V&V Scientist	Jen Lauer
V&V Date (YYYY-MM-DD)	2006.10.06
V&V Edition	1
V&V Disposition and Status	OK
V&V Charge Time	75.103

A.2 Comments

Focal plane temperature is warmer than -118.7 C degrees during the first 5 ksec of this observation. The ACIS spectral response calibration for the front-illuminated chips is less accurate at these warmer temperatures than it is at -119.7 C. The back-illuminated chips are not affected at the focal plane temperatures recorded for this observation. Users whose science objectives depend on the most accurate spectral response (i.e.: fitting line-rich spectra) may notice an effect. Users whose science objectives do not depend on the most accurate spectral response should not notice an effect.