

# V&V Reference Report

## L2 ASCDS Version : 7.6.9

Observation 4369 - L2 Version 001  
Chandra X-Ray Center

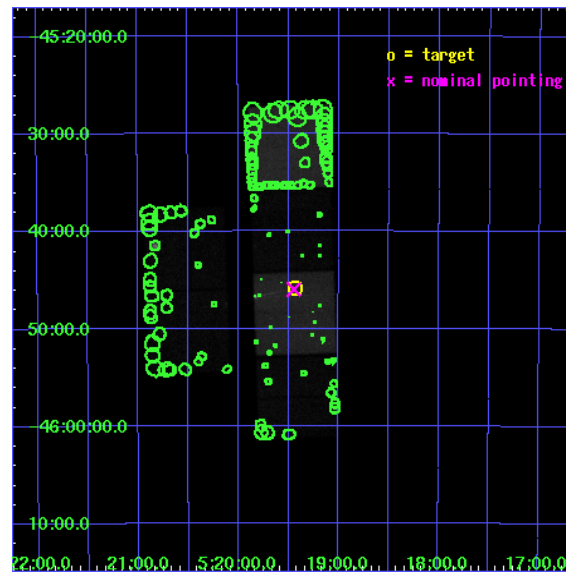
L2 Processing Date : Oct 4 2006

## Contents

<b>1</b>	<b>Front</b>	<b>2</b>
<b>2</b>	<b>OBI</b>	<b>3</b>
2.1	OBI . . . . .	3
2.1.1	Images . . . . .	3
2.1.2	Bias . . . . .	3
2.1.3	Parameters . . . . .	4
2.1.4	Events . . . . .	4
2.2	Compared Parameters . . . . .	5
2.3	Aspect . . . . .	6
2.4	Star Slots . . . . .	9
2.4.1	Slot 3 . . . . .	9
2.4.2	Slot 4 . . . . .	10
2.4.3	Slot 5 . . . . .	11
2.4.4	Slot 6 . . . . .	12
2.4.5	Slot 7 . . . . .	13
2.5	FID Slots . . . . .	14
2.5.1	Slot 0 . . . . .	14
2.5.2	Slot 1 . . . . .	15
2.5.3	Slot 2 . . . . .	16
<b>3</b>	<b>Point Sources</b>	<b>17</b>
<b>A</b>	<b>Summary</b>	<b>18</b>
A.1	Status . . . . .	18
A.2	Comments . . . . .	18

# 1 Front

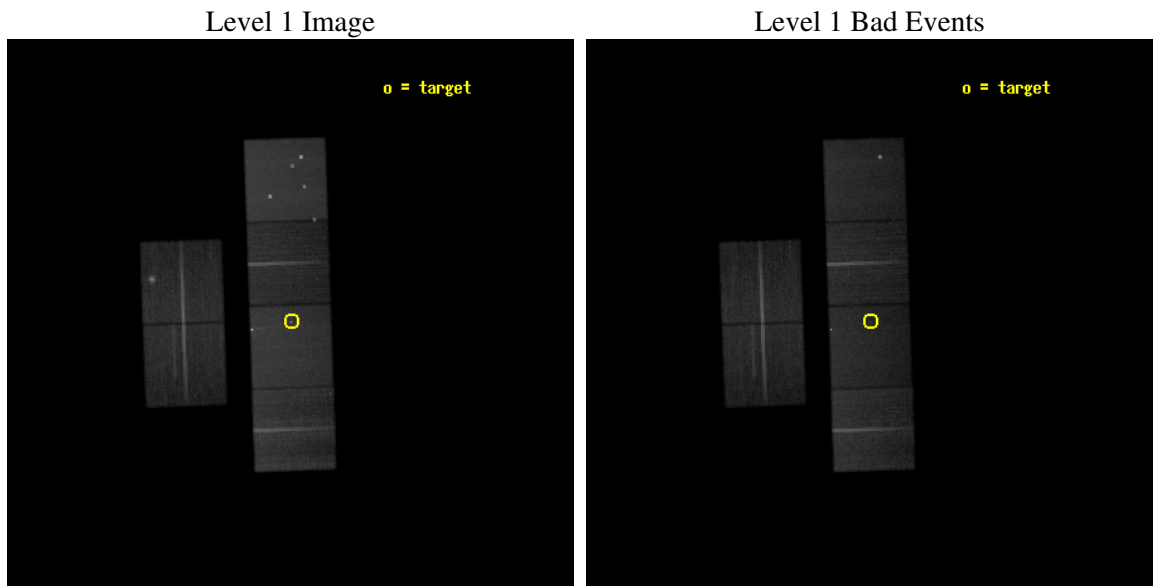
seq_num	700529
obs_id	4369
title	THE POWERFUL RADIO GALAXY PICTOR A
observer	Prof. Andrew Wilson
object	PICTOR A - WEST
dtcycle	0
cycle	P
ra_targ	79.859167
dec_targ	-45.764861
ra_nom	79.861500546125
dec_nom	-45.766426400426
roll_nom	88.058304533104
revision	2
ontime	49753.599814653
livetime	49123.589775779
ontime2	49753.599814653
ontime3	49753.599814653
ontime5	49753.599814653
ontime6	49753.599814653
ontime7	49753.599814653
ontime8	49753.599814653
l2events	517244



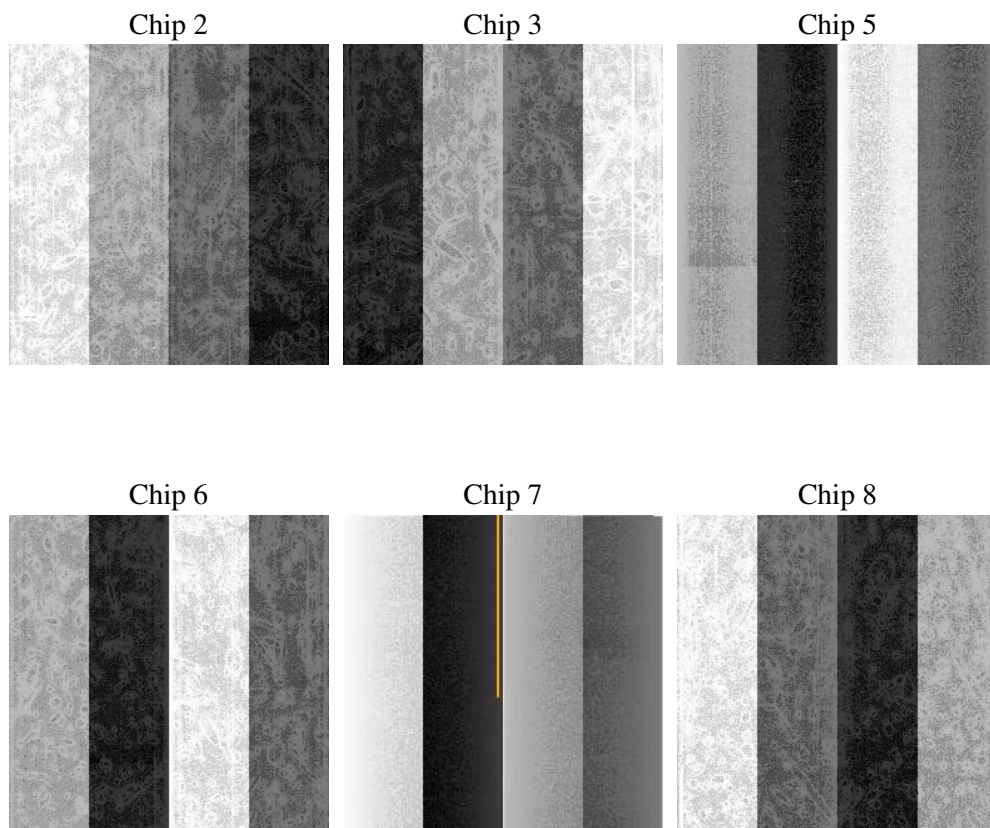
## 2 OBI

### 2.1 OBI

#### 2.1.1 Images



#### 2.1.2 Bias



### 2.1.3 Parameters

obi_num	0
ascdsver	7.6.9
caldbver	3.2.3
date	2006-10-04T19:02:42
revision	2

sched_exp_time	50000.000000
ontime	49759.108749241
ontime2	49759.108749241
ontime3	49759.108749241
ontime5	49759.108769149
ontime6	49759.108749241
ontime7	49759.108749241
ontime8	49759.108639657
l1events	2249187

### 2.1.4 Events

	ccd 2	ccd 3	ccd 5	ccd 6	ccd 7	ccd 8
level 1 events	322810	296976	471597	310039	453135	394630
rejected events	279445	261603	255602	273718	256221	313636
rejected %	86%	88%	54%	88%	56%	79%

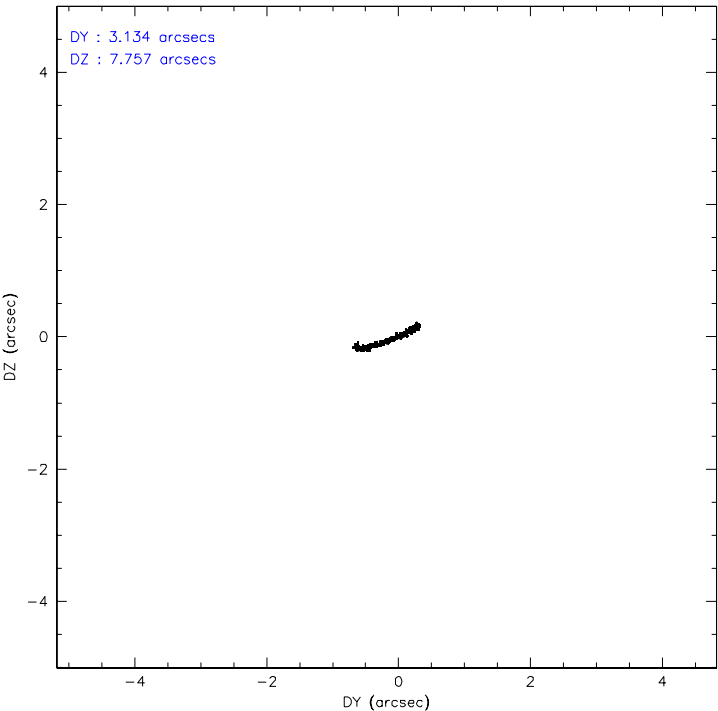
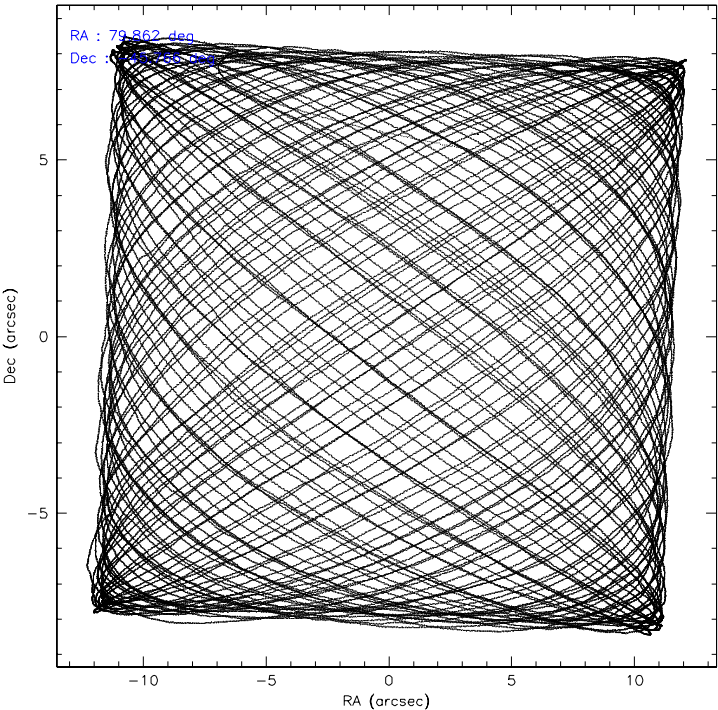
	ccd 2	ccd 3	ccd 5	ccd 6	ccd 7	ccd 8
grade 0 events	22145	15672	28601	14808	18389	25633
	6%	5%	6%	4%	4%	6%
grade 1 events	208	168	377	141	802	247
	0%	0%	0%	0%	0%	0%
grade 2 events	8006	6603	63313	7410	49698	17329
	2%	2%	13%	2%	10%	4%
grade 3 events	3544	3562	5848	3477	12341	8805
	1%	1%	1%	1%	2%	2%
grade 4 events	3657	3548	4309	3543	11763	8278
	1%	1%	0%	1%	2%	2%
grade 5 events	11967	12929	24212	13881	29210	17994
	3%	4%	5%	4%	6%	4%
grade 6 events	6016	5989	113936	7086	104735	20961
	1%	2%	24%	2%	23%	5%
grade 7 events	267267	248505	231001	259693	226197	295383
	82%	83%	48%	83%	49%	74%

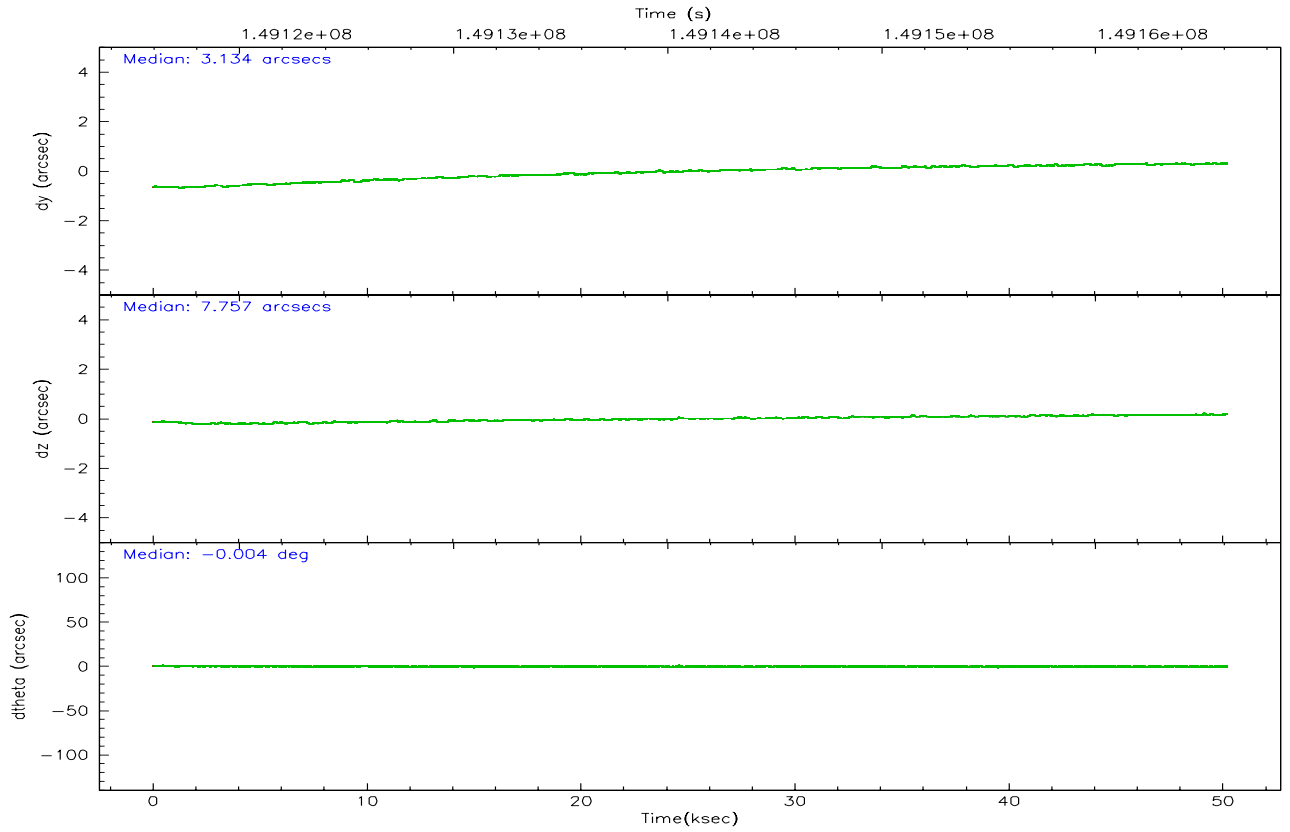
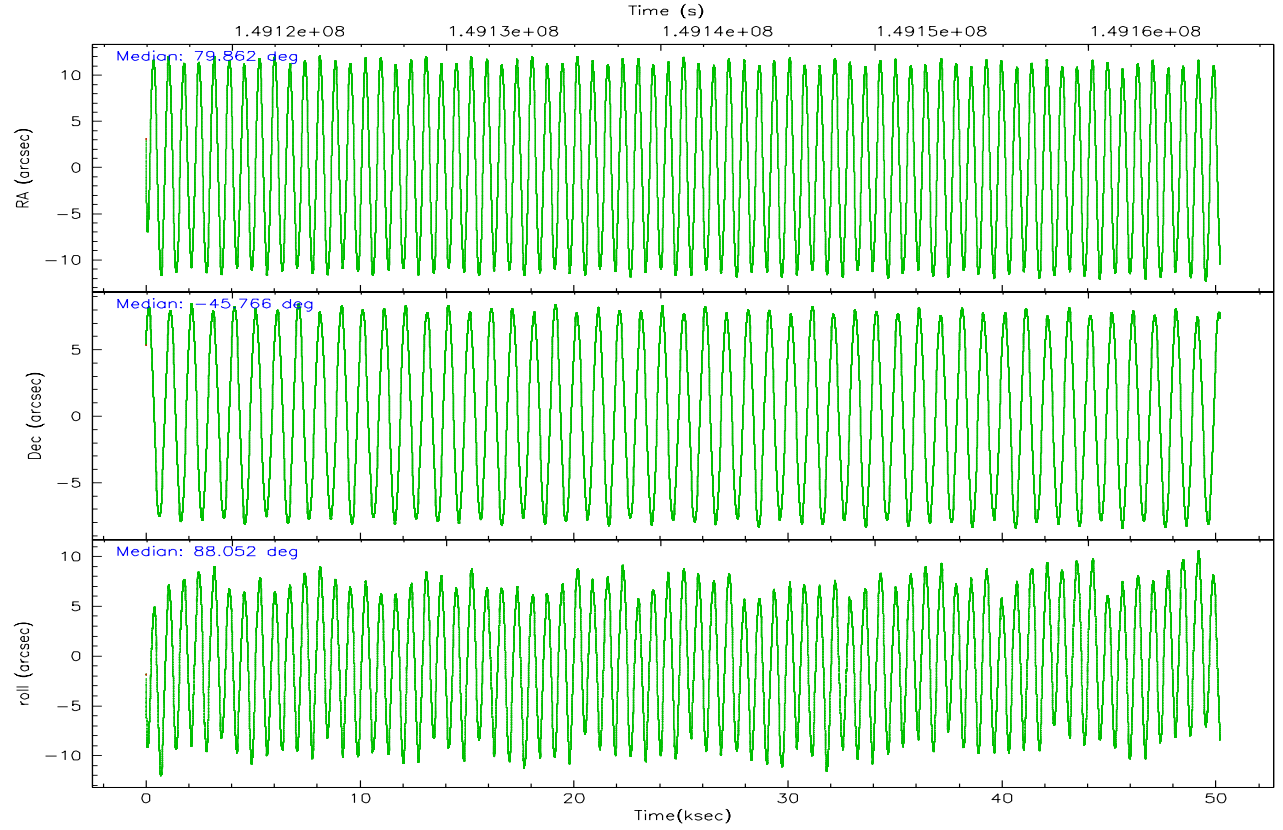


## 2.2 Compared Parameters

Parameter	Planned	Actual	Parameter	Planned	Actual
Instrument	ACIS	ACIS	Obspar format version number	6	6
Detector	ACIS-235678	ACIS-235678	Obspar file type	PREDICTED	ACTUAL
Grating	NONE	NONE	Obspar update status	NONE	UPDATED
Data mode	FAINT	FAINT	Number of optional ACIS chips dropped	0	0
Observation mode	POINTING	POINTING	On-chip summing requested	N	N
Pointing RA	79.880313	79.86150054612506	Subarray requested	NONE	NONE
Pointing Dec	-45.790300	-45.76642640042603	Alternating exposures requested	N	N
Pointing Roll	87.915161	88.05830453310435	Primary exposure time	0.000000	3.2
SIM focus pos (mm)	-0.684267	-0.6828225247311905			
SIM defocus (mm)	0	0.001444936568705701			
SIM translation stage pos (mm)	-190.132523	-190.1400660498719			
SIM translation stage offset (mm)	0	0.00754346686406393			
Observation start time	149116133.184000	149115287.03243			
Observation start date	2002-09-22T21:07:49	2002-09-22T20:54:47			
Observation end time	149166133.184000	149166798.92206			
Observation end date	2002-09-23T11:01:09	2002-09-23T11:13:18			
Read mode	TIMED	TIMED			

2.3 Aspect



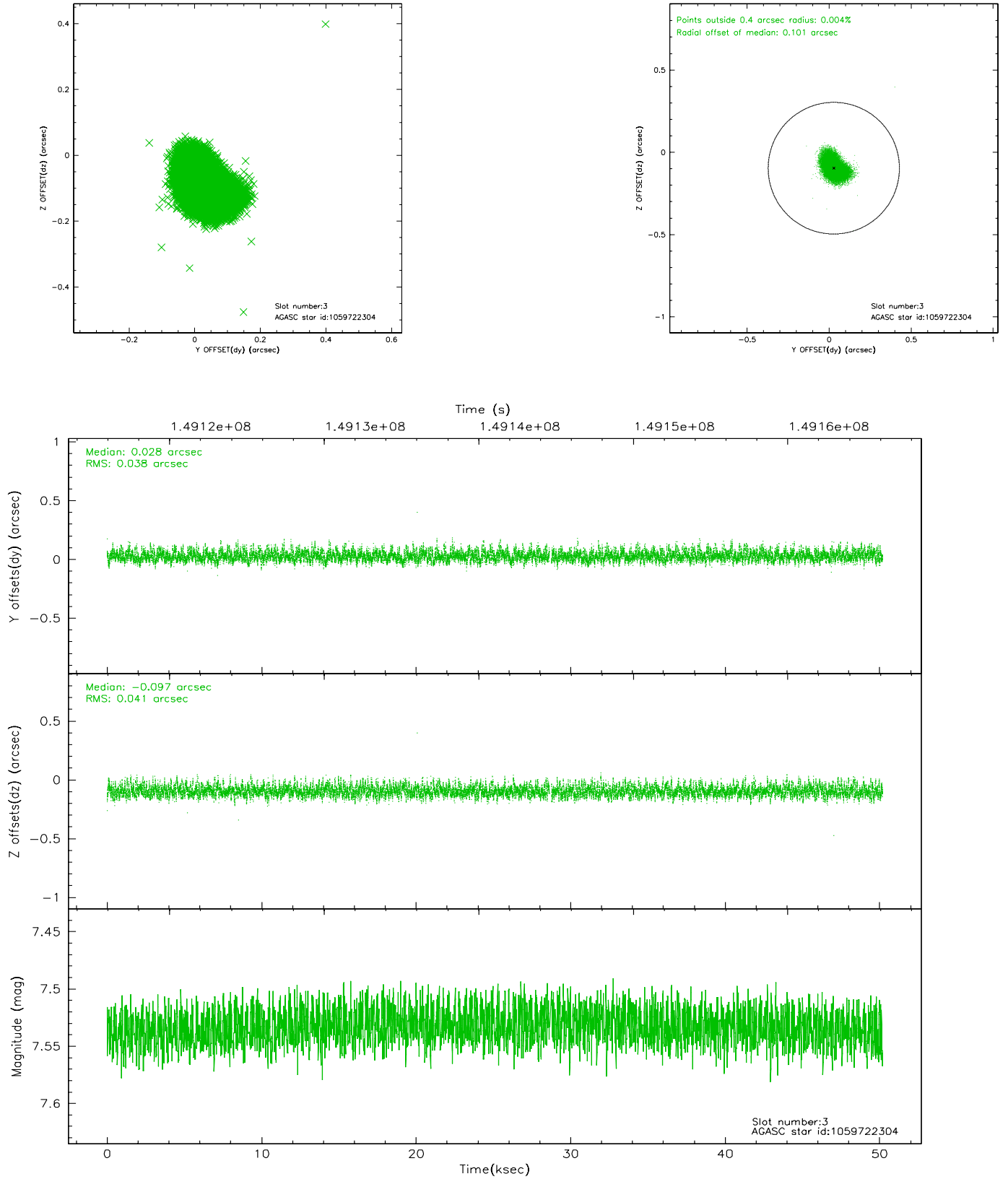


### Slot Statistics

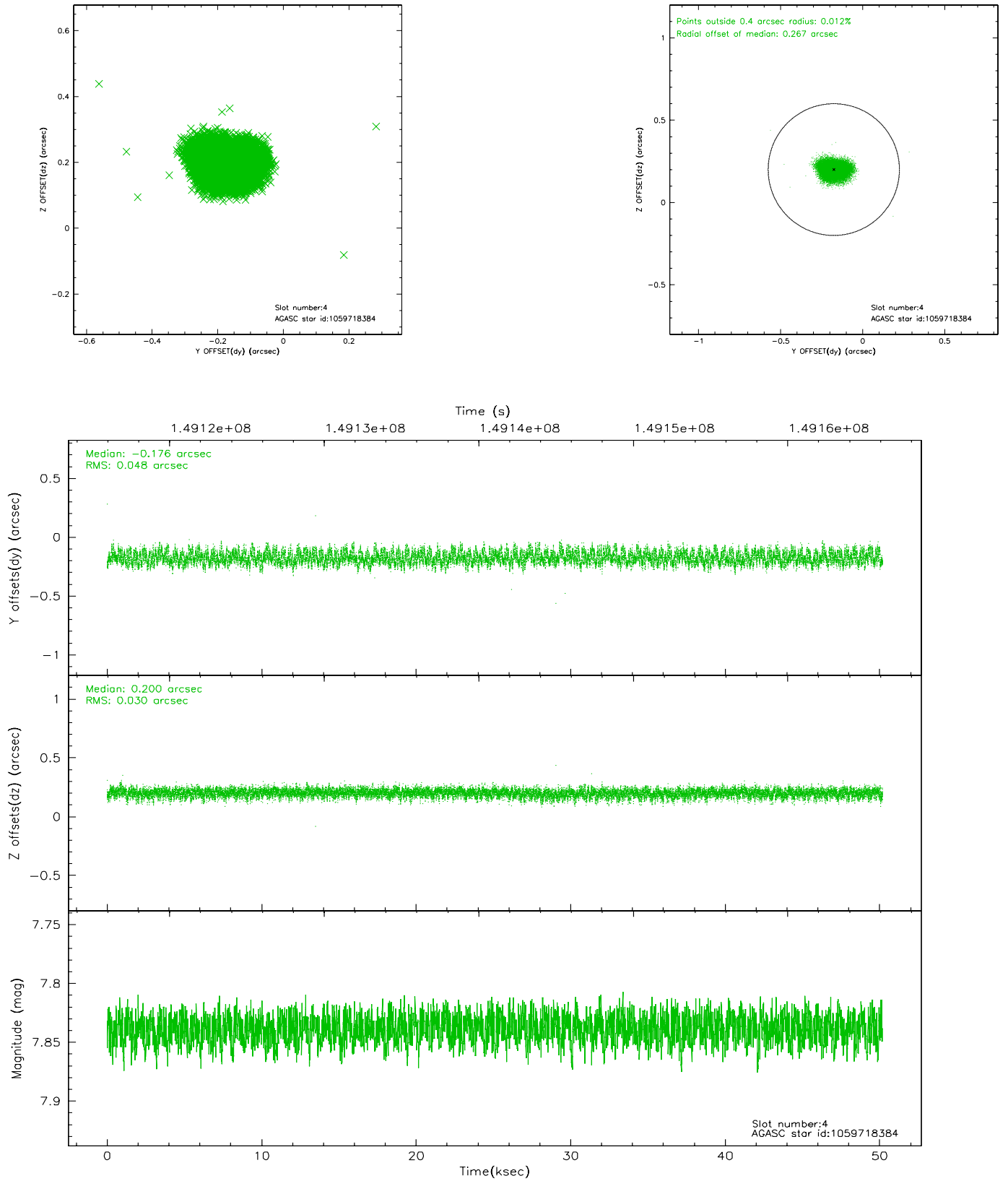
slot	status	id	mag	n_pts	med_dy	med_dz	dr1	dr2	ra	dec	mean_y	mean_z
0	FID	ACIS-S-2	7.12	12243	0.001	0.019	0.008	0.013	0.000000	0.000000	-755.72	-1728.91
1	FID	ACIS-S-4	7.20	12242	-0.050	-0.006	0.014	0.025	0.000000	0.000000	2157.52	179.54
2	FID	ACIS-S-5	7.24	12243	0.018	-0.005	0.016	0.028	0.000000	0.000000	-1808.56	173.22
3	GUIDE	1059722304	7.53	24421	0.028	-0.097	0.058	0.097	79.157586	-45.913736	-518.34	1792.94
4	GUIDE	1059718384	7.84	24485	-0.176	0.200	0.060	0.097	80.663676	-45.411103	1426.61	-1928.15
5	GUIDE	1059724224	9.24	24467	-0.161	-0.016	0.098	0.159	79.882936	-45.125709	2391.01	81.11
6	GUIDE	1059722088	9.55	24472	0.106	0.025	0.086	0.139	80.609257	-46.439911	-2279.21	-1892.25
7	GUIDE	1059725056	9.58	24476	0.198	-0.116	0.118	0.190	79.204255	-46.412186	-2305.56	1595.43

## 2.4 Star Slots

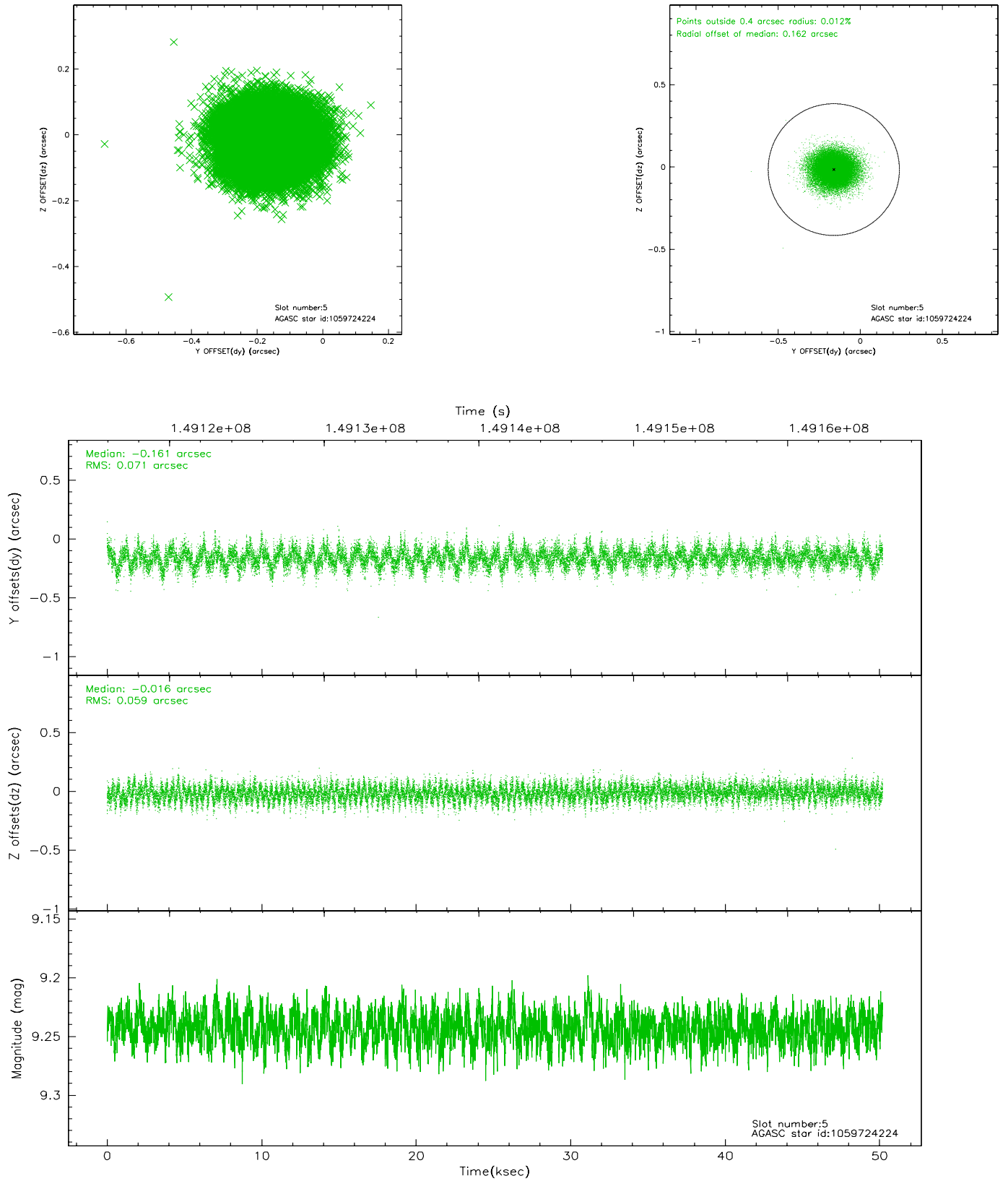
### 2.4.1 Slot 3



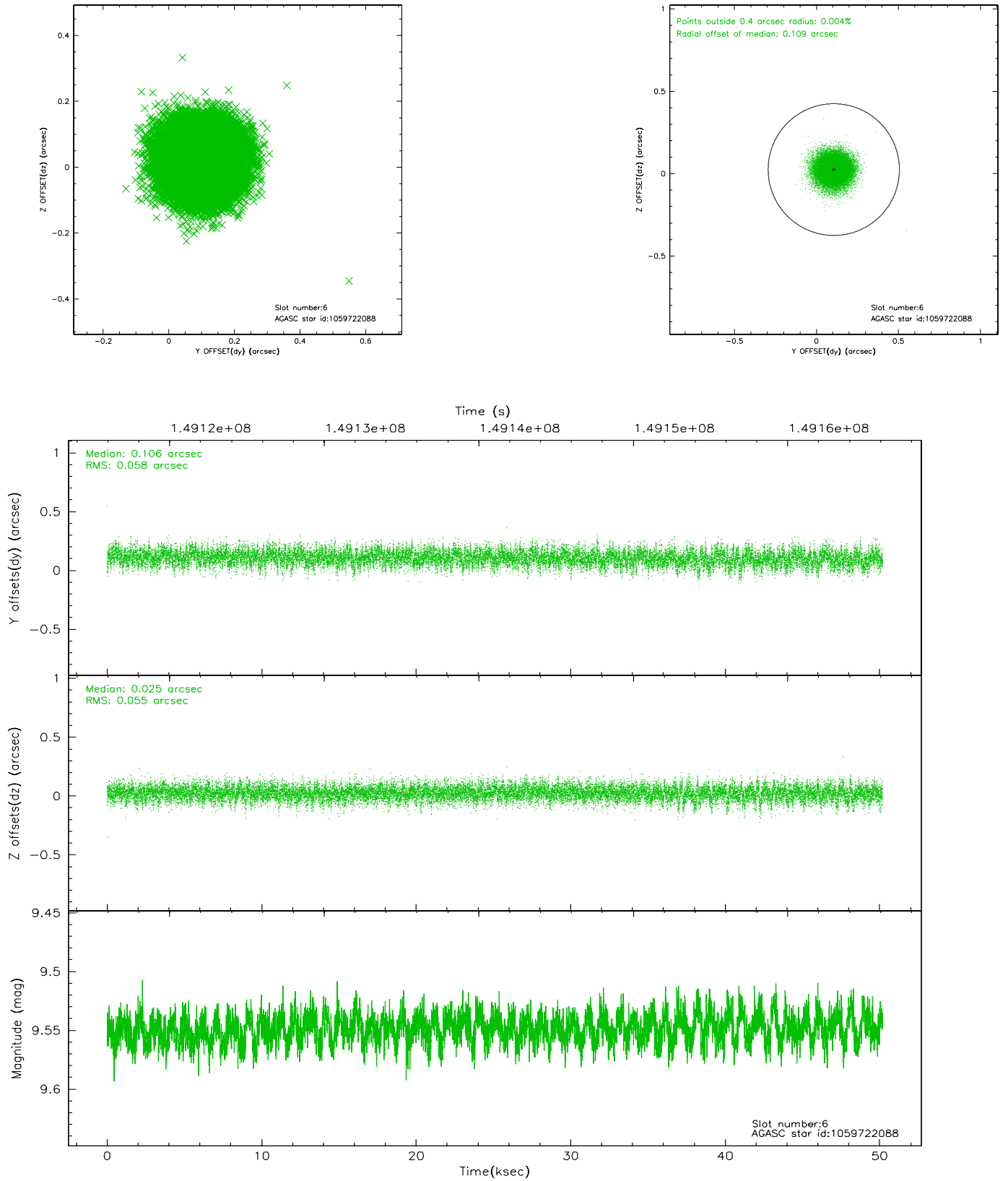
## 2.4.2 Slot 4



### 2.4.3 Slot 5

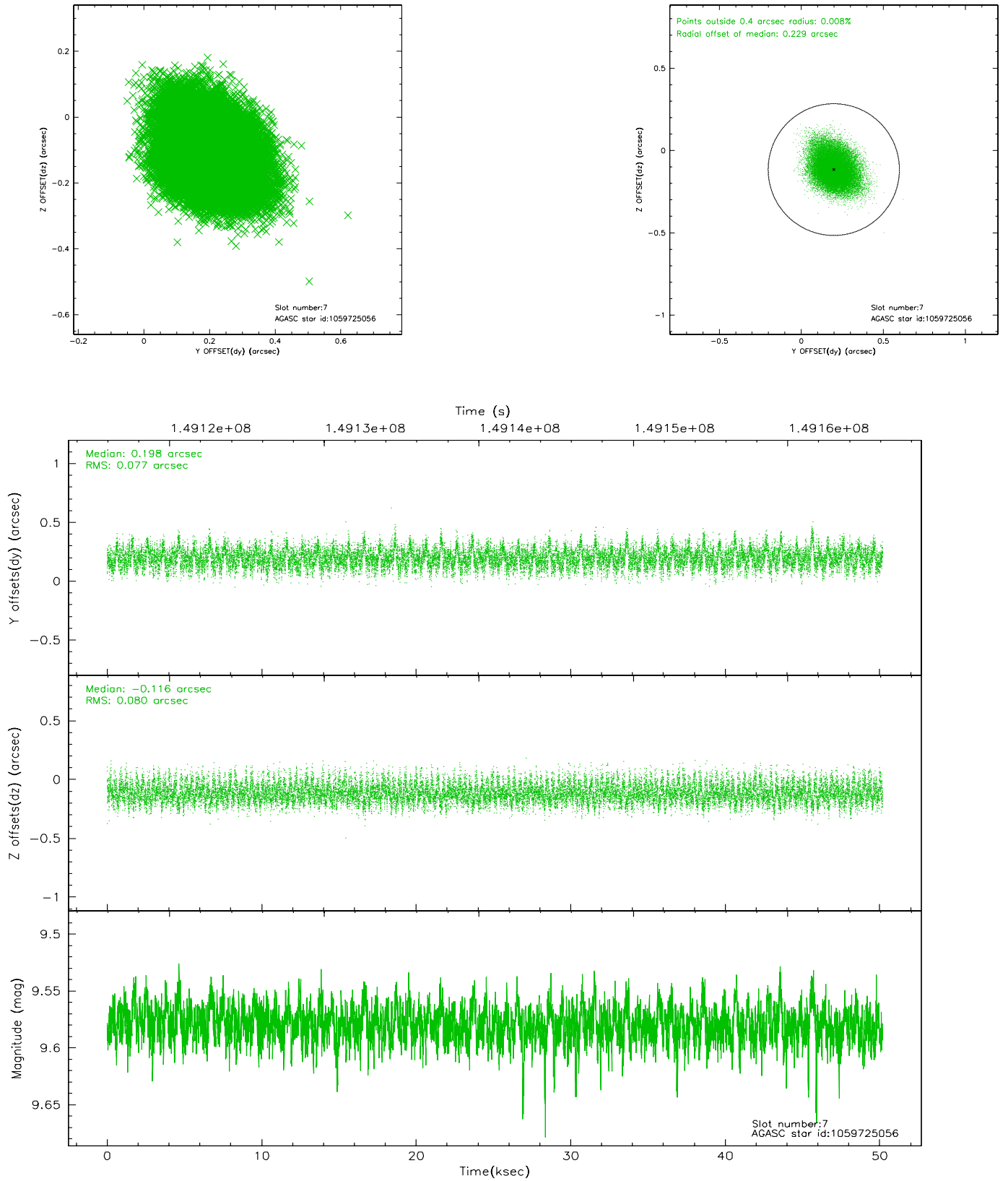


## 2.4.4 Slot 6



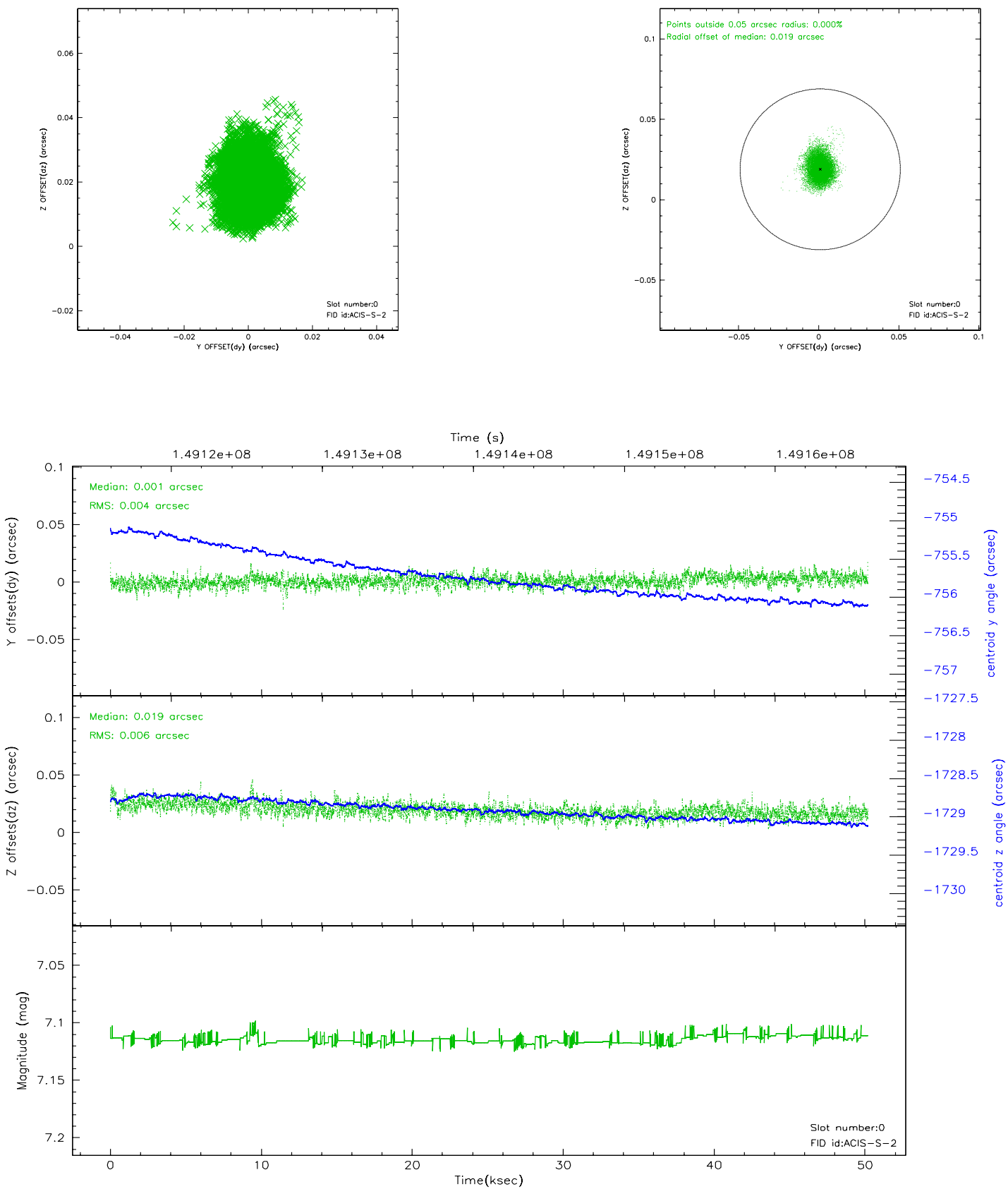


## 2.4.5 Slot 7

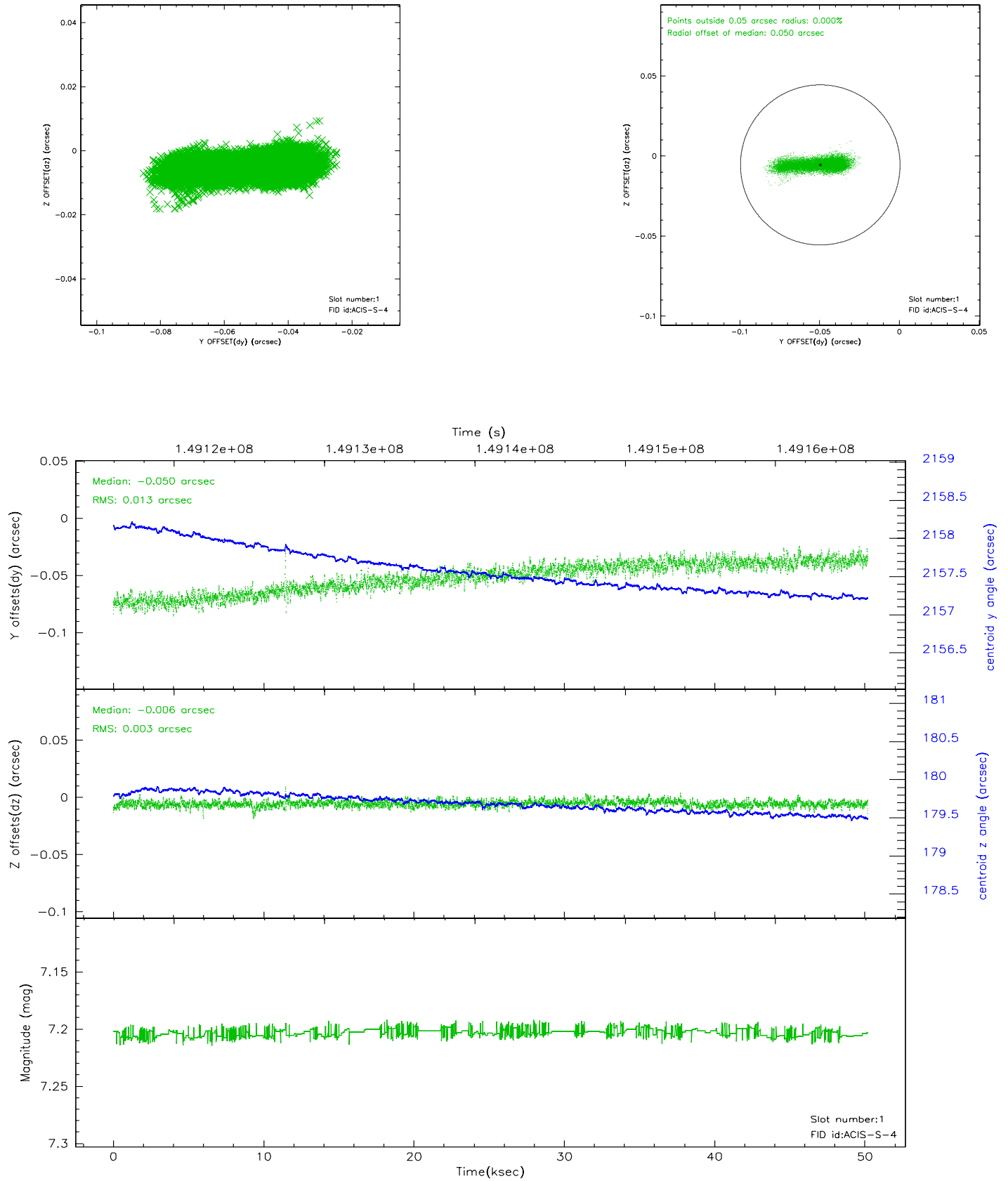


## 2.5 FID Slots

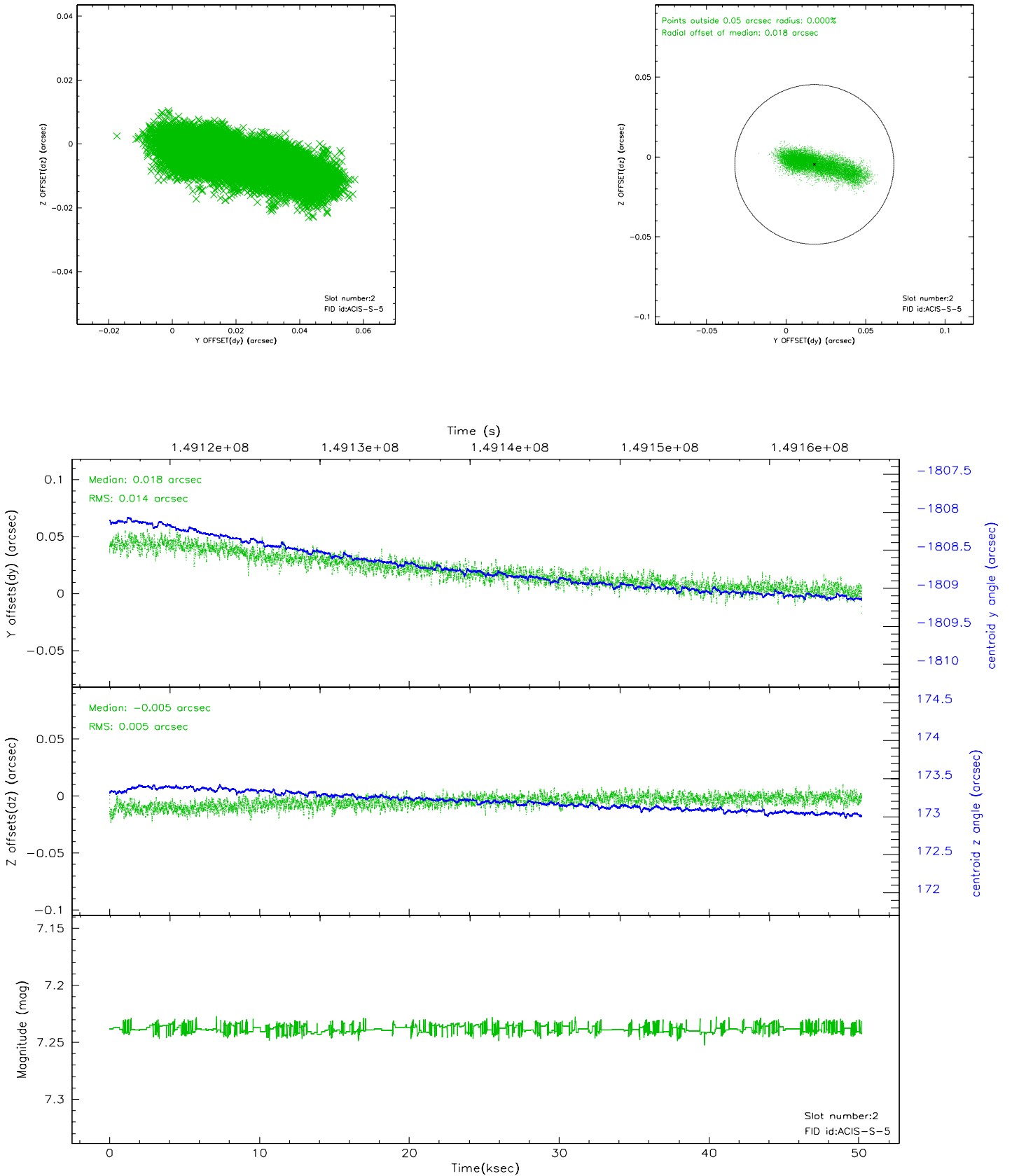
### 2.5.1 Slot 0



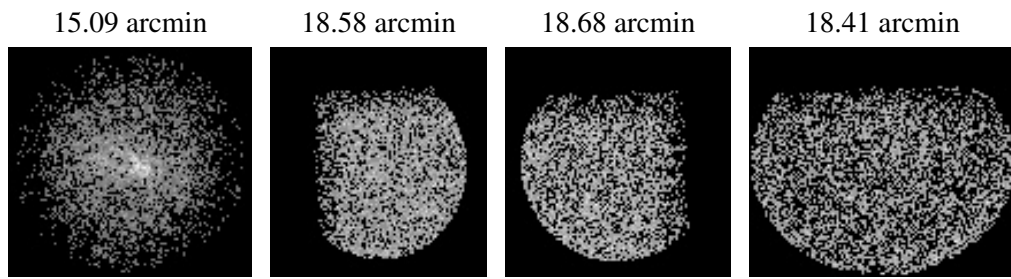
## 2.5.2 Slot 1



### 2.5.3 Slot 2



### 3 Point Sources



## A Summary

### A.1 Status

V&V Scientist	Jen Lauer
V&V Date (YYYY-MM-DD)	2006.10.05
V&V Edition	1
V&V Disposition and Status	OK
V&V Charge Time	49.756

### A.2 Comments