

# V&V Reference Report

## L2 ASCDS Version : 7.6.8

Observation 4219 - L2 Version 001  
Chandra X-Ray Center

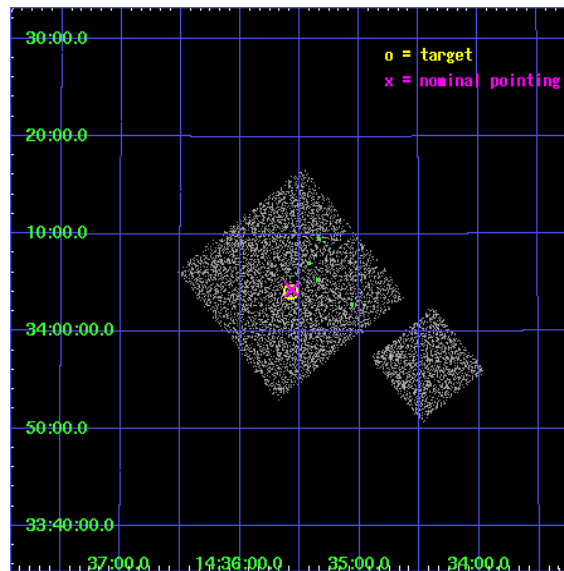
L2 Processing Date : Jul 30 2006

## Contents

<b>1</b>	<b>Front</b>	<b>2</b>
<b>2</b>	<b>OBI</b>	<b>3</b>
2.1	OBI . . . . .	3
2.1.1	Images . . . . .	3
2.1.2	Bias . . . . .	3
2.1.3	Parameters . . . . .	4
2.1.4	Events . . . . .	4
2.2	Compared Parameters . . . . .	5
2.3	Aspect . . . . .	6
2.4	Star Slots . . . . .	9
2.4.1	Slot 3 . . . . .	9
2.4.2	Slot 4 . . . . .	10
2.4.3	Slot 5 . . . . .	11
2.4.4	Slot 6 . . . . .	12
2.4.5	Slot 7 . . . . .	13
2.5	FID Slots . . . . .	14
2.5.1	Slot 0 . . . . .	14
2.5.2	Slot 1 . . . . .	15
2.5.3	Slot 2 . . . . .	16
<b>3</b>	<b>Point Sources</b>	<b>17</b>
<b>A</b>	<b>Summary</b>	<b>18</b>
A.1	Status . . . . .	18
A.2	Comments . . . . .	18

# 1 Front

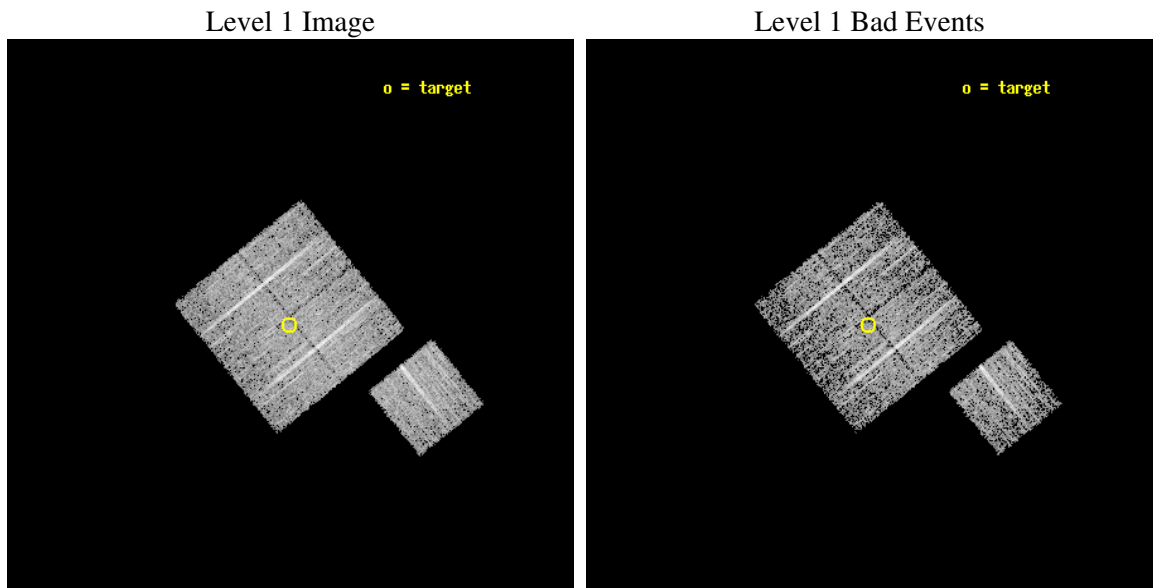
seq_num	900262
obs_id	4219
title	A CHANDRA WIDE-FIELD SURVEY TO MAP THE COSMIC WEB AND INVESTIGATE THE EVOLUTION OF NUCLEAR ACCRETION
observer	Dr. Christine Jones
object	SS34
dtcycle	0
cycle	P
ra_targ	218.893848
dec_targ	34.068
ra_nom	218.89122249219
dec_nom	34.072117854595
roll_nom	141.01016403128
revision	2
ontime	4777.0999908149
livetime	4714.6836625851
ontime0	4777.0999908149
ontime1	4777.0999908149
ontime2	4770.8180303574
ontime3	4777.0999908149
ontime6	4777.0999908149
l2events	9630



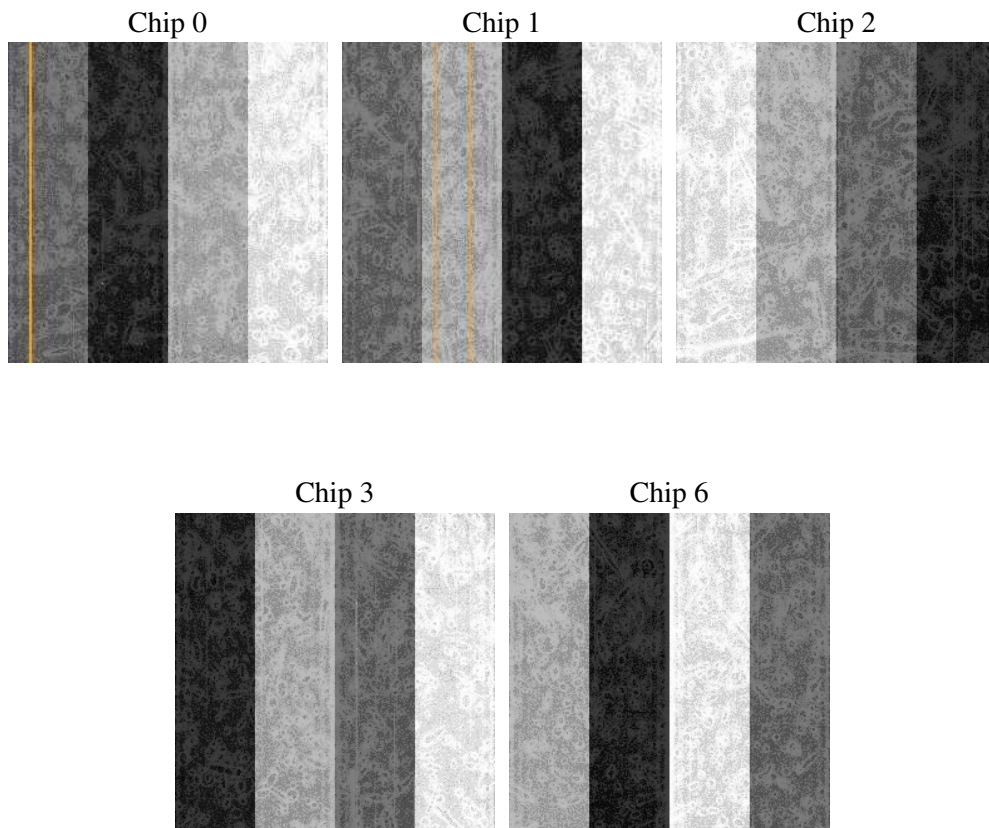
## 2 OBI

### 2.1 OBI

#### 2.1.1 Images



#### 2.1.2 Bias



### 2.1.3 Parameters

obi_num	1
ascdsver	7.6.8
caldbver	3.2.2
date	2006-07-30T02:22:39
revision	2

sched_exp_time	5000.000000
ontime	4780.6138116717
ontime0	4780.6138315797
ontime1	4780.6138116717
ontime2	4774.3318711221
ontime3	4780.6138116717
ontime6	4780.6138315797
l1events	121713

### 2.1.4 Events

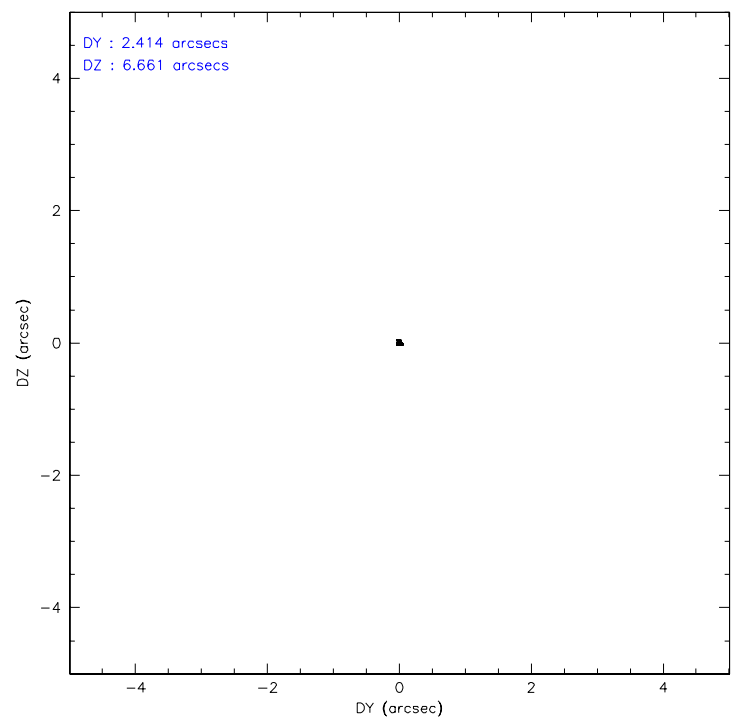
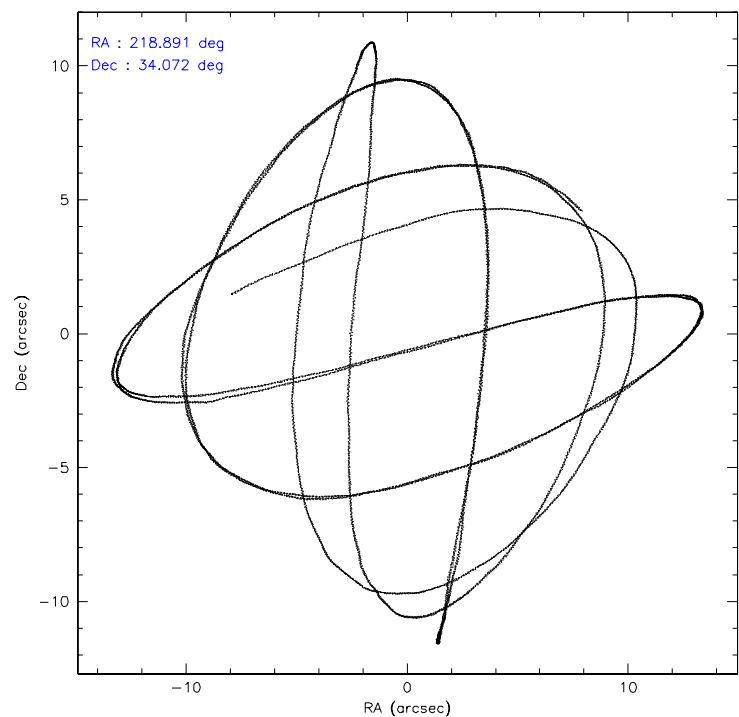
	ccd 0	ccd 1	ccd 2	ccd 3	ccd 6
level 1 events	23446	23087	26118	23951	25111
rejected events	20964	20653	23807	21723	22670
rejected %	89%	89%	91%	90%	90%

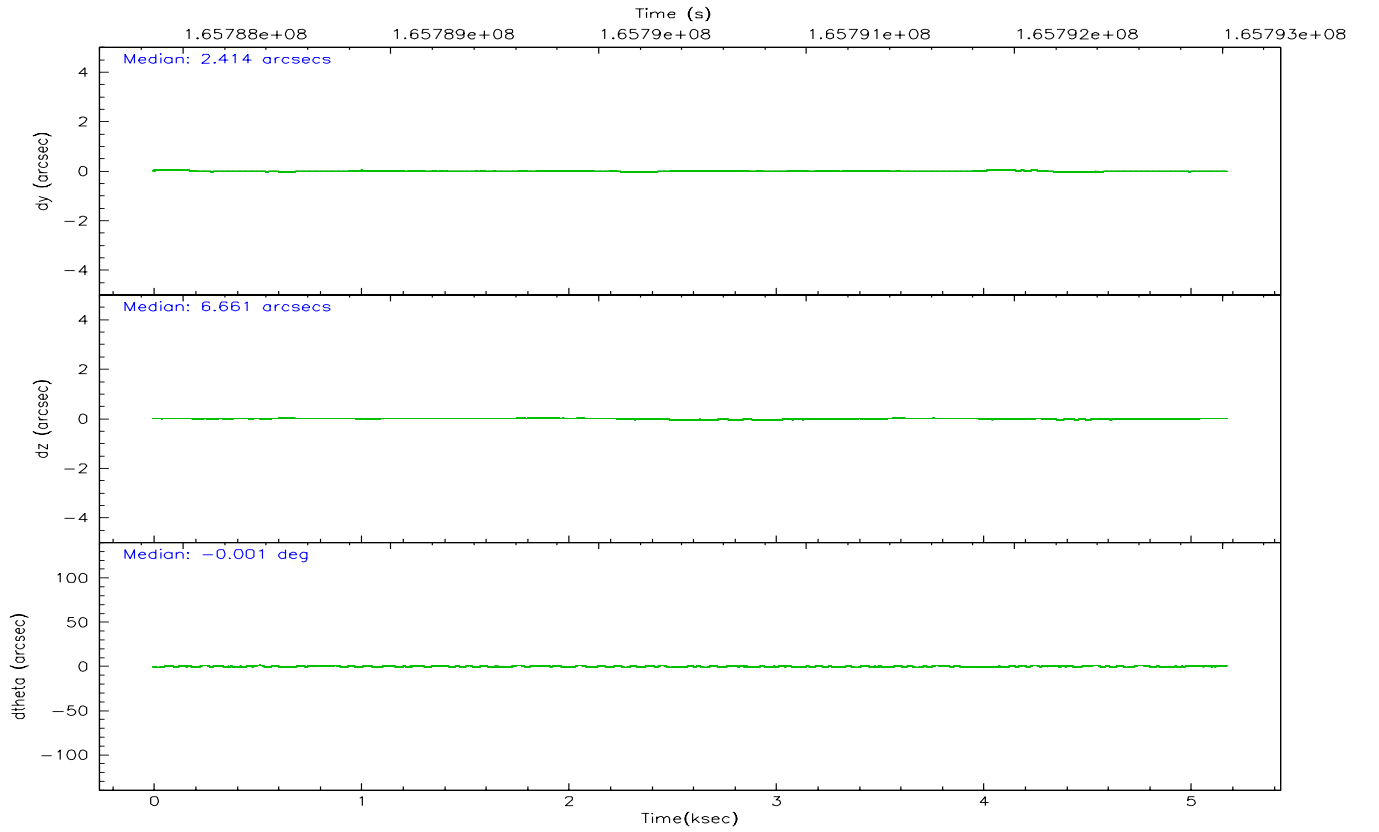
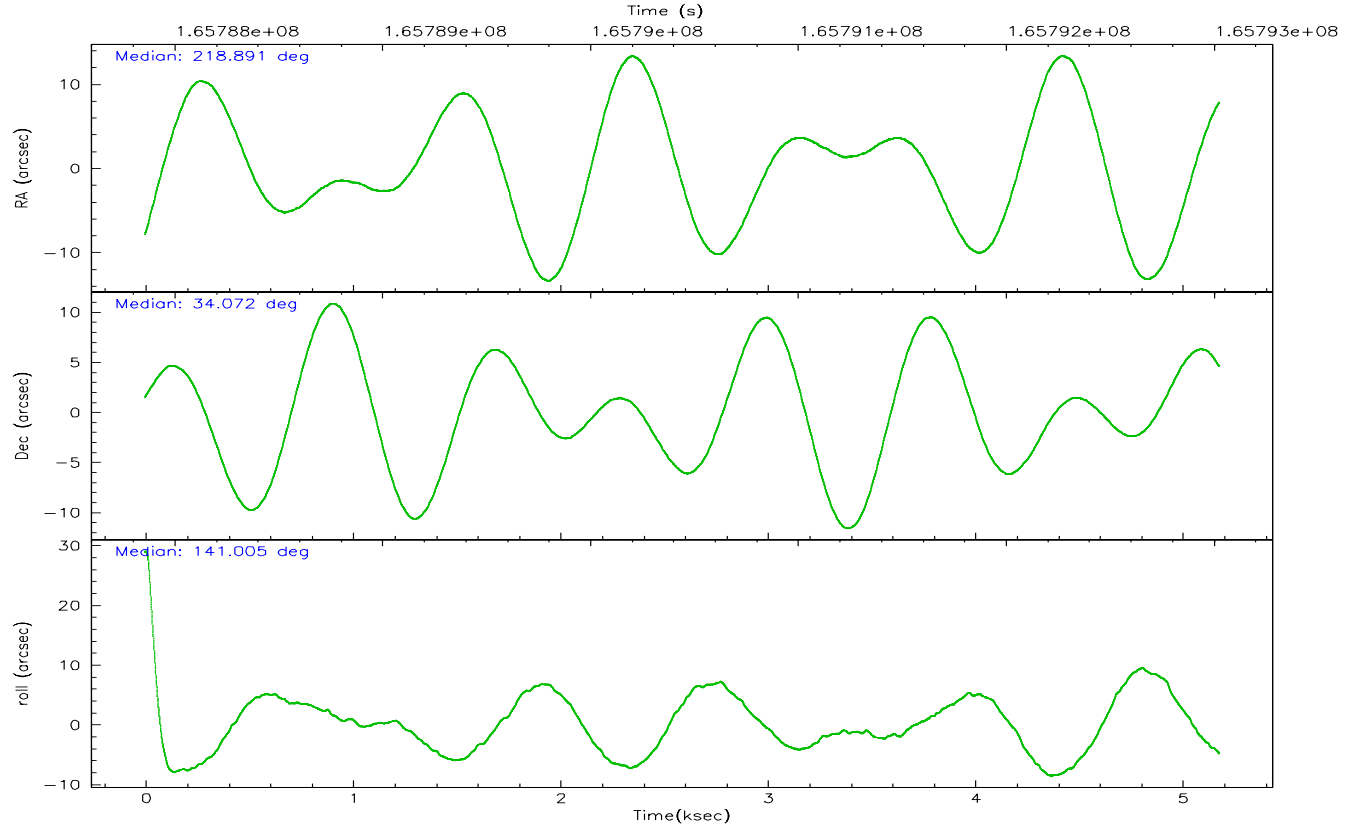
	ccd 0	ccd 1	ccd 2	ccd 3	ccd 6
grade 0 events	872	775	895	837	931
	3%	3%	3%	3%	3%
grade 1 events	21	6	19	18	8
	0%	0%	0%	0%	0%
grade 2 events	614	559	560	462	495
	2%	2%	2%	1%	1%
grade 3 events	295	330	238	285	271
	1%	1%	0%	1%	1%
grade 4 events	252	275	230	265	275
	1%	1%	0%	1%	1%
grade 5 events	705	742	660	793	801
	3%	3%	2%	3%	3%
grade 6 events	450	496	388	381	470
	1%	2%	1%	1%	1%
grade 7 events	20237	19904	23128	20910	21860
	86%	86%	88%	87%	87%

## 2.2 Compared Parameters

Parameter	Planned	Actual	Parameter	Planned	Actual
Instrument	ACIS	ACIS	Obspar format version number	6	6
Detector	ACIS-01236	ACIS-01236	Obspar file type	PREDICTED	ACTUAL
Grating	NONE	NONE	Obspar update status	NONE	UPDATED
Data mode	VFAINT	VFAINT	On-chip summing requested	N	N
Observation mode	POINTING	POINTING	Subarray requested	NONE	NONE
Pointing RA	218.923886	218.8912224921855	Alternating exposures requested	N	N
Pointing Dec	34.067924	34.07211785459517	Primary exposure time	0.000000	3.1
Pointing Roll	140.783174	141.0101640312771			
SIM focus pos (mm)	-0.782348	-0.7809083437167272			
SIM defocus (mm)	0	0.001439871863259334			
SIM translation stage pos (mm)	-233.592463	-233.5874344608287			
SIM translation stage offset (mm)	0	-0.005018542100998502			
Observation start time	165788030.184000	165787654.31669			
Observation start date	2003-04-03T20:12:46	2003-04-03T20:07:34			
Observation end time	165793030.184000	165793164.20442			
Observation end date	2003-04-03T21:36:06	2003-04-03T21:39:24			
Read mode	TIMED	TIMED			

2.3 Aspect





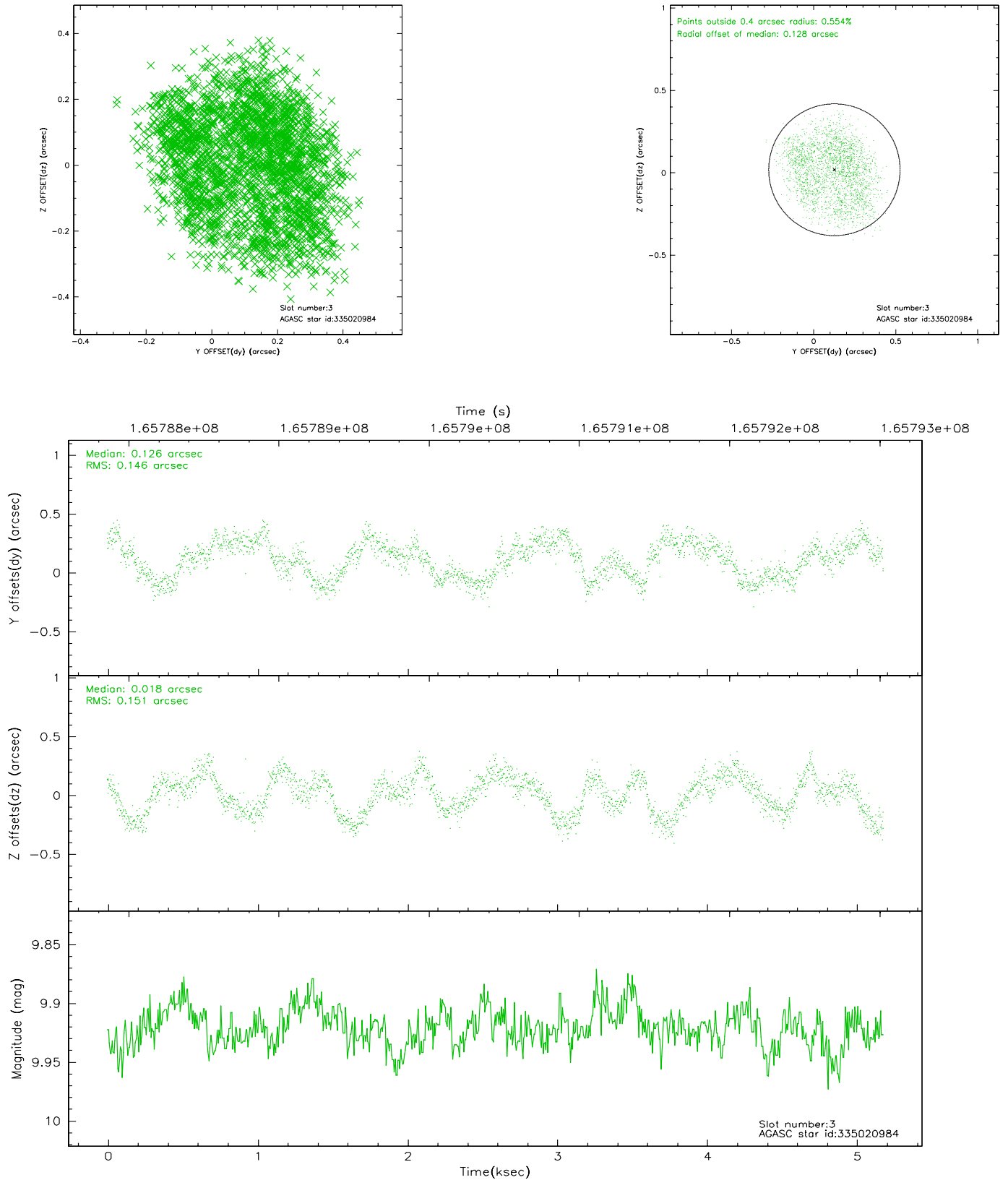
### Slot Statistics

slot	status	id	mag	n_pts	med_dy	med_dz	dr1	dr2	ra	dec	mean_y	mean_z
0	FID	ACIS-I-1	7.25	1264	-0.009	0.023	0.006	0.010	0.000000	0.000000	937.37	-830.04
1	FID	ACIS-I-5	7.24	1264	-0.050	0.043	0.006	0.009	0.000000	0.000000	-1810.09	1066.95
2	FID	ACIS-I-6	7.26	1264	-0.032	0.004	0.006	0.011	0.000000	0.000000	401.68	1712.69
3	GUIDE	335020984	9.92	2525	0.126	0.018	0.234	0.330	218.841668	33.815112	-384.29	860.83
4	GUIDE	335023304	8.42	2528	-0.140	0.072	0.124	0.173	218.883608	34.686545	1500.38	-1649.08
5	GUIDE	335152784	7.21	2528	-0.014	-0.109	0.075	0.118	219.280617	33.678221	-1713.34	409.39
6	GUIDE	335155824	8.91	2528	0.049	0.085	0.101	0.157	219.689900	34.035435	-1839.54	-1360.34
7	GUIDE	335157088	9.08	2526	-0.020	-0.070	0.135	0.196	219.274029	33.726909	-1588.08	286.65

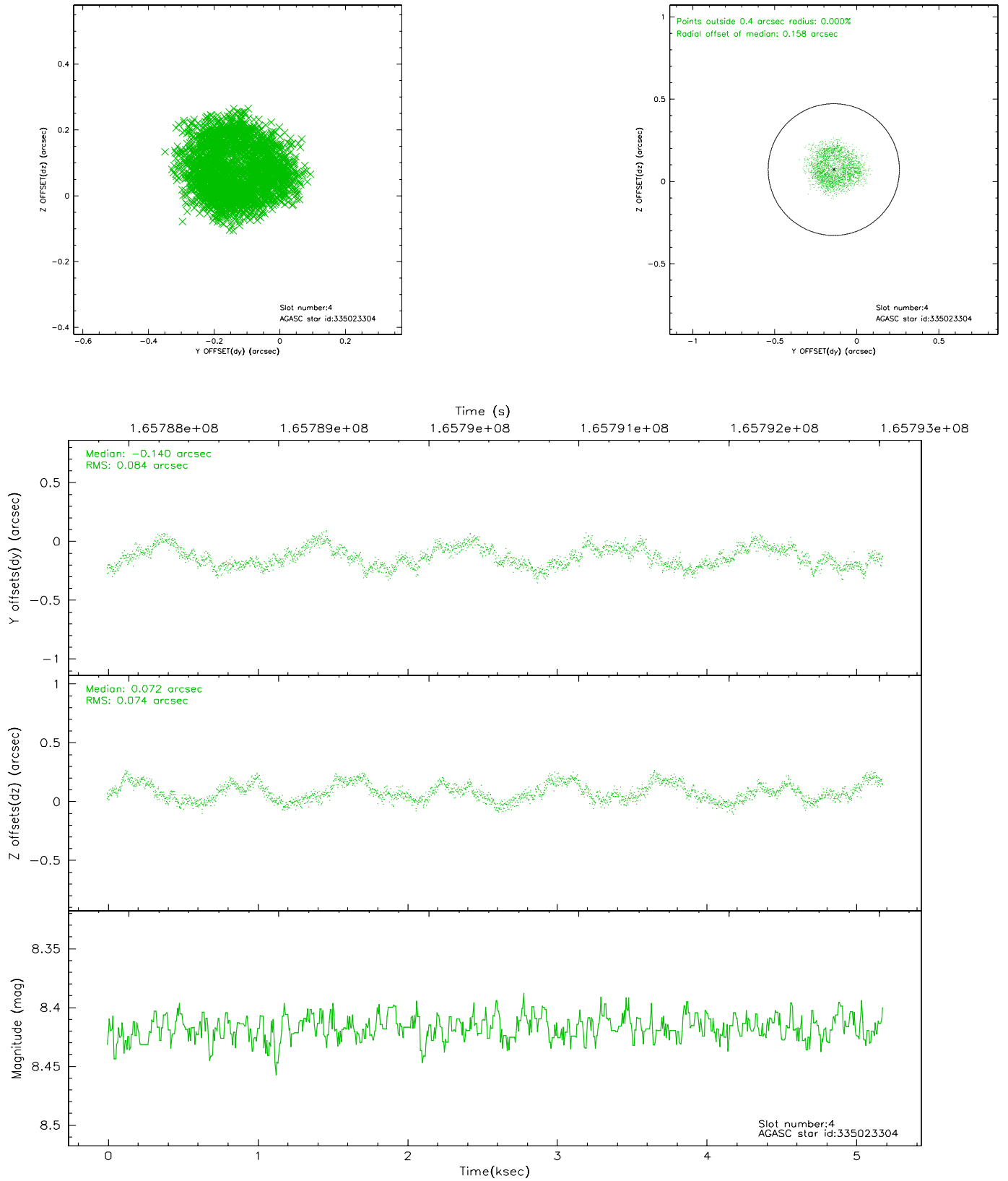


## 2.4 Star Slots

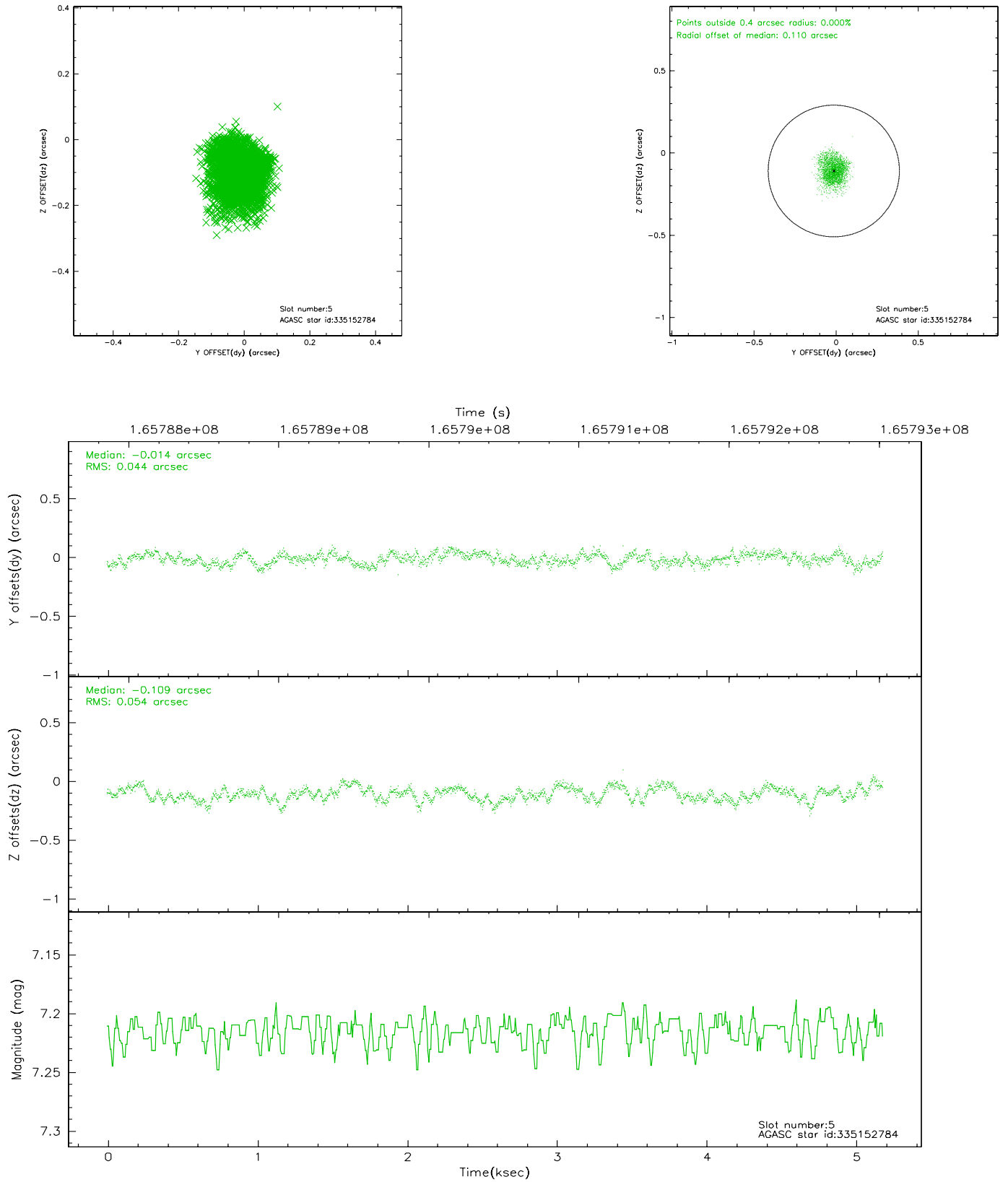
### 2.4.1 Slot 3



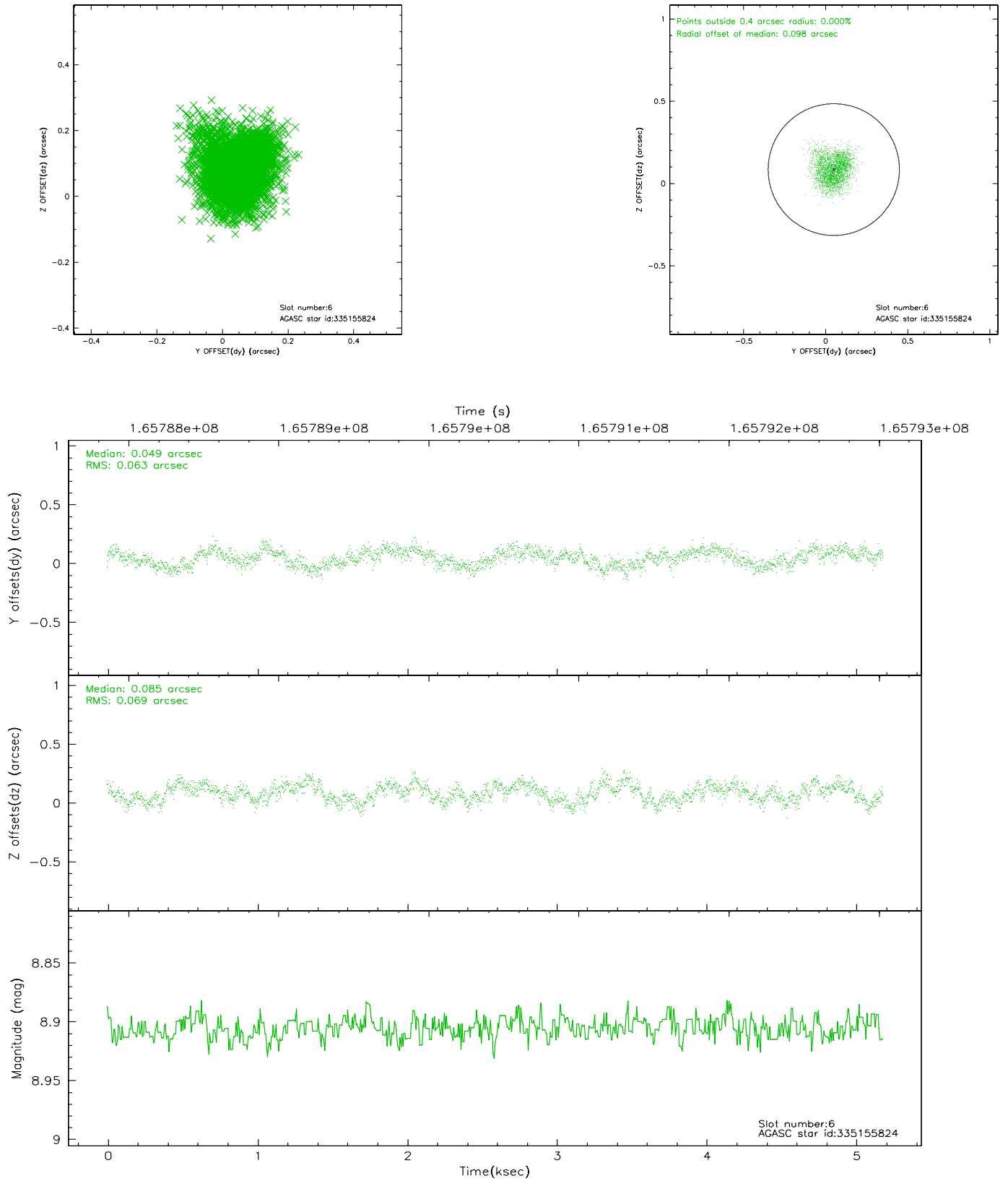
## 2.4.2 Slot 4



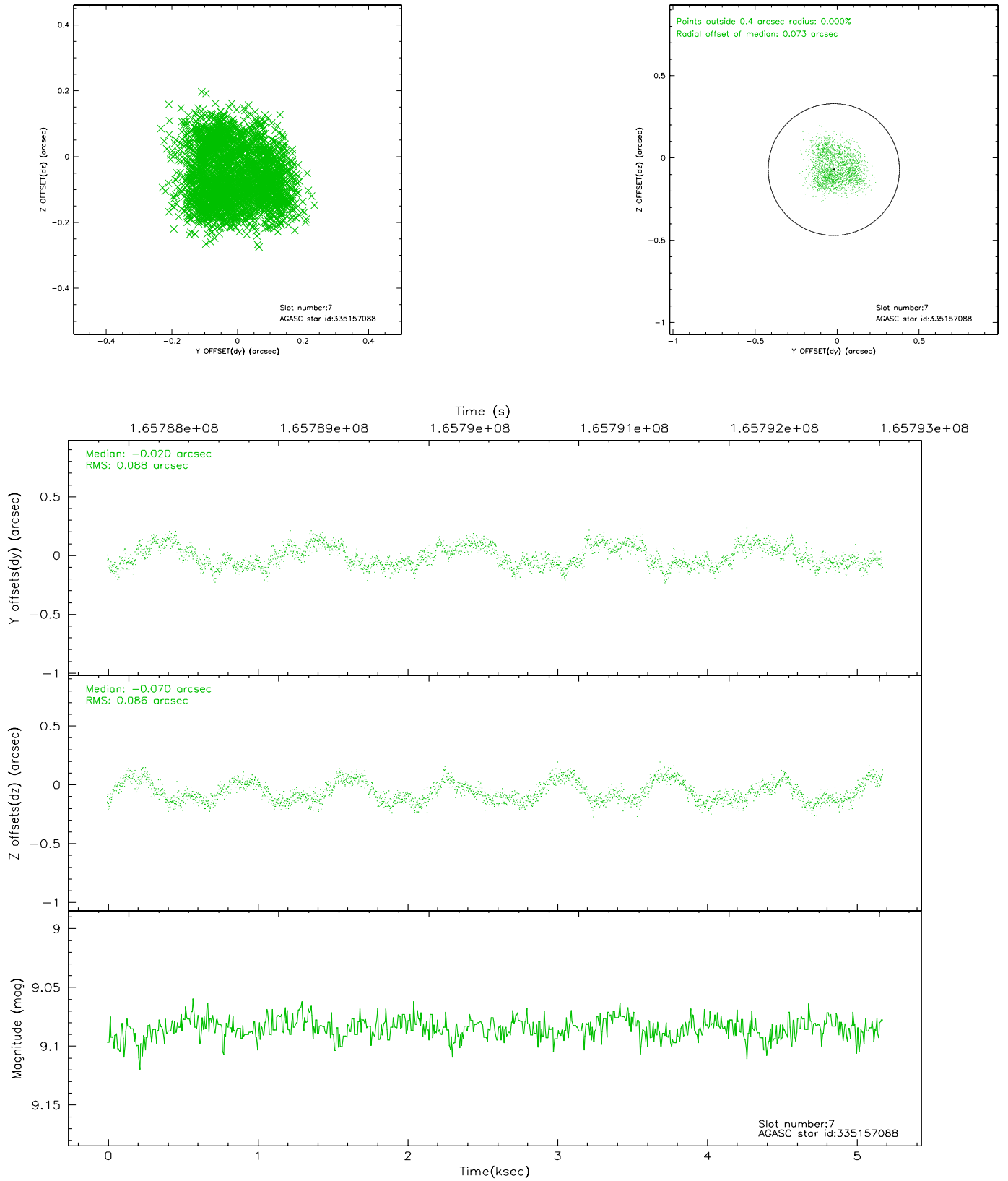
### 2.4.3 Slot 5



## 2.4.4 Slot 6

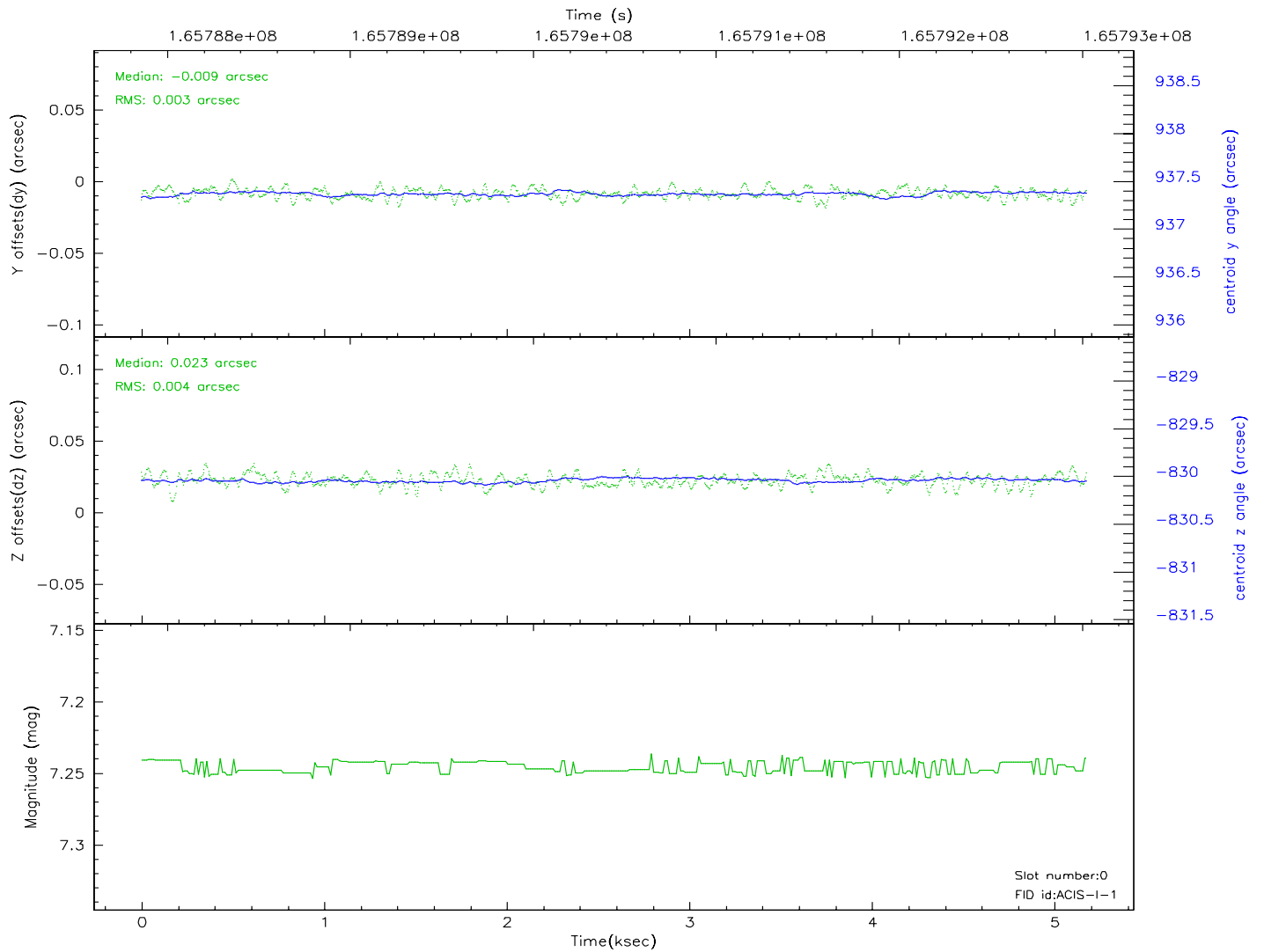
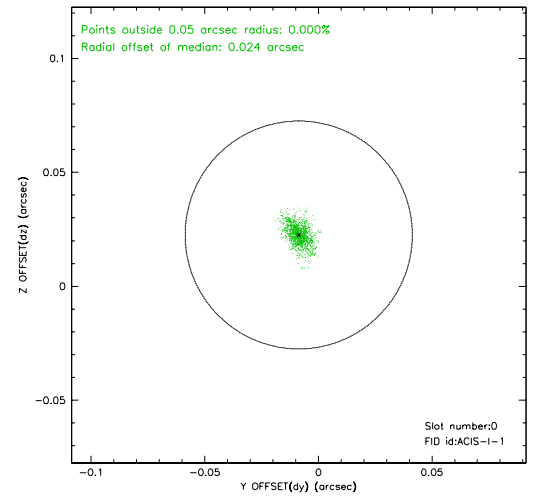
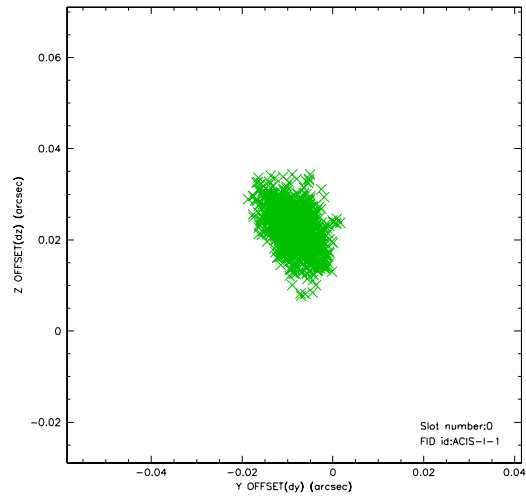


## 2.4.5 Slot 7

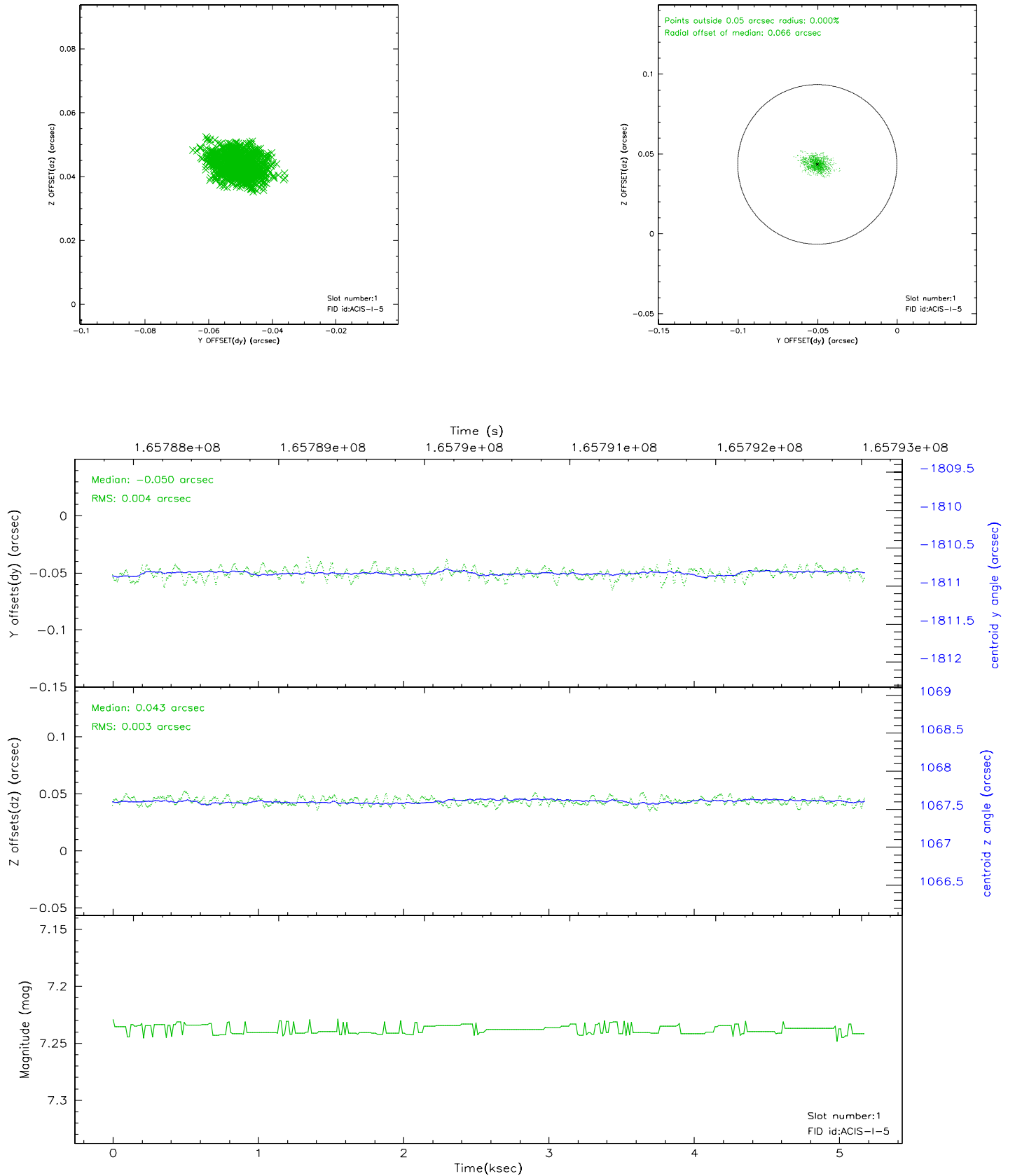


## 2.5 FID Slots

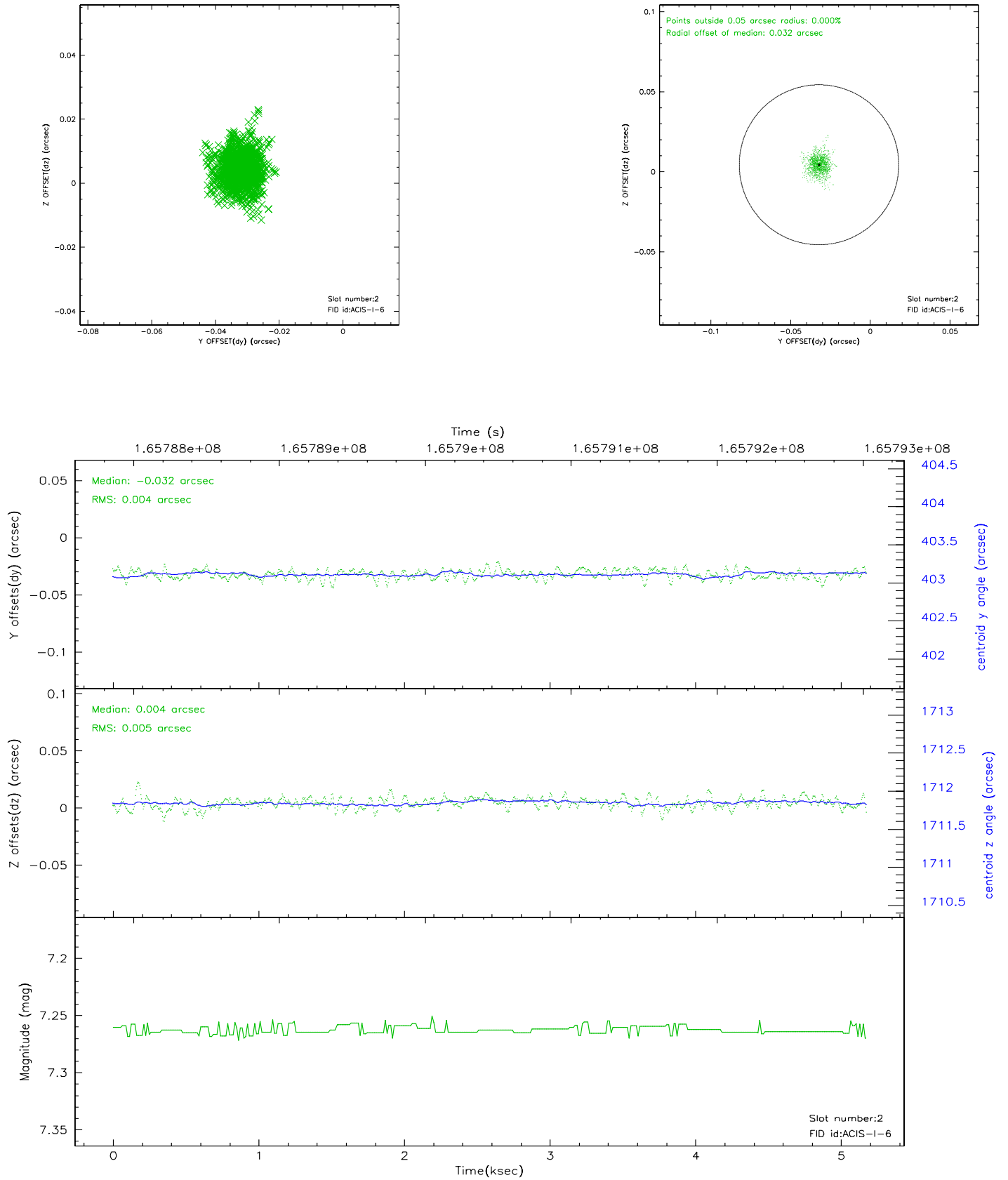
### 2.5.1 Slot 0



## 2.5.2 Slot 1

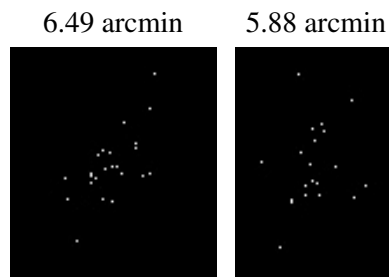


### 2.5.3 Slot 2





### 3 Point Sources



## A Summary

### A.1 Status

V&V Scientist	Jen Lauer
V&V Date (YYYY-MM-DD)	2006.07.30
V&V Edition	1
V&V Disposition and Status	OK
V&V Charge Time	4.777

### A.2 Comments