

V&V Reference Report

L2 ASCDS Version : 7.6.9

Observation 4159 - L2 Version 001
Chandra X-Ray Center

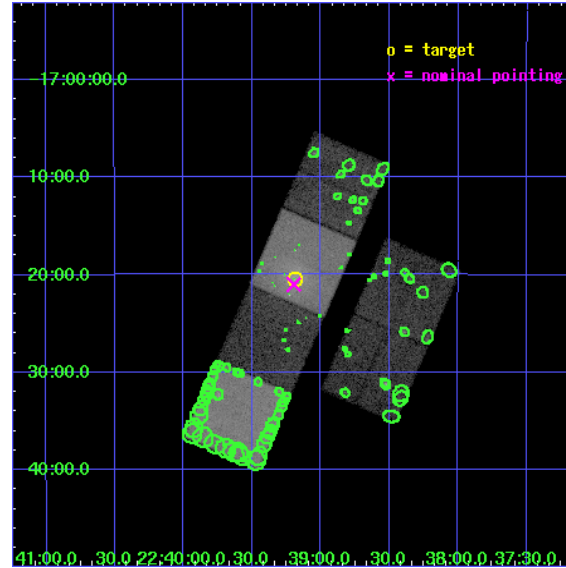
L2 Processing Date : Oct 9 2006

Contents

1	Front	2
2	OBI	3
2.1	OBI	3
2.1.1	Images	3
2.1.2	Bias	3
2.1.3	Parameters	4
2.1.4	Events	4
2.2	Compared Parameters	5
2.3	Aspect	6
2.4	Star Slots	9
2.4.1	Slot 3	9
2.4.2	Slot 4	10
2.4.3	Slot 5	11
2.4.4	Slot 6	12
2.4.5	Slot 7	13
2.5	FID Slots	14
2.5.1	Slot 0	14
2.5.2	Slot 1	15
2.5.3	Slot 2	16
3	Point Sources	17
A	Summary	18
A.1	Status	18
A.2	Comments	18

1 Front

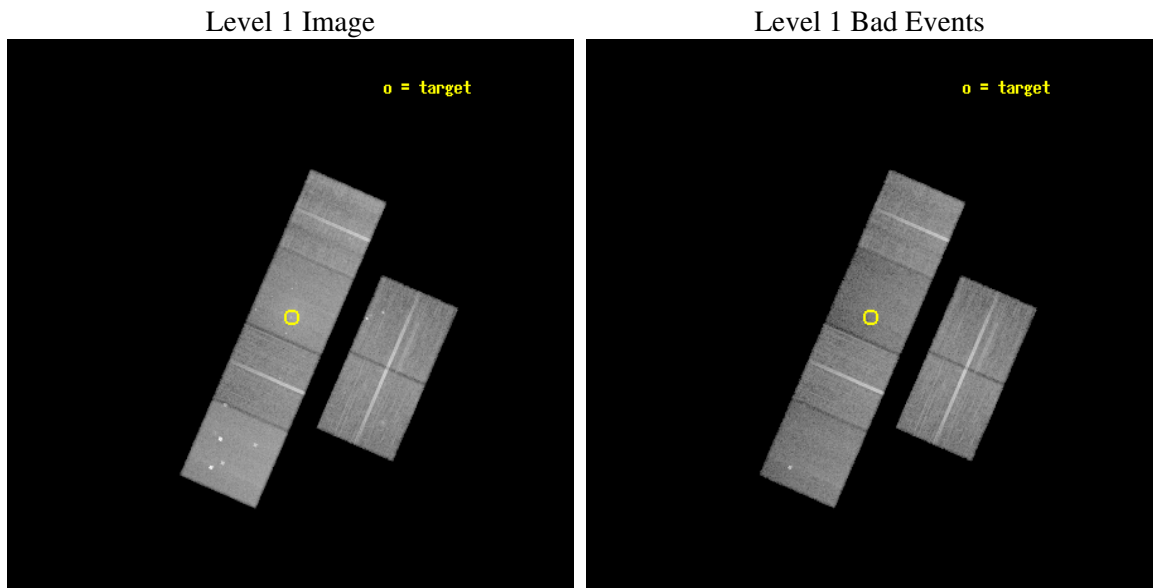
seq_num	700838
obs_id	4159
title	JET DISRUPTION IN WAT RADIO GALAXIES: PROBING THE DYNAMICS OF GALAXY CLUSTERS
observer	Dr Irini Sakelliou
object	2236-176
dtcycle	0
cycle	P
ra_targ	339.796667
dec_targ	-17.340611
ra_nom	339.79900930176
dec_nom	-17.350018320449
roll_nom	293.46118731335
revision	3
ontime	39737.599851966
livetime	39234.41843553
ontime2	39734.358891666
ontime3	39734.358911604
ontime5	39737.599851966
ontime6	39737.599851966
ontime7	39737.599851966
ontime8	39737.599851966
l2events	289831



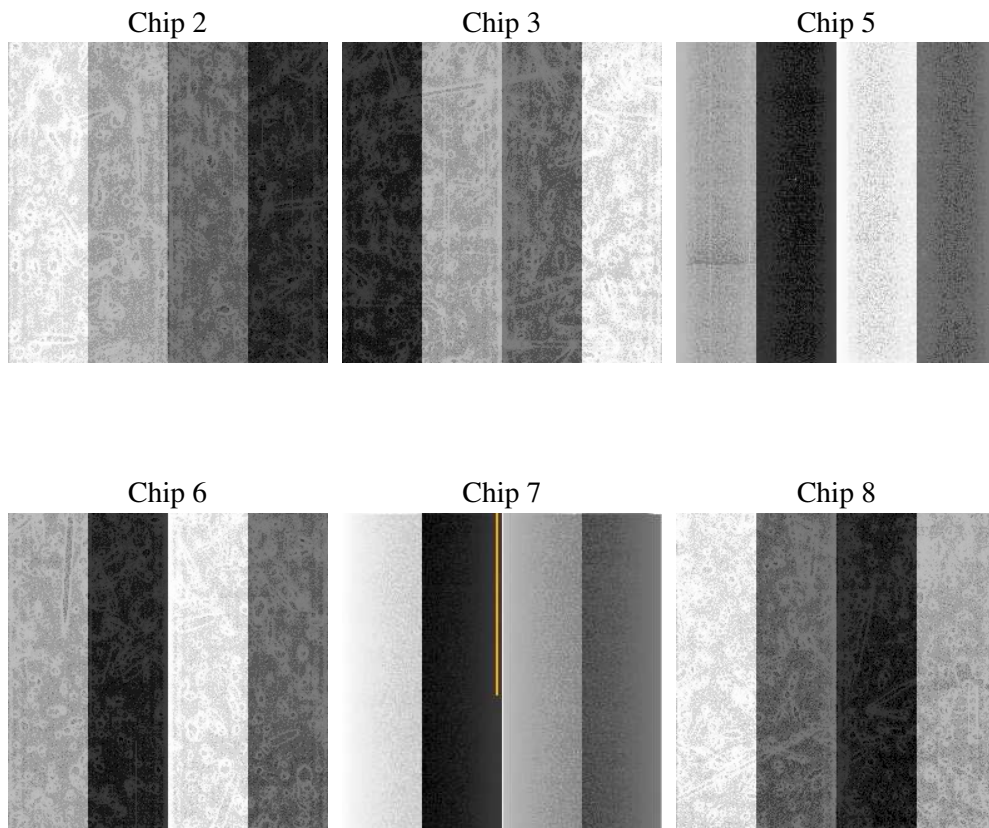
2 OBI

2.1 OBI

2.1.1 Images



2.1.2 Bias



2.1.3 Parameters

obi_num	0
ascdsver	7.6.9
caldsver	3.2.3
date	2006-10-09T20:57:16
revision	3

sched_exp_time	39800.000000
ontime	39741.152034163
ontime2	39737.911053926
ontime3	39737.911073864
ontime5	39741.152034163
ontime6	39741.152014226
ontime7	39741.152034163
ontime8	39741.152034163
l1events	1292187

2.1.4 Events

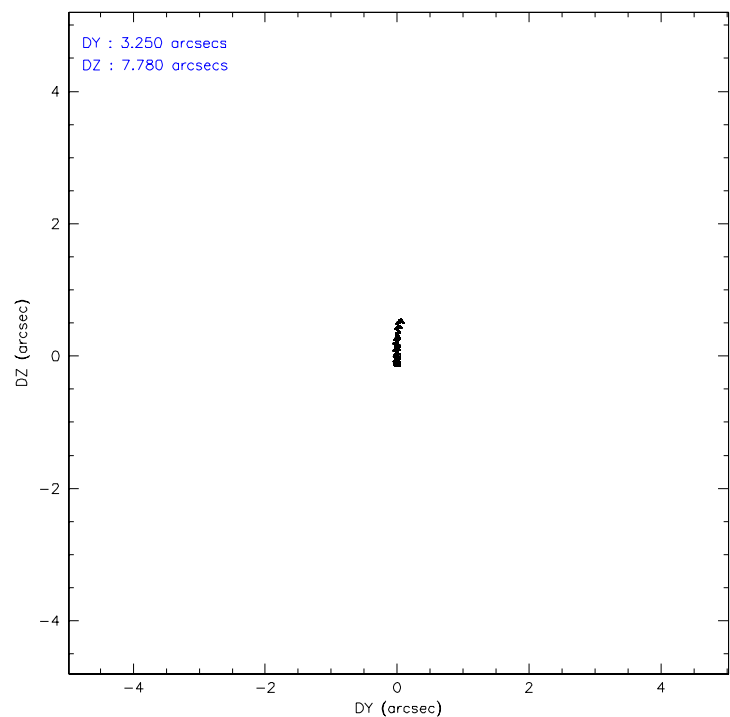
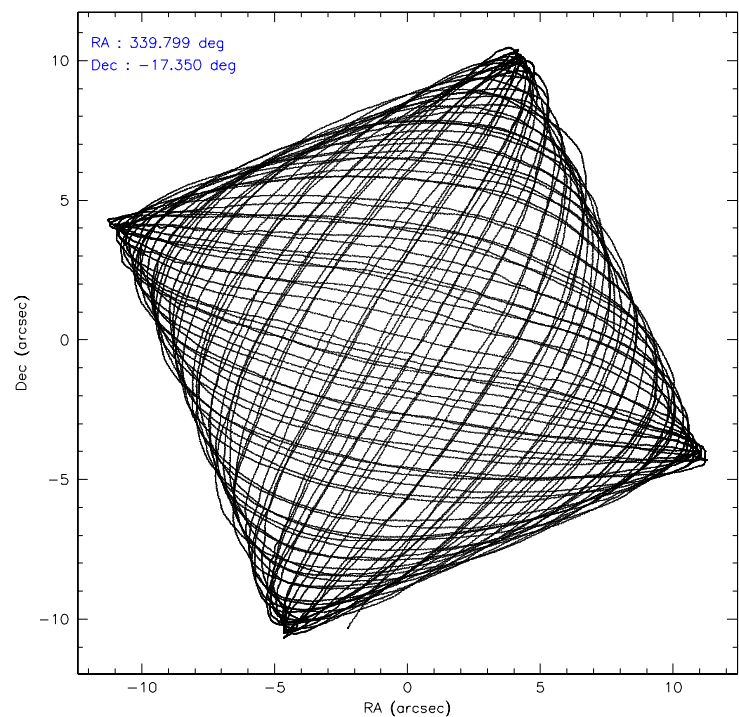
	ccd 2	ccd 3	ccd 5	ccd 6	ccd 7	ccd 8
level 1 events	201622	189147	255360	191001	223057	232000
rejected events	181993	168408	131411	169100	117678	179668
rejected %	90%	89%	51%	88%	52%	77%

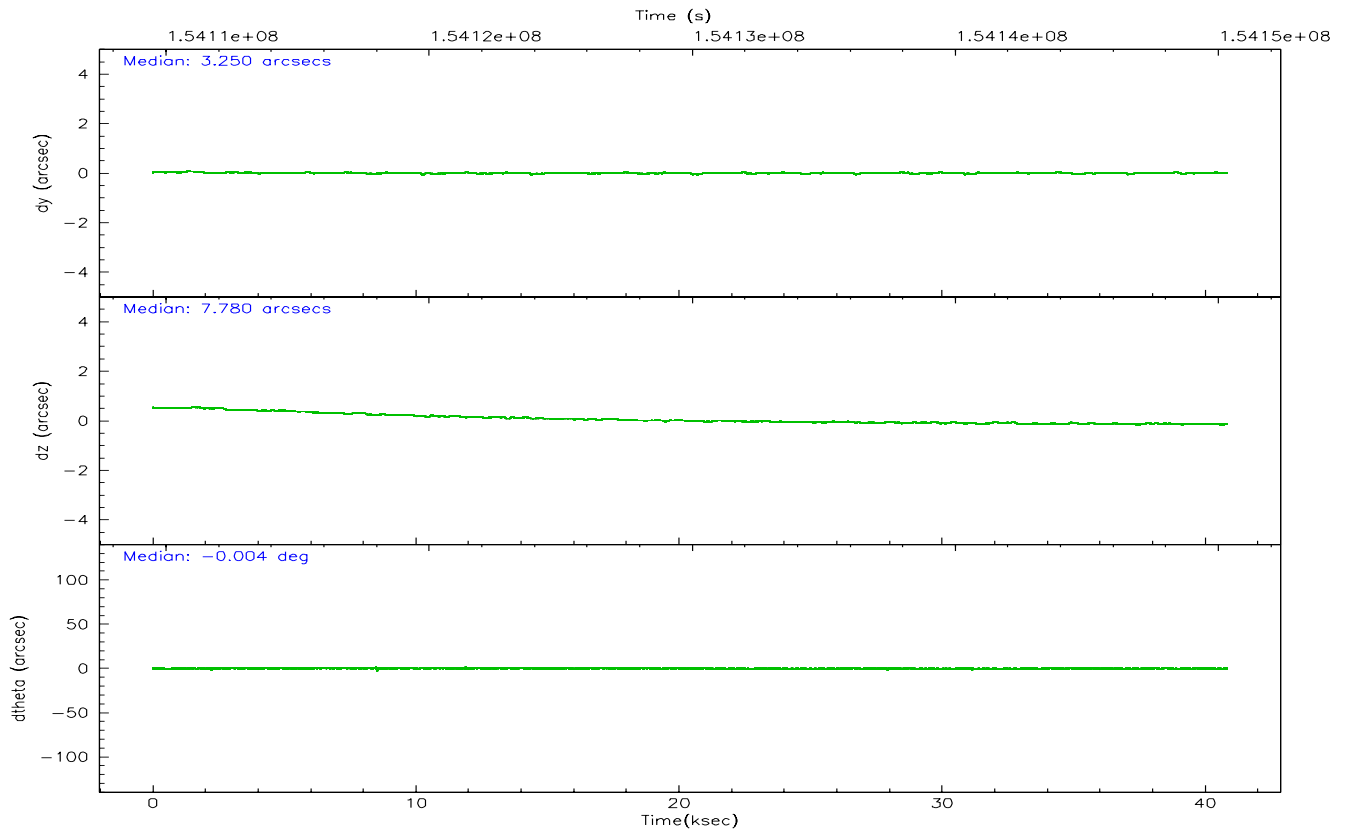
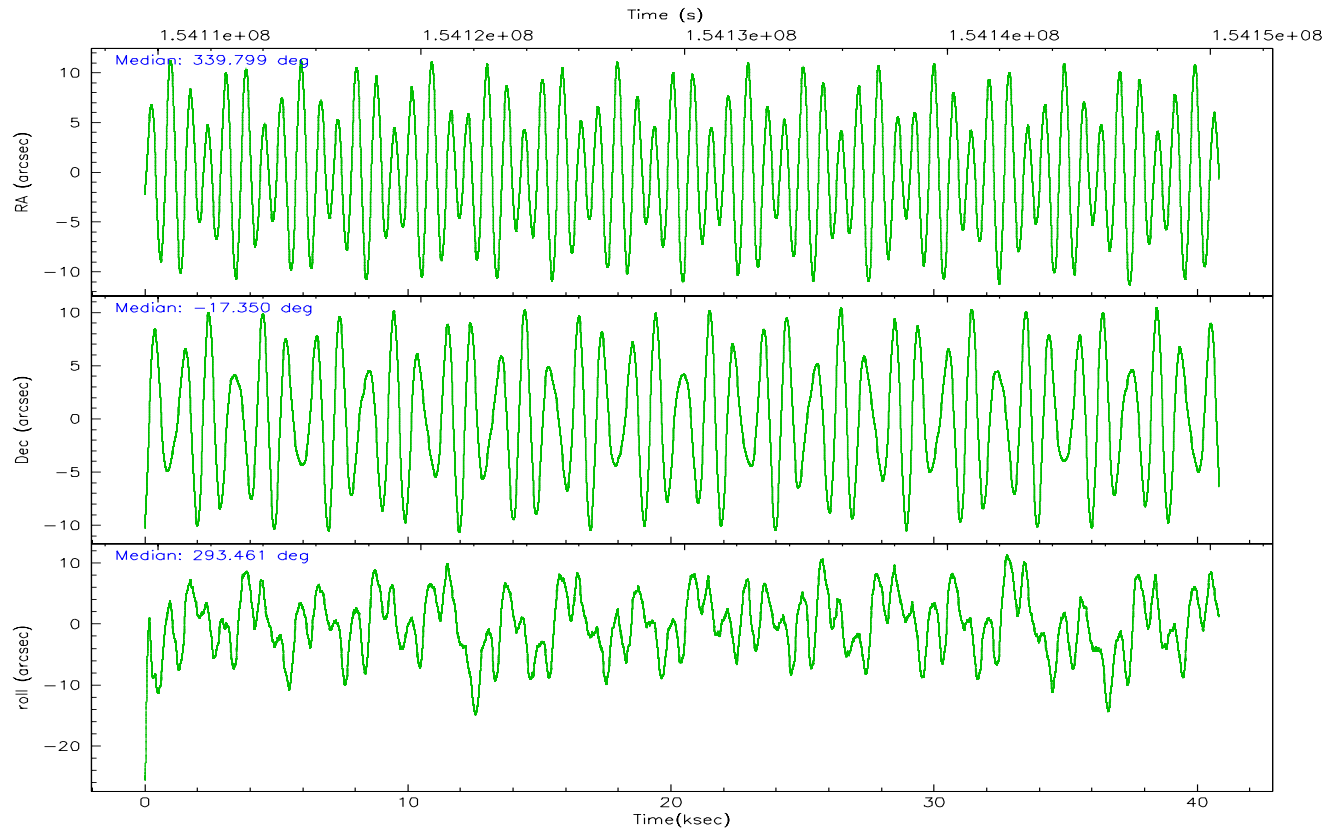
	ccd 2	ccd 3	ccd 5	ccd 6	ccd 7	ccd 8
grade 0 events	7666	8883	12713	8965	11495	16963
	3%	4%	4%	4%	5%	7%
grade 1 events	104	104	105	81	104	144
	0%	0%	0%	0%	0%	0%
grade 2 events	4322	3978	38458	4244	26594	10982
	2%	2%	15%	2%	11%	4%
grade 3 events	2096	2252	3196	2297	7202	5786
	1%	1%	1%	1%	3%	2%
grade 4 events	2142	2119	3128	2220	7159	5401
	1%	1%	1%	1%	3%	2%
grade 5 events	6203	7111	13731	7493	15325	10083
	3%	3%	5%	3%	6%	4%
grade 6 events	3404	3508	66462	4178	52933	13201
	1%	1%	26%	2%	23%	5%
grade 7 events	175685	161192	117567	161523	102245	169440
	87%	85%	46%	84%	45%	73%

2.2 Compared Parameters

Parameter	Planned	Actual	Parameter	Planned	Actual
Instrument	ACIS	ACIS	Obspar format version number	6	6
Detector	ACIS-235678	ACIS-235678	Obspar file type	PREDICTED	ACTUAL
Grating	NONE	NONE	Obspar update status	NONE	UPDATED
Data mode	VFAINT	VFAINT	Number of optional ACIS chips dropped	0	0
Observation mode	POINTING	POINTING	On-chip summing requested	N	N
Pointing RA	339.775854	339.7990093017584	Subarray requested	NONE	NONE
Pointing Dec	-17.334102	-17.35001832044883	Alternating exposures requested	N	N
Pointing Roll	293.297653	293.4611873133496	Primary exposure time	0.000000	3.2
SIM focus pos (mm)	-0.684267	-0.6828225247311905			
SIM defocus (mm)	0	0.001444936568705701			
SIM translation stage pos (mm)	-190.132523	-190.1425803651734			
SIM translation stage offset (mm)	0	0.01005778216563158			
Observation start time	154110544.184000	154109157.96472			
Observation start date	2002-11-19T16:28:00	2002-11-19T16:05:57			
Observation end time	154150344.184000	154150812.42896			
Observation end date	2002-11-20T03:31:20	2002-11-20T03:40:12			
Read mode	TIMED	TIMED			

2.3 Aspect



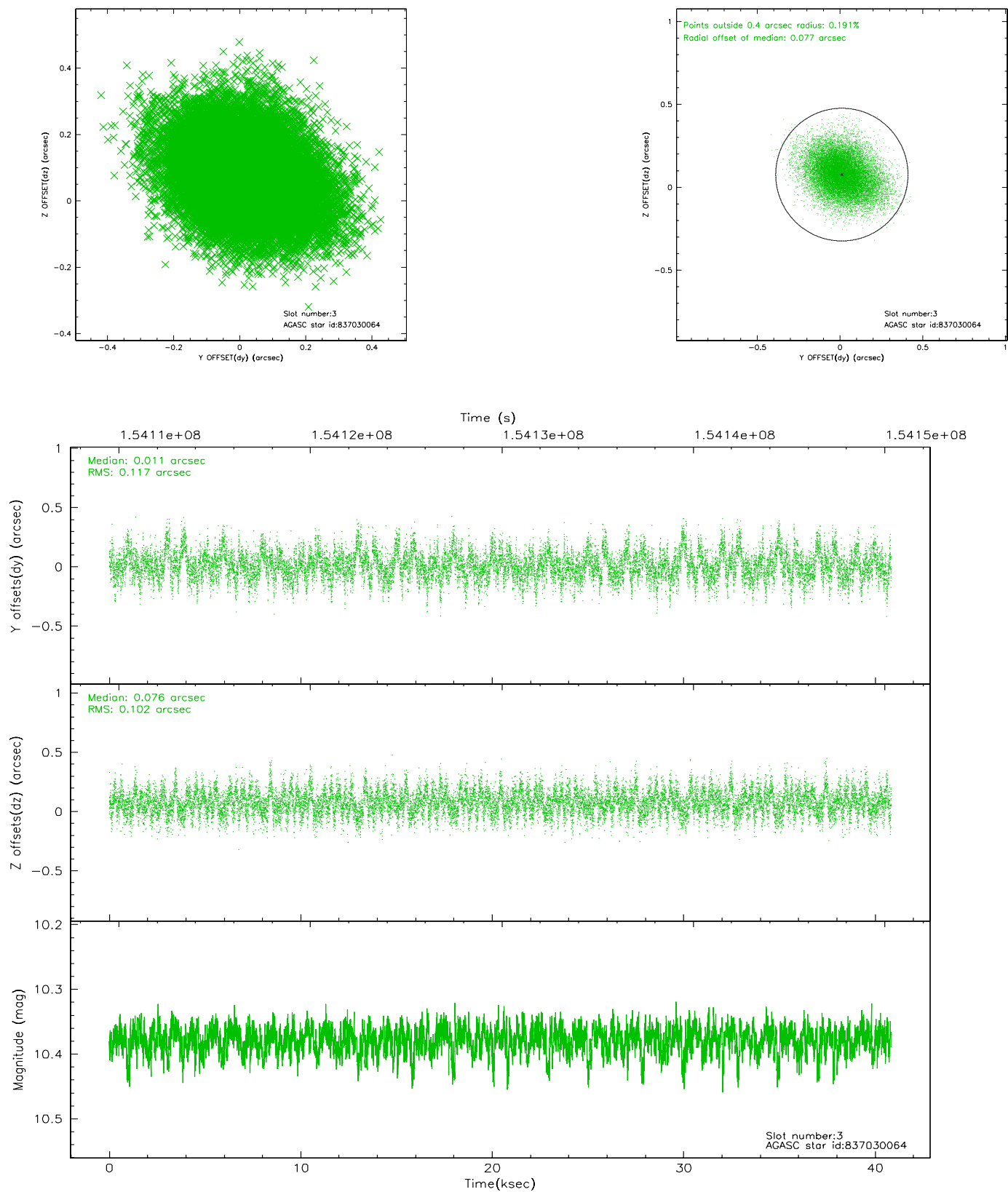


Slot Statistics

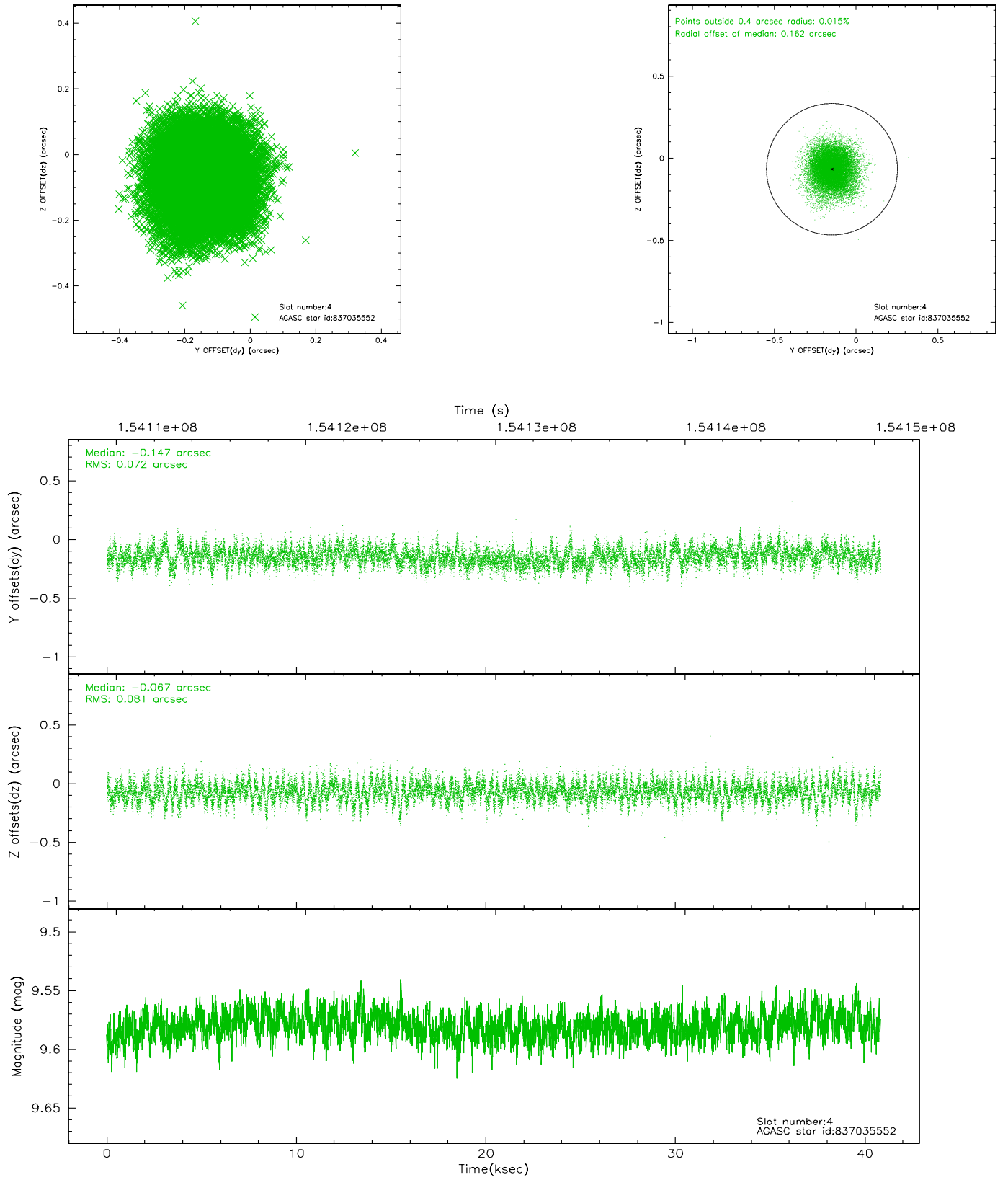
slot	status	id	mag	n_pts	med_dy	med_dz	dr1	dr2	ra	dec	mean_y	mean_z
0	FID	ACIS-S-2	7.11	9957	-0.000	0.012	0.007	0.012	0.000000	0.000000	-755.91	-1728.97
1	FID	ACIS-S-4	7.20	9958	-0.031	-0.003	0.005	0.009	0.000000	0.000000	2157.34	179.46
2	FID	ACIS-S-5	7.24	9959	0.000	-0.001	0.007	0.011	0.000000	0.000000	-1808.72	173.17
3	GUIDE	837030064	10.38	19901	0.011	0.076	0.163	0.272	340.264252	-17.326769	641.96	1551.32
4	GUIDE	837035552	9.58	19909	-0.147	-0.067	0.115	0.188	339.376458	-16.830760	-2207.02	-547.93
5	GUIDE	837420616	8.99	19912	0.160	-0.144	0.081	0.138	340.015419	-17.807878	1892.28	79.36
6	BAD	837421240	10.39	18341	-0.098	-0.033	0.192	0.325	339.594832	-18.105597	2307.85	-1667.53
7	GUIDE	837421736	9.46	19909	0.085	0.162	0.146	0.383	339.991886	-17.959175	2360.34	-210.52

2.4 Star Slots

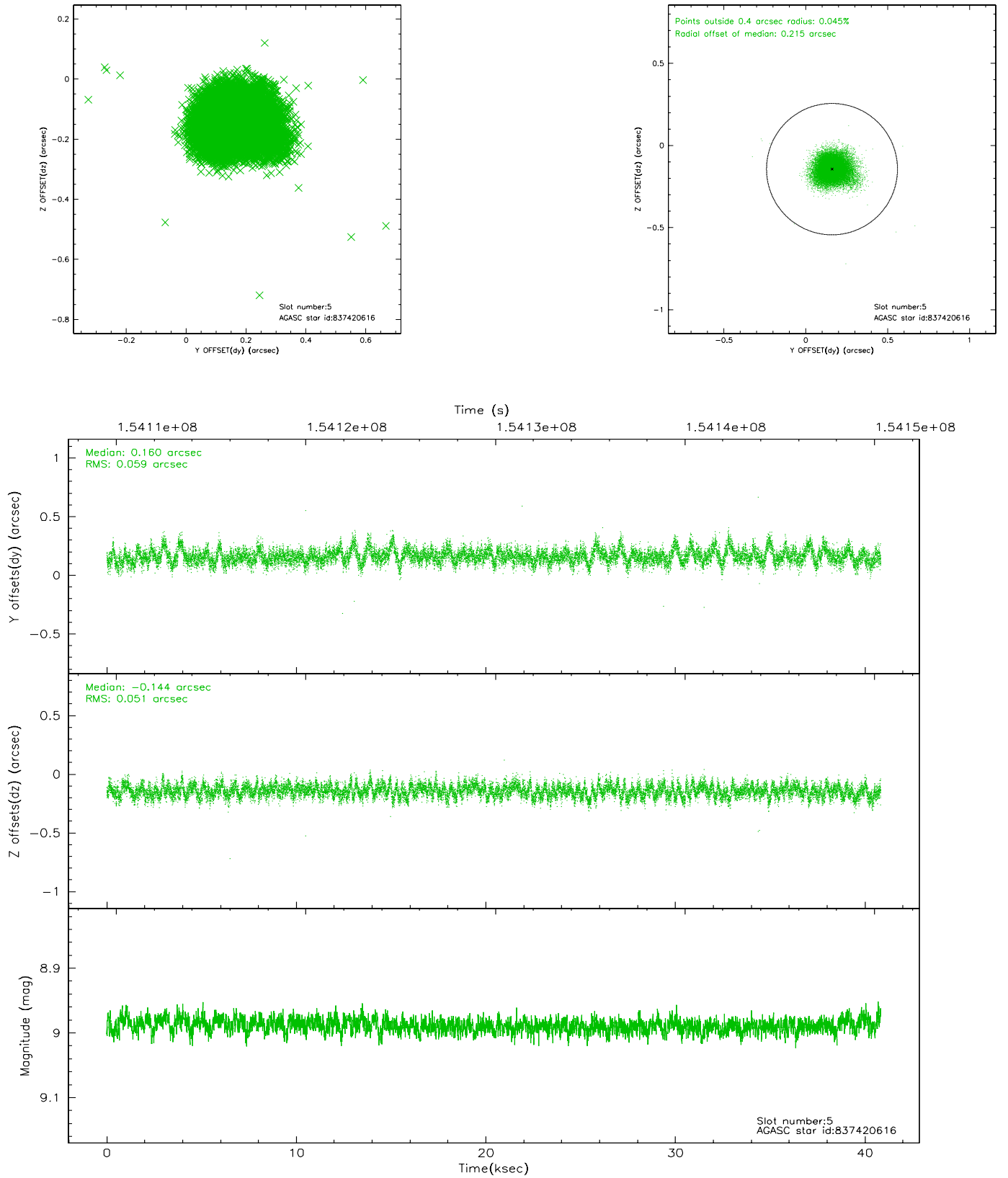
2.4.1 Slot 3



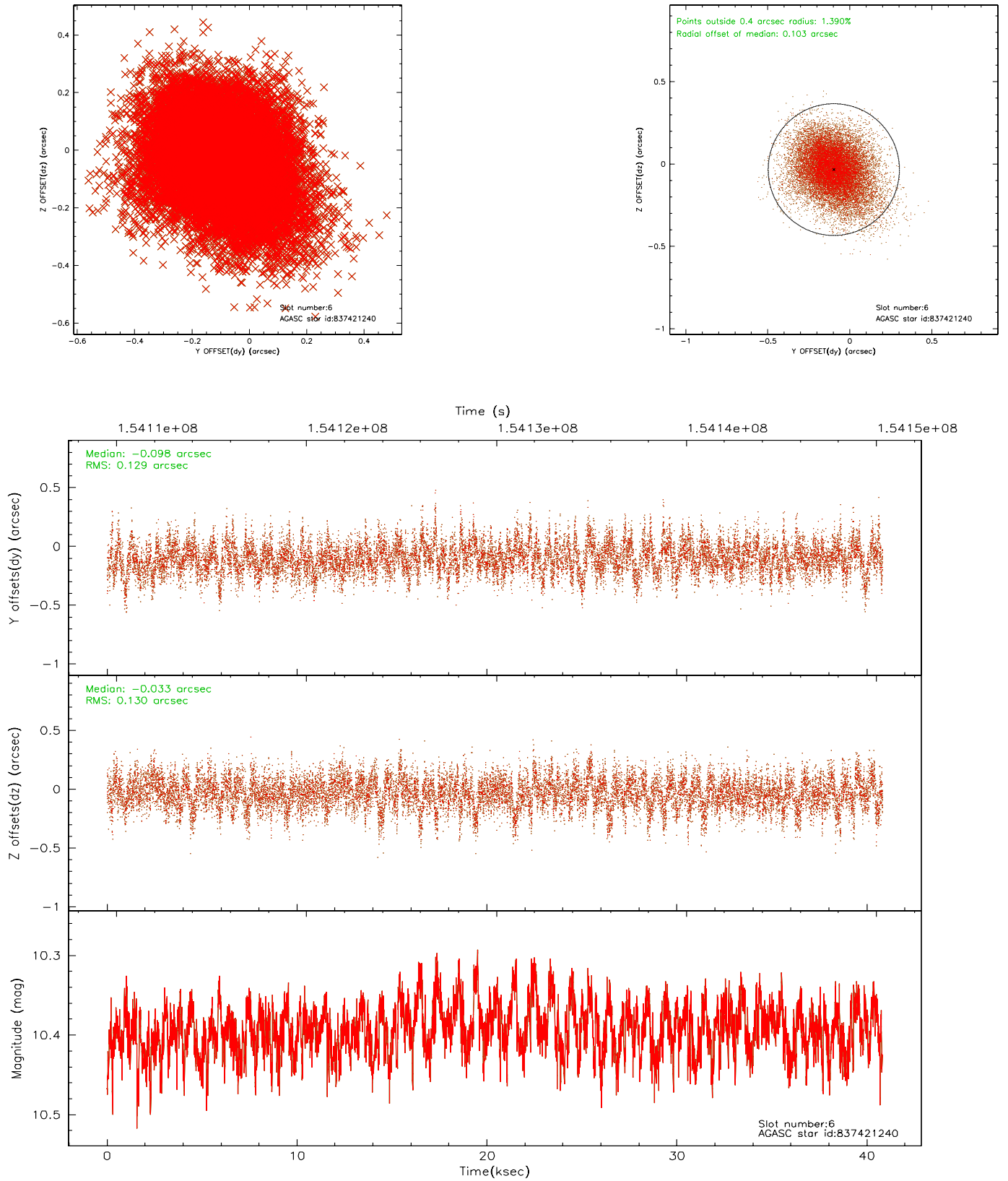
2.4.2 Slot 4



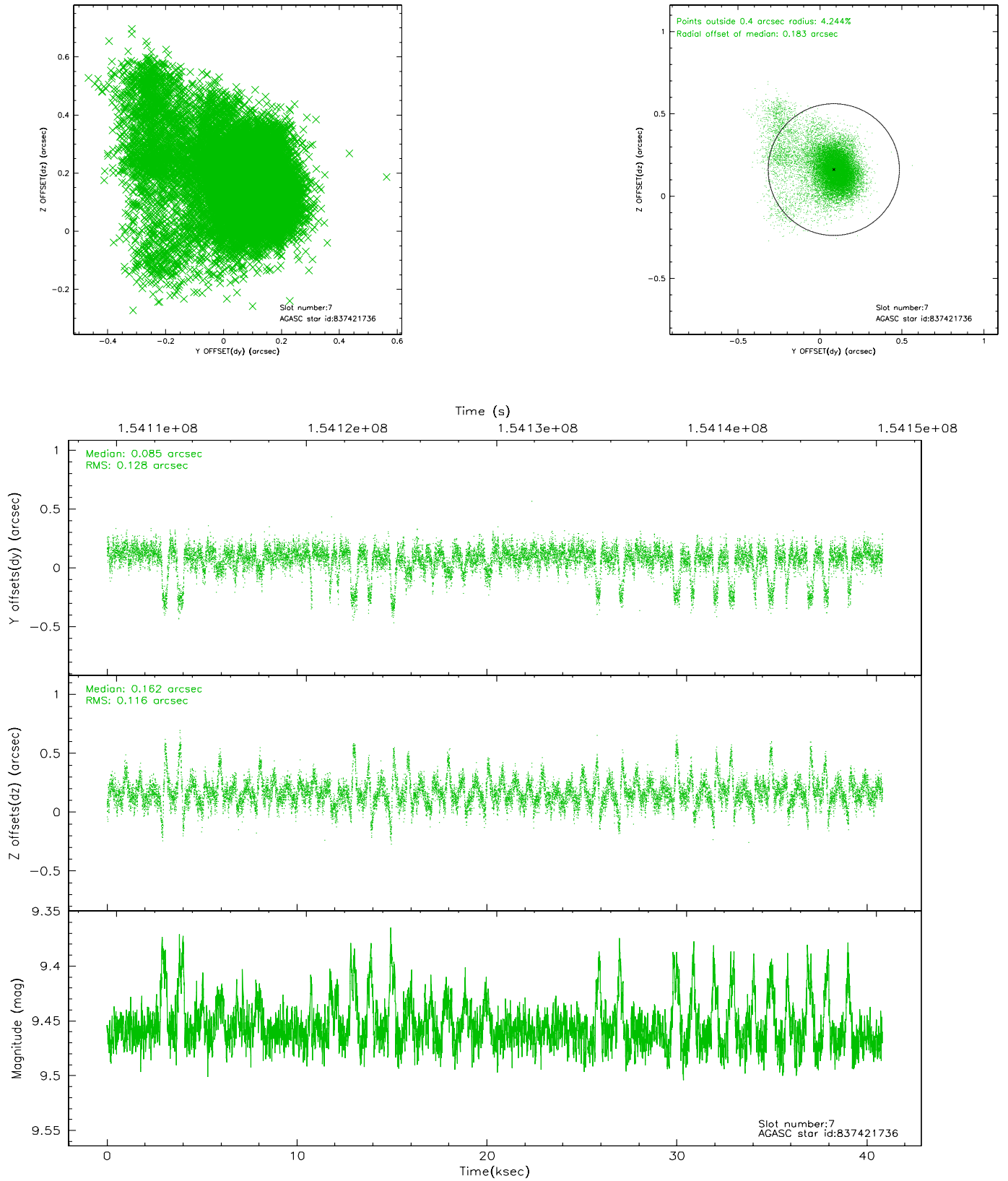
2.4.3 Slot 5



2.4.4 Slot 6

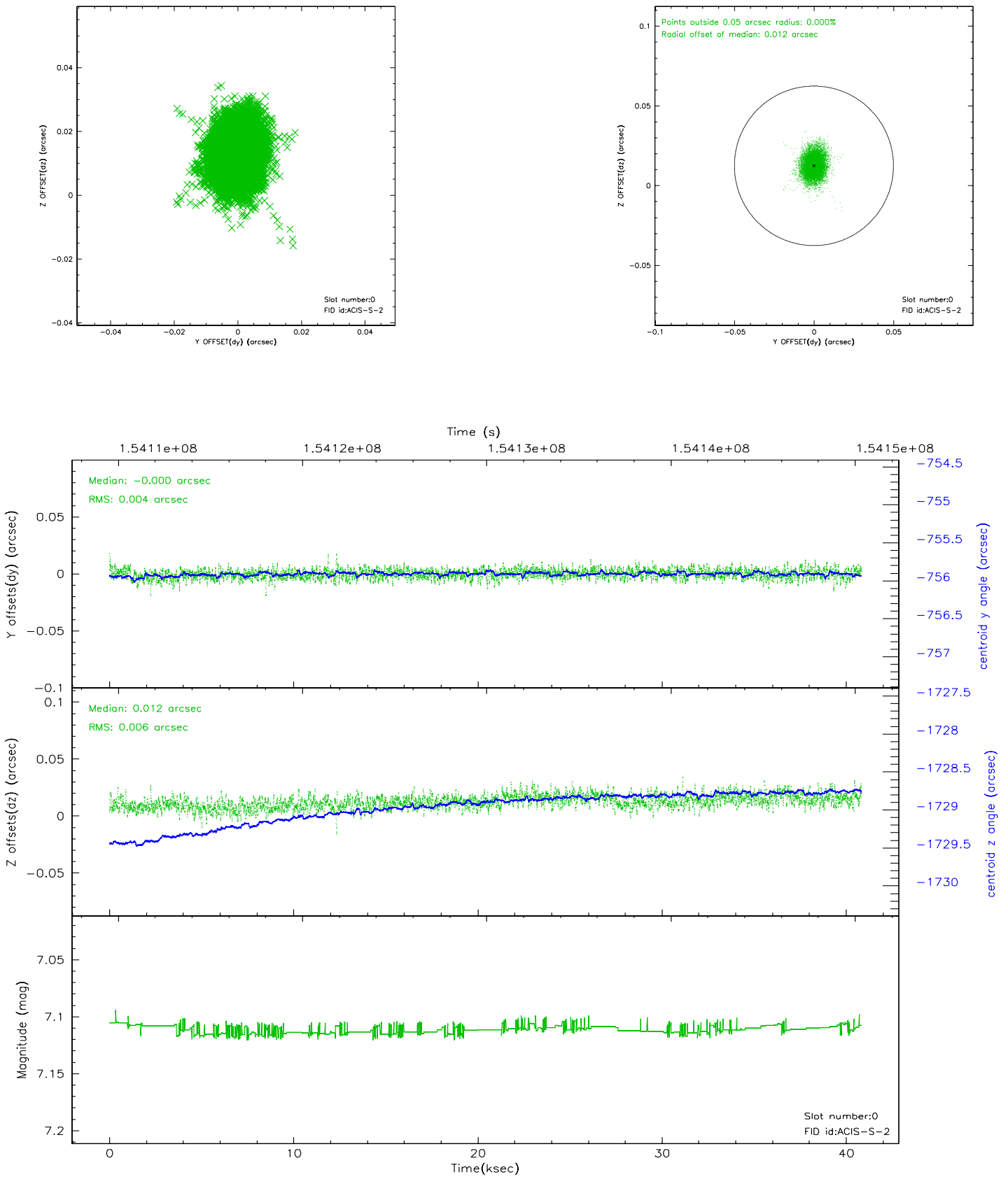


2.4.5 Slot 7

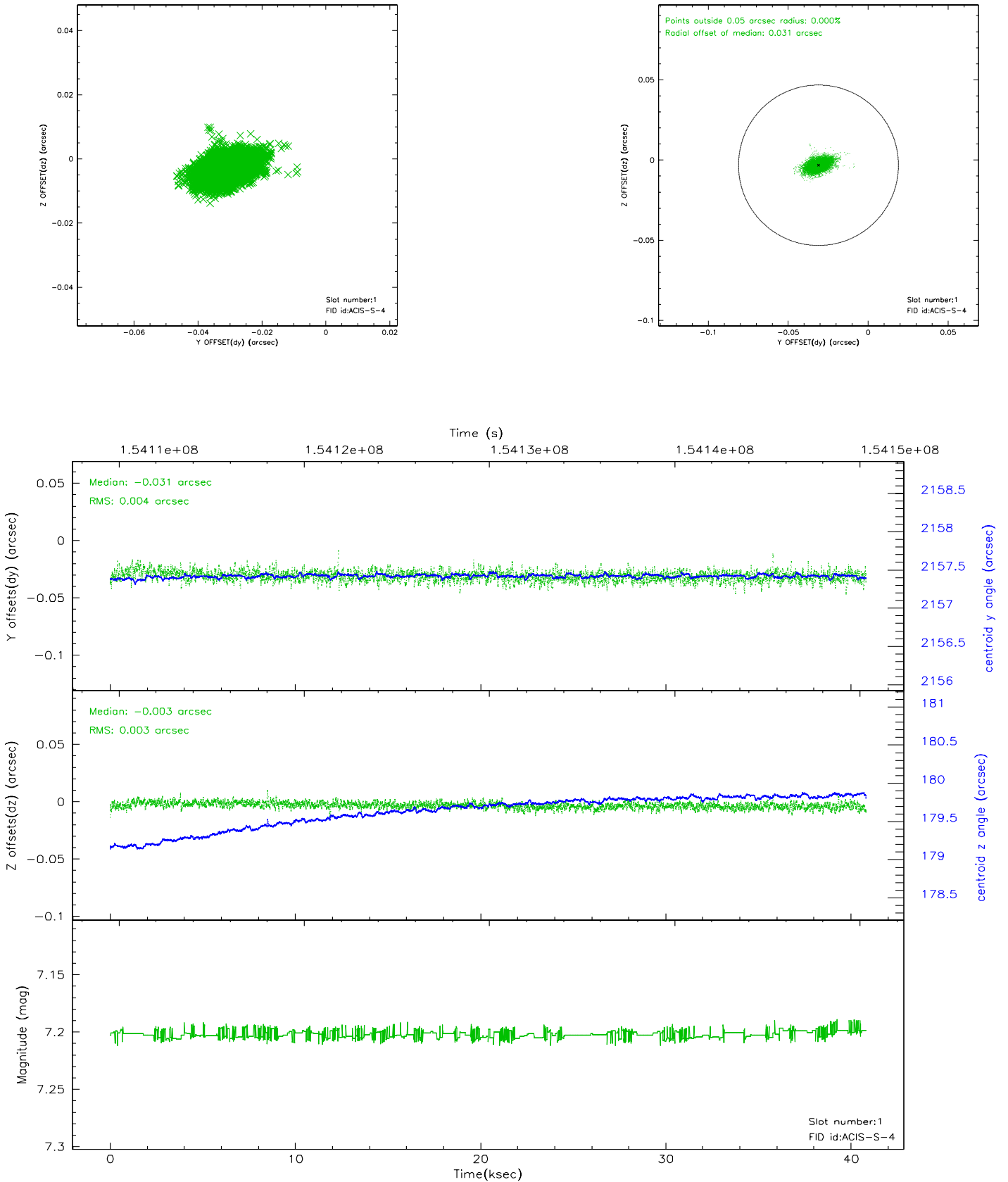


2.5 FID Slots

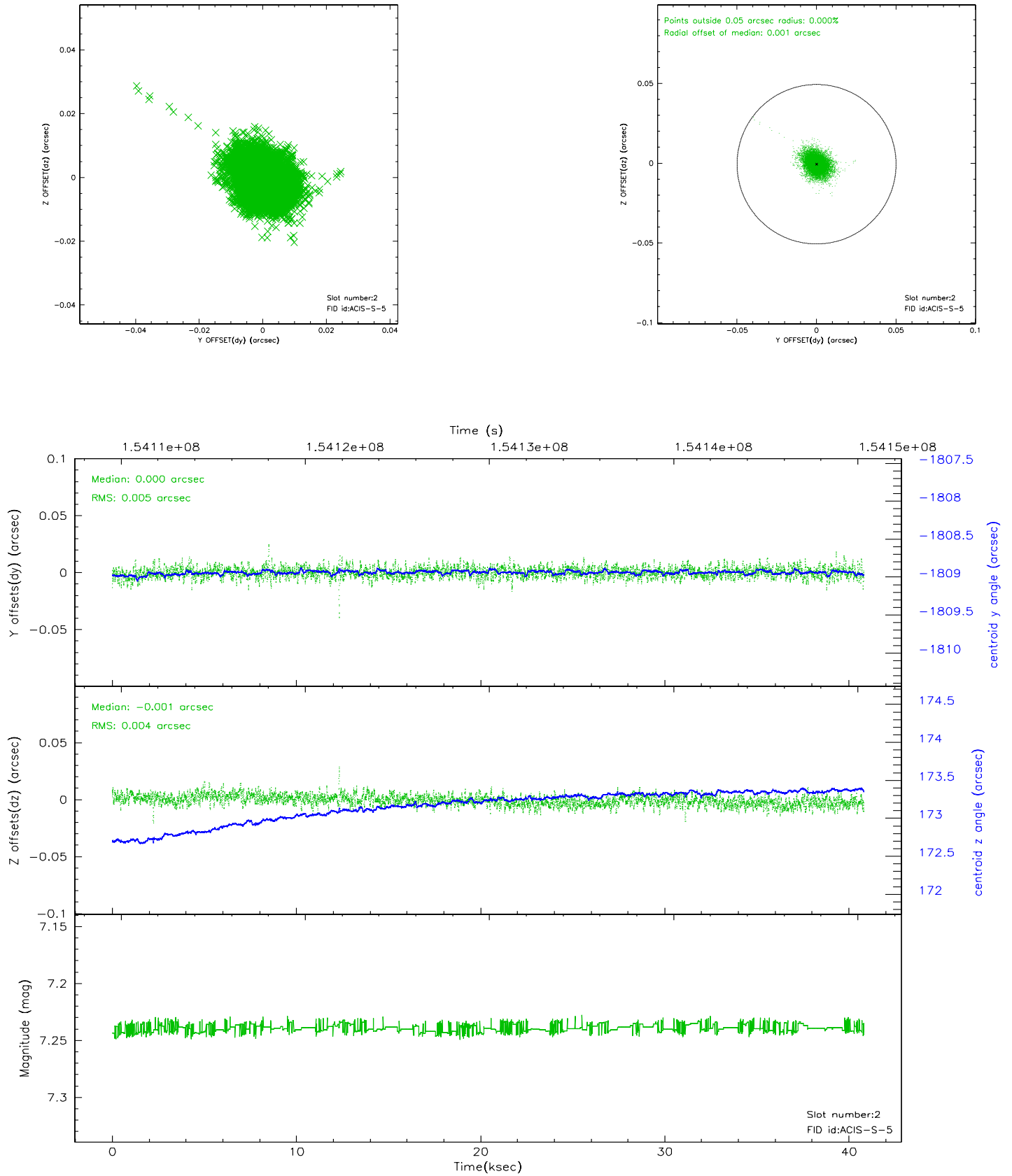
2.5.1 Slot 0



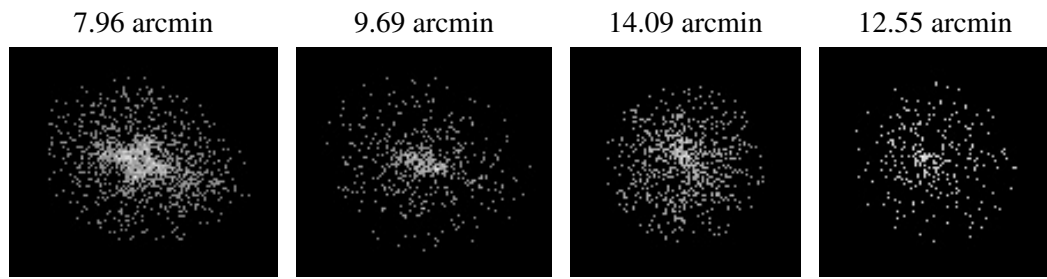
2.5.2 Slot 1



2.5.3 Slot 2



3 Point Sources



A Summary

A.1 Status

V&V Scientist	Beth Sundheim
V&V Date (YYYY-MM-DD)	2006.10.10
V&V Edition	1
V&V Disposition and Status	OK
V&V Charge Time	39.737

A.2 Comments

The guide star in slot 6 was excluded from the aspect solution due to poor data quality. The aspect solution is not expected to be degraded by removing one guide star from the solution.