

V&V Reference Report

L2 ASCDS Version : 8.4.5

Observation 3789 - L2 Version 3
Chandra X-Ray Center

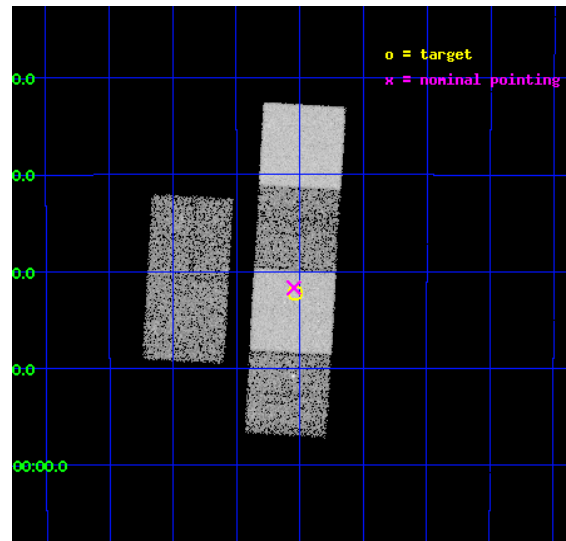
L2 Processing Date : Oct 23 2012

Contents

1	Front	2
2	OBI	3
2.1	OBI	3
2.1.1	Images	3
2.1.2	Bias	3
2.1.3	Parameters	4
2.1.4	Events	4
2.2	Compared Parameters	5
2.3	Aspect	6
2.4	Star Slots	9
2.4.1	Slot 3	9
2.4.2	Slot 4	10
2.4.3	Slot 5	11
2.4.4	Slot 6	12
2.4.5	Slot 7	13
2.5	FID Slots	14
2.5.1	Slot 0	14
2.5.2	Slot 1	15
2.5.3	Slot 2	16
A	Summary	17
A.1	Status	17
A.2	Comments	17

1 Front

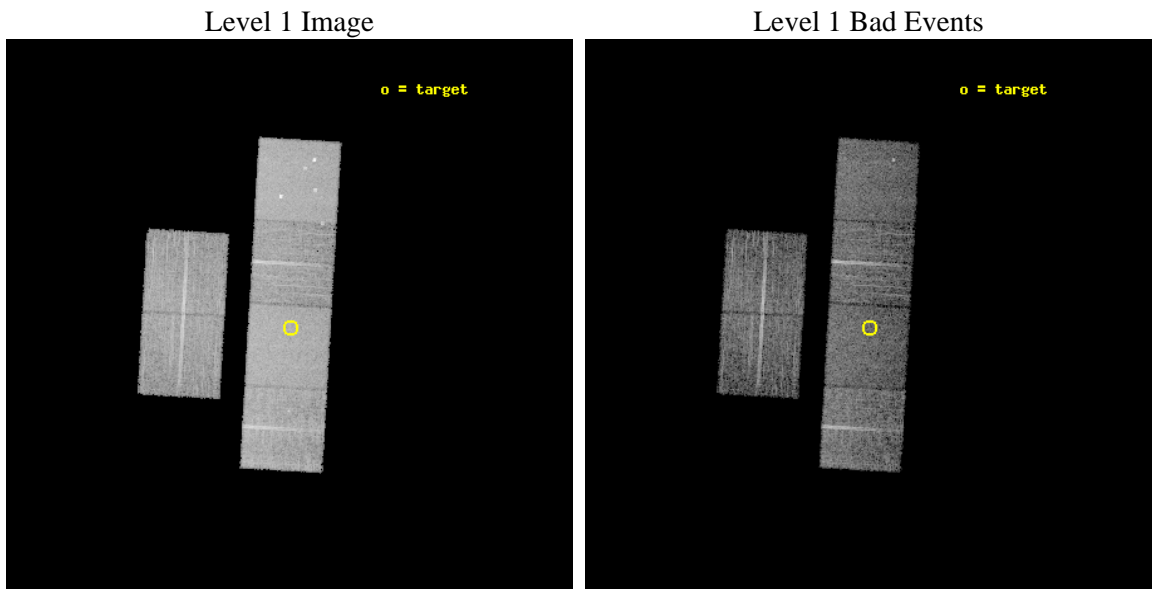
seq_num	400276	Sequence number
obs_id	3789	Observation id
title	FIRST X-RAY DETECTION OF AN ISOLATED BLACKHOLE CANDIDATE MACHO-96-BLG-5	Proposal title
observer	MR. YOSHIHITO KOBAYASHI	Principal investigator
object	MACHO-96-BLG-5	Source name
dtcycle	0	
cycle	P	events from which exps? Prim/Second/Both
ra_targ	271.260417	Observer's specified target RA [deg]
dec_targ	-27.704722	Observer's specified target Dec [deg]
ra_nom	271.26173036297	Nominal RA [deg]
dec_nom	-27.695096917619	Nominal Dec [deg]
roll_nom	93.30989906941	Nominal Roll [deg]
revision	3	Processing version of data
ontime	9955.1589926481	Sum of GTIs [s]
livetime	9829.1007752061	Livetime [s]
ontime2	9958.3999629021	Sum of GTIs [s]
ontime3	9958.3999629021	Sum of GTIs [s]
ontime5	9955.1590225697	Sum of GTIs [s]
ontime6	9958.3999629021	Sum of GTIs [s]
ontime7	9955.1589926481	Sum of GTIs [s]
ontime8	9958.3999629021	Sum of GTIs [s]
l2events	109485	Number of level 2 events



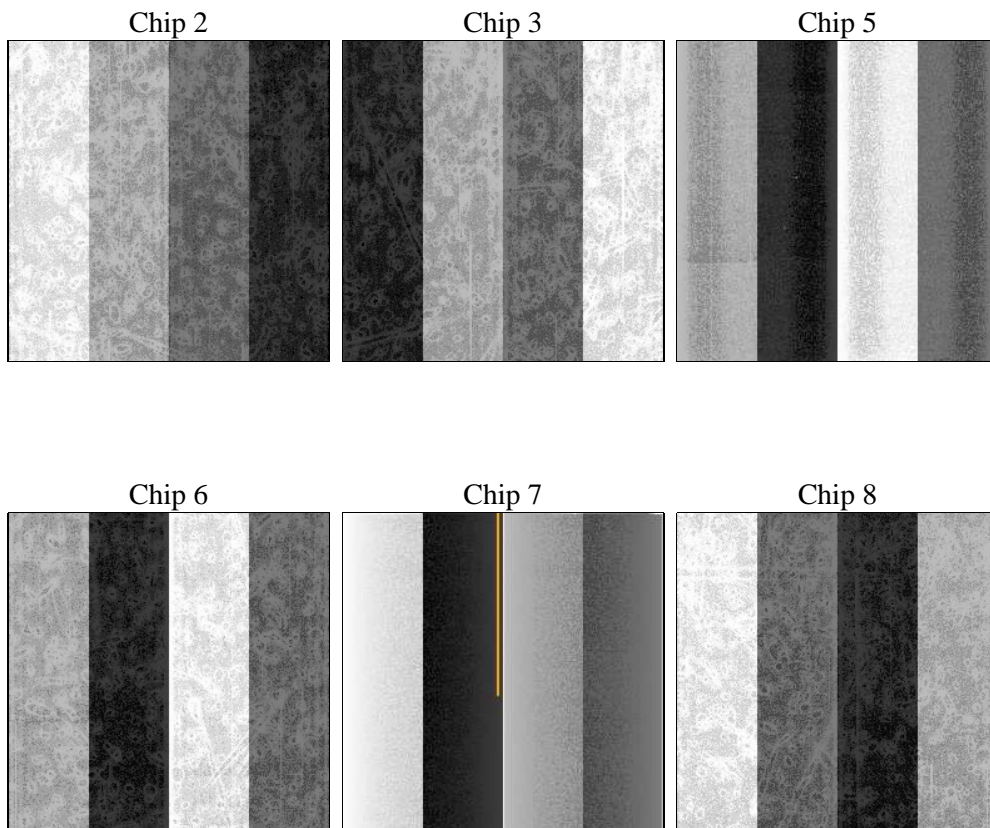
2 OBI

2.1 OBI

2.1.1 Images



2.1.2 Bias



2.1.3 Parameters

obi_num	0	Obi number	sched_exp_time	10000.000000	[s] Scheduled observation exposure time
ascdsver	8.4.5	Processing system revision	ontime	9955.1589926481	Sum of GTIs [s]
caldsver	4.5.2	 	ontime2	9958.3999629021	Sum of GTIs [s]
date	2012-10-23T09:11:14	Date and time of file creation	ontime3	9958.3999629021	Sum of GTIs [s]
revision	3	Processing version of data	ontime5	9955.1590225697	Sum of GTIs [s]
			ontime6	9958.3999629021	Sum of GTIs [s]
			ontime7	9955.1589926481	Sum of GTIs [s]
			ontime8	9958.3999629021	Sum of GTIs [s]
			l1events	447223	Number of level 1 events

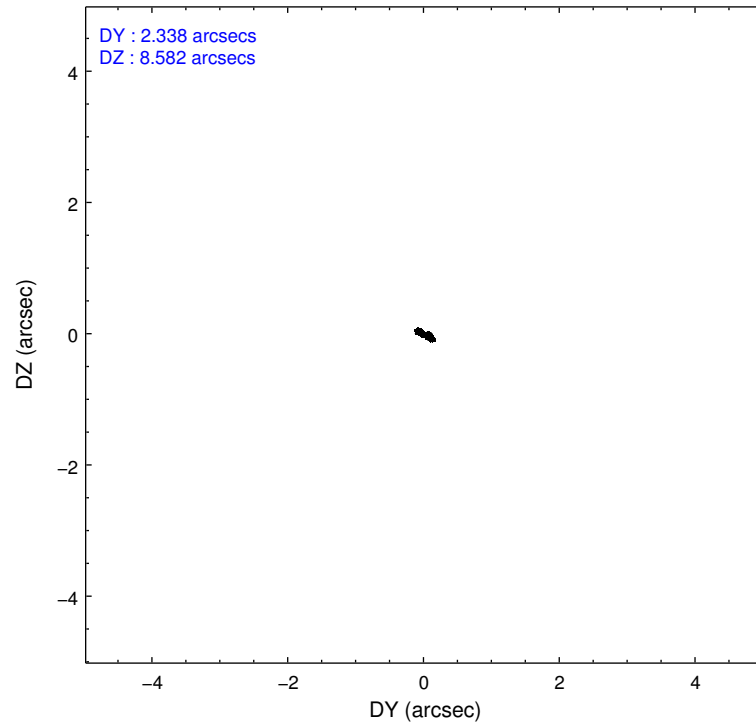
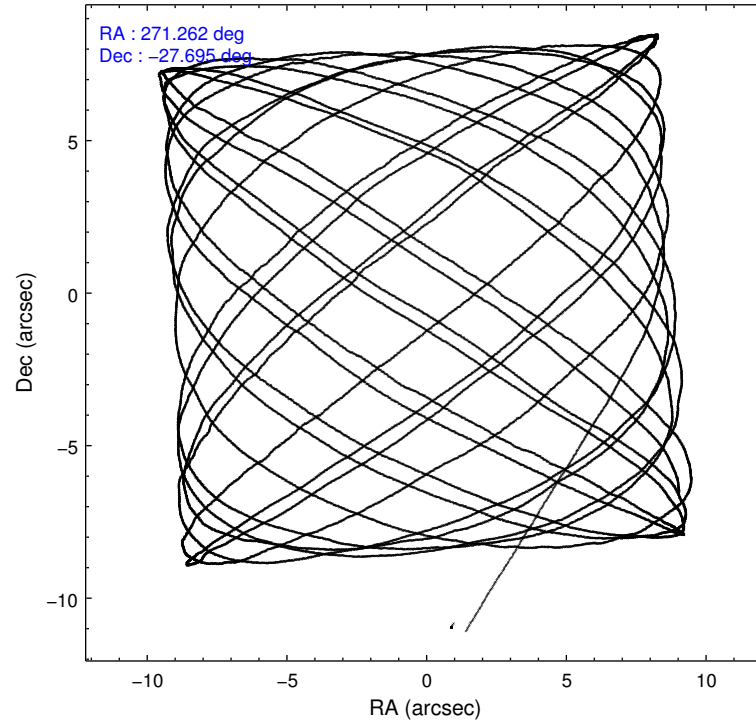
2.1.4 Events

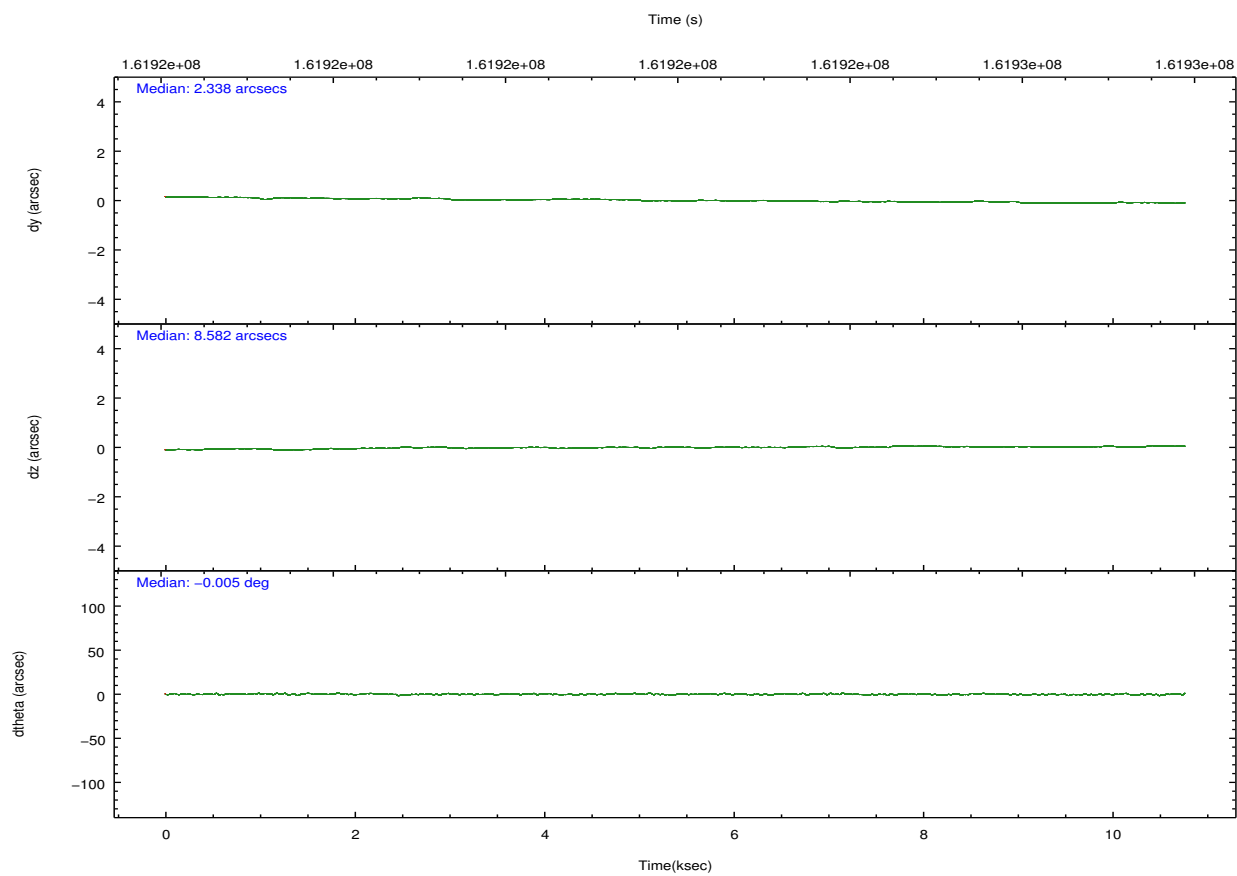
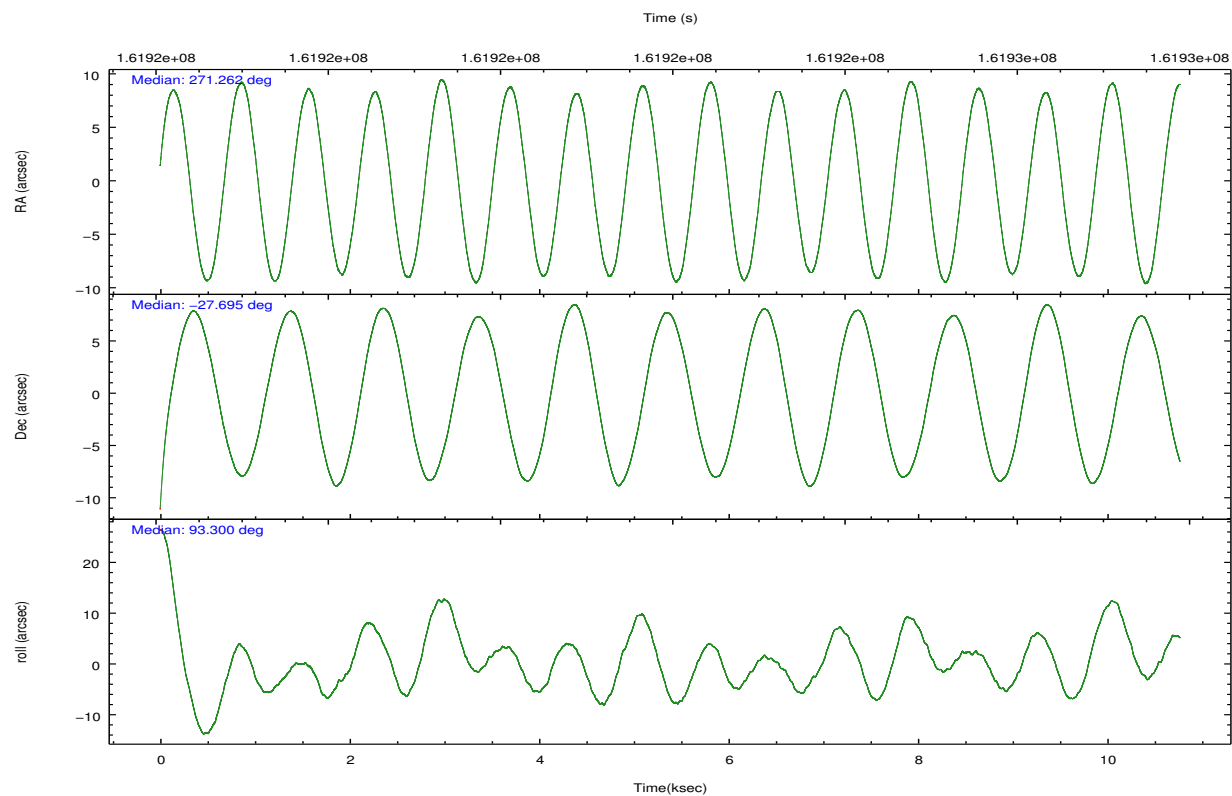
	ccd 2	ccd 3	ccd 5	ccd 6	ccd 7	ccd 8		ccd 2	ccd 3	ccd 5	ccd 6	ccd 7	ccd 8
level 1 events	64978	59634	94364	63016	85161	80070	grade 0 events	4492	4483	6721	4490	4044	6717
rejected events	56348	50978	48838	53981	47899	62437		6%	7%	7%	7%	4%	8%
rejected %	86%	85%	51%	85%	56%	77%	grade 1 events	47	41	149	29	95	50
								0%	0%	0%	0%	0%	0%
							grade 2 events	1502	1376	13015	1622	7464	3559
								2%	2%	13%	2%	8%	4%
							grade 3 events	733	731	1918	732	3485	1743
								1%	1%	2%	1%	4%	2%
							grade 4 events	691	744	1859	746	3469	1683
								1%	1%	1%	1%	4%	2%
							grade 5 events	2462	2644	6592	2684	7675	3651
								3%	4%	6%	4%	9%	4%
							grade 6 events	1214	1334	22024	1453	18817	3940
								1%	2%	23%	2%	22%	4%
							grade 7 events	53837	48281	42086	51260	40112	58727
								82%	80%	44%	81%	47%	73%

2.2 Compared Parameters

Parameter	Planned	Actual	Parameter	Planned	Actual
Instrument	ACIS	ACIS	Obspar format version number	7	7
Detector	ACIS-235678	ACIS-235678	Obspar file type	PREDICTED	ACTUAL
Grating	NONE	NONE	Obspar update status	NONE	UPDATED
Data mode	FAINT	FAINT	Number of optional ACIS chips dropped	0	0
Observation mode	POINTING	POINTING	On-chip summing requested	N	N
[deg] Pointing RA	271.278945	271.2617303629654	Subarray requested	NONE	NONE
[deg] Pointing Dec	-27.717671	-27.69509691761877	Alternating exposures requested	N	N
[deg] Pointing Roll	93.161268	93.30989906941008	[s] Primary exposure time	0.000000	3.2
[mm] SIM focus pos	-0.684267	-0.6828225247311905			
[mm] SIM defocus	0	0.001444936568705701			
[mm] SIM translation stage pos	-190.132523	-190.1425803651734			
[mm] SIM translation stage offset	0	0.01005778216563158			
[s] Observation start time (MET)	161917352.184000	161916102.56618			
Observation start date	2003-02-18T01:01:28	2003-02-18T00:41:42			
[s] Observation end time (MET)	161927352.184000	161928028.44168			
Observation end date	2003-02-18T03:48:08	2003-02-18T04:00:28			
Read mode	TIMED	TIMED			

2.3 Aspect



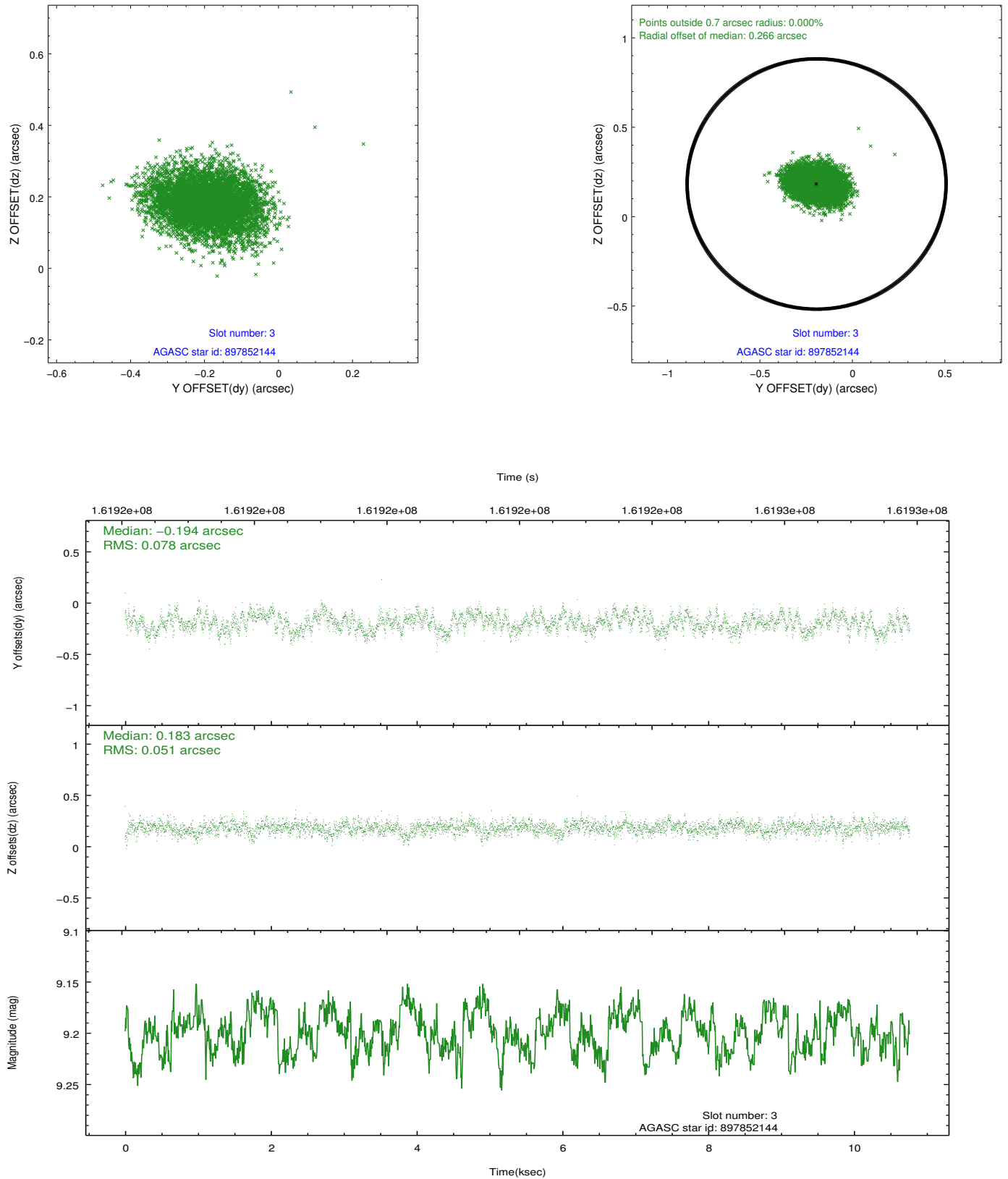


Slot Statistics

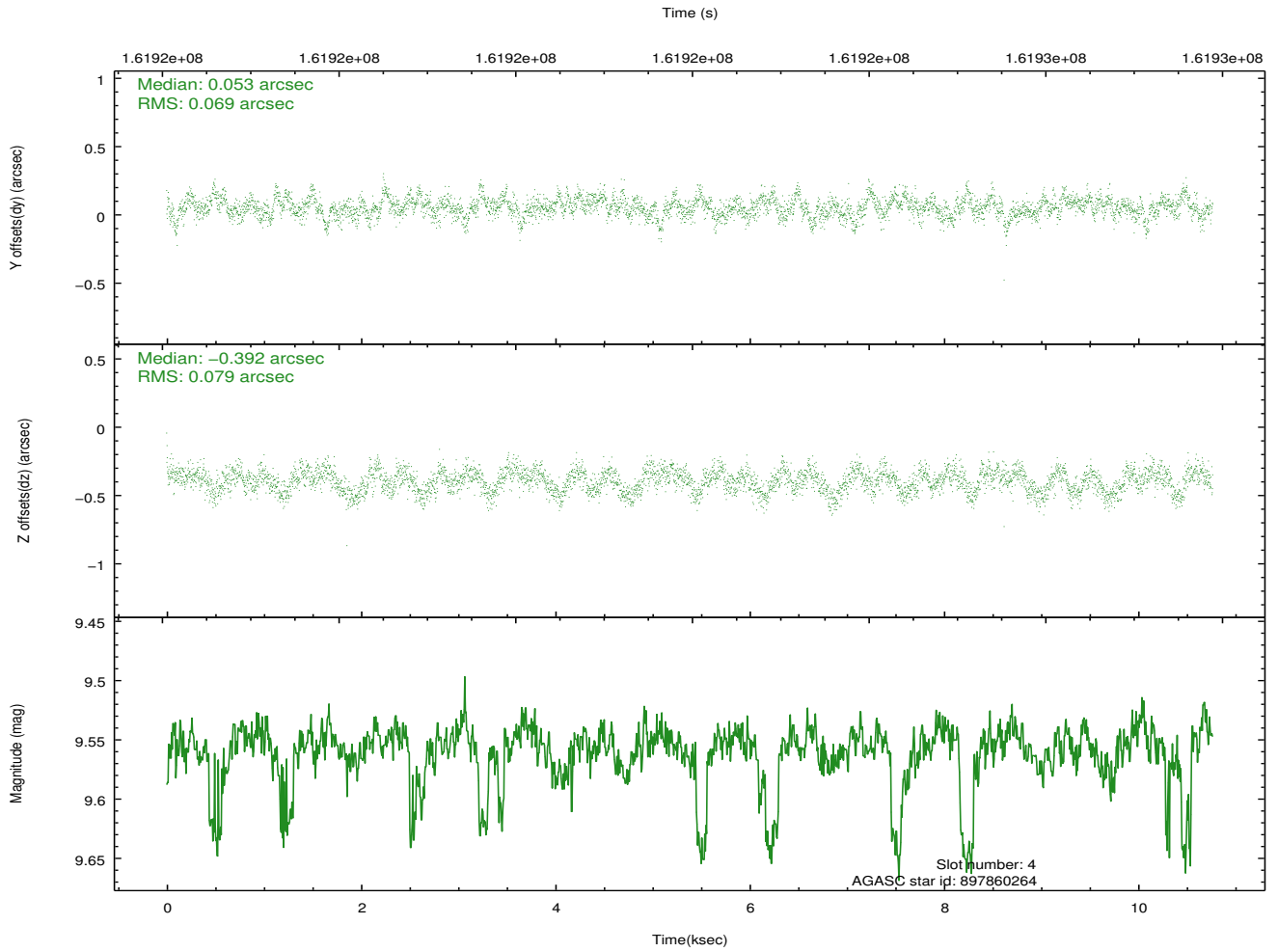
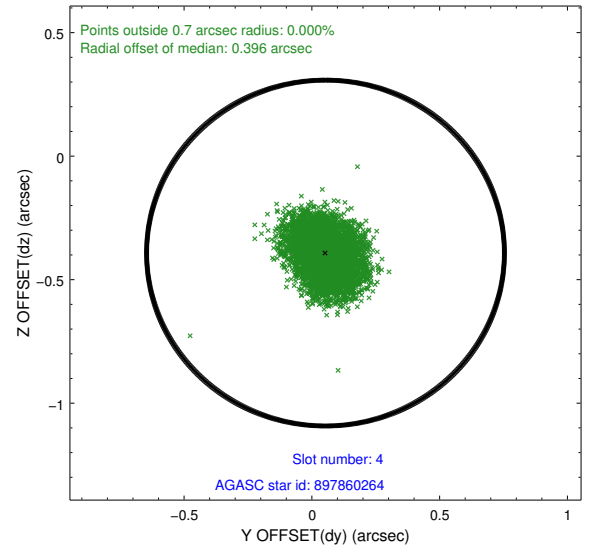
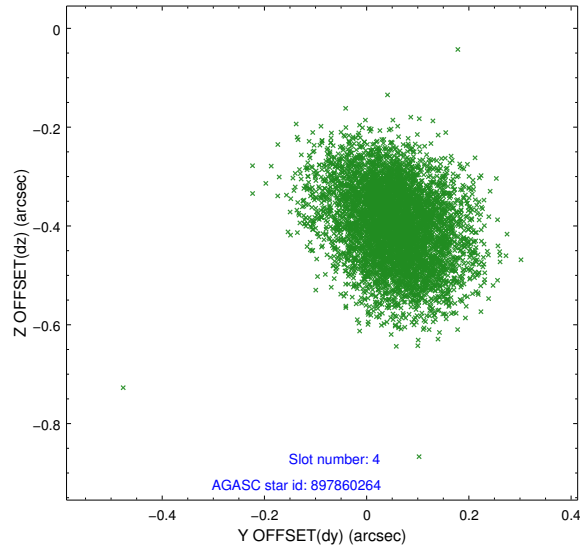
slot	status	id	mag	n_pts	med_dy	med_dz	dr1	dr2	ra	dec	mean_y	mean_z
0	FID	ACIS-S-1	7.19	2627	0.024	0.014	0.007	0.012	0.000000	0.000000	941.07	-1725.35
1	FID	ACIS-S-5	7.24	2625	-0.009	0.041	0.007	0.012	0.000000	0.000000	-1807.67	171.76
2	FID	ACIS-S-6	7.36	2626	-0.036	-0.044	0.007	0.012	0.000000	0.000000	406.07	816.16
3	GUIDE	897852144	9.20	5252	-0.194	0.183	0.099	0.160	271.756846	-27.102058	2125.69	-1650.79
4	GUIDE	897860264	9.56	5232	0.053	-0.392	0.112	0.181	270.635722	-27.877873	-468.12	2075.05
5	GUIDE	897853104	9.66	5209	0.068	-0.193	0.114	0.185	270.863642	-27.550635	671.15	1290.85
6	GUIDE	897852944	9.51	5229	-0.160	0.160	0.134	0.215	271.476011	-27.063612	2315.91	-759.84
7	GUIDE	898380696	9.94	5239	0.237	0.240	0.104	0.170	271.743693	-28.278007	-2097.20	-1360.13

2.4 Star Slots

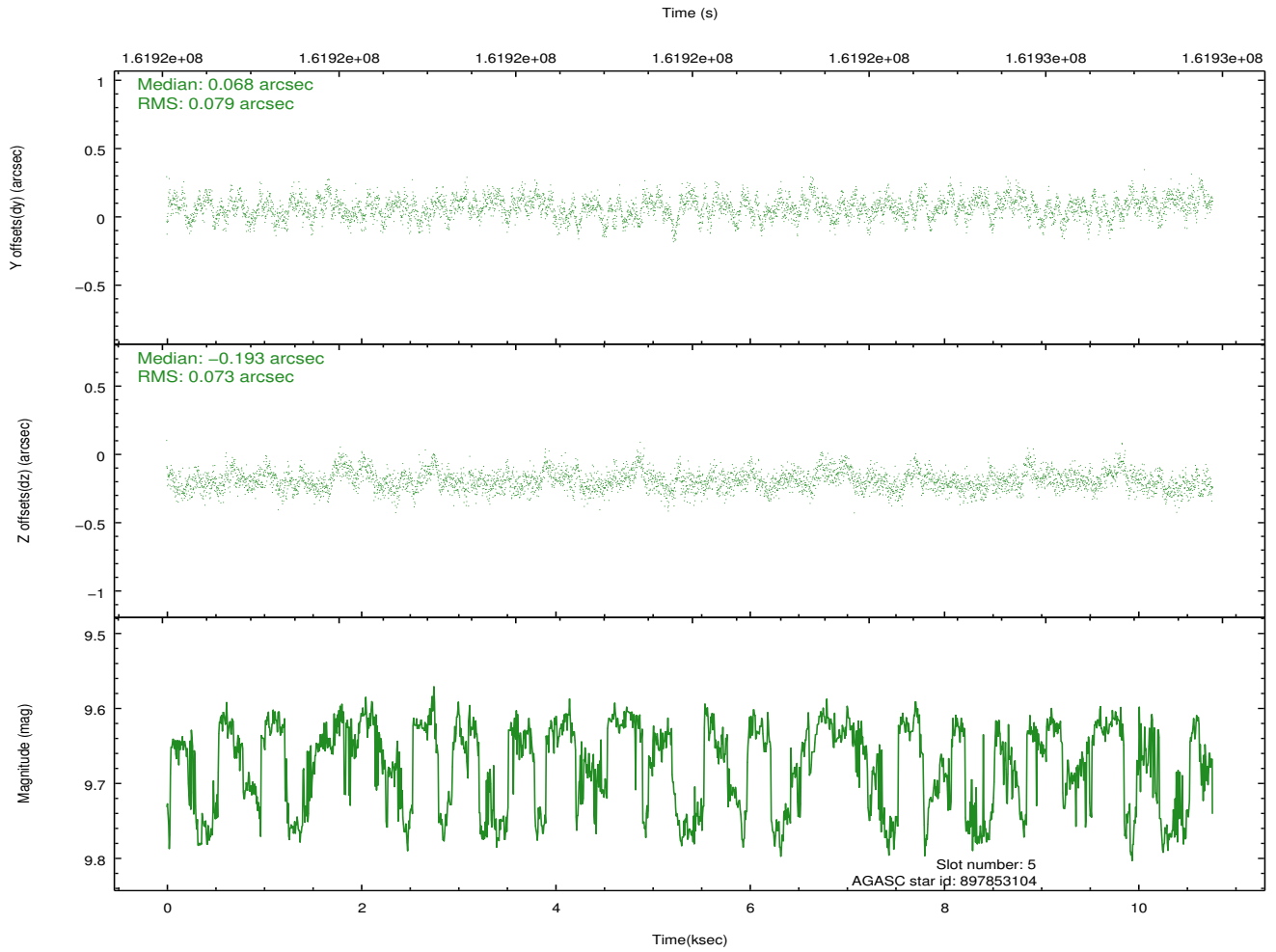
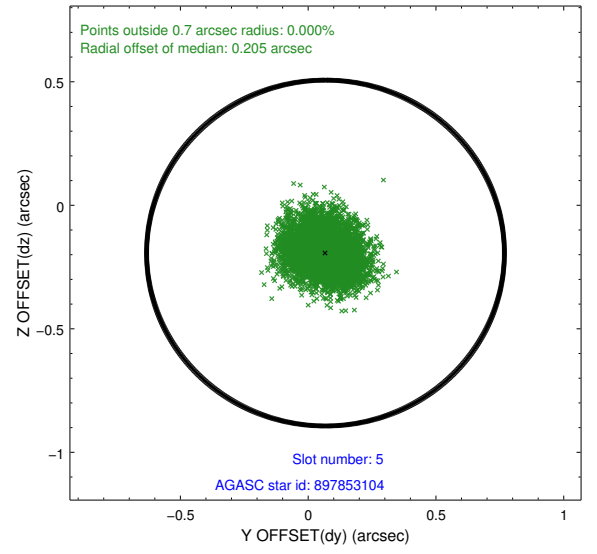
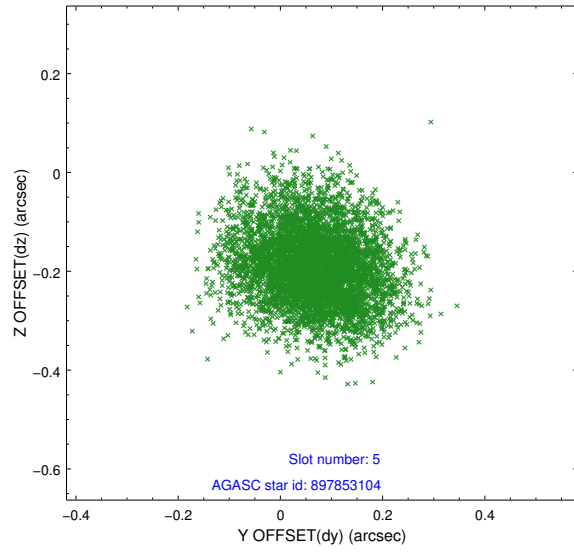
2.4.1 Slot 3



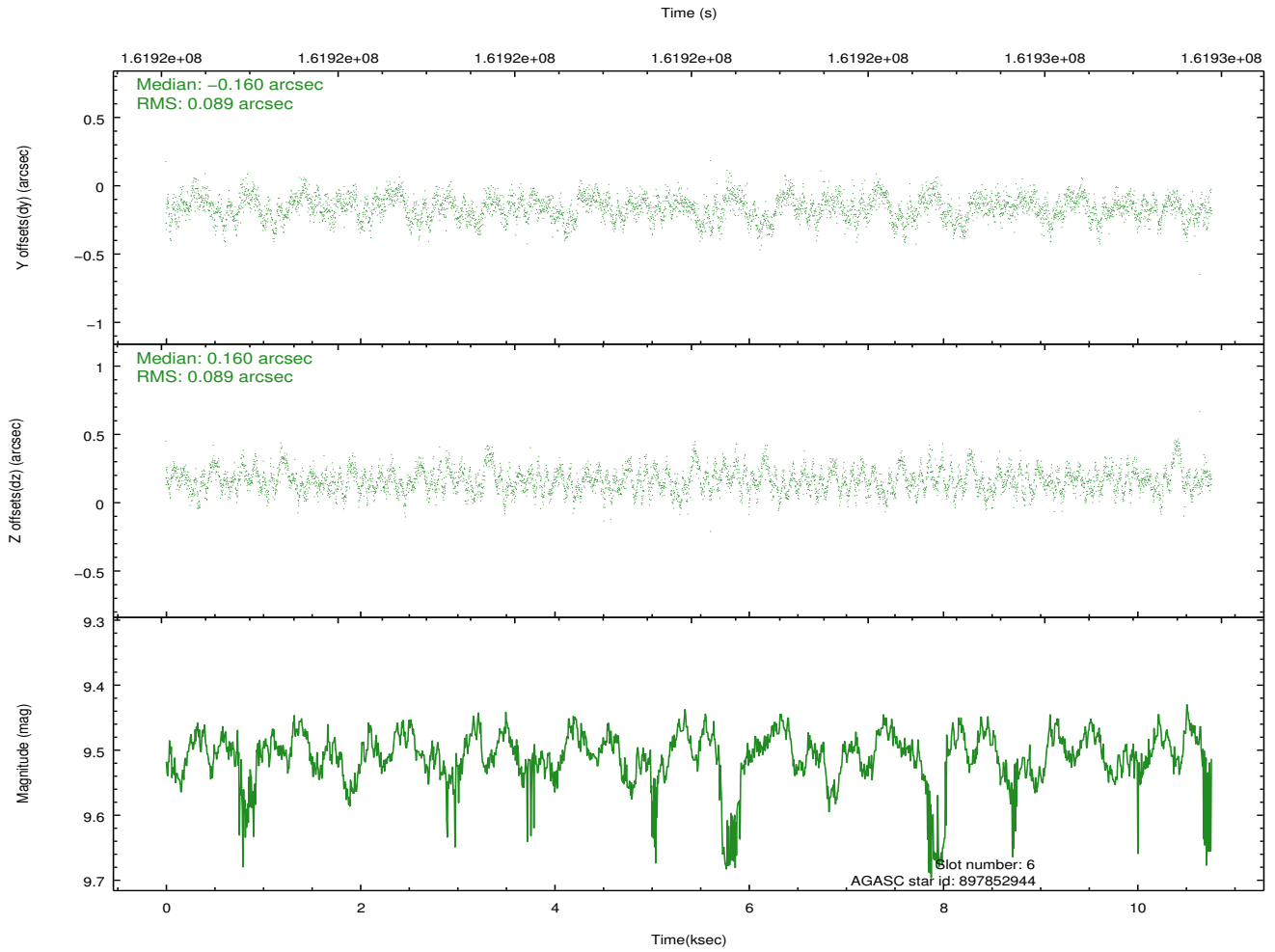
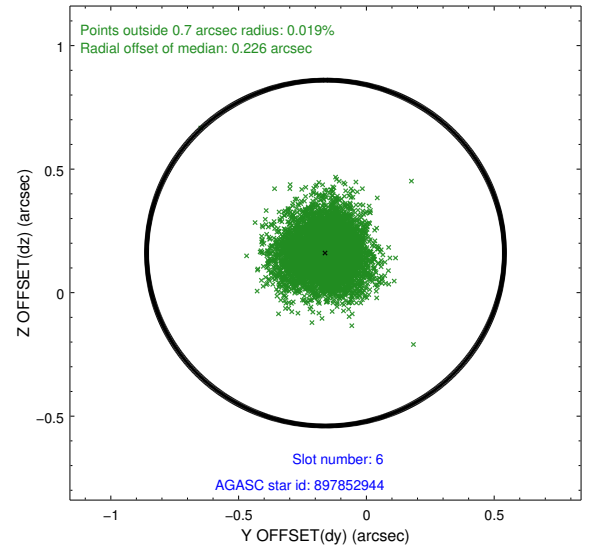
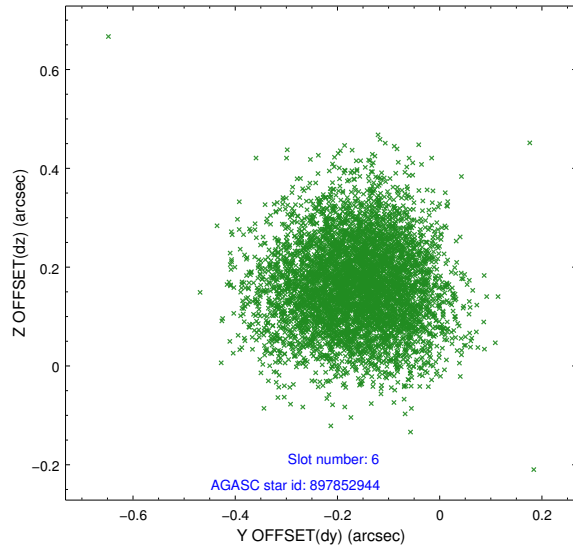
2.4.2 Slot 4



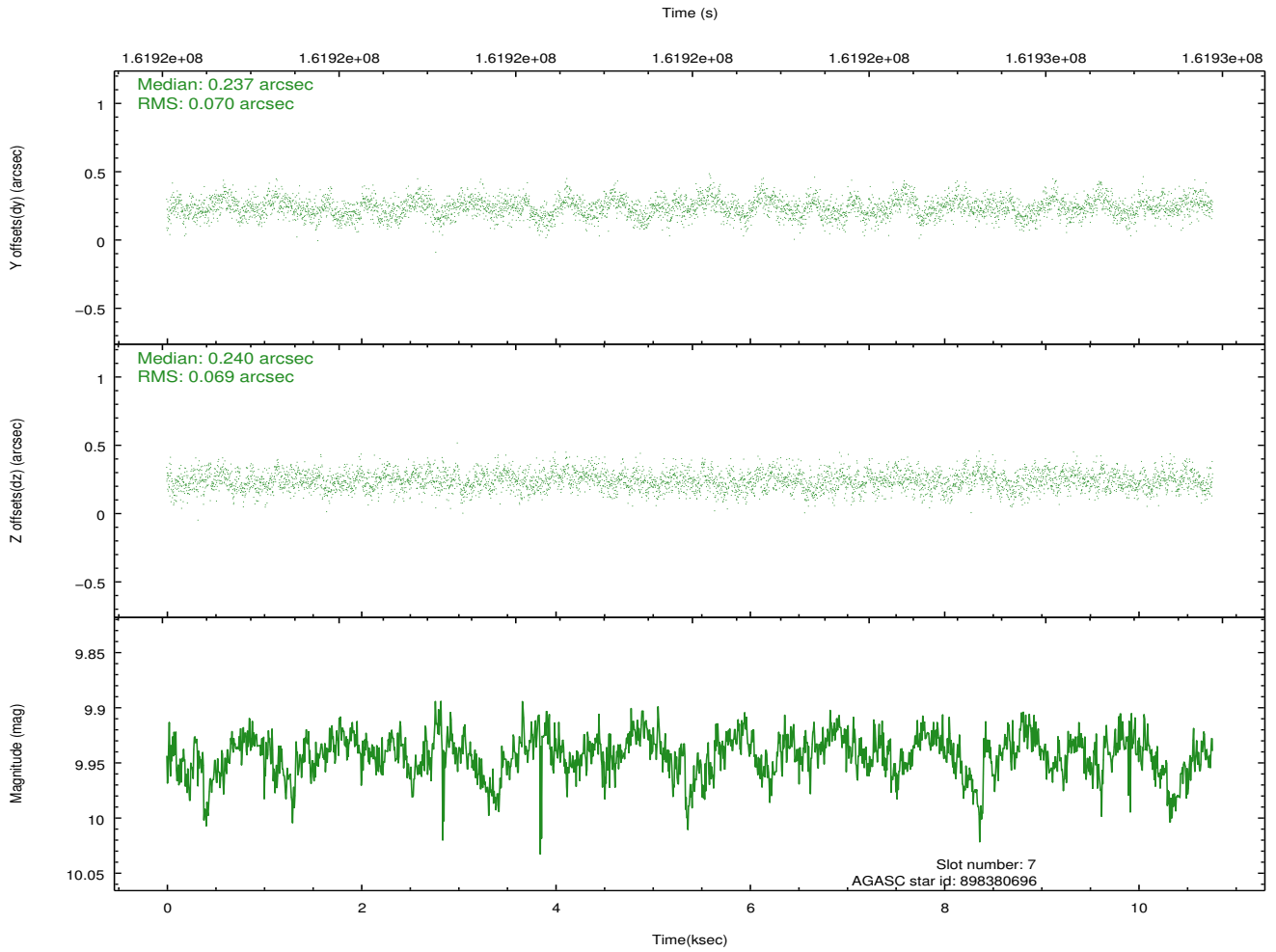
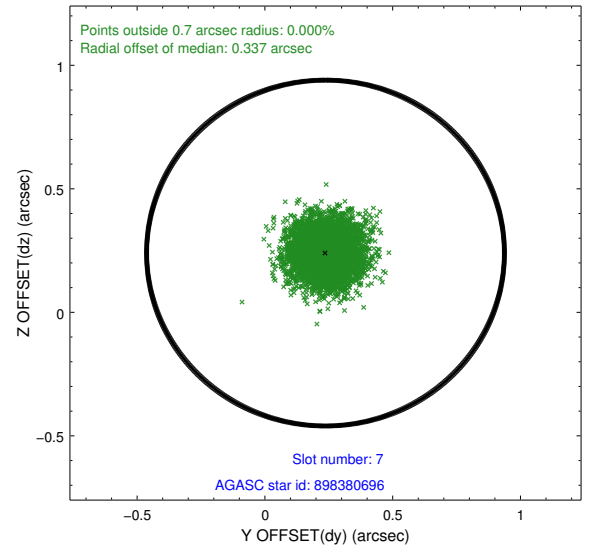
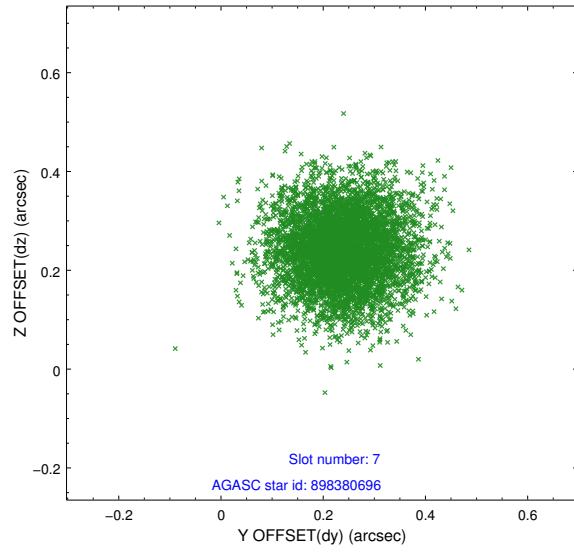
2.4.3 Slot 5



2.4.4 Slot 6

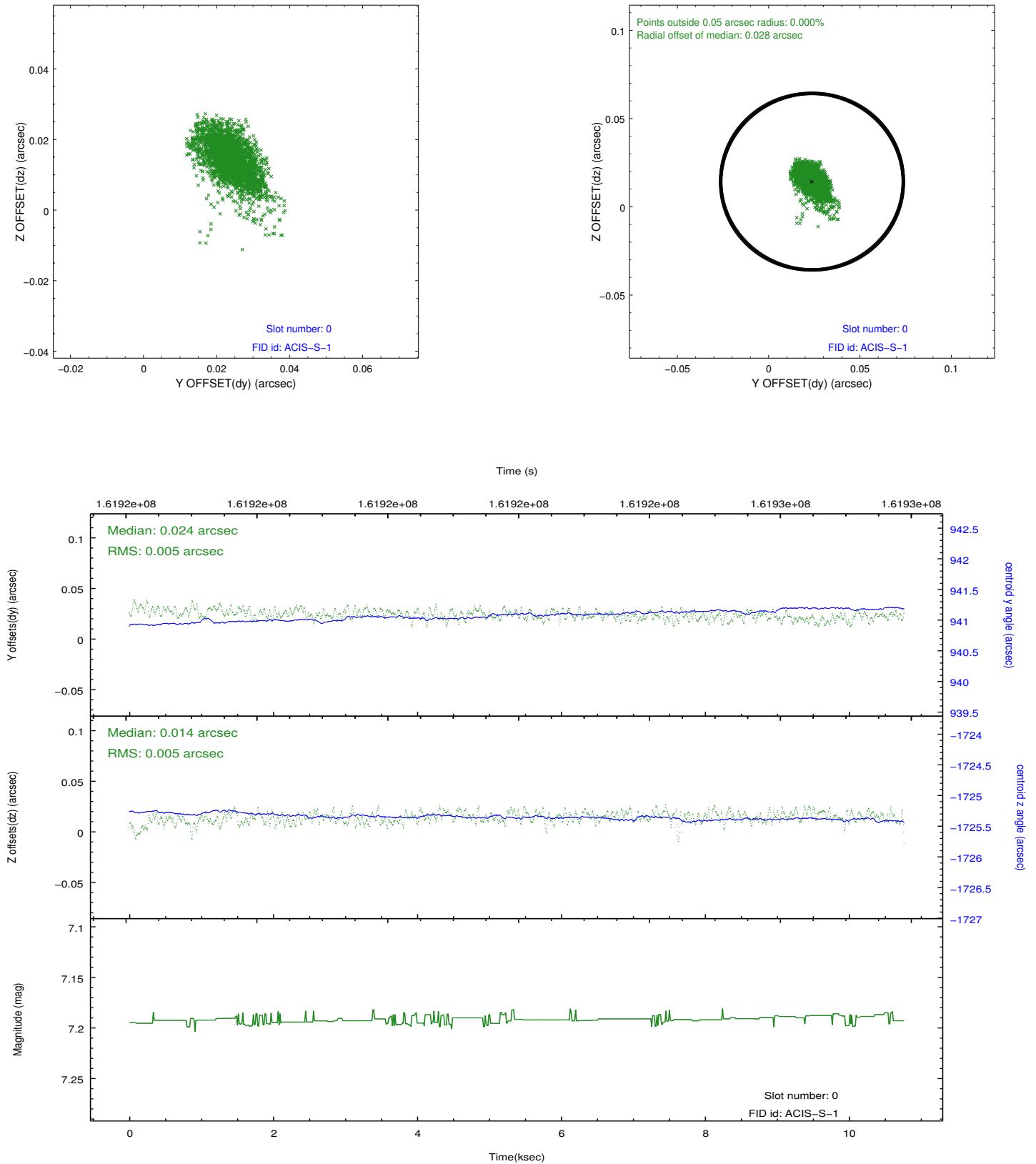


2.4.5 Slot 7

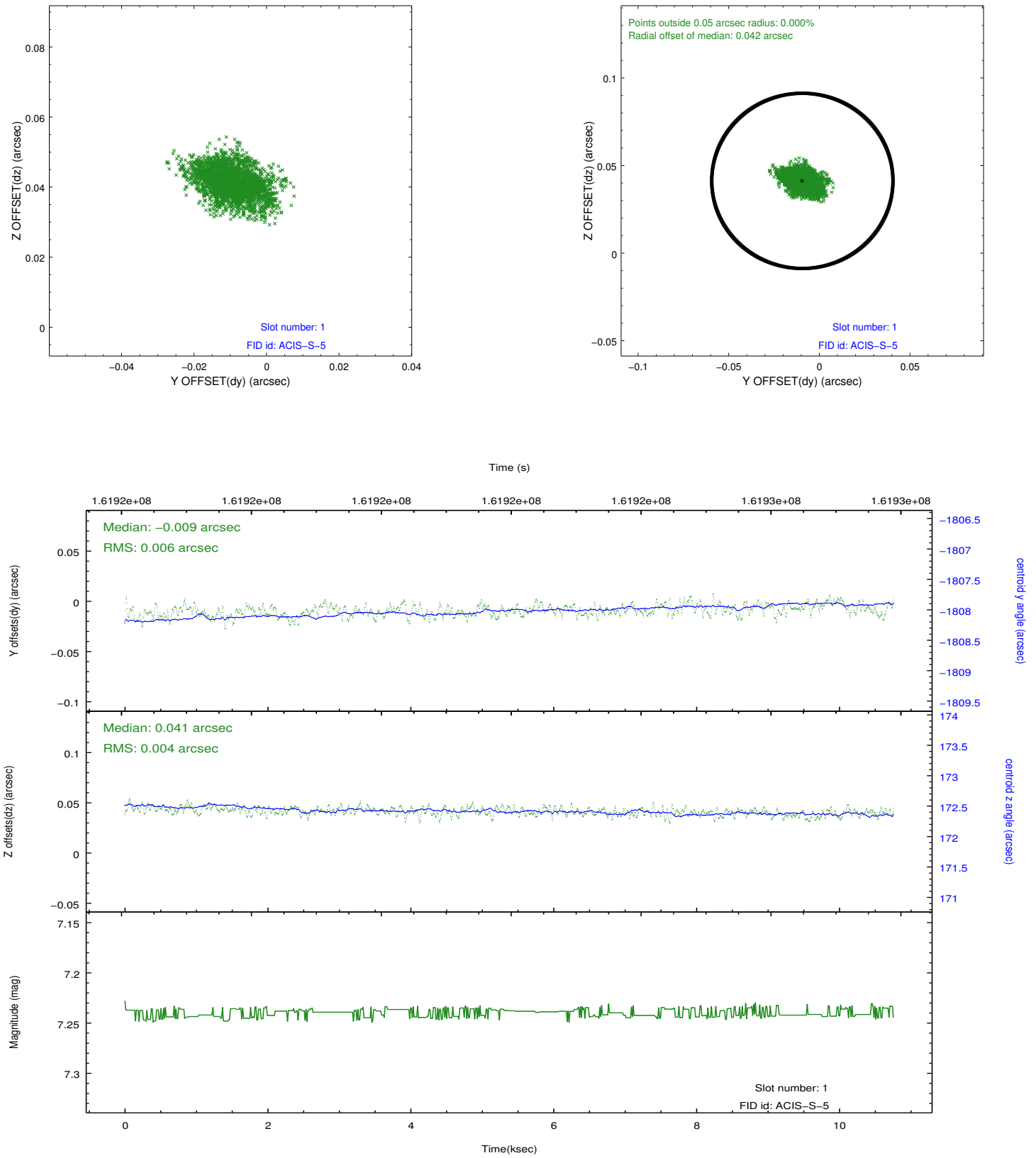


2.5 FID Slots

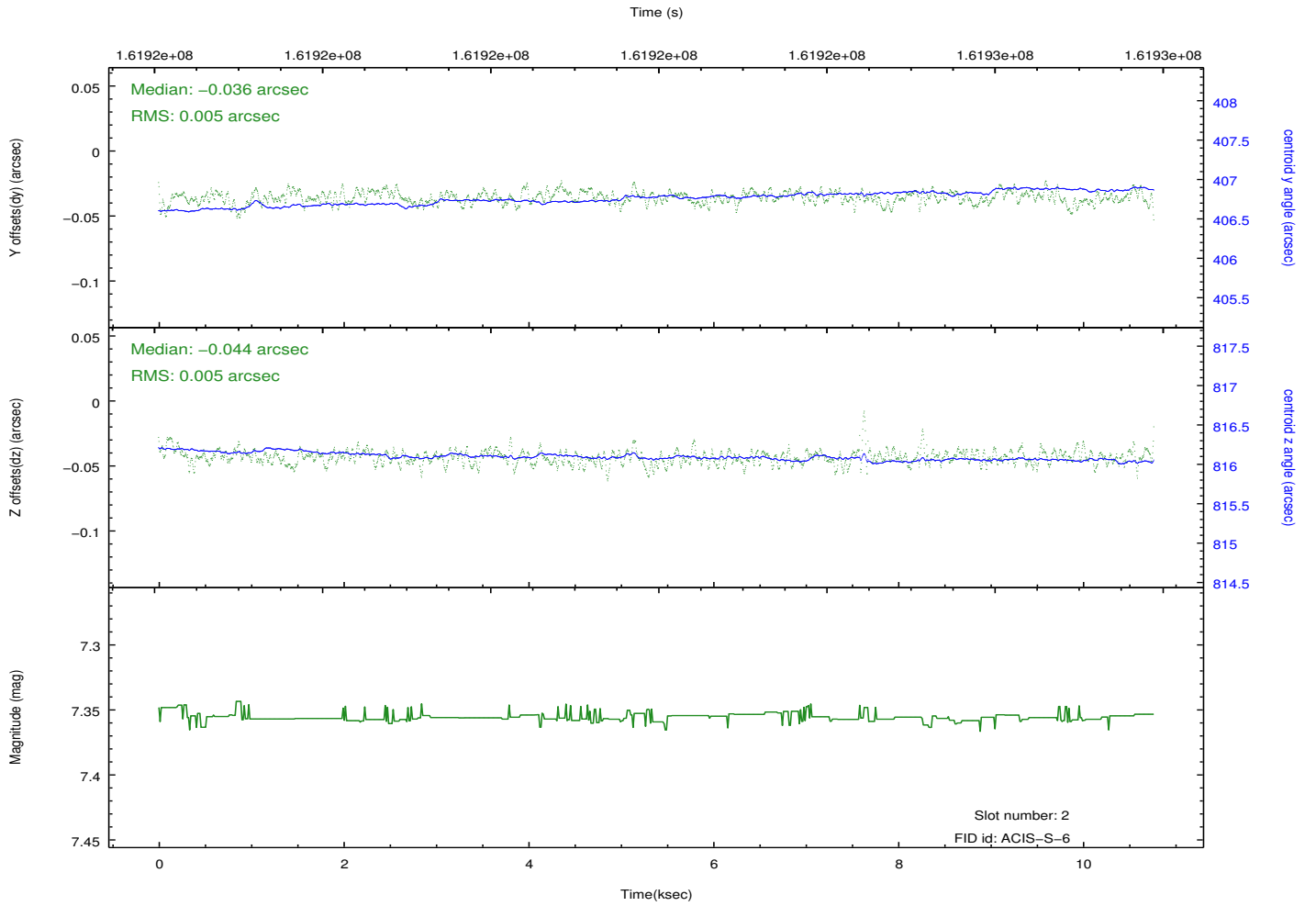
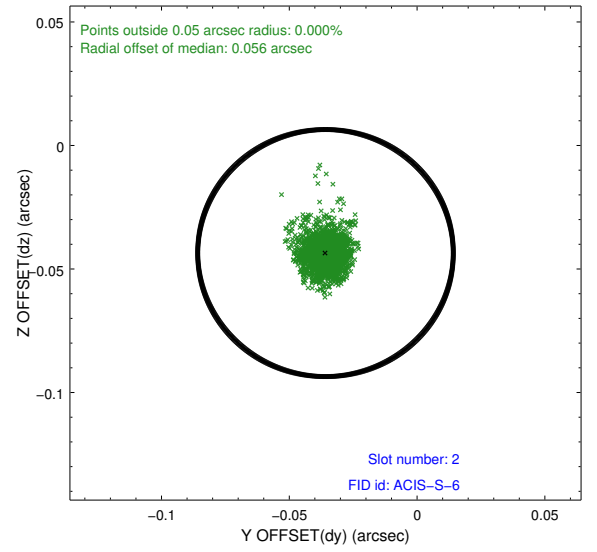
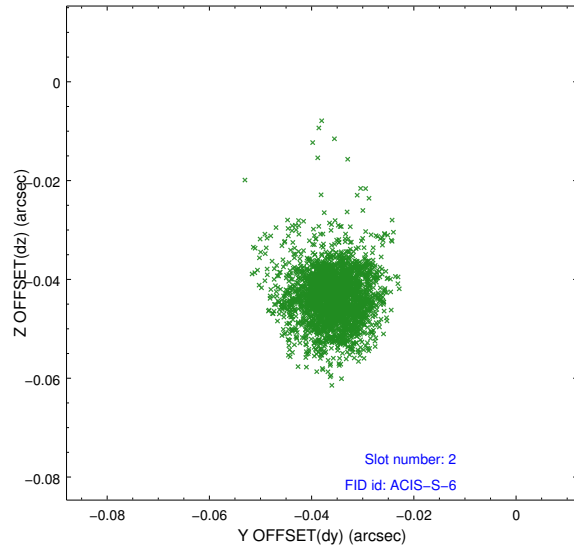
2.5.1 Slot 0



2.5.2 Slot 1



2.5.3 Slot 2



A Summary

A.1 Status

V&V Scientist	Jen Lauer
V&V Date (YYYY-MM-DD)	2012.11.06
V&V Edition	1
V&V Disposition and Status	OK
V&V Charge Time	9.958

A.2 Comments