

# V&V Reference Report

## L2 ASCDS Version : 7.6.9

Observation 3709 - L2 Version 001  
Chandra X-Ray Center

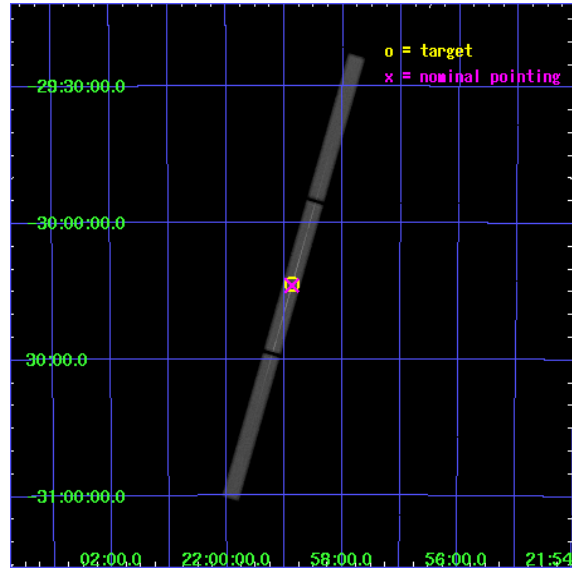
L2 Processing Date : Oct 13 2006

## Contents

<b>1</b>	<b>Front</b>	<b>2</b>
<b>2</b>	<b>OBI</b>	<b>3</b>
2.1	OBI . . . . .	3
2.1.1	Images . . . . .	3
2.1.2	Parameters . . . . .	4
2.1.3	Events . . . . .	4
2.2	Compared Parameters . . . . .	5
2.3	Aspect . . . . .	6
2.4	Star Slots . . . . .	9
2.4.1	Slot 3 . . . . .	9
2.4.2	Slot 4 . . . . .	10
2.4.3	Slot 5 . . . . .	11
2.4.4	Slot 6 . . . . .	12
2.4.5	Slot 7 . . . . .	13
2.5	FID Slots . . . . .	14
2.5.1	Slot 0 . . . . .	14
2.5.2	Slot 1 . . . . .	15
2.5.3	Slot 2 . . . . .	16
<b>3</b>	<b>Gratings</b>	<b>17</b>
3.1	LETG Arm . . . . .	17
<b>A</b>	<b>Summary</b>	<b>19</b>
A.1	Status . . . . .	19
A.2	Comments . . . . .	19

# 1 Front

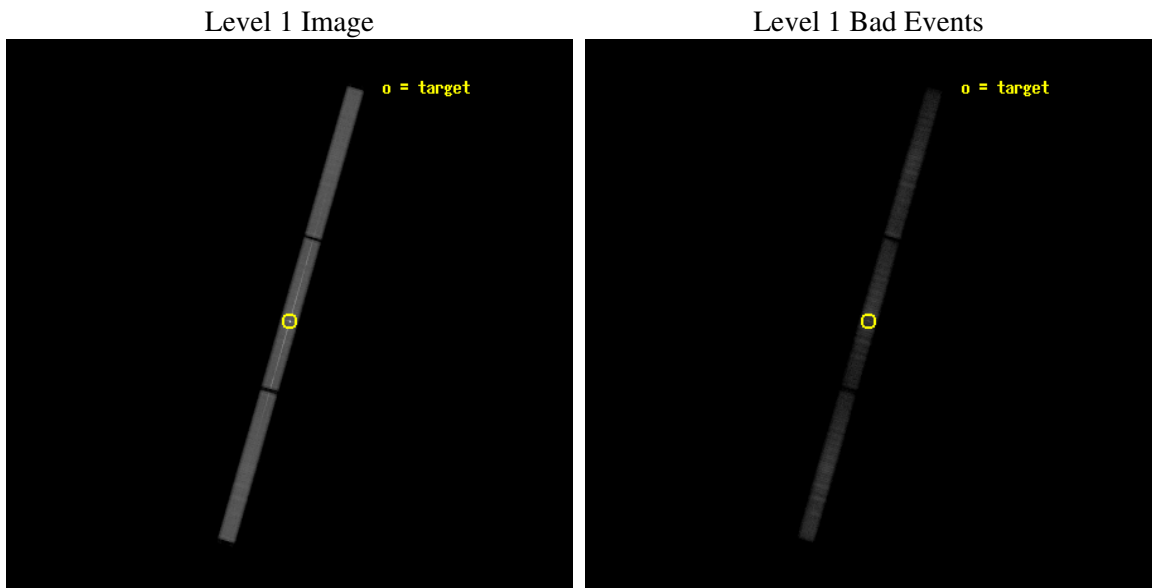
seq_num	790085
obs_id	3709
title	AO4 CALIBRATION OBSERVATIONS OF PKS2155-304
observer	Dr. CXC Calibration
object	PKS2155-304
ra_targ	329.716667
dec_targ	-30.225556
ra_nom	329.71810098952
dec_nom	-30.230063302873
roll_nom	286.09108023587
revision	2
ontime	13831.606826633
livetime	13738.870163507
l2events	716208



## 2 OBI

### 2.1 OBI

#### 2.1.1 Images



### 2.1.2 Parameters

obi_num	1
ascdsver	7.6.9
caldbver	3.2.3
date	2006-10-13T16:40:39
revision	2

sched_exp_time	14000.000000
ontime	13911.300579965
l1events	1024126

### 2.1.3 Events

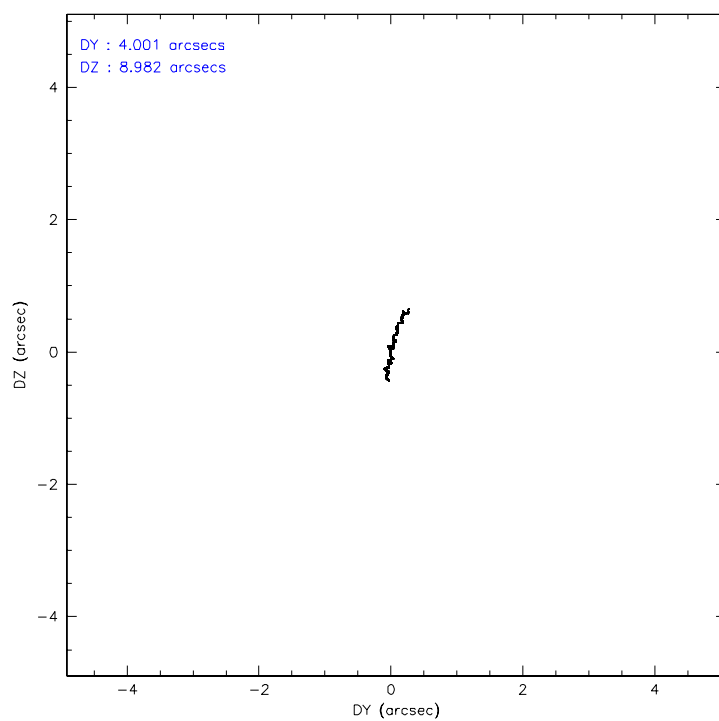
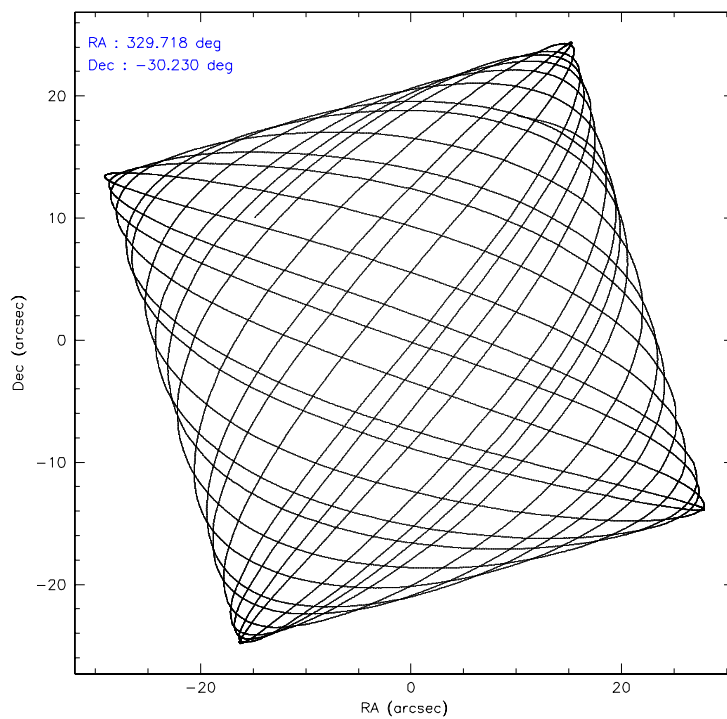
Level 1 Events

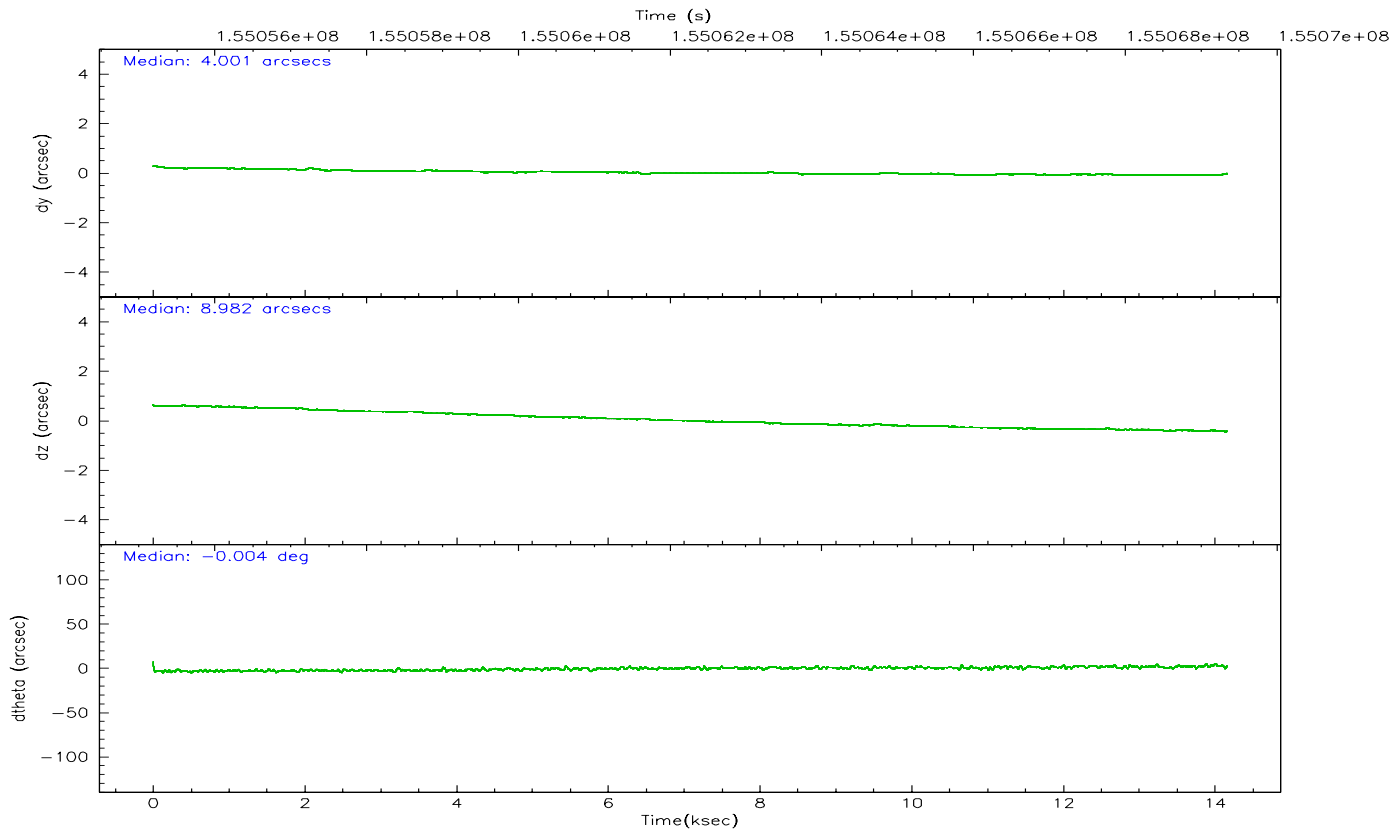
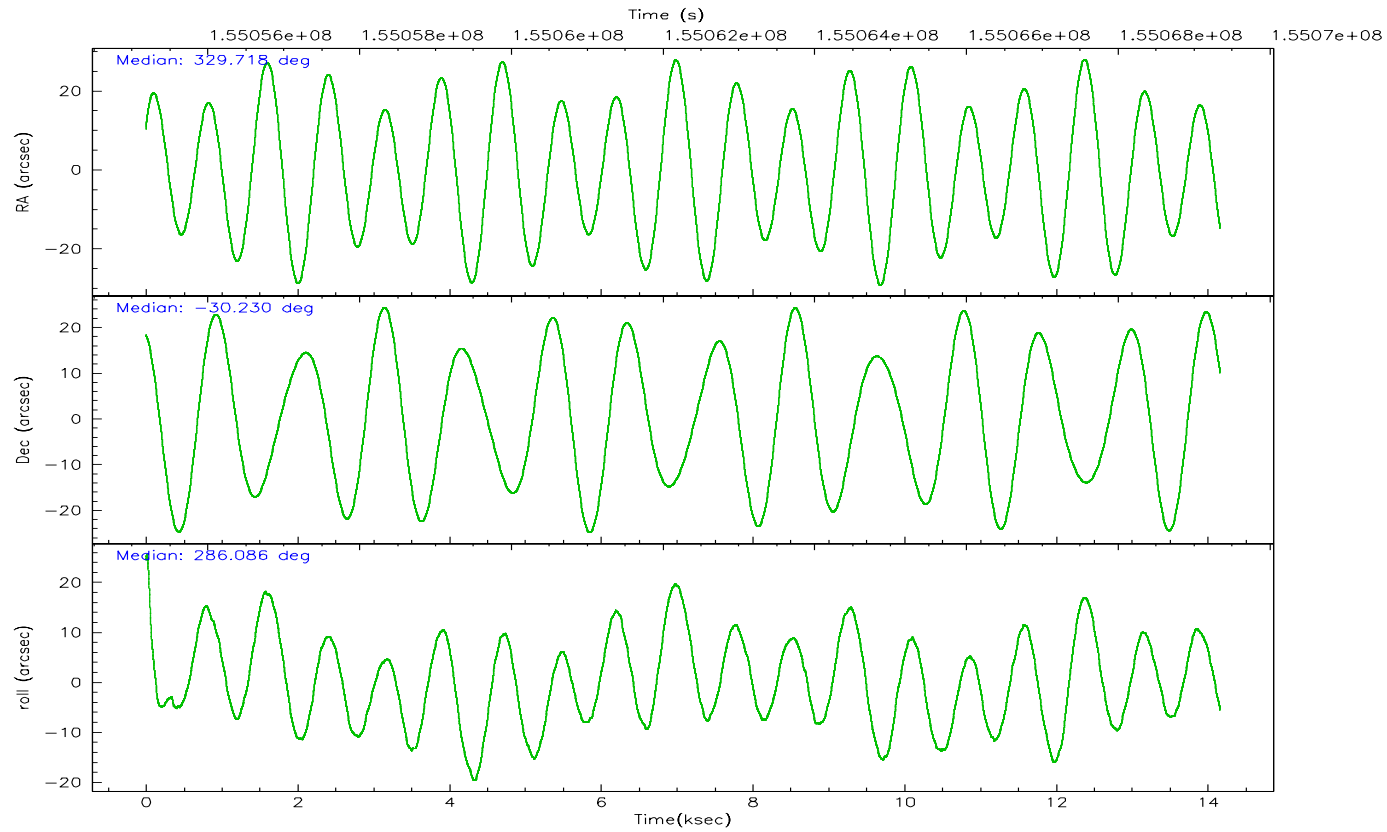
	<b>segment 1</b>	<b>segment 2</b>	<b>segment 3</b>
level 1 events	327859	373726	322541
rejected events	68127	73507	81854
rejected %	20%	19%	25%

## 2.2 Compared Parameters

Parameter	Planned	Actual	Parameter	Planned	Actual
Instrument	HRC	HRC	Obspar format version number	6	6
Detector	HRC-S	HRC-S	Obspar file type	PREDICTED	ACTUAL
Grating	LETG	LETG	Obspar update status	NONE	UPDATED
Data mode	OBSERVING	OBSERVING			
Observation mode	POINTING	POINTING			
Pointing RA	329.693066	329.7181009895178			
Pointing Dec	-30.211299	-30.23006330287309			
Pointing Roll	286.011126	286.091080235869			
SIM focus pos (mm)	-1.429586	-1.428180813131781			
SIM defocus (mm)	0.1037507710433287	0.1051558262725154			
SIM translation stage pos (mm)	250.455976	250.466033080201			
SIM translation stage offset (mm)	0	-0.01005468664627074			
Observation start time	155055344.184000	155054908.59161			
Observation start date	2002-11-30T14:54:40	2002-11-30T14:48:28			
Observation end time	155069344.184000	155069513.81722			
Observation end date	2002-11-30T18:48:00	2002-11-30T18:51:53			

## 2.3 Aspect





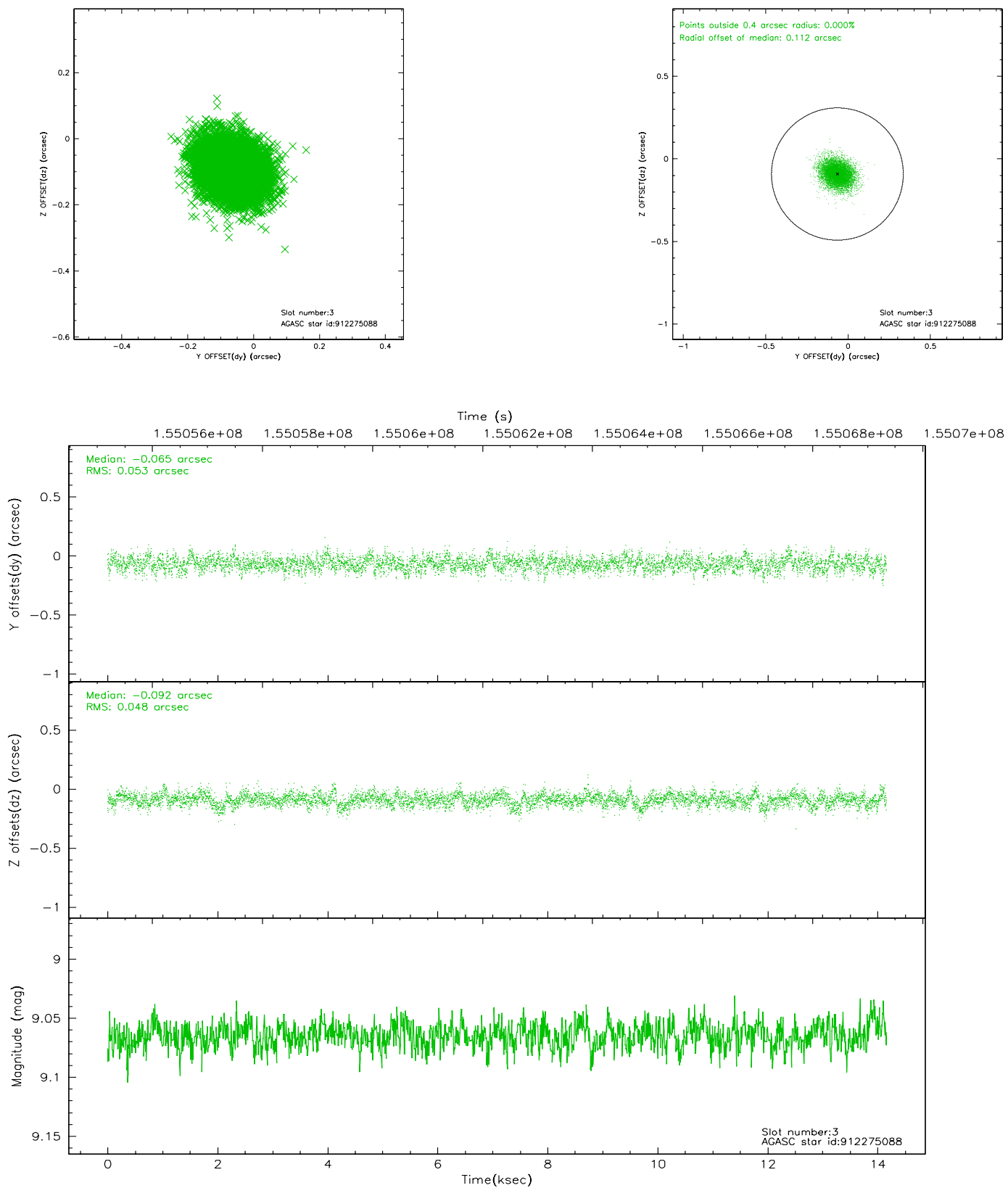
### Slot Statistics

slot	status	id	mag	n_pts	med_dy	med_dz	dr1	dr2	ra	dec	mean_y	mean_z
0	FID	HRC-S-1	7.04	3455	0.133	-0.158	0.019	0.027	0.000000	0.000000	-1158.09	-457.68
1	FID	HRC-S-3	7.05	3455	0.136	-0.038	0.021	0.031	0.000000	0.000000	-1161.15	571.84
2	FID	HRC-S-4	7.02	3455	0.118	-0.102	0.010	0.017	0.000000	0.000000	1239.81	574.65
3	GUIDE	912275088	9.07	6908	-0.065	-0.092	0.076	0.124	329.619228	-29.738698	-1698.27	247.39
4	GUIDE	912276032	9.61	6909	-0.025	0.260	0.096	0.162	329.395967	-29.803466	-1665.52	-487.10
5	GUIDE	981468016	8.99	6906	-0.012	-0.140	0.124	0.190	328.842457	-30.034984	-1331.10	-2375.92
6	GUIDE	981468128	9.37	6906	0.015	-0.007	0.089	0.151	329.756350	-30.158334	-128.25	241.83
7	GUIDE	981469488	9.61	6906	0.086	-0.012	0.100	0.160	329.261199	-30.045155	-942.73	-1129.18

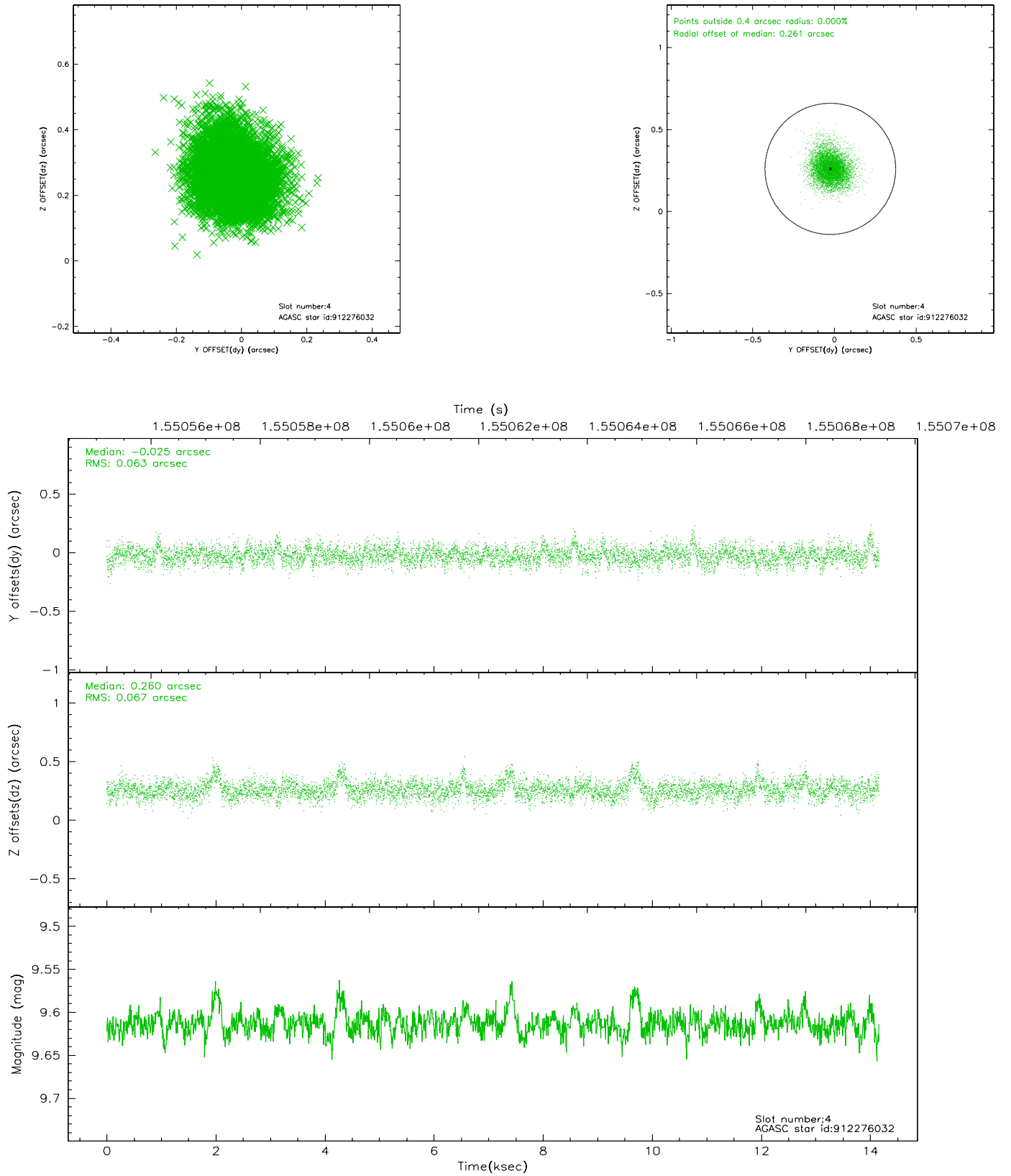


## 2.4 Star Slots

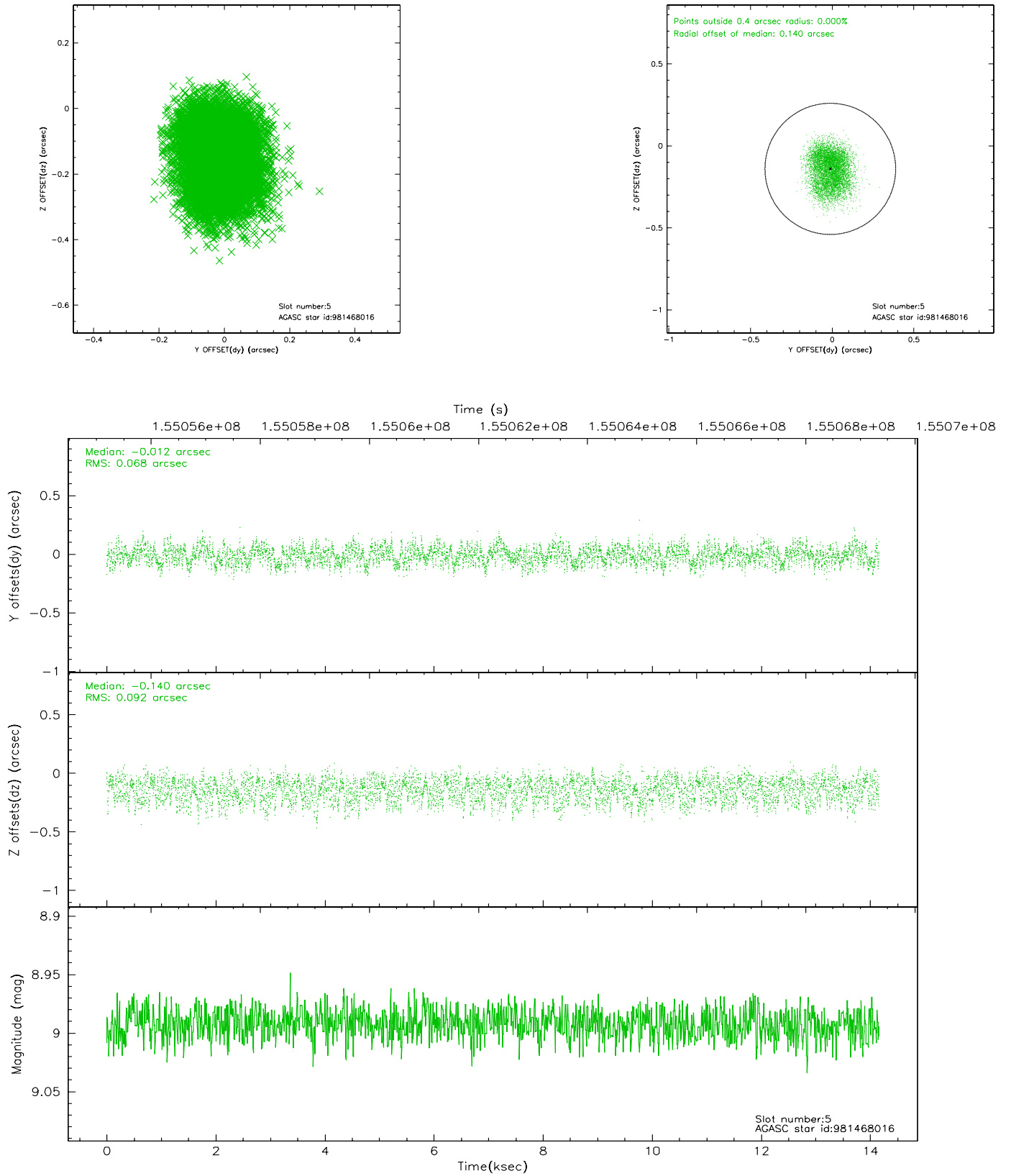
### 2.4.1 Slot 3



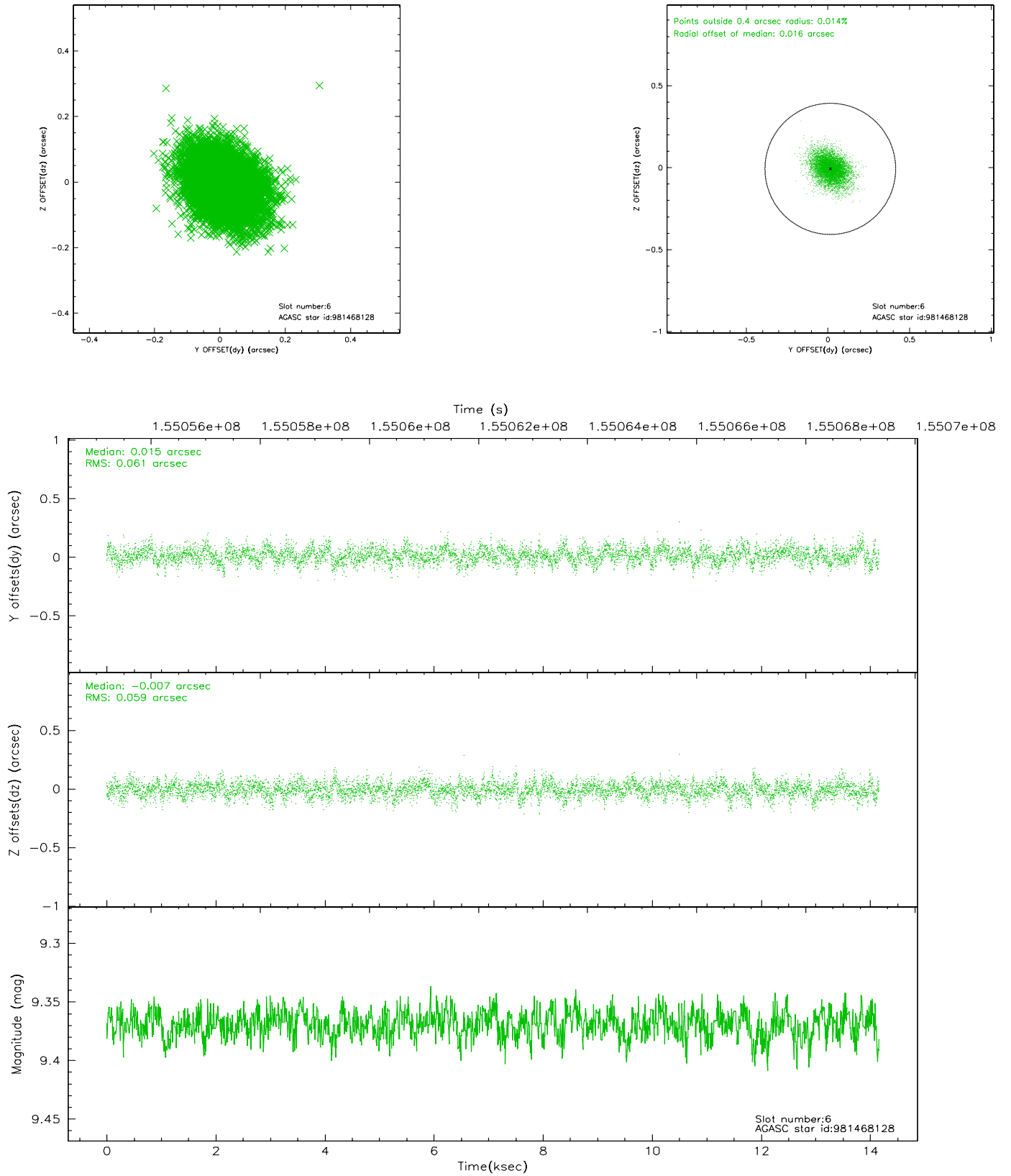
## 2.4.2 Slot 4



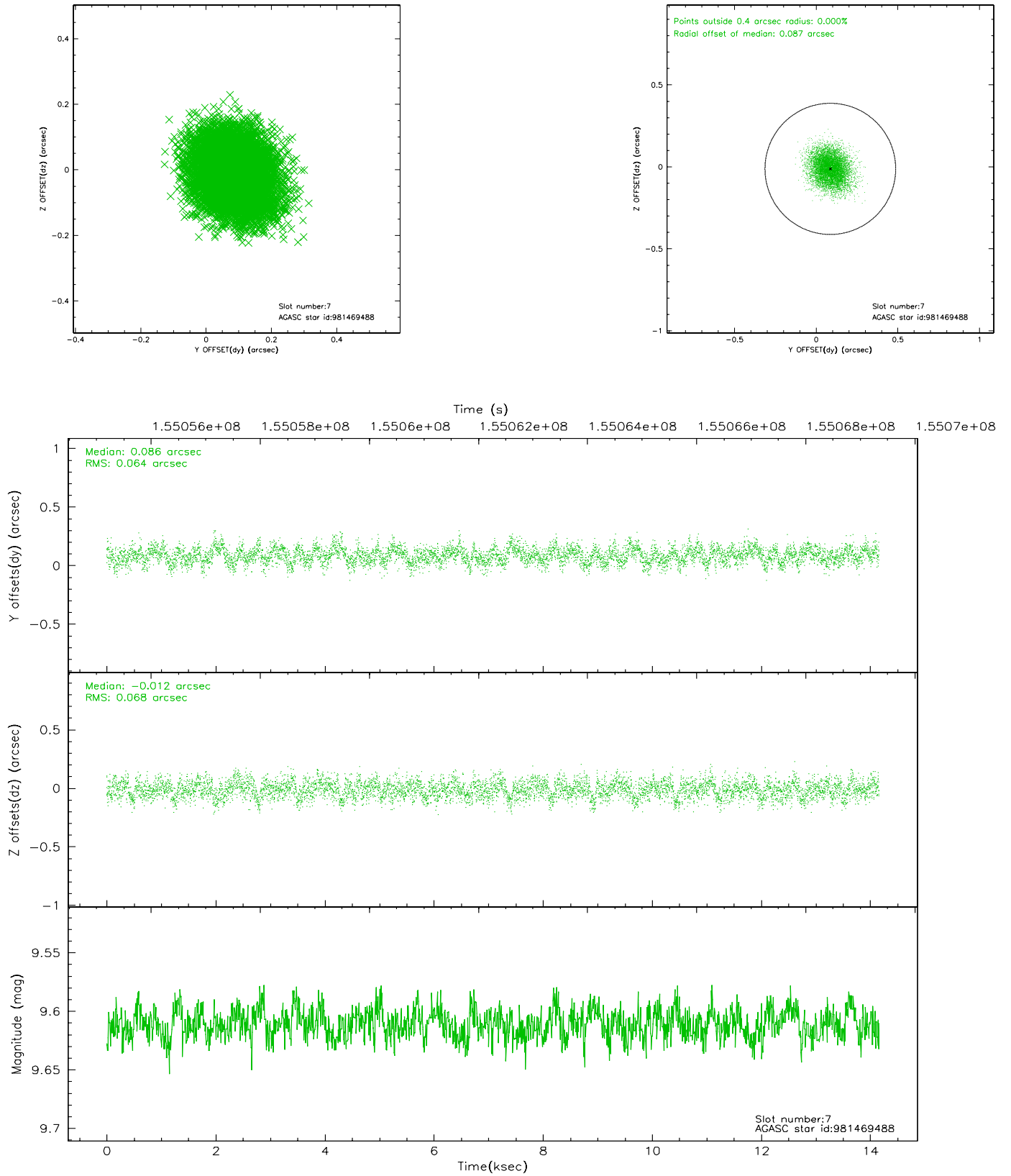
### 2.4.3 Slot 5



## 2.4.4 Slot 6

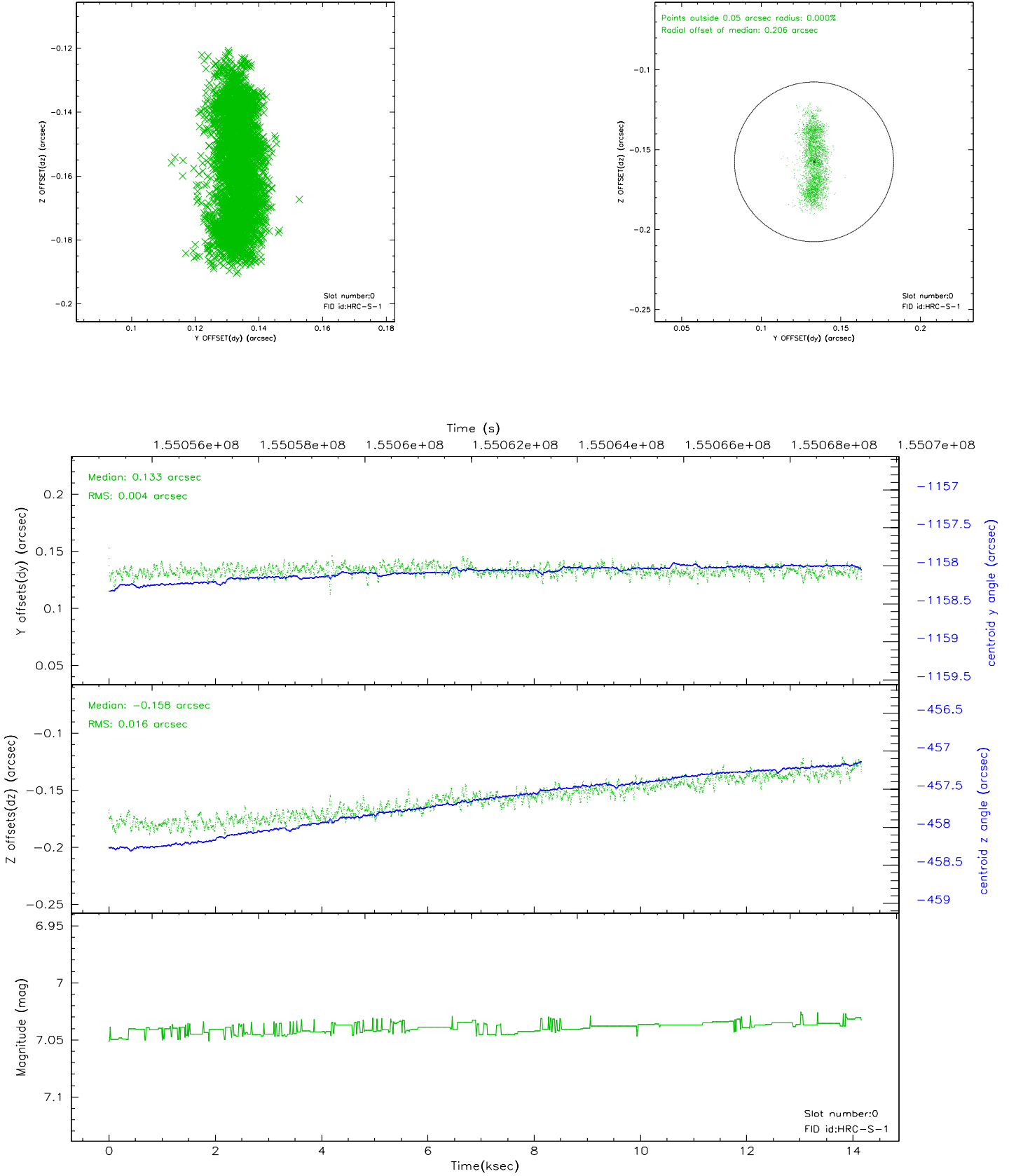


## 2.4.5 Slot 7

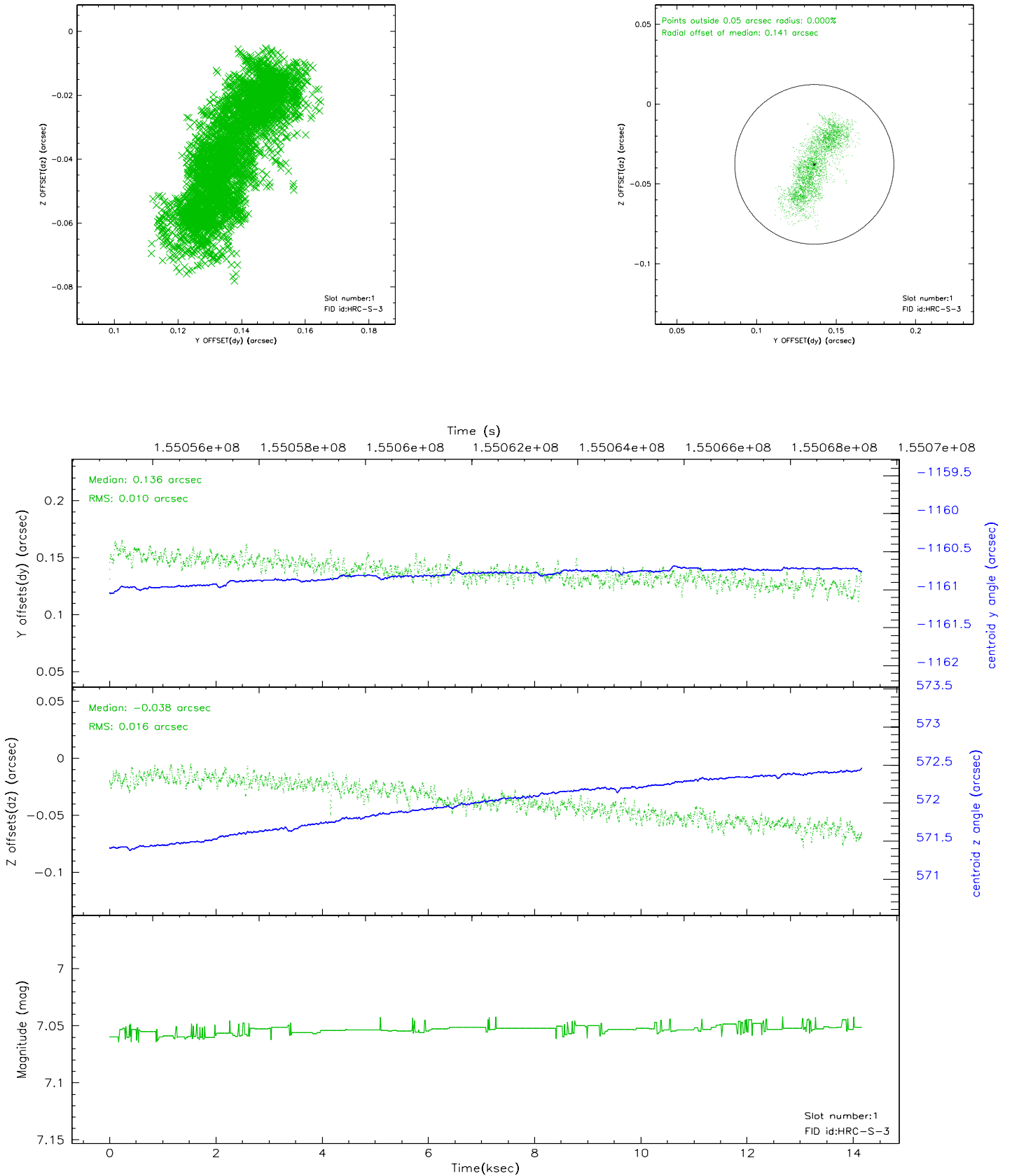


## 2.5 FID Slots

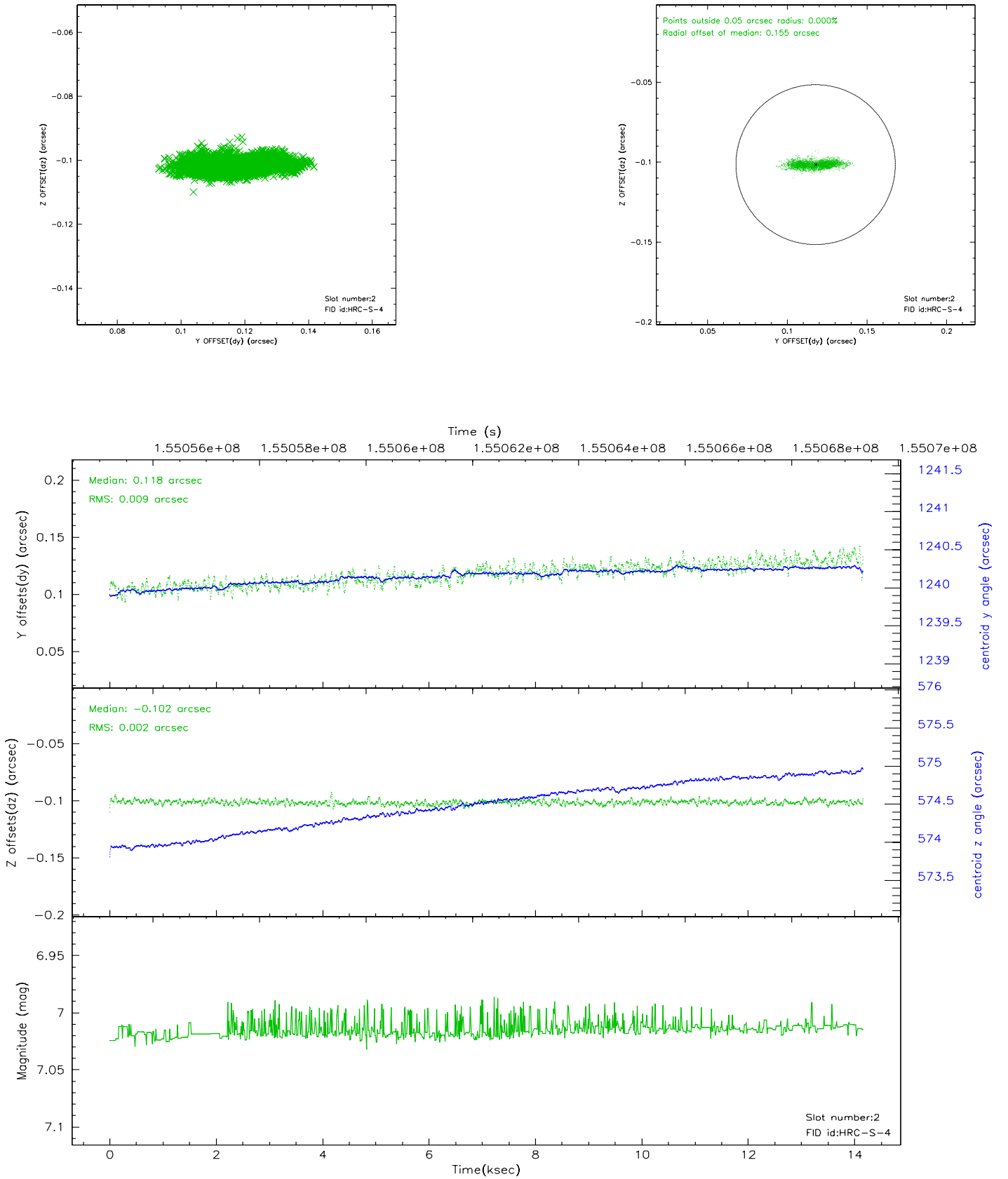
### 2.5.1 Slot 0



## 2.5.2 Slot 1



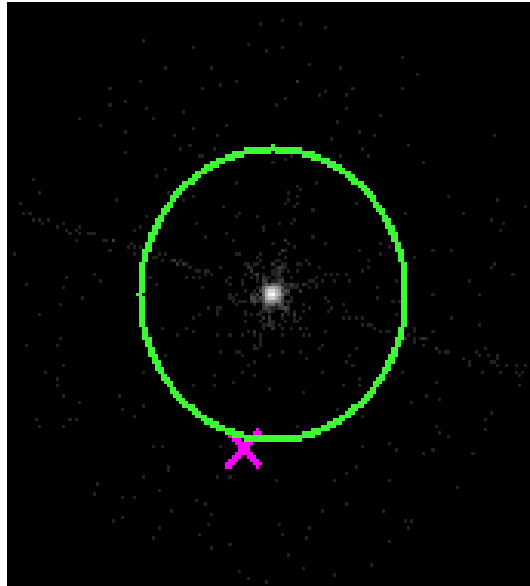
### 2.5.3 Slot 2





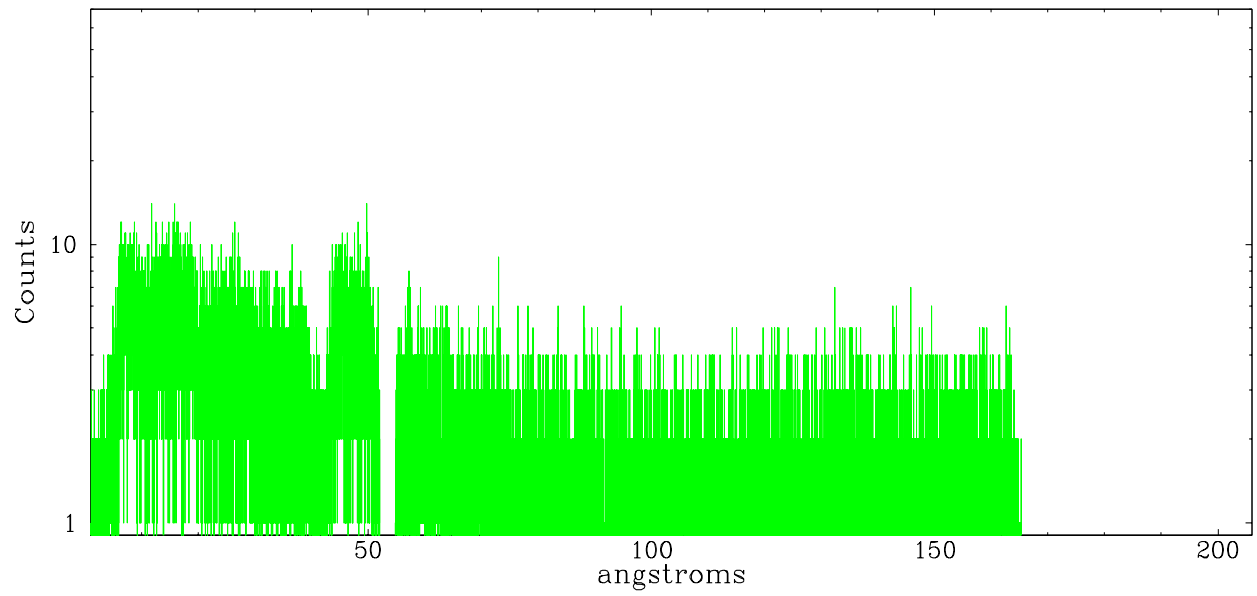
## 3 Gratings

### 3.1 LETG Arm

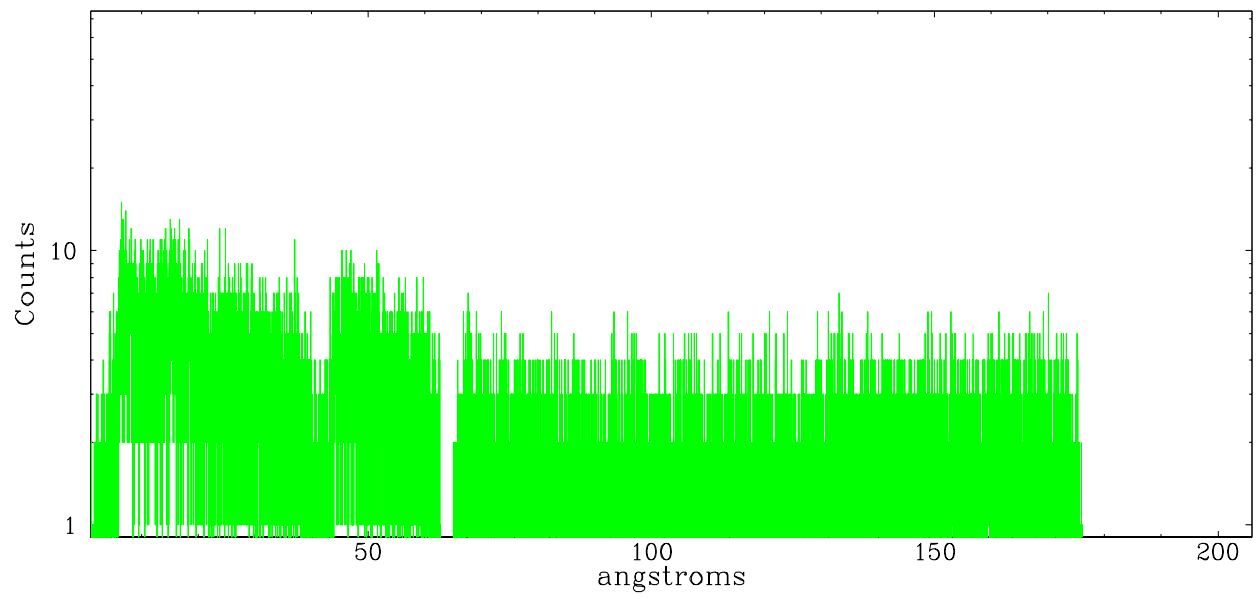


LETG Zero Order

leg order  $-1$



leg order  $+1$



## A Summary

### A.1 Status

V&V Scientist	Beth Sundheim
V&V Date (YYYY-MM-DD)	2006.10.13
V&V Edition	1
V&V Disposition and Status	OK
V&V Charge Time	13.831

### A.2 Comments