

# V&V Reference Report

## L2 ASCDS Version : 7.6.8

Observation 3699 - L2 Version 001  
Chandra X-Ray Center

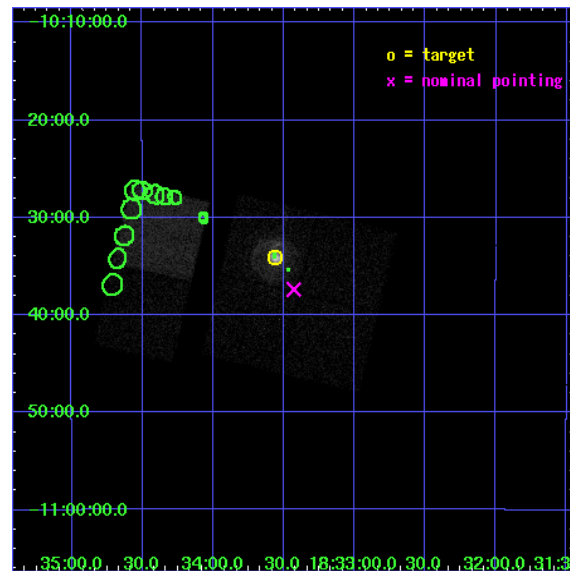
L2 Processing Date : Jun 30 2006

## Contents

<b>1</b>	<b>Front</b>	<b>2</b>
<b>2</b>	<b>OBI</b>	<b>3</b>
2.1	OBI . . . . .	3
2.1.1	Images . . . . .	3
2.1.2	Bias . . . . .	3
2.1.3	Parameters . . . . .	4
2.1.4	Events . . . . .	4
2.2	Compared Parameters . . . . .	5
2.3	Aspect . . . . .	6
2.4	Star Slots . . . . .	9
2.4.1	Slot 3 . . . . .	9
2.4.2	Slot 4 . . . . .	10
2.4.3	Slot 5 . . . . .	11
2.4.4	Slot 6 . . . . .	12
2.4.5	Slot 7 . . . . .	13
2.5	FID Slots . . . . .	14
2.5.1	Slot 0 . . . . .	14
2.5.2	Slot 1 . . . . .	15
2.5.3	Slot 2 . . . . .	16
<b>3</b>	<b>Point Sources</b>	<b>17</b>
<b>A</b>	<b>Summary</b>	<b>18</b>
A.1	Status . . . . .	18
A.2	Comments . . . . .	18

# 1 Front

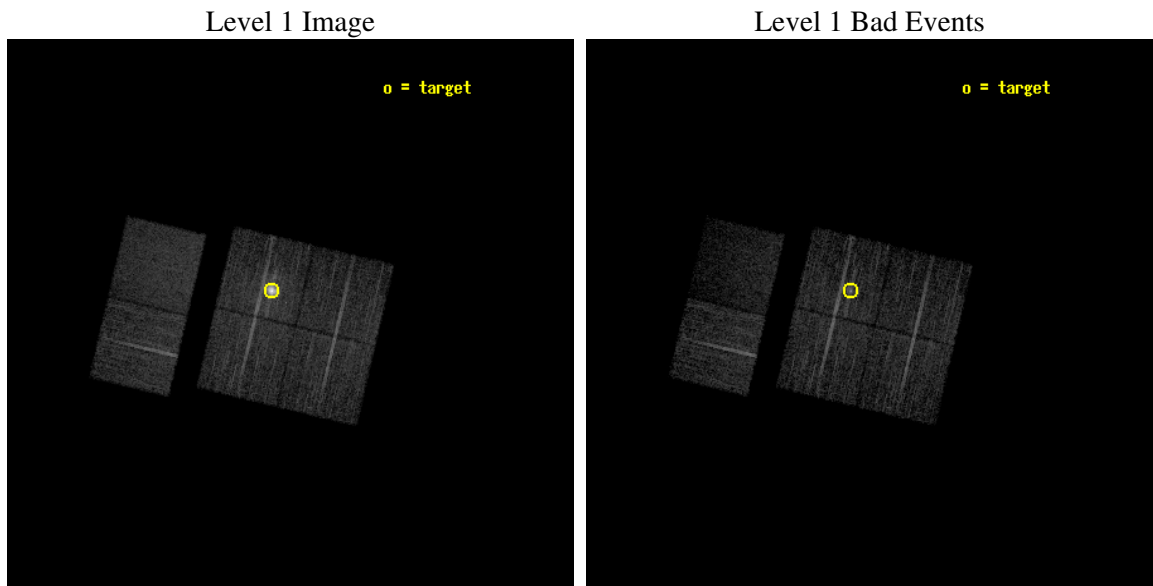
seq_num	590311
obs_id	3699
title	AO4B OBSERVATIONS OF THE STANDARD CANDLES CAS A AND G21.5-09
observer	Dr. CXC Calibration
object	G21.5-0.9[Chip I3, T=120, Offsets=-2.5,2.5,0]
dtcycle	0
cycle	P
ra_targ	278.389583
dec_targ	-10.568528
ra_nom	278.35716425022
dec_nom	-10.623107012603
roll_nom	283.34160447887
revision	3
ontime	9827.1999633908
livetime	9702.762040225
ontime0	9817.4771423042
ontime1	9827.1999633908
ontime2	9827.1999633908
ontime3	9827.1999633908
ontime6	9827.1999633908
ontime7	9827.1999633908
l2events	69596



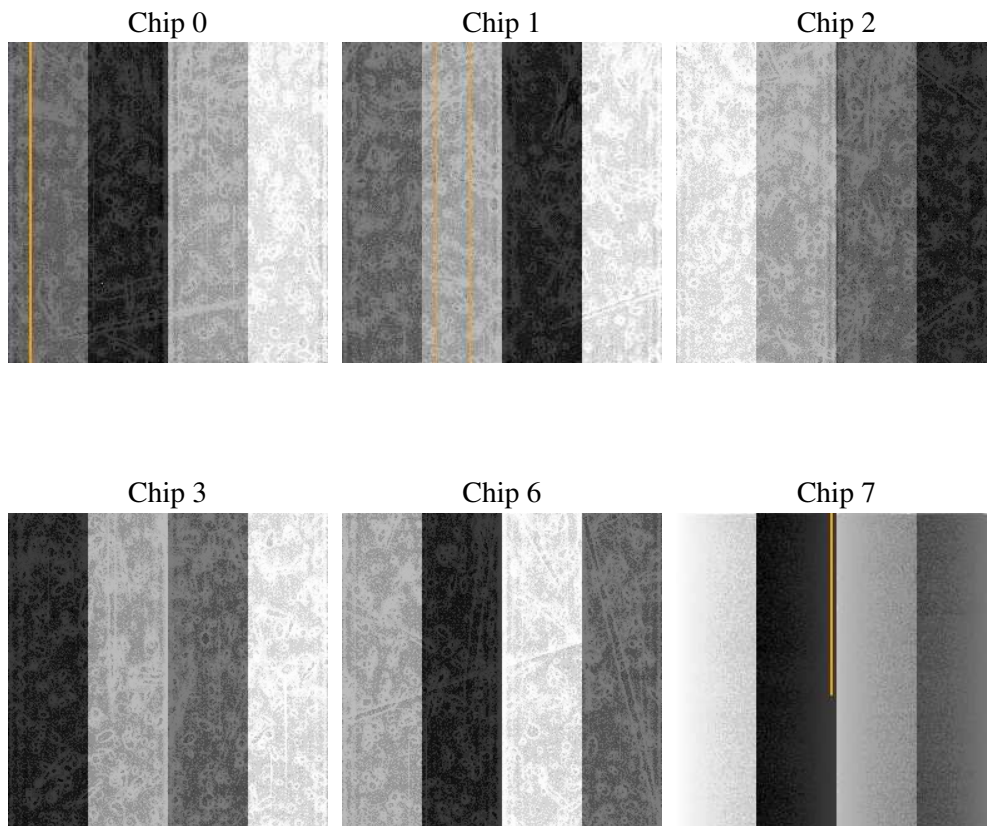
## 2 OBI

### 2.1 OBI

#### 2.1.1 Images



#### 2.1.2 Bias



### 2.1.3 Parameters

obi_num	1
ascdsver	7.6.8
caldsver	3.2.2
date	2006-06-30T09:58:09
revision	3

sched_exp_time	9700.000000
ontime	10241.565444022
ontime0	10231.842622936
ontime1	10241.565444022
ontime2	10241.565444022
ontime3	10241.565444022
ontime6	10241.565444022
ontime7	10241.565444022
l1events	300819

### 2.1.4 Events

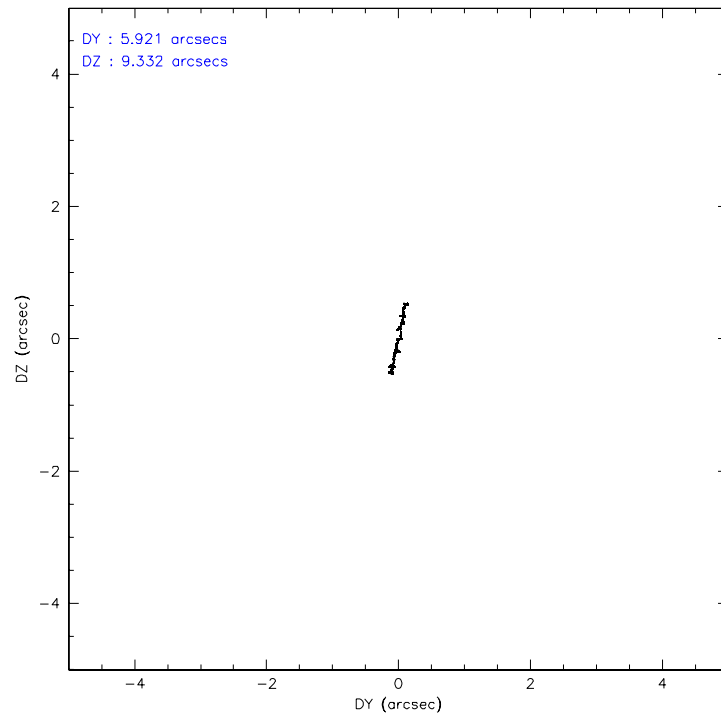
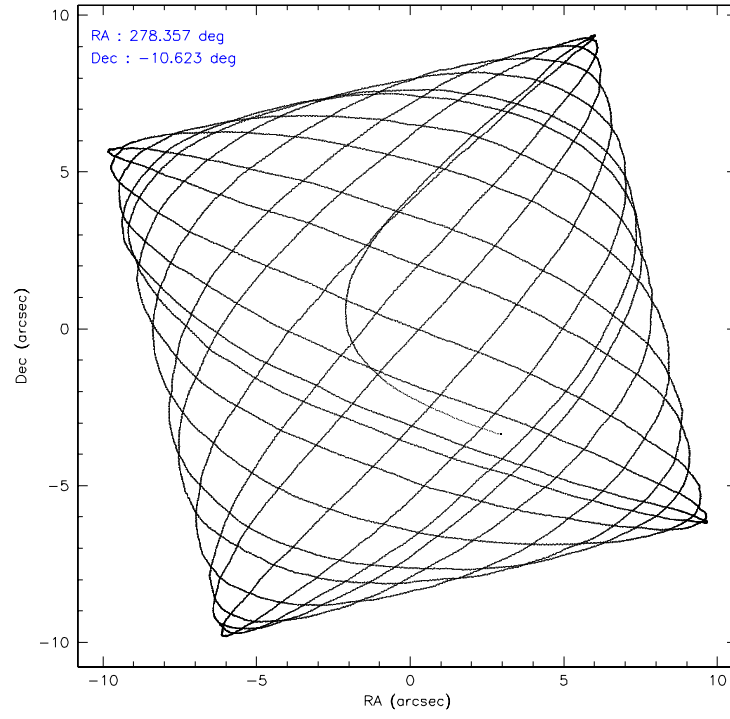
	ccd 0	ccd 1	ccd 2	ccd 3	ccd 6	ccd 7
level 1 events	43834	41766	47187	77388	46594	44050
rejected events	38597	36408	41811	42682	41447	23855
rejected %	88%	87%	88%	55%	88%	54%

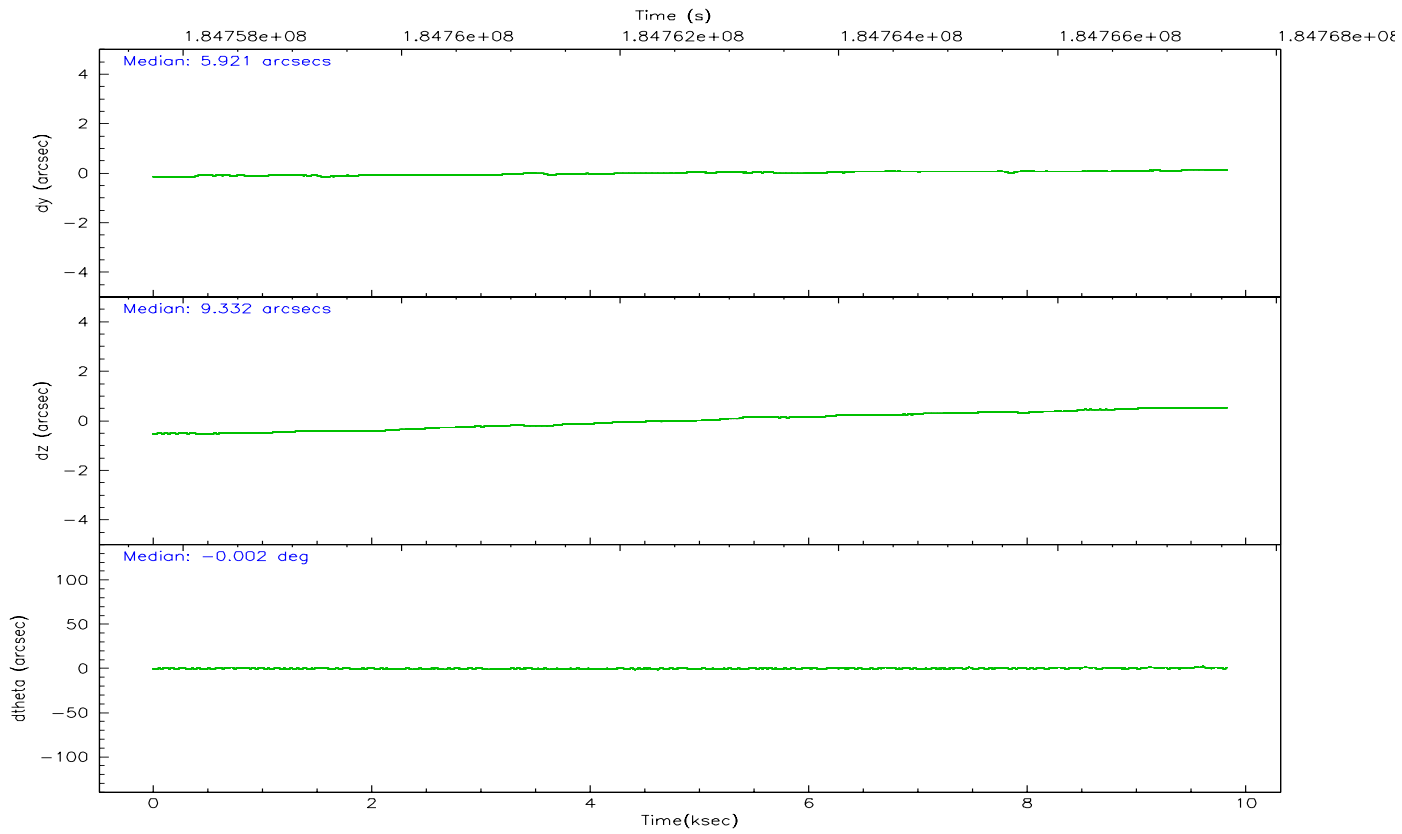
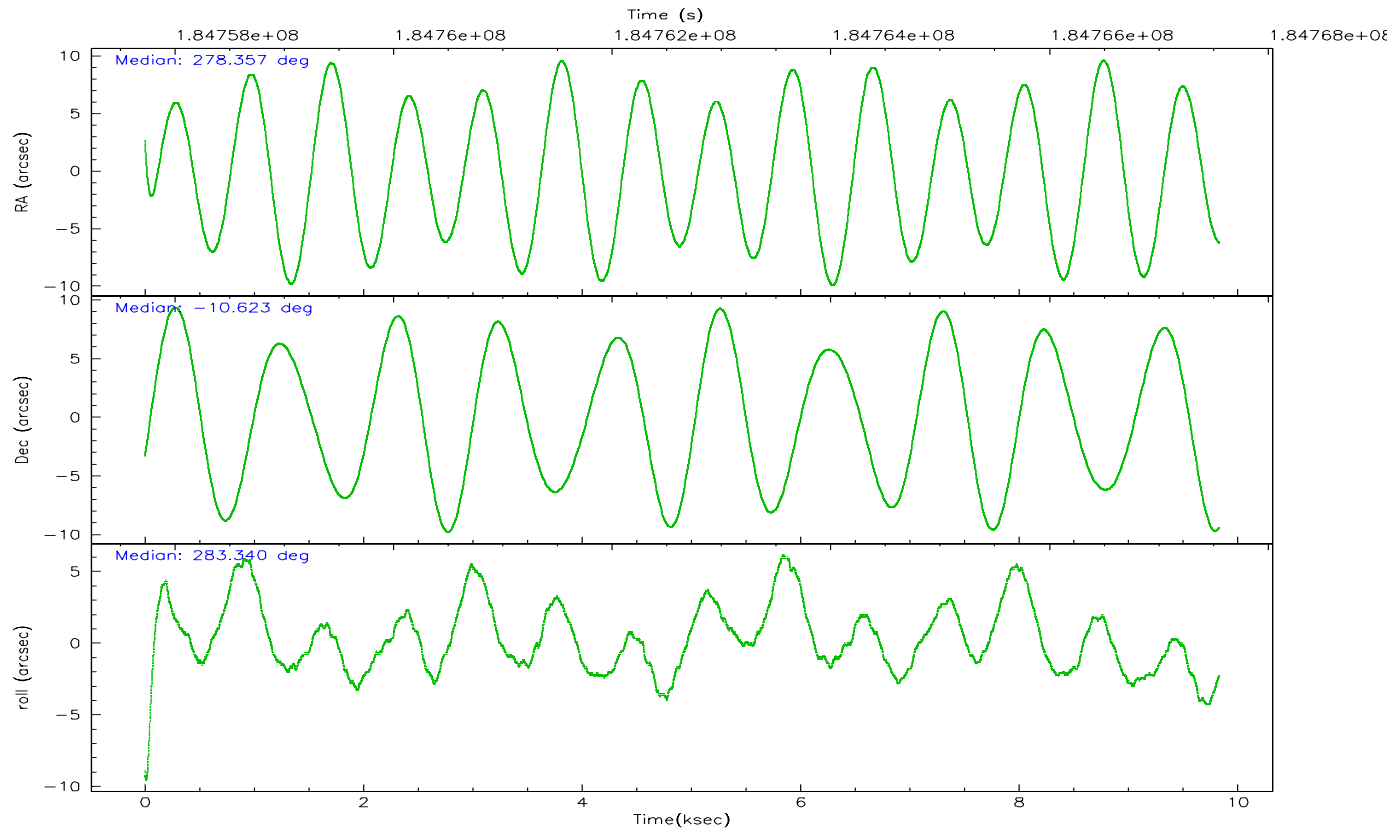
	ccd 0	ccd 1	ccd 2	ccd 3	ccd 6	ccd 7
grade 0 events	2362	2286	2488	24725	2127	1403
	5%	5%	5%	31%	4%	3%
grade 1 events	23	23	28	244	25	23
	0%	0%	0%	0%	0%	0%
grade 2 events	1141	1137	1188	4936	1148	5362
	2%	2%	2%	6%	2%	12%
grade 3 events	554	598	536	1786	517	1327
	1%	1%	1%	2%	1%	3%
grade 4 events	509	578	573	1747	508	1291
	1%	1%	1%	2%	1%	2%
grade 5 events	1337	1369	1284	1768	1590	3486
	3%	3%	2%	2%	3%	7%
grade 6 events	929	1003	807	2262	1074	11612
	2%	2%	1%	2%	2%	26%
grade 7 events	36979	34772	40283	39920	39605	19546
	84%	83%	85%	51%	85%	44%

## 2.2 Compared Parameters

Parameter	Planned	Actual	Parameter	Planned	Actual
Instrument	ACIS	ACIS	Obspar format version number	6	6
Detector	ACIS-012367	ACIS-012367	Obspar file type	PREDICTED	ACTUAL
Grating	NONE	NONE	Obspar update status	NONE	UPDATED
Data mode	VFAINT	VFAINT	On-chip summing requested	N	N
Observation mode	POINTING	POINTING	Subarray requested	NONE	NONE
Pointing RA	278.337947	278.357164250221	Alternating exposures requested	N	N
Pointing Dec	-10.603310	-10.62310701260335	Primary exposure time	0.000000	3.2
Pointing Roll	283.129400	283.3416044788679			
Window start time	182563264.184000	182563264.184000			
Window stop time	185241664.184000	185241664.184000			
SIM focus pos (mm)	-0.782348	-0.7809083437167272			
SIM defocus (mm)	0	0.001439871863259334			
SIM translation stage pos (mm)	-233.592463	-233.5874344608287			
SIM translation stage offset (mm)	0	-0.005018542100998502			
Observation start time	184757856.184000	184756610.06319			
Observation start date	2003-11-09T09:36:32	2003-11-09T09:16:50			
Observation end time	184767556.184000	184767706.71367			
Observation end date	2003-11-09T12:18:12	2003-11-09T12:21:46			
Read mode	TIMED	TIMED			

## 2.3 Aspect





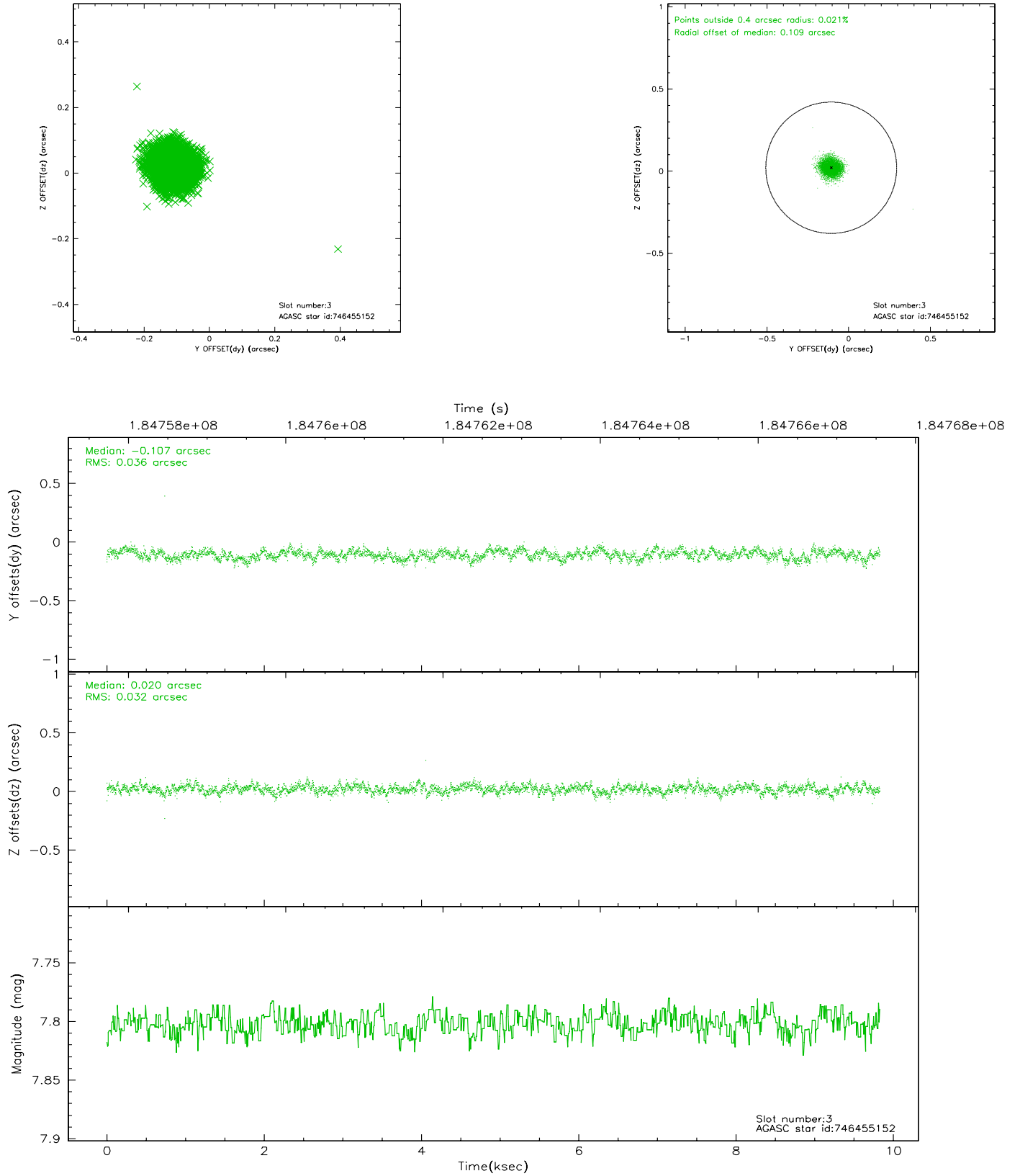
### Slot Statistics

slot	status	id	mag	n_pts	med_dy	med_dz	dr1	dr2	ra	dec	mean_y	mean_z
0	FID	ACIS-I-1	7.23	2398	-0.022	0.070	0.011	0.017	0.000000	0.000000	933.77	-832.72
1	FID	ACIS-I-5	7.23	2398	-0.108	0.023	0.008	0.013	0.000000	0.000000	-1814.13	1064.45
2	FID	ACIS-I-6	7.26	2398	0.038	-0.021	0.014	0.021	0.000000	0.000000	398.78	1709.53
3	GUIDE	746455152	7.80	4797	-0.107	0.020	0.050	0.080	278.447893	-9.976732	-2108.10	892.16
4	GUIDE	746460272	8.94	4794	-0.058	0.016	0.083	0.131	278.847488	-10.152127	-1170.68	2127.43
5	GUIDE	746462392	8.54	4794	0.109	0.041	0.077	0.118	279.038421	-10.890715	1573.69	2176.94
6	GUIDE	746995400	9.49	4791	0.120	-0.097	0.094	0.150	278.078957	-11.289885	2200.40	-1451.45
7	GUIDE	746460328	9.78	4794	-0.060	0.018	0.134	0.222	278.603974	-9.898096	-2256.96	1495.17

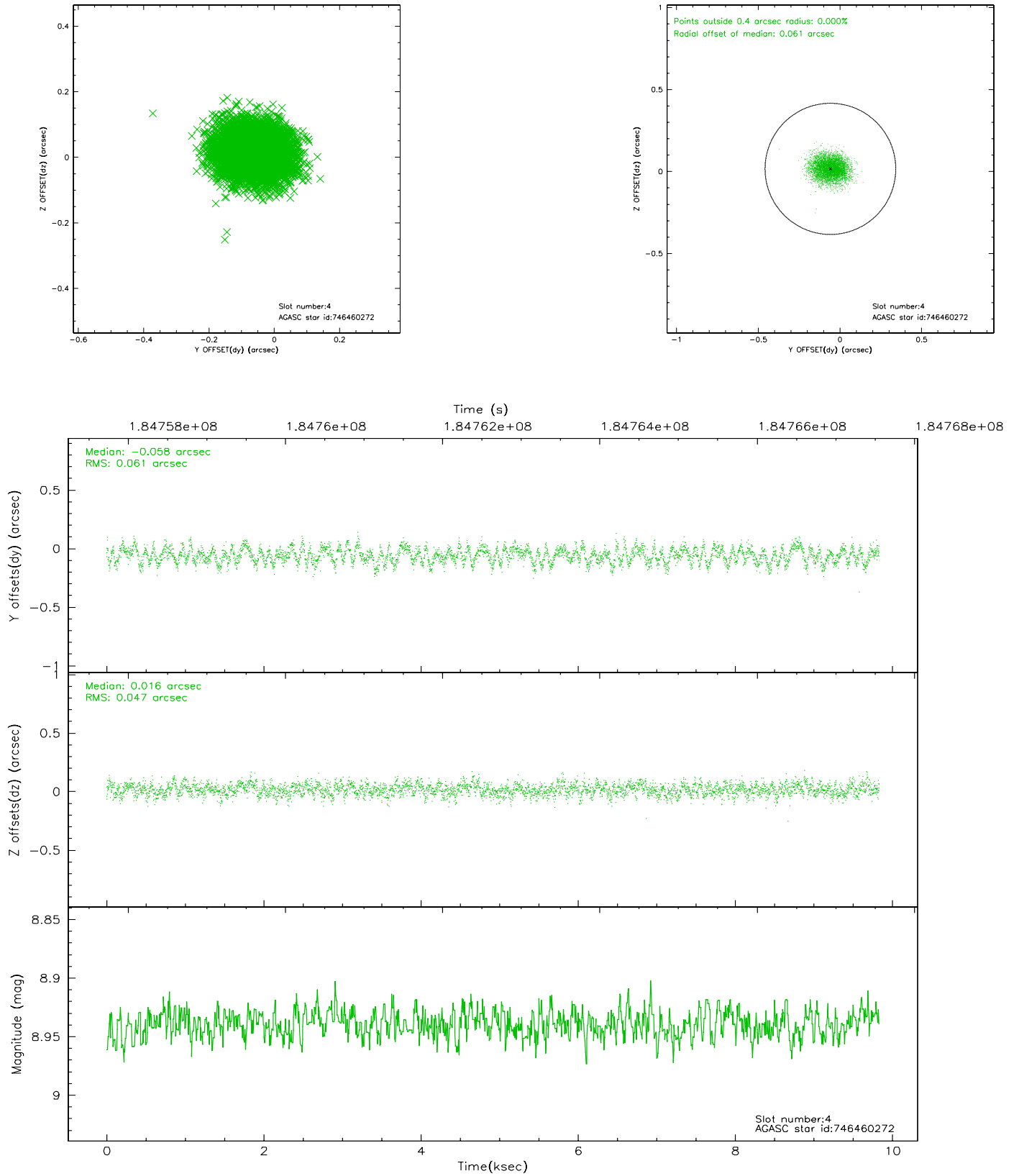


## 2.4 Star Slots

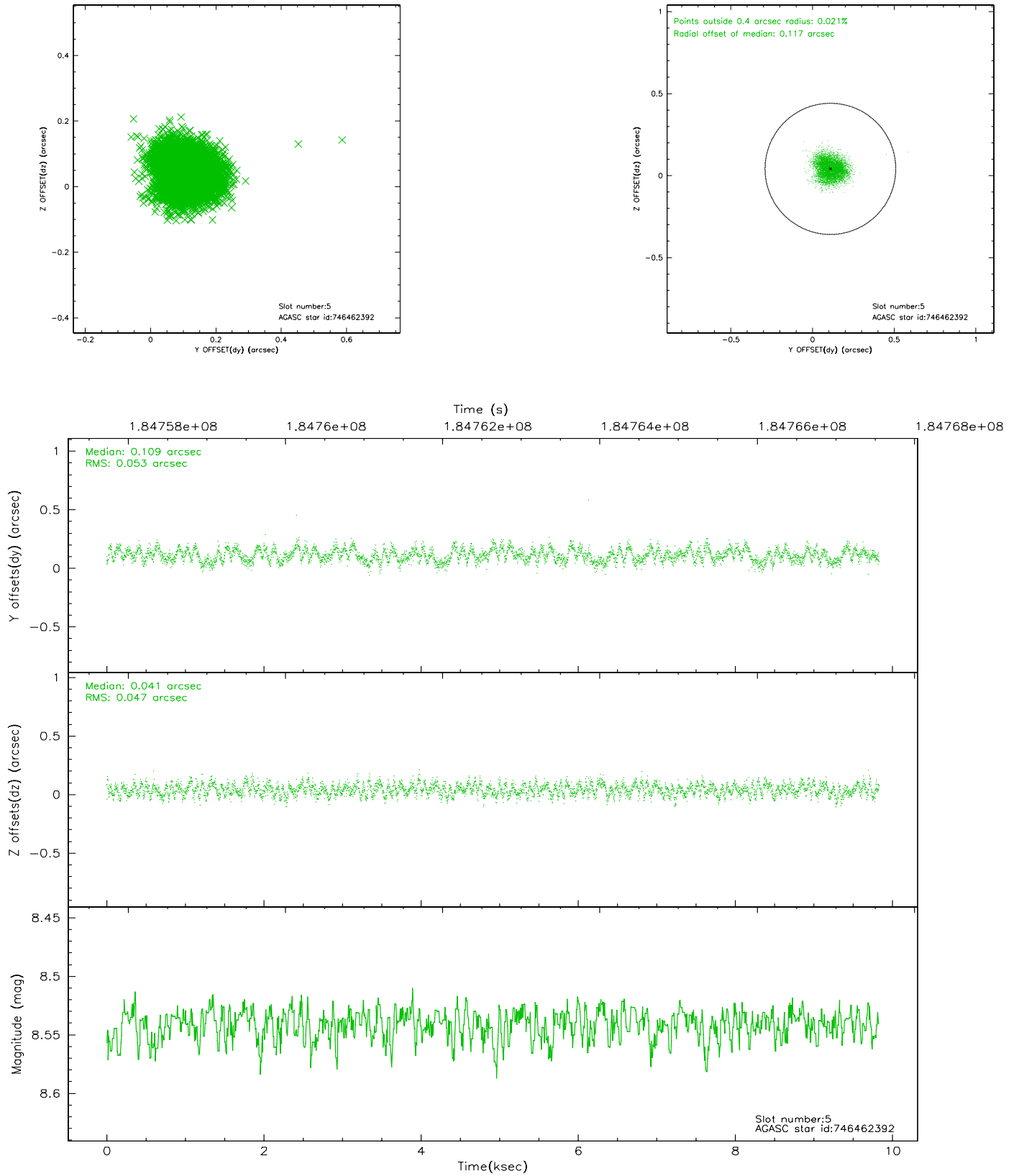
### 2.4.1 Slot 3



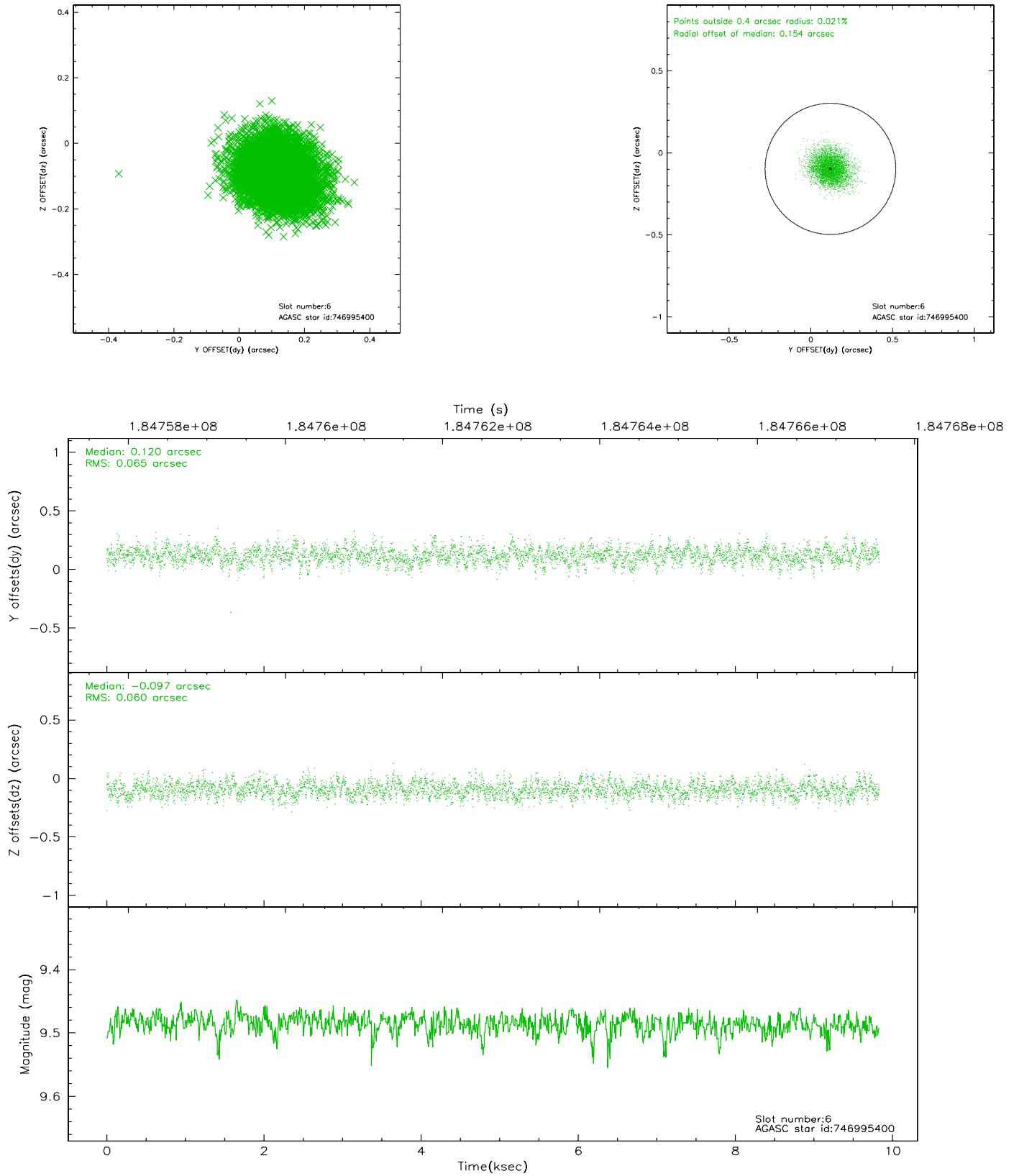
## 2.4.2 Slot 4



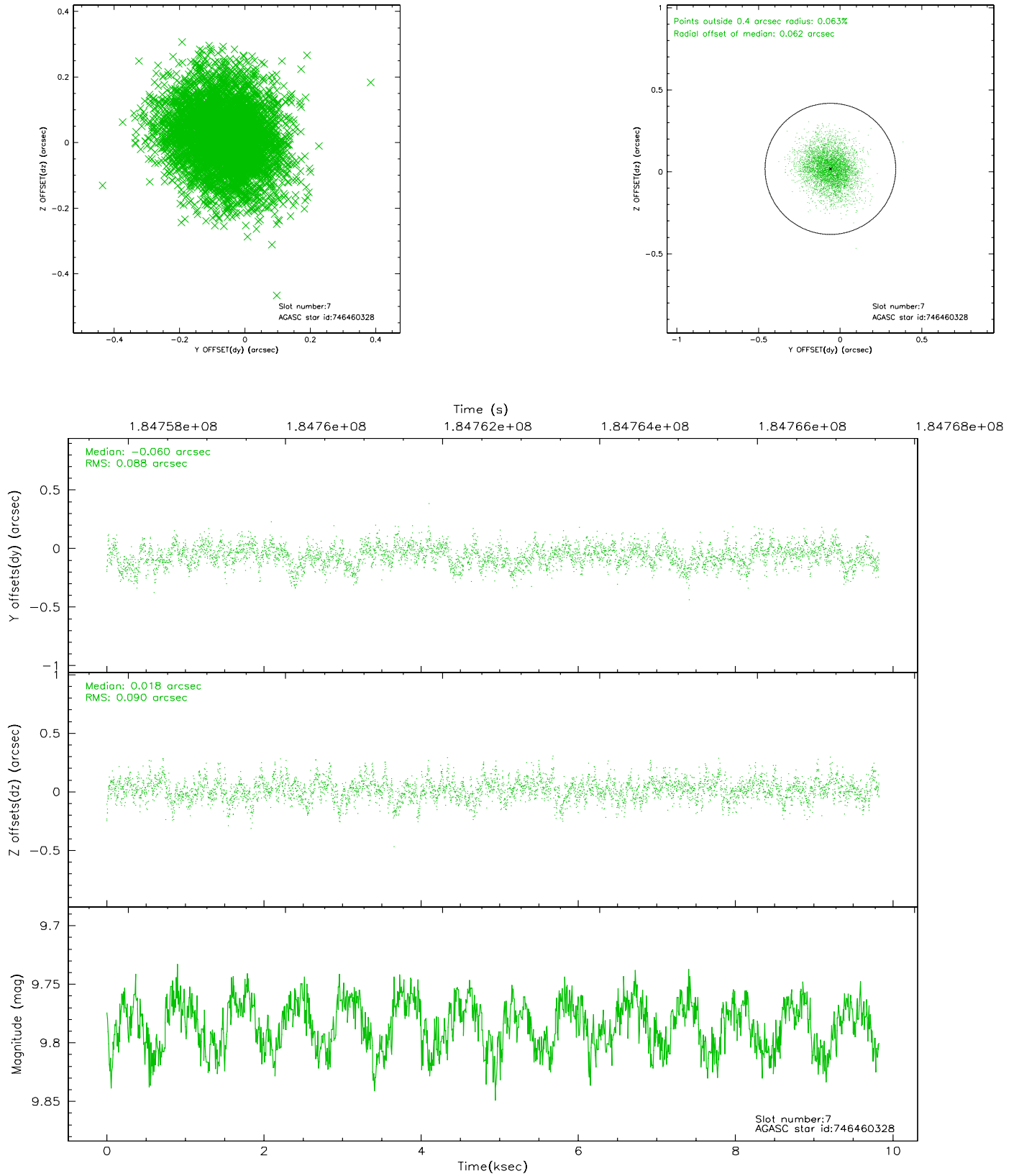
### 2.4.3 Slot 5



## 2.4.4 Slot 6

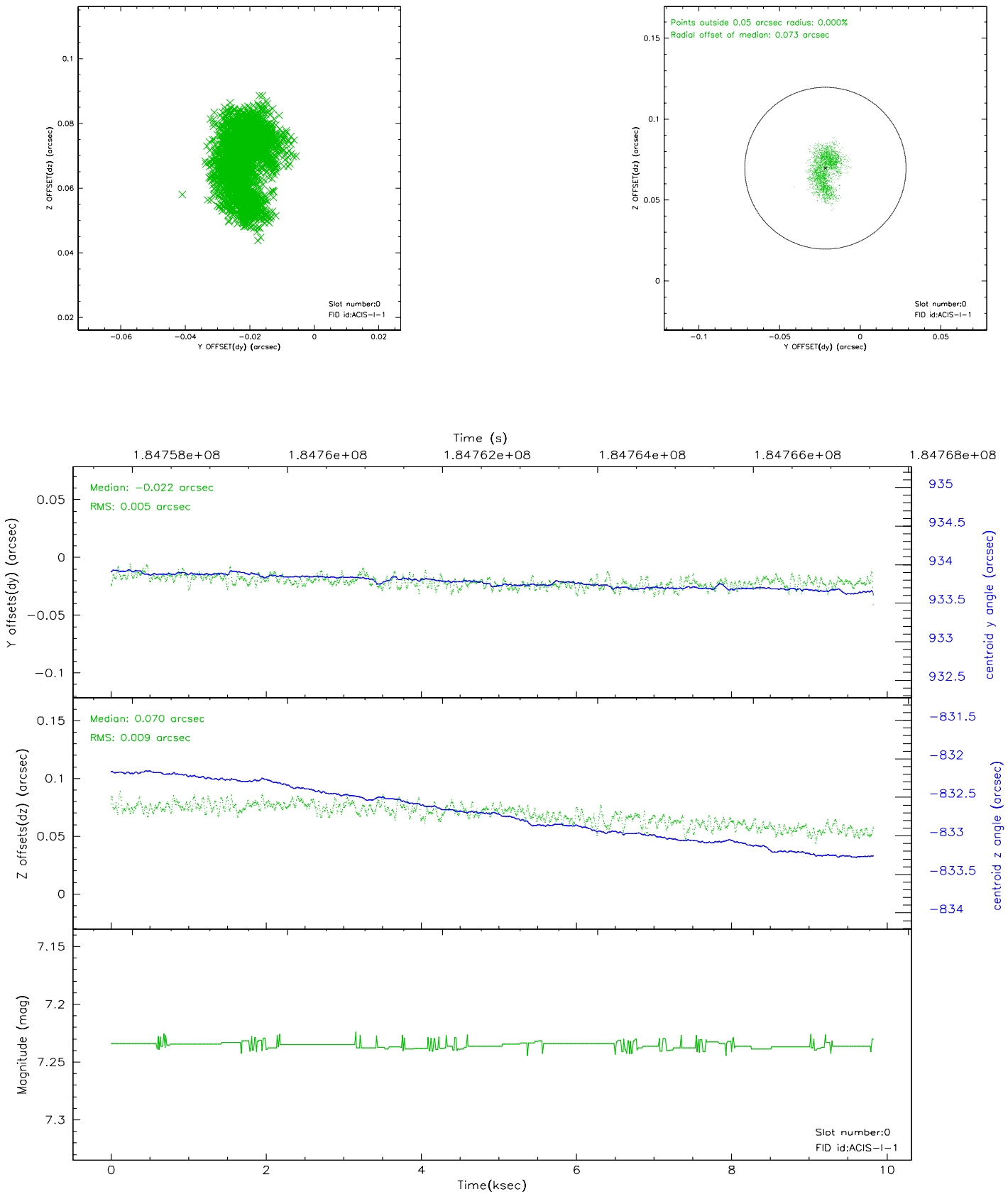


## 2.4.5 Slot 7

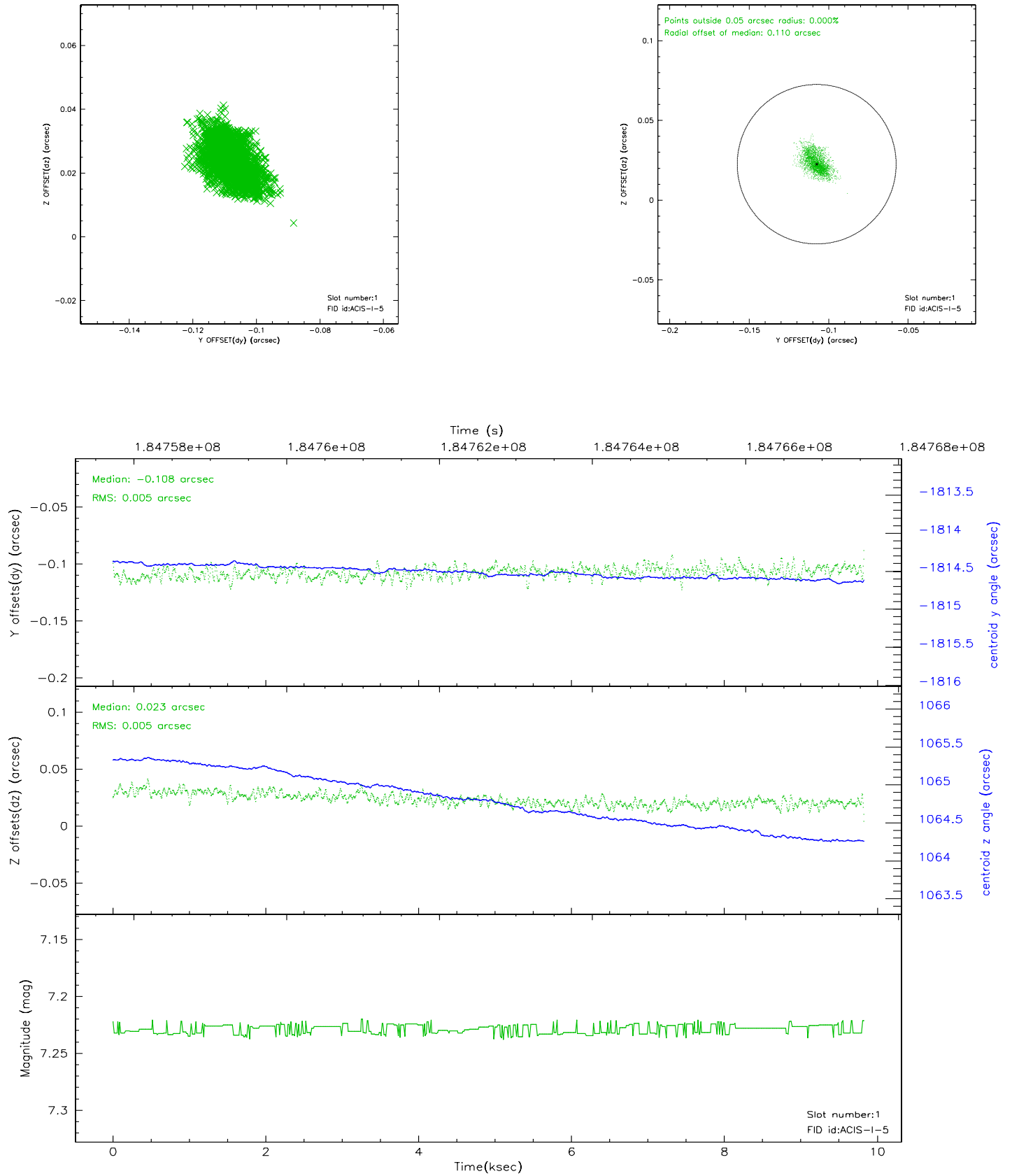


## 2.5 FID Slots

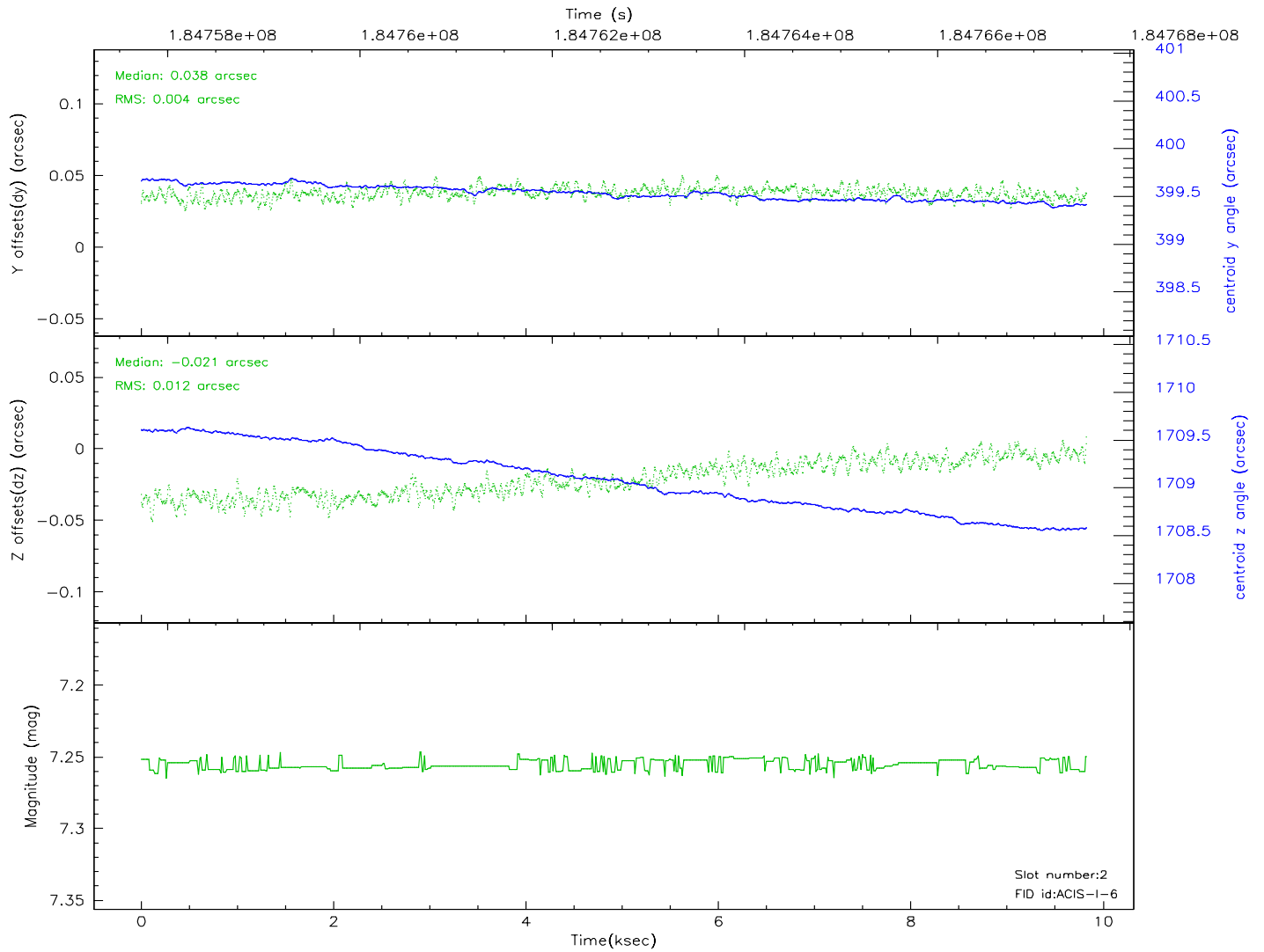
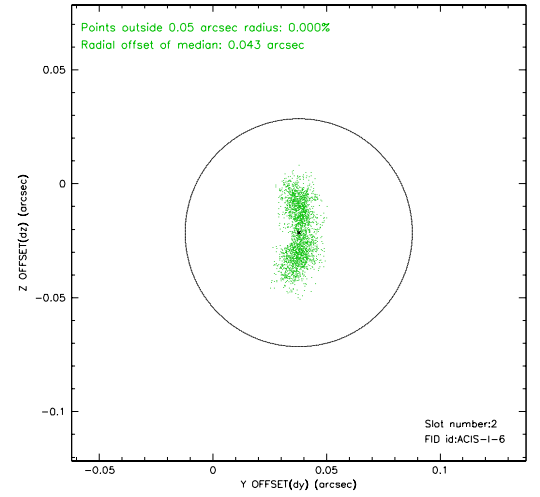
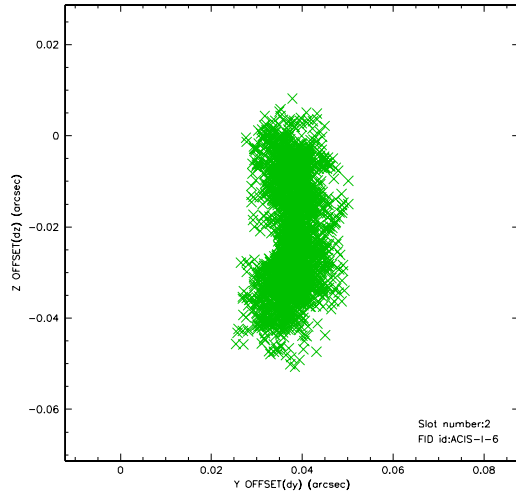
### 2.5.1 Slot 0



## 2.5.2 Slot 1

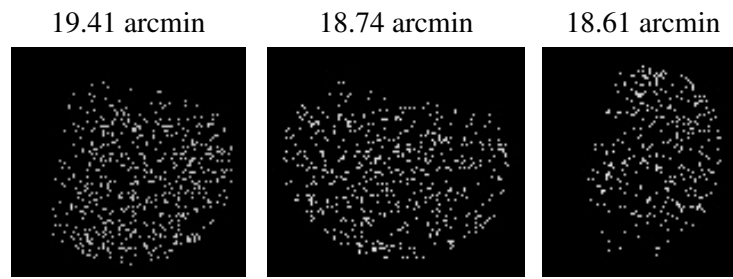


## 2.5.3 Slot 2





### 3 Point Sources



## A Summary

### A.1 Status

V&V Scientist	Beth Sundheim
V&V Date (YYYY-MM-DD)	2006.06.30
V&V Edition	1
V&V Disposition and Status	OK
V&V Charge Time	9.827

### A.2 Comments

Window constraint satisfied.