

V&V Reference Report

L2 ASCDS Version : 7.6.9

Observation 3669 - L2 Version 001
Chandra X-Ray Center

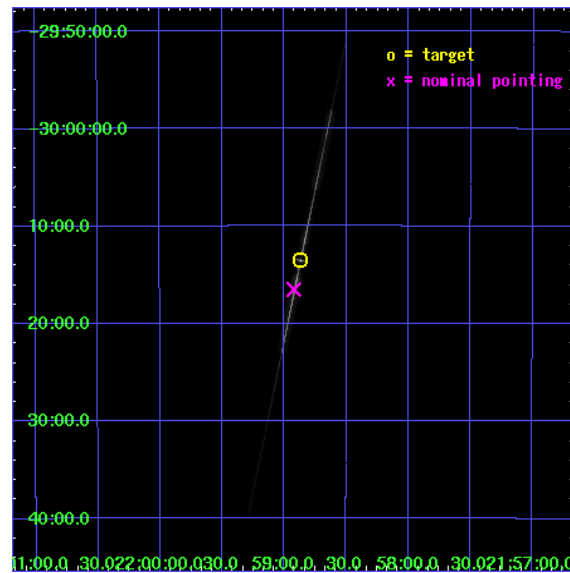
L2 Processing Date : Sep 19 2006

Contents

1	Front	2
2	OBI	3
2.1	OBI	3
2.1.1	Images	3
2.1.2	Bias	3
2.1.3	Parameters	4
2.1.4	Events	4
2.2	Compared Parameters	5
2.3	Aspect	6
2.4	Star Slots	9
2.4.1	Slot 3	9
2.4.2	Slot 4	10
2.4.3	Slot 5	11
2.4.4	Slot 6	12
2.4.5	Slot 7	13
2.5	FID Slots	14
2.5.1	Slot 0	14
2.5.2	Slot 1	15
2.5.3	Slot 2	16
3	Gratings	17
3.1	LETG Arm	17
A	Summary	19
A.1	Status	19
A.2	Comments	19

1 Front

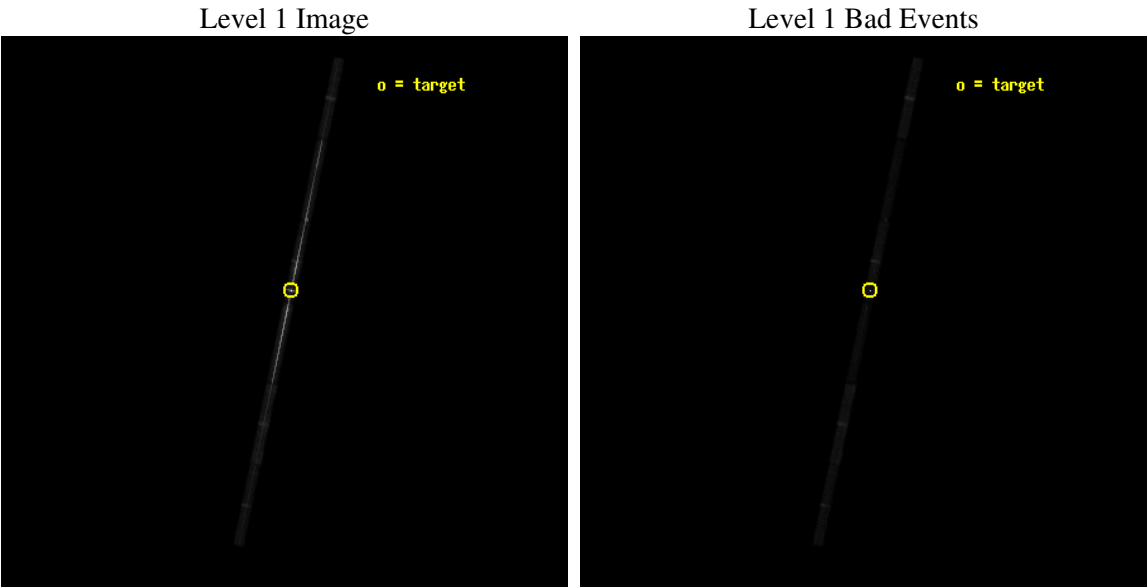
seq_num	790081
obs_id	3669
title	INVESTIGATING THE CONTAMINATION BUILD-UP ON ACIS
observer	Dr. CXC Calibration
object	PKS2155-304
dtcycle	0
cycle	P
ra_targ	329.716667
dec_targ	-30.225556
ra_nom	329.73048490936
dec_nom	-30.275110110423
roll_nom	101.81043775251
revision	2
ontime	44916.158195049
livetime	42428.628328476
ontime4	44916.158195049
ontime5	44915.417184949
ontime6	44916.158195049
ontime7	44916.158195049
ontime8	44916.158195049
ontime9	44916.89923507
l2events	688787



2 OBI

2.1 OBI

2.1.1 Images



2.1.2 Bias

Chip 4

Chip 5

Chip 6



Chip 7

Chip 8

Chip 9



2.1.3 Parameters

obi_num	0
ascdsver	7.6.9
caldbver	3.2.3
date	2006-09-19T13:58:19
revision	2

sched_exp_time	45147.563000
ontime	44916.870777071
ontime4	44916.870777071
ontime5	44916.129766971
ontime6	44916.870777071
ontime7	44916.870777071
ontime8	44916.870777071
ontime9	44917.611817092
l1events	996467

2.1.4 Events

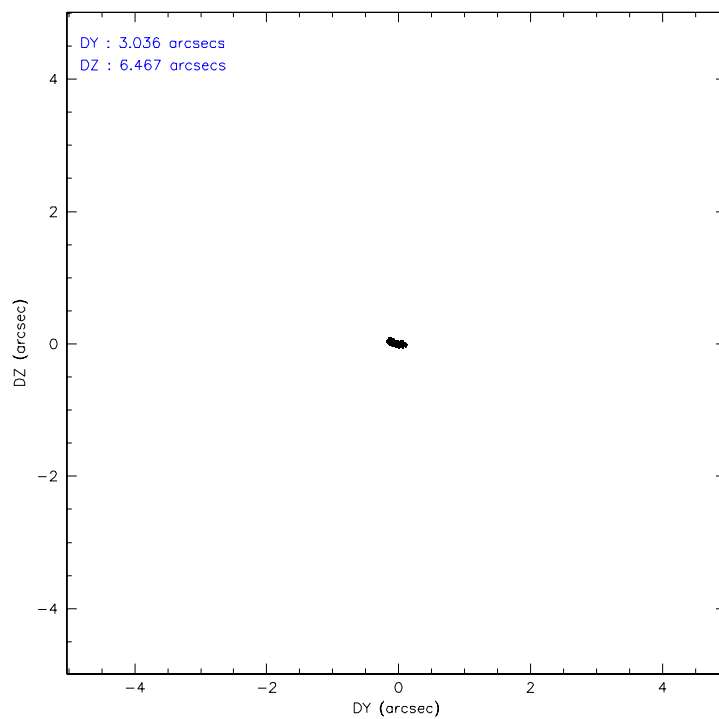
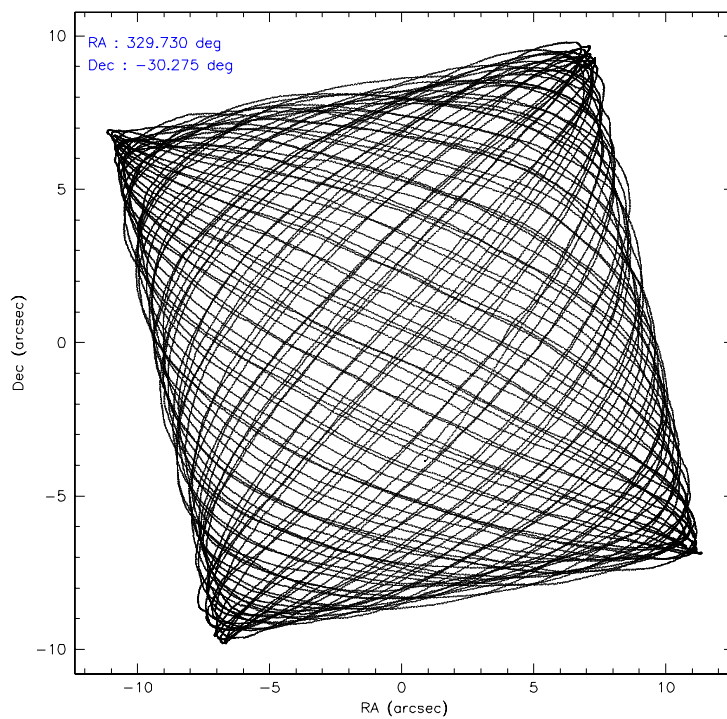
	ccd 4	ccd 5	ccd 6	ccd 7	ccd 8	ccd 9
level 1 events	61111	132337	382040	294427	77881	48671
rejected events	48932	29079	74940	29730	53674	38228
rejected %	80%	21%	19%	10%	68%	78%

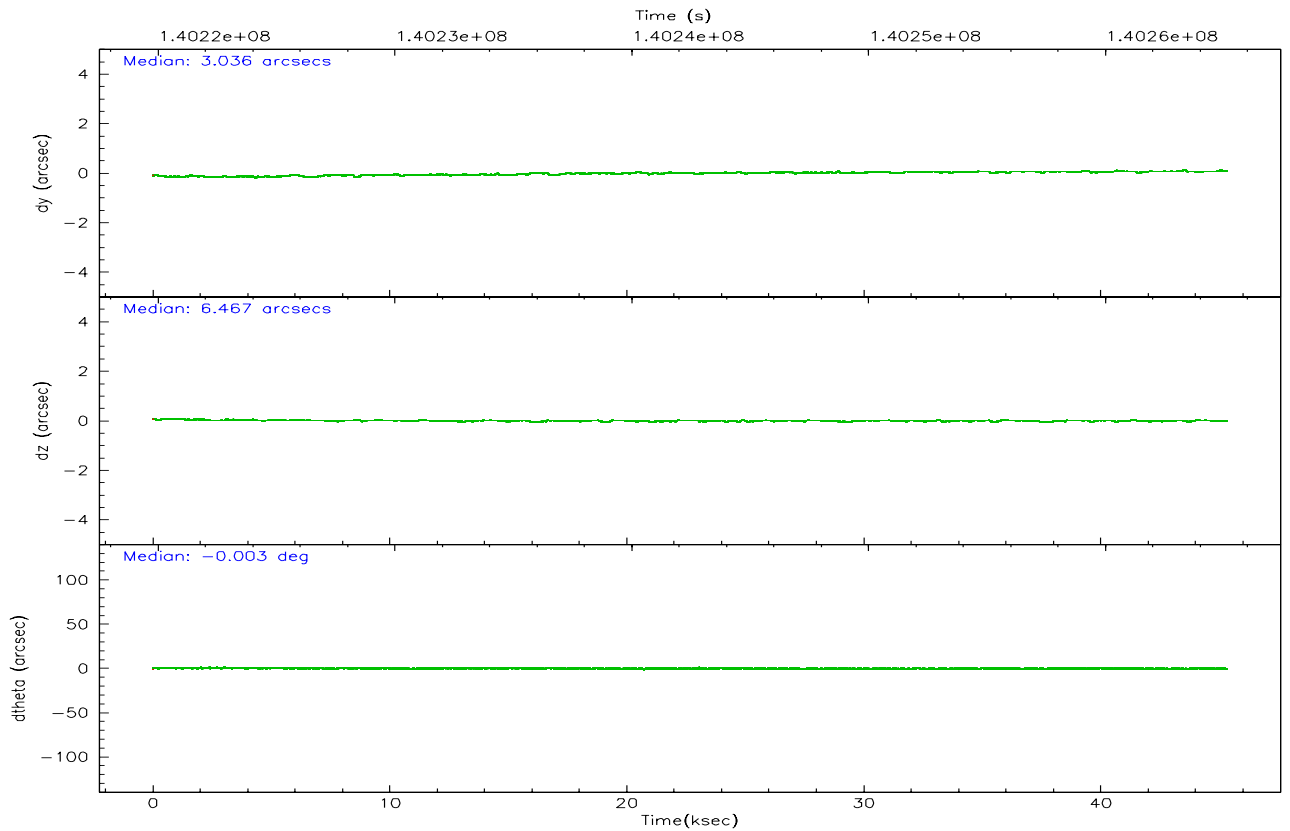
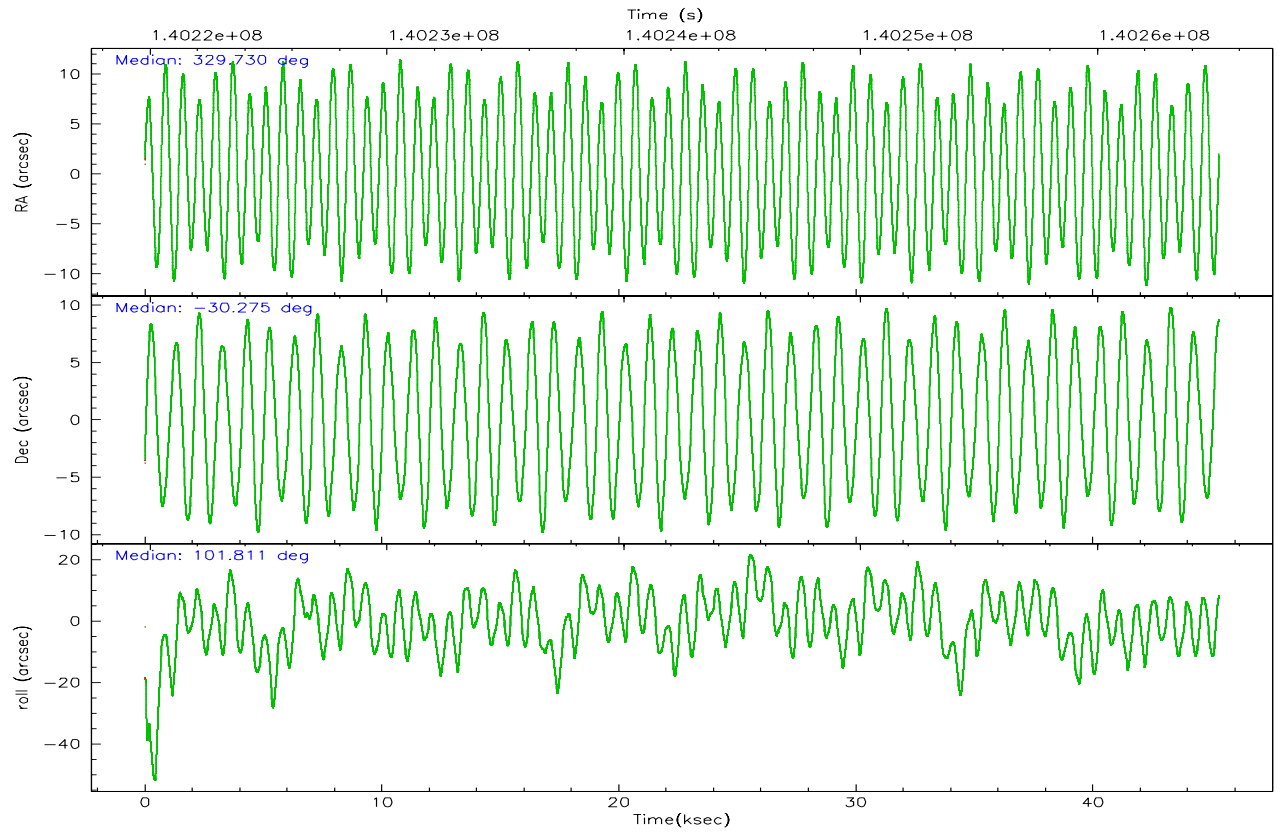
	ccd 4	ccd 5	ccd 6	ccd 7	ccd 8	ccd 9
grade 0 events	7633	50919	231685	74160	14033	6380
	12%	38%	60%	25%	18%	13%
grade 1 events	16	436	16392	184	22	14
	0%	0%	4%	0%	0%	0%
grade 2 events	1632	21525	36571	70463	3069	1212
	2%	16%	9%	23%	3%	2%
grade 3 events	987	7251	13348	31098	1932	1003
	1%	5%	3%	10%	2%	2%
grade 4 events	940	7323	13466	30277	1738	933
	1%	5%	3%	10%	2%	1%
grade 5 events	1325	3855	10638	5460	1864	1424
	2%	2%	2%	1%	2%	2%
grade 6 events	987	16244	12034	58705	3435	916
	1%	12%	3%	19%	4%	1%
grade 7 events	47591	24784	47906	24080	51788	36789
	77%	18%	12%	8%	66%	75%

2.2 Compared Parameters

Parameter	Planned	Actual	Parameter	Planned	Actual
Instrument	ACIS	ACIS	Obspar format version number	6	6
Detector	ACIS-456789	ACIS-456789	Obspar file type	PREDICTED	ACTUAL
Grating	LETG	LETG	Obspar update status	NONE	UPDATED
Data mode	FAINT	FAINT	Number of optional ACIS chips dropped	0	0
Observation mode	POINTING	POINTING	On-chip summing requested	N	N
Pointing RA	329.751818	329.7304849093633	Subarray requested	CUSTOM	1/8
Pointing Dec	-30.295191	-30.2751101104234	Subarray start row	113	113
Pointing Roll	101.664575	101.8104377525062	Subarray row count	128	128
Window start time	140054464.184000	140054464.184000	Alternating exposures requested	N	N
Window stop time	143683264.184000	143683264.184000	Primary exposure time	0.000000	0.7
SIM focus pos (mm)	-0.684267	-0.6828225247311905			
SIM defocus (mm)	0	0.001444936568705701			
SIM translation stage pos (mm)	-182.132523	-182.1370004450064			
SIM translation stage offset (mm)	-8	-7.995522138001405			
Observation start time	140219985.184000	140219519.22893			
Observation start date	2002-06-11T21:58:41	2002-06-11T21:51:59			
Observation end time	140265133.184000	140265447.94331			
Observation end date	2002-06-12T10:31:09	2002-06-12T10:37:27			
Read mode	TIMED	TIMED			

2.3 Aspect



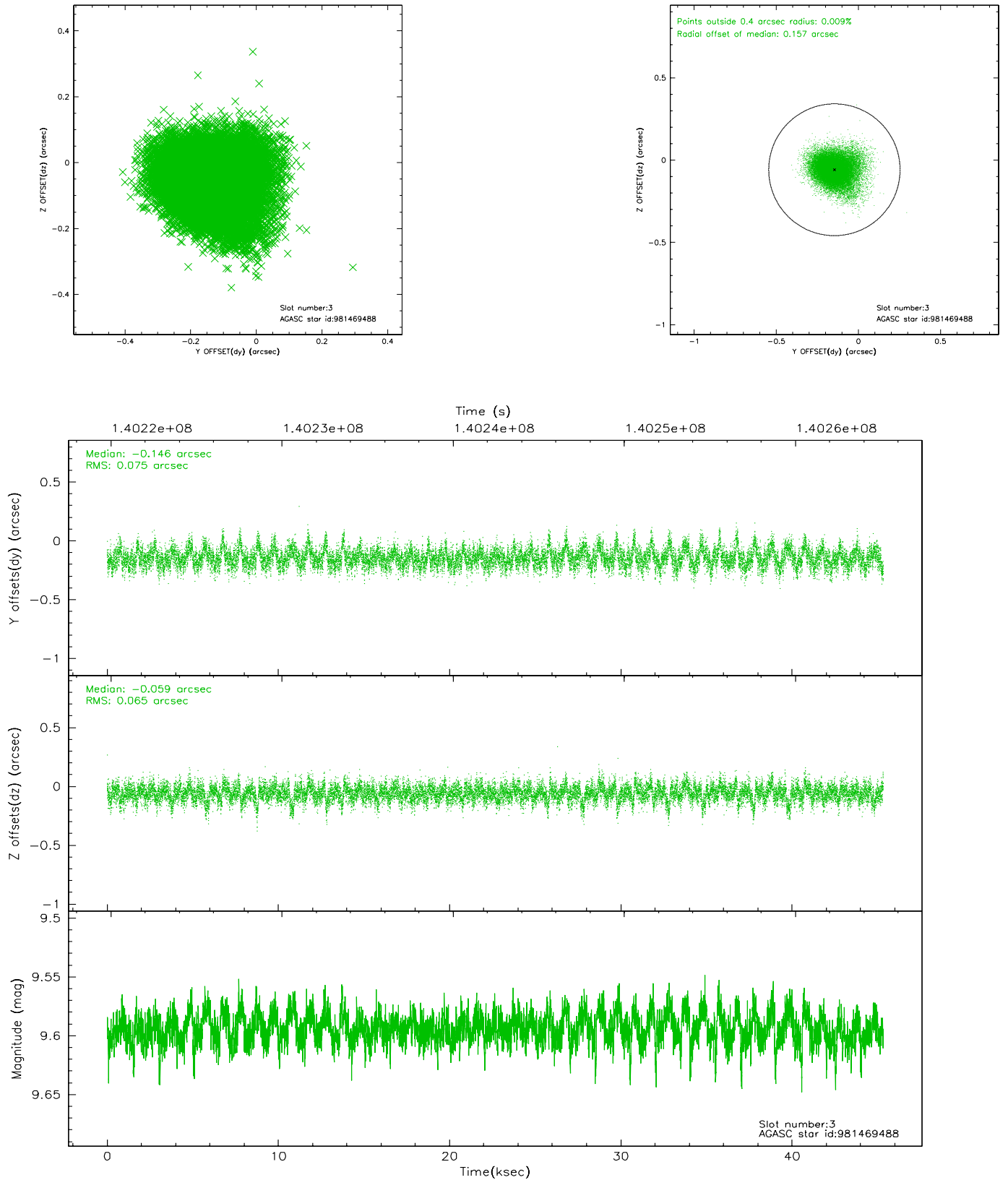


Slot Statistics

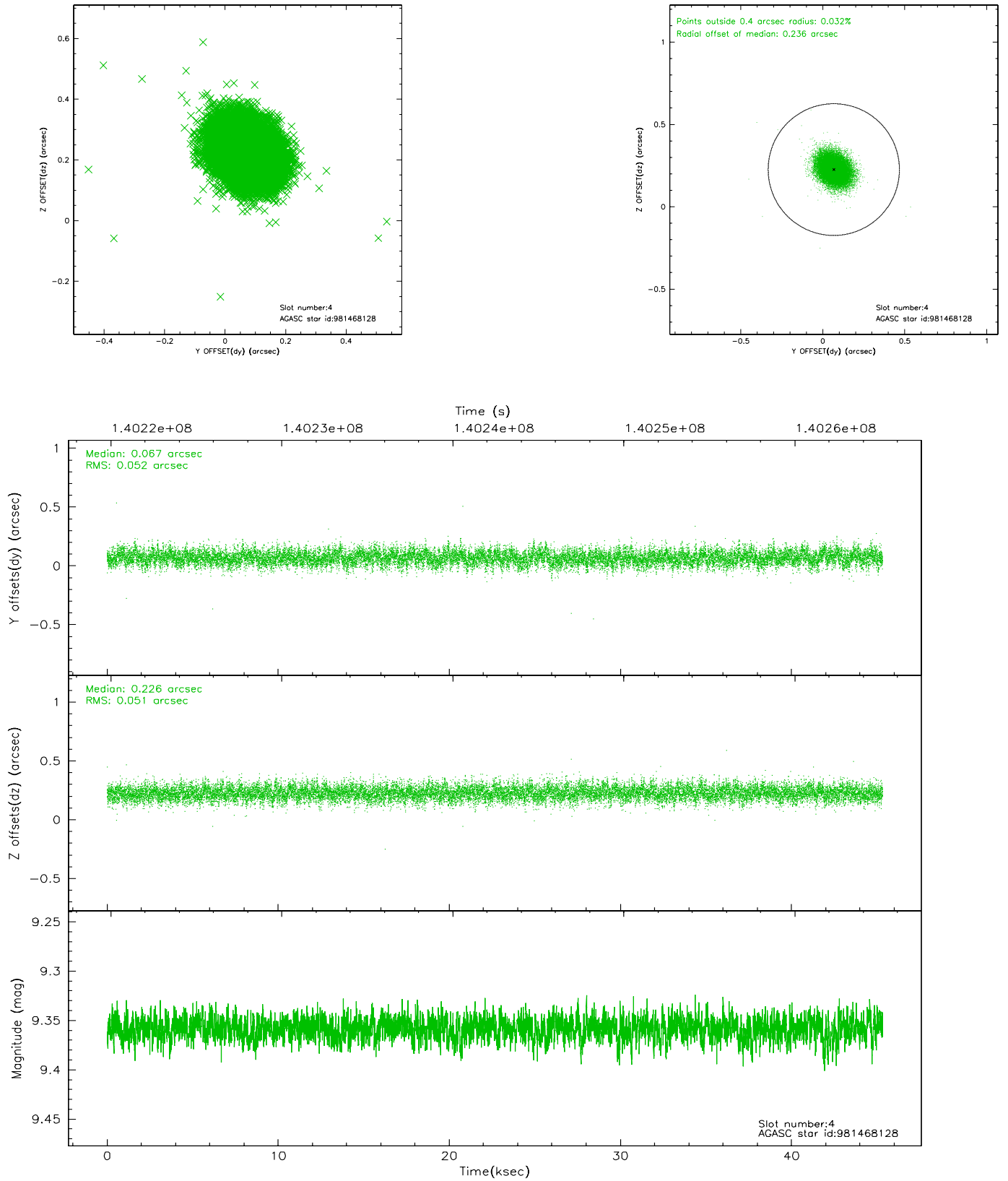
slot	status	id	mag	n_pts	med_dy	med_dz	dr1	dr2	ra	dec	mean_y	mean_z
0	FID	ACIS-S-2	7.09	11057	-0.029	-0.081	0.006	0.011	0.000000	0.000000	-755.14	-1892.41
1	FID	ACIS-S-4	7.18	11056	0.008	0.035	0.005	0.010	0.000000	0.000000	2158.20	16.14
2	FID	ACIS-S-5	7.23	11058	-0.010	0.053	0.006	0.011	0.000000	0.000000	-1807.95	9.86
3	GUIDE	981469488	9.59	22103	-0.146	-0.059	0.103	0.179	329.261199	-30.045155	1186.74	1315.47
4	GUIDE	981468128	9.36	22104	0.067	0.226	0.077	0.126	329.756350	-30.158334	479.16	-113.66
5	GUIDE	981607880	10.34	21951	0.247	0.144	0.136	0.221	330.223475	-30.497699	-1013.11	-1285.17
6	GUIDE	981478152	9.39	22098	-0.021	-0.068	0.100	0.172	329.415589	-30.057192	1048.78	852.50
7	GUIDE	912276032	9.61	22096	-0.153	-0.236	0.122	0.199	329.395967	-29.803466	1956.04	730.46

2.4 Star Slots

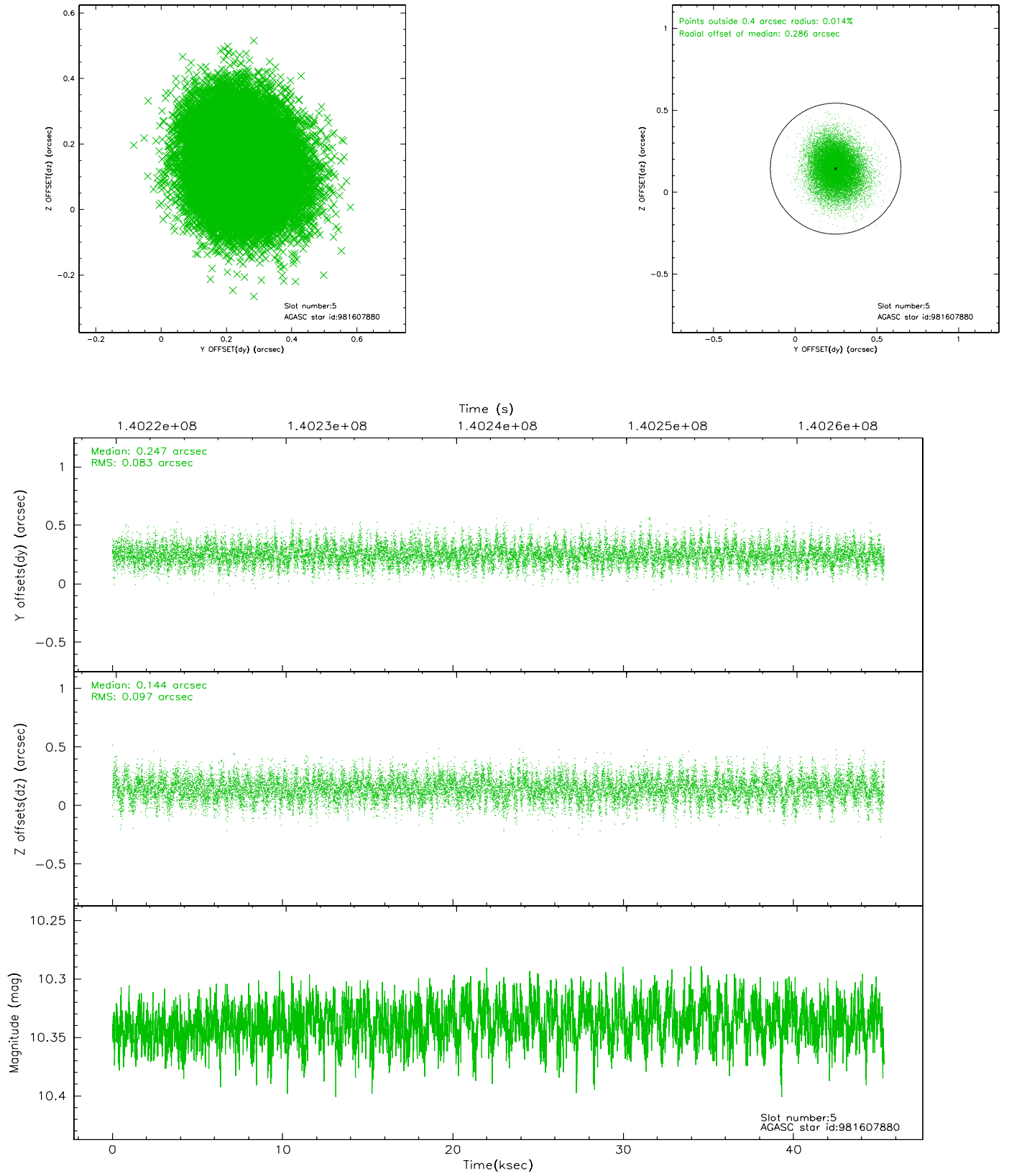
2.4.1 Slot 3



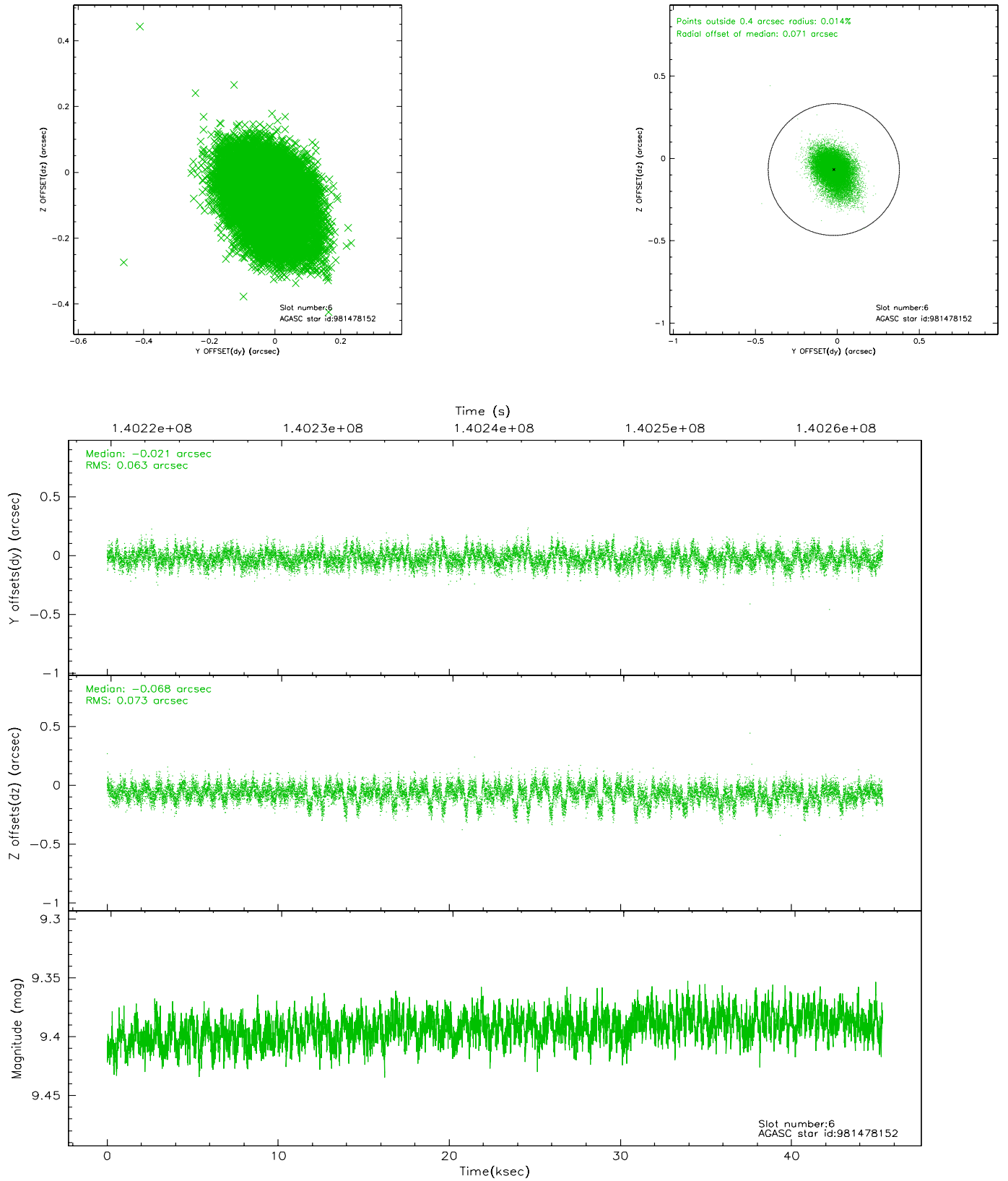
2.4.2 Slot 4



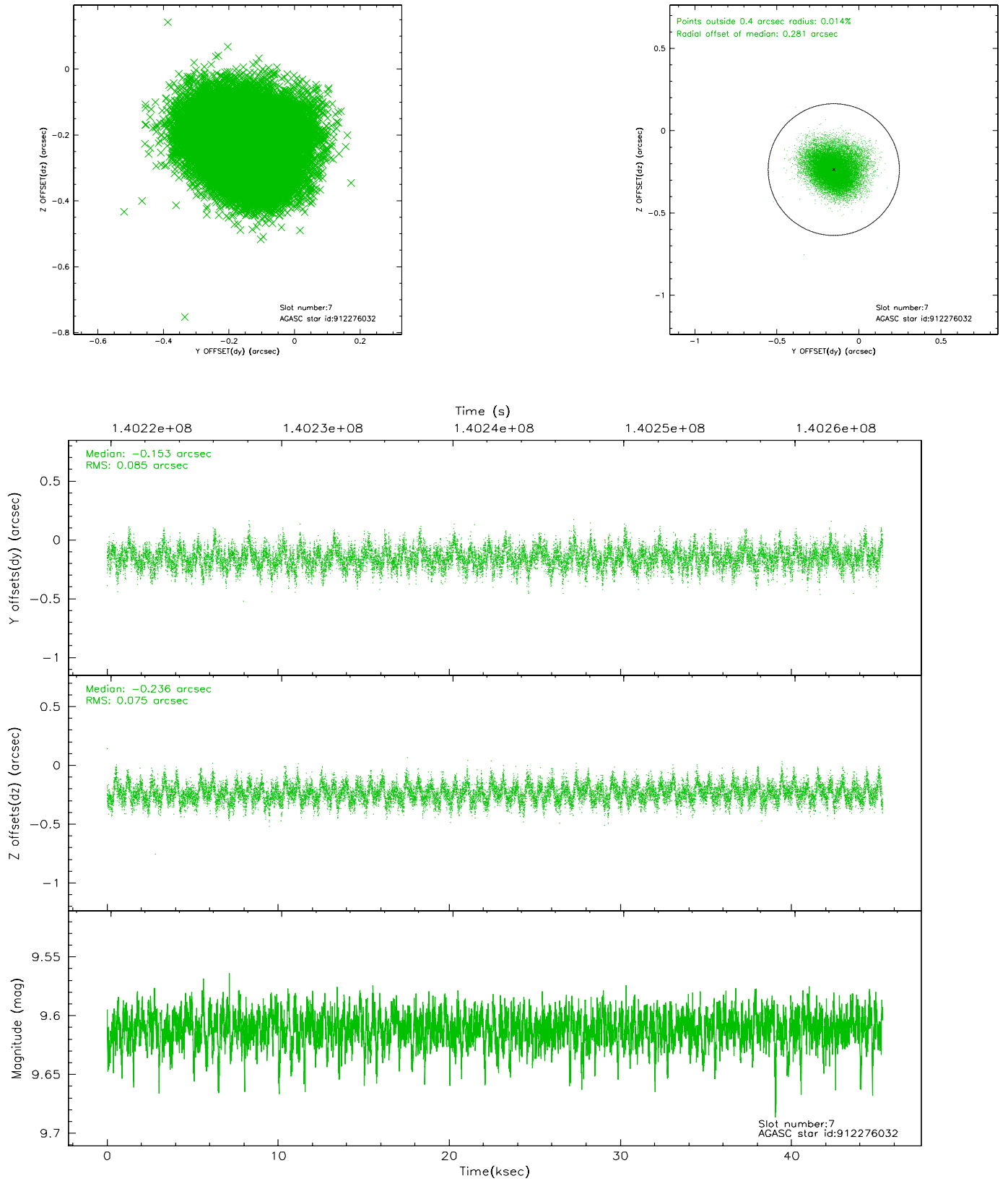
2.4.3 Slot 5



2.4.4 Slot 6

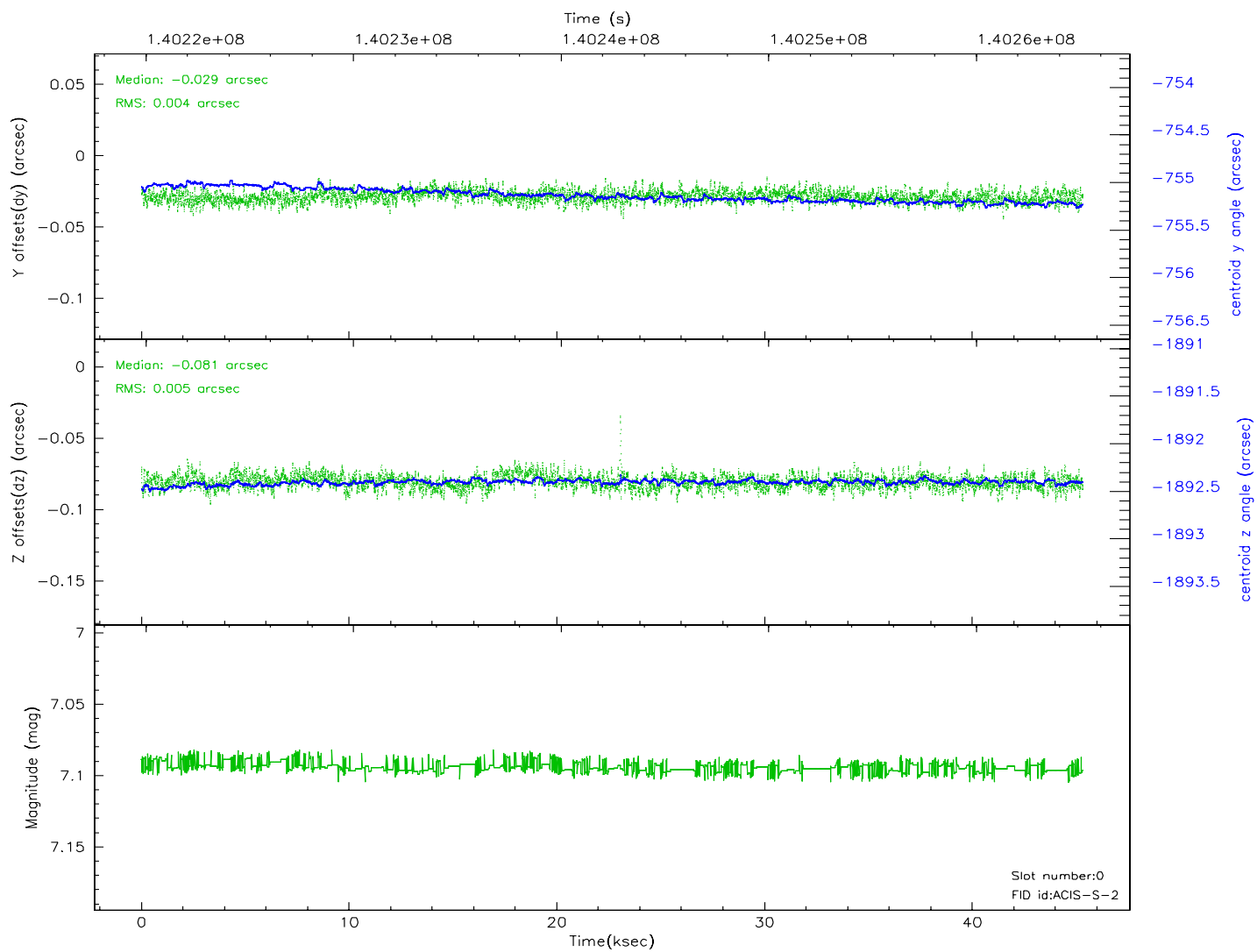
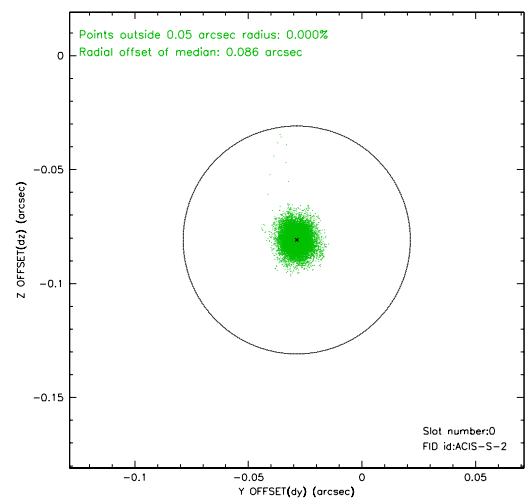
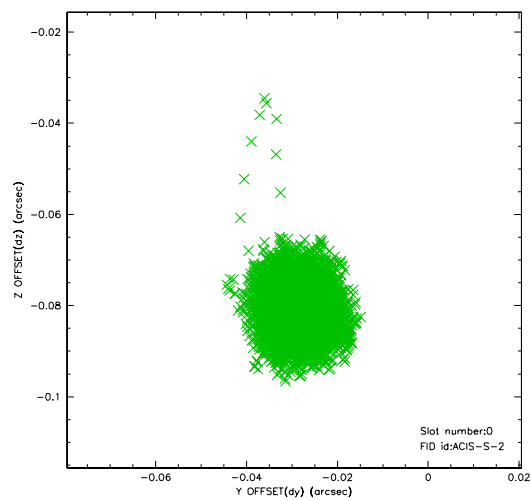


2.4.5 Slot 7

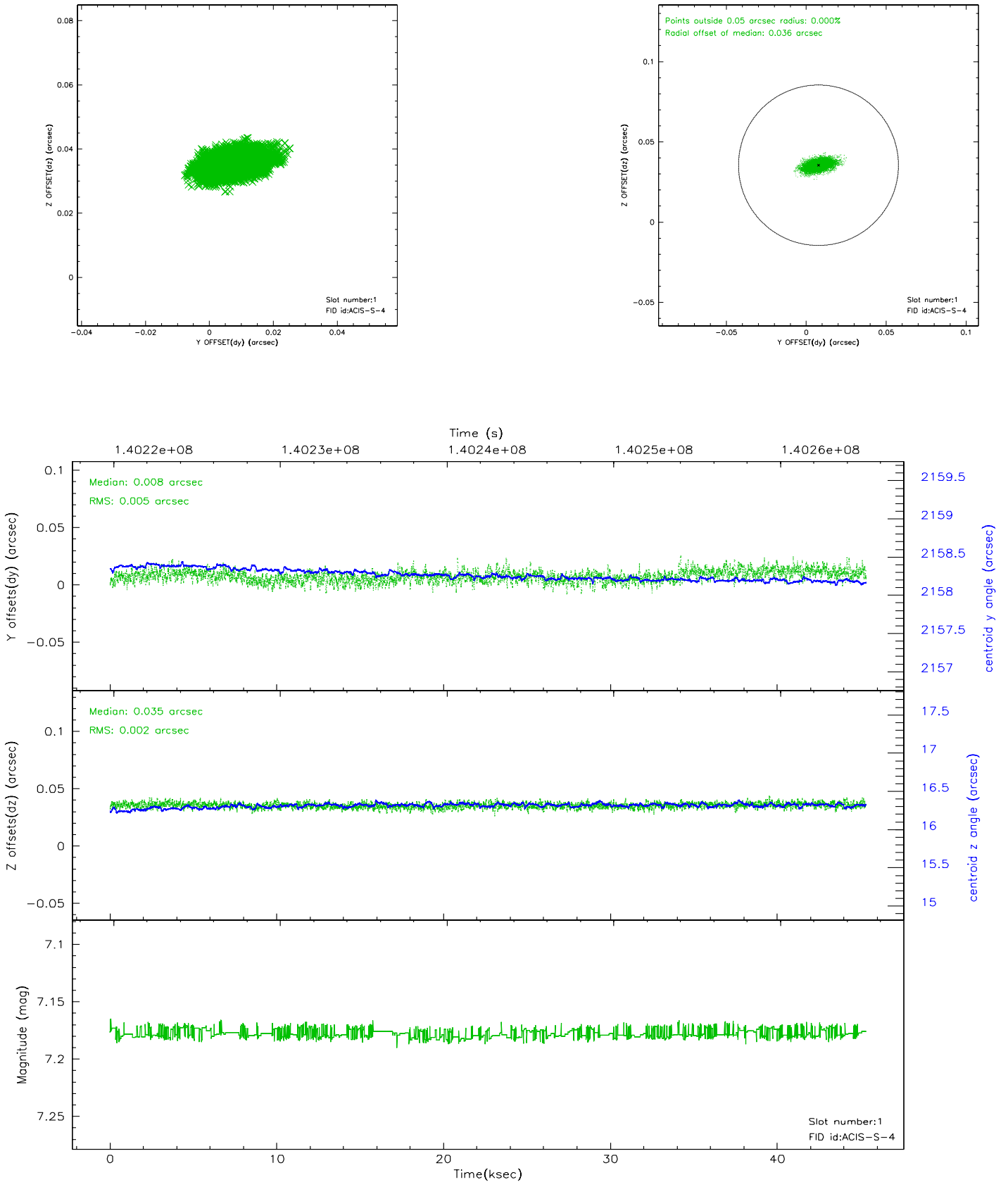


2.5 FID Slots

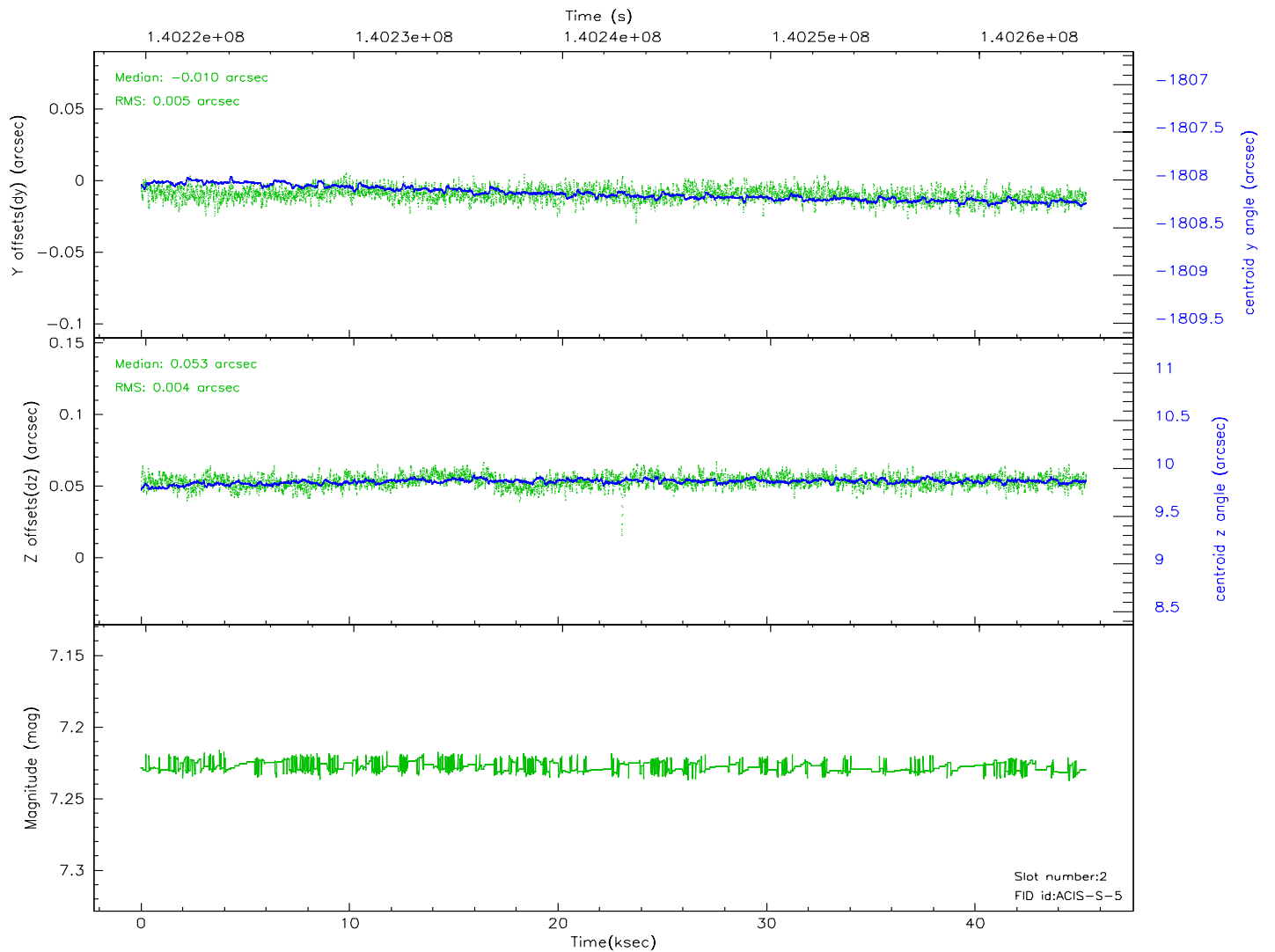
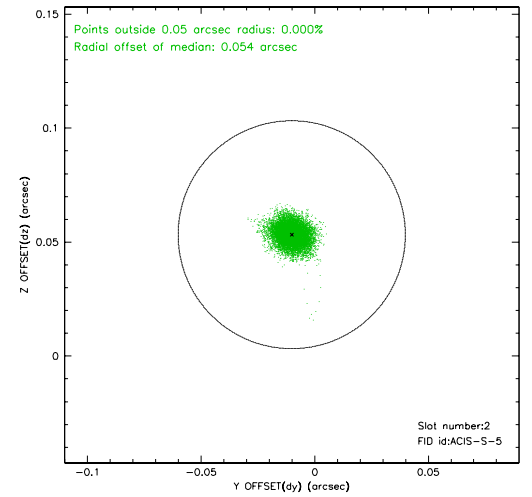
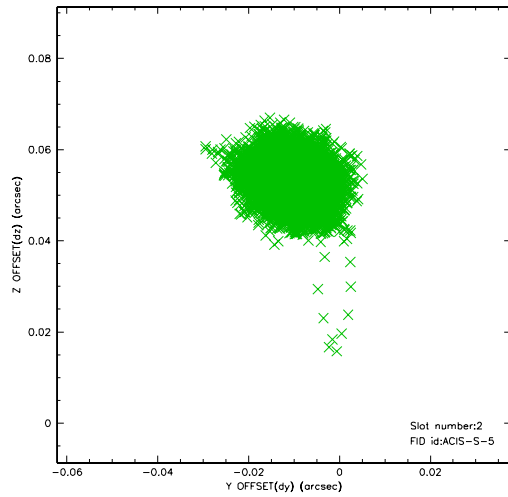
2.5.1 Slot 0



2.5.2 Slot 1

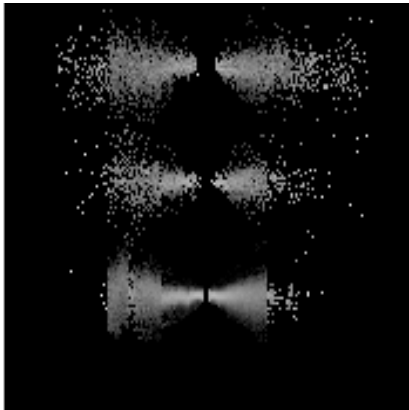


2.5.3 Slot 2

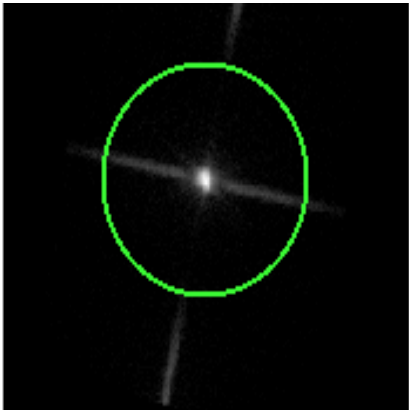


3 Gratings

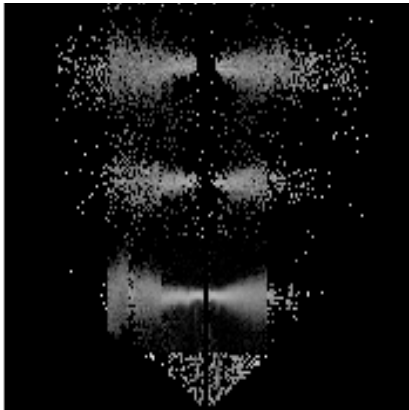
3.1 LETG Arm



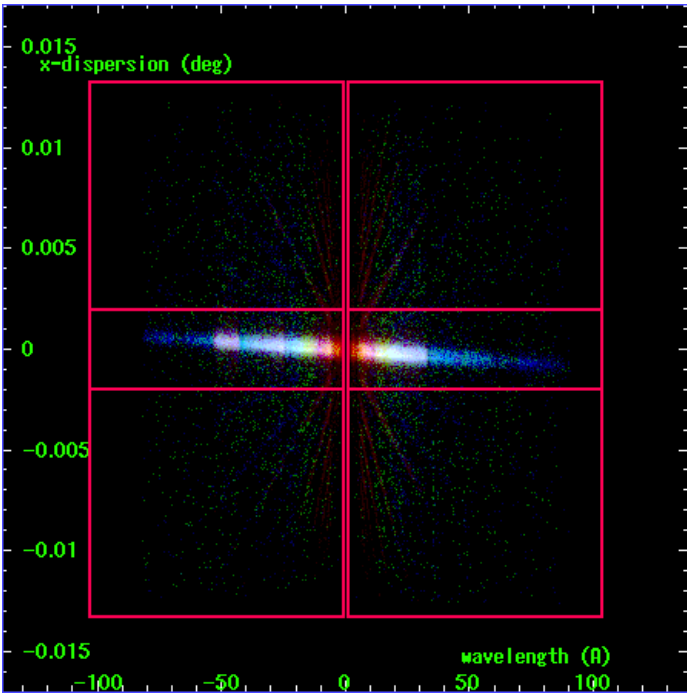
LETG Order Sort 123



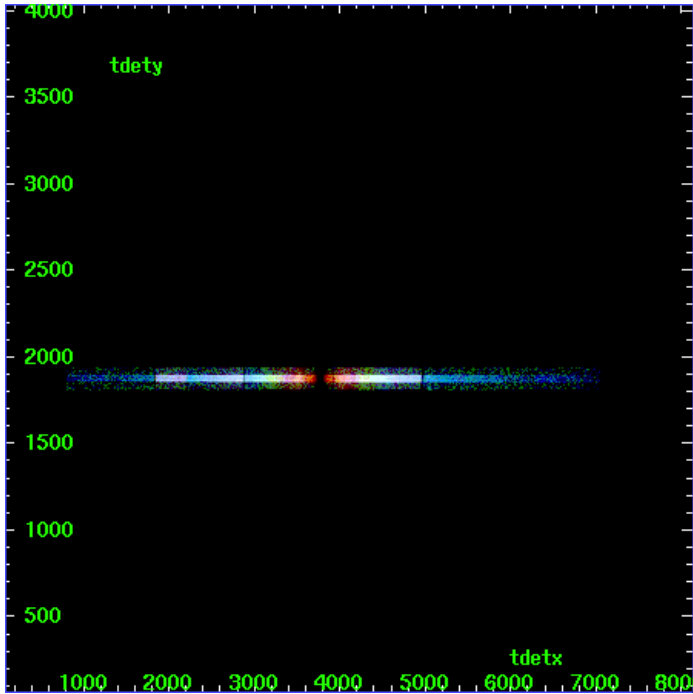
LETG Zero Order



LETG Order Sort ALL

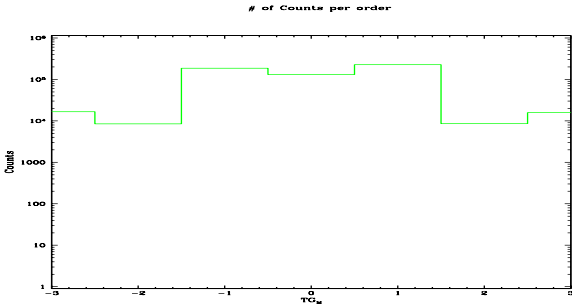


Spot Image LETG

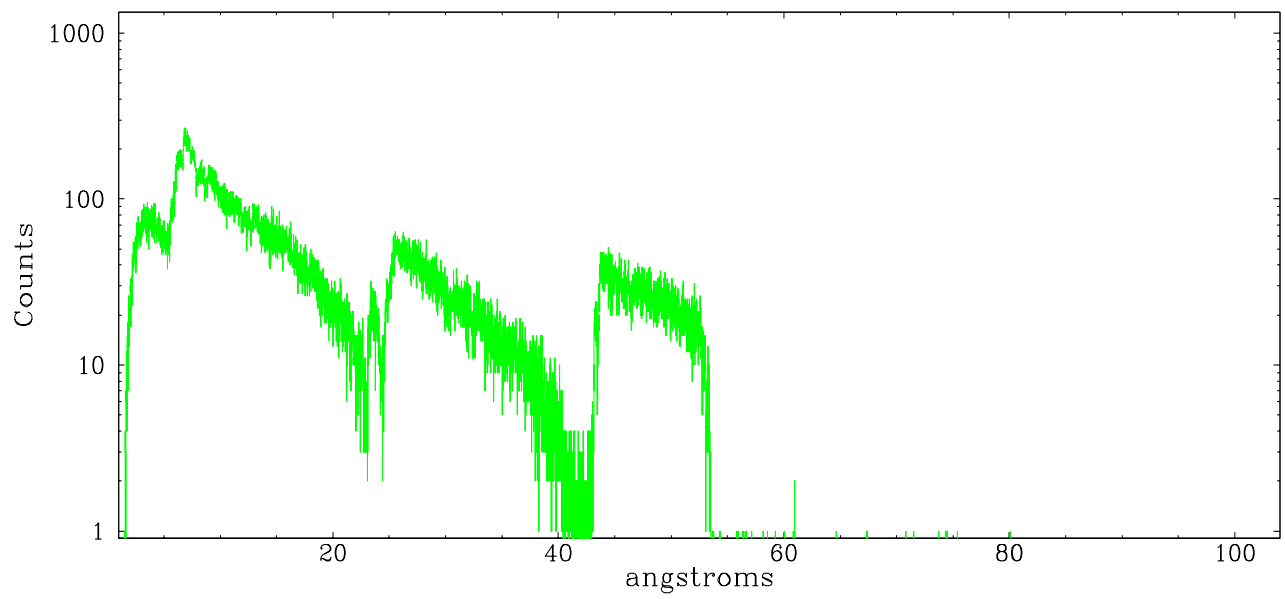


Full Detector LETG

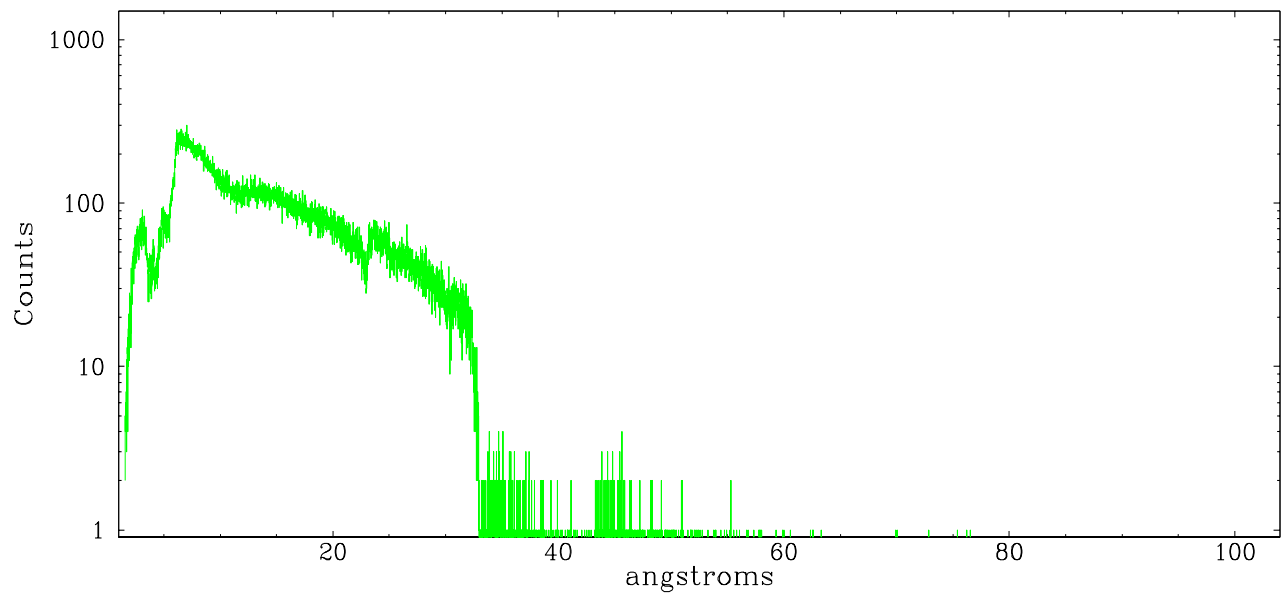
	order -3	order -2	order -1	order 0	order 1	order 2	order 3
Events	16616	8484	185997	130218	227359	8526	15728



leg order -1



leg order +1



A Summary

A.1 Status

V&V Scientist	Joy Nichols
V&V Date (YYYY-MM-DD)	2006.09.21
V&V Edition	1
V&V Disposition and Status	OK
V&V Charge Time	44.916

A.2 Comments