

# V&V Reference Report

## L2 ASCDS Version : 8.4.5

Observation 3599 - L2 Version 3  
Chandra X-Ray Center

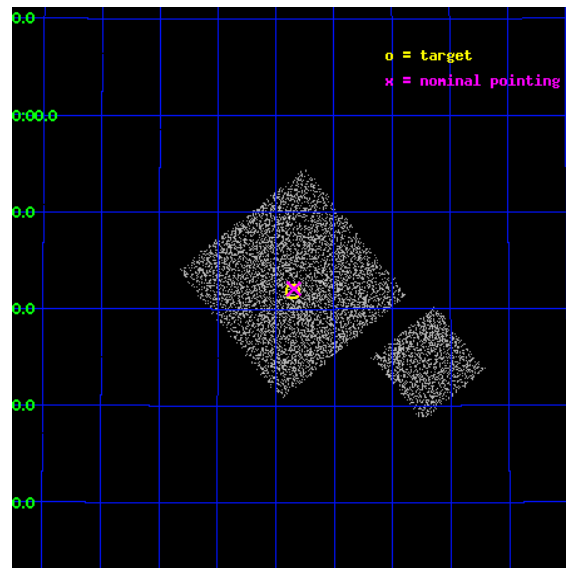
L2 Processing Date : Oct 25 2012

## Contents

<b>1</b>	<b>Front</b>	<b>2</b>
<b>2</b>	<b>OBI</b>	<b>3</b>
2.1	OBI . . . . .	3
2.1.1	Images . . . . .	3
2.1.2	Bias . . . . .	3
2.1.3	Parameters . . . . .	4
2.1.4	Events . . . . .	4
2.2	Compared Parameters . . . . .	5
2.3	Aspect . . . . .	6
2.4	Star Slots . . . . .	9
2.4.1	Slot 3 . . . . .	9
2.4.2	Slot 4 . . . . .	10
2.4.3	Slot 5 . . . . .	11
2.4.4	Slot 6 . . . . .	12
2.4.5	Slot 7 . . . . .	13
2.5	FID Slots . . . . .	14
2.5.1	Slot 0 . . . . .	14
2.5.2	Slot 1 . . . . .	15
2.5.3	Slot 2 . . . . .	16
<b>A</b>	<b>Summary</b>	<b>17</b>
A.1	Status . . . . .	17
A.2	Comments . . . . .	17

# 1 Front

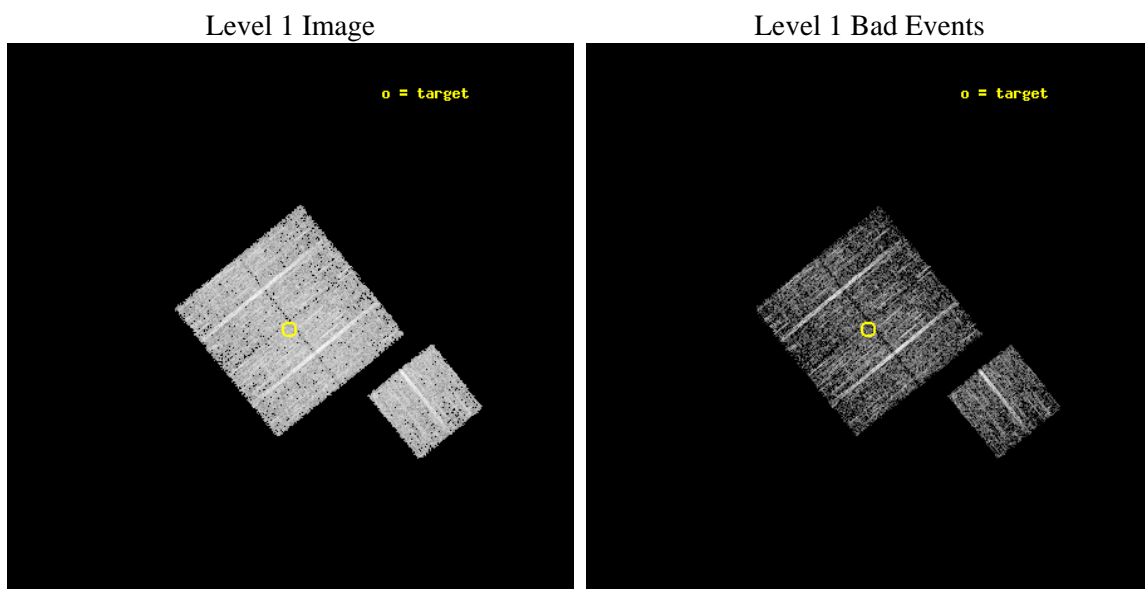
seq_num	900199	Sequence number
obs_id	3599	Observation id
title	CHANDRA LARGE SCALE SURVEY OF THE NOAO BOOTES DEEP FIELD	Proposal
observer	Dr. Stephen Murray	Principal investigator
object	NOAO FIELD F23	Source name
dtcycle	0	&#160
cycle	P	events from which exps? Prim/Second/Both
ra_targ	218.463931	Observer's specified target RA [deg]
dec_targ	35.697552	Observer's specified target Dec [deg]
ra_nom	218.46123568225	Nominal RA [deg]
dec_nom	35.701669145518	Nominal Dec [deg]
roll_nom	141.01024925405	Nominal Roll [deg]
revision	3	Processing version of data
ontime	4674.3538433313	Sum of GTIs [s]
livetime	4613.279969159	Livetime [s]
ontime0	4674.2307233214	Sum of GTIs [s]
ontime1	4674.2717633247	Sum of GTIs [s]
ontime2	4674.312803328	Sum of GTIs [s]
ontime3	4674.3538433313	Sum of GTIs [s]
ontime6	4674.1896833181	Sum of GTIs [s]
l2events	9447	Number of level 2 events



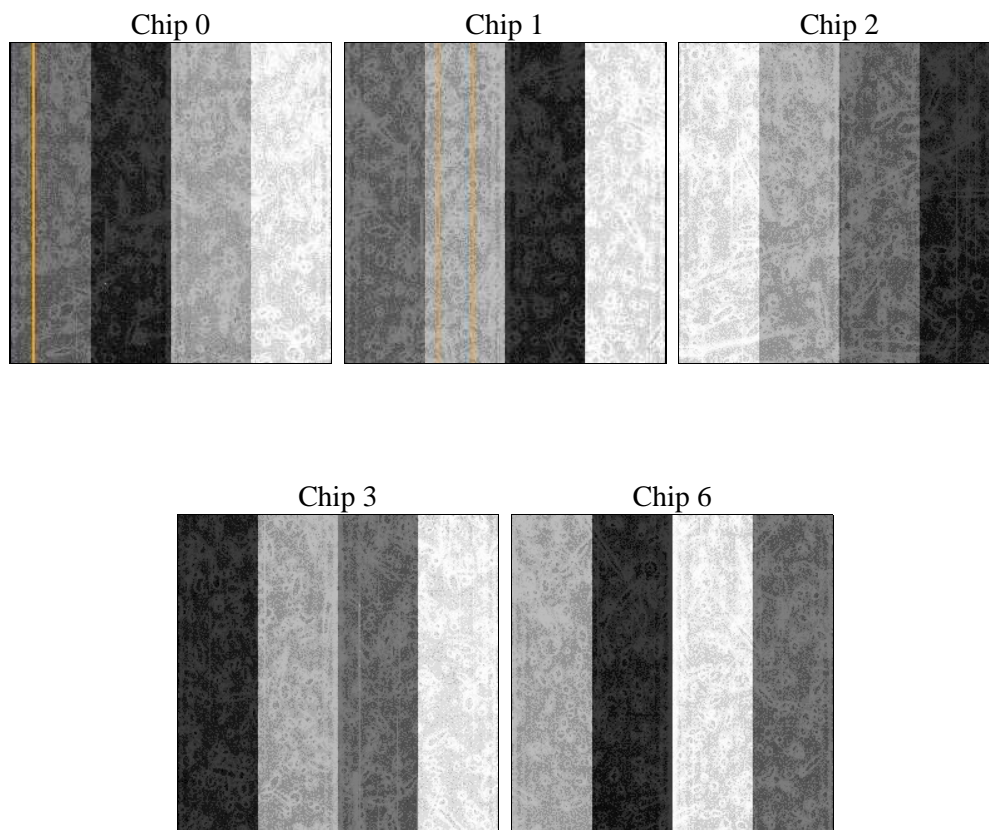
## 2 OBI

### 2.1 OBI

#### 2.1.1 Images



#### 2.1.2 Bias



### 2.1.3 Parameters

obi_num	1	Obi number	sched_exp_time	4900.000000	[s] Scheduled observation exposure time
ascdsver	8.4.5	Processing system revision	ontime	4674.3538433313	Sum of GTIs [s]
caldsver	4.5.2	&#160	ontime0	4674.2307233214	Sum of GTIs [s]
date	2012-10-25T23:39:37	Date and time of file creation	ontime1	4674.2717633247	Sum of GTIs [s]
revision	3	Processing version of data	ontime2	4674.312803328	Sum of GTIs [s]
			ontime3	4674.3538433313	Sum of GTIs [s]
			ontime6	4674.1896833181	Sum of GTIs [s]
			l1events	117844	Number of level 1 events

### 2.1.4 Events

	ccd 0	ccd 1	ccd 2	ccd 3	ccd 6
level 1 events	21423	23212	25155	24896	23158
rejected events	19139	20828	22774	22671	20972
rejected %	89%	89%	90%	91%	90%

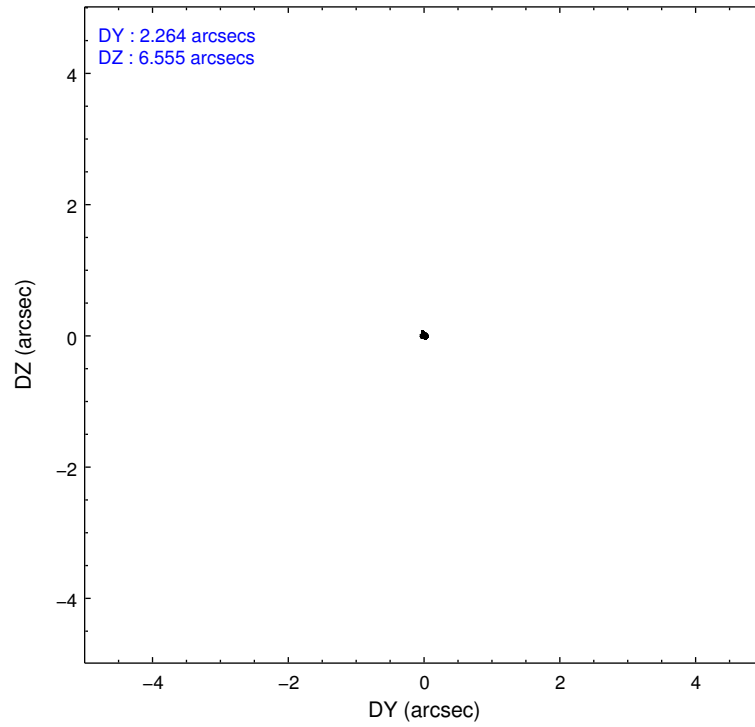
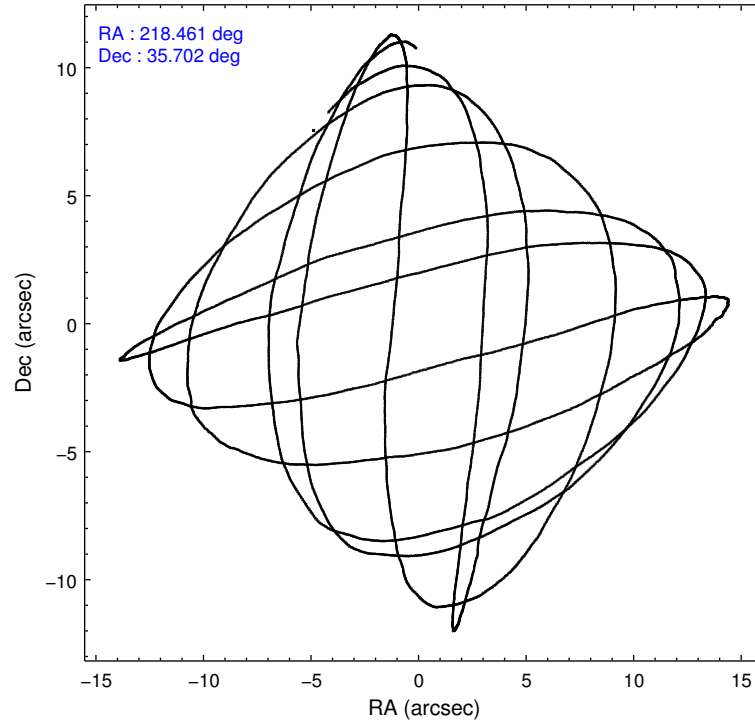
	ccd 0	ccd 1	ccd 2	ccd 3	ccd 6
grade 0 events	858	814	894	837	783
	4%	3%	3%	3%	3%
grade 1 events	7	2	16	16	15
	0%	0%	0%	0%	0%
grade 2 events	518	573	524	465	467
	2%	2%	2%	1%	2%
grade 3 events	250	271	301	239	254
	1%	1%	1%	0%	1%
grade 4 events	237	258	278	280	233
	1%	1%	1%	1%	1%
grade 5 events	675	714	663	770	747
	3%	3%	2%	3%	3%
grade 6 events	424	471	387	409	451
	1%	2%	1%	1%	1%
grade 7 events	18454	20109	22092	21880	20208
	86%	86%	87%	87%	87%

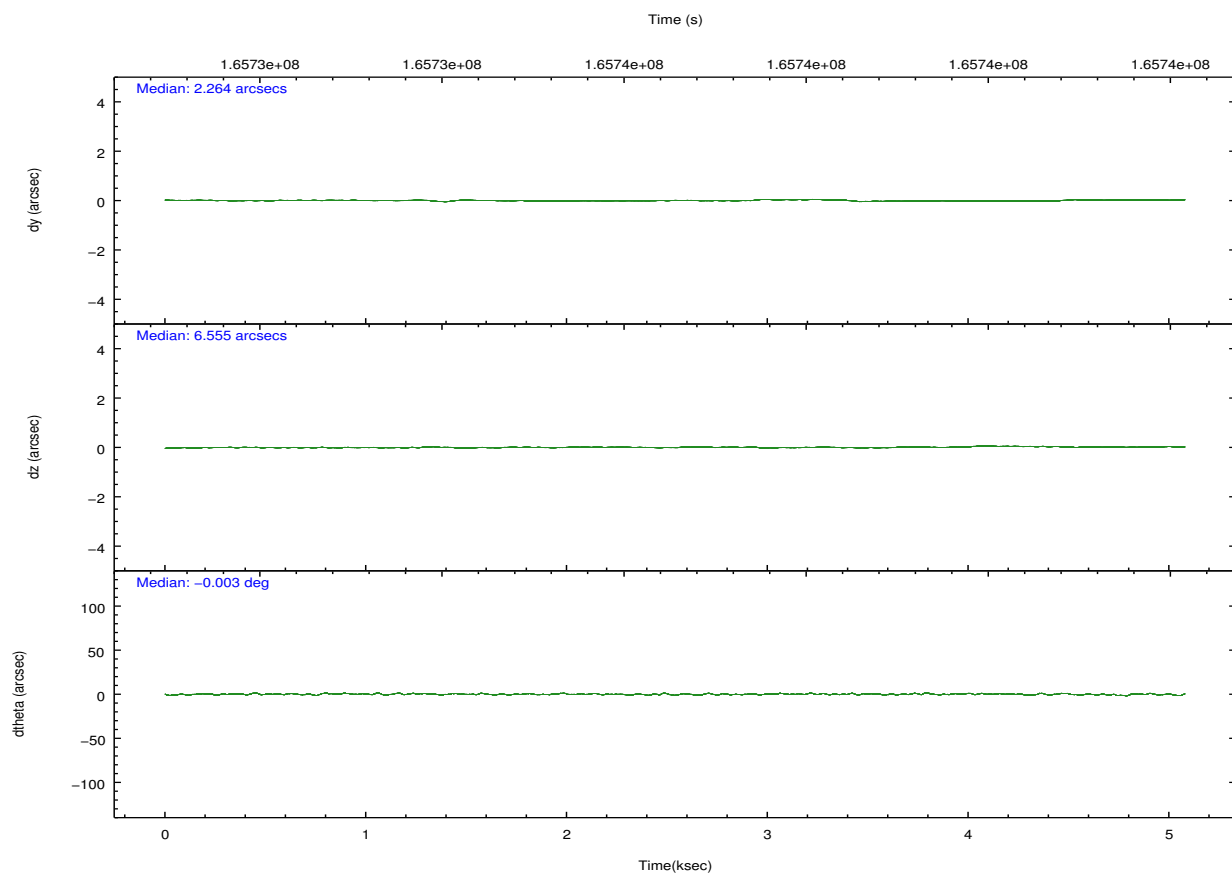
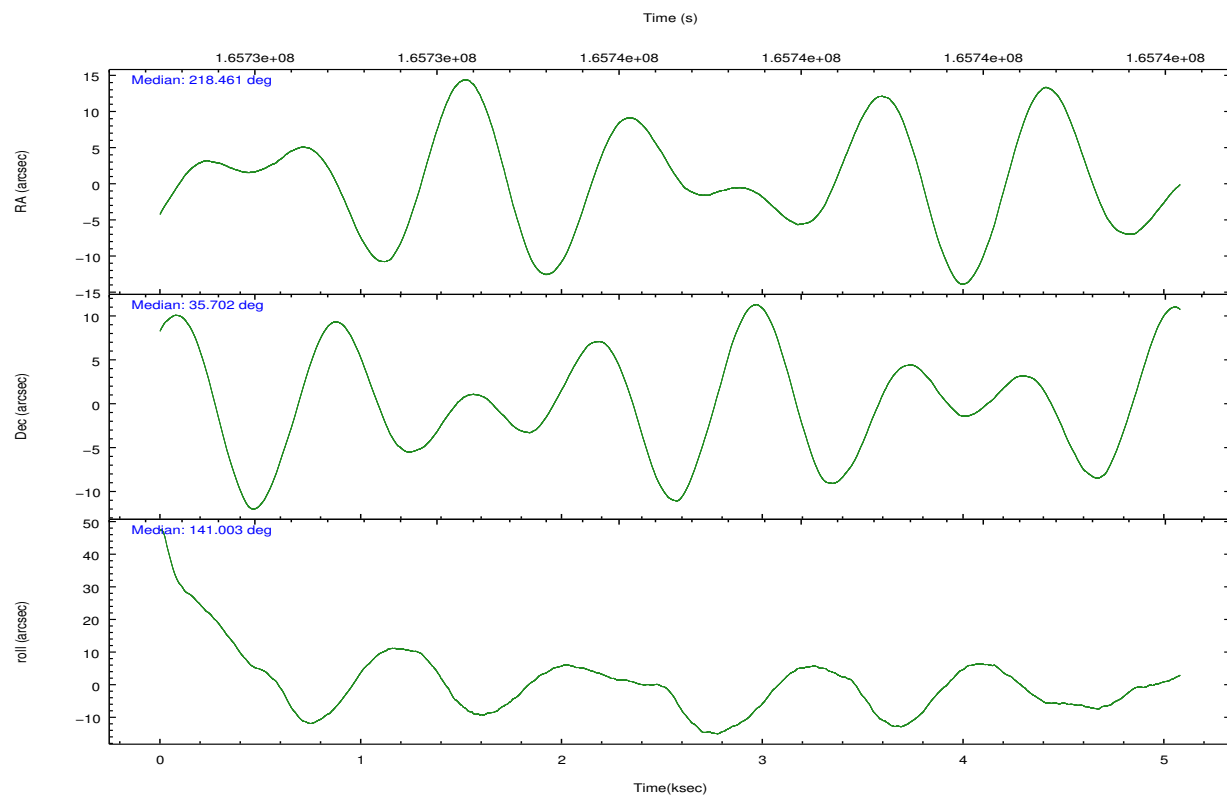


## 2.2 Compared Parameters

Parameter	Planned	Actual	Parameter	Planned	Actual
Instrument	ACIS	ACIS	Obspar format version number	7	7
Detector	ACIS-01236	ACIS-01236	Obspar file type	PREDICTED	ACTUAL
Grating	NONE	NONE	Obspar update status	NONE	UPDATED
Data mode	VFAINT	VFAINT	Number of optional ACIS chips dropped	0	0
Observation mode	POINTING	POINTING	On-chip summing requested	N	N
[deg] Pointing RA	218.494569	218.4612356822483	Subarray requested	NONE	NONE
[deg] Pointing Dec	35.697466	35.70166914551816	Alternating exposures requested	N	N
[deg] Pointing Roll	140.782120	141.0102492540546	[s] Primary exposure time	0.000000	3.1
[mm] SIM focus pos	-0.782348	-0.7809083437167272			
[mm] SIM defocus	0	0.001439871863259334			
[mm] SIM translation stage pos	-233.592463	-233.5874344608287			
[mm] SIM translation stage offset	0	-0.005018542100998502			
[s] Observation start time (MET)	165732917.184000	165732541.60186			
Observation start date	2003-04-03T04:54:13	2003-04-03T04:49:01			
[s] Observation end time (MET)	165737817.184000	165738009.97709			
Observation end date	2003-04-03T06:15:53	2003-04-03T06:20:09			
Read mode	TIMED	TIMED			

## 2.3 Aspect



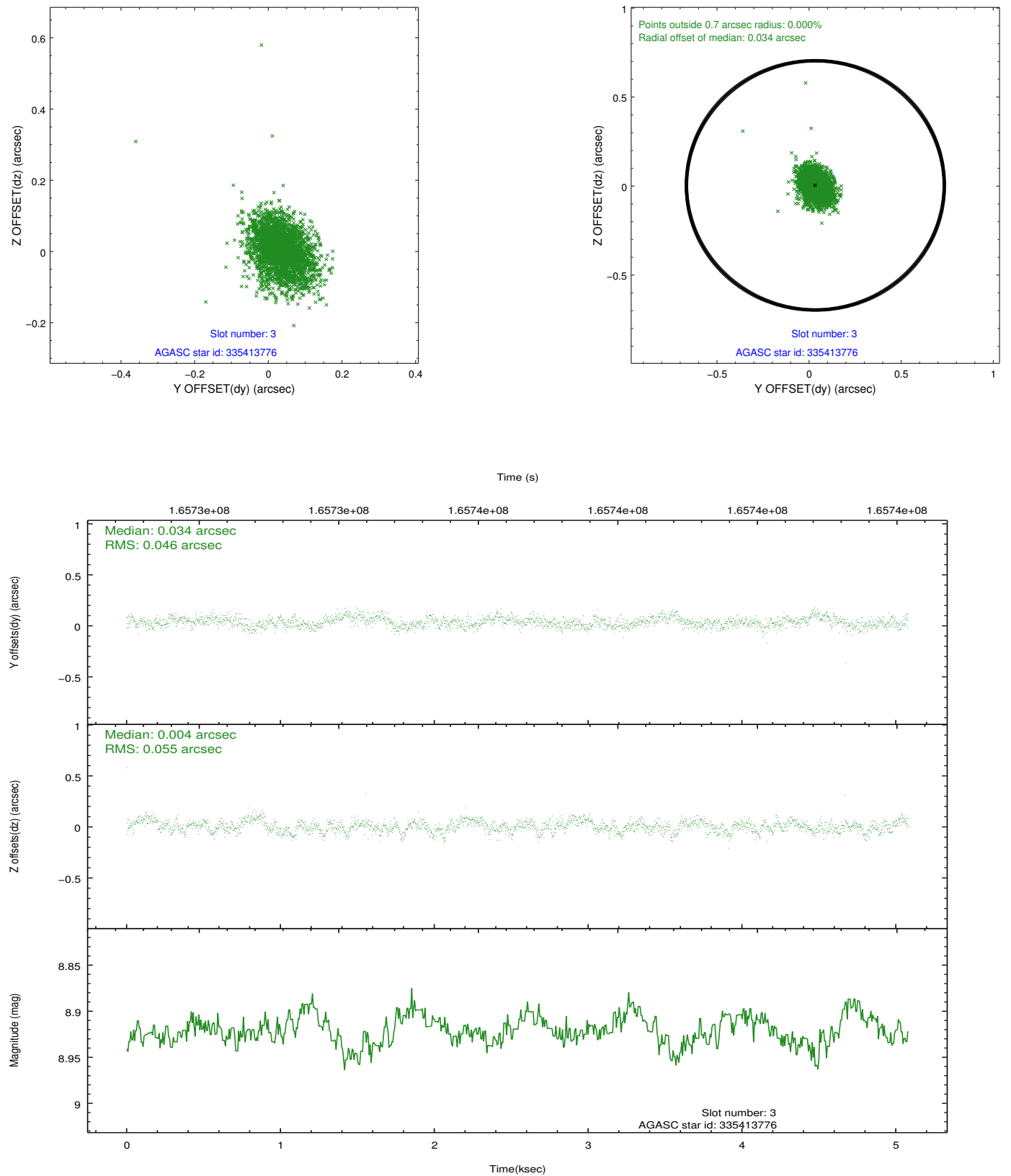


### Slot Statistics

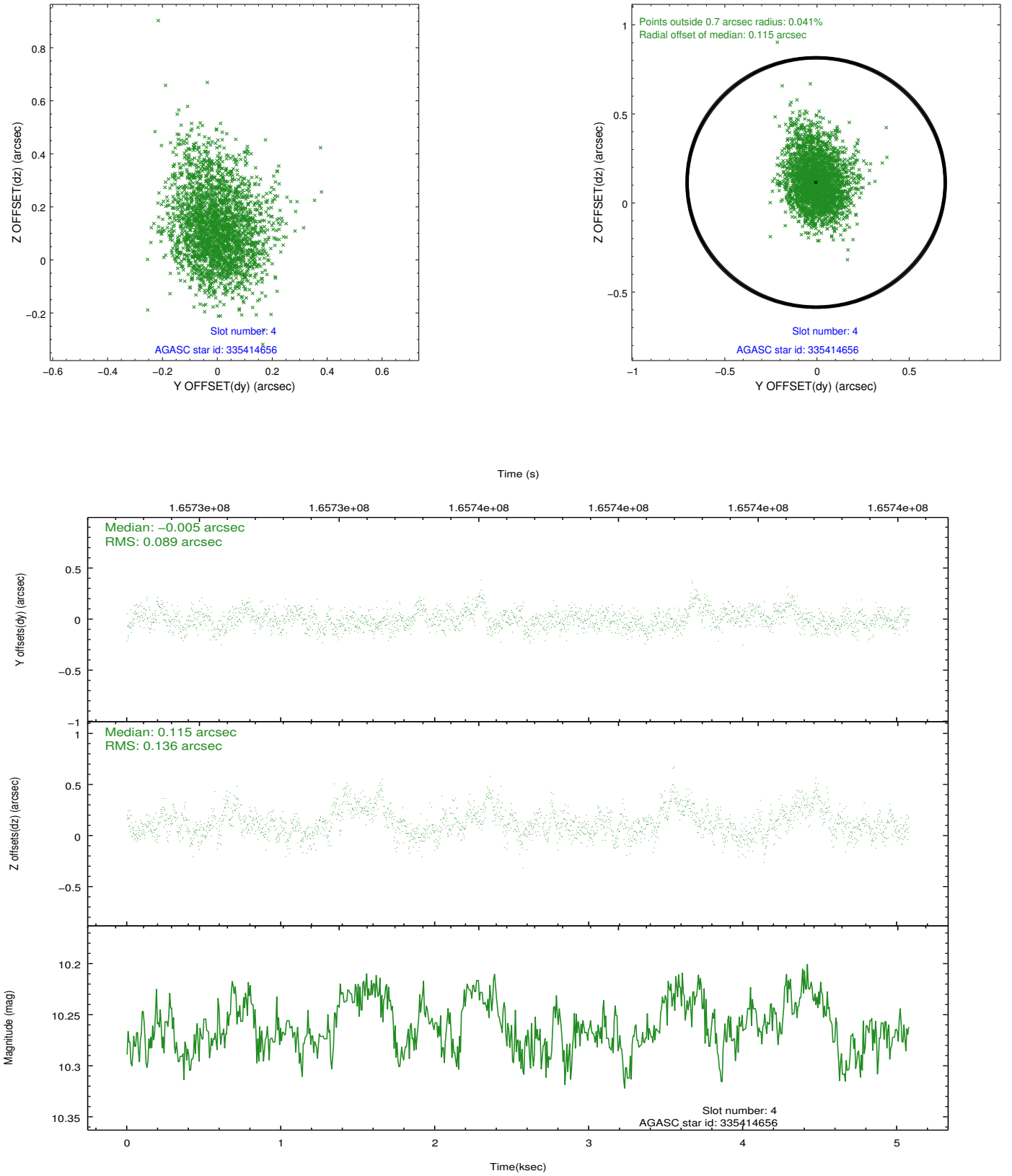
slot	status	id	mag	n_pts	med_dy	med_dz	dr1	dr2	ra	dec	mean_y	mean_z
0	FID	ACIS-I-2	7.16	1239	-0.050	-0.091	0.009	0.015	0.000000	0.000000	-756.67	-836.40
1	FID	ACIS-I-4	7.19	1239	0.054	0.059	0.006	0.010	0.000000	0.000000	2156.94	1069.34
2	FID	ACIS-I-5	7.23	1239	-0.106	0.100	0.009	0.014	0.000000	0.000000	-1809.02	1068.57
3	GUIDE	335413776	8.92	2478	0.034	0.004	0.075	0.123	218.421411	36.051962	972.37	-853.93
4	GUIDE	335414656	10.26	2454	-0.005	0.115	0.168	0.289	218.885865	36.185124	231.71	-2080.72
5	GUIDE	335421696	8.95	2477	-0.006	-0.049	0.080	0.134	218.045699	35.772449	1188.28	616.80
6	GUIDE	335422272	9.49	2464	-0.043	-0.070	0.114	0.176	217.586135	35.522660	1672.41	2161.28
7	GUIDE	335549864	7.52	2477	0.013	-0.001	0.062	0.097	219.286726	35.929745	-1253.32	-2114.37

## 2.4 Star Slots

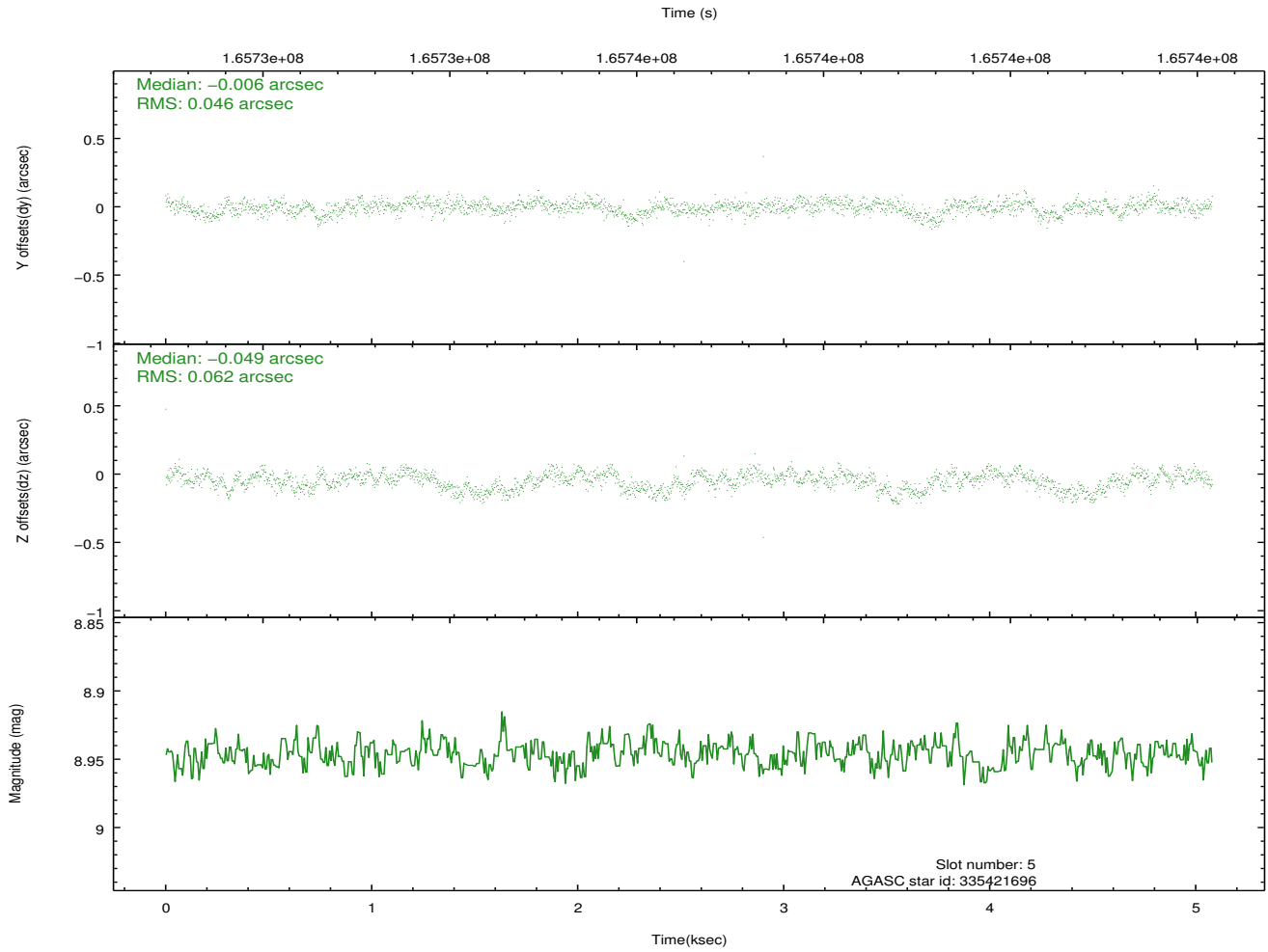
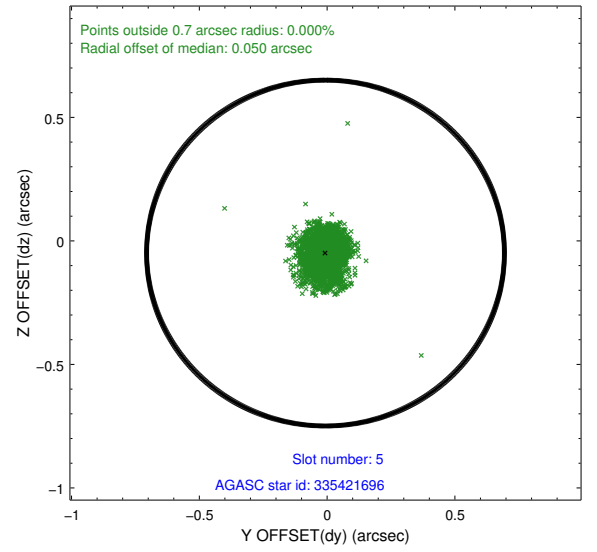
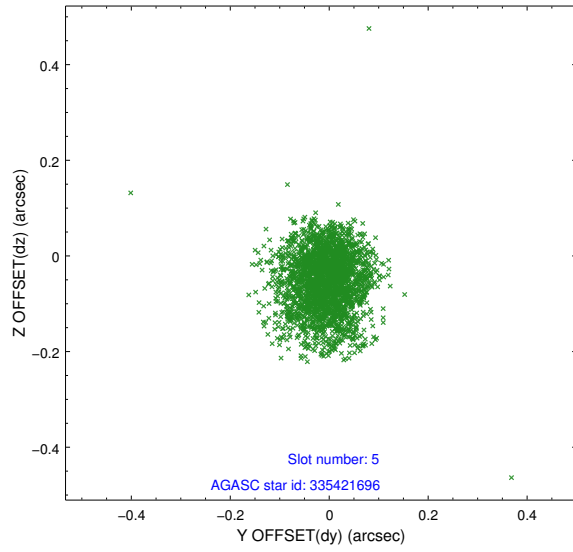
### 2.4.1 Slot 3



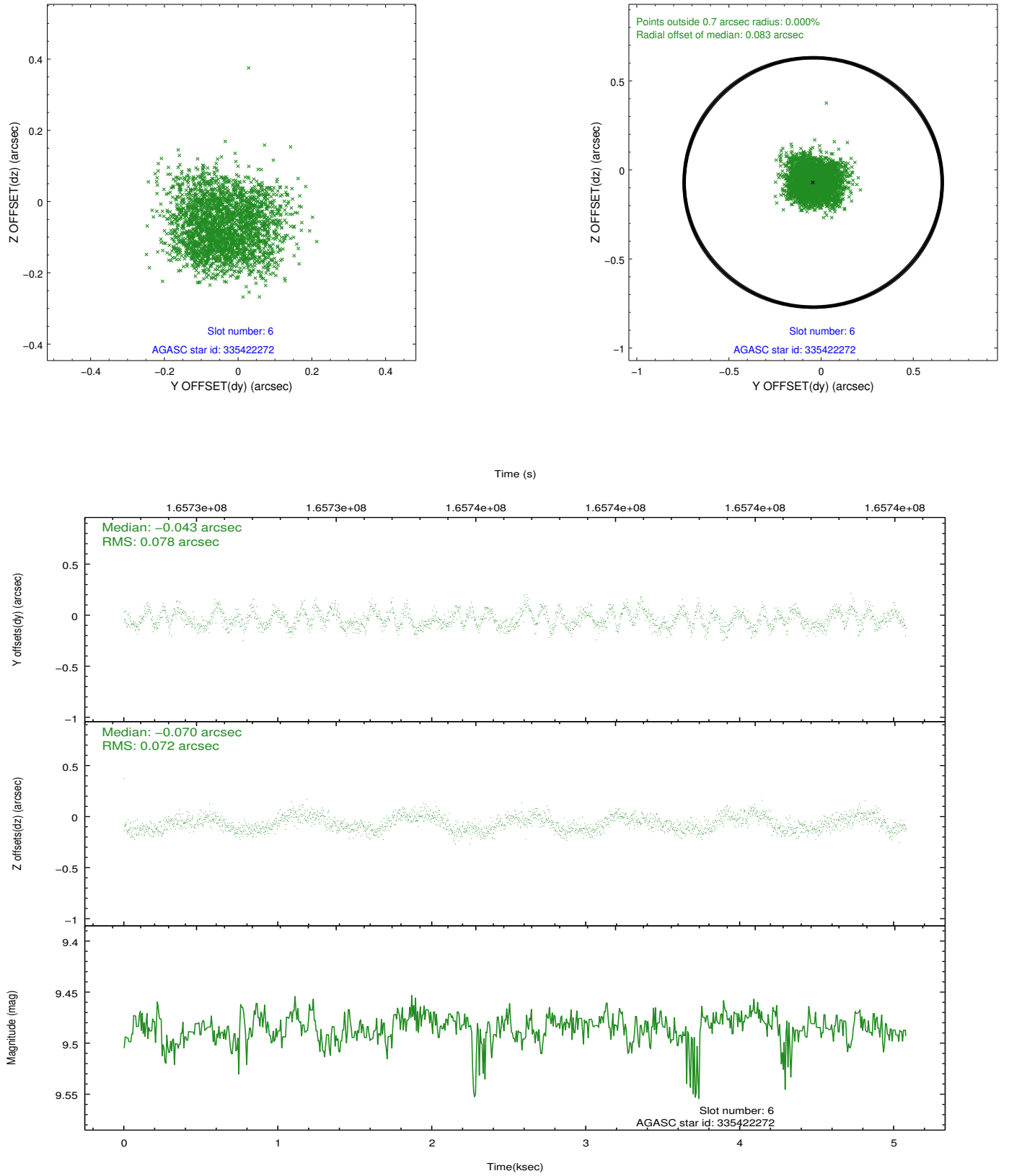
## 2.4.2 Slot 4



### 2.4.3 Slot 5

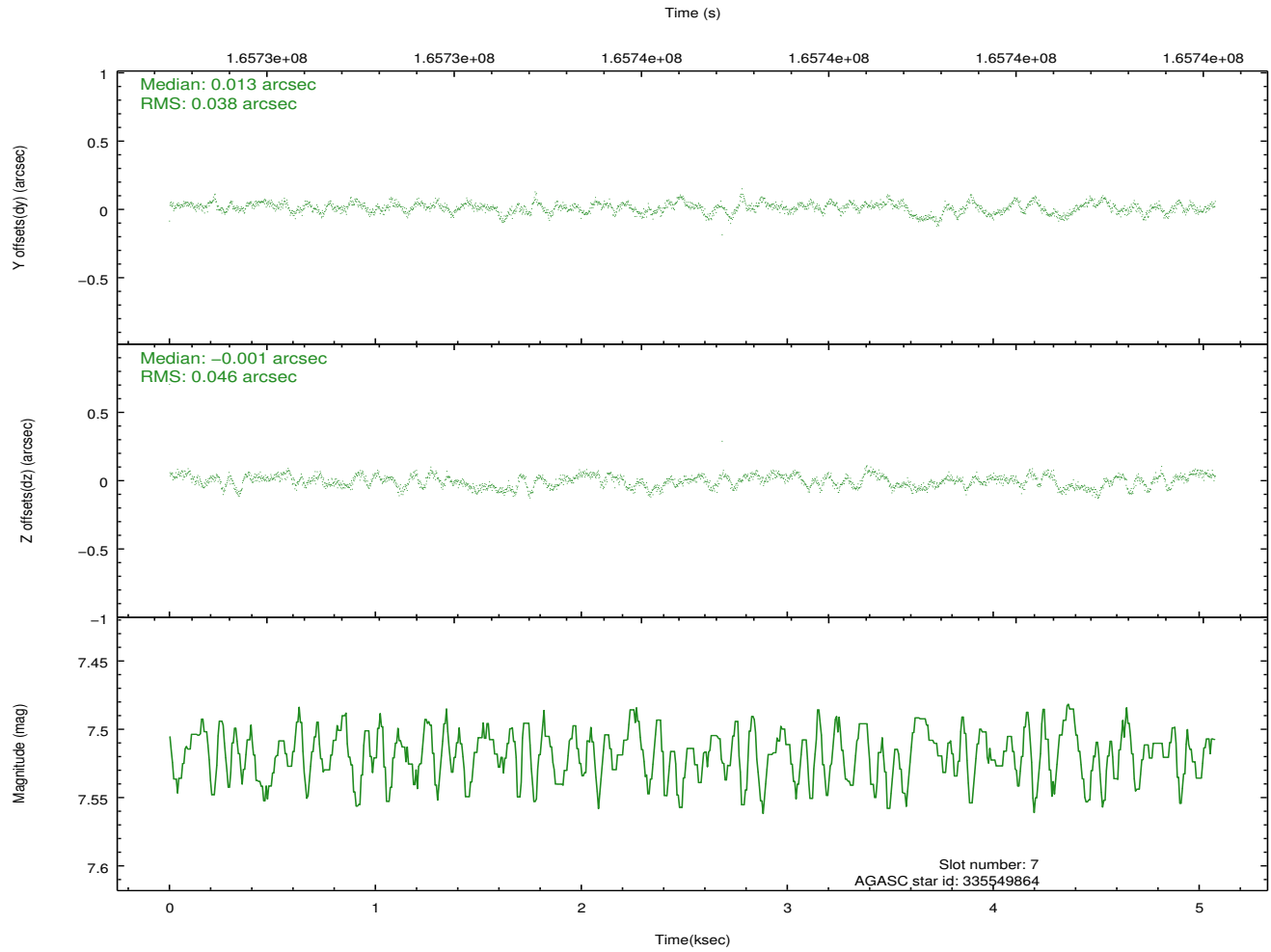
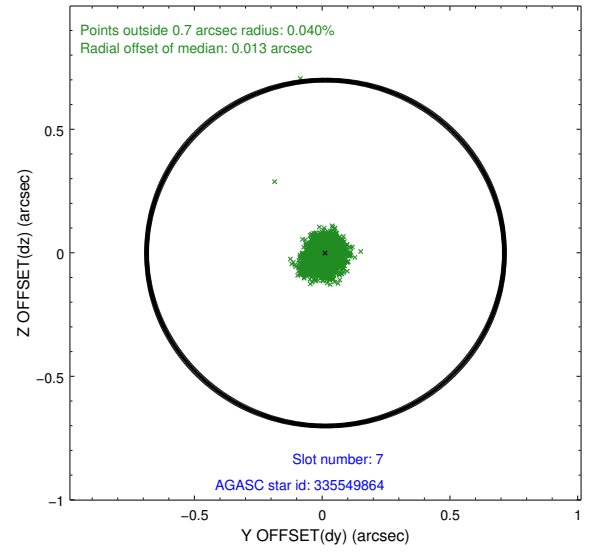
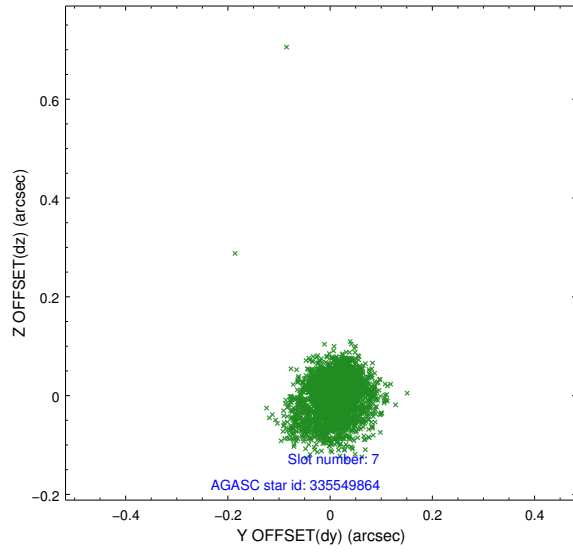


## 2.4.4 Slot 6



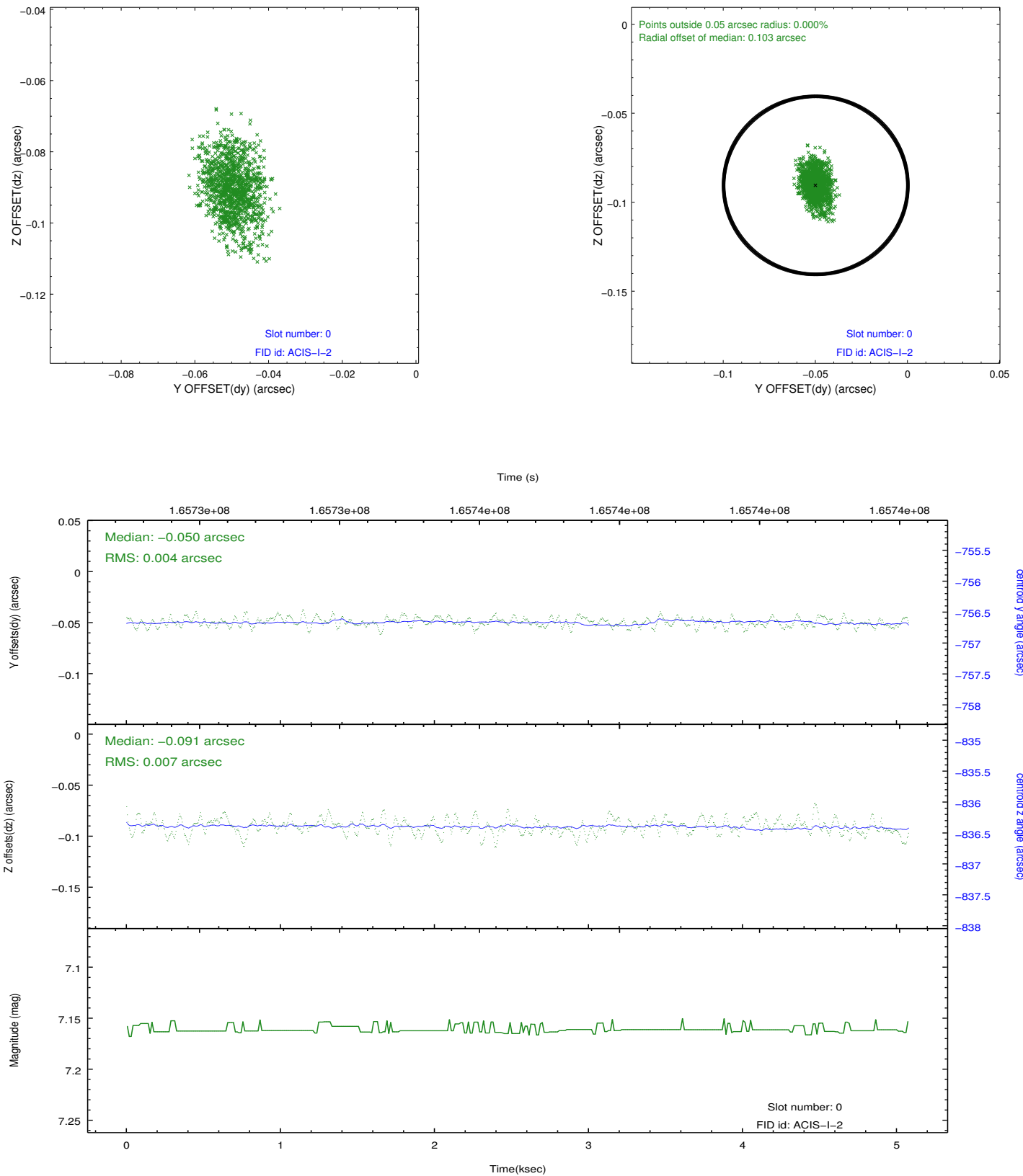


## 2.4.5 Slot 7

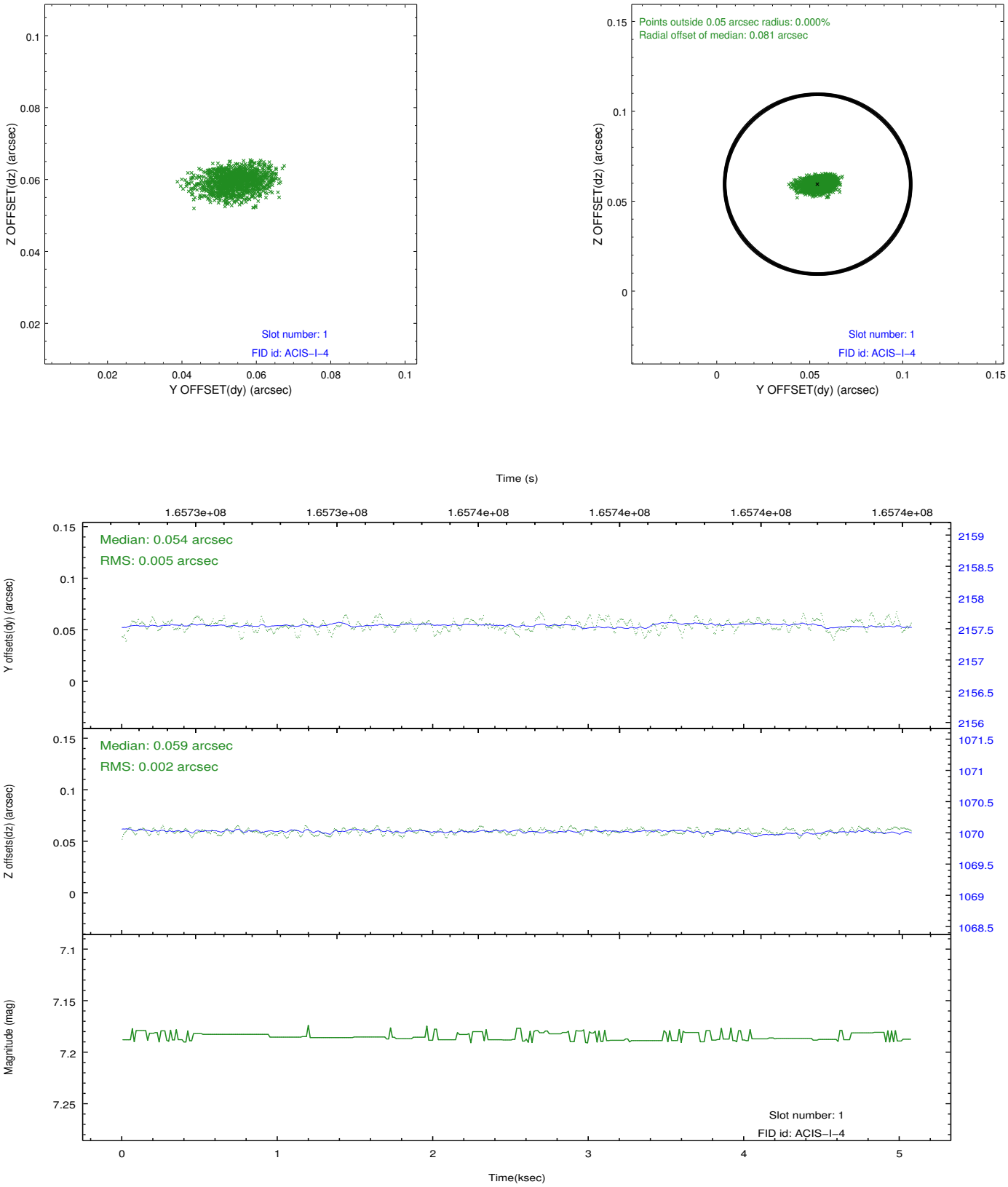


## 2.5 FID Slots

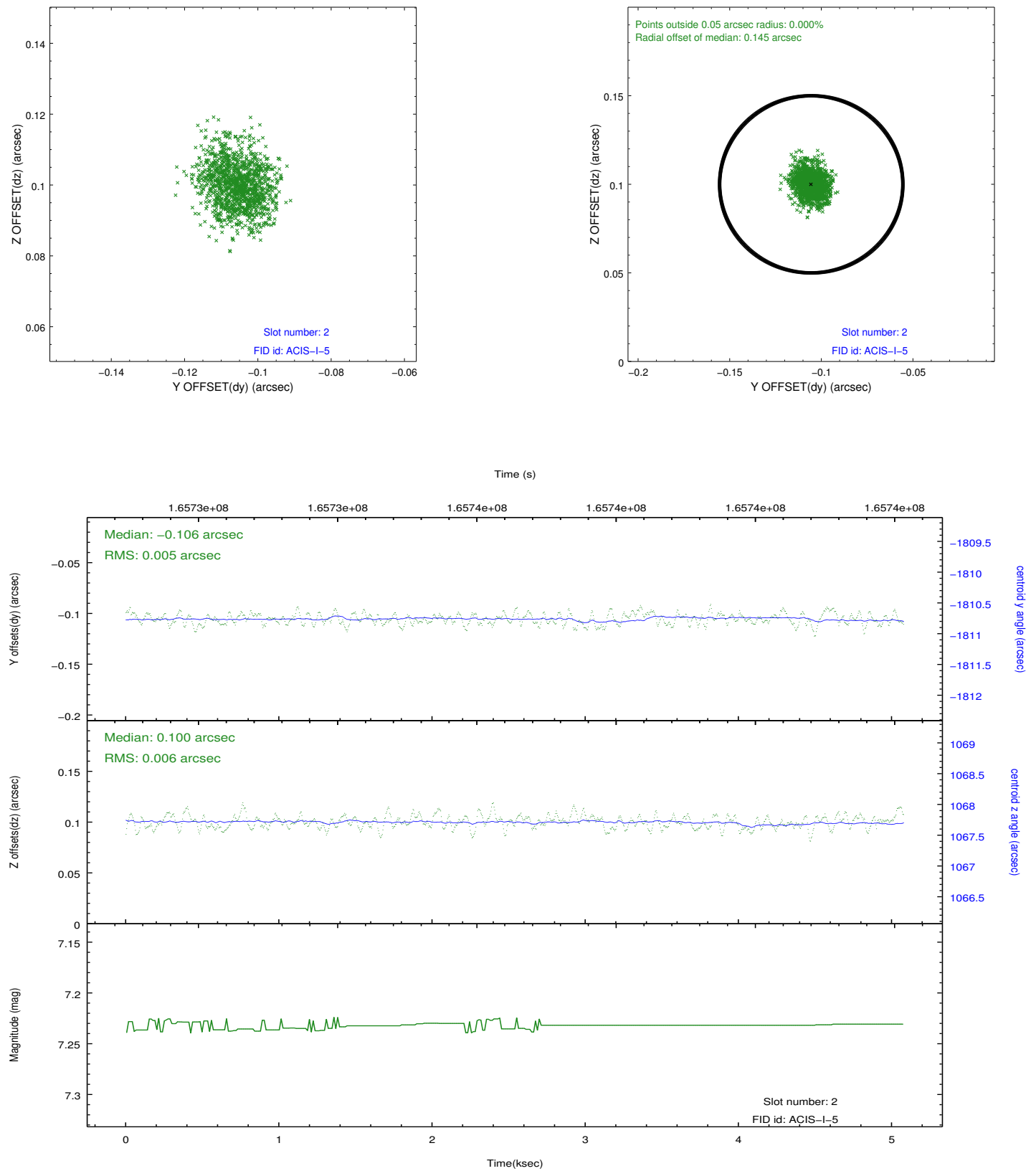
### 2.5.1 Slot 0



2.5.2 Slot 1



### 2.5.3 Slot 2



## **A Summary**

### **A.1 Status**

V&V Scientist	Jen Lauer
V&V Date (YYYY-MM-DD)	2012.11.13
V&V Edition	1
V&V Disposition and Status	OK
V&V Charge Time	4.674

### **A.2 Comments**