

V&V Reference Report

L2 ASCDS Version : 7.6.10

Observation 3169 - L2 Version 002
Chandra X-Ray Center

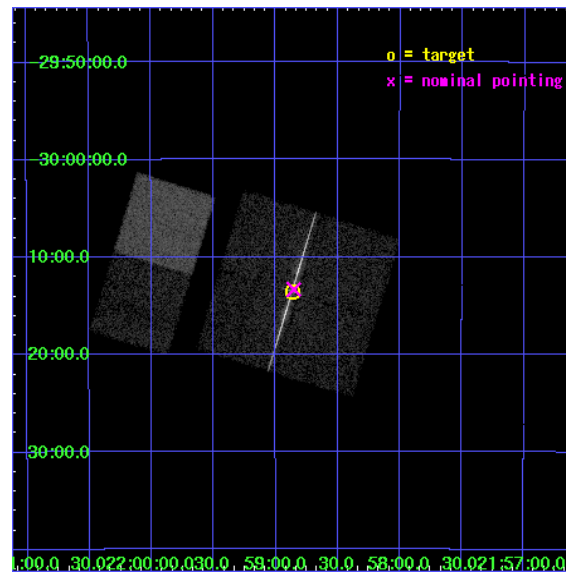
L2 Processing Date : Feb 28 2007

Contents

1	Front	2
2	OBI	3
2.1	OBI	3
2.1.1	Images	3
2.1.2	Bias	3
2.1.3	Parameters	4
2.1.4	Events	4
2.2	Compared Parameters	5
2.3	Aspect	6
2.4	Star Slots	9
2.4.1	Slot 3	9
2.4.2	Slot 4	10
2.4.3	Slot 5	11
2.4.4	Slot 6	12
2.4.5	Slot 7	13
2.5	FID Slots	14
2.5.1	Slot 0	14
2.5.2	Slot 1	15
2.5.3	Slot 2	16
3	Gratings	17
3.1	LETG Arm	17
A	Summary	19
A.1	Status	19
A.2	Comments	19

1 Front

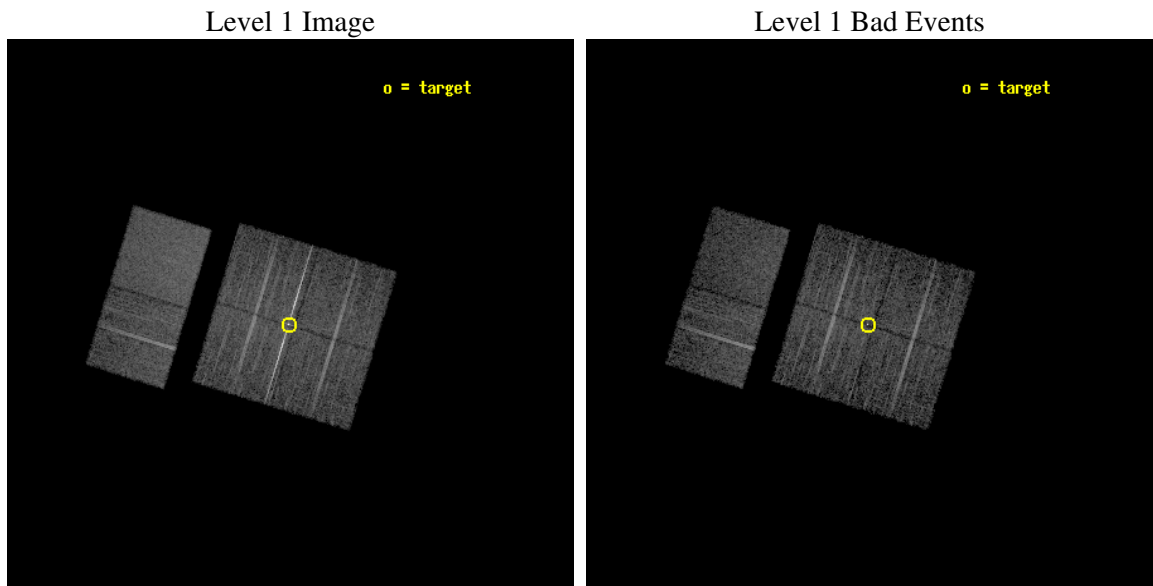
seq_num	790063
obs_id	3169
title	AO3 LETG/ACIS-I CALIBRATION OBSERVATIONS OF PKS2155-304
observer	Dr. CXC Calibration
object	PKS2155-304
dtcycle	0
cycle	P
ra_targ	329.716667
dec_targ	-30.225556
ra_nom	329.71327357408
dec_nom	-30.222296192977
roll_nom	287.06343916994
revision	4
ontime	7932.800007388
livetime	7832.3501171357
ontime0	7932.800007388
ontime1	7932.800007388
ontime2	7932.800007388
ontime3	7932.800007388
ontime6	7932.800007388
ontime7	7932.800007388
l2events	76082



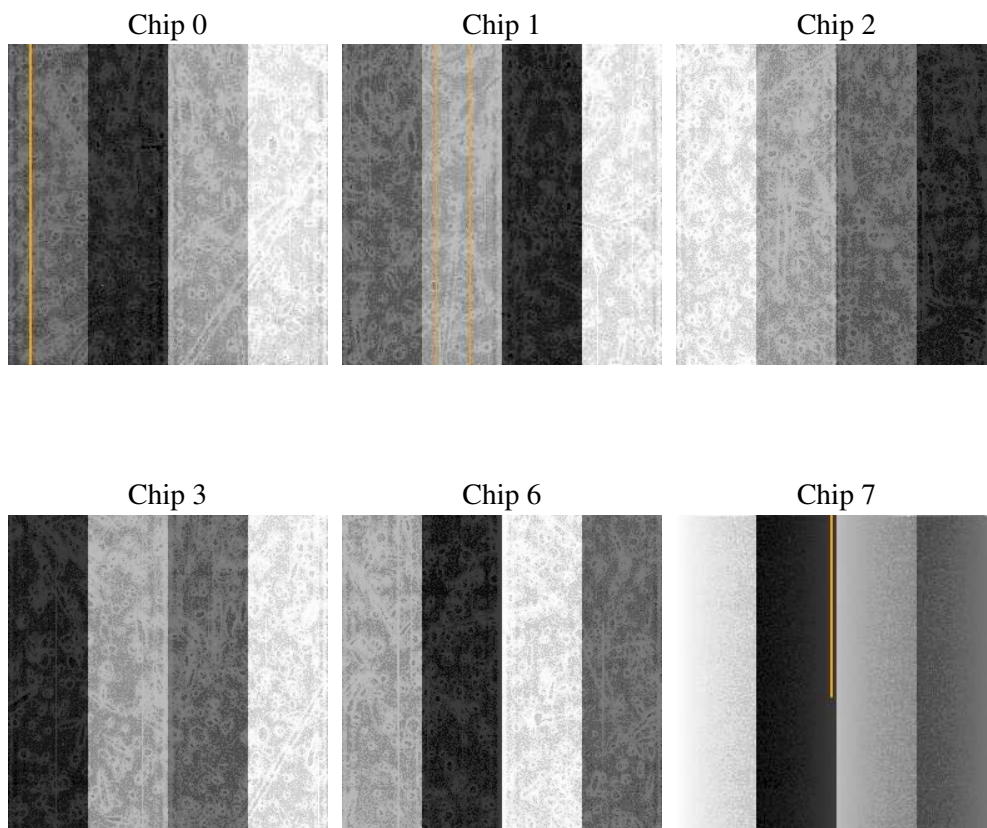
2 OBI

2.1 OBI

2.1.1 Images



2.1.2 Bias



2.1.3 Parameters

obi_num	1
ascdsver	7.6.10
caldbver	3.3.0
date	2007-01-20T09:44:41
revision	2

sched_exp_time	8000.000000
ontime	7932.800007388
ontime0	7932.800007388
ontime1	7932.800007388
ontime2	7932.800007388
ontime3	7932.800007388
ontime6	7932.800007388
ontime7	7932.800007388
llevents	334493

2.1.4 Events

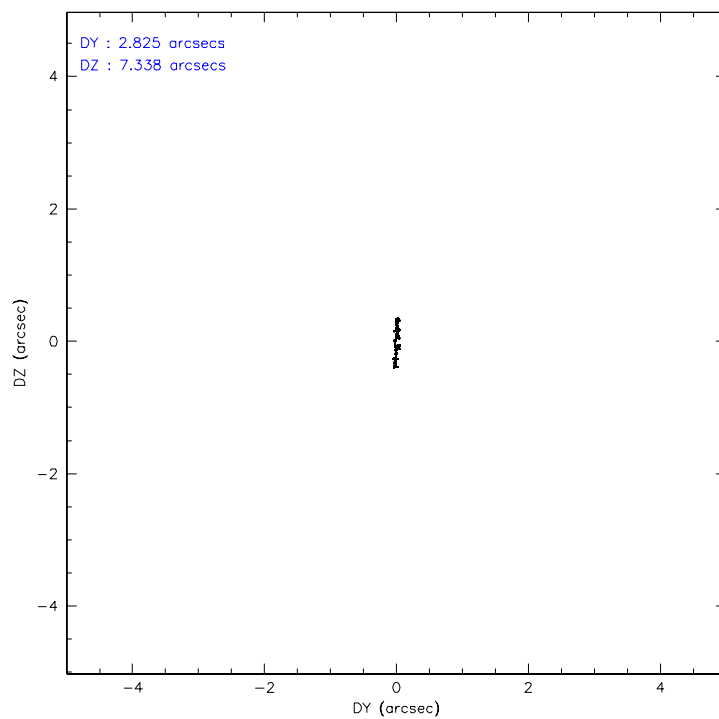
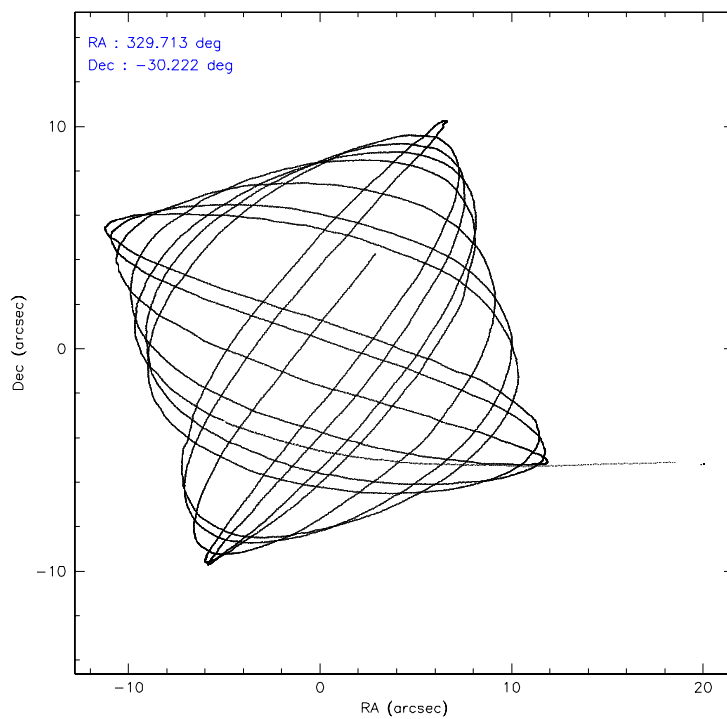
	ccd 0	ccd 1	ccd 2	ccd 3	ccd 6	ccd 7
level 1 events	45655	46571	64051	62597	51590	64029
rejected events	39010	39820	46823	44617	45137	37557
rejected %	85%	85%	73%	71%	87%	58%

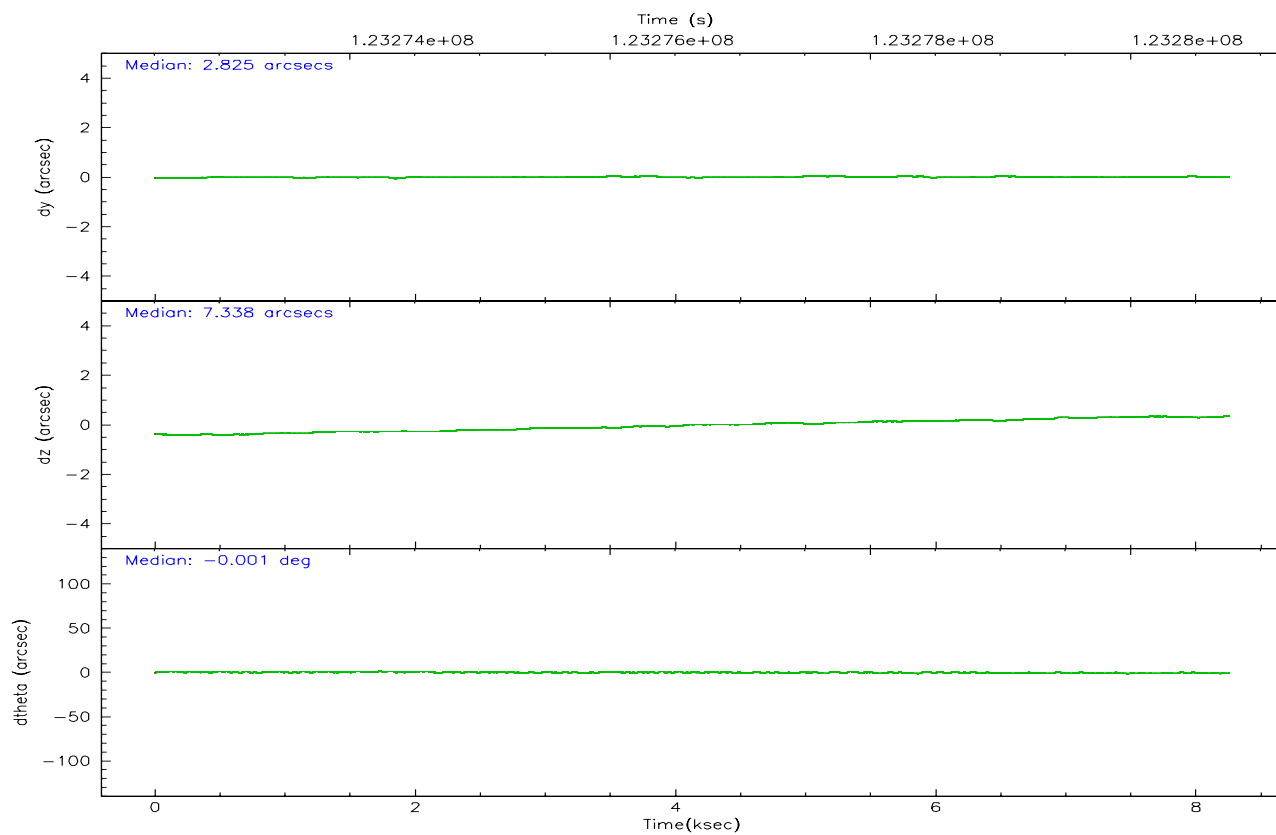
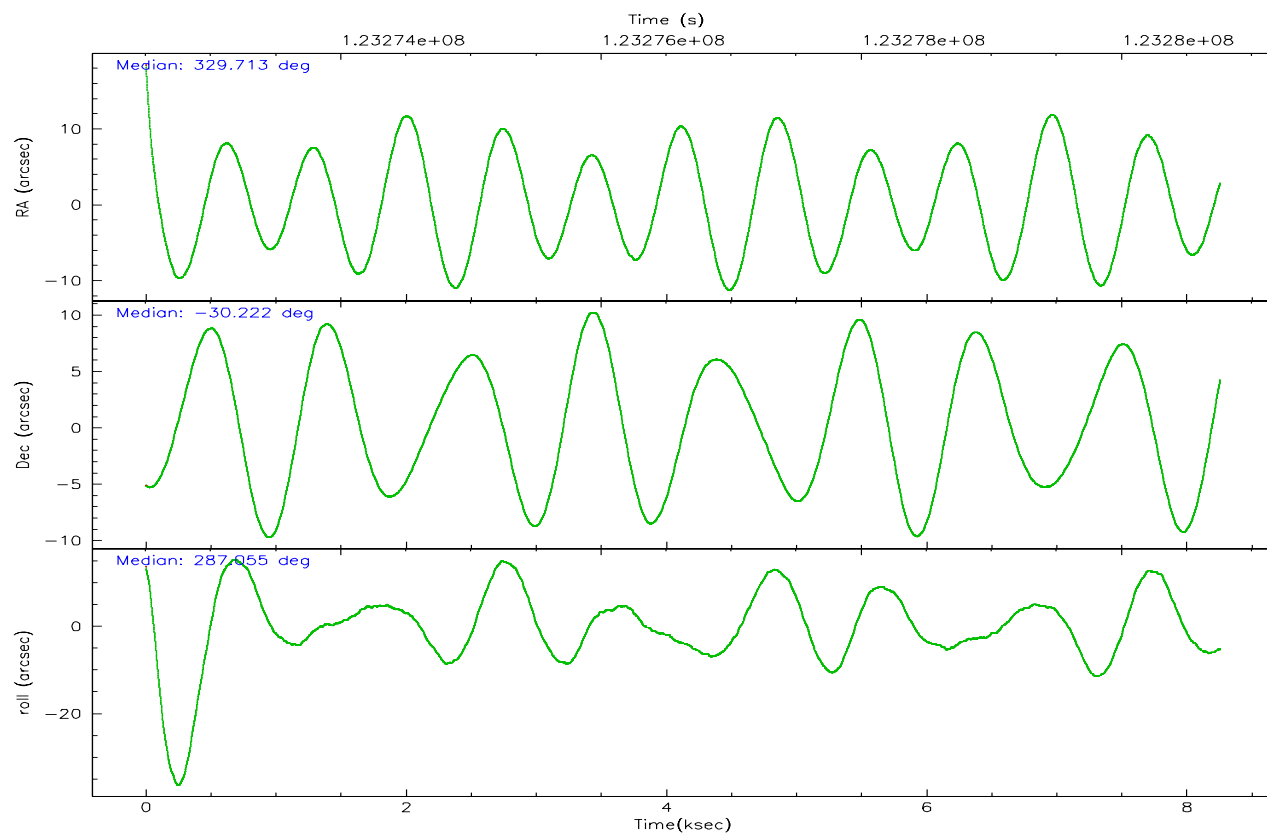
	ccd 0	ccd 1	ccd 2	ccd 3	ccd 6	ccd 7
grade 0 events	2879	2850	11852	12328	2504	2330
	6%	6%	18%	19%	4%	3%
grade 1 events	25	25	83	177	27	61
	0%	0%	0%	0%	0%	0%
grade 2 events	1469	1364	2437	2403	1444	5287
	3%	2%	3%	3%	2%	8%
grade 3 events	588	619	833	876	583	2402
	1%	1%	1%	1%	1%	3%
grade 4 events	575	625	825	891	604	2254
	1%	1%	1%	1%	1%	3%
grade 5 events	1875	1947	1815	2261	2179	6178
	4%	4%	2%	3%	4%	9%
grade 6 events	1145	1303	1290	1497	1322	14218
	2%	2%	2%	2%	2%	22%
grade 7 events	37099	37838	44916	42164	42927	31299
	81%	81%	70%	67%	83%	48%

2.2 Compared Parameters

Parameter	Planned	Actual	Parameter	Planned	Actual
Instrument	ACIS	ACIS	Obspar format version number	6	6
Detector	ACIS-012367	ACIS-012367	Obspar file type	PREDICTED	ACTUAL
Grating	LETG	LETG	Obspar update status	NONE	UPDATED
Data mode	FAINT	FAINT	Number of optional ACIS chips dropped	0	0
Observation mode	POINTING	POINTING	On-chip summing requested	N	N
Pointing RA	329.690039	329.7132735740812	Subarray requested	NONE	NONE
Pointing Dec	-30.203618	-30.22229619297713	Alternating exposures requested	N	N
Pointing Roll	286.843015	287.0634391699359	Primary exposure time	0.000000	3.2
Window start time	120960064.184000	120960064.184000			
Window stop time	126144064.184000	126144064.184000			
SIM focus pos (mm)	-0.782348	-0.7809083437167272			
SIM defocus (mm)	0	0.001439871863259334			
SIM translation stage pos (mm)	-233.592463	-233.5874344608287			
SIM translation stage offset (mm)	0	-0.005018542100998502			
Observation start time	123272761.184000	123271767.7683			
Observation start date	2001-11-27T18:24:57	2001-11-27T18:09:27			
Observation end time	123280761.184000	123280894.88117			
Observation end date	2001-11-27T20:38:17	2001-11-27T20:41:34			
Read mode	TIMED	TIMED			

2.3 Aspect



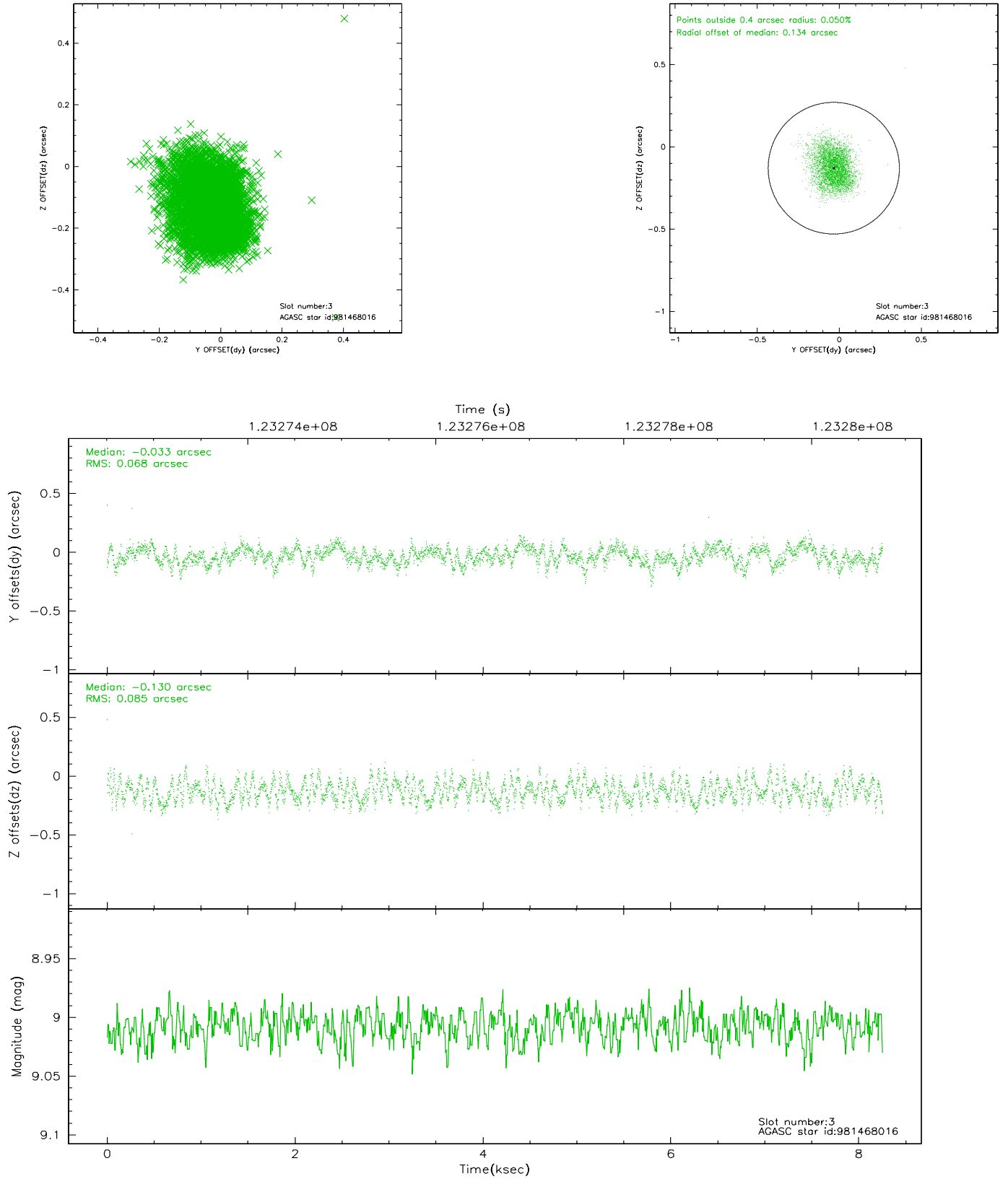


Slot Statistics

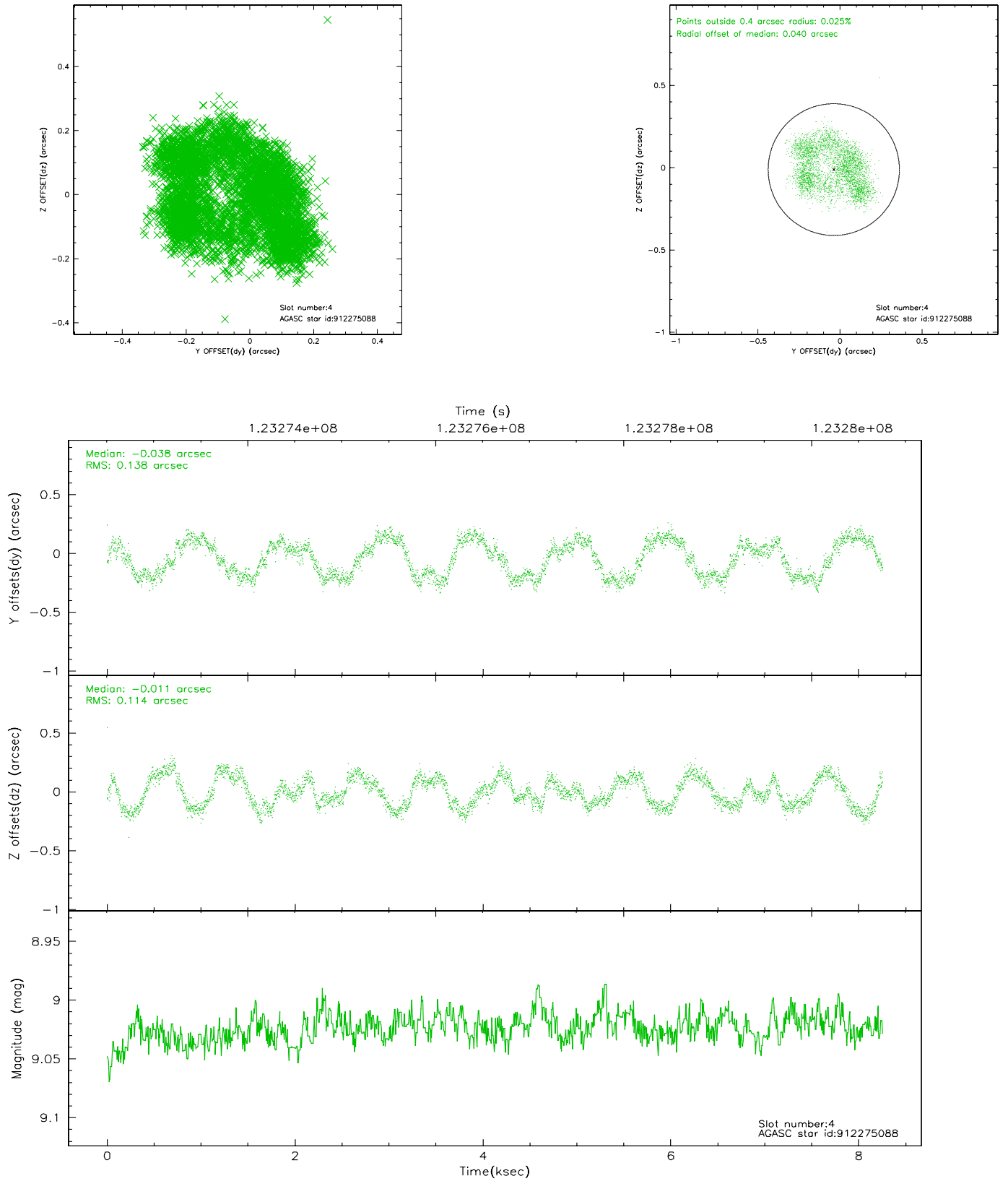
slot	status	id	mag	n_pts	med_dy	med_dz	dr1	dr2	ra	dec	mean_y	mean_z
0	FID	ACIS-I-1	7.24	2014	-0.025	0.058	0.011	0.018	0.000000	0.000000	936.93	-830.67
1	FID	ACIS-I-5	7.24	2014	-0.013	0.043	0.006	0.010	0.000000	0.000000	-1810.75	1066.52
2	FID	ACIS-I-6	7.26	2013	-0.052	-0.032	0.010	0.015	0.000000	0.000000	401.76	1711.67
3	GUIDE	981468016	9.01	4026	-0.033	-0.130	0.117	0.182	328.842457	-30.034984	-1336.46	-2355.01
4	GUIDE	912275088	9.02	4026	-0.038	-0.011	0.199	0.265	329.619228	-29.738698	-1666.10	272.76
5	GUIDE	981478152	9.41	4022	-0.022	0.133	0.086	0.140	329.415589	-30.057192	-751.36	-665.46
6	GUIDE	981468128	9.37	4026	0.064	-0.026	0.102	0.173	329.756350	-30.158334	-95.98	245.09
7	GUIDE	981469488	9.61	4027	0.038	0.027	0.125	0.186	329.261199	-30.045155	-930.34	-1114.04

2.4 Star Slots

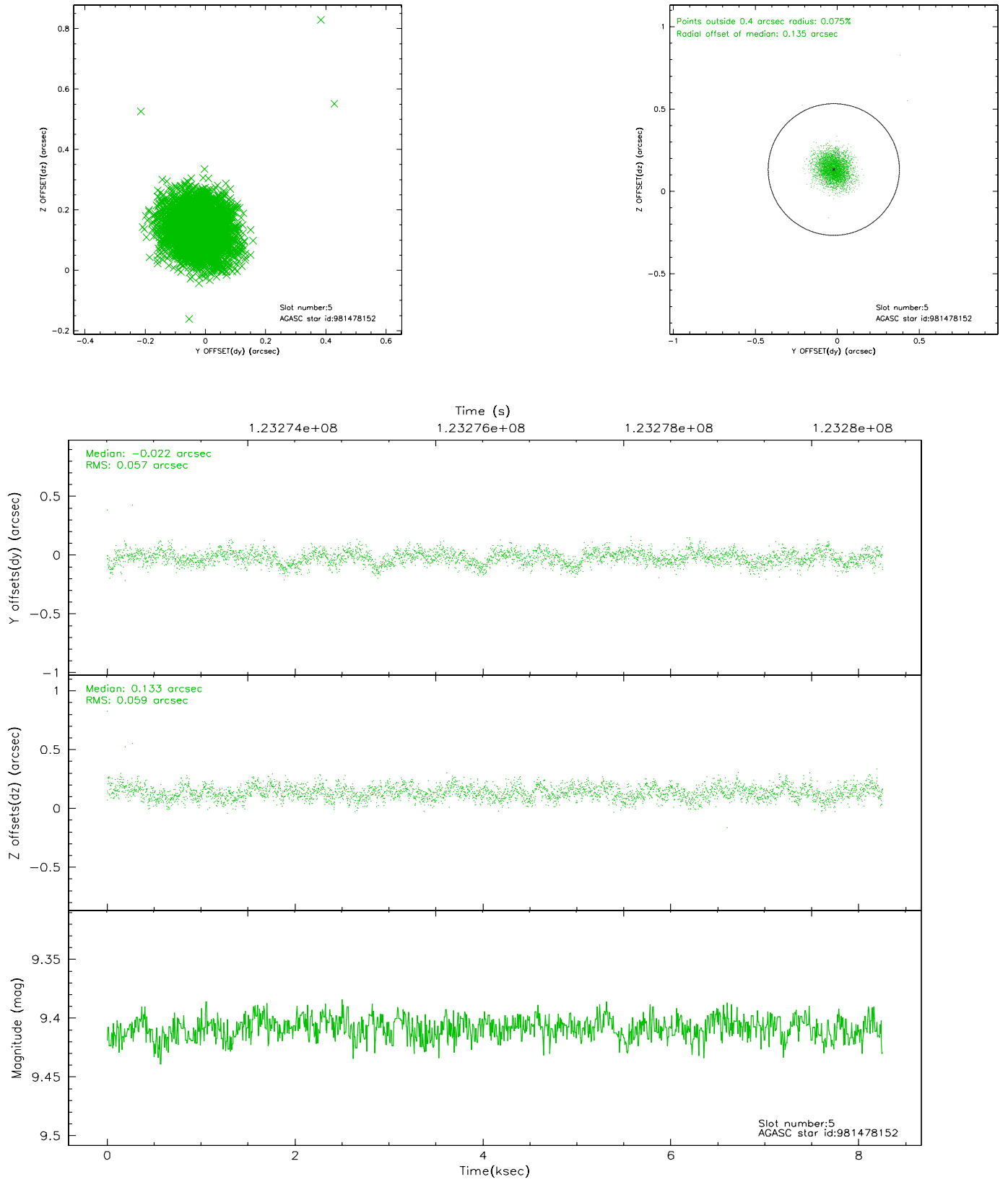
2.4.1 Slot 3



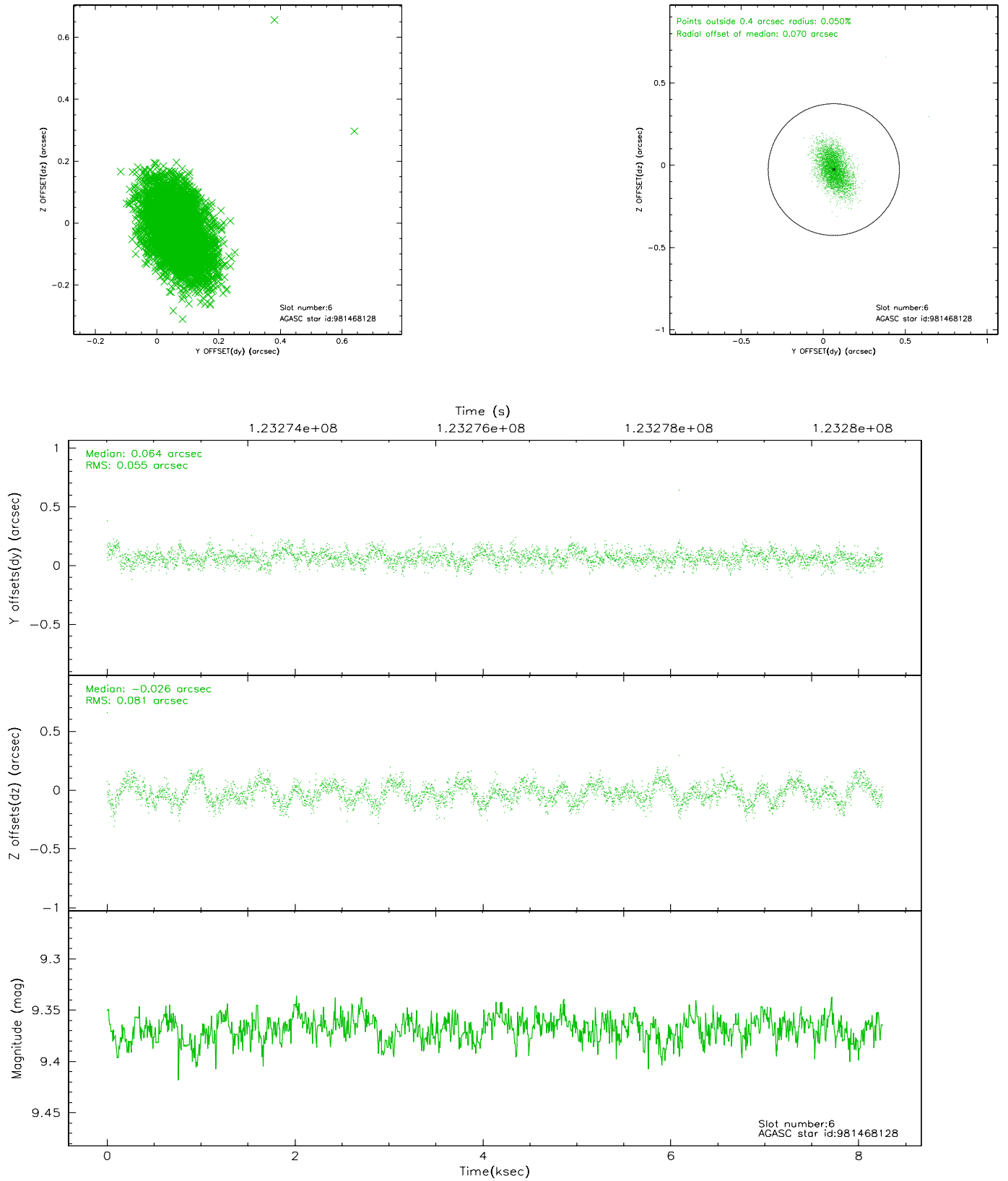
2.4.2 Slot 4



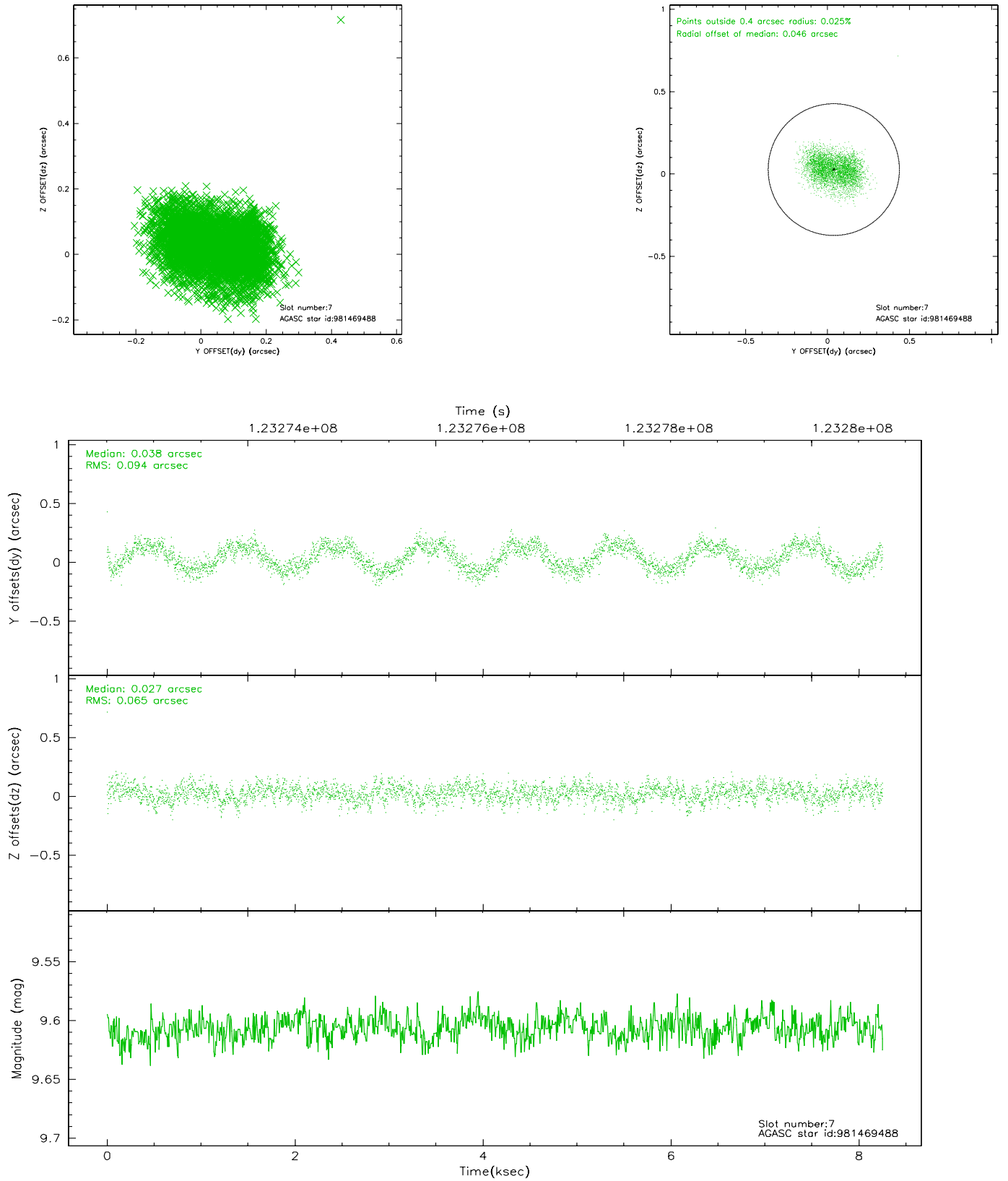
2.4.3 Slot 5



2.4.4 Slot 6

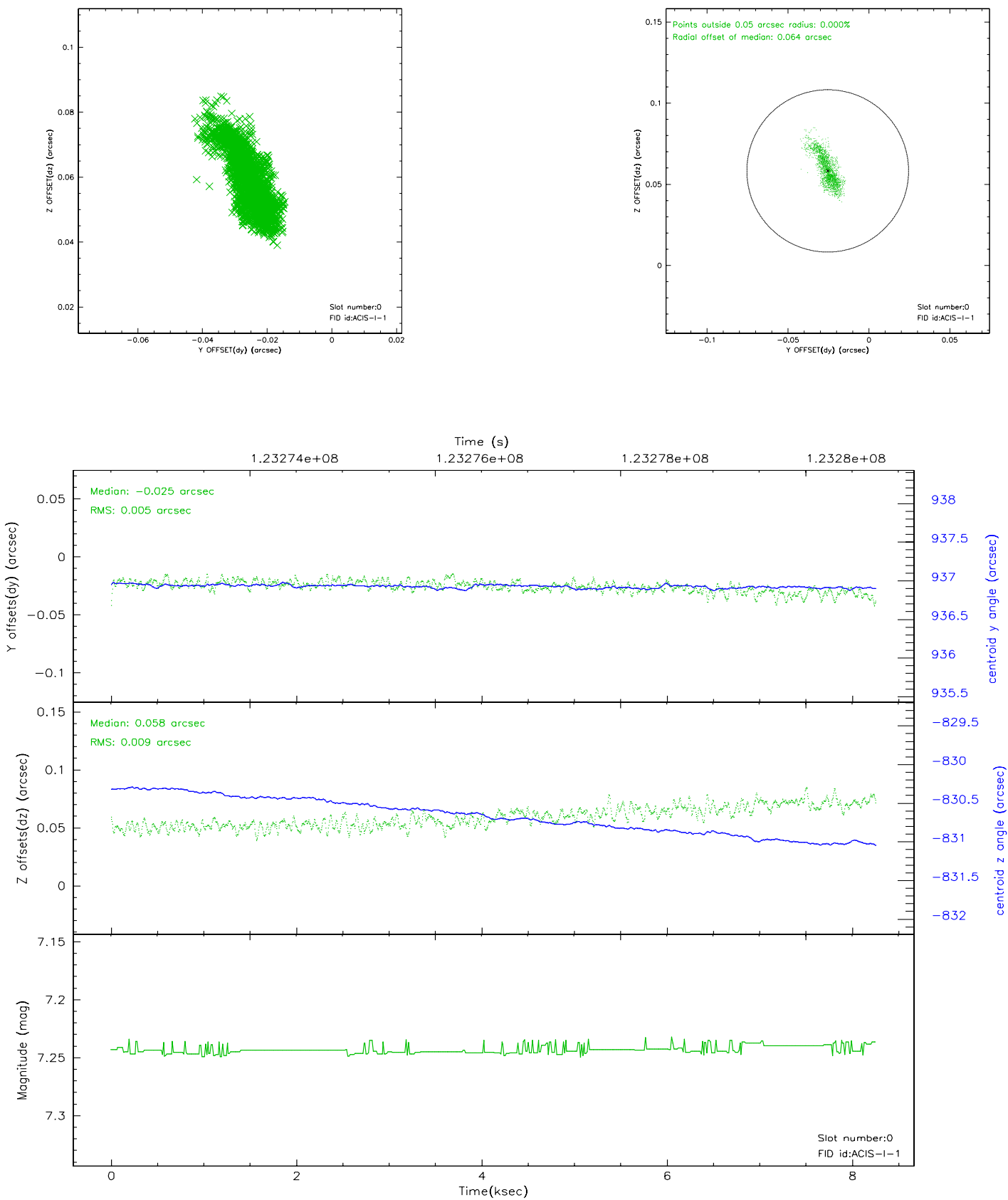


2.4.5 Slot 7

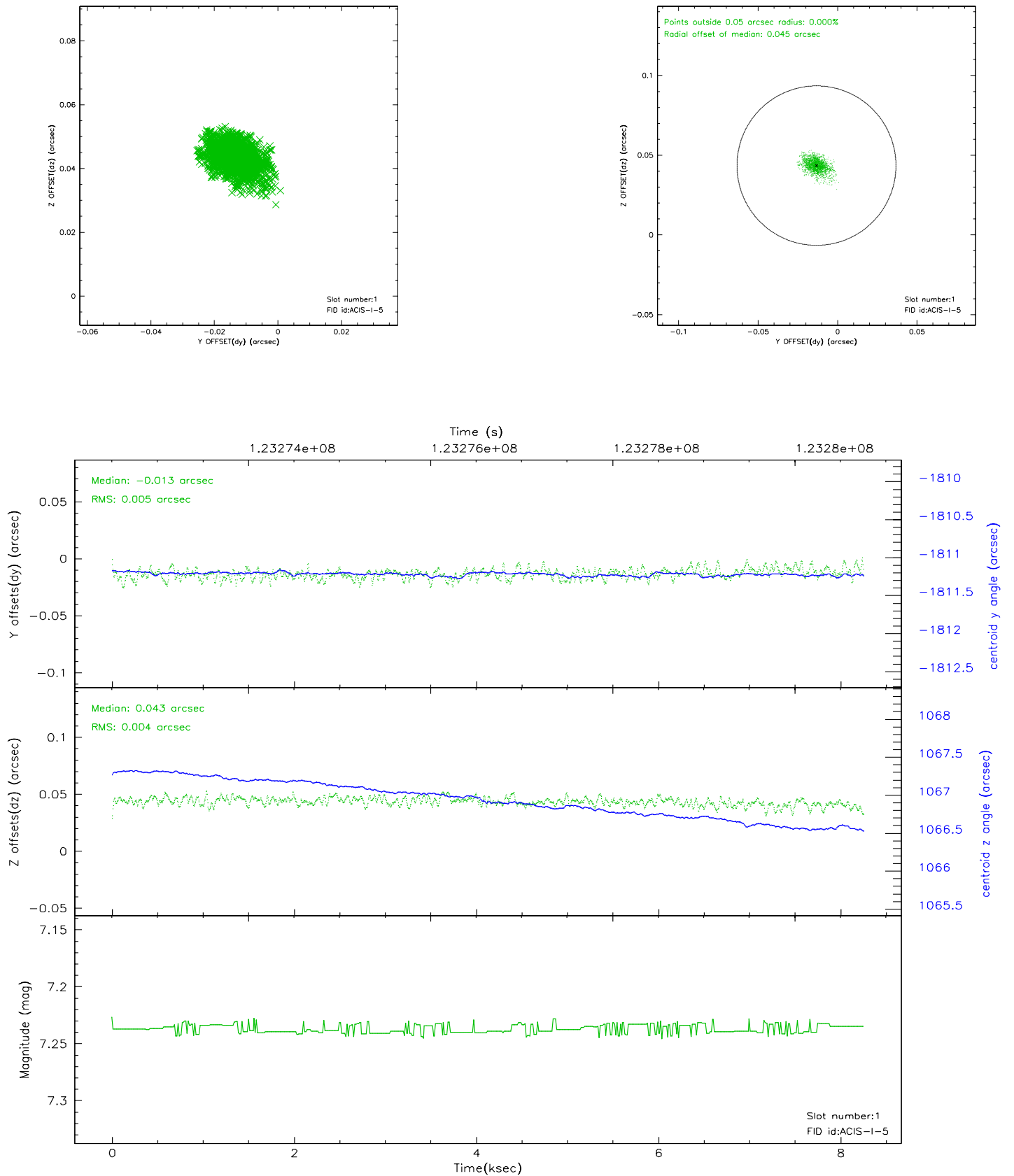


2.5 FID Slots

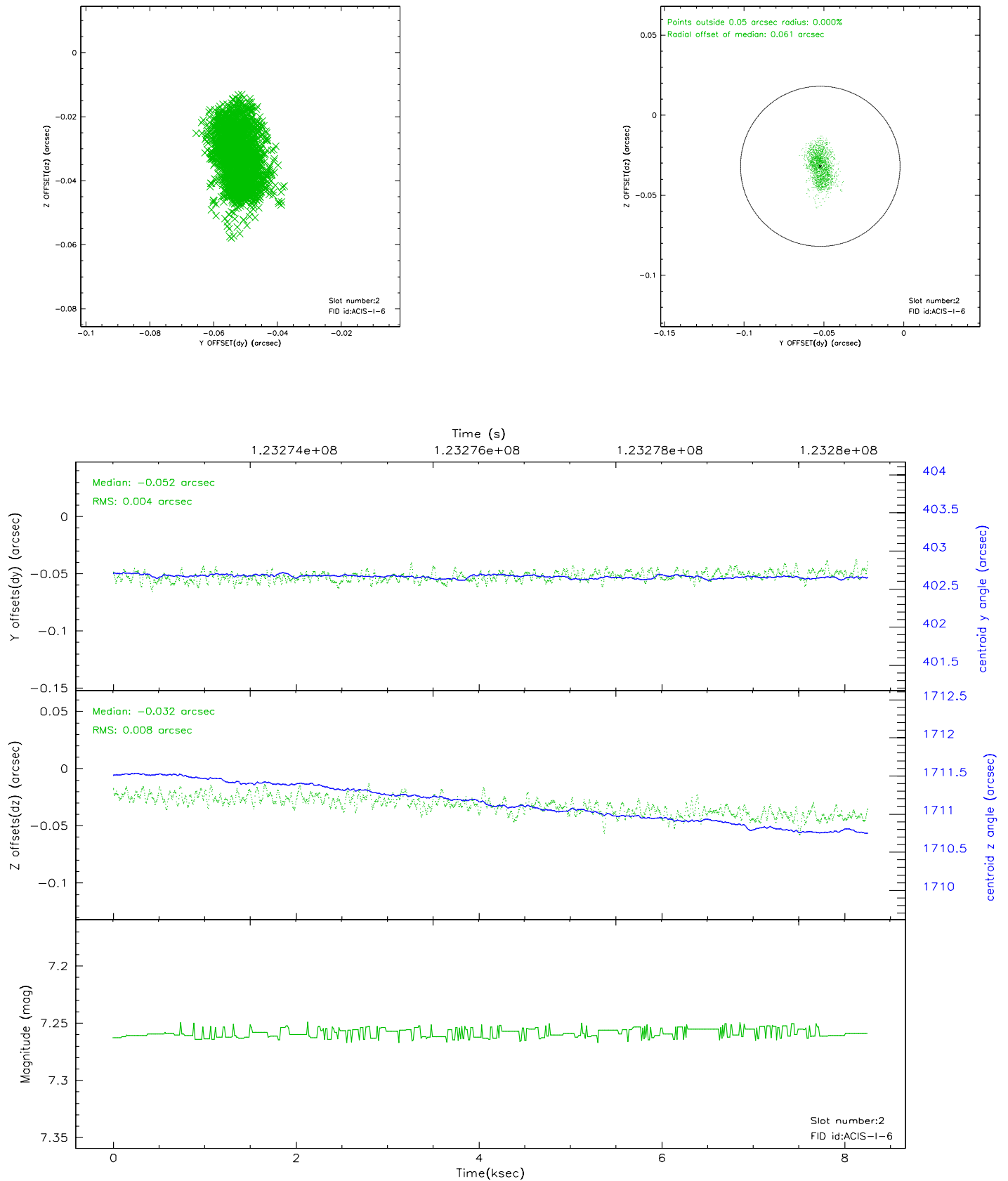
2.5.1 Slot 0



2.5.2 Slot 1

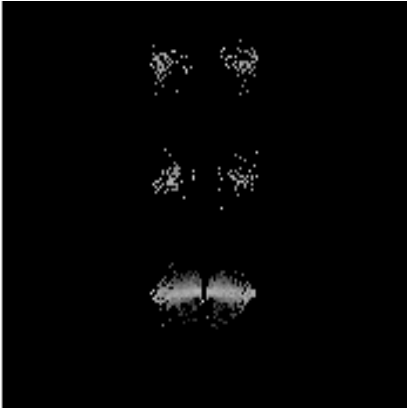


2.5.3 Slot 2

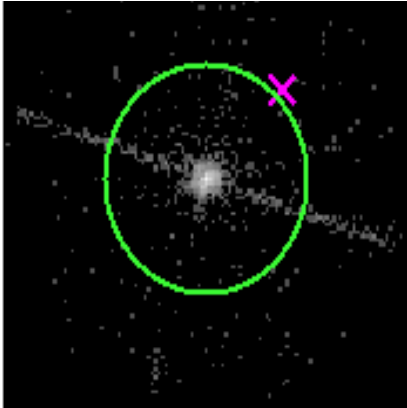


3 Gratings

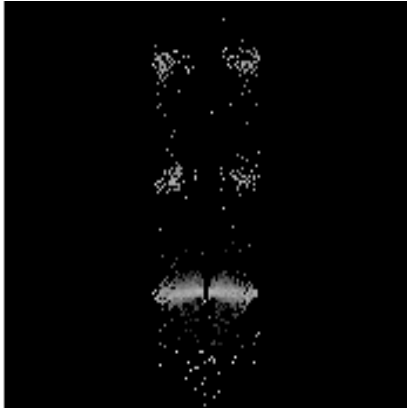
3.1 LETG Arm



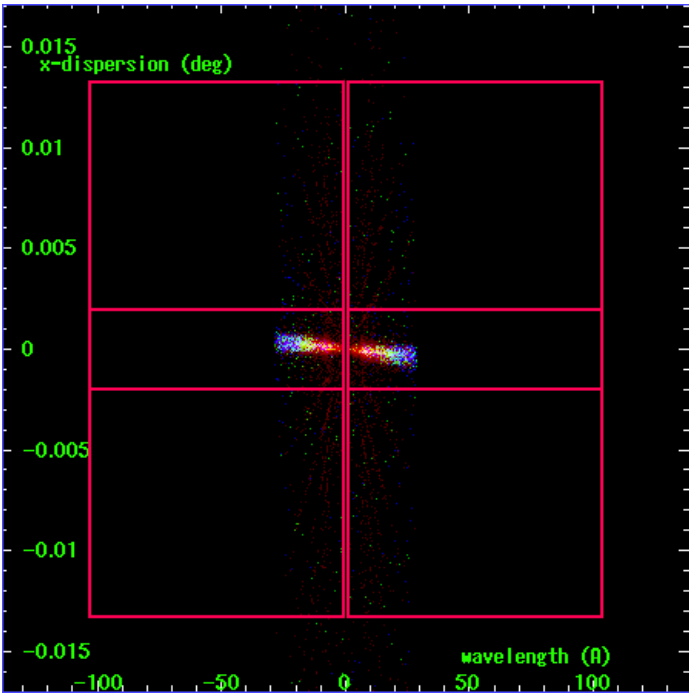
LETG Order Sort 123



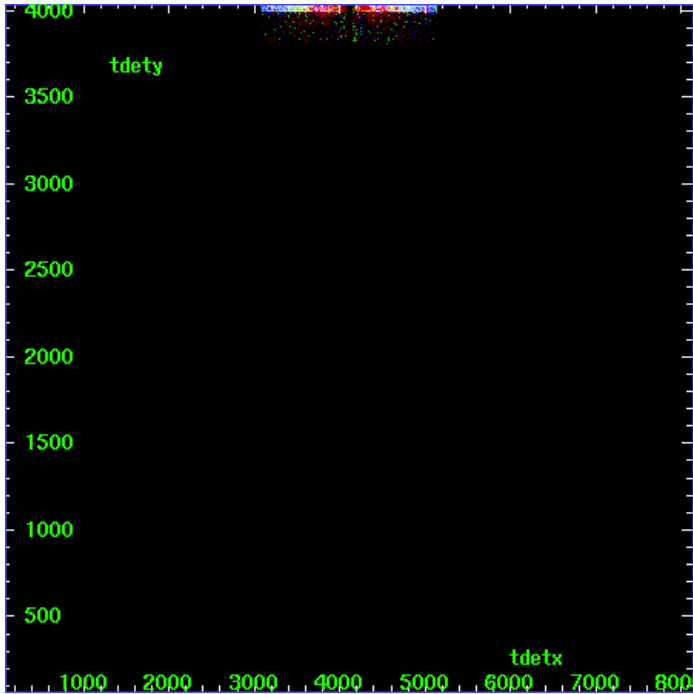
LETG Zero Order



LETG Order Sort ALL

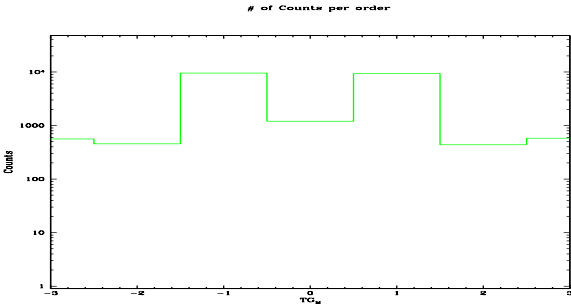


Spot Image LETG

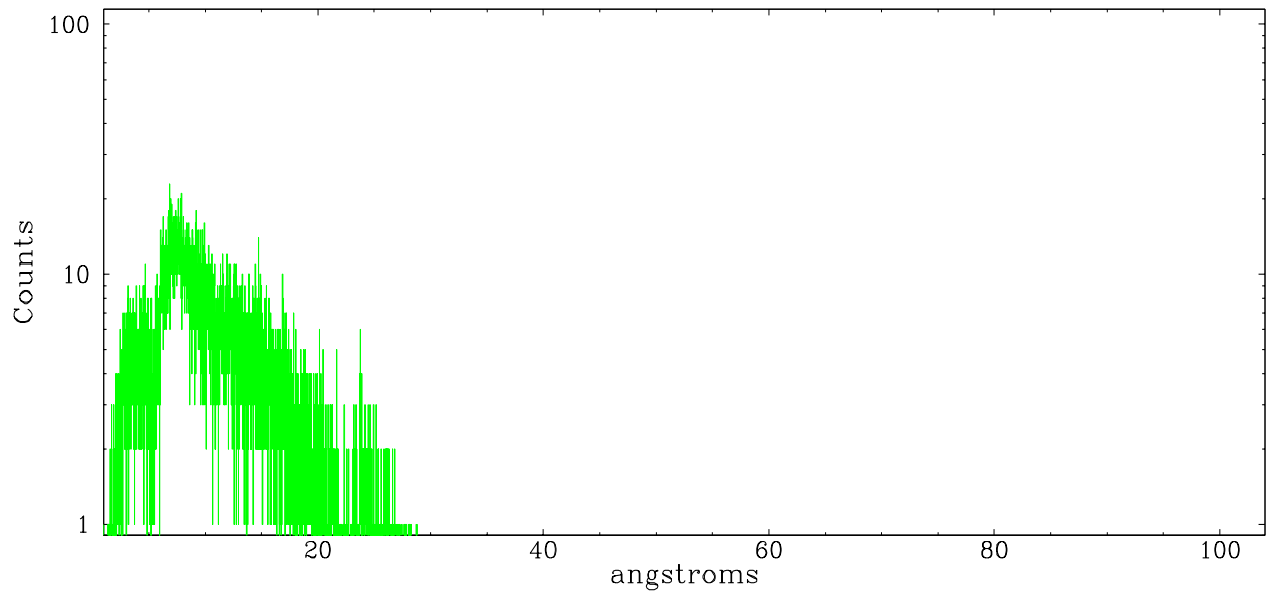


Full Detector LETG

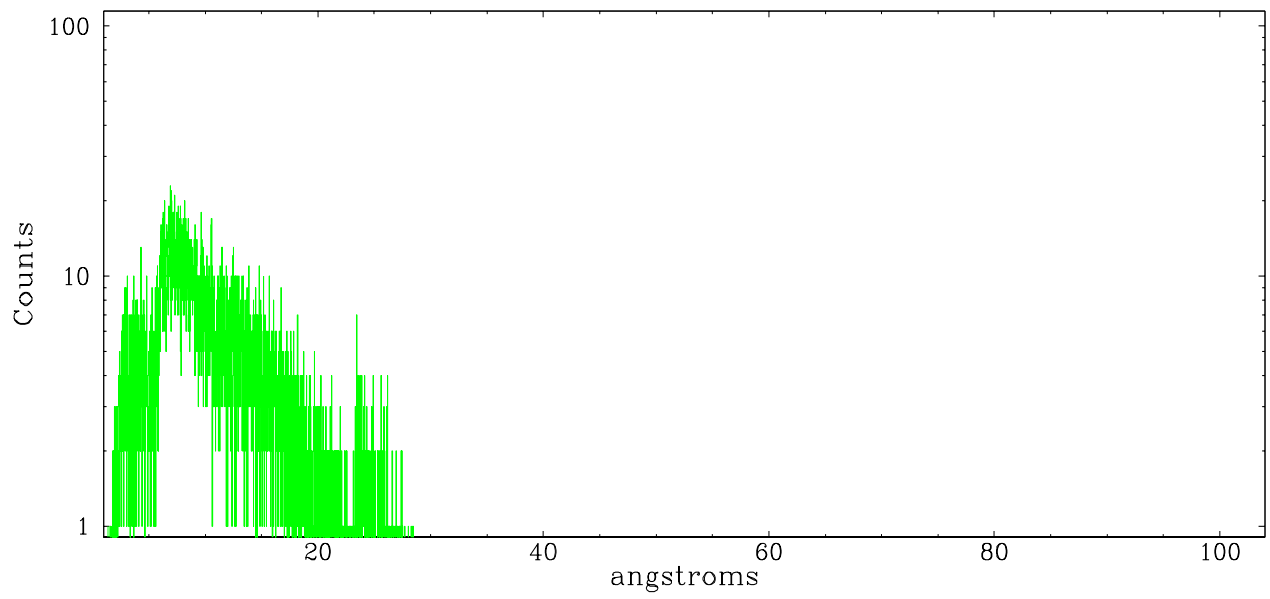
	order -3	order -2	order -1	order 0	order 1	order 2	order 3
Events	562	455	9529	1200	9285	438	581



leg order -1



leg order +1



A Summary

A.1 Status

V&V Scientist	David Huenemoerder
V&V Date (YYYY-MM-DD)	2007.03.02
V&V Edition	1
V&V Disposition and Status	OK
V&V Charge Time	7.936

A.2 Comments

Non-standard grating/detector configuration required use of `osip=NONE` in `tg_resolve_events`, since there is no order-sorting table for ACIS-I.