

V&V Reference Report

L2 ASCDS Version : 7.6.8.1

Observation 3099 - L2 Version 001
Chandra X-Ray Center

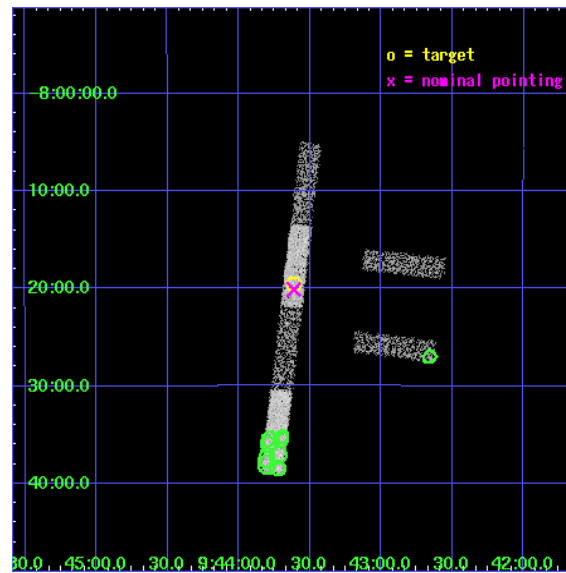
L2 Processing Date : Sep 8 2006

Contents

1	Front	2
2	OBI	3
2.1	OBI	3
2.1.1	Images	3
2.1.2	Bias	3
2.1.3	Parameters	4
2.1.4	Events	4
2.2	Compared Parameters	5
2.3	Aspect	6
2.4	Star Slots	9
2.4.1	Slot 3	9
2.4.2	Slot 4	10
2.4.3	Slot 5	11
2.4.4	Slot 6	12
2.4.5	Slot 7	13
2.5	FID Slots	14
2.5.1	Slot 0	14
2.5.2	Slot 1	15
2.5.3	Slot 2	16
3	Point Sources	17
A	Summary	18
A.1	Status	18
A.2	Comments	18

1 Front

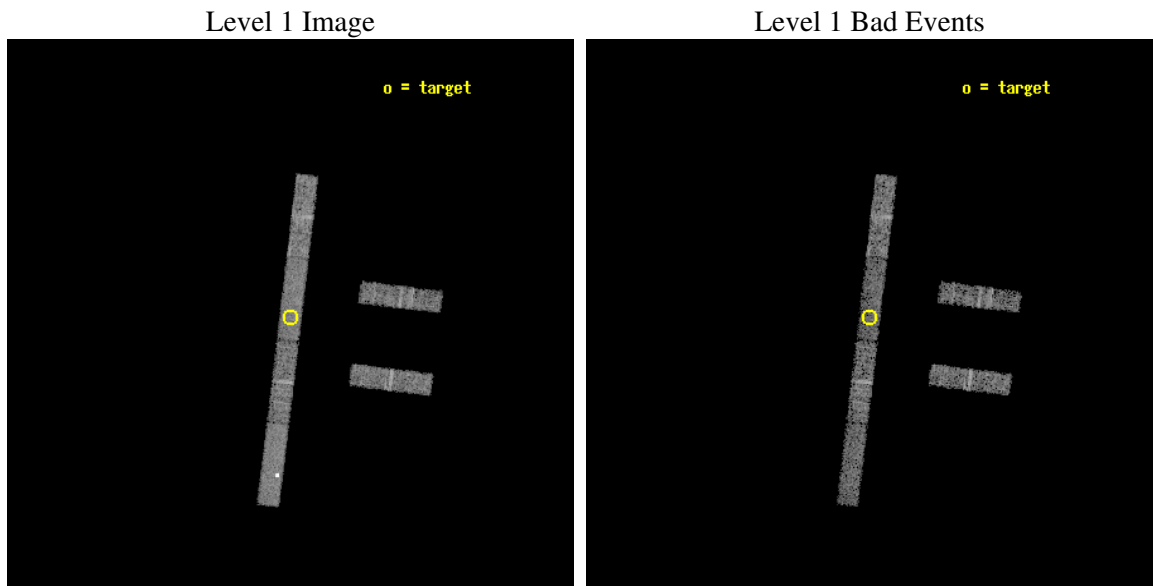
seq_num	700538
obs_id	3099
title	X-RAY IMAGING OF GPS AND CSS QUASARS
observer	Dr Aneta Siemiginowska
object	Q0941-080
dtcycle	0
cycle	P
ra_targ	145.90375
dec_targ	-8.325278
ra_nom	145.90320564124
dec_nom	-8.3349993022578
roll_nom	276.86391791047
revision	2
ontime	5551.6999699175
livetime	5352.0209343312
ontime2	5551.6999699175
ontime3	5551.6999699175
ontime5	5551.6999699175
ontime6	5551.6999699175
ontime7	5551.6999699175
ontime8	5551.6999699175
l2events	13629



2 OBI

2.1 OBI

2.1.1 Images



2.1.2 Bias

Chip 2

Chip 3

Chip 5



Chip 6

Chip 7

Chip 8



2.1.3 Parameters

obi_num	0
ascdsver	7.6.8.1
caldsver	3.2.3
date	2006-09-08T10:31:43
revision	2

sched_exp_time	5000.000000
ontime	5553.3847451508
ontime2	5553.3847451508
ontime3	5553.3847451508
ontime5	5553.3847451508
ontime6	5553.3847451508
ontime7	5553.3847451508
ontime8	5553.3847451508
l1events	69788

2.1.4 Events

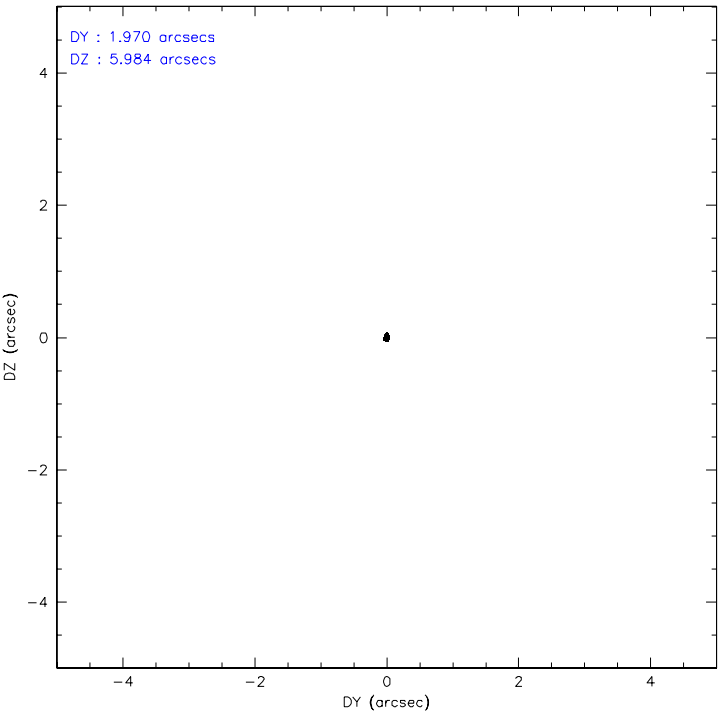
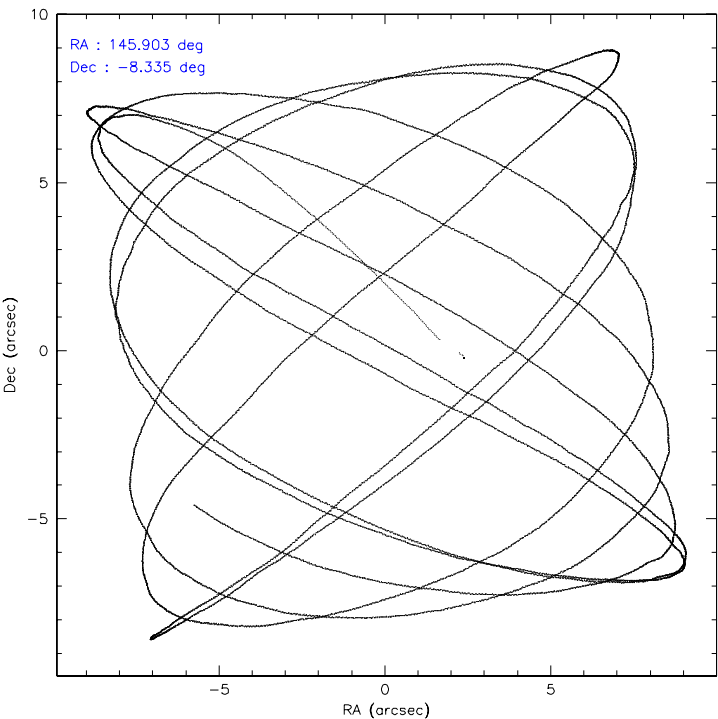
	ccd 2	ccd 3	ccd 5	ccd 6	ccd 7	ccd 8
level 1 events	10632	9536	14840	10367	11522	12891
rejected events	9521	8453	6812	9246	6843	10576
rejected %	89%	88%	45%	89%	59%	82%

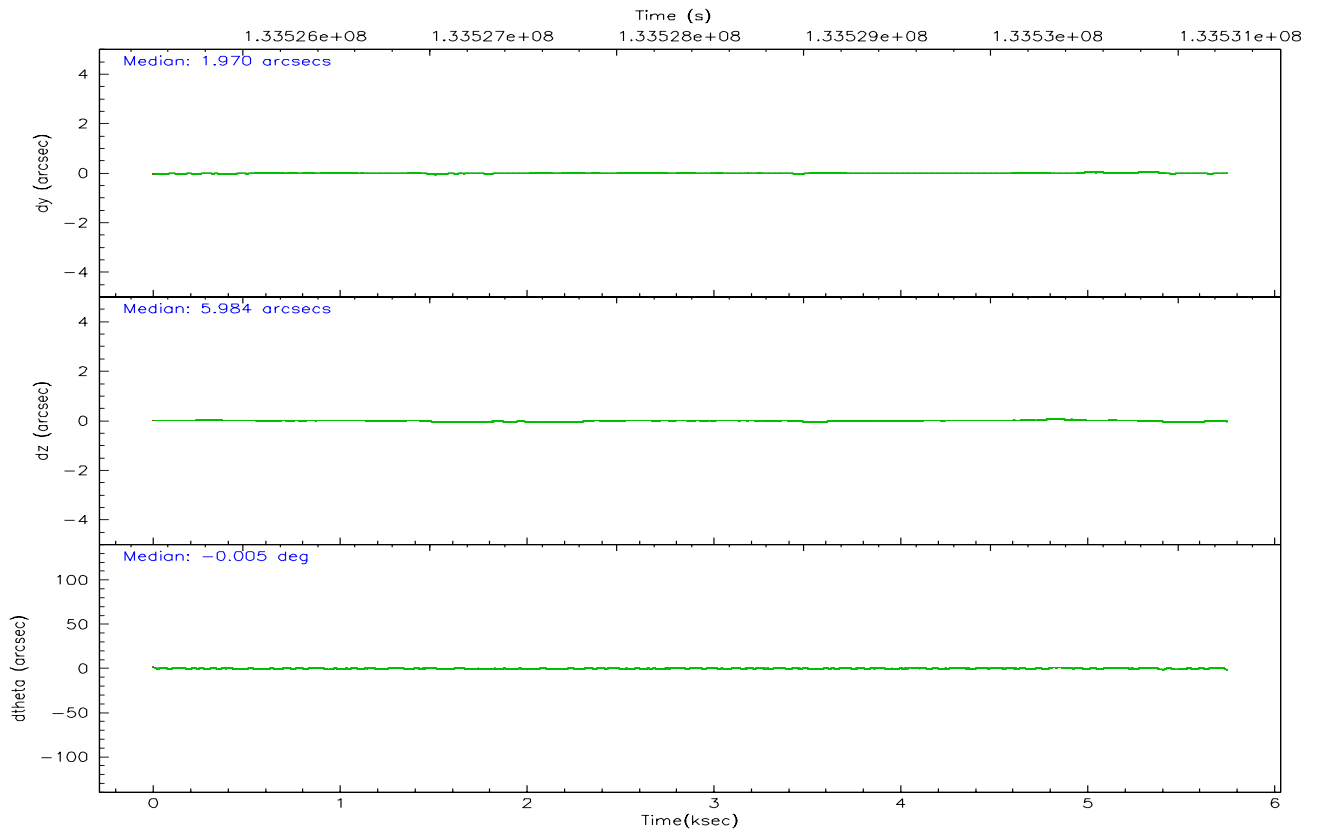
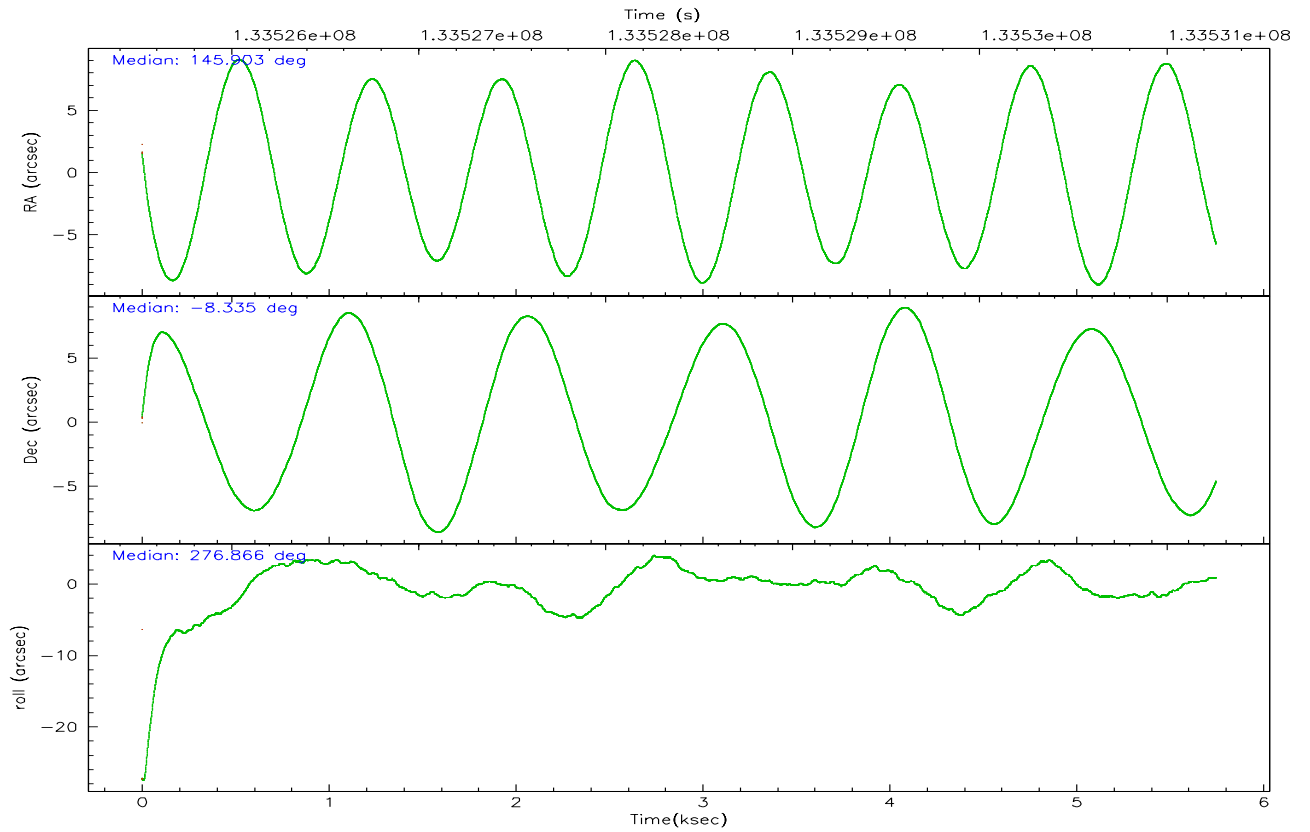
	ccd 2	ccd 3	ccd 5	ccd 6	ccd 7	ccd 8
grade 0 events	431	399	2796	387	335	726
	4%	4%	18%	3%	2%	5%
grade 1 events	5	6	10	3	12	5
	0%	0%	0%	0%	0%	0%
grade 2 events	204	191	1693	220	1123	419
	1%	2%	11%	2%	9%	3%
grade 3 events	152	148	192	151	330	274
	1%	1%	1%	1%	2%	2%
grade 4 events	148	130	200	162	330	278
	1%	1%	1%	1%	2%	2%
grade 5 events	371	345	625	382	839	493
	3%	3%	4%	3%	7%	3%
grade 6 events	176	216	3148	201	2561	618
	1%	2%	21%	1%	22%	4%
grade 7 events	9145	8101	6176	8861	5992	10078
	86%	84%	41%	85%	52%	78%

2.2 Compared Parameters

Parameter	Planned	Actual	Parameter	Planned	Actual
Instrument	ACIS	ACIS	Obspar format version number	6	6
Detector	ACIS-235678	ACIS-235678	Obspar file type	PREDICTED	ACTUAL
Grating	NONE	NONE	Obspar update status	NONE	UPDATED
Data mode	FAINT	FAINT	On-chip summing requested	N	N
Observation mode	POINTING	POINTING	Subarray requested	1/4	1/4
Pointing RA	145.886397	145.9032056412366	Subarray start row	0	385
Pointing Dec	-8.313367	-8.334999302257801	Subarray row count	1024	256
Pointing Roll	276.704887	276.8639179104723	Alternating exposures requested	N	N
SIM focus pos (mm)	-0.684267	-0.6828225247311905	Primary exposure time	0.000000	1.1
SIM defocus (mm)	0	0.001444936568705701			
SIM translation stage pos (mm)	-190.132523	-190.1400660498719			
SIM translation stage offset (mm)	0	0.00754346686406393			
Observation start time	133526266.184000	133525027.16873			
Observation start date	2002-03-26T10:36:42	2002-03-26T10:17:07			
Observation end time	133531266.184000	133532101.20651			
Observation end date	2002-03-26T12:00:02	2002-03-26T12:15:01			
Read mode	TIMED	TIMED			

2.3 Aspect



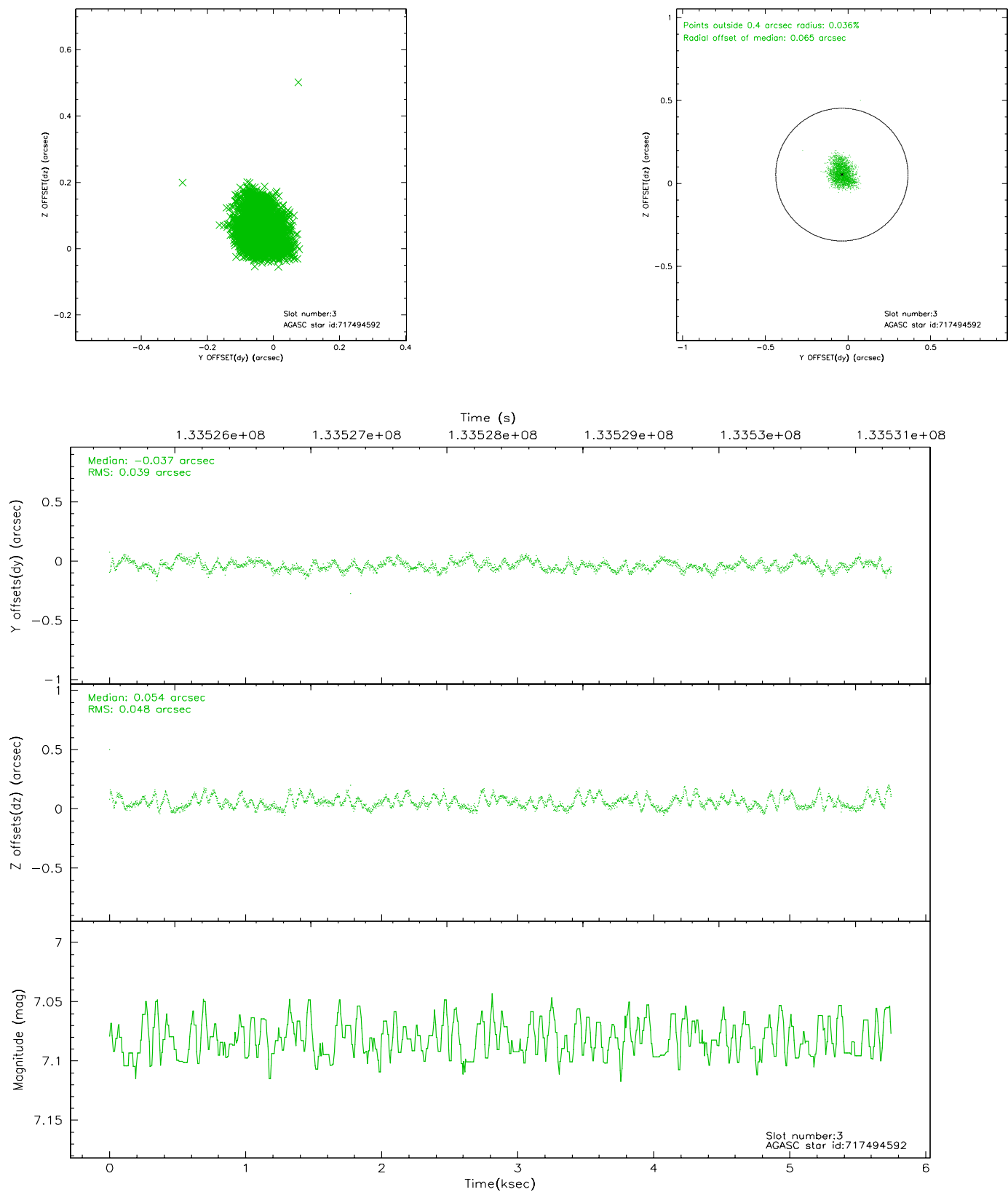


Slot Statistics

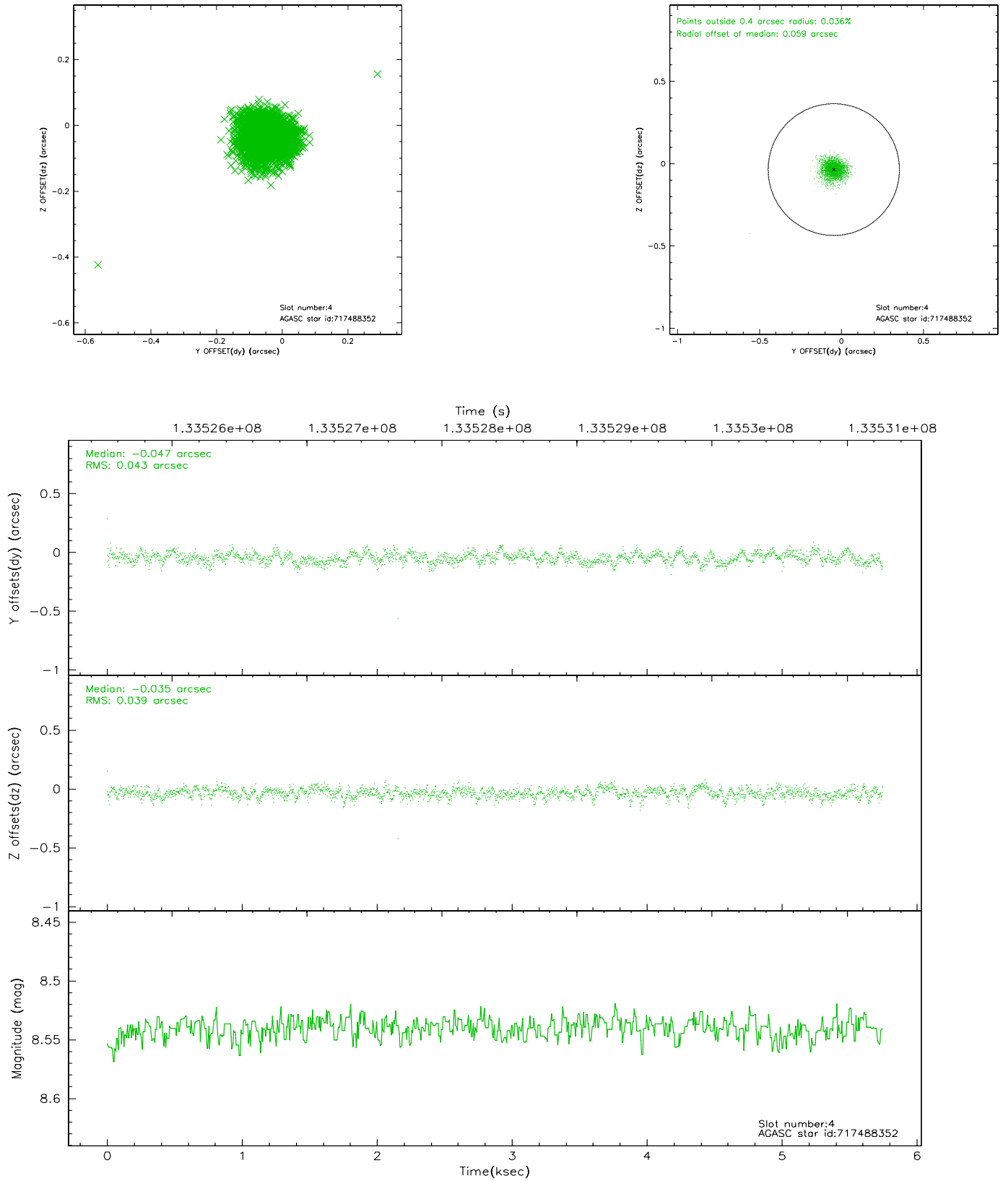
slot	status	id	mag	n_pts	med_dy	med_dz	dr1	dr2	ra	dec	mean_y	mean_z
0	FID	ACIS-S-2	7.12	1403	-0.039	0.026	0.007	0.011	0.000000	0.000000	-754.58	-1727.11
1	FID	ACIS-S-4	7.20	1403	-0.057	0.012	0.005	0.009	0.000000	0.000000	2158.17	180.35
2	FID	ACIS-S-5	7.24	1403	0.065	-0.029	0.006	0.010	0.000000	0.000000	-1806.02	175.07
3	GUIDE	717494592	7.08	2804	-0.037	0.054	0.066	0.102	146.355415	-8.482527	801.01	1587.74
4	GUIDE	717488352	8.54	2802	-0.047	-0.035	0.060	0.099	145.550658	-7.770537	-2079.42	-960.81
5	GUIDE	717490496	8.92	2804	-0.050	0.061	0.070	0.114	146.301171	-7.943760	-1148.69	1624.14
6	GUIDE	717491696	9.21	2804	0.015	-0.015	0.089	0.143	145.581622	-7.884038	-1661.77	-898.14
7	GUIDE	717493240	9.46	2801	0.118	-0.072	0.076	0.125	146.060175	-8.796570	1799.65	410.82

2.4 Star Slots

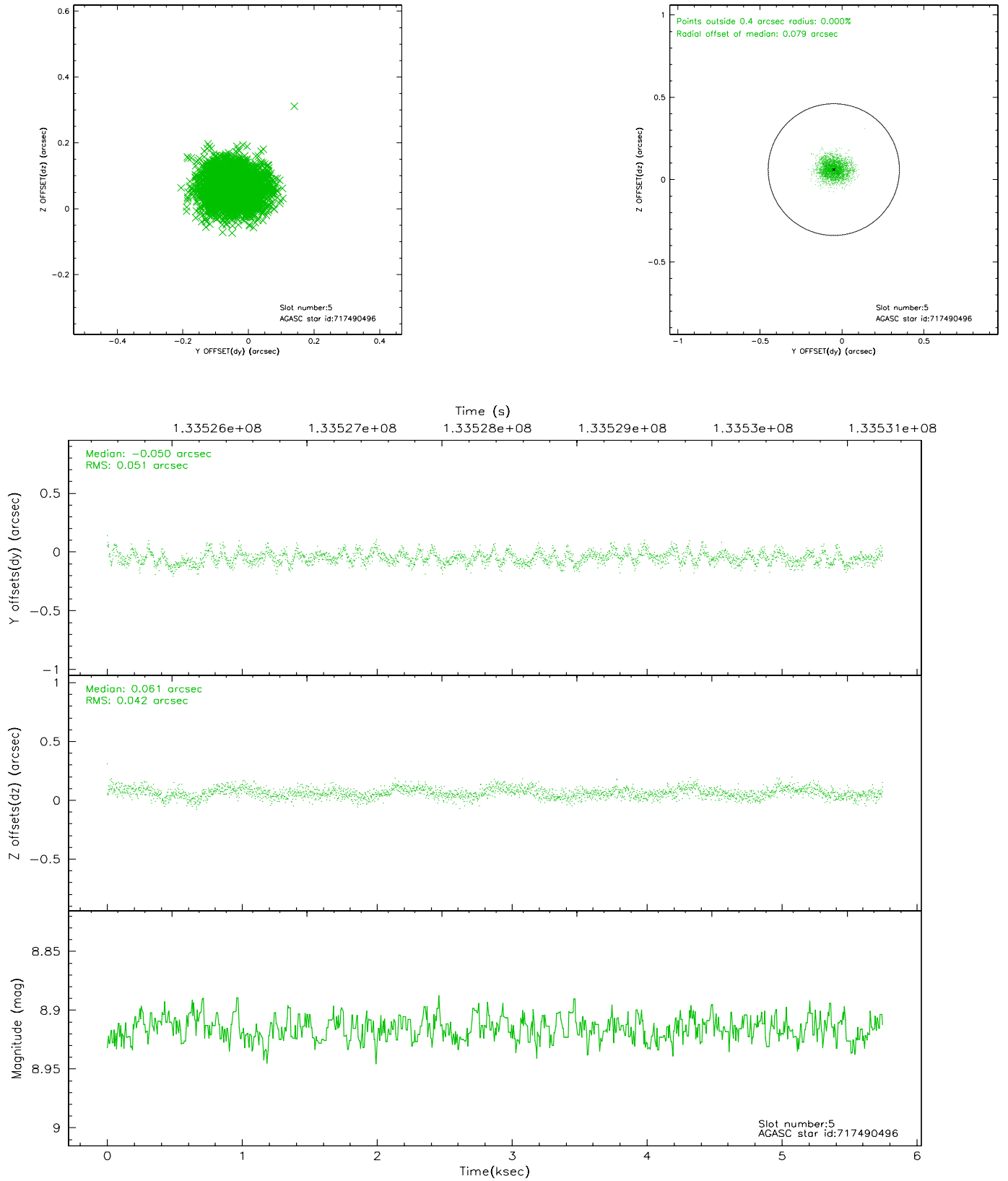
2.4.1 Slot 3



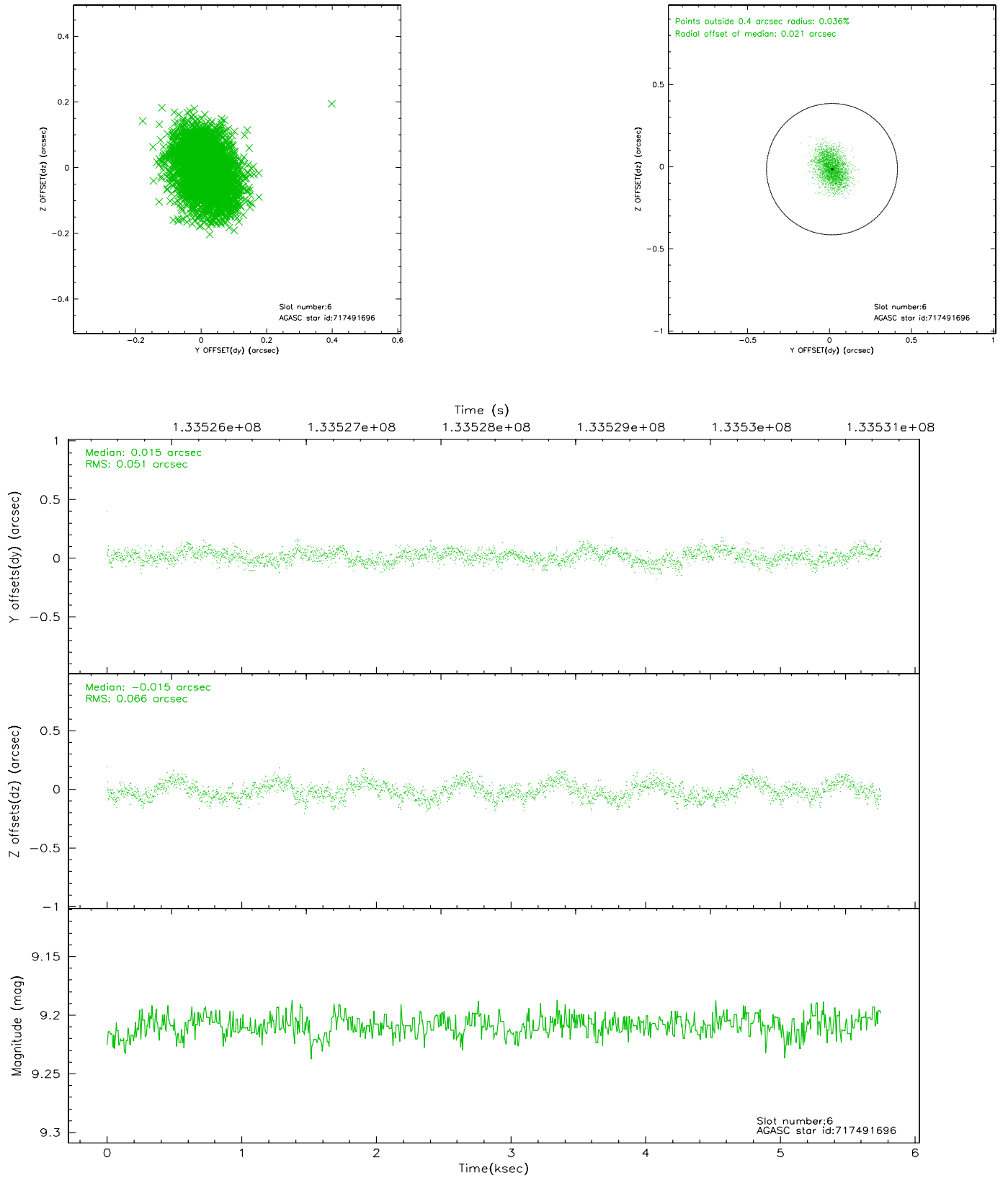
2.4.2 Slot 4



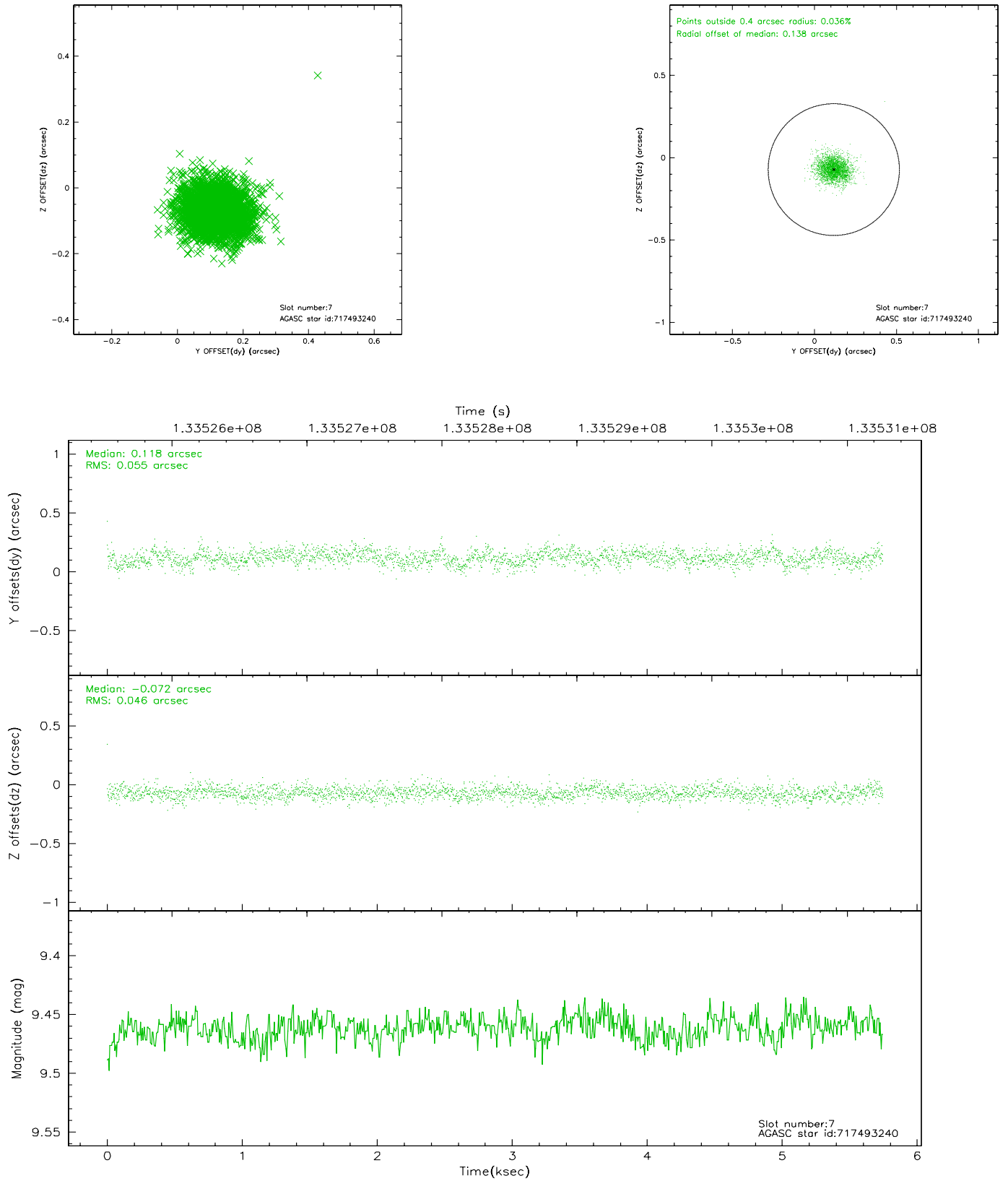
2.4.3 Slot 5



2.4.4 Slot 6

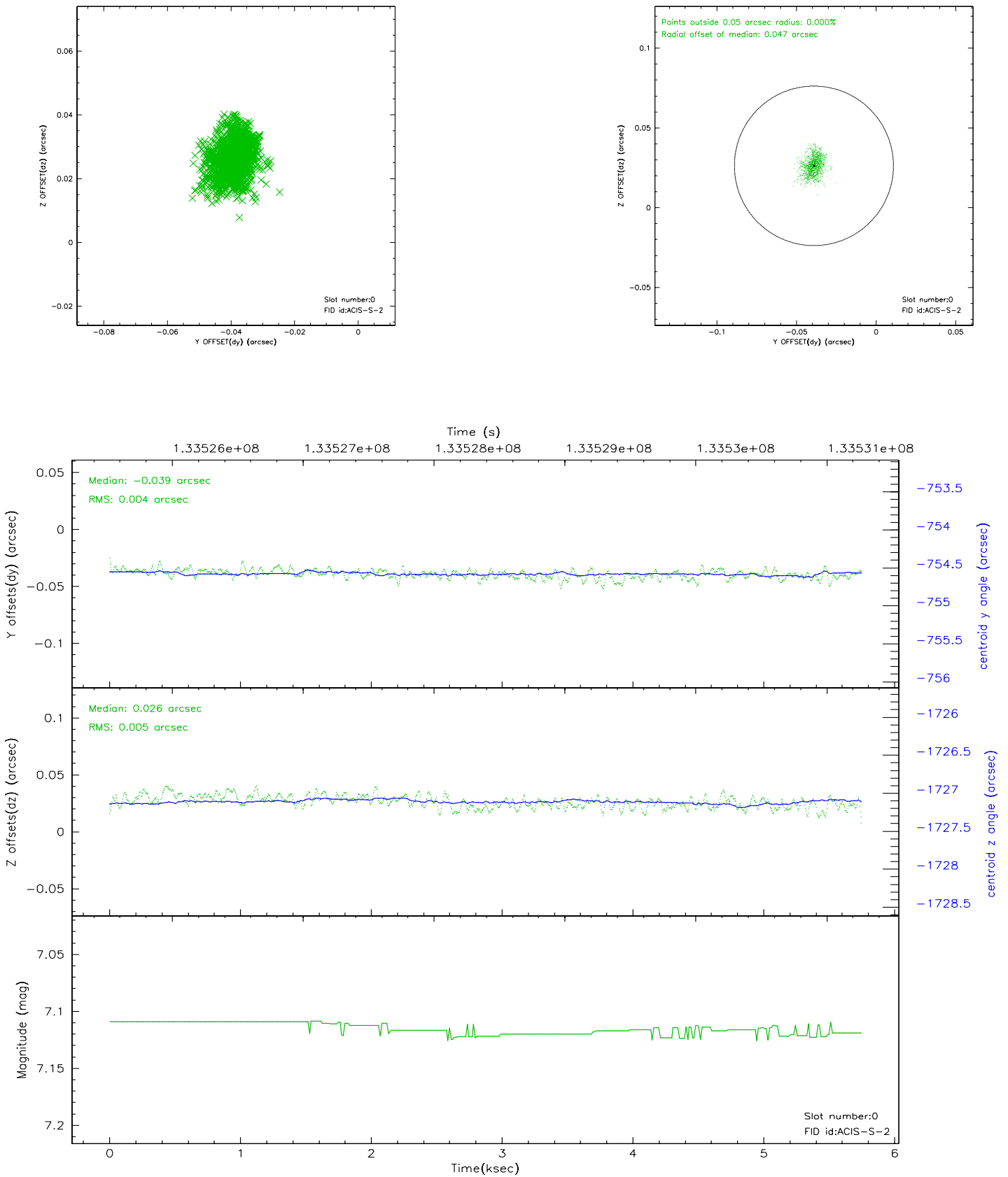


2.4.5 Slot 7

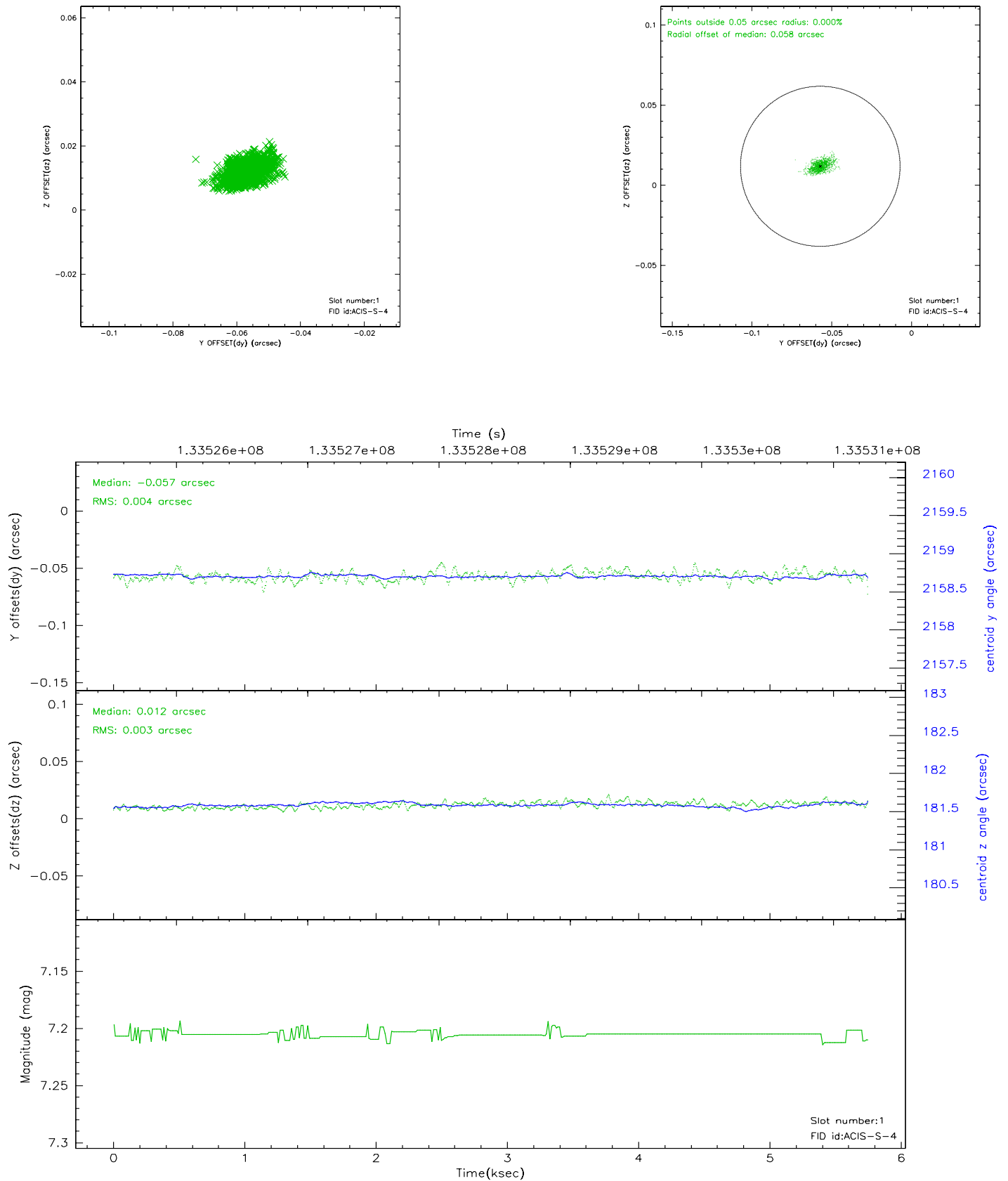


2.5 FID Slots

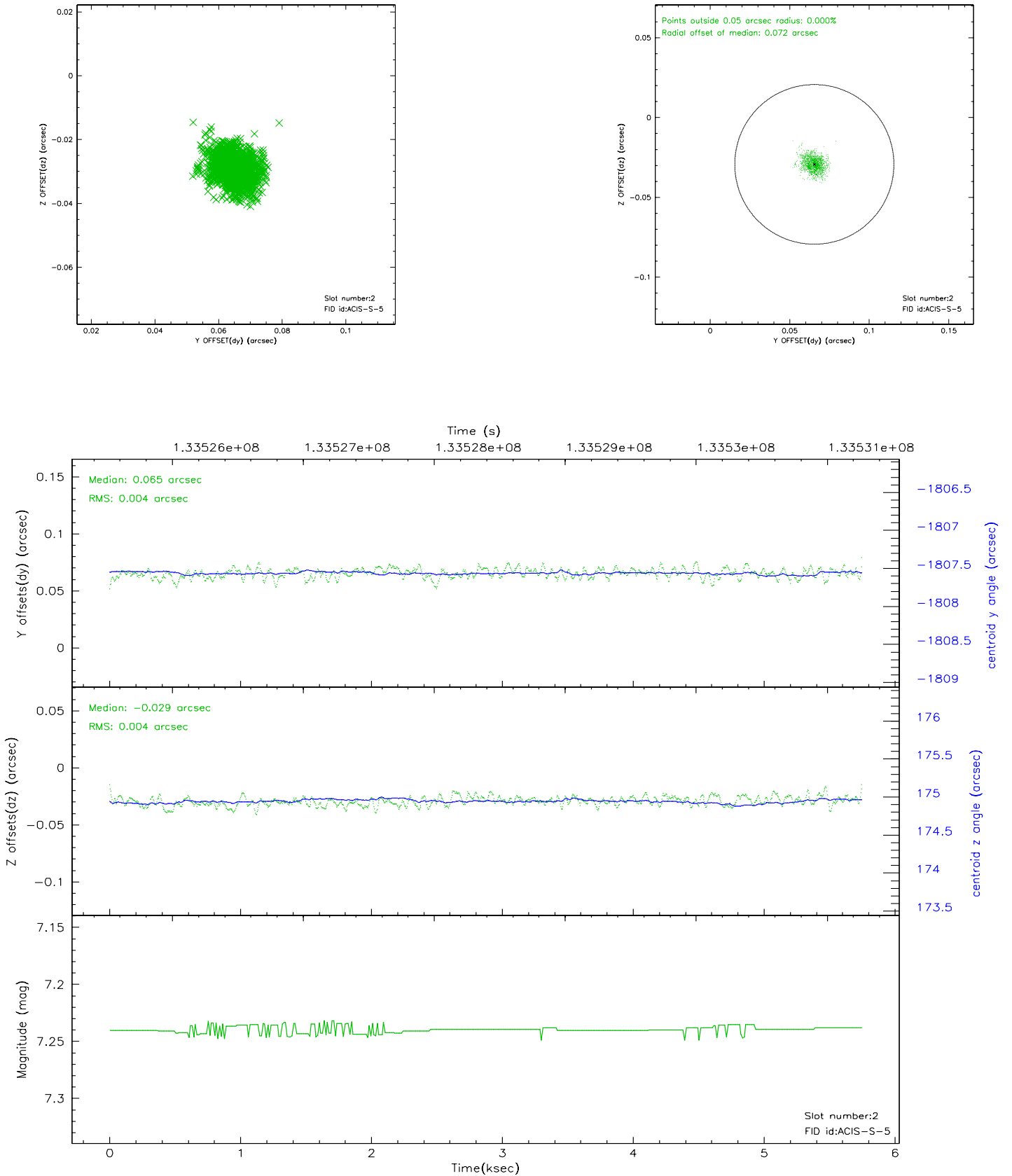
2.5.1 Slot 0



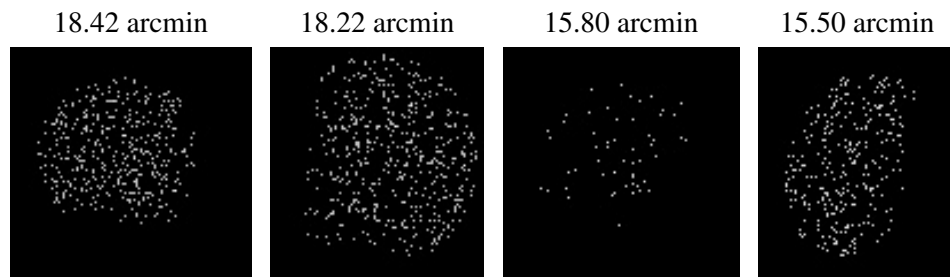
2.5.2 Slot 1



2.5.3 Slot 2



3 Point Sources



A Summary

A.1 Status

V&V Scientist	Jen Lauer
V&V Date (YYYY-MM-DD)	2006.09.08
V&V Edition	1
V&V Disposition and Status	OK
V&V Charge Time	5.551

A.2 Comments