

V&V Reference Report

L2 ASCDS Version : 8.4.5

Observation 3069 - L2 Version 3
Chandra X-Ray Center

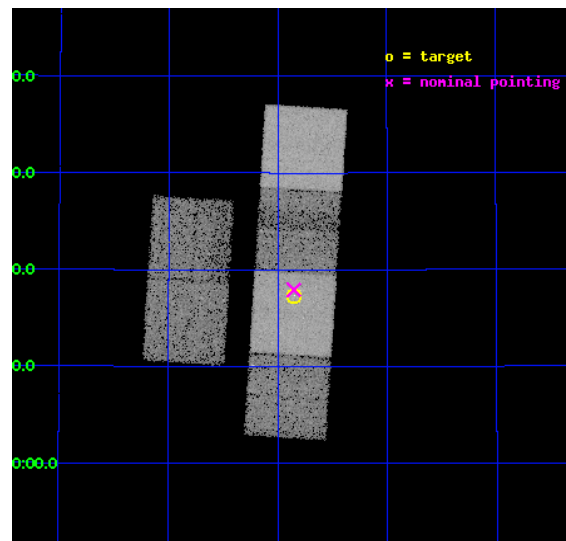
L2 Processing Date : Sep 30 2012

Contents

1	Front	2
2	OBI	3
2.1	OBI	3
2.1.1	Images	3
2.1.2	Bias	3
2.1.3	Parameters	4
2.1.4	Events	4
2.2	Compared Parameters	5
2.3	Aspect	6
2.4	Star Slots	9
2.4.1	Slot 3	9
2.4.2	Slot 4	10
2.4.3	Slot 5	11
2.4.4	Slot 6	12
2.4.5	Slot 7	13
2.5	FID Slots	14
2.5.1	Slot 0	14
2.5.2	Slot 1	15
2.5.3	Slot 2	16
A	Summary	17
A.1	Status	17
A.2	Comments	17

1 Front

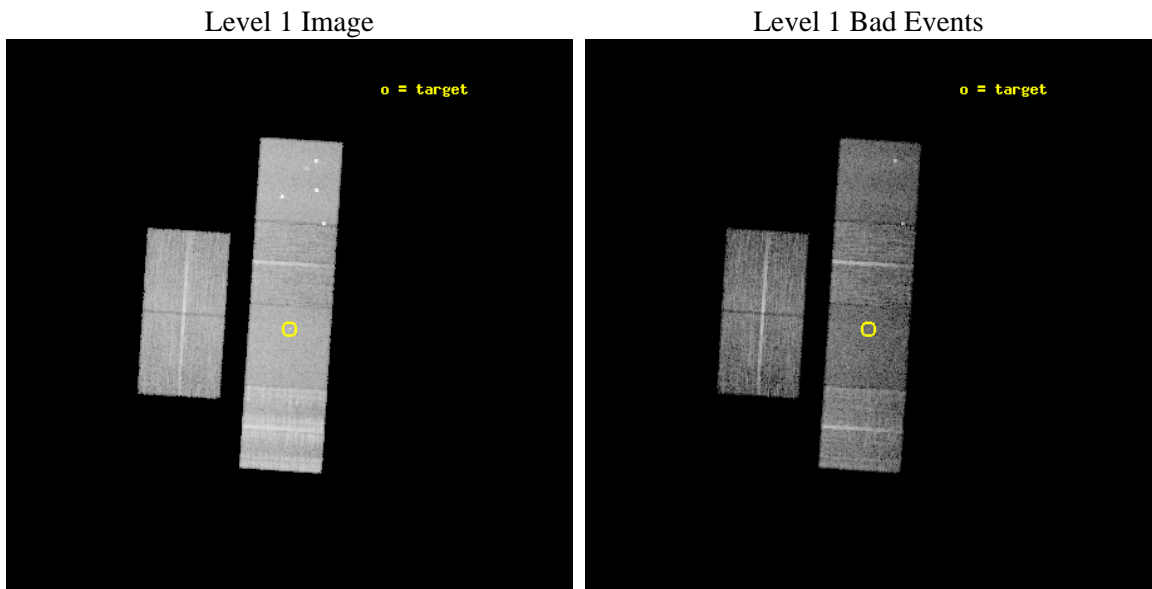
seq_num	700508	Sequence number
obs_id	3069	Observation id
title	X-RAY WEAK BROAD-LINE QUASARS: ABSORPTION OR INTRINSIC X_RAY WEAKNESS ?	Proposal title
observer	Dr Guido Risaliti	Principal investigator
object	HS 1111+4033	Source name
dtcycle	0	
cycle	P	events from which exps? Prim/Second/Both
ra_targ	168.461667	Observer's specified target RA [deg]
dec_targ	40.289167	Observer's specified target Dec [deg]
ra_nom	168.46306890962	Nominal RA [deg]
dec_nom	40.298817160186	Nominal Dec [deg]
roll_nom	93.681710217807	Nominal Roll [deg]
revision	3	Processing version of data
ontime	9753.5570340753	Sum of GTIs [s]
livetime	9630.0516220228	Livetime [s]
ontime2	9753.5980740786	Sum of GTIs [s]
ontime3	9753.4339140803	Sum of GTIs [s]
ontime5	9753.515994072	Sum of GTIs [s]
ontime6	9753.4749540836	Sum of GTIs [s]
ontime7	9753.5570340753	Sum of GTIs [s]
ontime8	9750.1518041492	Sum of GTIs [s]
l2events	125614	Number of level 2 events



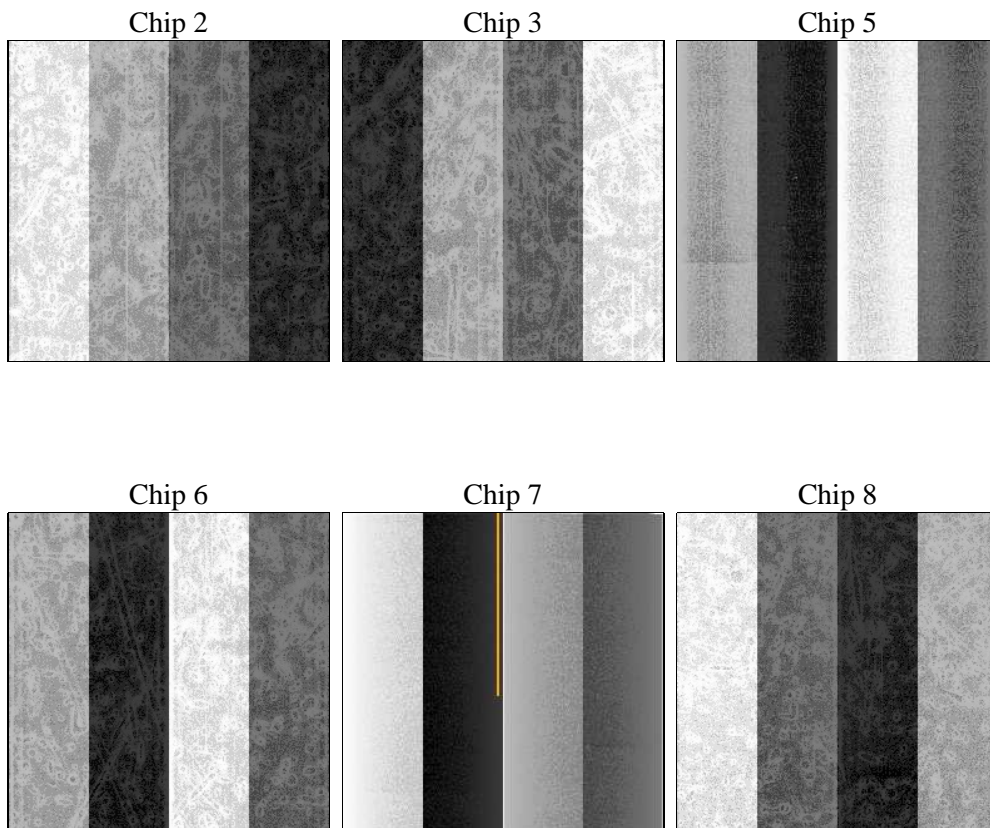
2 OBI

2.1 OBI

2.1.1 Images



2.1.2 Bias



2.1.3 Parameters

obi_num	0	Obi number	sched_exp_time	10000.000000	[s] Scheduled observation exposure time
ascdsver	8.4.5	Processing system revision	ontime	9753.5570340753	Sum of GTIs [s]
caldsver	4.5.2	 	ontime2	9753.5980740786	Sum of GTIs [s]
date	2012-09-30T03:56:04	Date and time of file creation	ontime3	9753.4339140803	Sum of GTIs [s]
revision	3	Processing version of data	ontime5	9753.515994072	Sum of GTIs [s]
			ontime6	9753.4749540836	Sum of GTIs [s]
			ontime7	9753.5570340753	Sum of GTIs [s]
			ontime8	9750.1518041492	Sum of GTIs [s]
			l1events	557507	Number of level 1 events

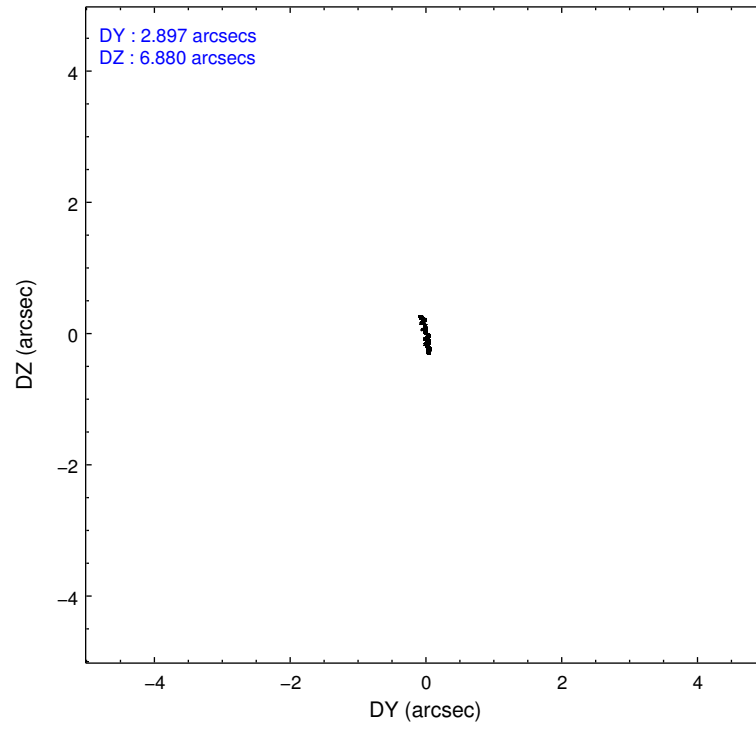
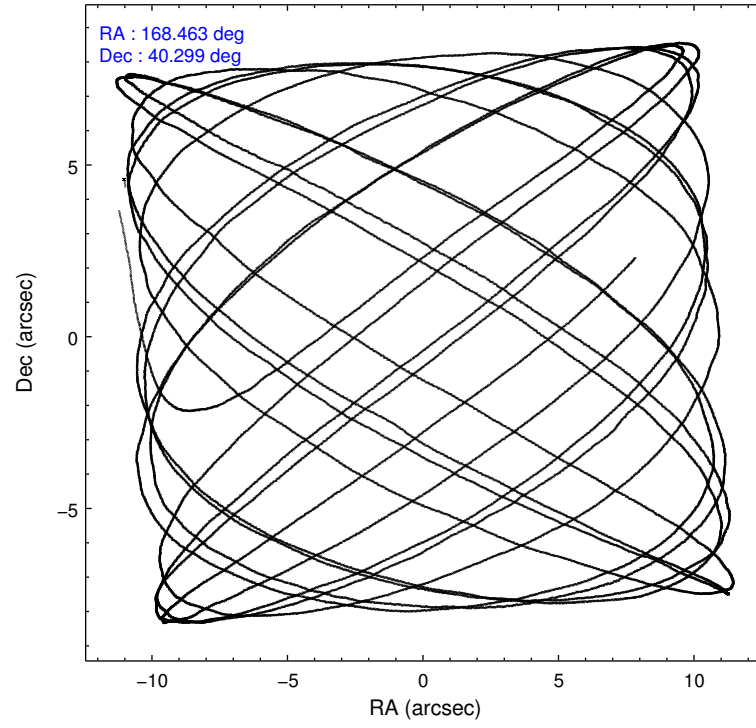
2.1.4 Events

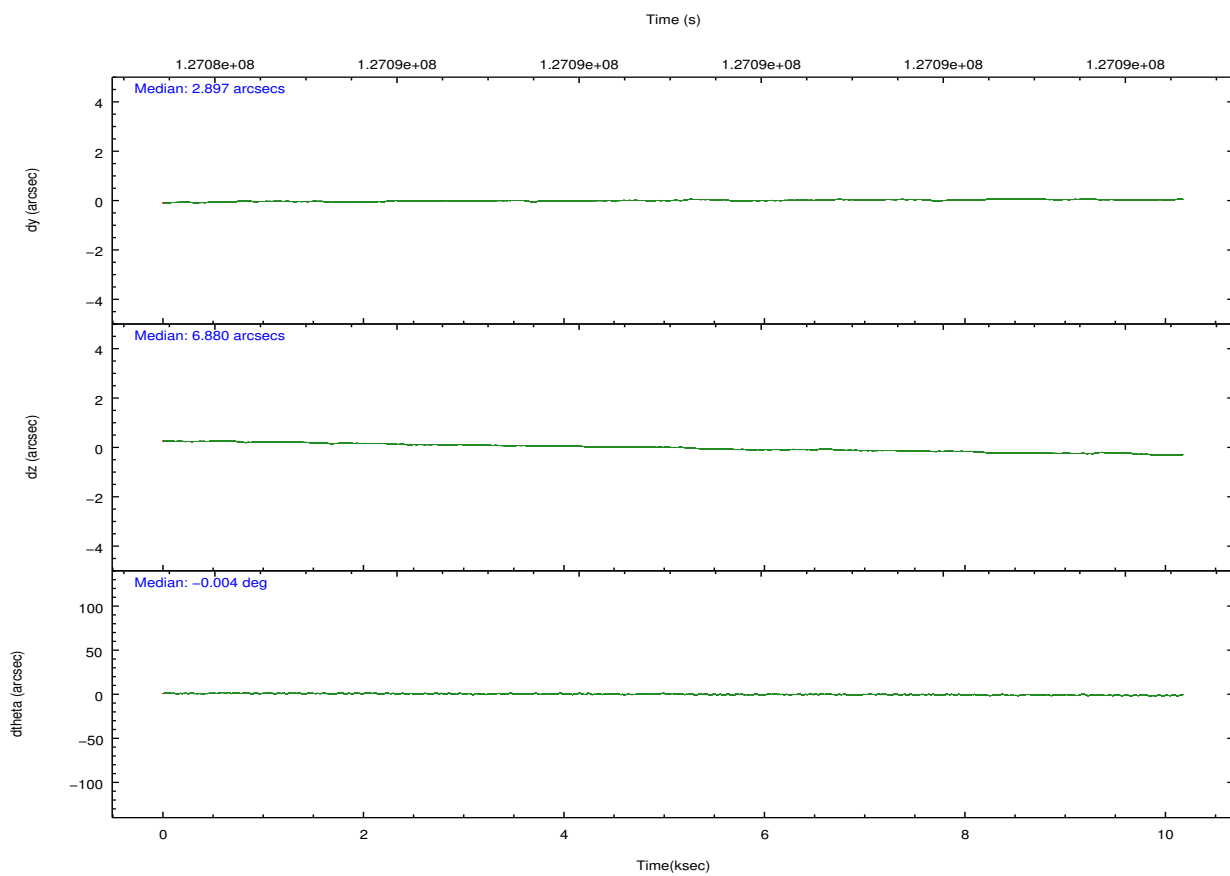
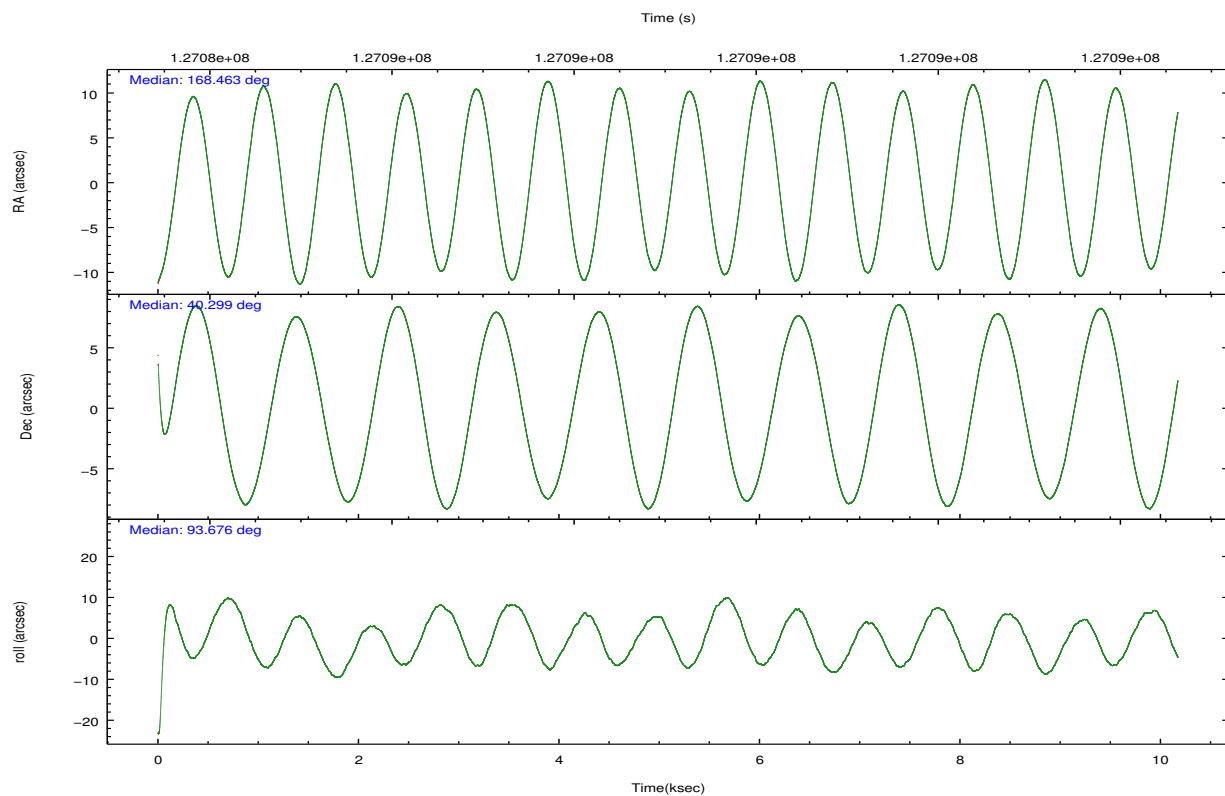
	ccd 2	ccd 3	ccd 5	ccd 6	ccd 7	ccd 8		ccd 2	ccd 3	ccd 5	ccd 6	ccd 7	ccd 8
level 1 events	79607	74175	100104	77288	88516	137817	grade 0 events	5553	5103	7980	5681	4261	19641
rejected events	67000	62264	50577	64349	48573	76110		6%	6%	7%	7%	4%	14%
rejected %	84%	83%	50%	83%	54%	55%	grade 1 events	49	35	309	42	84	137
								0%	0%	0%	0%	0%	0%
							grade 2 events	3248	2934	14120	3238	8123	9980
								4%	3%	14%	4%	9%	7%
							grade 3 events	752	802	2335	828	3614	9970
								0%	1%	2%	1%	4%	7%
							grade 4 events	880	841	2195	879	3647	8810
								1%	1%	2%	1%	4%	6%
							grade 5 events	2226	2419	7061	2609	7932	3870
								2%	3%	7%	3%	8%	2%
							grade 6 events	2187	2249	22946	2328	20327	13390
								2%	3%	22%	3%	22%	9%
							grade 7 events	64712	59792	43158	61683	40528	72019
								81%	80%	43%	79%	45%	52%

2.2 Compared Parameters

Parameter	Planned	Actual	Parameter	Planned	Actual
Instrument	ACIS	ACIS	Obspar format version number	7	7
Detector	ACIS-235678	ACIS-235678	Obspar file type	PREDICTED	ACTUAL
Grating	NONE	NONE	Obspar update status	NONE	UPDATED
Data mode	FAINT	FAINT	Number of optional ACIS chips dropped	0	0
Observation mode	POINTING	POINTING	On-chip summing requested	N	N
[deg] Pointing RA	168.483279	168.4630689096225	Subarray requested	NONE	NONE
[deg] Pointing Dec	40.276330	40.29881716018551	Alternating exposures requested	N	N
[deg] Pointing Roll	93.512055	93.68171021780728	[s] Primary exposure time	0.000000	3.2
[mm] SIM focus pos	-0.684267	-0.6828225247311905			
[mm] SIM defocus	0	0.001444936568705701			
[mm] SIM translation stage pos	-190.132523	-190.1400660498719			
[mm] SIM translation stage offset	0	0.00754346686406393			
[s] Observation start time (MET)	127084118.184000	127083229.90862			
Observation start date	2002-01-10T21:07:34	2002-01-10T20:53:49			
[s] Observation end time (MET)	127094118.184000	127094445.97157			
Observation end date	2002-01-10T23:54:14	2002-01-11T00:00:45			
Read mode	TIMED	TIMED			

2.3 Aspect



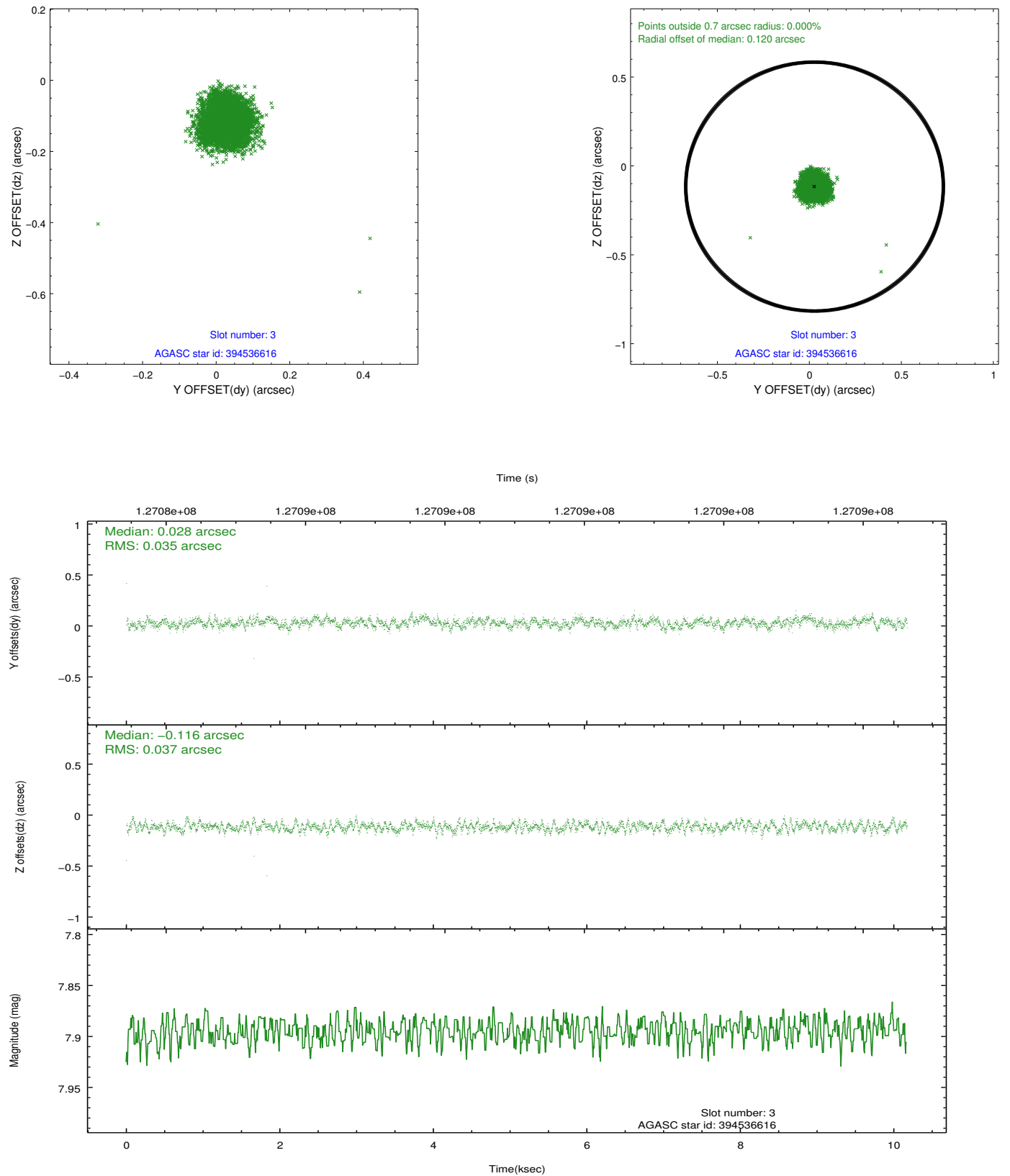


Slot Statistics

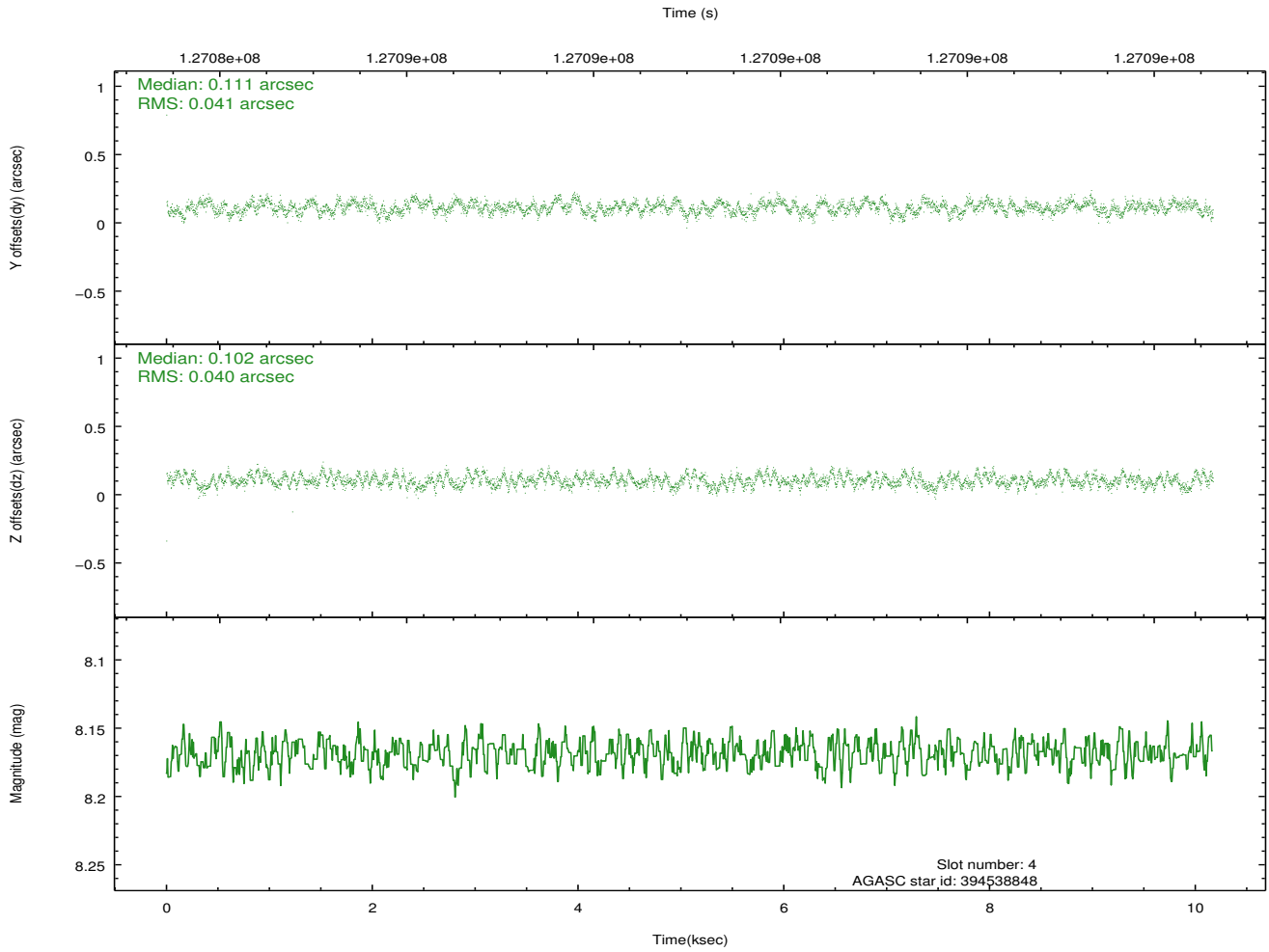
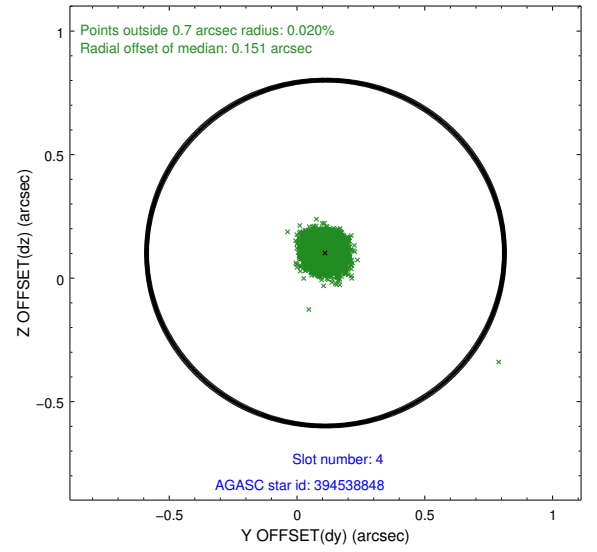
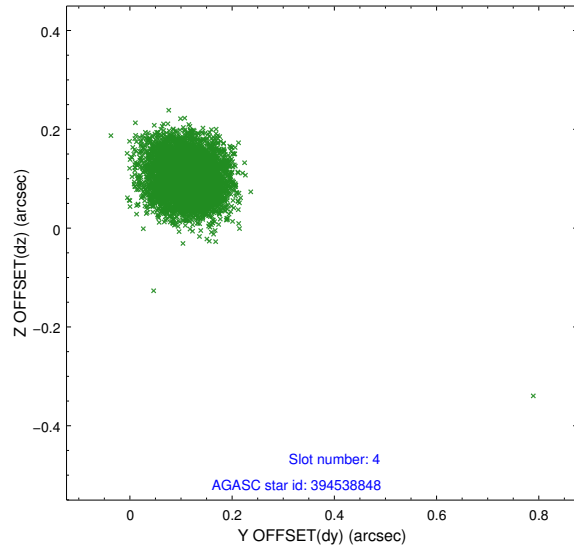
slot	status	id	mag	n_pts	med_dy	med_dz	dr1	dr2	ra	dec	mean_y	mean_z
0	FID	ACIS-S-2	7.12	2481	-0.018	0.008	0.007	0.012	0.000000	0.000000	-755.54	-1728.02
1	FID	ACIS-S-4	7.20	2481	-0.035	0.006	0.006	0.011	0.000000	0.000000	2157.47	179.95
2	FID	ACIS-S-5	7.24	2482	0.021	-0.006	0.007	0.012	0.000000	0.000000	-1807.69	174.16
3	GUIDE	394536616	7.89	4962	0.028	-0.116	0.054	0.084	168.478245	39.977764	-1071.21	78.78
4	GUIDE	394538848	8.17	4961	0.111	0.102	0.061	0.095	168.933756	39.713157	-2096.00	-1122.60
5	GUIDE	394541312	8.86	4955	0.039	-0.080	0.080	0.138	168.142879	40.534286	986.17	871.19
6	GUIDE	394540984	9.07	4962	-0.060	0.150	0.074	0.122	169.035193	40.529906	824.54	-1564.37
7	GUIDE	394536664	9.51	4956	-0.117	-0.055	0.086	0.141	167.975457	40.752410	1800.36	1275.61

2.4 Star Slots

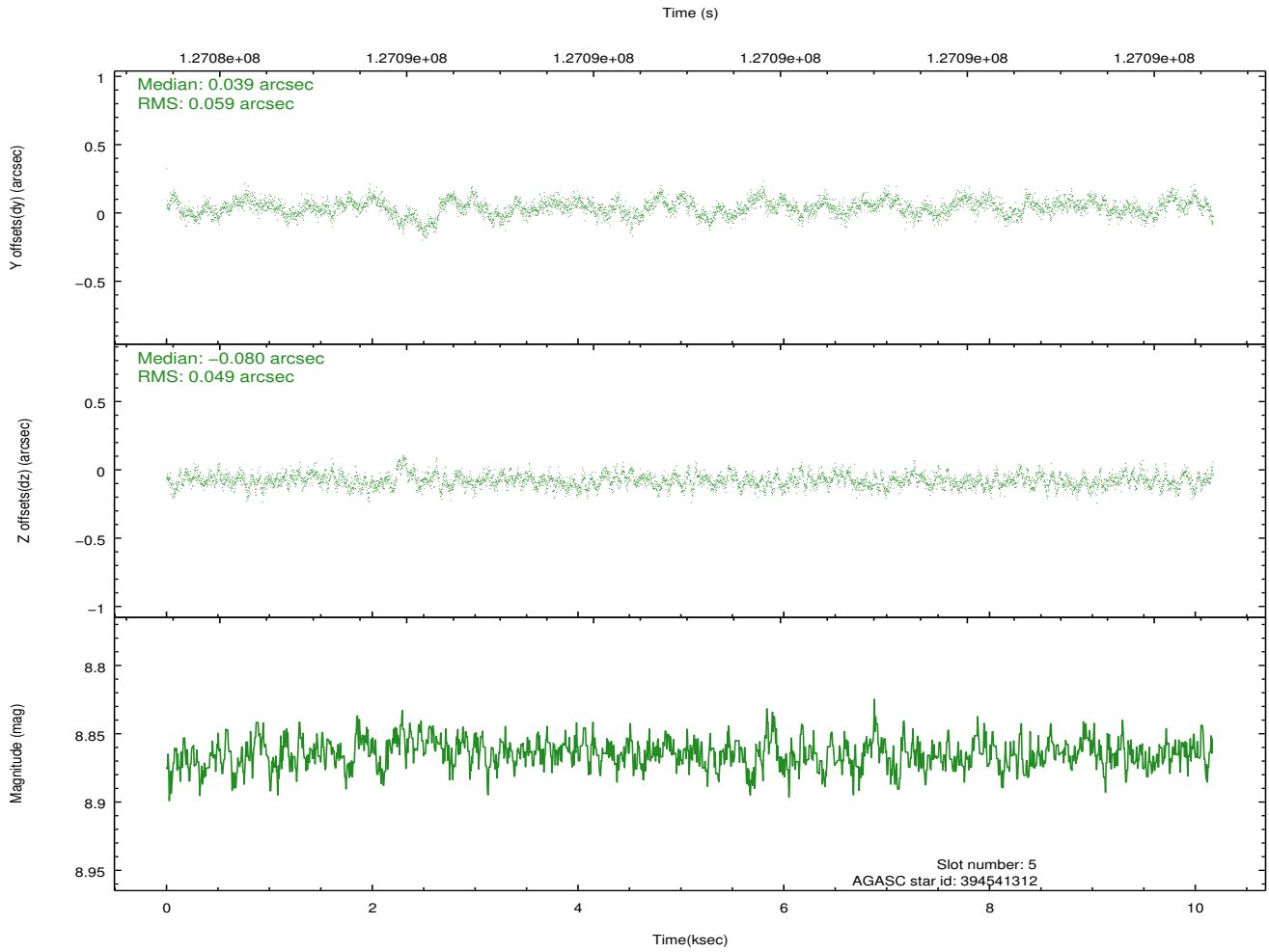
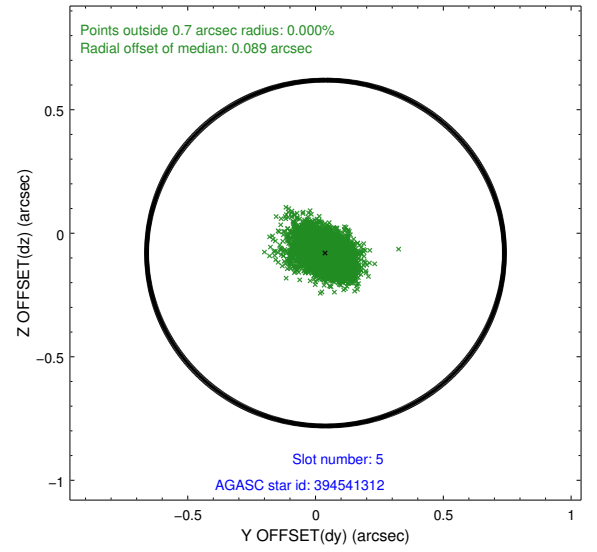
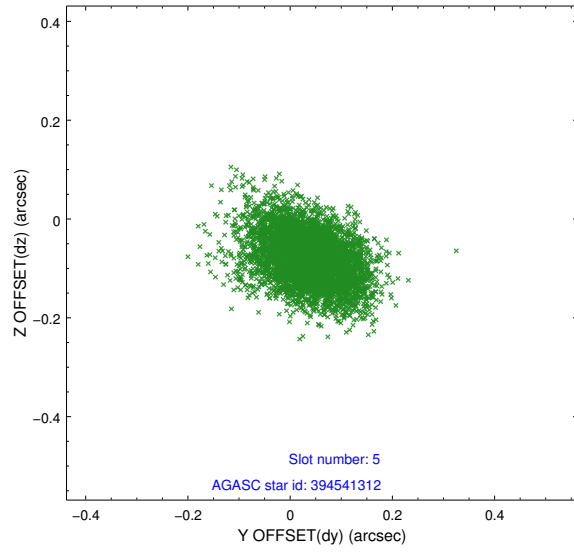
2.4.1 Slot 3



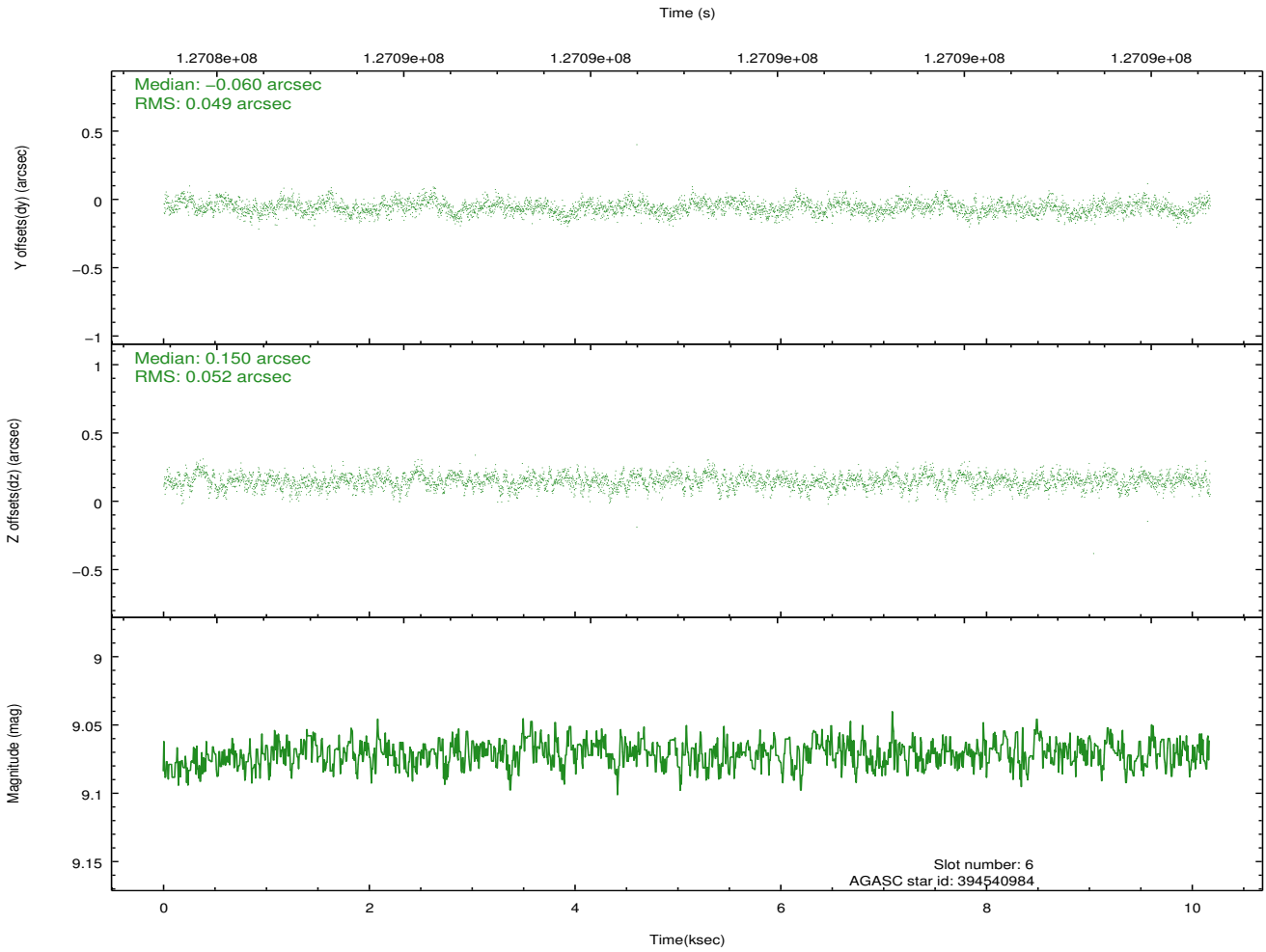
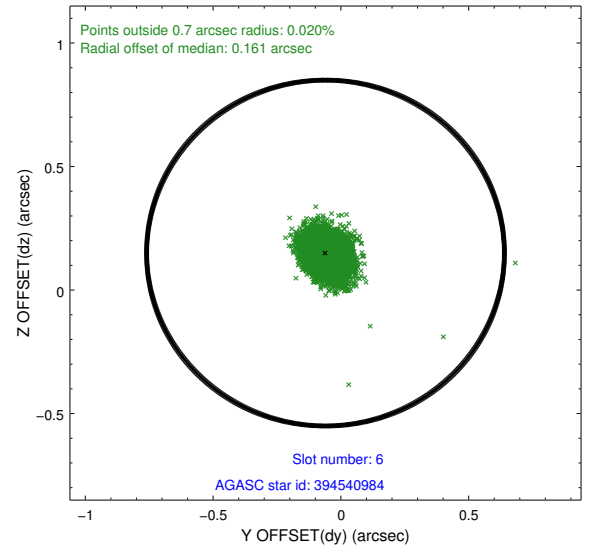
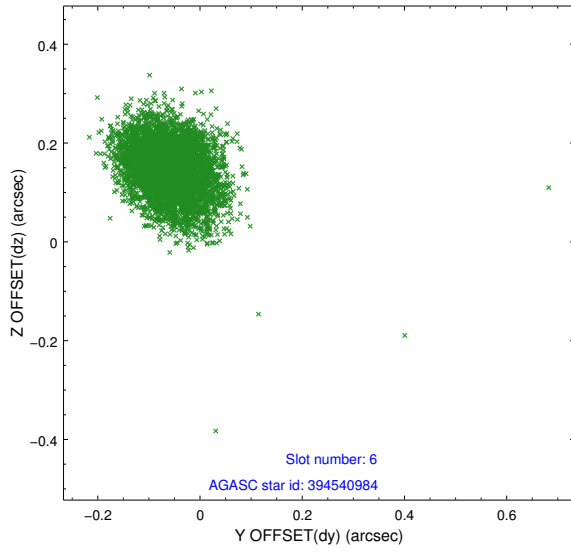
2.4.2 Slot 4



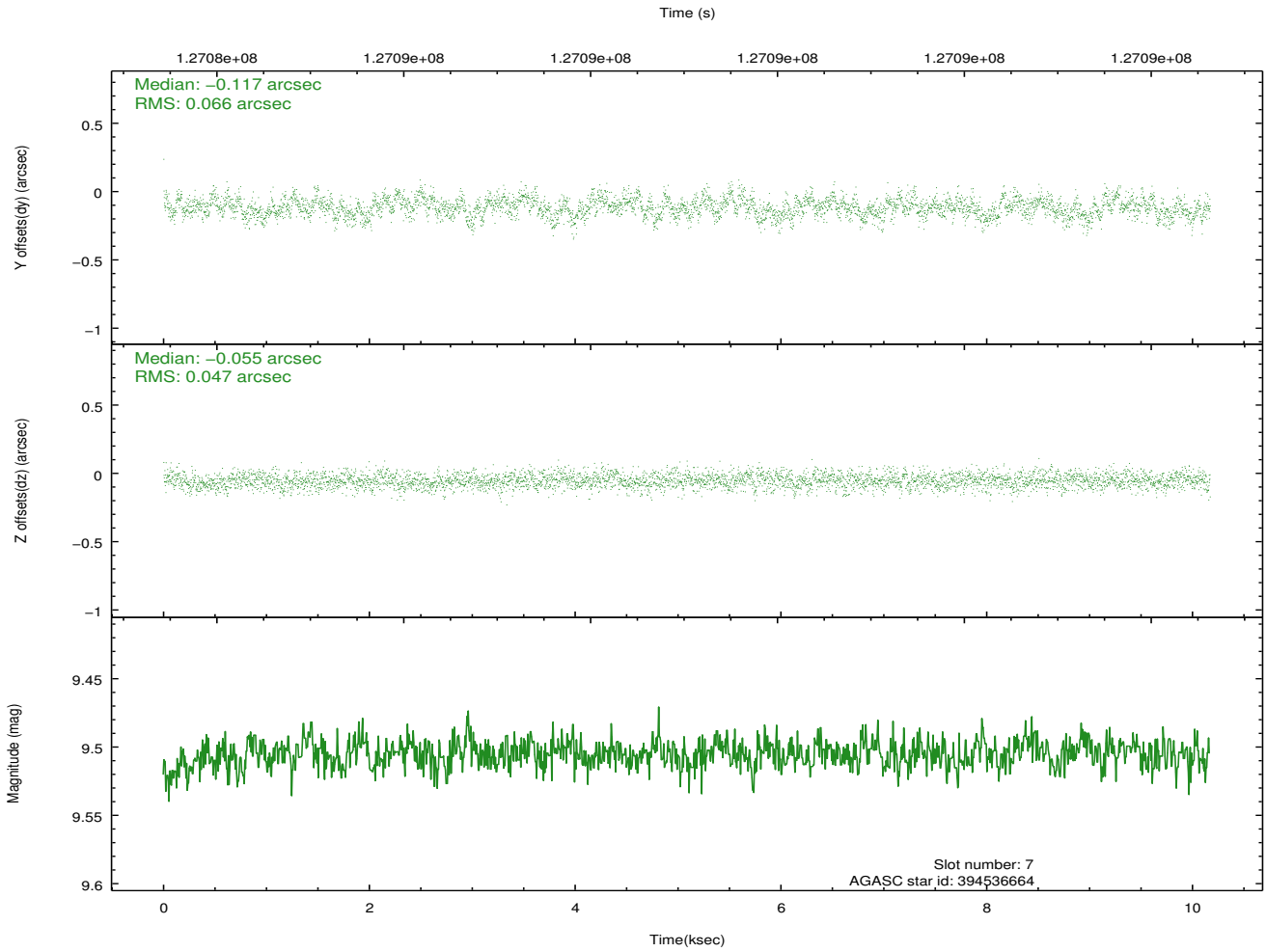
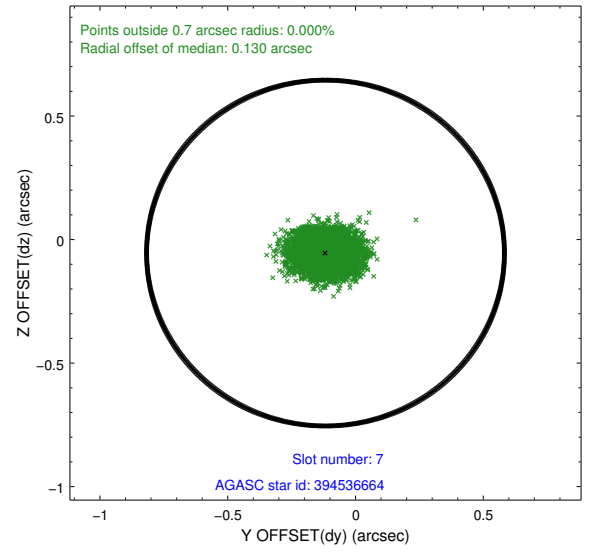
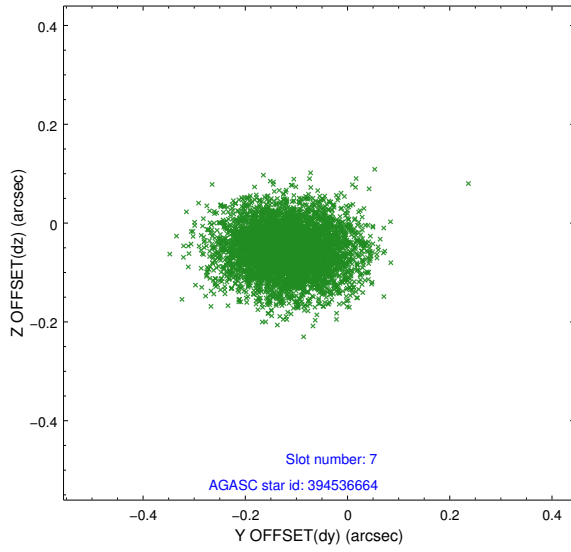
2.4.3 Slot 5



2.4.4 Slot 6

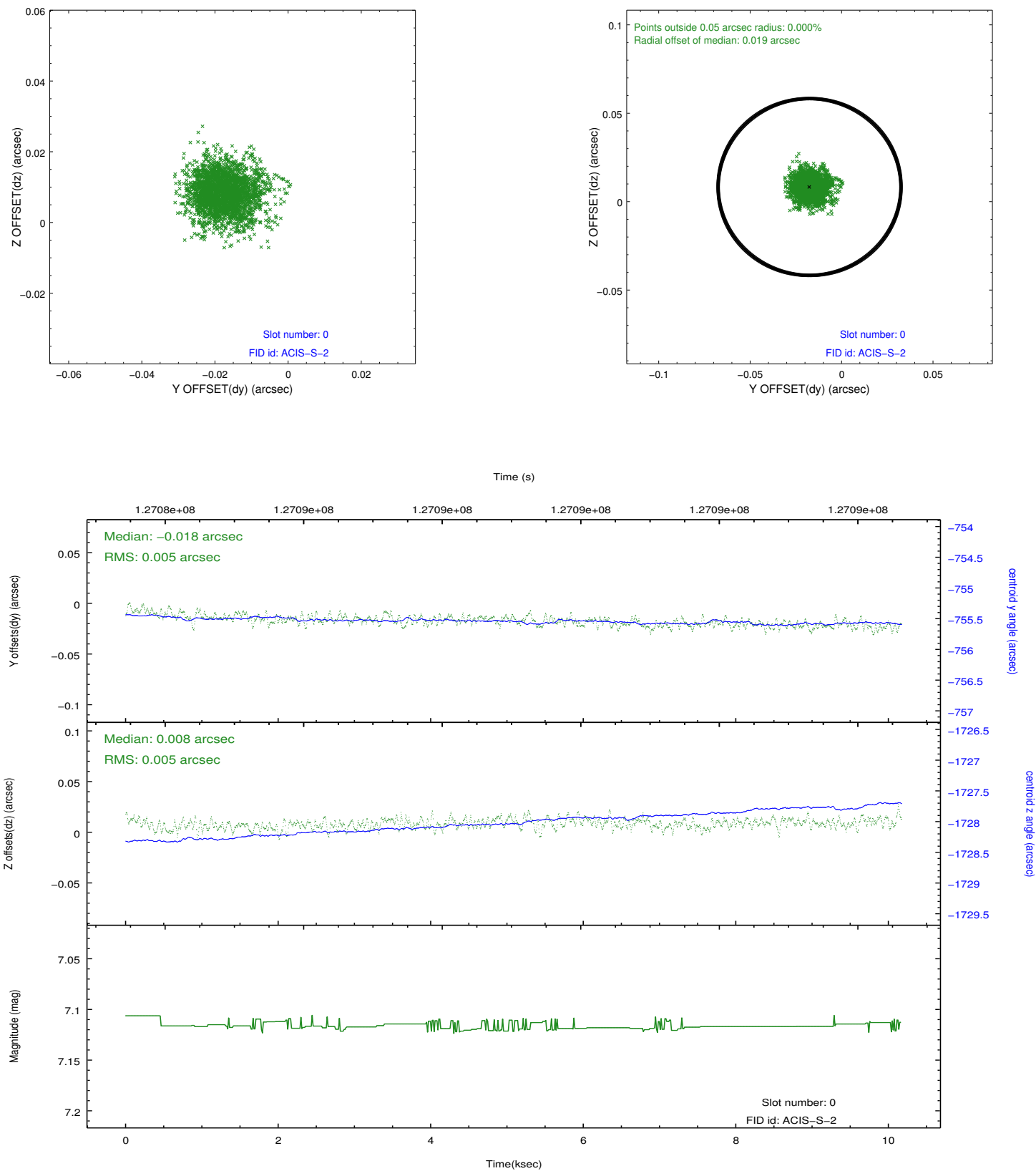


2.4.5 Slot 7

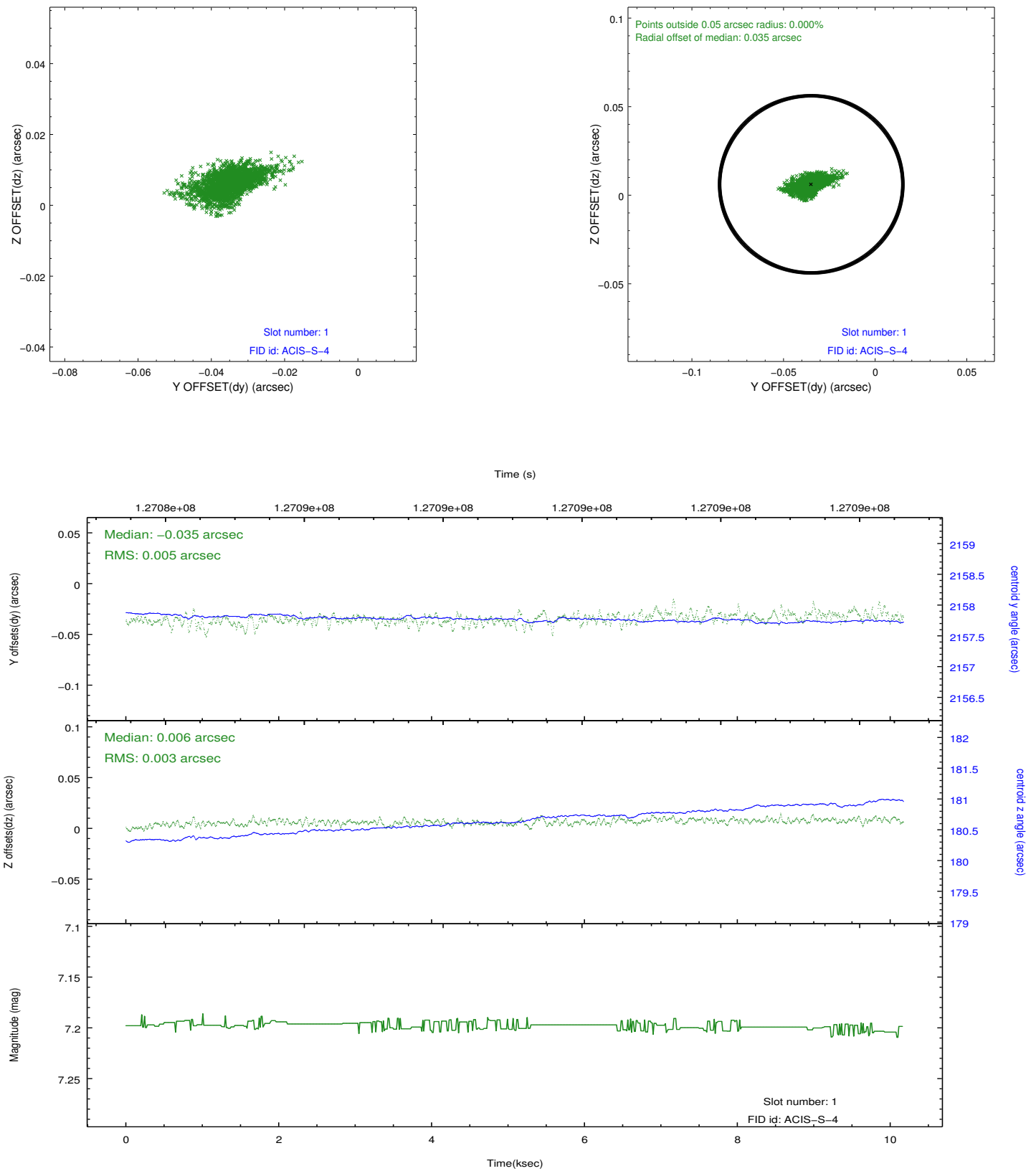


2.5 FID Slots

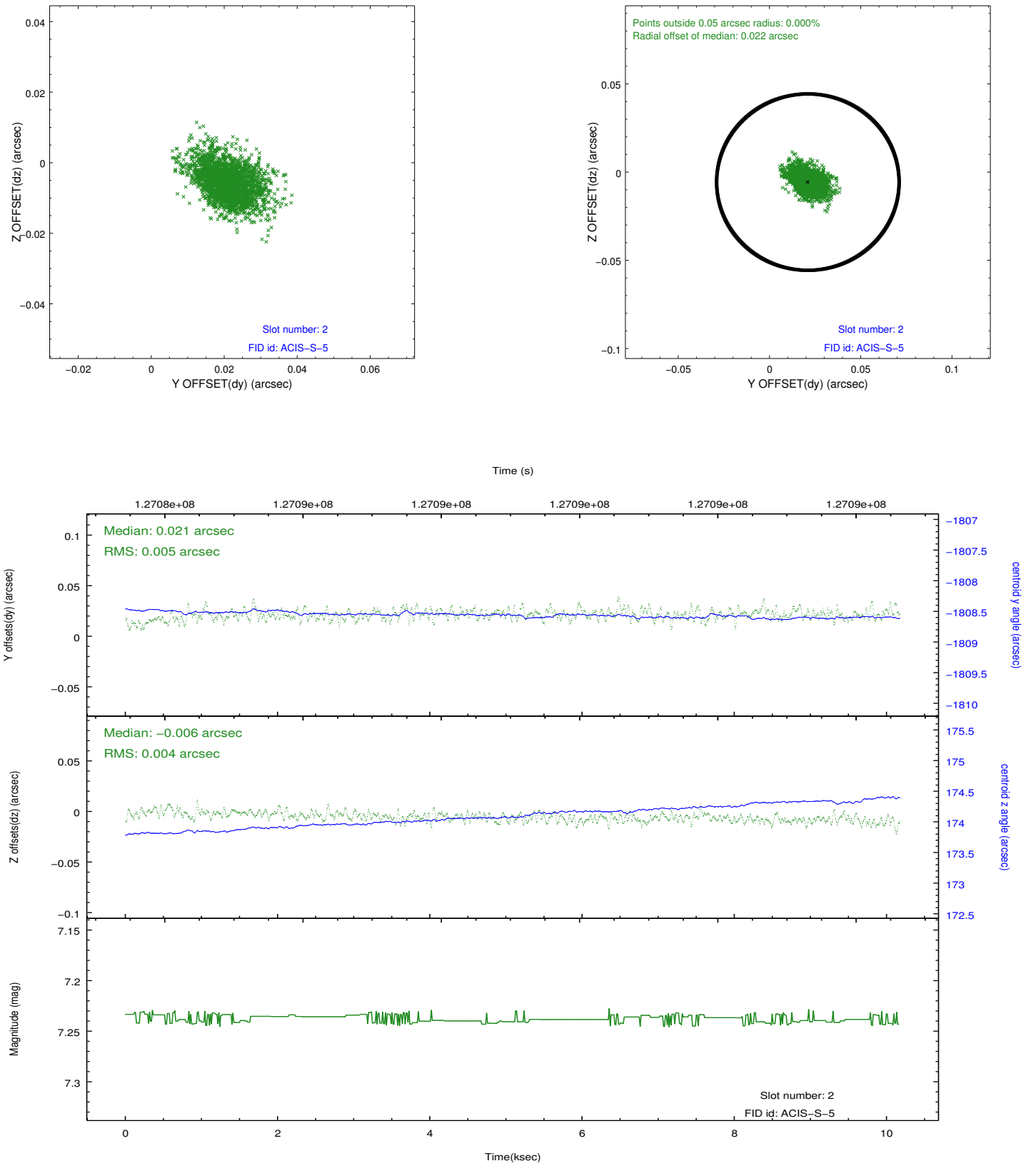
2.5.1 Slot 0



2.5.2 Slot 1



2.5.3 Slot 2



A Summary

A.1 Status

V&V Scientist	Jen Lauer
V&V Date (YYYY-MM-DD)	2012.10.02
V&V Edition	1
V&V Disposition and Status	OK
V&V Charge Time	9.756

A.2 Comments