

V&V Reference Report

L2 ASCDS Version : 7.6.8

Observation 2939 - L2 Version 001
Chandra X-Ray Center

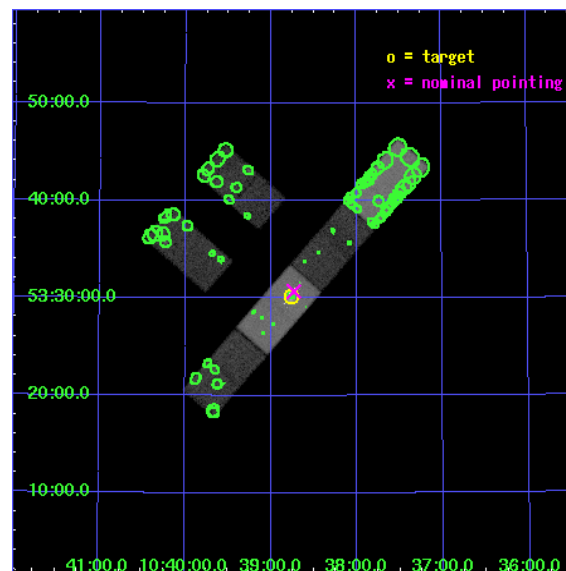
L2 Processing Date : Jul 19 2006

Contents

1	Front	2
2	OBI	3
2.1	OBI	3
2.1.1	Images	3
2.1.2	Bias	3
2.1.3	Parameters	4
2.1.4	Events	4
2.2	Compared Parameters	5
2.3	Aspect	6
2.4	Star Slots	9
2.4.1	Slot 3	9
2.4.2	Slot 4	10
2.4.3	Slot 5	11
2.4.4	Slot 6	12
2.4.5	Slot 7	13
2.5	FID Slots	14
2.5.1	Slot 0	14
2.5.2	Slot 1	15
2.5.3	Slot 2	16
3	Point Sources	17
A	Summary	18
A.1	Status	18
A.2	Comments	18

1 Front

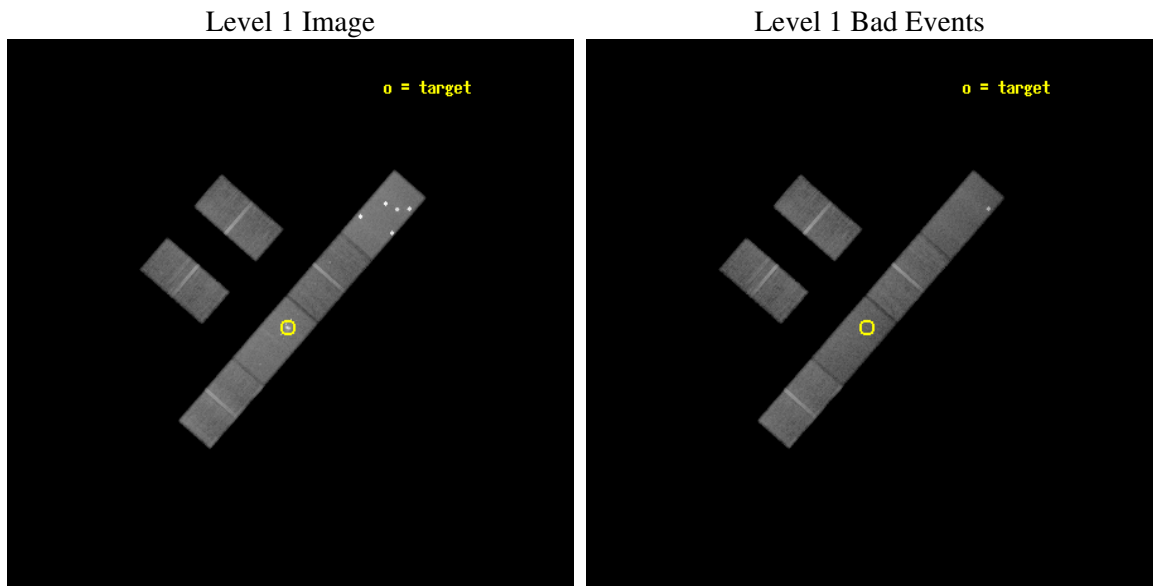
seq_num	600276
obs_id	2939
title	CHANDRA OBSERVATIONS OF THE X-RAY LUMINOUS STARBURST GALAXY NGC3310
observer	Dr. Andreas Zezas
object	NGC 3310
dtcycle	0
cycle	P
ra_targ	159.69125
dec_targ	53.503333
ra_nom	159.68290440952
dec_nom	53.511601735532
roll_nom	131.07635383491
revision	3
ontime	48231.000319421
livetime	47155.847007647
ontime2	48229.159319282
ontime3	48231.000319421
ontime5	48231.000319421
ontime6	48229.159319252
ontime7	48231.000319421
ontime8	48229.159319252
l2events	265167



2 OBI

2.1 OBI

2.1.1 Images

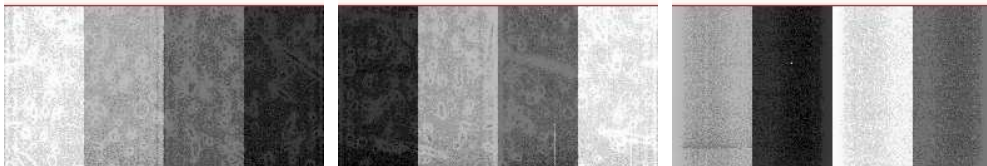


2.1.2 Bias

Chip 2

Chip 3

Chip 5



Chip 6

Chip 7

Chip 8



2.1.3 Parameters

obi_num	0
ascdsver	7.6.8
caldsver	3.2.2
date	2006-07-19T12:01:34
revision	3

sched_exp_time	48000.000000
ontime	48406.008198828
ontime2	48404.167198688
ontime3	48406.008198828
ontime5	48406.008198828
ontime6	48404.167198658
ontime7	48406.008198828
ontime8	48404.167198658
l1events	1240015

2.1.4 Events

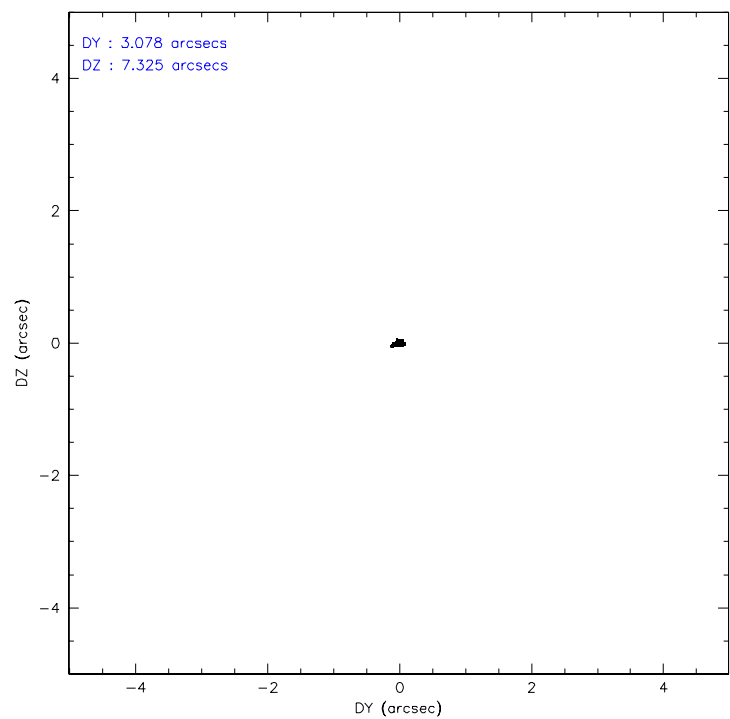
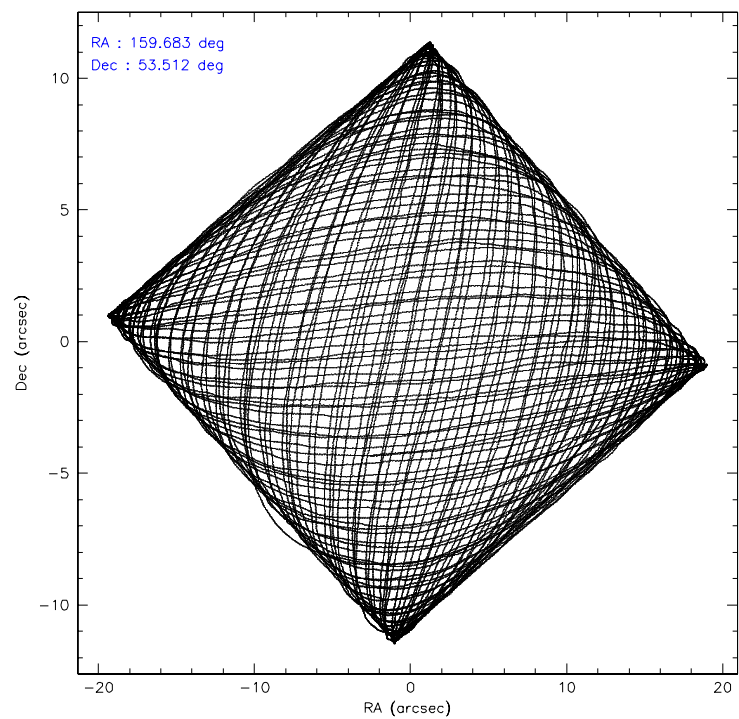
	ccd 2	ccd 3	ccd 5	ccd 6	ccd 7	ccd 8
level 1 events	169617	155981	318517	164446	226912	204542
rejected events	150424	137479	126729	144398	123625	163806
rejected %	88%	88%	39%	87%	54%	80%

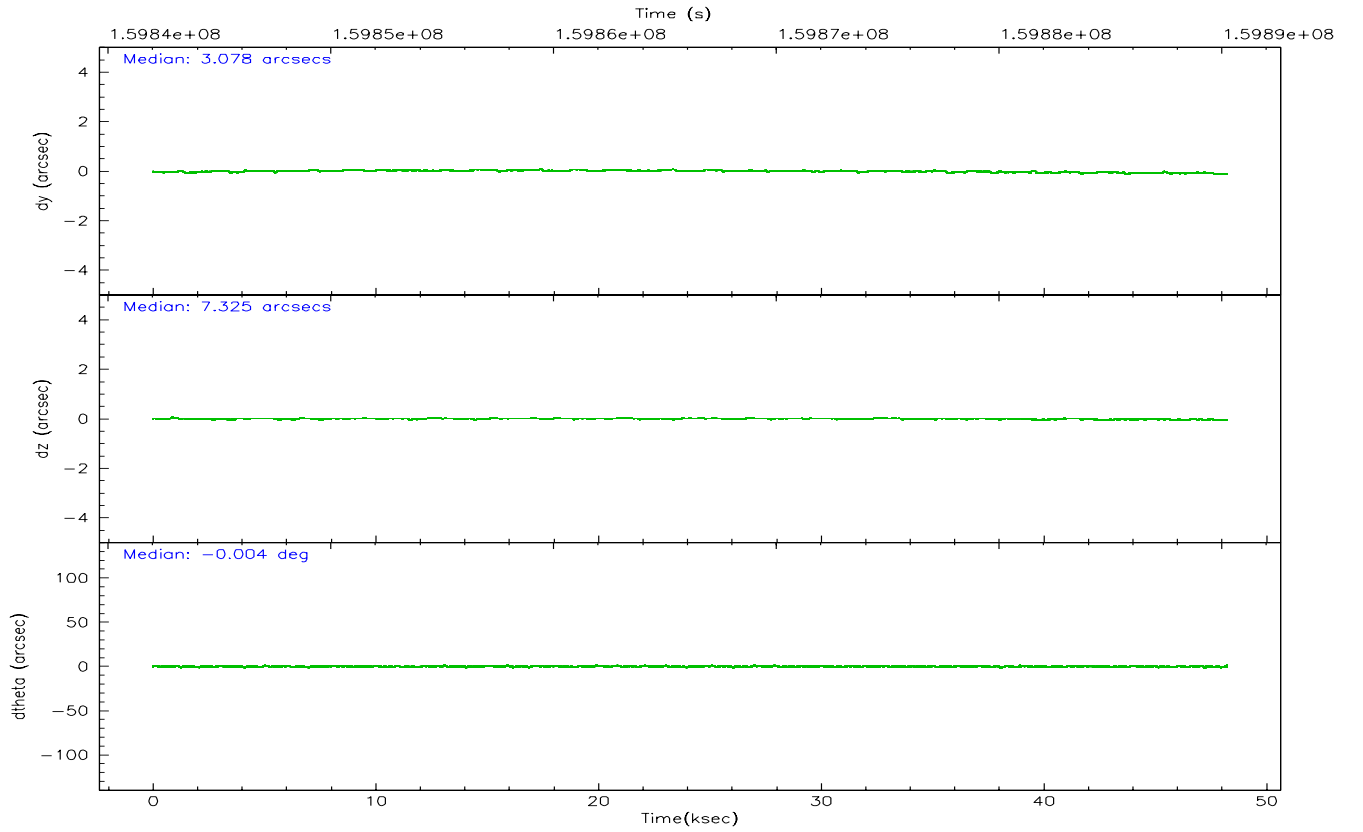
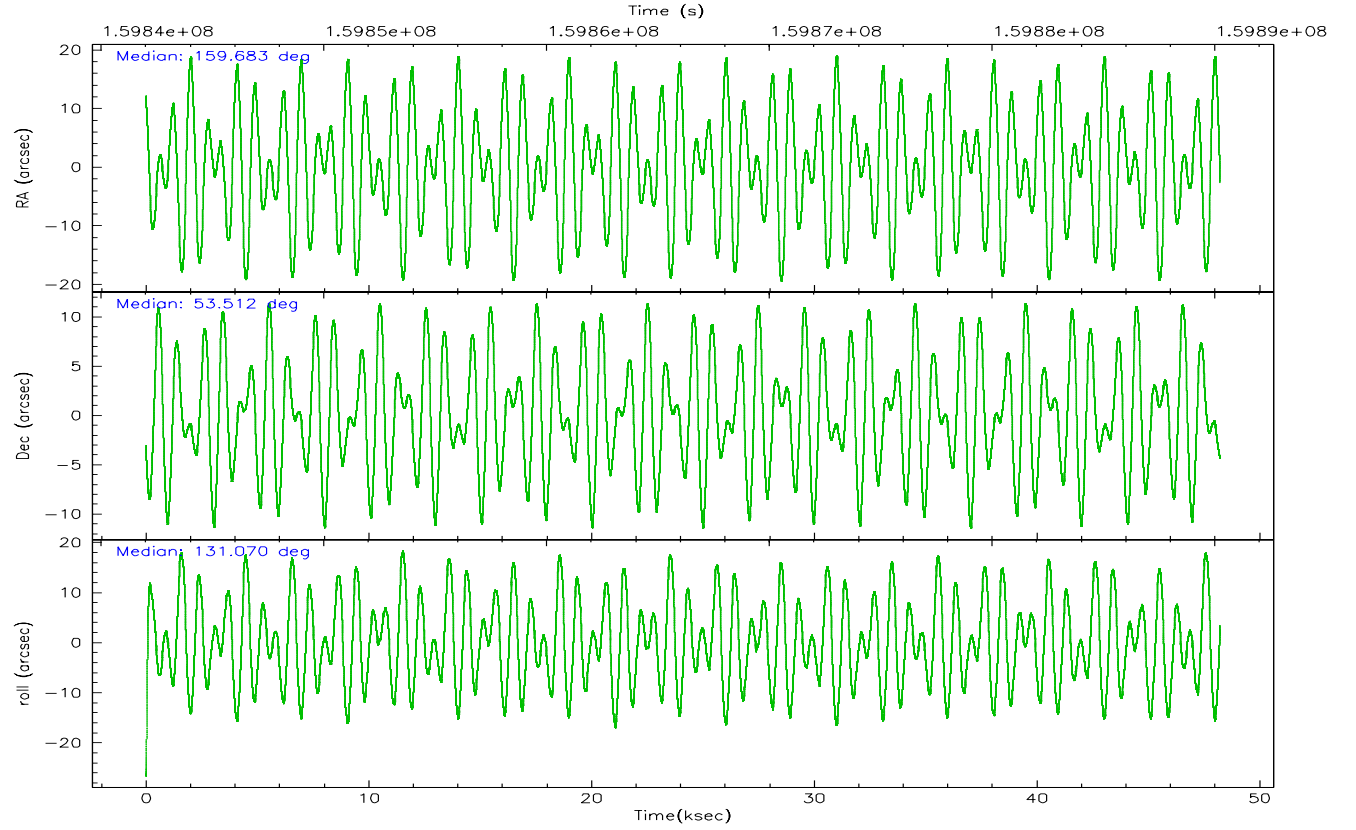
	ccd 2	ccd 3	ccd 5	ccd 6	ccd 7	ccd 8
grade 0 events	8362	7898	93995	8167	11135	12897
	4%	5%	29%	4%	4%	6%
grade 1 events	63	75	3657	52	148	89
	0%	0%	1%	0%	0%	0%
grade 2 events	3614	3378	33760	3930	25787	8735
	2%	2%	10%	2%	11%	4%
grade 3 events	2079	2136	3616	2220	7183	4473
	1%	1%	1%	1%	3%	2%
grade 4 events	2138	2020	3476	2180	7019	4205
	1%	1%	1%	1%	3%	2%
grade 5 events	5919	6263	10600	6691	14134	8530
	3%	4%	3%	4%	6%	4%
grade 6 events	3081	3132	57454	3637	52524	10520
	1%	2%	18%	2%	23%	5%
grade 7 events	144361	131079	111959	137569	108982	155093
	85%	84%	35%	83%	48%	75%

2.2 Compared Parameters

Parameter	Planned	Actual	Parameter	Planned	Actual
Instrument	ACIS	ACIS	Obspar format version number	6	6
Detector	ACIS-235678	ACIS-235678	Obspar file type	PREDICTED	ACTUAL
Grating	NONE	NONE	Obspar update status	NONE	UPDATED
Data mode	FAINT	FAINT	On-chip summing requested	N	N
Observation mode	POINTING	POINTING	Subarray requested	1/2	1/2
Pointing RA	159.726378	159.6829044095197	Subarray start row	0	257
Pointing Dec	53.503132	53.5116017355318	Subarray row count	1024	512
Pointing Roll	130.884771	131.076353834912	Alternating exposures requested	N	N
SIM focus pos (mm)	-0.684267	-0.6828225247311905	Primary exposure time	0.000000	1.8
SIM defocus (mm)	0	0.001444936568705701			
SIM translation stage pos (mm)	-190.132523	-190.1400660498719			
SIM translation stage offset (mm)	0	0.00754346686406393			
Observation start time	159842247.184000	159841259.55409			
Observation start date	2003-01-25T00:36:23	2003-01-25T00:20:59			
Observation end time	159890247.184000	159890619.45615			
Observation end date	2003-01-25T13:56:23	2003-01-25T14:03:39			
Read mode	TIMED	TIMED			

2.3 Aspect



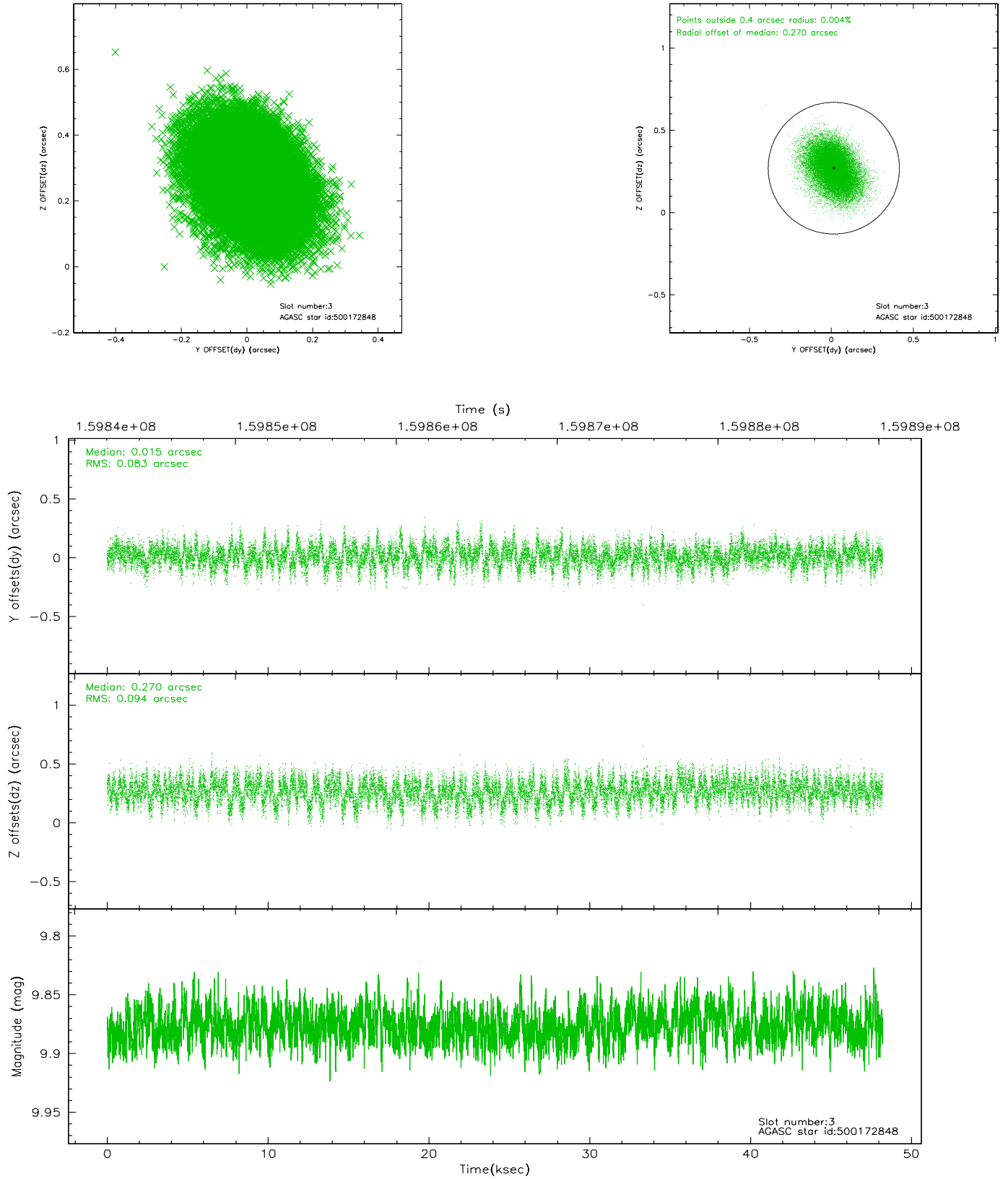


Slot Statistics

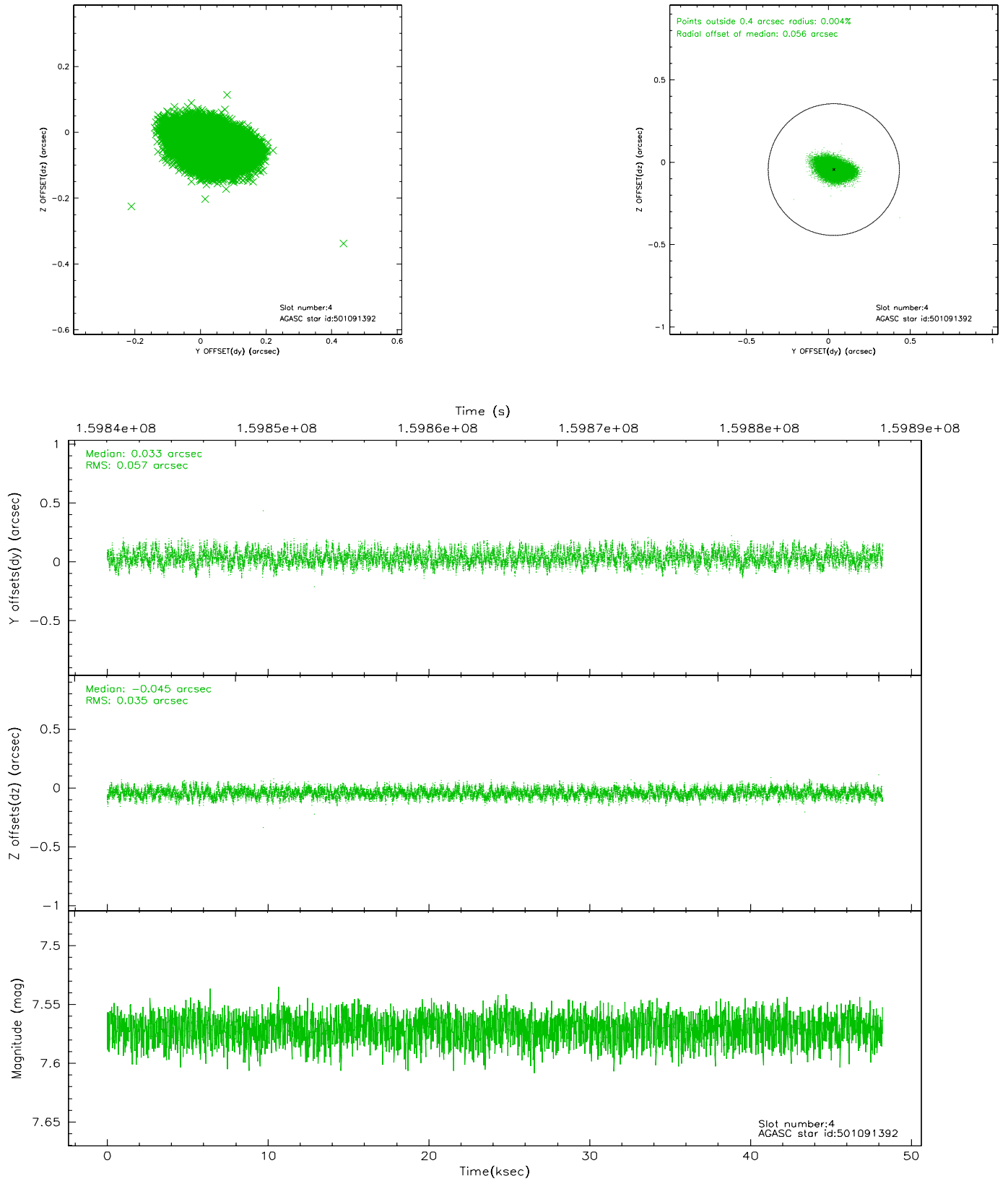
slot	status	id	mag	n_pts	med_dy	med_dz	dr1	dr2	ra	dec	mean_y	mean_z
0	FID	ACIS-S-2	7.12	11764	-0.009	0.011	0.007	0.012	0.000000	0.000000	-755.72	-1728.49
1	FID	ACIS-S-4	7.20	11762	-0.034	0.001	0.007	0.013	0.000000	0.000000	2157.53	180.00
2	FID	ACIS-S-5	7.24	11765	0.011	-0.003	0.007	0.012	0.000000	0.000000	-1808.56	173.65
3	GUIDE	500172848	9.88	23508	0.015	0.270	0.134	0.219	159.746038	54.092437	1577.11	-1419.31
4	GUIDE	501091392	7.57	23528	0.033	-0.045	0.071	0.117	160.324146	52.970595	-2293.25	271.60
5	GUIDE	501092928	7.78	23526	-0.088	-0.028	0.069	0.111	160.280177	53.627423	-432.09	-1189.55
6	GUIDE	500177128	7.86	23527	0.046	-0.049	0.063	0.102	158.210933	53.586826	2373.41	2228.96
7	GUIDE	500171560	10.03	22976	-0.008	-0.148	0.146	0.235	158.370452	53.405557	1660.00	2412.04

2.4 Star Slots

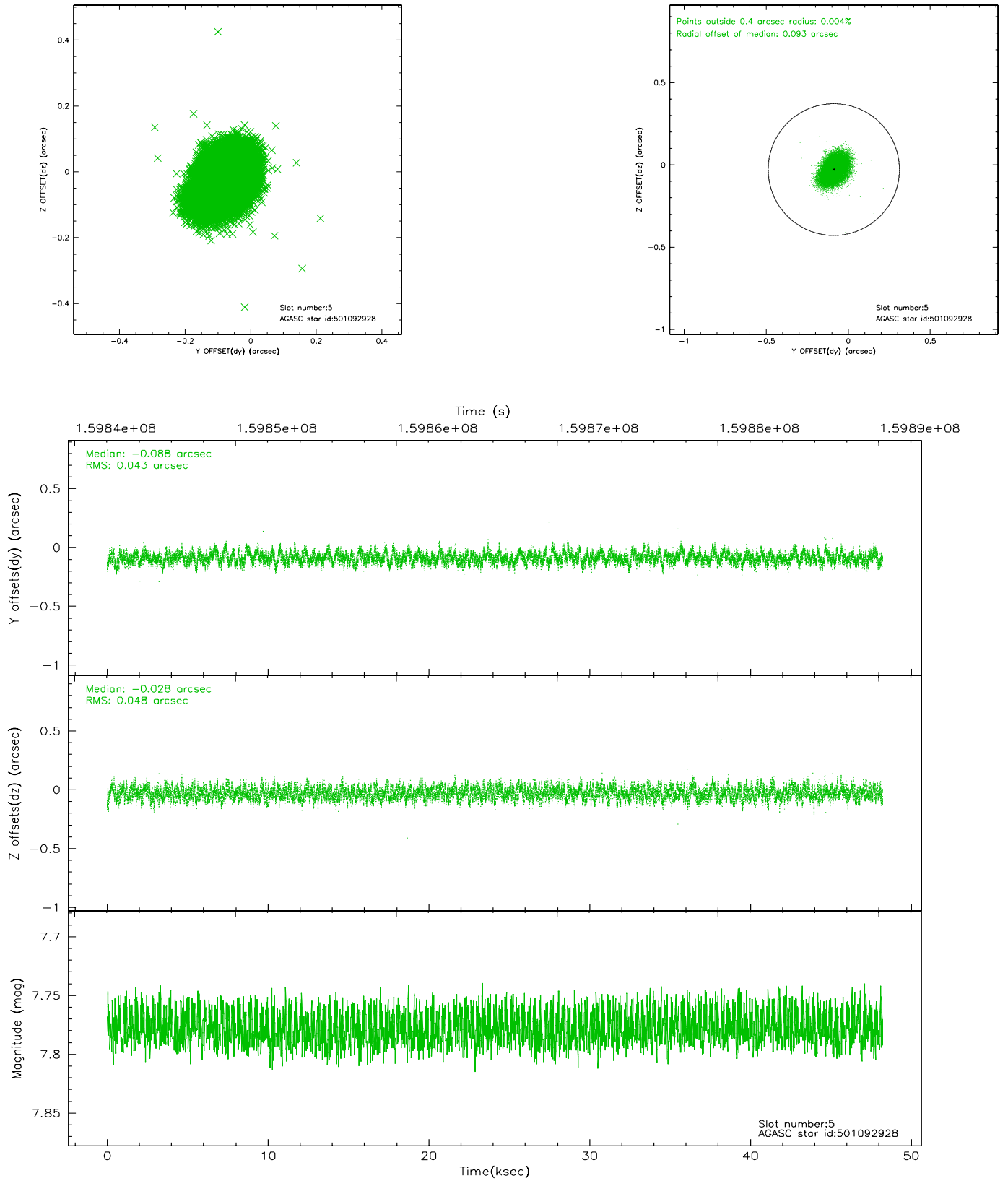
2.4.1 Slot 3



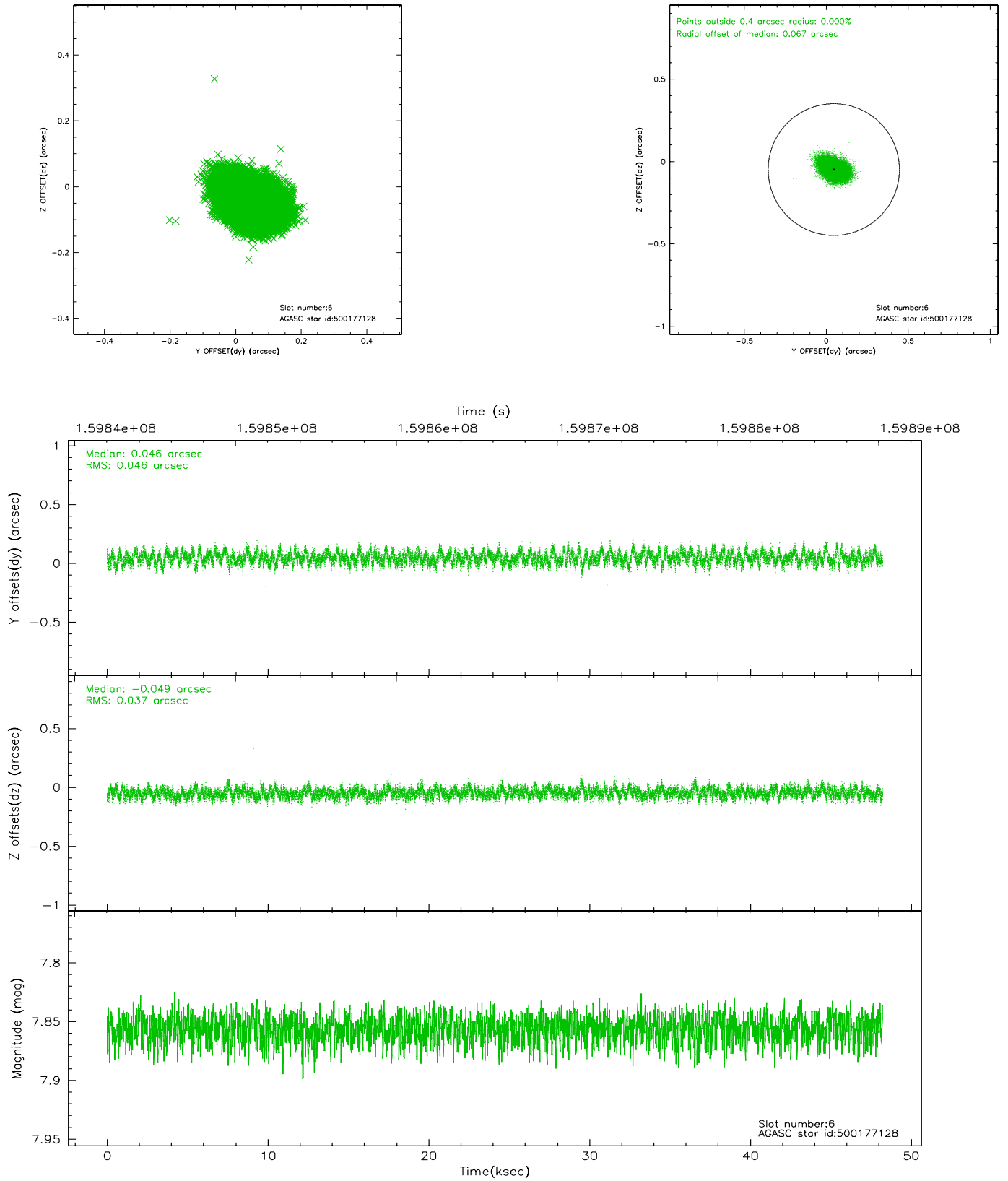
2.4.2 Slot 4



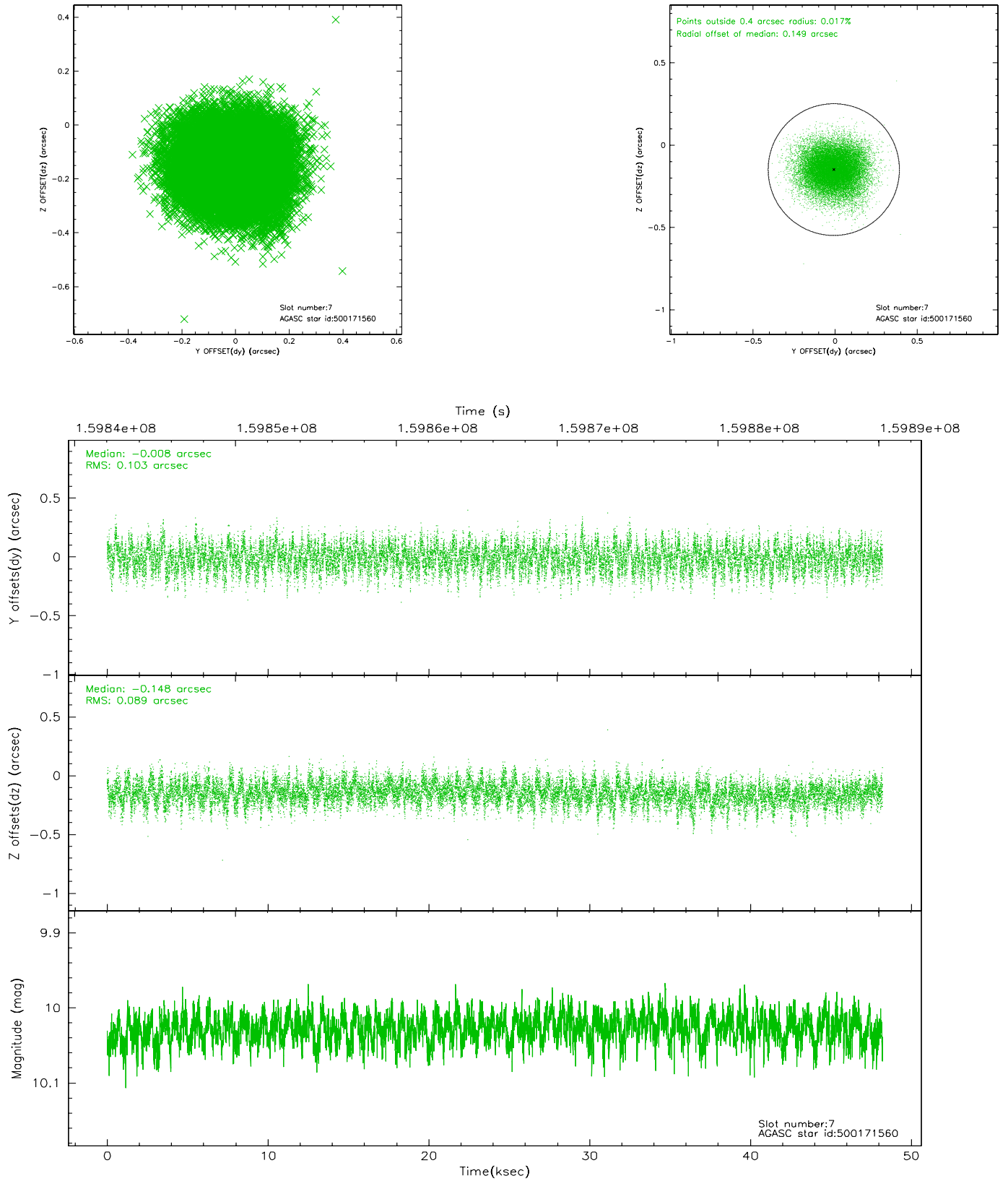
2.4.3 Slot 5



2.4.4 Slot 6

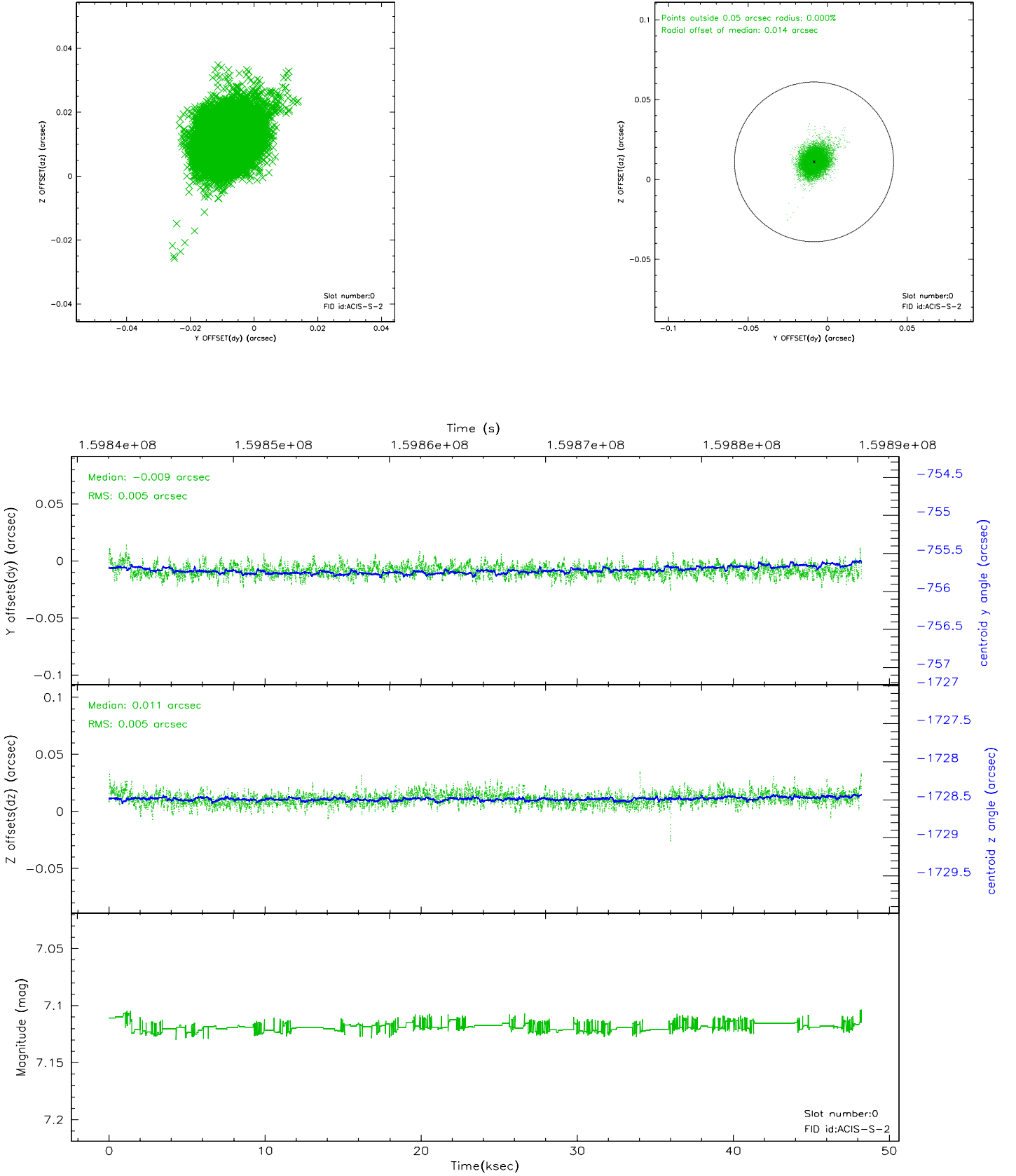


2.4.5 Slot 7

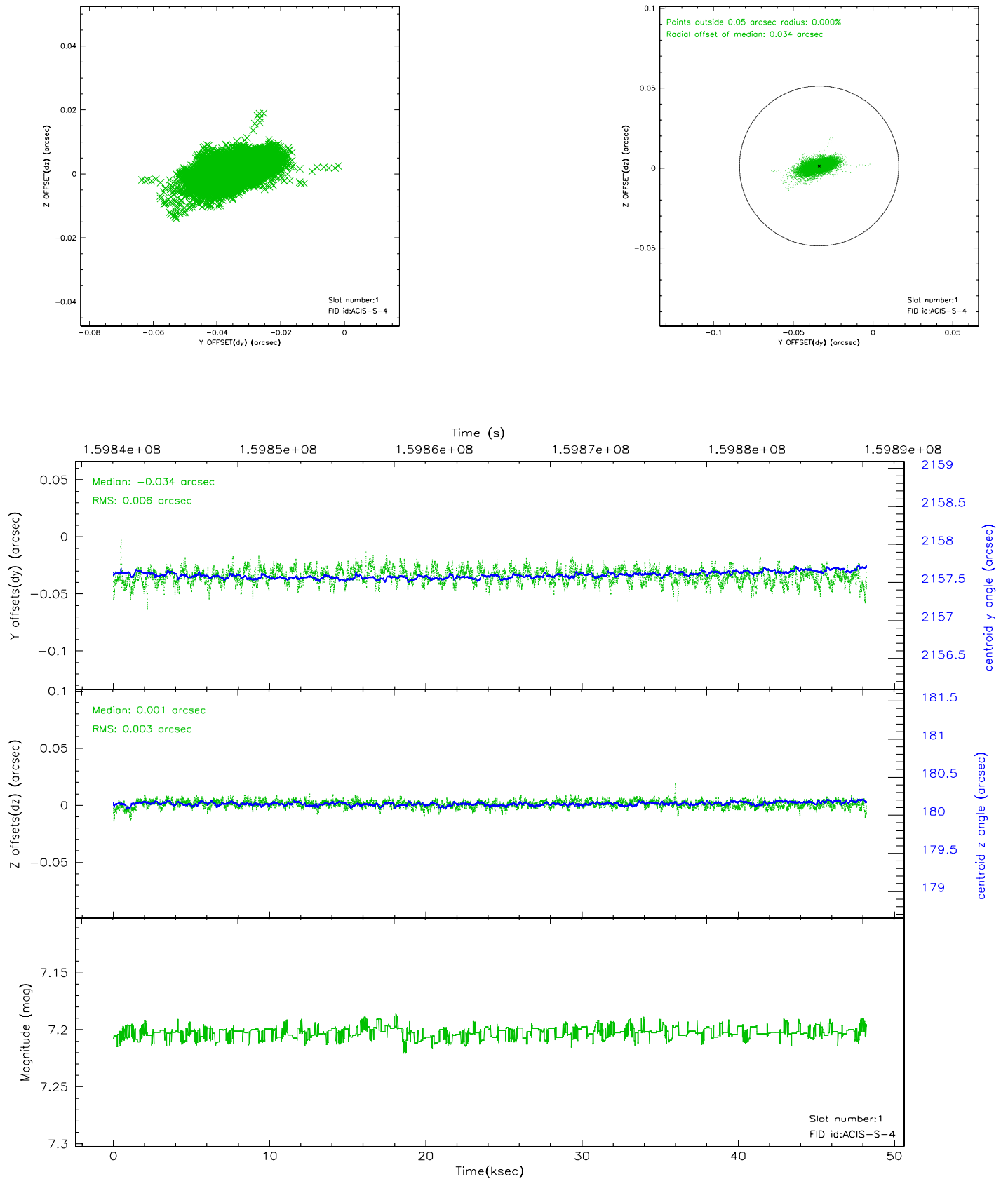


2.5 FID Slots

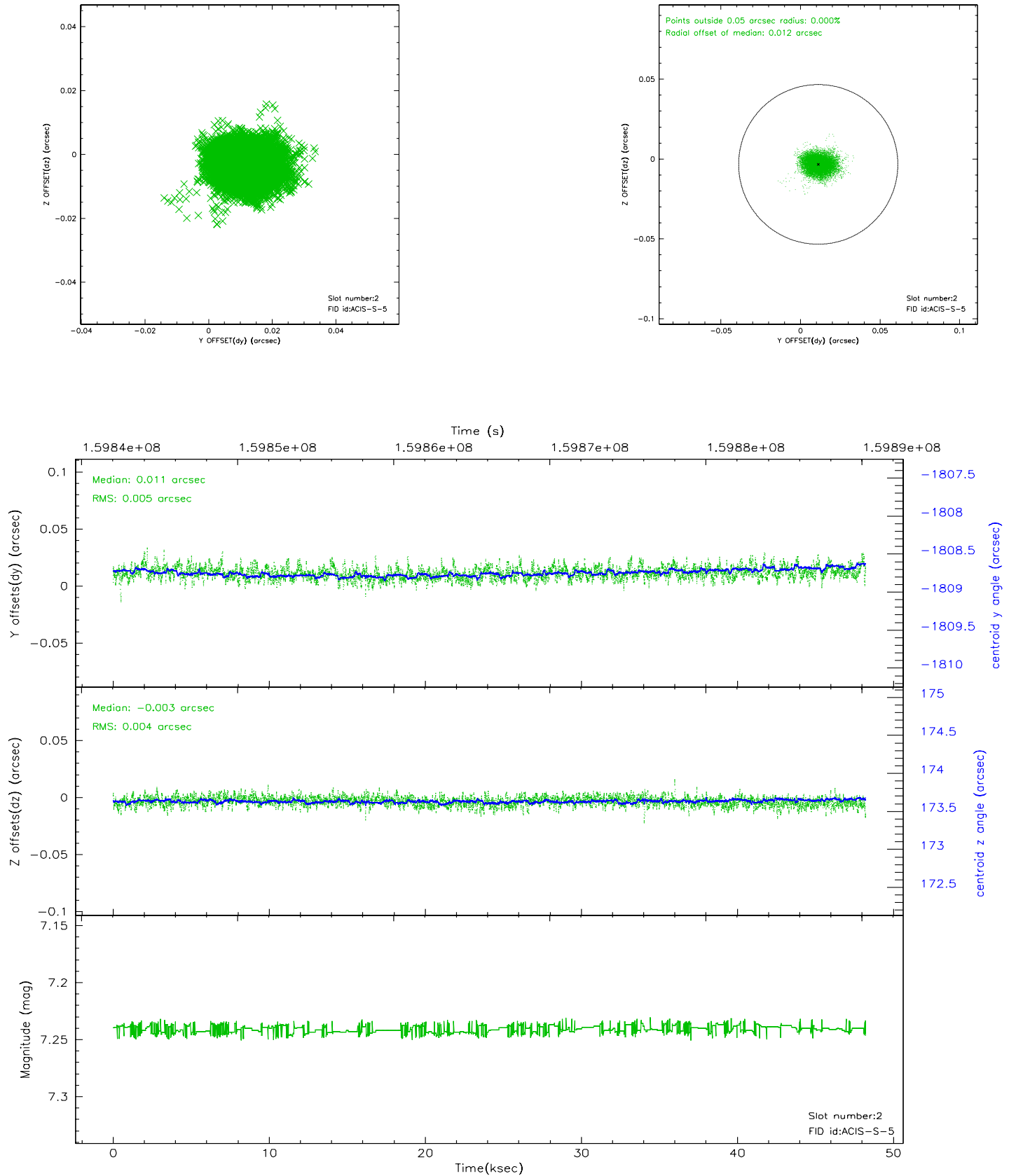
2.5.1 Slot 0



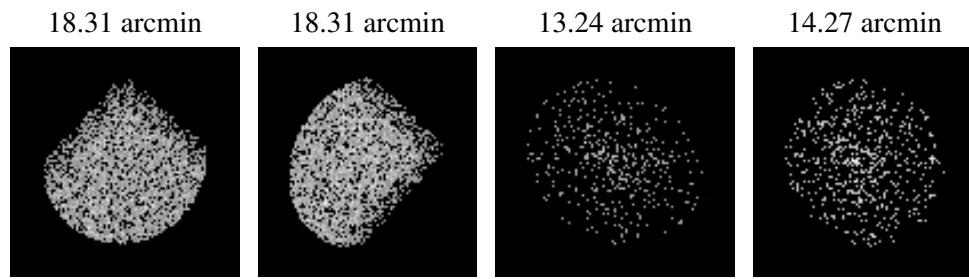
2.5.2 Slot 1



2.5.3 Slot 2



3 Point Sources



A Summary

A.1 Status

V&V Scientist	Jen Lauer
V&V Date (YYYY-MM-DD)	2006.07.19
V&V Edition	1
V&V Disposition and Status	OK
V&V Charge Time	48.228

A.2 Comments

The ACIS focal plane temperature was above calibration limits for all but the first 22 ksec of the observation. The temperature increased by more than a degree during the observation.

The ACIS spectral response calibration is less accurate at these warmer temperatures than it is at -119.7 C. Users whose science objectives depend on the most accurate spectral response (ie: fitting line-rich spectra) may notice an effect. Users whose science objectives do not depend on the most accurate spectral response should not notice an effect.