

V&V Reference Report

L2 ASCDS Version : 7.6.8.1

Observation 2929 - L2 Version 001
Chandra X-Ray Center

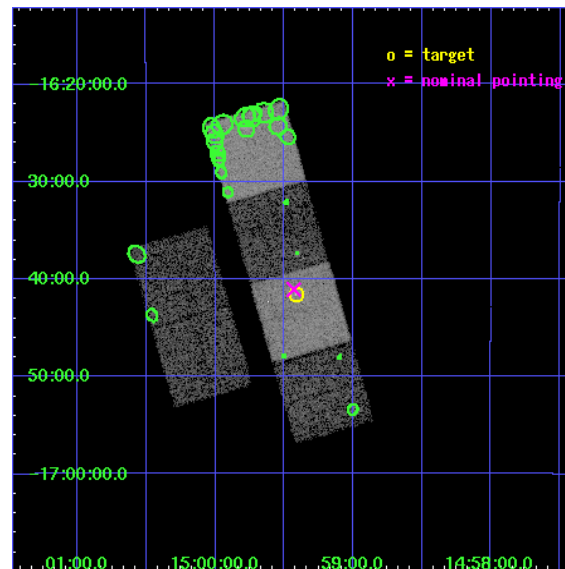
L2 Processing Date : Sep 6 2006

Contents

1	Front	2
2	OBI	3
2.1	OBI	3
2.1.1	Images	3
2.1.2	Bias	3
2.1.3	Parameters	4
2.1.4	Events	4
2.2	Compared Parameters	5
2.3	Aspect	6
2.4	Star Slots	9
2.4.1	Slot 3	9
2.4.2	Slot 4	10
2.4.3	Slot 5	11
2.4.4	Slot 6	12
2.4.5	Slot 7	13
2.5	FID Slots	14
2.5.1	Slot 0	14
2.5.2	Slot 1	15
2.5.3	Slot 2	16
3	Point Sources	17
A	Summary	18
A.1	Status	18
A.2	Comments	18

1 Front

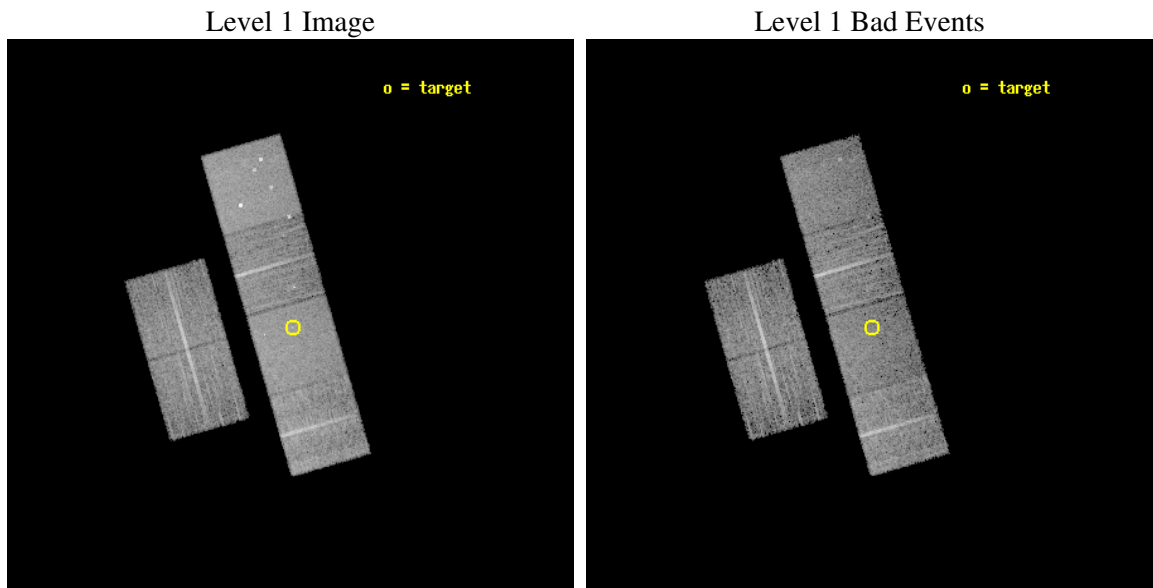
seq_num	600266
obs_id	2929
title	CHANDRA SURVEY OF GALAXIES WITH KNOWN BLACK HOLE MASSES
observer	Dr. Andrew Ptak
object	NGC 5793
dtcycle	0
cycle	P
ra_targ	224.852917
dec_targ	-16.693333
ra_nom	224.85737977829
dec_nom	-16.684642737458
roll_nom	73.930324530179
revision	2
ontime	8758.4000081569
livetime	8647.4958735783
ontime2	8758.4000081569
ontime3	8758.3978639096
ontime5	8758.4000081569
ontime6	8758.4000081569
ontime7	8758.4000081569
ontime8	8755.1157839
l2events	90016



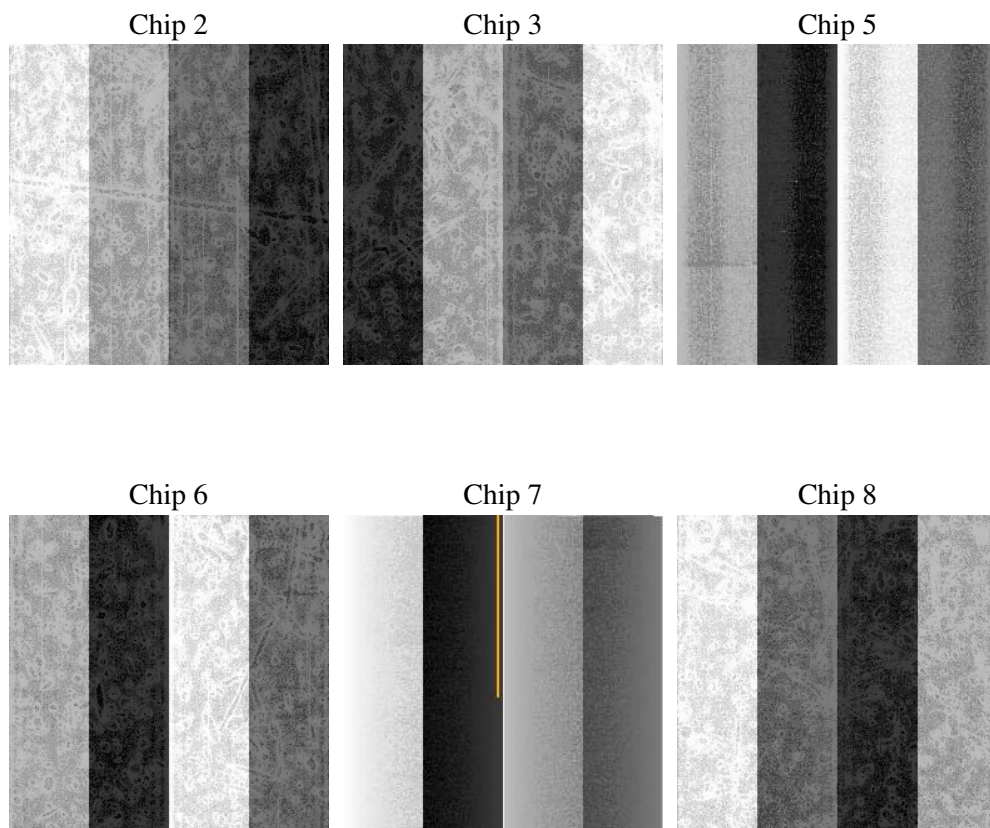
2 OBI

2.1 OBI

2.1.1 Images



2.1.2 Bias



2.1.3 Parameters

obi_num	0
ascdsver	7.6.8.1
caldbver	3.2.3
date	2006-09-06T15:58:44
revision	2

sched_exp_time	9000.000000
ontime	8760.4244045019
ontime2	8760.4244244099
ontime3	8760.4244045019
ontime5	8760.4244045019
ontime6	8760.4244045019
ontime7	8760.4244045019
ontime8	8757.1833644956
l1events	422239

2.1.4 Events

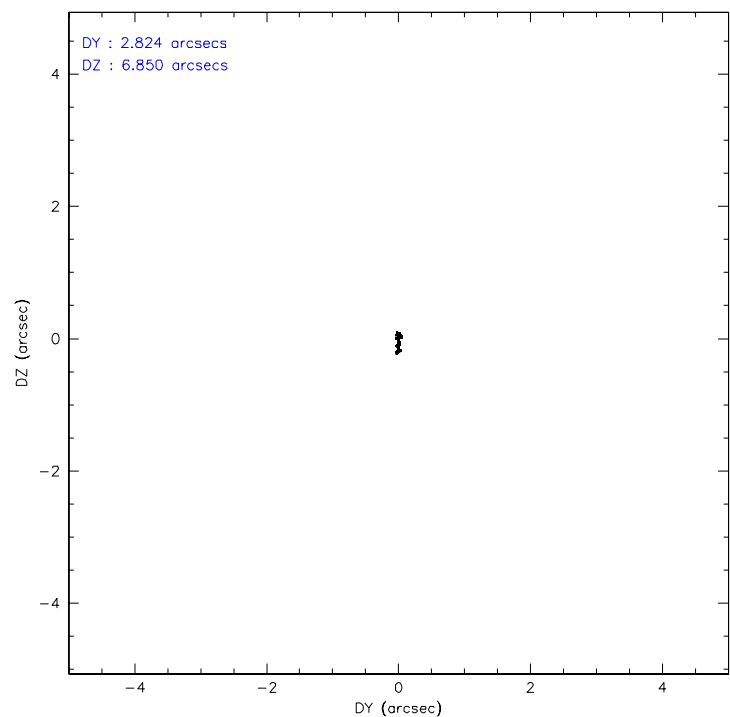
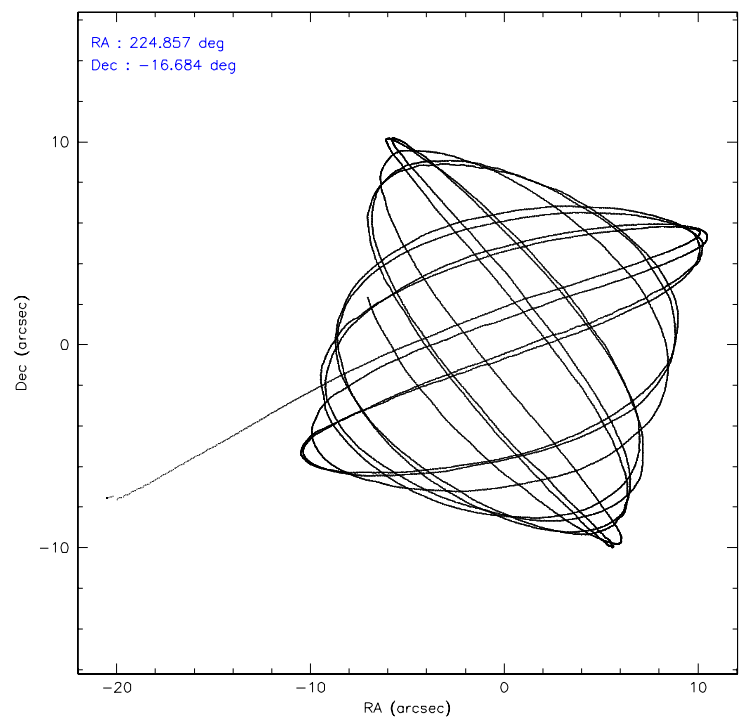
	ccd 2	ccd 3	ccd 5	ccd 6	ccd 7	ccd 8
level 1 events	59571	58958	86171	61394	77903	78242
rejected events	52666	52141	47065	53794	47287	62548
rejected %	88%	88%	54%	87%	60%	79%

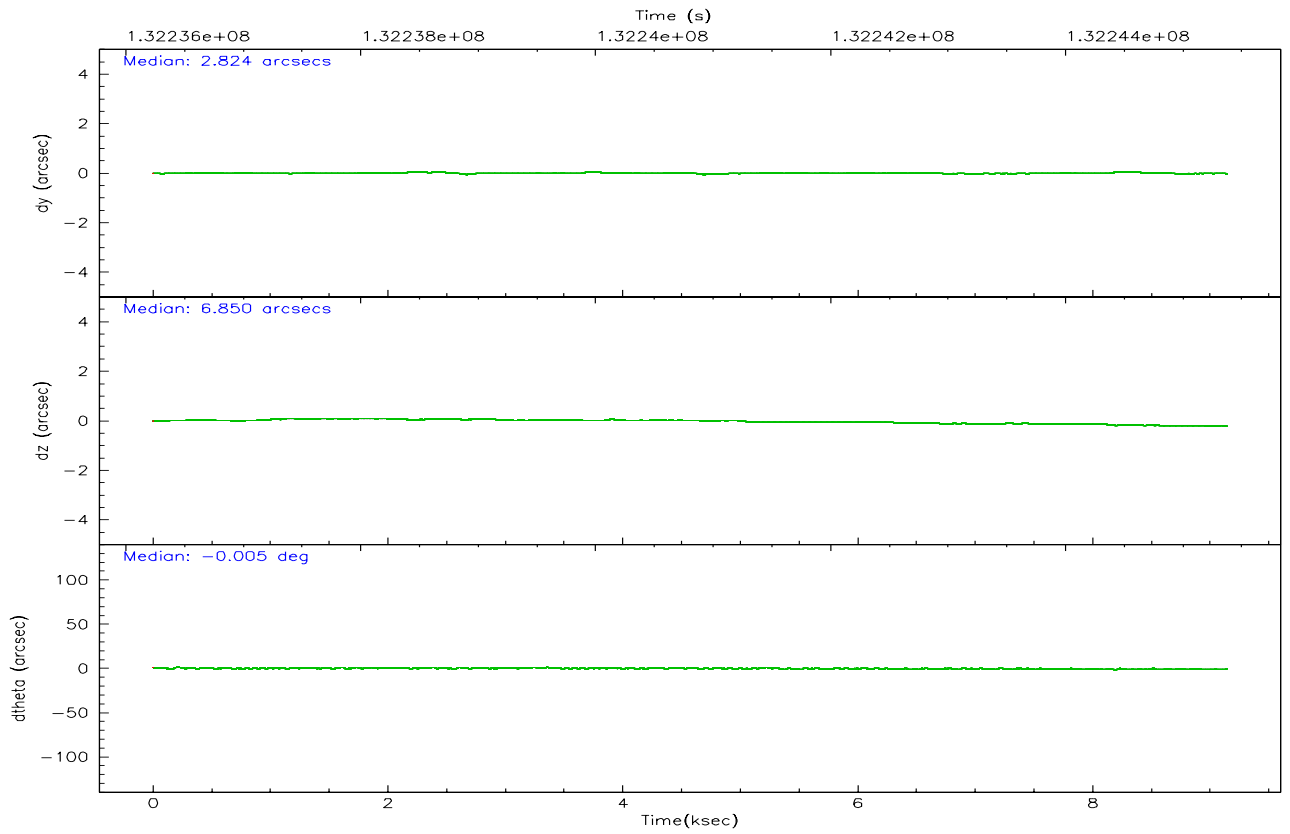
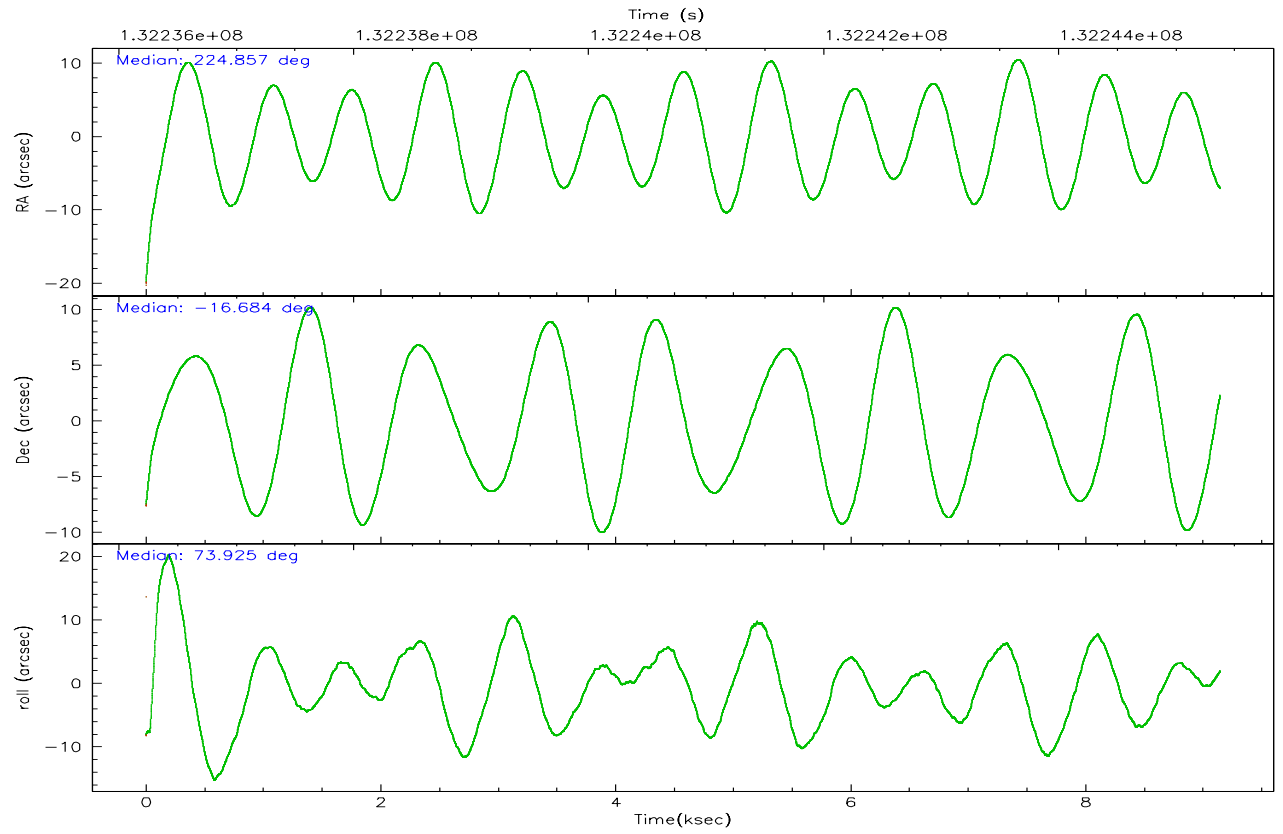
	ccd 2	ccd 3	ccd 5	ccd 6	ccd 7	ccd 8
grade 0 events	3013	3017	4491	3426	2100	5195
	5%	5%	5%	5%	2%	6%
grade 1 events	31	33	119	31	50	76
	0%	0%	0%	0%	0%	0%
grade 2 events	1516	1326	11770	1444	7660	3256
	2%	2%	13%	2%	9%	4%
grade 3 events	625	612	895	684	1678	1800
	1%	1%	1%	1%	2%	2%
grade 4 events	631	657	859	722	1653	1658
	1%	1%	0%	1%	2%	2%
grade 5 events	2100	2181	4065	2569	5109	3193
	3%	3%	4%	4%	6%	4%
grade 6 events	1120	1210	21104	1325	17532	3790
	1%	2%	24%	2%	22%	4%
grade 7 events	50535	49922	42868	51193	42121	59274
	84%	84%	49%	83%	54%	75%

2.2 Compared Parameters

Parameter	Planned	Actual	Parameter	Planned	Actual
Instrument	ACIS	ACIS	Obspar format version number	6	6
Detector	ACIS-235678	ACIS-235678	Obspar file type	PREDICTED	ACTUAL
Grating	NONE	NONE	Obspar update status	NONE	UPDATED
Data mode	FAINT	FAINT	On-chip summing requested	N	N
Observation mode	POINTING	POINTING	Subarray requested	NONE	NONE
Pointing RA	224.864589	224.8573797782933	Alternating exposures requested	N	N
Pointing Dec	-16.710993	-16.68464273745815	Primary exposure time	0.000000	3.2
Pointing Roll	73.775797	73.93032453017857			
SIM focus pos (mm)	-0.684267	-0.6828225247311905			
SIM defocus (mm)	0	0.001444936568705701			
SIM translation stage pos (mm)	-190.132523	-190.1425803651734			
SIM translation stage offset (mm)	0	0.01005778216563158			
Observation start time	132236378.184000	132235348.02898			
Observation start date	2002-03-11T12:18:34	2002-03-11T12:02:28			
Observation end time	132245378.184000	132246011.10442			
Observation end date	2002-03-11T14:48:34	2002-03-11T15:00:11			
Read mode	TIMED	TIMED			

2.3 Aspect



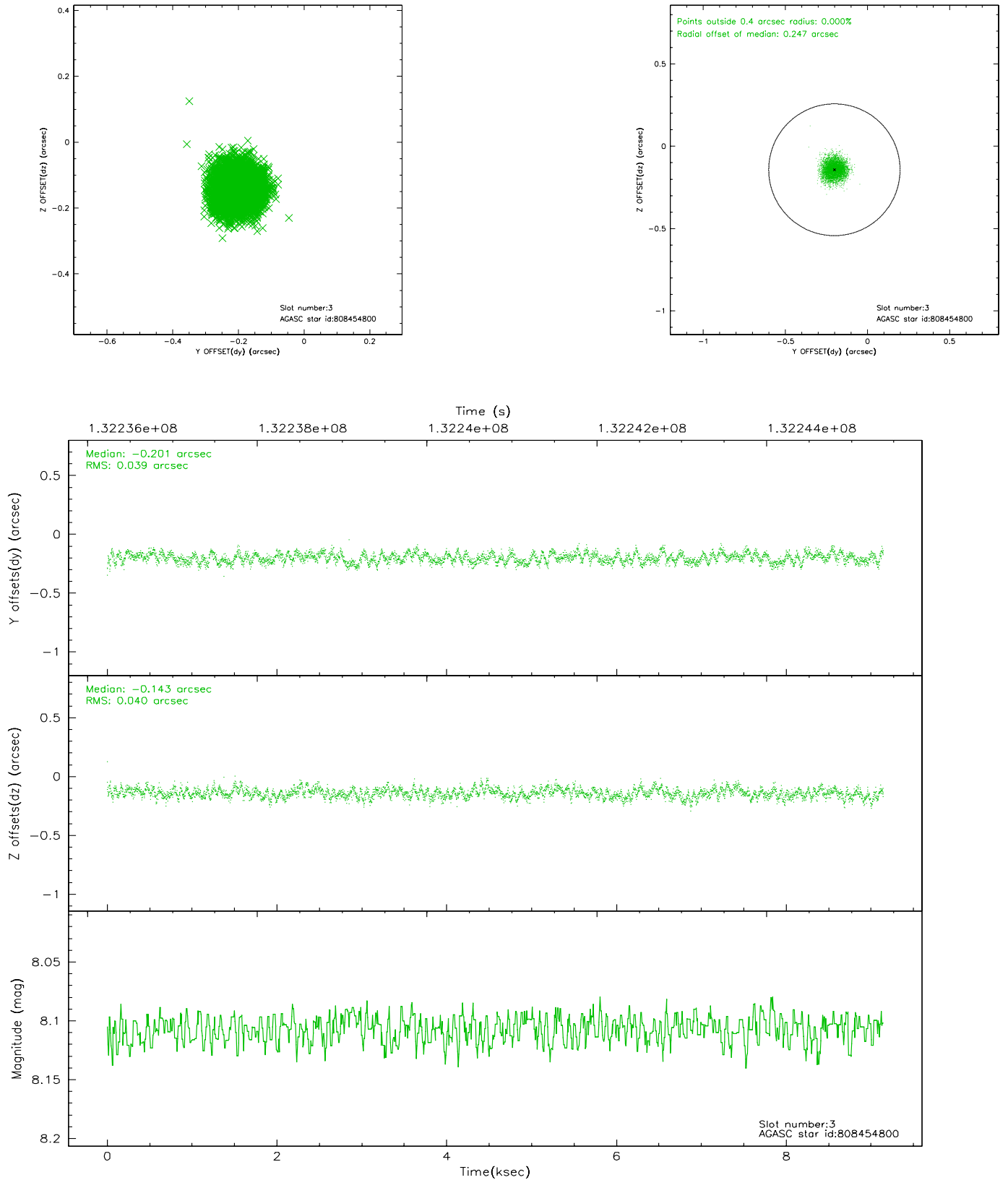


Slot Statistics

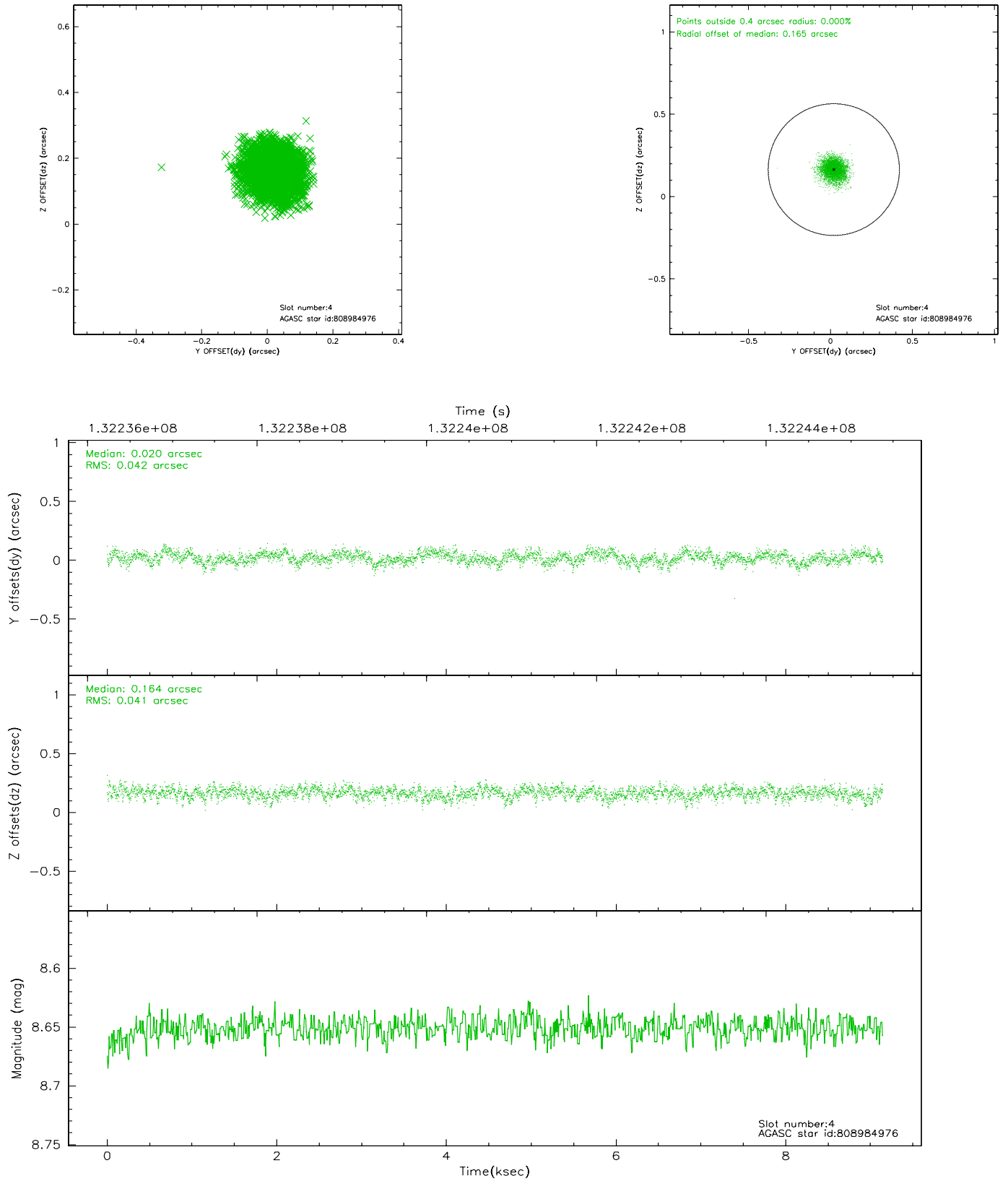
slot	status	id	mag	n_pts	med_dy	med_dz	dr1	dr2	ra	dec	mean_y	mean_z
0	FID	ACIS-S-2	7.11	2231	-0.010	0.033	0.007	0.012	0.000000	0.000000	-755.45	-1727.90
1	FID	ACIS-S-4	7.20	2231	-0.078	-0.004	0.005	0.009	0.000000	0.000000	2157.47	179.96
2	FID	ACIS-S-5	7.24	2229	0.057	-0.021	0.007	0.011	0.000000	0.000000	-1807.48	174.25
3	GUIDE	808454800	8.11	4461	-0.201	-0.143	0.060	0.094	224.408644	-16.411221	593.64	1812.87
4	GUIDE	808984976	8.65	4462	0.020	0.164	0.062	0.102	225.070619	-17.020295	-871.62	-991.67
5	GUIDE	808984880	8.84	4459	0.054	0.268	0.075	0.119	225.371506	-17.032226	-625.47	-1999.05
6	GUIDE	808985848	9.25	4460	0.224	-0.197	0.116	0.180	224.056405	-17.097243	-2118.28	2279.34
7	GUIDE	808459840	9.94	4453	-0.105	-0.093	0.130	0.213	224.470985	-15.973039	2167.47	2050.82

2.4 Star Slots

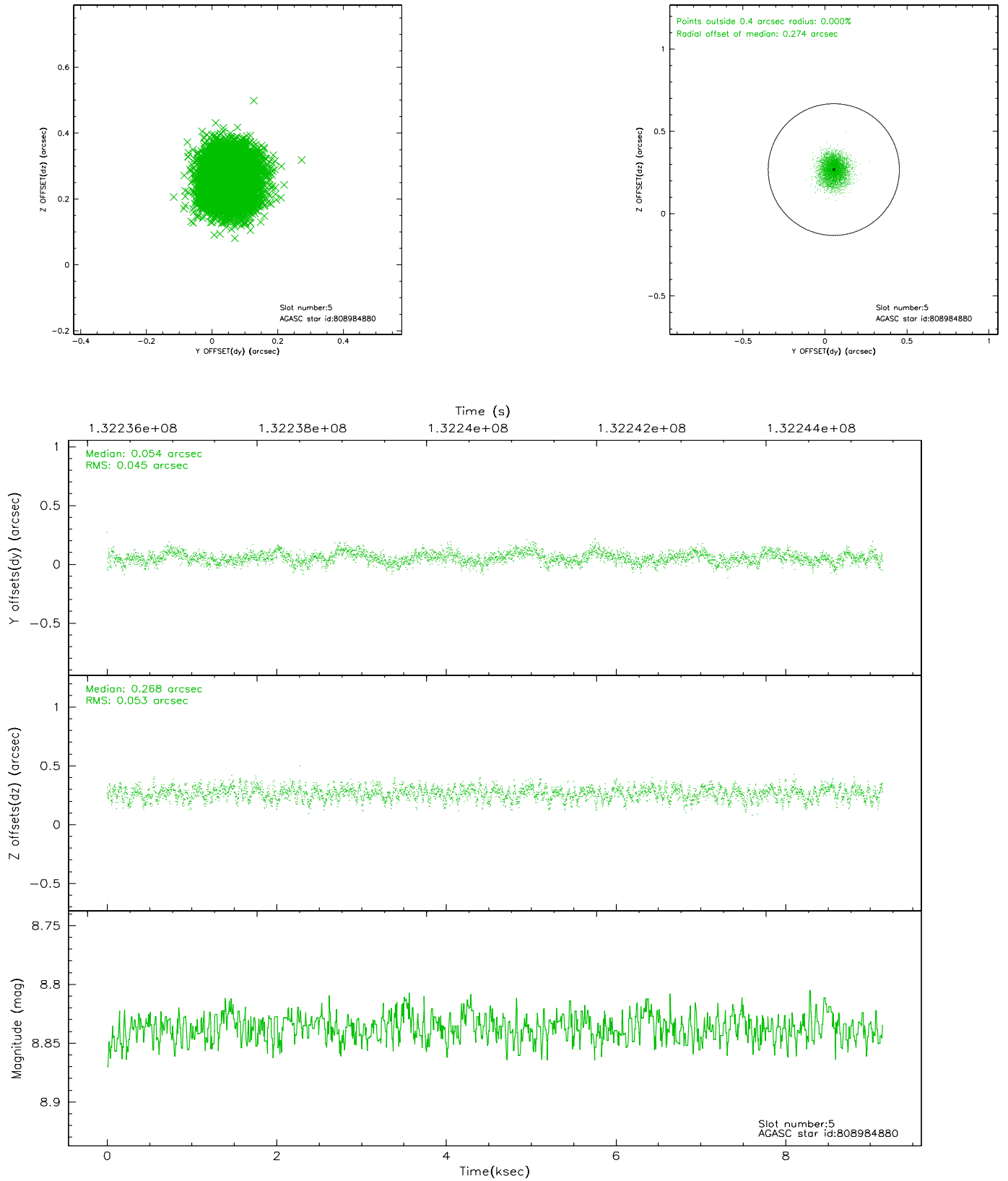
2.4.1 Slot 3



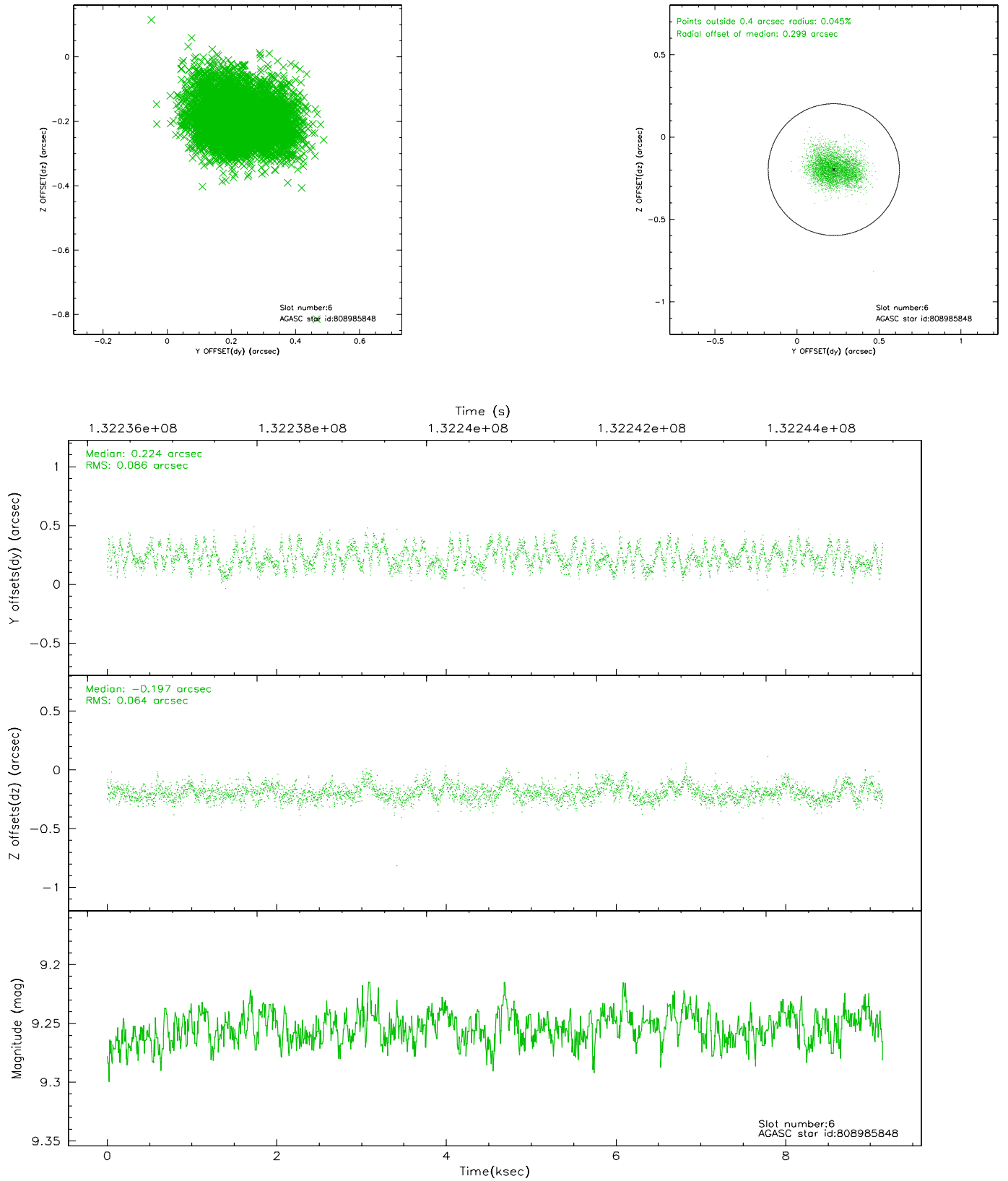
2.4.2 Slot 4



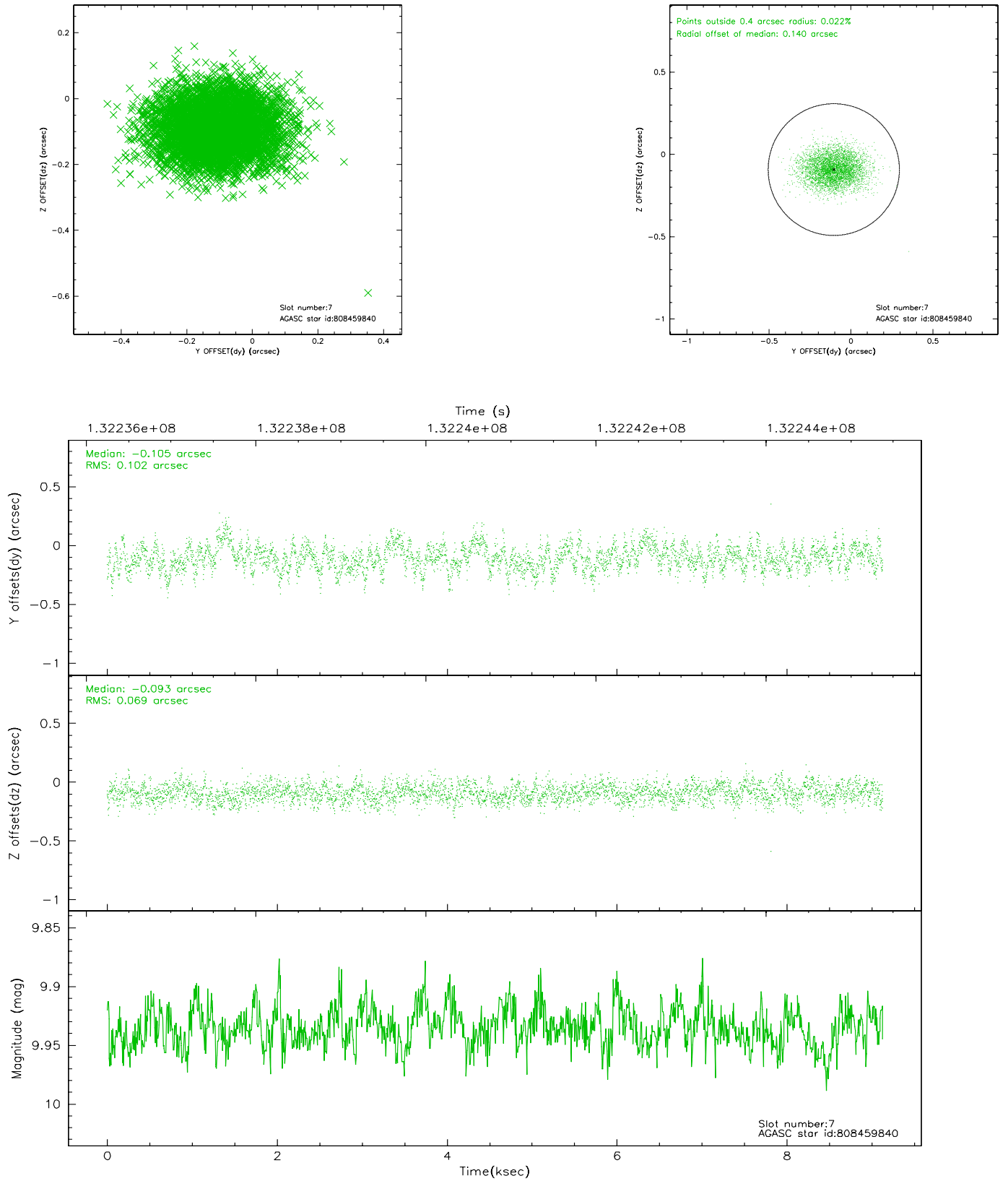
2.4.3 Slot 5



2.4.4 Slot 6

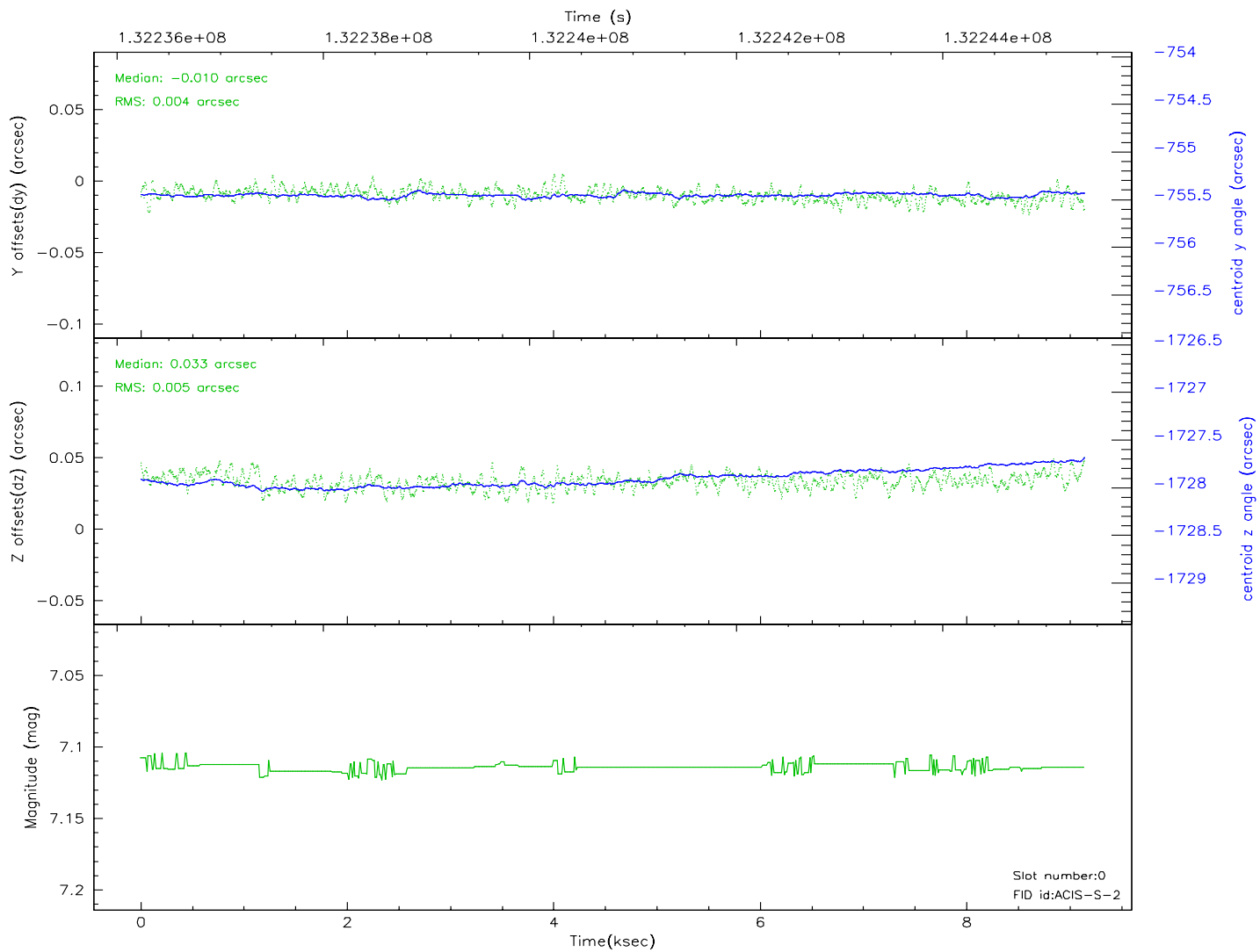
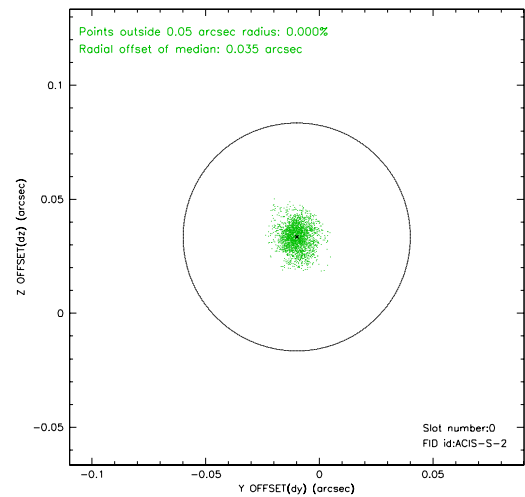
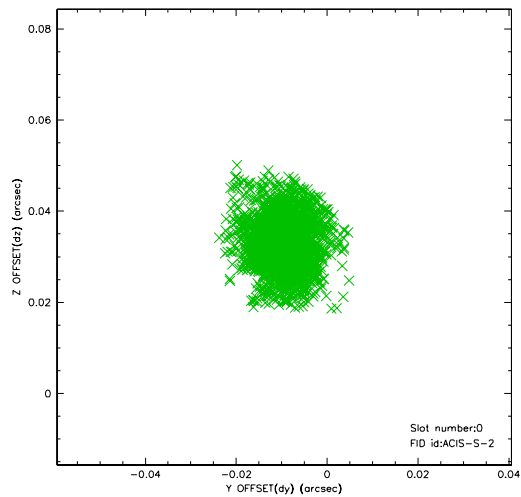


2.4.5 Slot 7

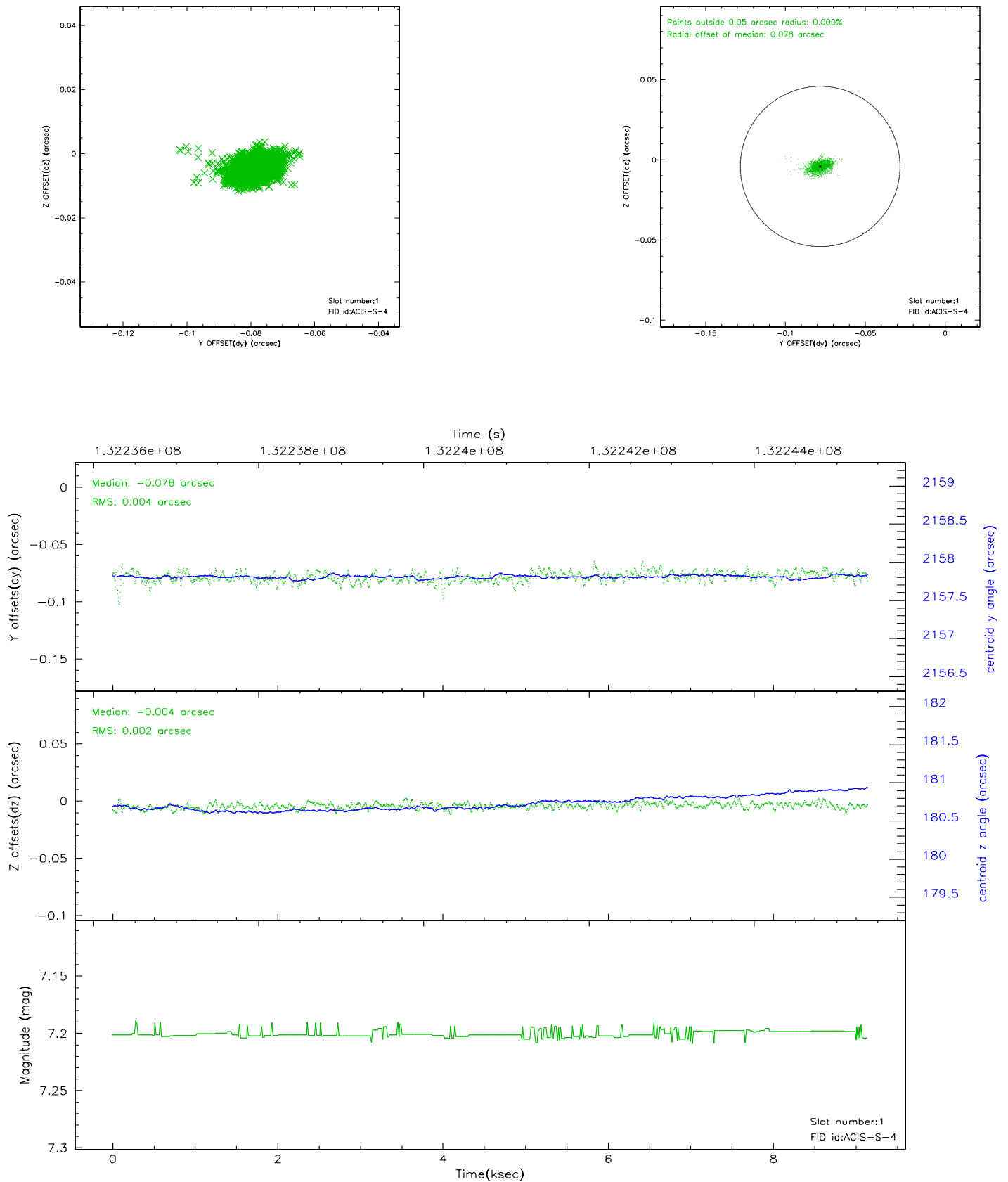


2.5 FID Slots

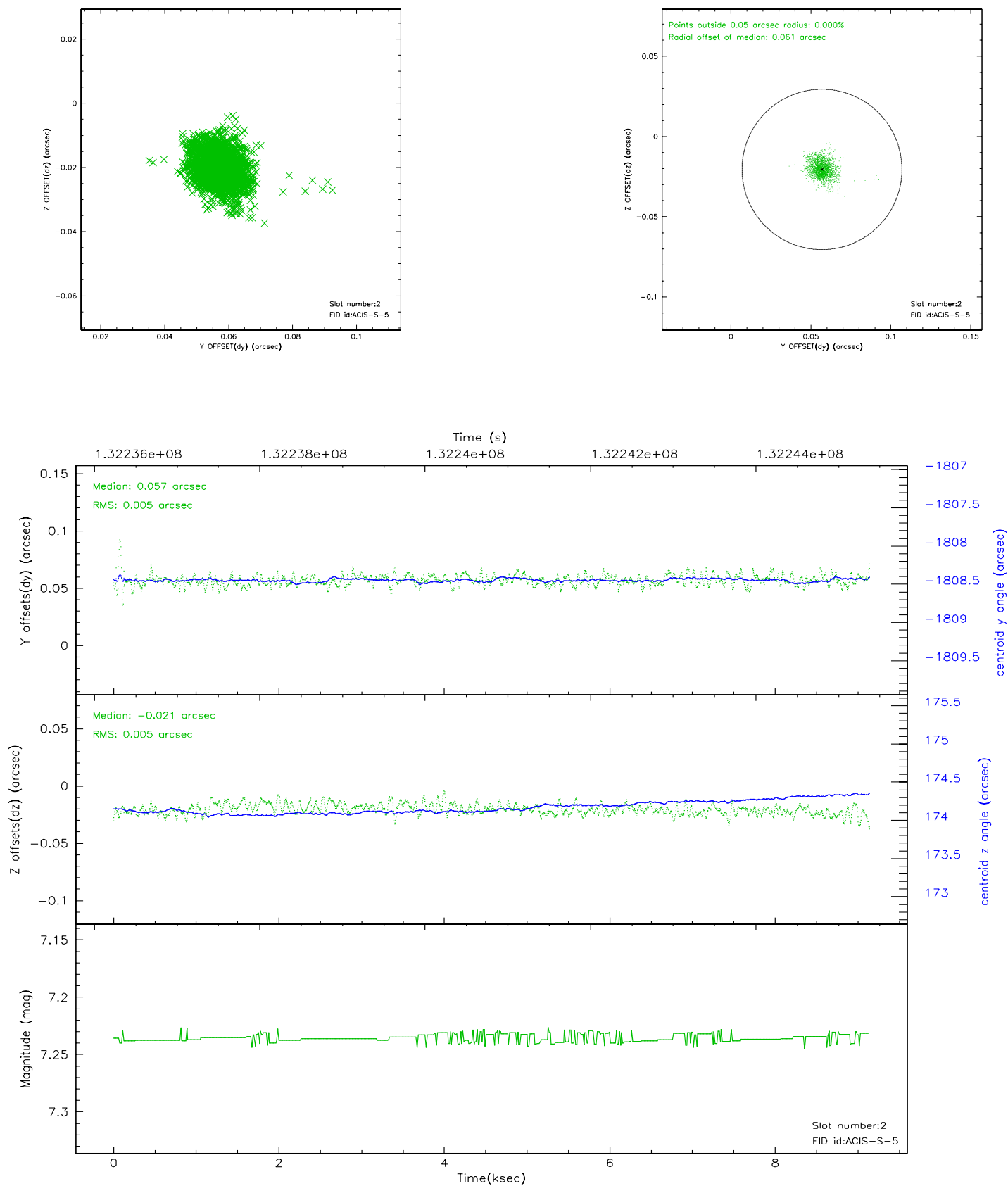
2.5.1 Slot 0



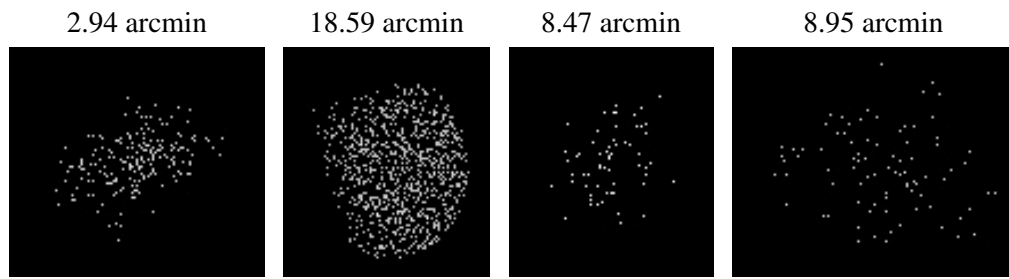
2.5.2 Slot 1



2.5.3 Slot 2



3 Point Sources



A Summary

A.1 Status

V&V Scientist	Jen Lauer
V&V Date (YYYY-MM-DD)	2006.09.06
V&V Edition	1
V&V Disposition and Status	OK
V&V Charge Time	8.758

A.2 Comments