

# V&V Reference Report

## L2 ASCDS Version : 7.6.10

Observation 2679 - L2 Version 001  
Chandra X-Ray Center

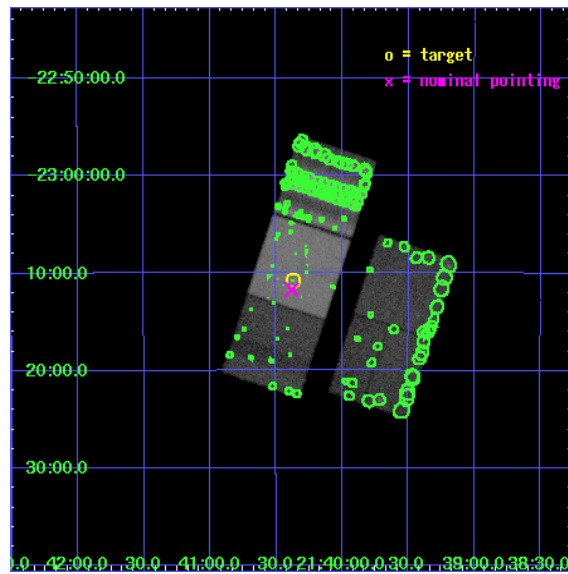
L2 Processing Date : Jan 12 2007

## Contents

<b>1</b>	<b>Front</b>	<b>2</b>
<b>2</b>	<b>OBI</b>	<b>3</b>
2.1	OBI . . . . .	3
2.1.1	Images . . . . .	3
2.1.2	Bias . . . . .	3
2.1.3	Parameters . . . . .	4
2.1.4	Events . . . . .	4
2.2	Compared Parameters . . . . .	5
2.3	Aspect . . . . .	6
2.4	Star Slots . . . . .	9
2.4.1	Slot 3 . . . . .	9
2.4.2	Slot 4 . . . . .	10
2.4.3	Slot 5 . . . . .	11
2.4.4	Slot 6 . . . . .	12
2.4.5	Slot 7 . . . . .	13
2.5	FID Slots . . . . .	14
2.5.1	Slot 0 . . . . .	14
2.5.2	Slot 1 . . . . .	15
2.5.3	Slot 2 . . . . .	16
<b>3</b>	<b>Point Sources</b>	<b>17</b>
<b>A</b>	<b>Summary</b>	<b>18</b>
A.1	Status . . . . .	18
A.2	Comments . . . . .	18

# 1 Front

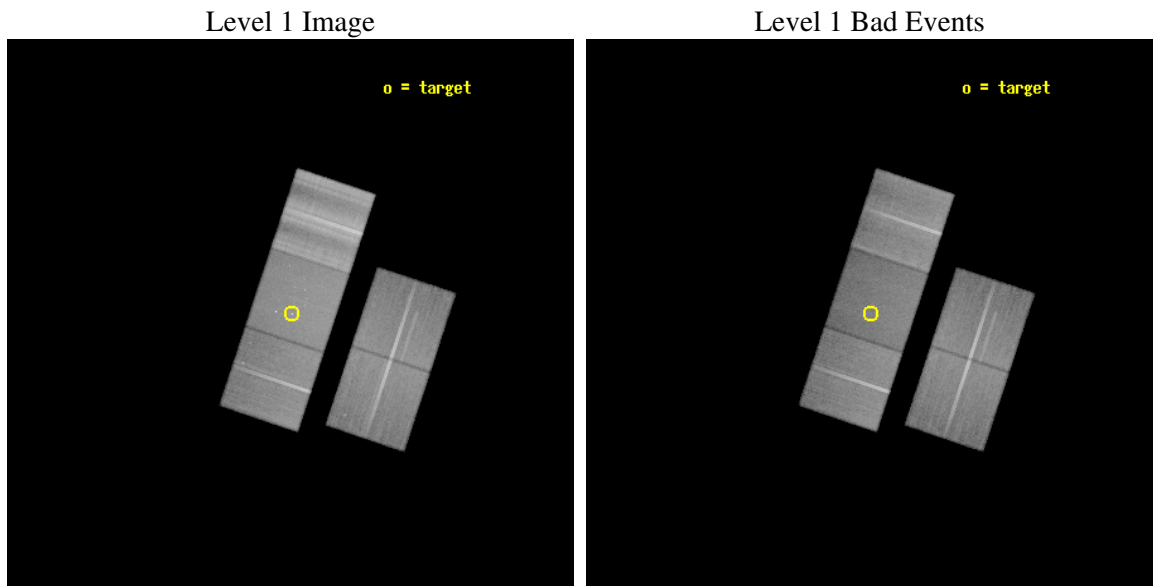
seq_num	300080
obs_id	2679
title	RESOLVING THE COMPACT BINARY DISTRIBUTION IN THE CENTRAL HALF ARCMIN OF THE COLLAPSED-CORE GLOBULAR CLUSTER M30
observer	Dr. Haldan Cohn
object	NGC 7099
dtcycle	0
cycle	P
ra_targ	325.091667
dec_targ	-23.179167
ra_nom	325.09526503781
dec_nom	-23.19465576757
roll_nom	288.3755690922
revision	3
ontime	50089.799903691
livetime	49435.339792375
ontime2	50089.799903691
ontime3	50089.799903691
ontime6	50083.51792334
ontime7	50089.799903691
ontime8	50086.65894343
l2events	448589



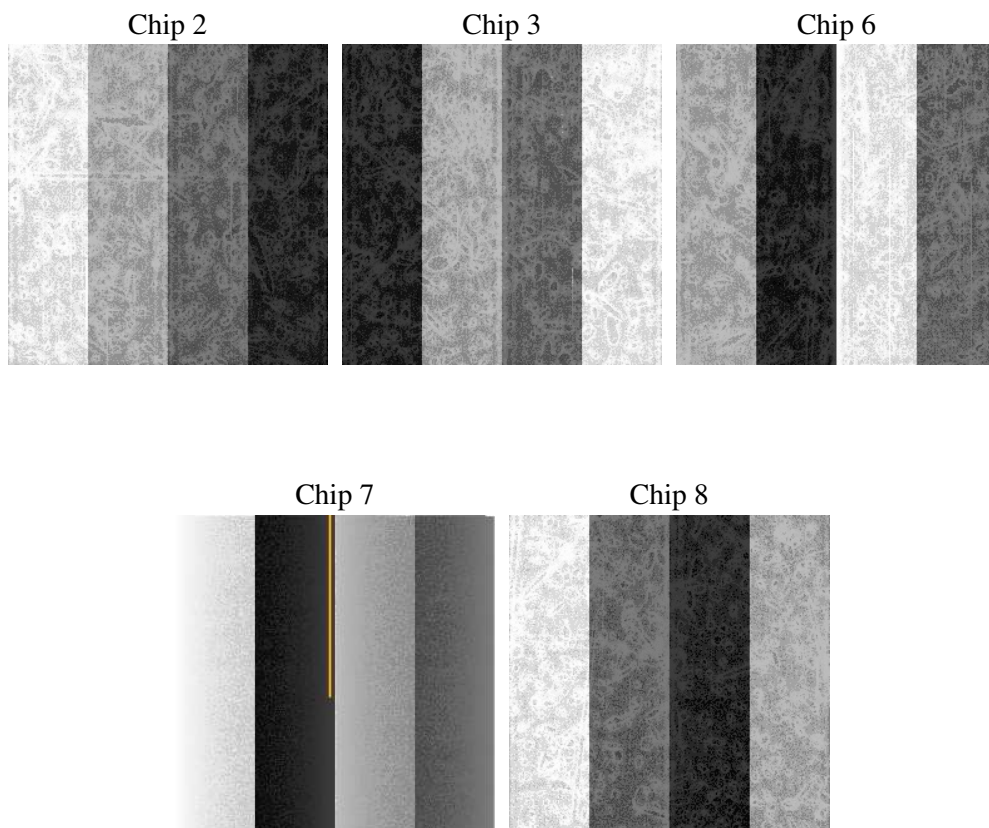
## 2 OBI

### 2.1 OBI

#### 2.1.1 Images



#### 2.1.2 Bias



### 2.1.3 Parameters

obi_num	0
ascdsver	7.6.10
caldbver	3.3.0
date	2007-01-12T10:56:01
revision	3

sched_exp_time	50000.000000
ontime	50089.799903691
ontime2	50089.799903691
ontime3	50089.799903691
ontime6	50083.51792334
ontime7	50089.799903691
ontime8	50086.65894343
l1events	2326216

### 2.1.4 Events

	ccd 2	ccd 3	ccd 6	ccd 7	ccd 8
level 1 events	392324	382613	404995	458864	687420
rejected events	339134	336523	353734	260169	401997
rejected %	86%	87%	87%	56%	58%

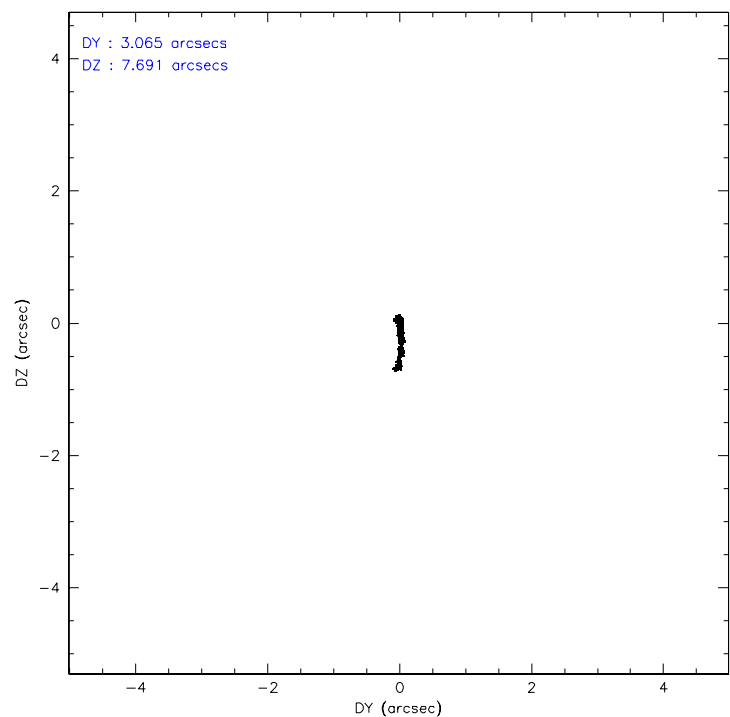
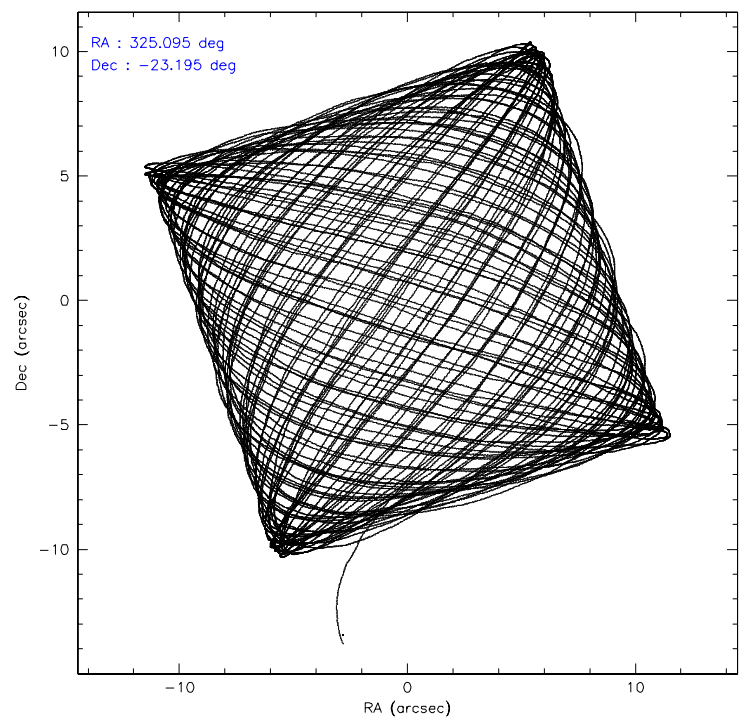
	ccd 2	ccd 3	ccd 6	ccd 7	ccd 8
grade 0 events	23331	19093	21203	20932	81891
	5%	4%	5%	4%	11%
grade 1 events	192	167	220	477	691
	0%	0%	0%	0%	0%
grade 2 events	13253	10447	12473	40526	46012
	3%	2%	3%	8%	6%
grade 3 events	3713	3888	4109	18050	46430
	0%	1%	1%	3%	6%
grade 4 events	4323	3956	4006	18030	41387
	1%	1%	0%	3%	6%
grade 5 events	11718	13381	14742	42476	21549
	2%	3%	3%	9%	3%
grade 6 events	8573	8710	9474	101166	69709
	2%	2%	2%	22%	10%
grade 7 events	327221	322971	338768	217207	379751
	83%	84%	83%	47%	55%

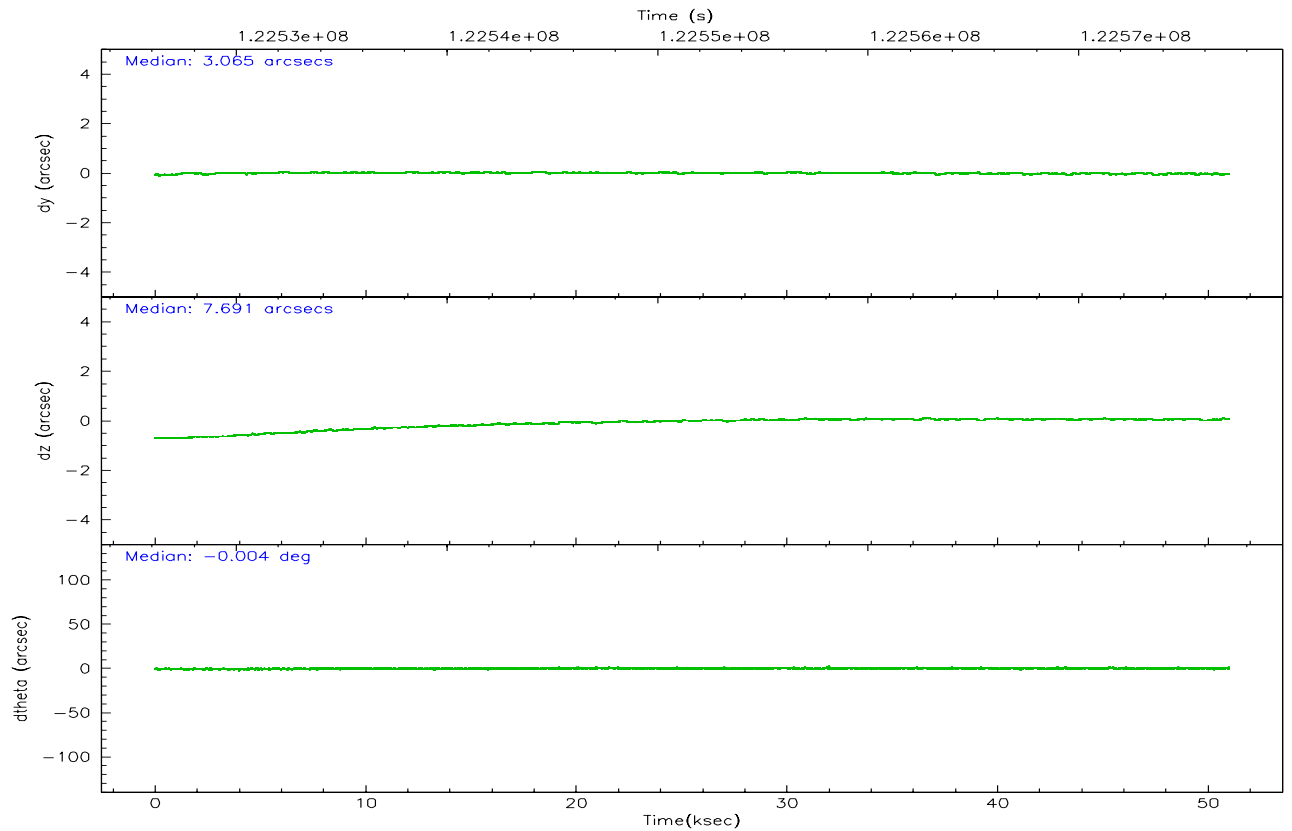
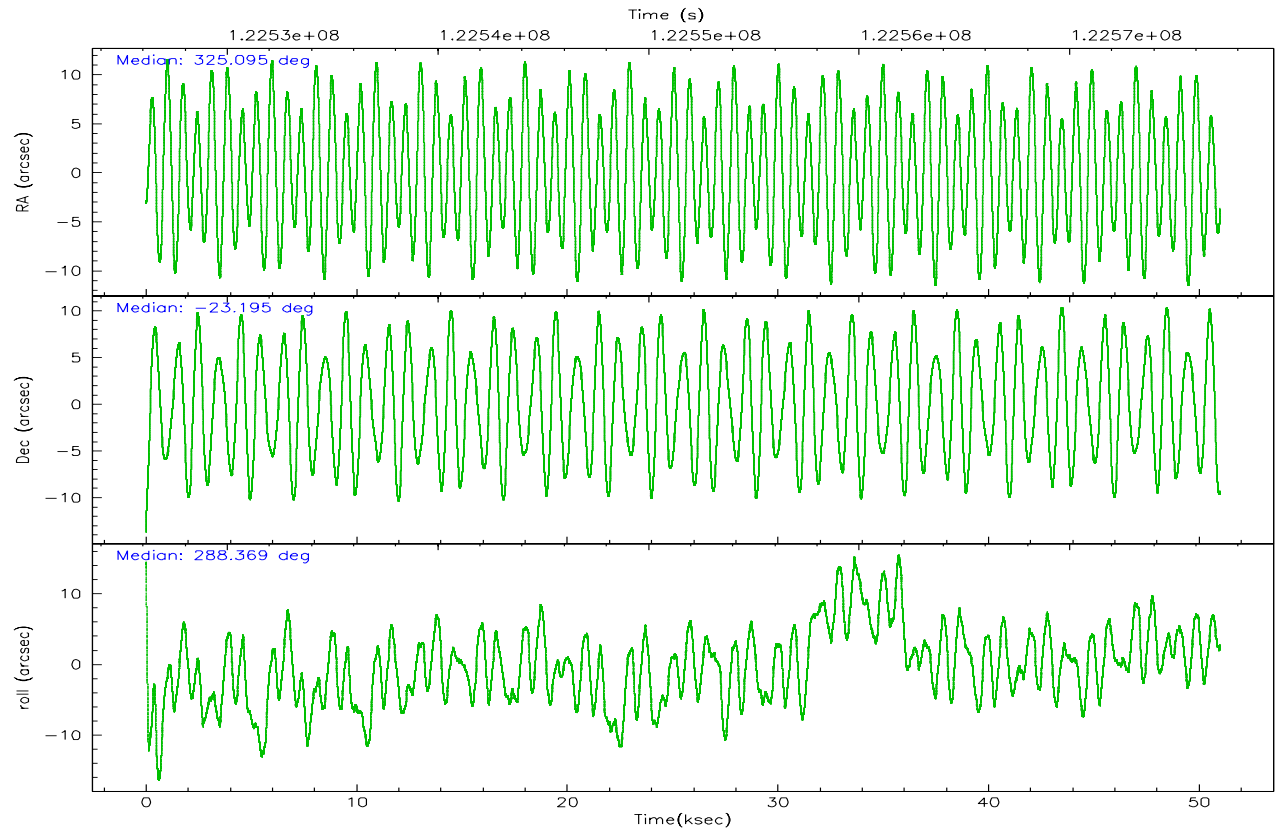


## 2.2 Compared Parameters

Parameter	Planned	Actual	Parameter	Planned	Actual
Instrument	ACIS	ACIS	Obspar format version number	6	6
Detector	ACIS-23678	ACIS-23678	Obspar file type	PREDICTED	ACTUAL
Grating	NONE	NONE	Obspar update status	NONE	UPDATED
Data mode	FAINT	FAINT	Number of optional ACIS chips dropped	0	0
Observation mode	POINTING	POINTING	On-chip summing requested	N	N
Pointing RA	325.072873	325.0952650378142	Subarray requested	NONE	NONE
Pointing Dec	-23.176782	-23.19465576756996	Alternating exposures requested	N	N
Pointing Roll	288.210118	288.375569092195	Primary exposure time	0.000000	3.1
SIM focus pos (mm)	-0.684267	-0.6828225247311905			
SIM defocus (mm)	0	0.001444936568705701			
SIM translation stage pos (mm)	-190.132523	-190.1425803651734			
SIM translation stage offset (mm)	0	0.01005778216563158			
Observation start time	122527140.184000	122525775.81348			
Observation start date	2001-11-19T03:17:56	2001-11-19T02:56:15			
Observation end time	122577140.184000	122577783.80306			
Observation end date	2001-11-19T17:11:16	2001-11-19T17:23:03			
Read mode	TIMED	TIMED			

## 2.3 Aspect



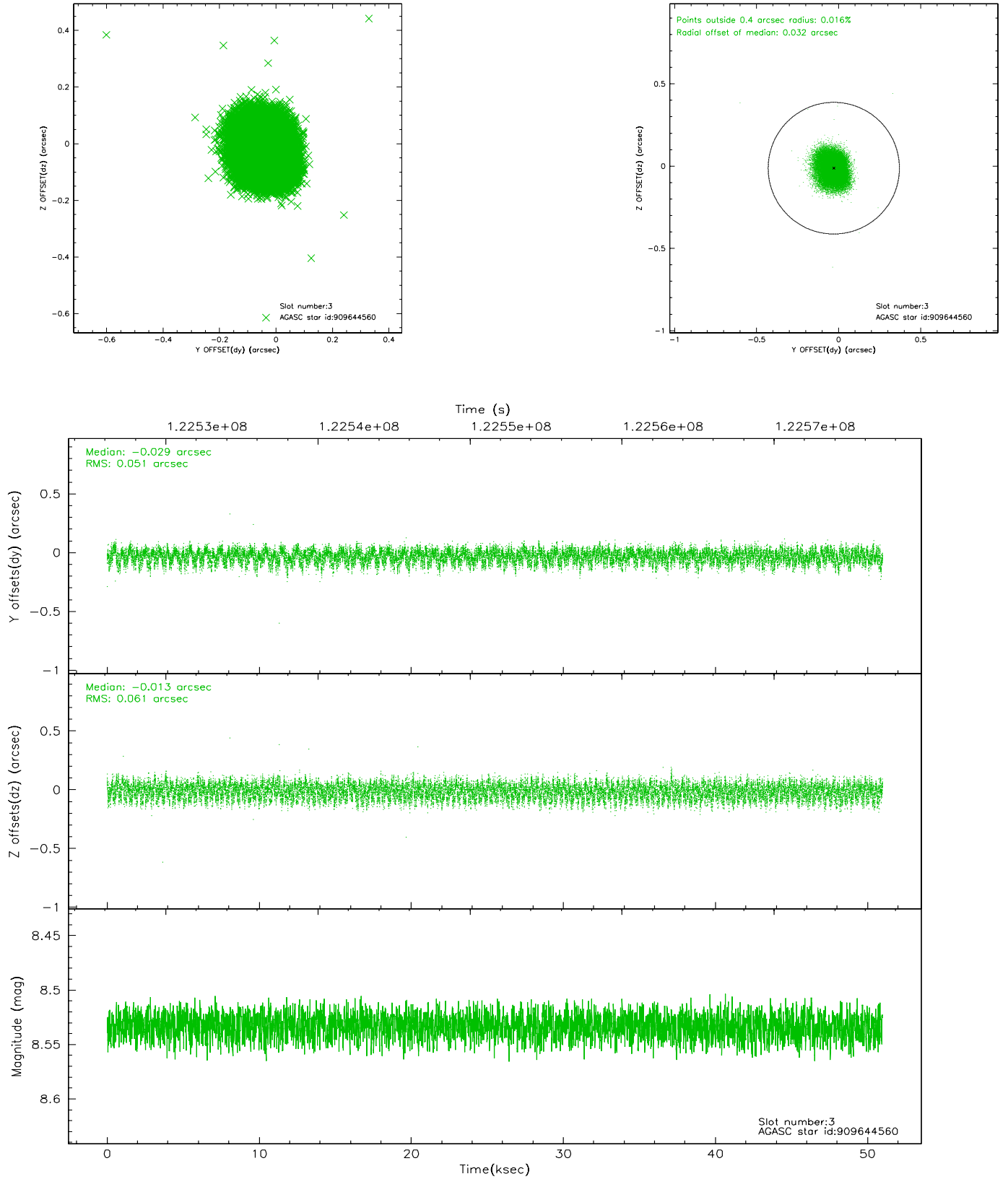


### Slot Statistics

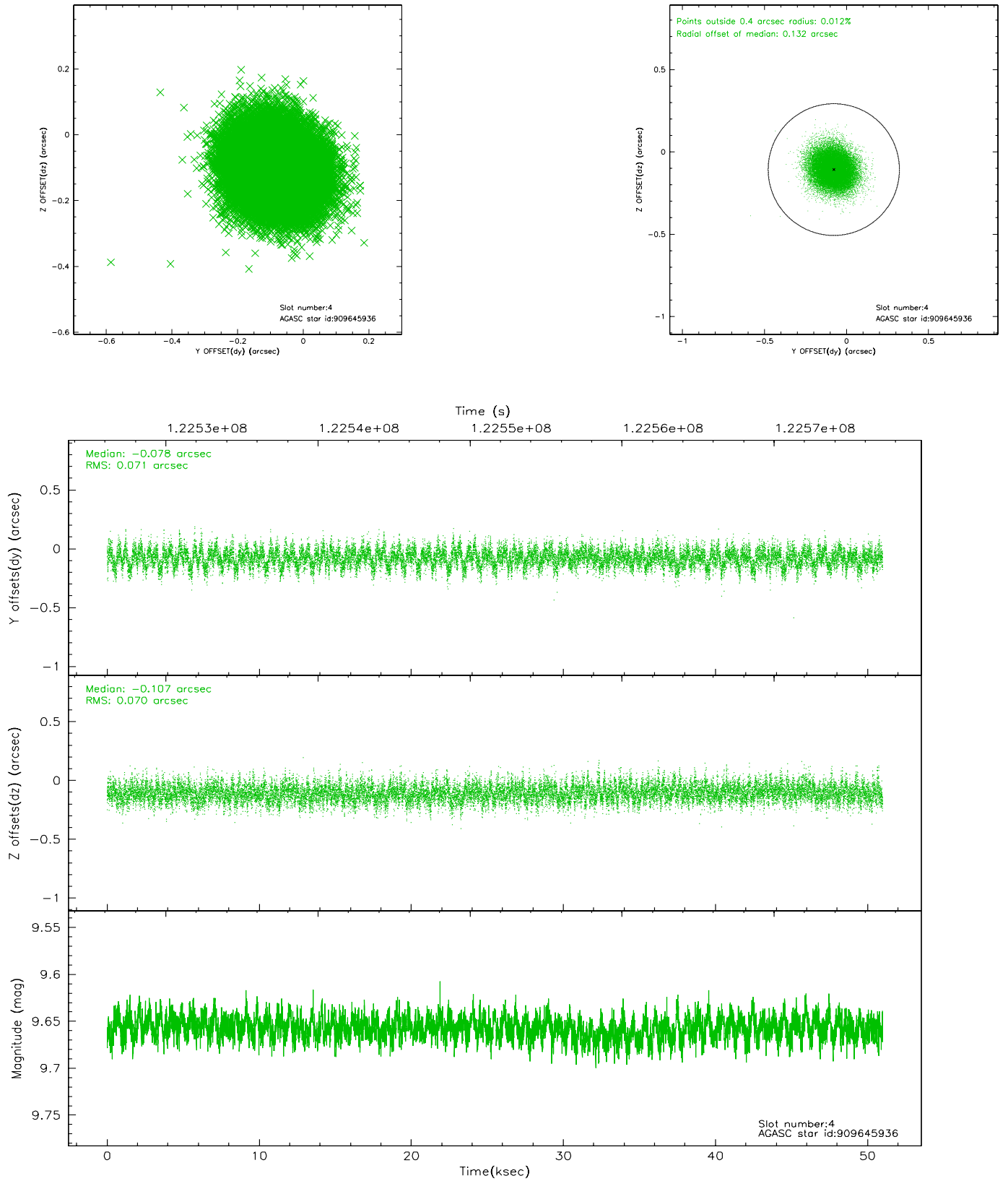
slot	status	id	mag	n_pts	med_dy	med_dz	dr1	dr2	ra	dec	mean_y	mean_z
0	FID	ACIS-S-2	7.11	12439	0.032	0.025	0.004	0.009	0.000000	0.000000	-755.68	-1728.68
1	FID	ACIS-S-4	7.20	12440	-0.053	-0.022	0.004	0.009	0.000000	0.000000	2157.53	179.77
2	BAD	ACIS-S-5	7.24	8189	0.074	-0.008	0.016	0.029	0.000000	0.000000	-1808.42	173.54
3	GUIDE	909644560	8.53	24873	-0.029	-0.013	0.087	0.135	325.777369	-23.053879	313.94	2353.03
4	GUIDE	909645936	9.66	24861	-0.078	-0.107	0.107	0.172	324.636638	-23.148786	-544.76	-1341.28
5	BAD	909642752	10.82	22079	-0.001	-0.026	0.249	0.464	324.992735	-23.353085	520.03	-450.23
6	GUIDE	909646560	9.49	24849	0.174	0.006	0.106	0.168	325.225689	-23.808093	2316.57	-232.20
7	GUIDE	909641120	9.93	24793	-0.062	0.115	0.111	0.183	325.222714	-22.781653	-1195.66	916.73

## 2.4 Star Slots

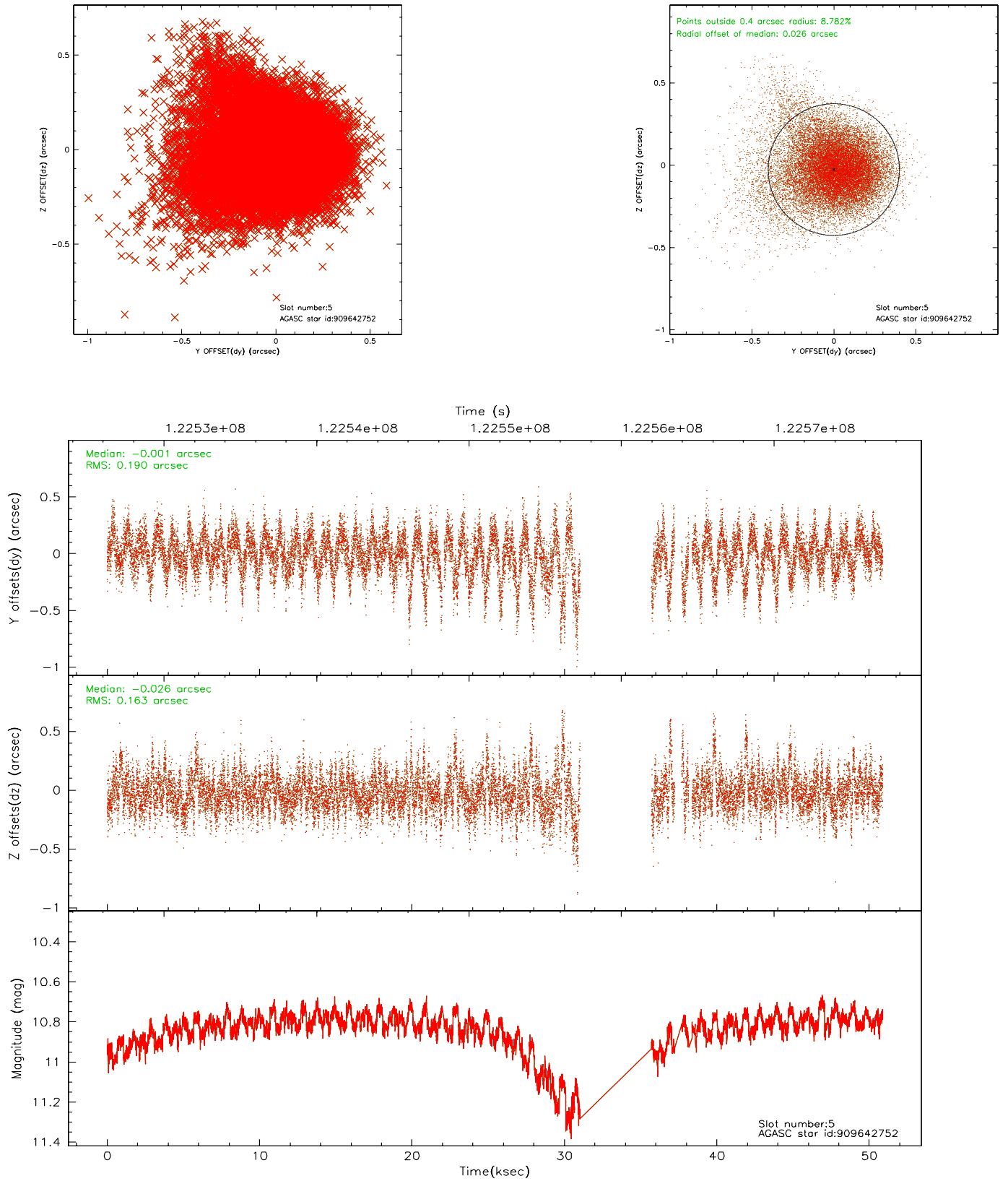
### 2.4.1 Slot 3



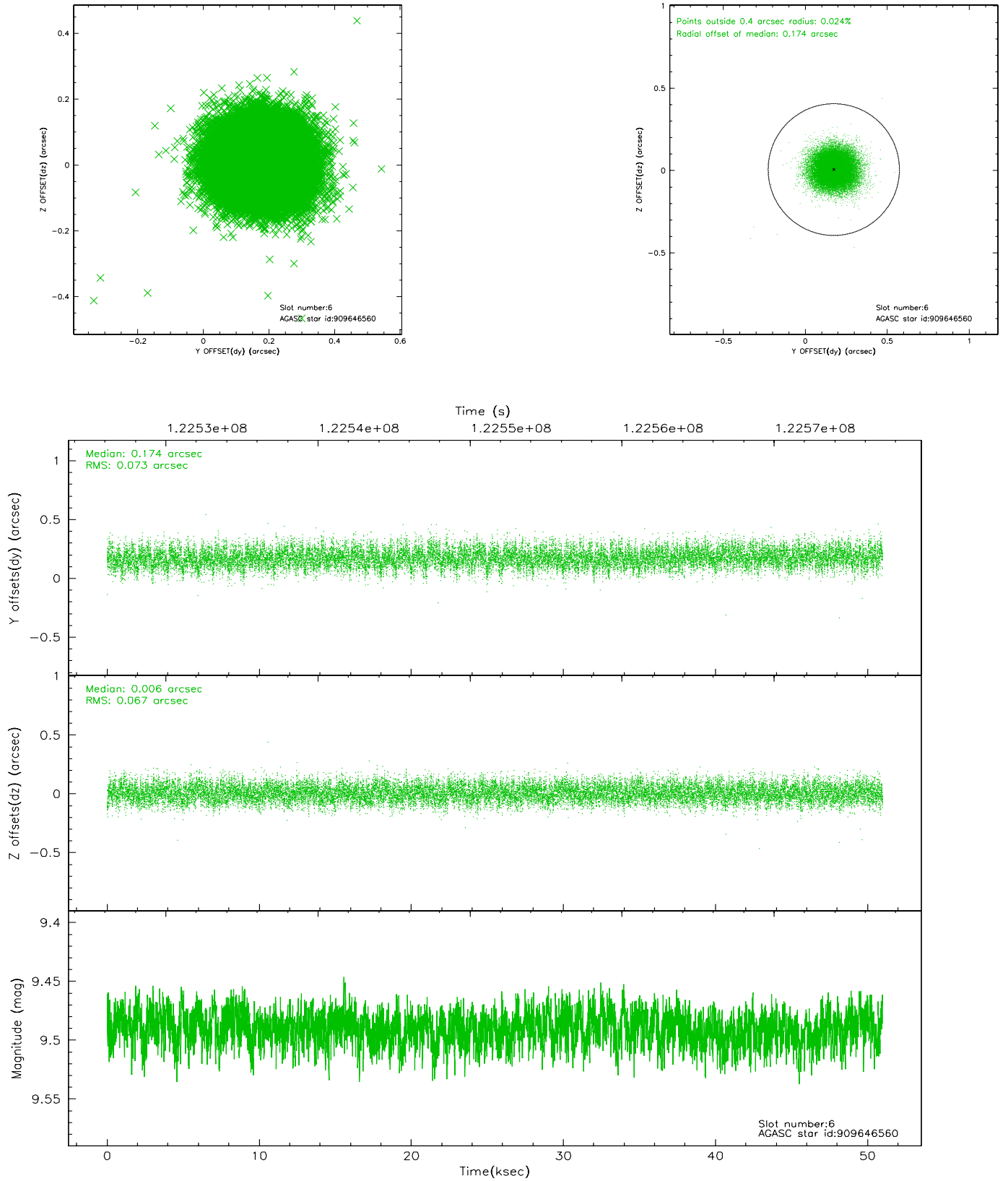
## 2.4.2 Slot 4



### 2.4.3 Slot 5

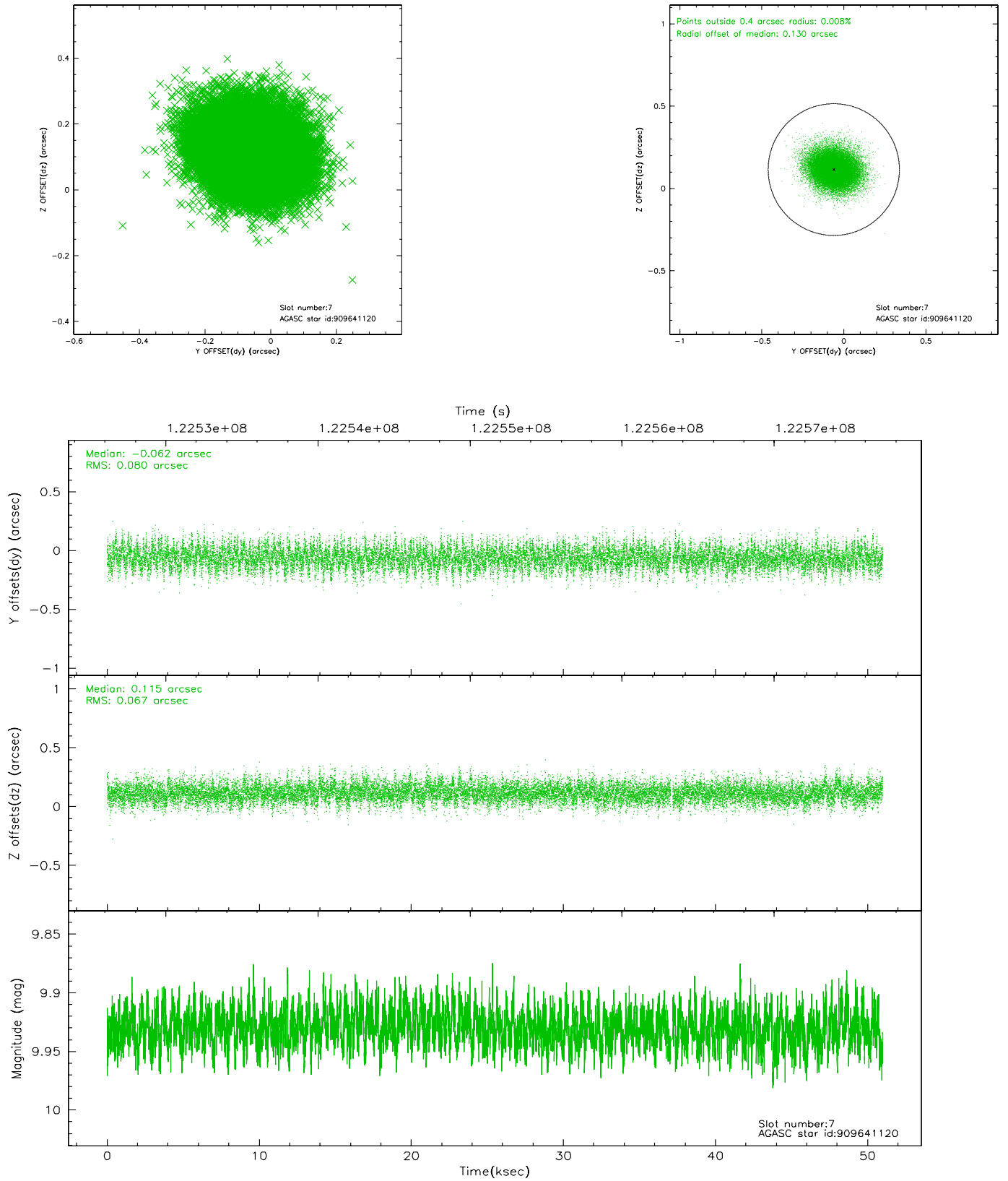


## 2.4.4 Slot 6



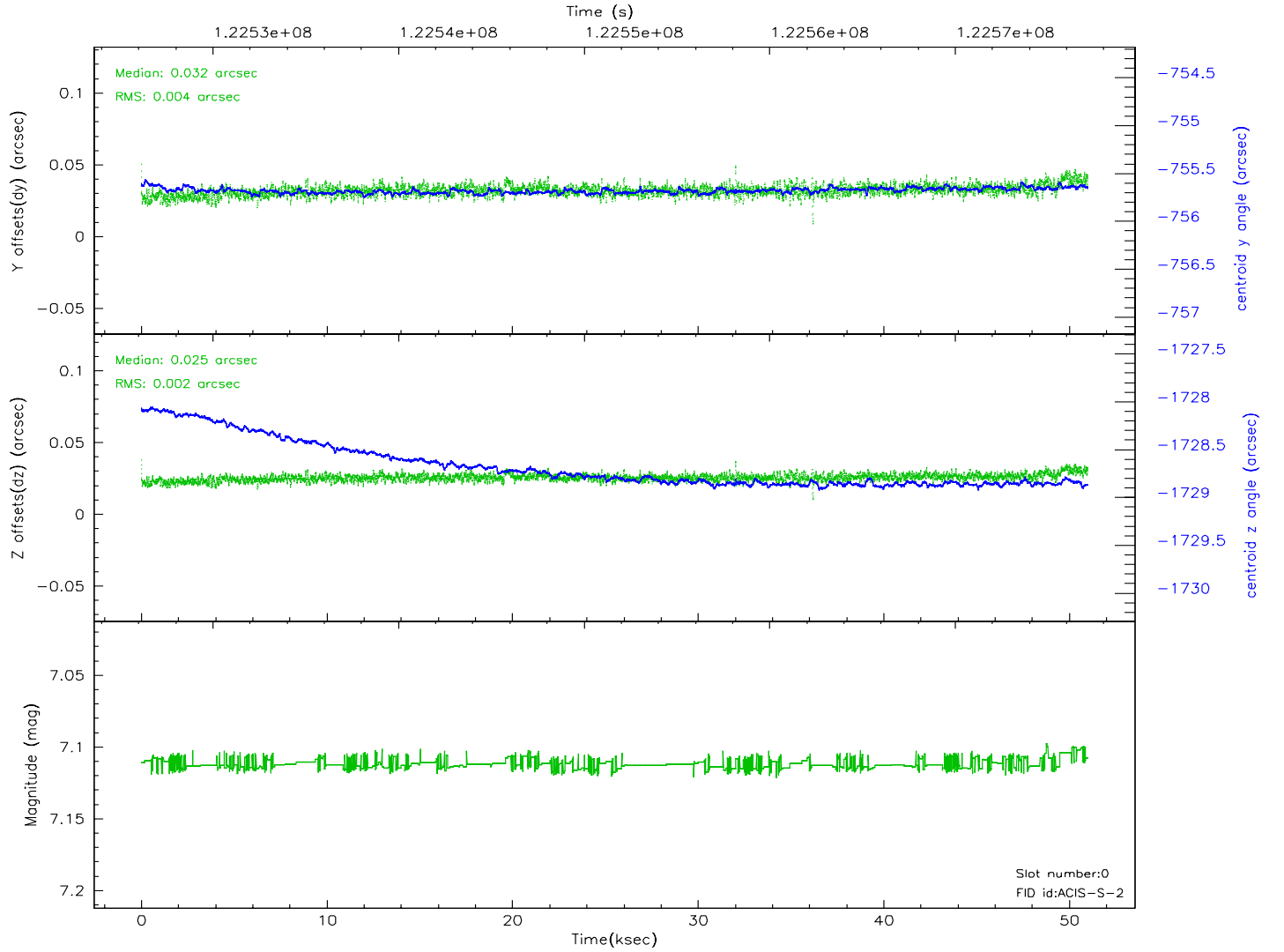
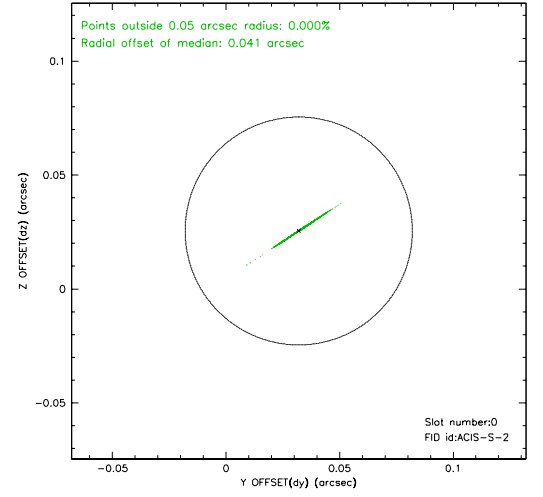
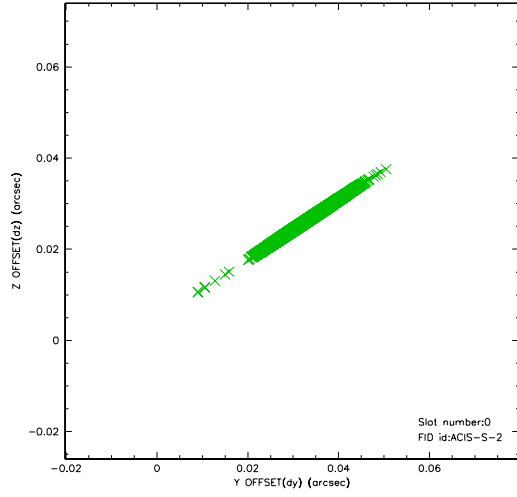


## 2.4.5 Slot 7

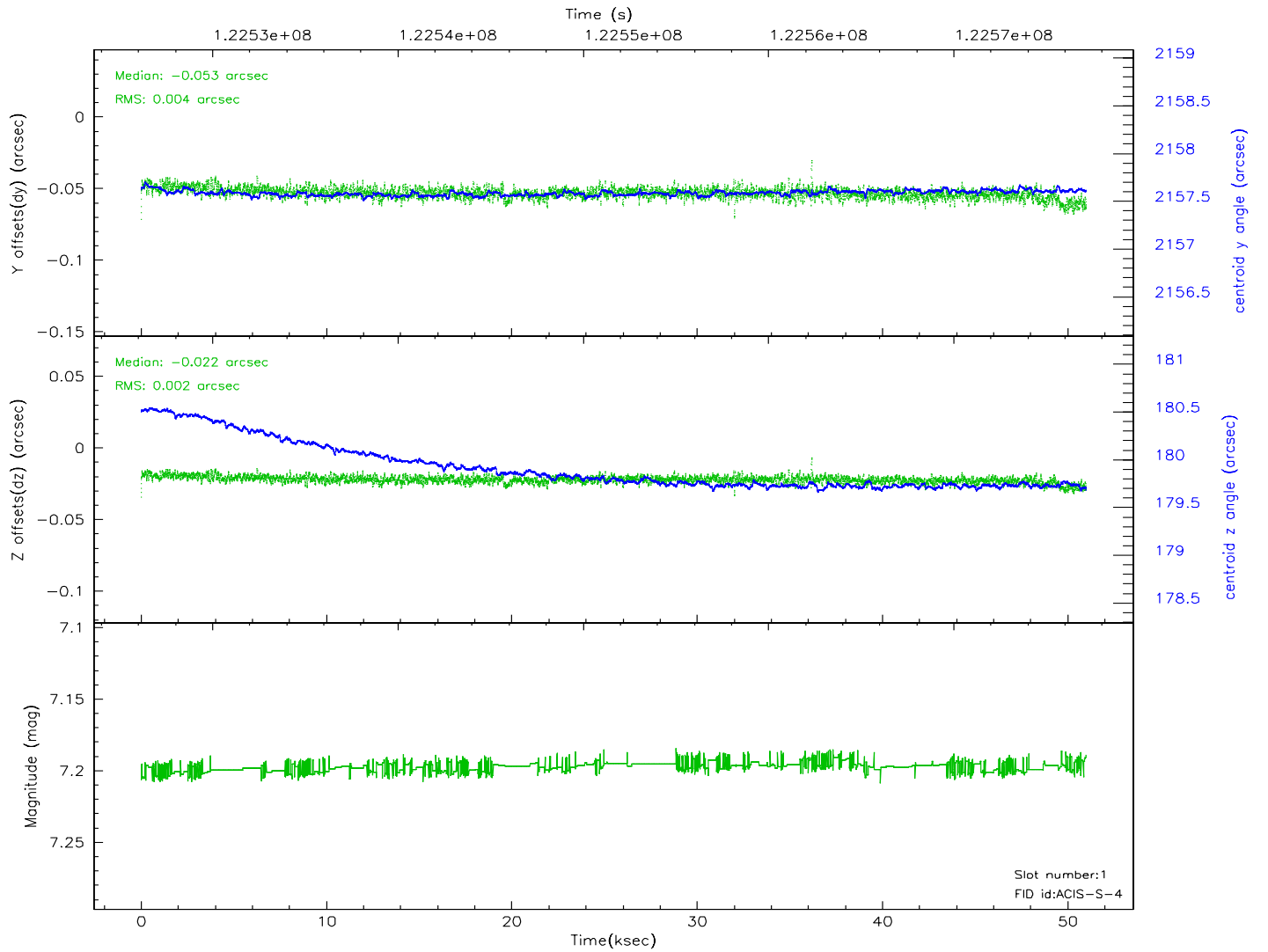
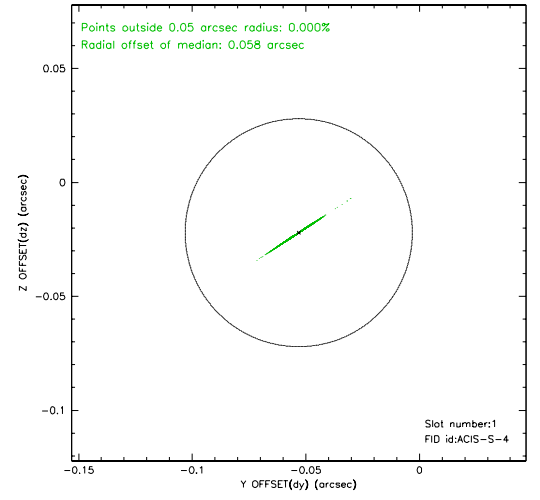
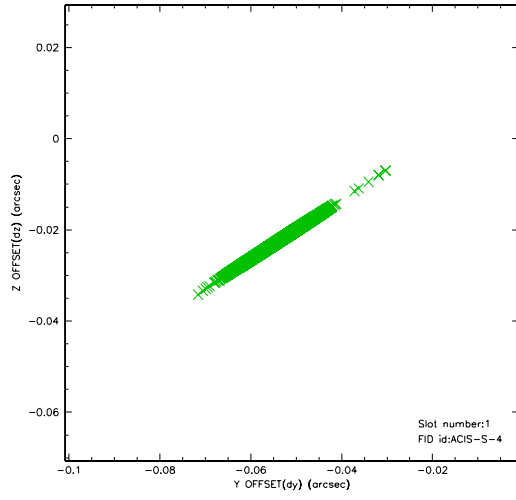


## 2.5 FID Slots

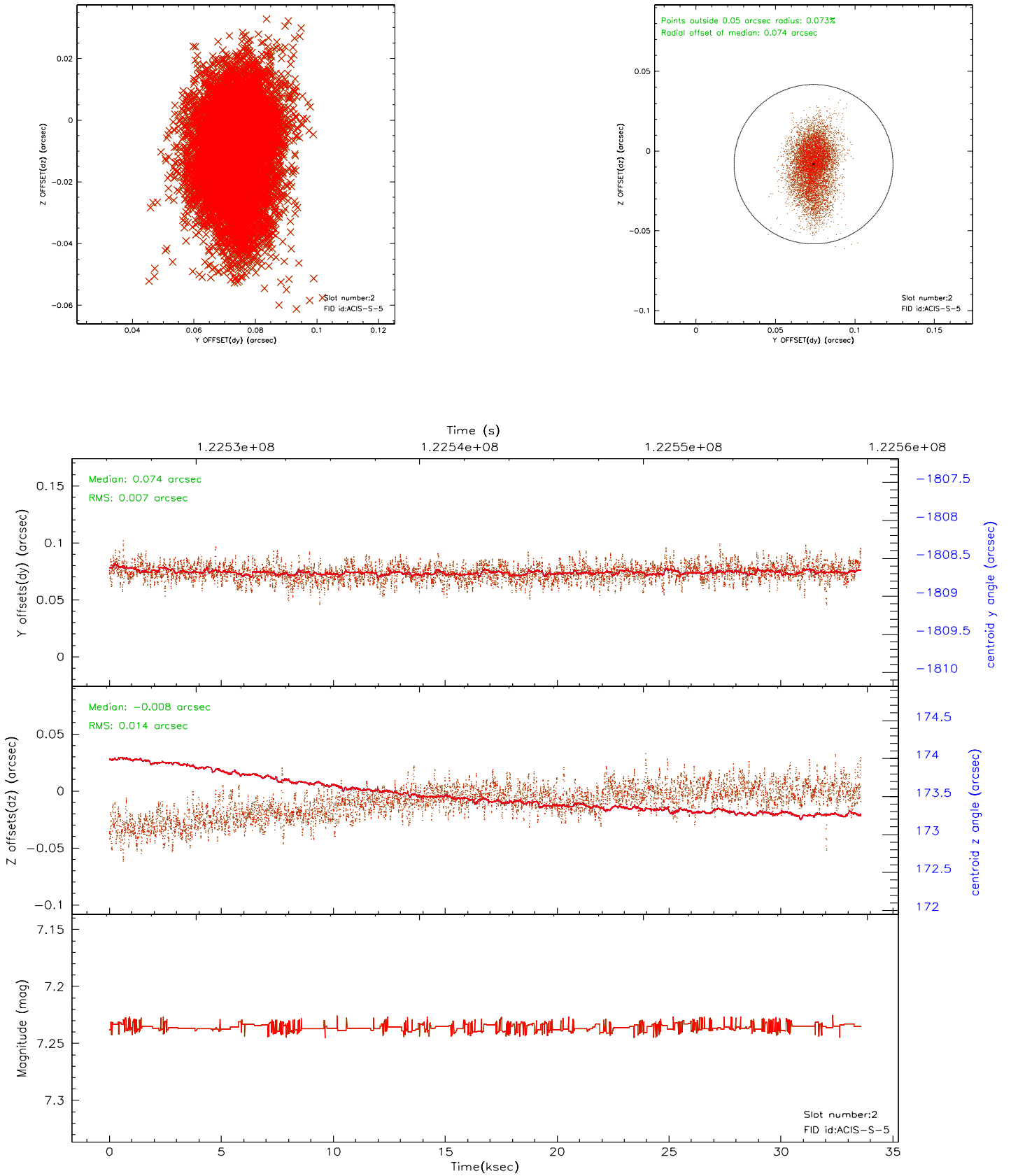
### 2.5.1 Slot 0



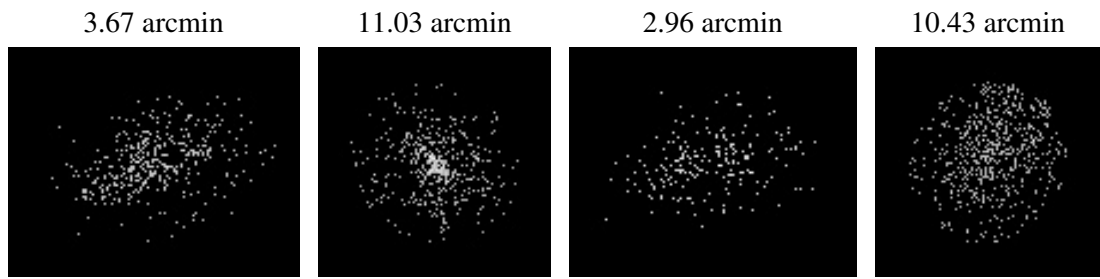
## 2.5.2 Slot 1



### 2.5.3 Slot 2



### 3 Point Sources



# A Summary

## A.1 Status

V&V Scientist	Beth Sundheim
V&V Date (YYYY-MM-DD)	2007.01.12
V&V Edition	1
V&V Disposition and Status	OK
V&V Charge Time	50.089

## A.2 Comments

The guide star in slot 5 and the fid light in slot 2 were removed from the aspect solution due to poor data quality. The aspect solution is not expected to be degraded by removing these two slots from the solution.