

V&V Reference Report

L2 ASCDS Version : 7.6.10

Observation 2409 - L2 Version 001
Chandra X-Ray Center

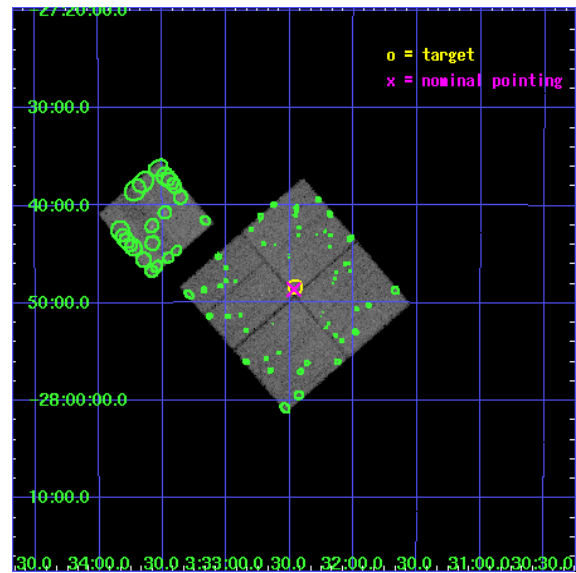
L2 Processing Date : Jun 21 2007

Contents

1	Front	2
2	OBI	3
2.1	OBI	3
2.1.1	Images	3
2.1.2	Bias	3
2.1.3	Parameters	4
2.1.4	Events	4
2.2	Compared Parameters	5
2.3	Aspect	6
2.4	Star Slots	9
2.4.1	Slot 3	9
2.4.2	Slot 4	10
2.4.3	Slot 5	11
2.4.4	Slot 6	12
2.4.5	Slot 7	13
2.5	FID Slots	14
2.5.1	Slot 0	14
2.5.2	Slot 1	15
2.5.3	Slot 2	16
3	Point Sources	17
A	Summary	18
A.1	Status	18
A.2	Comments	18

1 Front

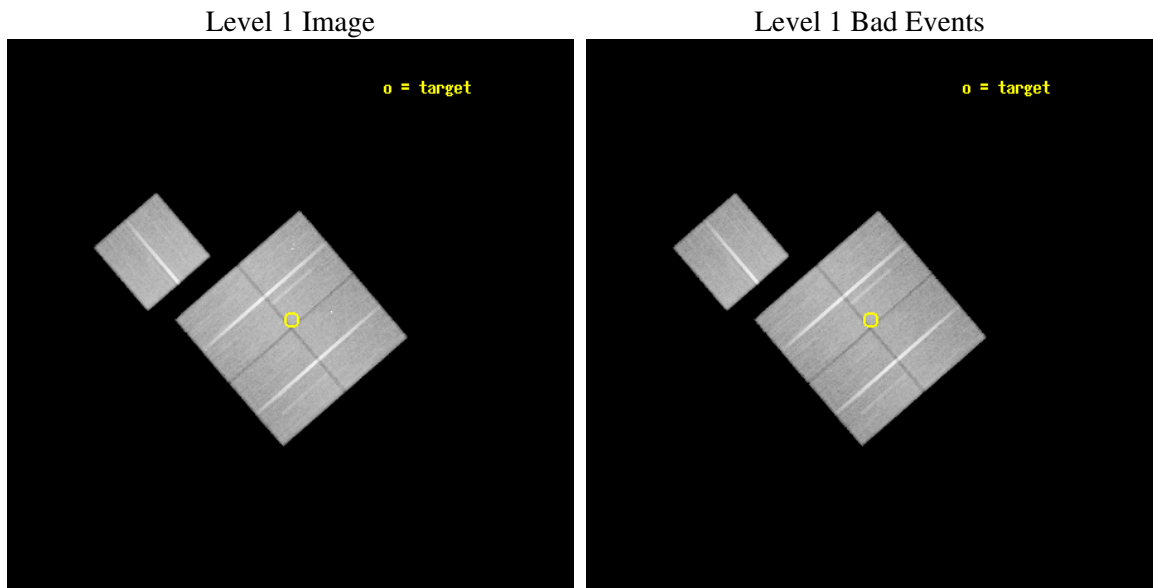
seq_num	900066
obs_id	2409
title	AN ULTRADEEP SURVEY IN THE CHANDRA DEEP FIELD SOUTH
observer	PROF. RICCARDO GIACCONI
object	CDFS
dtcycle	0
cycle	P
ra_targ	53.114583
dec_targ	-27.806389
ra_nom	53.116990259747
dec_nom	-27.810723195112
roll_nom	319.20980757313
revision	2
ontime	69895.617935106
livetime	68982.380230379
ontime0	69901.899865597
ontime1	69898.758905366
ontime2	69898.758905351
ontime3	69895.617935106
ontime6	69901.899865597
l2events	207510



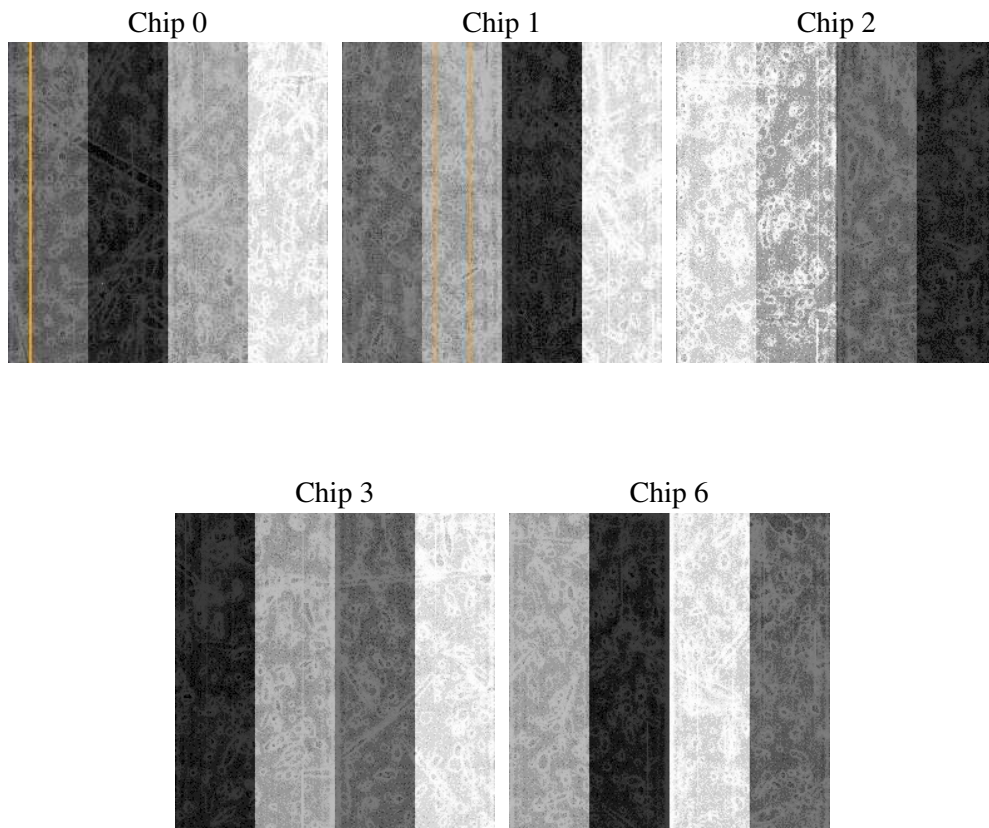
2 OBI

2.1 OBI

2.1.1 Images



2.1.2 Bias



2.1.3 Parameters

obi_num	0
ascdsver	7.6.10
caldbver	3.4.0
date	2007-06-21T16:53:51
revision	2

sched_exp_time	69788.746000
ontime	69895.617935106
ontime0	69901.899865597
ontime1	69898.758905366
ontime2	69898.758905351
ontime3	69895.617935106
ontime6	69901.899865597
l1events	2031424

2.1.4 Events

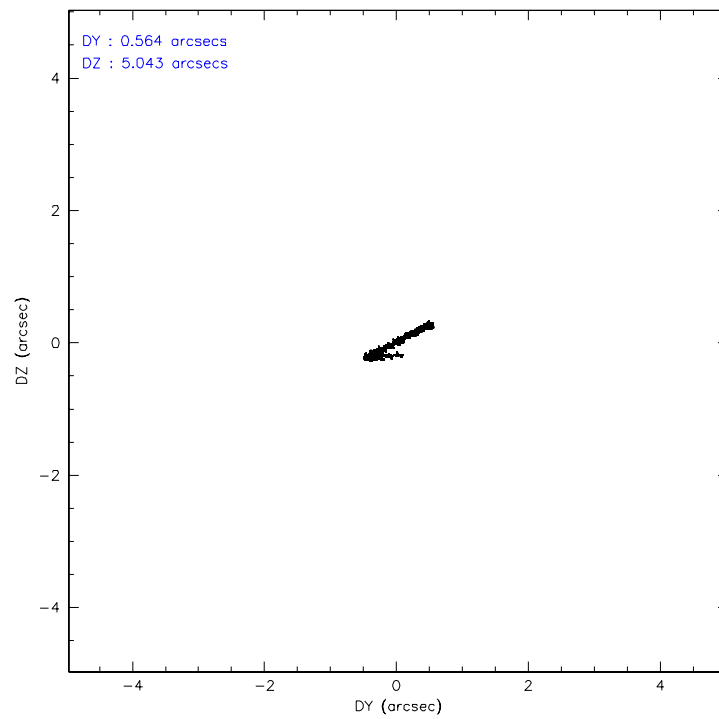
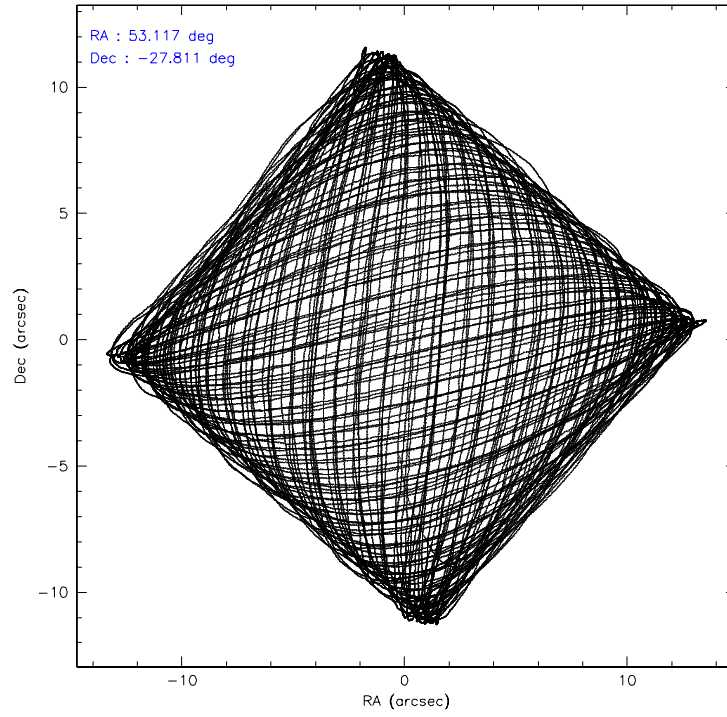
	ccd 0	ccd 1	ccd 2	ccd 3	ccd 6
level 1 events	383677	384865	424783	418972	419127
rejected events	335414	333924	378184	370754	370907
rejected %	87%	86%	89%	88%	88%

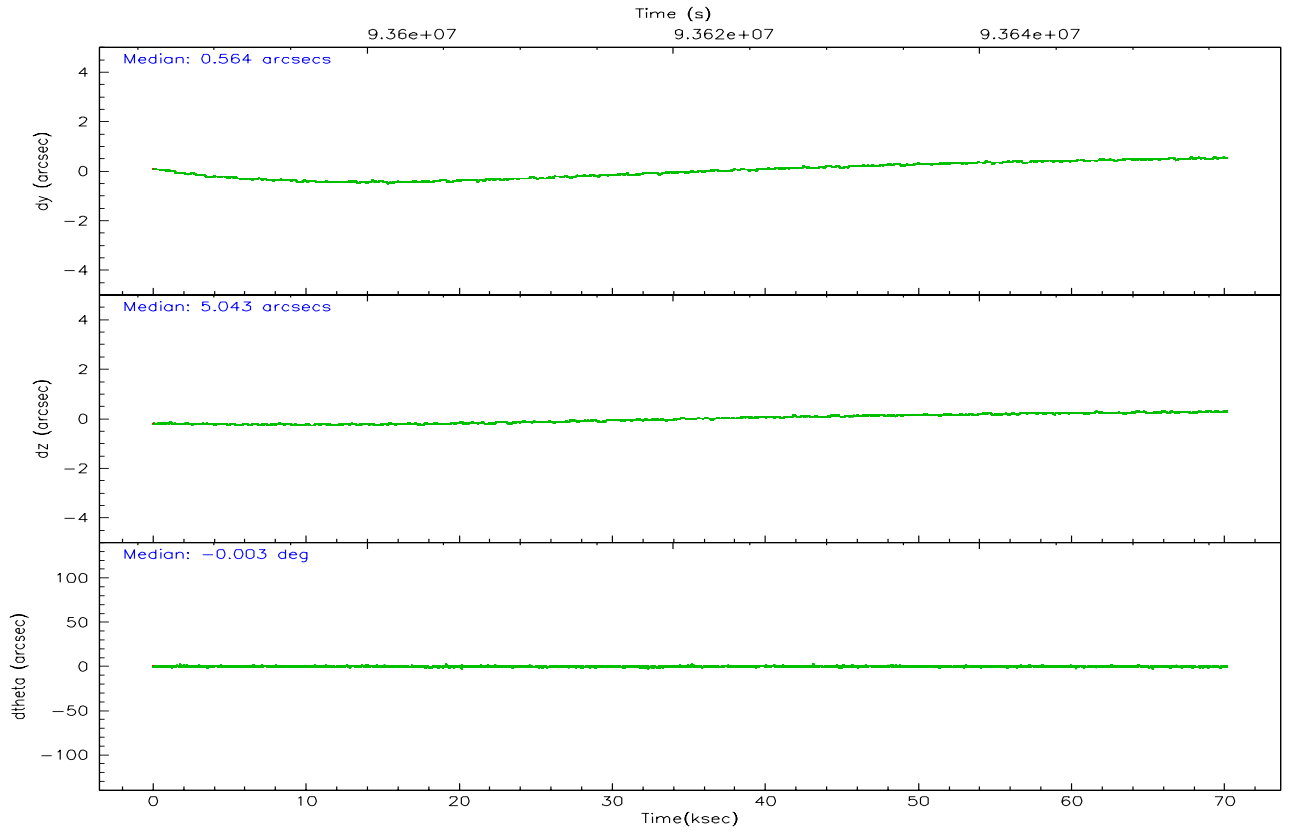
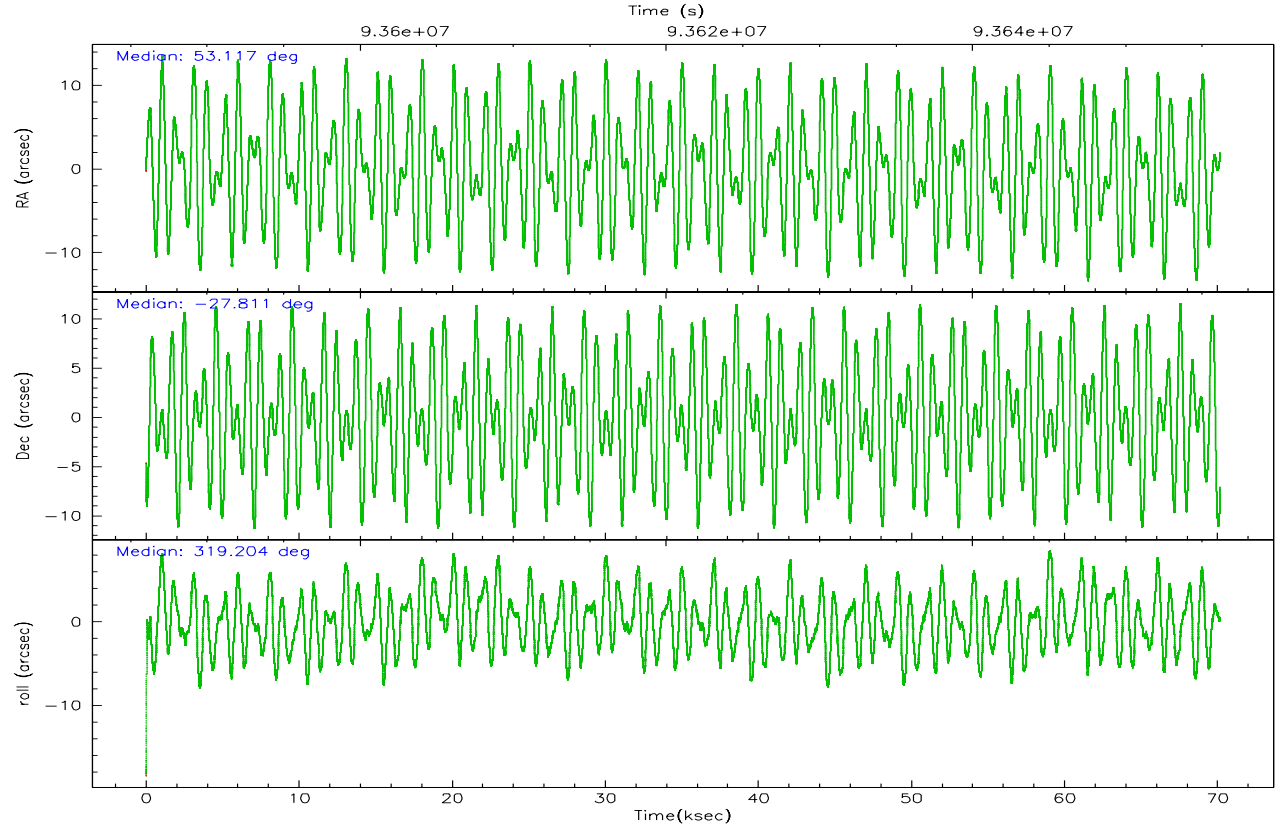
	ccd 0	ccd 1	ccd 2	ccd 3	ccd 6
grade 0 events	20058	20781	19540	21160	19779
	5%	5%	4%	5%	4%
grade 1 events	193	193	180	172	165
	0%	0%	0%	0%	0%
grade 2 events	10318	10325	9984	9585	9484
	2%	2%	2%	2%	2%
grade 3 events	4878	5230	4493	4465	4897
	1%	1%	1%	1%	1%
grade 4 events	4456	5163	4409	4538	4771
	1%	1%	1%	1%	1%
grade 5 events	14699	15853	14158	16053	17185
	3%	4%	3%	3%	4%
grade 6 events	8553	9444	8173	8472	9292
	2%	2%	1%	2%	2%
grade 7 events	320522	317876	363846	354527	353554
	83%	82%	85%	84%	84%

2.2 Compared Parameters

Parameter	Planned	Actual	Parameter	Planned	Actual
Instrument	ACIS	ACIS	Obspar format version number	6	6
Detector	ACIS-01236	ACIS-01236	Obspar file type	PREDICTED	ACTUAL
Grating	NONE	NONE	Obspar update status	NONE	UPDATED
Data mode	FAINT	FAINT	Number of optional ACIS chips dropped	0	0
Observation mode	POINTING	POINTING	On-chip summing requested	N	N
Pointing RA	53.086468	53.11699025974735	Subarray requested	NONE	NONE
Pointing Dec	-27.805526	-27.81072319511181	Alternating exposures requested	N	N
Pointing Roll	318.986883	319.2098075731349	Primary exposure time	0.000000	3.1
SIM focus pos (mm)	-0.782348	-0.7809083437167272			
SIM defocus (mm)	0	0.001439871863259334			
SIM translation stage pos (mm)	-233.592463	-233.5874344608287			
SIM translation stage offset (mm)	0	-0.005018542100998502			
Observation start time	93586385.184000	93585335.308819			
Observation start date	2000-12-19T04:12:01	2000-12-19T03:55:35			
Observation end time	93656174.184000	93656488.24904101			
Observation end date	2000-12-19T23:35:10	2000-12-19T23:41:28			
Read mode	TIMED	TIMED			

2.3 Aspect



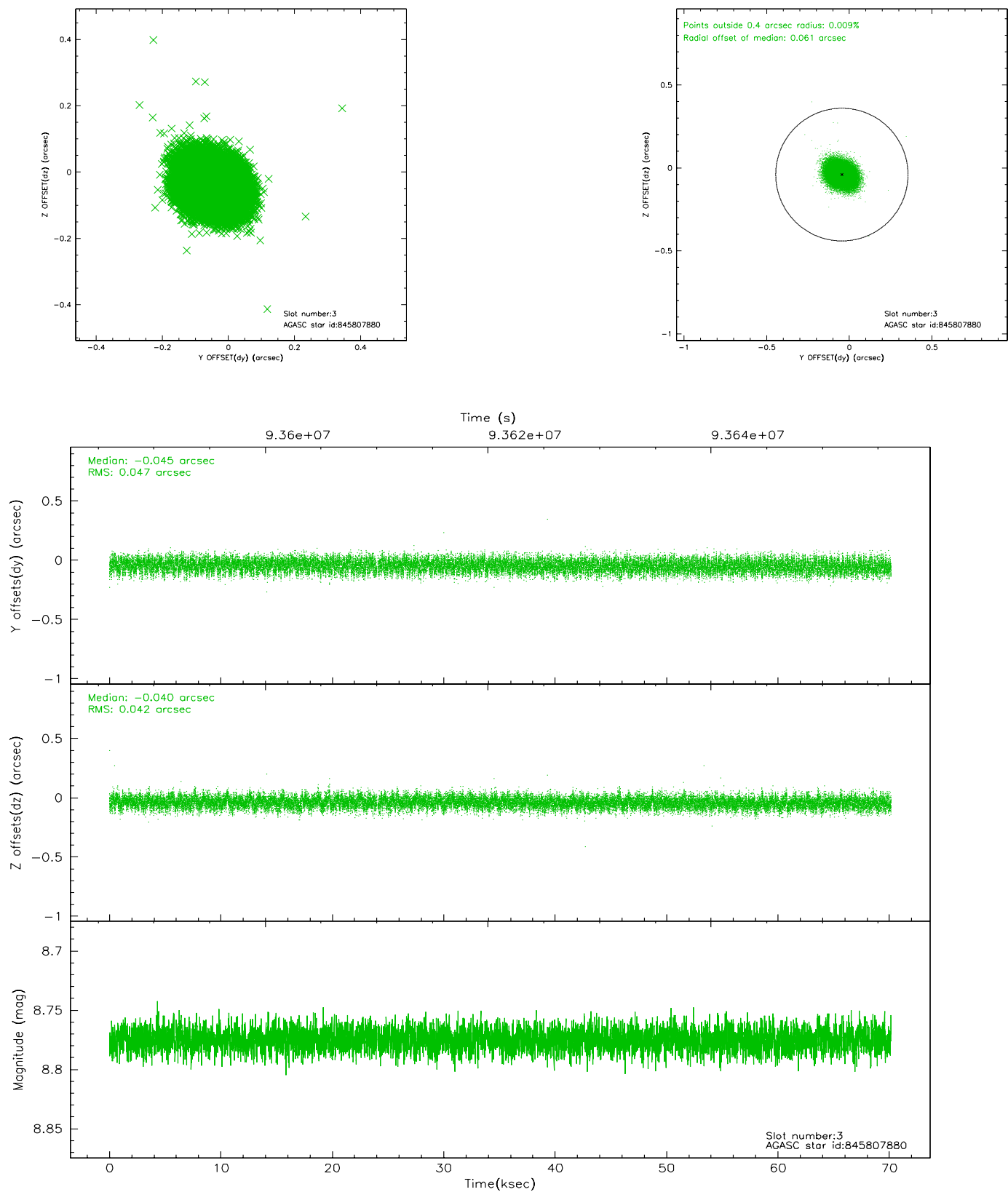


Slot Statistics

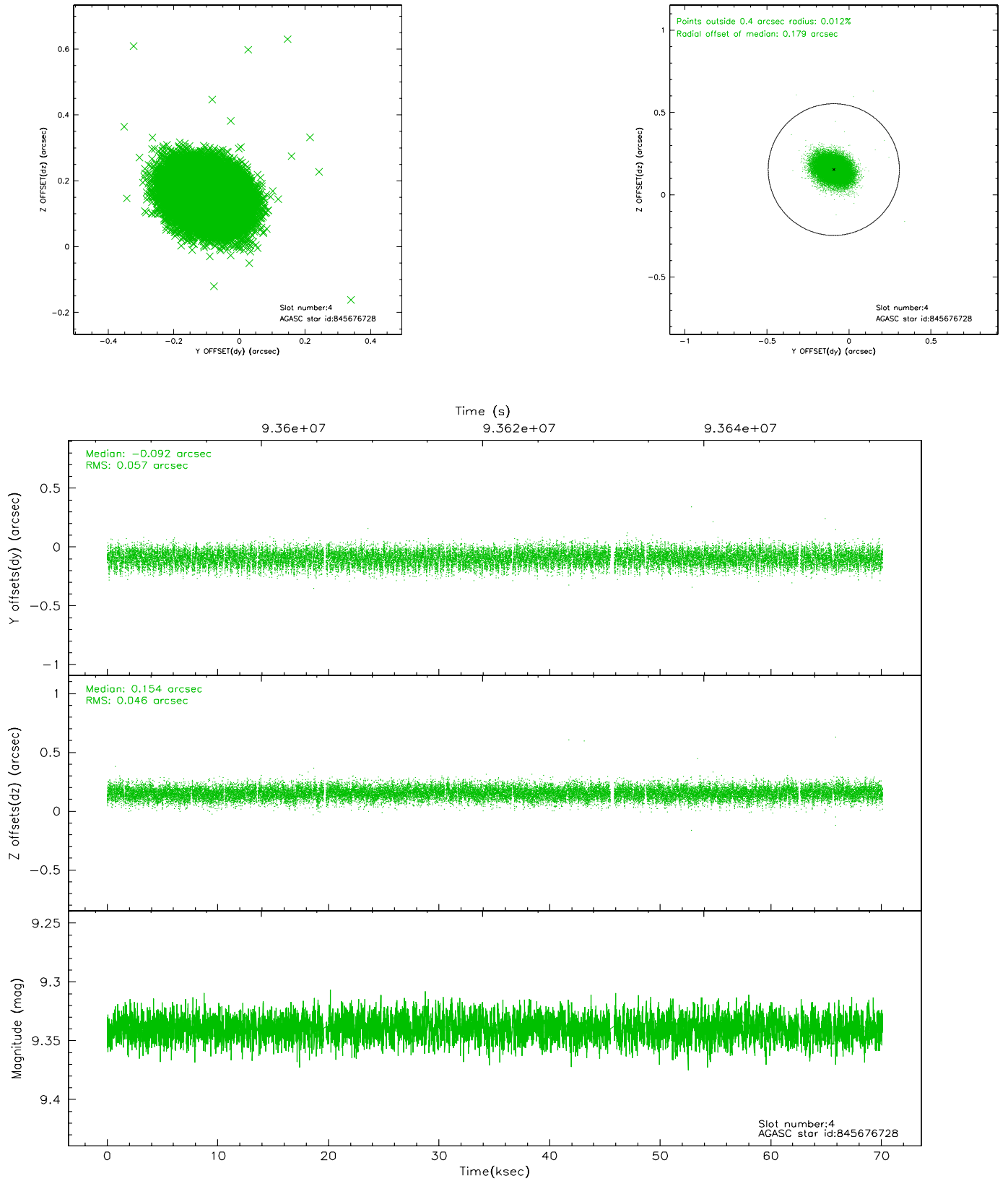
slot	status	id	mag	n_pts	med_dy	med_dz	dr1	dr2	ra	dec	mean_y	mean_z
0	FID	ACIS-I-2	7.15	17112	-0.017	-0.025	0.013	0.019	0.000000	0.000000	-754.90	-834.78
1	FID	ACIS-I-4	7.19	17110	-0.055	0.026	0.033	0.040	0.000000	0.000000	2159.12	1071.50
2	FID	ACIS-I-5	7.23	17112	-0.022	0.067	0.020	0.027	0.000000	0.000000	-1808.81	1069.29
3	GUIDE	845807880	8.77	34160	-0.045	-0.040	0.067	0.107	53.382027	-27.886093	901.16	397.74
4	GUIDE	845676728	9.34	32909	-0.092	0.154	0.078	0.127	52.877179	-27.664318	-836.54	-54.48
5	GUIDE	845676936	9.51	34203	-0.049	-0.093	0.079	0.132	52.843773	-27.880153	-405.41	-709.95
6	GUIDE	845808520	10.20	34127	0.042	0.085	0.116	0.192	53.575292	-27.720766	977.74	1250.60
7	GUIDE	845816344	9.26	34212	0.143	-0.099	0.101	0.168	53.137522	-28.675689	2178.40	-2257.61

2.4 Star Slots

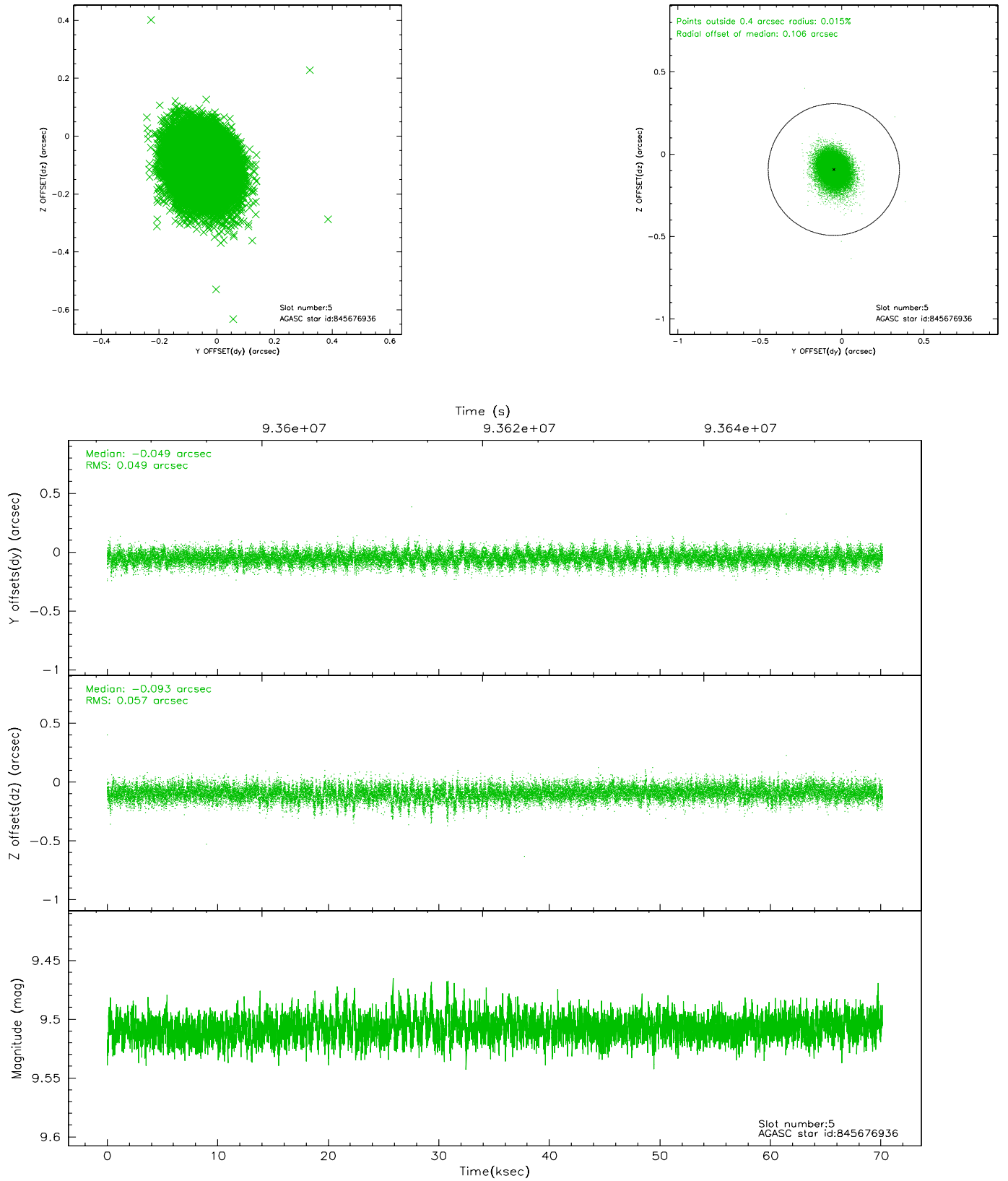
2.4.1 Slot 3



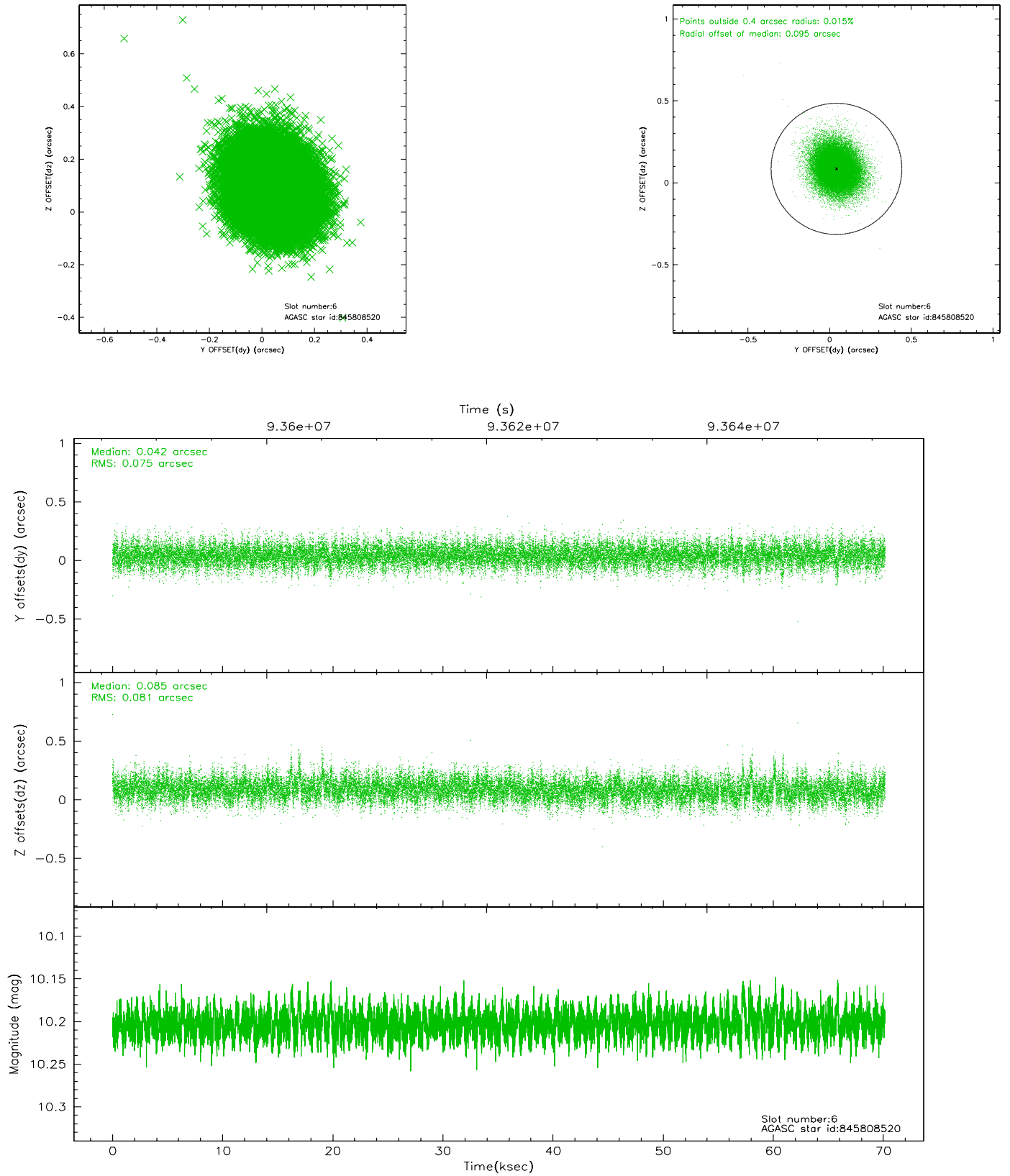
2.4.2 Slot 4



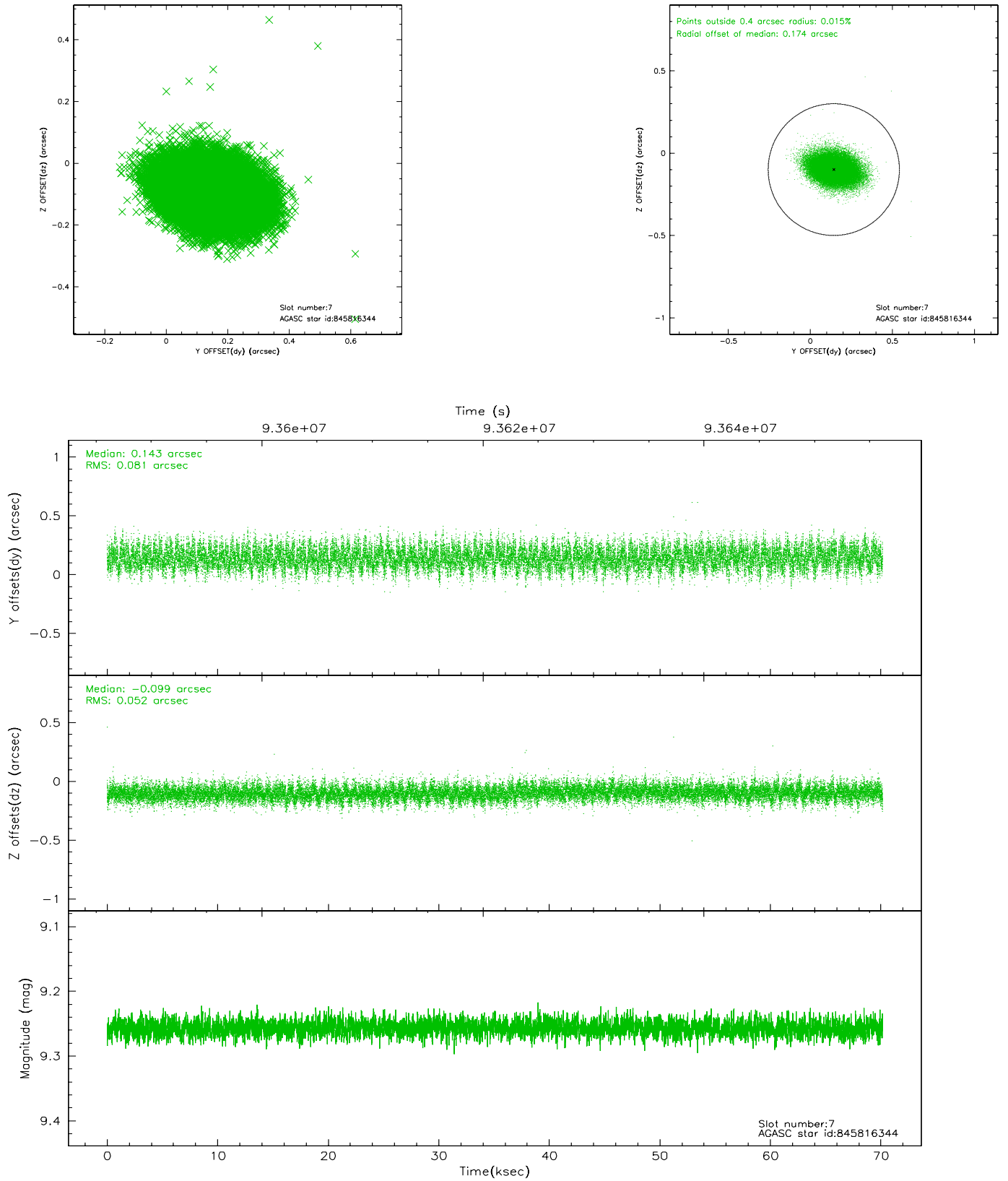
2.4.3 Slot 5



2.4.4 Slot 6

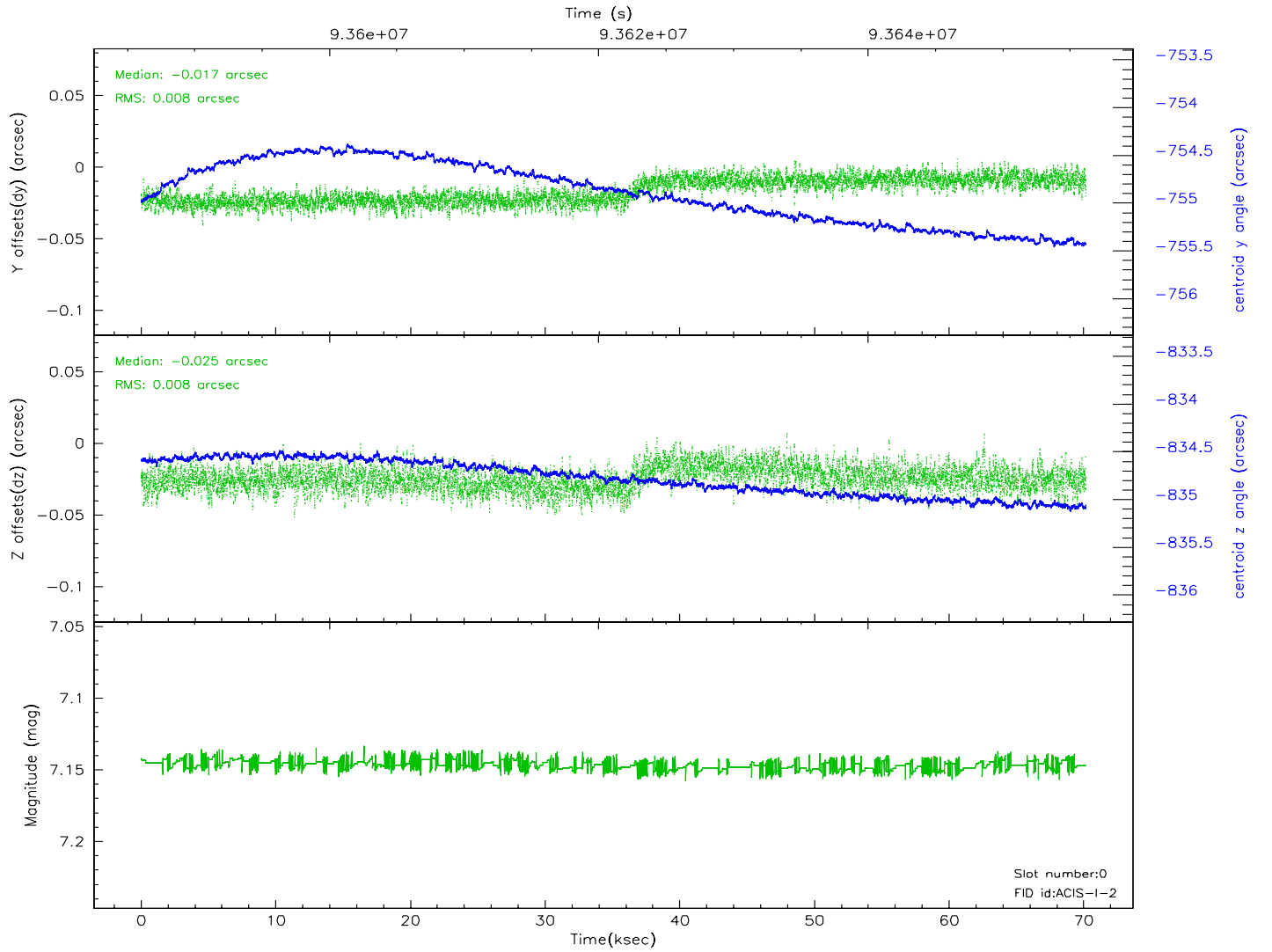
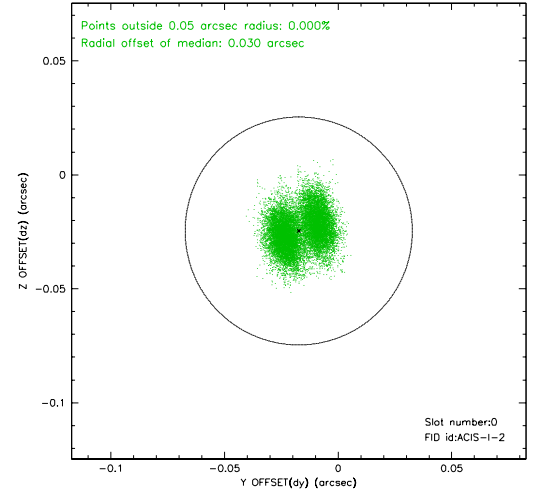
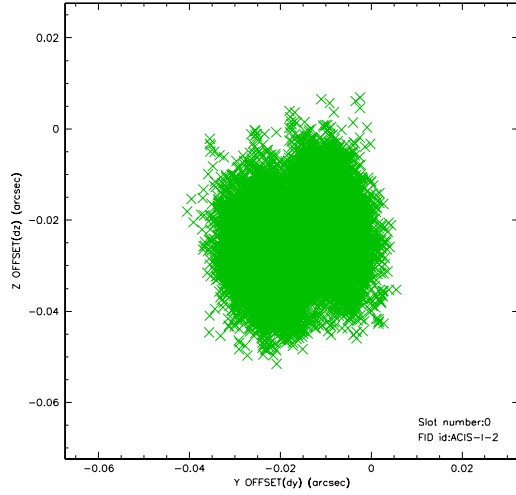


2.4.5 Slot 7

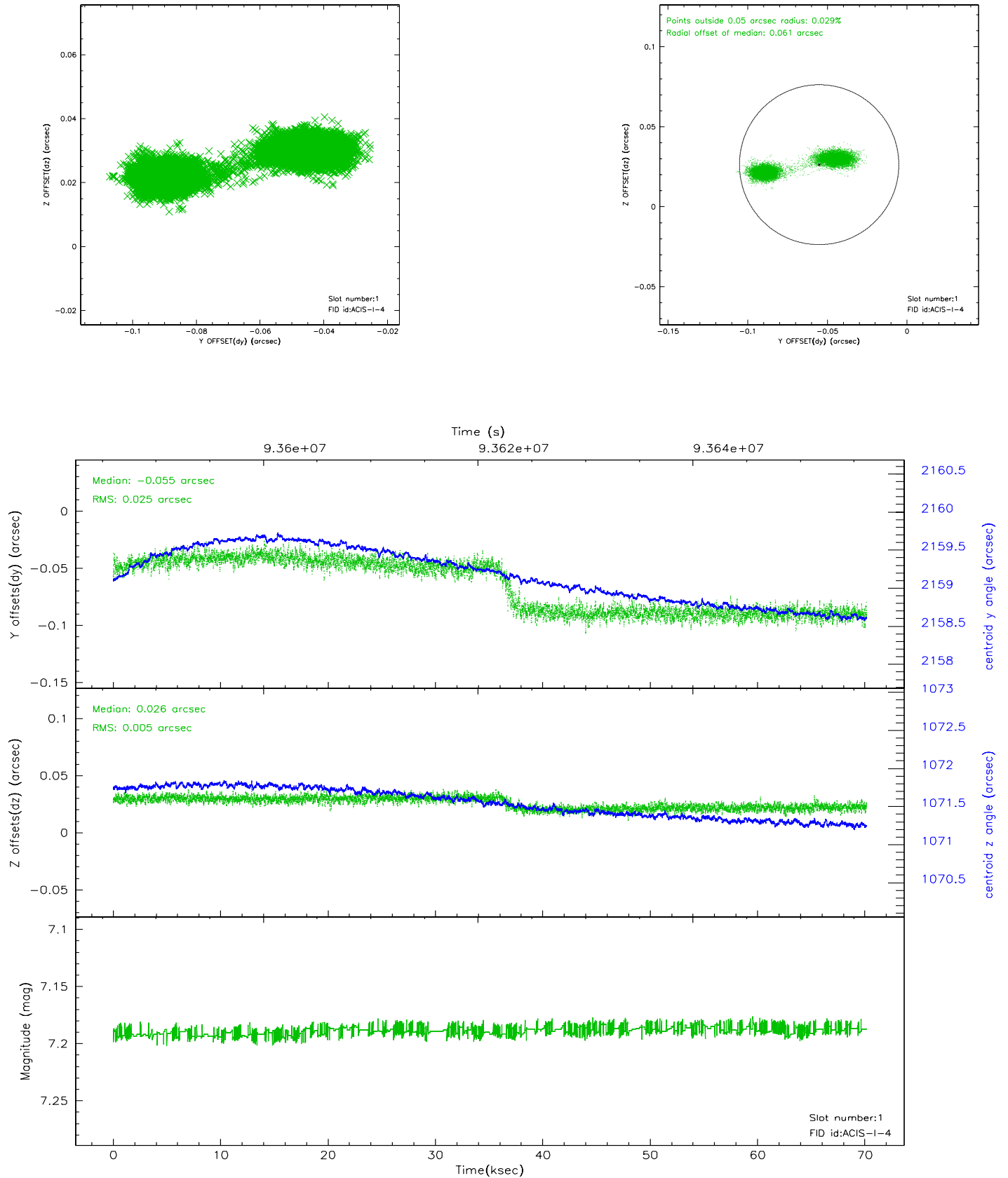


2.5 FID Slots

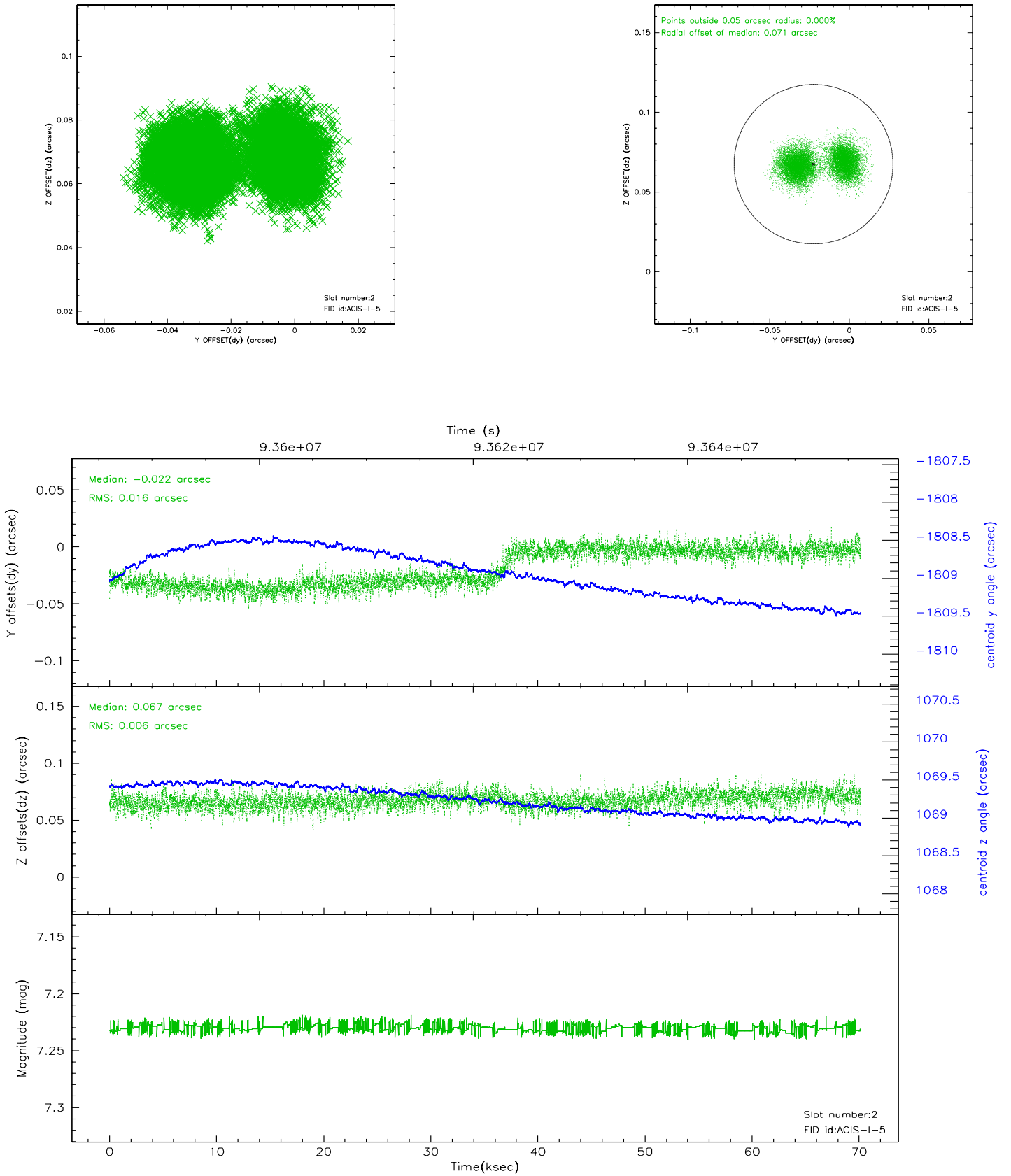
2.5.1 Slot 0



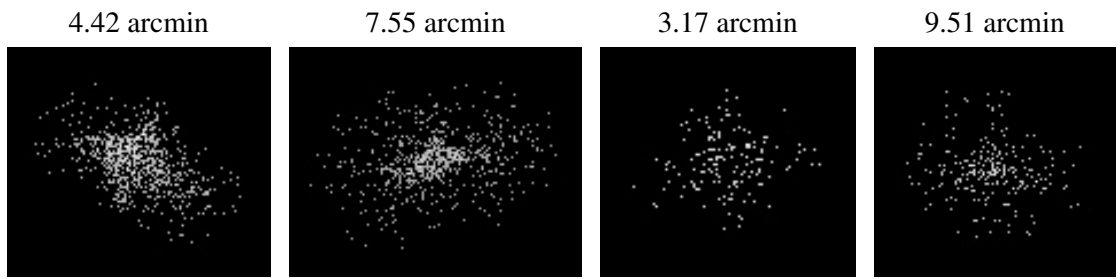
2.5.2 Slot 1



2.5.3 Slot 2



3 Point Sources



A Summary

A.1 Status

V&V Scientist	Jen Lauer
V&V Date (YYYY-MM-DD)	2007.06.22
V&V Edition	1
V&V Disposition and Status	OK
V&V Charge Time	69.895

A.2 Comments

Monitor constraint: follows obs2312 by 5 days.