

V&V Reference Report

L2 ASCDS Version : 7.6.9

Observation 2259 - L2 Version 001
Chandra X-Ray Center

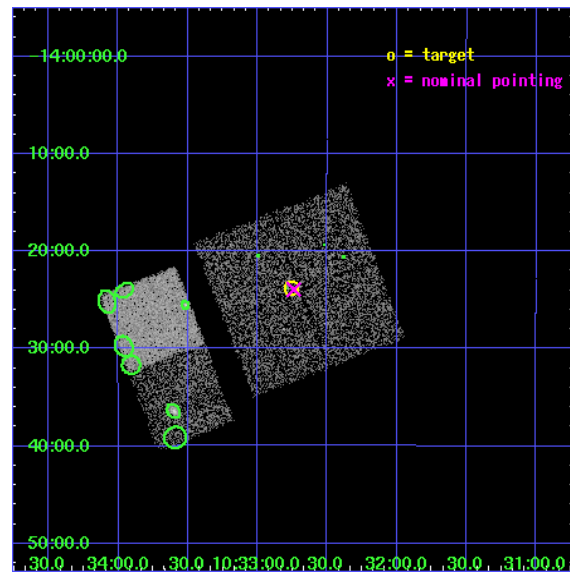
L2 Processing Date : Nov 24 2006

Contents

1	Front	2
2	OBI	3
2.1	OBI	3
2.1.1	Images	3
2.1.2	Bias	3
2.1.3	Parameters	4
2.1.4	Events	4
2.2	Compared Parameters	5
2.3	Aspect	6
2.4	Star Slots	9
2.4.1	Slot 3	9
2.4.2	Slot 4	10
2.4.3	Slot 5	11
2.4.4	Slot 6	12
2.4.5	Slot 7	13
2.5	FID Slots	14
2.5.1	Slot 0	14
2.5.2	Slot 1	15
2.5.3	Slot 2	16
3	Point Sources	17
A	Summary	18
A.1	Status	18
A.2	Comments	18

1 Front

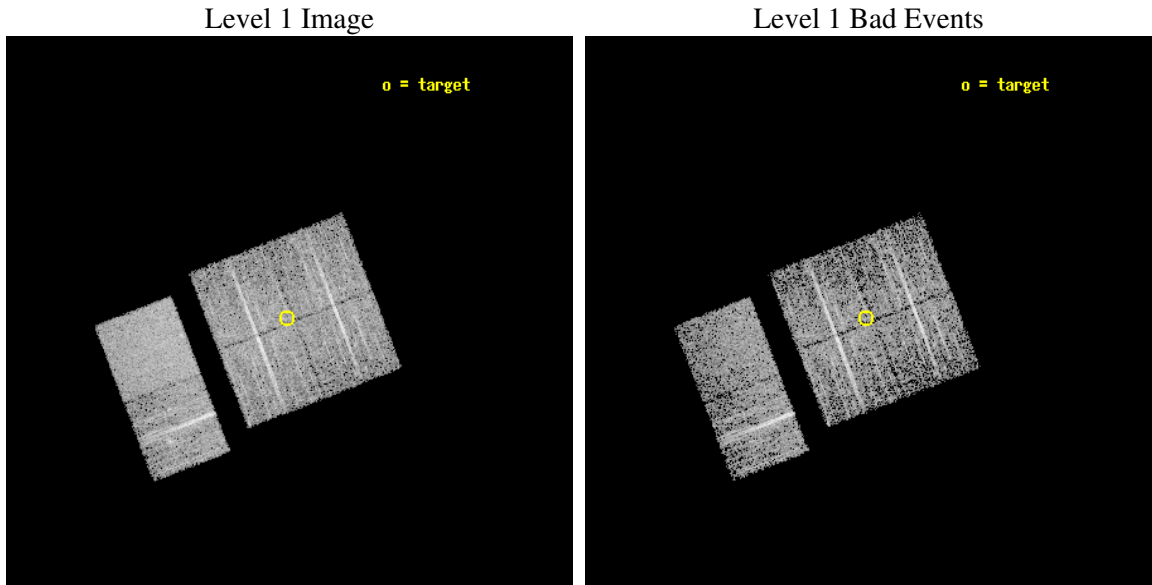
seq_num	900086
obs_id	2259
title	CHANDRA OBSERVATION OF HARD X-RAY SOURCES DISCOVERED WITH ASCA
observer	Dr Yoshihiro Ueda
object	AGX~J103244-1424
dtcycle	0
cycle	P
ra_targ	158.188333
dec_targ	-14.395694
ra_nom	158.184834072
dec_nom	-14.399000435243
roll_nom	248.88760815278
revision	2
ontime	4454.4000041485
livetime	4397.9957091783
ontime0	4454.4000041485
ontime1	4454.4000041485
ontime2	4454.4000041485
ontime3	4454.4000041485
ontime6	4454.4000041485
ontime7	4454.4000041485
l2events	27584



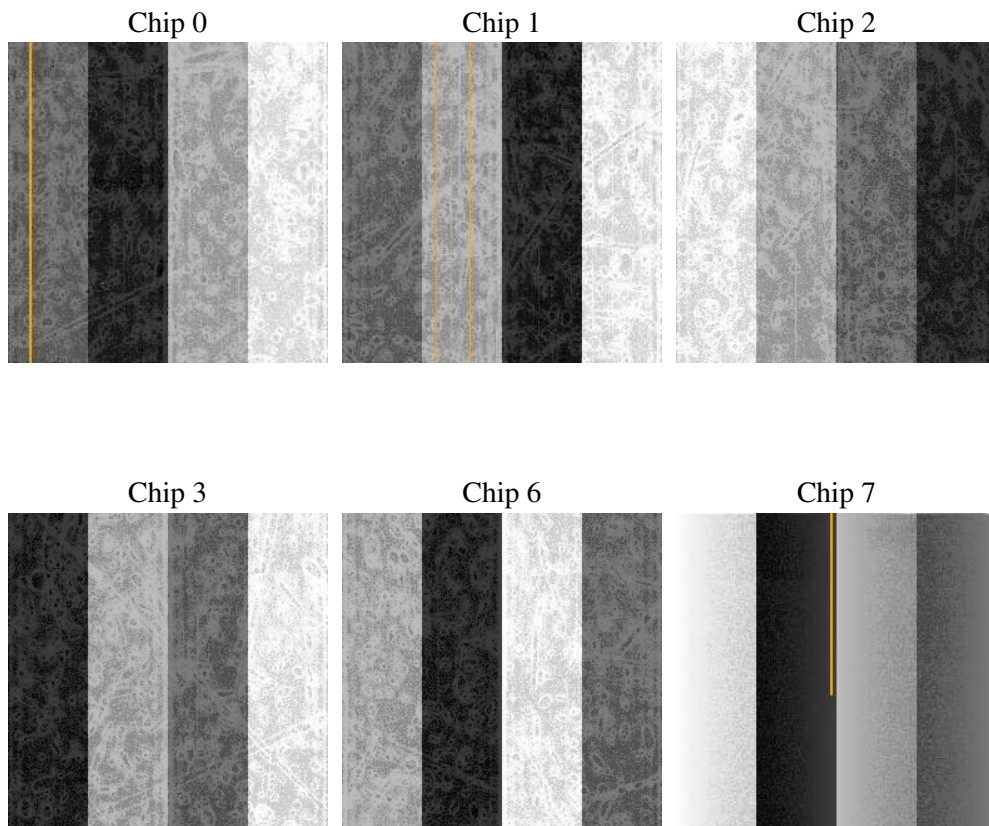
2 OBI

2.1 OBI

2.1.1 Images



2.1.2 Bias



2.1.3 Parameters

obi_num	0
ascdsver	7.6.9
caldsver	3.2.4
date	2006-11-25T03:34:07
revision	2

sched_exp_time	4500.000000
ontime	4459.6148838103
ontime0	4459.6148838103
ontime1	4459.6148838103
ontime2	4459.6148838103
ontime3	4459.6148838103
ontime6	4459.6148838103
ontime7	4459.6148838103
l1events	175026

2.1.4 Events

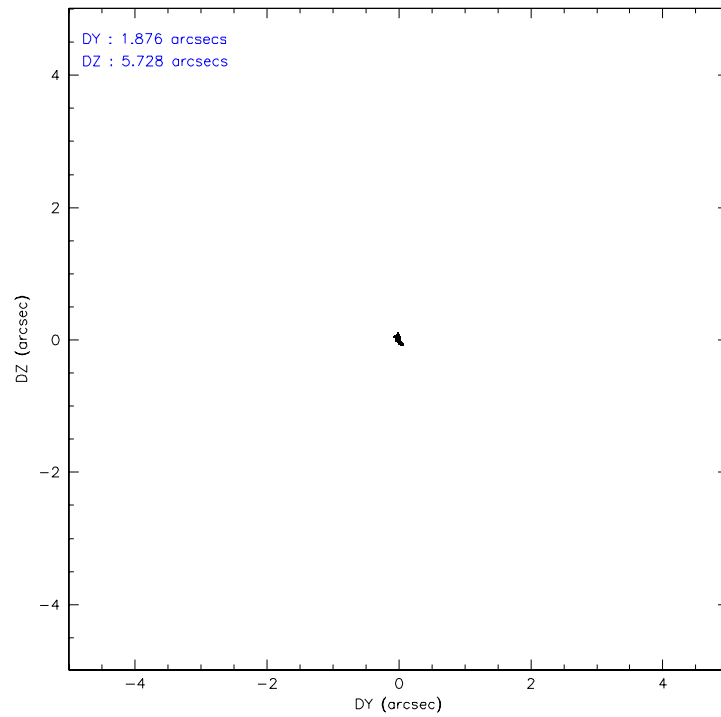
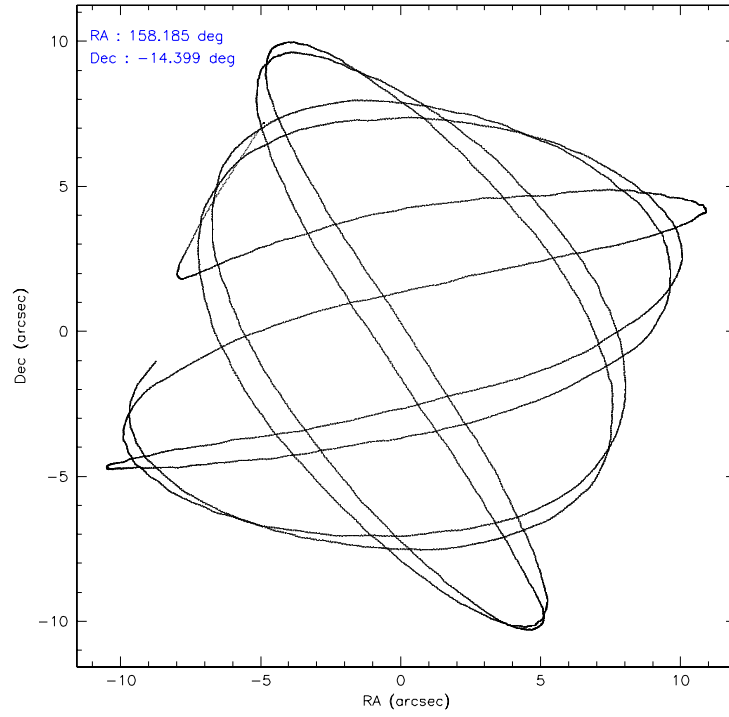
	ccd 0	ccd 1	ccd 2	ccd 3	ccd 6	ccd 7
level 1 events	26194	25981	28897	27238	30487	36229
rejected events	22949	22574	25795	23991	26873	22412
rejected %	87%	86%	89%	88%	88%	61%

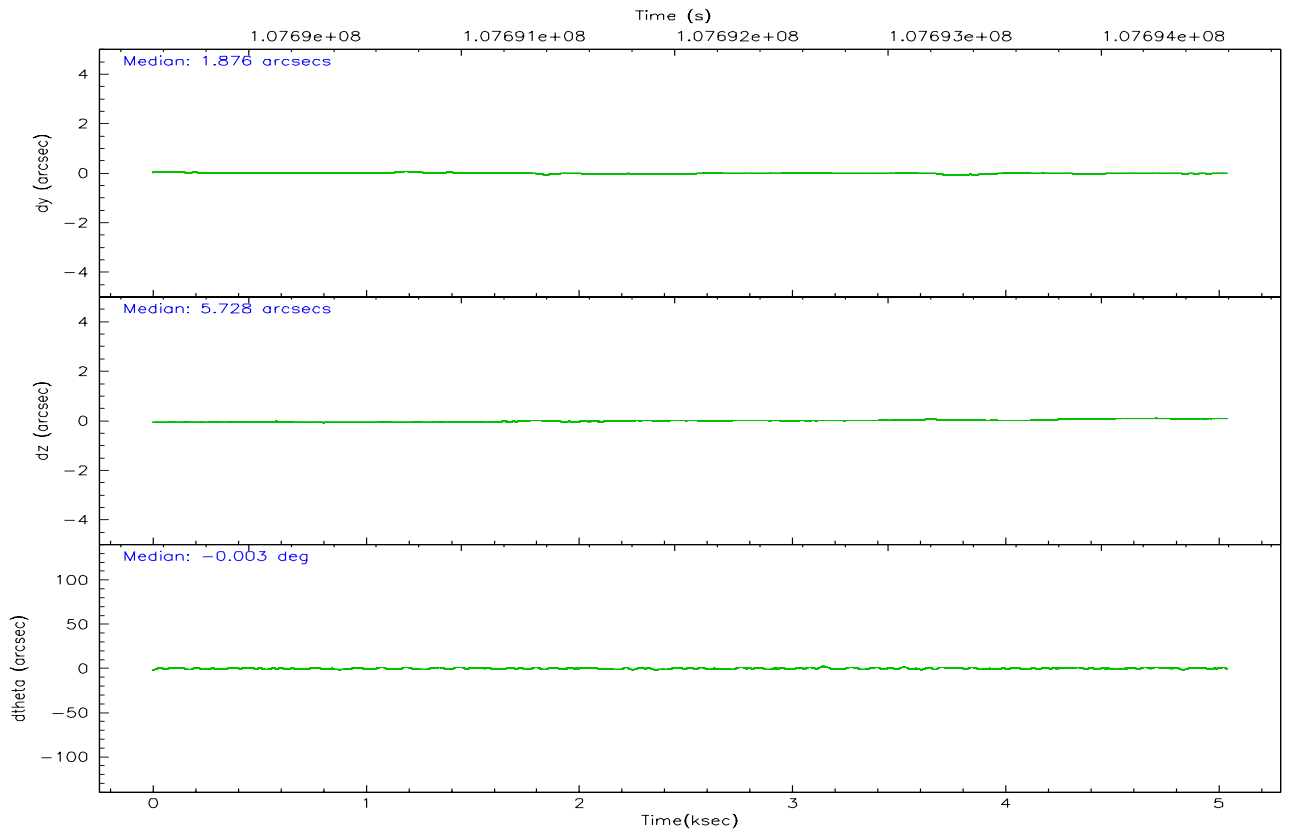
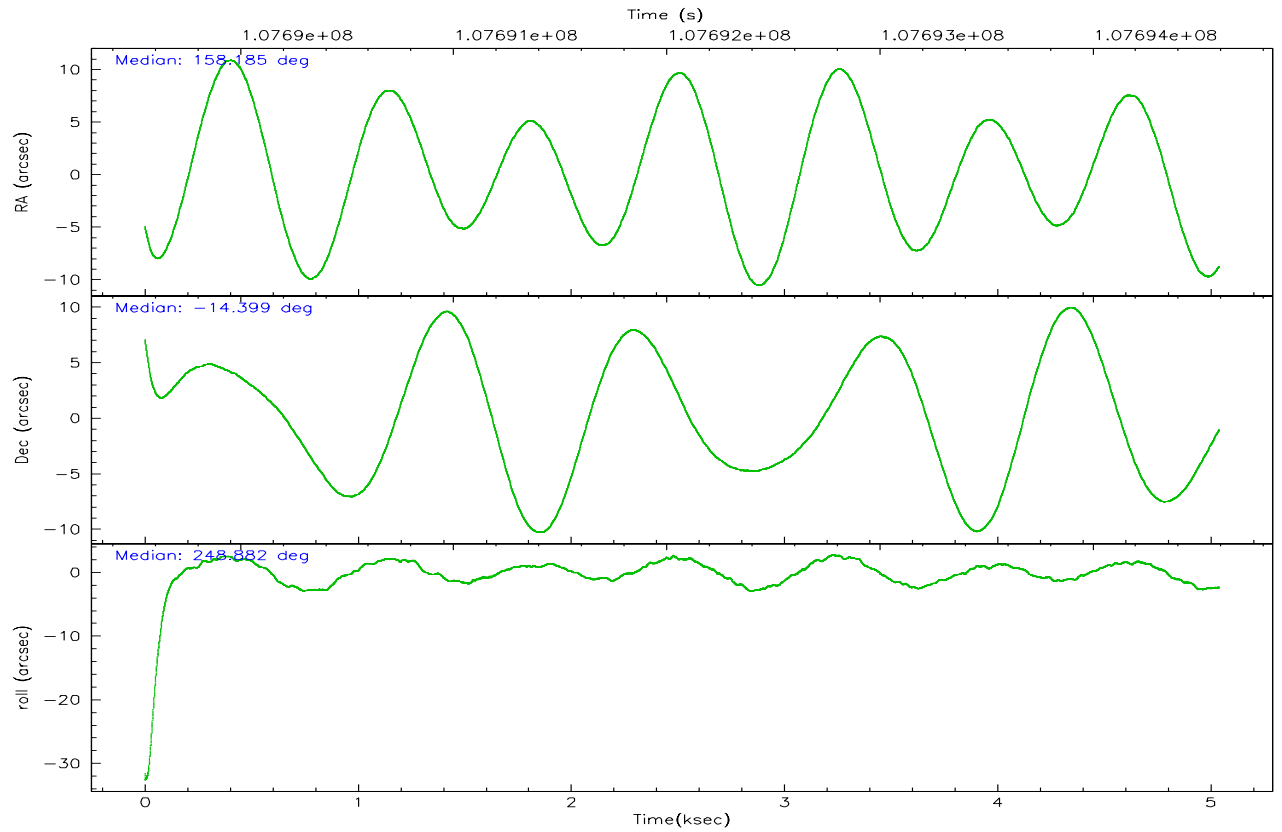
	ccd 0	ccd 1	ccd 2	ccd 3	ccd 6	ccd 7
grade 0 events	1404	1414	1307	1376	1556	789
	5%	5%	4%	5%	5%	2%
grade 1 events	15	12	13	8	13	20
	0%	0%	0%	0%	0%	0%
grade 2 events	694	675	618	664	722	3369
	2%	2%	2%	2%	2%	9%
grade 3 events	313	344	328	290	324	746
	1%	1%	1%	1%	1%	2%
grade 4 events	308	350	308	313	320	746
	1%	1%	1%	1%	1%	2%
grade 5 events	993	1113	974	1077	1229	2474
	3%	4%	3%	3%	4%	6%
grade 6 events	531	629	544	609	701	8177
	2%	2%	1%	2%	2%	22%
grade 7 events	21936	21444	24805	22901	25622	19908
	83%	82%	85%	84%	84%	54%

2.2 Compared Parameters

Parameter	Planned	Actual	Parameter	Planned	Actual
Instrument	ACIS	ACIS	Obspar format version number	6	6
Detector	ACIS-012367	ACIS-012367	Obspar file type	PREDICTED	ACTUAL
Grating	NONE	NONE	Obspar update status	NONE	UPDATED
Data mode	FAINT	FAINT	Number of optional ACIS chips dropped	0	0
Observation mode	POINTING	POINTING	On-chip summing requested	N	N
Pointing RA	158.180516	158.1848340720049	Subarray requested	NONE	NONE
Pointing Dec	-14.371988	-14.39900043524301	Alternating exposures requested	N	N
Pointing Roll	248.677900	248.887608152781	Primary exposure time	0.000000	3.2
SIM focus pos (mm)	-0.782348	-0.7809083437167272			
SIM defocus (mm)	0	0.001439871863259334			
SIM translation stage pos (mm)	-233.592463	-233.5874344608287			
SIM translation stage offset (mm)	0	-0.005018542100998502			
Observation start time	107690091.184000	107688958.14109			
Observation start date	2001-05-31T09:53:47	2001-05-31T09:35:58			
Observation end time	107694591.184000	107695176.30384			
Observation end date	2001-05-31T11:08:47	2001-05-31T11:19:36			
Read mode	TIMED	TIMED			

2.3 Aspect



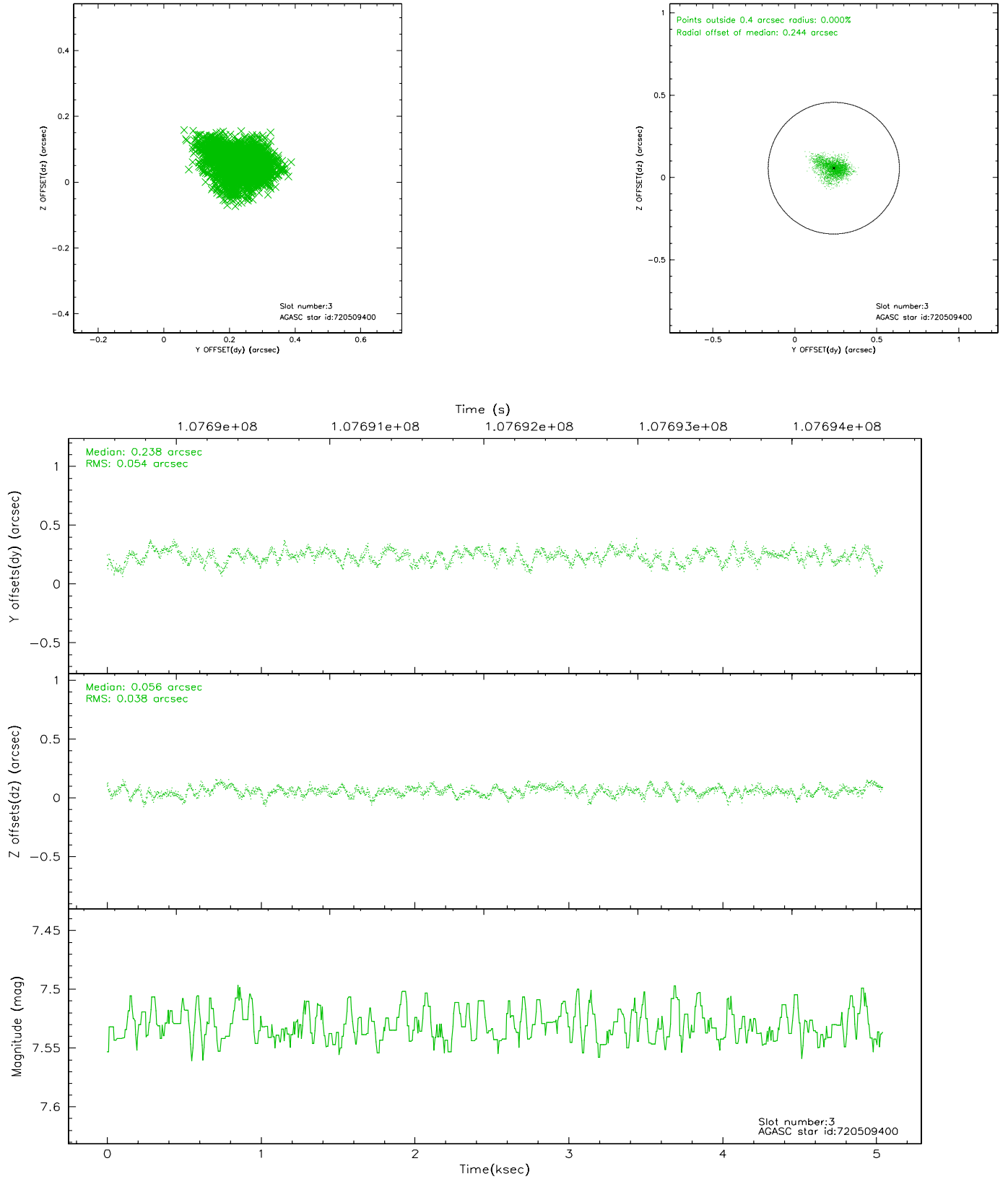


Slot Statistics

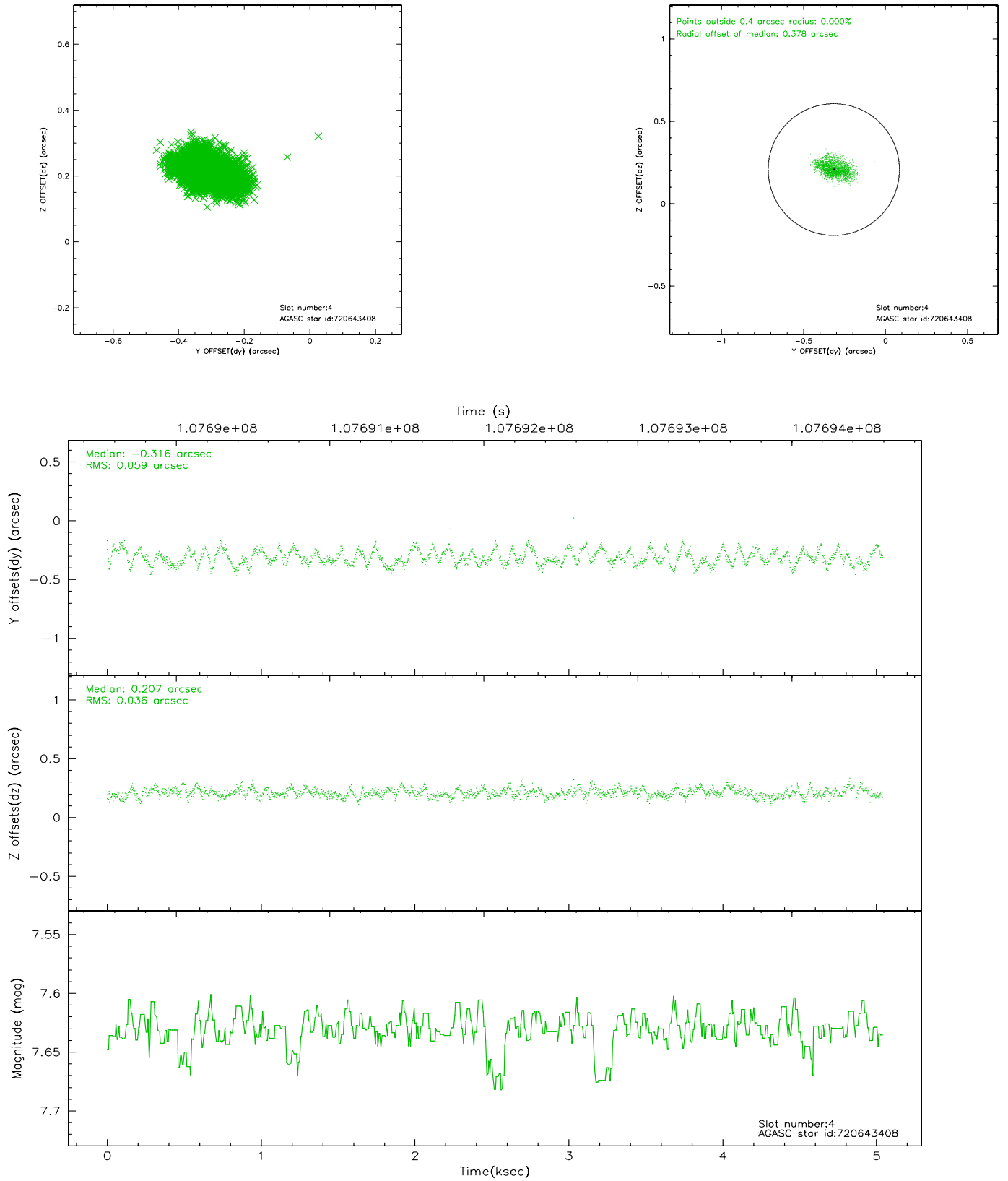
slot	status	id	mag	n_pts	med_dy	med_dz	dr1	dr2	ra	dec	mean_y	mean_z
0	FID	ACIS-I-2	7.15	1230	-0.026	-0.040	0.009	0.015	0.000000	0.000000	-756.24	-835.50
1	FID	ACIS-I-4	7.18	1230	-0.056	0.035	0.005	0.009	0.000000	0.000000	2157.23	1070.17
2	FID	ACIS-I-5	7.23	1230	-0.019	0.075	0.008	0.014	0.000000	0.000000	-1808.52	1069.40
3	GUIDE	720509400	7.53	2460	0.238	0.056	0.070	0.116	157.907798	-14.885082	2066.57	-211.02
4	GUIDE	720643408	7.63	2459	-0.316	0.207	0.075	0.117	158.931051	-13.956644	-2341.95	1901.22
5	GUIDE	720509240	8.34	2460	0.046	0.051	0.055	0.089	158.109581	-14.390615	151.62	-204.41
6	GUIDE	720508296	8.41	2459	-0.000	-0.115	0.060	0.102	157.542743	-14.613903	1622.33	-1751.13
7	GUIDE	720510528	8.94	2458	0.030	-0.199	0.063	0.106	158.177312	-14.502486	442.43	160.30

2.4 Star Slots

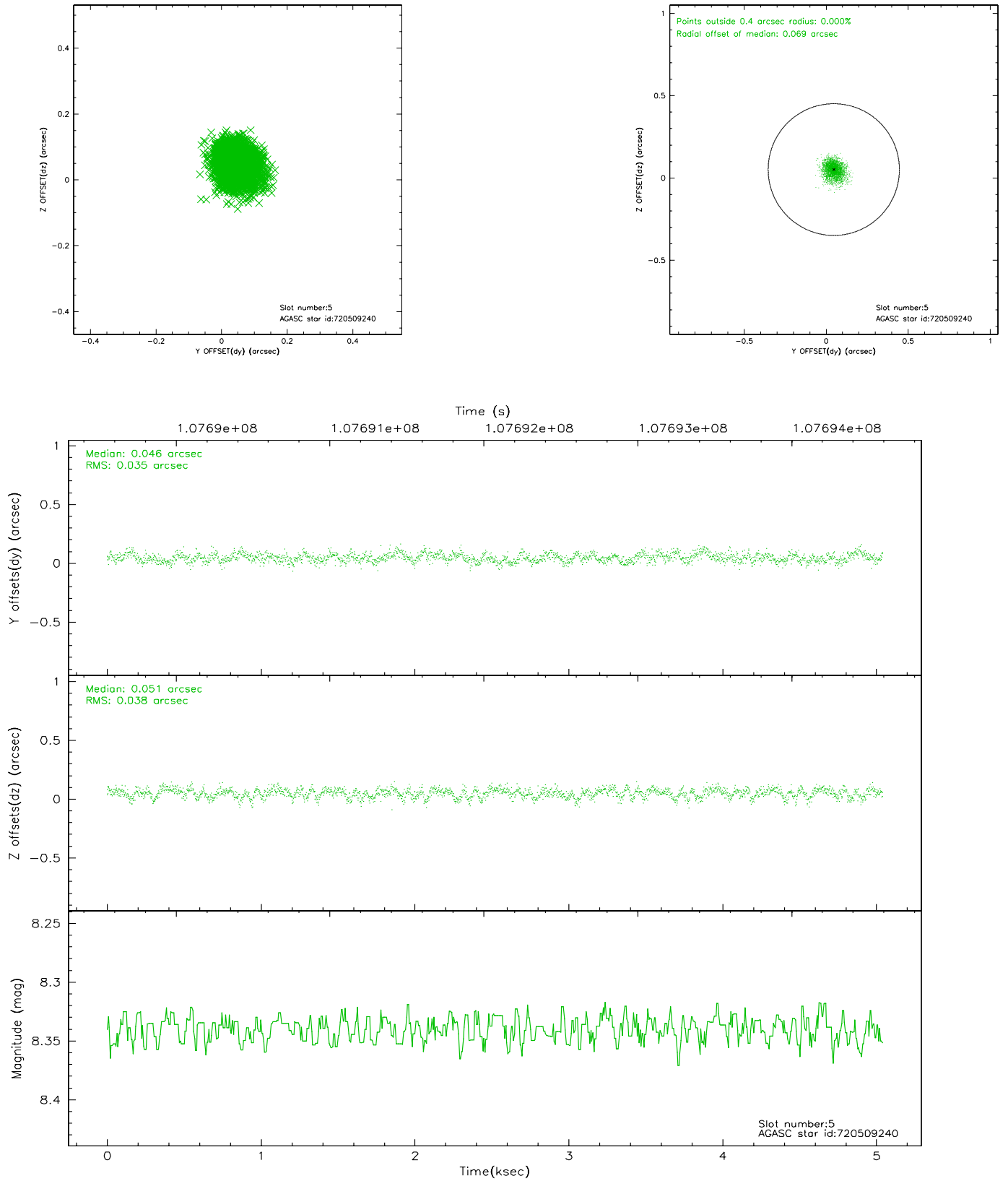
2.4.1 Slot 3



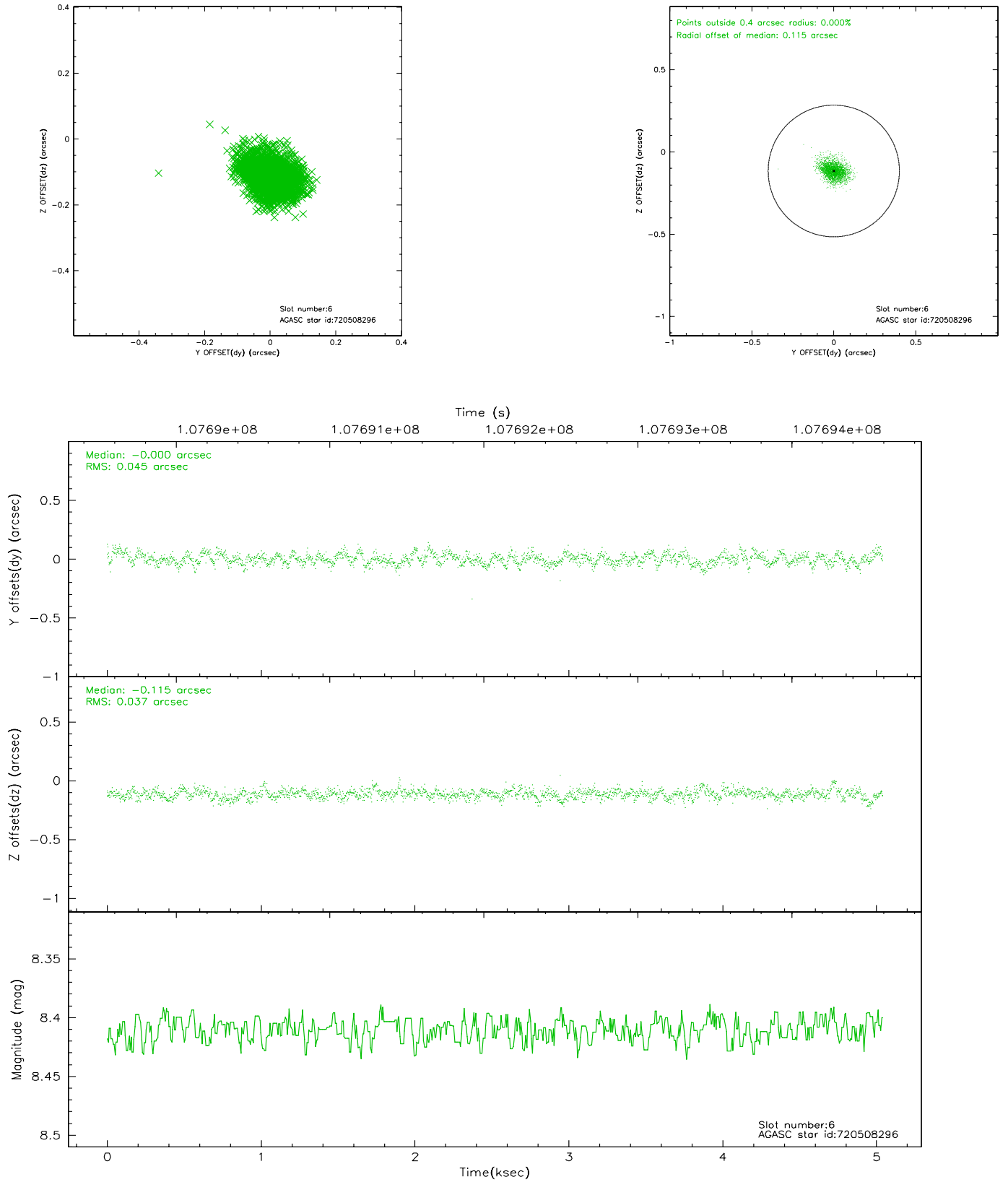
2.4.2 Slot 4



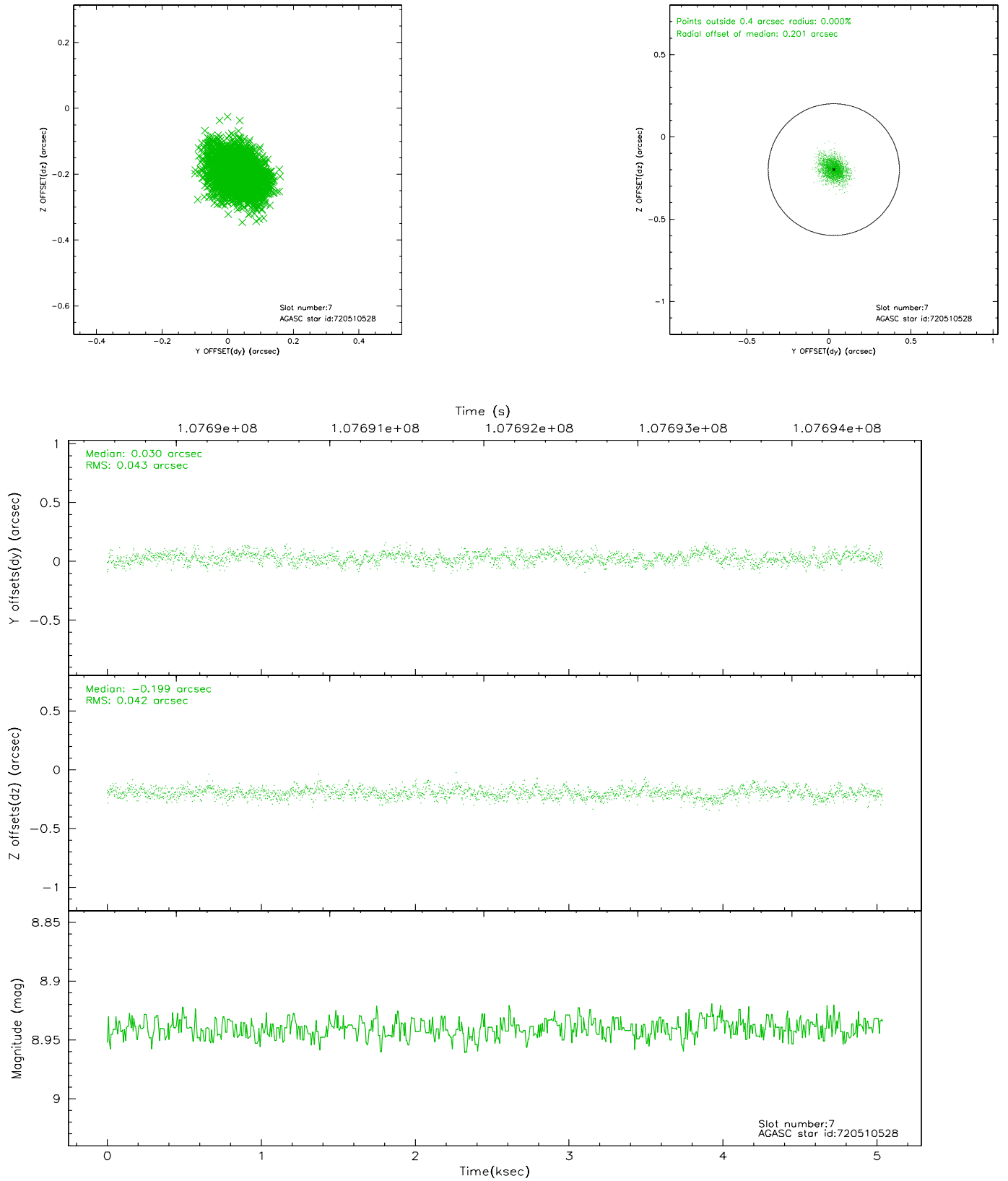
2.4.3 Slot 5



2.4.4 Slot 6

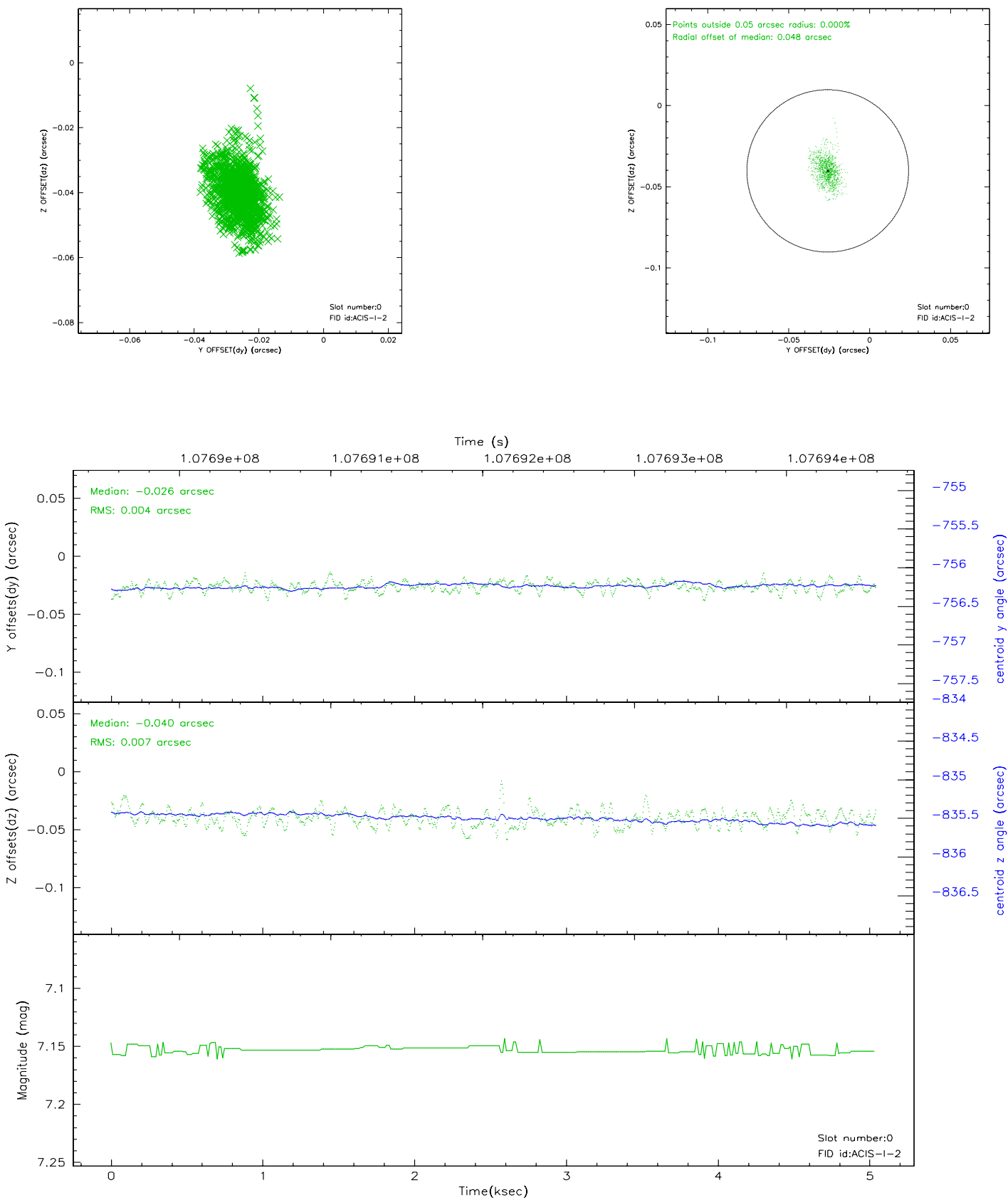


2.4.5 Slot 7

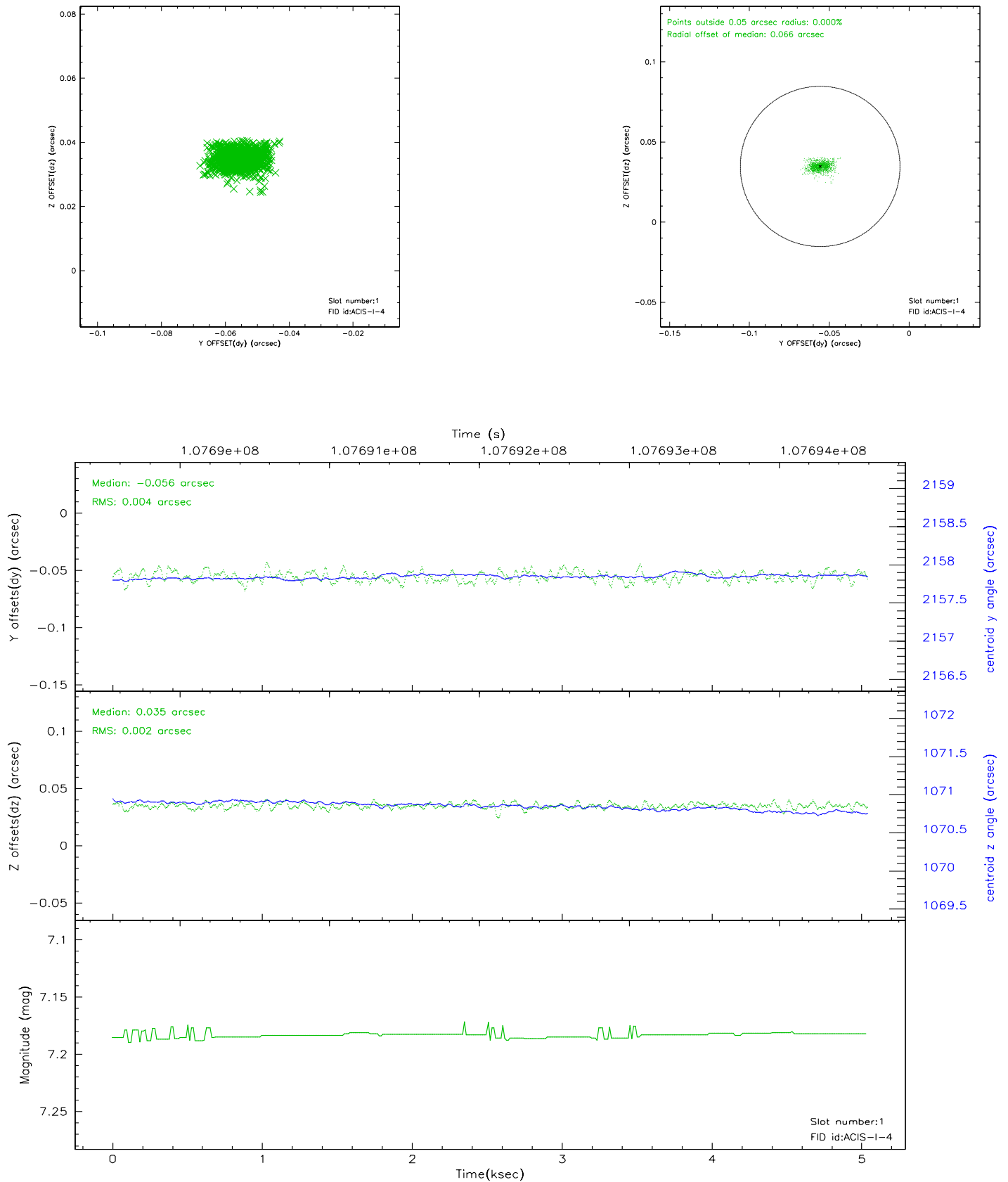


2.5 FID Slots

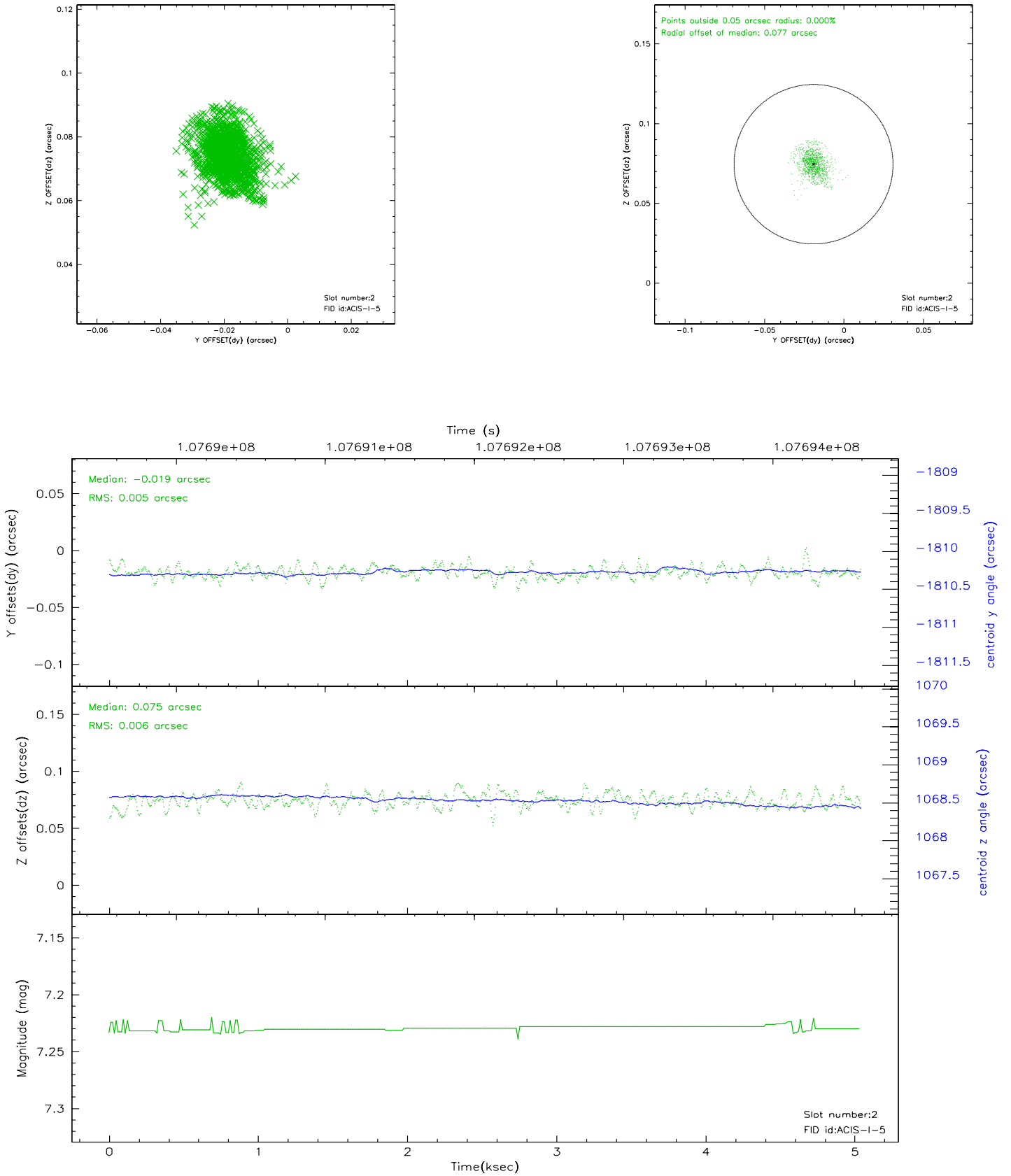
2.5.1 Slot 0



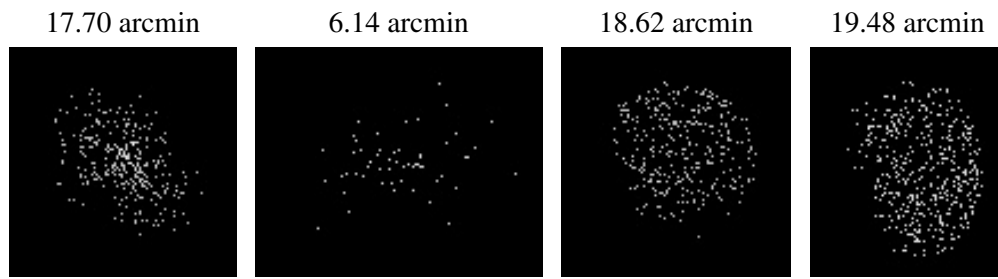
2.5.2 Slot 1



2.5.3 Slot 2



3 Point Sources



A Summary

A.1 Status

V&V Scientist	Jen Lauer
V&V Date (YYYY-MM-DD)	2006.11.27
V&V Edition	1
V&V Disposition and Status	OK
V&V Charge Time	4.5

A.2 Comments