

# V&V Reference Report

## L2 ASCDS Version : 7.6.9

Observation 2189 - L2 Version 001  
Chandra X-Ray Center

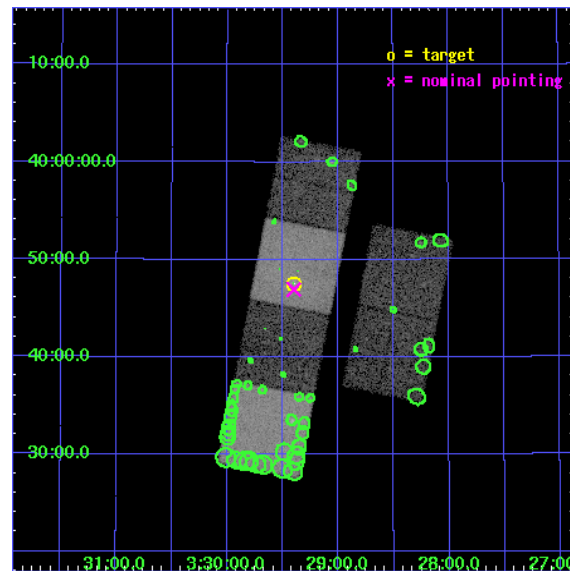
L2 Processing Date : Nov 6 2006

## Contents

<b>1</b>	<b>Front</b>	<b>2</b>
<b>2</b>	<b>OBI</b>	<b>3</b>
2.1	OBI . . . . .	3
2.1.1	Images . . . . .	3
2.1.2	Bias . . . . .	3
2.1.3	Parameters . . . . .	4
2.1.4	Events . . . . .	4
2.2	Compared Parameters . . . . .	5
2.3	Aspect . . . . .	6
2.4	Star Slots . . . . .	9
2.4.1	Slot 3 . . . . .	9
2.4.2	Slot 4 . . . . .	10
2.4.3	Slot 5 . . . . .	11
2.4.4	Slot 6 . . . . .	12
2.4.5	Slot 7 . . . . .	13
2.5	FID Slots . . . . .	14
2.5.1	Slot 0 . . . . .	14
2.5.2	Slot 1 . . . . .	15
2.5.3	Slot 2 . . . . .	16
<b>3</b>	<b>Point Sources</b>	<b>17</b>
<b>A</b>	<b>Summary</b>	<b>18</b>
A.1	Status . . . . .	18
A.2	Comments . . . . .	18

# 1 Front

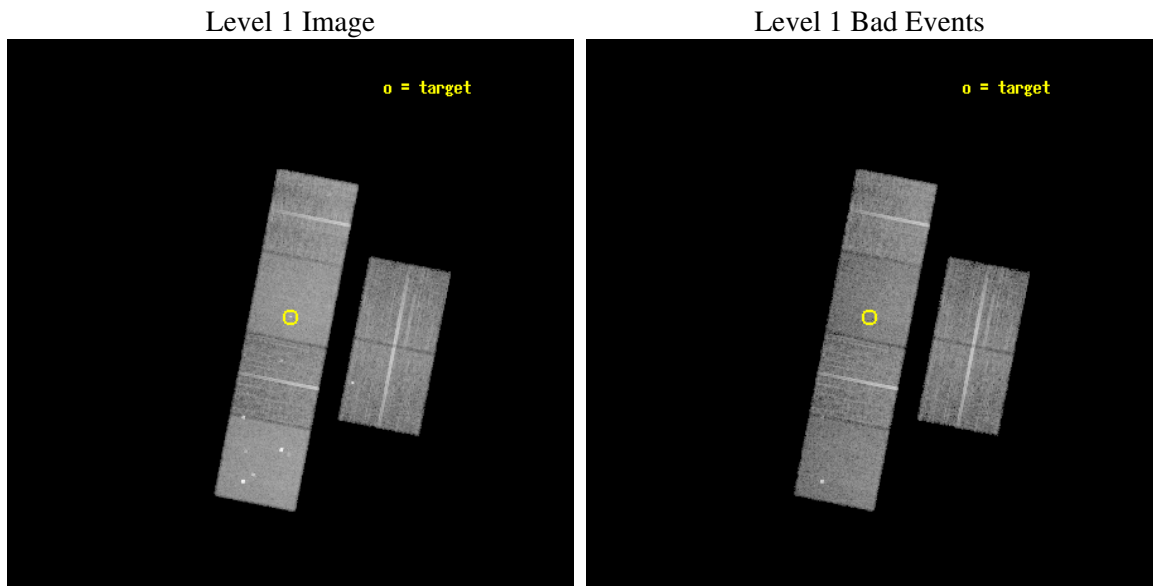
seq_num	700379
obs_id	2189
title	HUNTING THE AGN CORES AND JETS IN FRI RADIO GALAXIES
observer	Prof Diana Worrall
object	B2 0326+39
dtcycle	0
cycle	P
ra_targ	52.349583
dec_targ	39.792222
ra_nom	52.349765568111
dec_nom	39.782394952461
roll_nom	281.11781419284
revision	2
ontime	15824.000014737
livetime	15623.626998482
ontime2	15824.000014737
ontime3	15824.000014737
ontime5	15824.000014737
ontime6	15824.000014737
ontime7	15824.000014737
ontime8	15820.759054482
l2events	158164



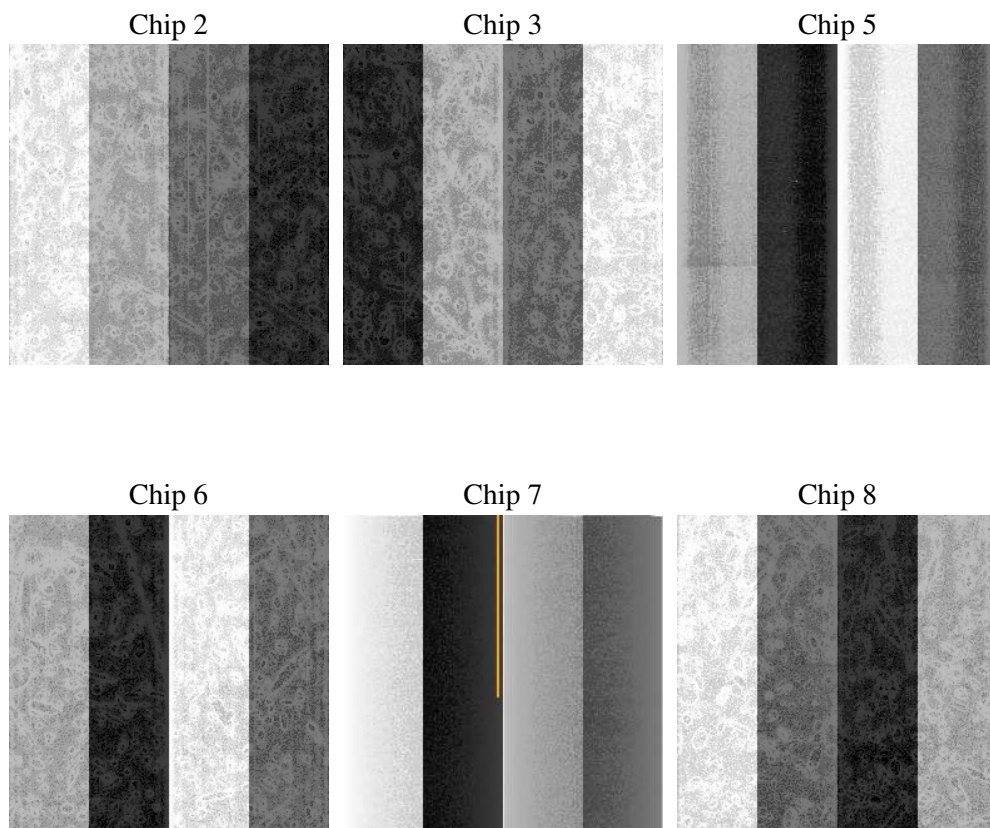
## 2 OBI

### 2.1 OBI

#### 2.1.1 Images



#### 2.1.2 Bias



### 2.1.3 Parameters

obi_num	0
ascdsver	7.6.9
caldbver	3.2.3
date	2006-11-06T14:32:38
revision	2

sched_exp_time	16100.000000
ontime	15829.036569506
ontime2	15829.036519691
ontime3	15829.036549598
ontime5	15829.036549598
ontime6	15829.036549598
ontime7	15829.036569506
ontime8	15825.795449749
l1events	703308

### 2.1.4 Events

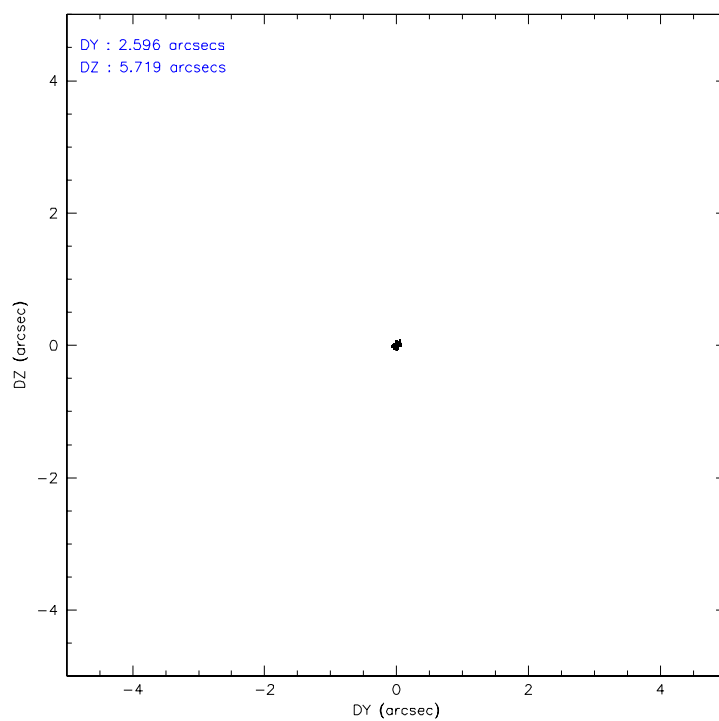
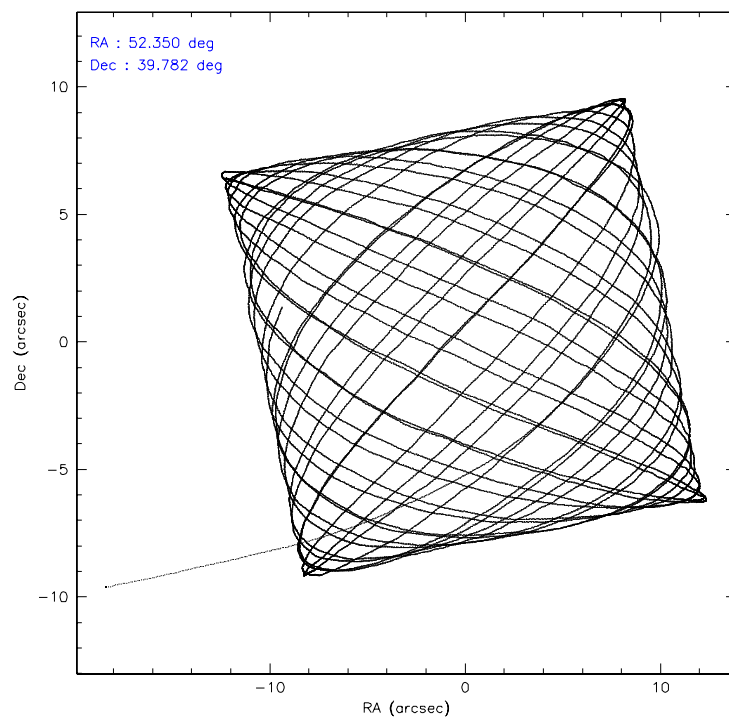
	ccd 2	ccd 3	ccd 5	ccd 6	ccd 7	ccd 8
level 1 events	99462	95533	147371	99715	134403	126824
rejected events	87790	84671	77930	87988	78031	102233
rejected %	88%	88%	52%	88%	58%	80%

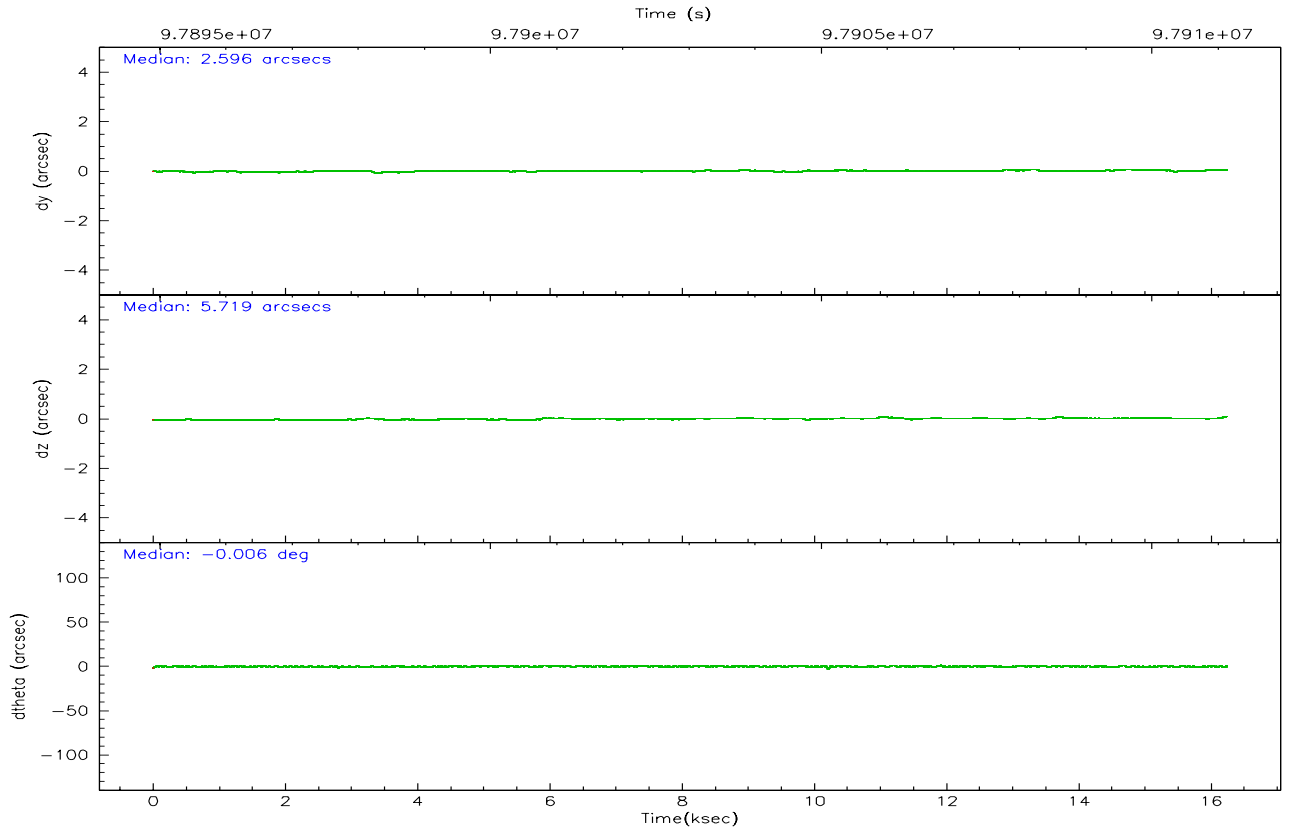
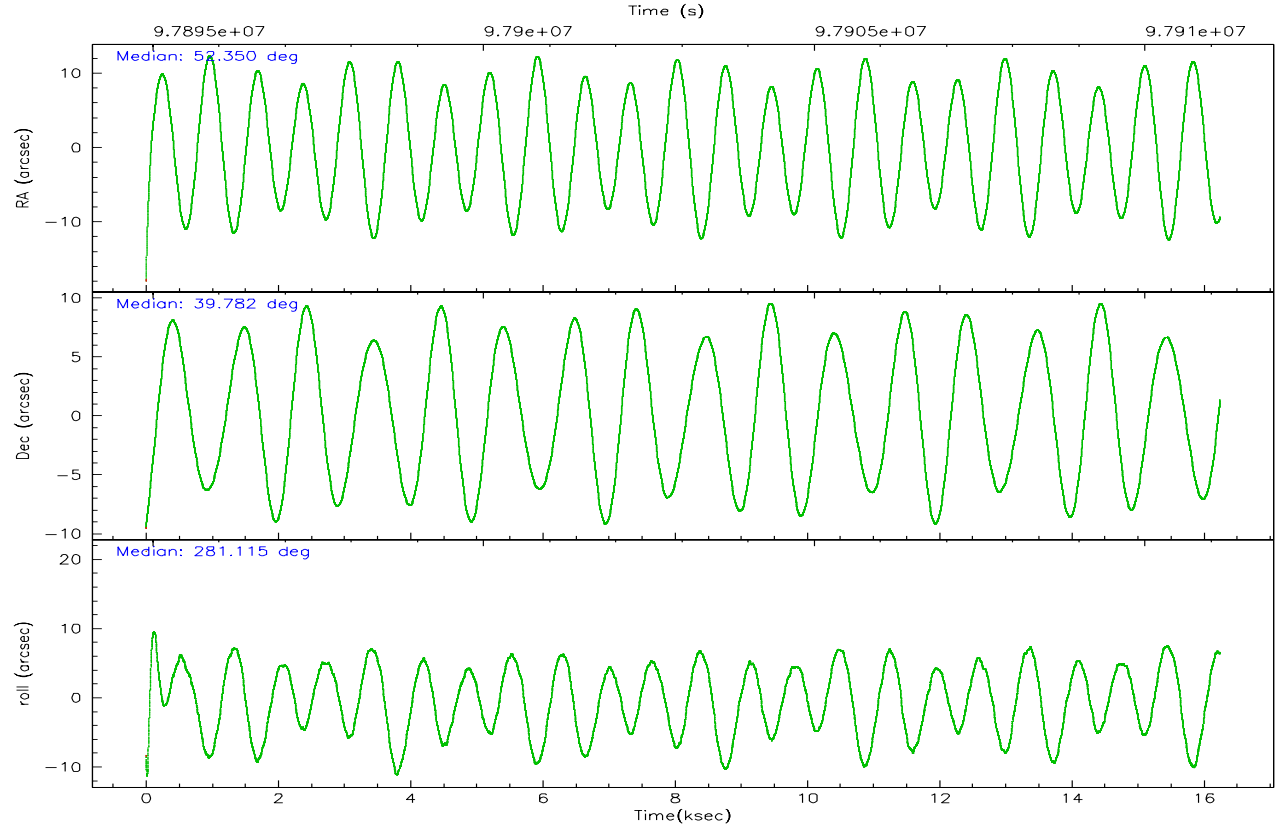
	ccd 2	ccd 3	ccd 5	ccd 6	ccd 7	ccd 8
grade 0 events	5225	4740	8262	5170	4530	7877
	5%	4%	5%	5%	3%	6%
grade 1 events	38	37	136	55	87	71
	0%	0%	0%	0%	0%	0%
grade 2 events	2389	2128	20721	2197	13465	5162
	2%	2%	14%	2%	10%	4%
grade 3 events	1083	1007	2016	1122	3333	2570
	1%	1%	1%	1%	2%	2%
grade 4 events	1053	1021	1623	1063	3298	2408
	1%	1%	1%	1%	2%	1%
grade 5 events	3401	3651	7095	4124	8435	5101
	3%	3%	4%	4%	6%	4%
grade 6 events	1924	1972	36838	2178	31760	6576
	1%	2%	24%	2%	23%	5%
grade 7 events	84349	80977	70680	83806	69495	97059
	84%	84%	47%	84%	51%	76%

## 2.2 Compared Parameters

Parameter	Planned	Actual	Parameter	Planned	Actual
Instrument	ACIS	ACIS	Obspar format version number	6	6
Detector	ACIS-235678	ACIS-235678	Obspar file type	PREDICTED	ACTUAL
Grating	NONE	NONE	Obspar update status	NONE	UPDATED
Data mode	FAINT	FAINT	Number of optional ACIS chips dropped	0	0
Observation mode	POINTING	POINTING	On-chip summing requested	N	N
Pointing RA	52.326136	52.34976556811122	Subarray requested	NONE	NONE
Pointing Dec	39.802822	39.78239495246089	Alternating exposures requested	N	N
Pointing Roll	280.976336	281.1178141928374	Primary exposure time	0.000000	3.2
SIM focus pos (mm)	-0.684267	-0.6828225247311905			
SIM defocus (mm)	0	0.001444936568705701			
SIM translation stage pos (mm)	-190.132523	-190.1400660498719			
SIM translation stage offset (mm)	0	0.00754346686406393			
Observation start time	97895040.184000	97894040.849233			
Observation start date	2001-02-07T01:02:56	2001-02-07T00:47:20			
Observation end time	97911140.184000	97911627.79991101			
Observation end date	2001-02-07T05:31:16	2001-02-07T05:40:27			
Read mode	TIMED	TIMED			

## 2.3 Aspect





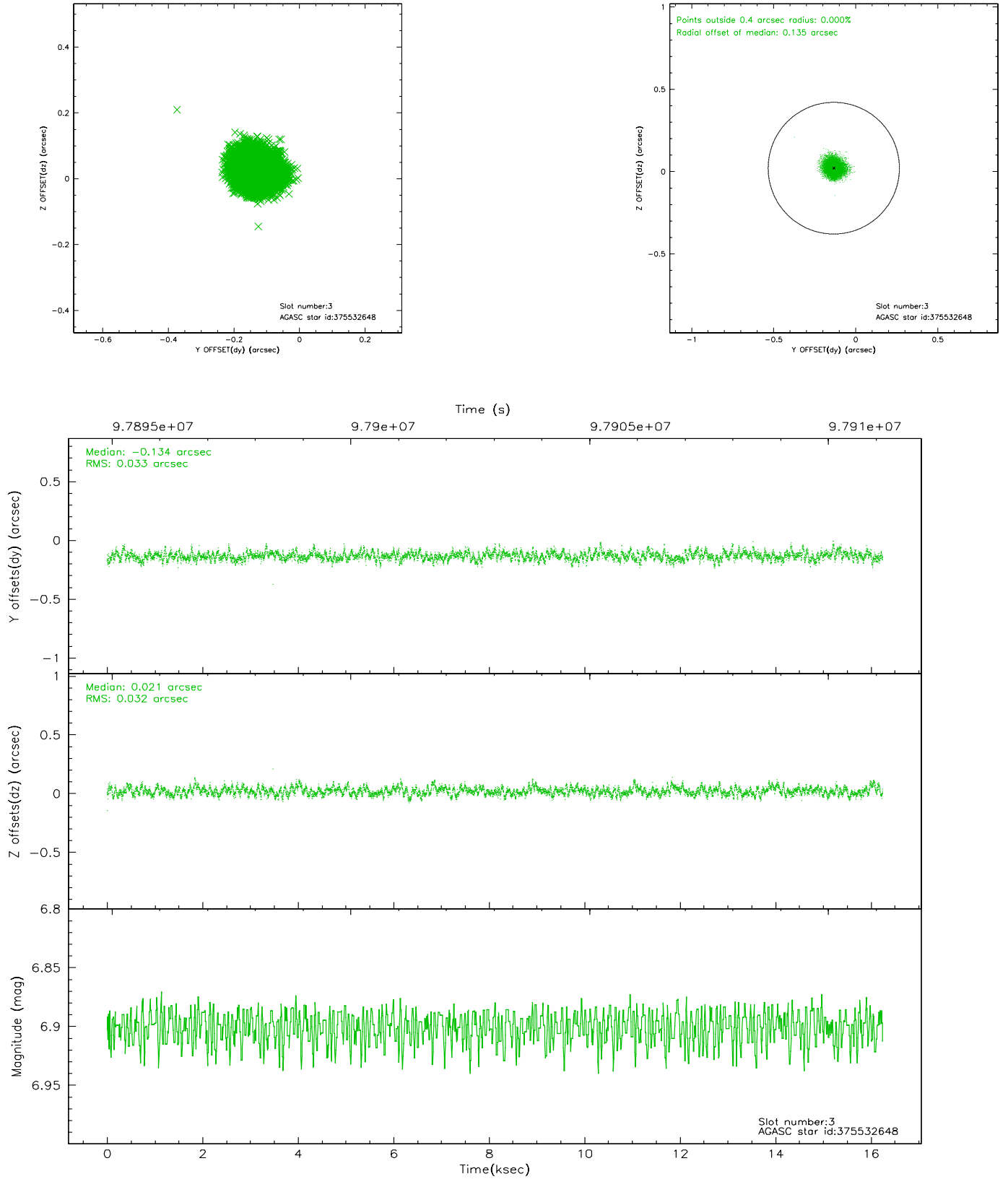
### Slot Statistics

slot	status	id	mag	n_pts	med_dy	med_dz	dr1	dr2	ra	dec	mean_y	mean_z
0	FID	ACIS-S-1	7.19	3963	-0.018	-0.014	0.007	0.013	0.000000	0.000000	940.80	-1722.48
1	FID	ACIS-S-5	7.24	3963	0.030	-0.003	0.007	0.012	0.000000	0.000000	-1808.01	174.80
2	FID	ACIS-S-6	7.35	3963	-0.033	0.029	0.008	0.013	0.000000	0.000000	406.04	819.10
3	GUIDE	375532648	6.90	7926	-0.134	0.021	0.049	0.079	52.125802	40.171032	-1406.87	-288.94
4	GUIDE	375533304	8.96	7923	-0.001	-0.125	0.075	0.120	51.833632	40.116937	-1372.03	-1115.69
5	GUIDE	375669392	8.71	7922	0.149	0.098	0.065	0.103	52.767011	39.644684	788.70	1091.67
6	GUIDE	375530800	9.44	7922	-0.026	-0.028	0.073	0.118	52.386399	40.002494	-673.96	299.70
7	GUIDE	375654176	9.50	7850	0.015	0.033	0.088	0.143	52.558578	40.102551	-938.22	833.58

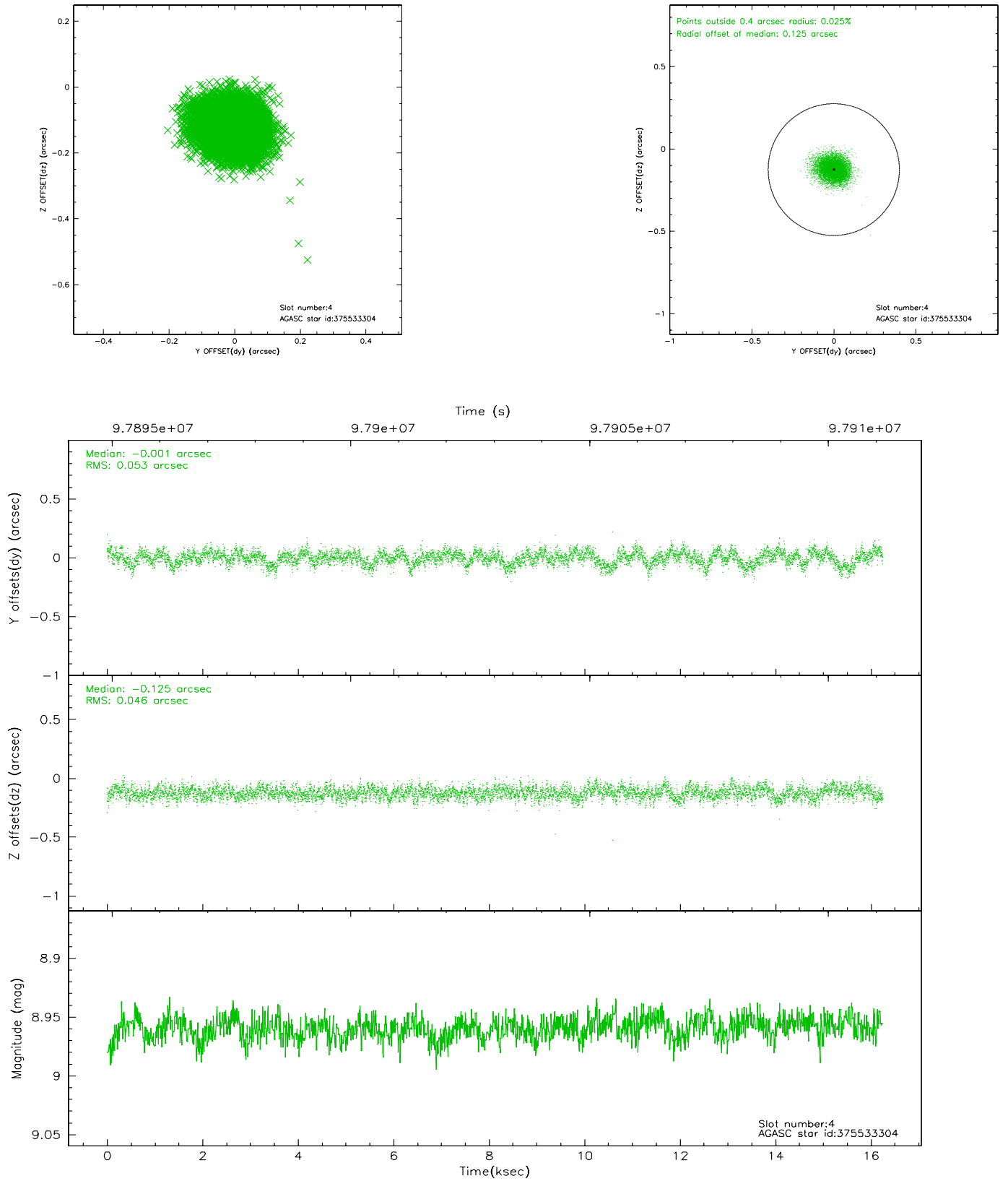


## 2.4 Star Slots

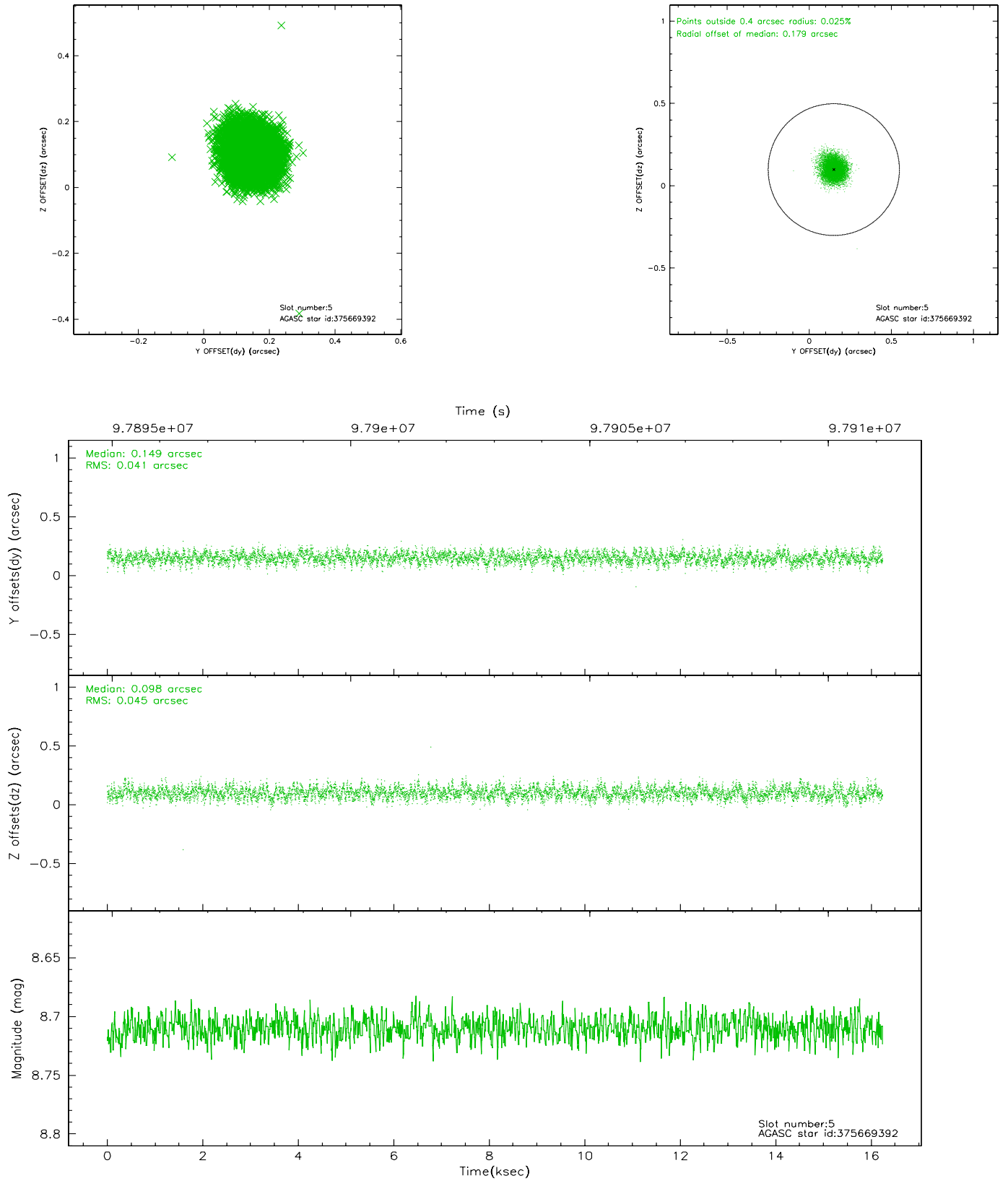
### 2.4.1 Slot 3



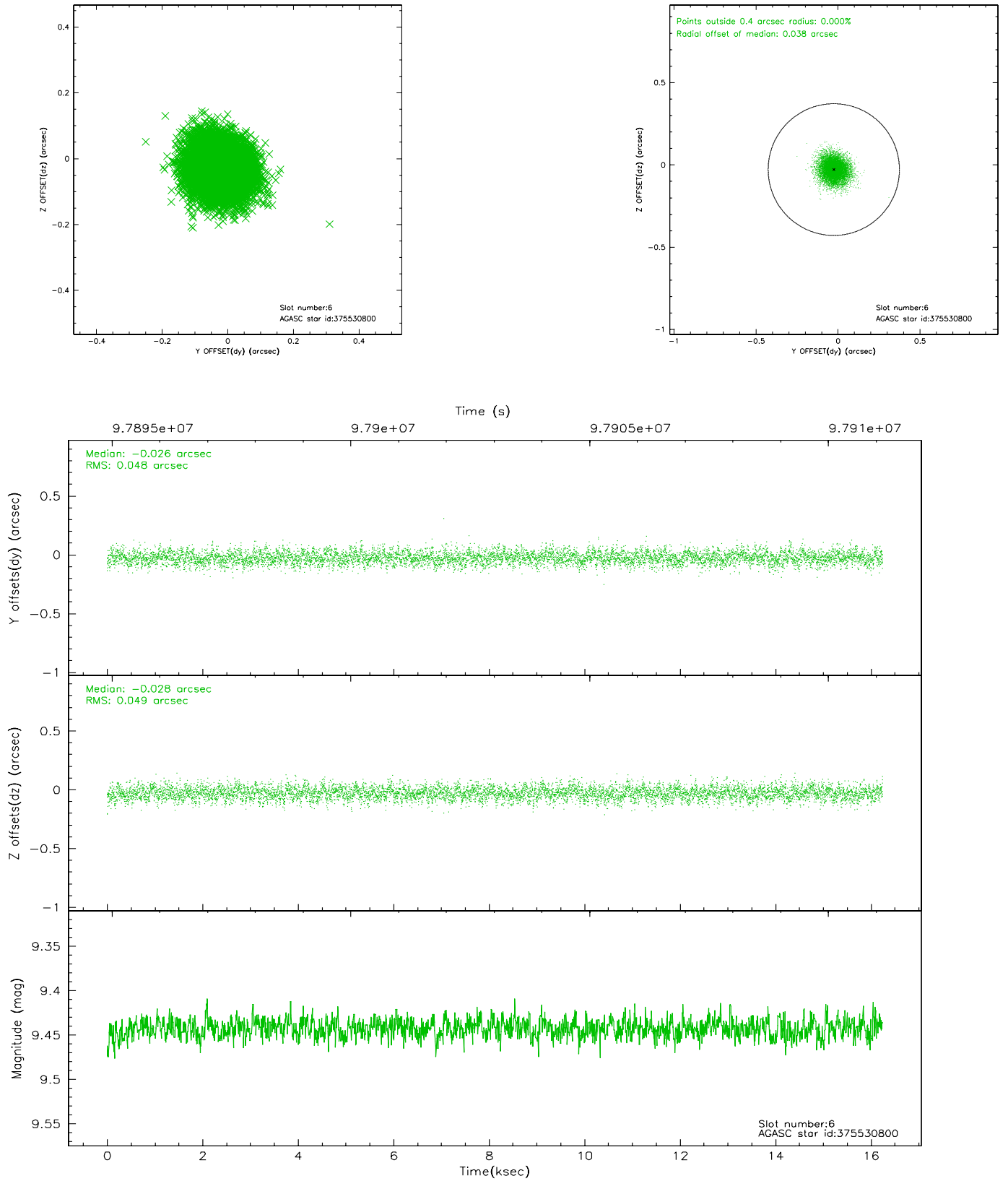
## 2.4.2 Slot 4



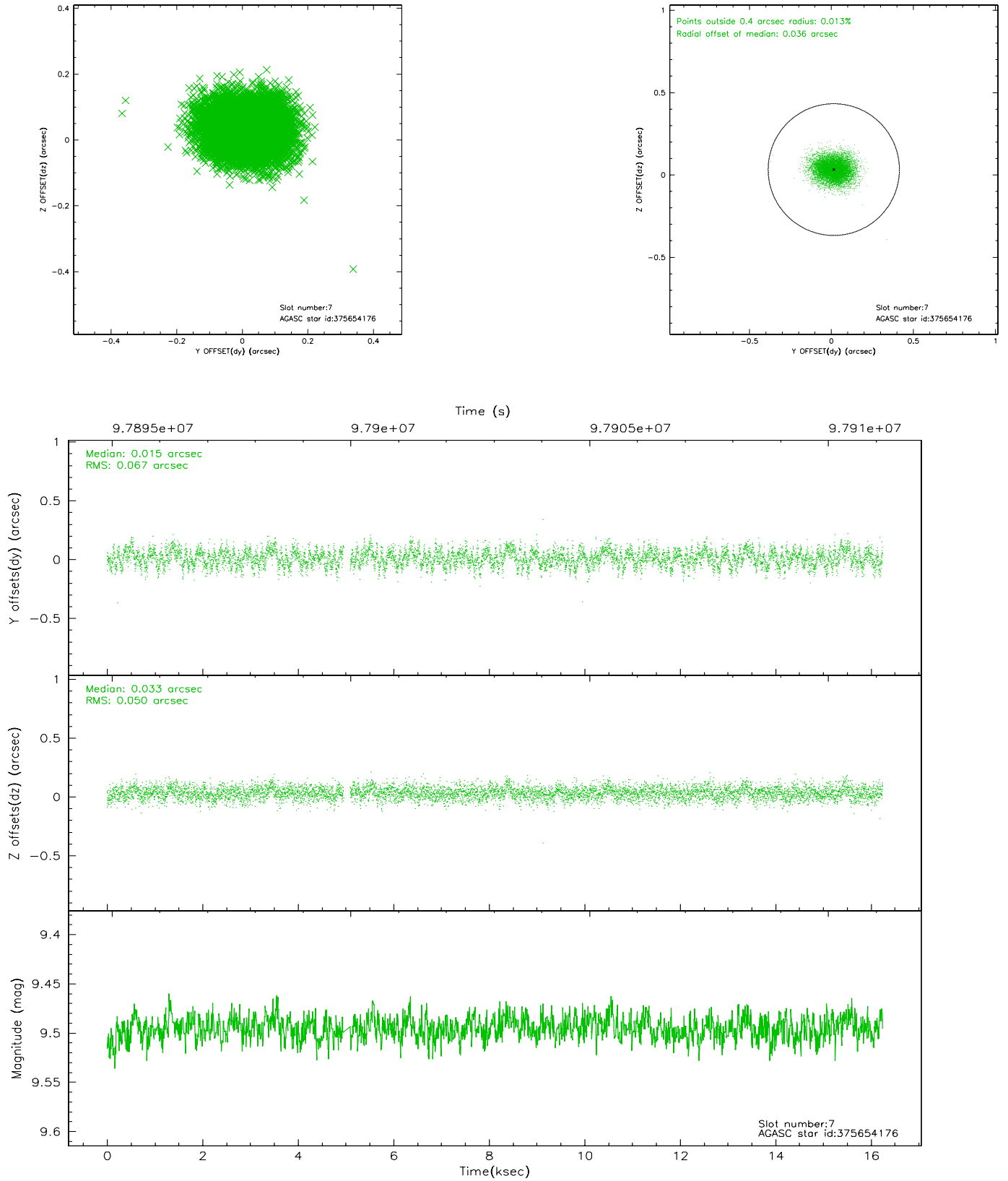
### 2.4.3 Slot 5



## 2.4.4 Slot 6

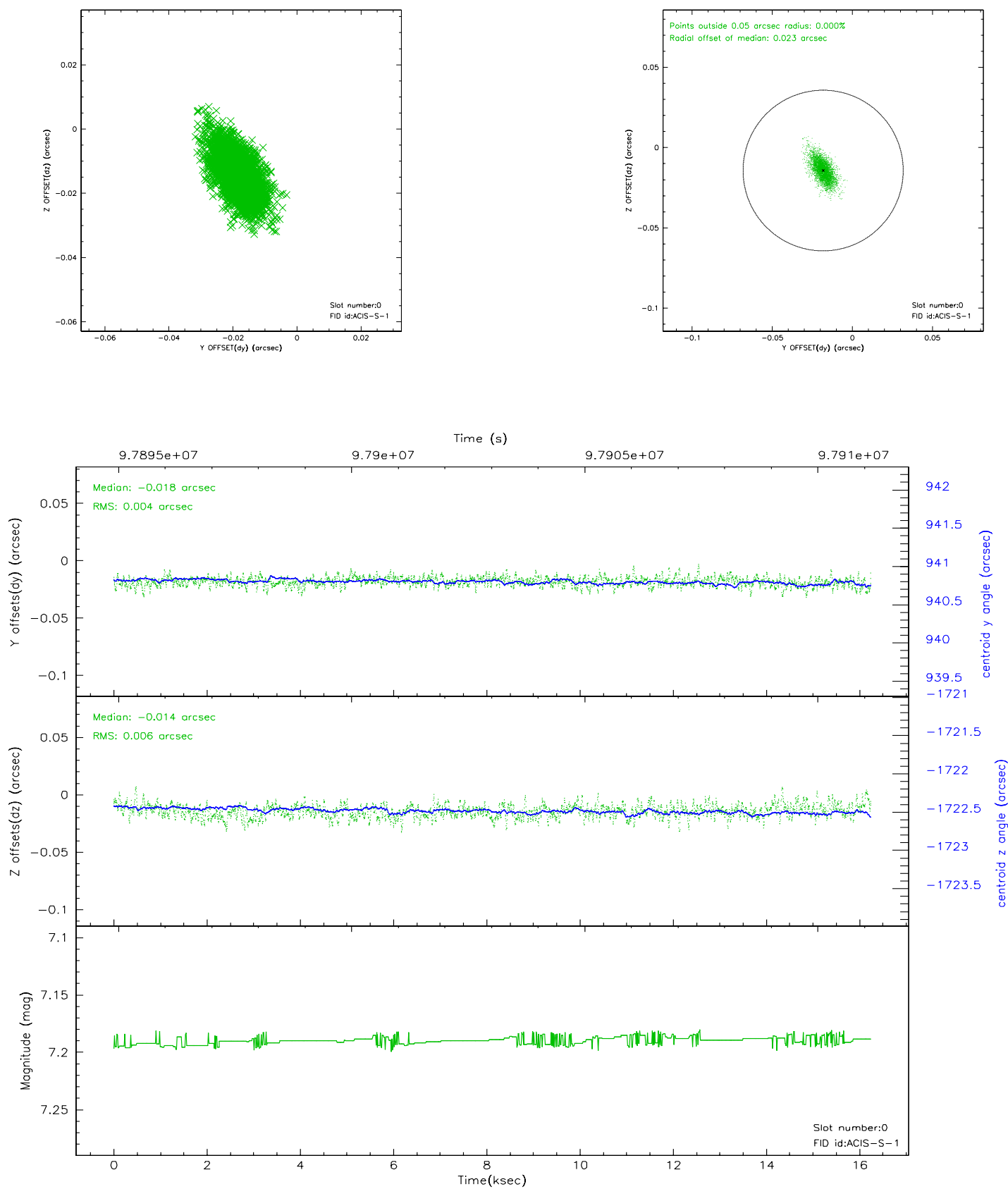


## 2.4.5 Slot 7

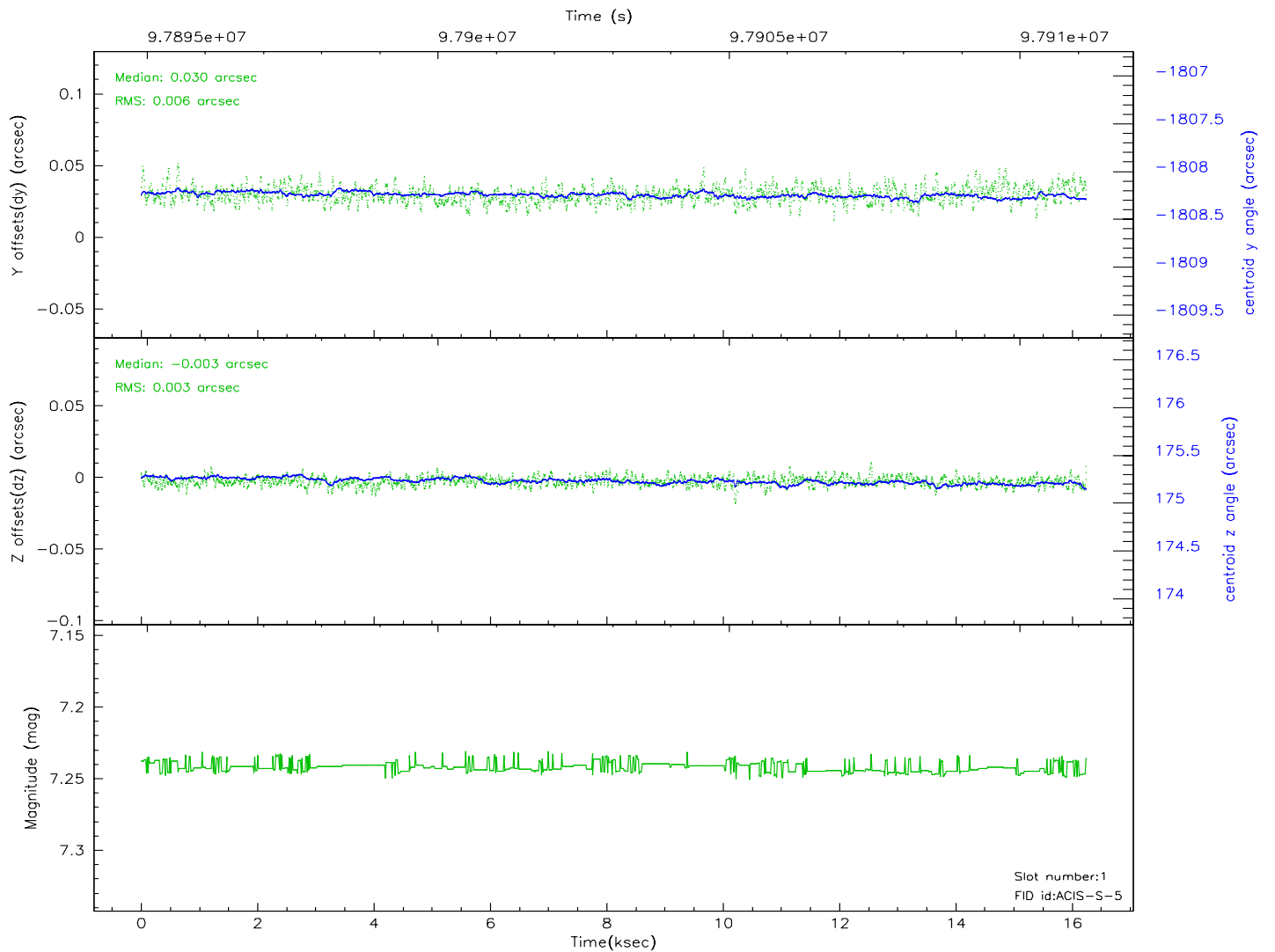
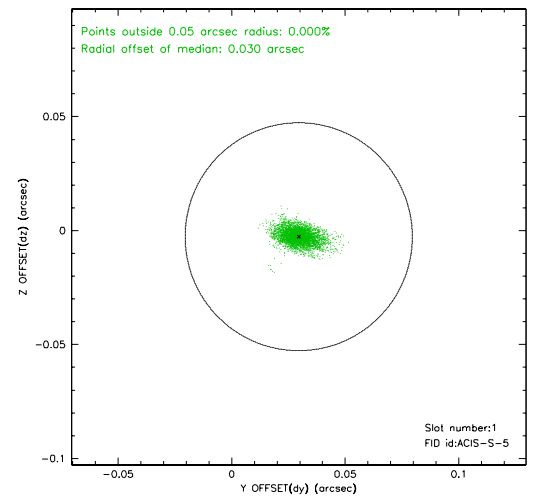
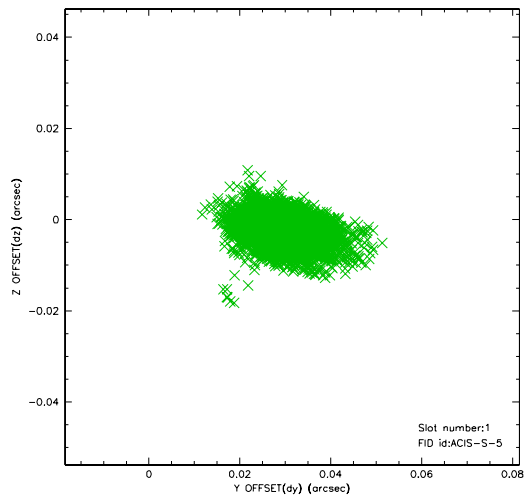


## 2.5 FID Slots

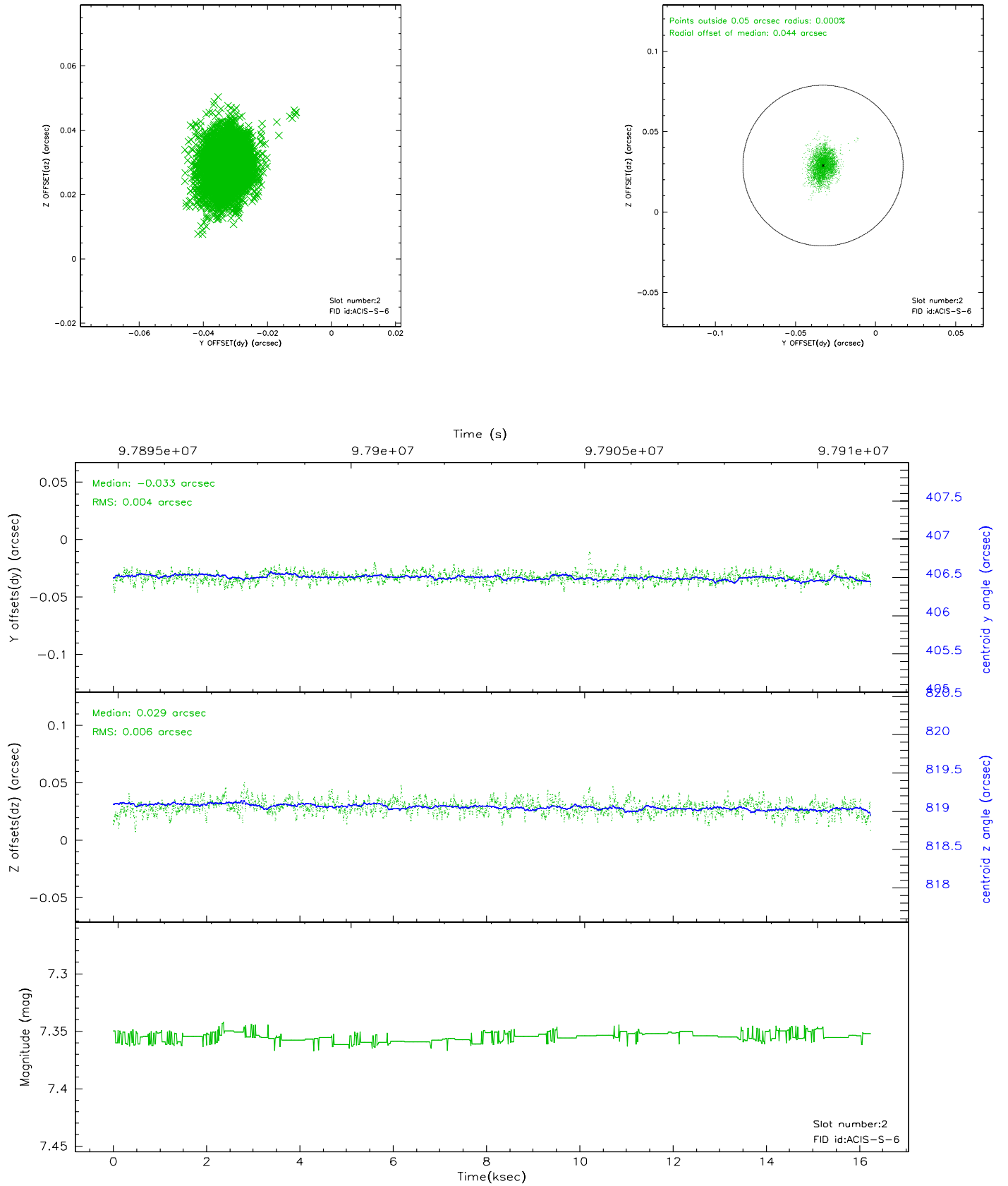
### 2.5.1 Slot 0



## 2.5.2 Slot 1

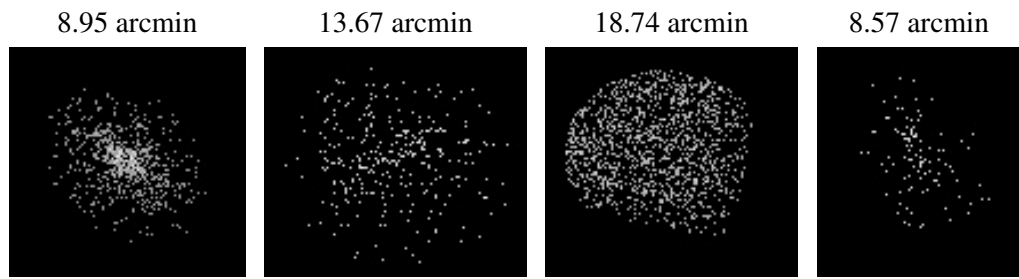


### 2.5.3 Slot 2





### 3 Point Sources



## A Summary

### A.1 Status

V&V Scientist	Beth Sundheim
V&V Date (YYYY-MM-DD)	2006.11.06
V&V Edition	1
V&V Disposition and Status	OK
V&V Charge Time	15.824

### A.2 Comments