

V&V Reference Report

L2 ASCDS Version : 7.6.9

Observation 1889 - L2 Version 002
Chandra X-Ray Center

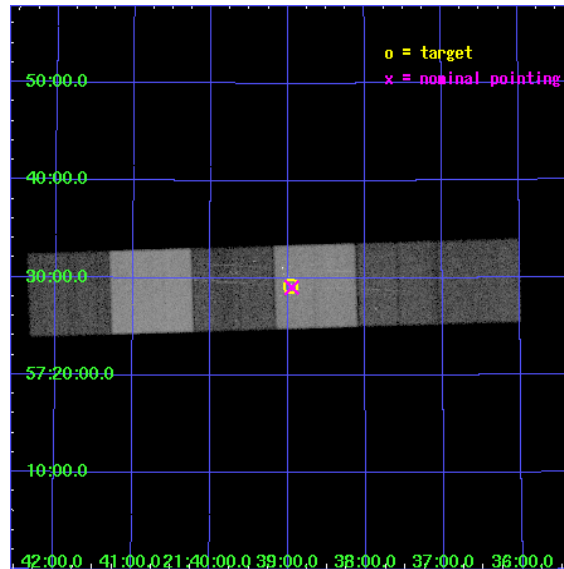
L2 Processing Date : Nov 17 2006

Contents

1	Front	2
2	OBI	3
2.1	OBI	3
2.1.1	Images	3
2.1.2	Bias	3
2.1.3	Parameters	4
2.1.4	Events	4
2.2	Compared Parameters	5
2.3	Aspect	6
2.4	Star Slots	9
2.4.1	Slot 3	9
2.4.2	Slot 4	10
2.4.3	Slot 5	11
2.4.4	Slot 6	12
2.4.5	Slot 7	13
2.5	FID Slots	14
2.5.1	Slot 0	14
2.5.2	Slot 1	15
2.5.3	Slot 2	16
3	Gratings	17
3.1	HEG Arm	17
3.2	MEG Arm	19
A	Summary	21
A.1	Status	21
A.2	Comments	21

1 Front

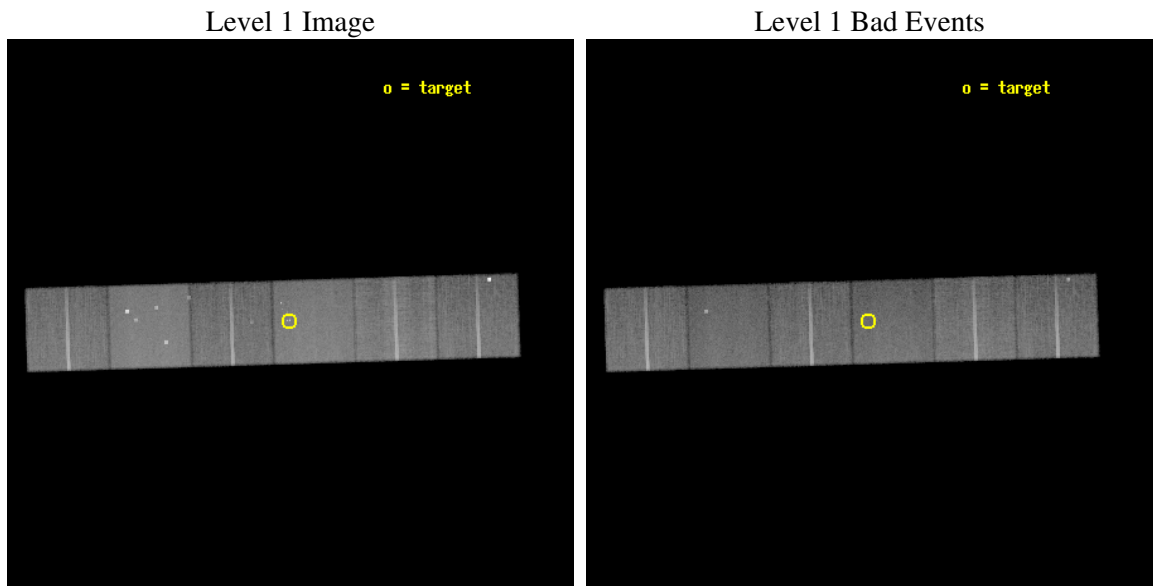
seq_num	200117
obs_id	1889
title	HIGH RESOLUTION SPECTROSCOPY AND VARIABILITY OF THE TRAPEZIUM-LIKE SYSTEM HD 206267 IN IC 1396
observer	Dr. Norbert Schulz
object	HD 206267
dtcycle	0
cycle	P
ra_targ	324.739583
dec_targ	57.486389
ra_nom	324.73695941919
dec_nom	57.4846955628
roll_nom	358.23777745726
revision	3
ontime	40003.200037256
livetime	39496.655431349
ontime4	40003.200037256
ontime5	40003.200037256
ontime6	40003.200037256
ontime7	40003.200037256
ontime8	40003.200037256
ontime9	39999.959057093
l2events	357996



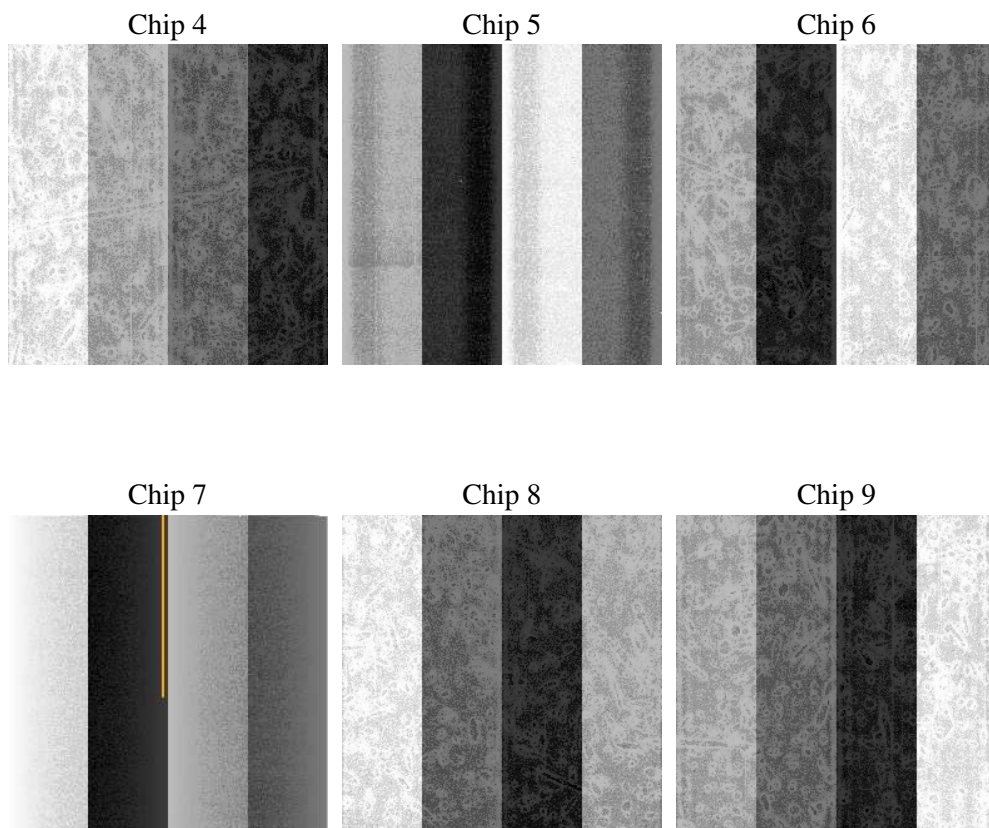
2 OBI

2.1 OBI

2.1.1 Images



2.1.2 Bias



2.1.3 Parameters

obi_num	0
ascdsver	7.6.9
caldsver	3.2.4
date	2006-11-15T19:46:17
revision	3

sched_exp_time	40280.000000
ontime	40010.112511083
ontime4	40010.112511083
ontime5	40010.112511083
ontime6	40010.112511083
ontime7	40010.112511083
ontime8	40010.112411395
ontime9	40006.87153092
l1events	1769184

2.1.4 Events

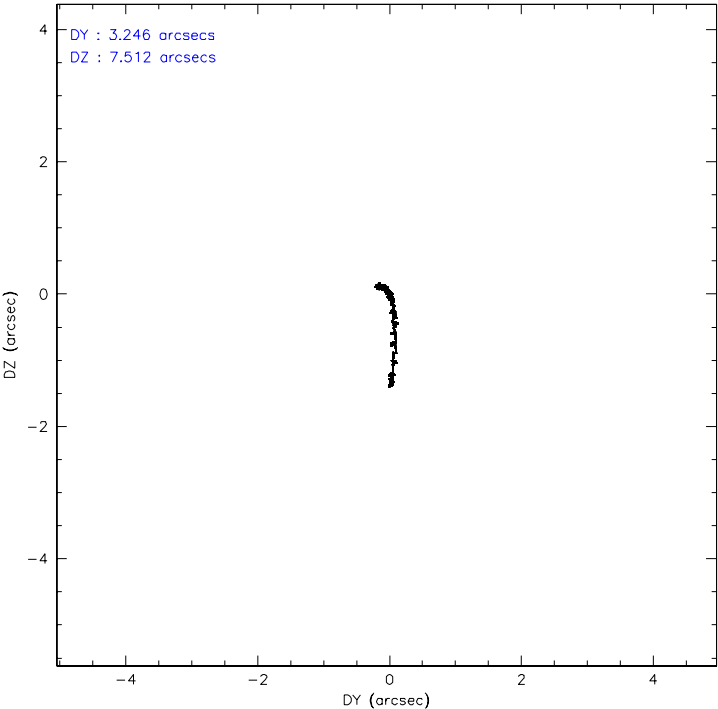
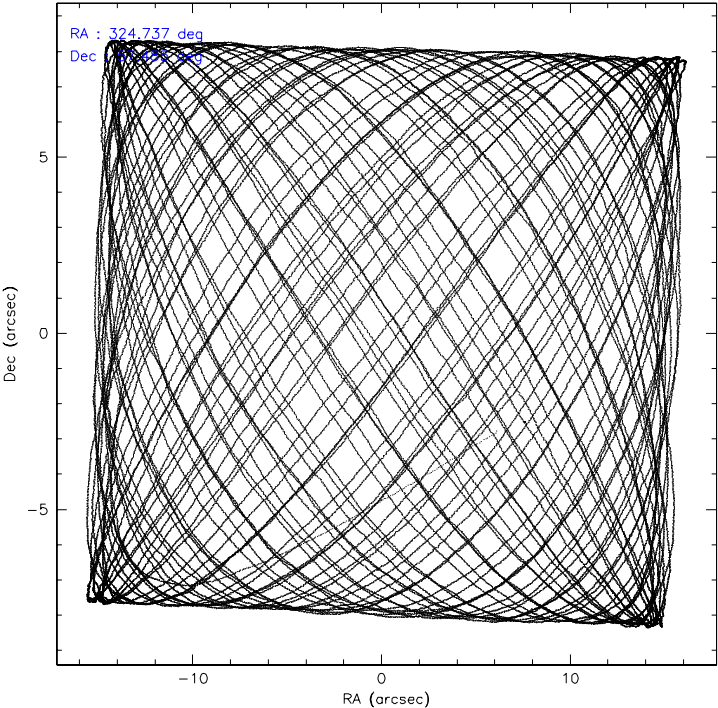
	ccd 4	ccd 5	ccd 6	ccd 7	ccd 8	ccd 9
level 1 events	277638	348130	251702	315268	315998	260448
rejected events	248780	192780	222240	194941	254265	220829
rejected %	89%	55%	88%	61%	80%	84%

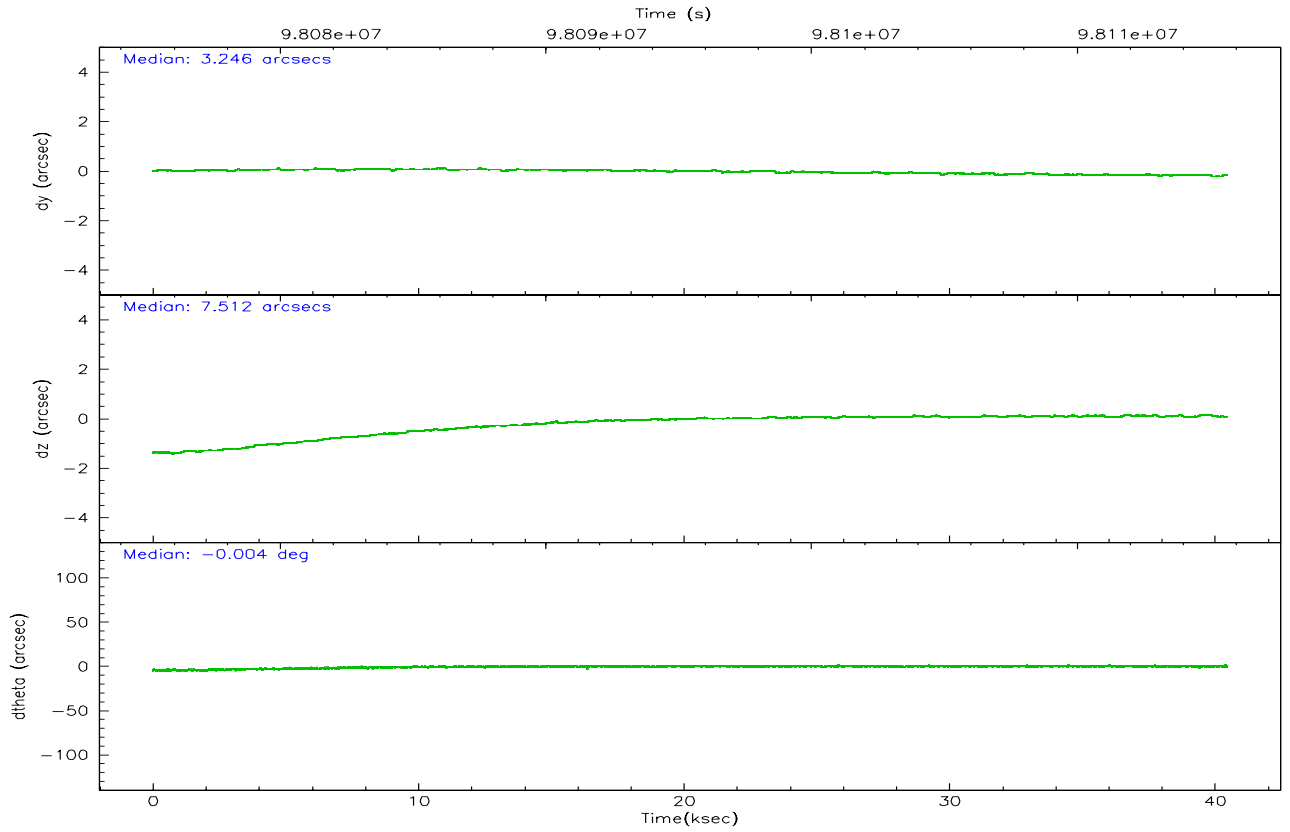
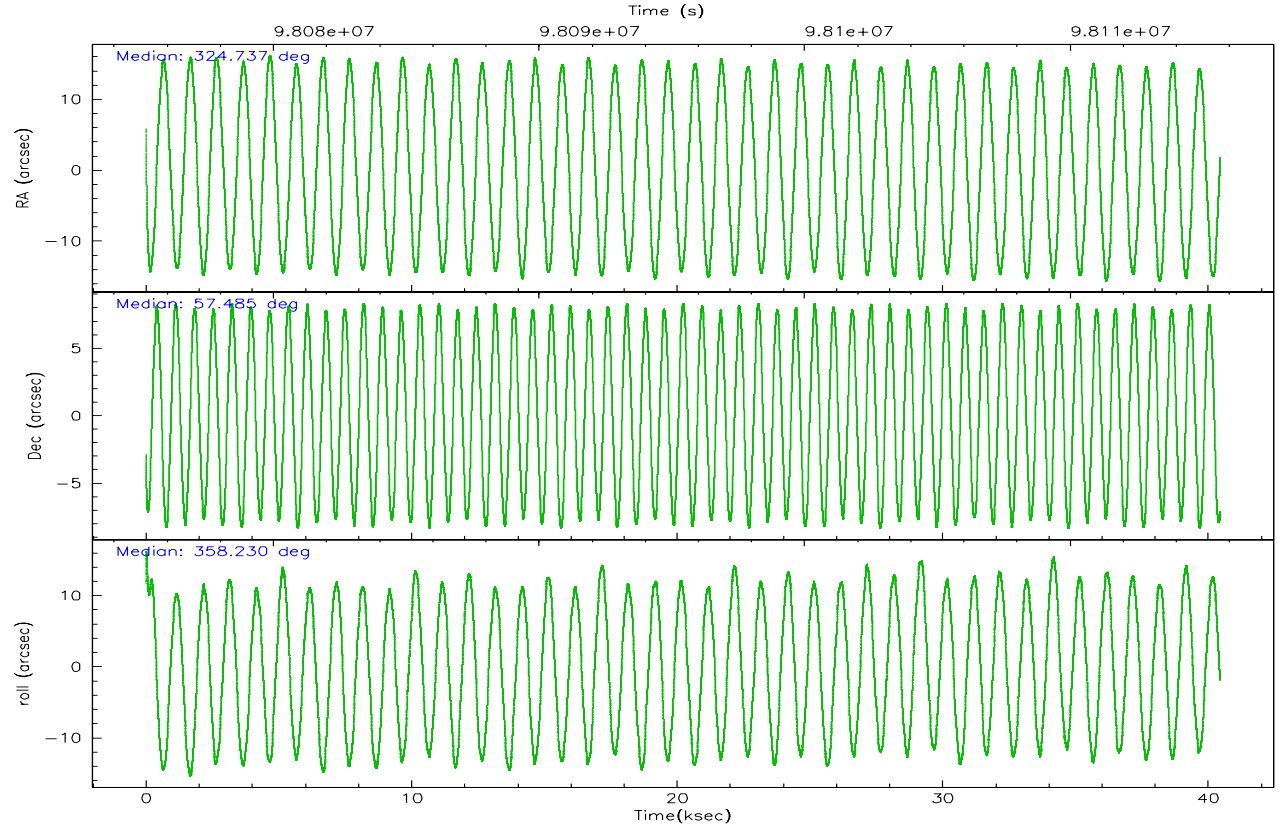
	ccd 4	ccd 5	ccd 6	ccd 7	ccd 8	ccd 9
grade 0 events	11593	18003	12566	7262	19944	22488
	4%	5%	4%	2%	6%	8%
grade 1 events	132	1844	144	199	172	1082
	0%	0%	0%	0%	0%	0%
grade 2 events	6831	45735	5747	29491	13173	5817
	2%	13%	2%	9%	4%	2%
grade 3 events	2711	3369	2879	6682	6451	2779
	0%	0%	1%	2%	2%	1%
grade 4 events	2642	3405	2820	6470	6191	2917
	0%	0%	1%	2%	1%	1%
grade 5 events	8632	16384	10275	21314	13253	10785
	3%	4%	4%	6%	4%	4%
grade 6 events	5083	84863	5457	70441	15985	5629
	1%	24%	2%	22%	5%	2%
grade 7 events	240014	174527	211814	173409	240829	208951
	86%	50%	84%	55%	76%	80%

2.2 Compared Parameters

Parameter	Planned	Actual	Parameter	Planned	Actual
Instrument	ACIS	ACIS	Obspar format version number	6	6
Detector	ACIS-456789	ACIS-456789	Obspar file type	PREDICTED	ACTUAL
Grating	HETG	HETG	Obspar update status	NONE	UPDATED
Data mode	FAINT	FAINT	Number of optional ACIS chips dropped	0	0
Observation mode	POINTING	POINTING	On-chip summing requested	N	N
Pointing RA	324.692456	324.7369594191896	Subarray requested	NONE	NONE
Pointing Dec	57.471543	57.48469556279998	Alternating exposures requested	N	N
Pointing Roll	358.118670	358.2377774572577	Primary exposure time	0.000000	3.2
SIM focus pos (mm)	-0.684267	-0.6828225247311905			
SIM defocus (mm)	0	0.001444936568705701			
SIM translation stage pos (mm)	-190.132523	-190.1400660498719			
SIM translation stage offset (mm)	0	0.00754346686406393			
Phase constraints	Y	Y			
Phase period	3.709800	3.709800			
Phase epoch	51094.120000	51094.120000			
Phase start	0.450000	0.450000			
Phase end	0.550000	0.550000			
Phase start error	0.050000	0.050000			
Phase end error	0.050000	0.050000			
Observation start time	98075367.184000	98074551.043688			
Observation start date	2001-02-09T03:08:23	2001-02-09T02:55:51			
Observation end time	98115647.184000	98116135.29528999			
Observation end date	2001-02-09T14:19:43	2001-02-09T14:28:55			
Read mode	TIMED	TIMED			

2.3 Aspect



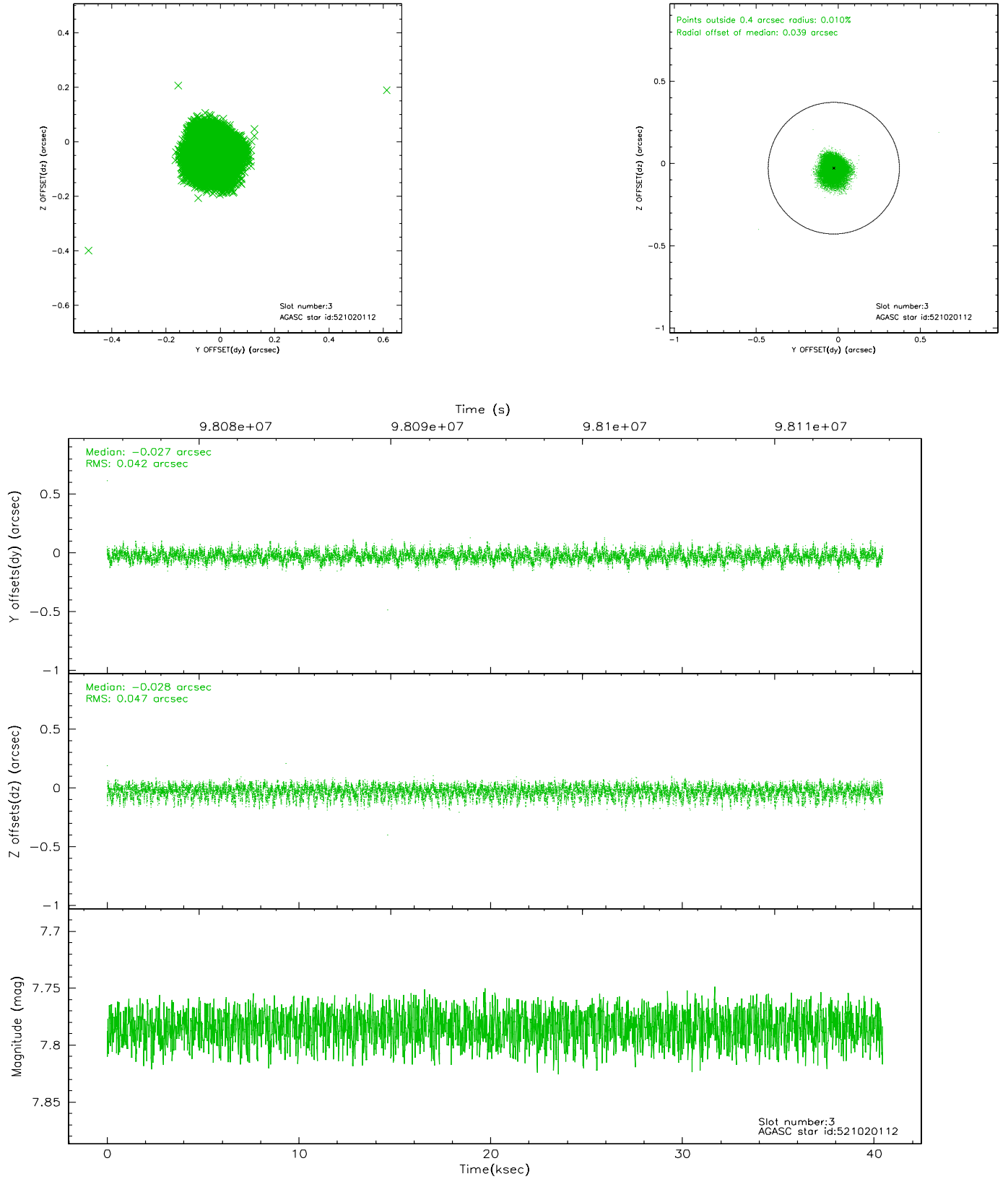


Slot Statistics

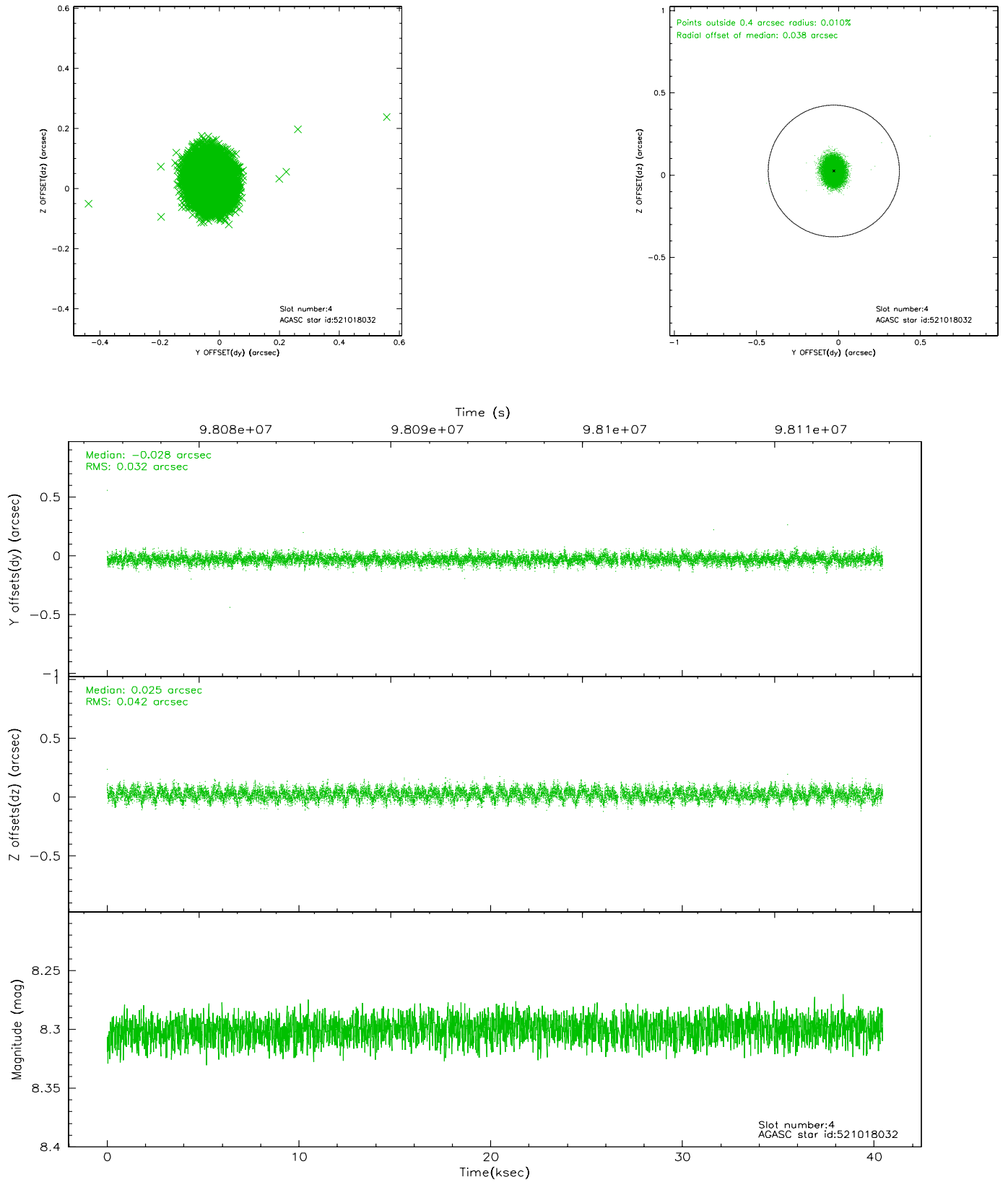
slot	status	id	mag	n_pts	med_dy	med_dz	dr1	dr2	ra	dec	mean_y	mean_z
0	FID	ACIS-S-1	7.19	9864	0.011	-0.020	0.014	0.023	0.000000	0.000000	940.13	-1724.11
1	FID	ACIS-S-5	7.24	9866	0.022	0.029	0.012	0.028	0.000000	0.000000	-1808.80	173.55
2	FID	ACIS-S-6	7.35	9865	-0.055	0.002	0.019	0.044	0.000000	0.000000	405.67	817.45
3	GUIDE	521020112	7.78	19730	-0.027	-0.028	0.067	0.109	324.609515	56.973735	-103.52	-1797.07
4	GUIDE	521018032	8.30	19655	-0.028	0.025	0.056	0.090	324.637664	57.165729	-70.54	-1104.50
5	GUIDE	521023608	8.78	19723	-0.023	-0.011	0.060	0.100	325.041395	57.195436	712.96	-969.97
6	GUIDE	521016064	8.96	19722	0.024	0.091	0.076	0.122	325.938547	57.912907	2328.62	1687.97
7	GUIDE	521545688	8.62	19722	0.054	-0.068	0.097	0.158	324.248507	58.140166	-922.43	2380.08

2.4 Star Slots

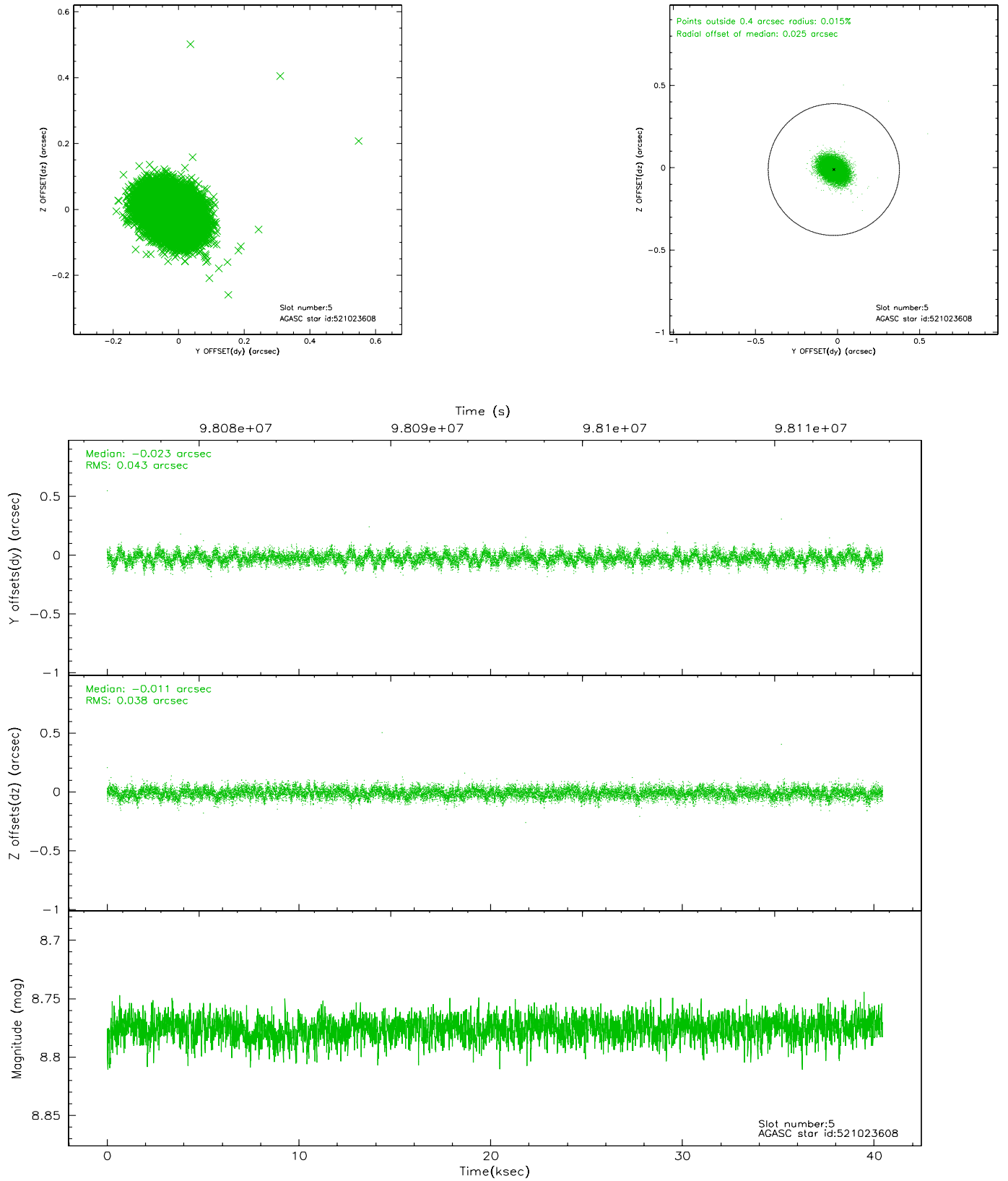
2.4.1 Slot 3



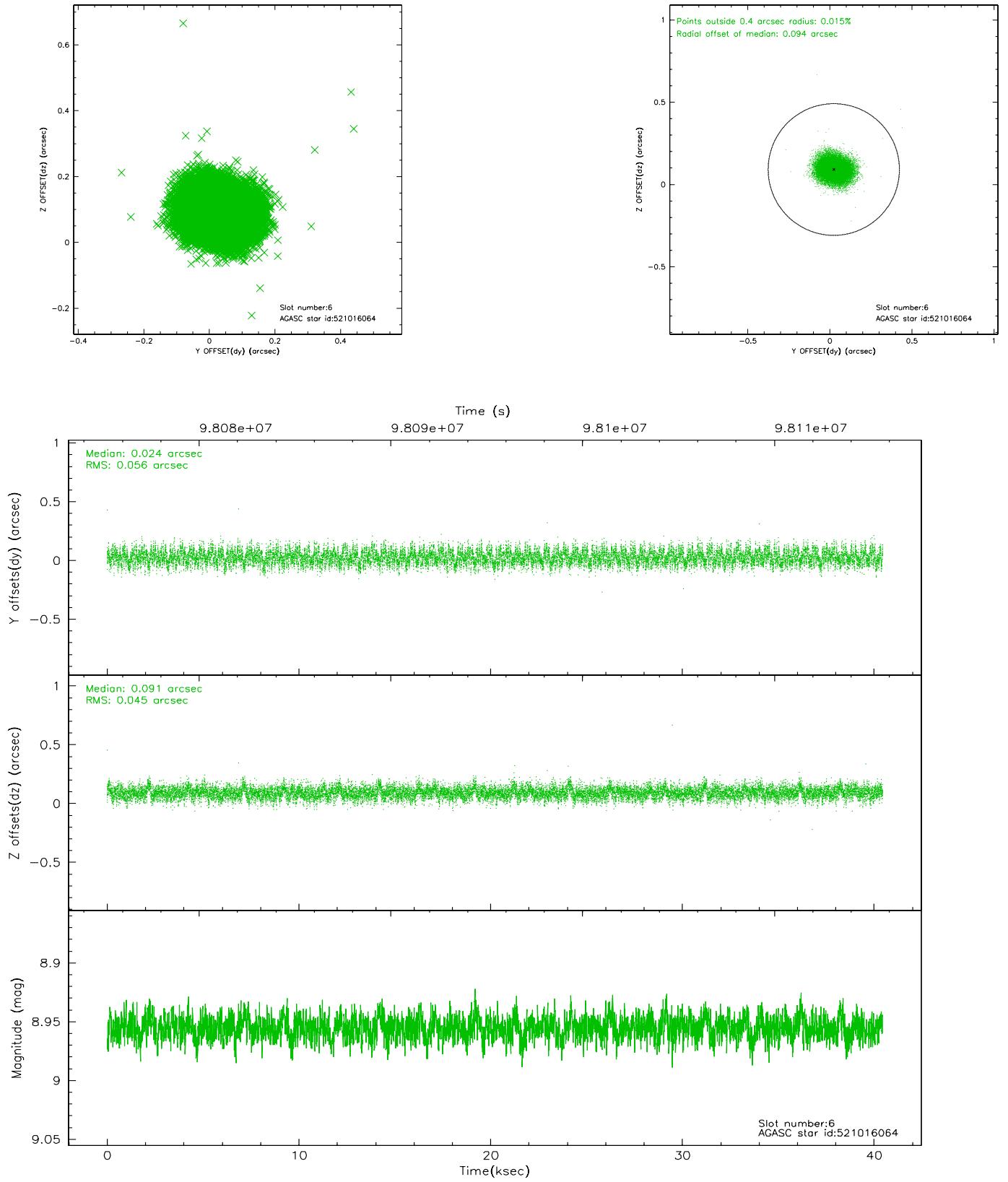
2.4.2 Slot 4



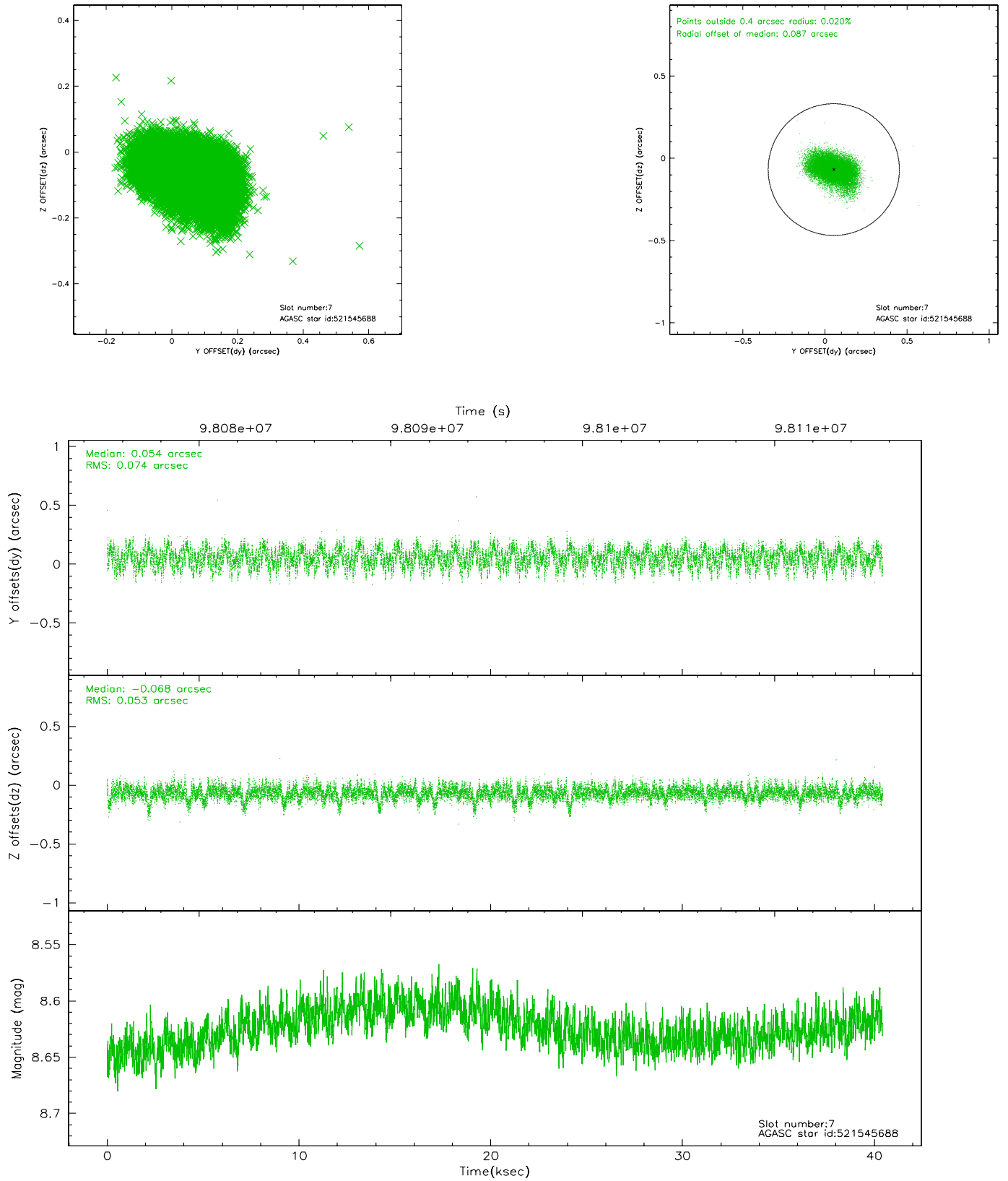
2.4.3 Slot 5



2.4.4 Slot 6

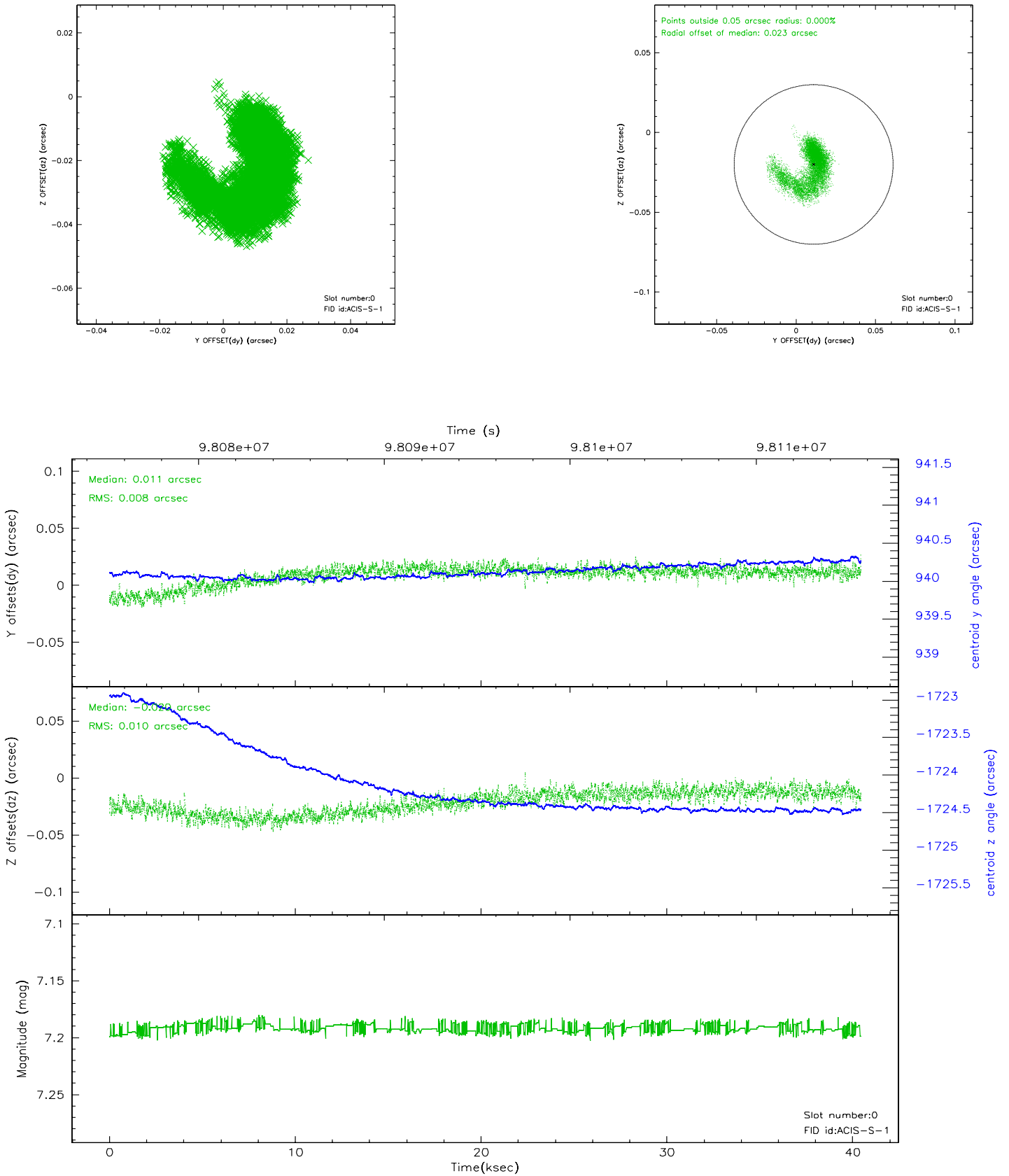


2.4.5 Slot 7

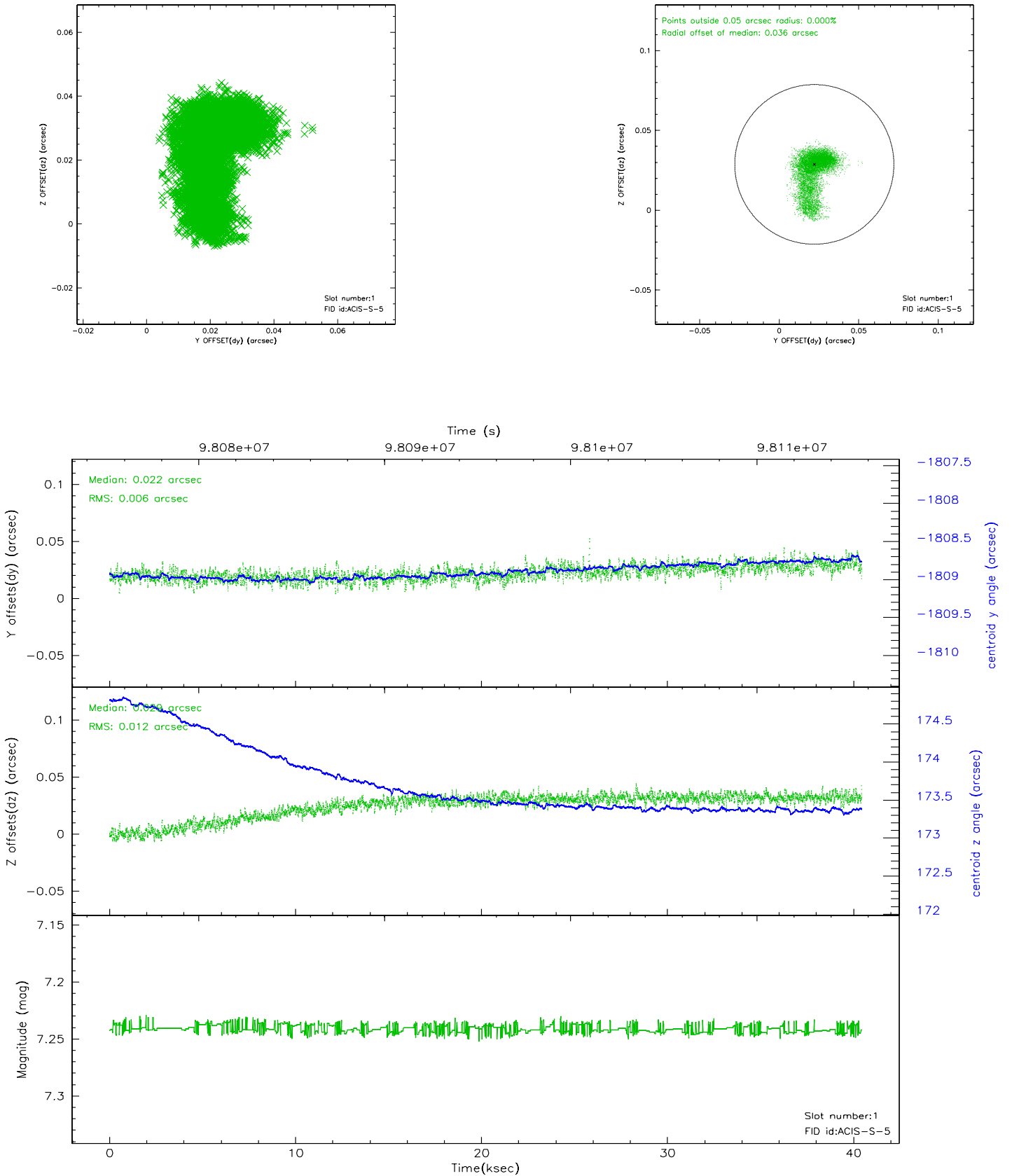


2.5 FID Slots

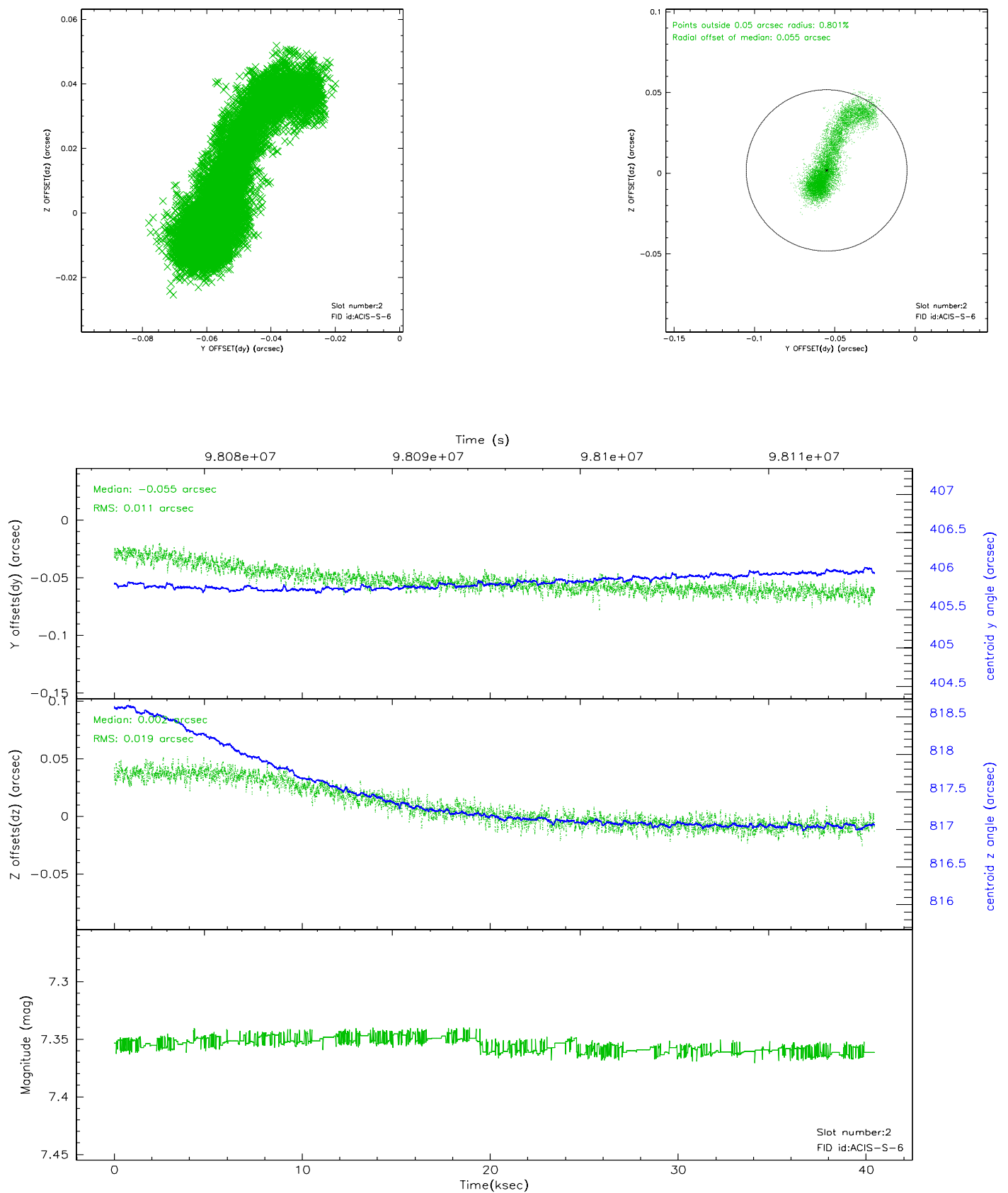
2.5.1 Slot 0



2.5.2 Slot 1



2.5.3 Slot 2

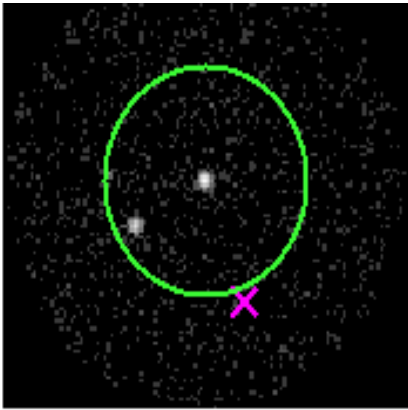


3 Gratings

3.1 HEG Arm



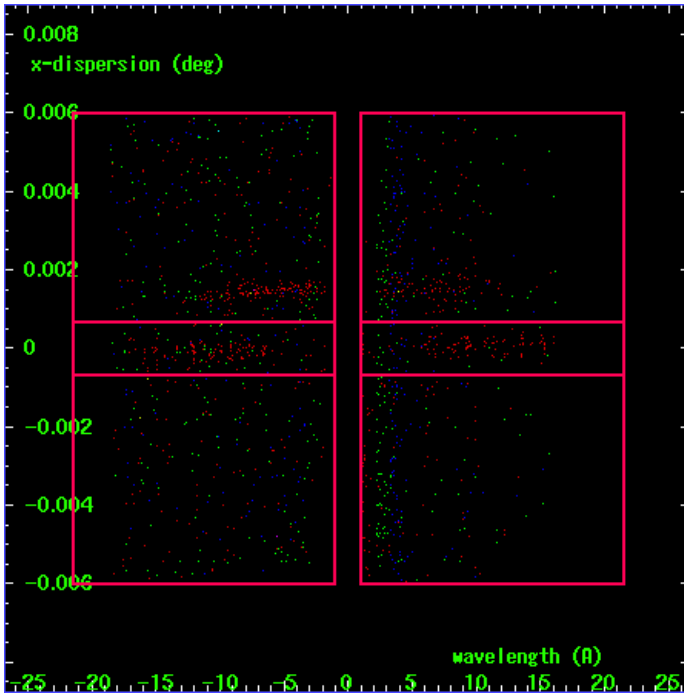
HEG Order Sort 123



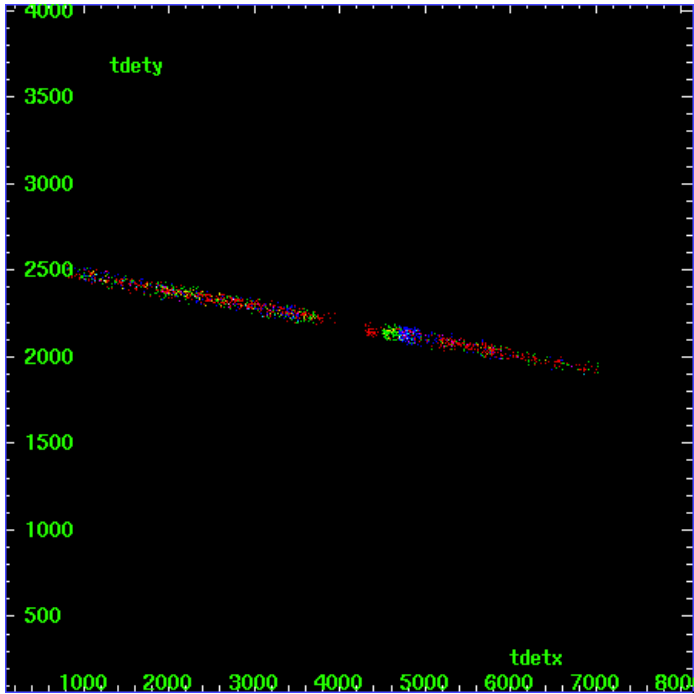
HEG Zero Order



HEG Order Sort ALL

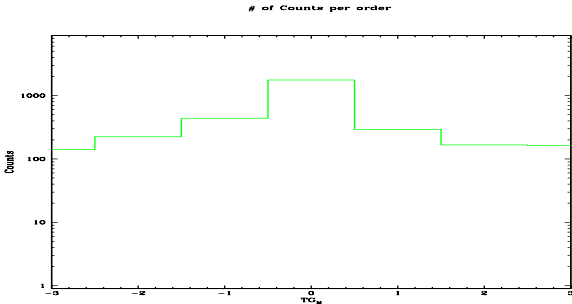


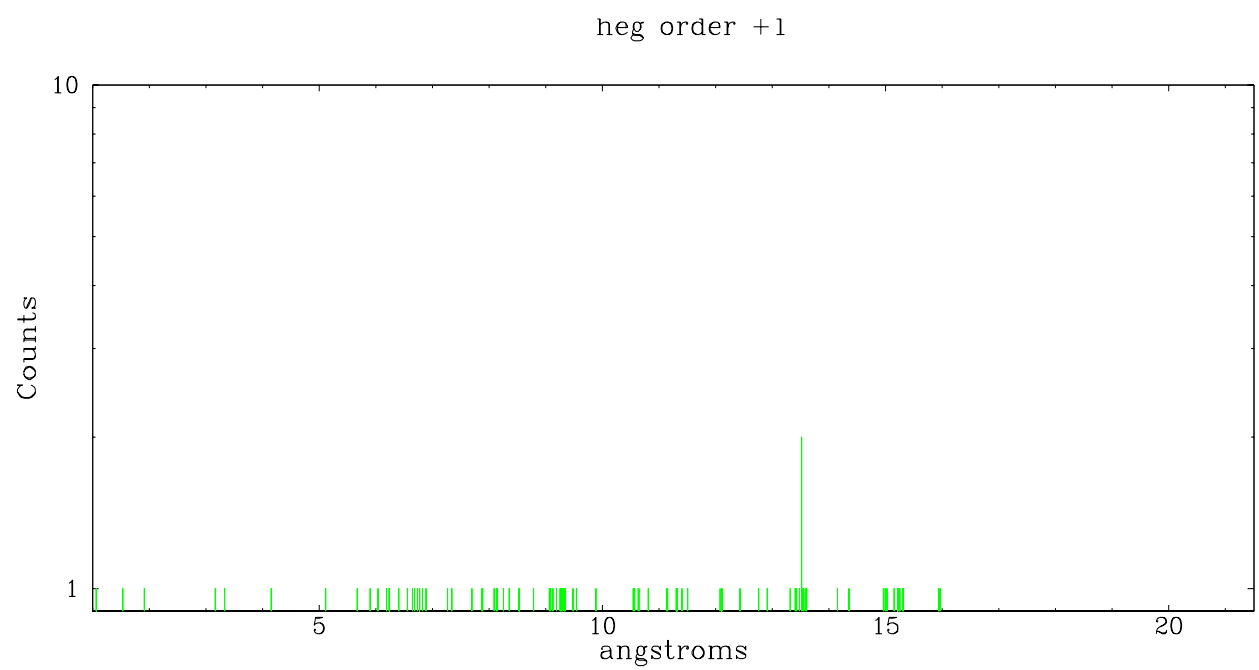
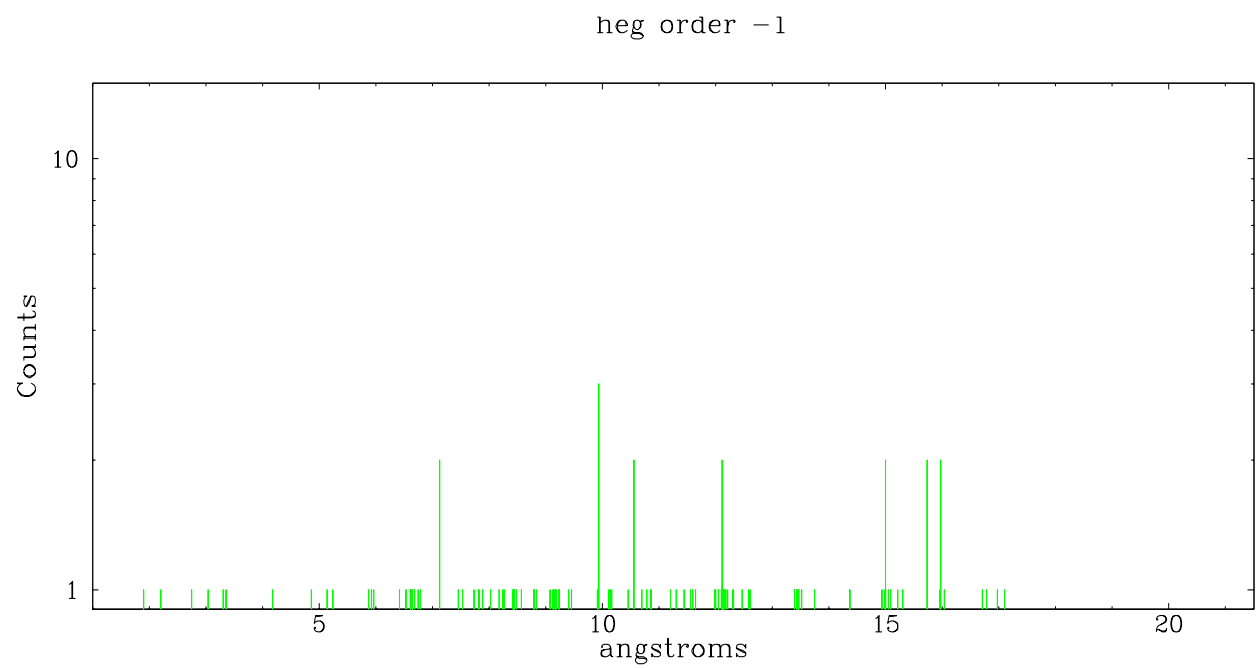
Spot Image HEG



Full Detector HEG

	order -3	order -2	order -1	order 0	order 1	order 2	order 3
Events	140	224	438	1765	292	166	162

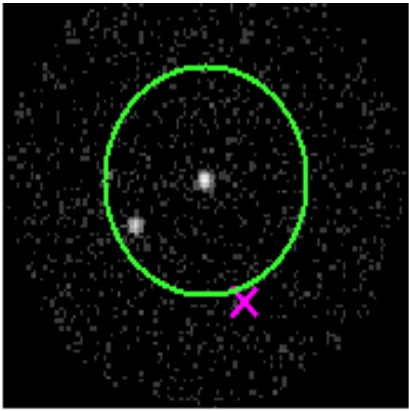




3.2 MEG Arm



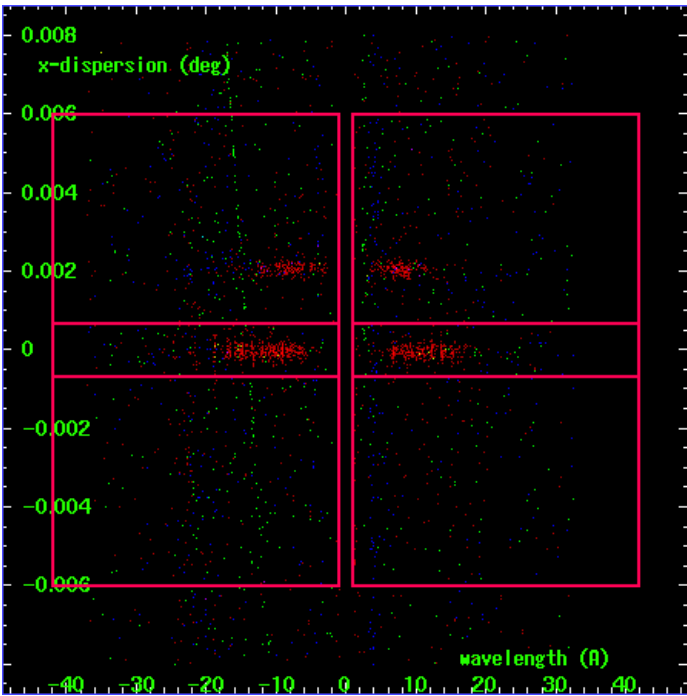
MEG Order Sort 123



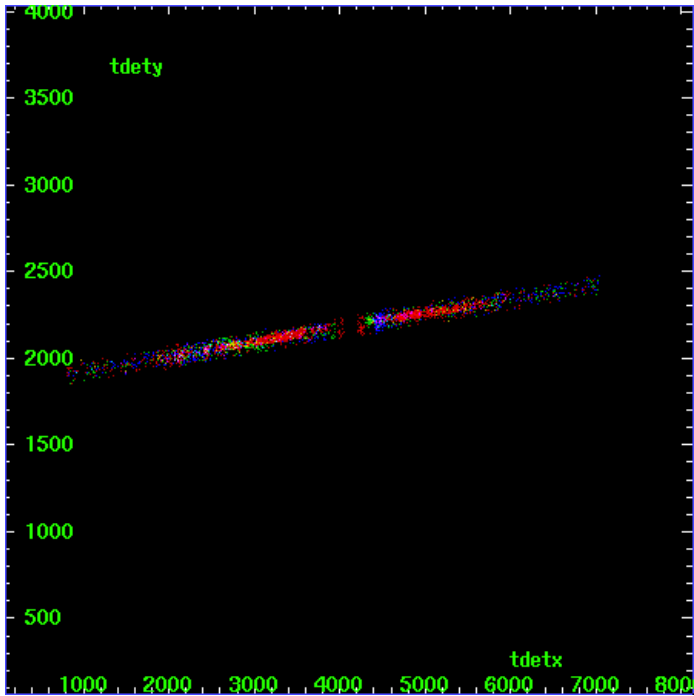
MEG Zero Order



MEG Order Sort ALL

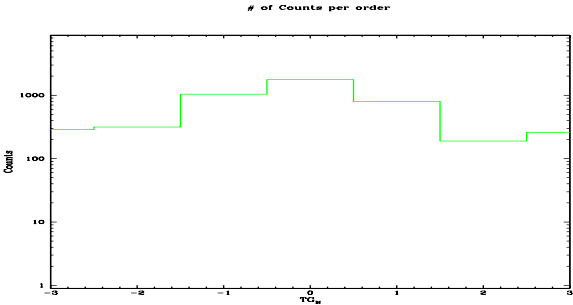


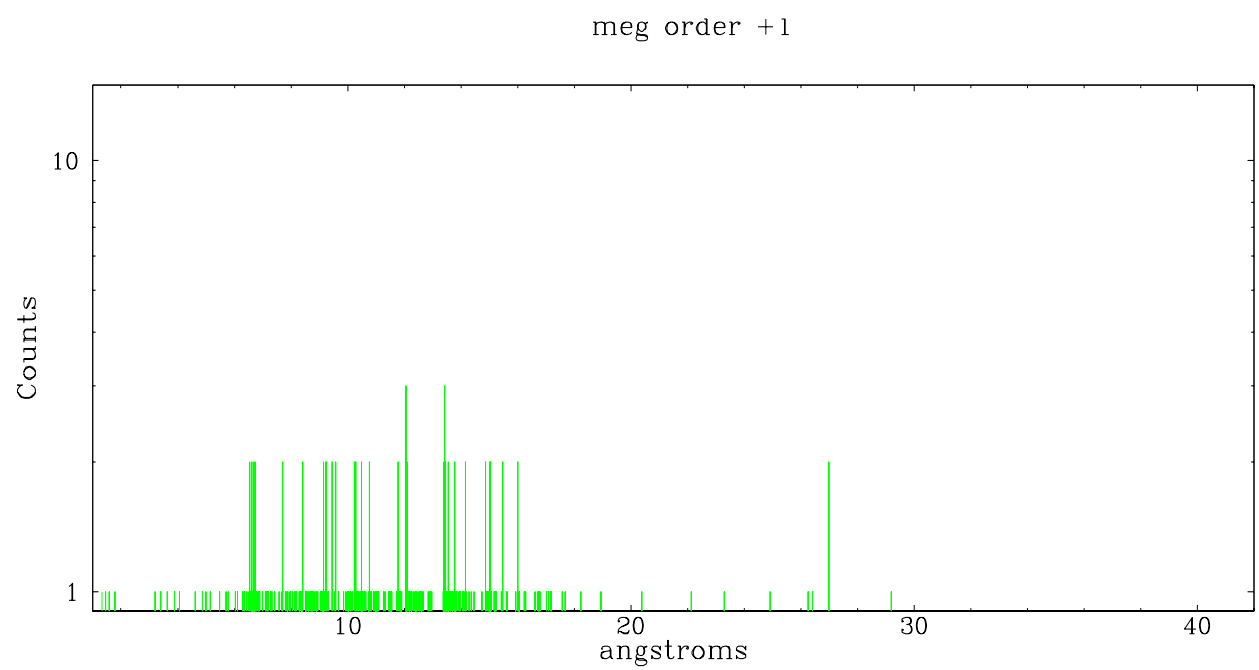
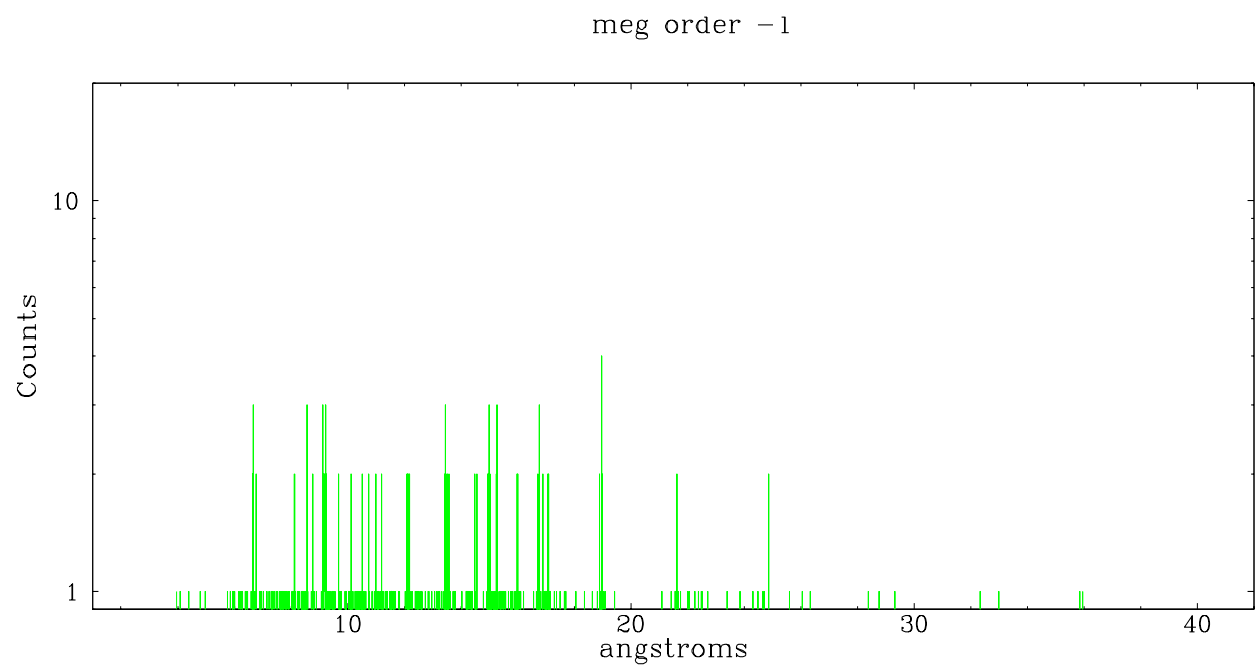
Spot Image MEG



Full Detector MEG

	order -3	order -2	order -1	order 0	order 1	order 2	order 3
Events	289	315	1036	1765	795	189	259





A Summary

A.1 Status

V&V Scientist	David Huenemoerder
V&V Date (YYYY-MM-DD)	2006.11.20
V&V Edition	1
V&V Disposition and Status	OK
V&V Charge Time	39.907

A.2 Comments

Charge time for this ObsId remains at original value of 39.907 ks, although with the current processing the charge time would have been 40.006 ksec. There are several X-ray sources in this field that have dispersed spectra. The primary target is ~6-7' ESE from BD+56 2617C. The MEG spectra of these two objects appear to be separable. The HEG arms will probably overlap, but the energy resolution of HEG may be sufficient to separate the sources.

phase constraint met.