

V&V Reference Report

L2 ASCDS Version : 10.3.1

Observation 17039 - L2 Version 1
Chandra X-Ray Center

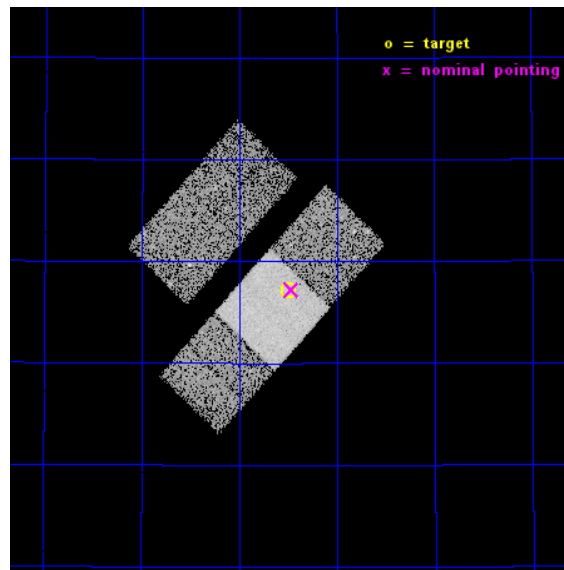
L2 Processing Date : Jan 5 2015

Contents

1	Front	2
2	OBI	3
2.1	OBI	3
2.1.1	Images	3
2.1.2	Bias	3
2.1.3	Parameters	4
2.1.4	Events	4
2.2	Compared Parameters	5
2.3	Aspect	6
2.4	Star Slots	9
2.4.1	Slot 3	9
2.4.2	Slot 4	10
2.4.3	Slot 5	11
2.4.4	Slot 6	12
2.4.5	Slot 7	13
2.5	FID Slots	14
2.5.1	Slot 0	14
2.5.2	Slot 1	15
2.5.3	Slot 2	16
A	Summary	17
A.1	Status	17
A.2	Comments	17

1 Front

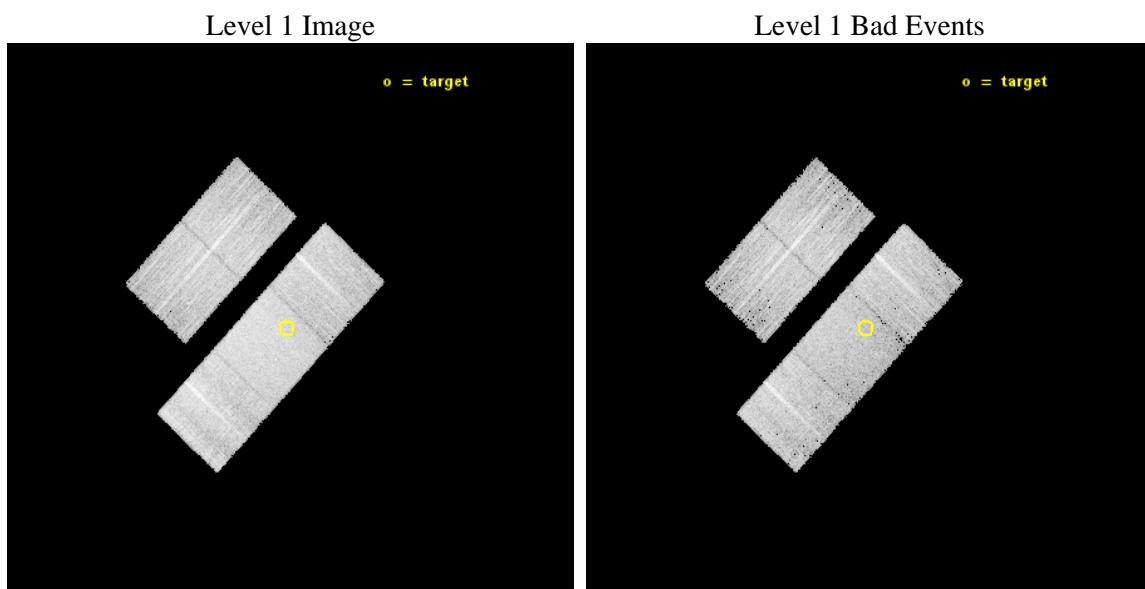
seq_num	703043	Sequence number
obs_id	17039	Observation id
title	Probing the Growth of Massive Black Holes in Dwarf Galaxies with Chandra and HST	Proposal title
observer	Dr. Amy Reines	Principal investigator
object	J084029.91+470710.4	Source name
dtcycle	0	
cycle	P	events from which exps? Prim/Second/Both
ra_targ	130.124583	Observer's specified target RA [deg]
dec_targ	47.119556	Observer's specified target Dec [deg]
ra_nom	130.11665866904	Nominal RA [deg]
dec_nom	47.120303911702	Nominal Dec [deg]
roll_nom	132.97489936251	Nominal Roll [deg]
revision	1	Processing version of data
ontime	13063.40010047	Sum of GTIs [s]
livetime	12892.717161022	Livetime [s]
ontime2	13060.259010136	Sum of GTIs [s]
ontime3	13063.40010047	Sum of GTIs [s]
ontime6	13063.40010047	Sum of GTIs [s]
ontime7	13063.40010047	Sum of GTIs [s]
ontime8	13063.40010047	Sum of GTIs [s]
l2events	61662	Number of level 2 events



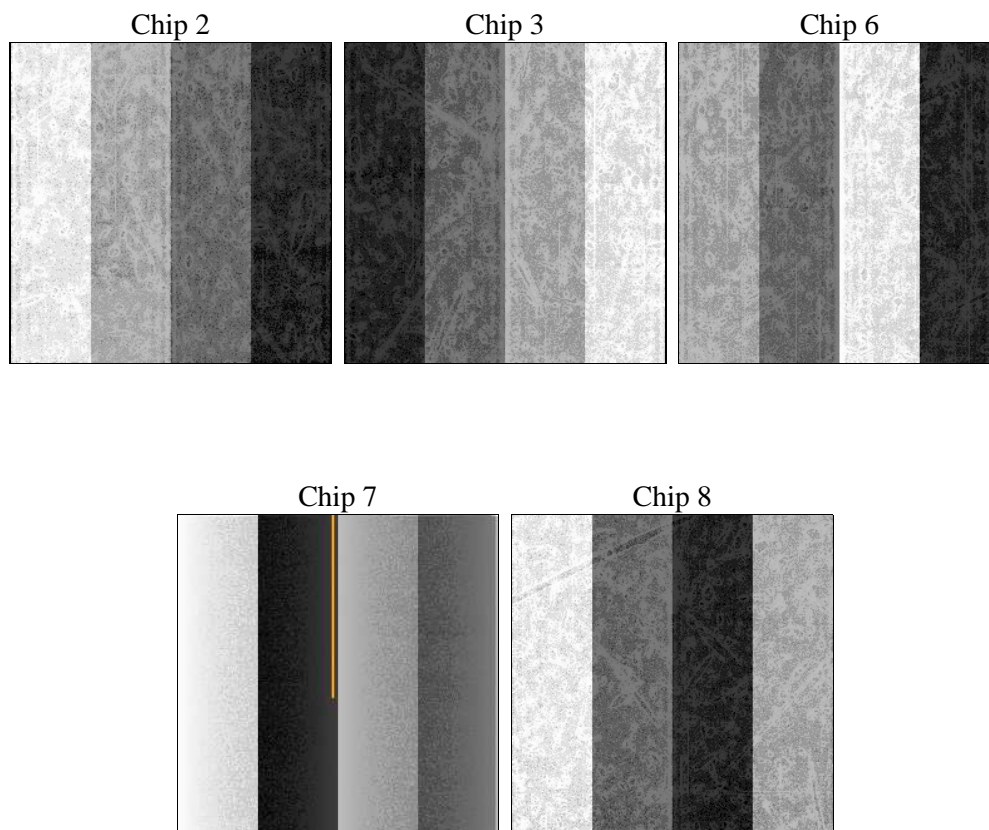
2 OBI

2.1 OBI

2.1.1 Images



2.1.2 Bias



2.1.3 Parameters

obi_num	0	Obi number	sched_exp_time	13000.000000	[s] Scheduled observation exposure time
ascdsver	10.3.1	Processing system revision	ontime	13063.40010047	Sum of GTIs [s]
caldsver	4.6.5	 	ontime2	13060.259010136	Sum of GTIs [s]
date	2015-01-06T04:33:11	Date and time of file creation	ontime3	13063.40010047	Sum of GTIs [s]
revision	1	Processing version of data	ontime6	13063.40010047	Sum of GTIs [s]
			ontime7	13063.40010047	Sum of GTIs [s]
			ontime8	13063.40010047	Sum of GTIs [s]
			l1events	358384	Number of level 1 events

2.1.4 Events

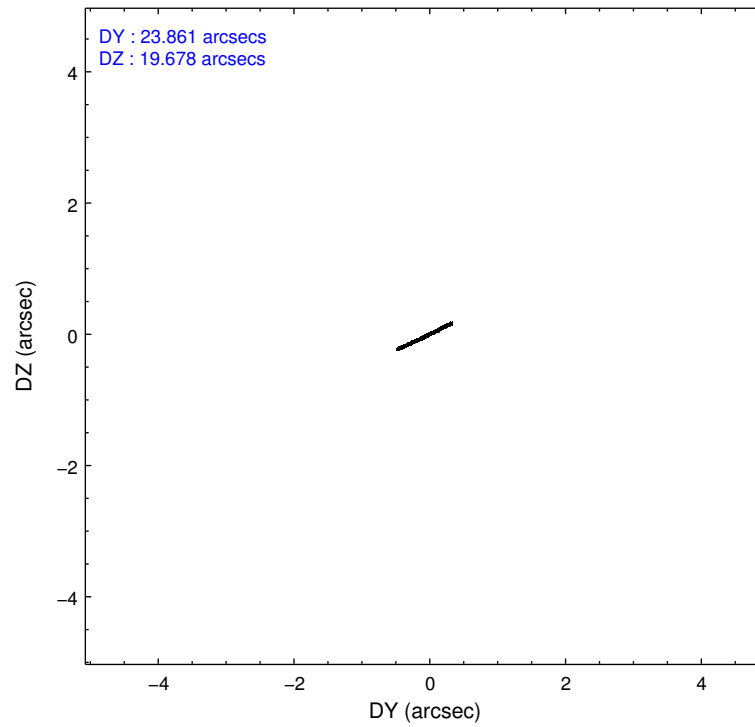
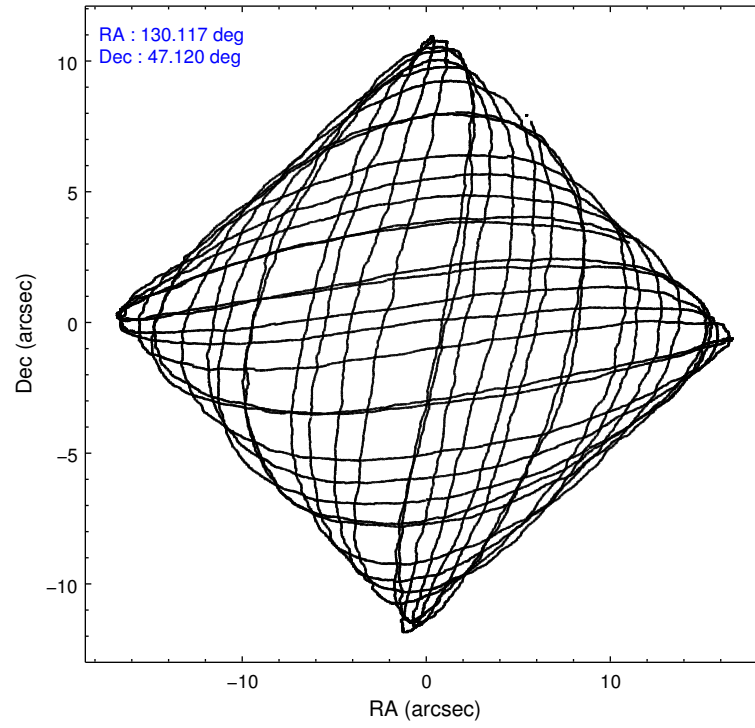
	ccd 2	ccd 3	ccd 6	ccd 7	ccd 8
level 1 events	63128	62027	65997	85947	81285
rejected events	56342	54911	58071	49488	61197
rejected %	89%	88%	87%	57%	75%

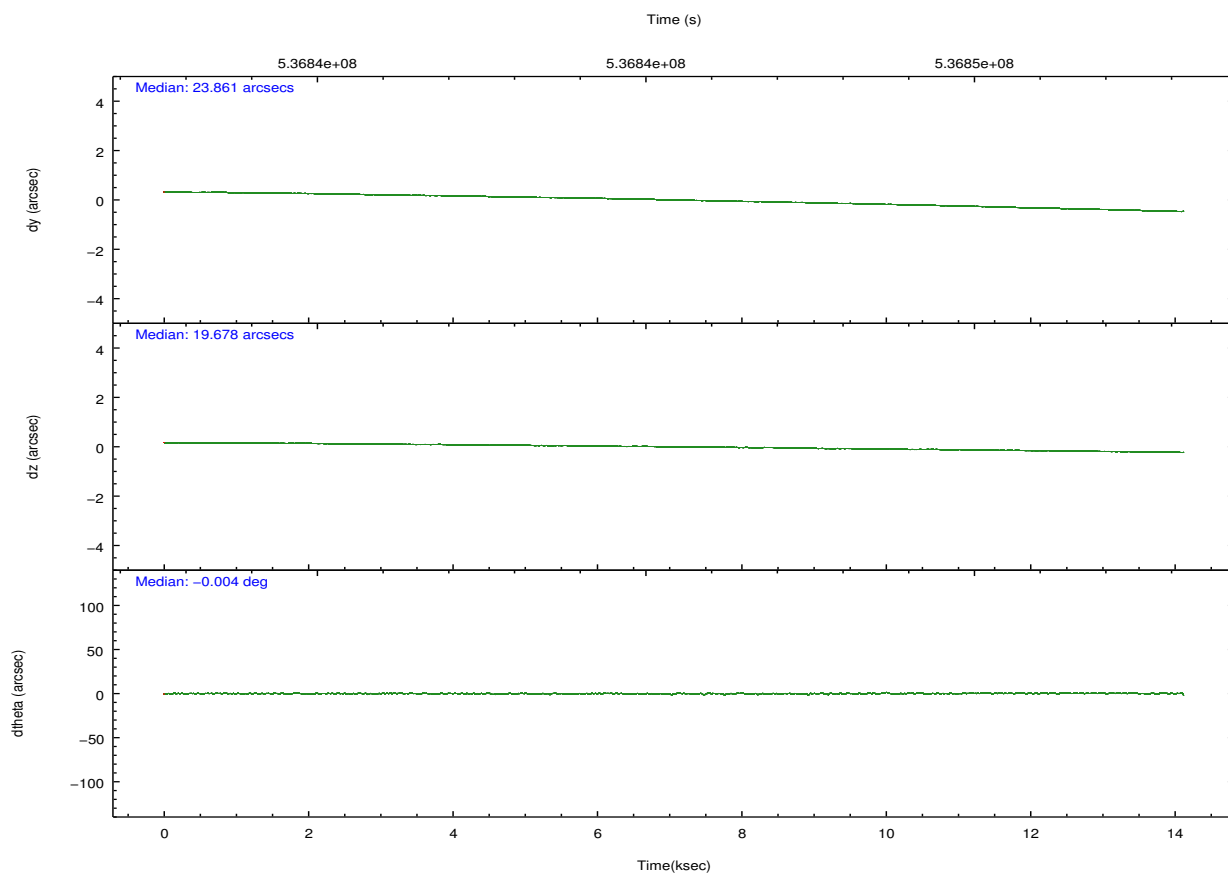
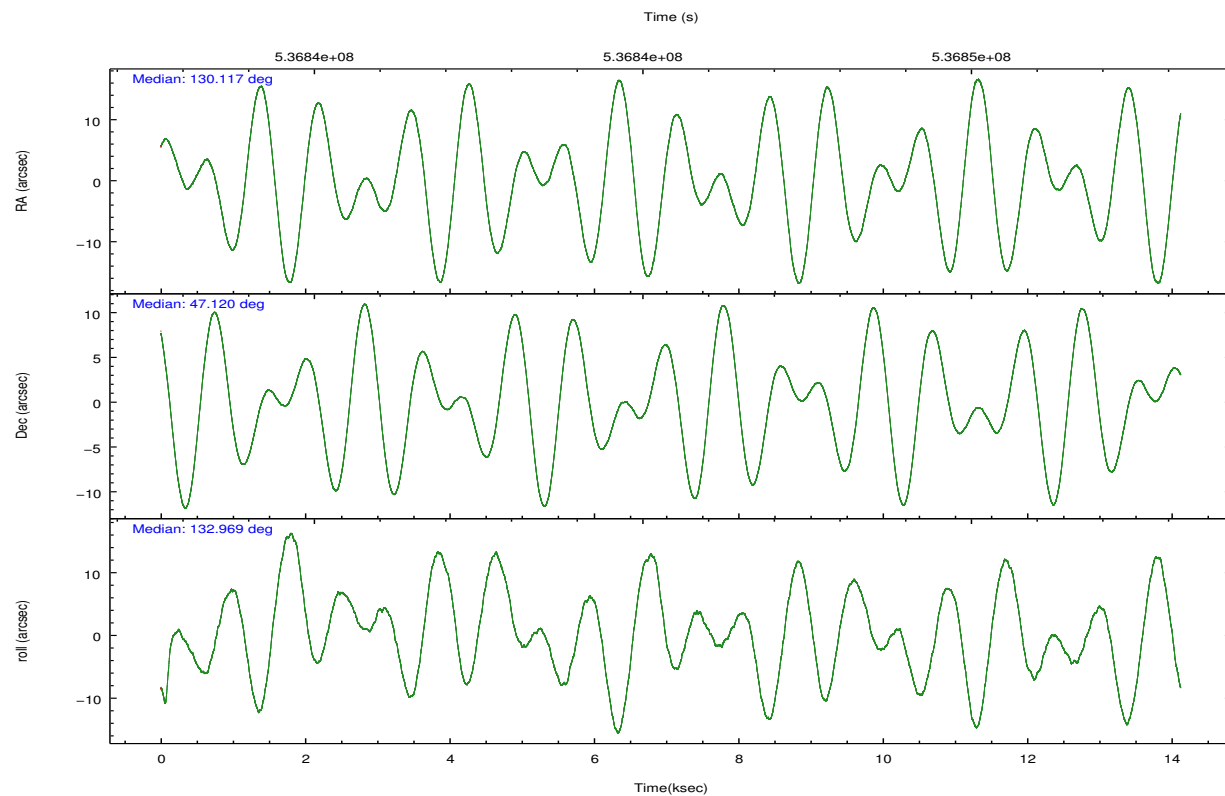
	ccd 2	ccd 3	ccd 6	ccd 7	ccd 8
grade 0 events	2406	2607	2630	2989	5558
	3%	4%	3%	3%	6%
grade 1 events	36	34	43	101	55
	0%	0%	0%	0%	0%
grade 2 events	1545	1513	1792	7549	4890
	2%	2%	2%	8%	6%
grade 3 events	734	724	787	2753	2126
	1%	1%	1%	3%	2%
grade 4 events	690	739	796	2798	2001
	1%	1%	1%	3%	2%
grade 5 events	2689	3232	3204	8330	4688
	4%	5%	4%	9%	5%
grade 6 events	1417	1536	1924	20395	5535
	2%	2%	2%	23%	6%
grade 7 events	53611	51642	54821	41032	56432
	84%	83%	83%	47%	69%

2.2 Compared Parameters

Parameter	Planned	Actual	Parameter	Planned	Actual
Instrument	ACIS	ACIS	Obspar format version number	7	7
Detector	ACIS-23678	ACIS-23678	Obspar file type	PREDICTED	ACTUAL
Grating	NONE	NONE	Obspar update status	NONE	UPDATED
Data mode	FAINT	FAINT	CCD I0 on	N	N
Observation mode	POINTING	POINTING	CCD I1 on	N	N
[deg] Pointing RA	130.155388	130.116658669041	CCD I2 on	Y	Y
[deg] Pointing Dec	47.112620	47.12030391170167	CCD I3 on	Y	Y
[deg] Pointing Roll	132.789895	132.9748993625128	CCD S0 on	N	N
[mm] SIM focus pos	-0.684267	-0.6828225247311905	CCD S1 on	N	N
[mm] SIM defocus	0	0.001444936568705701	CCD S2 on	Y	Y
[mm] SIM translation stage pos	-190.132523	-190.1425803651734	CCD S3 on	Y	Y
[mm] SIM translation stage offset	0	0.01005778216563158	CCD S4 on	O1	Y
[s] Observation start time (MET)	536839487.184000	536838075.73567	CCD S5 on	N	N
Observation start date	2015-01-05T10:03:40	2015-01-05T09:41:15	Number of optional ACIS chips dropped	0	0
[s] Observation end time (MET)	536852487.184000	536852774.74899	On-chip summing requested	N	N
Observation end date	2015-01-05T13:40:20	2015-01-05T13:46:14	Subarray requested	NONE	NONE
Read mode	TIMED	TIMED	Alternating exposures requested	N	N
			[s] Primary exposure time	0.000000	3.1

2.3 Aspect



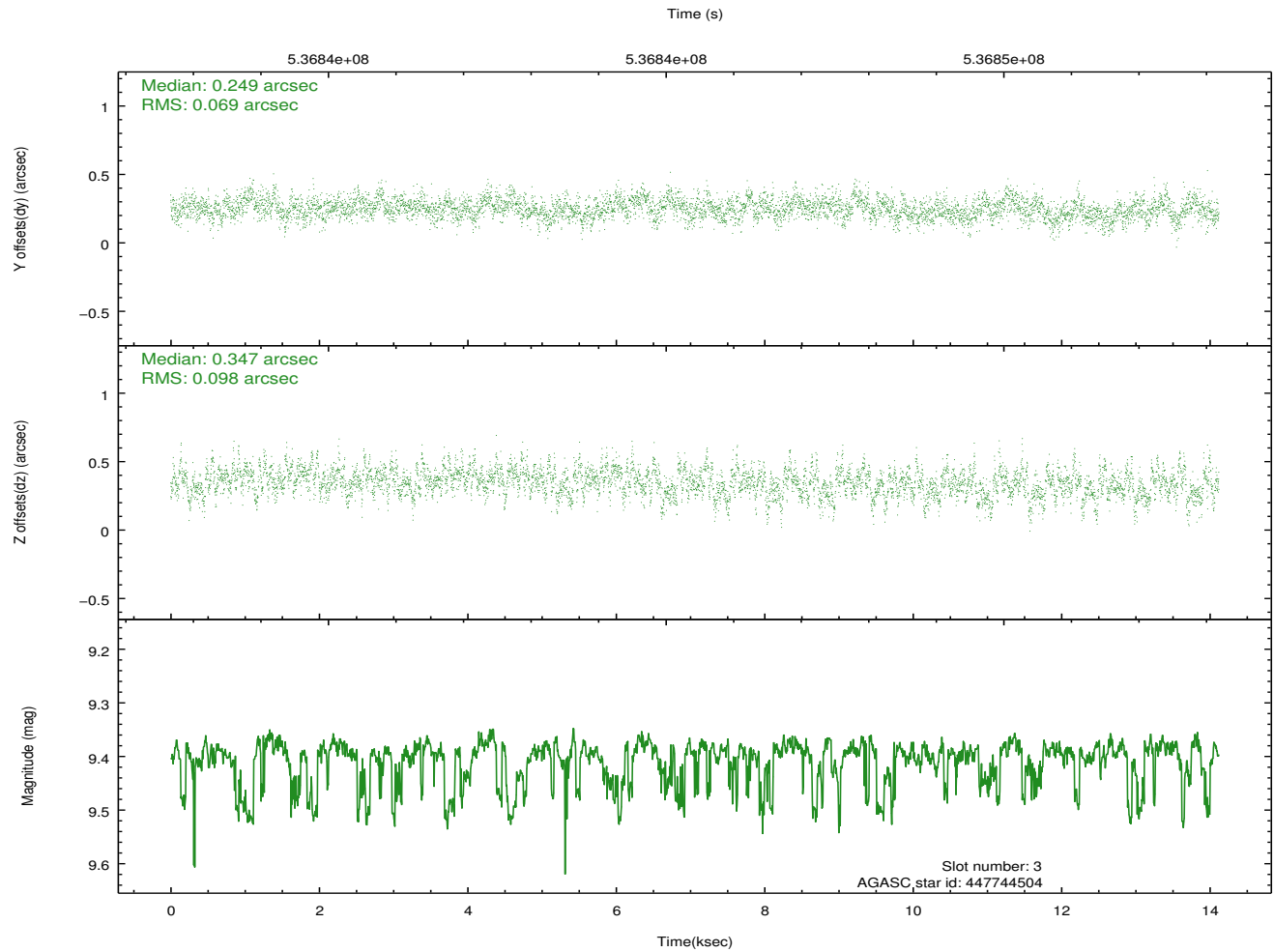
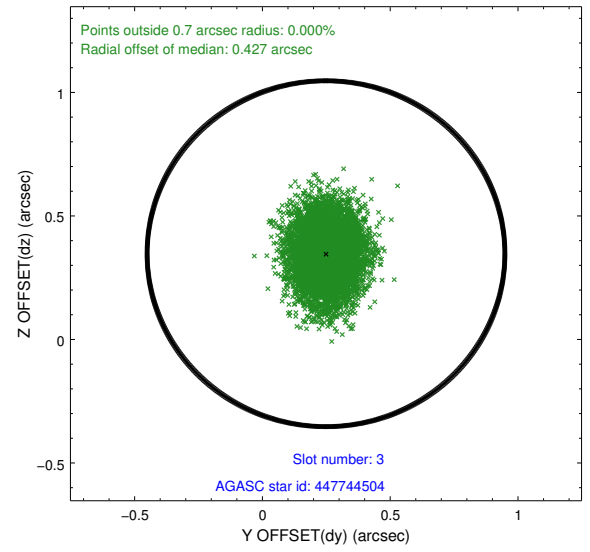
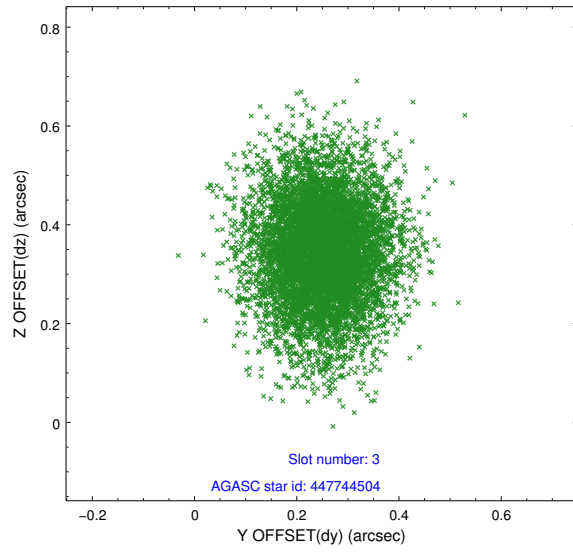


Slot Statistics

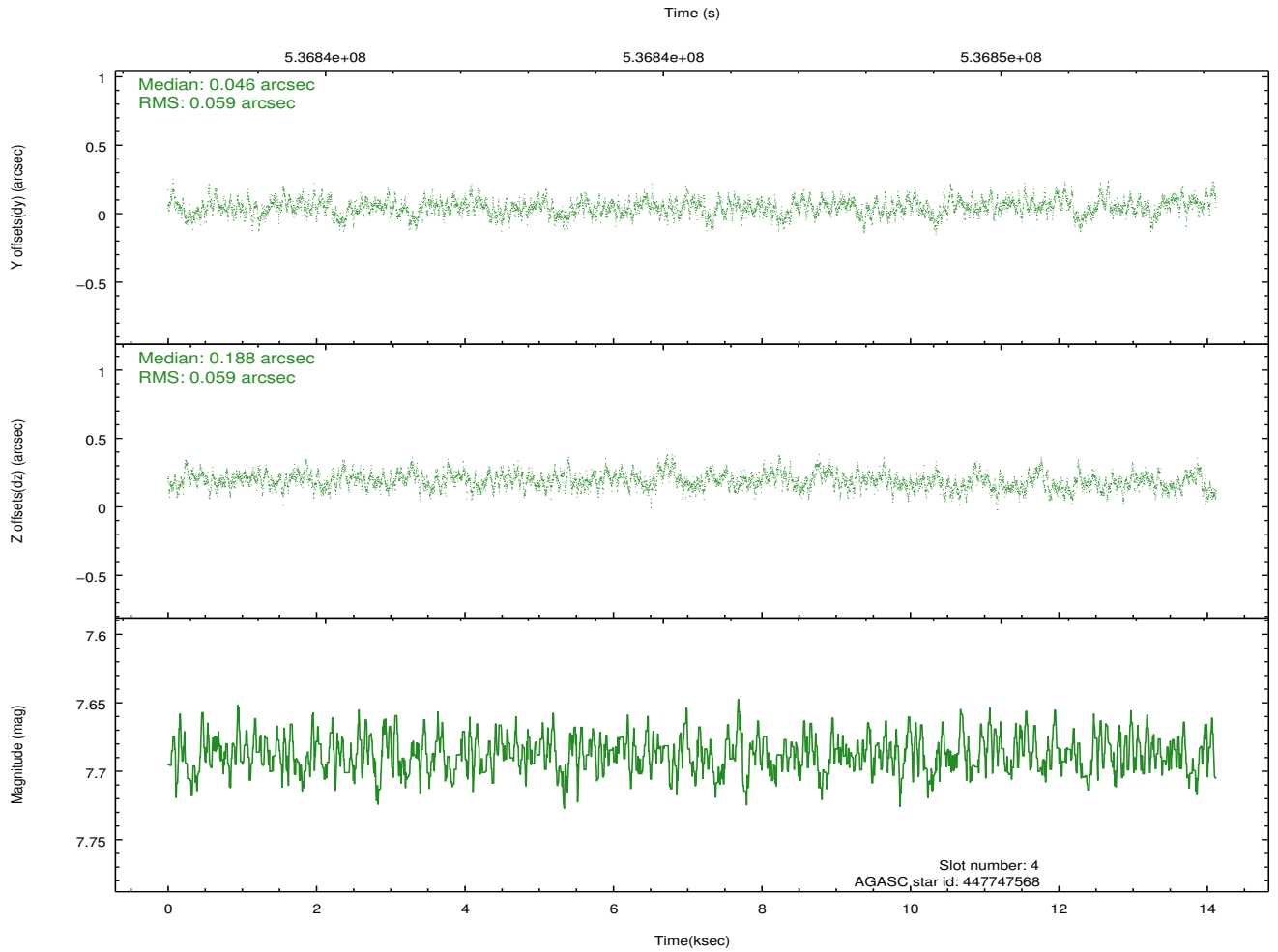
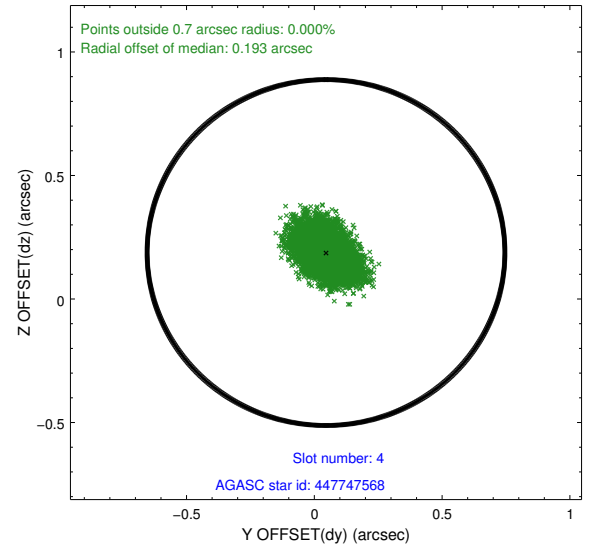
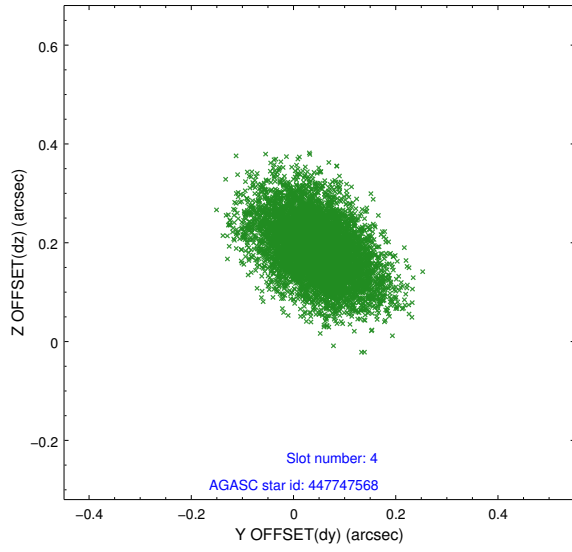
slot	status	used	id	mag	n_pts	med_dy	med_dz	dr1	dr2	ra	dec	mean_y	mean_z
0	FID		ACIS-S-2	7.10	3445	-0.185	-0.079	0.019	0.031	0.000000	0.000000	-777.24	-1741.19
1	FID		ACIS-S-4	7.20	3445	0.392	0.110	0.008	0.016	0.000000	0.000000	2136.47	167.11
2	FID		ACIS-S-5	7.21	3444	-0.240	-0.023	0.018	0.029	0.000000	0.000000	-1829.71	161.06
3	GUIDE	used	447744504	9.40	6884	0.249	0.347	0.126	0.213	130.406976	46.965618	-807.68	-93.14
4	GUIDE	used	447747568	7.69	6886	0.046	0.188	0.088	0.148	130.310745	47.480588	715.48	-1176.46
5	GUIDE	used	447752320	7.78	6889	-0.143	-0.223	0.106	0.161	129.373107	47.120240	1328.86	1382.41
6	GUIDE	used	447752984	9.36	6887	0.090	0.033	0.114	0.188	130.233225	46.429722	-1935.04	1528.34
7	GUIDE	used	447743768	8.82	6887	-0.239	-0.343	0.132	0.209	129.378303	46.791113	457.92	2185.95

2.4 Star Slots

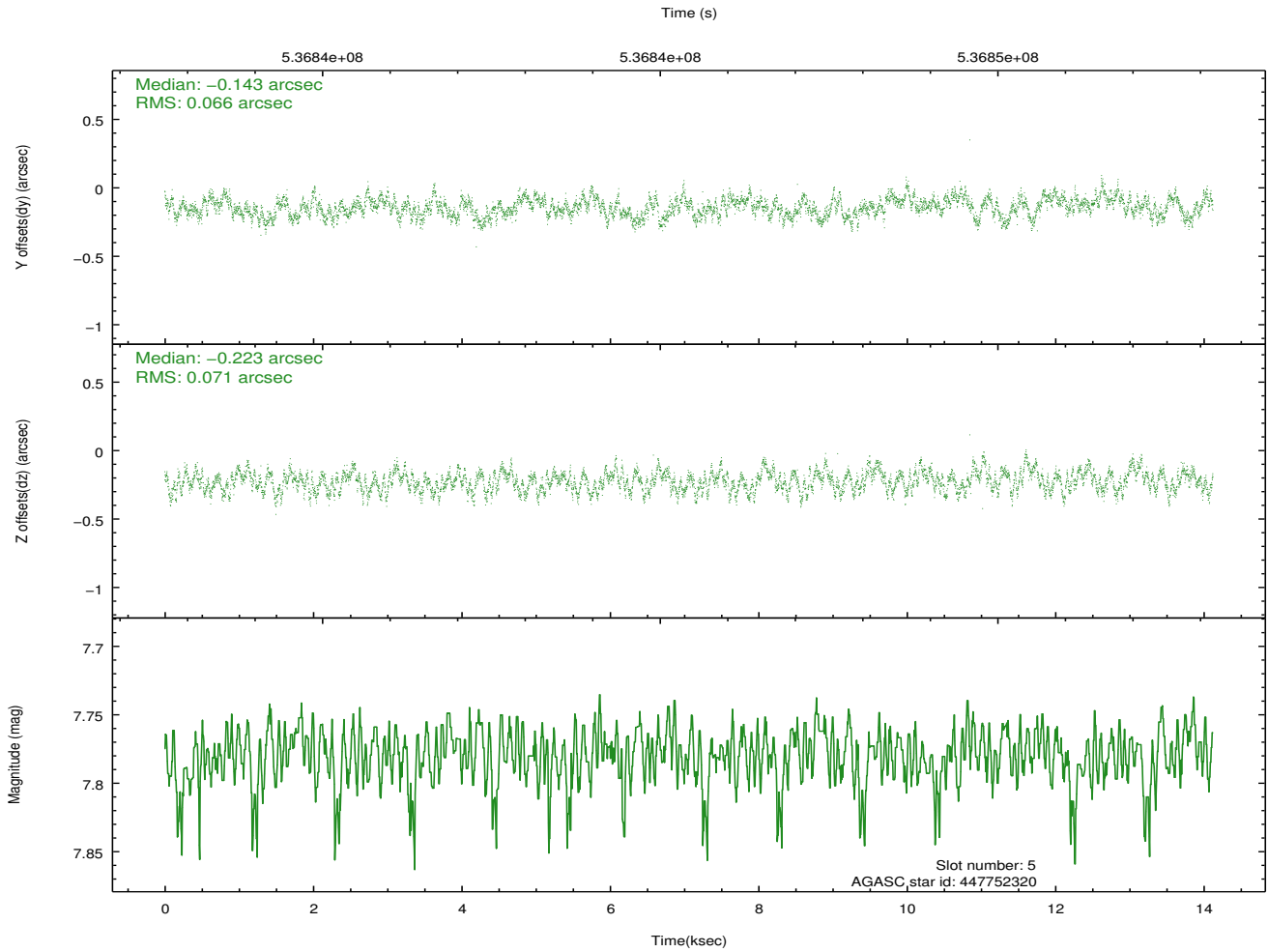
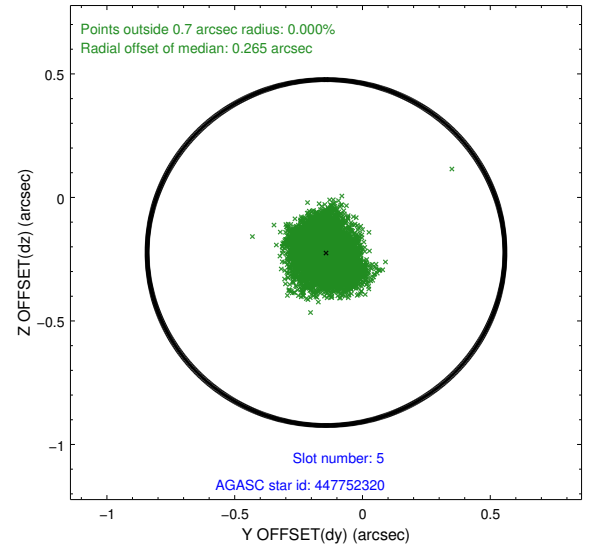
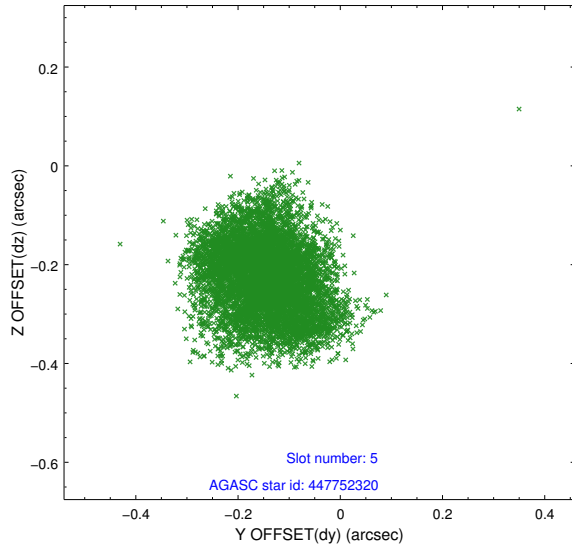
2.4.1 Slot 3



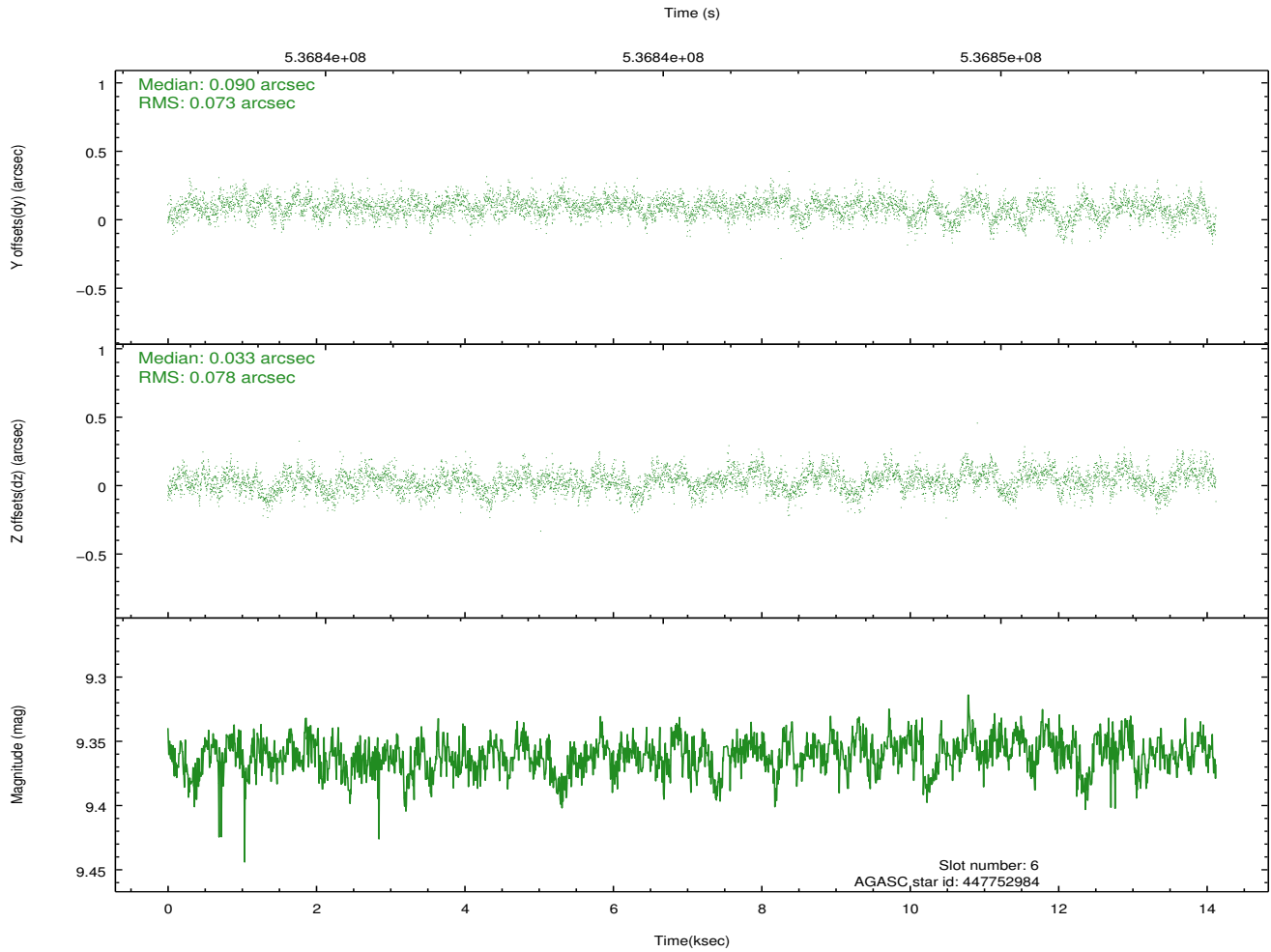
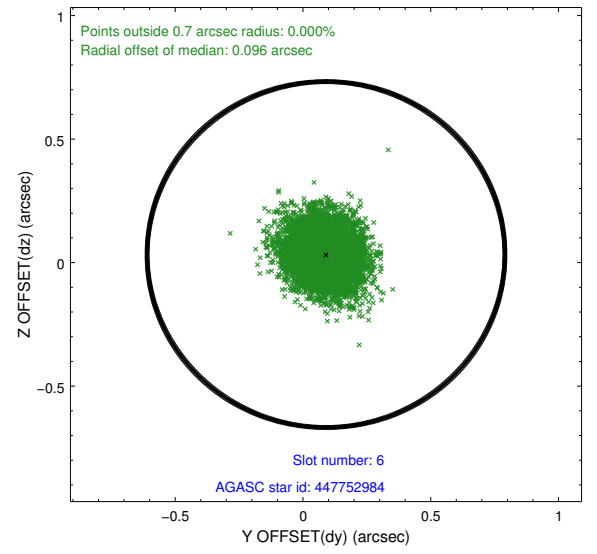
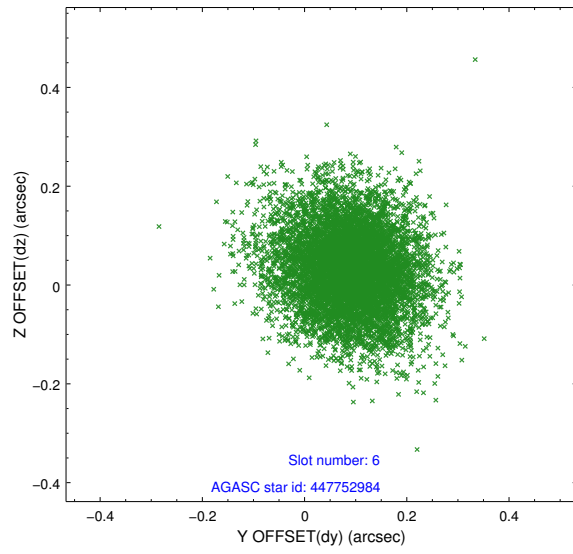
2.4.2 Slot 4



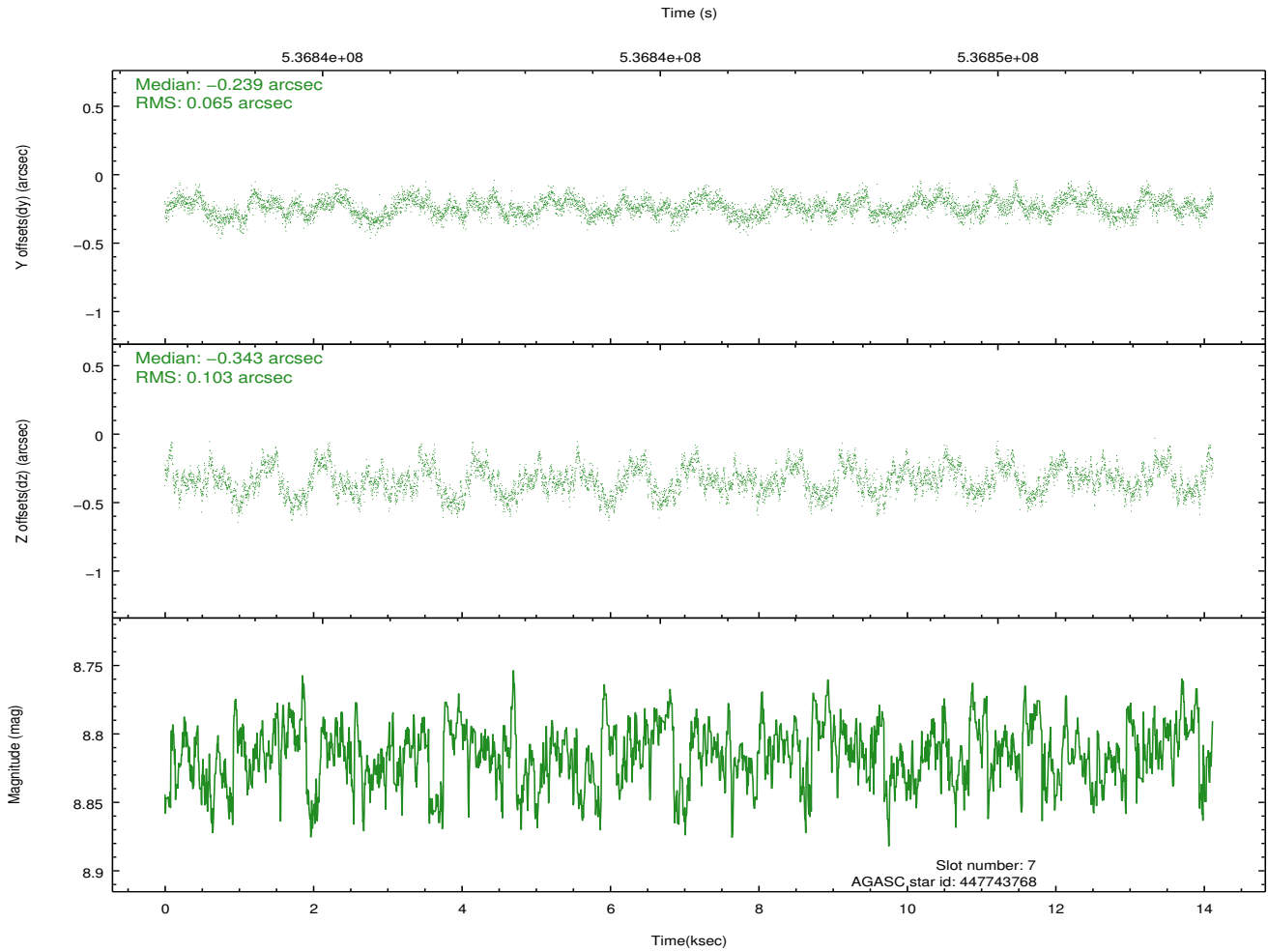
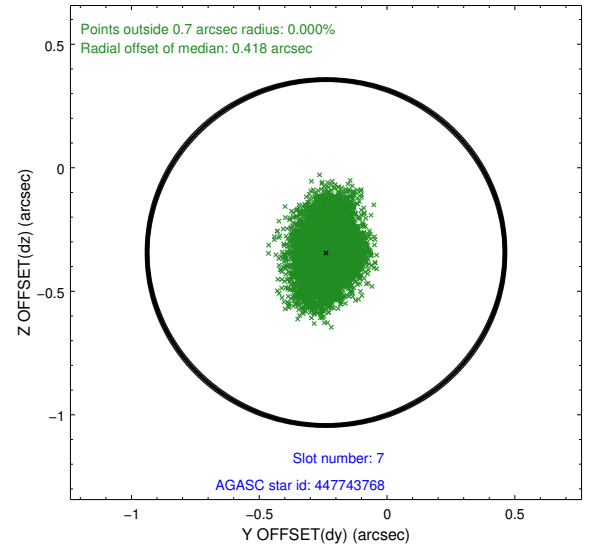
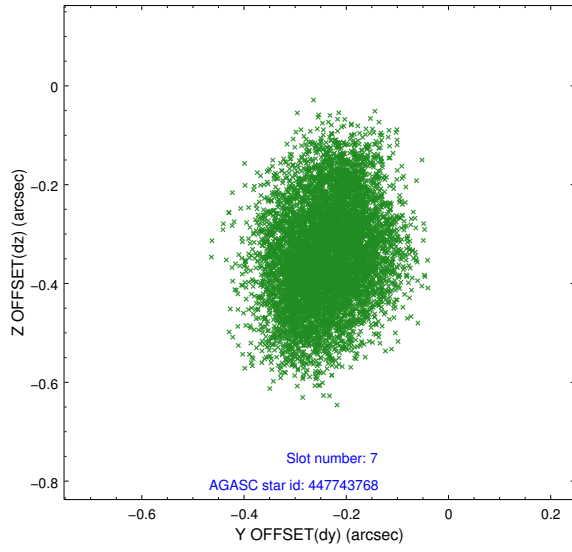
2.4.3 Slot 5



2.4.4 Slot 6

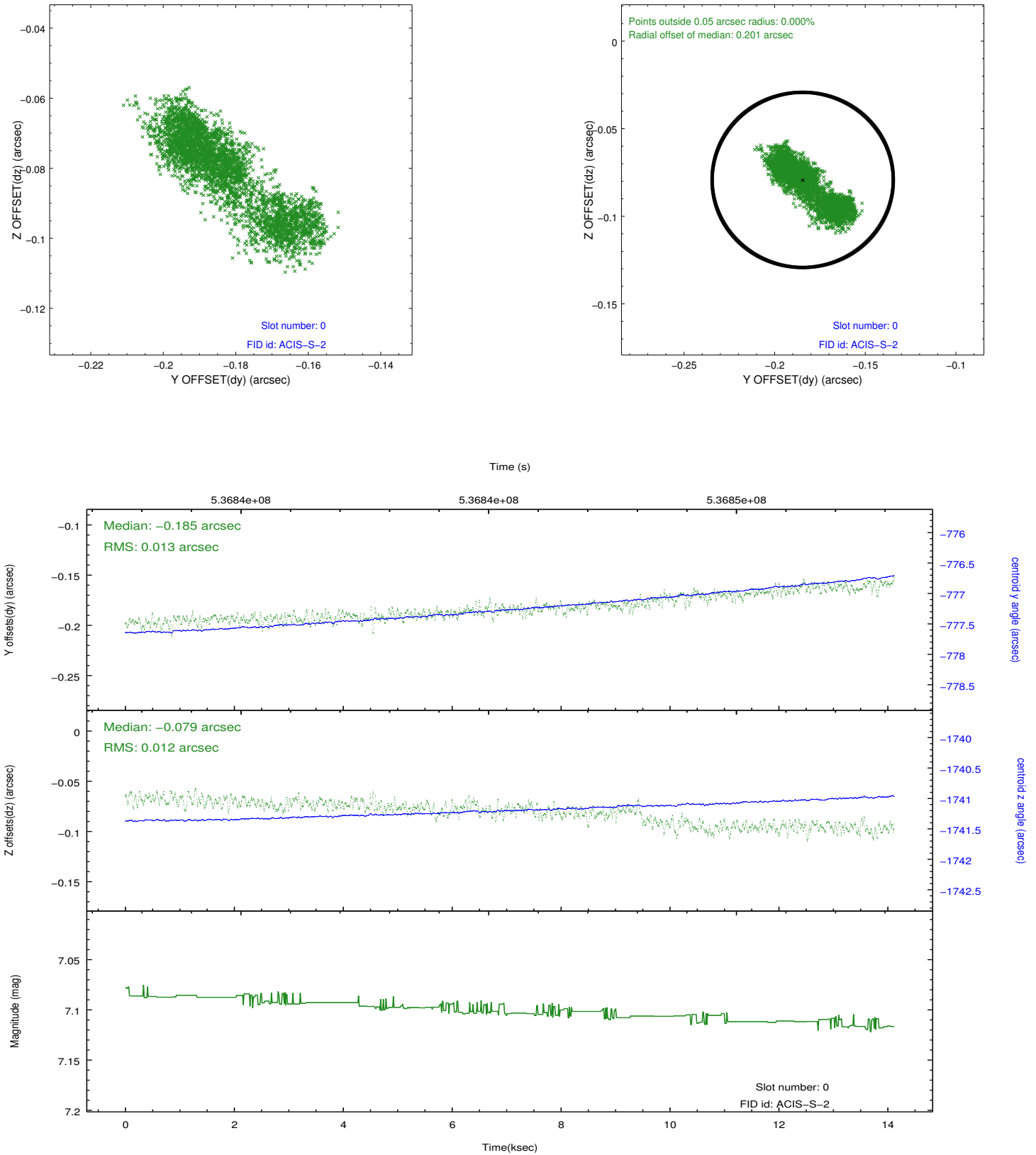


2.4.5 Slot 7

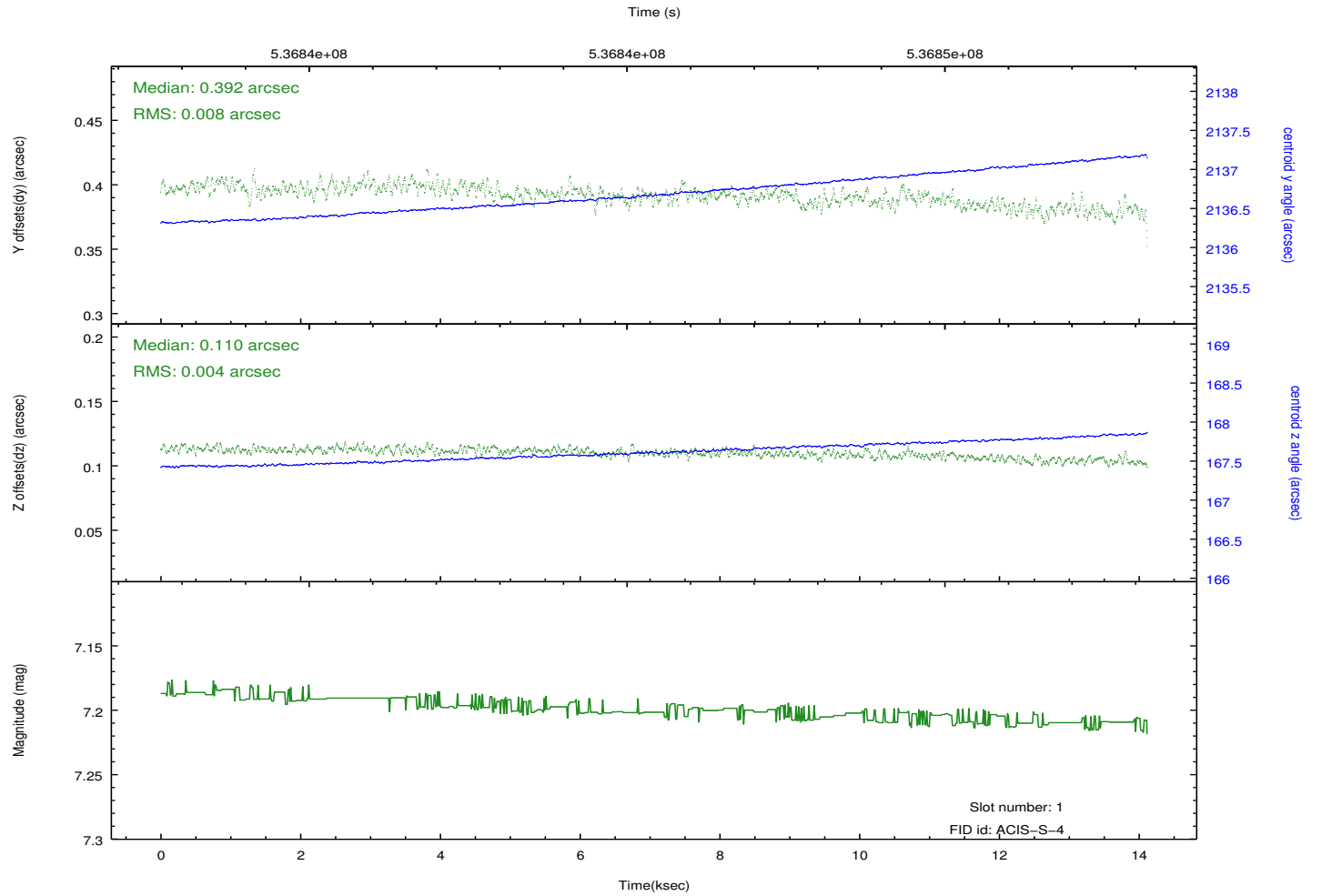
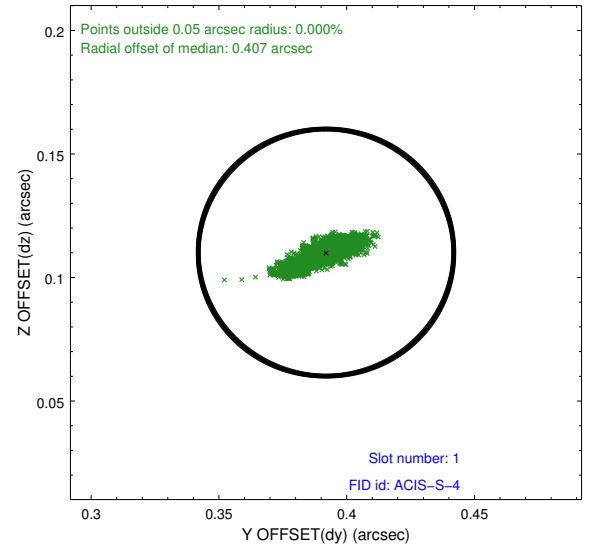
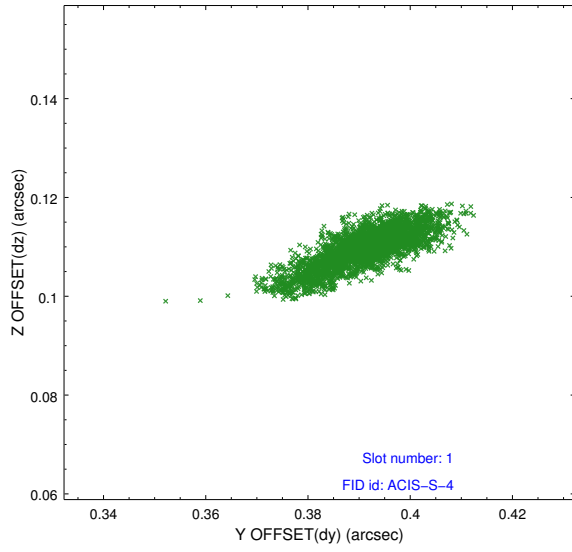


2.5 FID Slots

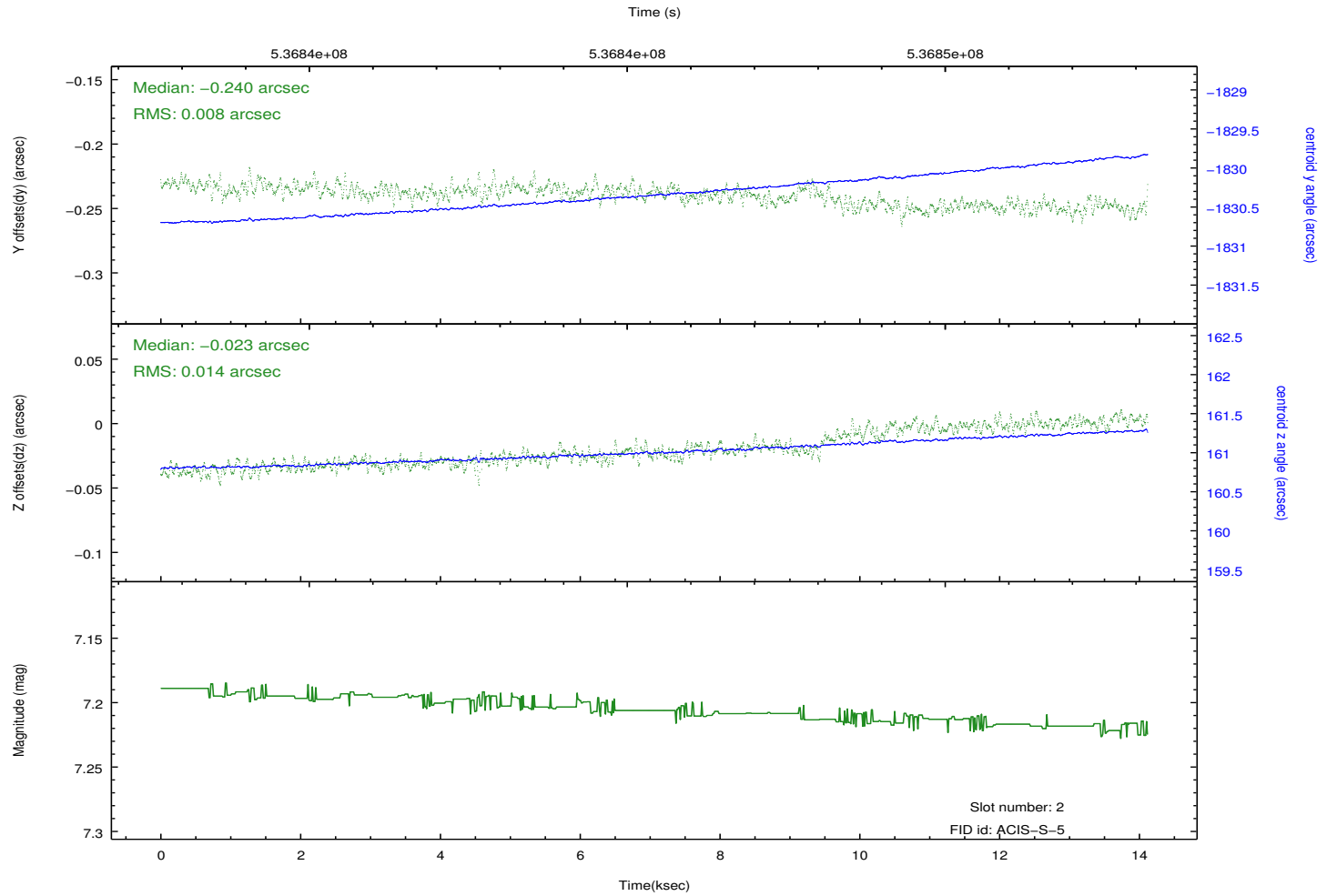
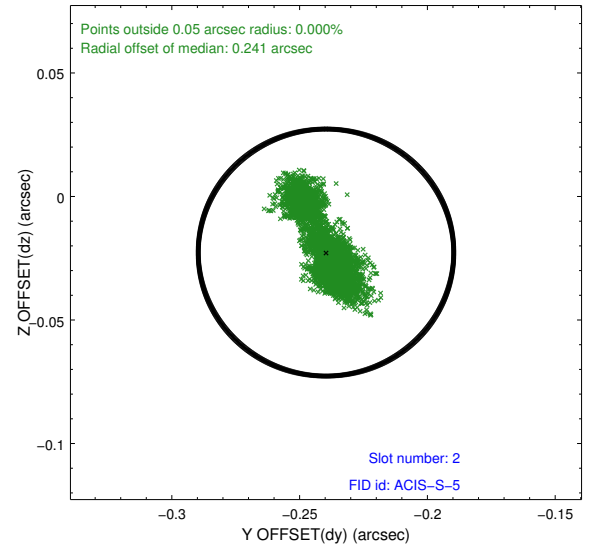
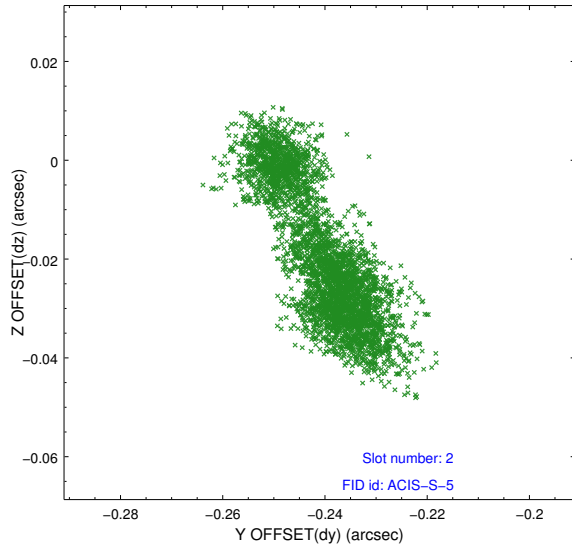
2.5.1 Slot 0



2.5.2 Slot 1



2.5.3 Slot 2



A Summary

A.1 Status

V&V Scientist	Joy Nichols
V&V Date (YYYY-MM-DD)	2015.01.06
V&V Edition	1
V&V Disposition and Status	OK
V&V Charge Time	13.06340010047

A.2 Comments

The slot 1 radial offset of 0.407 arcsec is acceptable.