

V&V Reference Report

L2 ASCDS Version : 8.4.5

Observation 1679 - L2 Version 3
Chandra X-Ray Center

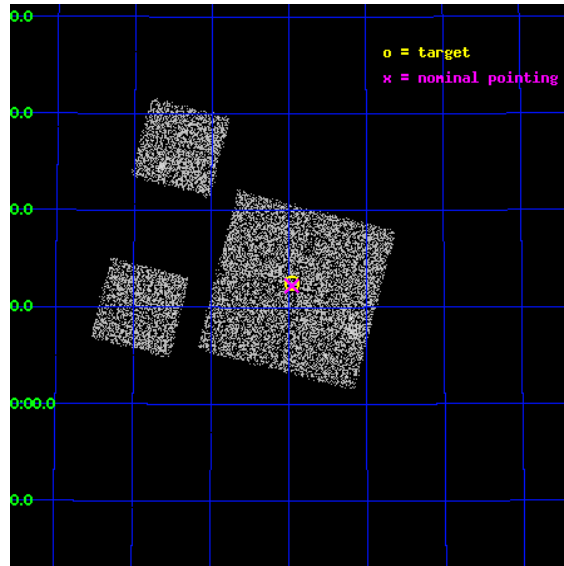
L2 Processing Date : Sep 20 2012

Contents

1	Front	2
2	OBI	3
2.1	OBI	3
2.1.1	Images	3
2.1.2	Bias	3
2.1.3	Parameters	4
2.1.4	Events	4
2.2	Compared Parameters	5
2.3	Aspect	6
2.4	Star Slots	9
2.4.1	Slot 3	9
2.4.2	Slot 4	10
2.4.3	Slot 5	11
2.4.4	Slot 6	12
2.4.5	Slot 7	13
2.5	FID Slots	14
2.5.1	Slot 0	14
2.5.2	Slot 1	15
2.5.3	Slot 2	16
A	Summary	17
A.1	Status	17
A.2	Comments	17

1 Front

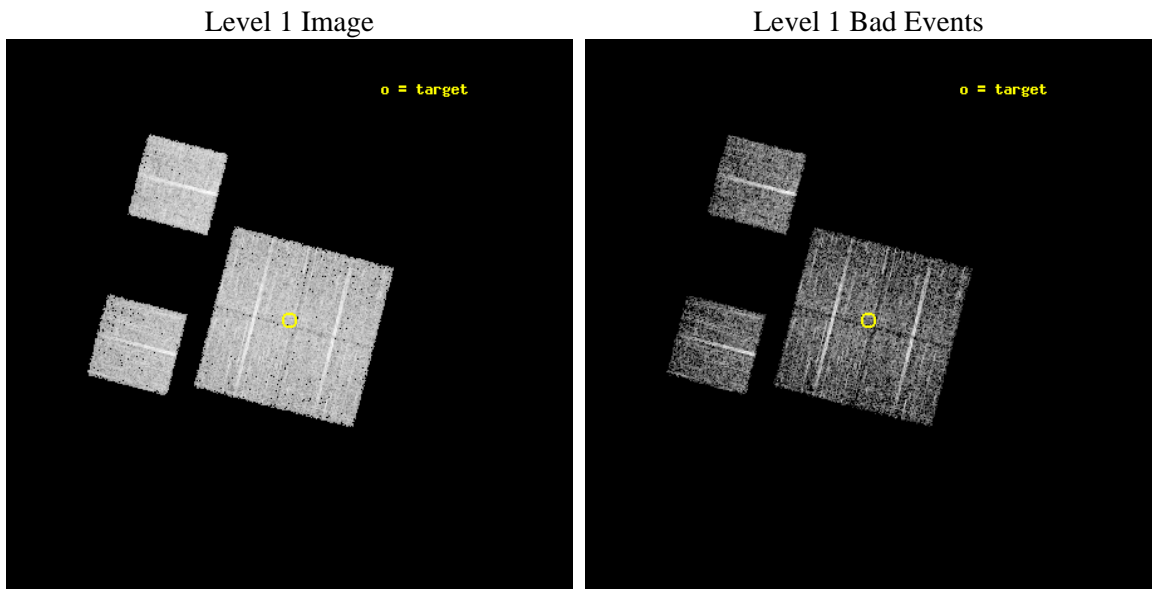
seq_num	900038	Sequence number
obs_id	1679	Observation id
title	LOCKMAN HOLE SHALLOW SURVEY	Proposal title
observer	Dr. Stephen Murray	Principal investigator
object	LOCKMAN HOLE #5	Source name
dtcycle	0	
cycle	P	events from which exps? Prim/Second/Both
ra_targ	162.741667	Observer's specified target RA [deg]
dec_targ	57.208889	Observer's specified target Dec [deg]
ra_nom	162.74035468354	Nominal RA [deg]
dec_nom	57.204229494189	Nominal Dec [deg]
roll_nom	284.45830585043	Nominal Roll [deg]
revision	3	Processing version of data
ontime	4760.6382629126	Sum of GTIs [s]
livetime	4700.3561947154	Livetime [s]
ontime0	4760.5151628256	Sum of GTIs [s]
ontime1	4760.5561829209	Sum of GTIs [s]
ontime2	4760.5972428173	Sum of GTIs [s]
ontime3	4760.6382629126	Sum of GTIs [s]
ontime6	4760.4741228223	Sum of GTIs [s]
ontime8	4760.6793228239	Sum of GTIs [s]
l2events	18204	Number of level 2 events



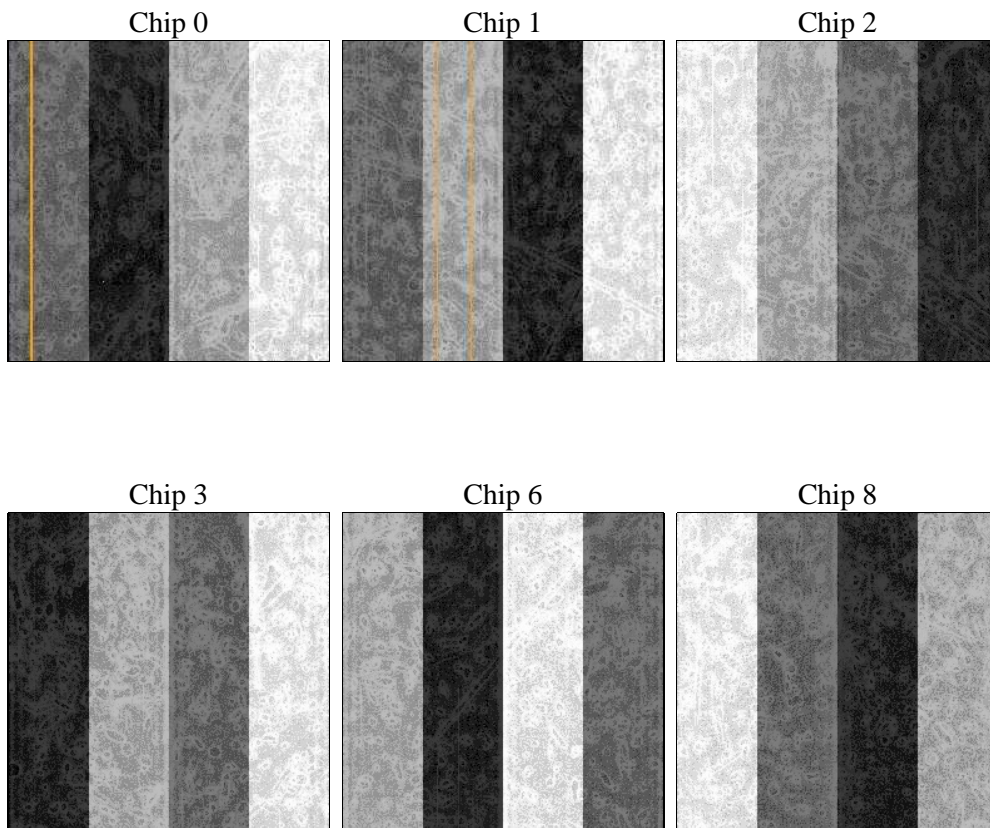
2 OBI

2.1 OBI

2.1.1 Images



2.1.2 Bias



2.1.3 Parameters

obi_num	0	Obi number	sched_exp_time	5000.000000	[s] Scheduled observation exposure time
ascdsver	8.4.5	Processing system revision	ontime	4760.6382629126	Sum of GTIs [s]
caldsver	4.5.1.1	 	ontime0	4760.5151628256	Sum of GTIs [s]
date	2012-09-20T12:43:00	Date and time of file creation	ontime1	4760.5561829209	Sum of GTIs [s]
revision	3	Processing version of data	ontime2	4760.5972428173	Sum of GTIs [s]
			ontime3	4760.6382629126	Sum of GTIs [s]
			ontime6	4760.4741228223	Sum of GTIs [s]
			ontime8	4760.6793228239	Sum of GTIs [s]
			l1events	189330	Number of level 1 events

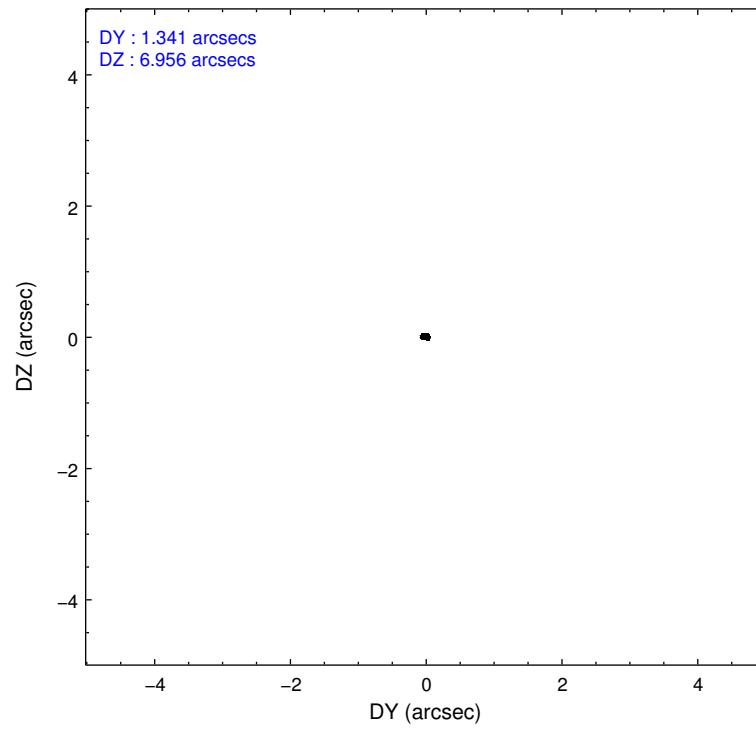
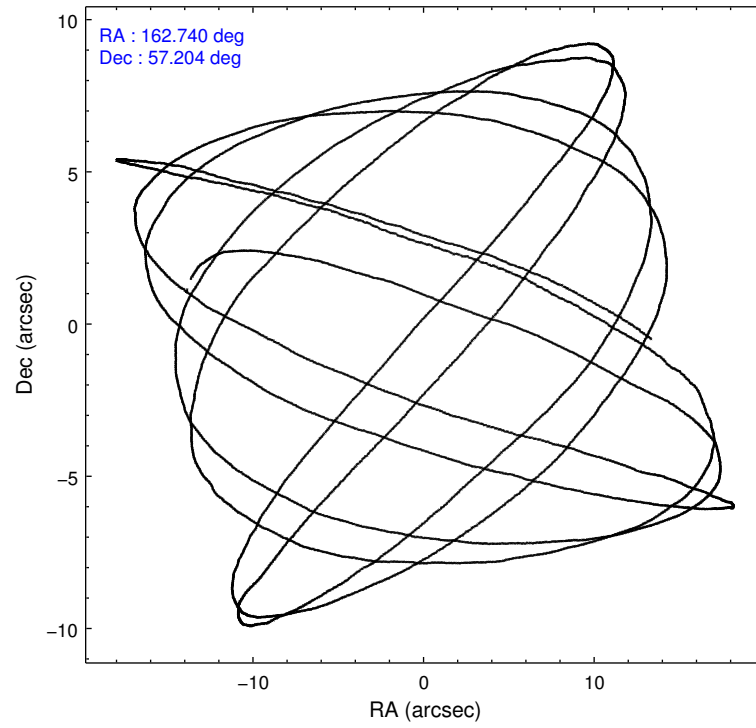
2.1.4 Events

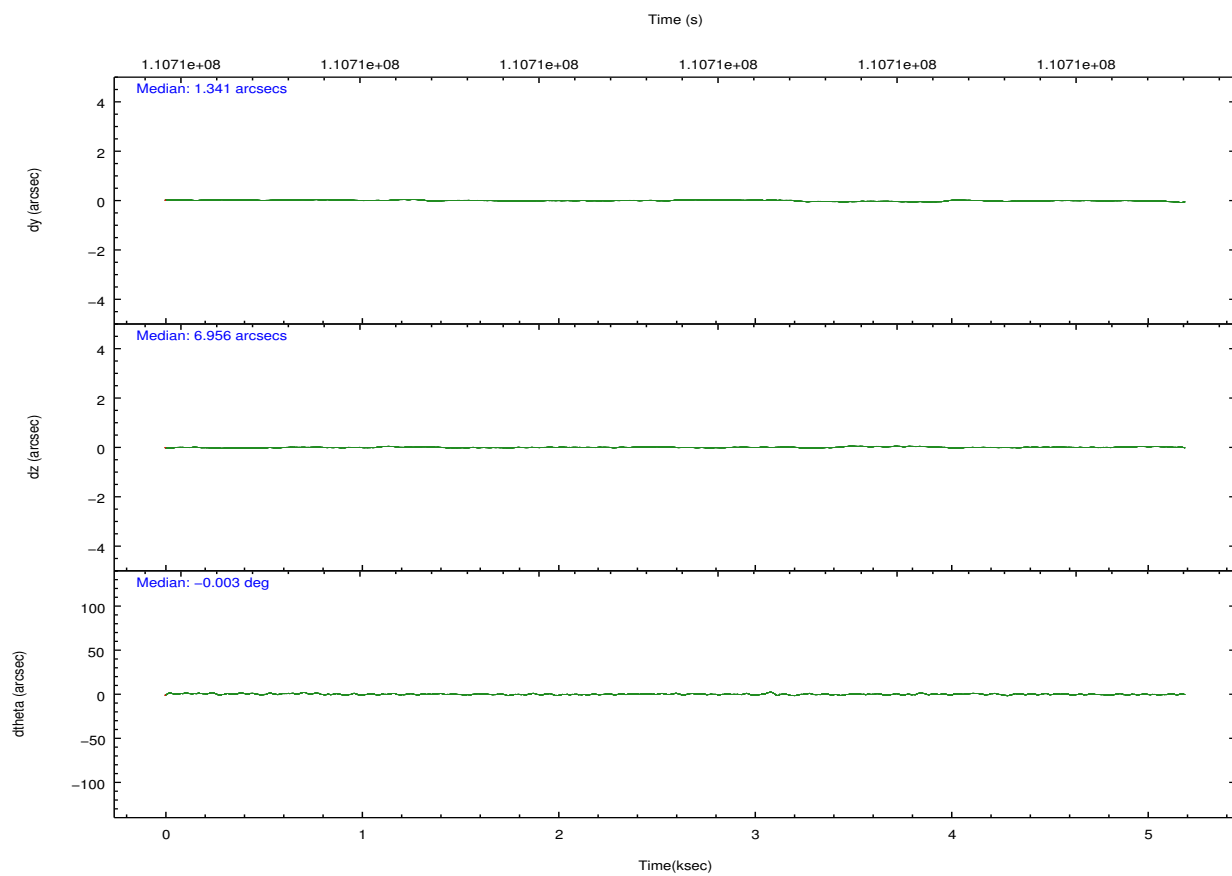
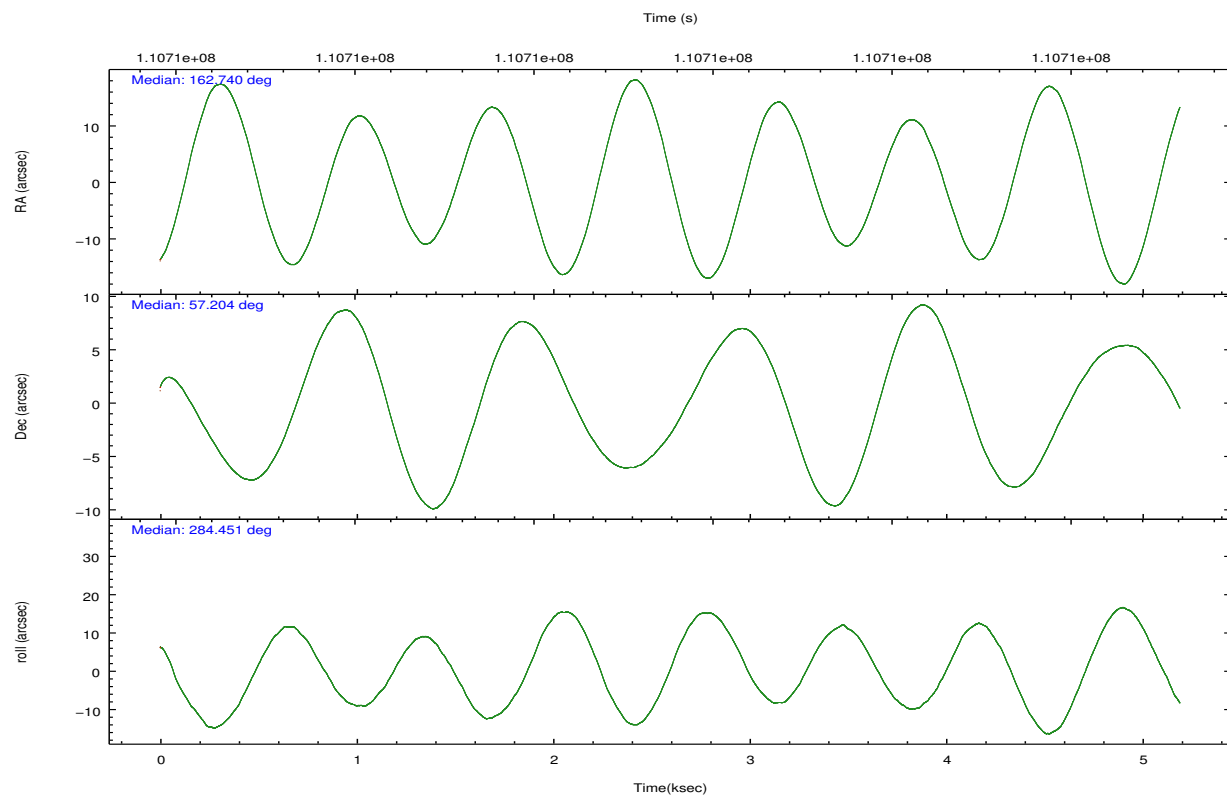
	ccd 0	ccd 1	ccd 2	ccd 3	ccd 6	ccd 8		ccd 0	ccd 1	ccd 2	ccd 3	ccd 6	ccd 8
level 1 events	28536	28633	31475	31252	29326	40108	grade 0 events	1646	1495	1507	1442	1320	2276
rejected events	24806	24955	28080	27788	25949	32596		5%	5%	4%	4%	4%	5%
rejected %	86%	87%	89%	88%	88%	81%	grade 1 events	11	13	15	14	19	27
								0%	0%	0%	0%	0%	0%
							grade 2 events	796	754	672	720	709	1621
								2%	2%	2%	2%	2%	4%
							grade 3 events	332	371	299	311	348	853
								1%	1%	0%	0%	1%	2%
							grade 4 events	331	349	320	342	339	794
								1%	1%	1%	1%	1%	1%
							grade 5 events	1062	1173	1034	1175	1187	1610
								3%	4%	3%	3%	4%	4%
							grade 6 events	628	710	600	652	661	1970
								2%	2%	1%	2%	2%	4%
							grade 7 events	23730	23768	27028	26596	24743	30957
								83%	83%	85%	85%	84%	77%

2.2 Compared Parameters

Parameter	Planned	Actual	Parameter	Planned	Actual
Instrument	ACIS	ACIS	Obspar format version number	7	7
Detector	ACIS-012368	ACIS-012368	Obspar file type	PREDICTED	ACTUAL
Grating	NONE	NONE	Obspar update status	NONE	UPDATED
Data mode	FAINT	FAINT	Number of optional ACIS chips dropped	0	0
Observation mode	POINTING	POINTING	On-chip summing requested	N	N
[deg] Pointing RA	162.704829	162.7403546835398	Subarray requested	NONE	NONE
[deg] Pointing Dec	57.223767	57.20422949418897	Alternating exposures requested	N	N
[deg] Pointing Roll	284.279500	284.4583058504317	[s] Primary exposure time	0.000000	3.2
[mm] SIM focus pos	-0.782348	-0.7809083437167272			
[mm] SIM defocus	0	0.001439871863259334			
[mm] SIM translation stage pos	-233.592463	-233.5874344608287			
[mm] SIM translation stage offset	0	-0.005018542100998502			
[s] Observation start time (MET)	110708355.184000	110707852.83382			
Observation start date	2001-07-05T08:18:11	2001-07-05T08:10:52			
[s] Observation end time (MET)	110713355.184000	110713489.82154			
Observation end date	2001-07-05T09:41:31	2001-07-05T09:44:49			
Read mode	TIMED	TIMED			

2.3 Aspect



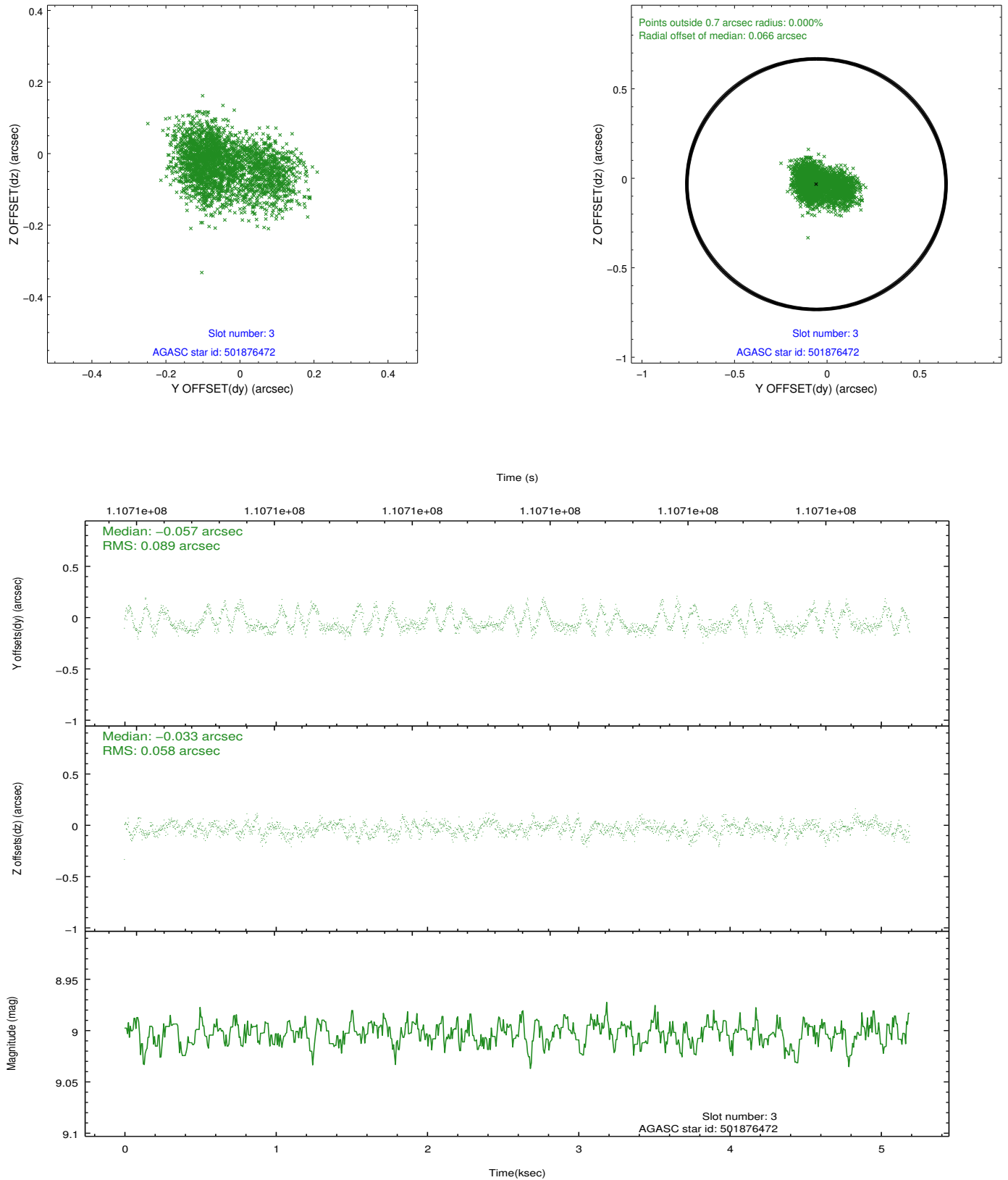


Slot Statistics

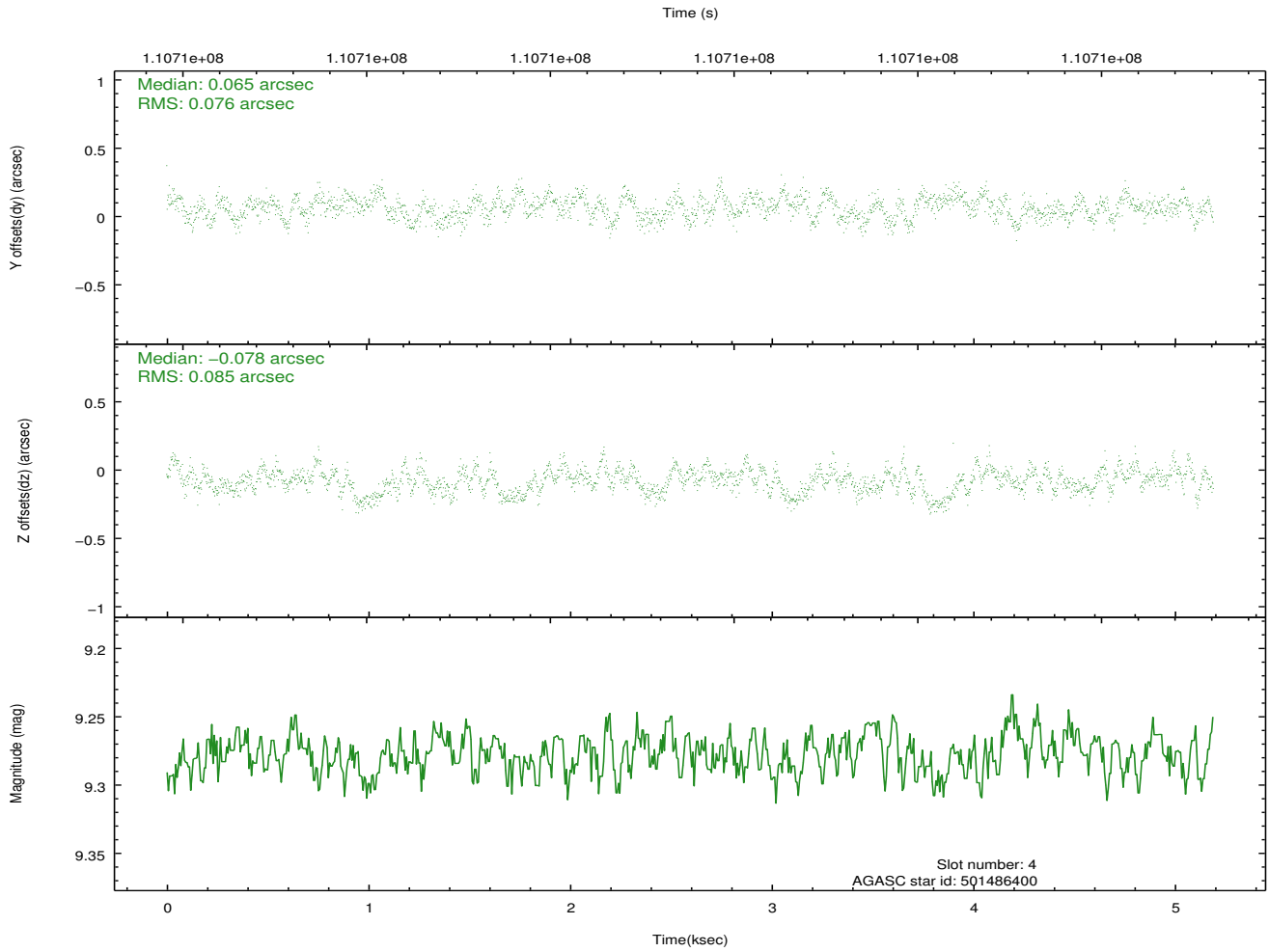
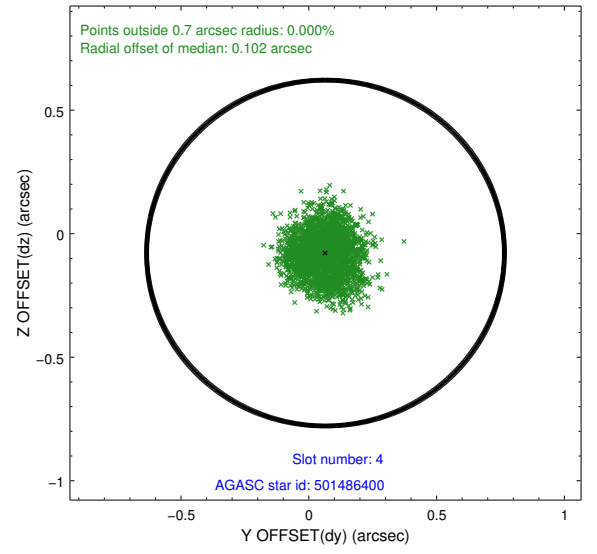
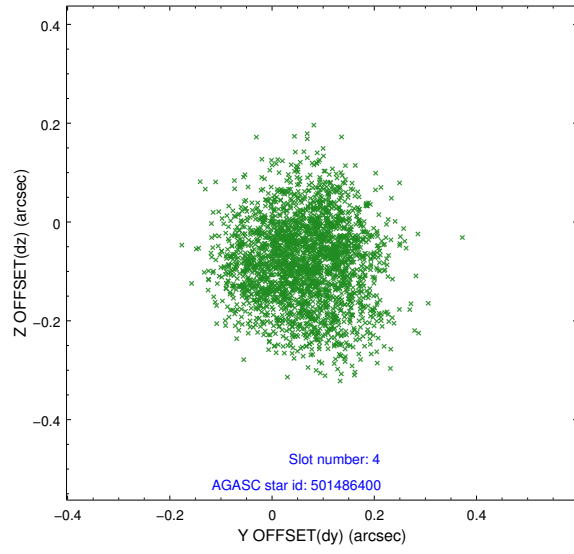
slot	status	id	mag	n_pts	med_dy	med_dz	dr1	dr2	ra	dec	mean_y	mean_z
0	FID	ACIS-I-2	7.15	1267	-0.035	-0.067	0.009	0.016	0.000000	0.000000	-755.70	-836.79
1	FID	ACIS-I-4	7.18	1267	-0.049	0.046	0.006	0.011	0.000000	0.000000	2157.80	1068.95
2	FID	ACIS-I-5	7.23	1267	-0.017	0.089	0.009	0.016	0.000000	0.000000	-1808.03	1068.12
3	GUIDE	501876472	9.00	2532	-0.057	-0.033	0.111	0.189	163.621724	57.867447	-1824.47	2275.72
4	GUIDE	501486400	9.28	2532	0.065	-0.078	0.125	0.191	162.514901	56.545412	2272.66	-966.21
5	GUIDE	501877264	9.32	2528	-0.030	0.153	0.118	0.181	163.254394	57.702218	-1411.94	1450.22
6	GUIDE	501487600	10.32	2531	0.041	0.075	0.225	0.347	161.712206	56.979739	357.12	-2099.37
7	GUIDE	501488528	8.11	2532	-0.030	-0.120	0.082	0.129	162.150935	57.312270	-578.31	-964.78

2.4 Star Slots

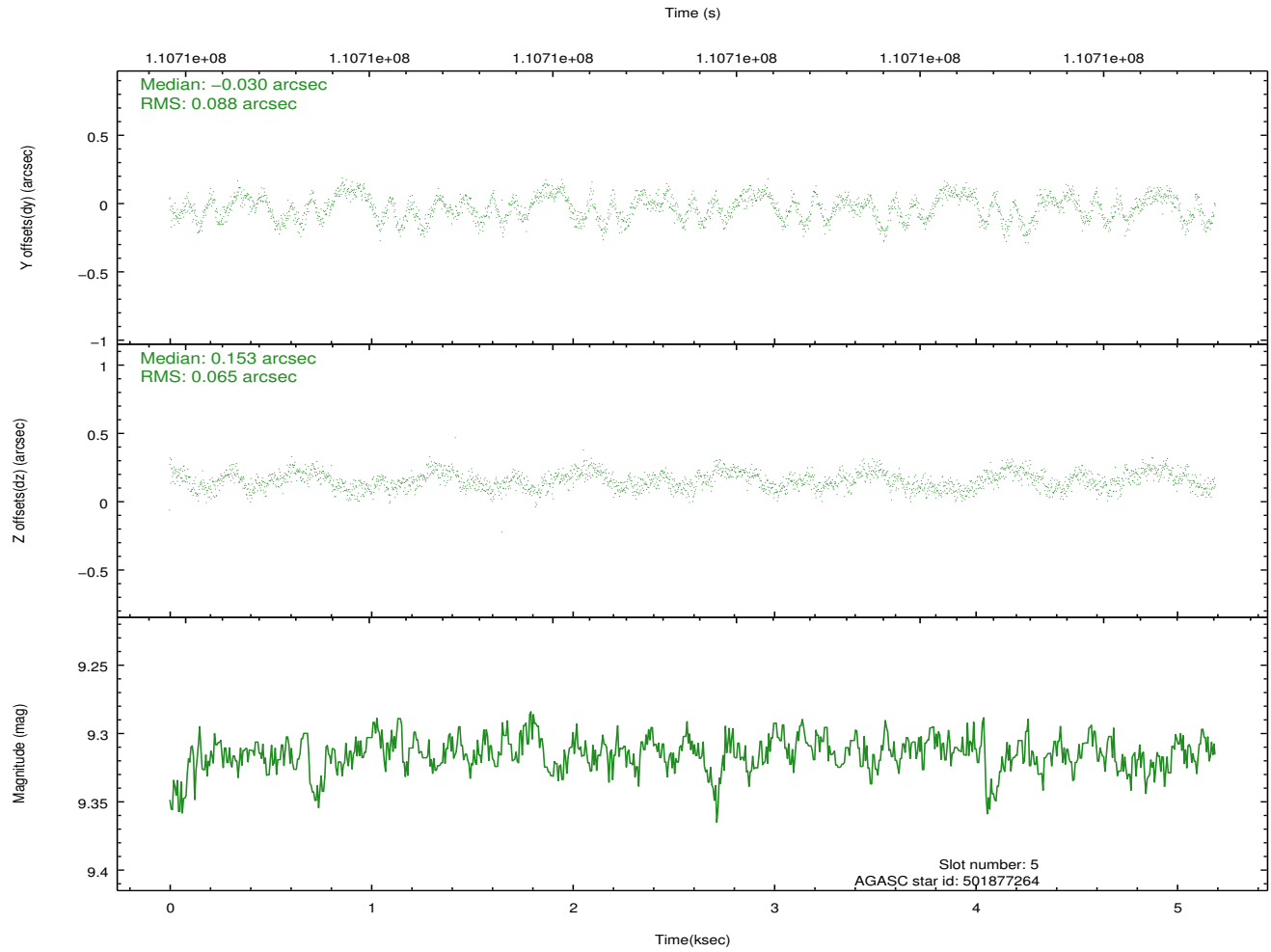
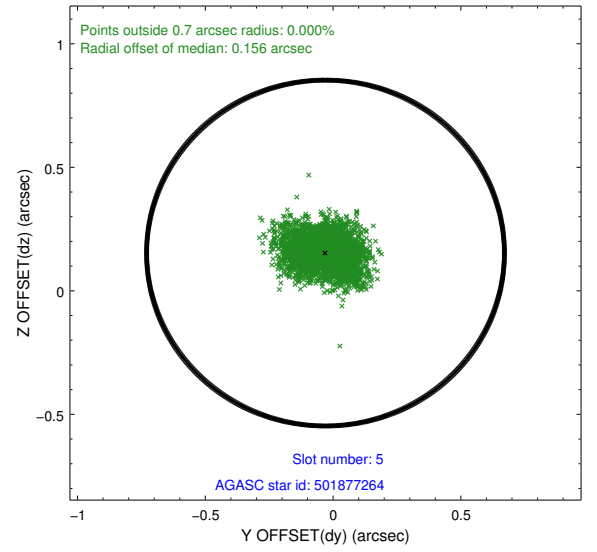
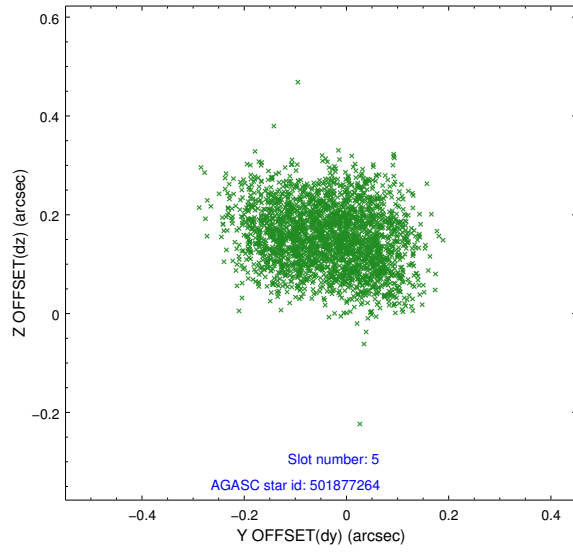
2.4.1 Slot 3



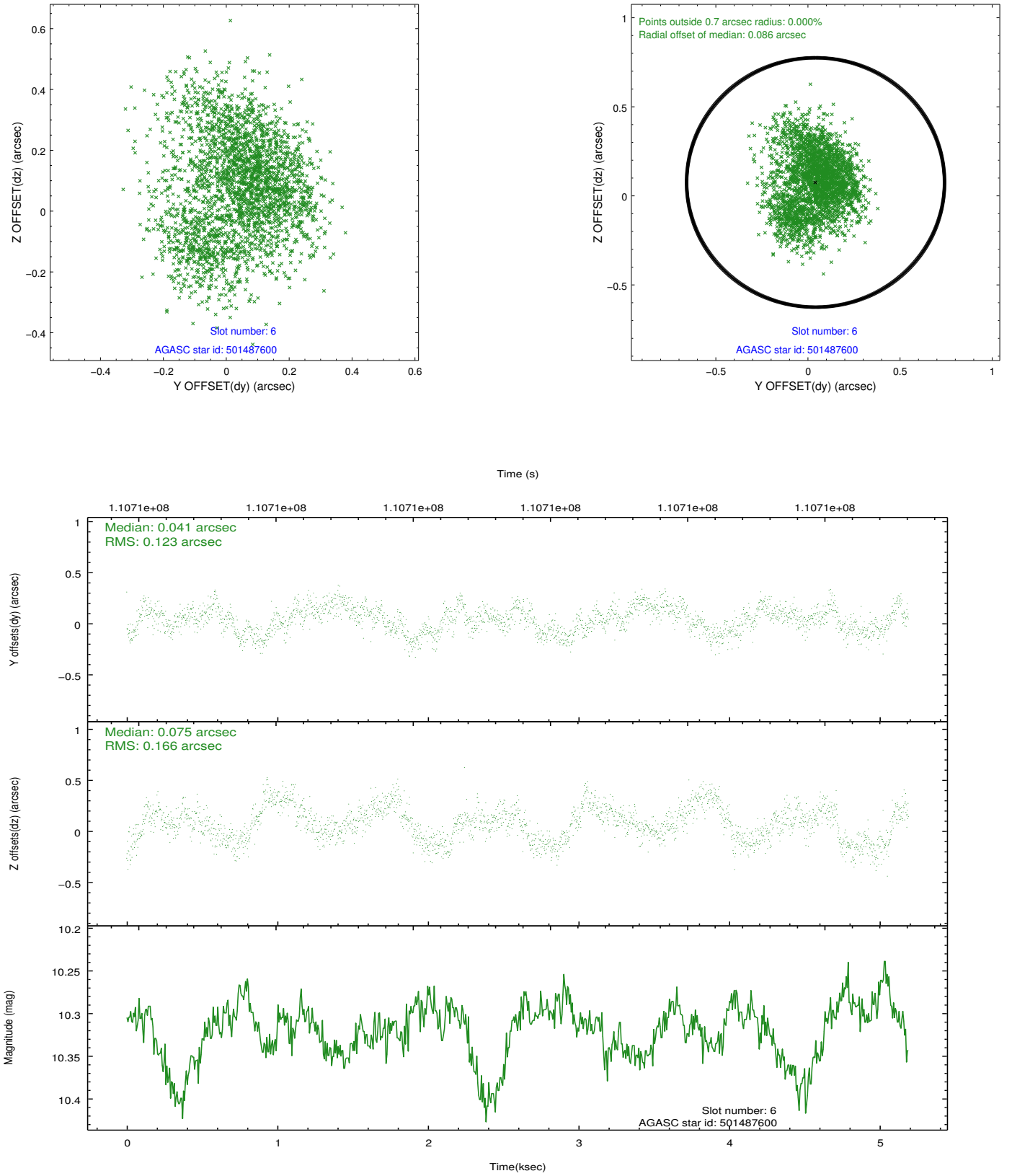
2.4.2 Slot 4



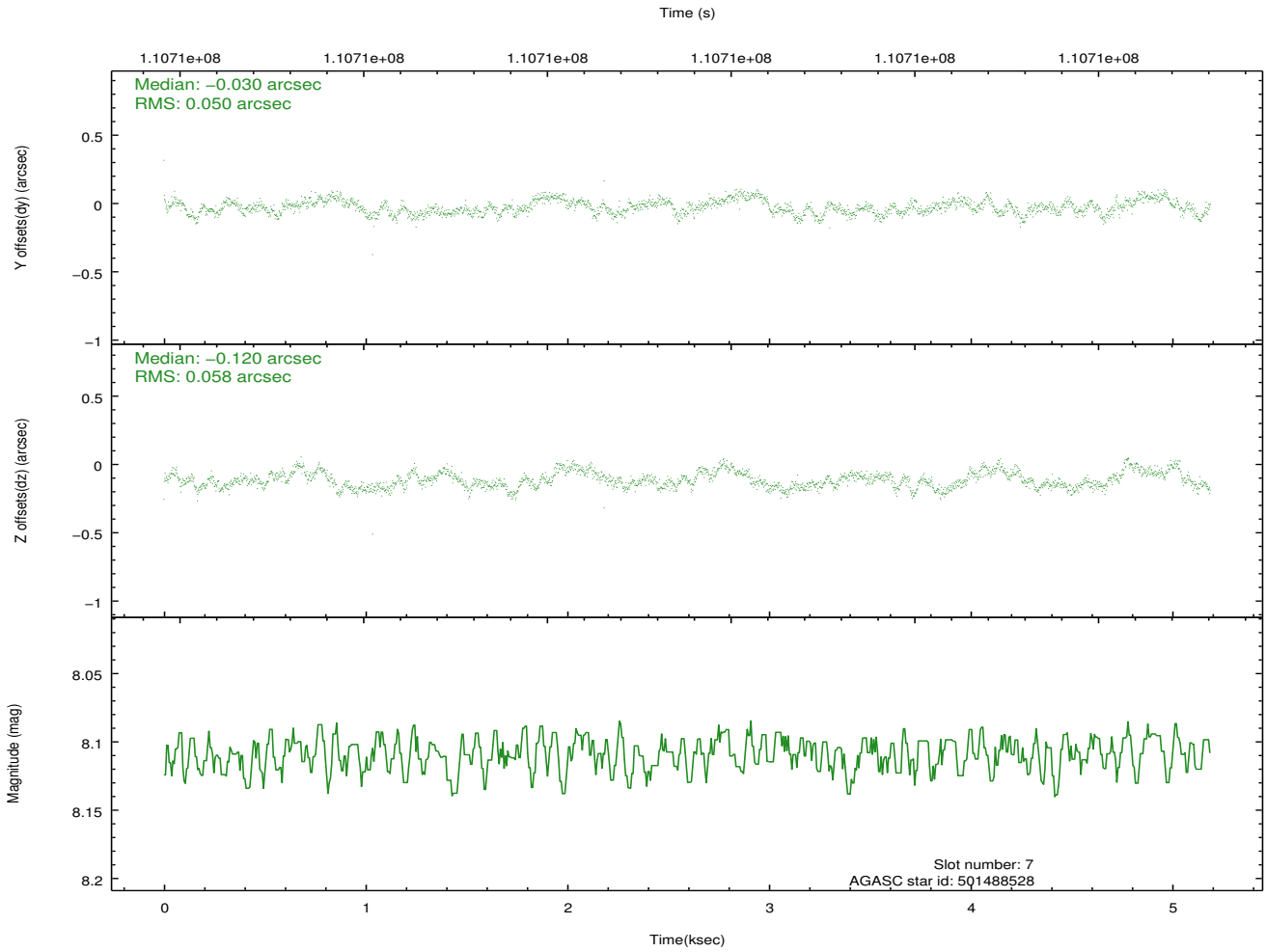
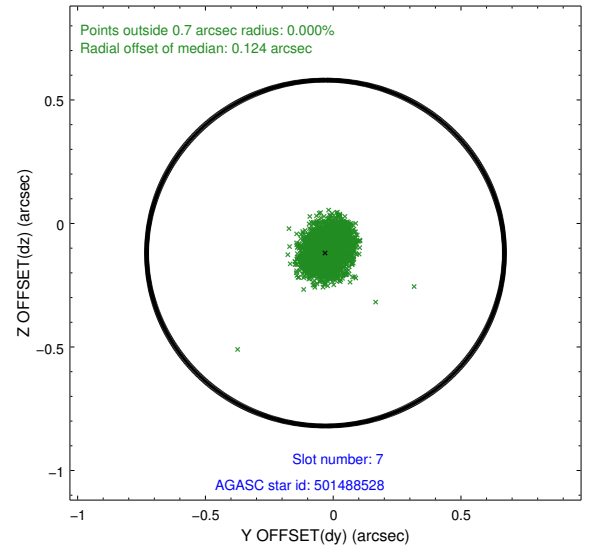
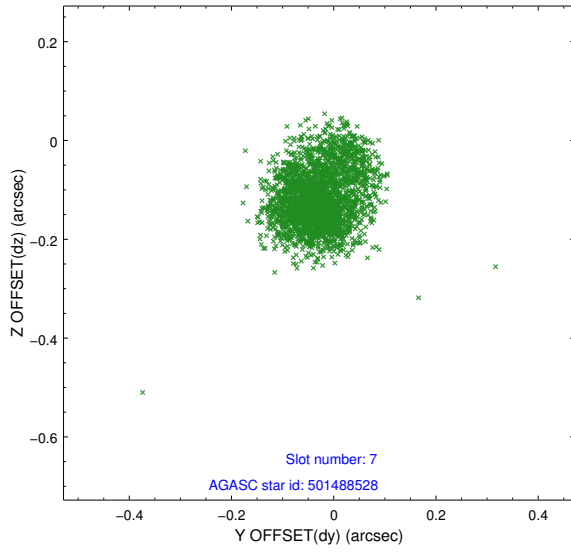
2.4.3 Slot 5



2.4.4 Slot 6

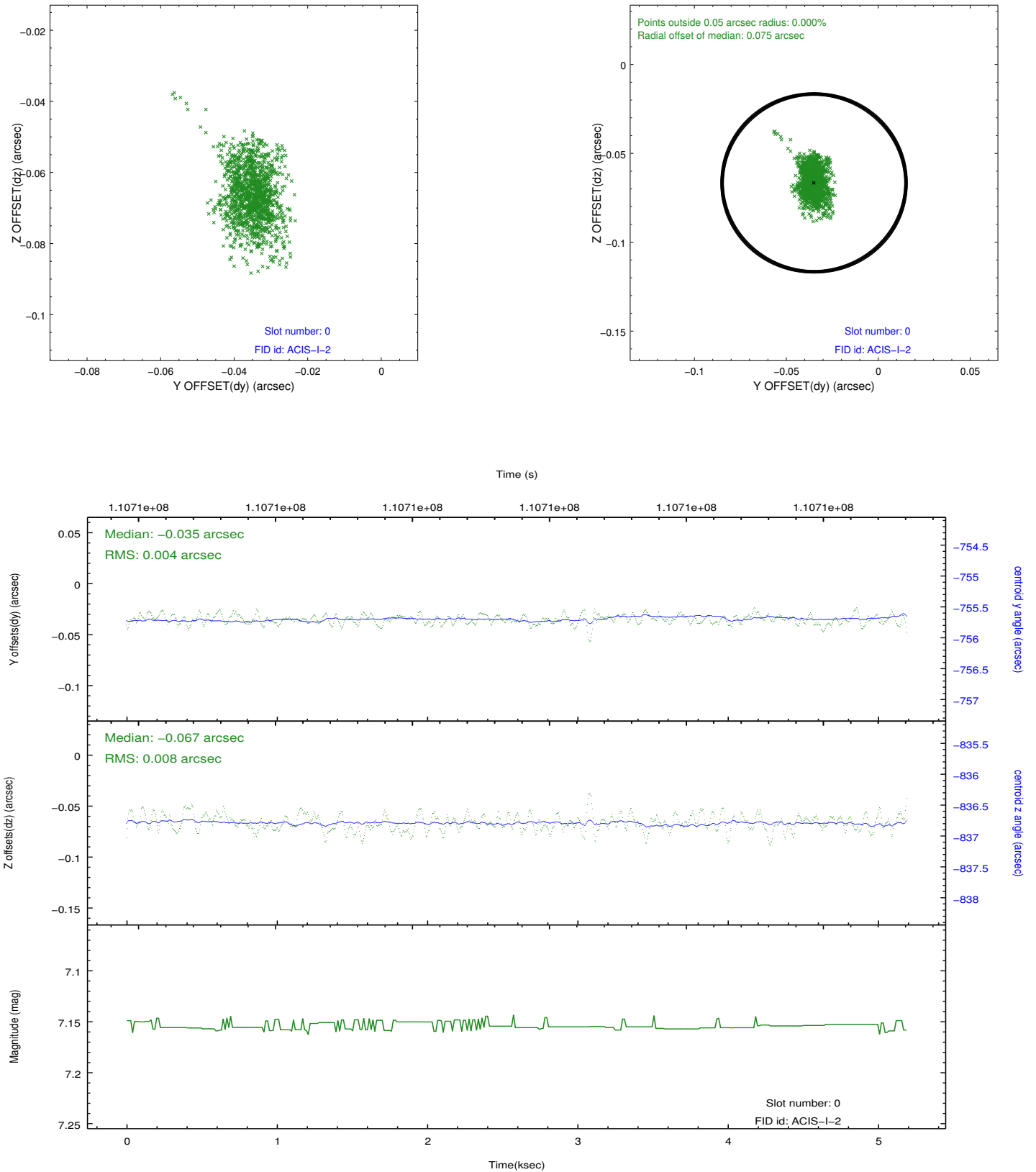


2.4.5 Slot 7

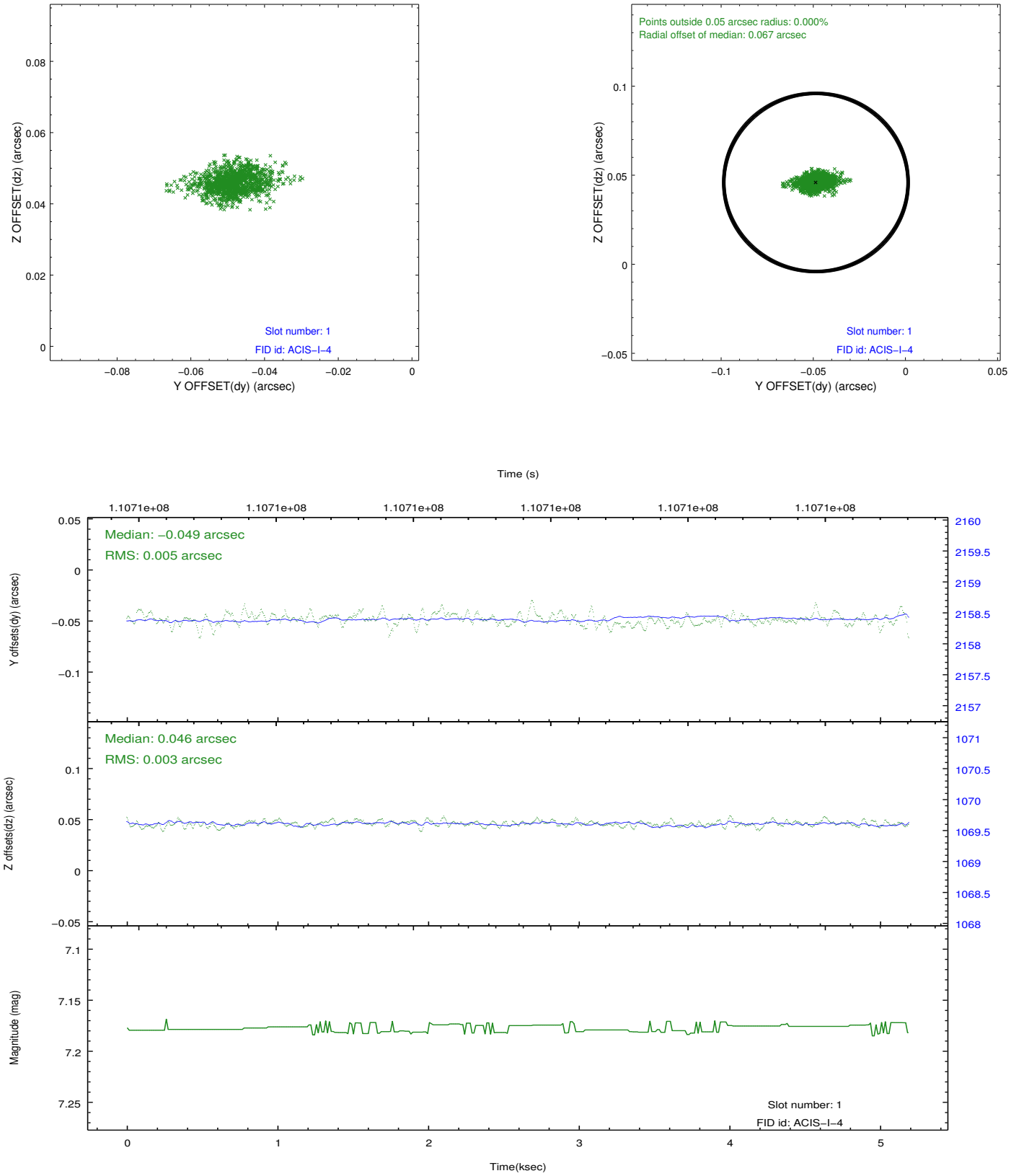


2.5 FID Slots

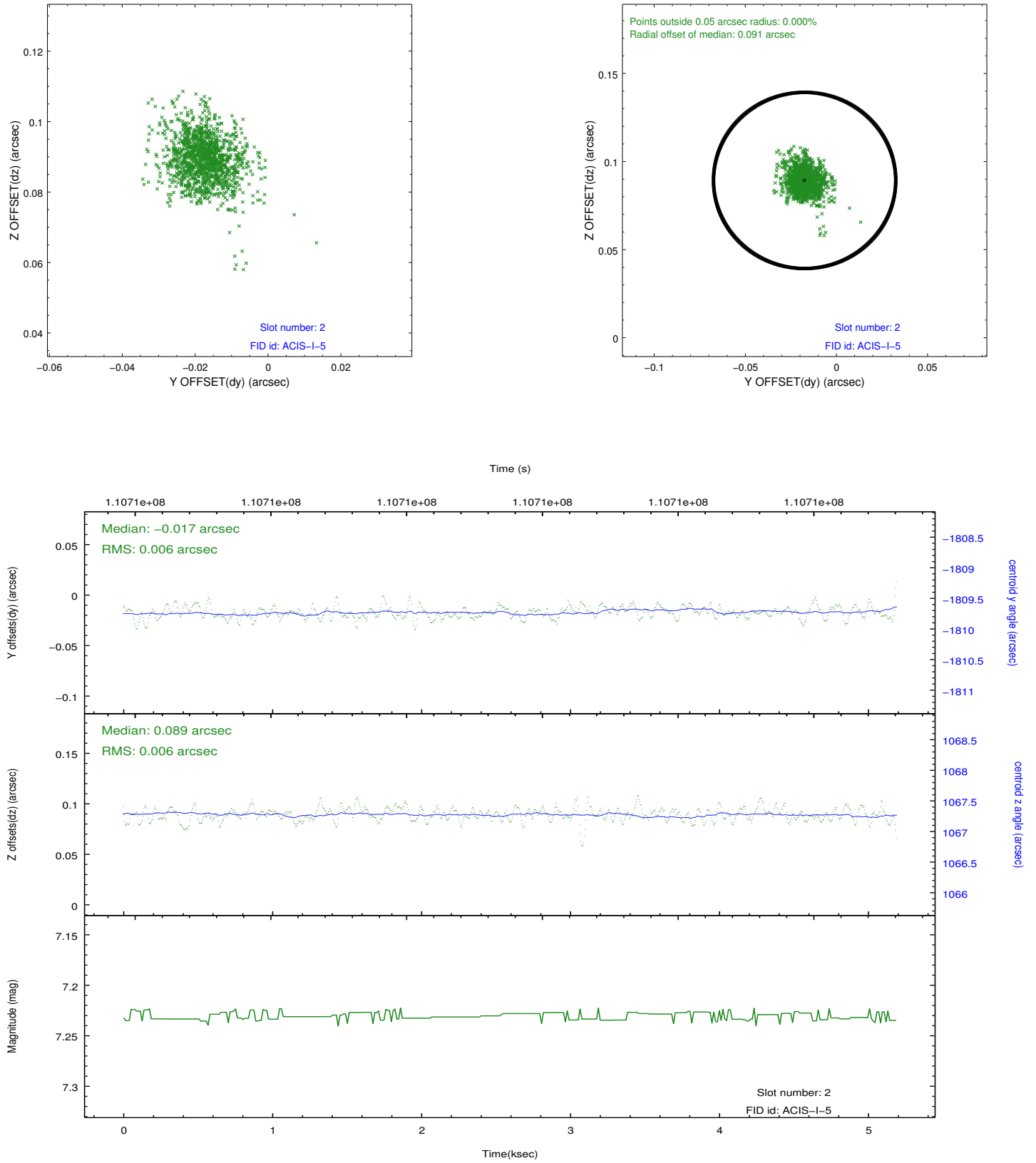
2.5.1 Slot 0



2.5.2 Slot 1



2.5.3 Slot 2



A Summary

A.1 Status

V&V Scientist	Jen Lauer
V&V Date (YYYY-MM-DD)	2012.09.21
V&V Edition	1
V&V Disposition and Status	OK
V&V Charge Time	4.761

A.2 Comments