

V&V Reference Report

L2 ASCDS Version : 7.6.9

Observation 1669 - L2 Version 001
Chandra X-Ray Center

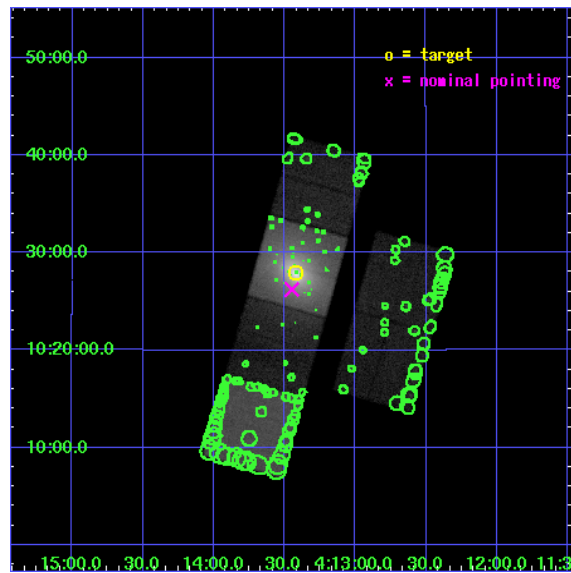
L2 Processing Date : Nov 4 2006

Contents

1	Front	2
2	OBI	3
2.1	OBI	3
2.1.1	Images	3
2.1.2	Bias	3
2.1.3	Parameters	4
2.1.4	Events	4
2.2	Compared Parameters	5
2.3	Aspect	6
2.4	Star Slots	9
2.4.1	Slot 3	9
2.4.2	Slot 4	10
2.4.3	Slot 5	11
2.4.4	Slot 6	12
2.4.5	Slot 7	13
2.5	FID Slots	14
2.5.1	Slot 0	14
2.5.2	Slot 1	15
2.5.3	Slot 2	16
3	Point Sources	17
A	Summary	18
A.1	Status	18
A.2	Comments	18

1 Front

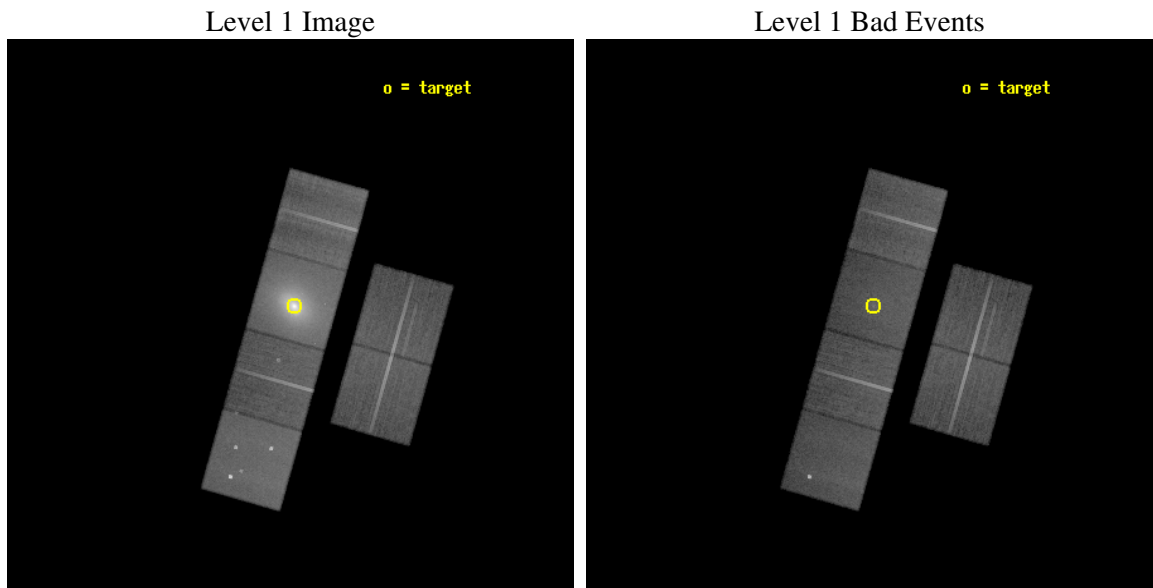
seq_num	800137
obs_id	1669
title	CHANDRA OBSERVATIONS OF THE COOLING FLOW CLUSTER A478
observer	Dr. Stephen Murray
object	A 478
dtcycle	0
cycle	P
ra_targ	63.355792
dec_targ	10.465847
ra_nom	63.362085640935
dec_nom	10.437266672153
roll_nom	285.77360700996
revision	2
ontime	42937.600039989
livetime	42393.898294364
ontime2	42934.359079733
ontime3	42934.359059826
ontime5	42937.600039989
ontime6	42937.600039989
ontime7	42937.600039989
ontime8	42937.600039989
l2events	796737



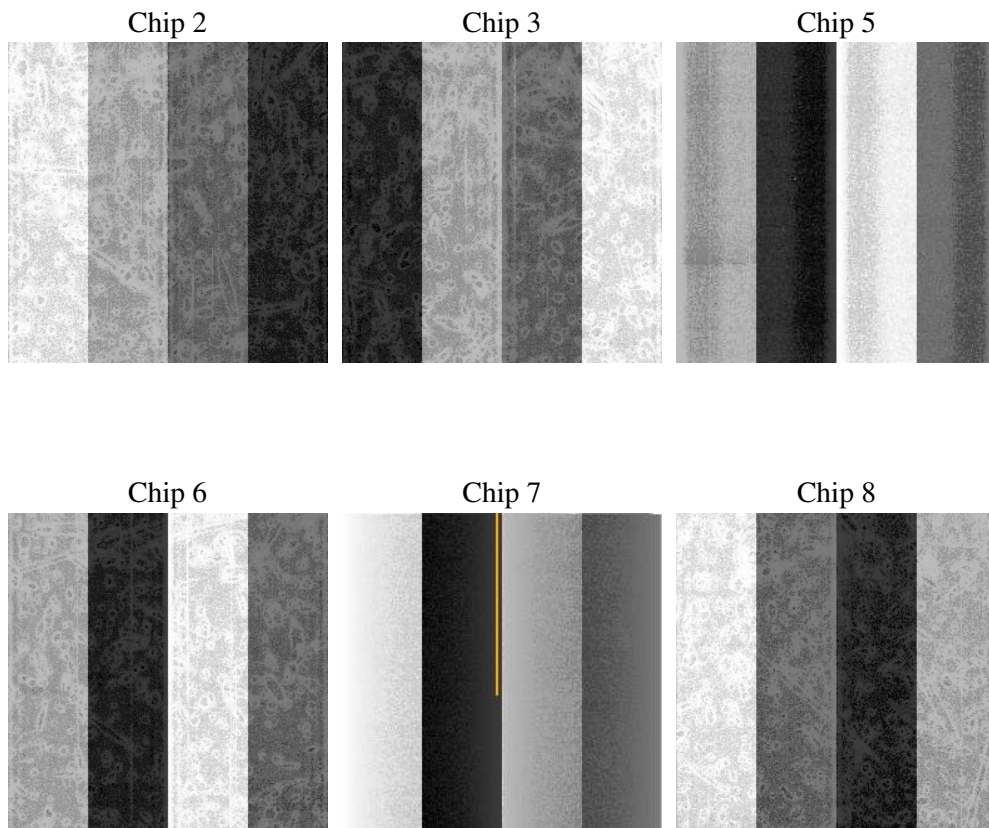
2 OBI

2.1 OBI

2.1.1 Images



2.1.2 Bias



2.1.3 Parameters

obi_num	0
ascdsver	7.6.9
caldsver	3.2.3
date	2006-11-04T11:54:20
revision	2

sched_exp_time	43000.000000
ontime	42943.232452691
ontime2	42939.991492435
ontime3	42939.991472527
ontime5	42943.232452691
ontime6	42943.232452691
ontime7	42943.232452691
ontime8	42943.232452691
l1events	2219893

2.1.4 Events

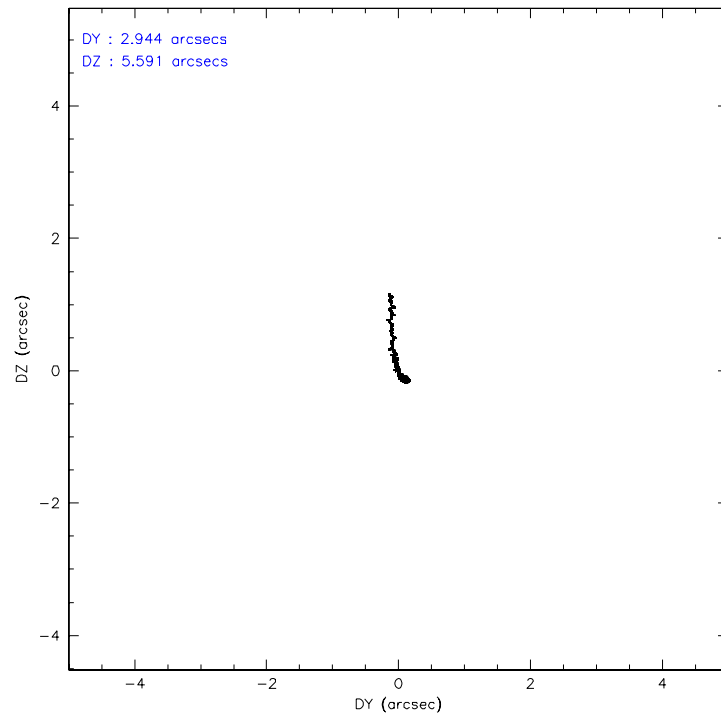
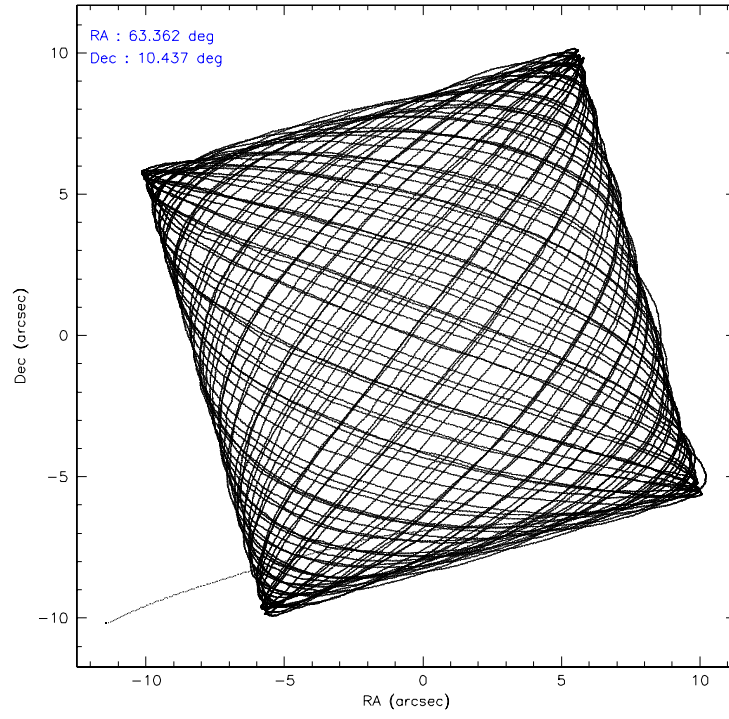
	ccd 2	ccd 3	ccd 5	ccd 6	ccd 7	ccd 8
level 1 events	263279	253531	364585	269001	736283	333214
rejected events	230862	221773	202017	227350	202889	251745
rejected %	87%	87%	55%	84%	27%	75%

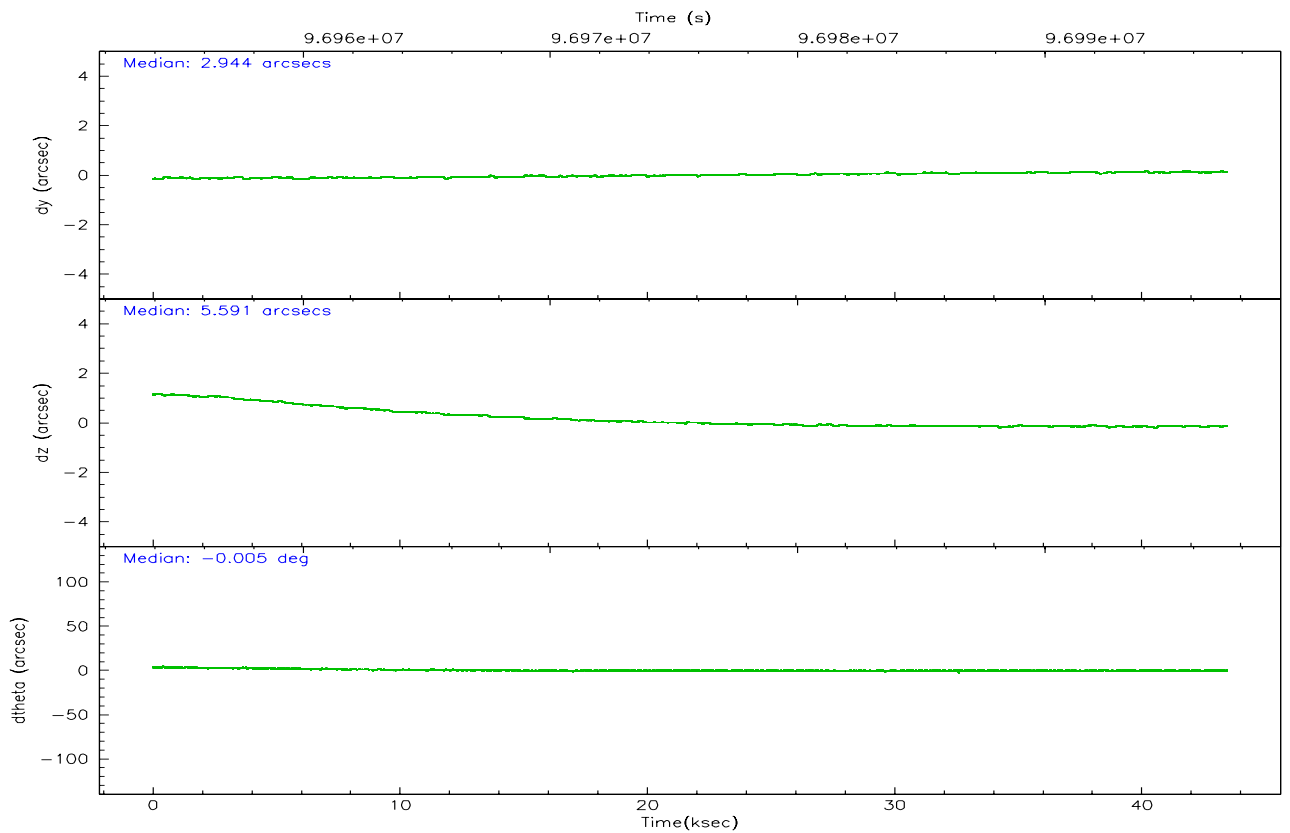
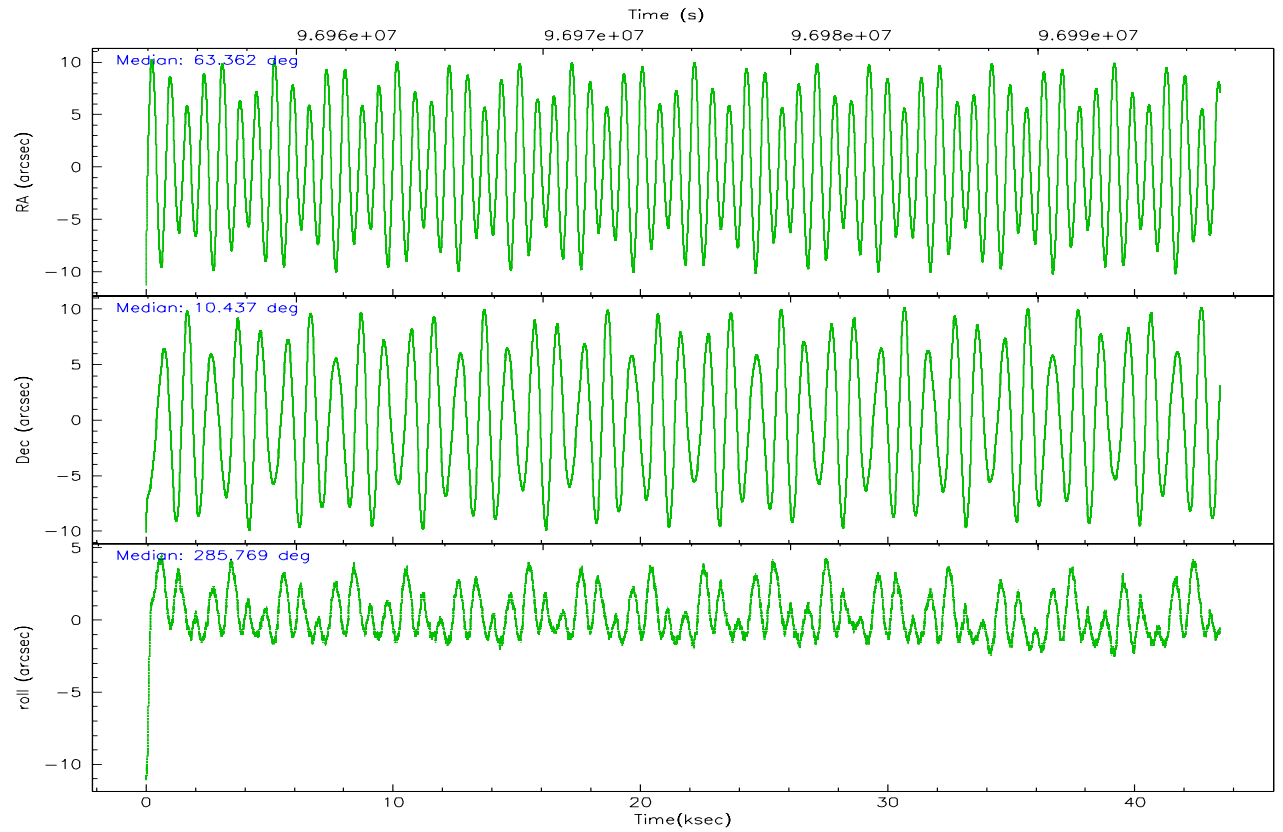
	ccd 2	ccd 3	ccd 5	ccd 6	ccd 7	ccd 8
grade 0 events	14640	14365	18258	21232	109333	29552
	5%	5%	5%	7%	14%	8%
grade 1 events	126	133	400	141	303	247
	0%	0%	0%	0%	0%	0%
grade 2 events	6772	6436	49729	7561	148323	15616
	2%	2%	13%	2%	20%	4%
grade 3 events	2793	2842	3885	3286	50906	9447
	1%	1%	1%	1%	6%	2%
grade 4 events	2853	2809	3504	3194	50440	8824
	1%	1%	0%	1%	6%	2%
grade 5 events	8874	9512	19810	10734	24279	13377
	3%	3%	5%	3%	3%	4%
grade 6 events	5360	5313	87210	6385	174488	18039
	2%	2%	23%	2%	23%	5%
grade 7 events	221861	212121	181789	216468	178211	238112
	84%	83%	49%	80%	24%	71%

2.2 Compared Parameters

Parameter	Planned	Actual	Parameter	Planned	Actual
Instrument	ACIS	ACIS	Obspar format version number	6	6
Detector	ACIS-235678	ACIS-235678	Obspar file type	PREDICTED	ACTUAL
Grating	NONE	NONE	Obspar update status	NONE	UPDATED
Data mode	FAINT	FAINT	Number of optional ACIS chips dropped	0	0
Observation mode	POINTING	POINTING	On-chip summing requested	N	N
Pointing RA	63.342002	63.3620856409345	Subarray requested	NONE	NONE
Pointing Dec	10.456169	10.43726667215271	Alternating exposures requested	N	N
Pointing Roll	285.620617	285.7736070099608	Primary exposure time	0.000000	3.2
SIM focus pos (mm)	-0.684267	-0.6828225247311905			
SIM defocus (mm)	0	0.001444936568705701			
SIM translation stage pos (mm)	-190.132523	-190.1425803651734			
SIM translation stage offset (mm)	0	0.01005778216563158			
Observation start time	96954373.184000	96953283.00049999			
Observation start date	2001-01-27T03:45:09	2001-01-27T03:28:03			
Observation end time	96997373.184000	96997667.039708			
Observation end date	2001-01-27T15:41:49	2001-01-27T15:47:47			
Read mode	TIMED	TIMED			

2.3 Aspect



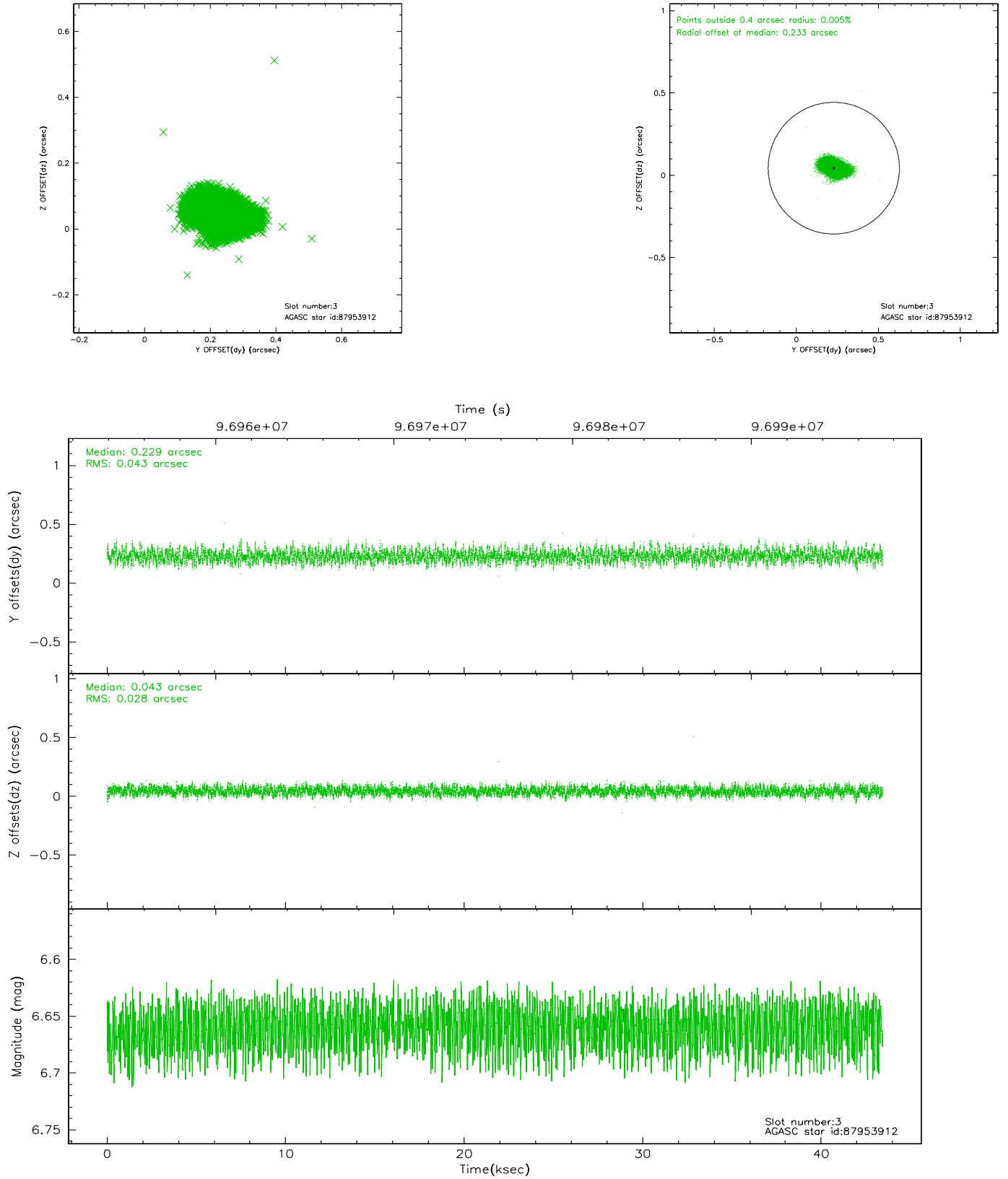


Slot Statistics

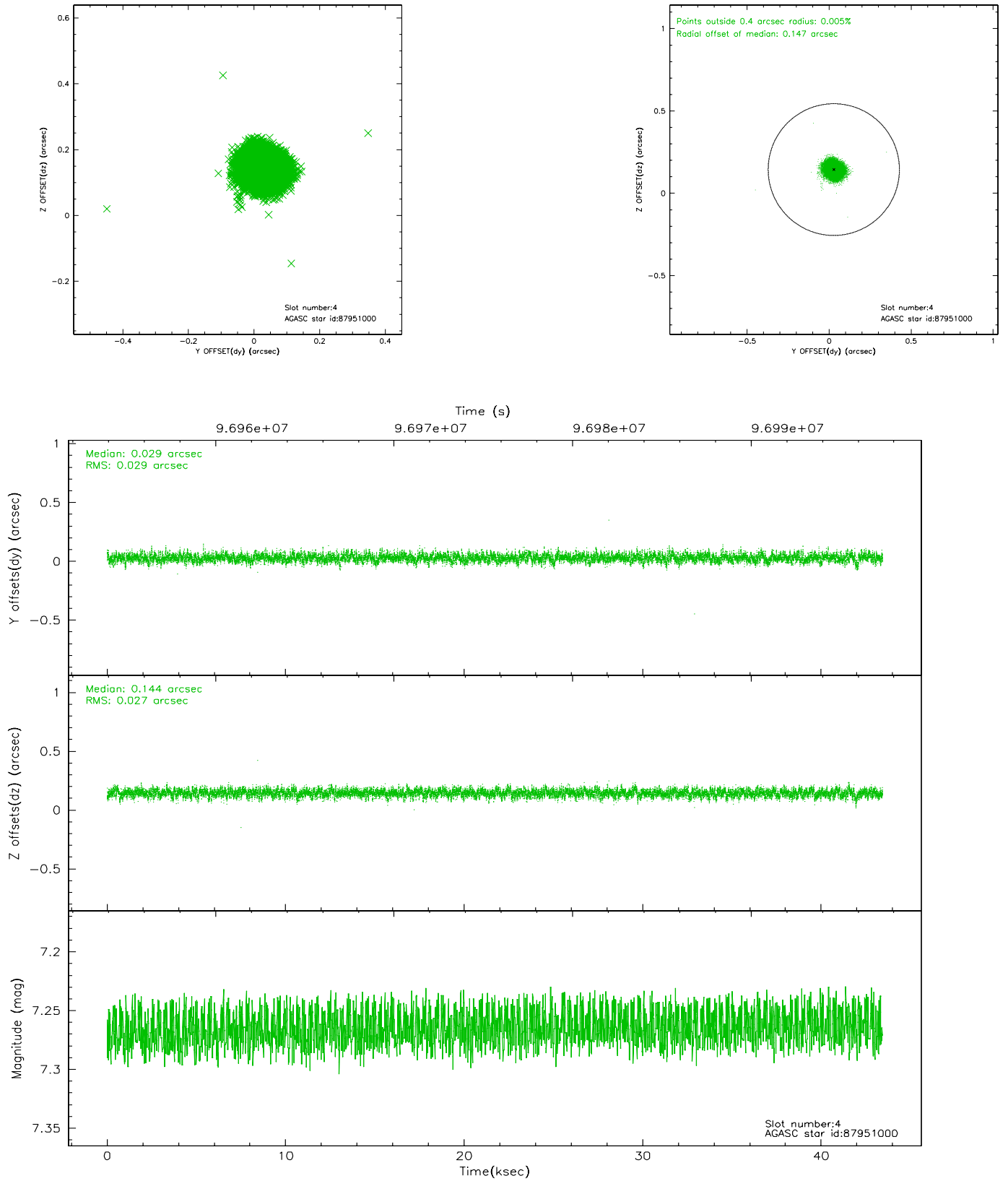
slot	status	id	mag	n_pts	med_dy	med_dz	dr1	dr2	ra	dec	mean_y	mean_z
0	FID	ACIS-S-2	7.12	10597	-0.013	0.032	0.008	0.019	0.000000	0.000000	-755.56	-1726.84
1	FID	ACIS-S-4	7.20	10595	-0.076	-0.002	0.011	0.025	0.000000	0.000000	2157.61	181.66
2	FID	ACIS-S-5	7.24	10596	0.059	-0.021	0.009	0.015	0.000000	0.000000	-1808.37	175.24
3	GUIDE	87953912	6.66	21171	0.229	0.043	0.054	0.090	63.394036	10.212467	894.60	-58.95
4	GUIDE	87951000	7.27	21195	0.029	0.144	0.042	0.067	63.643091	10.701386	-564.13	1263.28
5	GUIDE	87955152	7.66	21194	-0.076	-0.009	0.050	0.080	63.504124	11.027236	-1826.22	1104.87
6	GUIDE	87950304	8.04	21191	0.011	0.016	0.066	0.104	63.753878	10.748130	-621.33	1685.84
7	GUIDE	87818344	8.36	21122	-0.195	-0.199	0.063	0.100	62.599114	10.854229	-2090.71	-2143.57

2.4 Star Slots

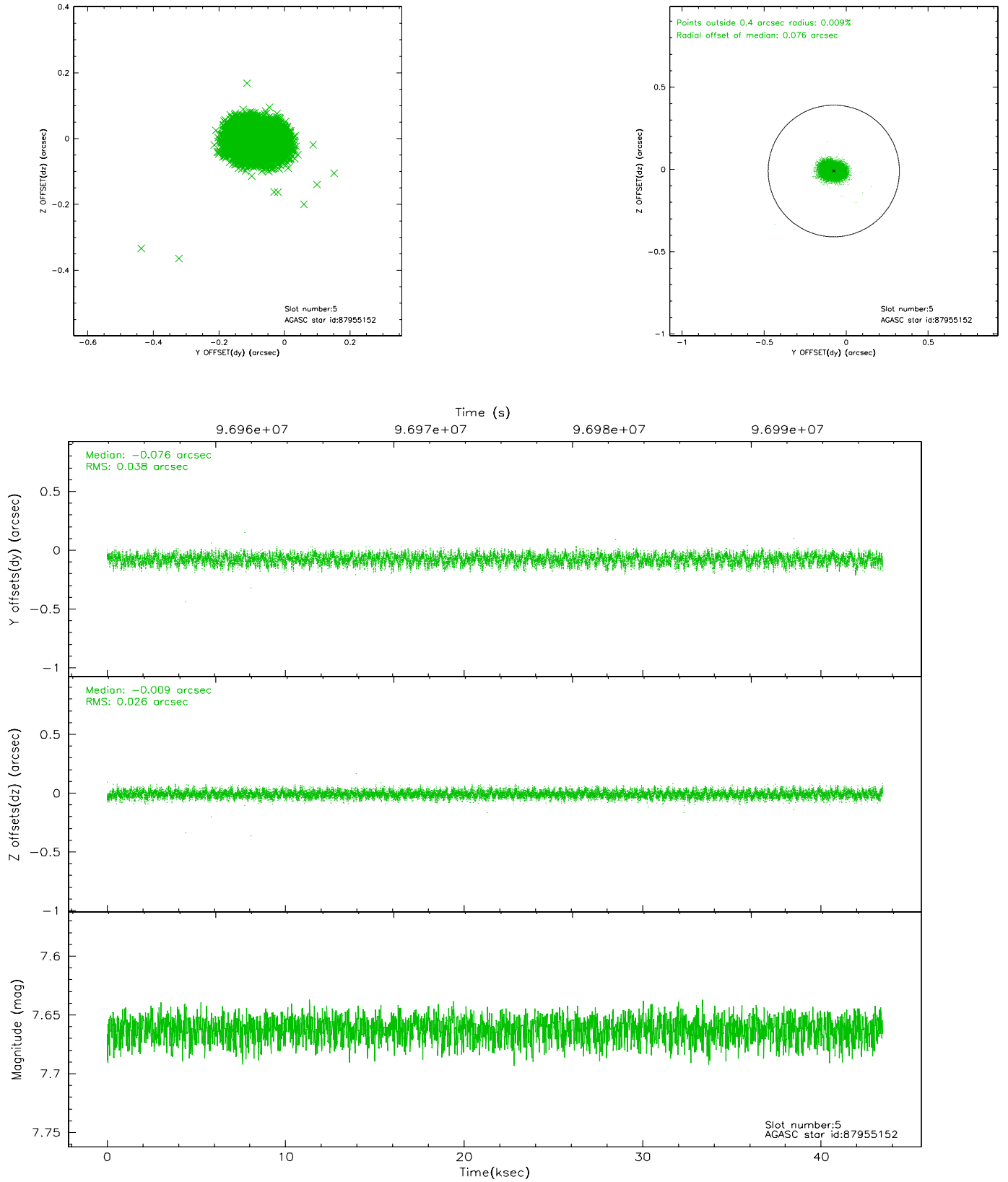
2.4.1 Slot 3



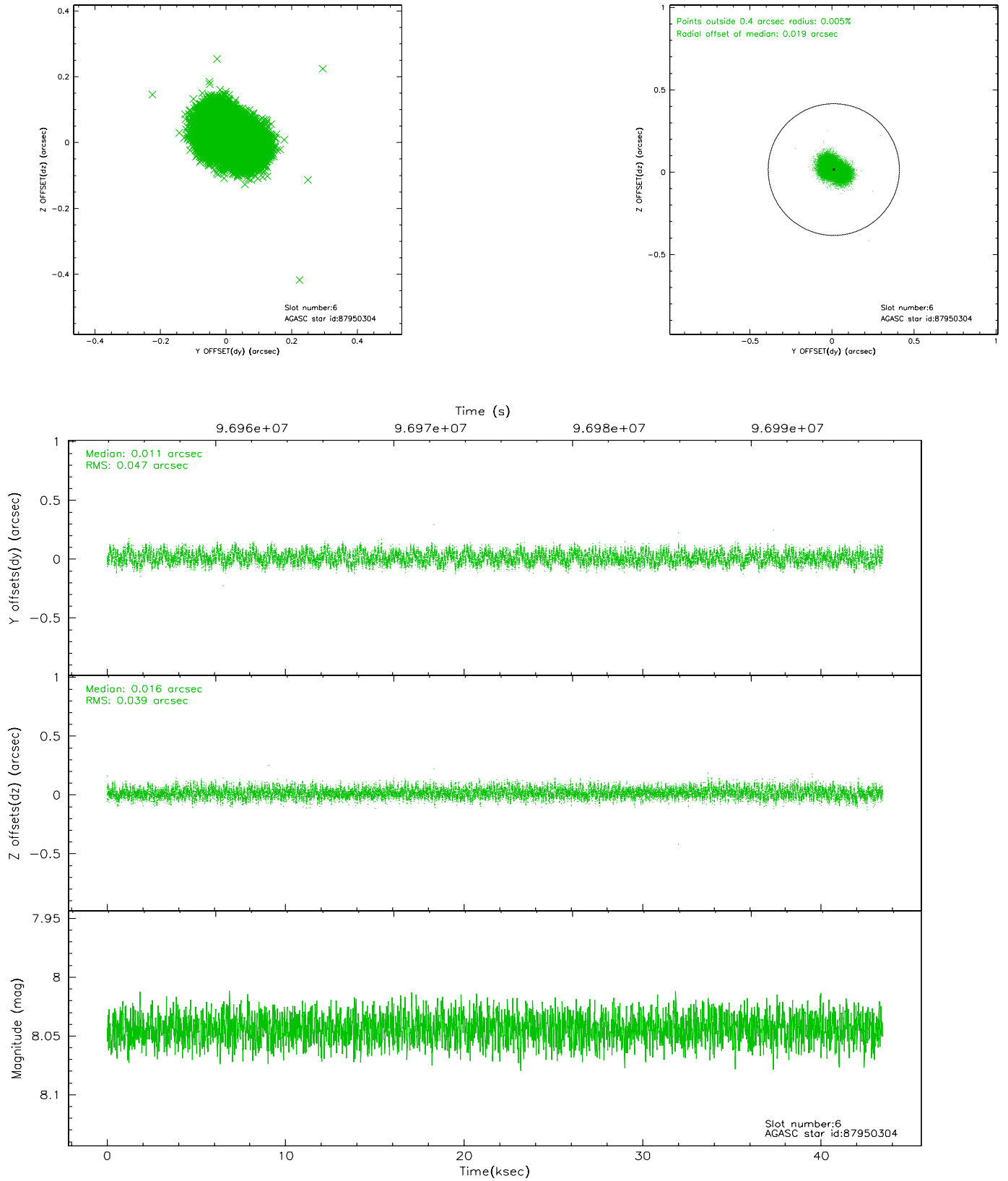
2.4.2 Slot 4



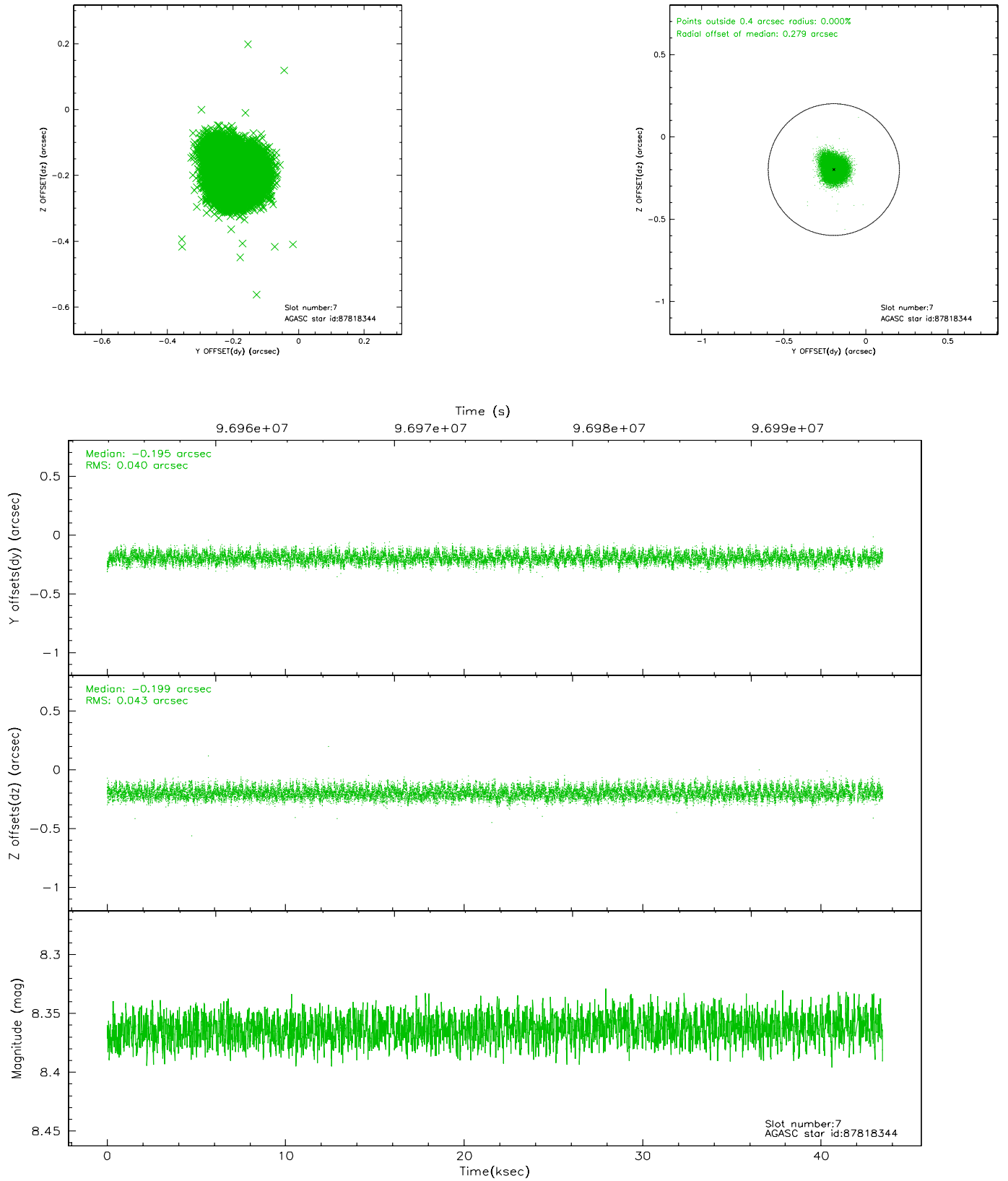
2.4.3 Slot 5



2.4.4 Slot 6

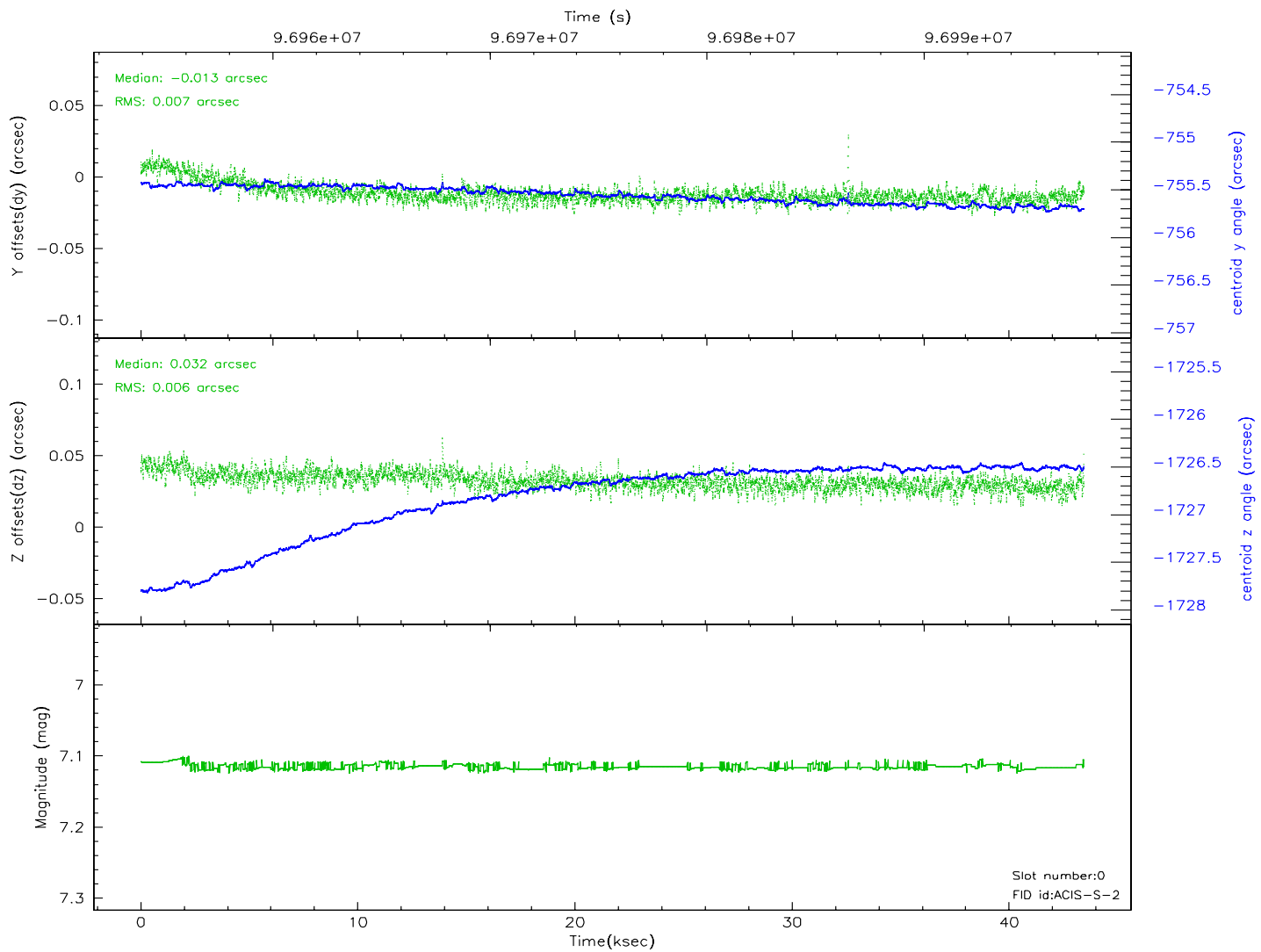
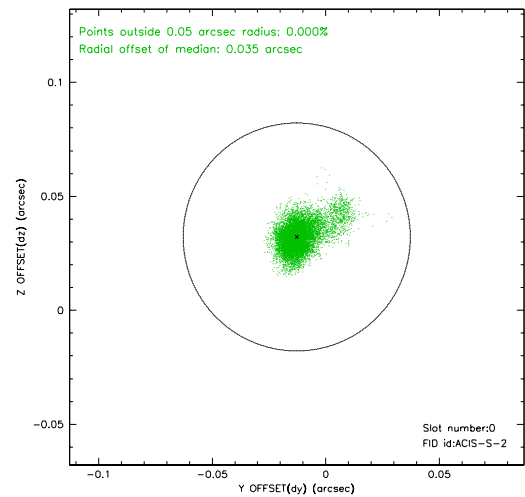
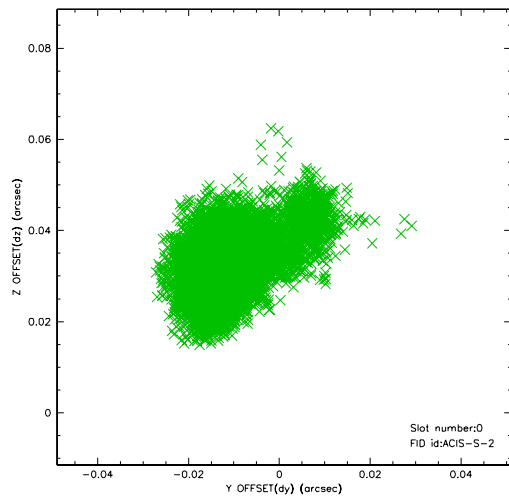


2.4.5 Slot 7

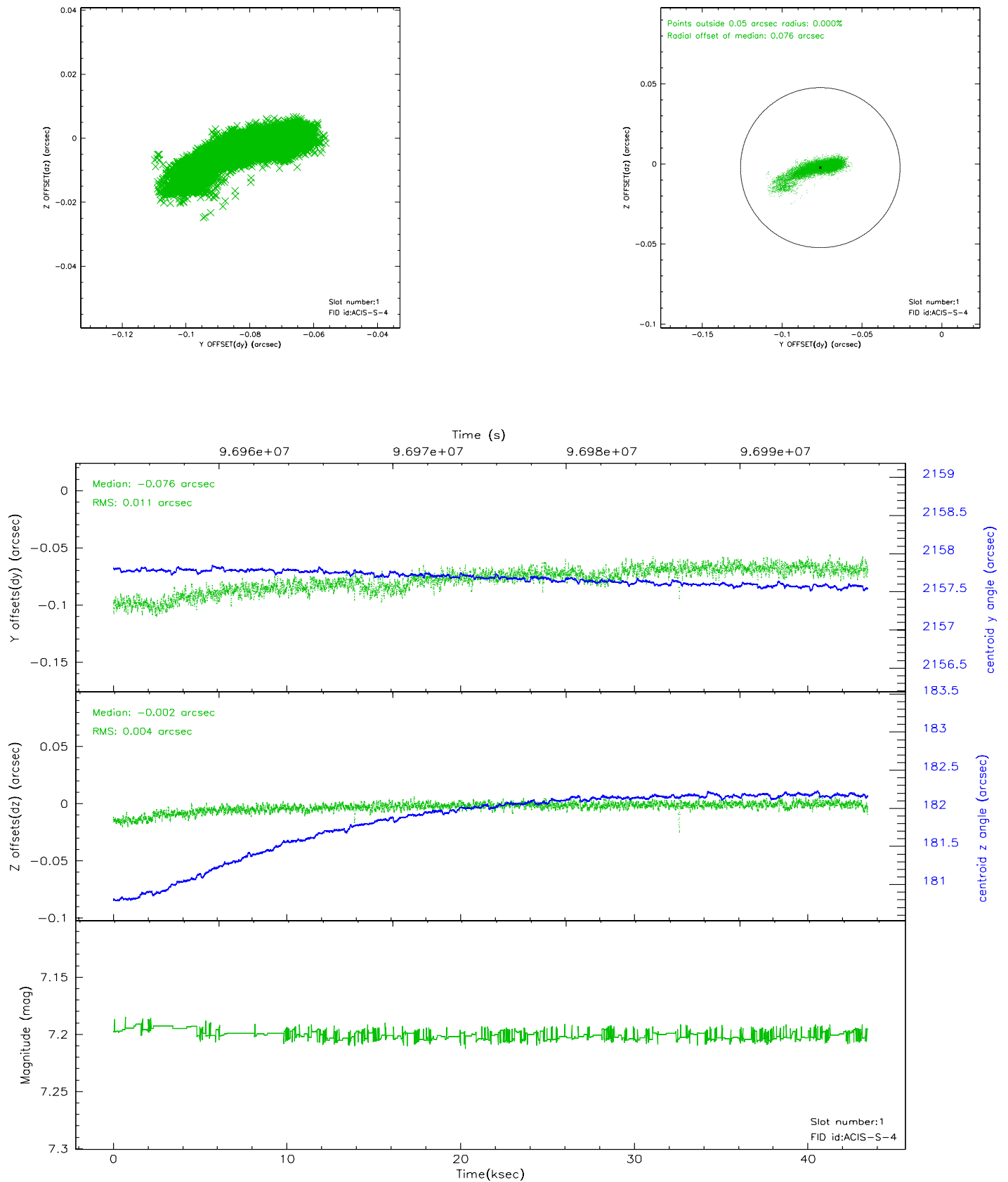


2.5 FID Slots

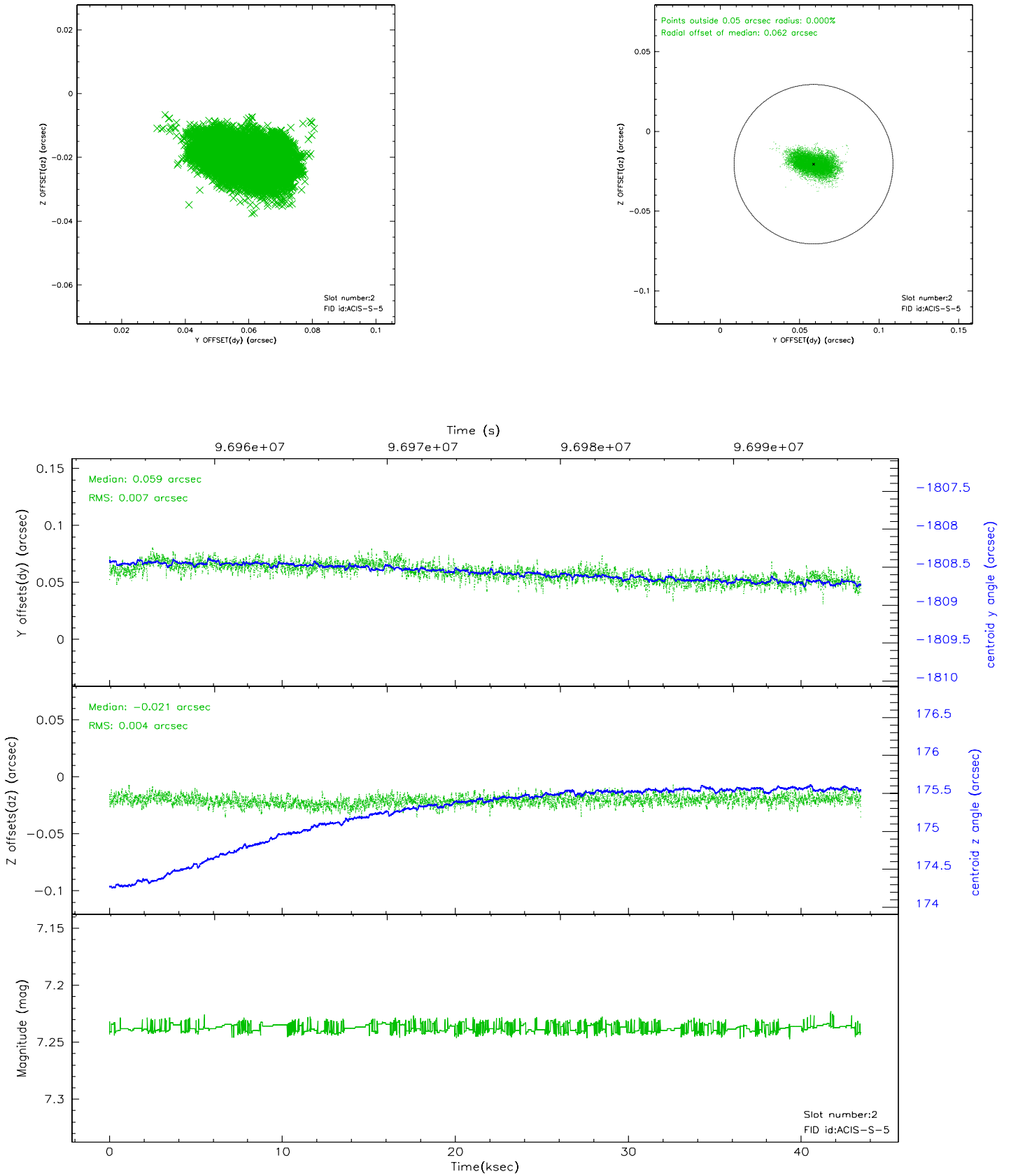
2.5.1 Slot 0



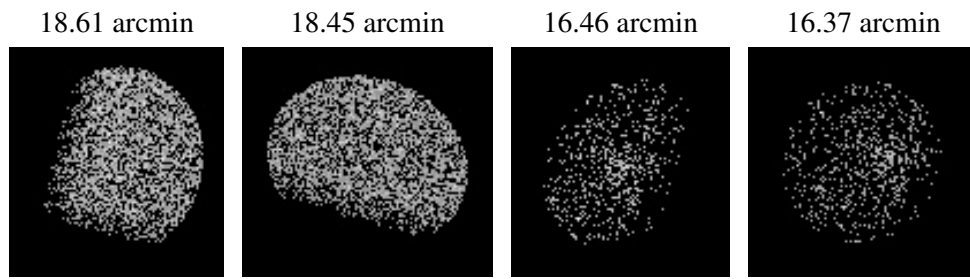
2.5.2 Slot 1



2.5.3 Slot 2



3 Point Sources



A Summary

A.1 Status

V&V Scientist	Jen Lauer
V&V Date (YYYY-MM-DD)	2006.11.06
V&V Edition	1
V&V Disposition and Status	OK
V&V Charge Time	42.94

A.2 Comments