

V&V Reference Report

L2 ASCDS Version : 10.2.4

Observation 16129 - L2 Version 1
Chandra X-Ray Center

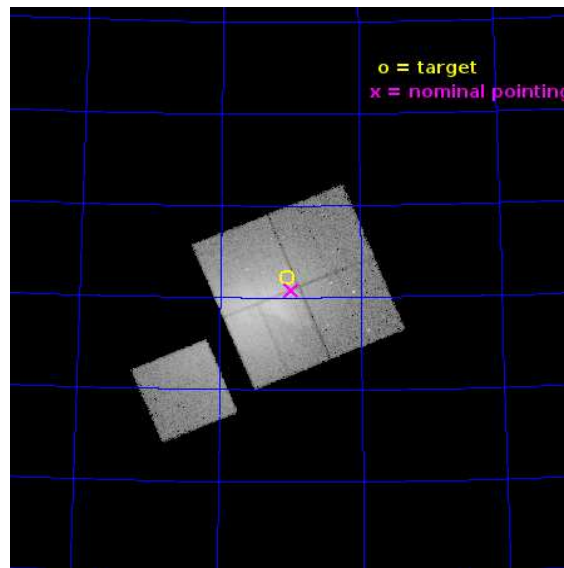
L2 Processing Date : Aug 15 2014

Contents

1	Front	2
2	OBI	3
2.1	OBI	3
2.1.1	Images	3
2.1.2	Bias	3
2.1.3	Parameters	4
2.1.4	Events	4
2.2	Compared Parameters	5
2.3	Aspect	6
2.4	Star Slots	9
2.4.1	Slot 3	9
2.4.2	Slot 4	10
2.4.3	Slot 5	11
2.4.4	Slot 6	12
2.4.5	Slot 7	13
2.5	FID Slots	14
2.5.1	Slot 0	14
2.5.2	Slot 1	15
2.5.3	Slot 2	16
A	Summary	17
A.1	Status	17
A.2	Comments	17

1 Front

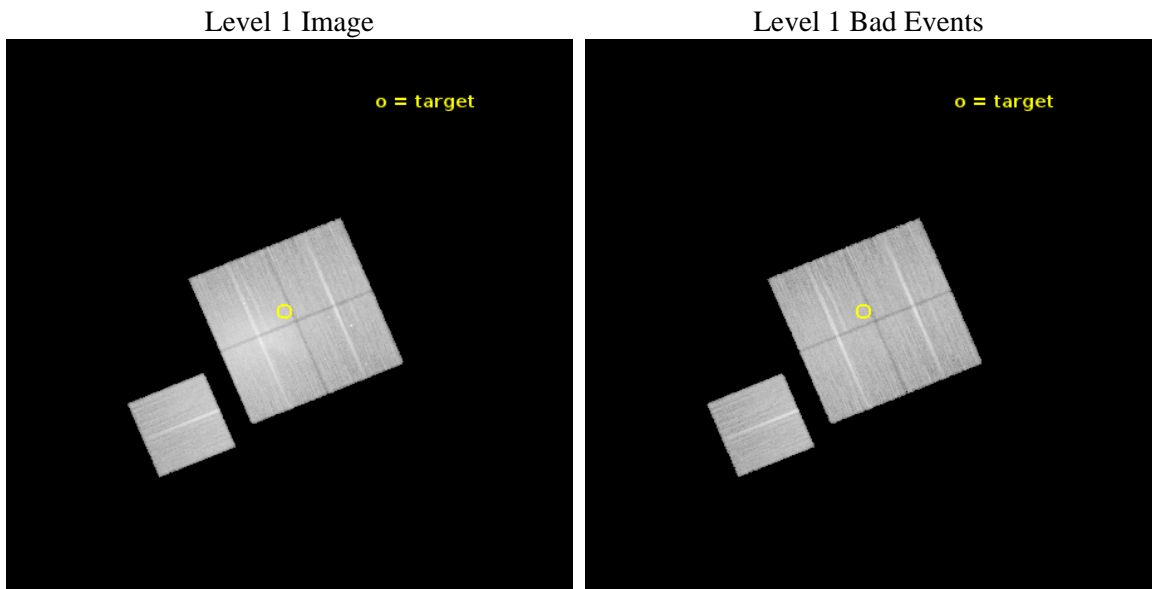
seq_num	801383	Sequence number
obs_id	16129	Observation id
title	Abell 2256: New paradigms for thermal/relativistic interactions?	P
observer	Dr. LAWRENCE RUDNICK	Principal investigator
object	Abell 2256	Source name
dtcycle	0	
cycle	P	events from which exps? Prim/Second/Both
ra_targ	255.654129	Observer's specified target RA [deg]
dec_targ	78.703839	Observer's specified target Dec [deg]
ra_nom	255.61721048427	Nominal RA [deg]
dec_nom	78.680343235894	Nominal Dec [deg]
roll_nom	247.34489570788	Nominal Roll [deg]
revision	1	Processing version of data
ontime	45078.828149736	Sum of GTIs [s]
livetime	44489.840073409	Livetime [s]
ontime0	45078.705029786	Sum of GTIs [s]
ontime1	45081.887060046	Sum of GTIs [s]
ontime2	45081.928080142	Sum of GTIs [s]
ontime3	45078.828149736	Sum of GTIs [s]
ontime6	45084.945950389	Sum of GTIs [s]
l2events	293800	Number of level 2 events



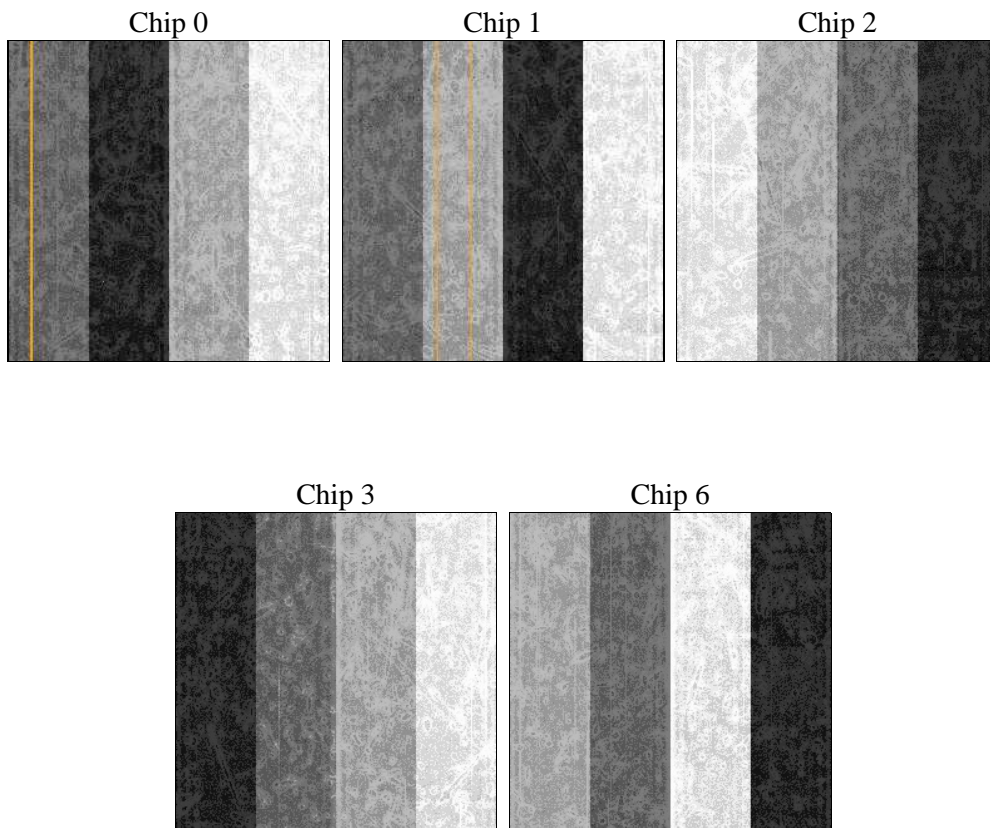
2 OBI

2.1 OBI

2.1.1 Images



2.1.2 Bias



2.1.3 Parameters

obi_num	0	Obi number	sched_exp_time	45000.000000	[s] Scheduled observation exposure time
ascdsver	10.2.4	Processing system revision	ontime	45078.828149736	Sum of GTIs [s]
caldbver	4.6.2	 	ontime0	45078.705029786	Sum of GTIs [s]
date	2014-08-15T19:48:03	Date and time of file creation	ontime1	45081.887060046	Sum of GTIs [s]
revision	1	Processing version of data	ontime2	45081.928080142	Sum of GTIs [s]
			ontime3	45078.828149736	Sum of GTIs [s]
			ontime6	45084.945950389	Sum of GTIs [s]
			l1events	1187481	Number of level 1 events

2.1.4 Events

	ccd 0	ccd 1	ccd 2	ccd 3	ccd 6		ccd 0	ccd 1	ccd 2	ccd 3	ccd 6
level 1 events	201816	198682	306981	263519	216483	grade 0 events	19344	17102	86257	63866	21128
rejected events	164302	162837	187533	171835	176115		9%	8%	28%	24%	9%
rejected %	81%	81%	61%	65%	81%	grade 1 events	151	147	476	362	142
							0%	0%	0%	0%	0%
						grade 2 events	7738	7189	15522	12260	7263
							3%	3%	5%	4%	3%
						grade 3 events	2827	3051	5399	4587	3074
							1%	1%	1%	1%	1%
						grade 4 events	2656	2876	5324	4557	2999
							1%	1%	1%	1%	1%
						grade 5 events	8282	9013	8100	9879	9423
							4%	4%	2%	3%	4%
						grade 6 events	4951	5629	6956	6421	5905
							2%	2%	2%	2%	2%
						grade 7 events	155867	153675	178947	161587	166549
							77%	77%	58%	61%	76%

2.2 Compared Parameters

Parameter	Planned	Actual	Parameter	Planned	Actual
Instrument	ACIS	ACIS	Obspar format version number	7	7
Detector	ACIS-01236	ACIS-01236	Obspar file type	PREDICTED	ACTUAL
Grating	NONE	NONE	Obspar update status	NONE	UPDATED
Data mode	VFAINT	VFAINT	Number of optional ACIS chips dropped	0	0
Observation mode	POINTING	POINTING	On-chip summing requested	N	N
[deg] Pointing RA	255.598688	255.6172104842695	Subarray requested	NONE	NONE
[deg] Pointing Dec	78.707696	78.6803432358939	Alternating exposures requested	N	N
[deg] Pointing Roll	247.154365	247.3448957078758	[s] Primary exposure time	0.000000	3.1
[mm] SIM focus pos	-0.782348	-0.7809083437167272			
[mm] SIM defocus	0	0.001439871863259334			
[mm] SIM translation stage pos	-233.592463	-233.5874344608287			
[mm] SIM translation stage offset	0	-0.005018542100998502			
[s] Observation start time (MET)	524438355.184000	524437108.44604			
Observation start date	2014-08-14T21:18:08	2014-08-14T20:58:28			
[s] Observation end time (MET)	524483355.184000	524483886.88614			
Observation end date	2014-08-15T09:48:08	2014-08-15T09:58:06			
Read mode	TIMED	TIMED			

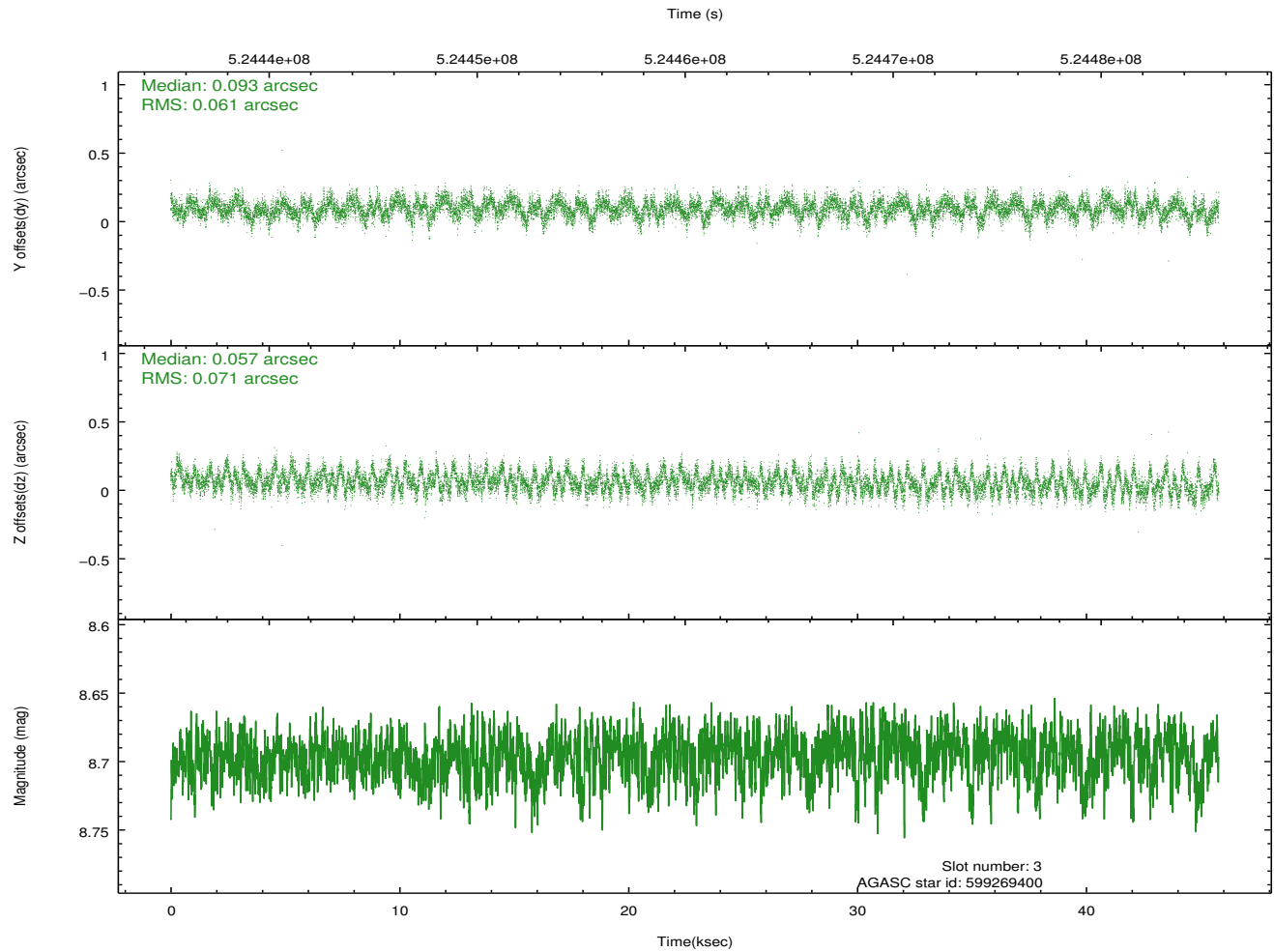
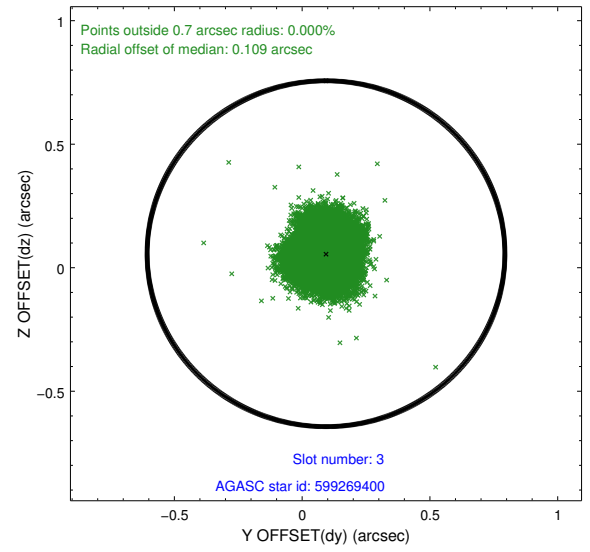
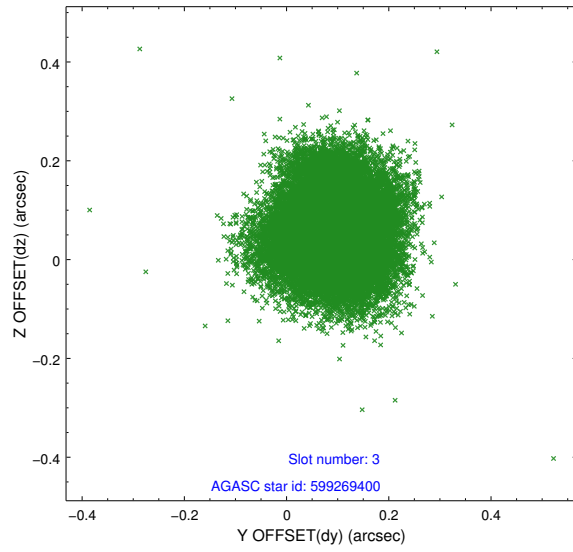
2.3 Aspect

Slot Statistics

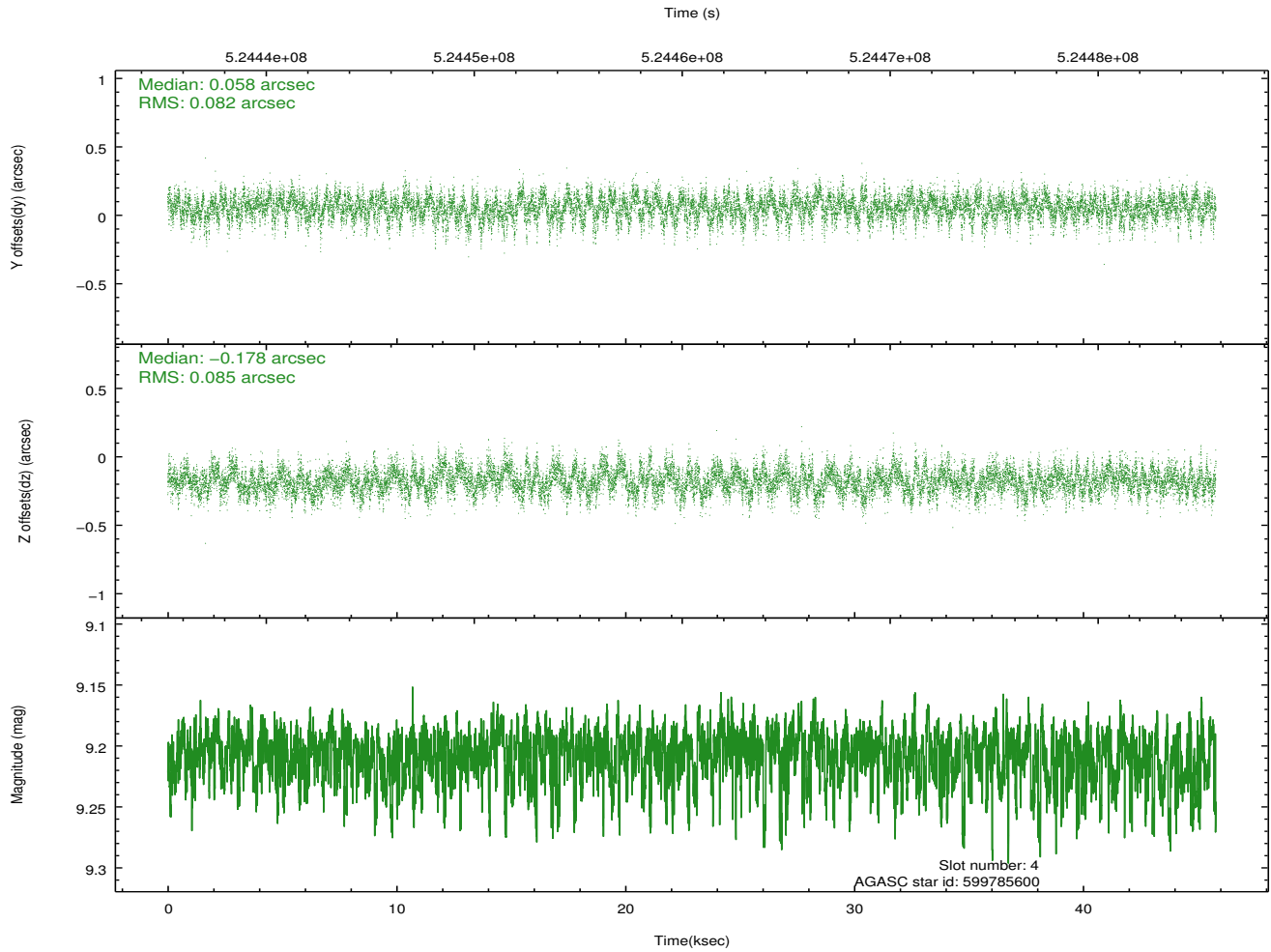
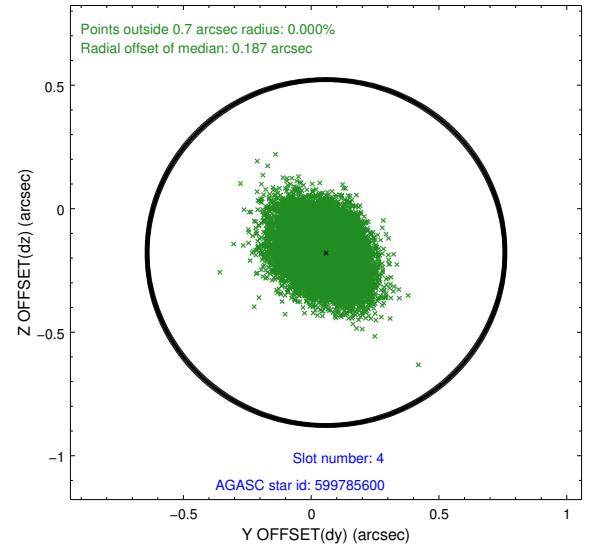
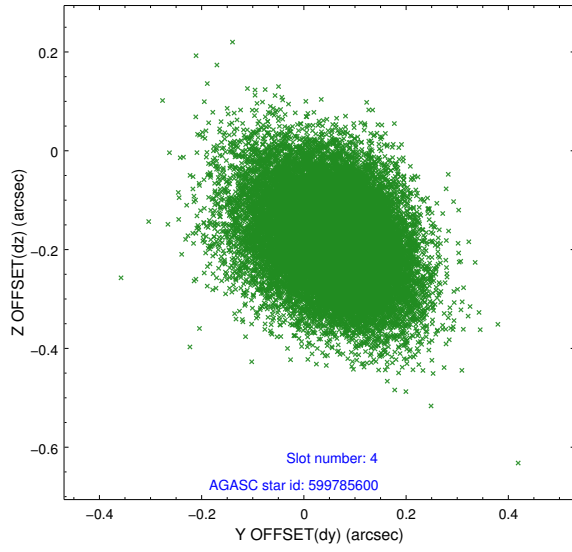
slot	status	id	mag	n_pts	med_dy	med_dz	dr1	dr2	ra	dec	mean_y	mean_z
0	FID	ACIS-I-1	7.05	11172	0.061	0.016	0.050	0.064	0.000000	0.000000	913.97	-846.05
1	FID	ACIS-I-5	7.04	11172	-0.276	0.052	0.019	0.031	0.000000	0.000000	-1834.53	1051.40
2	FID	ACIS-I-6	7.05	11172	0.127	-0.001	0.032	0.059	0.000000	0.000000	379.52	1695.92
3	GUIDE	599269400	8.70	22336	0.093	0.057	0.101	0.158	254.398050	78.499006	1019.27	-505.29
4	GUIDE	599785600	9.21	22331	0.058	-0.178	0.124	0.207	259.639486	78.927525	-1903.13	2226.93
5	GUIDE	599789480	8.84	22339	0.108	0.117	0.121	0.194	253.845424	78.947438	-342.09	-1456.80
6	GUIDE	599790040	9.04	22328	-0.283	0.220	0.125	0.198	252.479590	78.878159	222.19	-2255.28
7	GUIDE	599790632	7.96	22340	0.027	-0.213	0.068	0.109	257.096793	78.828804	-819.55	788.23

2.4 Star Slots

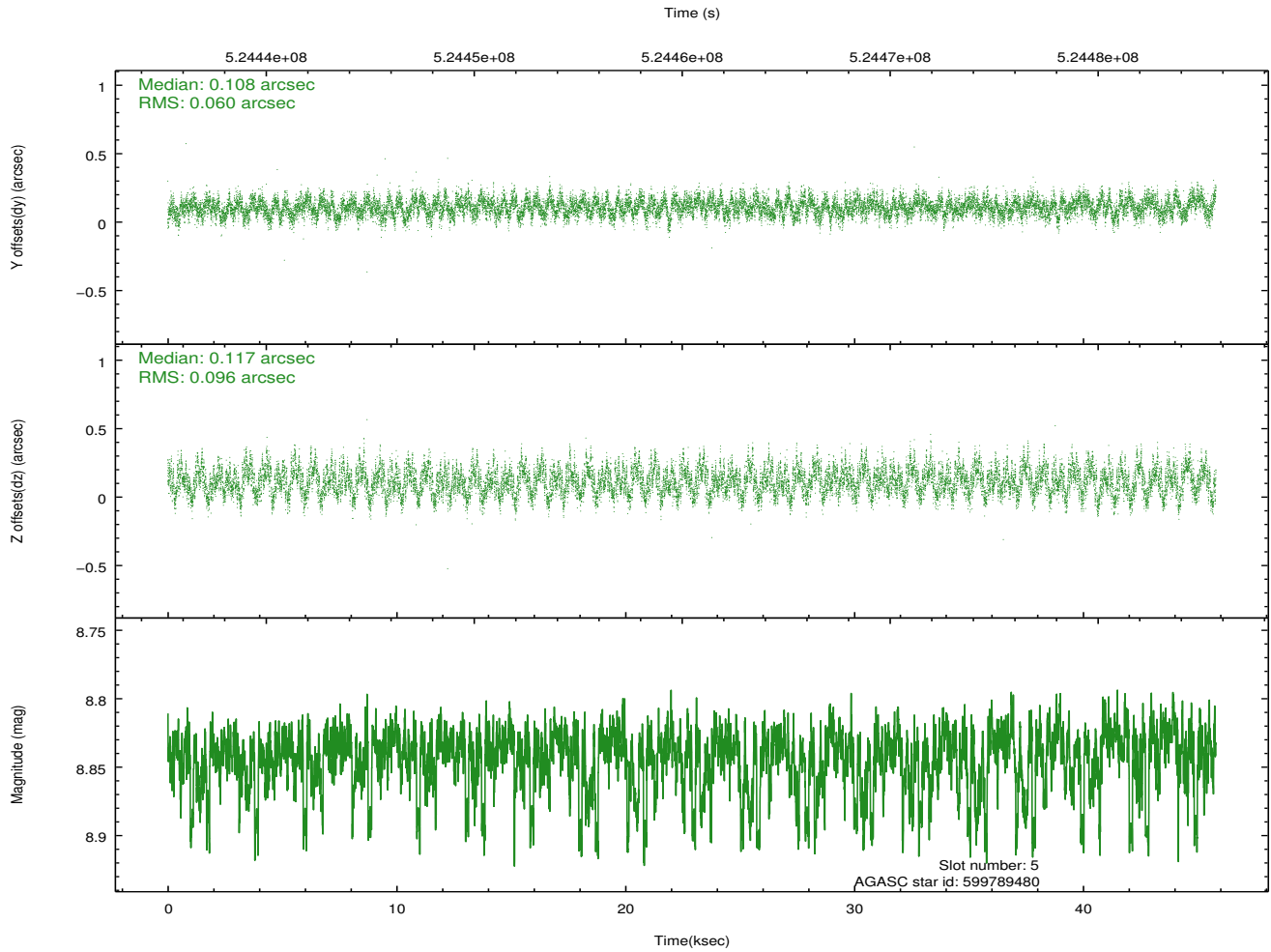
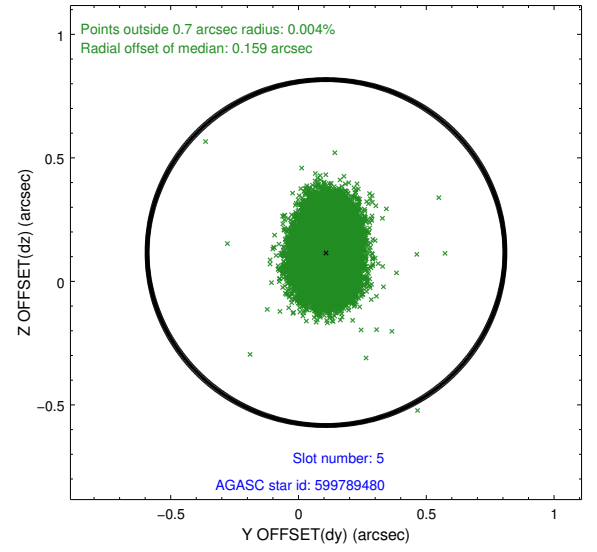
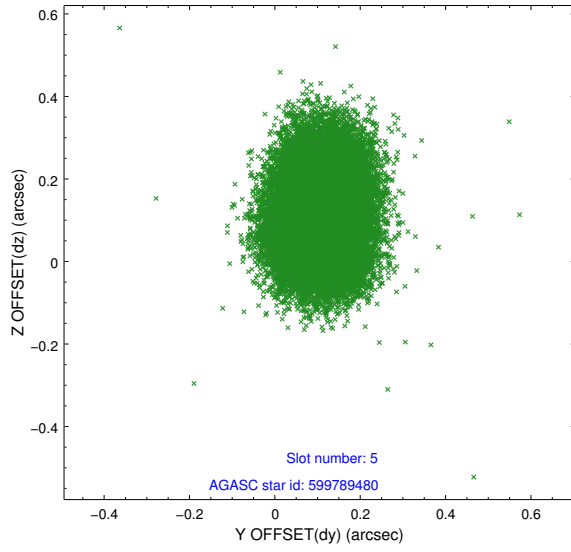
2.4.1 Slot 3



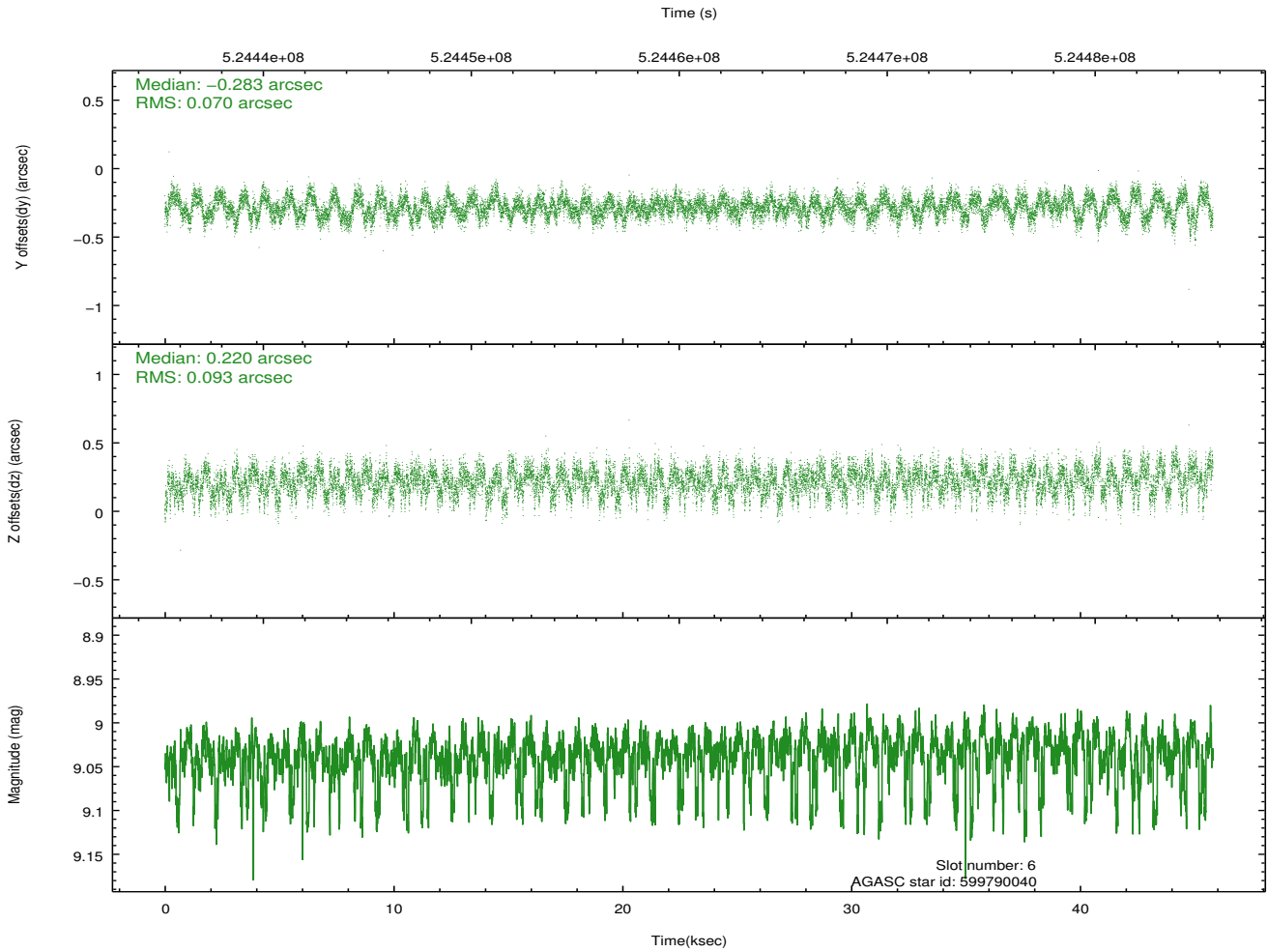
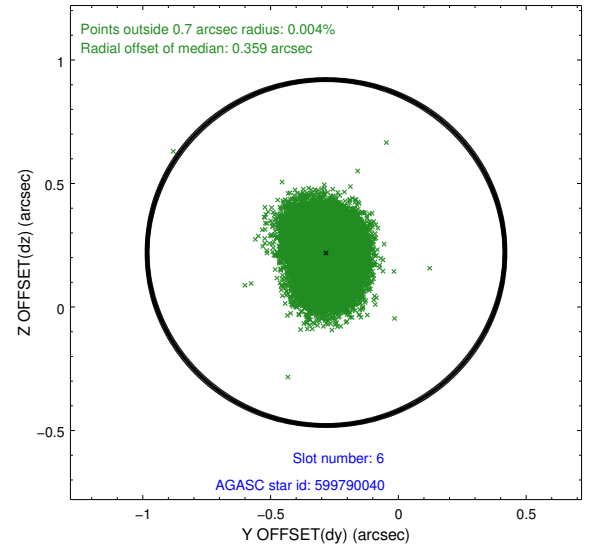
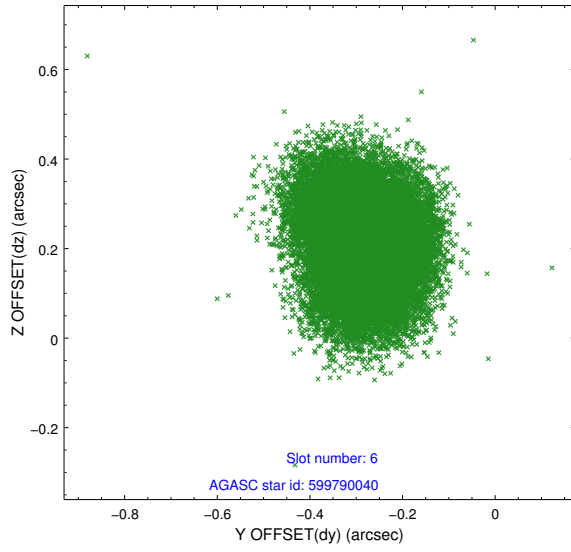
2.4.2 Slot 4



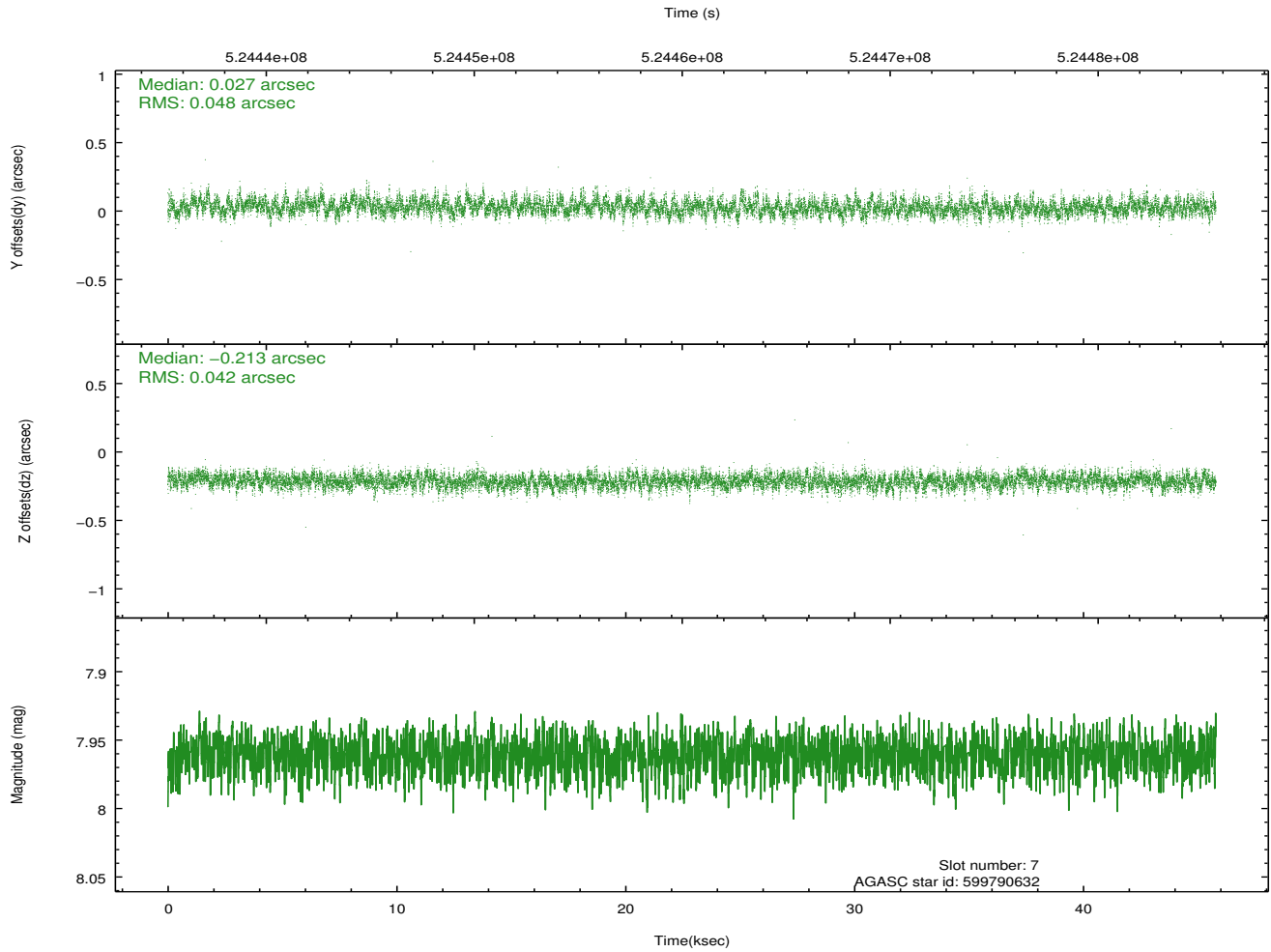
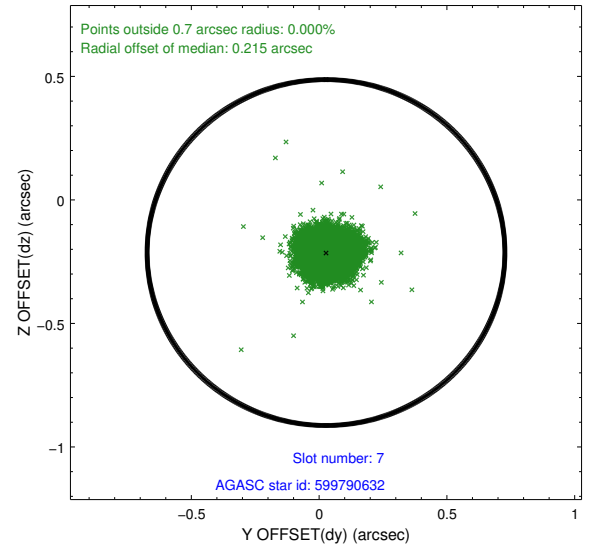
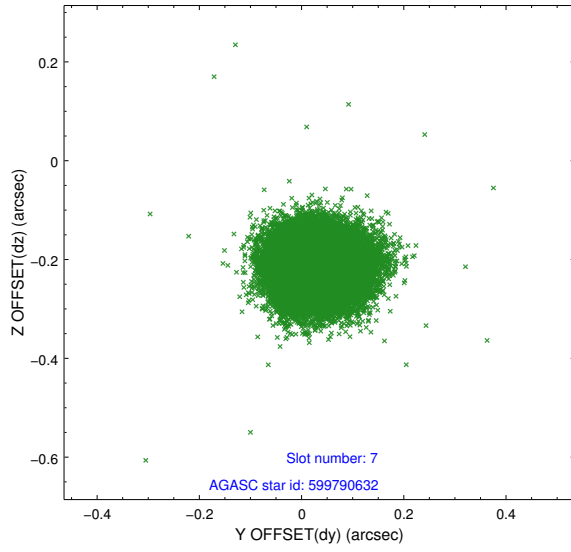
2.4.3 Slot 5



2.4.4 Slot 6

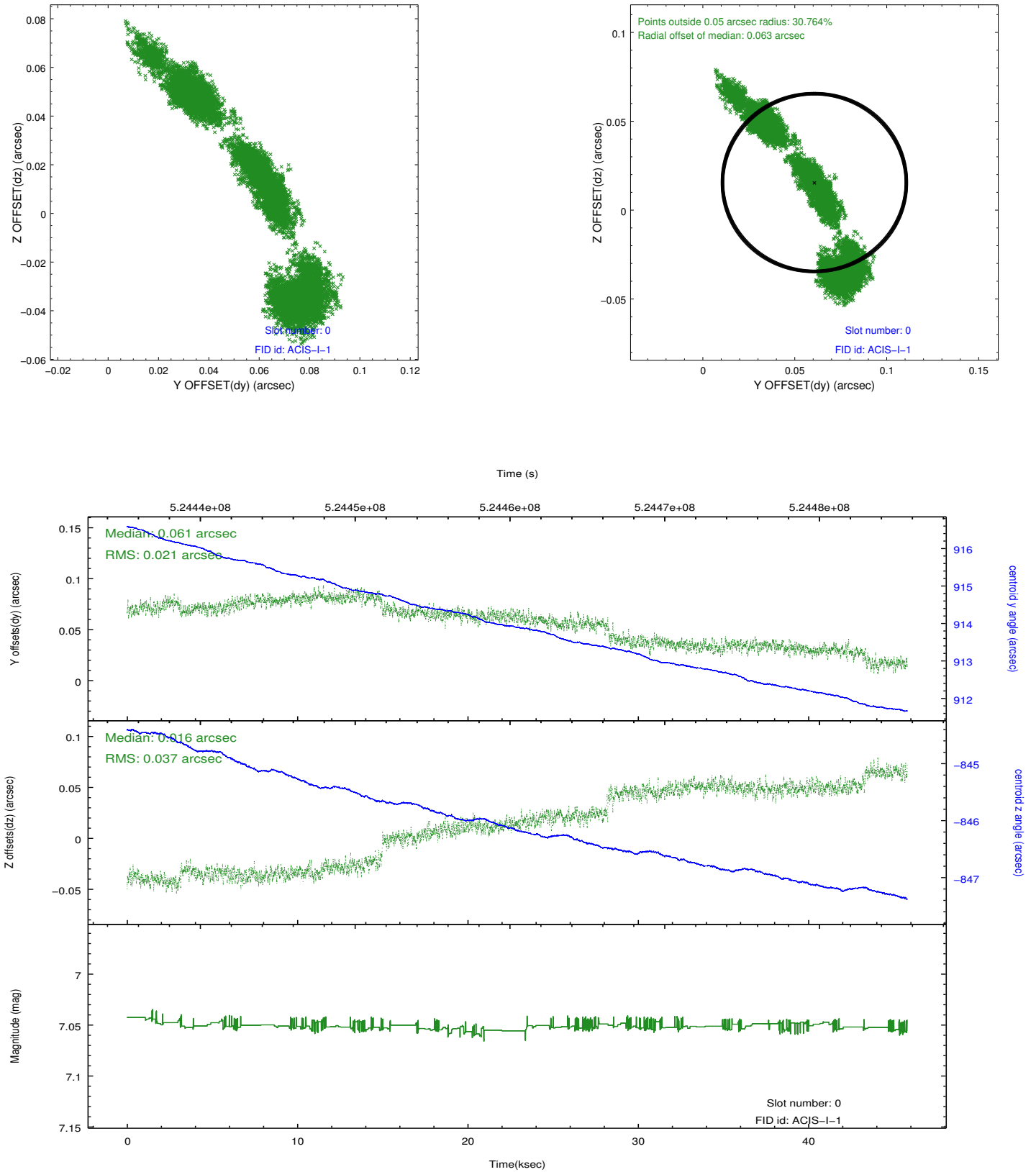


2.4.5 Slot 7

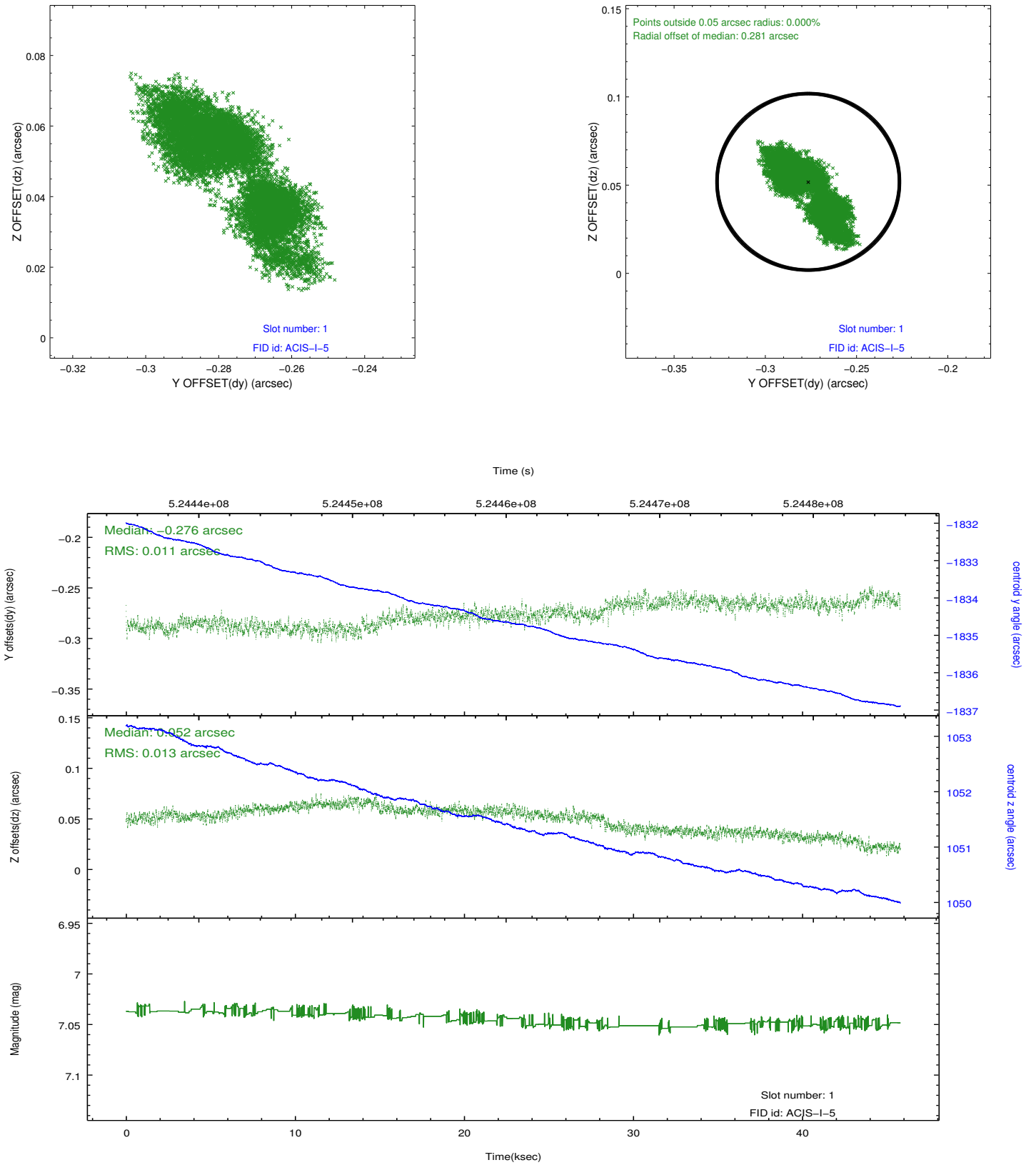


2.5 FID Slots

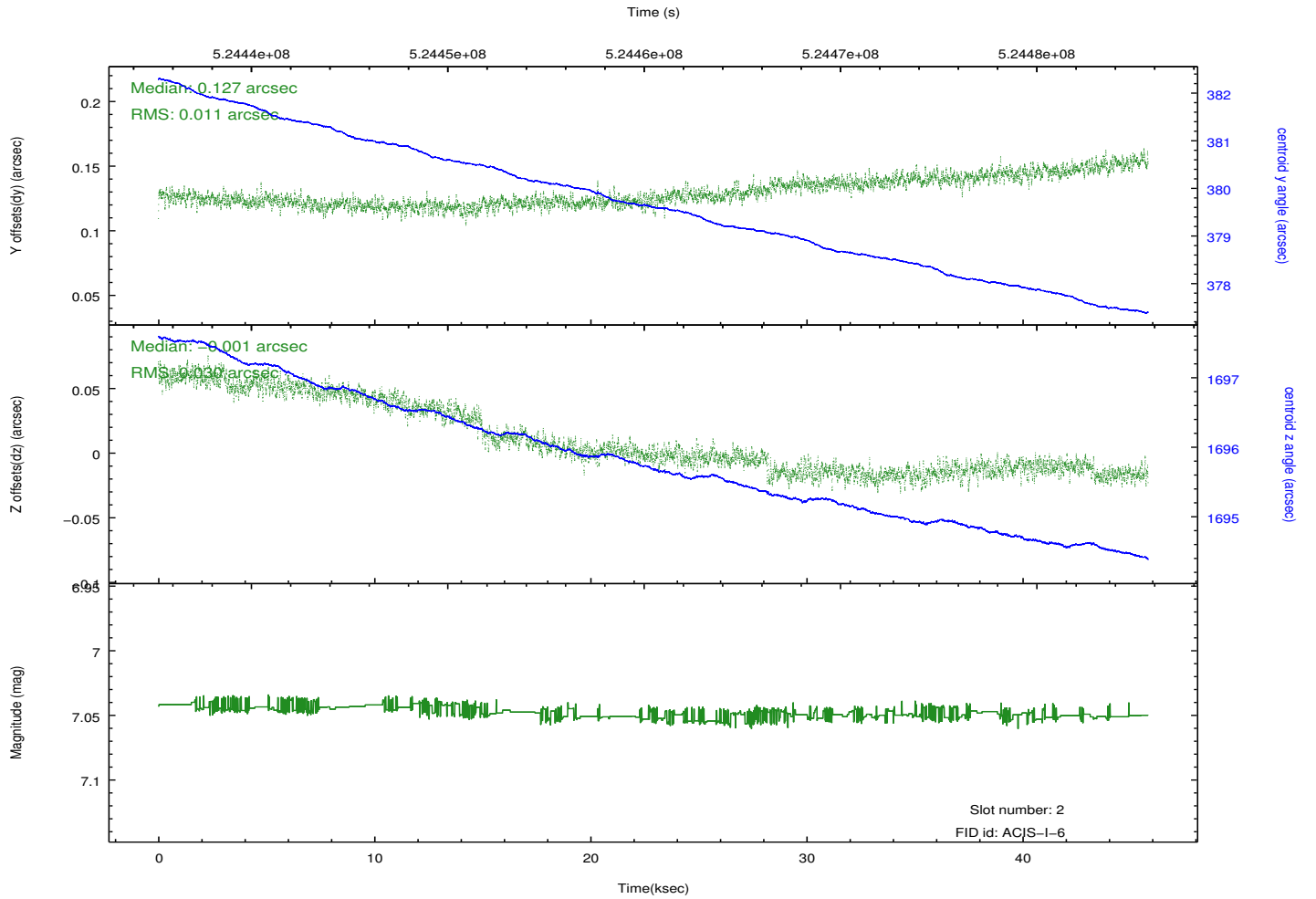
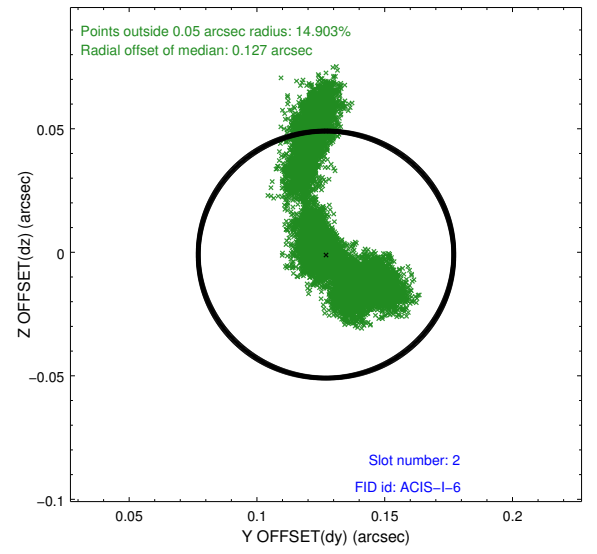
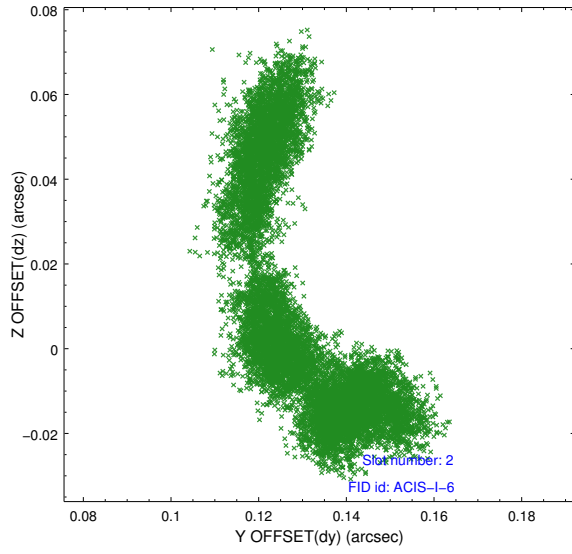
2.5.1 Slot 0



2.5.2 Slot 1



2.5.3 Slot 2



A Summary

A.1 Status

V&V Scientist	Beth Sundheim
V&V Date (YYYY-MM-DD)	2014.08.15
V&V Edition	1
V&V Disposition and Status	OK
V&V Charge Time	45.078828149736

A.2 Comments