

# V&V Reference Report

## L2 ASCDS Version : 8.4.3

Observation 14339 - L2 Version 2  
Chandra X-Ray Center

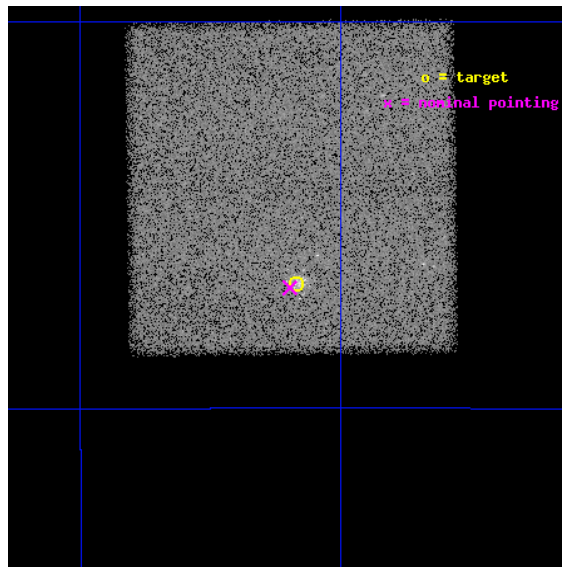
L2 Processing Date : Feb 22 2012

## Contents

<b>1</b>	<b>Front</b>	<b>2</b>
<b>2</b>	<b>OBI</b>	<b>3</b>
2.1	OBI . . . . .	3
2.1.1	Images . . . . .	3
2.1.2	Bias . . . . .	3
2.1.3	Parameters . . . . .	4
2.1.4	Events . . . . .	4
2.2	Compared Parameters . . . . .	5
2.3	Aspect . . . . .	6
2.4	Star Slots . . . . .	9
2.4.1	Slot 3 . . . . .	9
2.4.2	Slot 4 . . . . .	10
2.4.3	Slot 5 . . . . .	11
2.4.4	Slot 6 . . . . .	12
2.4.5	Slot 7 . . . . .	13
2.5	FID Slots . . . . .	14
2.5.1	Slot 0 . . . . .	14
2.5.2	Slot 1 . . . . .	15
2.5.3	Slot 2 . . . . .	16
<b>A</b>	<b>Summary</b>	<b>17</b>
A.1	Status . . . . .	17
A.2	Comments . . . . .	17

# 1 Front

seq_num	401391	Sequence number
obs_id	14339	Observation id
title	Quiescent monitoring of the 11 Hz pulsar in Terzan 5	Proposal titl
observer	Nathalie Degenaar	Principal investigator
object	Terzan 5	Source name
dtcycle	0	&#160
cycle	P	events from which exps? Prim/Second/Both
ra_targ	267.021667	Observer's specified target RA [deg]
dec_targ	-24.779806	Observer's specified target Dec [deg]
ra_nom	267.02445614682	Nominal RA [deg]
dec_nom	-24.781470964199	Nominal Dec [deg]
roll_nom	269.3077982356	Nominal Roll [deg]
revision	2	Processing version of data
ontime	34529.013915241	Sum of GTIs [s]
livetime	34063.031642373	Livetime [s]
ontime7	34529.013915241	Sum of GTIs [s]
l2events	130830	Number of level 2 events

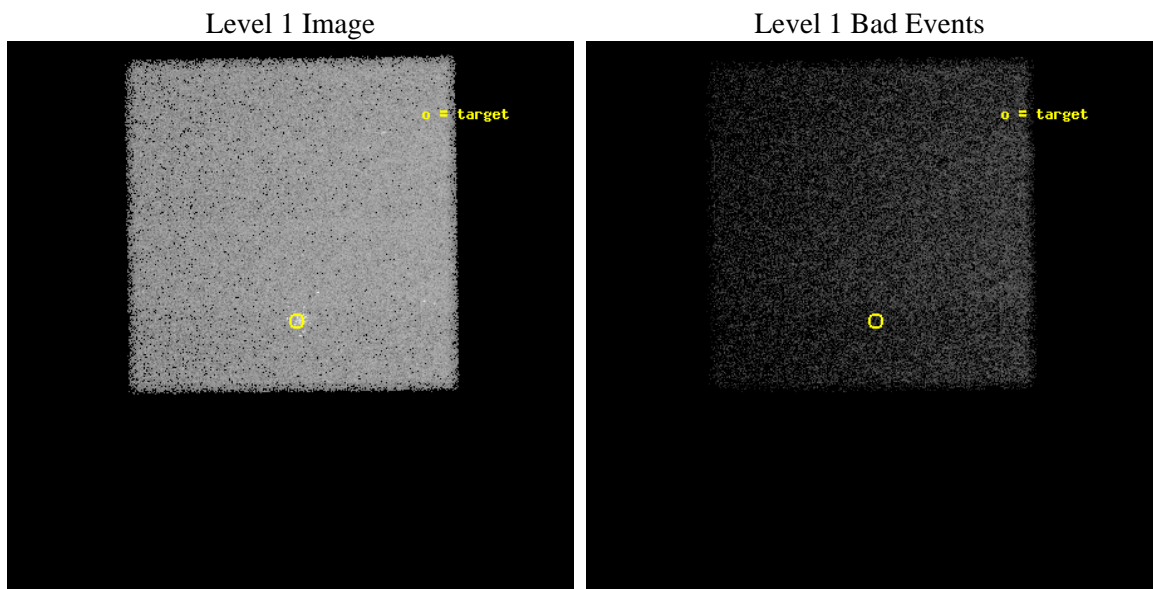




## 2 OBI

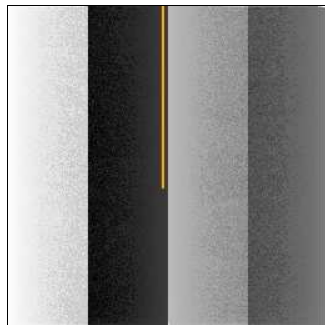
### 2.1 OBI

#### 2.1.1 Images



#### 2.1.2 Bias

Chip 7



### 2.1.3 Parameters

obi_num	0	Obi number	sched_exp_time	34450.000000	[s] Scheduled observation exposure time
ascdsver	8.4.3	Processing system revision	ontime	34529.013915241	Sum of GTIs [s]
caldsver	4.4.8	&#160	ontime7	34529.013915241	Sum of GTIs [s]
date	2012-02-22T08:09:59	Date and time of file creation	l1events	288608	Number of level 1 events
revision	2	Processing version of data			

### 2.1.4 Events

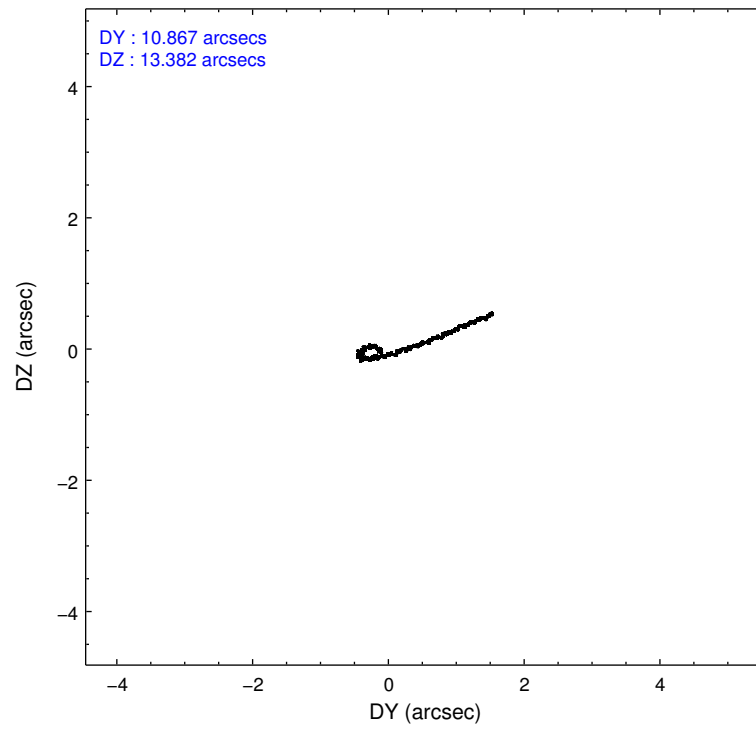
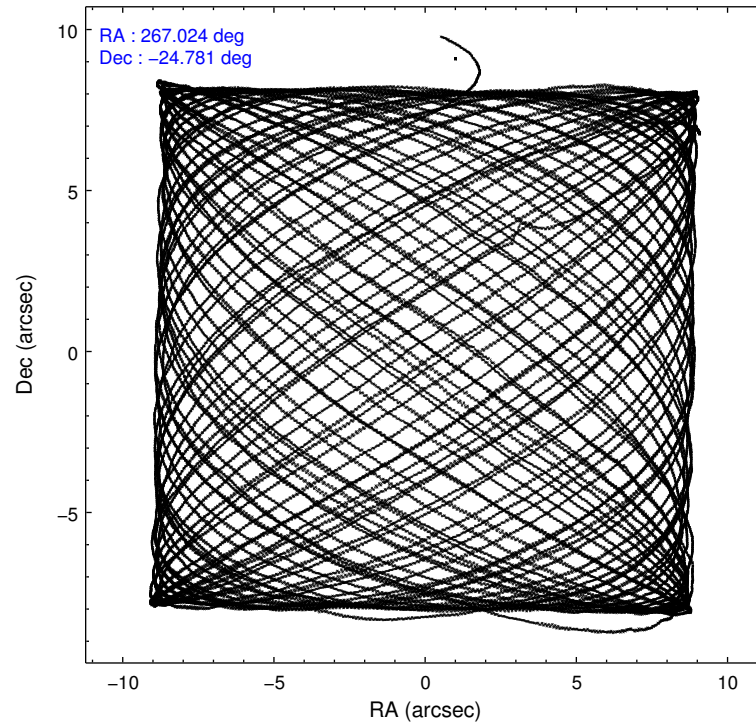
	<b>ccd 7</b>
level 1 events	288608
rejected events	154387
rejected %	53%

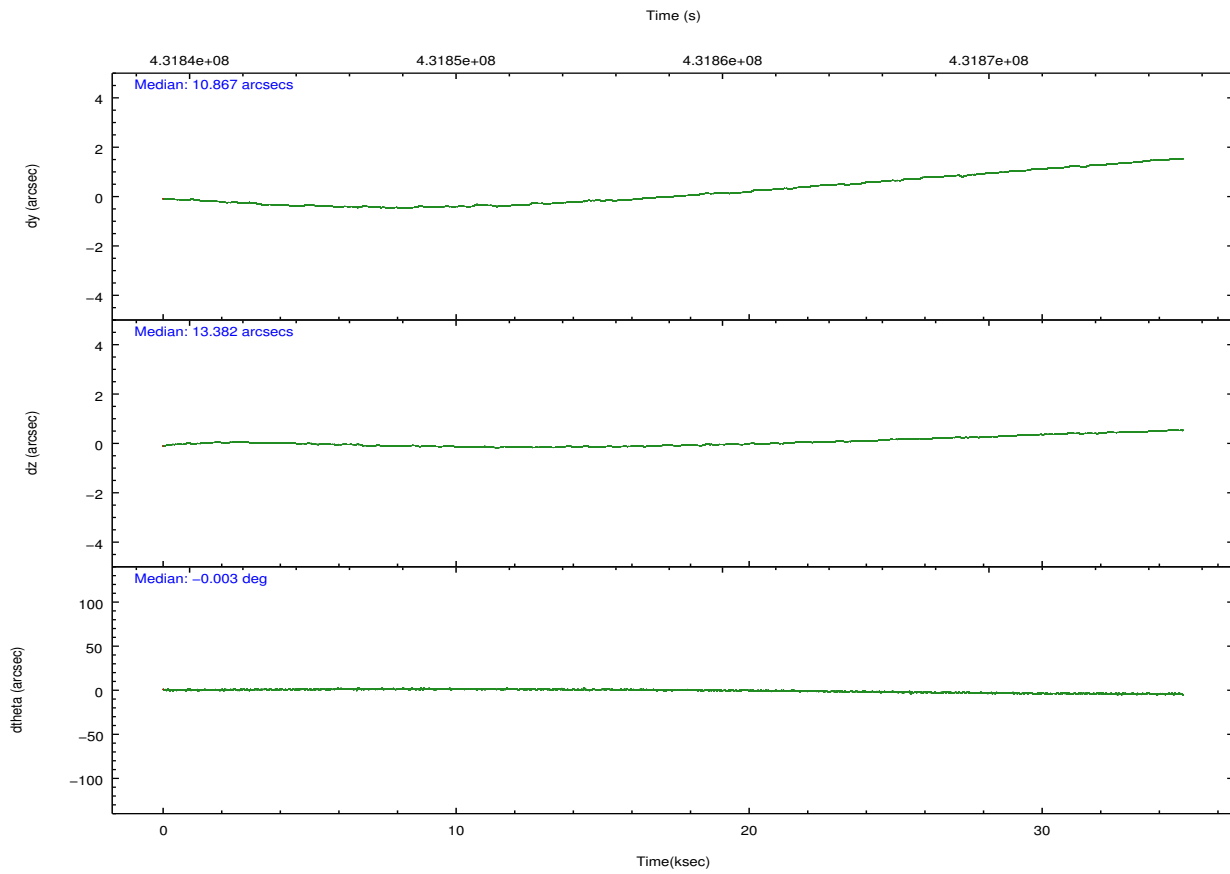
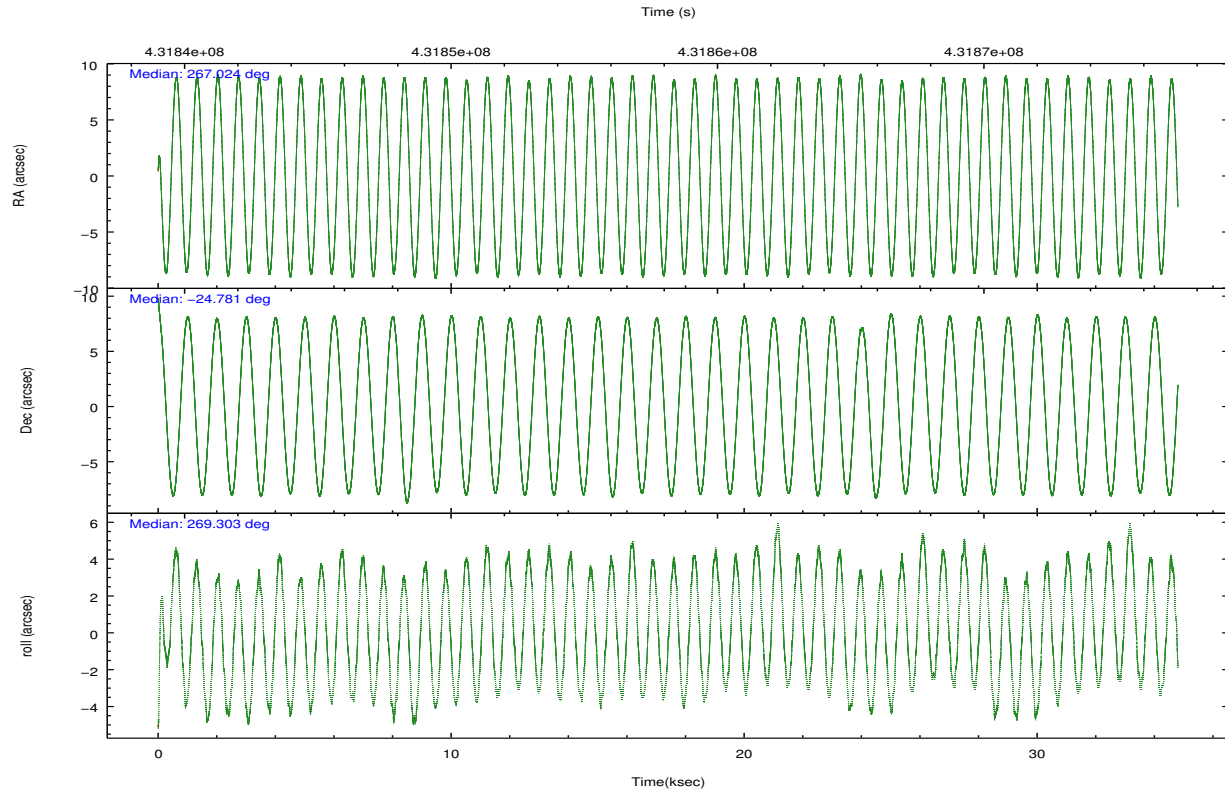
	<b>ccd 7</b>
grade 0 events	12999
	4%
grade 1 events	328
	0%
grade 2 events	27790
	9%
grade 3 events	12000
	4%
grade 4 events	11814
	4%
grade 5 events	29372
	10%
grade 6 events	69640
	24%
grade 7 events	124665
	43%

## 2.2 Compared Parameters

Parameter	Planned	Actual	Parameter	Planned	Actual
Instrument	ACIS	ACIS	Obspar format version number	7	7
Detector	ACIS-7	ACIS-7	Obspar file type	PREDICTED	ACTUAL
Grating	NONE	NONE	Obspar update status	NONE	UPDATED
Data mode	FAINT	FAINT	Number of optional ACIS chips dropped	0	0
Observation mode	POINTING	POINTING	On-chip summing requested	N	N
[deg] Pointing RA	267.009361	267.0244561468208	Subarray requested	NONE	NONE
[deg] Pointing Dec	-24.757809	-24.78147096419888	Alternating exposures requested	N	N
[deg] Pointing Roll	269.144845	269.3077982355961	[s] Primary exposure time	0.000000	3
[s] Window start time (MET)	428544066.184000	428544066.184000			
[s] Window stop time (MET)	433814466.184000	433814466.184000			
[mm] SIM focus pos	-0.684267	-0.6828225247311905			
[mm] SIM defocus	0	0.001444936568705701			
[mm] SIM translation stage pos	-190.132523	-190.1400660498719			
[mm] SIM translation stage offset	0	0.00754346686406393			
[s] Observation start time (MET)	431841091.184000	431840008.93642			
Observation start date	2011-09-08T03:50:25	2011-09-08T03:33:28			
[s] Observation end time (MET)	431875541.184000	431876400.02583			
Observation end date	2011-09-08T13:24:35	2011-09-08T13:40:00			
Read mode	TIMED	TIMED			

## 2.3 Aspect



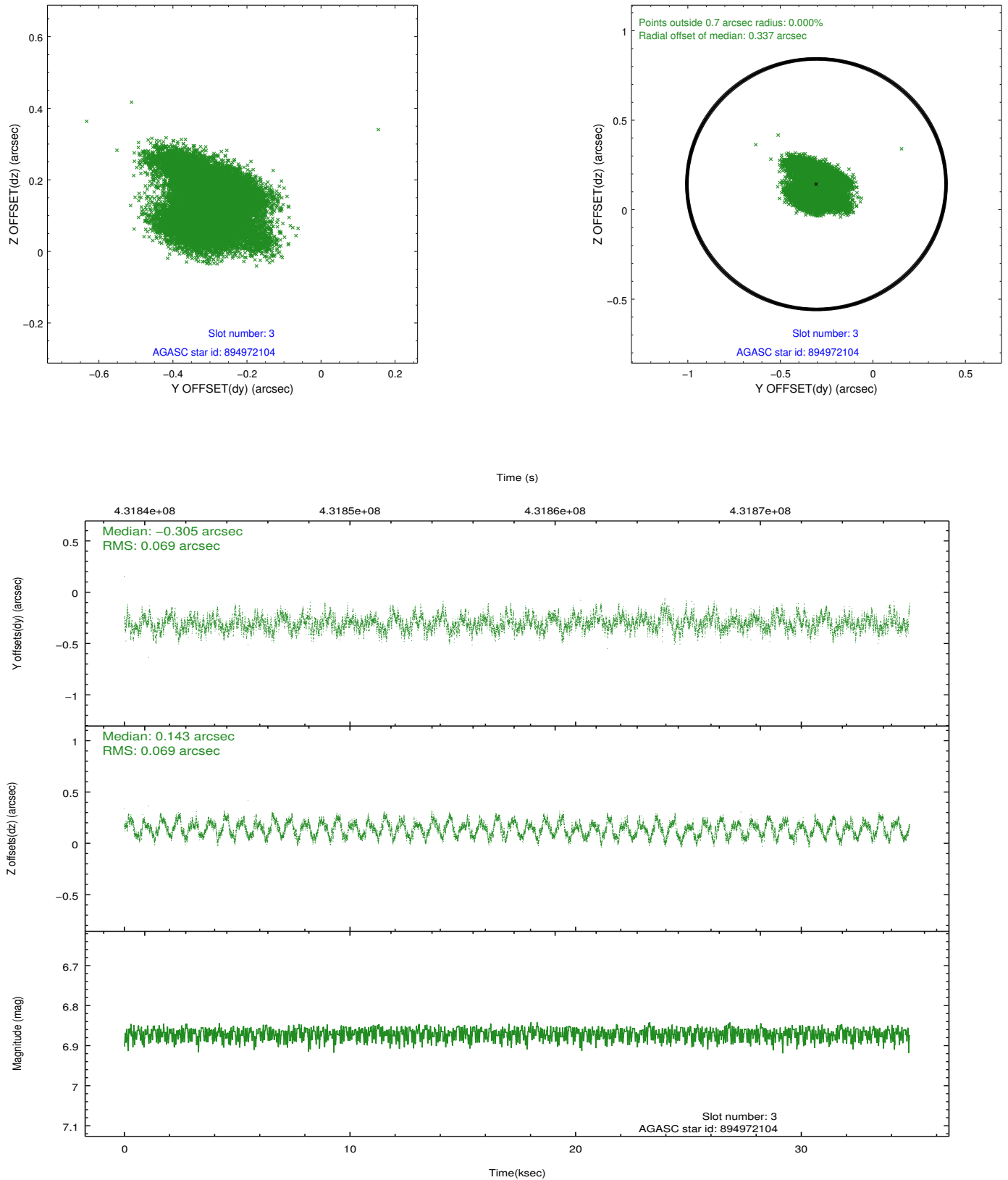


### Slot Statistics

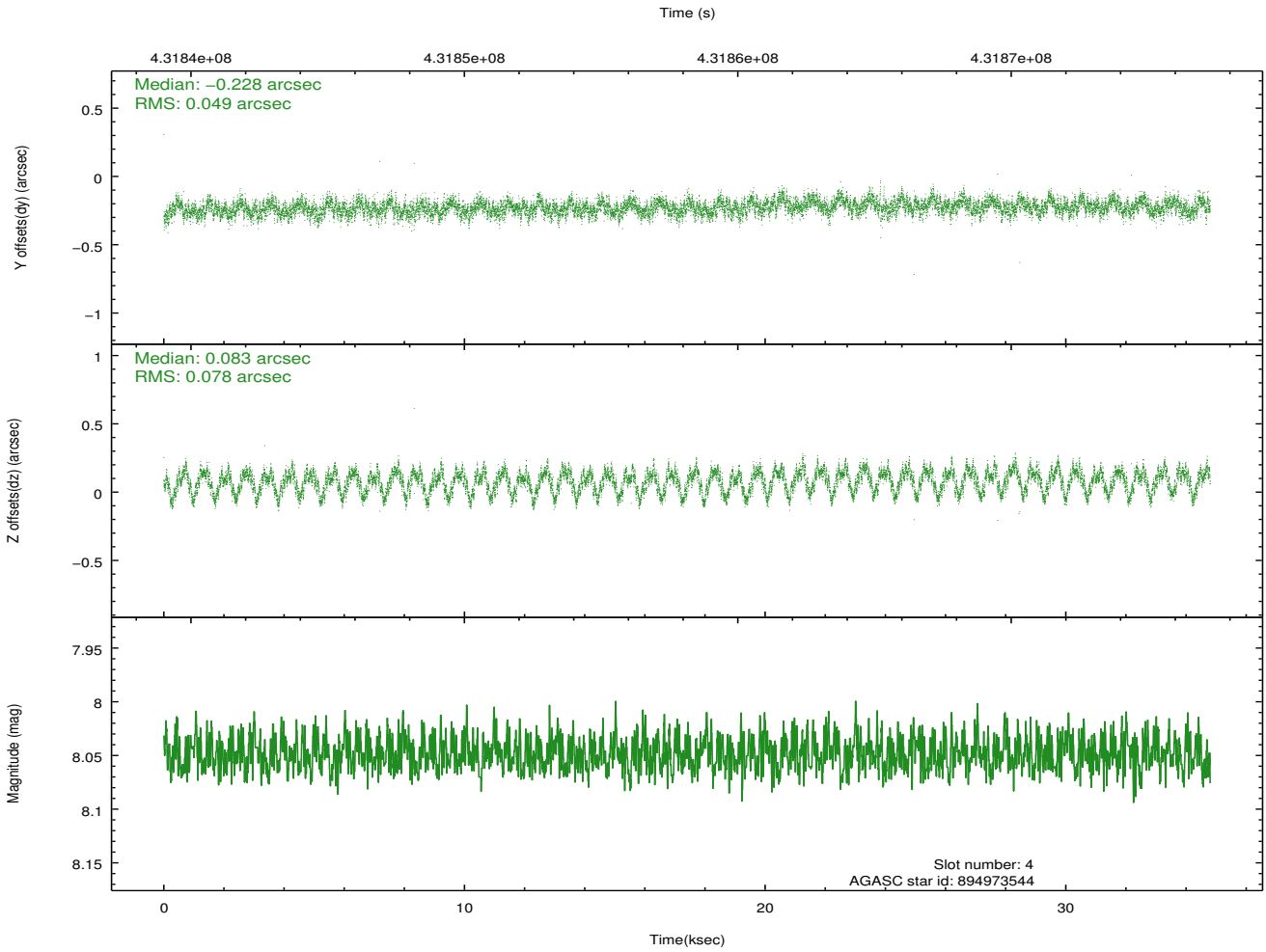
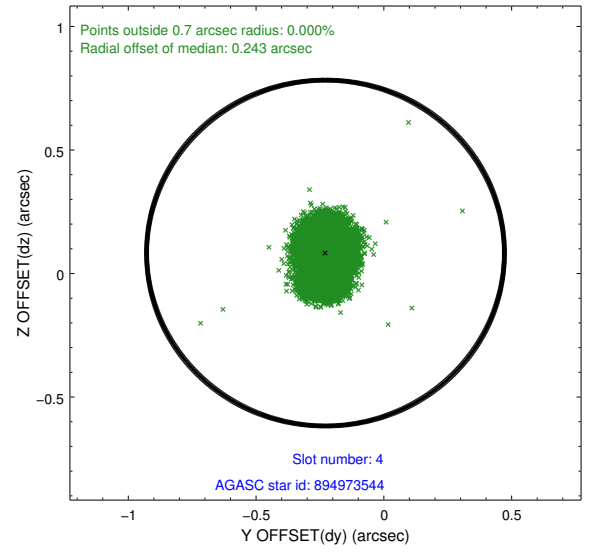
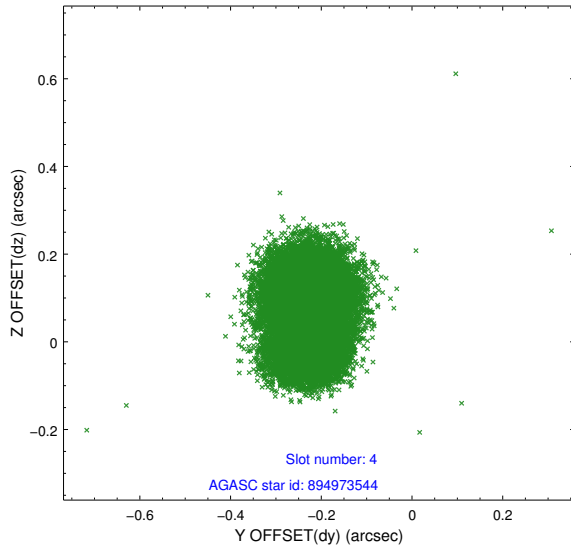
slot	status	id	mag	n_pts	med_dy	med_dz	dr1	dr2	ra	dec	mean_y	mean_z
0	FID	ACIS-S-2	6.89	8489	-0.106	-0.064	0.014	0.023	0.000000	0.000000	-764.11	-1734.83
1	FID	ACIS-S-4	6.98	8489	0.139	0.050	0.013	0.024	0.000000	0.000000	2149.43	173.66
2	FID	ACIS-S-6	7.12	8489	-0.060	0.021	0.015	0.030	0.000000	0.000000	398.02	811.11
3	GUIDE	894972104	6.87	16976	-0.305	0.143	0.104	0.165	267.489380	-24.207054	-2003.04	1545.97
4	GUIDE	894973544	8.05	16969	-0.228	0.083	0.099	0.156	266.605572	-24.141151	-2197.73	-1359.58
5	GUIDE	895485920	8.65	16971	0.273	0.107	0.077	0.126	266.932426	-25.188840	1555.79	-227.14
6	GUIDE	895489704	8.78	16972	0.315	-0.356	0.109	0.190	266.328076	-25.361339	2212.89	-2183.43
7	GUIDE	895486672	9.01	16963	-0.055	0.038	0.100	0.156	267.522168	-25.216127	1628.70	1694.67

## 2.4 Star Slots

### 2.4.1 Slot 3

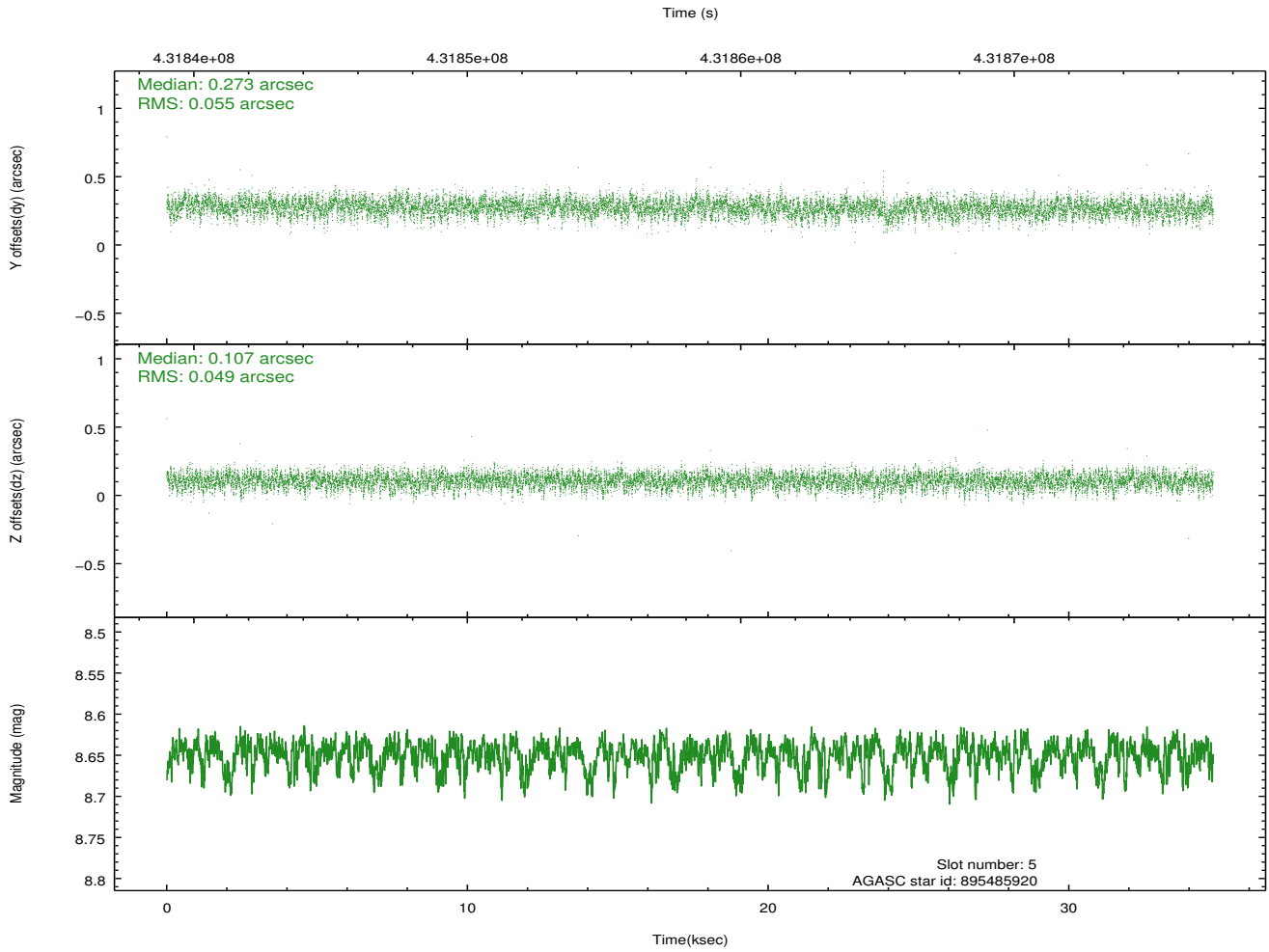
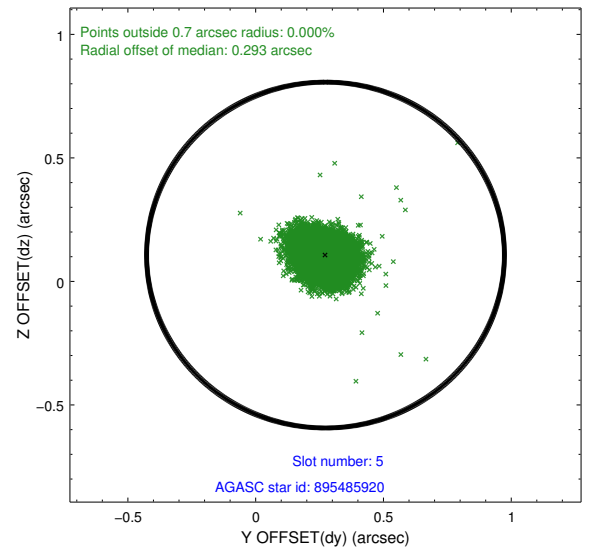
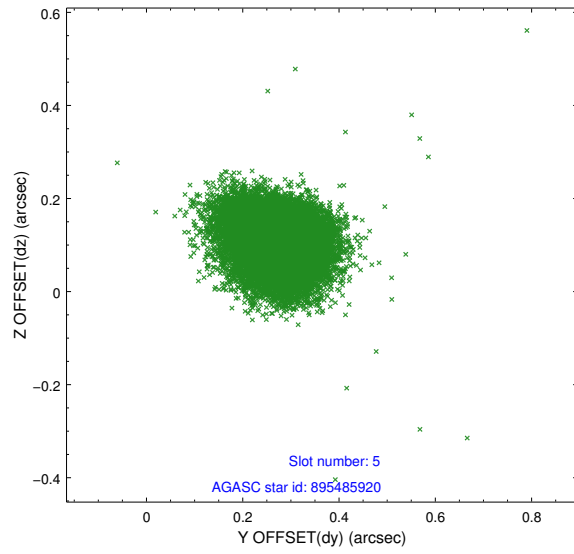


## 2.4.2 Slot 4

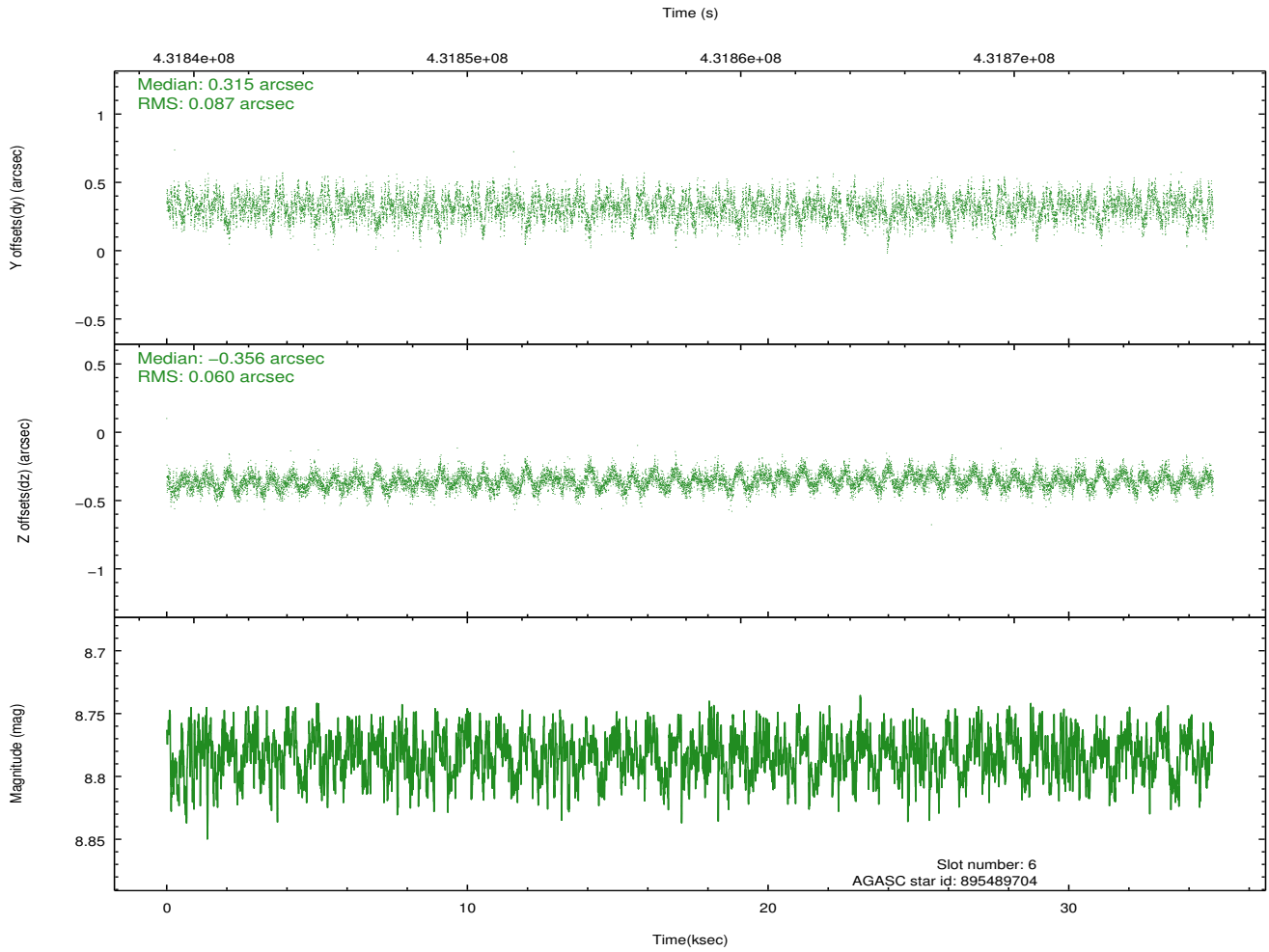
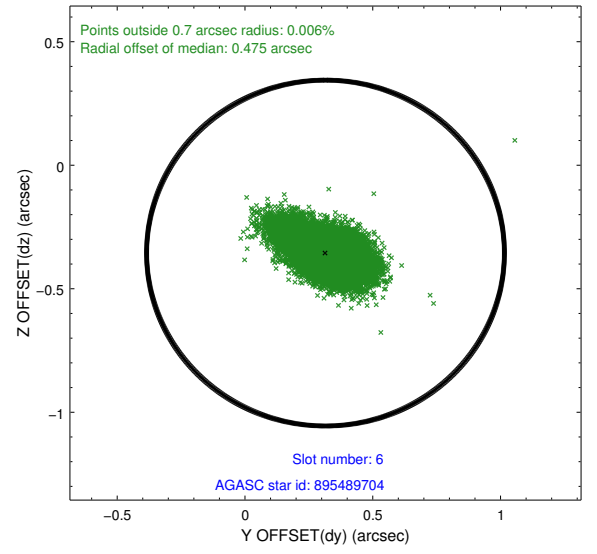
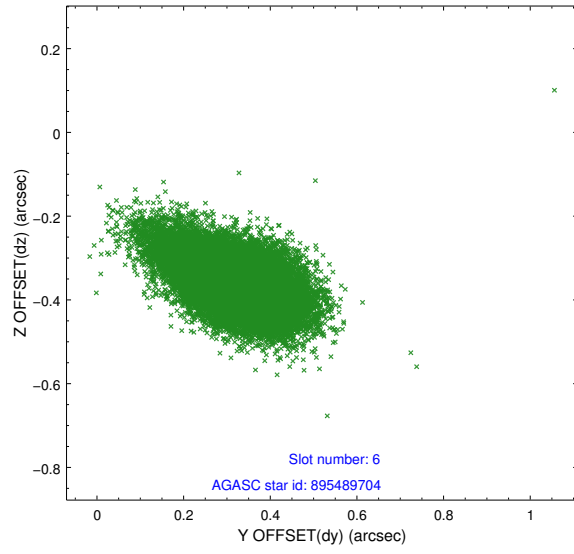




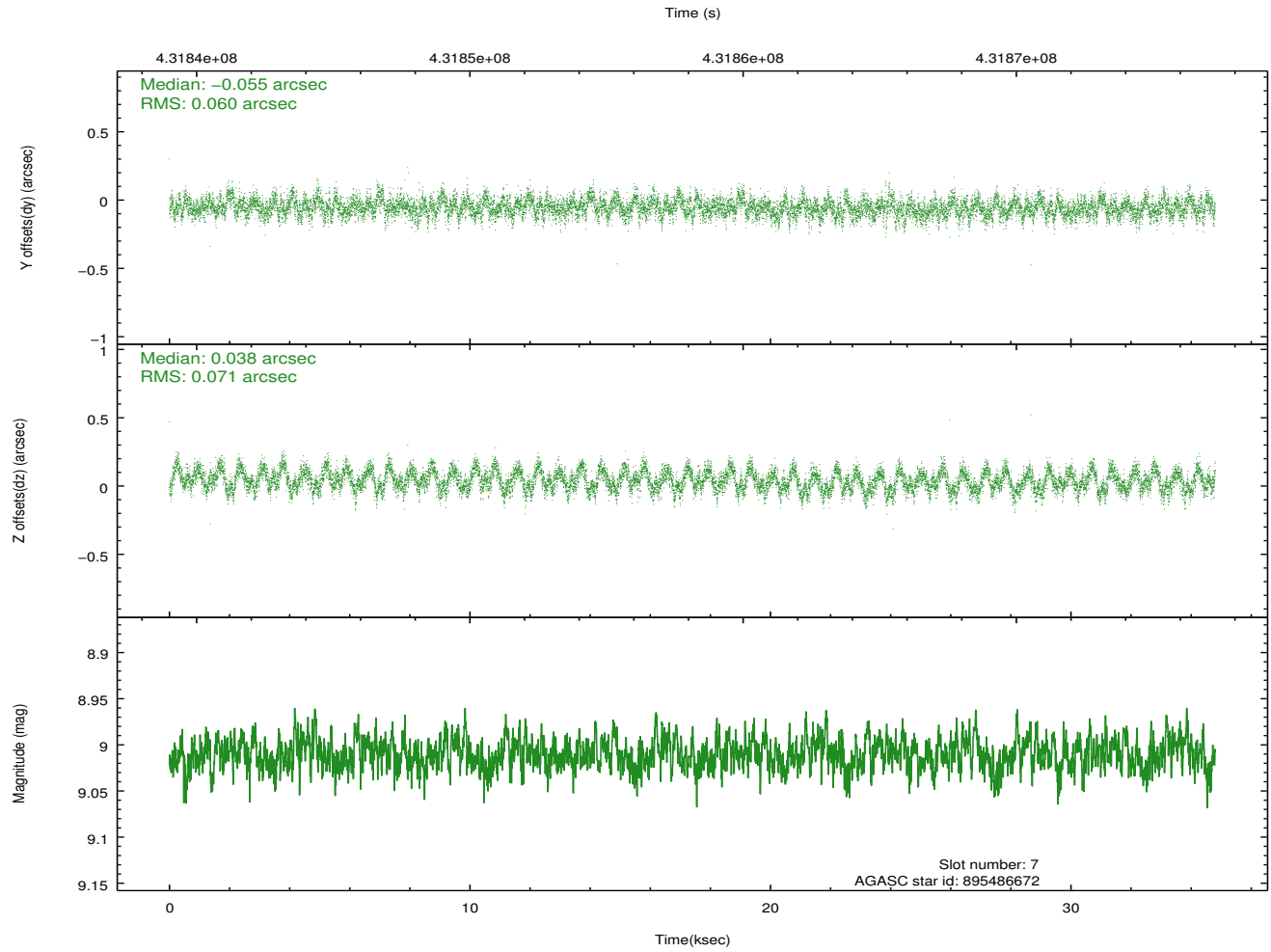
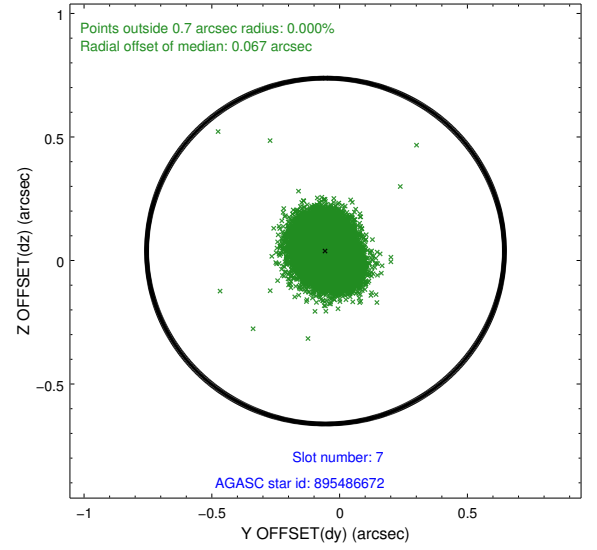
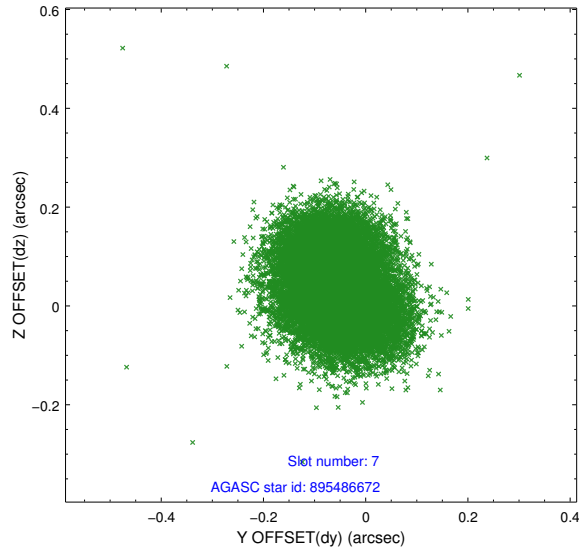
### 2.4.3 Slot 5



## 2.4.4 Slot 6

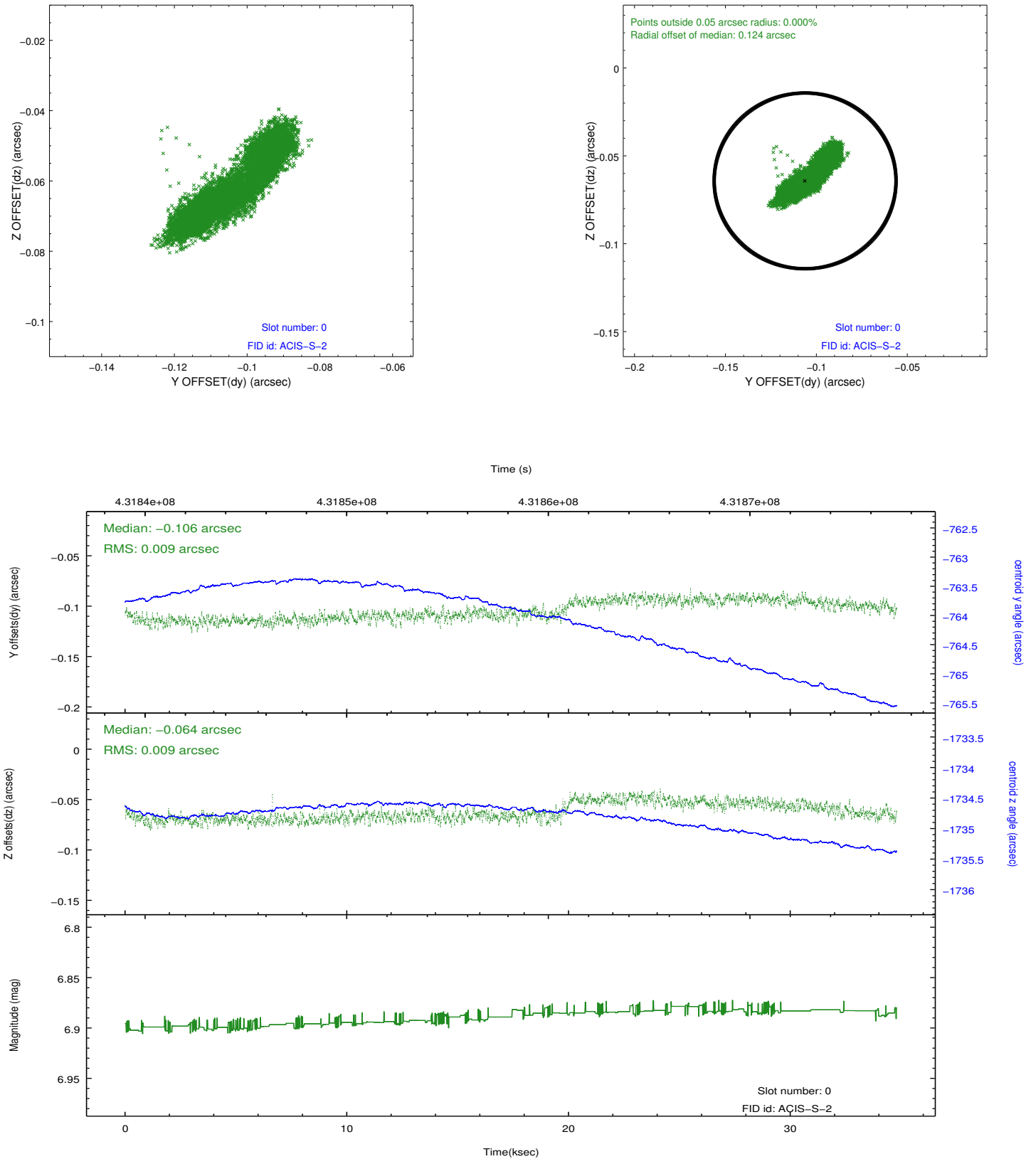


## 2.4.5 Slot 7

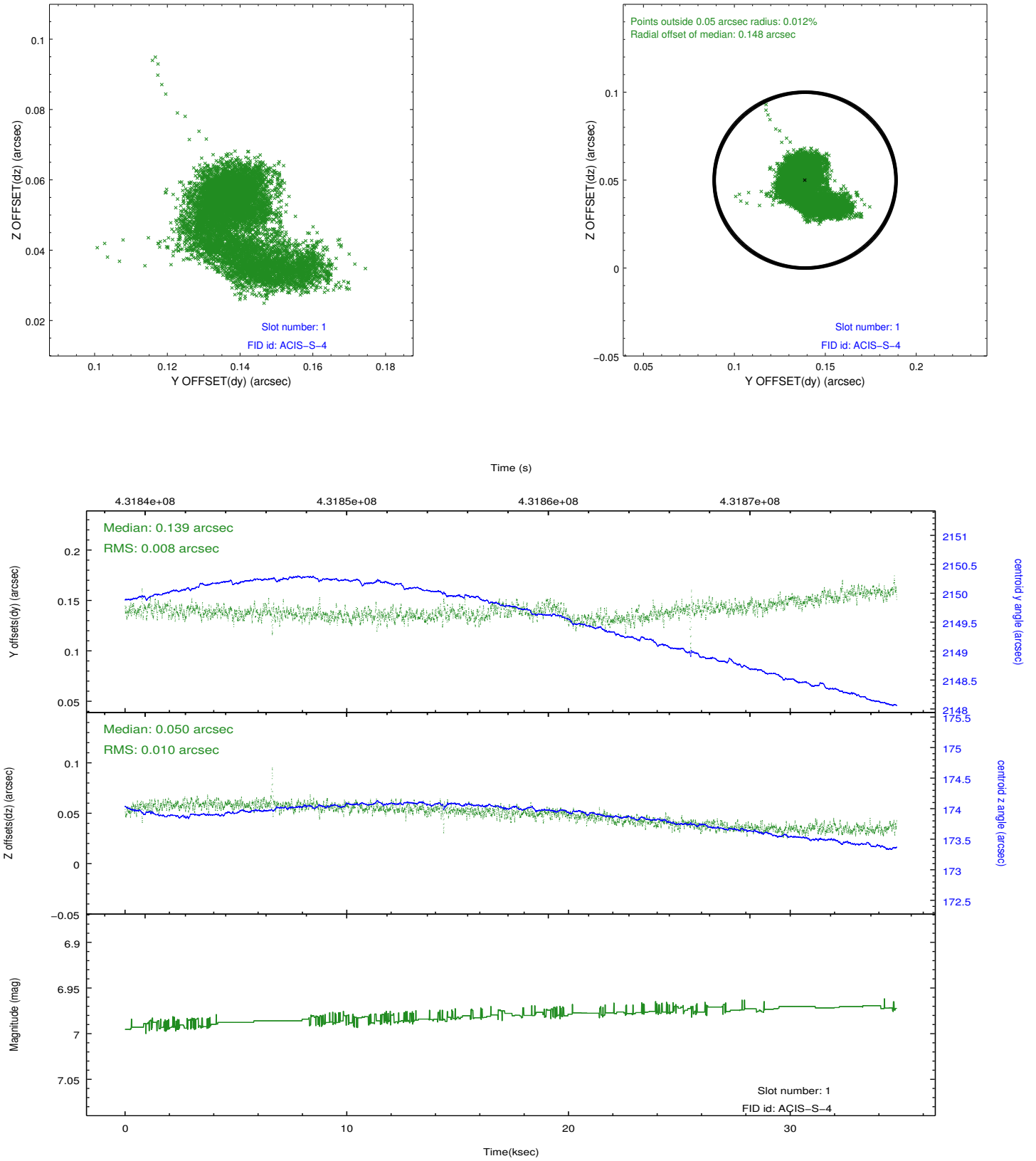


## 2.5 FID Slots

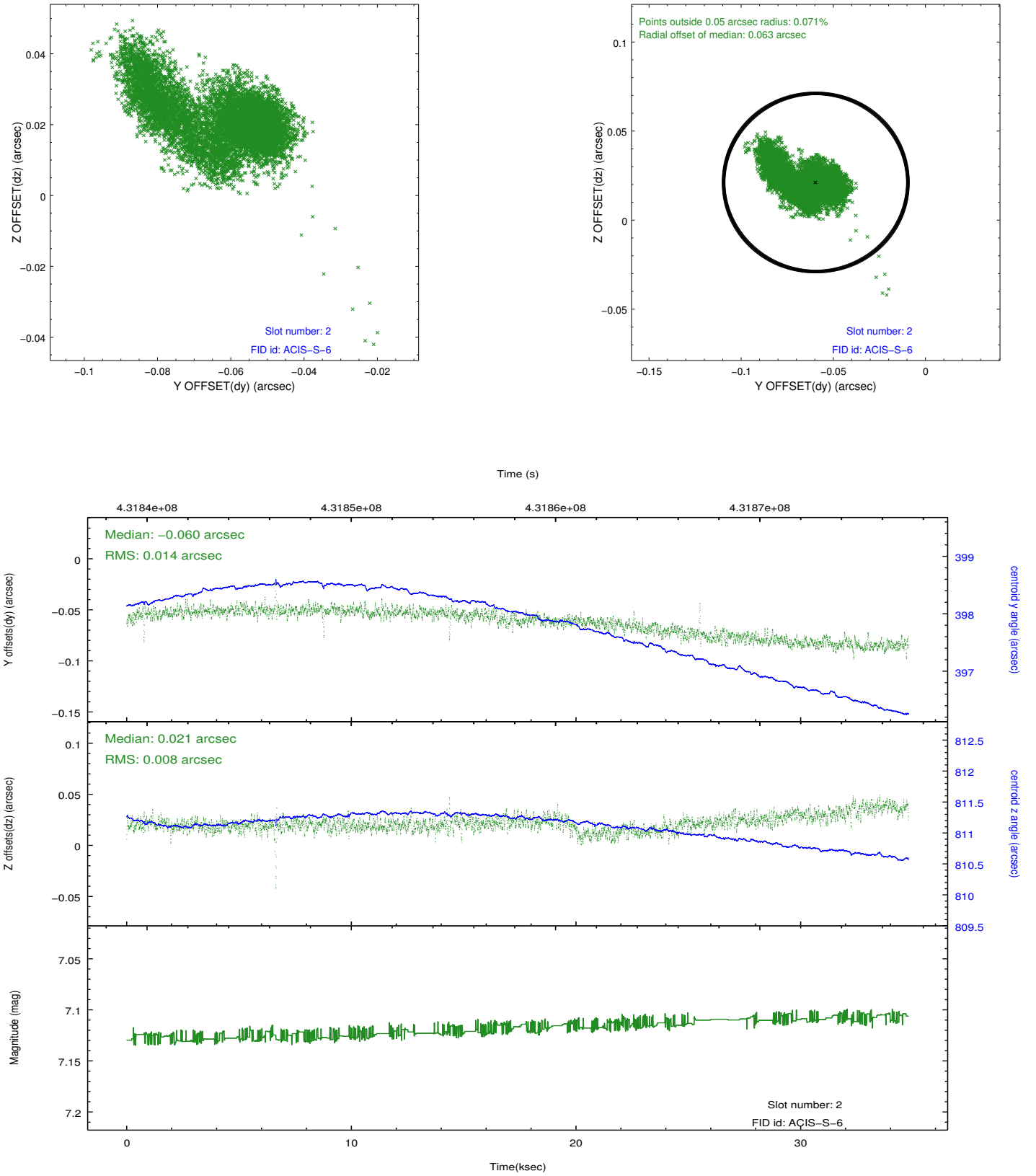
### 2.5.1 Slot 0



## 2.5.2 Slot 1



### 2.5.3 Slot 2



## A Summary

### A.1 Status

V&V Scientist	Beth Sundheim
V&V Date (YYYY-MM-DD)	2012.02.23
V&V Edition	1
V&V Disposition and Status	OK
V&V Charge Time	34.529013915002

### A.2 Comments

Window preference met.