

# V&V Reference Report

## L2 ASCDS Version : 8.4.4

Observation 13799 - L2 Version 1  
Chandra X-Ray Center

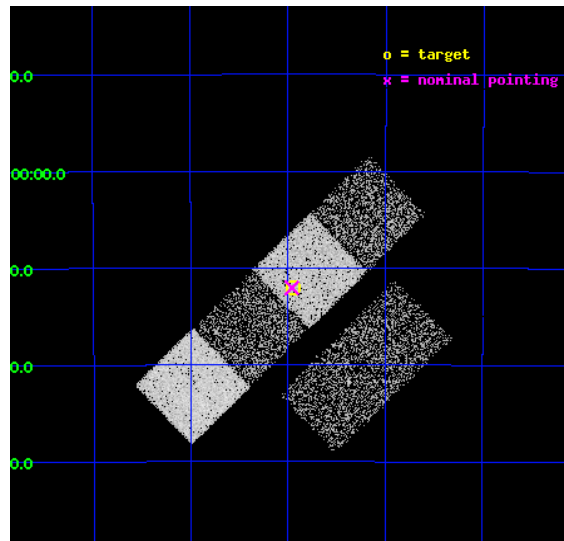
L2 Processing Date : May 13 2012

## Contents

<b>1</b>	<b>Front</b>	<b>2</b>
<b>2</b>	<b>OBI</b>	<b>3</b>
2.1	OBI . . . . .	3
2.1.1	Images . . . . .	3
2.1.2	Bias . . . . .	3
2.1.3	Parameters . . . . .	4
2.1.4	Events . . . . .	4
2.2	Compared Parameters . . . . .	5
2.3	Aspect . . . . .	6
2.4	Star Slots . . . . .	9
2.4.1	Slot 3 . . . . .	9
2.4.2	Slot 4 . . . . .	10
2.4.3	Slot 5 . . . . .	11
2.4.4	Slot 6 . . . . .	12
2.4.5	Slot 7 . . . . .	13
2.5	FID Slots . . . . .	14
2.5.1	Slot 0 . . . . .	14
2.5.2	Slot 1 . . . . .	15
2.5.3	Slot 2 . . . . .	16
<b>A</b>	<b>Summary</b>	<b>17</b>
A.1	Status . . . . .	17
A.2	Comments . . . . .	17

# 1 Front

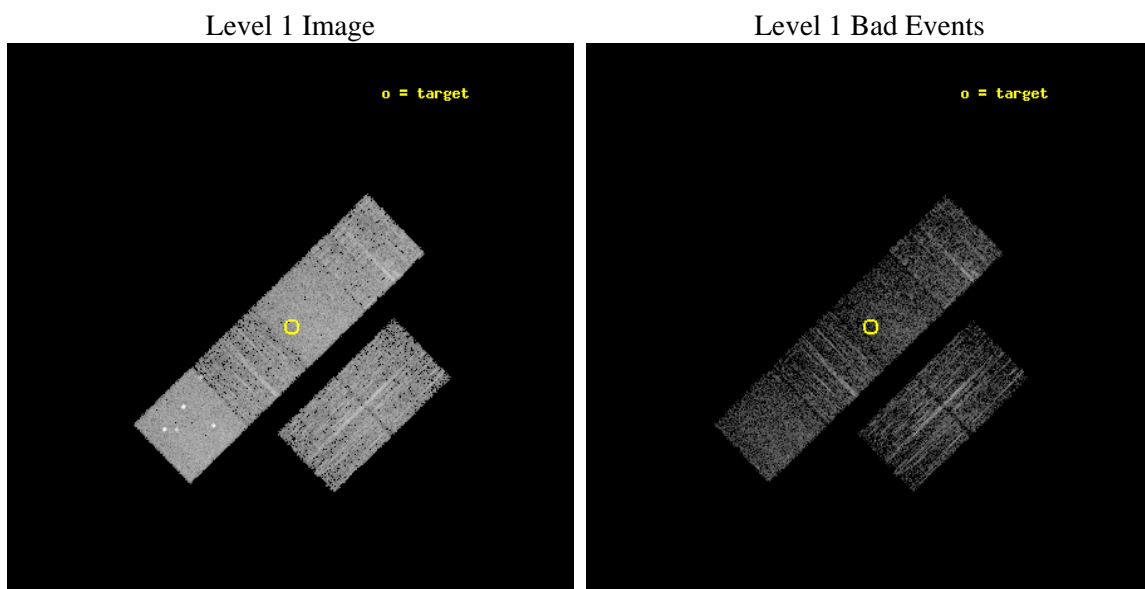
seq_num	501631	Sequence number
obs_id	13799	Observation id
title	A CASE OF MISTAKEN IDENTITY: DISRUPTED RECYCLED PULSARS OR ORPHANED ANTI-MAGNETARS?	Proposal title
observer	Prof. Dr. Bruce Allen	Principal investigator
object	PSR J1339-4712	Source name
dtcycle	0	&#160
cycle	P	events from which exps? Prim/Second/Both
ra_targ	204.985833	Observer's specified target RA [deg]
dec_targ	-47.201528	Observer's specified target Dec [deg]
ra_nom	204.99033575261	Nominal RA [deg]
dec_nom	-47.200903188392	Nominal Dec [deg]
roll_nom	315.80997135834	Nominal Roll [deg]
revision	1	Processing version of data
ontime	3462.3999871612	Sum of GTIs [s]
livetime	3418.5569937167	Livetime [s]
ontime2	3462.3999871612	Sum of GTIs [s]
ontime3	3462.3999871612	Sum of GTIs [s]
ontime5	3462.3999871612	Sum of GTIs [s]
ontime6	3459.1589368582	Sum of GTIs [s]
ontime7	3462.3999871612	Sum of GTIs [s]
ontime8	3462.3999871612	Sum of GTIs [s]
l2events	34389	Number of level 2 events



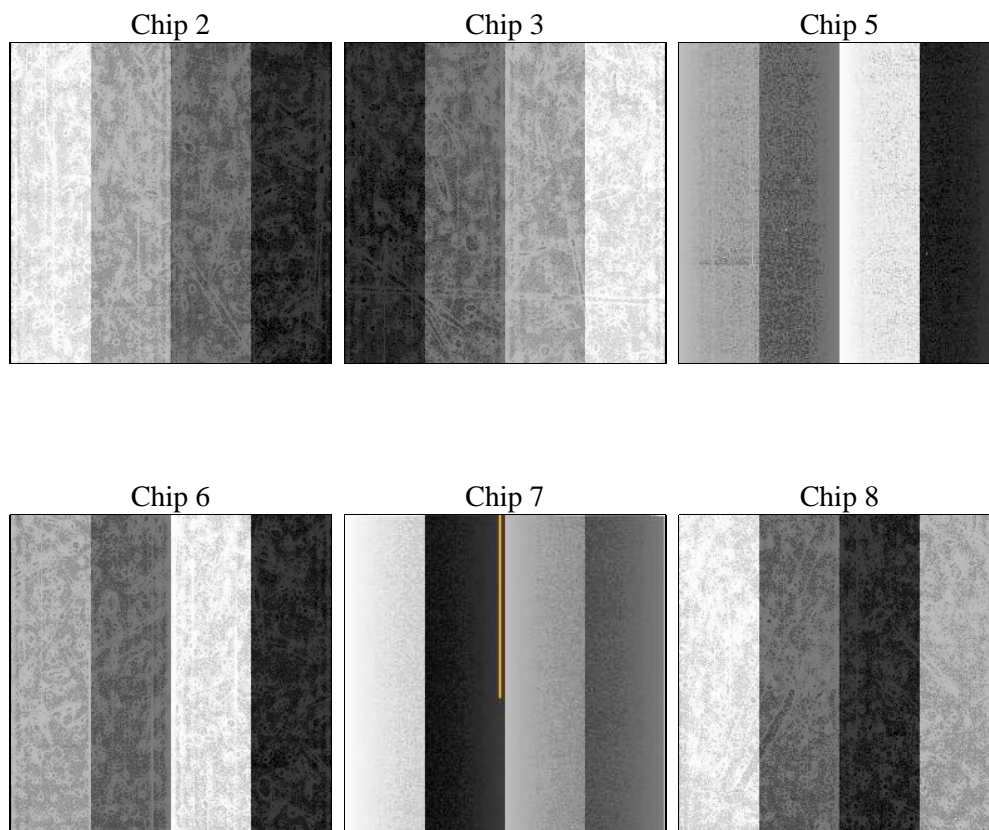
## 2 OBI

### 2.1 OBI

#### 2.1.1 Images



#### 2.1.2 Bias



### 2.1.3 Parameters

obi_num	0	Obi number	sched_exp_time	3500.485000	[s] Scheduled observation exposure time
ascdsver	8.4.4	Processing system revision	ontime	3462.3999871612	Sum of GTIs [s]
caldsver	4.4.9	&#160	ontime2	3462.3999871612	Sum of GTIs [s]
date	2012-05-13T17:27:31	Date and time of file creation	ontime3	3462.3999871612	Sum of GTIs [s]
revision	1	Processing version of data	ontime5	3462.3999871612	Sum of GTIs [s]
			ontime6	3459.1589368582	Sum of GTIs [s]
			ontime7	3462.3999871612	Sum of GTIs [s]
			ontime8	3462.3999871612	Sum of GTIs [s]
			l1events	148136	Number of level 1 events

### 2.1.4 Events

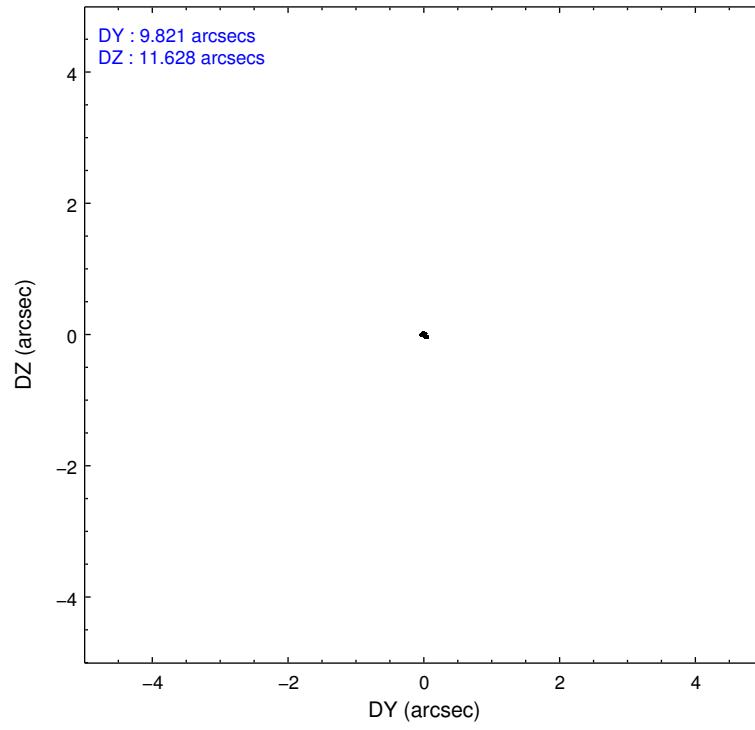
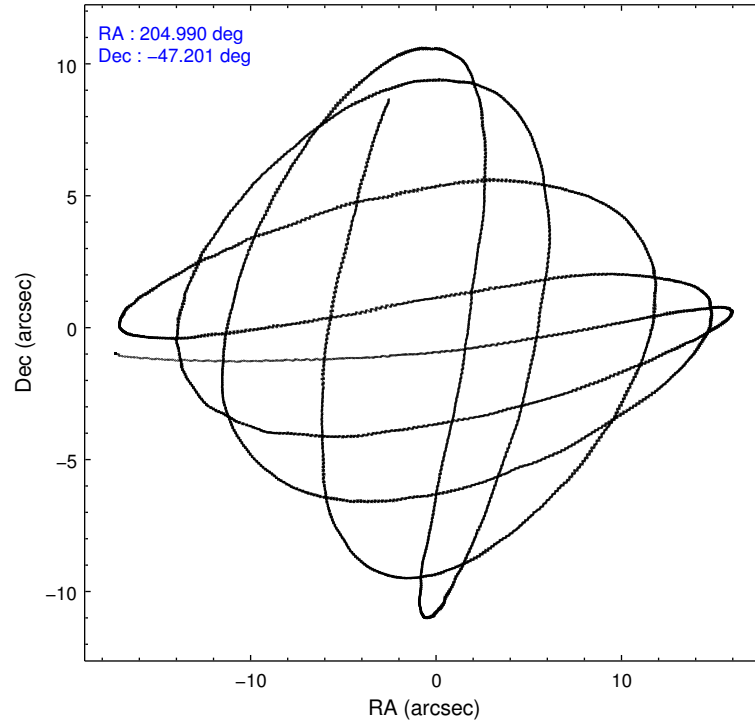
	ccd 2	ccd 3	ccd 5	ccd 6	ccd 7	ccd 8		ccd 2	ccd 3	ccd 5	ccd 6	ccd 7	ccd 8
level 1 events	20279	19219	34964	19987	26907	26780	grade 0 events	838	751	3244	853	1017	1913
rejected events	17957	17119	16561	17575	15397	19802		4%	3%	9%	4%	3%	7%
rejected %	88%	89%	47%	87%	57%	73%	grade 1 events	12	21	62	8	42	12
								0%	0%	0%	0%	0%	0%
							grade 2 events	536	436	5505	533	2323	1690
								2%	2%	15%	2%	8%	6%
							grade 3 events	215	223	545	276	954	744
								1%	1%	1%	1%	3%	2%
							grade 4 events	236	251	551	245	987	696
								1%	1%	1%	1%	3%	2%
							grade 5 events	961	950	2339	994	2765	1466
								4%	4%	6%	4%	10%	5%
							grade 6 events	499	445	8581	508	6243	1944
								2%	2%	24%	2%	23%	7%
							grade 7 events	16982	16142	14137	16570	12576	18315
								83%	83%	40%	82%	46%	68%

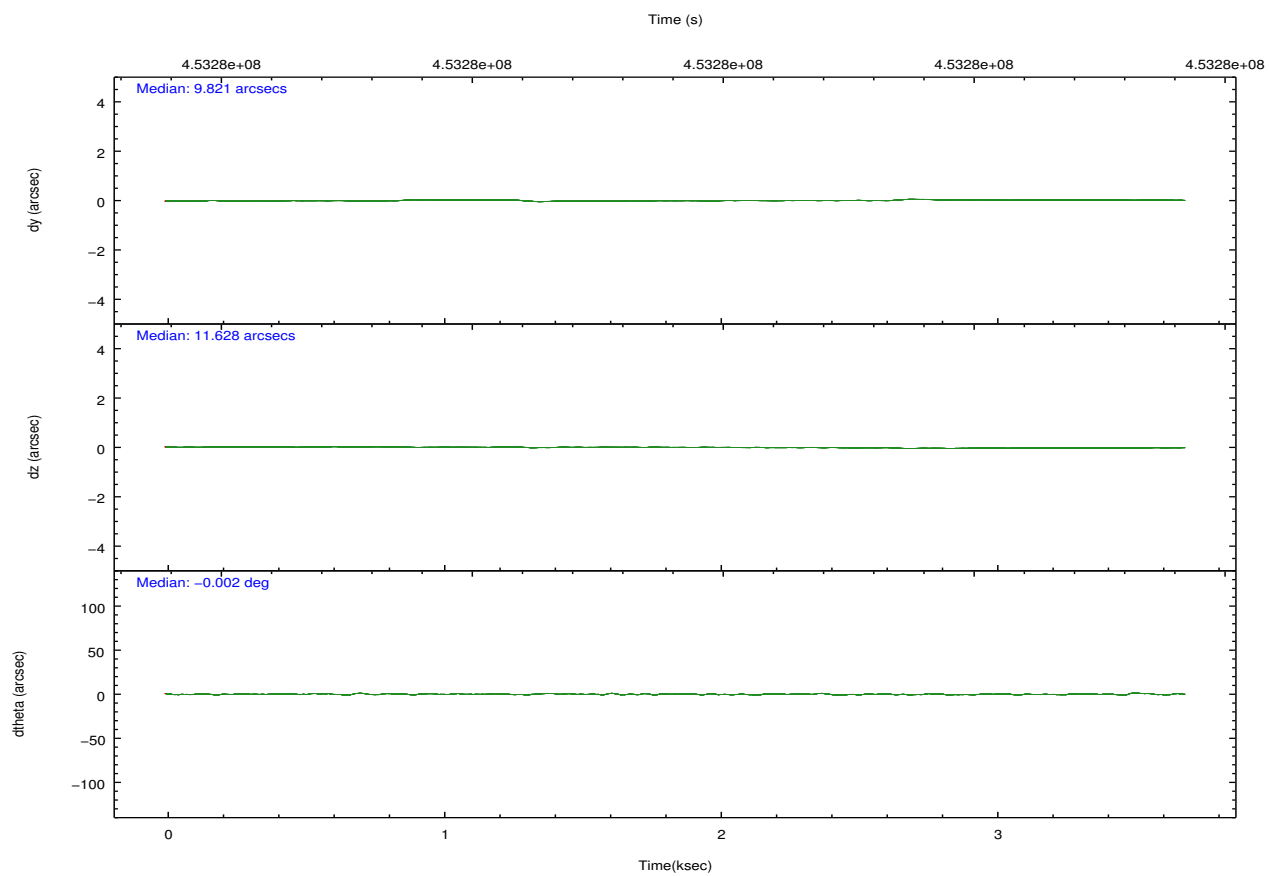
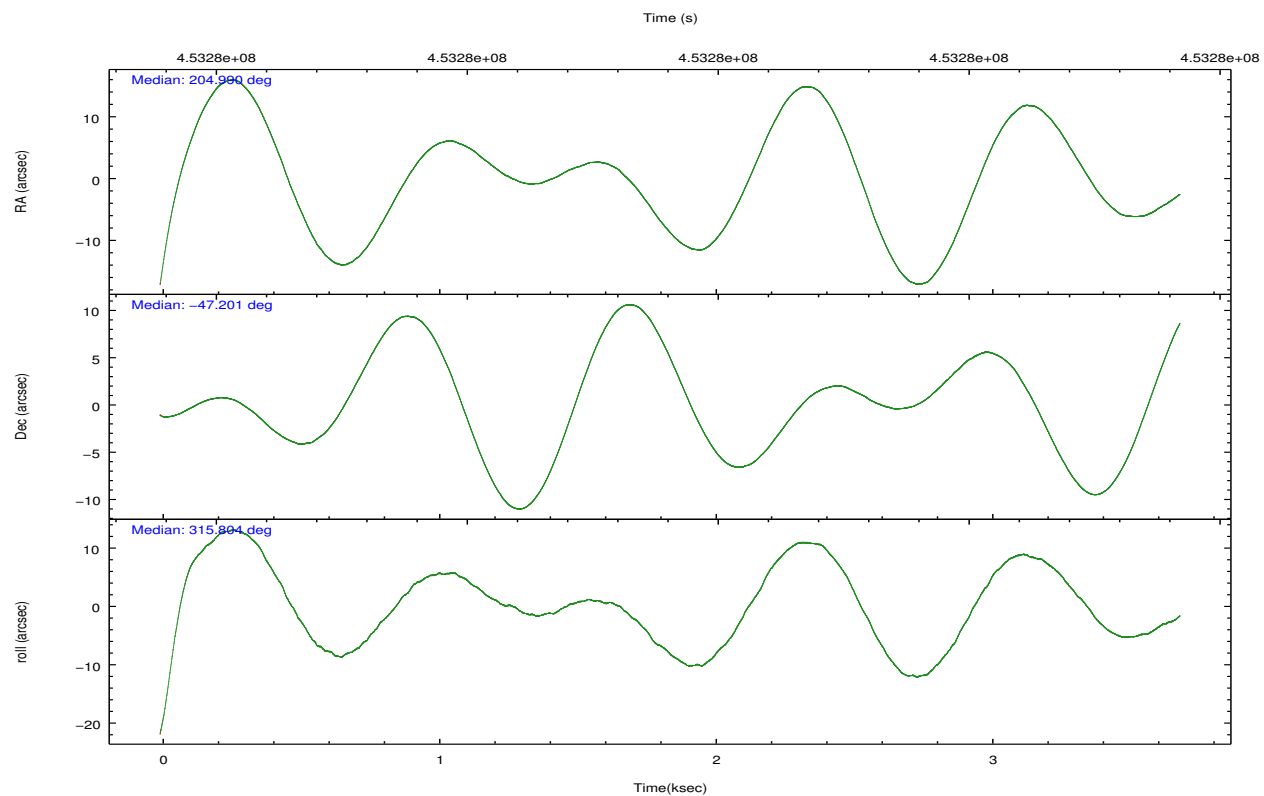


## 2.2 Compared Parameters

Parameter	Planned	Actual	Parameter	Planned	Actual
Instrument	ACIS	ACIS	Obspar format version number	7	7
Detector	ACIS-235678	ACIS-235678	Obspar file type	PREDICTED	ACTUAL
Grating	NONE	NONE	Obspar update status	NONE	UPDATED
Data mode	VFAINT	VFAINT	CCD I0 on	N	N
Observation mode	POINTING	POINTING	CCD I1 on	N	N
[deg] Pointing RA	204.951026	204.9903357526093	CCD I2 on	O1	Y
[deg] Pointing Dec	-47.194496	-47.20090318839227	CCD I3 on	O2	Y
[deg] Pointing Roll	315.624534	315.8099713583426	CCD S0 on	N	N
[mm] SIM focus pos	-0.684267	-0.6828225247311905	CCD S1 on	Y	Y
[mm] SIM defocus	0	0.001444936568705701	CCD S2 on	Y	Y
[mm] SIM translation stage pos	-190.132523	-190.1400660498719	CCD S3 on	Y	Y
[mm] SIM translation stage offset	0	0.00754346686406393	CCD S4 on	Y	Y
[s] Observation start time (MET)	453276145.184000	453274945.66822	CCD S5 on	N	N
Observation start date	2012-05-13T06:01:19	2012-05-13T05:42:25	Number of optional ACIS chips dropped	0	0
[s] Observation end time (MET)	453279646.184000	453279871.30598	On-chip summing requested	N	N
Observation end date	2012-05-13T06:59:40	2012-05-13T07:04:31	Subarray requested	NONE	NONE
Read mode	TIMED	TIMED	Alternating exposures requested	N	N
			[s] Primary exposure time	0.000000	3.2

## 2.3 Aspect



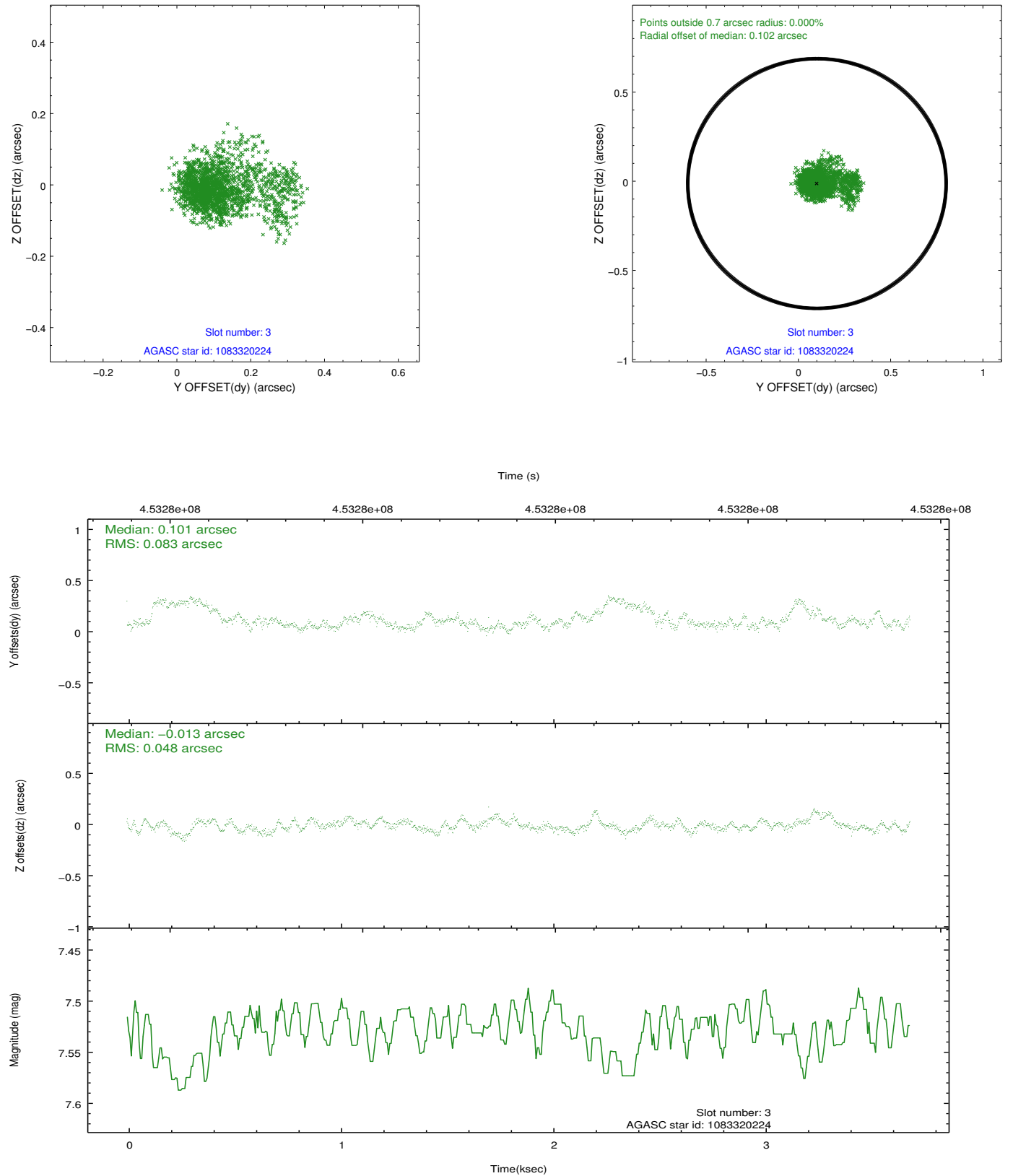


### Slot Statistics

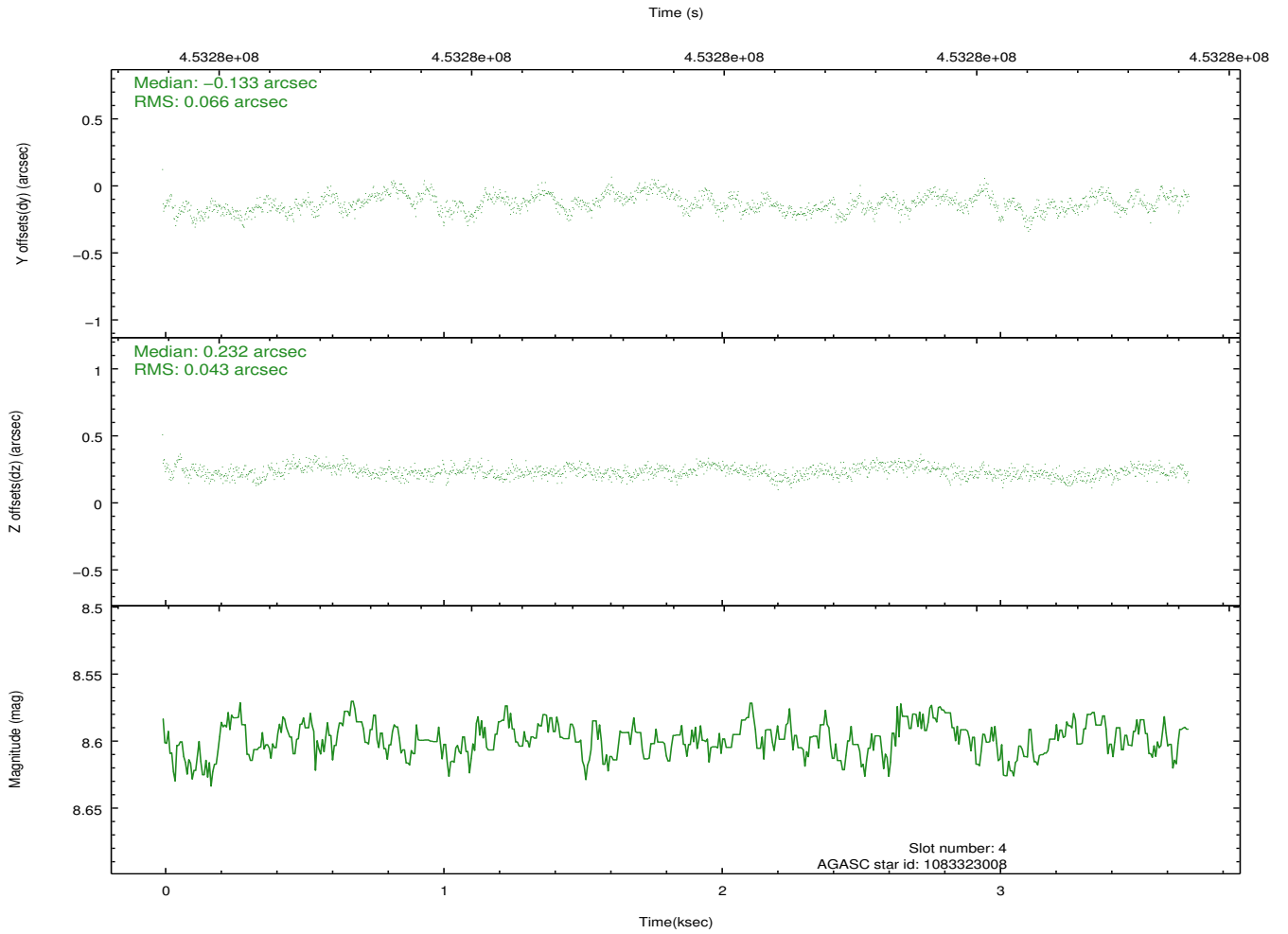
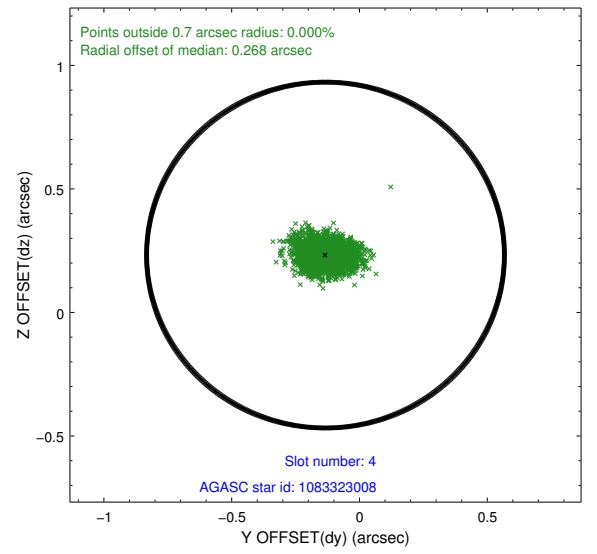
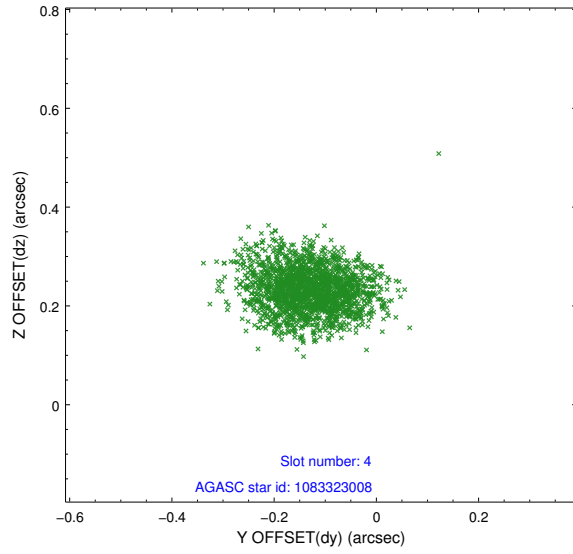
slot	status	id	mag	n_pts	med_dy	med_dz	dr1	dr2	ra	dec	mean_y	mean_z
0	FID	ACIS-S-2	7.04	900	-0.132	-0.097	0.005	0.010	0.000000	0.000000	-762.84	-1732.98
1	FID	ACIS-S-4	7.14	900	0.157	0.058	0.006	0.010	0.000000	0.000000	2150.01	173.80
2	FID	ACIS-S-6	7.26	900	-0.053	0.046	0.007	0.010	0.000000	0.000000	401.49	813.18
3	GUIDE	1083320224	7.53	1800	0.101	-0.013	0.087	0.200	204.147030	-47.299406	-1132.33	-1651.87
4	GUIDE	1083323008	8.60	1800	-0.133	0.232	0.083	0.135	204.660874	-47.913773	1311.08	-2342.20
5	GUIDE	1083331016	8.19	1796	0.028	0.037	0.079	0.127	204.298382	-47.015587	-1589.88	-666.05
6	GUIDE	1083455456	9.06	1800	0.049	-0.016	0.094	0.154	205.749833	-47.356438	1806.29	938.33
7	GUIDE	1083464688	7.12	1799	-0.067	-0.248	0.066	0.107	205.733152	-46.990367	866.40	1862.03

## 2.4 Star Slots

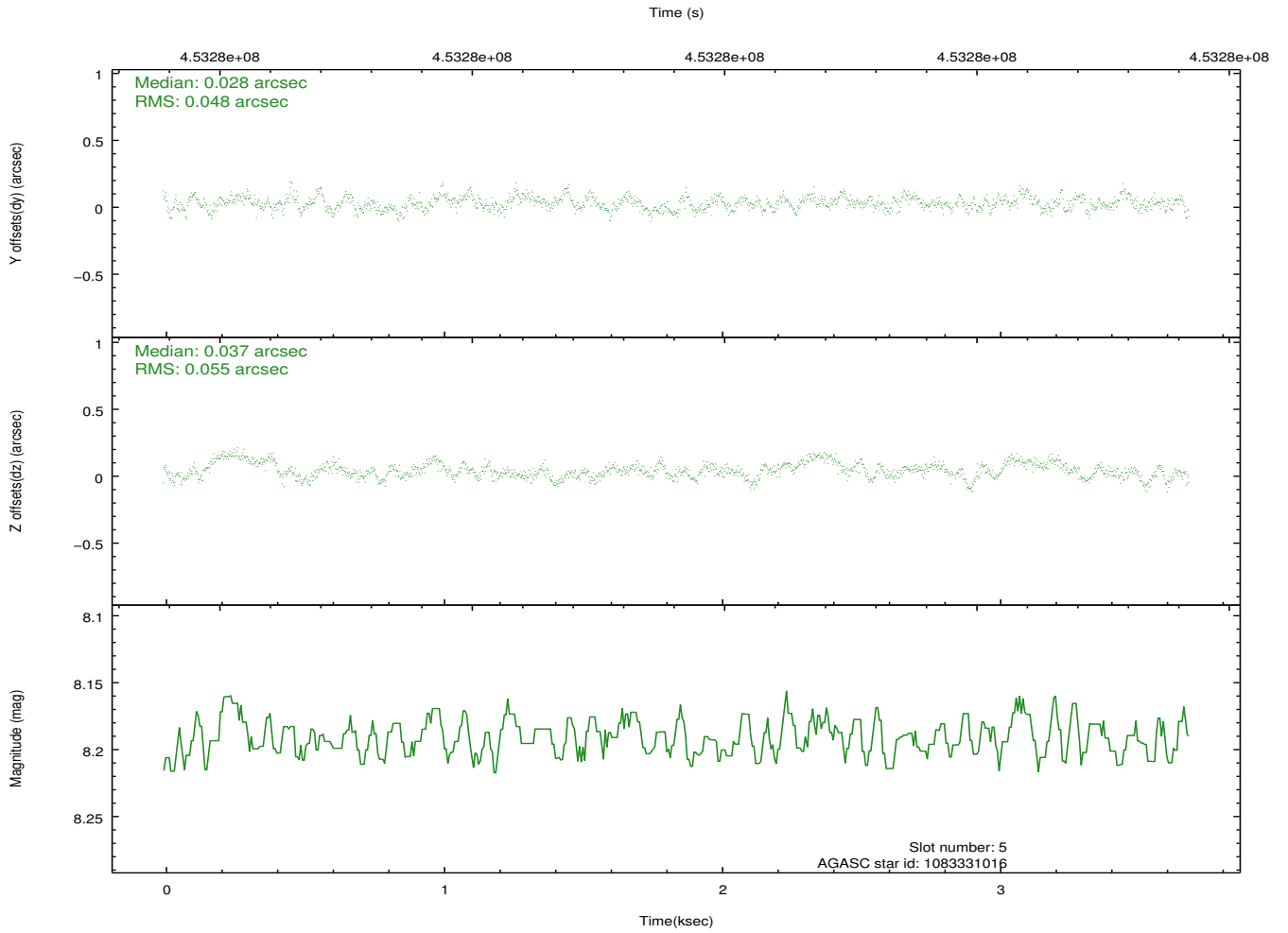
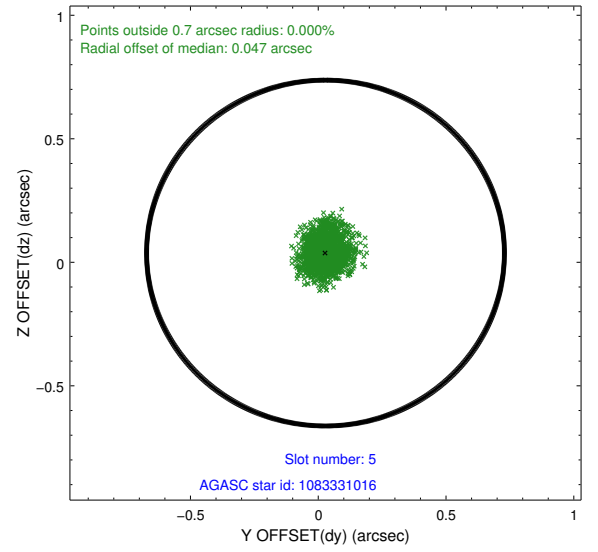
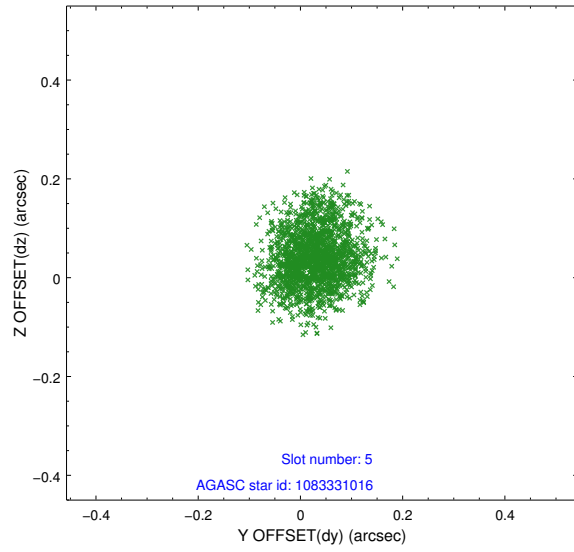
### 2.4.1 Slot 3



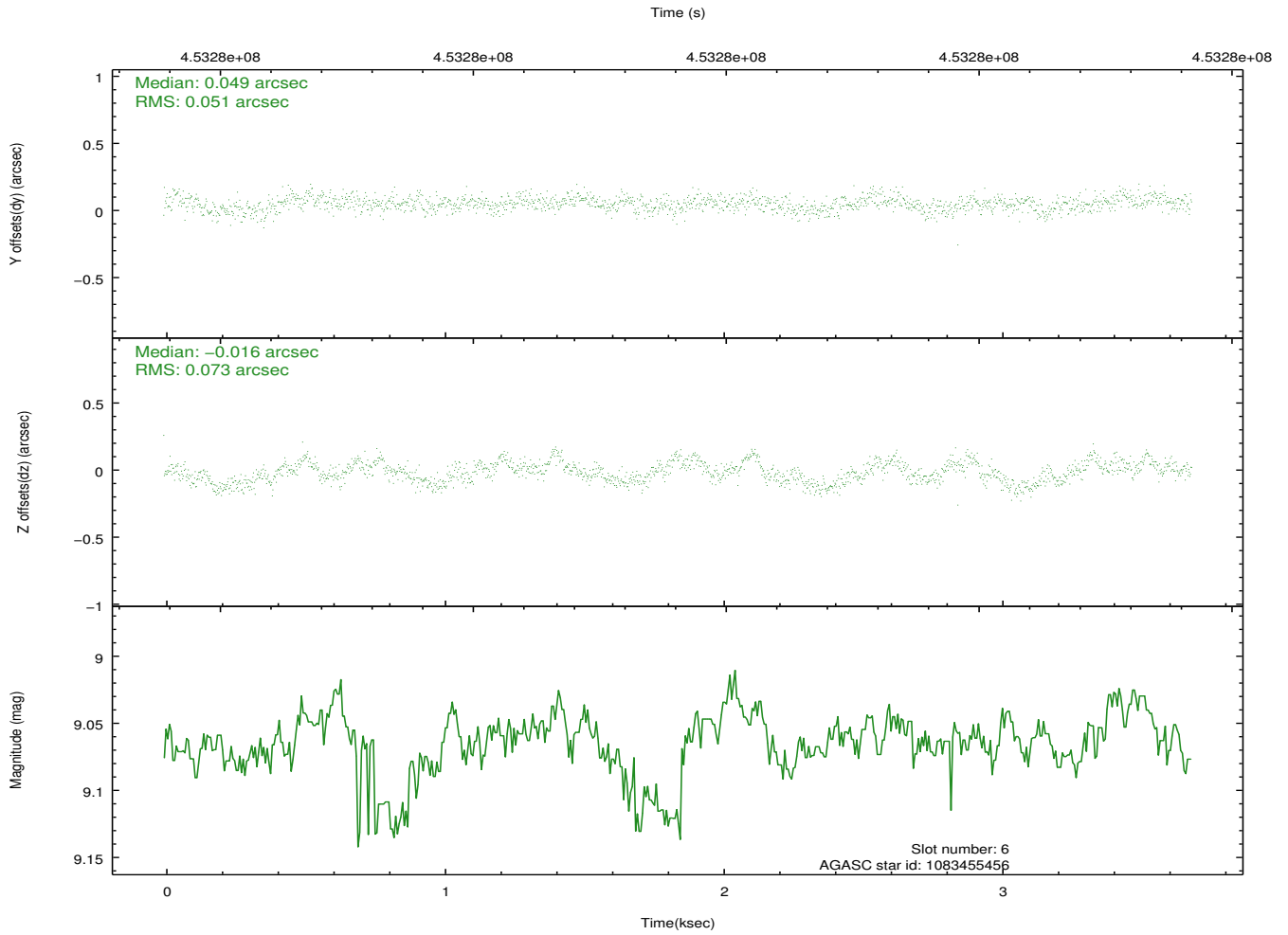
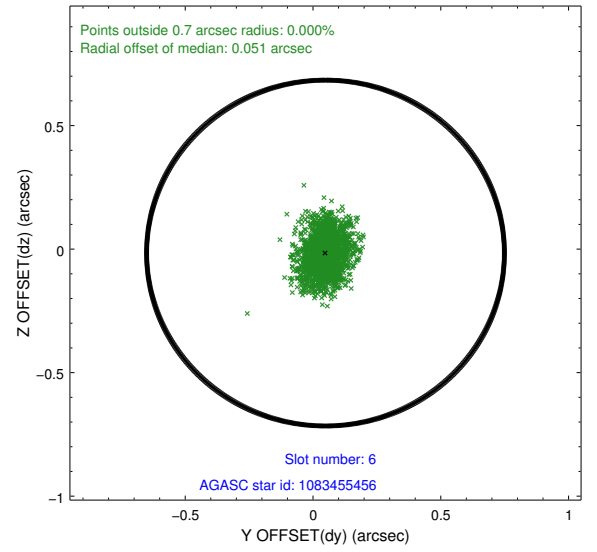
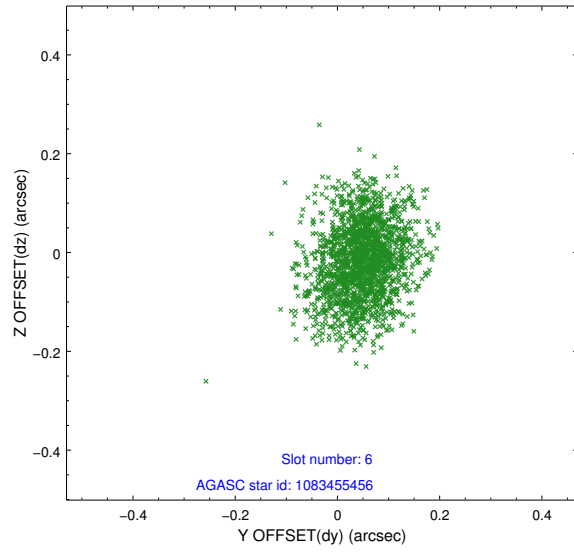
### 2.4.2 Slot 4



### 2.4.3 Slot 5

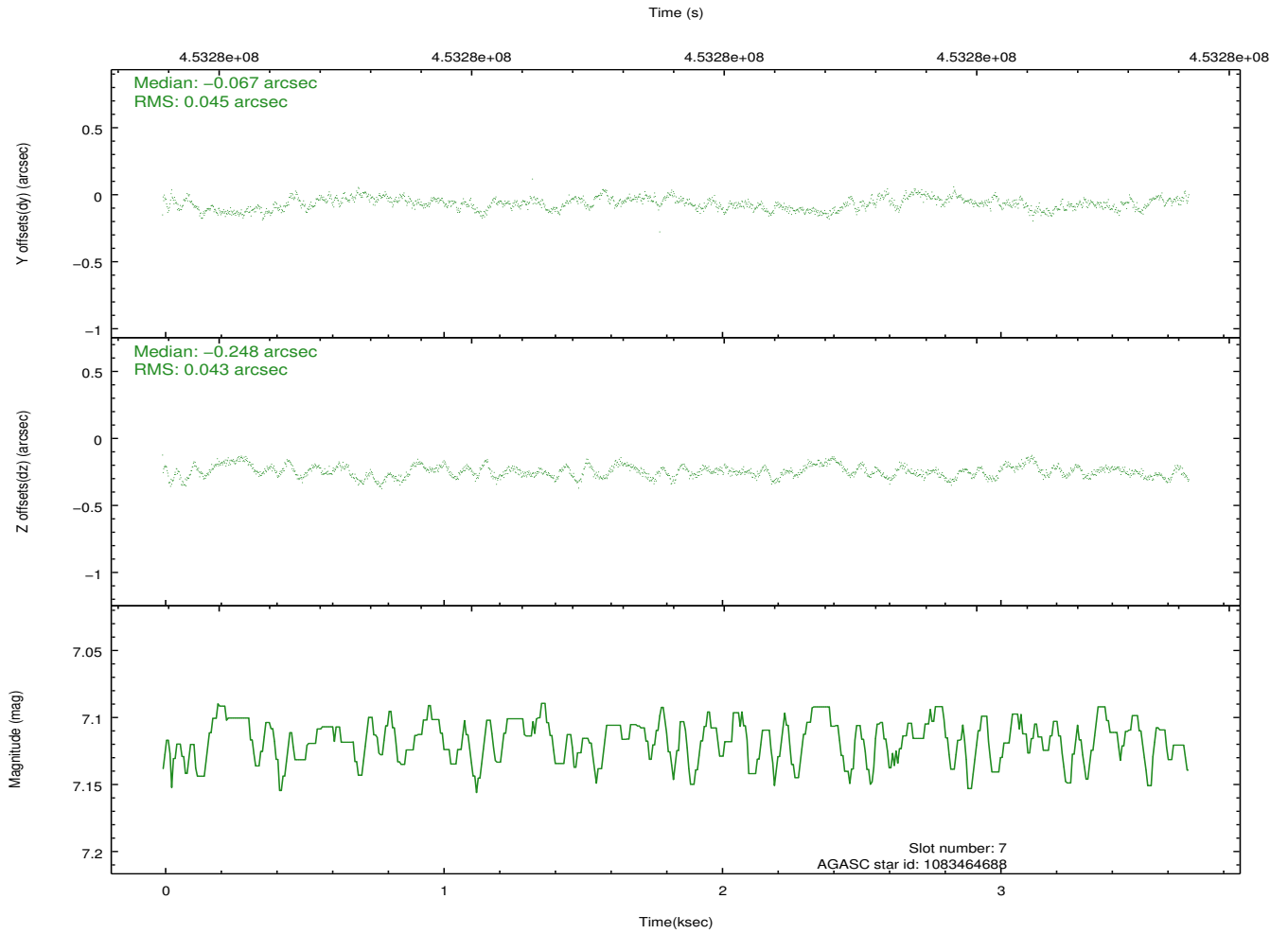
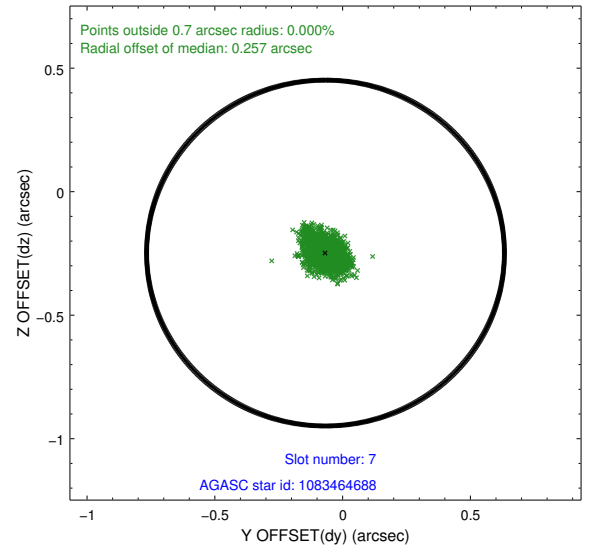
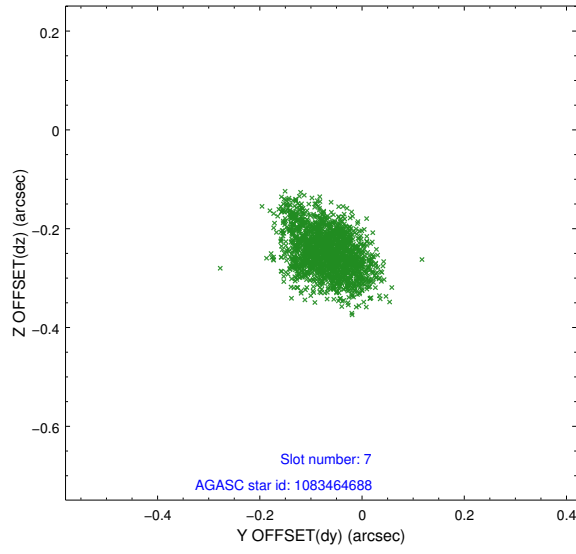


## 2.4.4 Slot 6



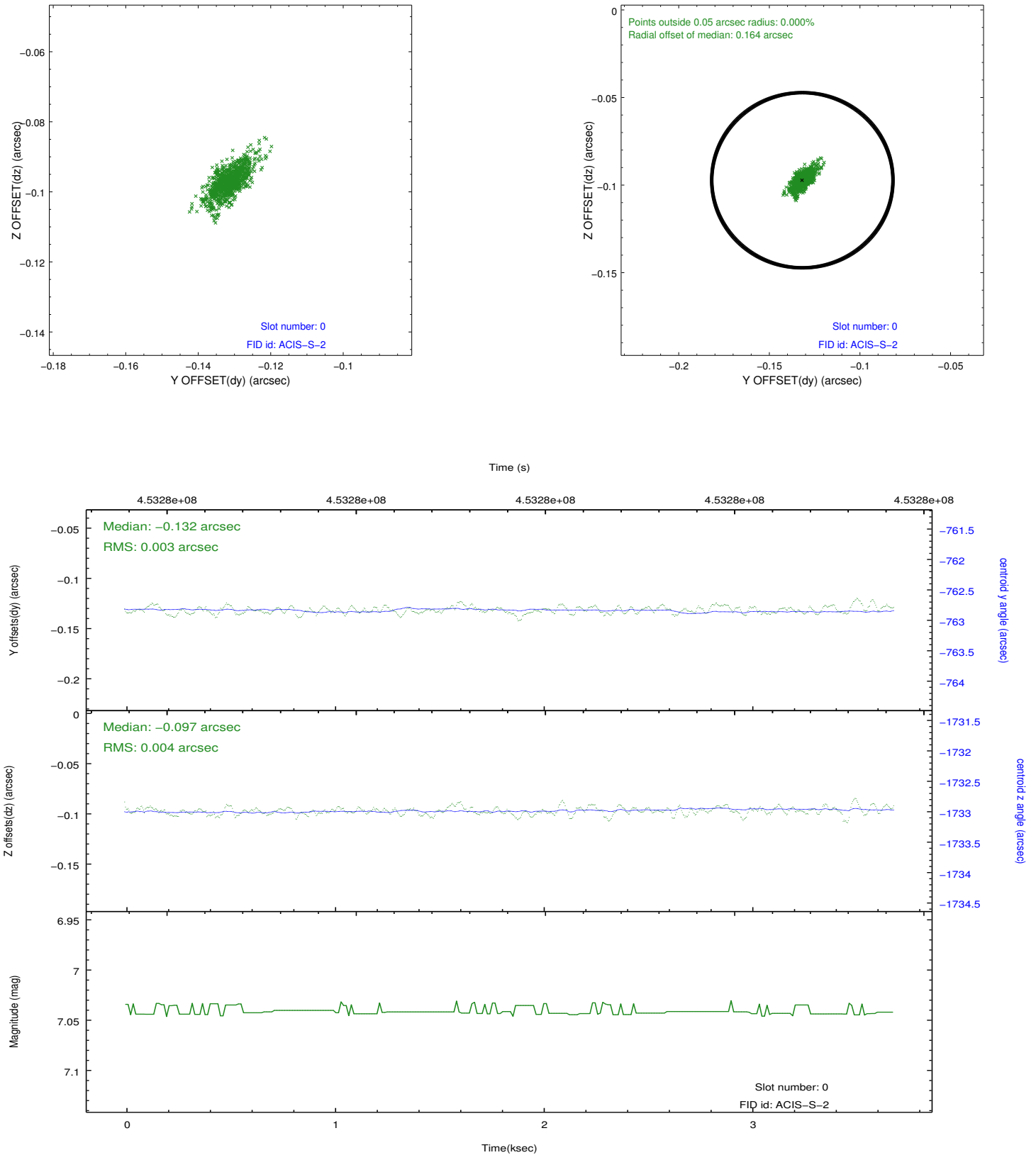


## 2.4.5 Slot 7

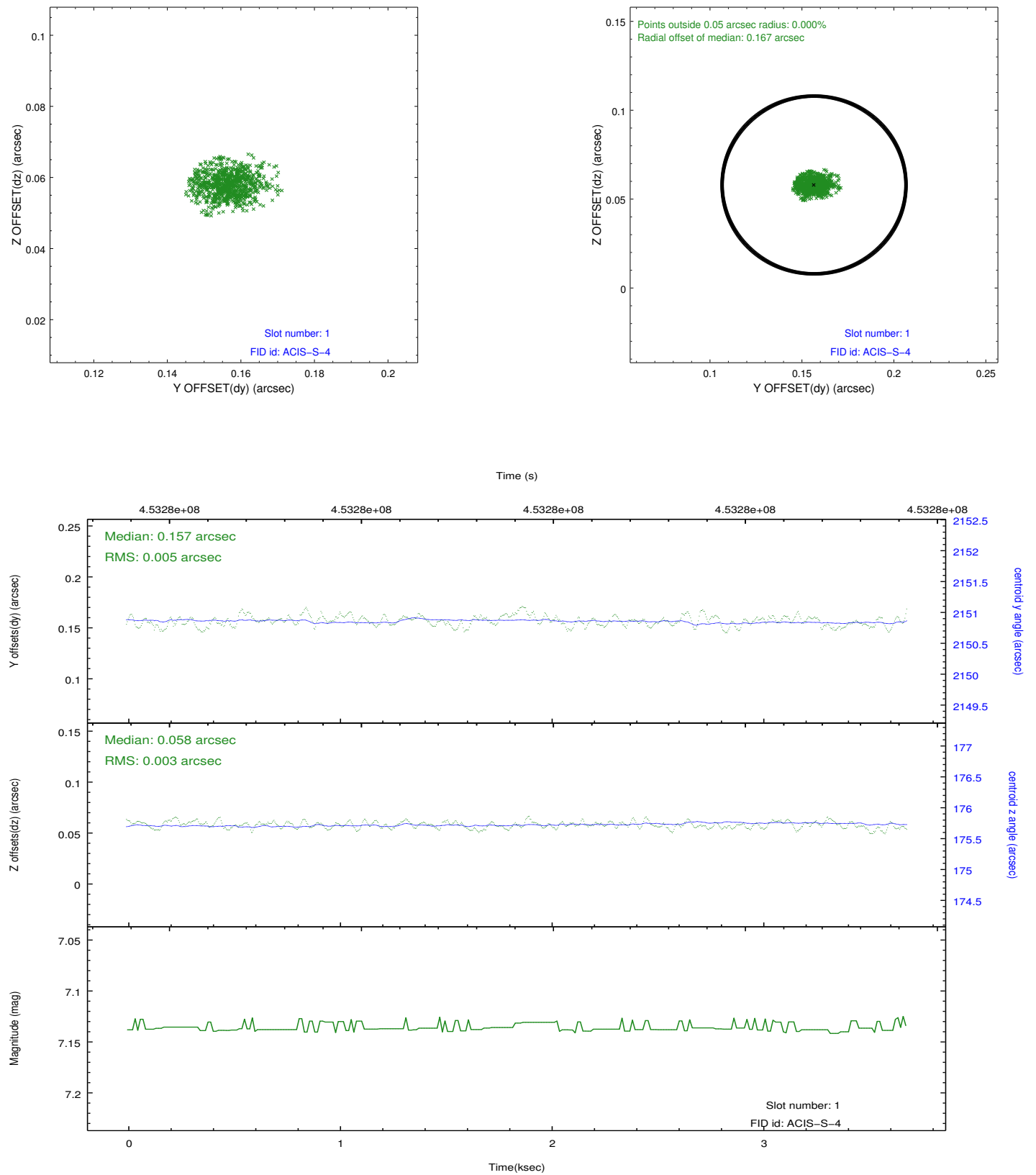


## 2.5 FID Slots

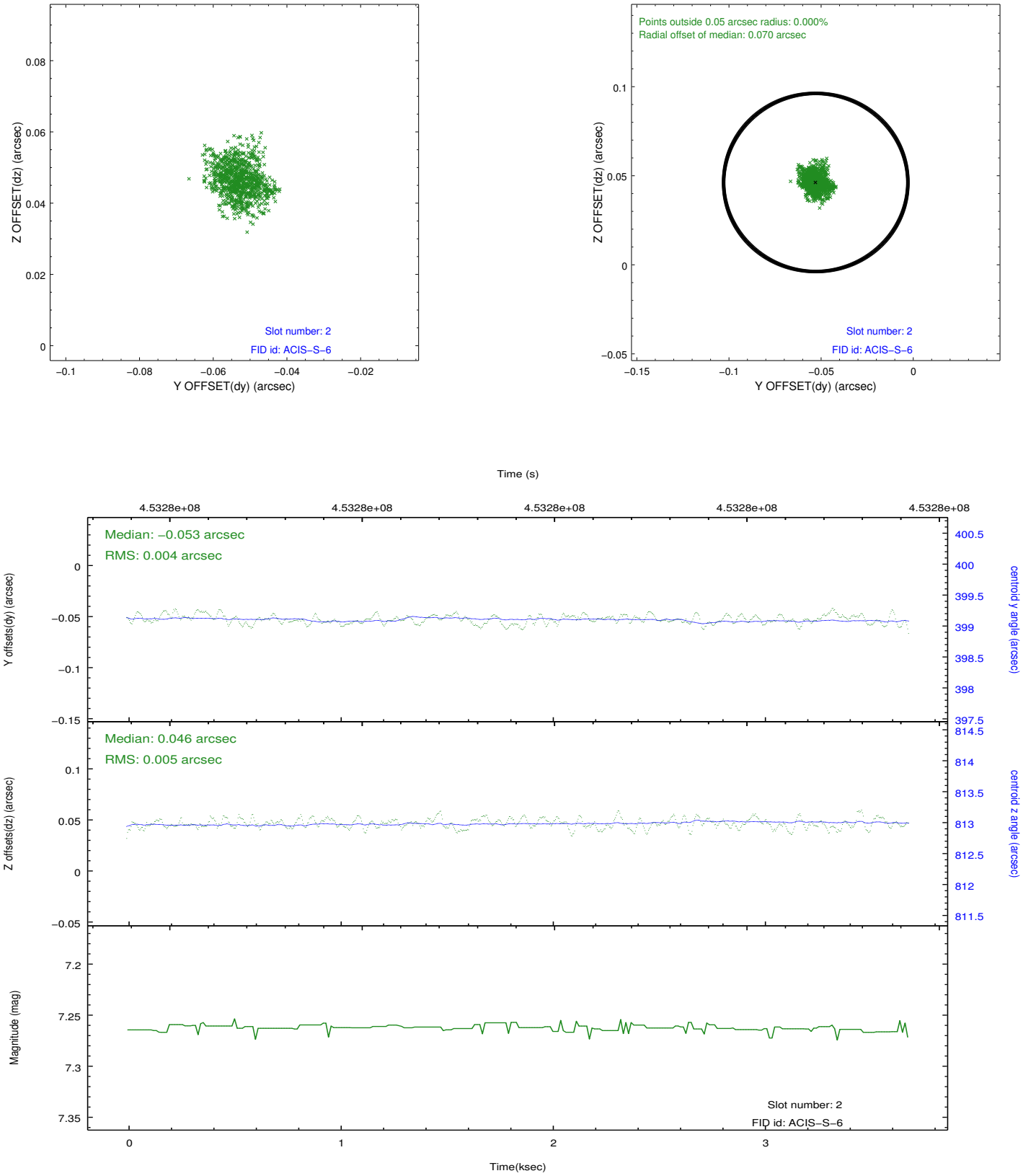
### 2.5.1 Slot 0



## 2.5.2 Slot 1



### 2.5.3 Slot 2



## A Summary

### A.1 Status

V&V Scientist	Jen Lauer
V&V Date (YYYY-MM-DD)	2012.05.13
V&V Edition	1
V&V Disposition and Status	OK
V&V Charge Time	3.4623999871612

### A.2 Comments