

V&V Reference Report

L2 ASCDS Version : 8.4.3

Observation 13379 - L2 Version 2
Chandra X-Ray Center

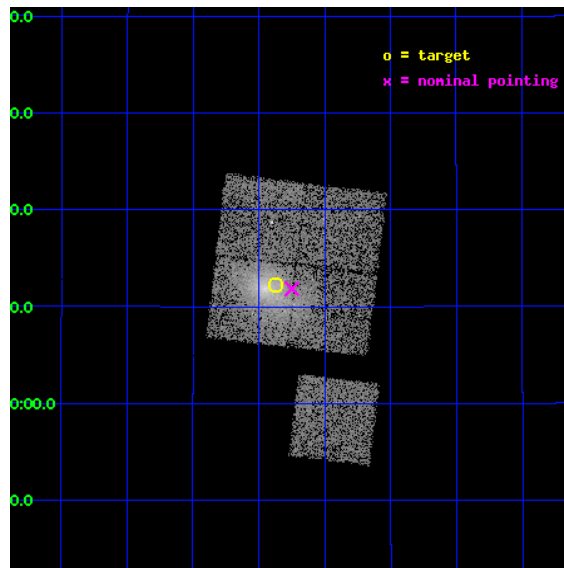
L2 Processing Date : Feb 19 2012

Contents

1	Front	2
2	OBI	3
2.1	OBI	3
2.1.1	Images	3
2.1.2	Bias	3
2.1.3	Parameters	4
2.1.4	Events	4
2.2	Compared Parameters	5
2.3	Aspect	6
2.4	Star Slots	9
2.4.1	Slot 3	9
2.4.2	Slot 4	10
2.4.3	Slot 5	11
2.4.4	Slot 6	12
2.4.5	Slot 7	13
2.5	FID Slots	14
2.5.1	Slot 0	14
2.5.2	Slot 1	15
2.5.3	Slot 2	16
A	Summary	17
A.1	Status	17
A.2	Comments	17

1 Front

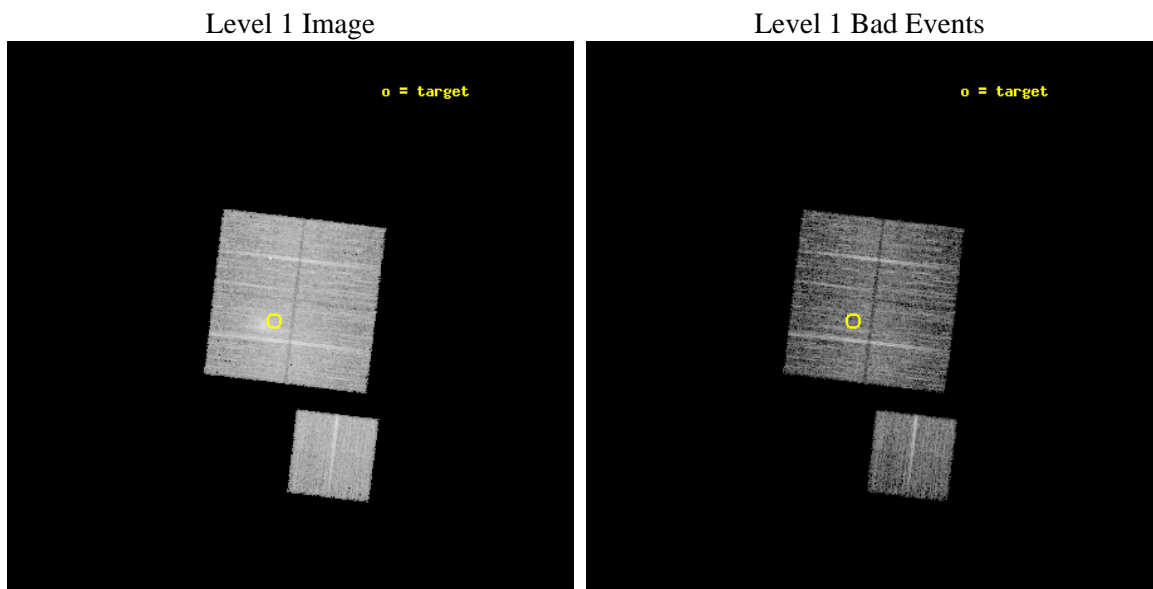
seq_num	801066	Sequence number
obs_id	13379	Observation id
title	Characterizing the Most Massive Clusters in the Local Universe	Pro
observer	Dr Stephen Murray	Principal investigator
object	G072.80-18.72	Source name
dtcycle	0	
cycle	P	events from which exps? Prim/Second/Both
ra_targ	320.59375	Observer's specified target RA [deg]
dec_targ	23.203194	Observer's specified target Dec [deg]
ra_nom	320.56234439412	Nominal RA [deg]
dec_nom	23.197388565979	Nominal Dec [deg]
roll_nom	186.82978610778	Nominal Roll [deg]
revision	2	Processing version of data
ontime	9058.2000696659	Sum of GTIs [s]
livetime	8939.8480172058	Livetime [s]
ontime0	9058.2000696659	Sum of GTIs [s]
ontime1	9055.0590393543	Sum of GTIs [s]
ontime2	9058.2000696659	Sum of GTIs [s]
ontime3	9058.2000696659	Sum of GTIs [s]
ontime6	9058.2000696659	Sum of GTIs [s]
l2events	40261	Number of level 2 events



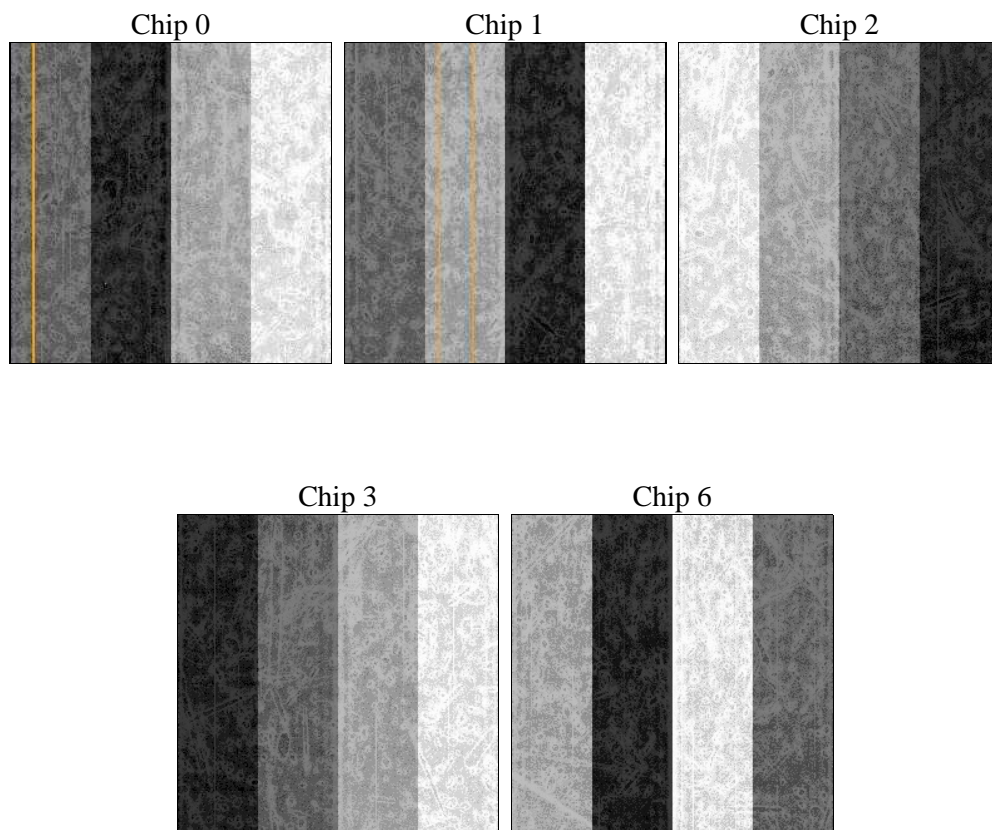
2 OBI

2.1 OBI

2.1.1 Images



2.1.2 Bias



2.1.3 Parameters

obi_num	0	Obi number	sched_exp_time	9000.000000	[s] Scheduled observation exposure time
ascdsver	8.4.3	Processing system revision	ontime	9058.2000696659	Sum of GTIs [s]
caldsver	4.4.8	 	ontime0	9058.2000696659	Sum of GTIs [s]
date	2012-02-19T23:31:16	Date and time of file creation	ontime1	9055.0590393543	Sum of GTIs [s]
revision	2	Processing version of data	ontime2	9058.2000696659	Sum of GTIs [s]
			ontime3	9058.2000696659	Sum of GTIs [s]
			ontime6	9058.2000696659	Sum of GTIs [s]
			l1events	283525	Number of level 1 events

2.1.4 Events

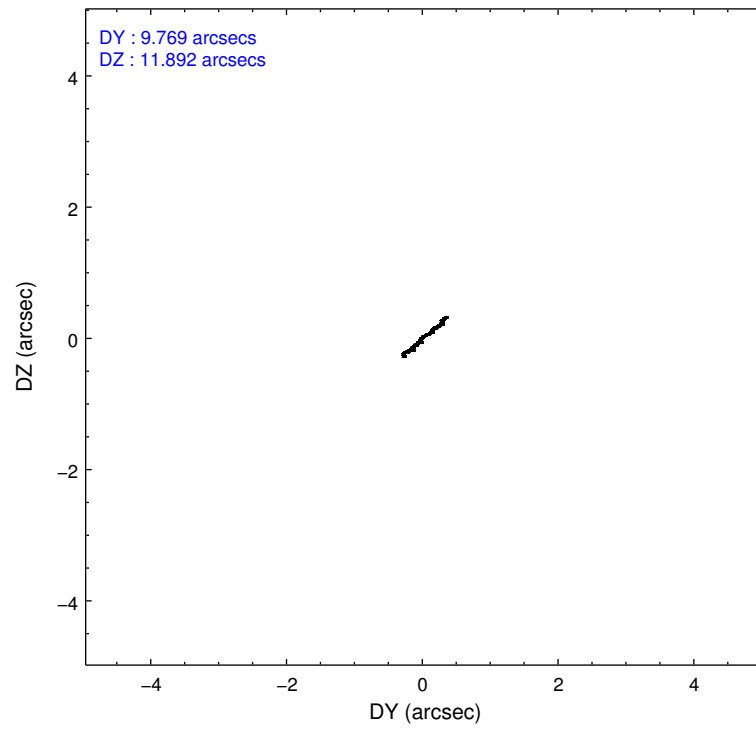
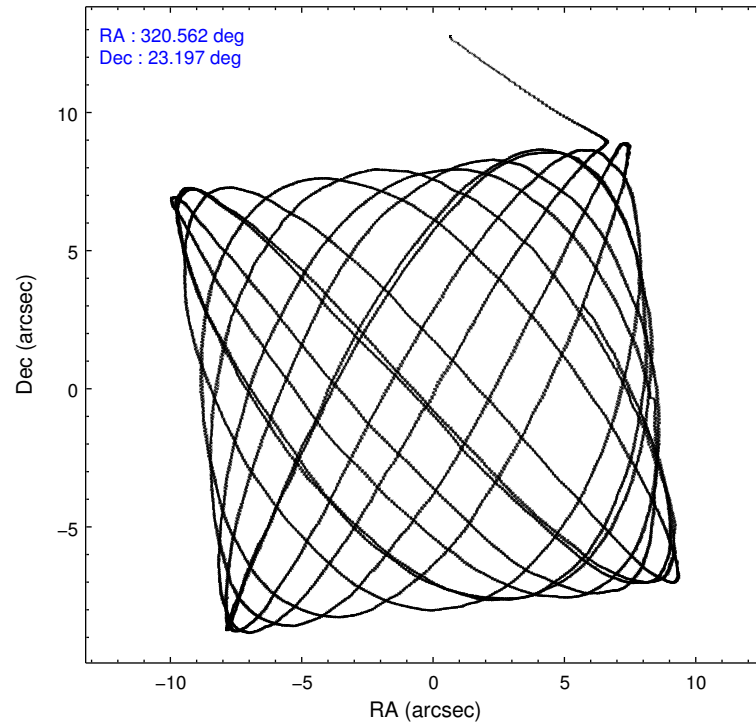
	ccd 0	ccd 1	ccd 2	ccd 3	ccd 6
level 1 events	50756	53698	57959	65998	55114
rejected events	44111	45889	50213	48885	48504
rejected %	86%	85%	86%	74%	88%

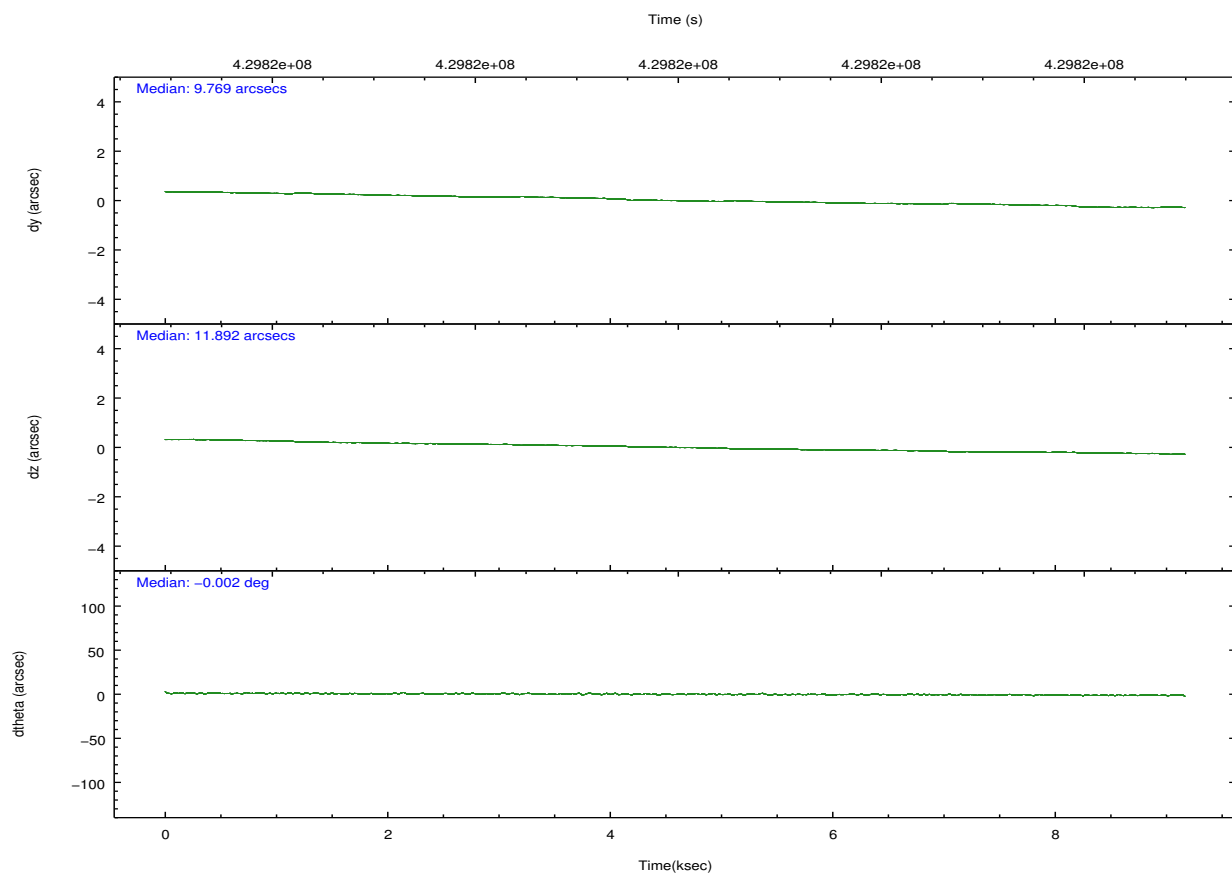
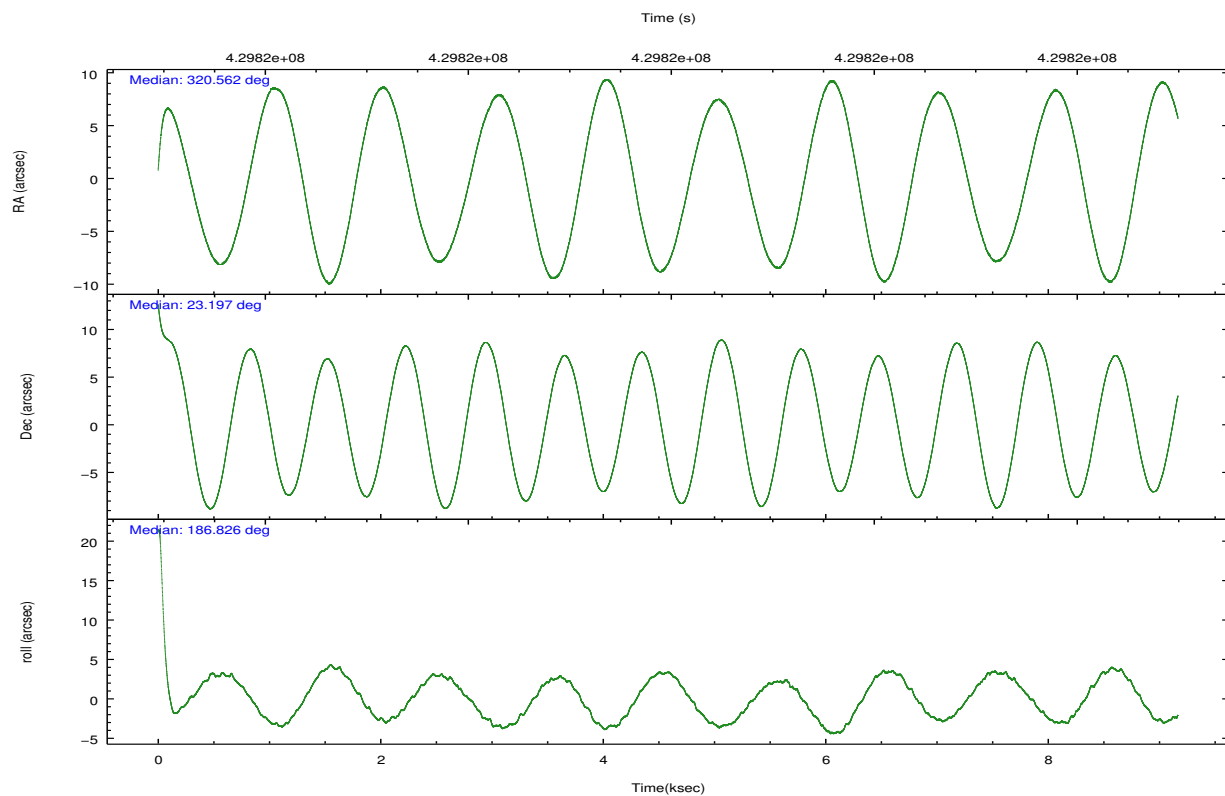
	ccd 0	ccd 1	ccd 2	ccd 3	ccd 6
grade 0 events	2385	3108	3532	10987	2311
	4%	5%	6%	16%	4%
grade 1 events	28	27	45	80	24
	0%	0%	0%	0%	0%
grade 2 events	1578	1686	1624	2459	1451
	3%	3%	2%	3%	2%
grade 3 events	699	806	649	1030	715
	1%	1%	1%	1%	1%
grade 4 events	640	764	693	1062	729
	1%	1%	1%	1%	1%
grade 5 events	2484	2602	2381	2838	2695
	4%	4%	4%	4%	4%
grade 6 events	1348	1449	1249	1579	1407
	2%	2%	2%	2%	2%
grade 7 events	41594	43256	47786	45963	45782
	81%	80%	82%	69%	83%

2.2 Compared Parameters

Parameter	Planned	Actual	Parameter	Planned	Actual
Instrument	ACIS	ACIS	Obspar format version number	7	7
Detector	ACIS-01236	ACIS-01236	Obspar file type	PREDICTED	ACTUAL
Grating	NONE	NONE	Obspar update status	NONE	UPDATED
Data mode	VFAINT	VFAINT	CCD I0 on	Y	Y
Observation mode	POINTING	POINTING	CCD I1 on	Y	Y
[deg] Pointing RA	320.586185	320.5623443941234	CCD I2 on	Y	Y
[deg] Pointing Dec	23.213966	23.1973885659791	CCD I3 on	Y	Y
[deg] Pointing Roll	186.611674	186.8297861077849	CCD S0 on	N	N
[mm] SIM focus pos	-0.782348	-0.7809083437167272	CCD S1 on	N	N
[mm] SIM defocus	0	0.001439871863259334	CCD S2 on	O1	Y
[mm] SIM translation stage pos	-228.092463	-228.0961698422217	CCD S3 on	N	N
[mm] SIM translation stage offset	-5.5	-5.496283160708032	CCD S4 on	N	N
[s] Observation start time (MET)	429815557.184000	429814377.18019	CCD S5 on	N	N
Observation start date	2011-08-15T17:11:31	2011-08-15T16:52:57	Number of optional ACIS chips dropped	0	0
[s] Observation end time (MET)	429824557.184000	429825556.34328	On-chip summing requested	N	N
Observation end date	2011-08-15T19:41:31	2011-08-15T19:59:16	Subarray requested	NONE	NONE
Read mode	TIMED	TIMED	Alternating exposures requested	N	N
			[s] Primary exposure time	0.000000	3.1

2.3 Aspect



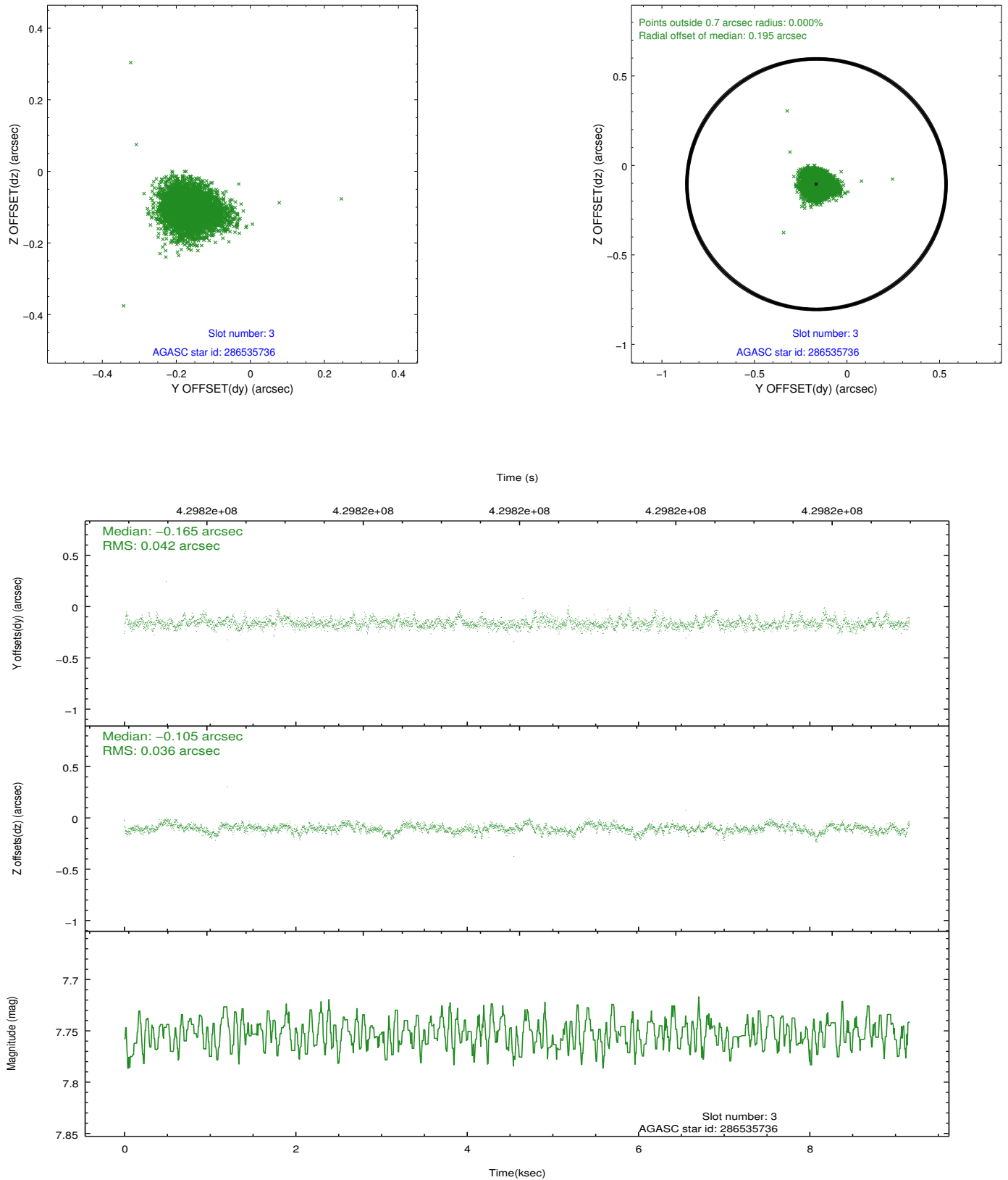


Slot Statistics

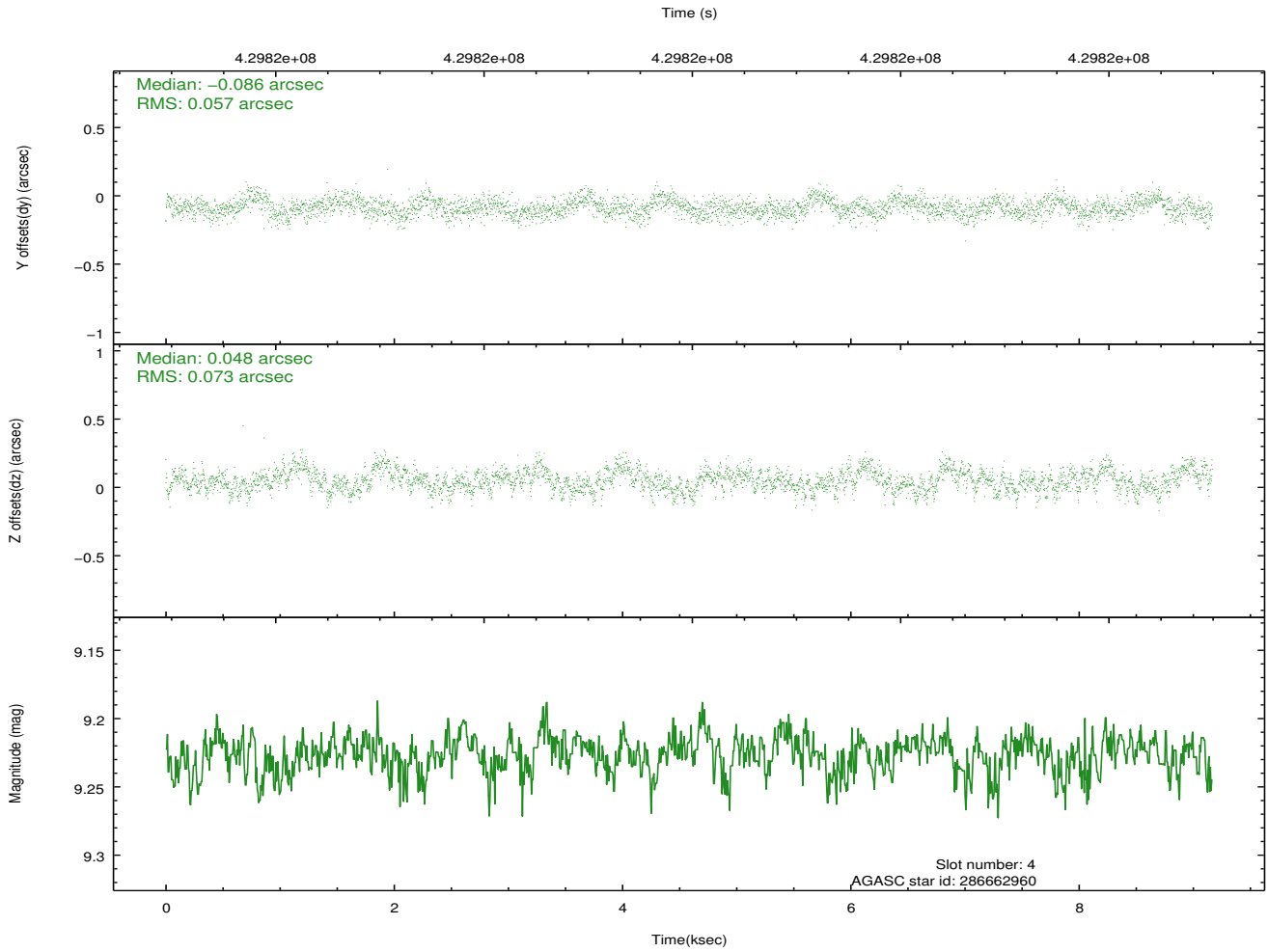
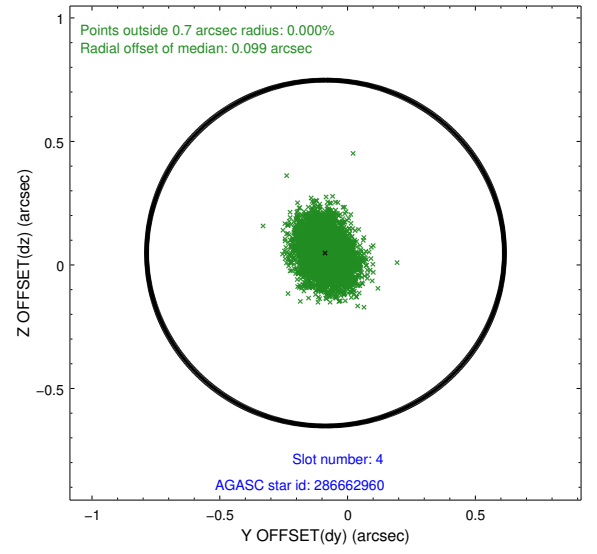
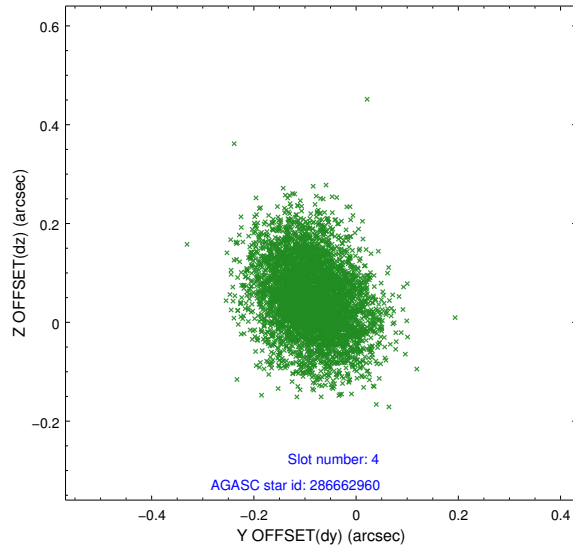
slot	status	id	mag	n_pts	med_dy	med_dz	dr1	dr2	ra	dec	mean_y	mean_z
0	FID	ACIS-I-1	7.04	2236	0.122	-0.087	0.015	0.023	0.000000	0.000000	929.83	-948.31
1	FID	ACIS-I-5	7.03	2236	-0.291	0.096	0.009	0.015	0.000000	0.000000	-1818.37	949.01
2	FID	ACIS-I-6	7.03	2236	0.079	0.061	0.010	0.017	0.000000	0.000000	394.68	1594.16
3	GUIDE	286535736	7.75	4473	-0.165	-0.105	0.057	0.096	319.965925	22.725025	2247.83	1507.11
4	GUIDE	286662960	9.23	4465	-0.086	0.048	0.099	0.160	320.665602	22.869942	-118.40	1261.00
5	GUIDE	286663128	8.07	4472	0.205	0.008	0.073	0.114	320.655166	23.454355	-325.87	-832.08
6	GUIDE	286665848	7.80	4473	-0.108	0.077	0.065	0.104	321.047283	23.727258	-1722.37	-1663.13
7	GUIDE	286668816	9.19	4467	0.152	-0.028	0.108	0.182	320.351059	23.302583	735.61	-407.71

2.4 Star Slots

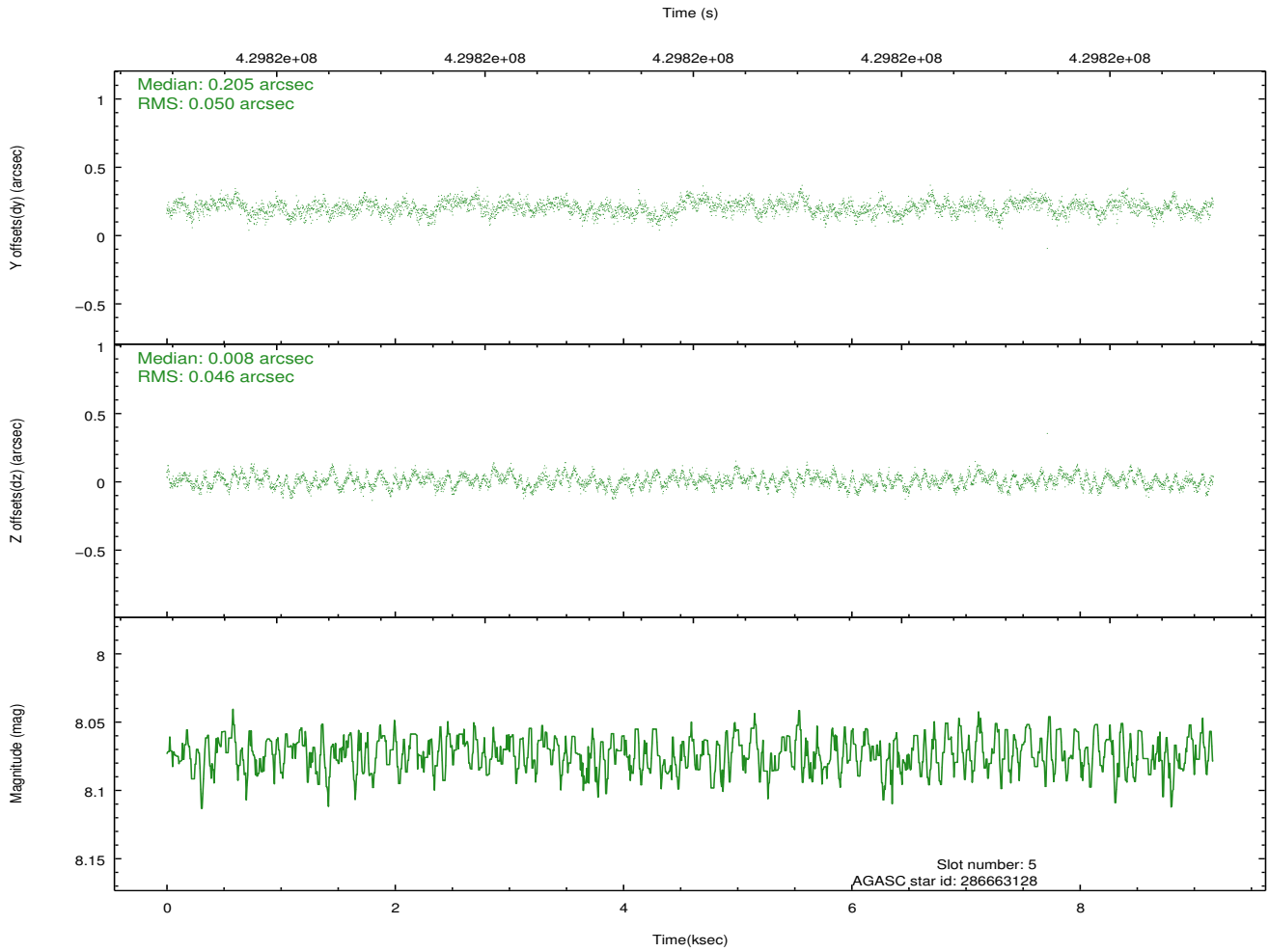
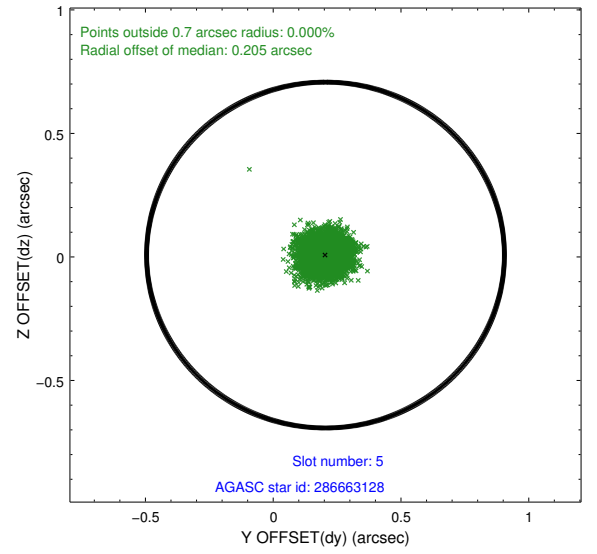
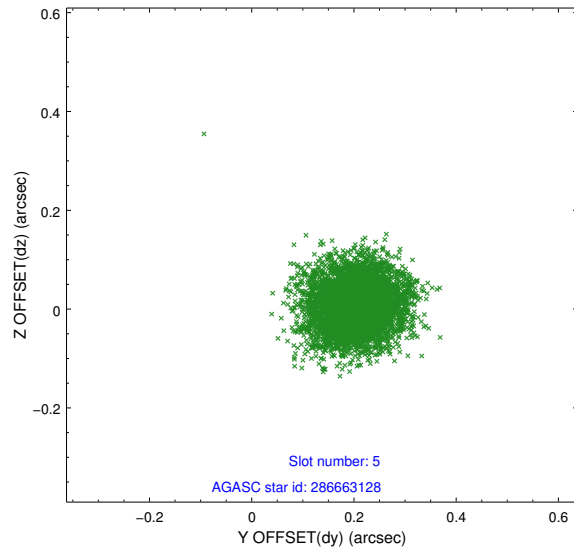
2.4.1 Slot 3



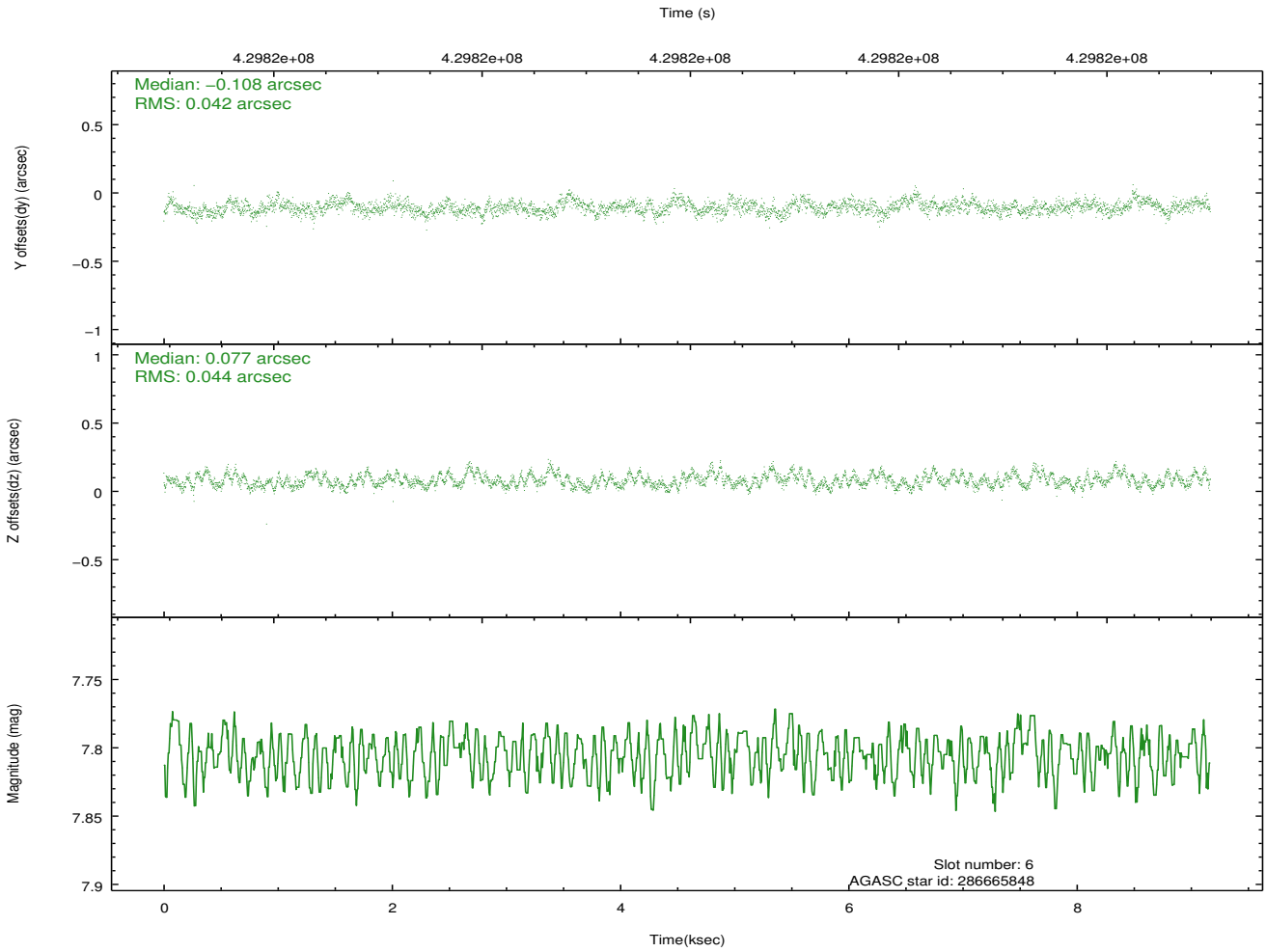
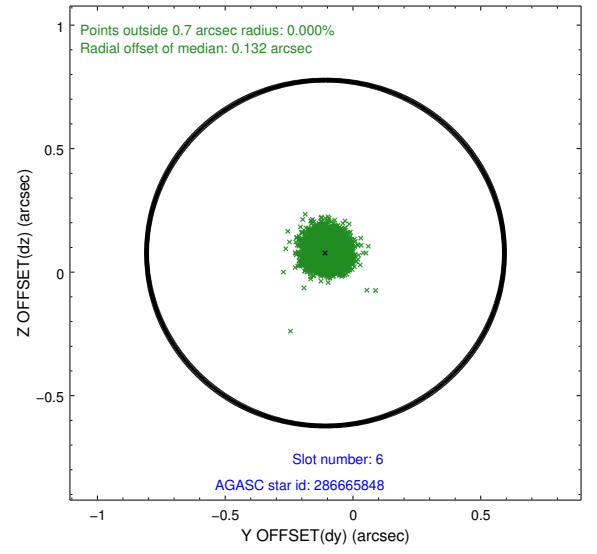
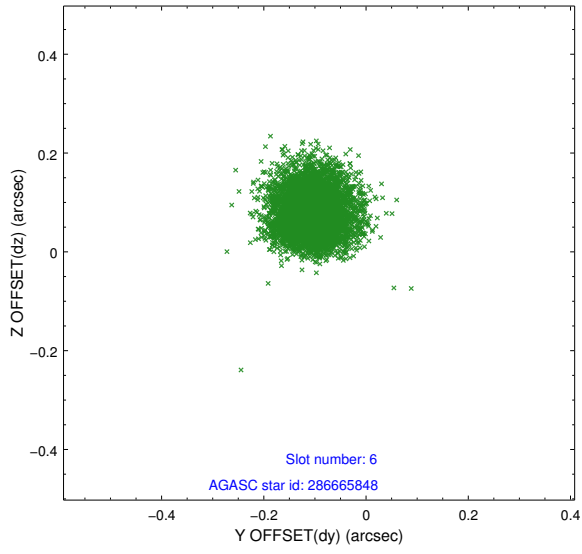
2.4.2 Slot 4



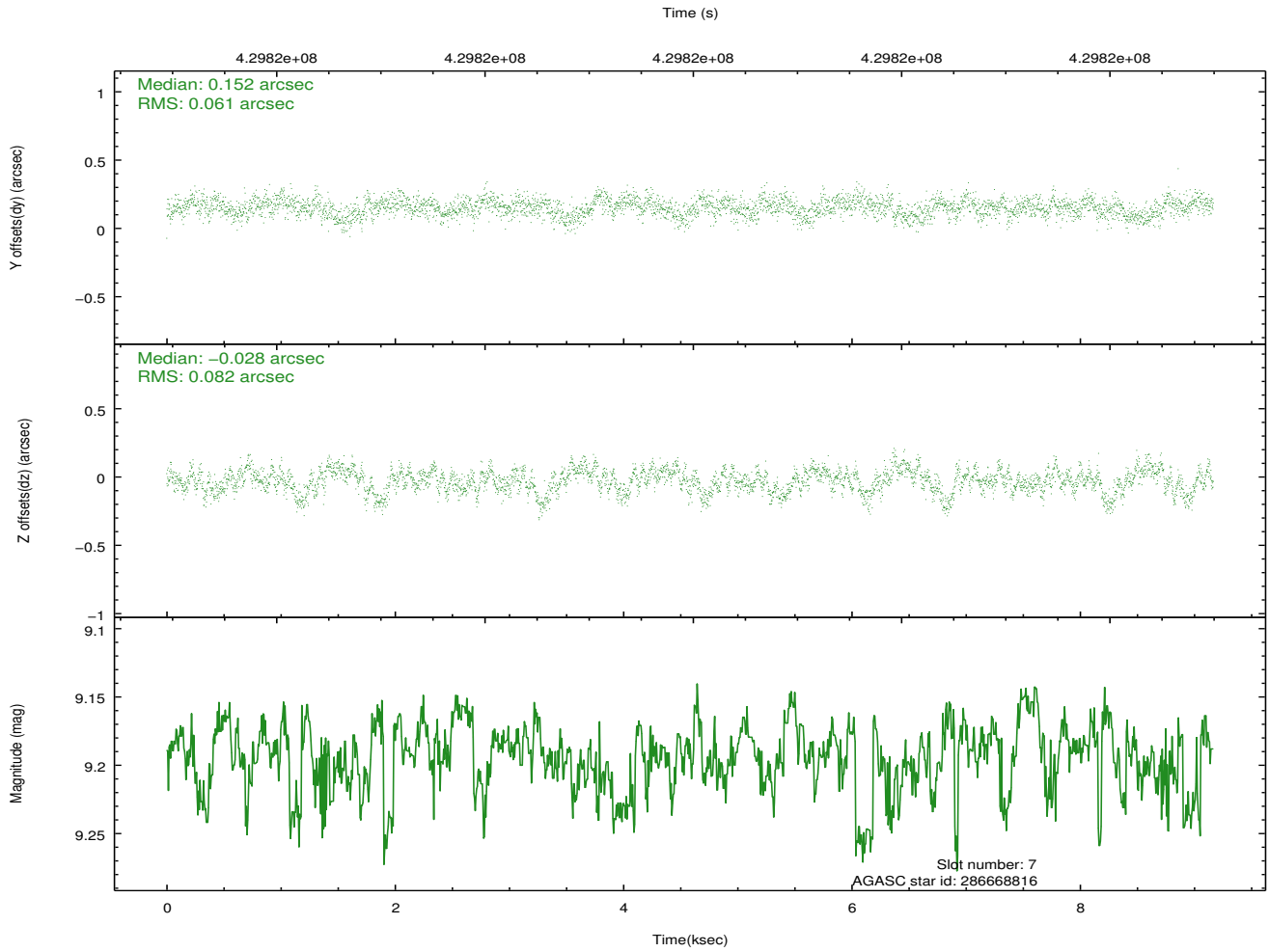
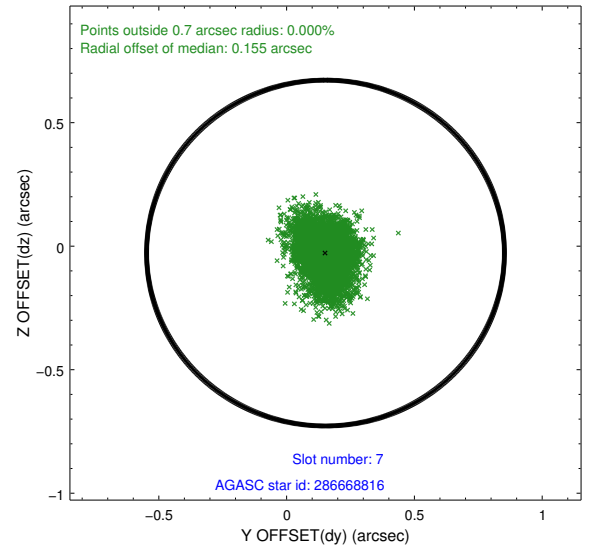
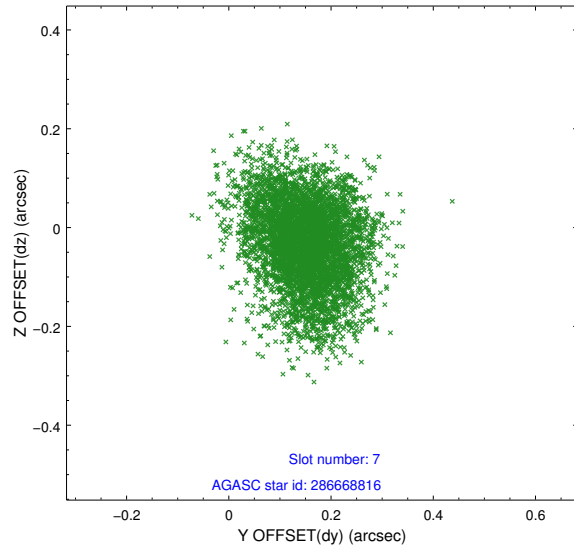
2.4.3 Slot 5



2.4.4 Slot 6

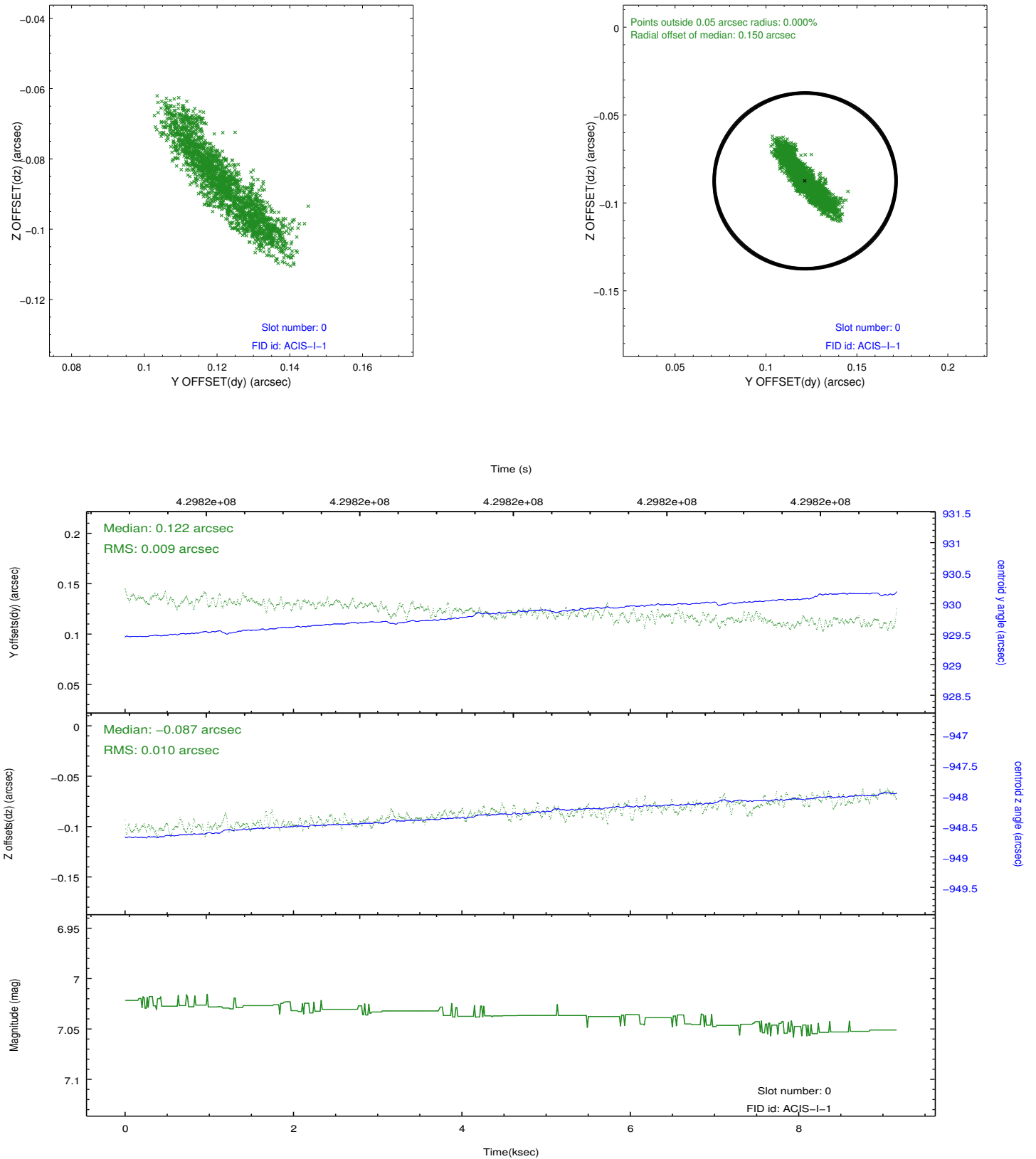


2.4.5 Slot 7

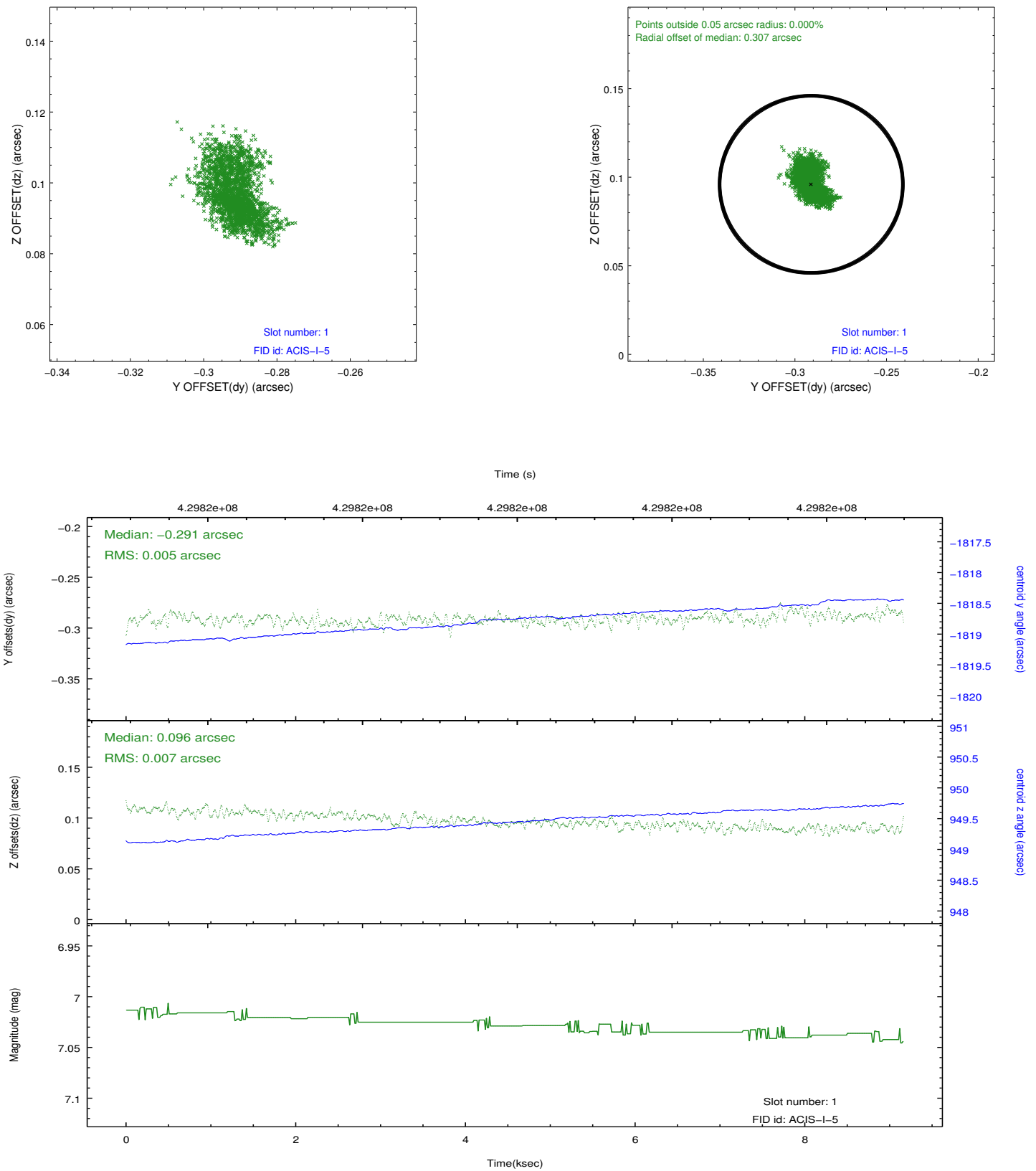


2.5 FID Slots

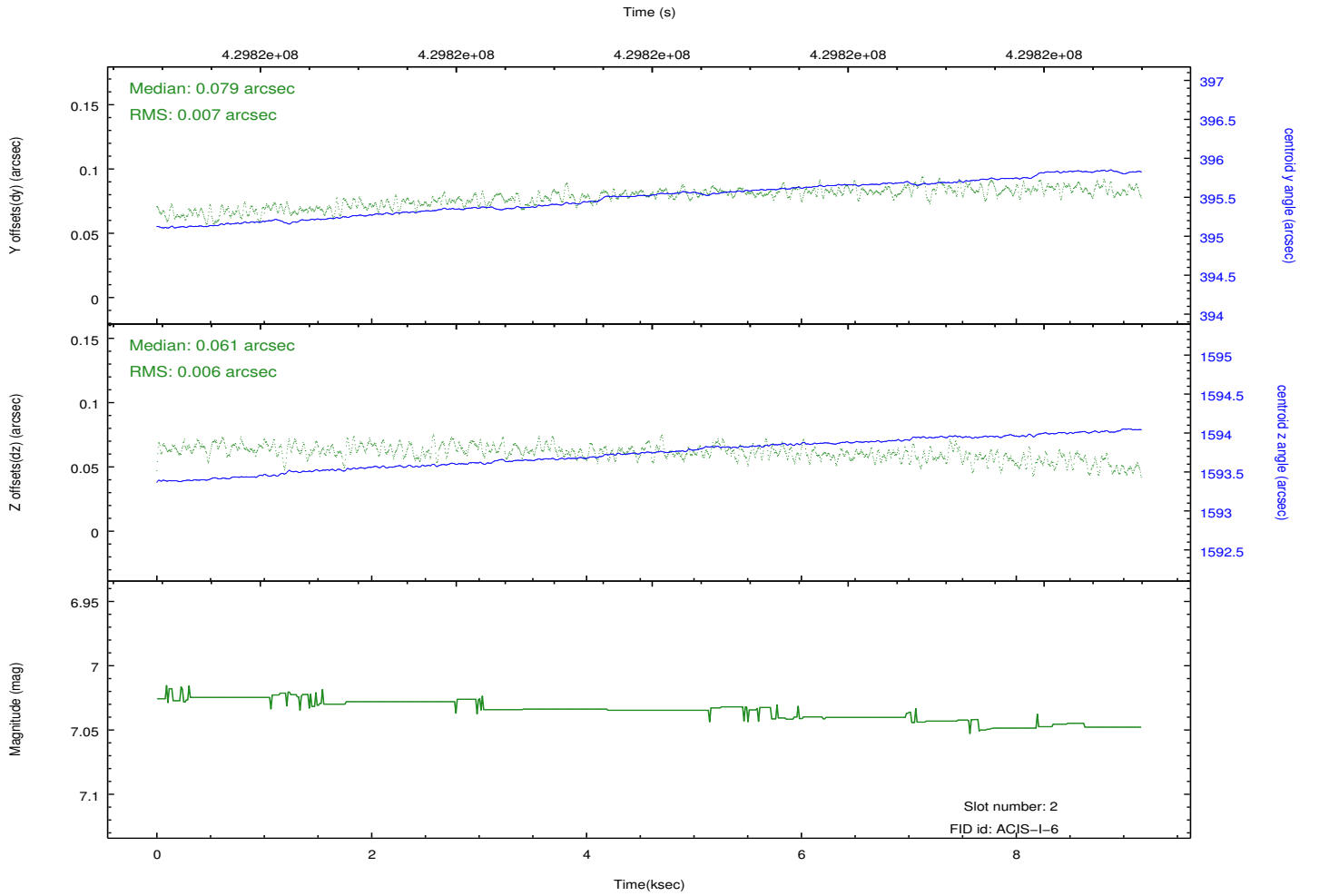
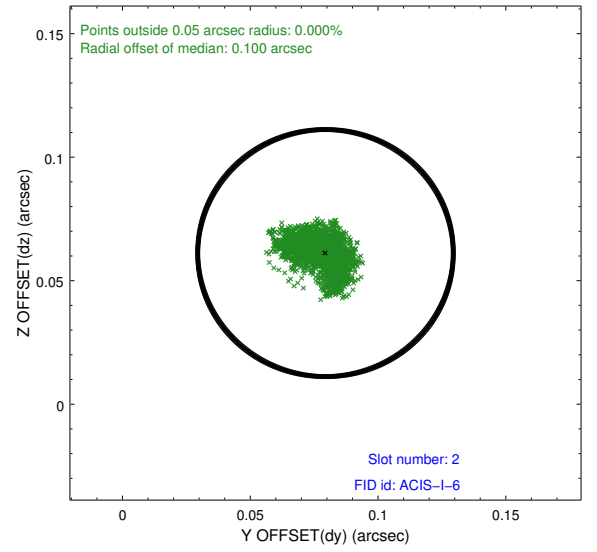
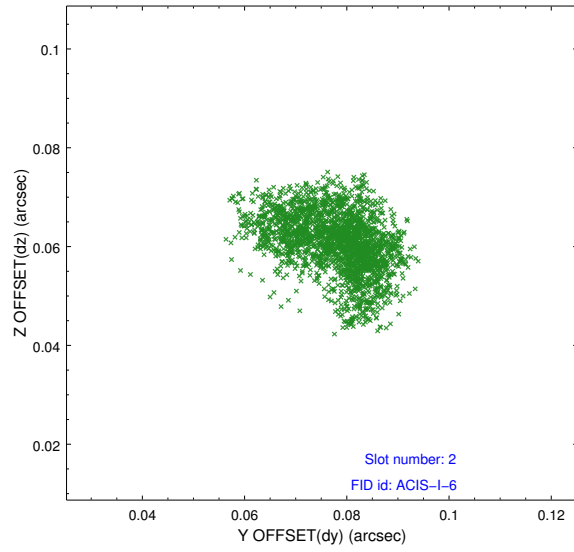
2.5.1 Slot 0



2.5.2 Slot 1



2.5.3 Slot 2



A Summary

A.1 Status

V&V Scientist	Jen Lauer
V&V Date (YYYY-MM-DD)	2012.02.21
V&V Edition	1
V&V Disposition and Status	OK
V&V Charge Time	9.0582000696659

A.2 Comments