

V&V Reference Report

L2 ASCDS Version : 8.4.3

Observation 12549 - L2 Version 1
Chandra X-Ray Center

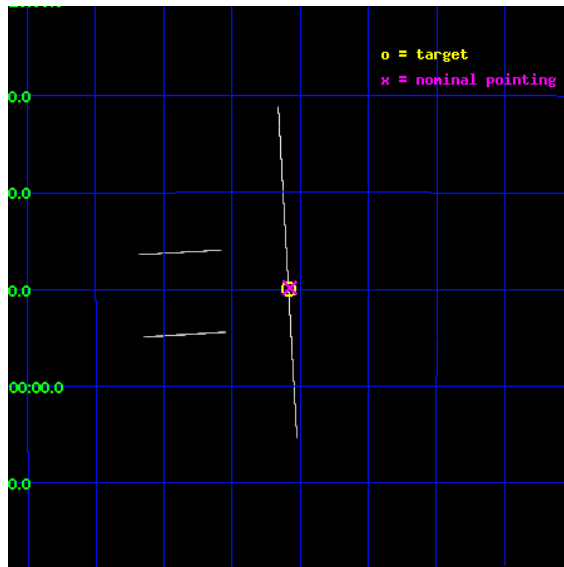
L2 Processing Date : Feb 12 2012

Contents

1	Front	2
2	OBI	3
2.1	OBI	3
2.1.1	Images	3
2.1.2	Bias	3
2.1.3	Parameters	4
2.1.4	Events	4
2.2	Compared Parameters	5
2.3	Aspect	6
2.4	Star Slots	9
2.4.1	Slot 3	9
2.4.2	Slot 4	10
2.4.3	Slot 5	11
2.4.4	Slot 6	12
2.4.5	Slot 7	13
2.5	FID Slots	14
2.5.1	Slot 0	14
2.5.2	Slot 1	15
2.5.3	Slot 2	16
A	Summary	17
A.1	Status	17
A.2	Comments	17

1 Front

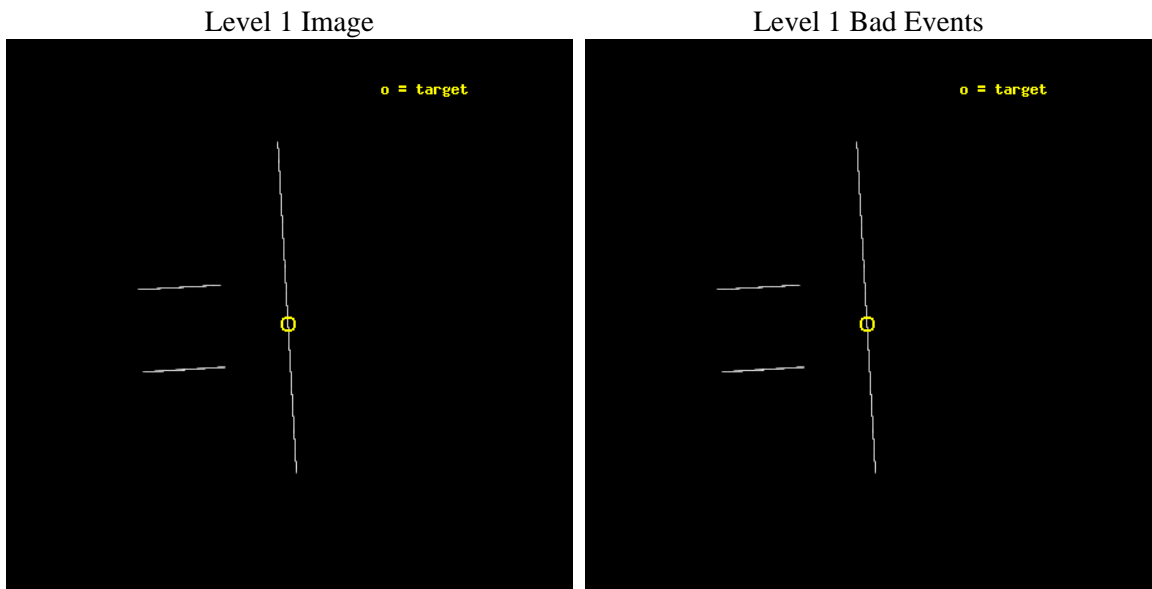
seq_num	501382	Sequence number
obs_id	12549	Observation id
title	Spin-down of the 44 ms Pulsar Powering HESS J1813-178	Proposal tit
observer	Dr Eric Gotthelf	Principal investigator
object	CXO J181335.1-174957	Source name
ra_targ	273.396667	Observer's specified target RA [deg]
dec_targ	-17.832639	Observer's specified target Dec [deg]
ra_nom	273.39407330697	Nominal RA [deg]
dec_nom	-17.830878479717	Nominal Dec [deg]
roll_nom	86.708893031614	Nominal Roll [deg]
revision	1	Processing version of data
ontime	20077.0	Sum of GTIs [s]
livetime	19998.57421875	Livetime [s]
ontime2	20077.0	Sum of GTIs [s]
ontime3	20077.0	Sum of GTIs [s]
ontime5	20077.0	Sum of GTIs [s]
ontime6	20077.0	Sum of GTIs [s]
ontime7	20077.0	Sum of GTIs [s]
ontime8	20077.0	Sum of GTIs [s]
l2events	263013	Number of level 2 events



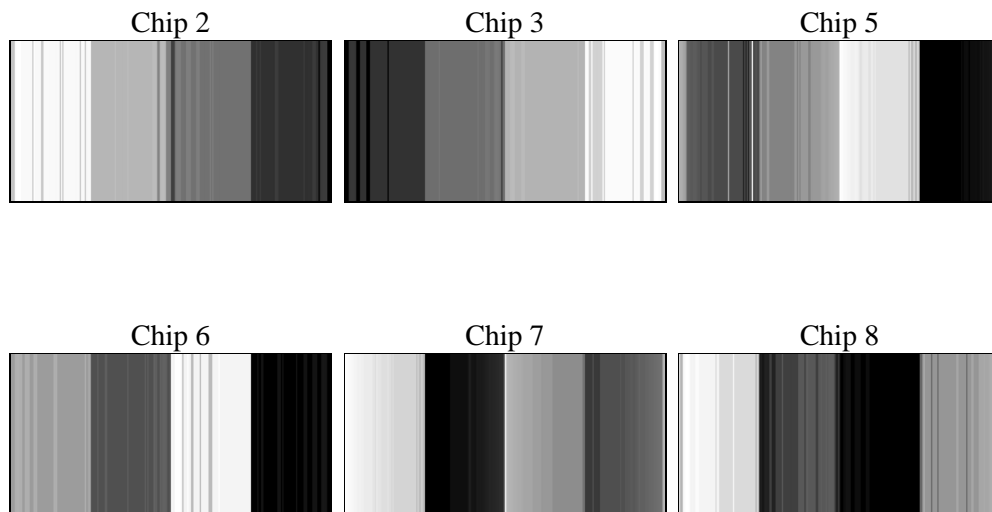
2 OBI

2.1 OBI

2.1.1 Images



2.1.2 Bias



2.1.3 Parameters

obi_num	3	Obi number	sched_exp_time	20000.000000	[s] Scheduled observation exposure time
ascdsver	8.4.3	Processing system revision	ontime	20077.0	Sum of GTIs [s]
caldsver	4.4.7	 	ontime2	20077.0	Sum of GTIs [s]
date	2012-02-12T21:35:52	Date and time of file creation	ontime3	20077.0	Sum of GTIs [s]
revision	1	Processing version of data	ontime5	20077.0	Sum of GTIs [s]
			ontime6	20077.0	Sum of GTIs [s]
			ontime7	20077.0	Sum of GTIs [s]
			ontime8	20077.0	Sum of GTIs [s]
			l1events	1571857	Number of level 1 events

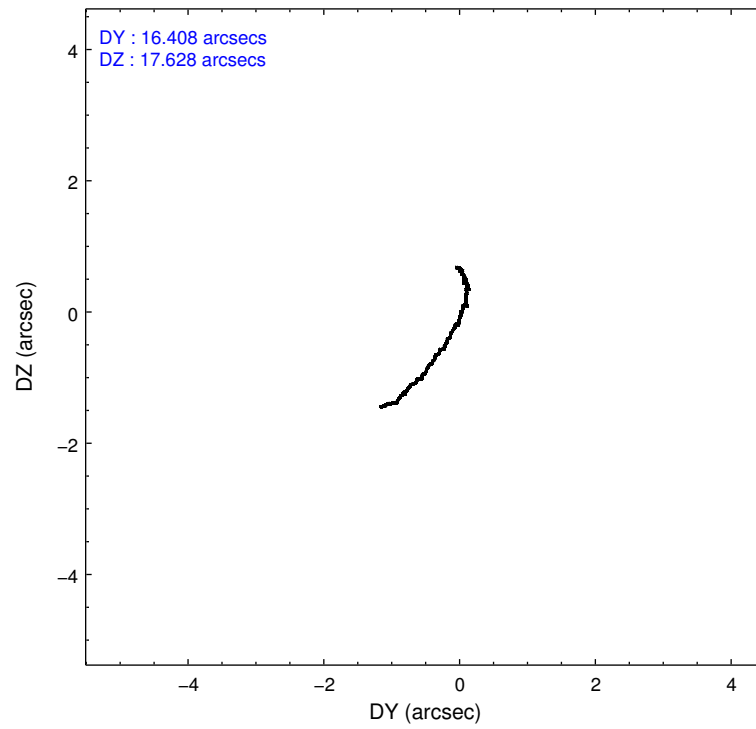
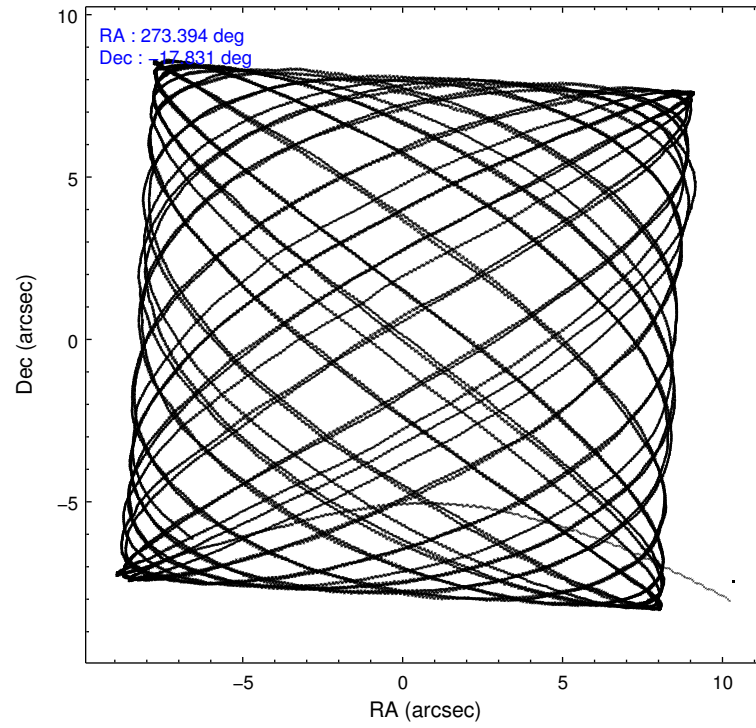
2.1.4 Events

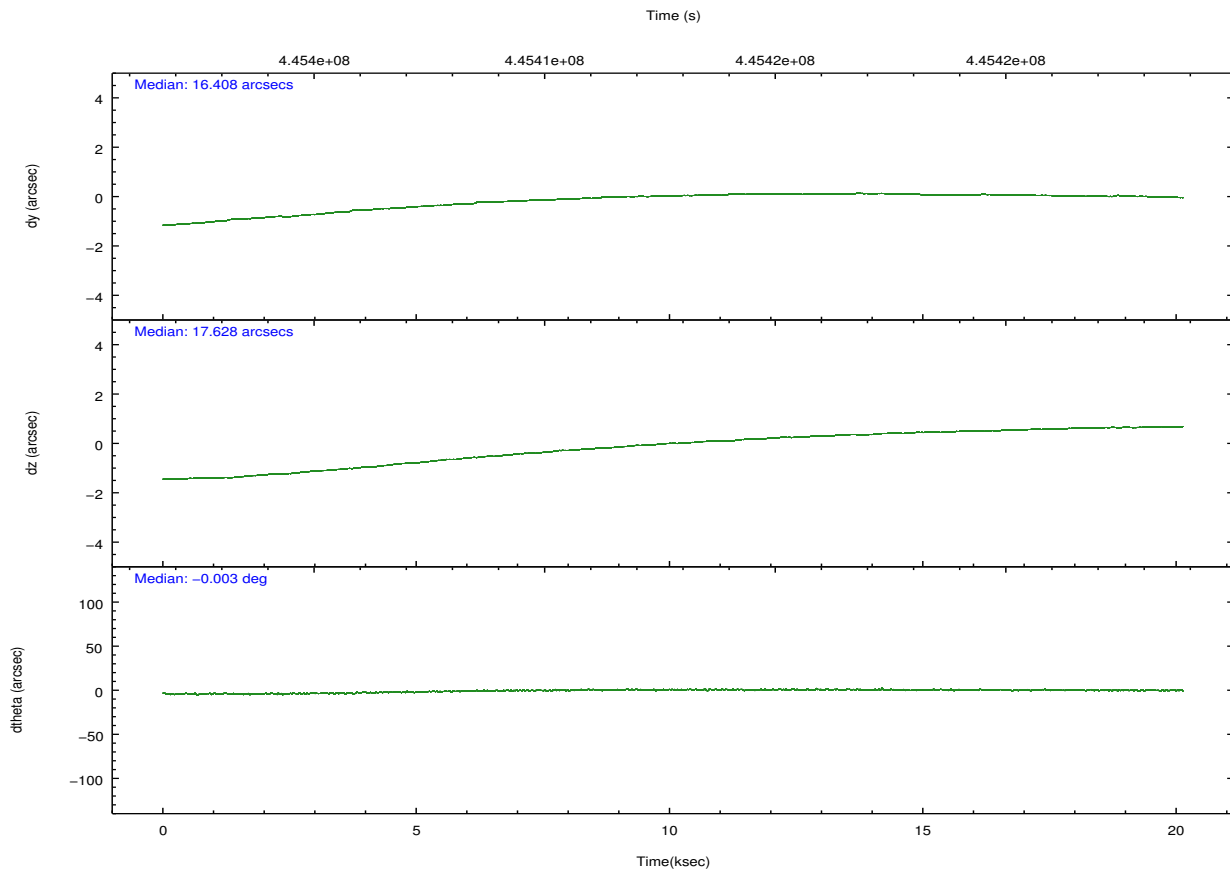
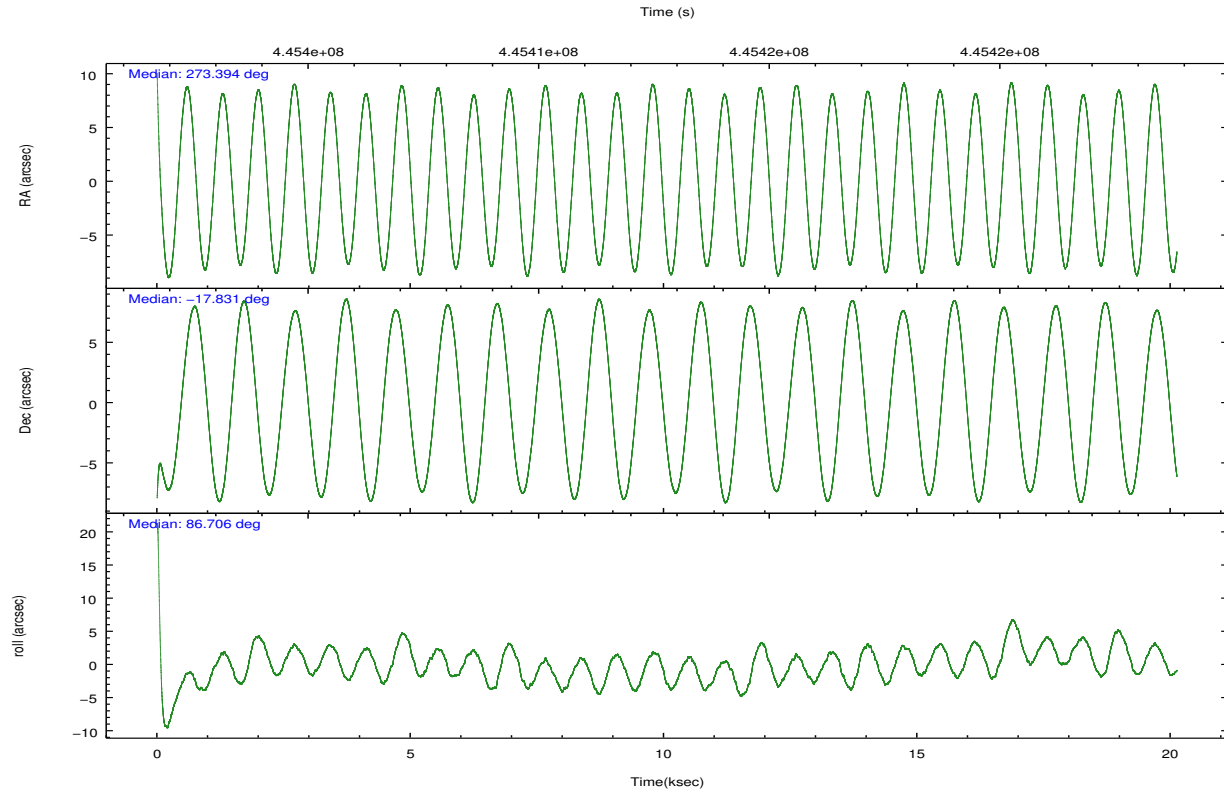
	ccd 2	ccd 3	ccd 5	ccd 6	ccd 7	ccd 8		ccd 2	ccd 3	ccd 5	ccd 6	ccd 7	ccd 8
level 1 events	220352	223056	306155	221309	248917	352068	grade 0 events	2674	2845	33267	2784	7327	13551
rejected events	199633	200154	169623	196666	162828	289937		1%	1%	10%	1%	2%	3%
rejected %	90%	89%	55%	88%	65%	82%	grade 1 events	115	112	282	122	216	245
								0%	0%	0%	0%	0%	0%
							grade 2 events	7916	8688	37924	9992	23188	18914
								3%	3%	12%	4%	9%	5%
							grade 3 events	2671	3212	2485	3035	4898	6822
								1%	1%	0%	1%	1%	1%
							grade 4 events	2666	2841	2395	2810	4829	6501
								1%	1%	0%	1%	1%	1%
							grade 5 events	5607	6189	14149	6374	16206	9131
								2%	2%	4%	2%	6%	2%
							grade 6 events	4795	5318	60480	6030	45877	16350
								2%	2%	19%	2%	18%	4%
							grade 7 events	193908	193851	155173	190162	146376	280554
								87%	86%	50%	85%	58%	79%

2.2 Compared Parameters

Parameter	Planned	Actual	Parameter	Planned	Actual
Instrument	ACIS	ACIS	Obspar format version number	7	7
Detector	ACIS-235678	ACIS-235678	Obspar file type	PREDICTED	ACTUAL
Grating	NONE	NONE	Obspar update status	NONE	UPDATED
Data mode	CC33_FAINT	CC33_FAINT	CCD I0 on	N	N
Observation mode	POINTING	POINTING	CCD I1 on	N	N
[deg] Pointing RA	273.407349	273.3940733069744	CCD I2 on	O3	Y
[deg] Pointing Dec	-17.855119	-17.83087847971714	CCD I3 on	O4	Y
[deg] Pointing Roll	86.556321	86.70889303161431	CCD S0 on	N	N
[mm] SIM focus pos	-0.684267	-0.6828225247311905	CCD S1 on	O1	Y
[mm] SIM defocus	0	0.001444936568705701	CCD S2 on	O5	Y
[mm] SIM translation stage pos	-190.132523	-190.1400660498719	CCD S3 on	Y	Y
[mm] SIM translation stage offset	0	0.00754346686406393	CCD S4 on	O2	Y
[s] Observation start time (MET)	445402855.184000	445401703.4632	CCD S5 on	N	N
Observation start date	2012-02-12T02:59:49	2012-02-12T02:41:43	Number of optional ACIS chips dropped	0	0
[s] Observation end time (MET)	445422855.184000	445423826.03937	On-chip summing requested	N	N
Observation end date	2012-02-12T08:33:09	2012-02-12T08:50:26	Subarray requested	NONE	NONE
Read mode	CONTINUOUS	CONTINUOUS	Alternating exposures requested	N	N
			[s] Primary exposure time	0.000000	0

2.3 Aspect



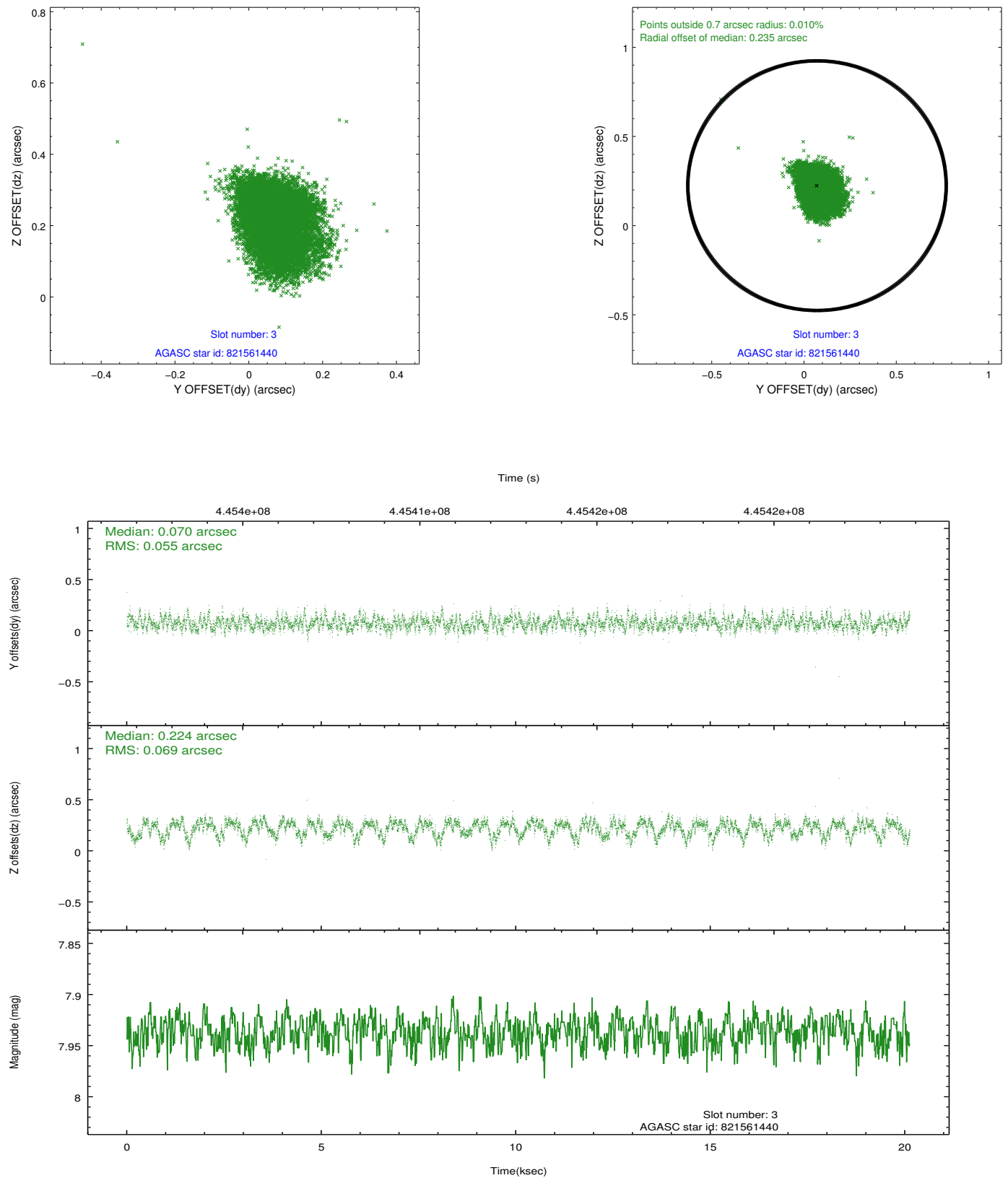


Slot Statistics

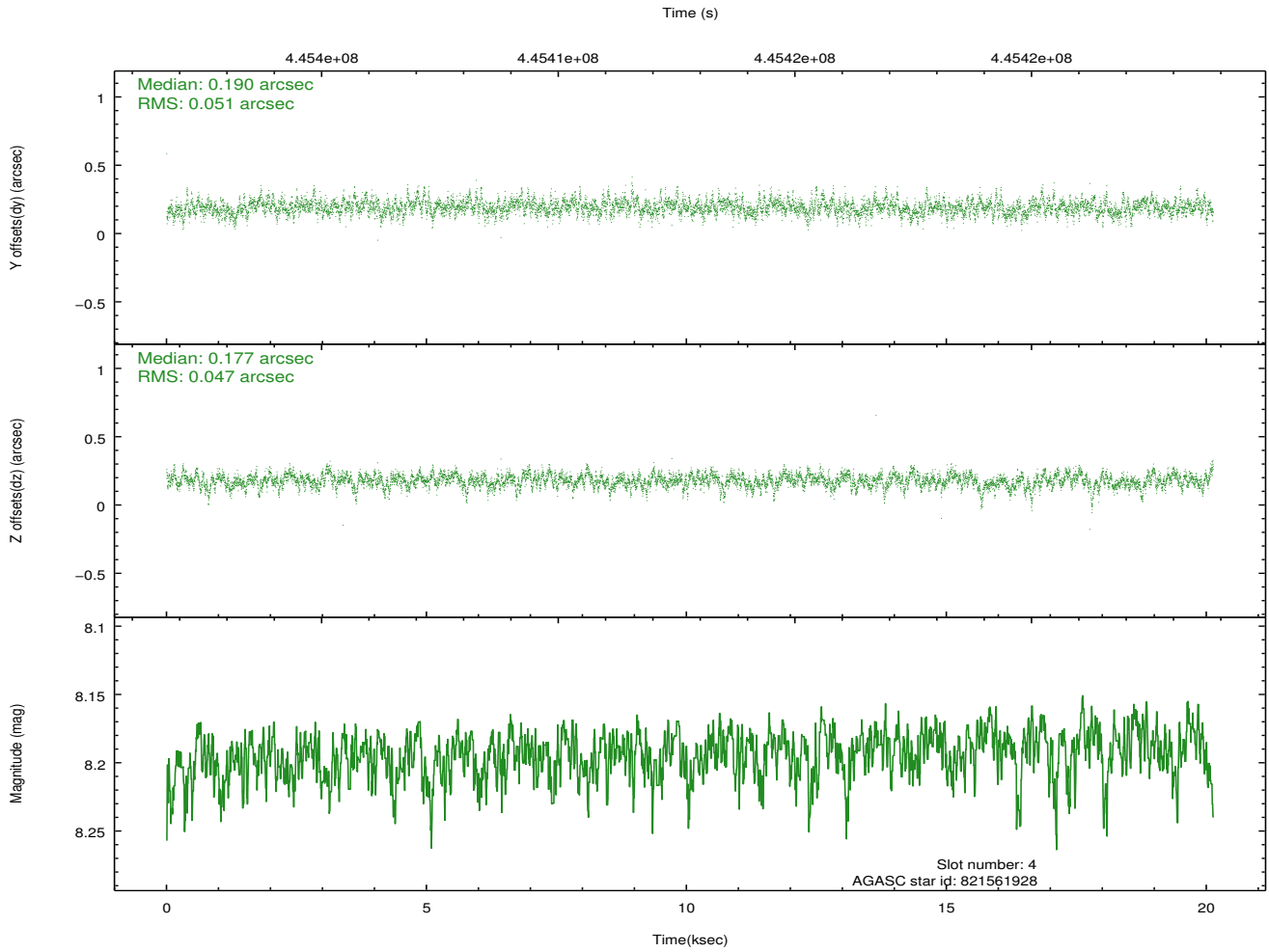
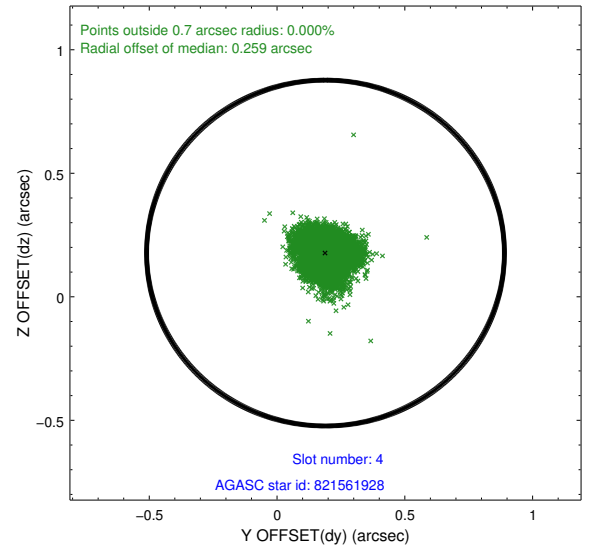
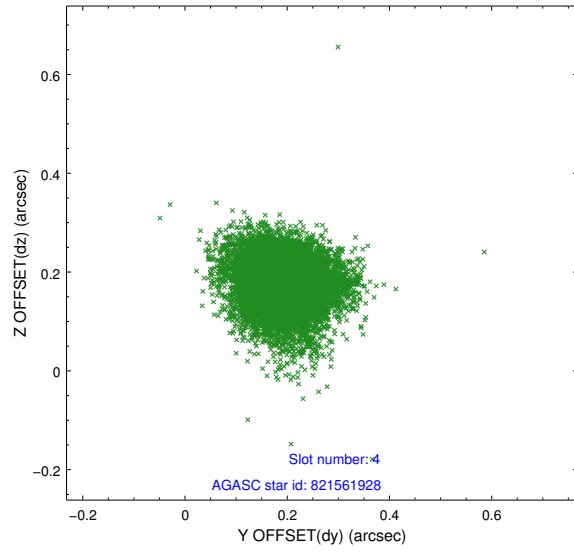
slot	status	id	mag	n_pts	med_dy	med_dz	dr1	dr2	ra	dec	mean_y	mean_z
0	FID	ACIS-S-4	6.99	4910	0.161	-0.000	0.011	0.019	0.000000	0.000000	2144.30	169.73
1	FID	ACIS-S-5	7.03	4910	-0.164	0.008	0.012	0.030	0.000000	0.000000	-1821.98	163.30
2	FID	ACIS-S-6	7.12	4910	-0.026	0.007	0.017	0.038	0.000000	0.000000	392.18	807.01
3	GUIDE	821561440	7.94	9818	0.070	0.224	0.092	0.155	273.991252	-17.607934	1006.03	-1946.33
4	GUIDE	821561928	8.19	9815	0.190	0.177	0.071	0.124	273.412393	-18.388173	-1913.86	-132.48
5	GUIDE	821570064	6.61	9820	-0.423	-0.389	0.055	0.087	273.185111	-17.414521	1536.66	857.06
6	GUIDE	821567792	9.05	9759	-0.217	-0.243	0.088	0.142	273.058733	-17.376535	1647.00	1299.08
7	GUIDE	821567400	8.80	9808	0.375	0.242	0.093	0.151	273.978873	-18.433563	-1963.50	-2073.36

2.4 Star Slots

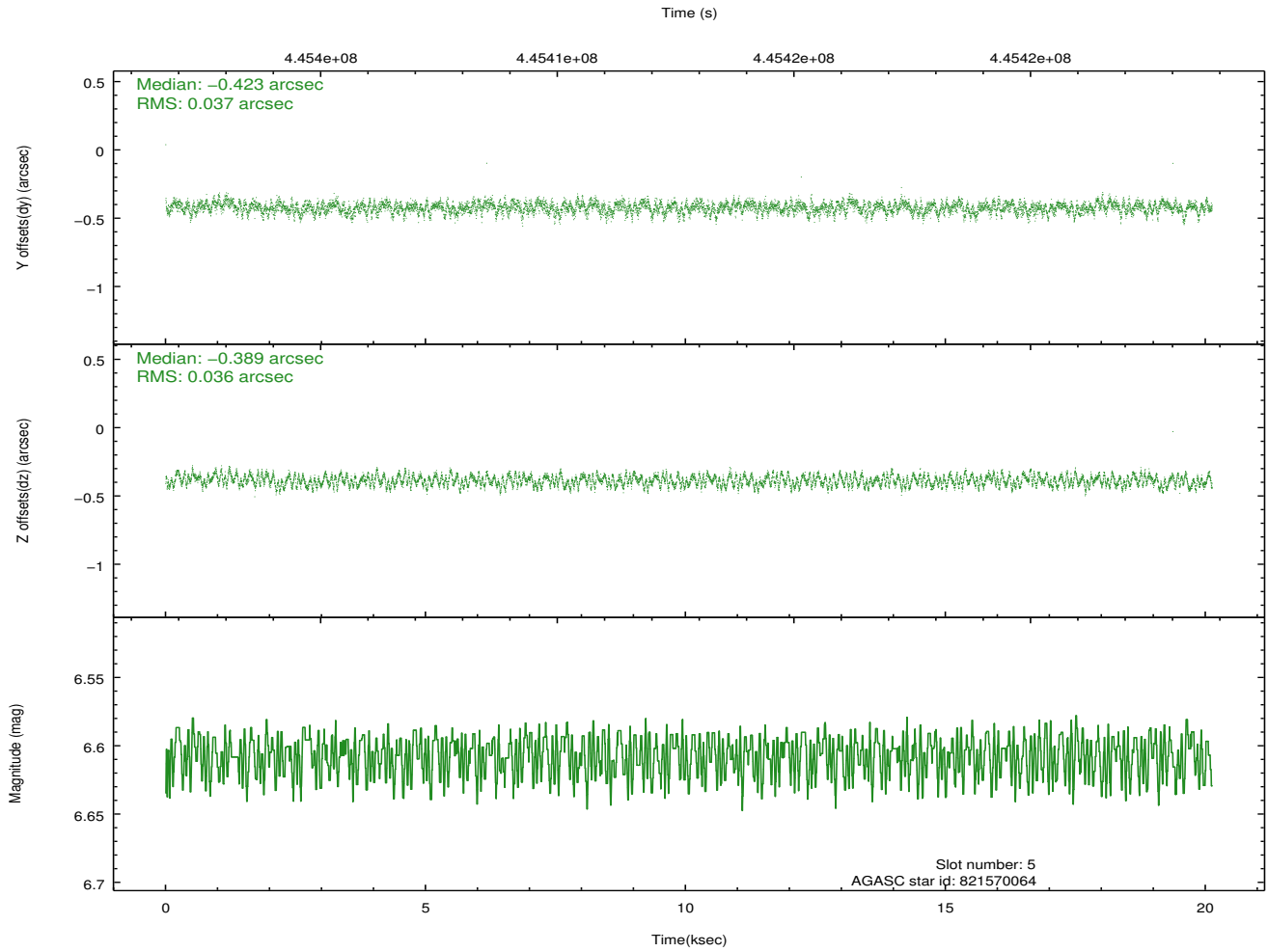
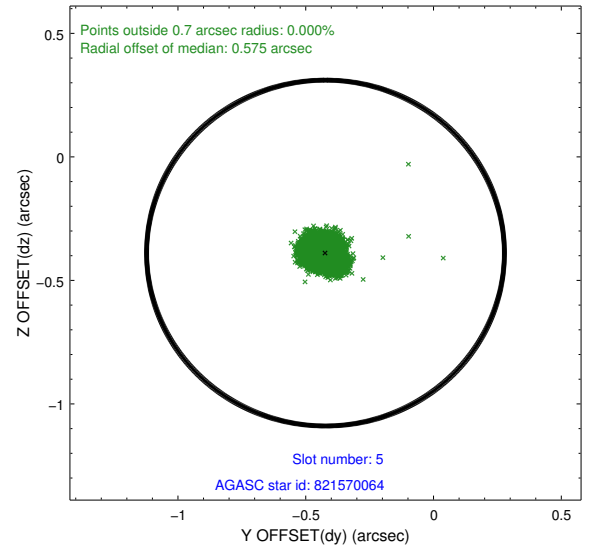
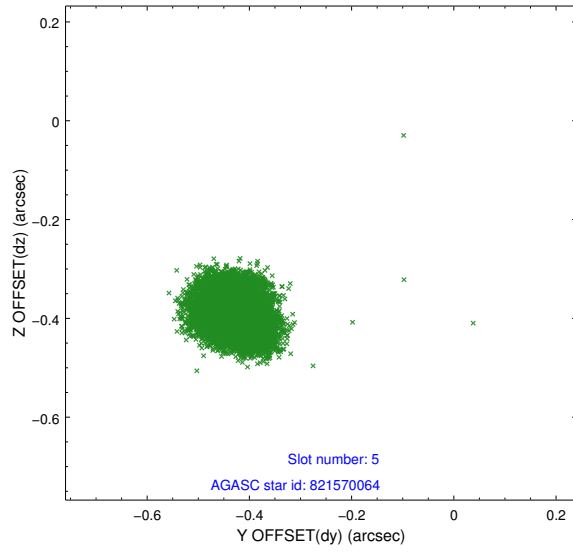
2.4.1 Slot 3



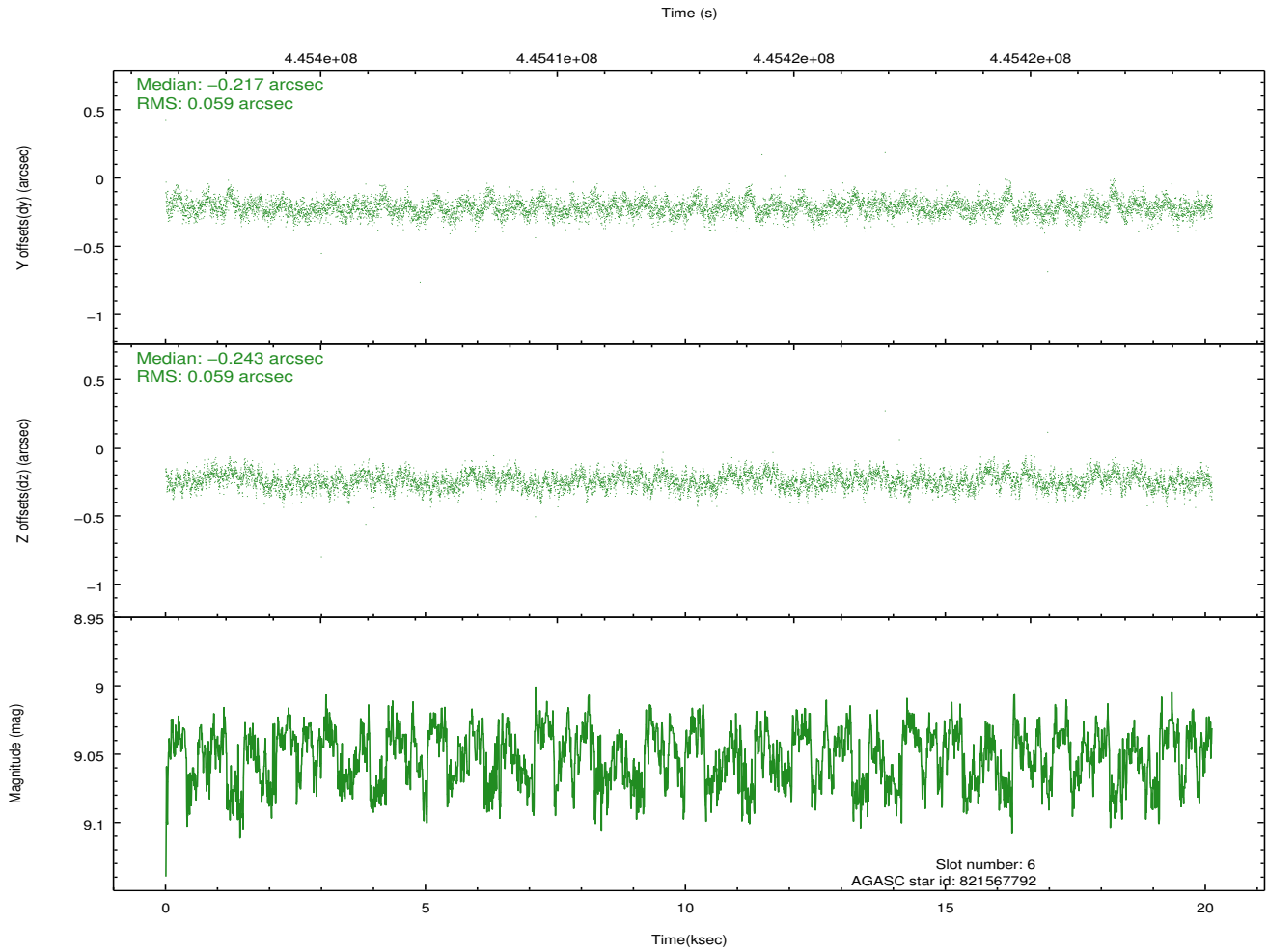
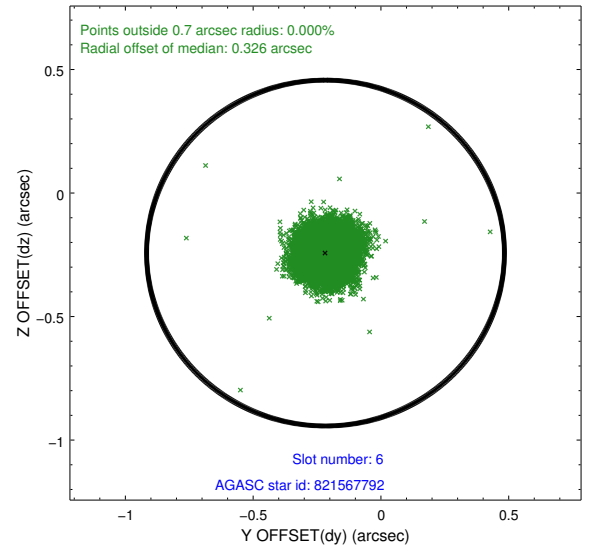
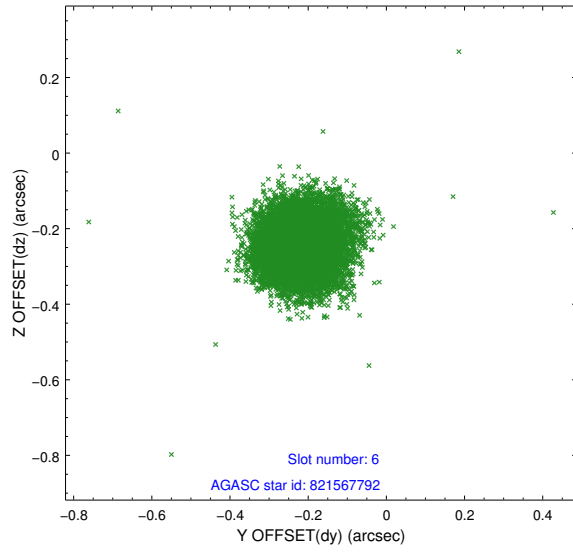
2.4.2 Slot 4



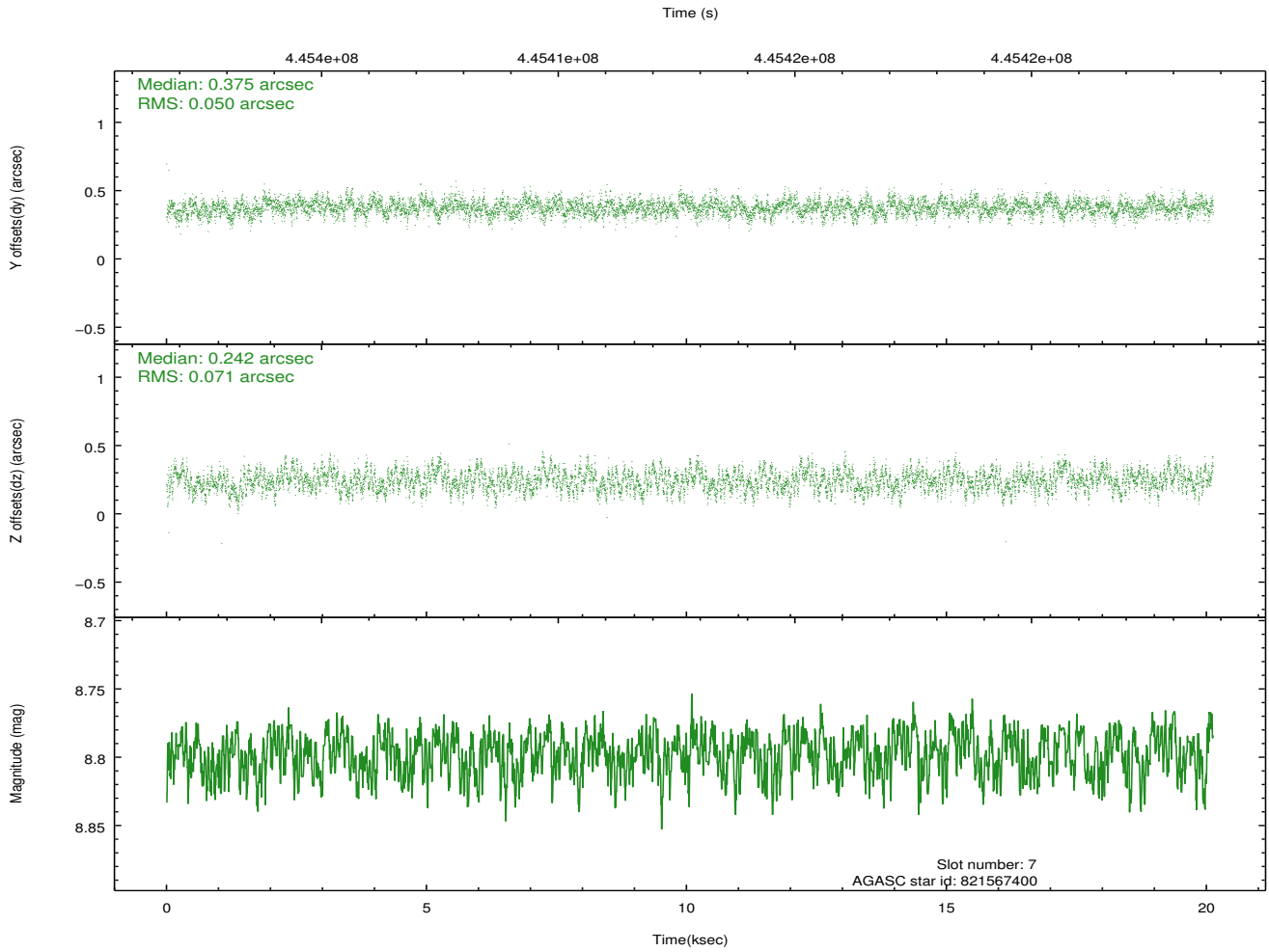
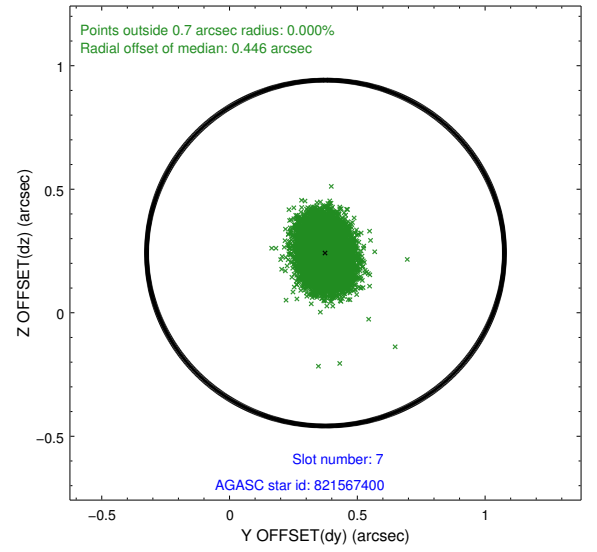
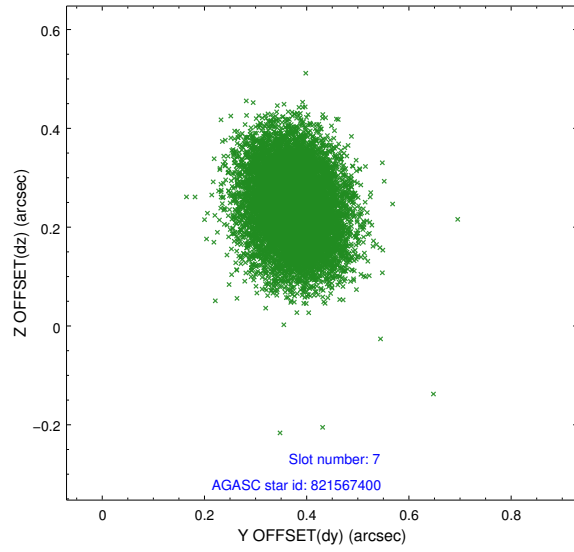
2.4.3 Slot 5



2.4.4 Slot 6

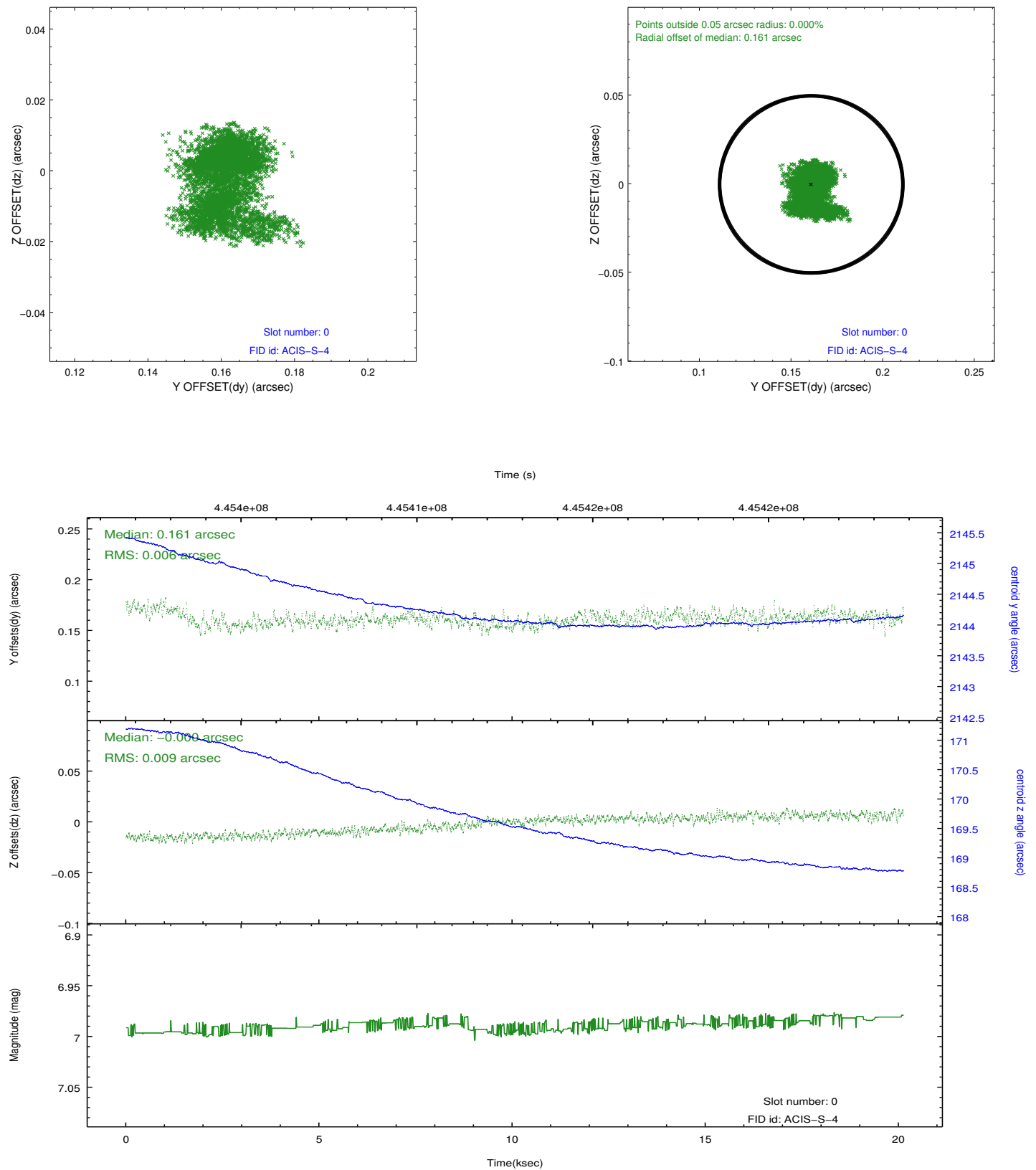


2.4.5 Slot 7

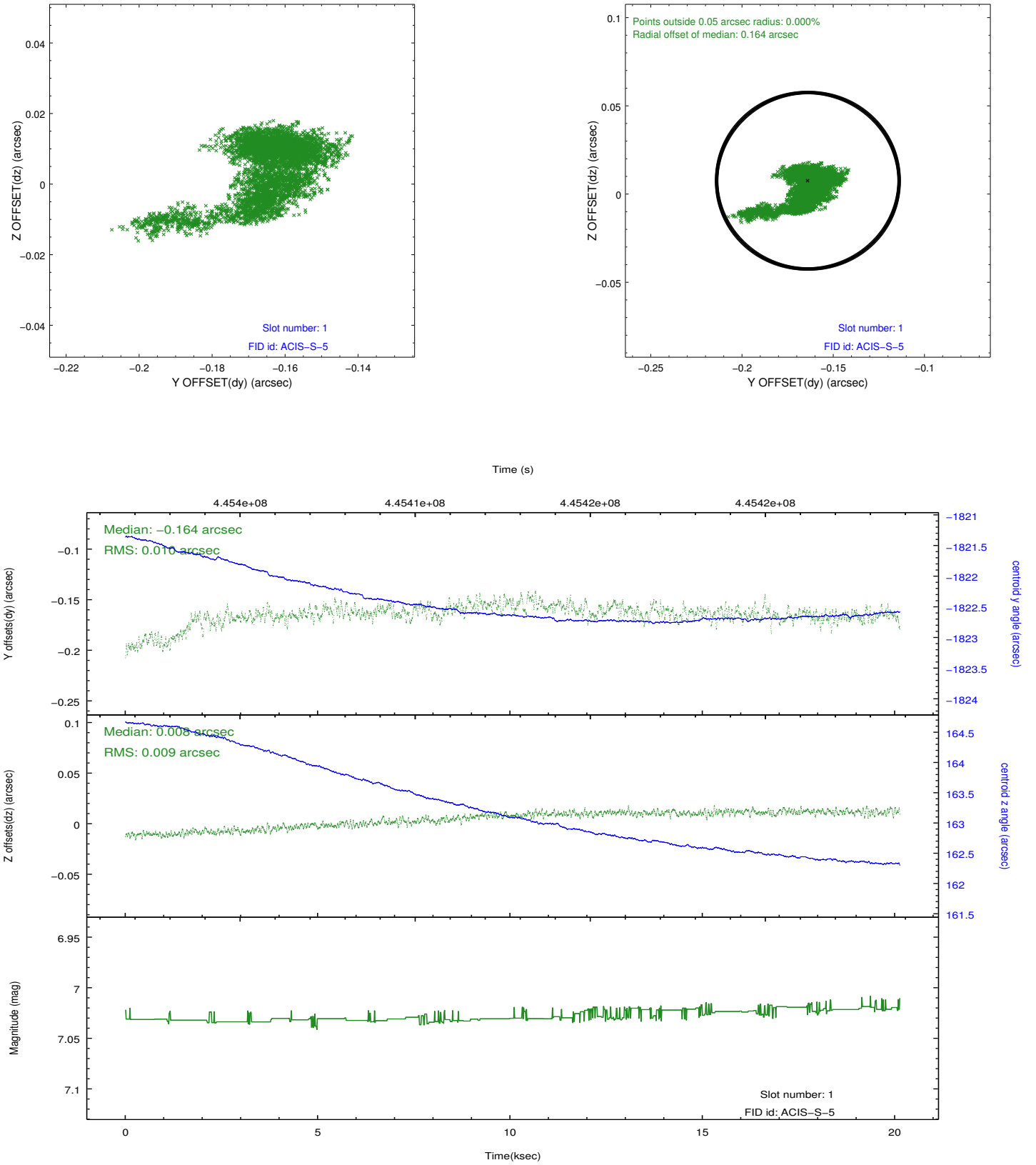


2.5 FID Slots

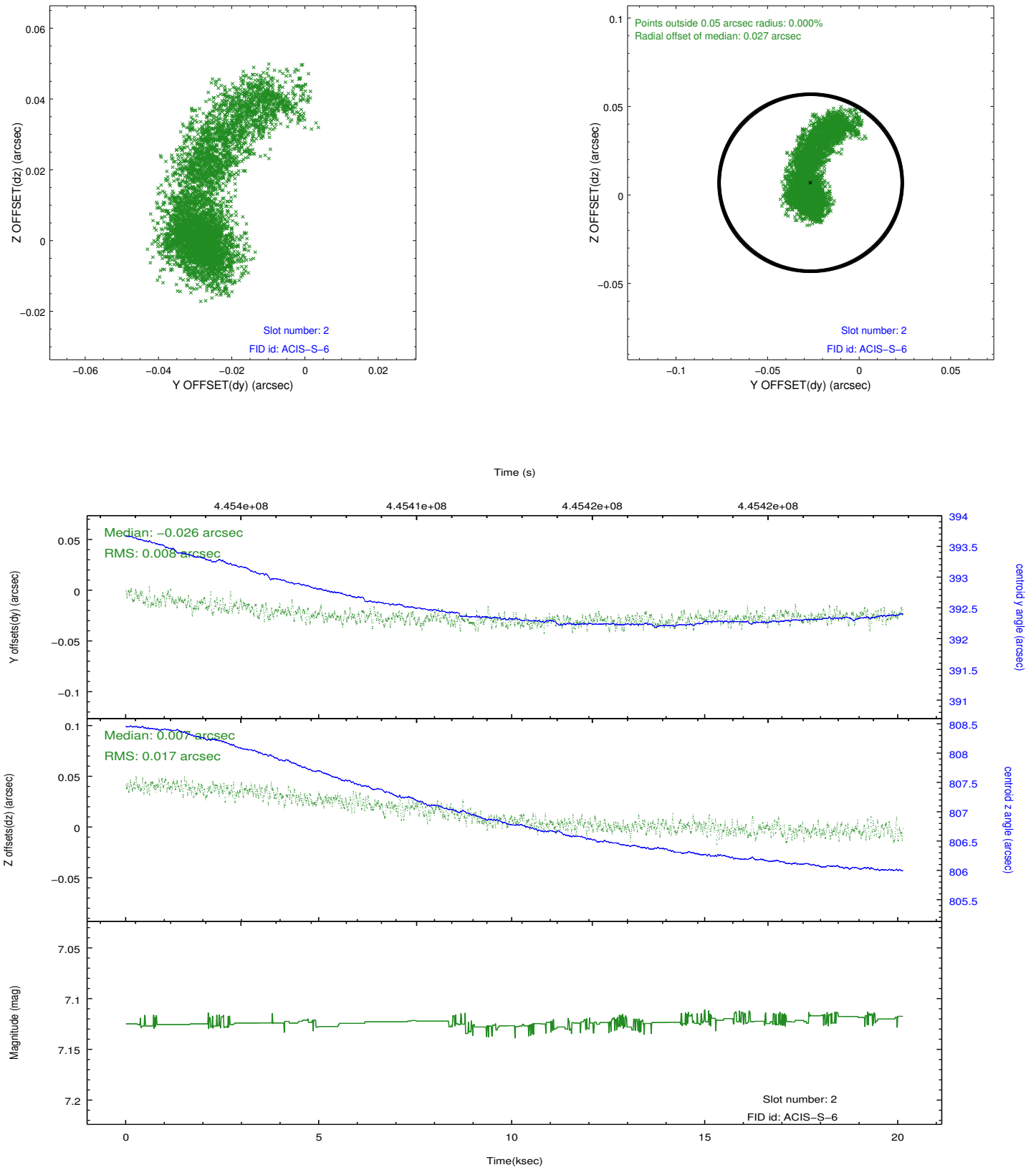
2.5.1 Slot 0



2.5.2 Slot 1



2.5.3 Slot 2



A Summary

A.1 Status

V&V Scientist	David Huenemoerder
V&V Date (YYYY-MM-DD)	2012.02.13
V&V Edition	1
V&V Disposition and Status	OK
V&V Charge Time	20.077

A.2 Comments