

V&V Reference Report

L2 ASCDS Version : 8.4.5

Observation 11899 - L2 Version 2
Chandra X-Ray Center

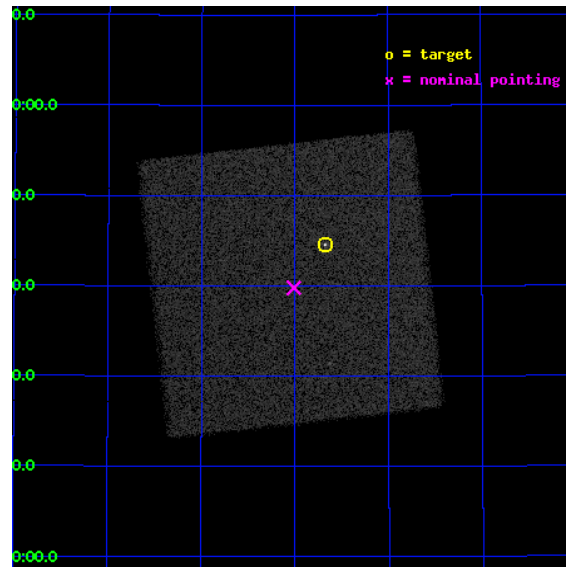
L2 Processing Date : Jul 3 2012

Contents

1	Front	2
2	OBI	3
2.1	OBI	3
2.1.1	Images	3
2.1.2	Parameters	4
2.1.3	Events	4
2.2	Compared Parameters	5
2.3	Aspect	6
2.4	Star Slots	9
2.4.1	Slot 3	9
2.4.2	Slot 4	10
2.4.3	Slot 5	11
2.4.4	Slot 6	12
2.4.5	Slot 7	13
2.5	FID Slots	14
2.5.1	Slot 0	14
2.5.2	Slot 1	15
2.5.3	Slot 2	16
A	Summary	17
A.1	Status	17
A.2	Comments	17

1 Front

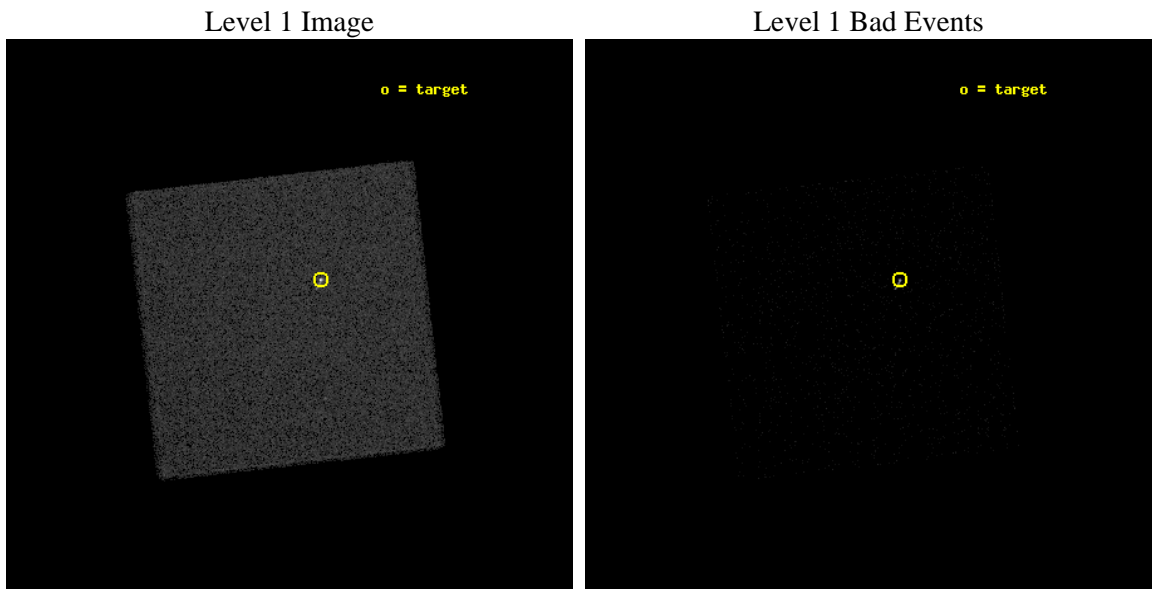
seq_num	290888	Sequence number
obs_id	11899	Observation id
title	AO-11 Calibration Observations to Monitor the Spatial Variations in the HRC-I Gain	Proposal title
observer	Dr. CXC Calibration	Principal investigator
object	ArLac	Source name
ra_targ	332.17	Observer's specified target RA [deg]
dec_targ	45.742306	Observer's specified target Dec [deg]
ra_nom	332.25310556981	Nominal RA [deg]
dec_nom	45.663202046211	Nominal Dec [deg]
roll_nom	218.58500565073	Nominal Roll [deg]
revision	2	Processing version of data
ontime	1180.0313104391	[s]
livetime	1167.1923835301	Ontime multiplied by DTCOR
l2events	89890	Number of level 2 events



2 OBI

2.1 OBI

2.1.1 Images



2.1.2 Parameters

obi_num	0	Obi number	sched_exp_time	1000.000000	[s] Scheduled observation exposure time
ascdsver	8.4.5	Processing system revision	ontime	1180.0313104391	[s]
caldbver	4.5.0	 	l1events	159894	Number of level 1 events
date	2012-07-03T23:46:27	Date and time of file creation			
revision	2	Processing version of data			

2.1.3 Events

Level 1 Events

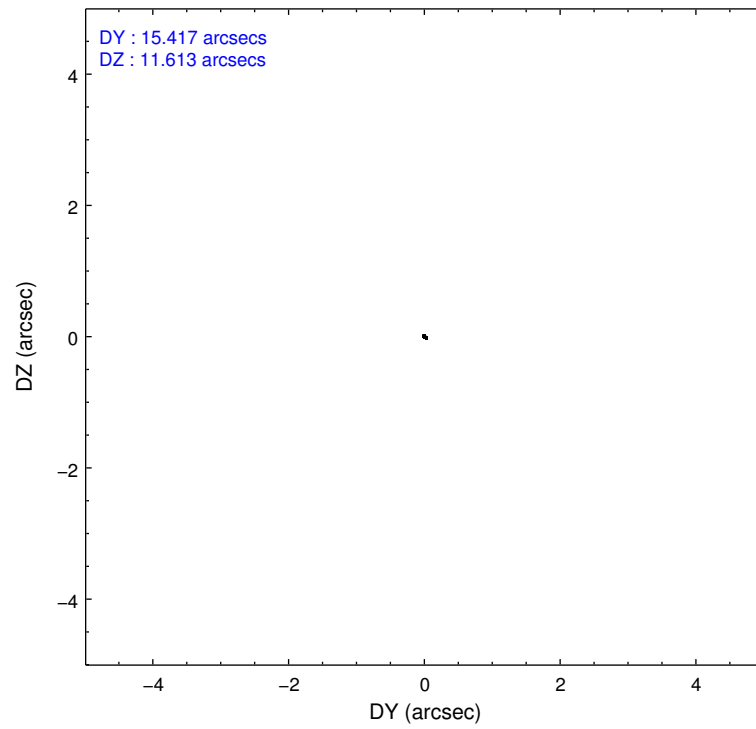
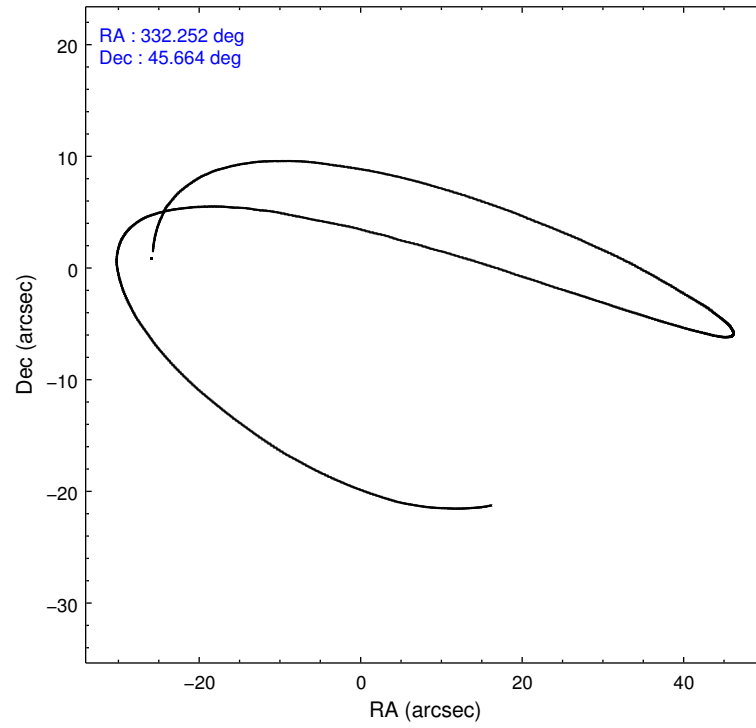
	segment 0
level 1 events	159894
rejected events	35177
rejected %	22%

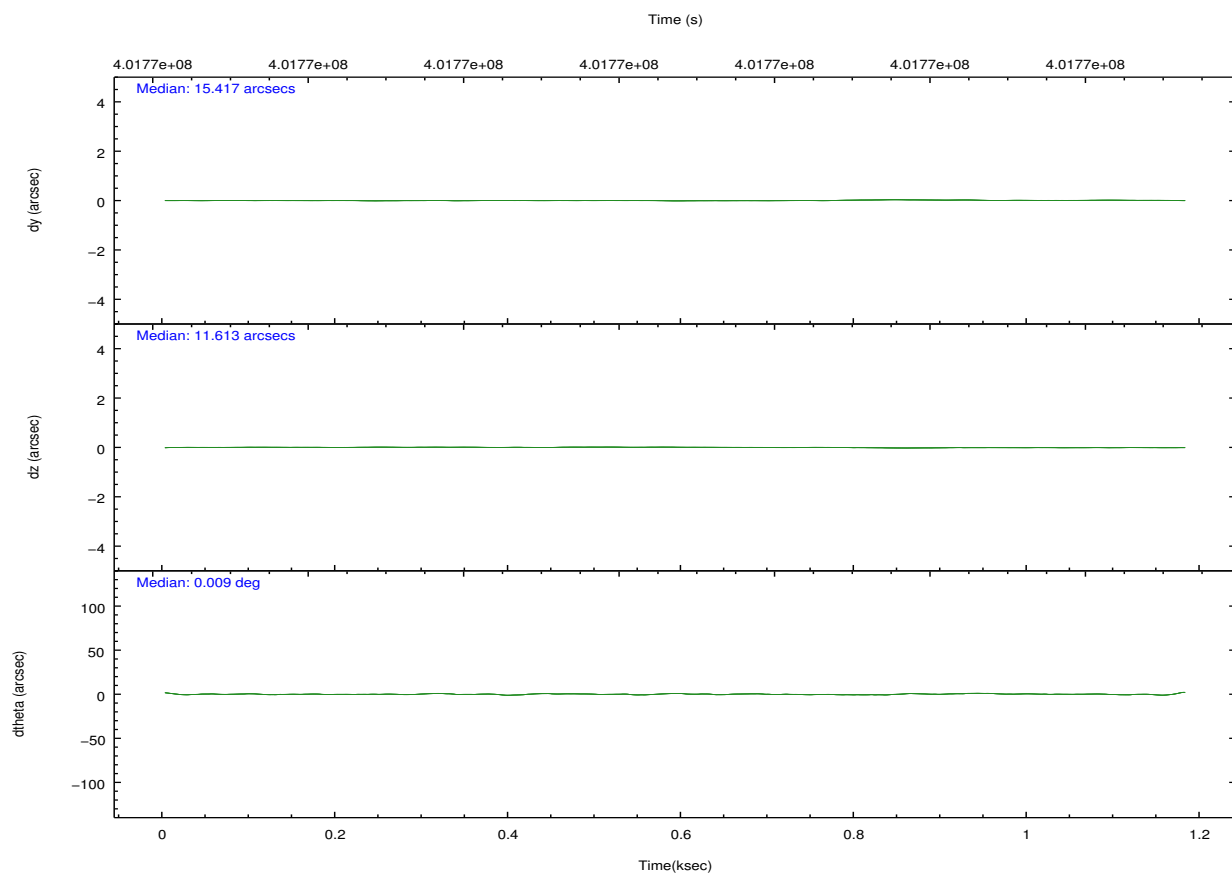
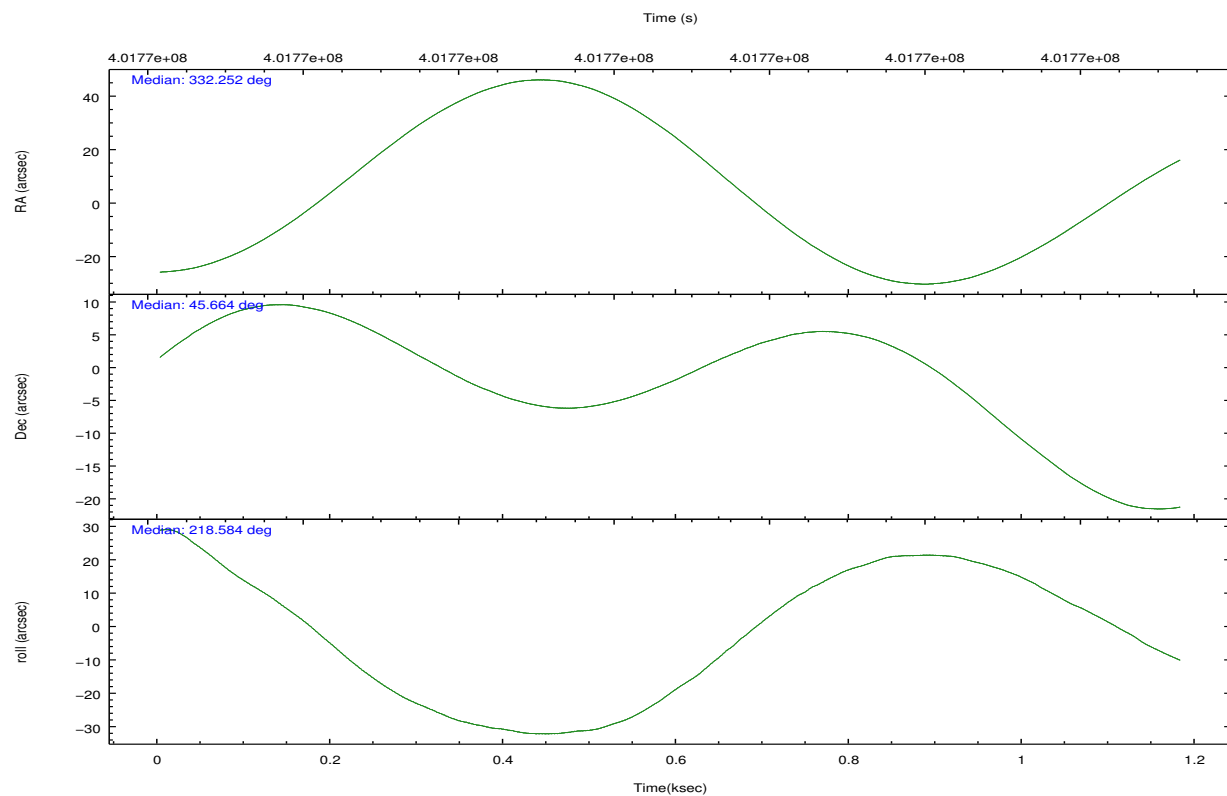
2.2 Compared Parameters

Parameter	Planned	Actual
Instrument	HRC	HRC
Detector	HRC-I	HRC-I
Grating	NONE	NONE
Data mode	OBSERVING	OBSERVING
Observation mode	POINTING	POINTING
[deg] Pointing RA	332.267130	332.2531055698093
[deg] Pointing Dec	45.688586	45.66320204621064
[deg] Pointing Roll	218.670437	218.5850056507328
[mm] SIM focus pos	-1.040293	-1.038866356238299
[mm] SIM defocus	0	0.001426264420575141
[mm] SIM translation stage pos	126.985494	126.9829799899862
[mm] SIM translation stage offset	0	0.002508901615314585
[s] Observation start time (MET)	401773463.184000	401773087.22466
Observation start date	2010-09-25T03:43:17	2010-09-25T03:38:07
[s] Observation end time (MET)	401774463.184000	401774597.56224
Observation end date	2010-09-25T03:59:57	2010-09-25T04:03:17

Parameter	Planned	Actual
Obspar format version number	7	7
Obspar file type	PREDICTED	ACTUAL
Obspar update status	NONE	UPDATED

2.3 Aspect



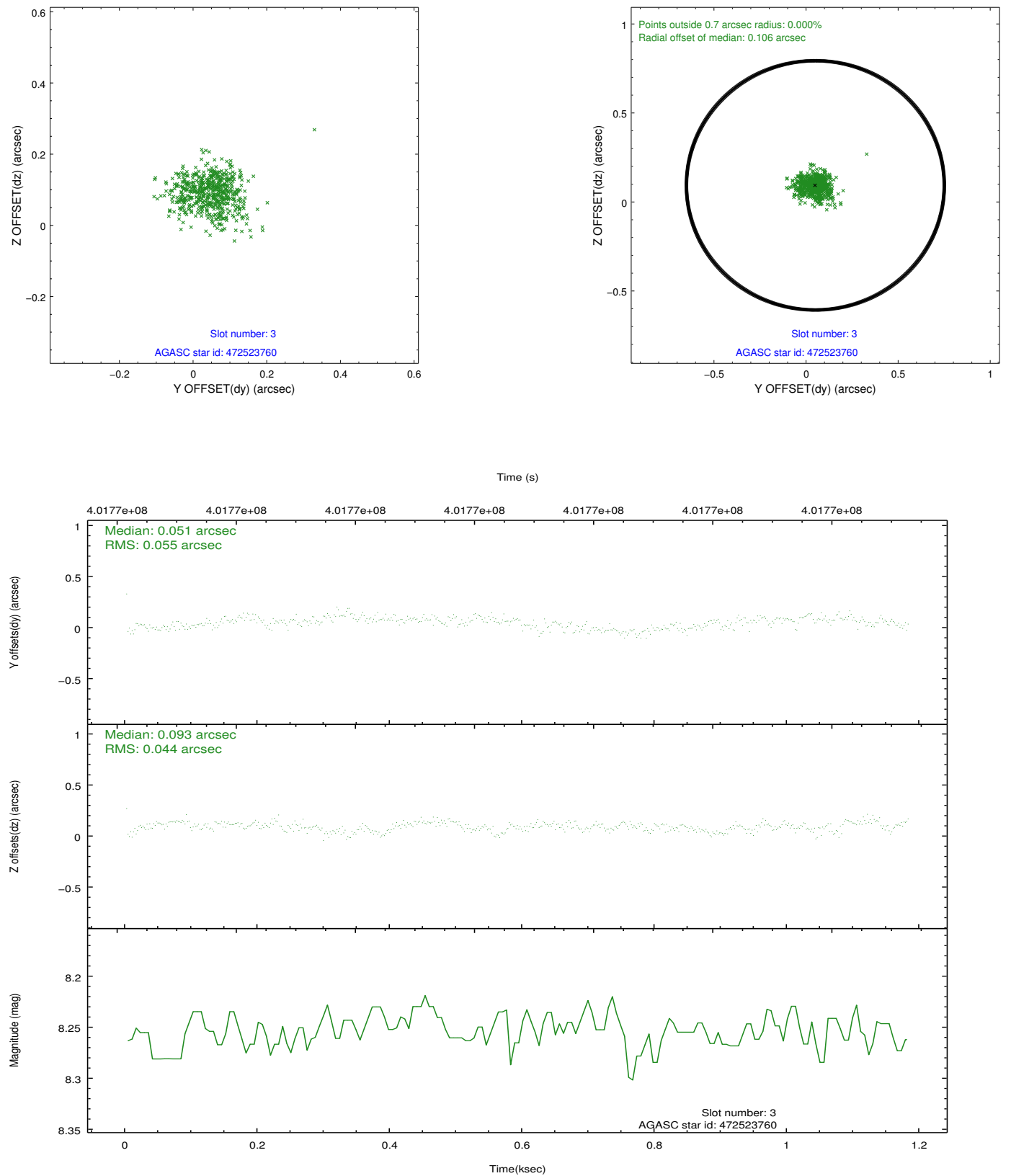


Slot Statistics

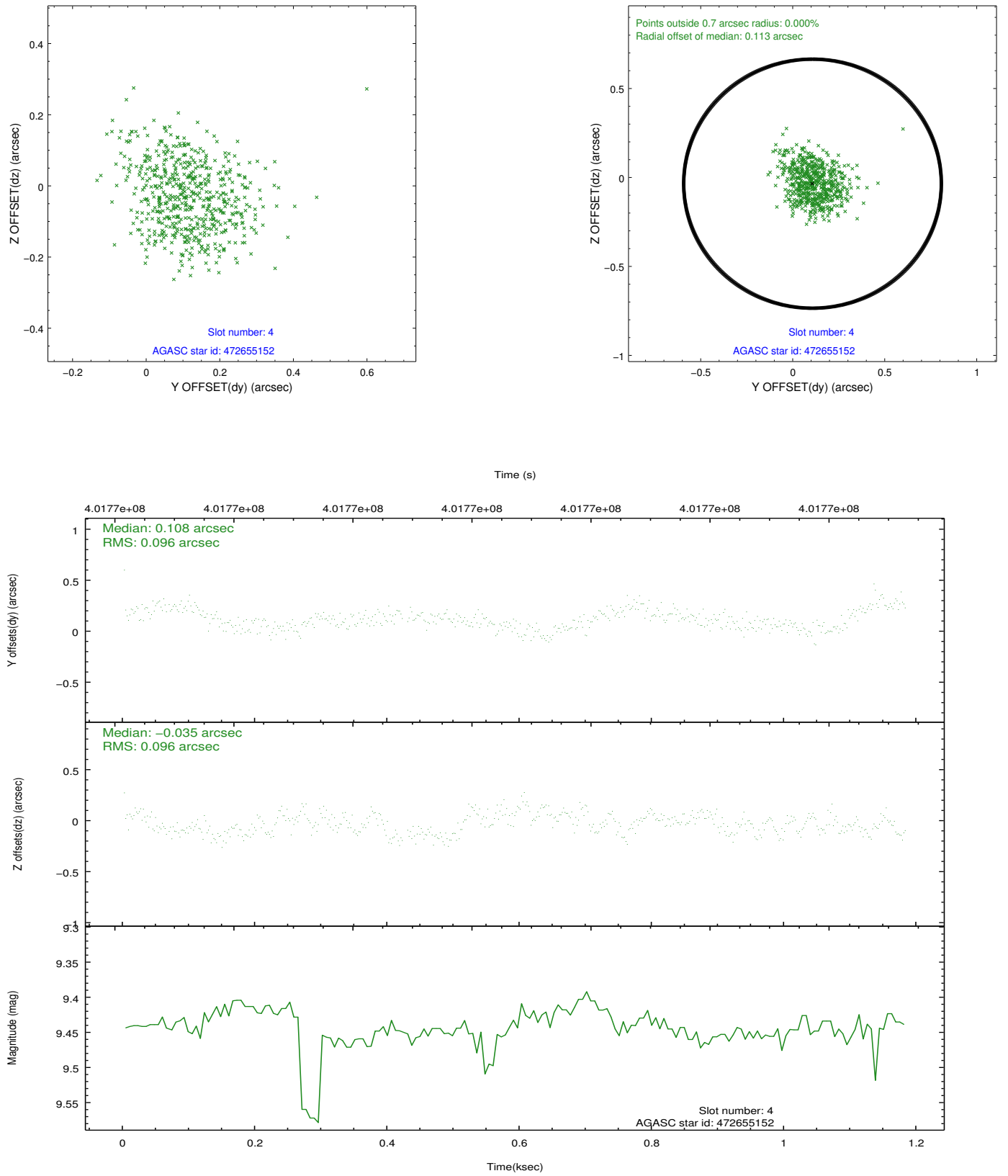
slot	status	id	mag	n_pts	med_dy	med_dz	dr1	dr2	ra	dec	mean_y	mean_z
0	FID	HRC-I-1	6.96	288	-0.072	0.009	0.006	0.010	0.000000	0.000000	-771.31	-1299.58
1	FID	HRC-I-2	6.98	288	0.213	-0.109	0.006	0.011	0.000000	0.000000	838.93	-1305.79
2	FID	HRC-I-3	7.05	288	-0.022	0.011	0.005	0.009	0.000000	0.000000	-1196.83	1000.45
3	GUIDE	472523760	8.25	577	0.051	0.093	0.074	0.121	331.645363	45.403260	1864.57	-182.94
4	GUIDE	472655152	9.44	573	0.108	-0.035	0.145	0.229	332.504239	45.862991	-854.30	-117.92
5	GUIDE	472659832	9.46	577	-0.013	0.088	0.102	0.164	332.780399	46.098139	-1926.31	-352.22
6	GUIDE	472665256	9.01	576	0.184	-0.041	0.107	0.189	332.808125	46.195041	-2198.38	-583.74
7	GUIDE	472525528	6.65	576	-0.322	-0.115	0.075	0.132	331.551102	45.248694	2396.57	96.84

2.4 Star Slots

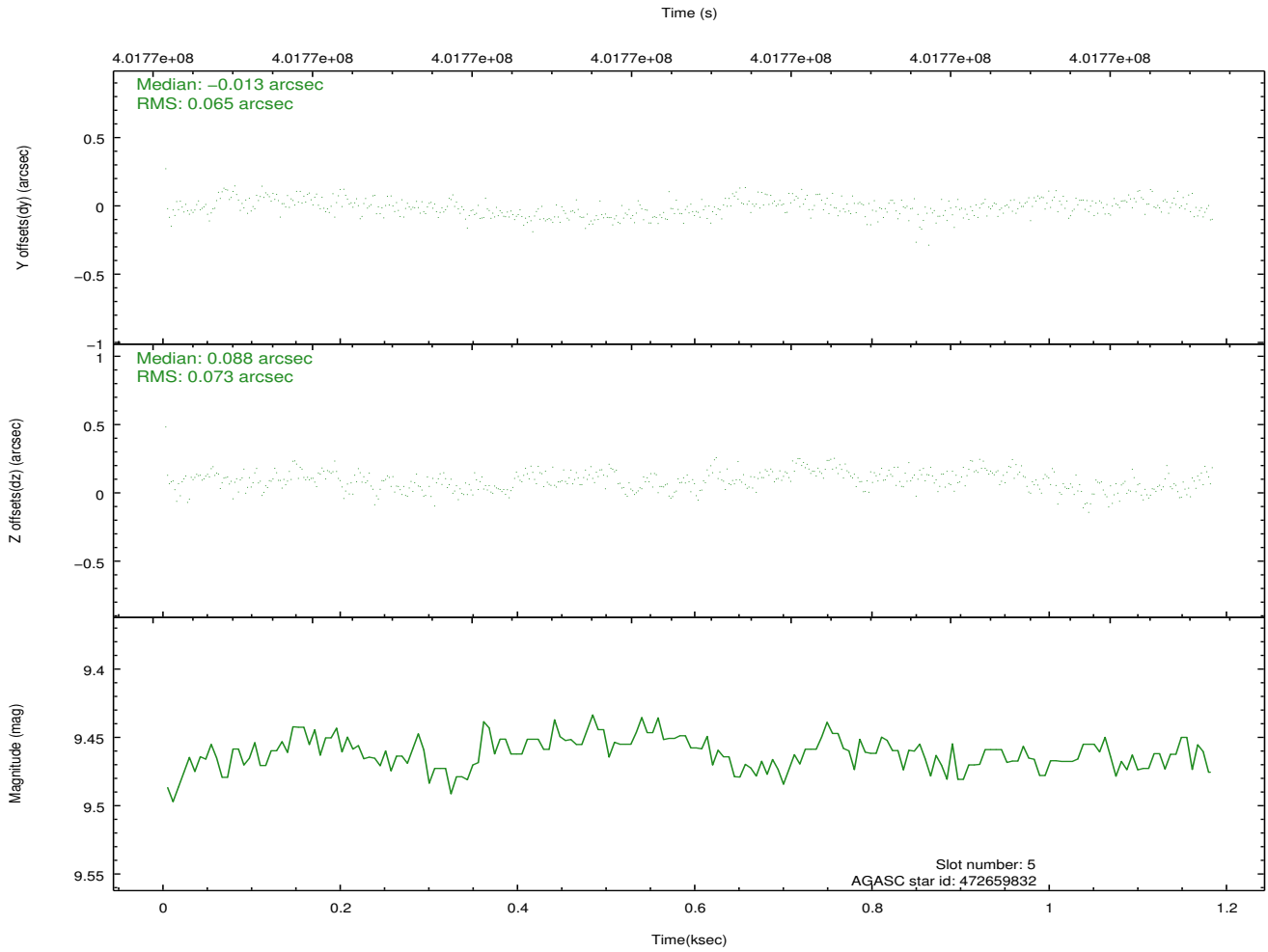
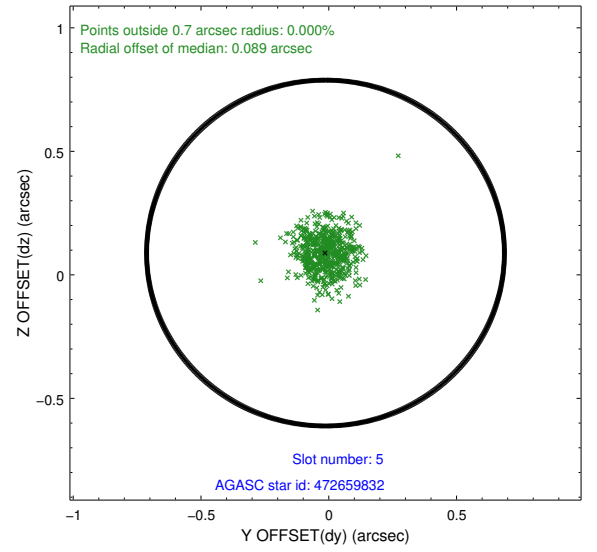
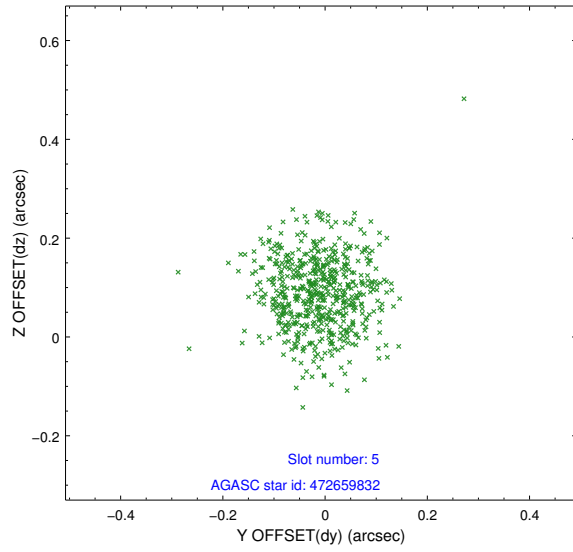
2.4.1 Slot 3



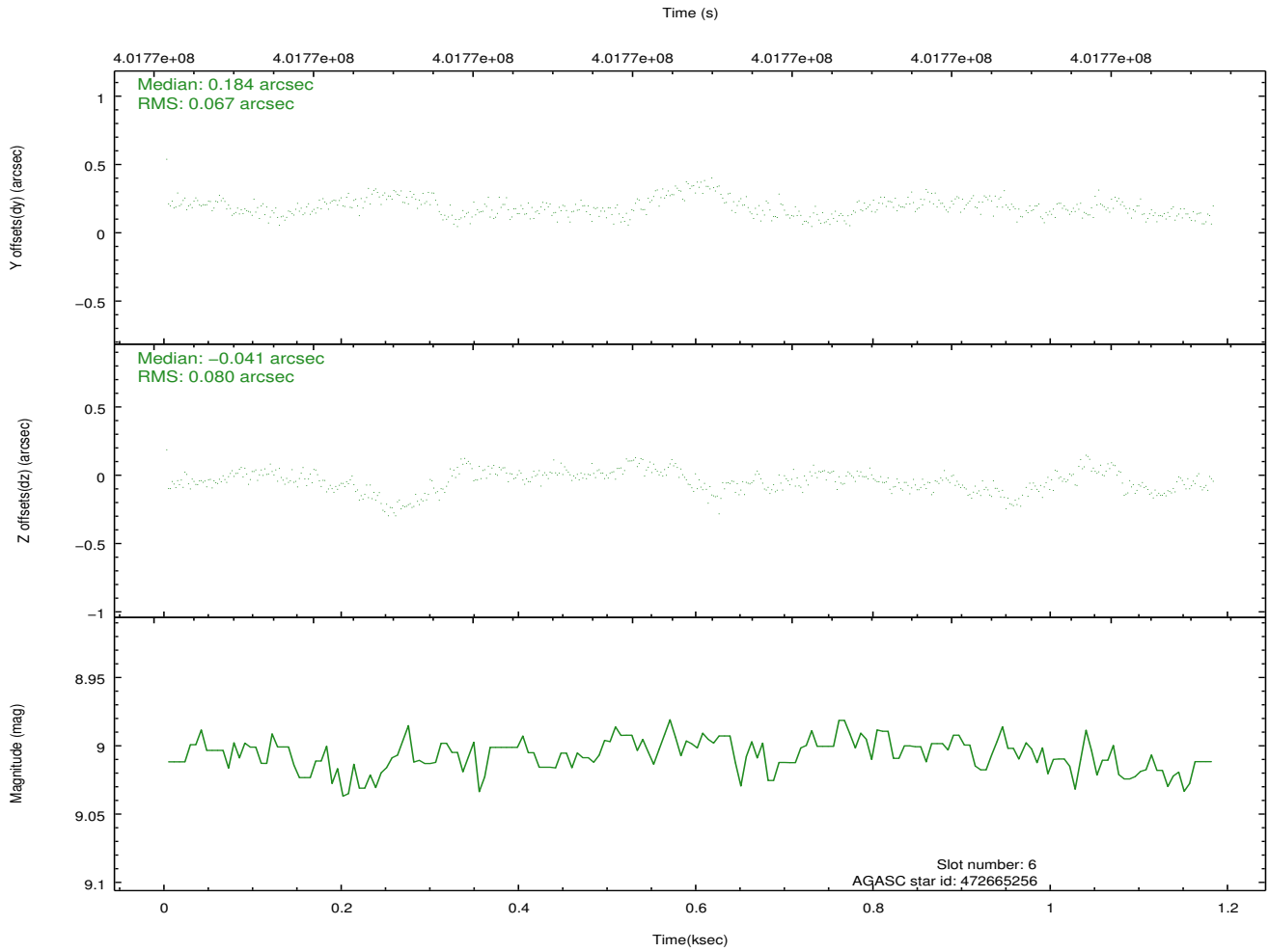
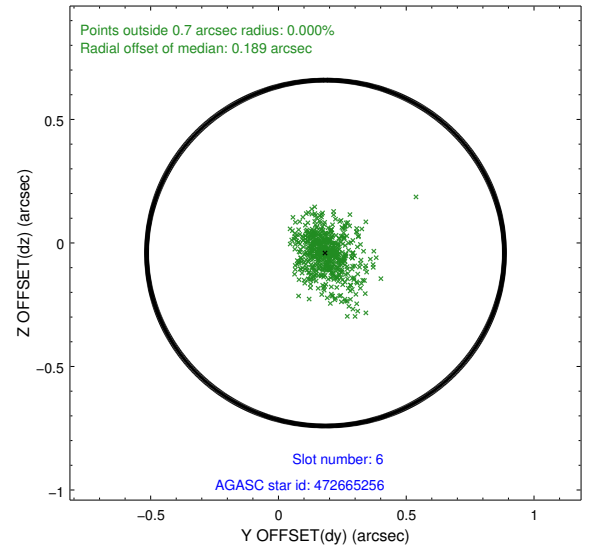
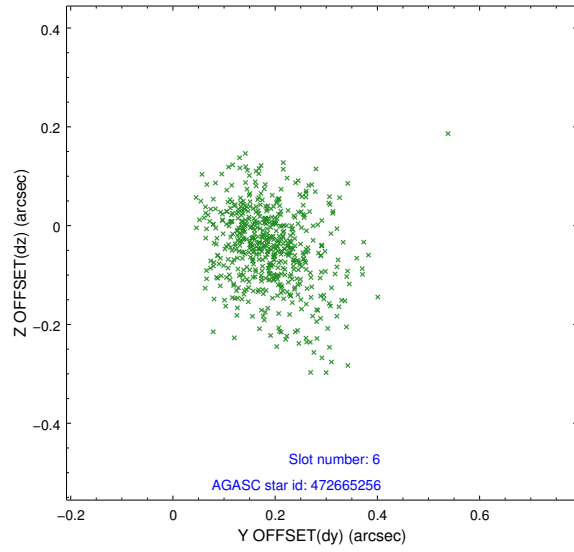
2.4.2 Slot 4



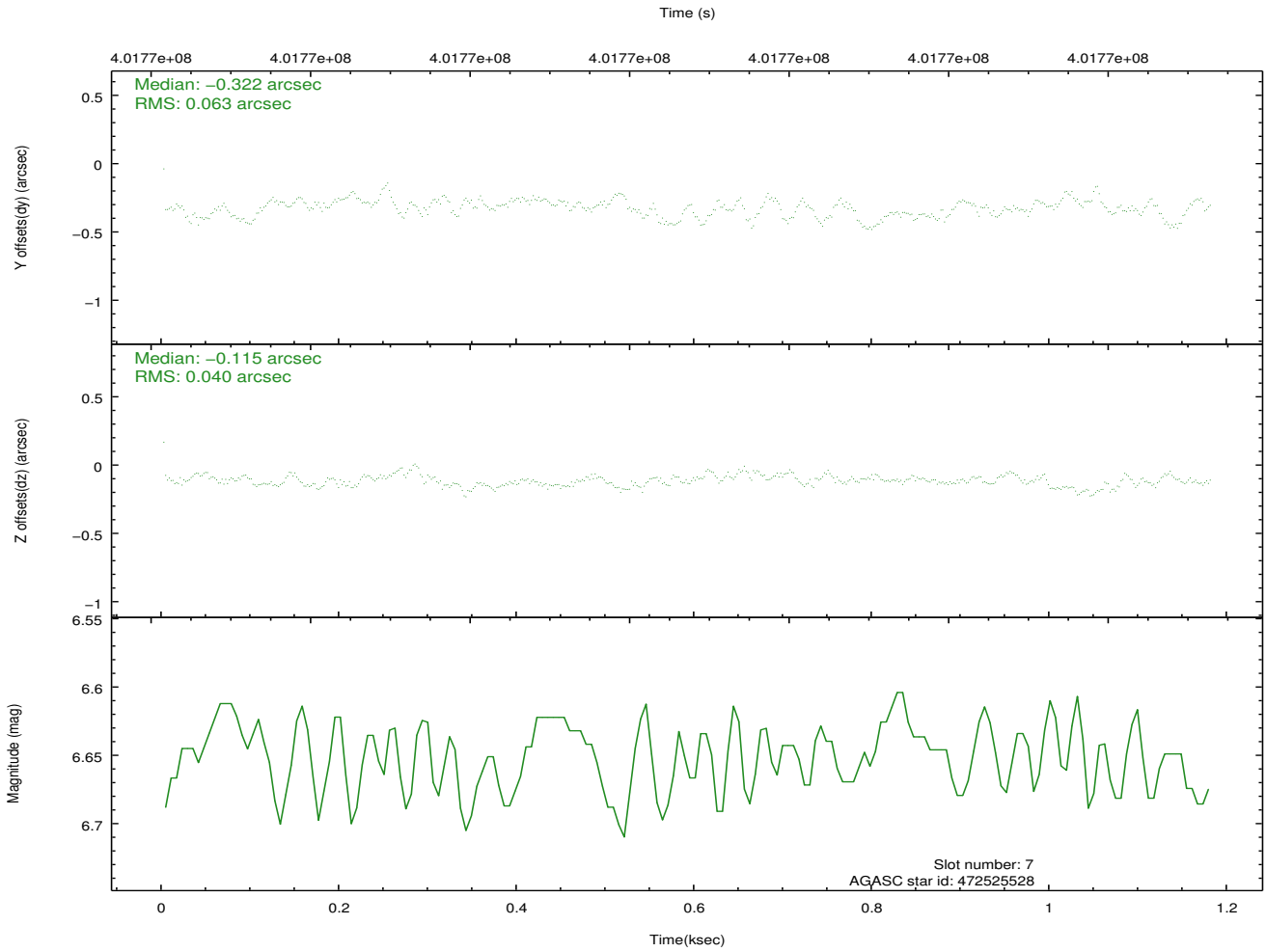
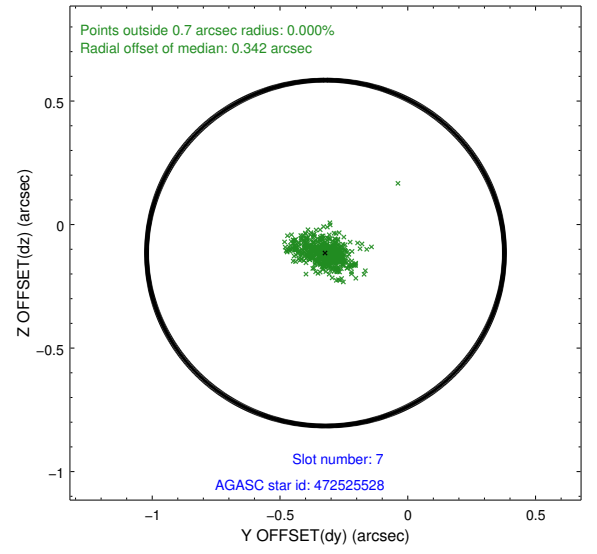
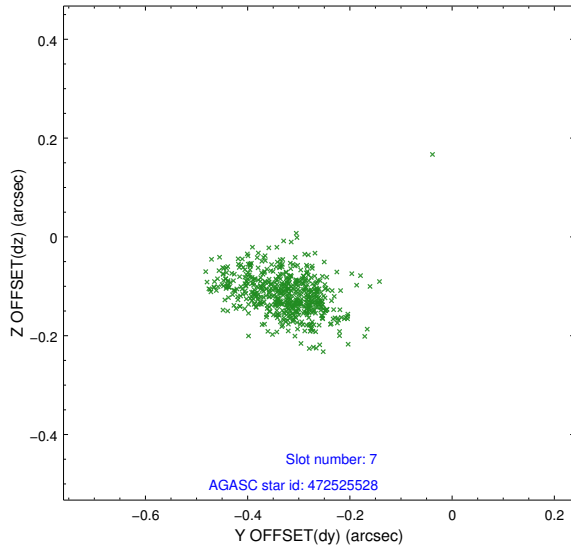
2.4.3 Slot 5



2.4.4 Slot 6

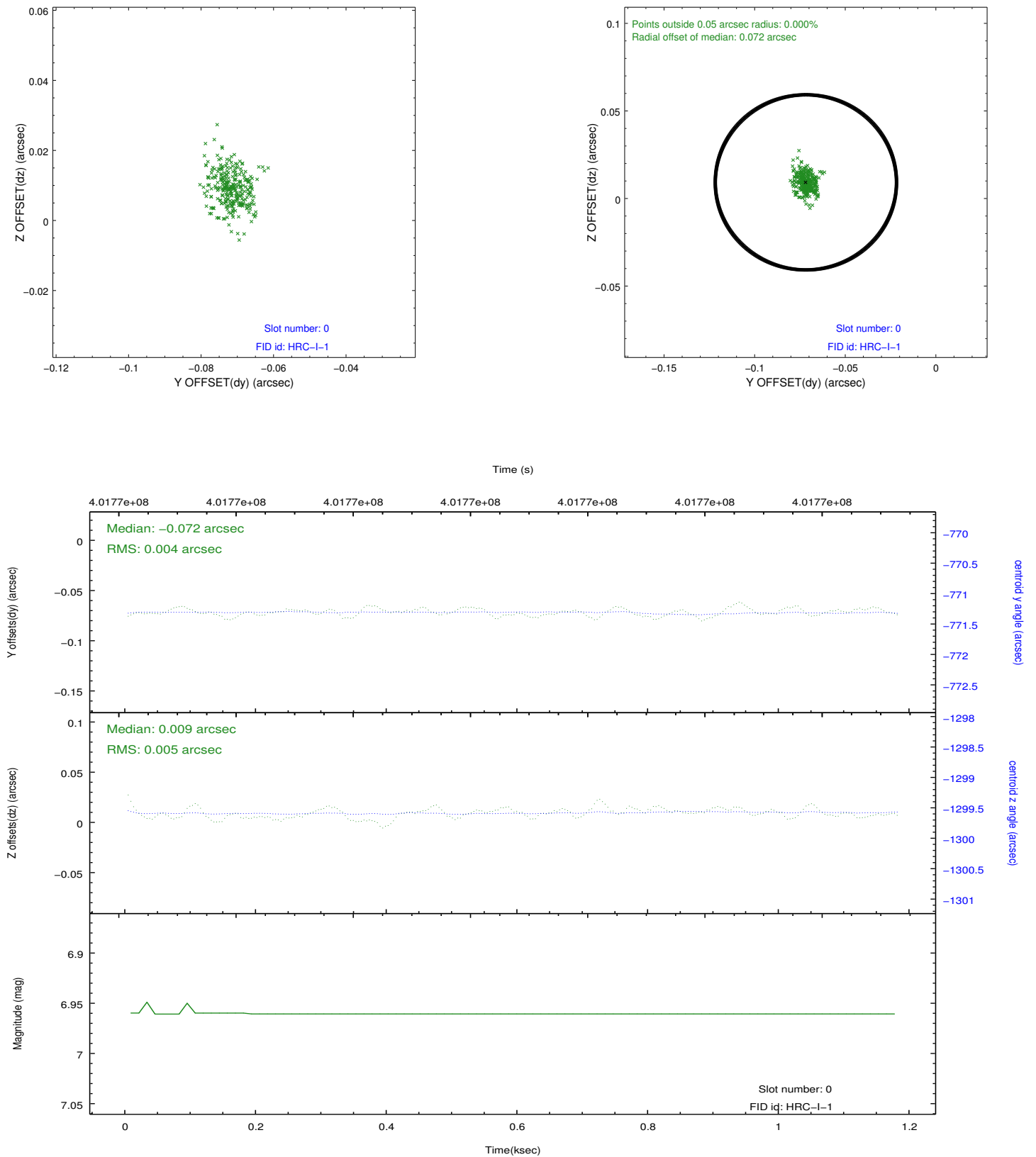


2.4.5 Slot 7

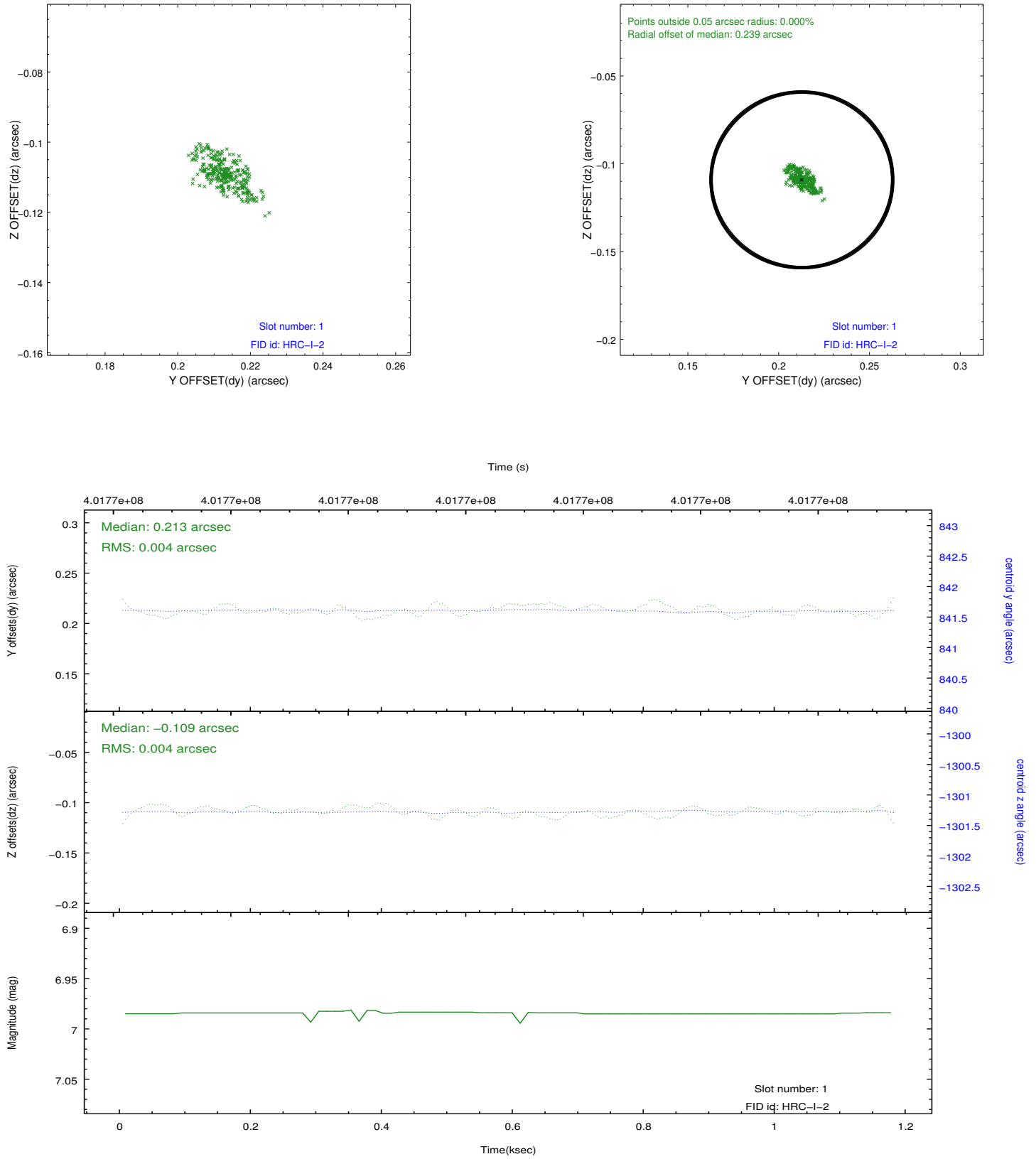


2.5 FID Slots

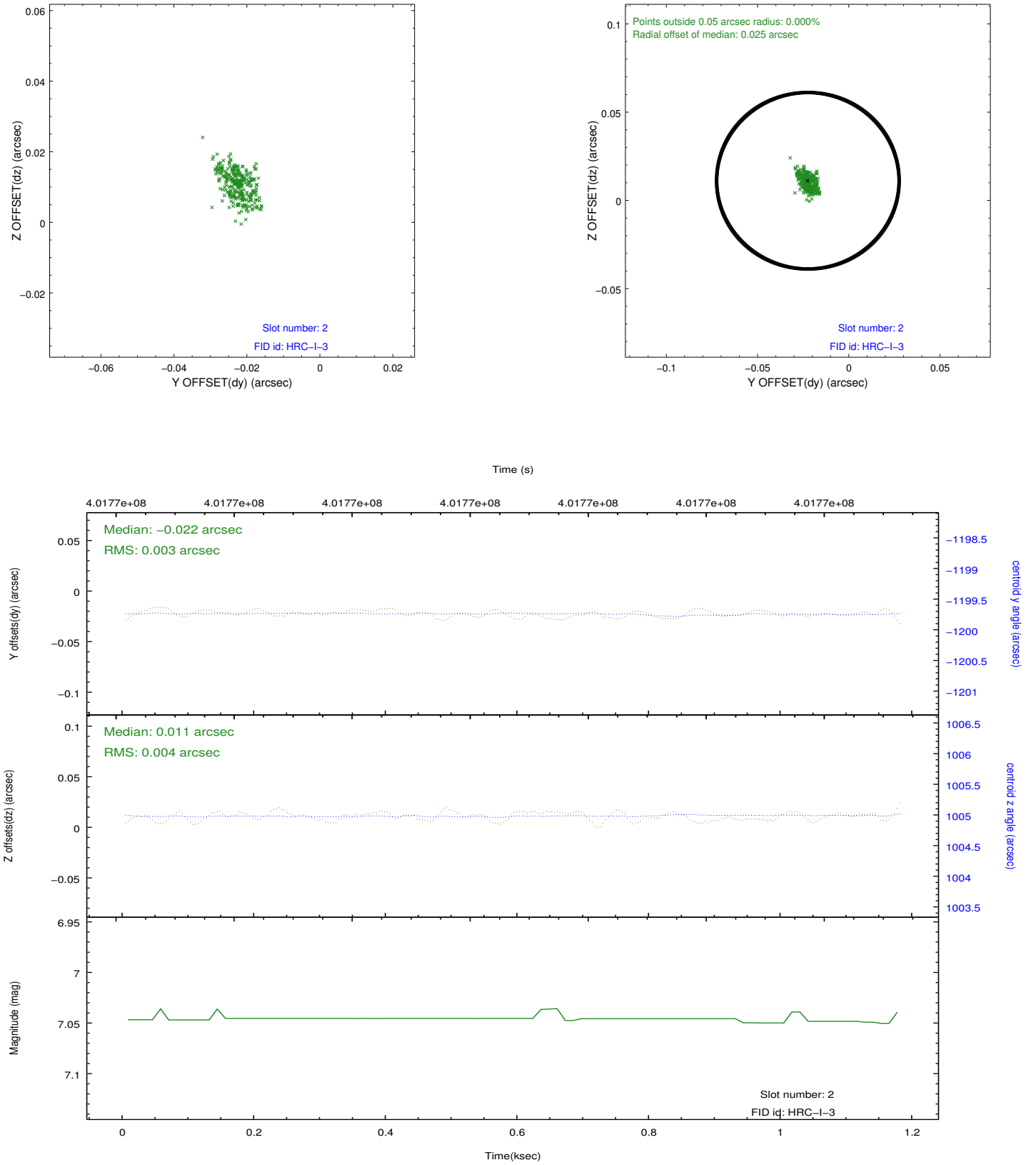
2.5.1 Slot 0



2.5.2 Slot 1



2.5.3 Slot 2



A Summary

A.1 Status

V&V Scientist	Beth Sundheim
V&V Date (YYYY-MM-DD)	2012.07.12
V&V Edition	1
V&V Disposition and Status	OK
V&V Charge Time	1.1800313104391

A.2 Comments