

V&V Reference Report

L2 ASCDS Version : 8.4.5

Observation 11289 - L2 Version 2
Chandra X-Ray Center

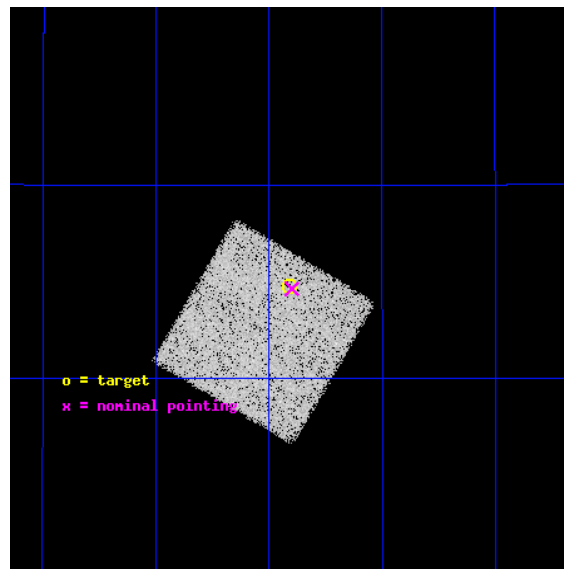
L2 Processing Date : Jun 20 2012

Contents

1	Front	2
2	OBI	3
2.1	OBI	3
2.1.1	Images	3
2.1.2	Bias	3
2.1.3	Parameters	4
2.1.4	Events	4
2.2	Compared Parameters	5
2.3	Aspect	6
2.4	Star Slots	9
2.4.1	Slot 3	9
2.4.2	Slot 4	10
2.4.3	Slot 5	11
2.4.4	Slot 6	12
2.4.5	Slot 7	13
2.5	FID Slots	14
2.5.1	Slot 0	14
2.5.2	Slot 1	15
2.5.3	Slot 2	16
A	Summary	17
A.1	Status	17
A.2	Comments	17

1 Front

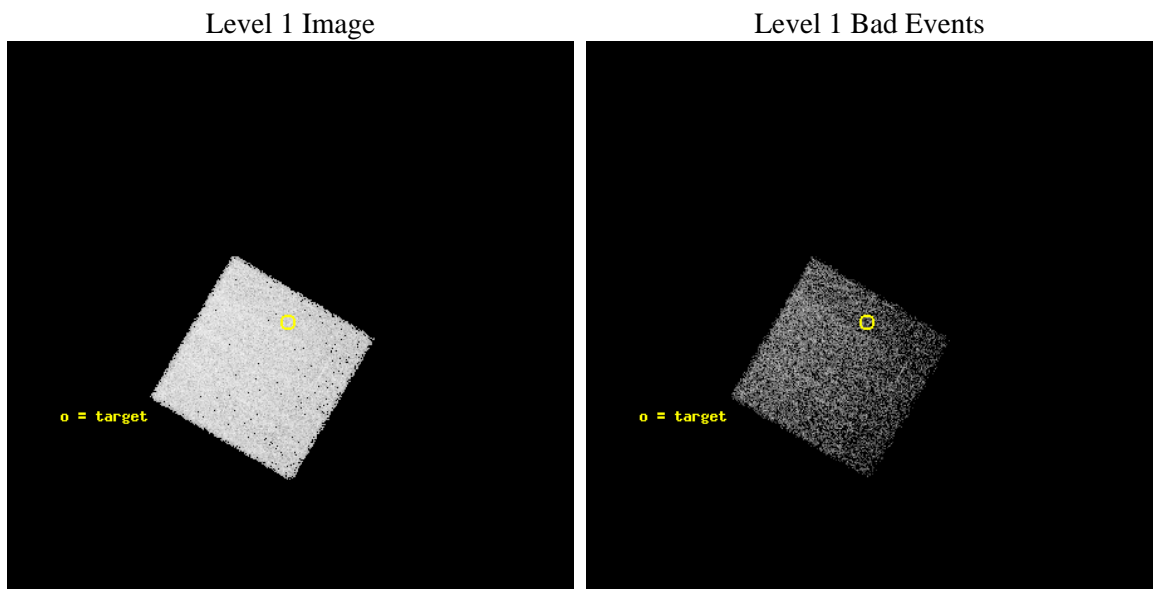
seq_num	600808	Sequence number
obs_id	11289	Observation id
title	Ultra-Luminous x-Ray Sources in the Most Metal-Poor Galaxies	Propo
observer	Dr Andrea Prestwich	Principal investigator
object	KUG 1013+381	Source name
dtcycle	0	
cycle	P	events from which exps? Prim/Second/Both
ra_targ	154.102083	Observer's specified target RA [deg]
dec_targ	37.912778	Observer's specified target Dec [deg]
ra_nom	154.09983996266	Nominal RA [deg]
dec_nom	37.910657681134	Nominal Dec [deg]
roll_nom	120.42024538331	Nominal Roll [deg]
revision	2	Processing version of data
ontime	9531.0	Sum of GTIs [s]
livetime	9402.3755031174	Livetime [s]
ontime7	9531.0	Sum of GTIs [s]
l2events	41342	Number of level 2 events



2 OBI

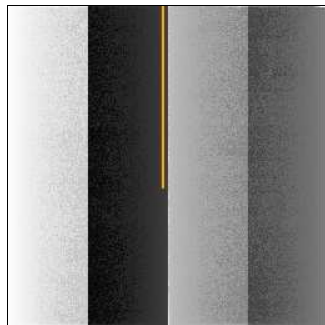
2.1 OBI

2.1.1 Images



2.1.2 Bias

Chip 7



2.1.3 Parameters

obi_num	1	Obi number	sched_exp_time	9411.000000	[s] Scheduled observation exposure time
ascdsver	8.4.5	Processing system revision	ontime	9531.0	Sum of GTIs [s]
caldsver	4.4.10	 	ontime7	9531.0	Sum of GTIs [s]
date	2012-06-20T11:51:48	Date and time of file creation	l1events	103340	Number of level 1 events
revision	2	Processing version of data			

2.1.4 Events

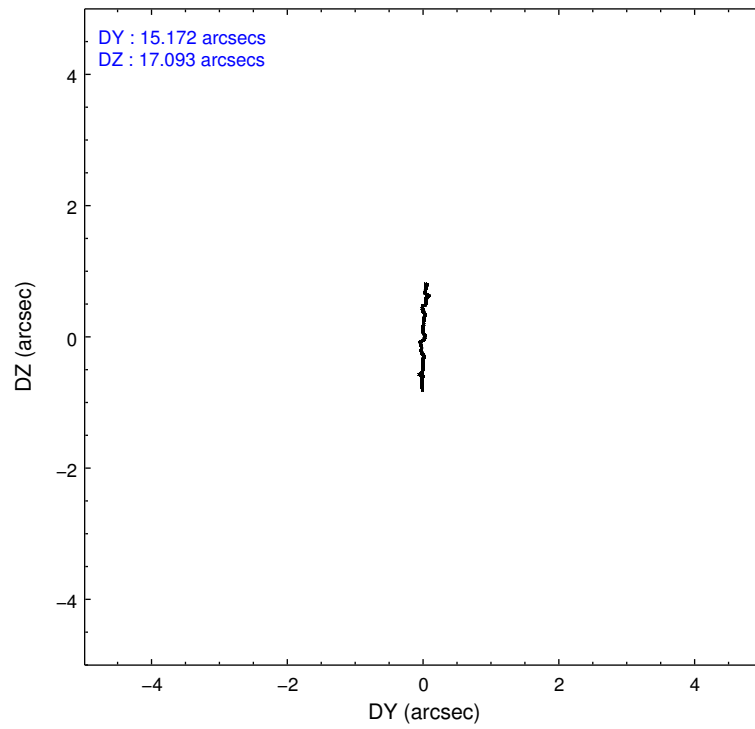
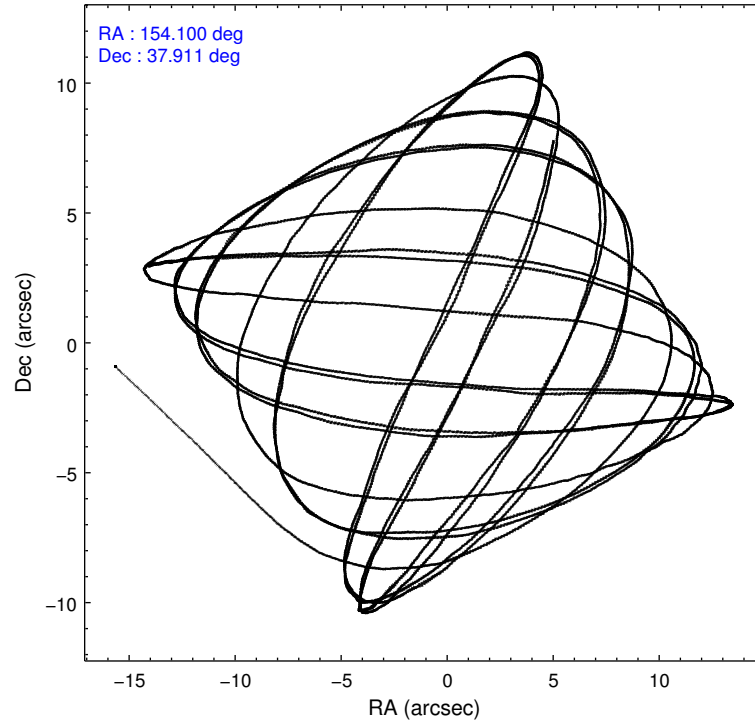
	ccd 7
level 1 events	103340
rejected events	60834
rejected %	58%

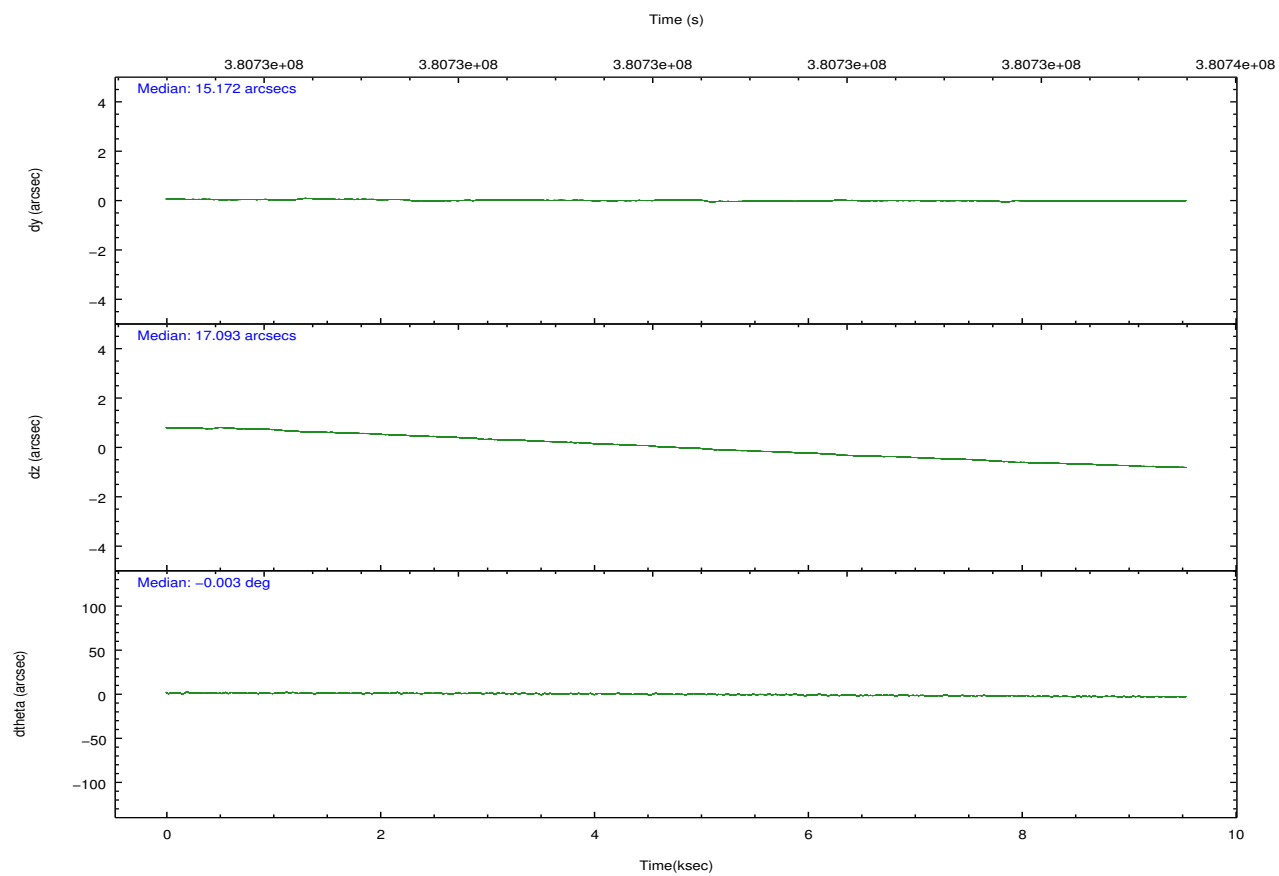
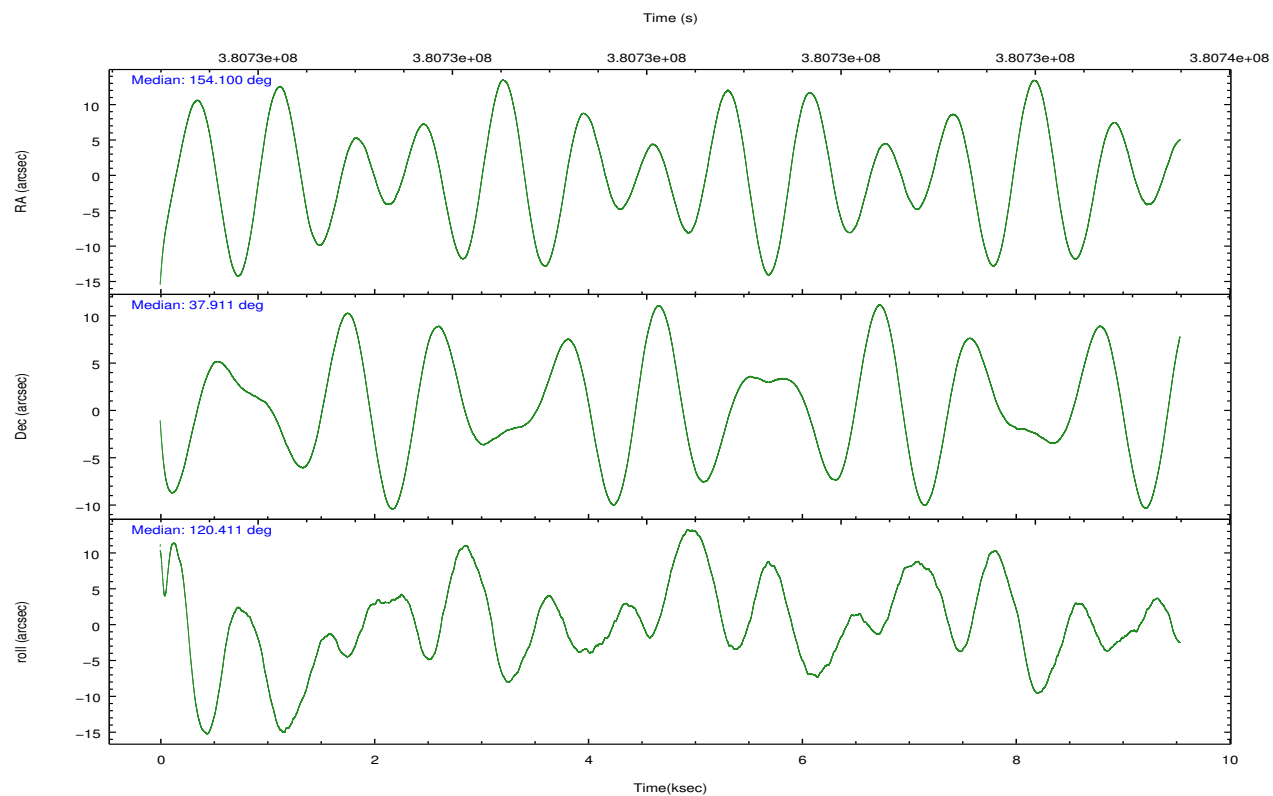
	ccd 7
grade 0 events	4570
	4%
grade 1 events	130
	0%
grade 2 events	9734
	9%
grade 3 events	4401
	4%
grade 4 events	4290
	4%
grade 5 events	11016
	10%
grade 6 events	24480
	23%
grade 7 events	44719
	43%

2.2 Compared Parameters

Parameter	Planned	Actual	Parameter	Planned	Actual
Instrument	ACIS	ACIS	Obspar format version number	7	7
Detector	ACIS-7	ACIS-7	Obspar file type	PREDICTED	ACTUAL
Grating	NONE	NONE	Obspar update status	NONE	UPDATED
Data mode	VFAINT	VFAINT	Number of optional ACIS chips dropped	0	0
Observation mode	POINTING	POINTING	On-chip summing requested	N	N
[deg] Pointing RA	154.130211	154.0998399626613	Subarray requested	NONE	NONE
[deg] Pointing Dec	37.897554	37.91065768113386	Alternating exposures requested	N	N
[deg] Pointing Roll	120.244959	120.4202453833062	[s] Primary exposure time	0.000000	3
[mm] SIM focus pos	-0.684267	-0.6828225247311905			
[mm] SIM defocus	0	0.001444936568705701			
[mm] SIM translation stage pos	-190.132523	-190.1425803651734			
[mm] SIM translation stage offset	0	0.01005778216563158			
[s] Observation start time (MET)	380725592.184000	380724346.25206			
Observation start date	2010-01-24T13:05:26	2010-01-24T12:45:46			
[s] Observation end time (MET)	380735003.184000	380735746.30263			
Observation end date	2010-01-24T15:42:17	2010-01-24T15:55:46			
Read mode	TIMED	TIMED			

2.3 Aspect



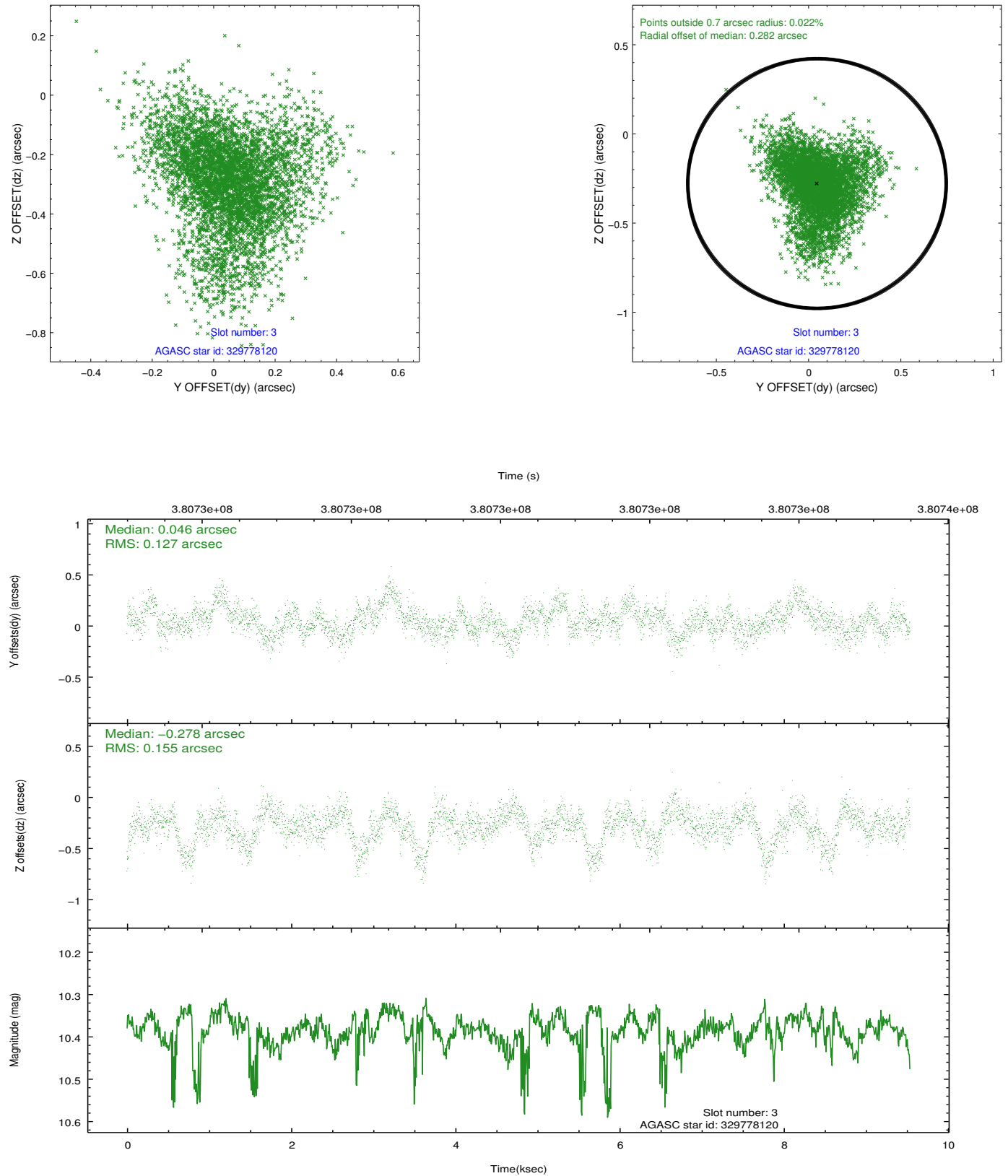


Slot Statistics

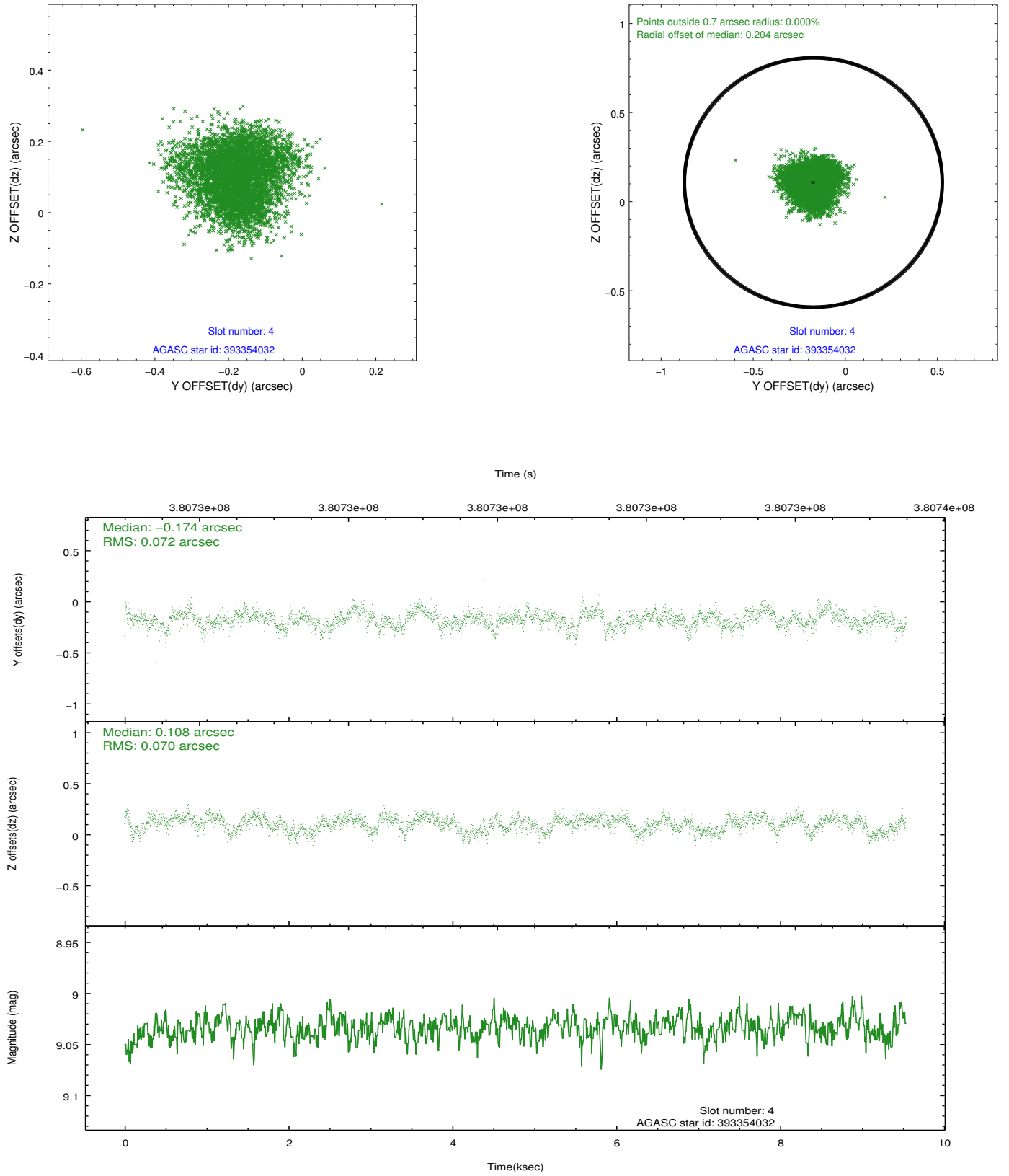
slot	status	id	mag	n_pts	med_dy	med_dz	dr1	dr2	ra	dec	mean_y	mean_z
0	FID	ACIS-S-2	6.88	2327	-0.066	-0.033	0.014	0.022	0.000000	0.000000	-768.26	-1738.50
1	FID	ACIS-S-4	6.96	2327	0.162	0.041	0.005	0.010	0.000000	0.000000	2145.03	169.41
2	FID	ACIS-S-5	6.99	2327	-0.127	0.001	0.013	0.021	0.000000	0.000000	-1820.40	163.76
3	GUIDE	329778120	10.38	4638	0.046	-0.278	0.208	0.361	153.878923	37.381720	-1240.98	1555.48
4	GUIDE	393354032	9.03	4651	-0.174	0.108	0.108	0.169	154.259481	38.515802	1738.94	-1435.05
5	GUIDE	393354416	9.56	4643	-0.189	-0.179	0.173	0.281	153.938205	38.114408	949.55	76.07
6	GUIDE	393356720	10.13	4644	0.149	0.232	0.168	0.267	154.356252	37.881594	-370.78	-524.98
7	GUIDE	393357336	10.42	4637	0.167	0.113	0.178	0.286	154.502853	37.634947	-1349.78	-442.72

2.4 Star Slots

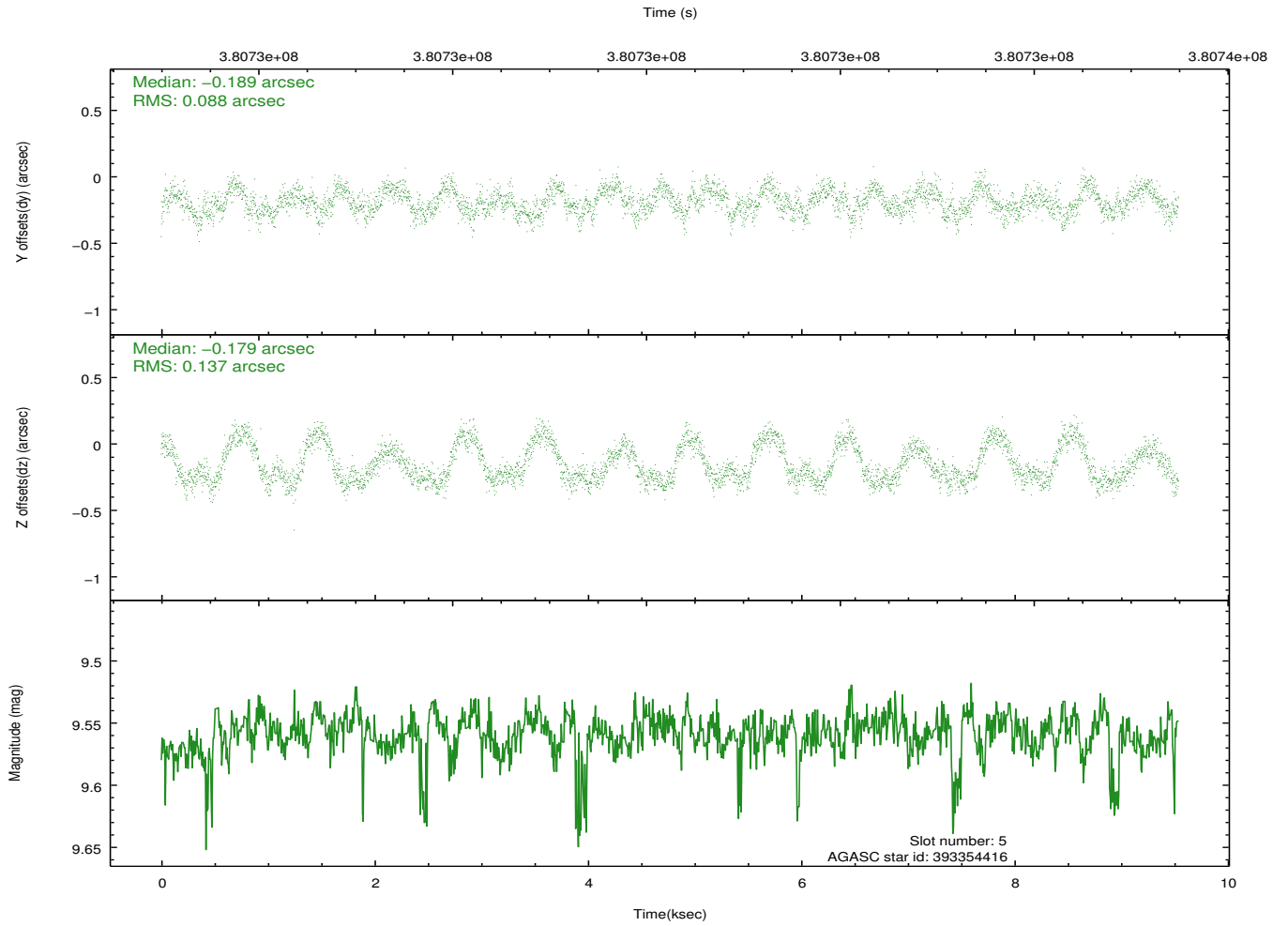
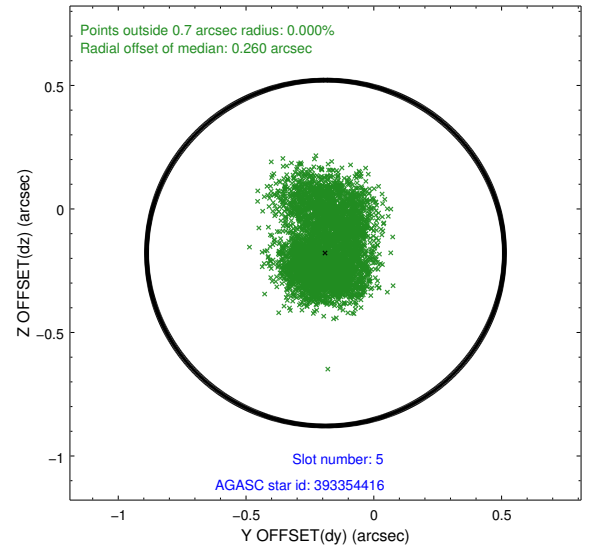
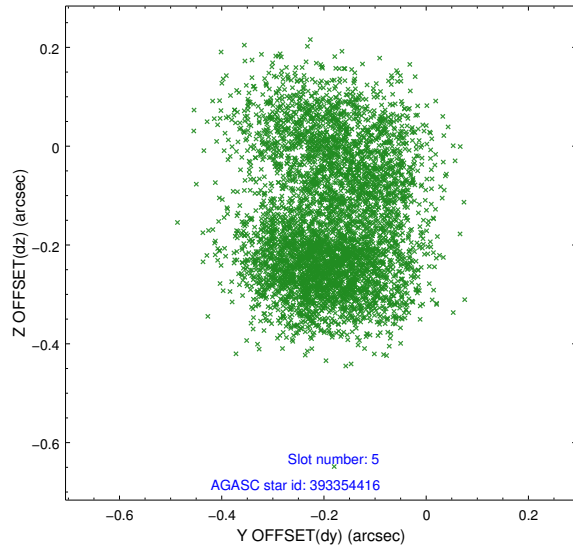
2.4.1 Slot 3



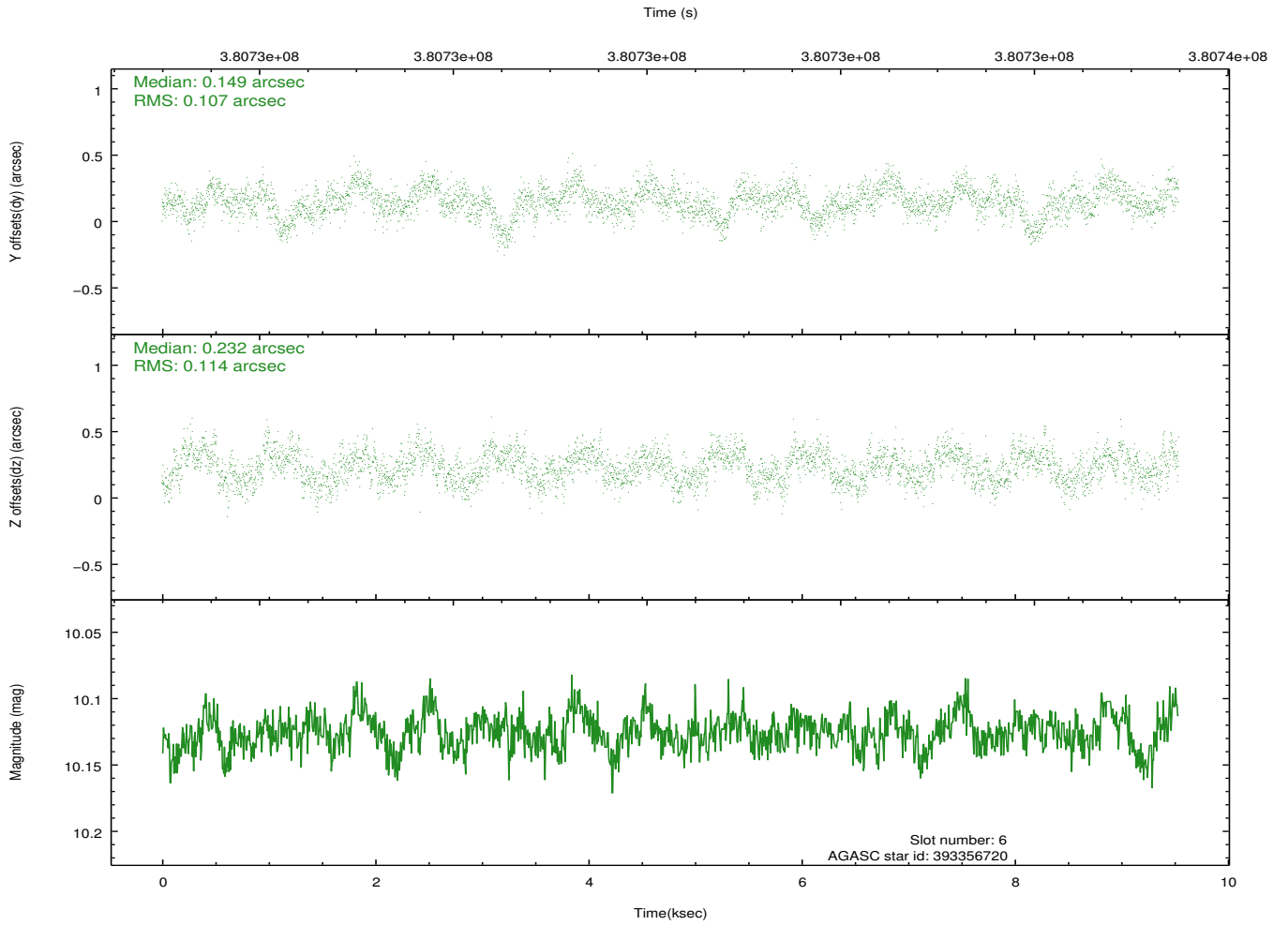
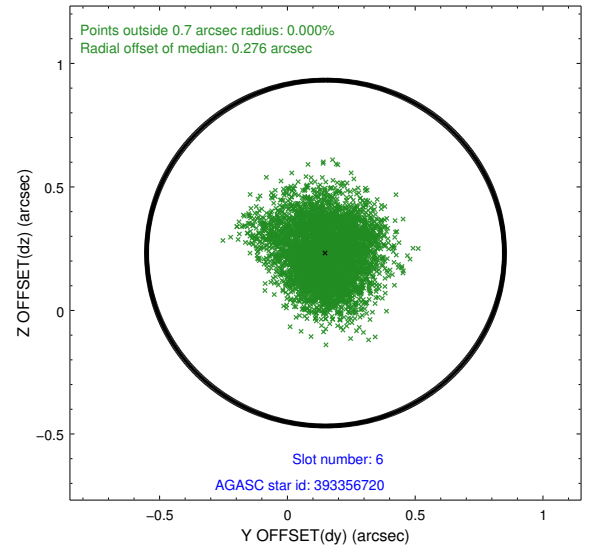
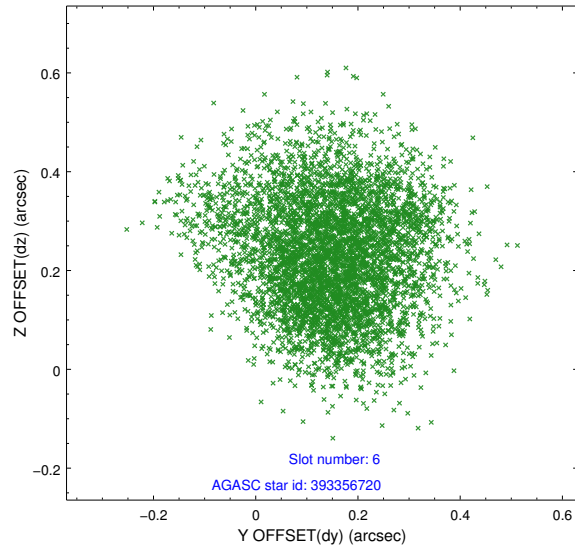
2.4.2 Slot 4



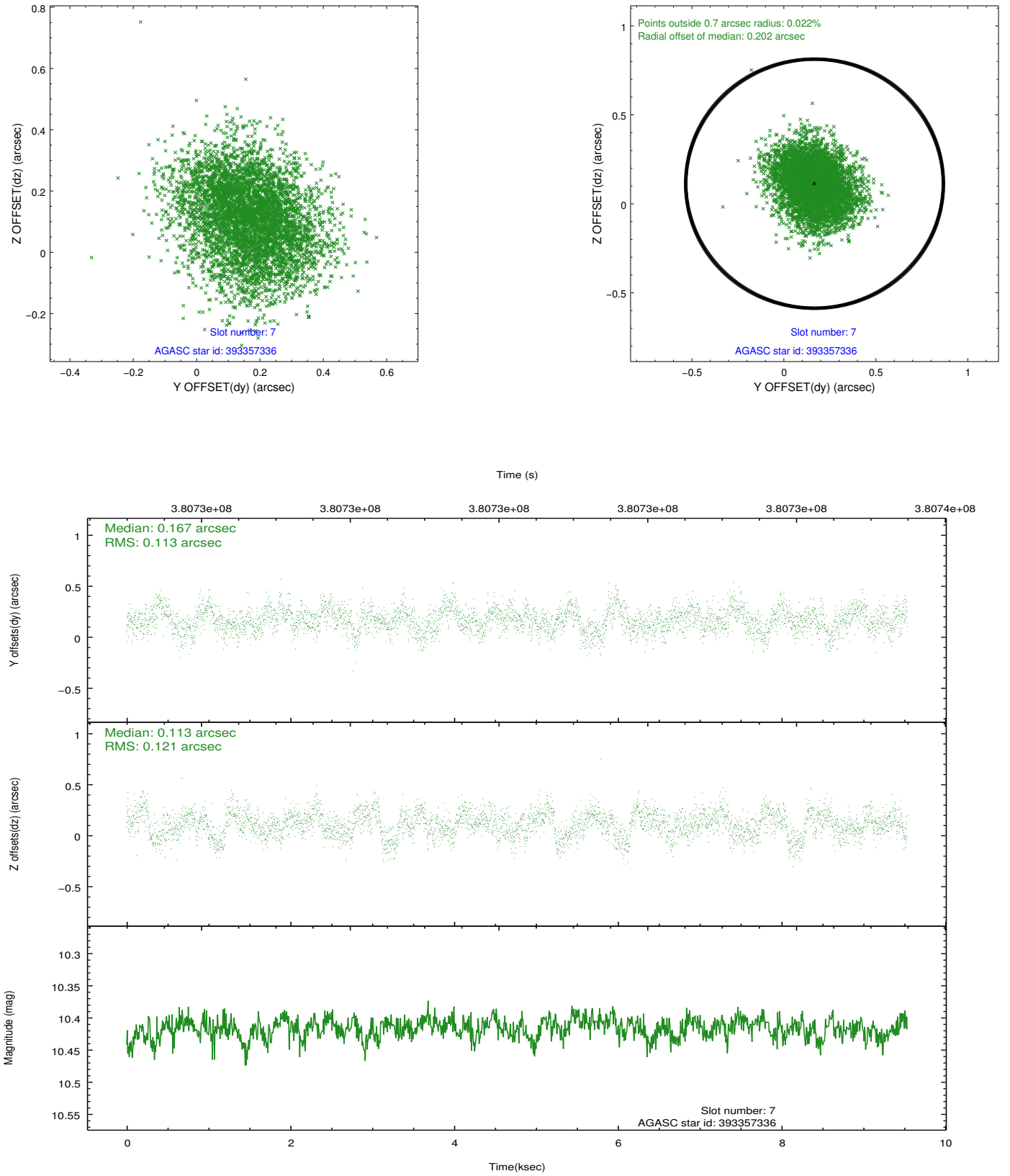
2.4.3 Slot 5



2.4.4 Slot 6

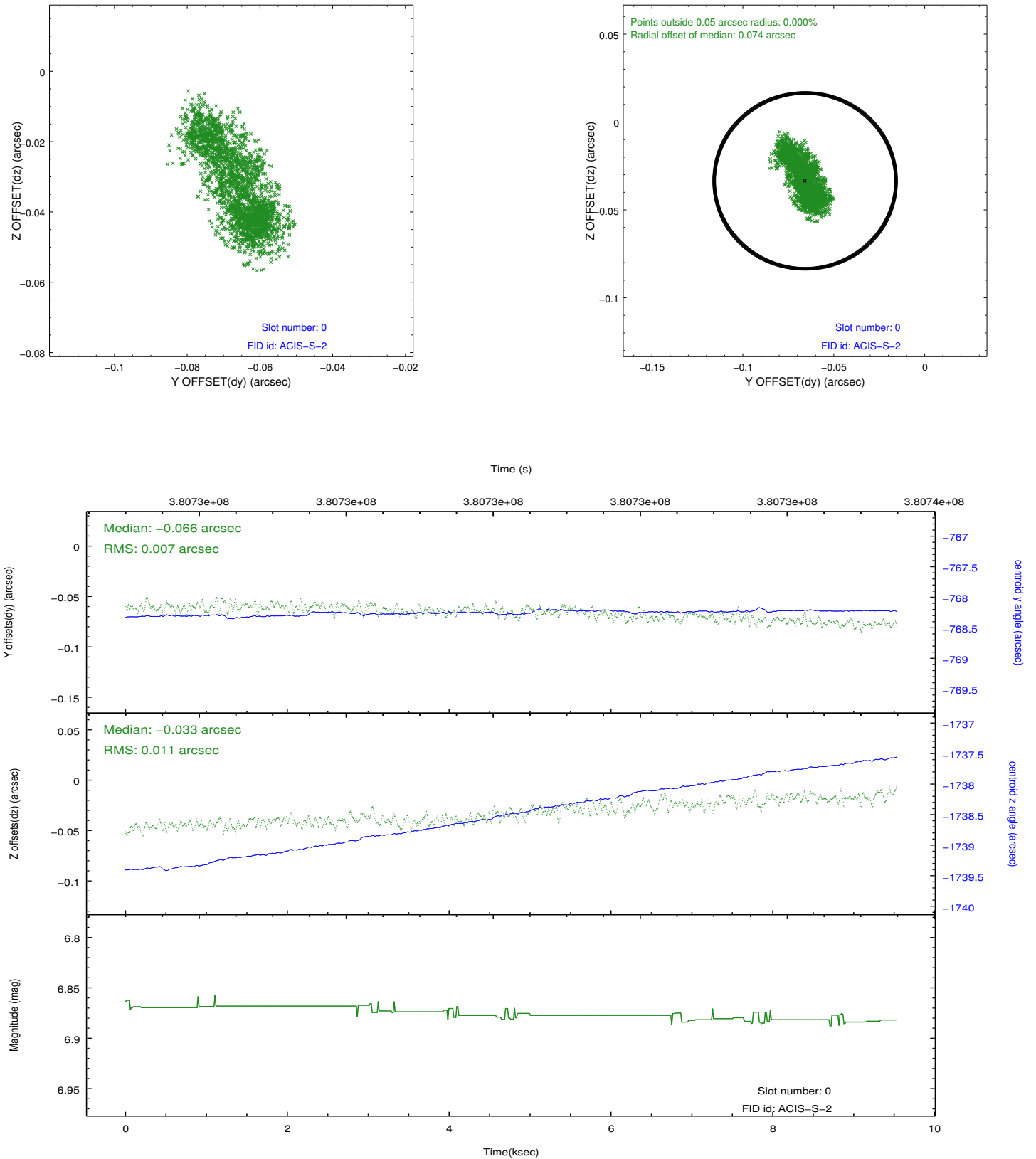


2.4.5 Slot 7

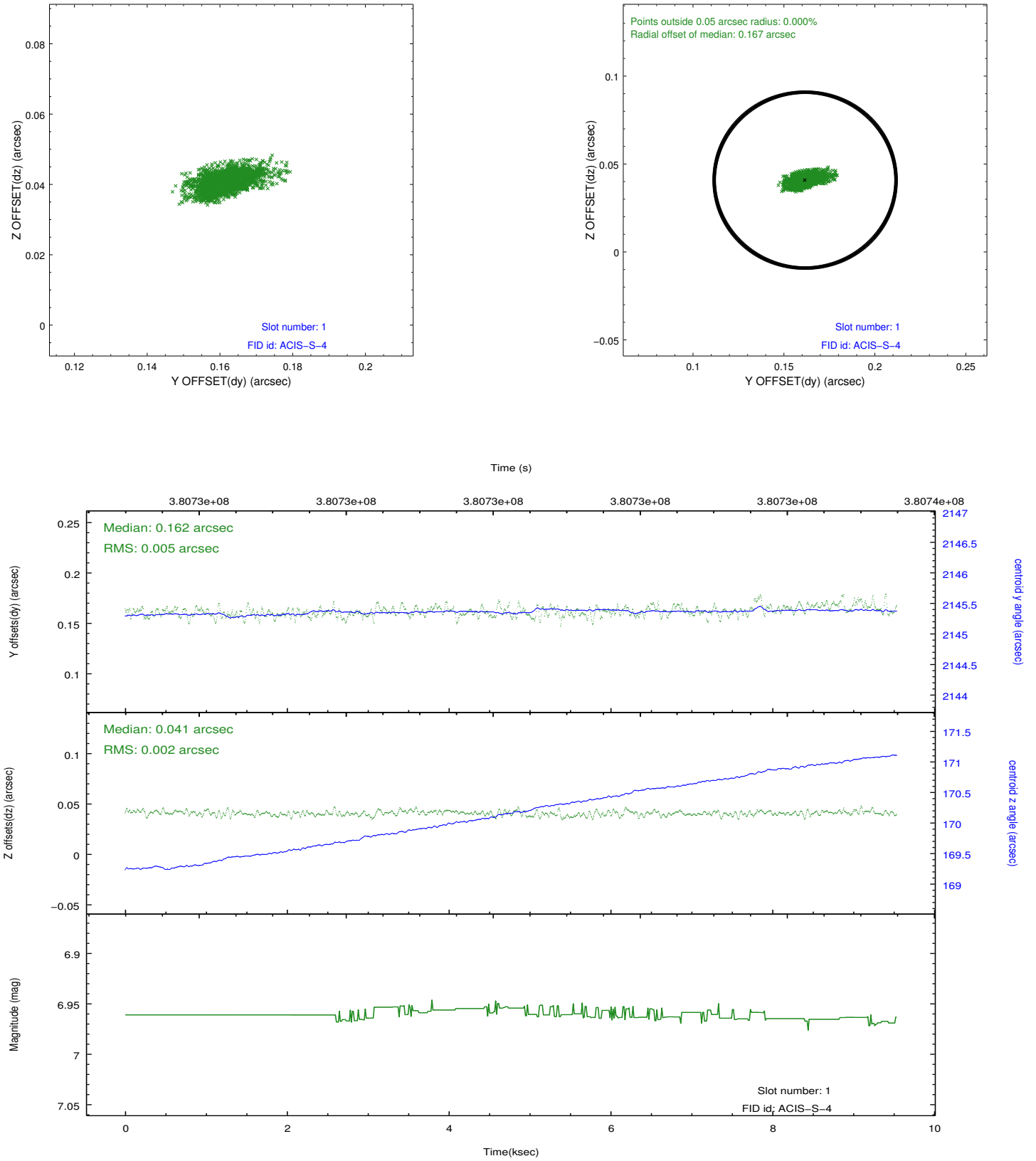


2.5 FID Slots

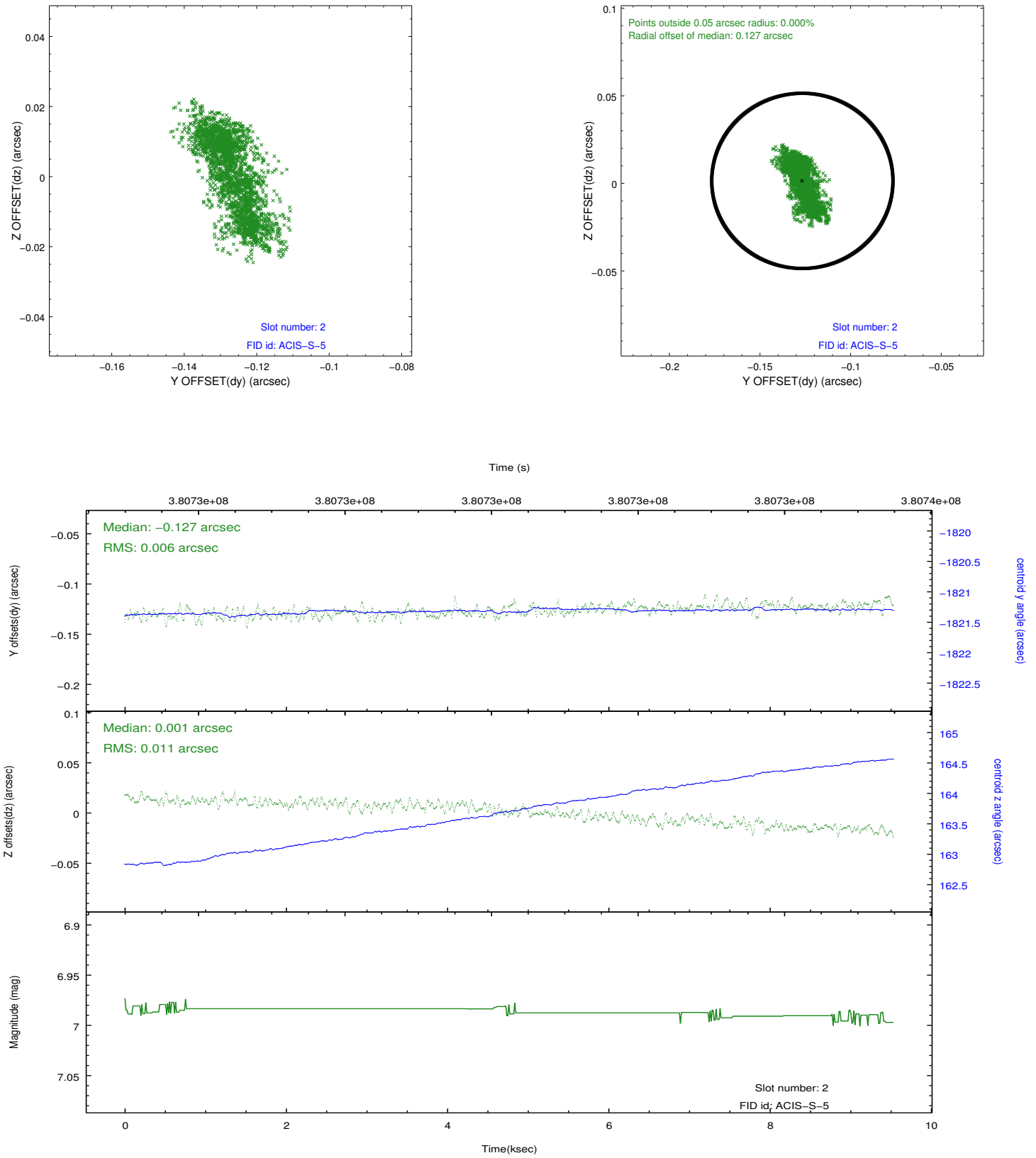
2.5.1 Slot 0



2.5.2 Slot 1



2.5.3 Slot 2



A Summary

A.1 Status

V&V Scientist	Jen Lauer
V&V Date (YYYY-MM-DD)	2012.06.26
V&V Edition	1
V&V Disposition and Status	OK
V&V Charge Time	9.531

A.2 Comments

Joint proposal with HST.