

# V&V Reference Report

## L2 ASCDS Version : 8.4.5

Observation 10329 - L2 Version 2  
Chandra X-Ray Center

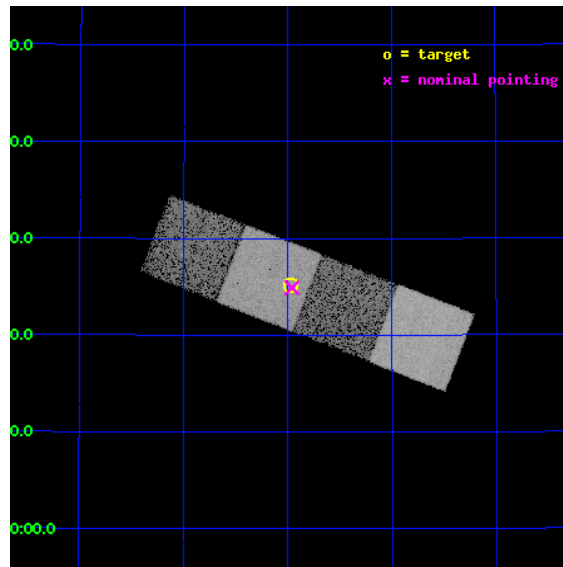
L2 Processing Date : Jun 9 2012

## Contents

<b>1</b>	<b>Front</b>	<b>2</b>
<b>2</b>	<b>OBI</b>	<b>3</b>
2.1	OBI . . . . .	3
2.1.1	Images . . . . .	3
2.1.2	Bias . . . . .	3
2.1.3	Parameters . . . . .	4
2.1.4	Events . . . . .	4
2.2	Compared Parameters . . . . .	5
2.3	Aspect . . . . .	6
2.4	Star Slots . . . . .	9
2.4.1	Slot 3 . . . . .	9
2.4.2	Slot 4 . . . . .	10
2.4.3	Slot 5 . . . . .	11
2.4.4	Slot 6 . . . . .	12
2.4.5	Slot 7 . . . . .	13
2.5	FID Slots . . . . .	14
2.5.1	Slot 0 . . . . .	14
2.5.2	Slot 1 . . . . .	15
2.5.3	Slot 2 . . . . .	16
<b>A</b>	<b>Summary</b>	<b>17</b>
A.1	Status . . . . .	17
A.2	Comments . . . . .	17

# 1 Front

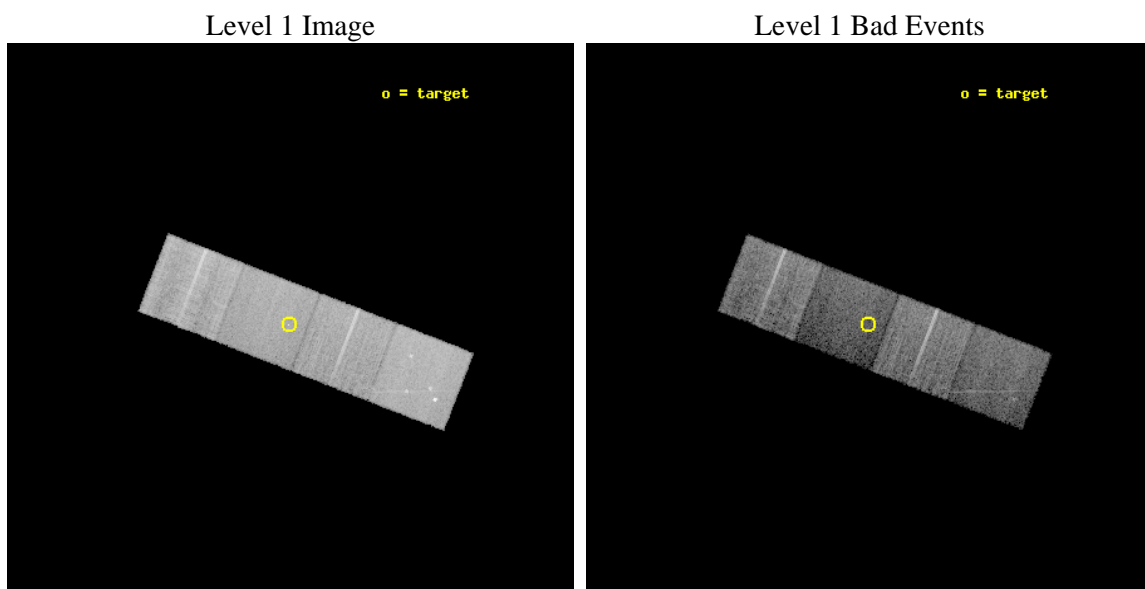
seq_num	701872	Sequence number
obs_id	10329	Observation id
title	Luminous Compton-thick QSOs at z~1	Proposal title
observer	Dr. Roberto Gilli	Principal investigator
object	SDSS J165158.61+432508.6	Source name
dtcycle	0	&#160
cycle	P	events from which exps? Prim/Second/Both
ra_targ	252.994167	Observer's specified target RA [deg]
dec_targ	43.419056	Observer's specified target Dec [deg]
ra_nom	252.99013093931	Nominal RA [deg]
dec_nom	43.415132476421	Nominal Dec [deg]
roll_nom	201.15942214371	Nominal Roll [deg]
revision	2	Processing version of data
ontime	10183.500078321	Sum of GTIs [s]
livetime	10050.445152814	Livetime [s]
ontime5	10183.500078321	Sum of GTIs [s]
ontime6	10180.359068096	Sum of GTIs [s]
ontime7	10183.500078321	Sum of GTIs [s]
ontime8	10180.359088004	Sum of GTIs [s]
l2events	105828	Number of level 2 events



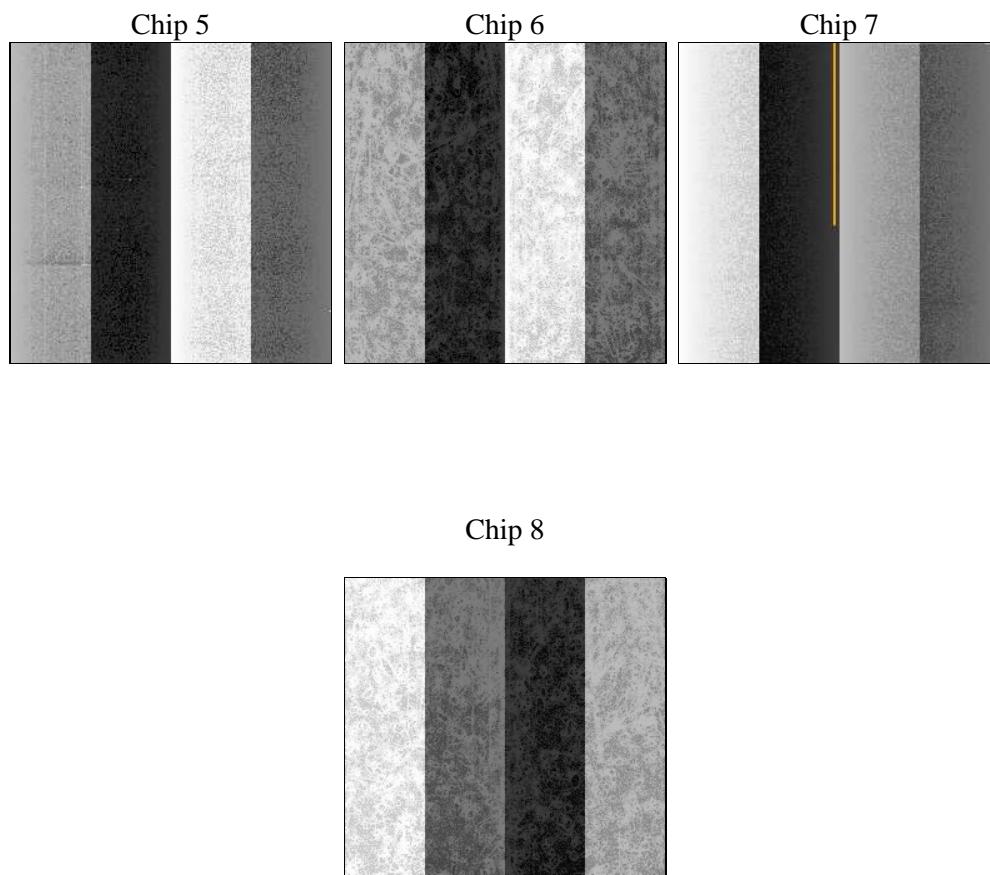
## 2 OBI

### 2.1 OBI

#### 2.1.1 Images



#### 2.1.2 Bias



### 2.1.3 Parameters

obi_num	0	Obi number	sched_exp_time	10000.000000	[s] Scheduled observation exposure time
ascdsver	8.4.5	Processing system revision	ontime	10183.500078321	Sum of GTIs [s]
caldsver	4.4.10	&#160	ontime5	10183.500078321	Sum of GTIs [s]
date	2012-06-09T09:15:58	Date and time of file creation	ontime6	10180.359068096	Sum of GTIs [s]
revision	2	Processing version of data	ontime7	10183.500078321	Sum of GTIs [s]
			ontime8	10180.359088004	Sum of GTIs [s]
			l1events	377564	Number of level 1 events

### 2.1.4 Events

	ccd 5	ccd 6	ccd 7	ccd 8
level 1 events	108440	84086	81464	103574
rejected events	52051	75483	42047	77393
rejected %	47%	89%	51%	74%

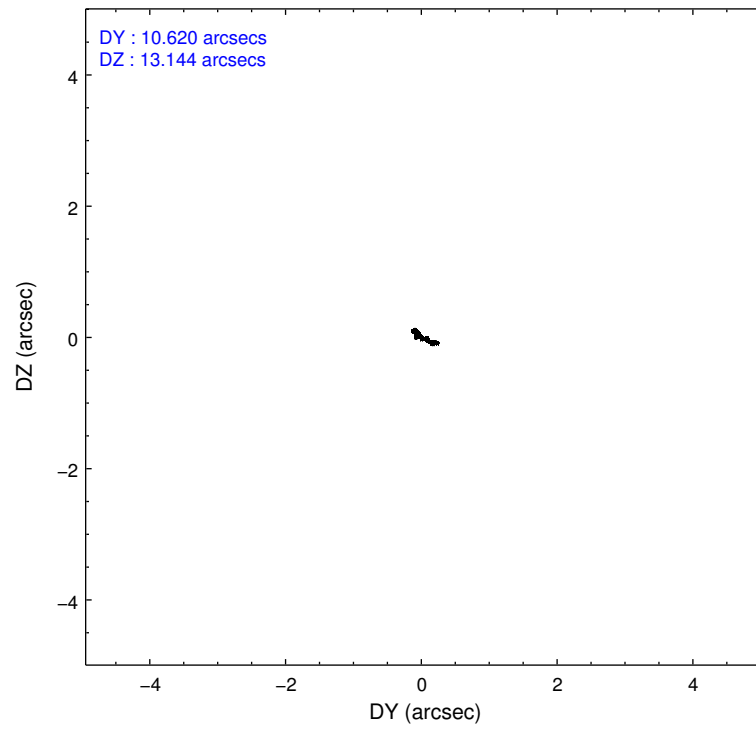
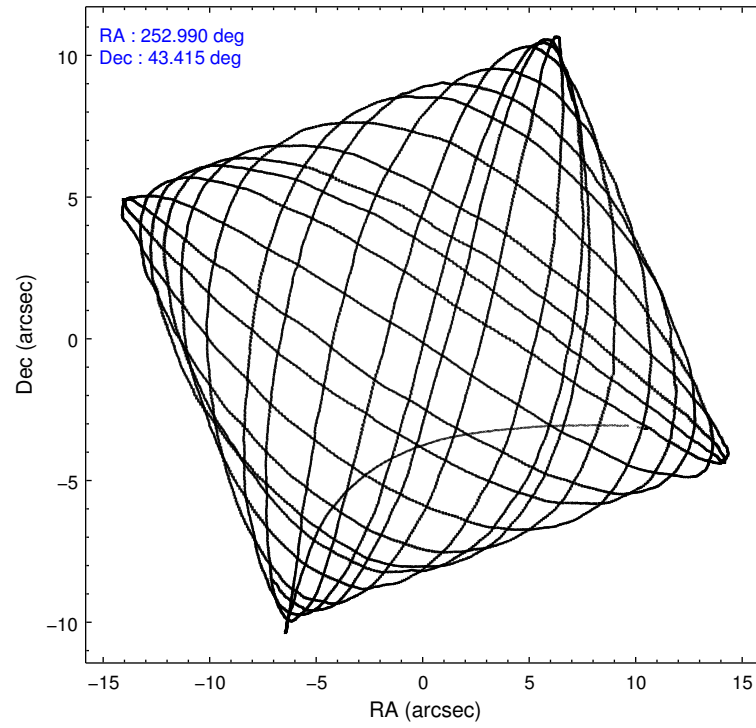
	ccd 5	ccd 6	ccd 7	ccd 8
grade 0 events	6247	3193	4079	7390
	5%	3%	5%	7%
grade 1 events	353	36	117	95
	0%	0%	0%	0%
grade 2 events	17496	1939	8543	6275
	16%	2%	10%	6%
grade 3 events	2346	937	3637	2890
	2%	1%	4%	2%
grade 4 events	2370	889	3740	2685
	2%	1%	4%	2%
grade 5 events	8344	2896	8629	4395
	7%	3%	10%	4%
grade 6 events	28933	1789	20130	7453
	26%	2%	24%	7%
grade 7 events	42351	72407	32589	72391
	39%	86%	40%	69%

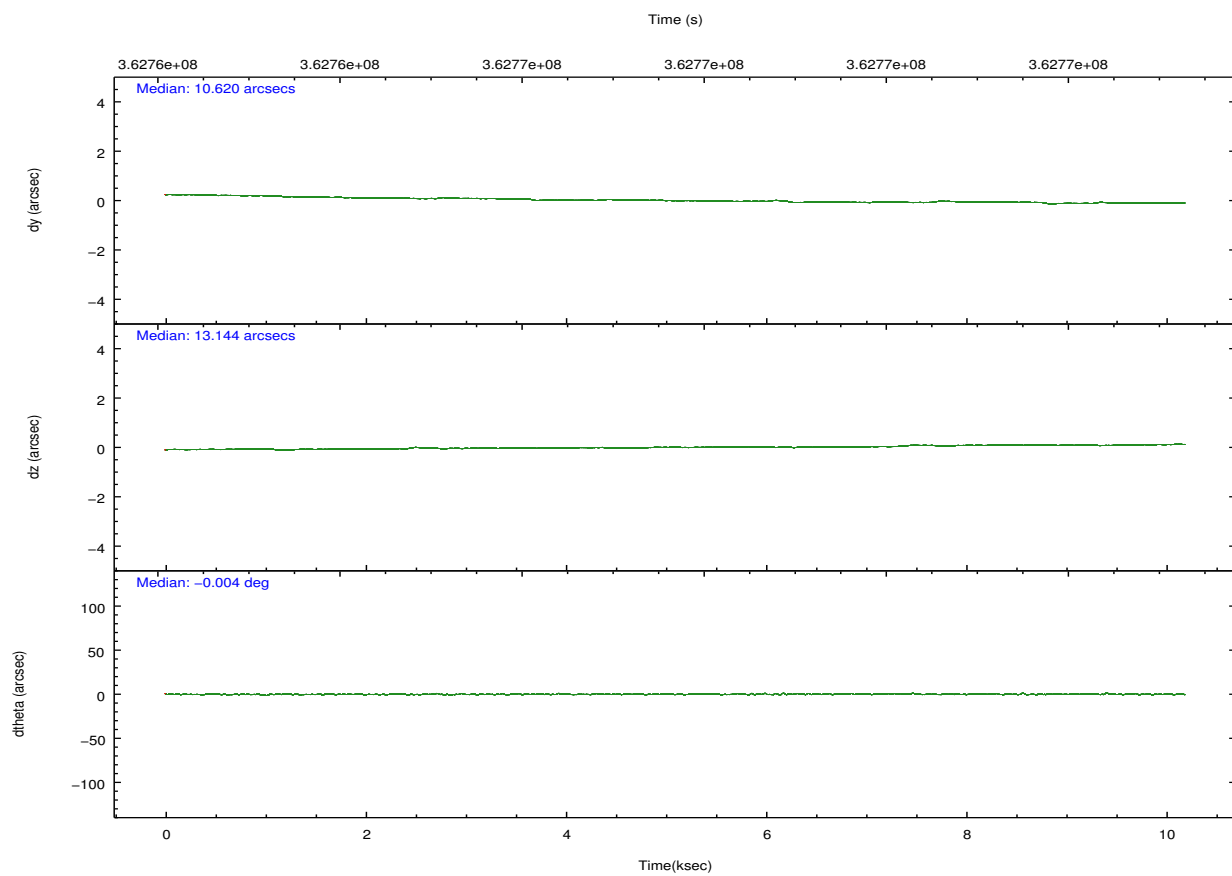
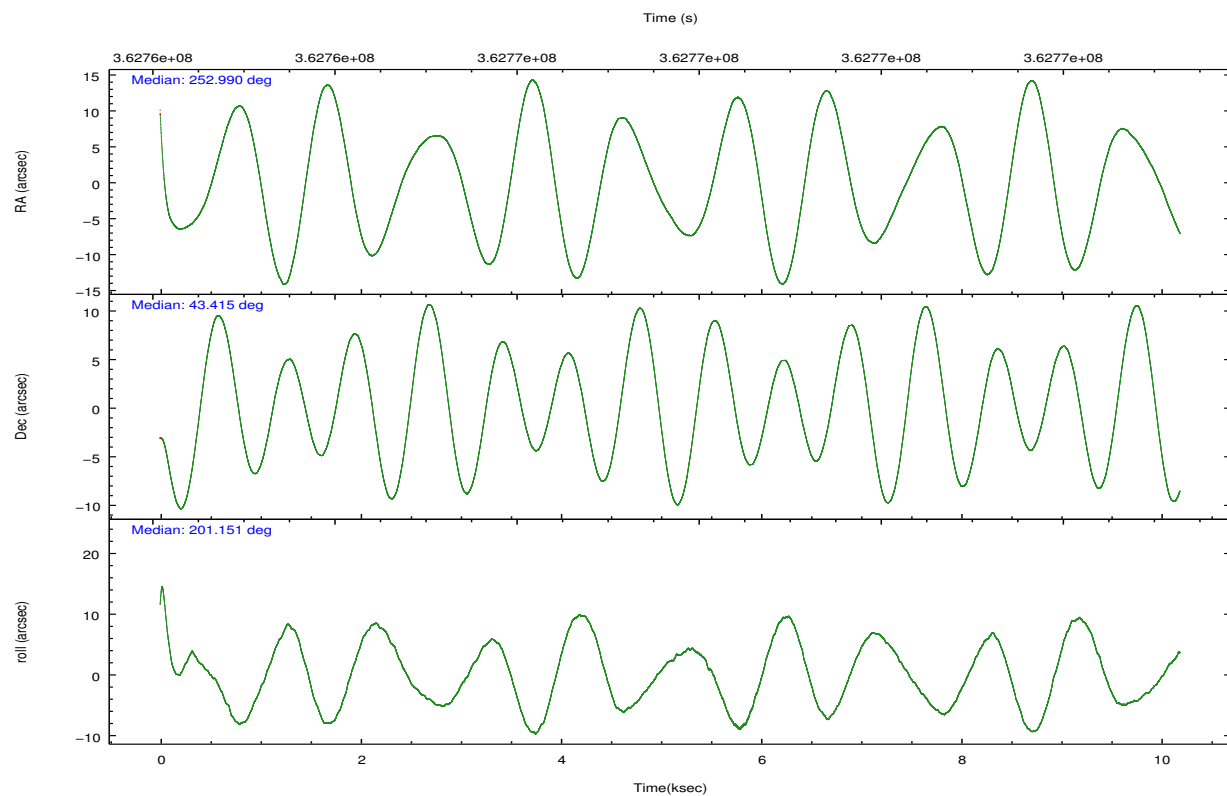


## 2.2 Compared Parameters

Parameter	Planned	Actual	Parameter	Planned	Actual
Instrument	ACIS	ACIS	Obspar format version number	7	7
Detector	ACIS-5678	ACIS-5678	Obspar file type	PREDICTED	ACTUAL
Grating	NONE	NONE	Obspar update status	NONE	UPDATED
Data mode	VFAINT	VFAINT	Number of optional ACIS chips dropped	0	0
Observation mode	POINTING	POINTING	On-chip summing requested	N	N
[deg] Pointing RA	253.013352	252.9901309393138	Subarray requested	NONE	NONE
[deg] Pointing Dec	43.436715	43.41513247642108	Alternating exposures requested	N	N
[deg] Pointing Roll	200.986812	201.1594221437091	[s] Primary exposure time	0.000000	3.1
[mm] SIM focus pos	-0.684267	-0.6828225247311905			
[mm] SIM defocus	0	0.001444936568705701			
[mm] SIM translation stage pos	-190.132523	-190.1400660498719			
[mm] SIM translation stage offset	0	0.00754346686406393			
[s] Observation start time (MET)	362762770.184000	362761600.11107			
Observation start date	2009-06-30T15:25:04	2009-06-30T15:06:40			
[s] Observation end time (MET)	362772770.184000	362773285.62415			
Observation end date	2009-06-30T18:11:44	2009-06-30T18:21:25			
Read mode	TIMED	TIMED			

## 2.3 Aspect



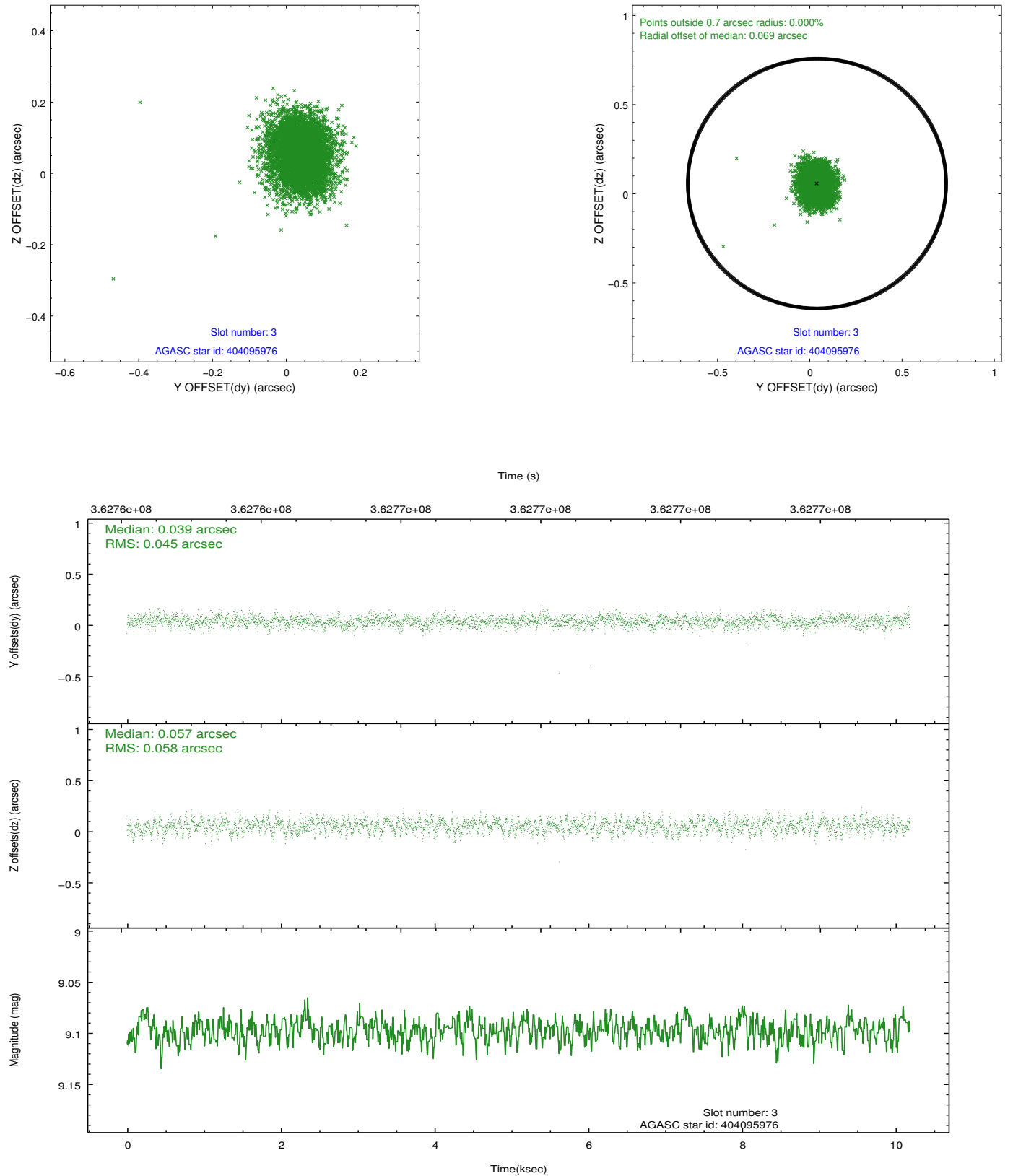


### Slot Statistics

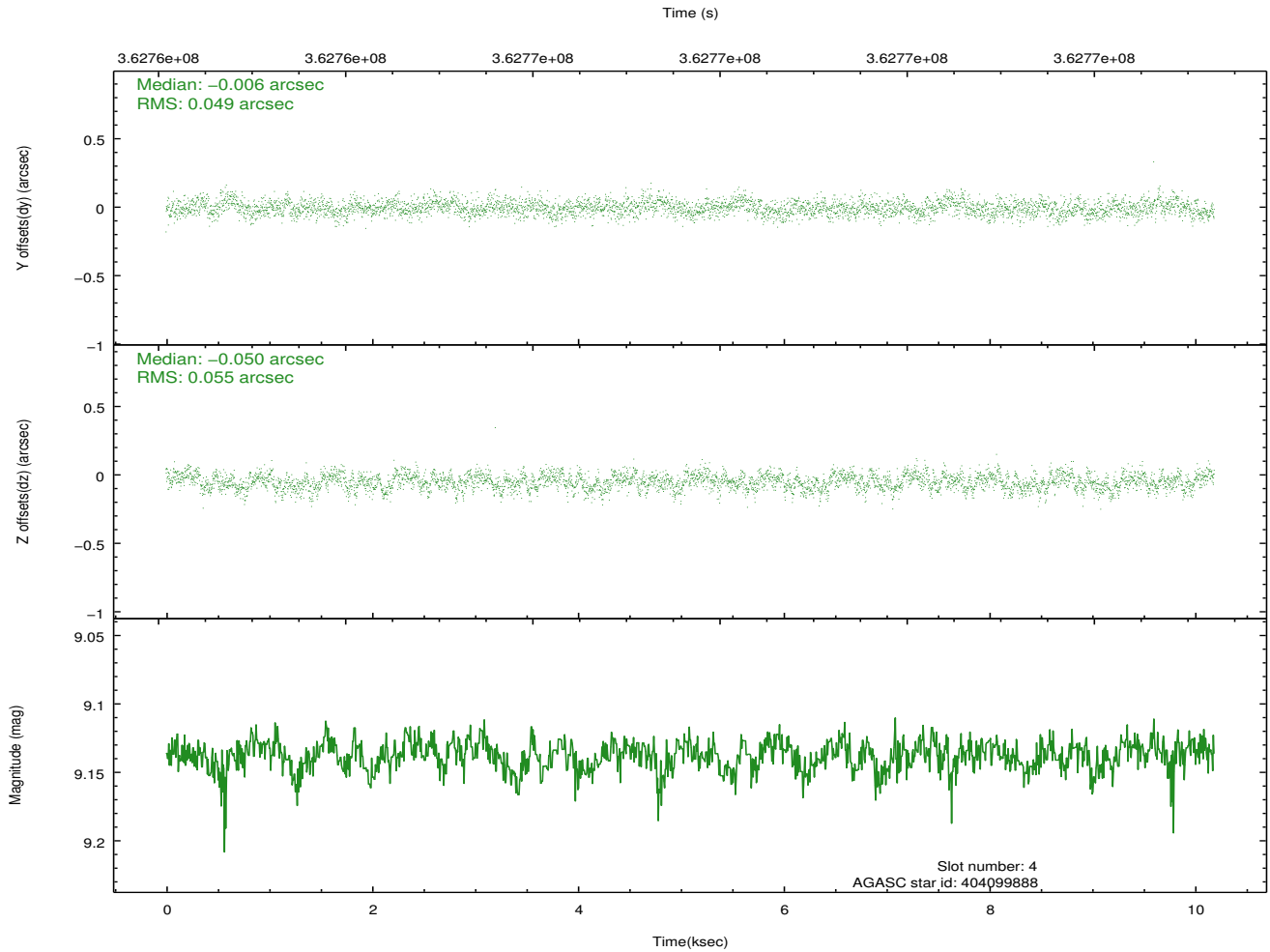
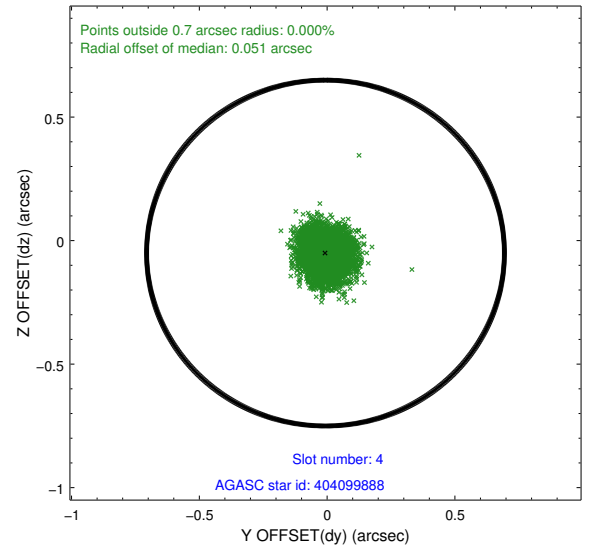
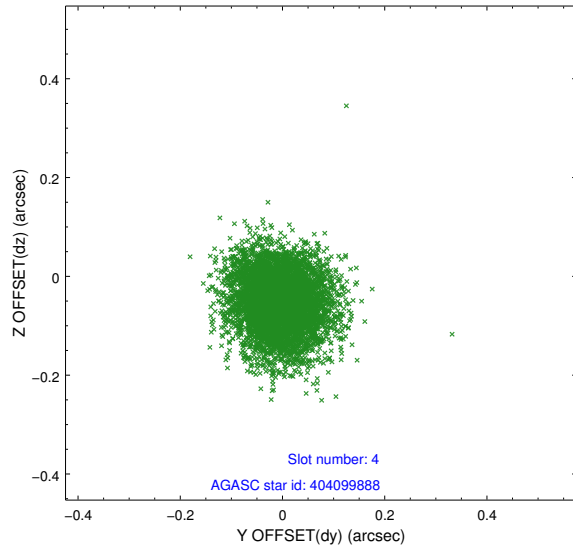
slot	status	id	mag	n_pts	med_dy	med_dz	dr1	dr2	ra	dec	mean_y	mean_z
0	FID	ACIS-S-1	7.09	2485	0.047	-0.040	0.007	0.013	0.000000	0.000000	932.54	-1730.17
1	FID	ACIS-S-4	7.09	2486	0.101	0.009	0.008	0.014	0.000000	0.000000	2150.33	173.47
2	FID	ACIS-S-5	7.13	2486	-0.174	0.043	0.007	0.012	0.000000	0.000000	-1815.84	167.78
3	GUIDE	404095976	9.10	4969	0.039	0.057	0.077	0.126	252.982166	43.945070	-579.18	-1736.92
4	GUIDE	404099888	9.14	4965	-0.006	-0.050	0.079	0.128	253.809119	43.640280	-2201.69	48.60
5	GUIDE	404101488	8.79	4967	0.082	0.007	0.081	0.126	253.391363	43.391094	-865.34	505.11
6	GUIDE	404105368	7.33	4970	-0.128	0.122	0.053	0.083	253.406802	43.783555	-1402.73	-800.86
7	GUIDE	404099920	6.95	4967	0.005	-0.137	0.074	0.119	253.578928	43.406397	-1344.05	626.80

## 2.4 Star Slots

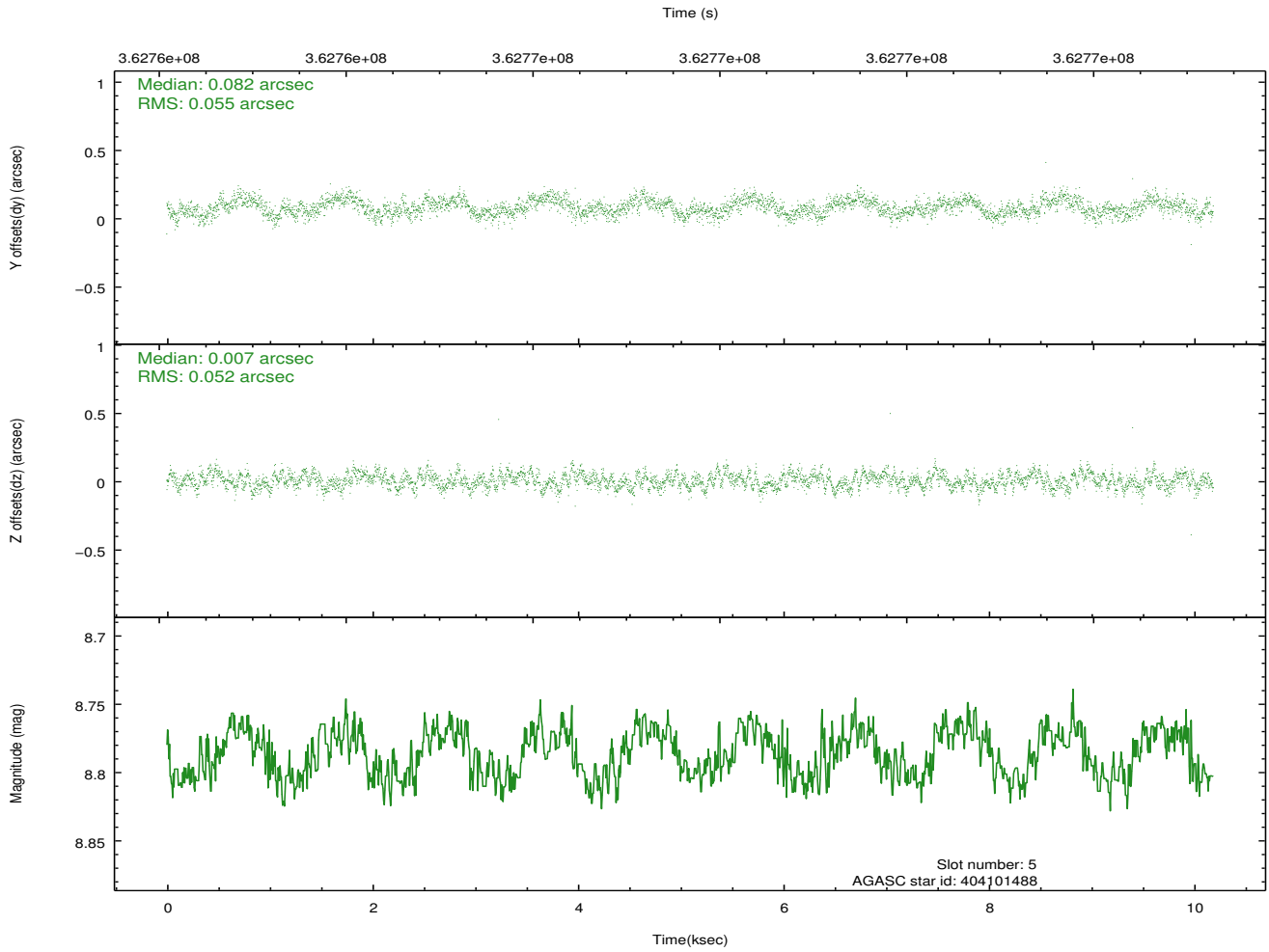
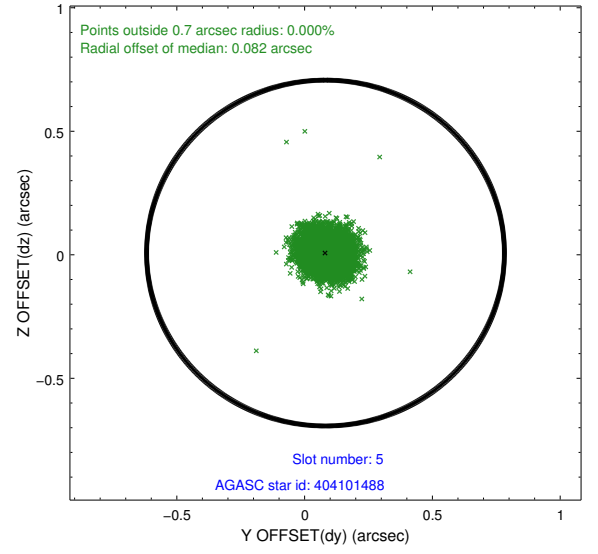
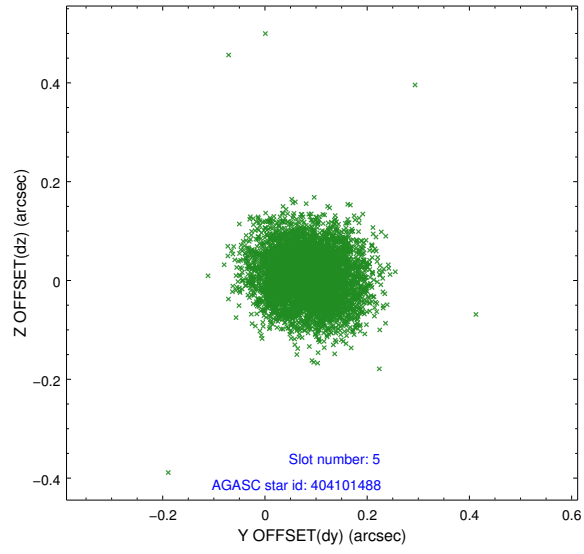
### 2.4.1 Slot 3



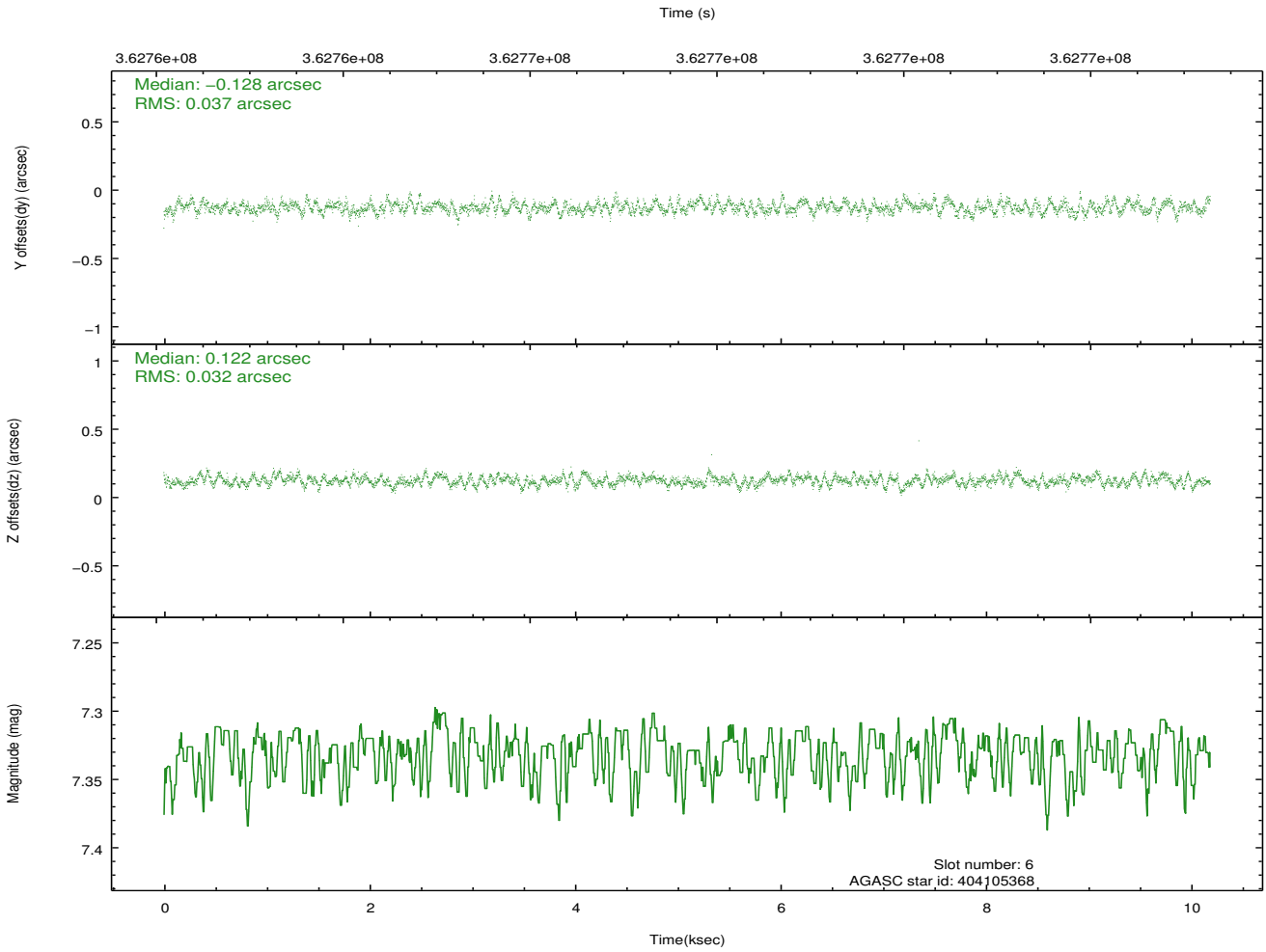
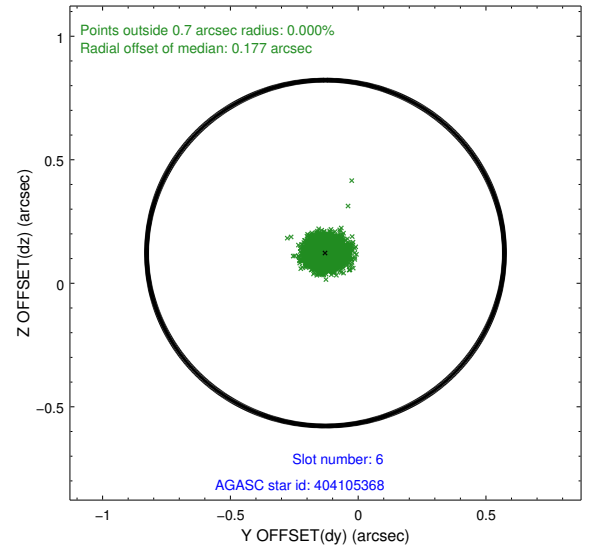
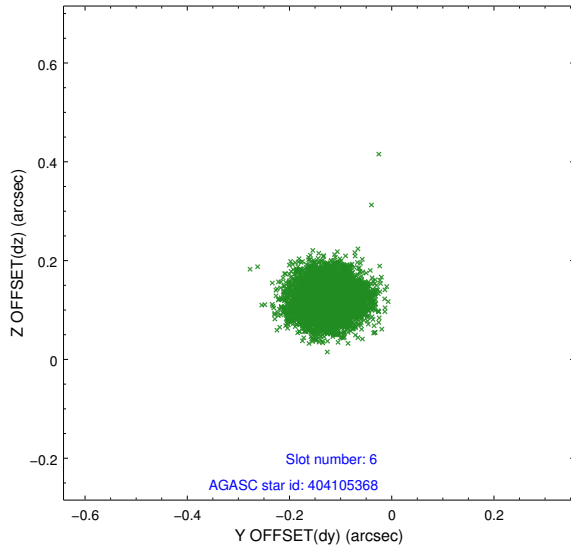
## 2.4.2 Slot 4



### 2.4.3 Slot 5

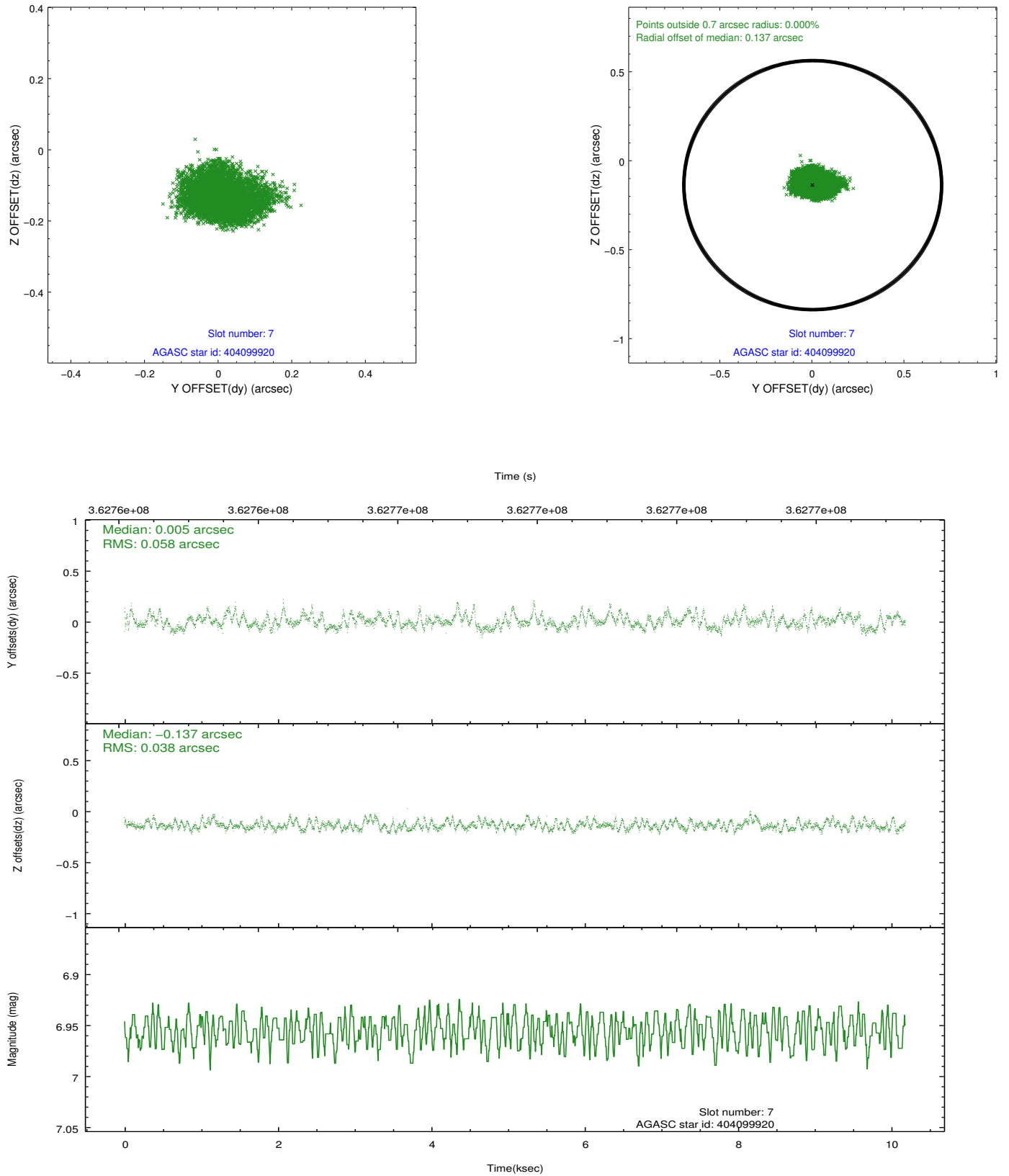


## 2.4.4 Slot 6



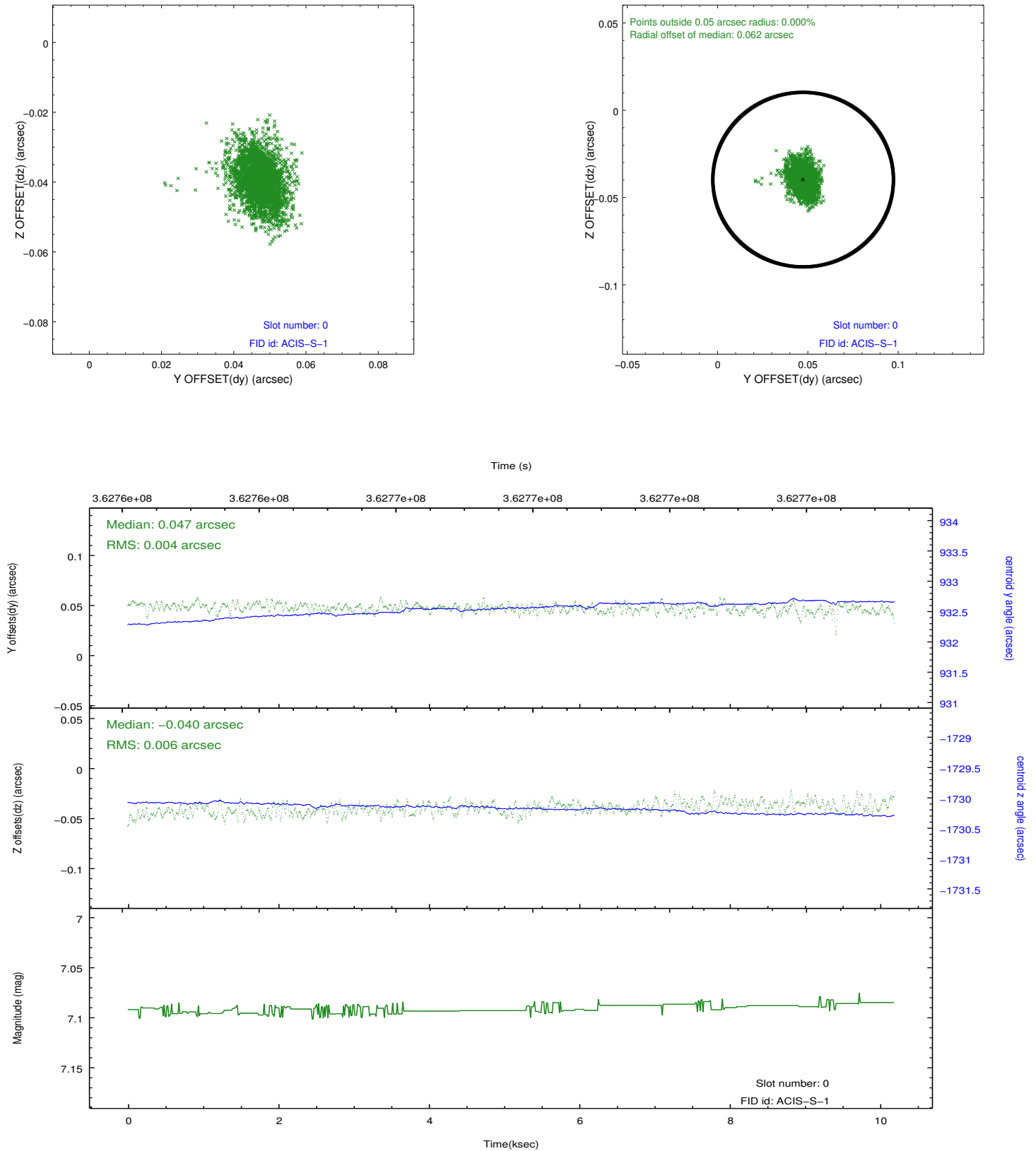


## 2.4.5 Slot 7

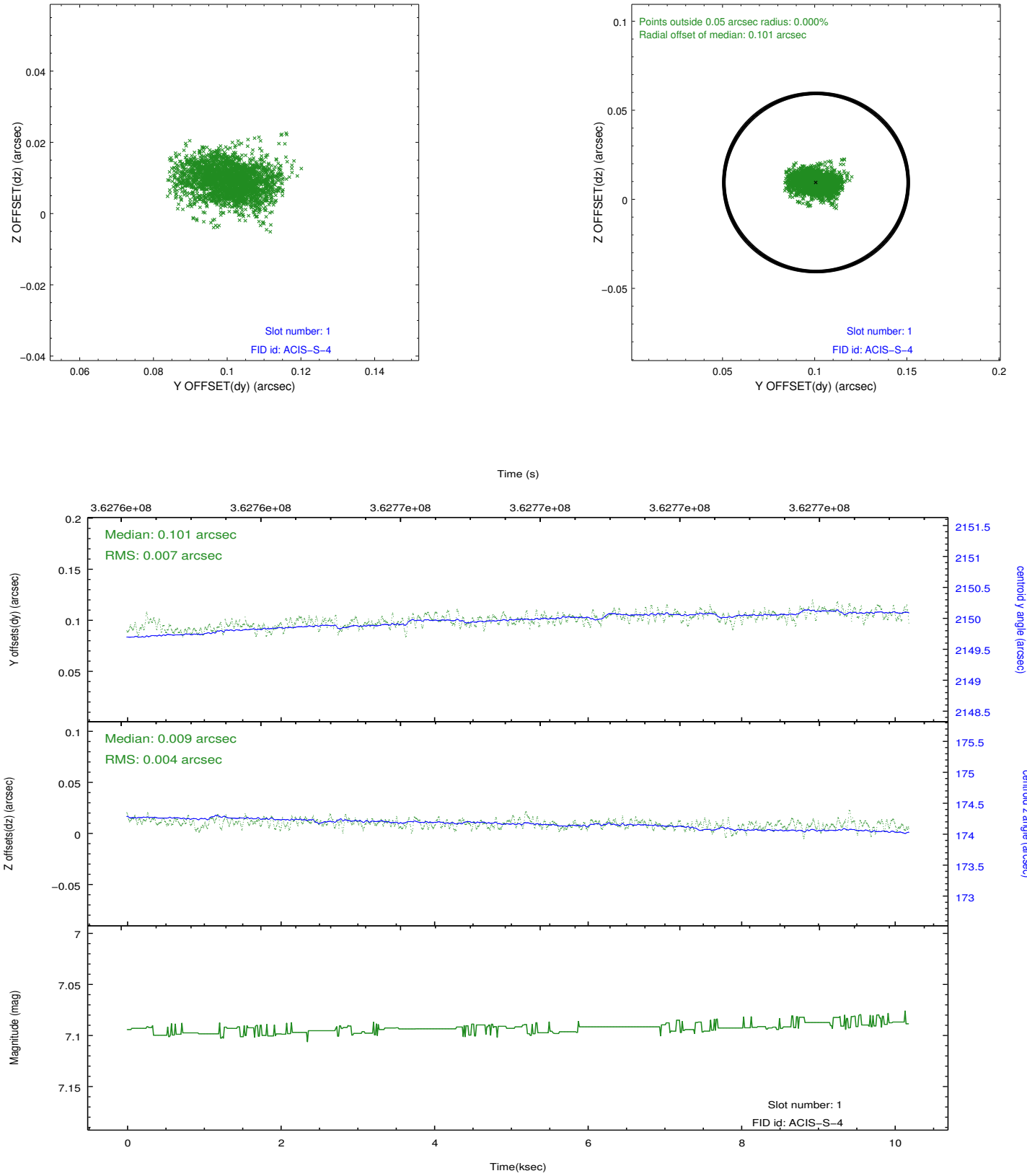


## 2.5 FID Slots

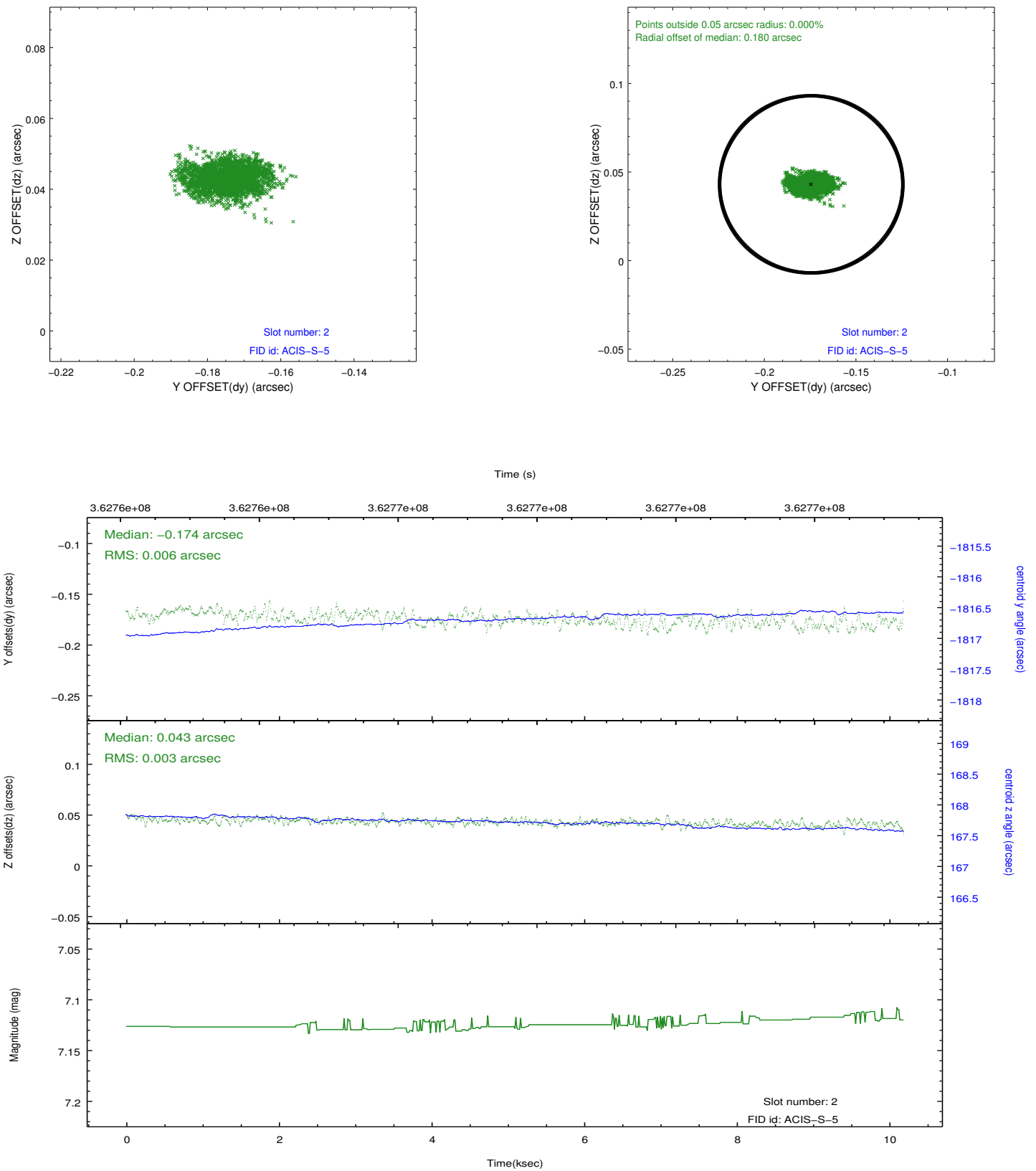
### 2.5.1 Slot 0



## 2.5.2 Slot 1



### 2.5.3 Slot 2



## **A Summary**

### **A.1 Status**

V&V Scientist	Jen Lauer
V&V Date (YYYY-MM-DD)	2012.06.12
V&V Edition	1
V&V Disposition and Status	OK
V&V Charge Time	10.1835

### **A.2 Comments**