

# V&V Reference Report

## L2 ASCDS Version : 8.4.4

Observation 9388 - L2 Version 2  
Chandra X-Ray Center

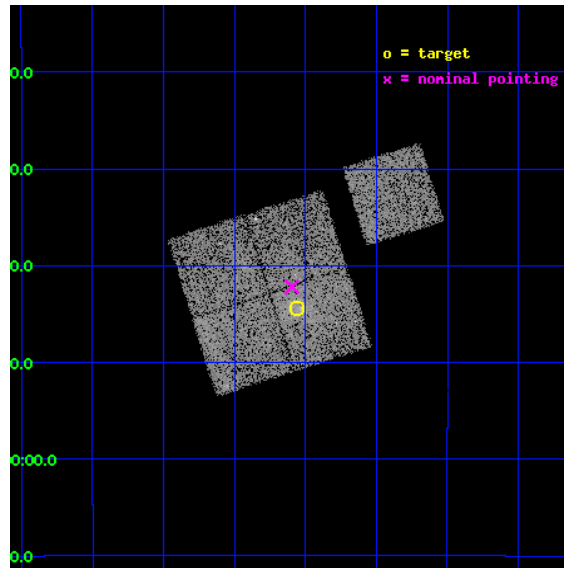
L2 Processing Date : May 4 2012

## Contents

<b>1</b>	<b>Front</b>	<b>2</b>
<b>2</b>	<b>OBI</b>	<b>3</b>
2.1	OBI . . . . .	3
2.1.1	Images . . . . .	3
2.1.2	Bias . . . . .	3
2.1.3	Parameters . . . . .	4
2.1.4	Events . . . . .	4
2.2	Compared Parameters . . . . .	5
2.3	Aspect . . . . .	6
2.4	Star Slots . . . . .	9
2.4.1	Slot 3 . . . . .	9
2.4.2	Slot 4 . . . . .	10
2.4.3	Slot 5 . . . . .	11
2.4.4	Slot 6 . . . . .	12
2.4.5	Slot 7 . . . . .	13
2.5	FID Slots . . . . .	14
2.5.1	Slot 0 . . . . .	14
2.5.2	Slot 1 . . . . .	15
2.5.3	Slot 2 . . . . .	16
<b>A</b>	<b>Summary</b>	<b>17</b>
A.1	Status . . . . .	17
A.2	Comments . . . . .	17

# 1 Front

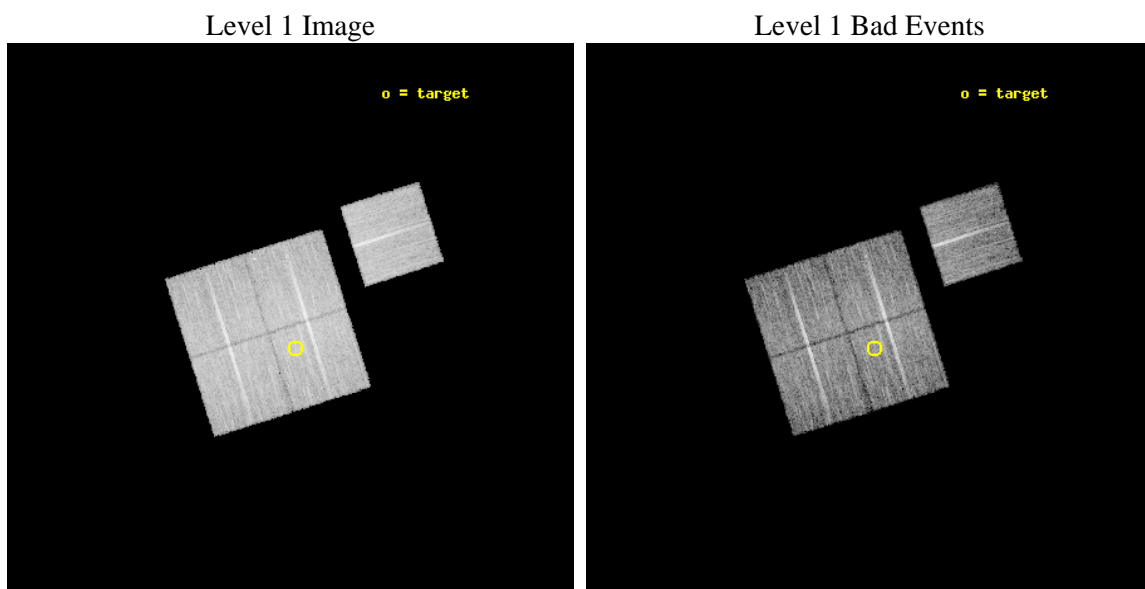
seq_num	800725	Sequence number
obs_id	9388	Observation id
title	SCALING RELATIONS FOR LOW-MASS GALAXY CLUSTERS AND GROUPS	Proposal
observer	Dr. Alexey Vikhlinin	Principal investigator
object	cl1206-0744	Source name
dtcycle	0	&#160
cycle	P	events from which exps? Prim/Second/Both
ra_targ	181.639583	Observer's specified target RA [deg]
dec_targ	-7.74	Observer's specified target Dec [deg]
ra_nom	181.64888002254	Nominal RA [deg]
dec_nom	-7.7033830108569	Nominal Dec [deg]
roll_nom	72.403773993648	Nominal Roll [deg]
revision	2	Processing version of data
ontime	10143.200078011	Sum of GTIs [s]
livetime	10010.671701676	Livetime [s]
ontime0	10143.200078011	Sum of GTIs [s]
ontime1	10140.059087753	Sum of GTIs [s]
ontime2	10140.059117734	Sum of GTIs [s]
ontime3	10143.200078011	Sum of GTIs [s]
ontime6	10143.200078011	Sum of GTIs [s]
l2events	36808	Number of level 2 events



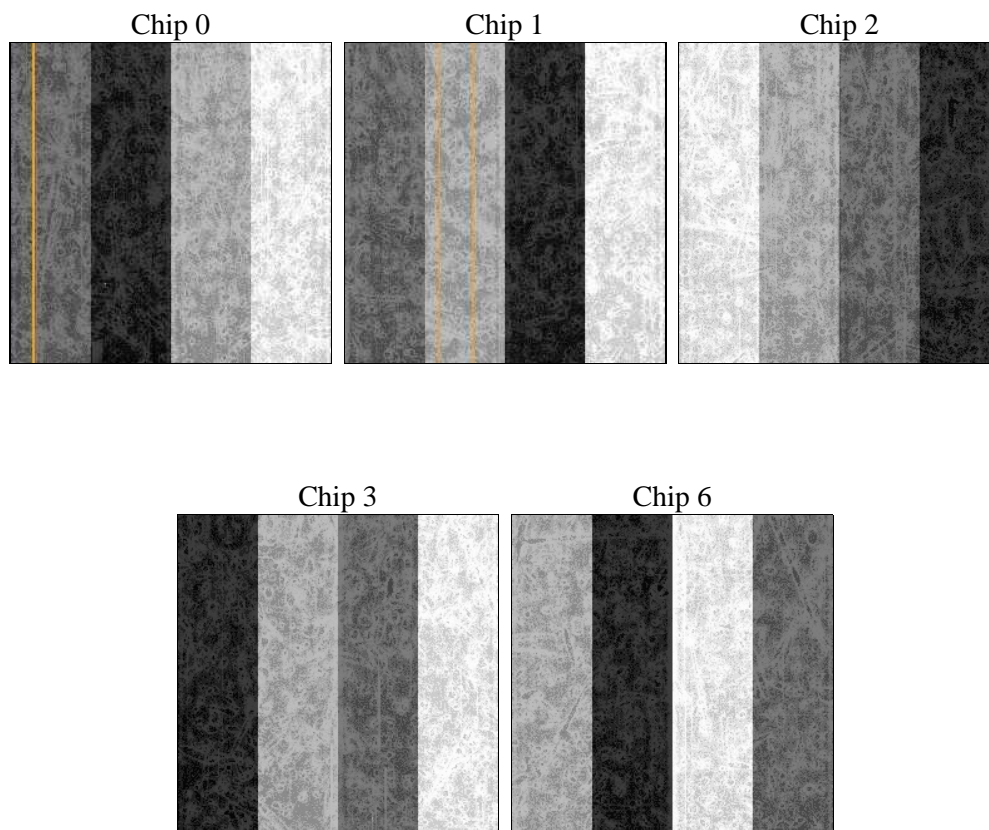
## 2 OBI

### 2.1 OBI

#### 2.1.1 Images



#### 2.1.2 Bias



### 2.1.3 Parameters

obi_num	0	Obi number	sched_exp_time	10000.000000	[s] Scheduled observation exposure time
ascdsver	8.4.4	Processing system revision	ontime	10143.200078011	Sum of GTIs [s]
caldbver	4.4.9	&#160	ontime0	10143.200078011	Sum of GTIs [s]
date	2012-05-04T13:54:44	Date and time of file creation	ontime1	10140.059087753	Sum of GTIs [s]
revision	2	Processing version of data	ontime2	10140.059117734	Sum of GTIs [s]
			ontime3	10143.200078011	Sum of GTIs [s]
			ontime6	10143.200078011	Sum of GTIs [s]
			l1events	430201	Number of level 1 events

### 2.1.4 Events

	ccd 0	ccd 1	ccd 2	ccd 3	ccd 6
level 1 events	82149	83235	88703	89674	86440
rejected events	73745	73772	80296	80207	78089
rejected %	89%	88%	90%	89%	90%

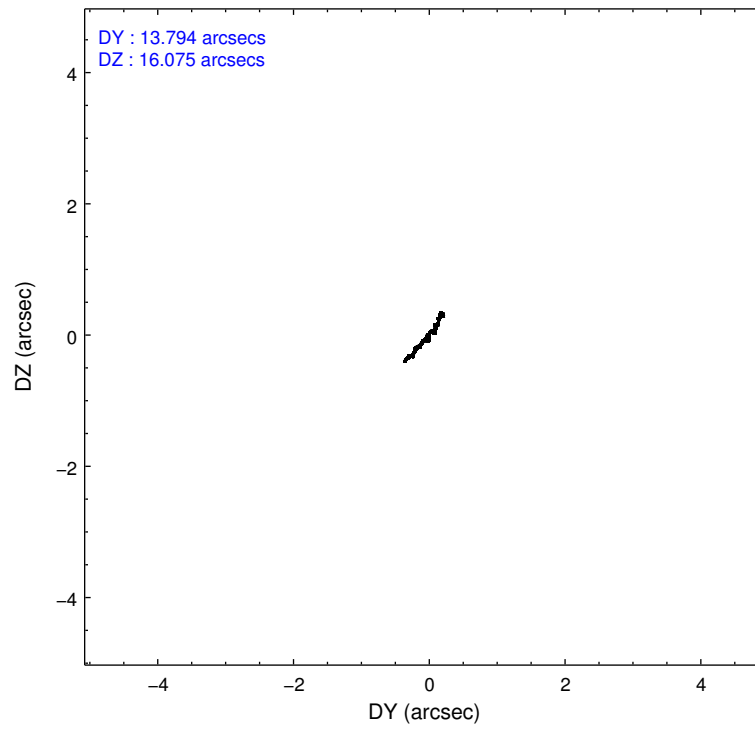
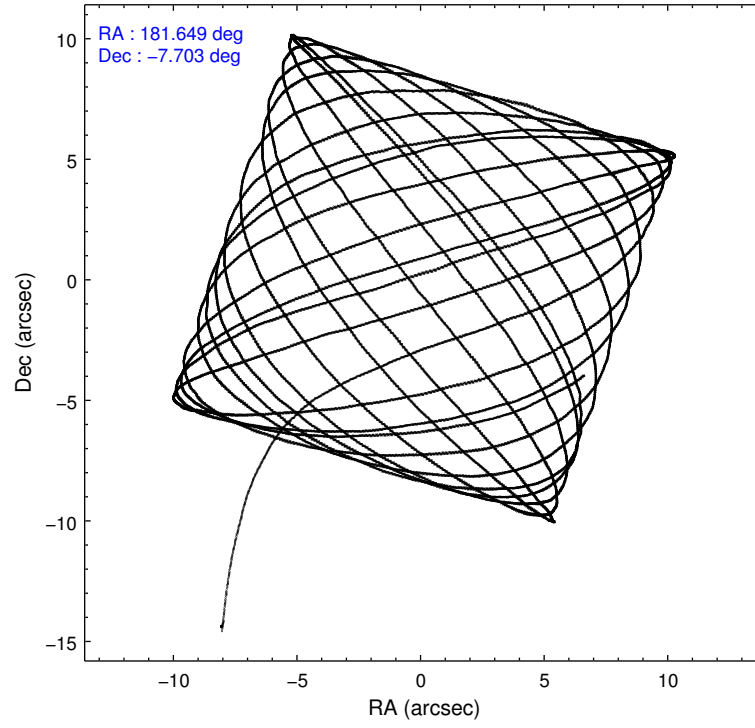
	ccd 0	ccd 1	ccd 2	ccd 3	ccd 6
grade 0 events	3233	3754	3450	4449	3002
	3%	4%	3%	4%	3%
grade 1 events	55	48	60	69	44
	0%	0%	0%	0%	0%
grade 2 events	2171	2267	2040	1899	2002
	2%	2%	2%	2%	2%
grade 3 events	968	1031	866	986	947
	1%	1%	0%	1%	1%
grade 4 events	913	945	946	937	973
	1%	1%	1%	1%	1%
grade 5 events	2947	3350	2800	3502	3379
	3%	4%	3%	3%	3%
grade 6 events	1577	1912	1533	1686	1900
	1%	2%	1%	1%	2%
grade 7 events	70285	69928	77008	76146	74193
	85%	84%	86%	84%	85%

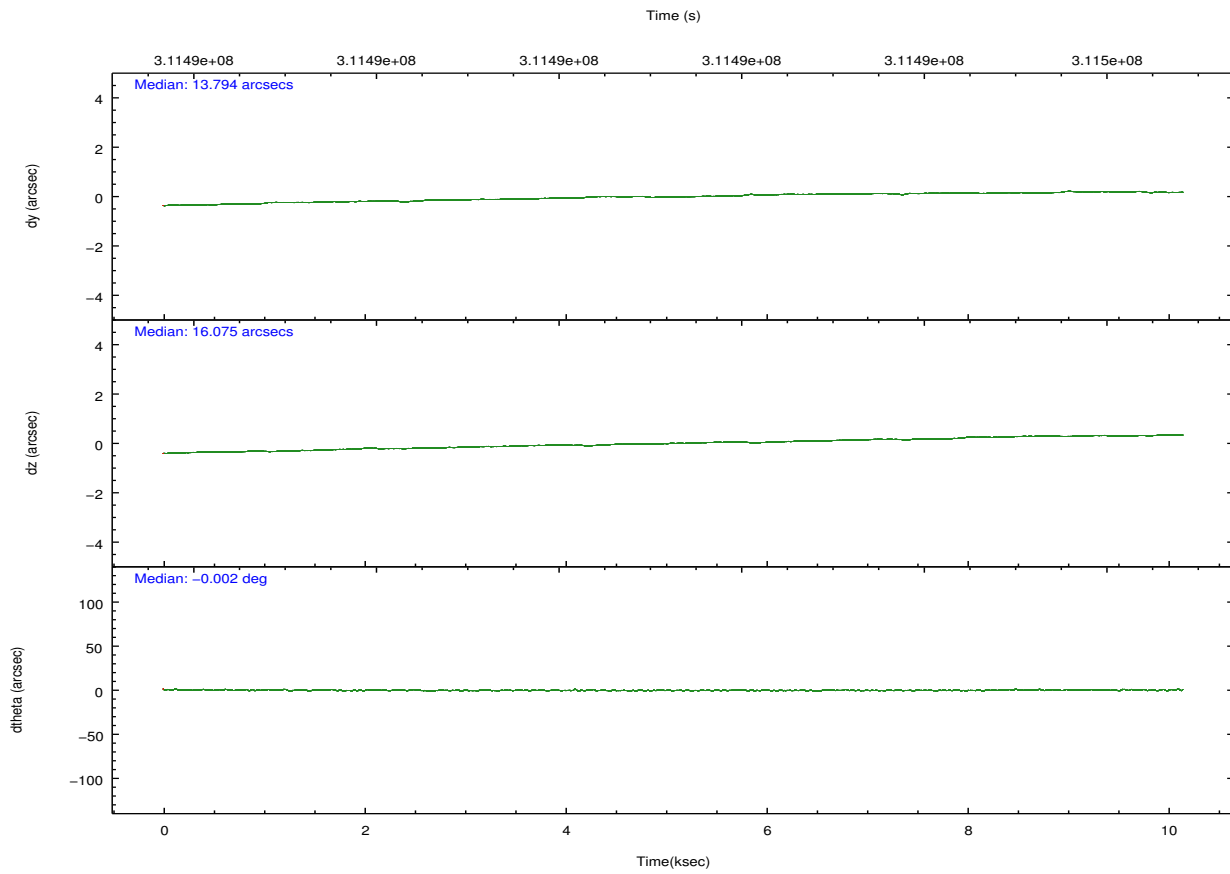
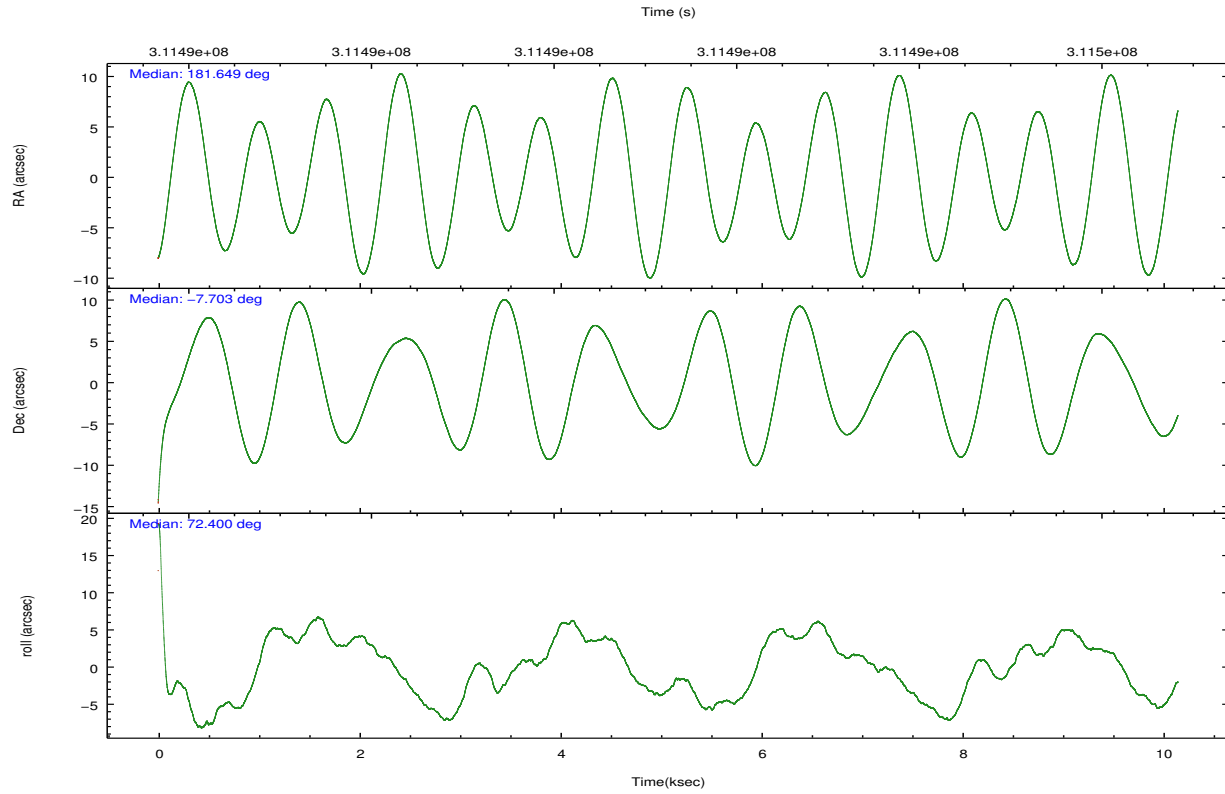


## 2.2 Compared Parameters

Parameter	Planned	Actual	Parameter	Planned	Actual
Instrument	ACIS	ACIS	Obspar format version number	7	7
Detector	ACIS-01236	ACIS-01236	Obspar file type	PREDICTED	ACTUAL
Grating	NONE	NONE	Obspar update status	NONE	UPDATED
Data mode	VFAINT	VFAINT	CCD I0 on	Y	Y
Observation mode	POINTING	POINTING	CCD I1 on	Y	Y
[deg] Pointing RA	181.654955	181.6488800225426	CCD I2 on	Y	Y
[deg] Pointing Dec	-7.730185	-7.703383010856883	CCD I3 on	Y	Y
[deg] Pointing Roll	72.195878	72.40377399364787	CCD S0 on	N	N
[mm] SIM focus pos	-0.782348	-0.7809083437167272	CCD S1 on	N	N
[mm] SIM defocus	0	0.001439871863259334	CCD S2 on	O1	Y
[mm] SIM translation stage pos	-228.592463	-228.6015472178352	CCD S3 on	N	N
[mm] SIM translation stage offset	-5	-4.990905785094469	CCD S4 on	N	N
[s] Observation start time (MET)	311486314.184000	311485067.23221	CCD S5 on	N	N
Observation start date	2007-11-15T03:57:29	2007-11-15T03:37:47	Number of optional ACIS chips dropped	0	0
[s] Observation end time (MET)	311496314.184000	311497407.2078	On-chip summing requested	N	N
Observation end date	2007-11-15T06:44:09	2007-11-15T07:03:27	Subarray requested	NONE	NONE
Read mode	TIMED	TIMED	Alternating exposures requested	N	N
			[s] Primary exposure time	0.000000	3.1

## 2.3 Aspect



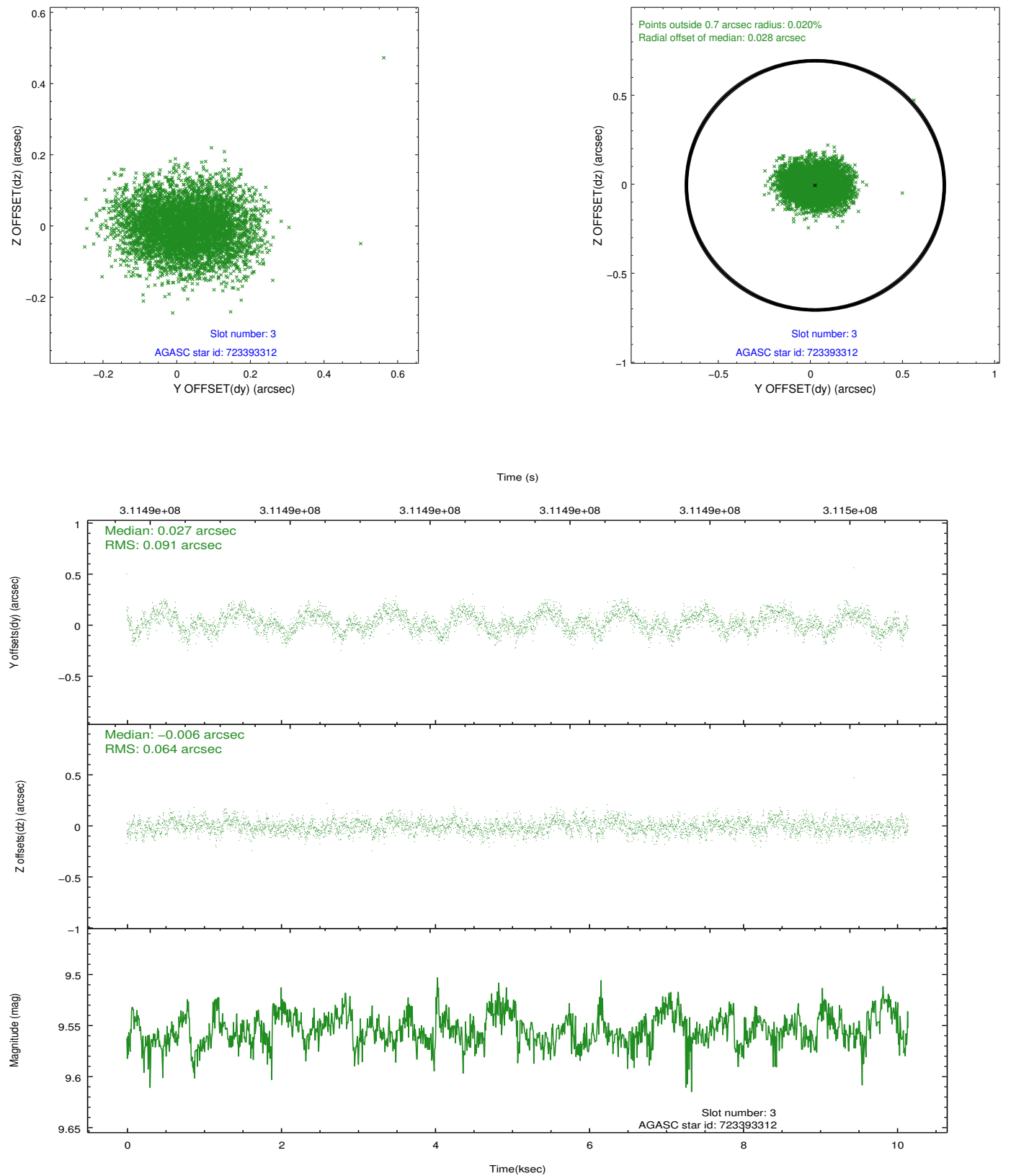


### Slot Statistics

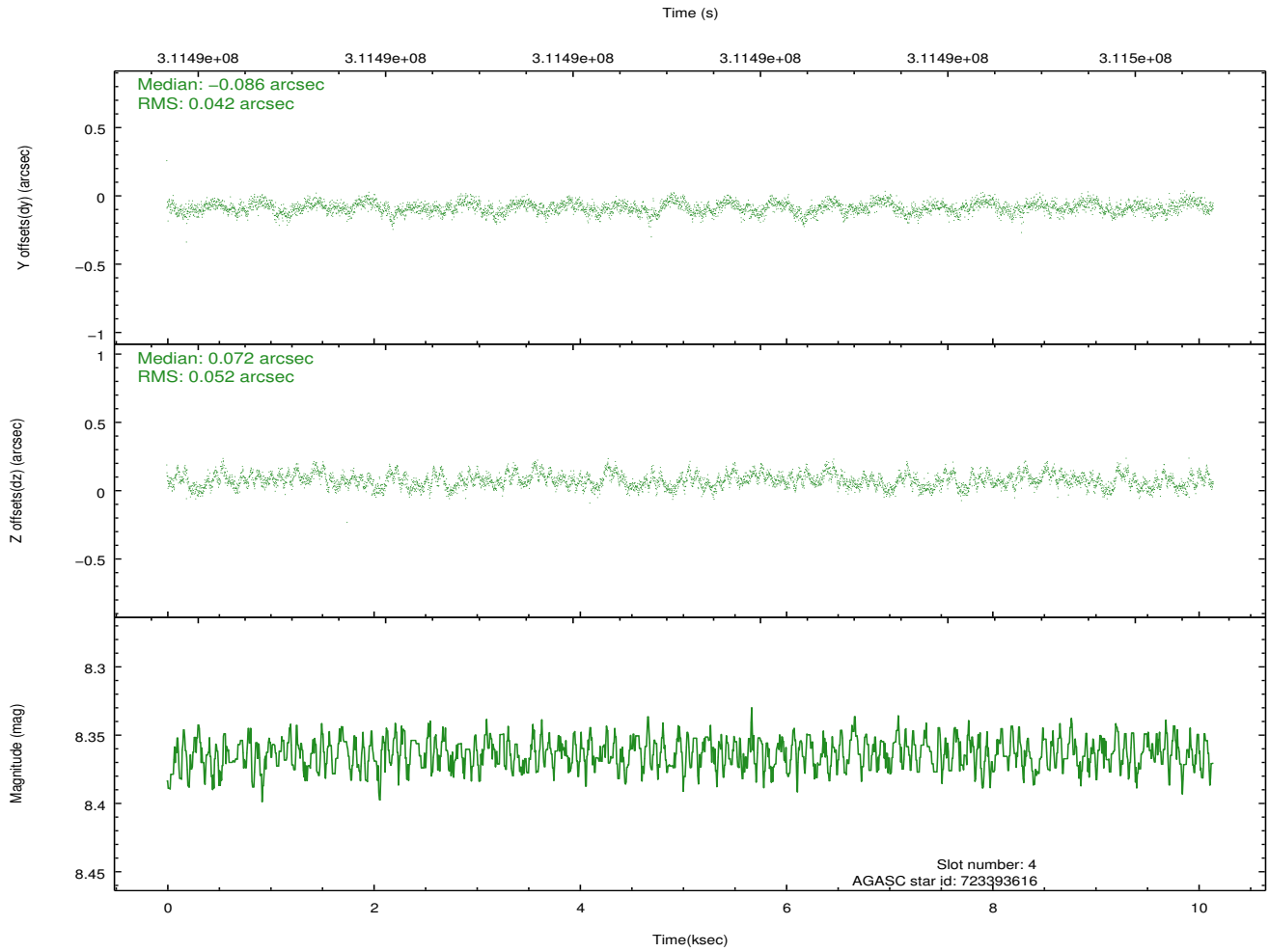
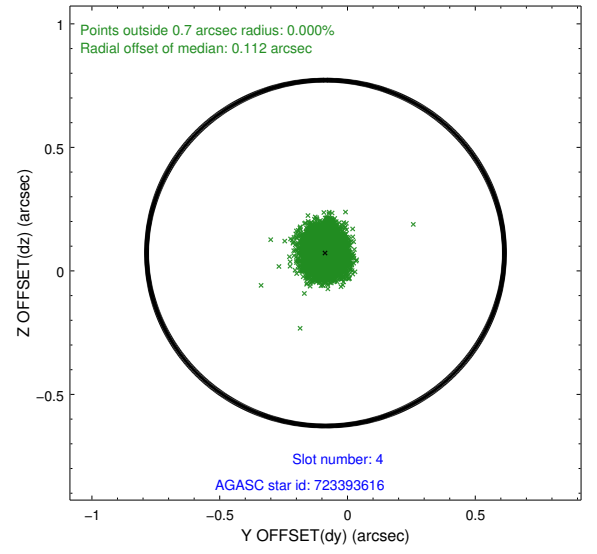
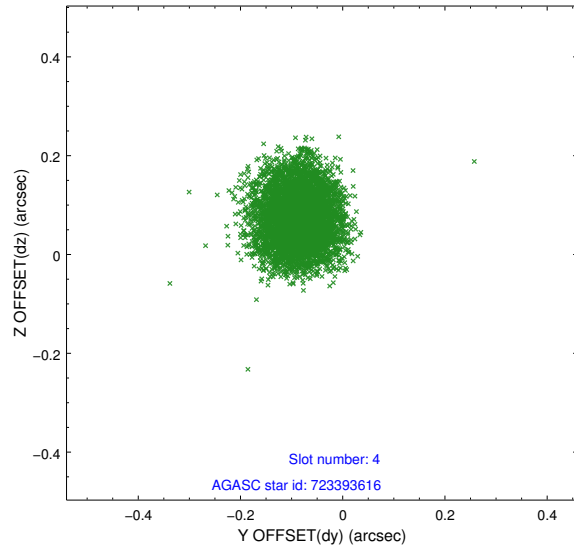
slot	status	id	mag	n_pts	med_dy	med_dz	dr1	dr2	ra	dec	mean_y	mean_z
0	FID	ACIS-I-1	7.23	2476	0.071	-0.018	0.008	0.014	0.000000	0.000000	925.70	-942.13
1	FID	ACIS-I-5	7.21	2476	-0.248	0.067	0.007	0.012	0.000000	0.000000	-1822.45	955.12
2	FID	ACIS-I-6	7.23	2476	0.086	0.021	0.009	0.014	0.000000	0.000000	390.68	1600.19
3	GUIDE	723393312	9.55	4949	0.027	-0.006	0.120	0.190	181.846894	-7.525205	912.10	-426.73
4	GUIDE	723393616	8.36	4950	-0.086	0.072	0.072	0.113	182.159011	-8.118355	-781.58	-2137.70
5	GUIDE	723394376	9.80	4947	-0.049	-0.197	0.134	0.214	181.467227	-8.140366	-1610.42	185.06
6	GUIDE	723397104	7.75	4951	-0.006	-0.072	0.091	0.141	181.946290	-8.486028	-2274.16	-1818.64
7	GUIDE	723396024	10.09	4942	0.098	0.207	0.196	0.307	181.993370	-8.522185	-2346.56	-2019.16

## 2.4 Star Slots

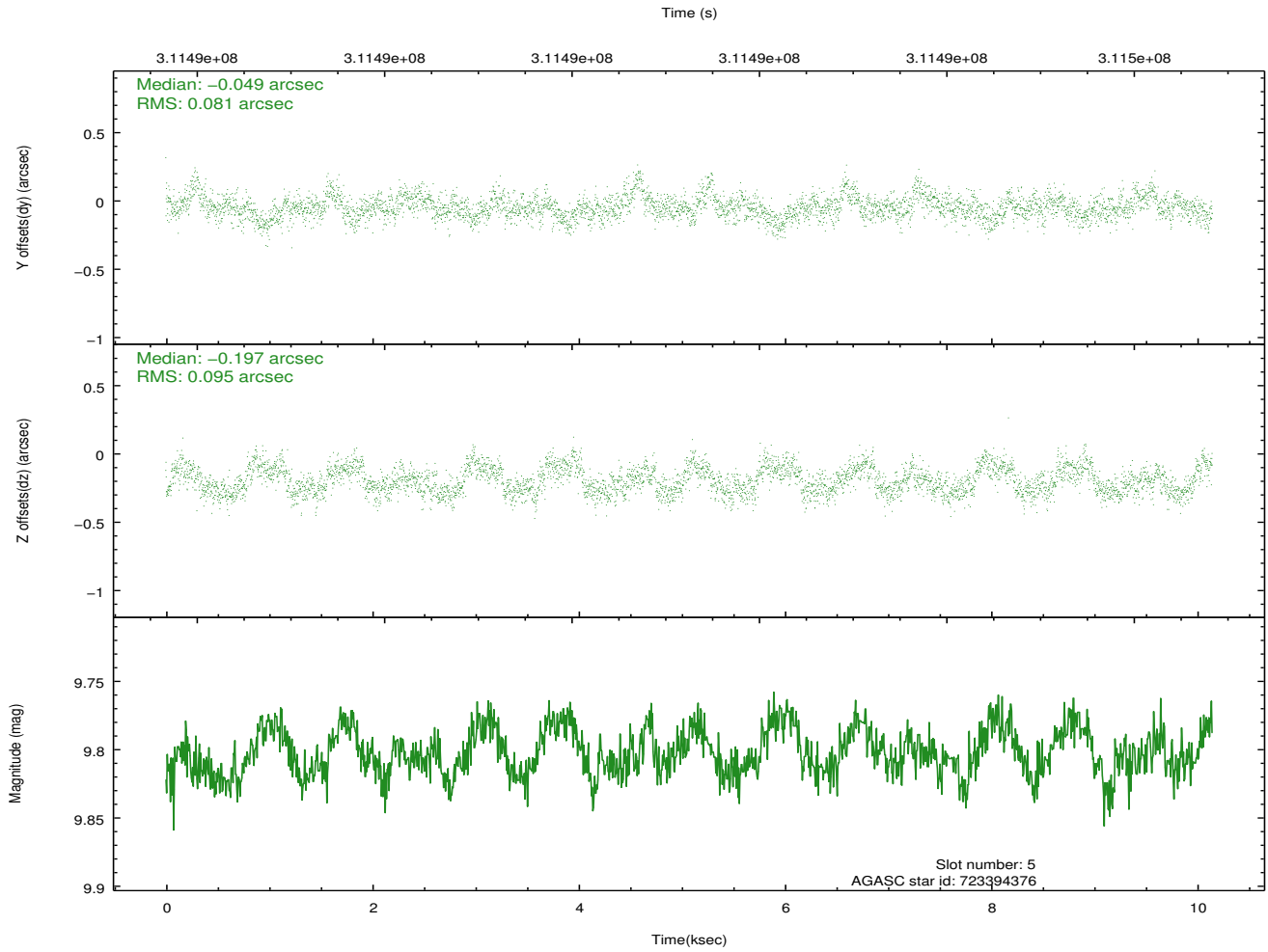
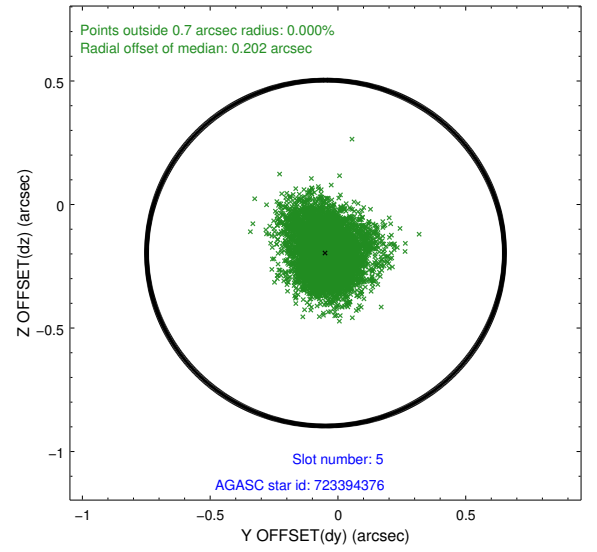
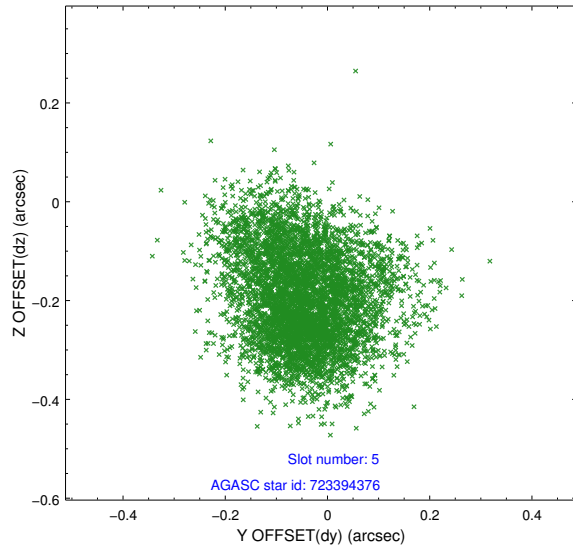
### 2.4.1 Slot 3



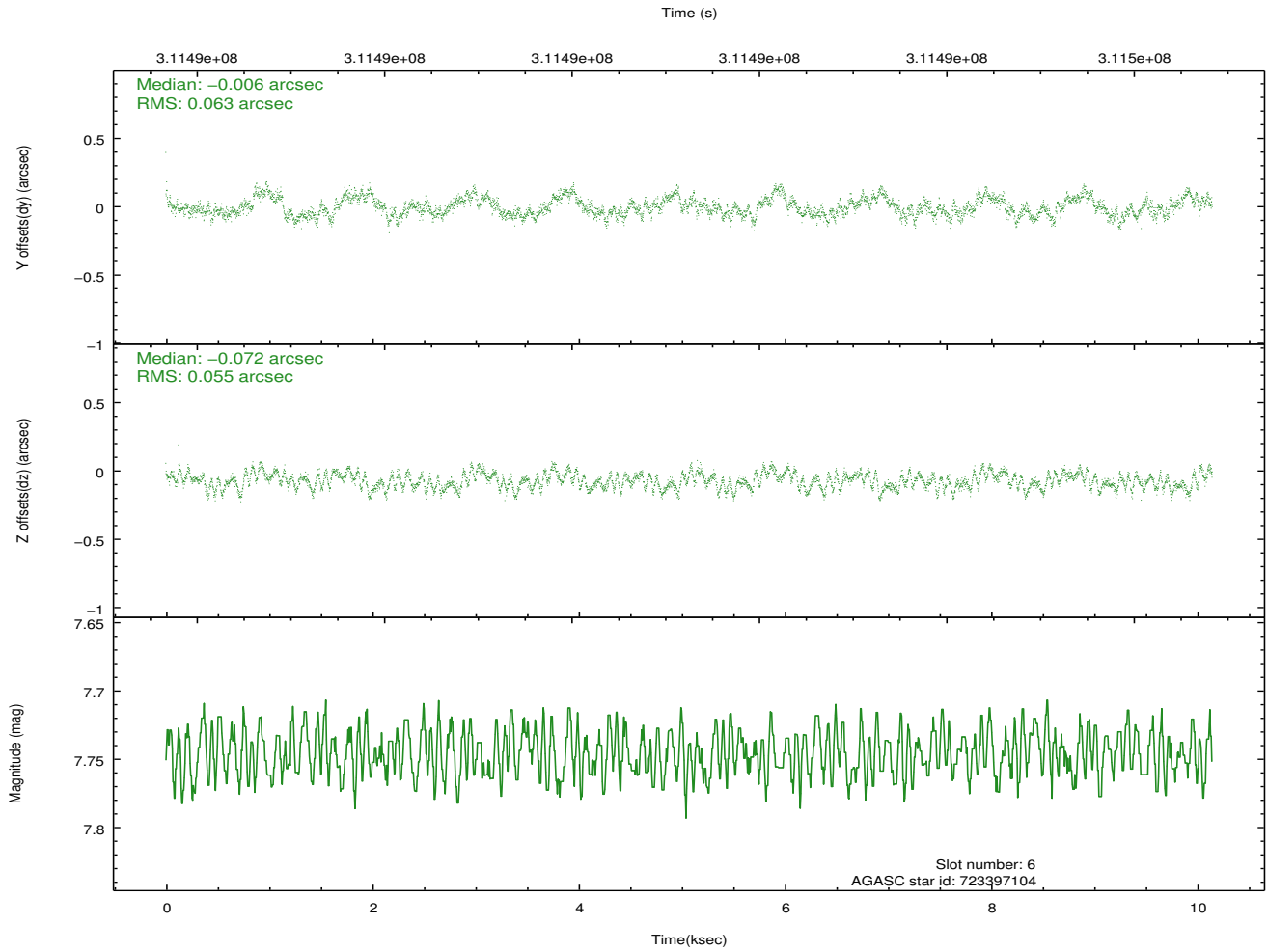
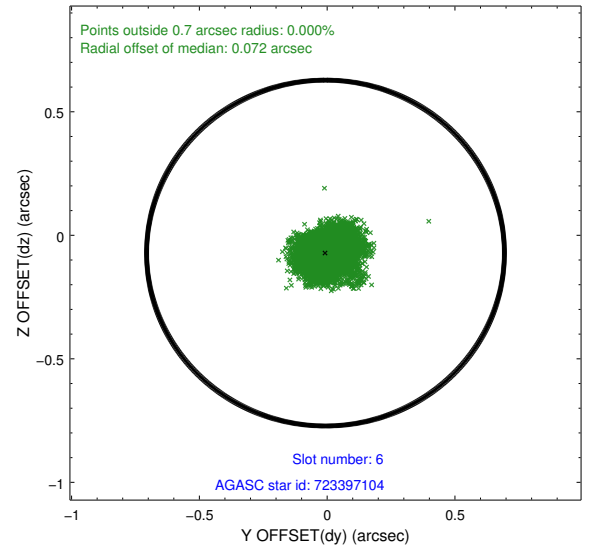
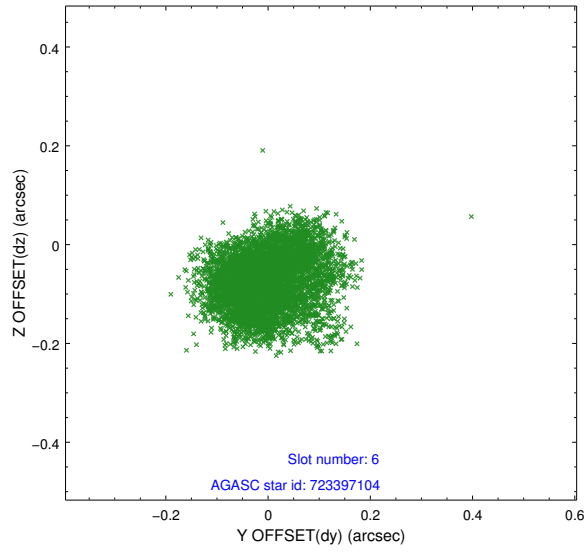
## 2.4.2 Slot 4



### 2.4.3 Slot 5

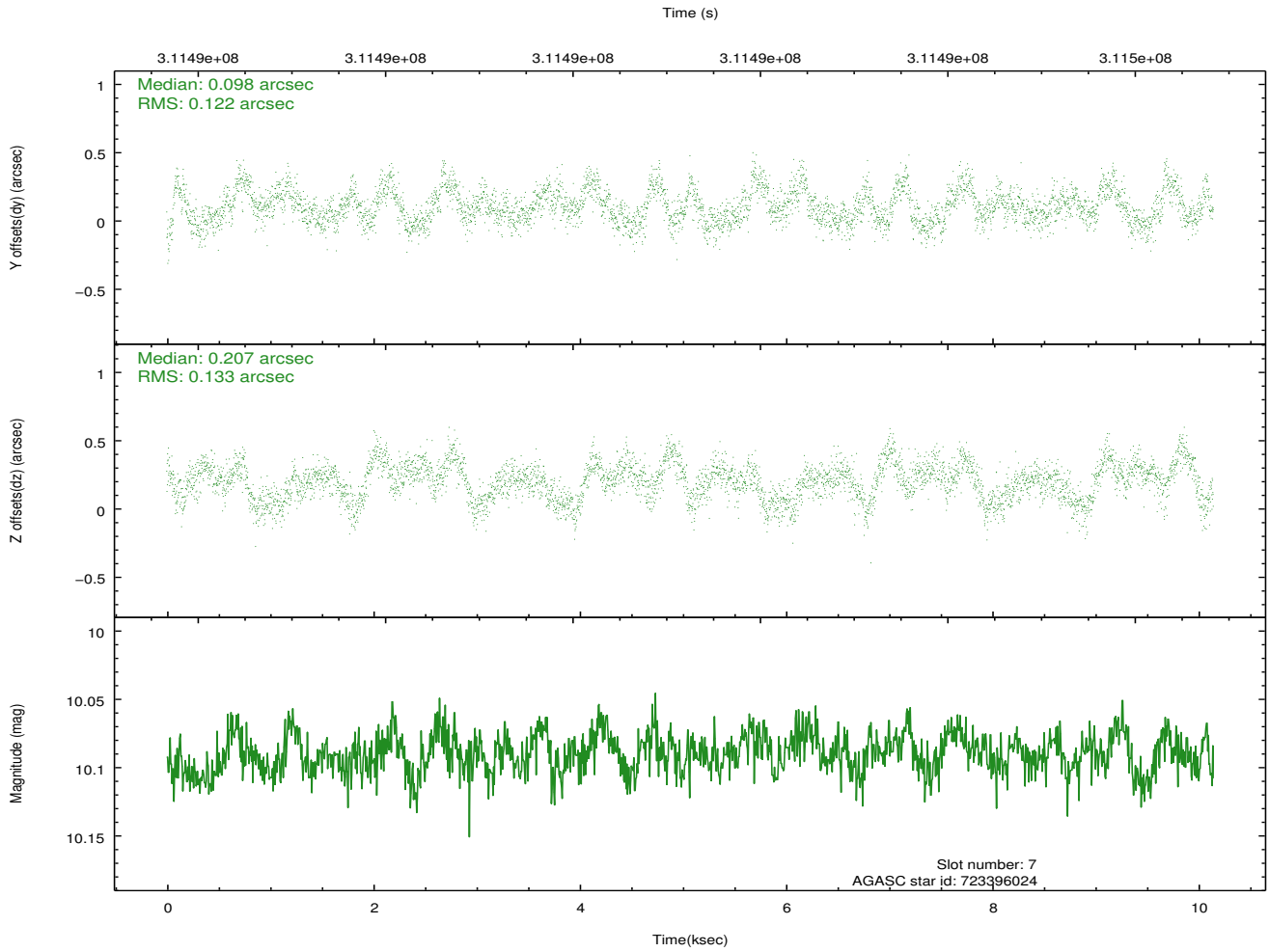
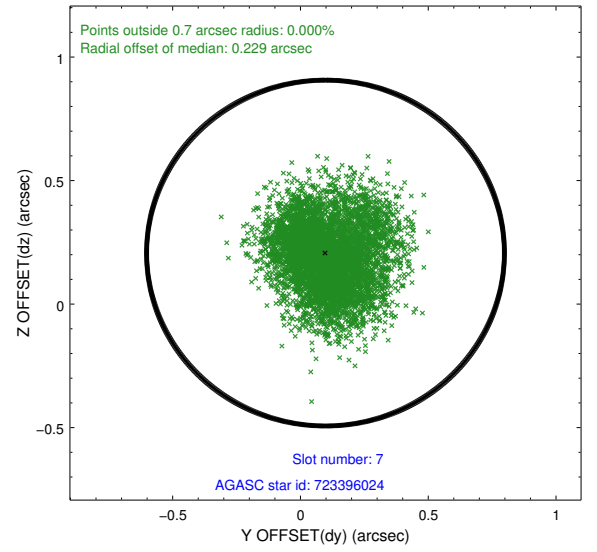
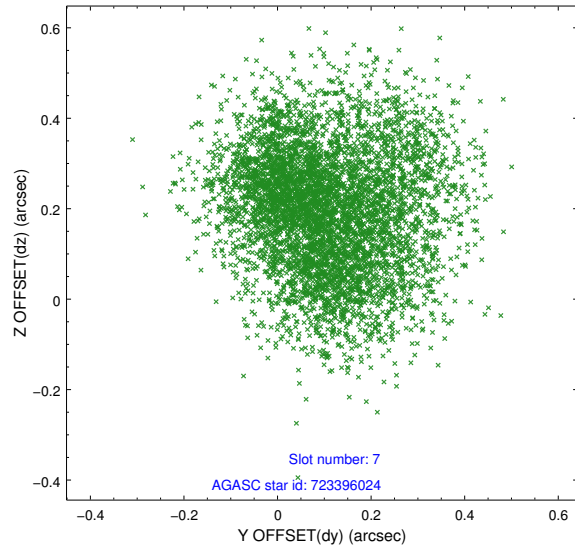


## 2.4.4 Slot 6



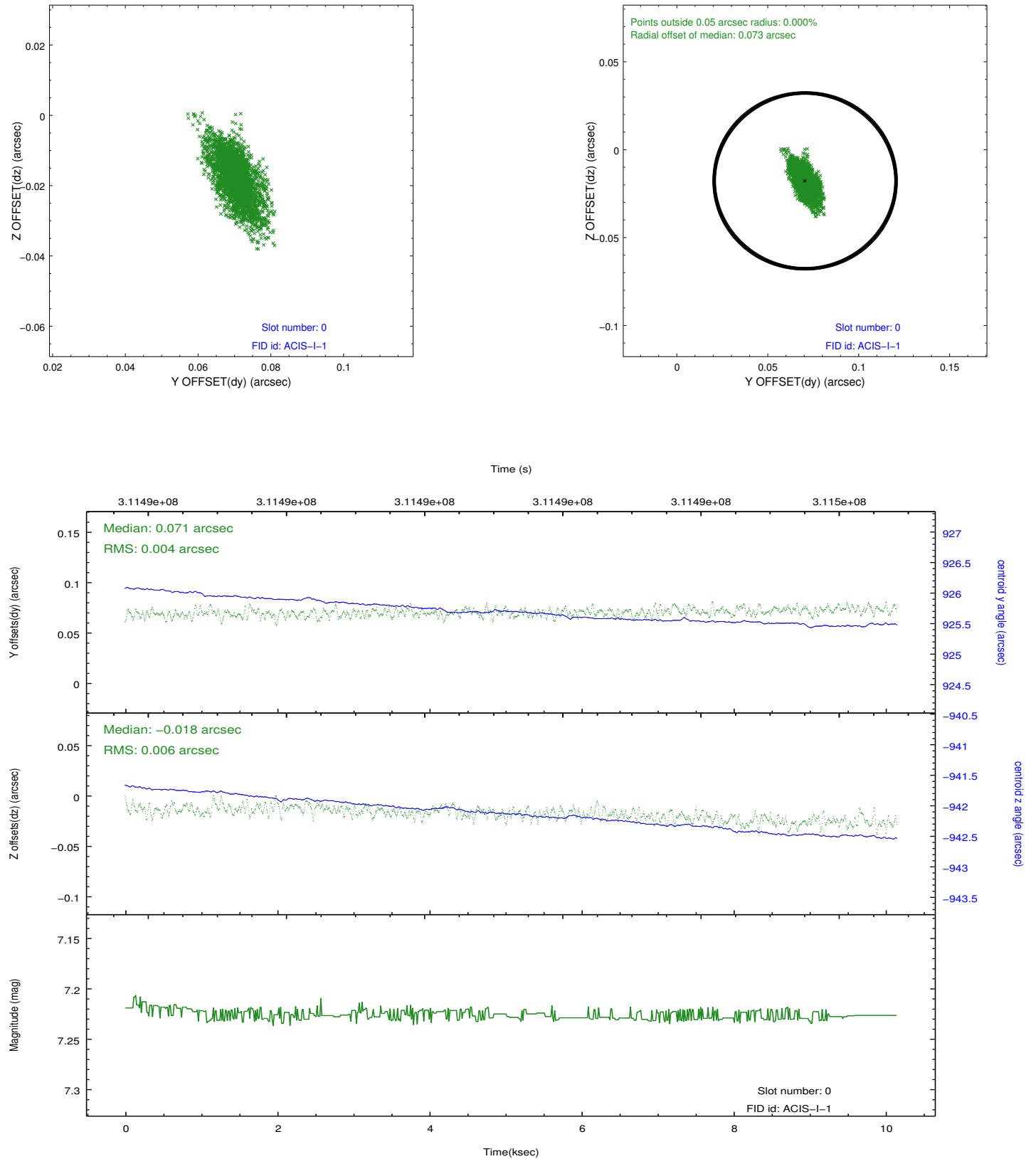


## 2.4.5 Slot 7

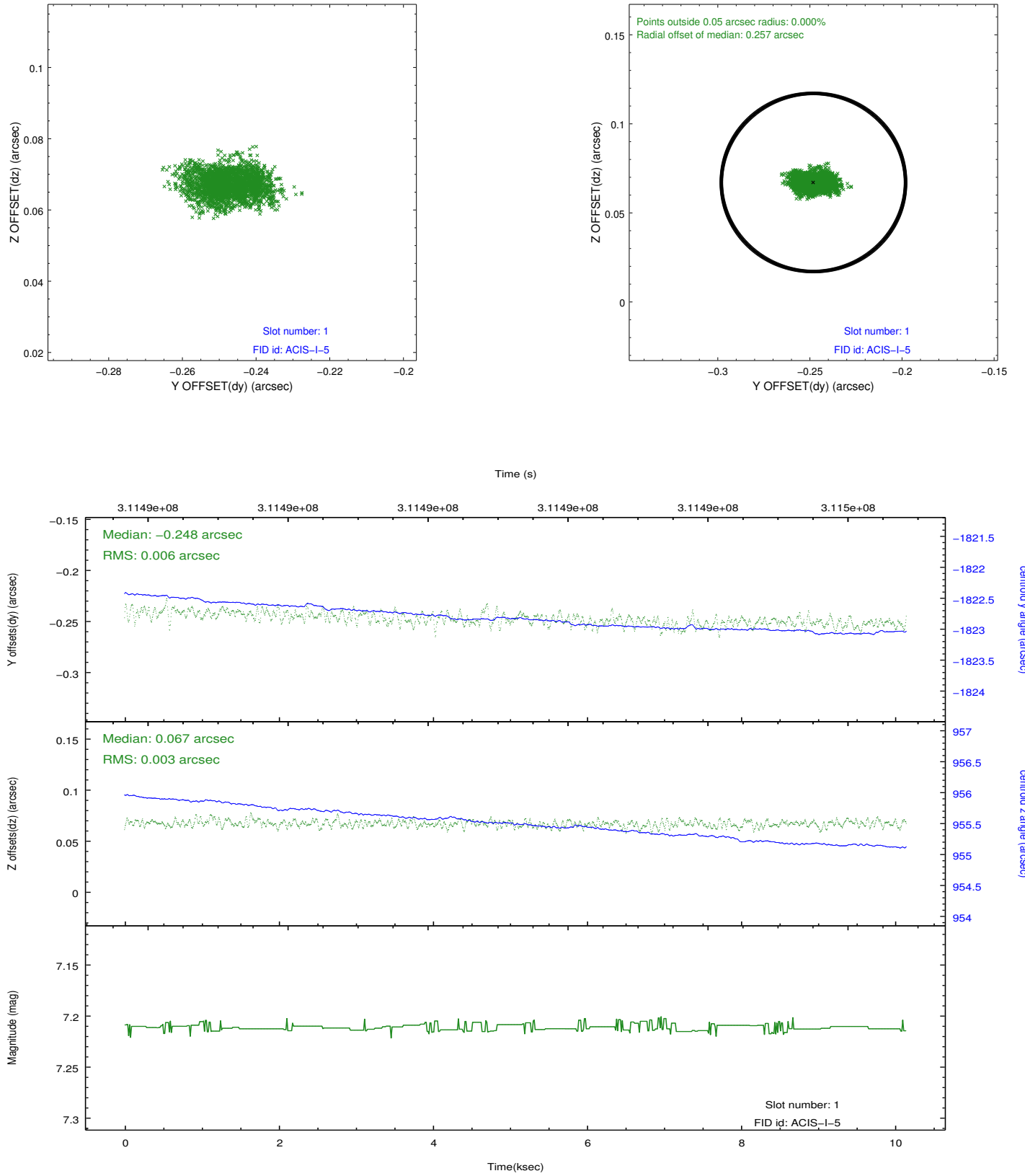


## 2.5 FID Slots

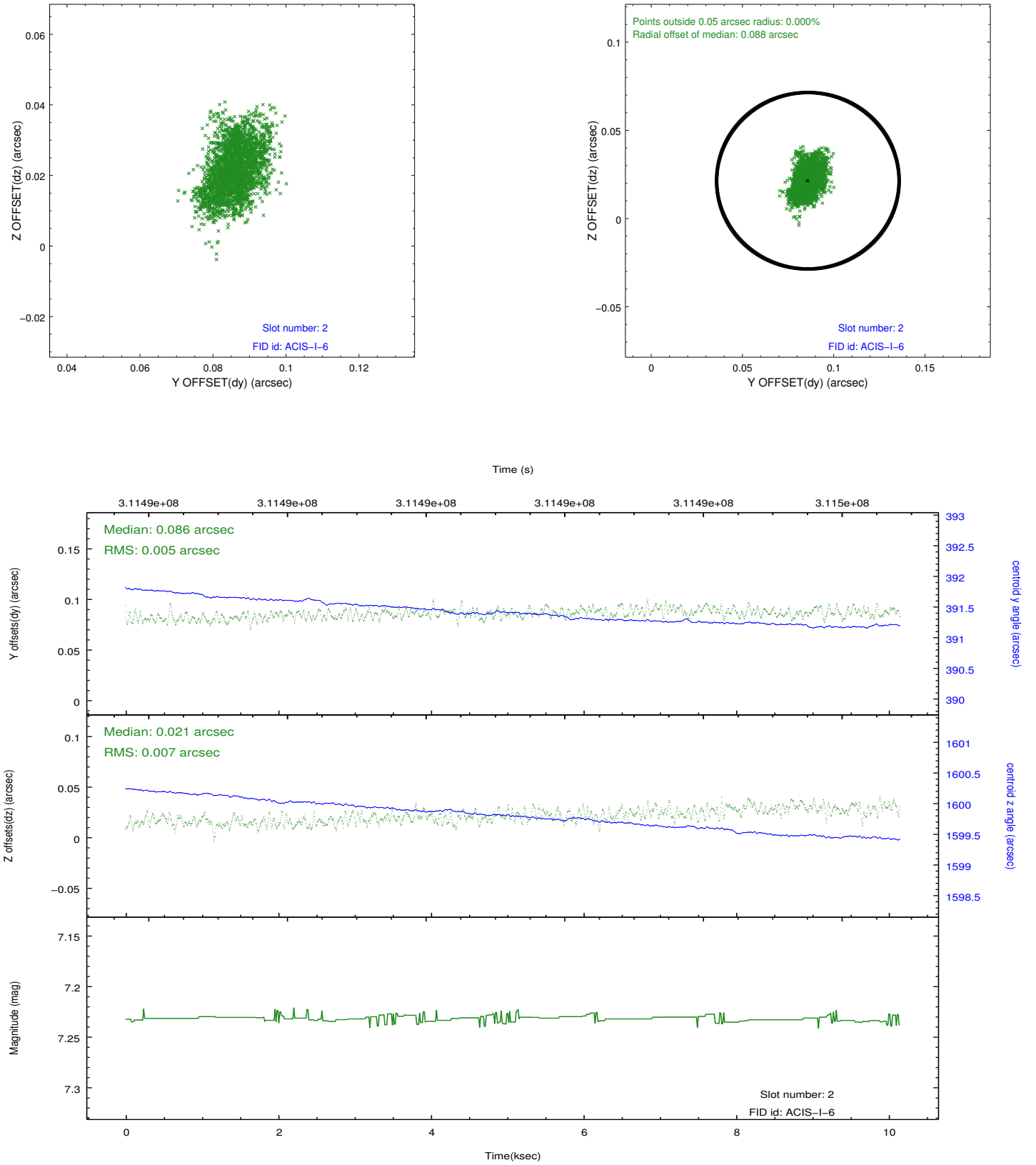
### 2.5.1 Slot 0



## 2.5.2 Slot 1



### 2.5.3 Slot 2



## A Summary

### A.1 Status

V&V Scientist	Beth Sundheim
V&V Date (YYYY-MM-DD)	2012.05.07
V&V Edition	1
V&V Disposition and Status	OK
V&V Charge Time	10.1432

### A.2 Comments