

# V&V Reference Report

## L2 ASCDS Version : 8.4.4

Observation 9258 - L2 Version 2  
Chandra X-Ray Center

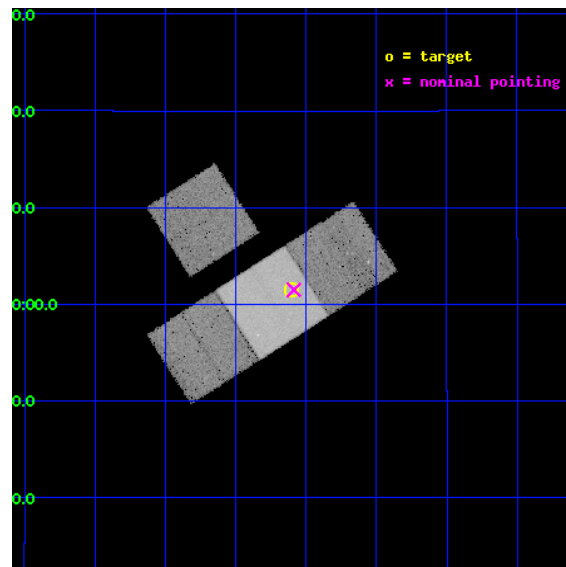
L2 Processing Date : May 16 2012

## Contents

<b>1</b>	<b>Front</b>	<b>2</b>
<b>2</b>	<b>OBI</b>	<b>3</b>
2.1	OBI . . . . .	3
2.1.1	Images . . . . .	3
2.1.2	Bias . . . . .	3
2.1.3	Parameters . . . . .	4
2.1.4	Events . . . . .	4
2.2	Compared Parameters . . . . .	5
2.3	Aspect . . . . .	6
2.4	Star Slots . . . . .	9
2.4.1	Slot 3 . . . . .	9
2.4.2	Slot 4 . . . . .	10
2.4.3	Slot 5 . . . . .	11
2.4.4	Slot 6 . . . . .	12
2.4.5	Slot 7 . . . . .	13
2.5	FID Slots . . . . .	14
2.5.1	Slot 0 . . . . .	14
2.5.2	Slot 1 . . . . .	15
2.5.3	Slot 2 . . . . .	16
<b>A</b>	<b>Summary</b>	<b>17</b>
A.1	Status . . . . .	17
A.2	Comments . . . . .	17

# 1 Front

seq_num	701699	Sequence number
obs_id	9258	Observation id
title	Orientation effects in the X-ray and multi-wavelength properties of high-z, 3CRR quasars.	Proposal title
observer	Dr. Belinda Wilkes	Principal investigator
object	3CRR 368	Source name
dtcycle	0	&#160
cycle	P	events from which exps? Prim/Second/Both
ra_targ	271.276667	Observer's specified target RA [deg]
dec_targ	11.025056	Observer's specified target Dec [deg]
ra_nom	271.27171372577	Nominal RA [deg]
dec_nom	11.025102288299	Nominal Dec [deg]
roll_nom	147.45607067841	Nominal Roll [deg]
revision	2	Processing version of data
ontime	20168.600155115	Sum of GTIs [s]
livetime	19905.082546181	Livetime [s]
ontime3	20168.600155115	Sum of GTIs [s]
ontime6	20168.600155115	Sum of GTIs [s]
ontime7	20168.600155115	Sum of GTIs [s]
ontime8	20168.600155115	Sum of GTIs [s]
l2events	172658	Number of level 2 events

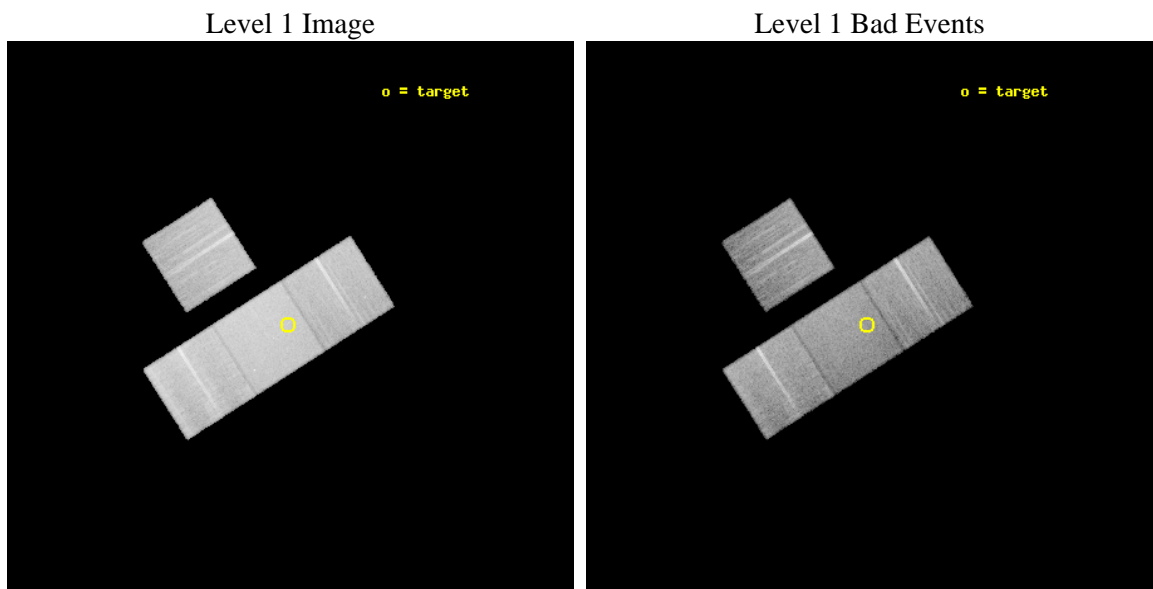




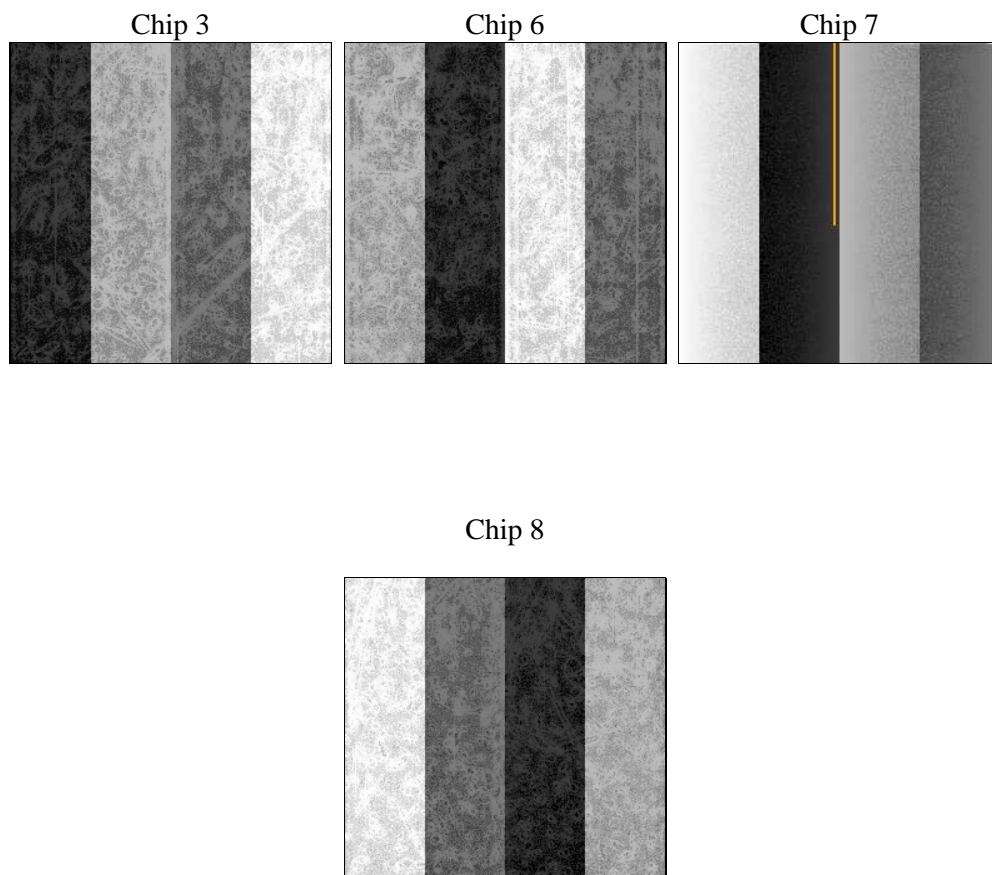
## 2 OBI

### 2.1 OBI

#### 2.1.1 Images



#### 2.1.2 Bias



### 2.1.3 Parameters

obi_num	0	Obi number	sched_exp_time	20000.000000	[s] Scheduled observation exposure time
ascdsver	8.4.4	Processing system revision	ontime	20168.600155115	Sum of GTIs [s]
caldsver	4.4.9	&#160	ontime3	20168.600155115	Sum of GTIs [s]
date	2012-05-16T03:21:13	Date and time of file creation	ontime6	20168.600155115	Sum of GTIs [s]
revision	2	Processing version of data	ontime7	20168.600155115	Sum of GTIs [s]
			ontime8	20168.600155115	Sum of GTIs [s]
			l1events	878244	Number of level 1 events

### 2.1.4 Events

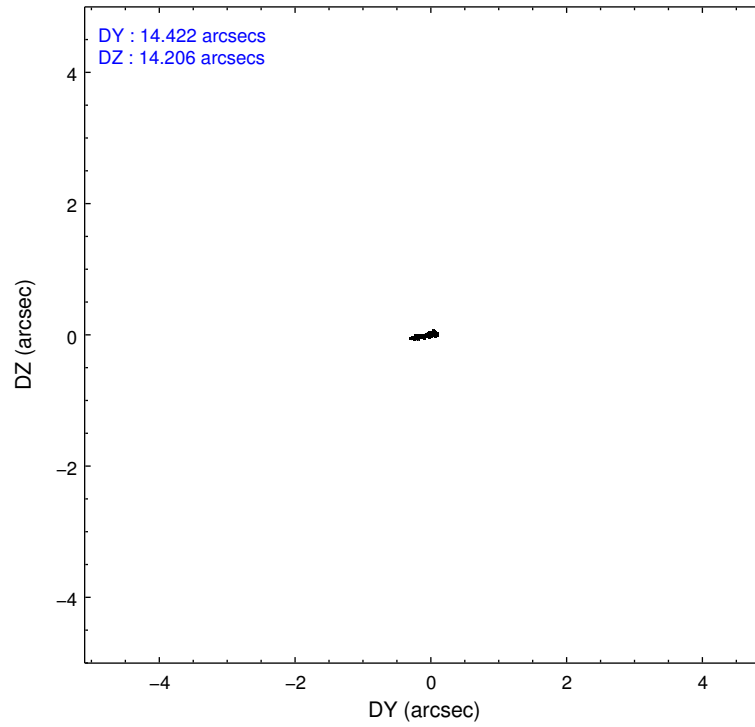
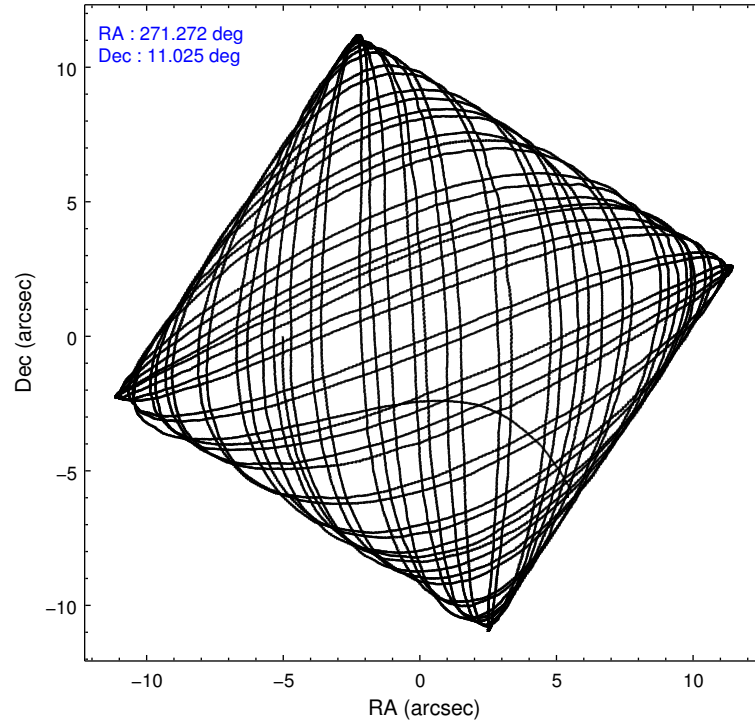
	<b>ccd 3</b>	<b>ccd 6</b>	<b>ccd 7</b>	<b>ccd 8</b>
level 1 events	182666	191145	264329	240104
rejected events	160329	167802	153504	184082
rejected %	87%	87%	58%	76%

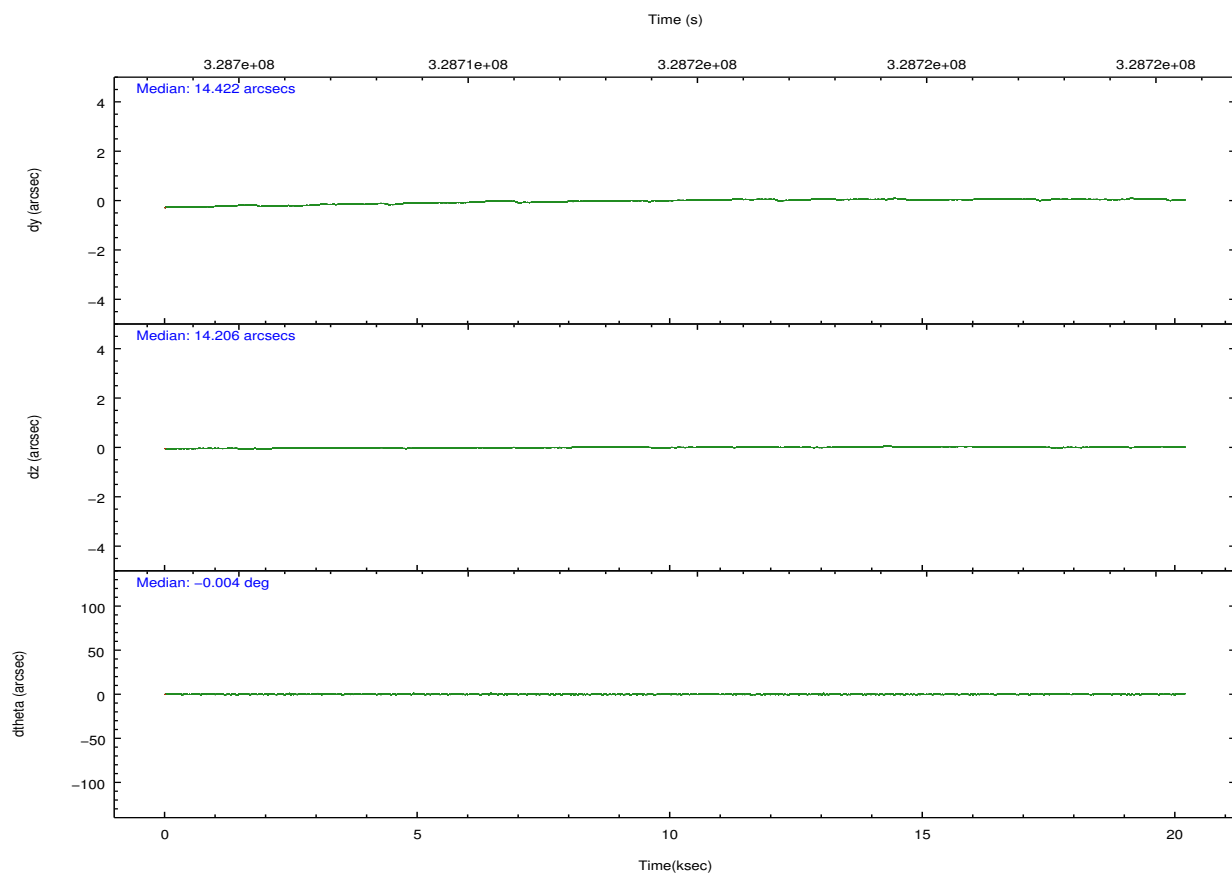
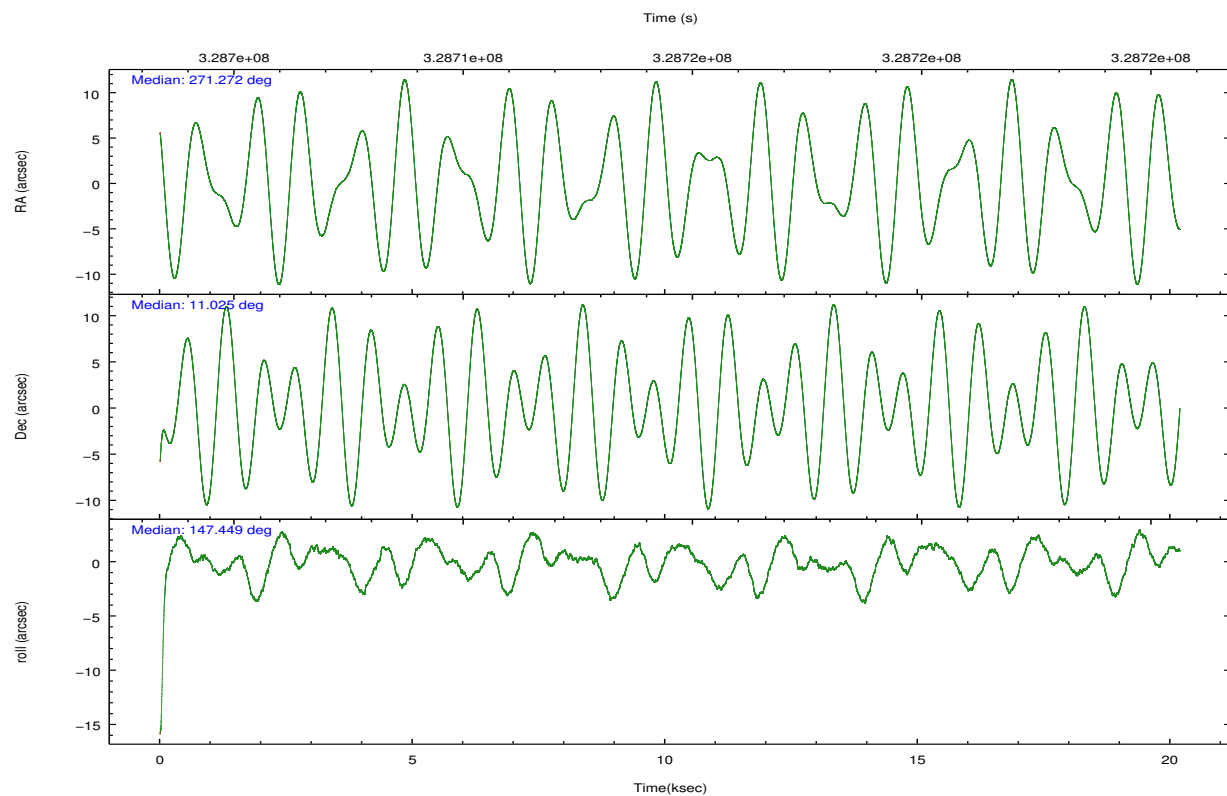
	<b>ccd 3</b>	<b>ccd 6</b>	<b>ccd 7</b>	<b>ccd 8</b>
grade 0 events	9636	9205	9711	17852
	5%	4%	3%	7%
grade 1 events	118	99	259	168
	0%	0%	0%	0%
grade 2 events	4464	5017	22691	12564
	2%	2%	8%	5%
grade 3 events	2117	2172	9479	5801
	1%	1%	3%	2%
grade 4 events	2170	2179	9424	5539
	1%	1%	3%	2%
grade 5 events	8967	8912	24699	11959
	4%	4%	9%	4%
grade 6 events	3954	4771	59550	14271
	2%	2%	22%	5%
grade 7 events	151240	158790	128516	171950
	82%	83%	48%	71%

## 2.2 Compared Parameters

Parameter	Planned	Actual	Parameter	Planned	Actual
Instrument	ACIS	ACIS	Obspar format version number	7	7
Detector	ACIS-3678	ACIS-3678	Obspar file type	PREDICTED	ACTUAL
Grating	NONE	NONE	Obspar update status	NONE	UPDATED
Data mode	FAINT	FAINT	CCD I0 on	N	N
Observation mode	POINTING	POINTING	CCD I1 on	N	N
[deg] Pointing RA	271.299575	271.2717137257697	CCD I2 on	N	N
[deg] Pointing Dec	11.024285	11.02510228829886	CCD I3 on	O1	Y
[deg] Pointing Roll	147.294122	147.4560706784127	CCD S0 on	N	N
[mm] SIM focus pos	-0.684267	-0.6828225247311905	CCD S1 on	N	N
[mm] SIM defocus	0	0.001444936568705701	CCD S2 on	O3	Y
[mm] SIM translation stage pos	-190.132523	-190.1425803651734	CCD S3 on	Y	Y
[mm] SIM translation stage offset	0	0.01005778216563158	CCD S4 on	O2	Y
[s] Observation start time (MET)	328704616.184000	328703683.29325	CCD S5 on	N	N
Observation start date	2008-06-01T10:49:11	2008-06-01T10:34:43	Number of optional ACIS chips dropped	0	0
[s] Observation end time (MET)	328724616.184000	328725550.64432	On-chip summing requested	N	N
Observation end date	2008-06-01T16:22:31	2008-06-01T16:39:10	Subarray requested	NONE	NONE
Read mode	TIMED	TIMED	Alternating exposures requested	N	N
			[s] Primary exposure time	0.000000	3.1

## 2.3 Aspect



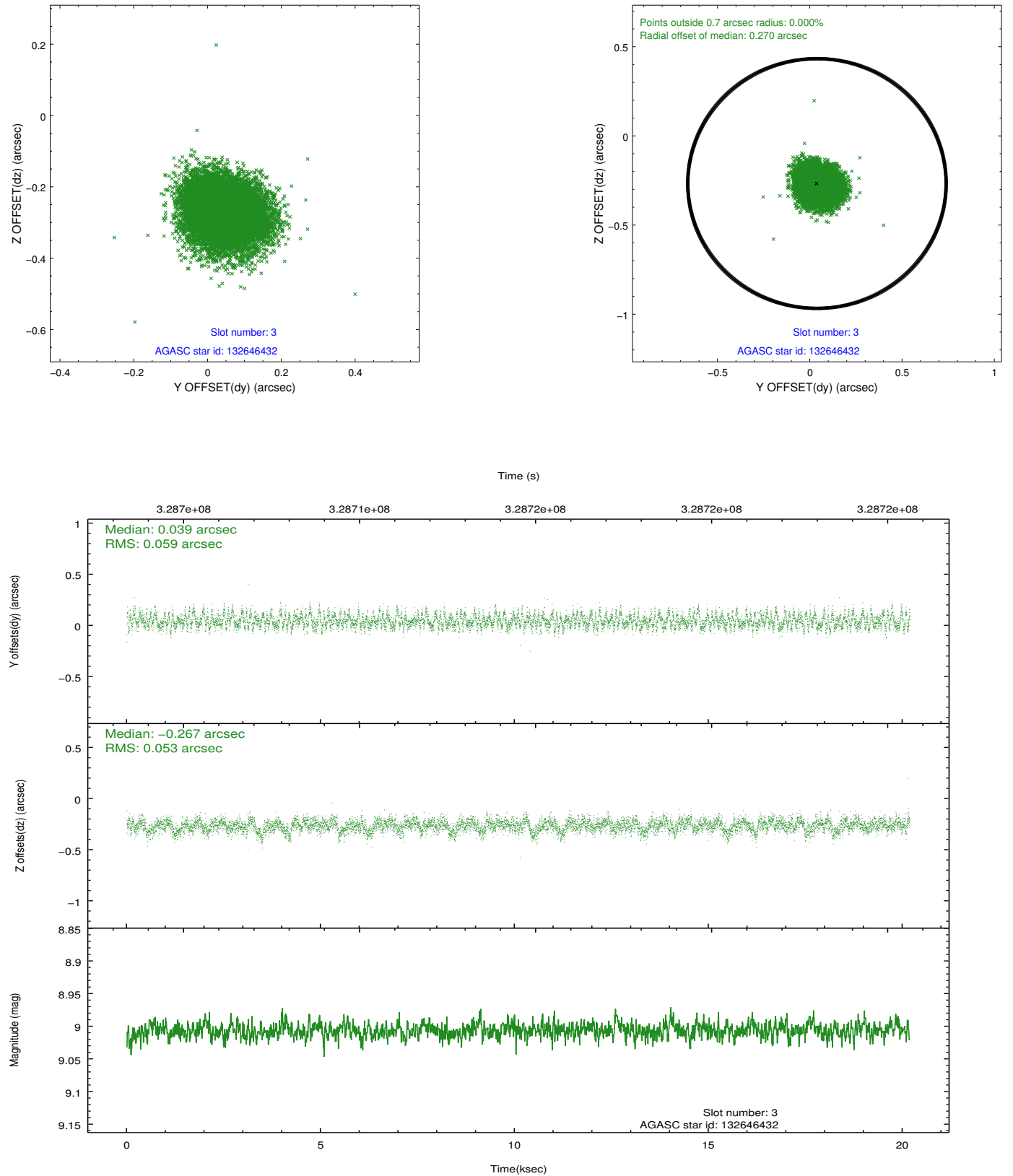


### Slot Statistics

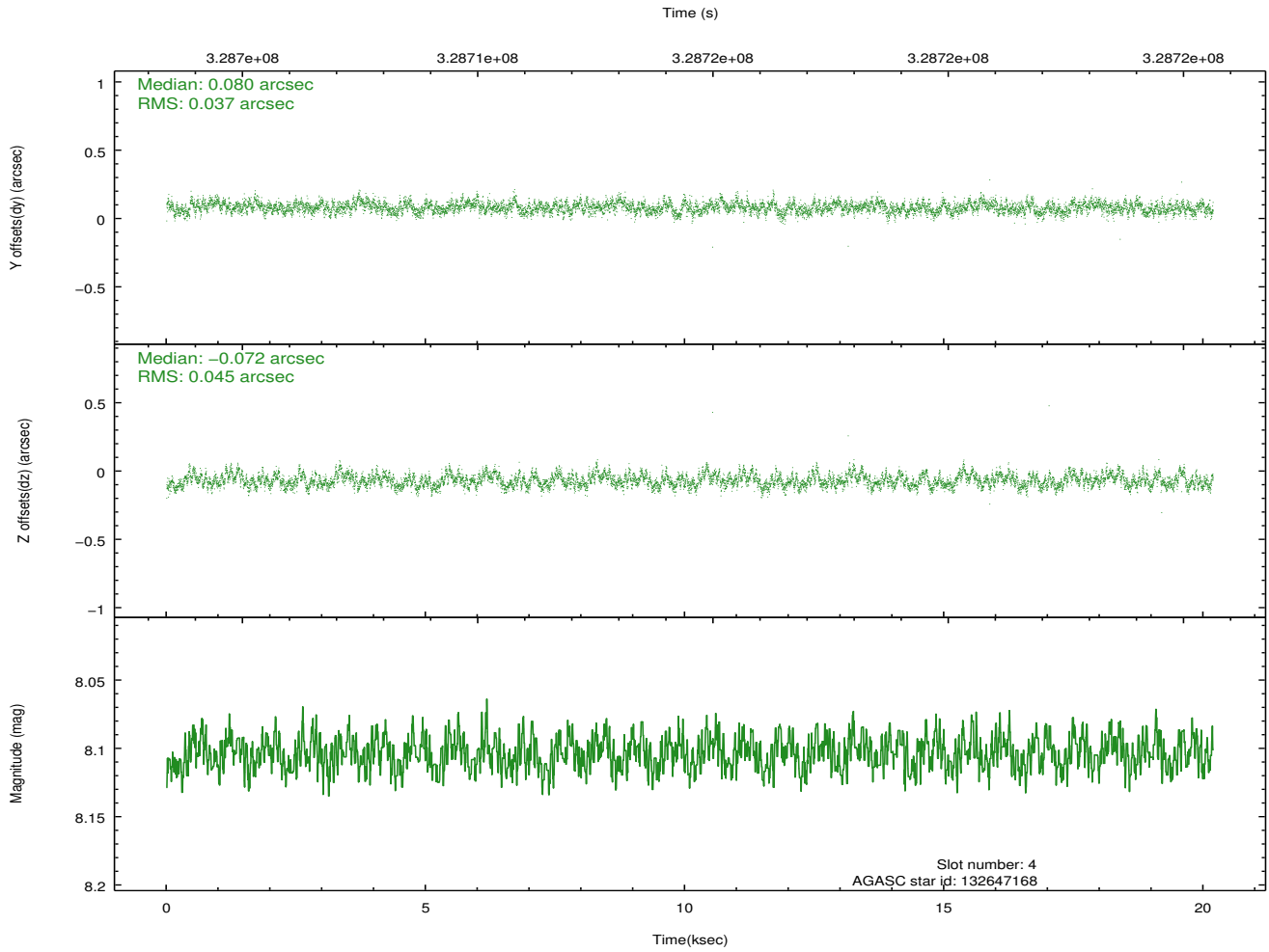
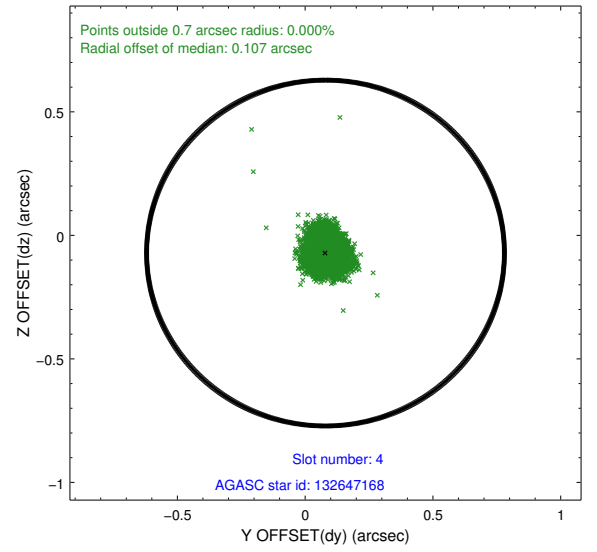
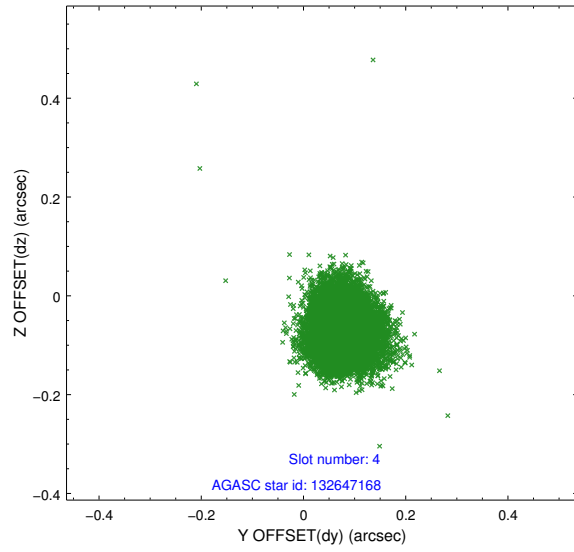
slot	status	id	mag	n_pts	med_dy	med_dz	dr1	dr2	ra	dec	mean_y	mean_z
0	FID	ACIS-S-2	6.90	4924	-0.075	-0.046	0.008	0.014	0.000000	0.000000	-767.41	-1735.56
1	FID	ACIS-S-4	6.98	4925	0.197	0.048	0.008	0.015	0.000000	0.000000	2146.05	172.84
2	FID	ACIS-S-5	7.01	4924	-0.154	0.007	0.006	0.011	0.000000	0.000000	-1820.10	166.67
3	GUIDE	132646432	9.01	9842	0.039	-0.267	0.085	0.135	271.345223	10.224934	-1691.15	2333.73
4	GUIDE	132647168	8.10	9847	0.080	-0.072	0.061	0.097	271.377542	10.447206	-1354.96	1599.09
5	GUIDE	133174008	7.78	9847	-0.303	0.077	0.049	0.079	270.916232	11.625336	2306.74	-1090.46
6	GUIDE	133175720	8.51	9838	-0.044	0.053	0.061	0.097	271.164793	11.431054	1191.91	-975.13
7	GUIDE	132786520	9.11	9842	0.225	0.210	0.083	0.134	272.055318	10.986693	-2318.09	-1331.91

## 2.4 Star Slots

### 2.4.1 Slot 3

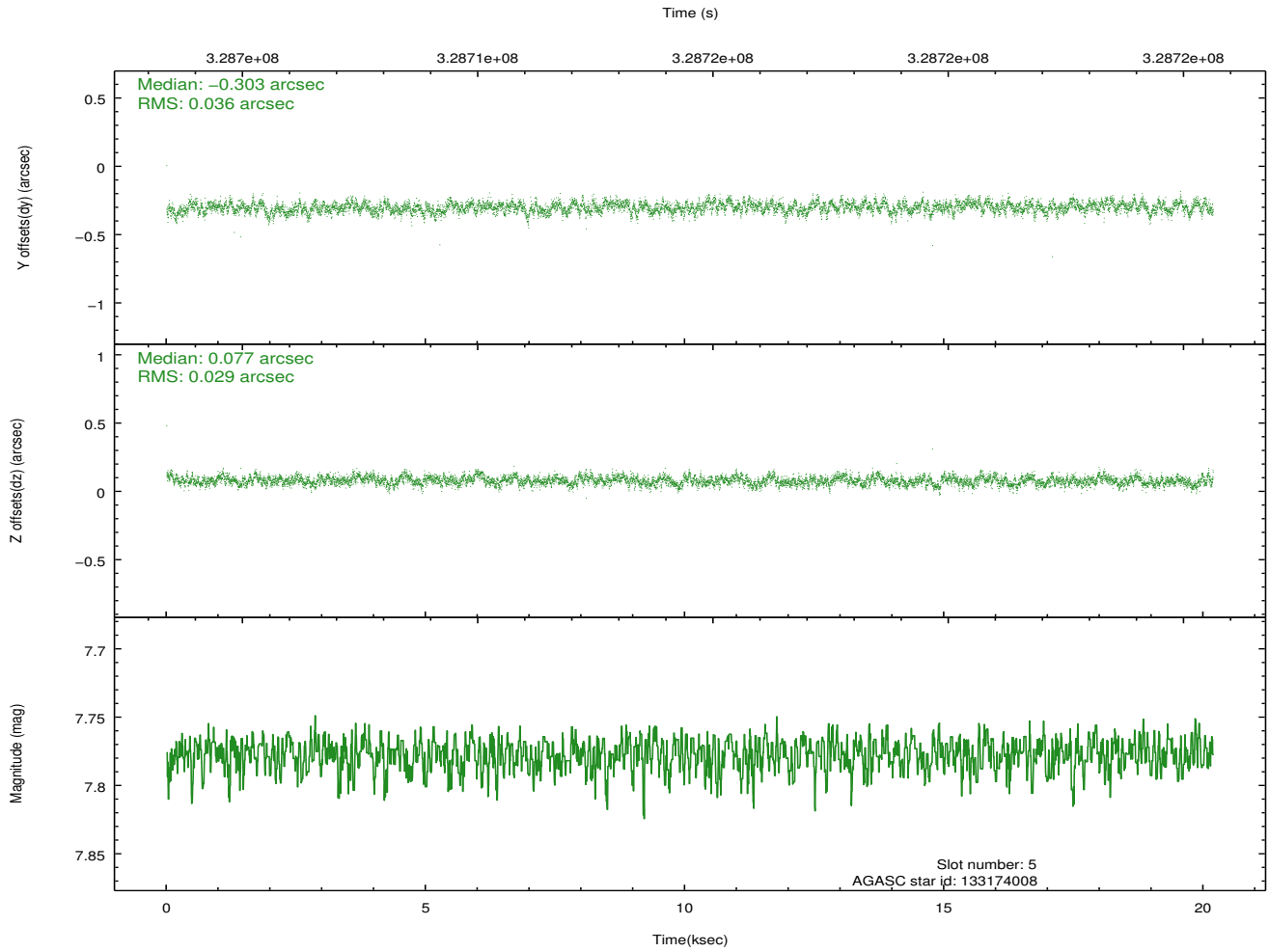
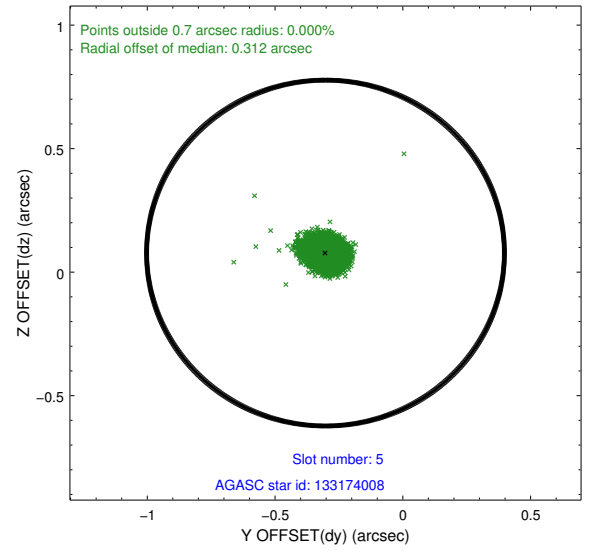
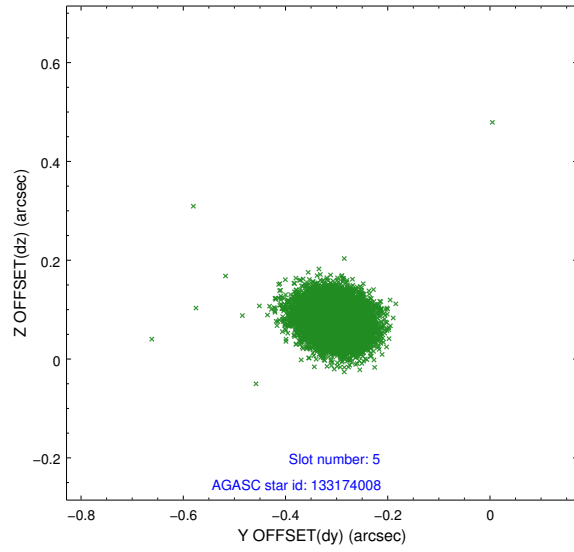


## 2.4.2 Slot 4

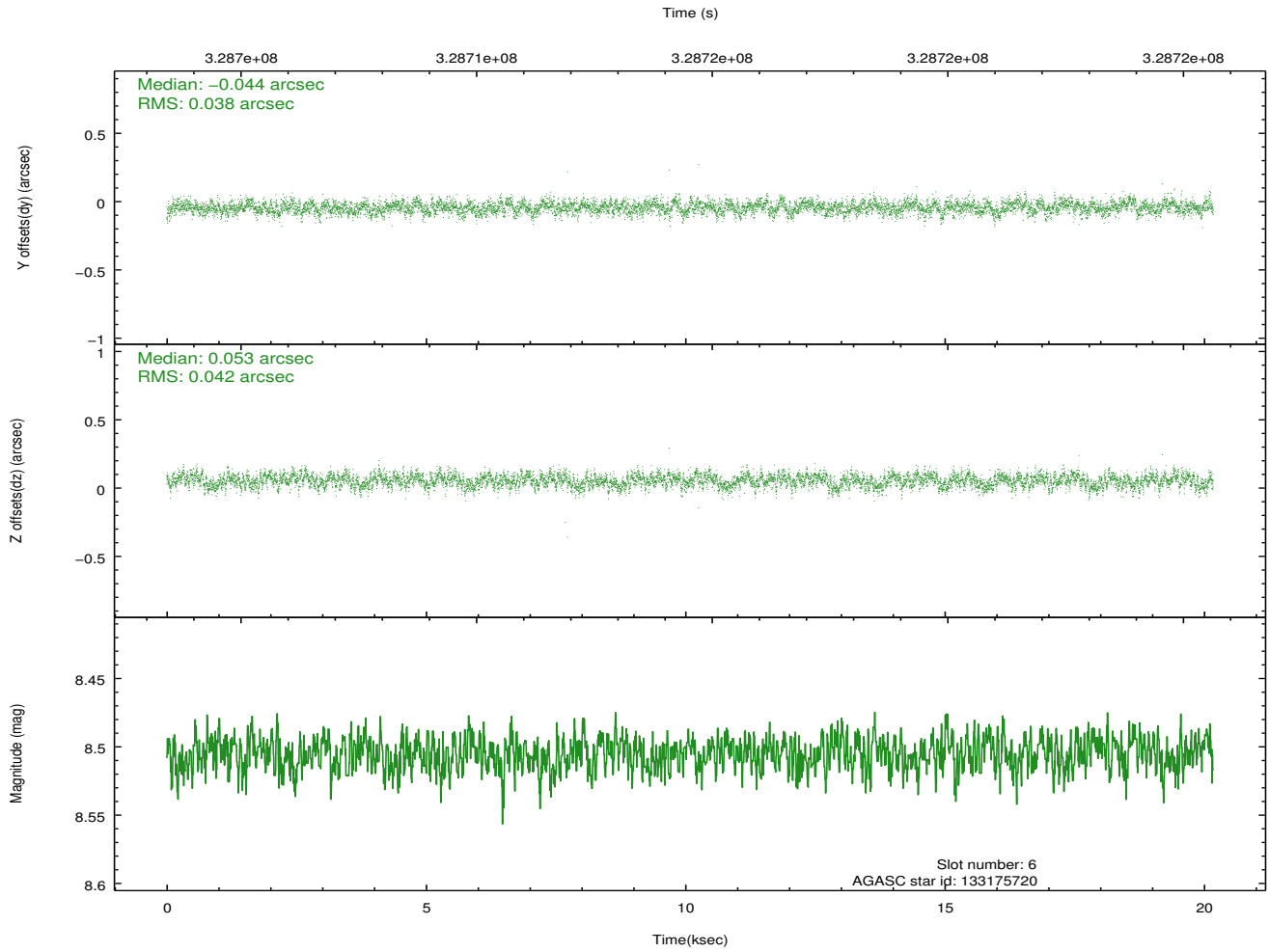
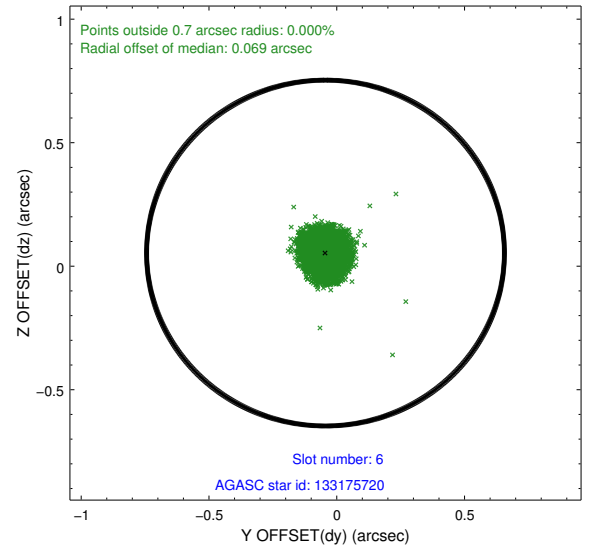
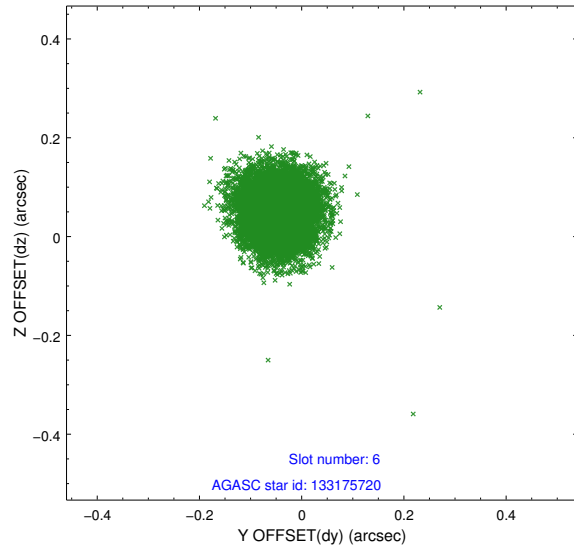




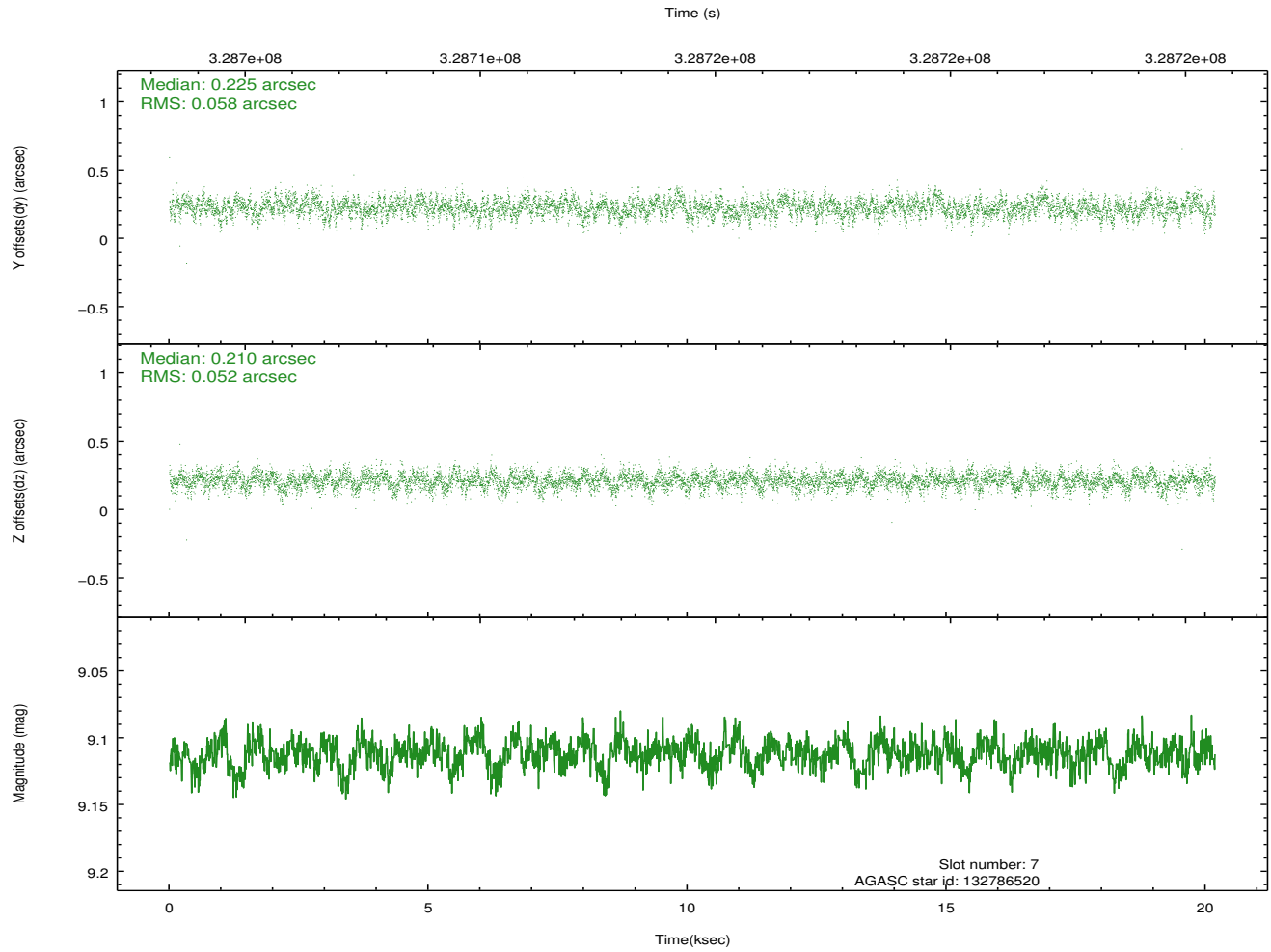
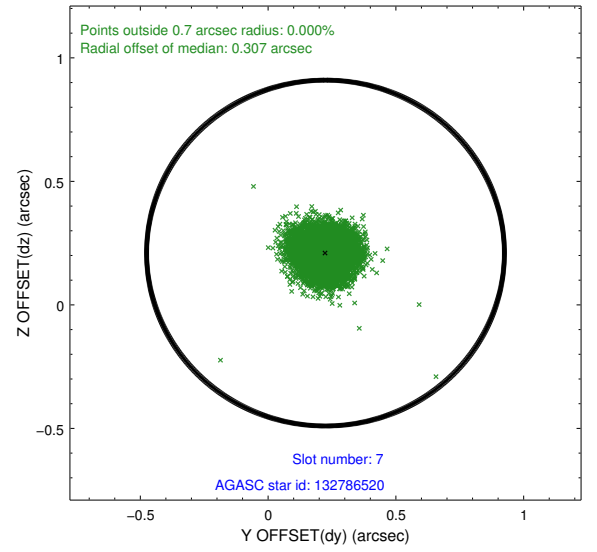
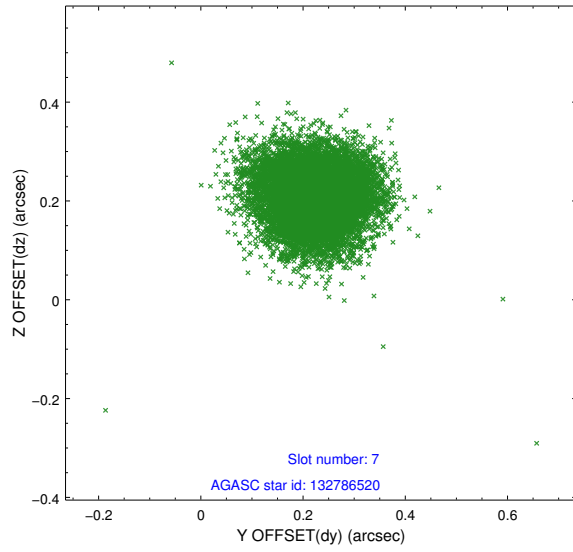
### 2.4.3 Slot 5



## 2.4.4 Slot 6

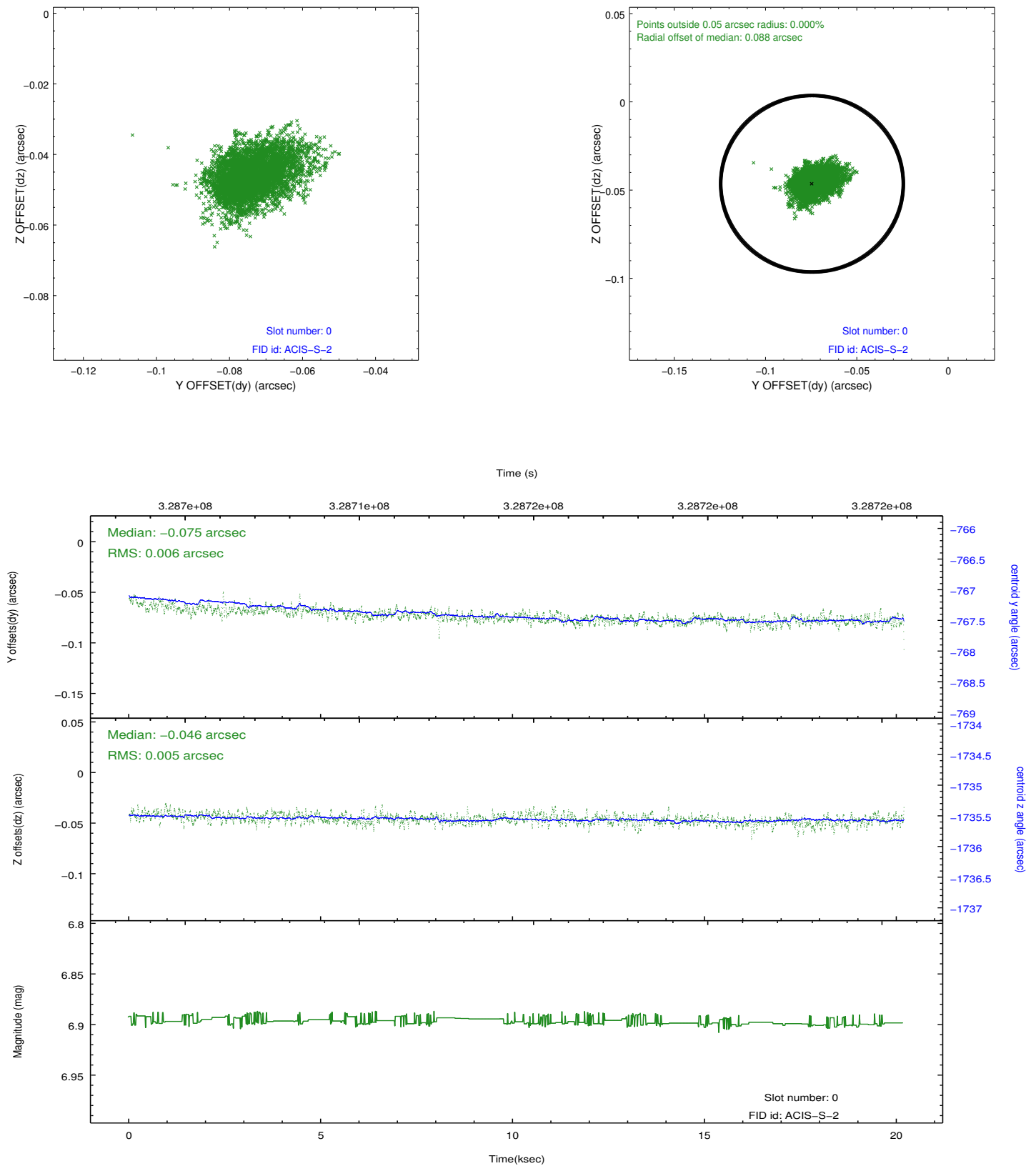


## 2.4.5 Slot 7

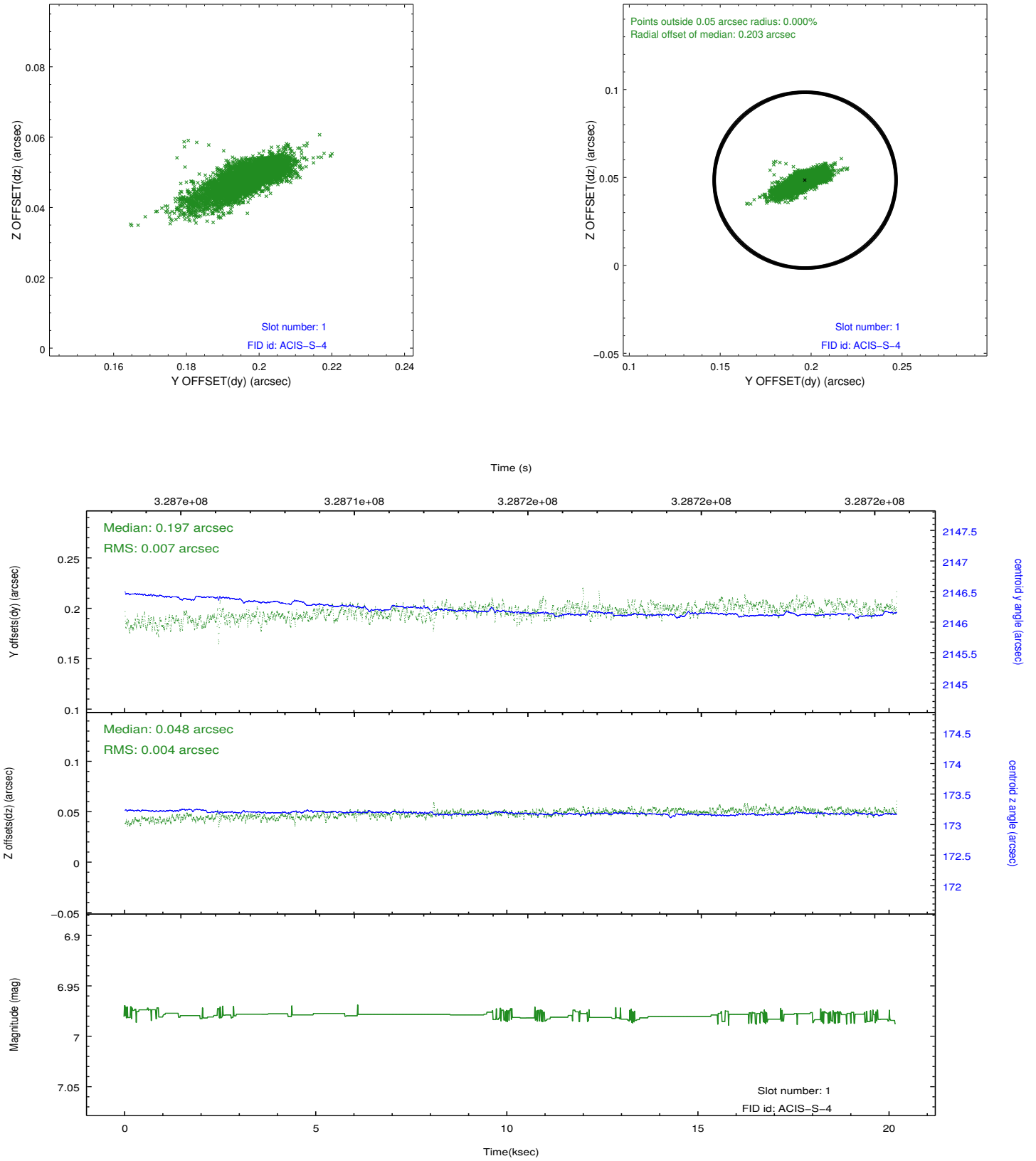


## 2.5 FID Slots

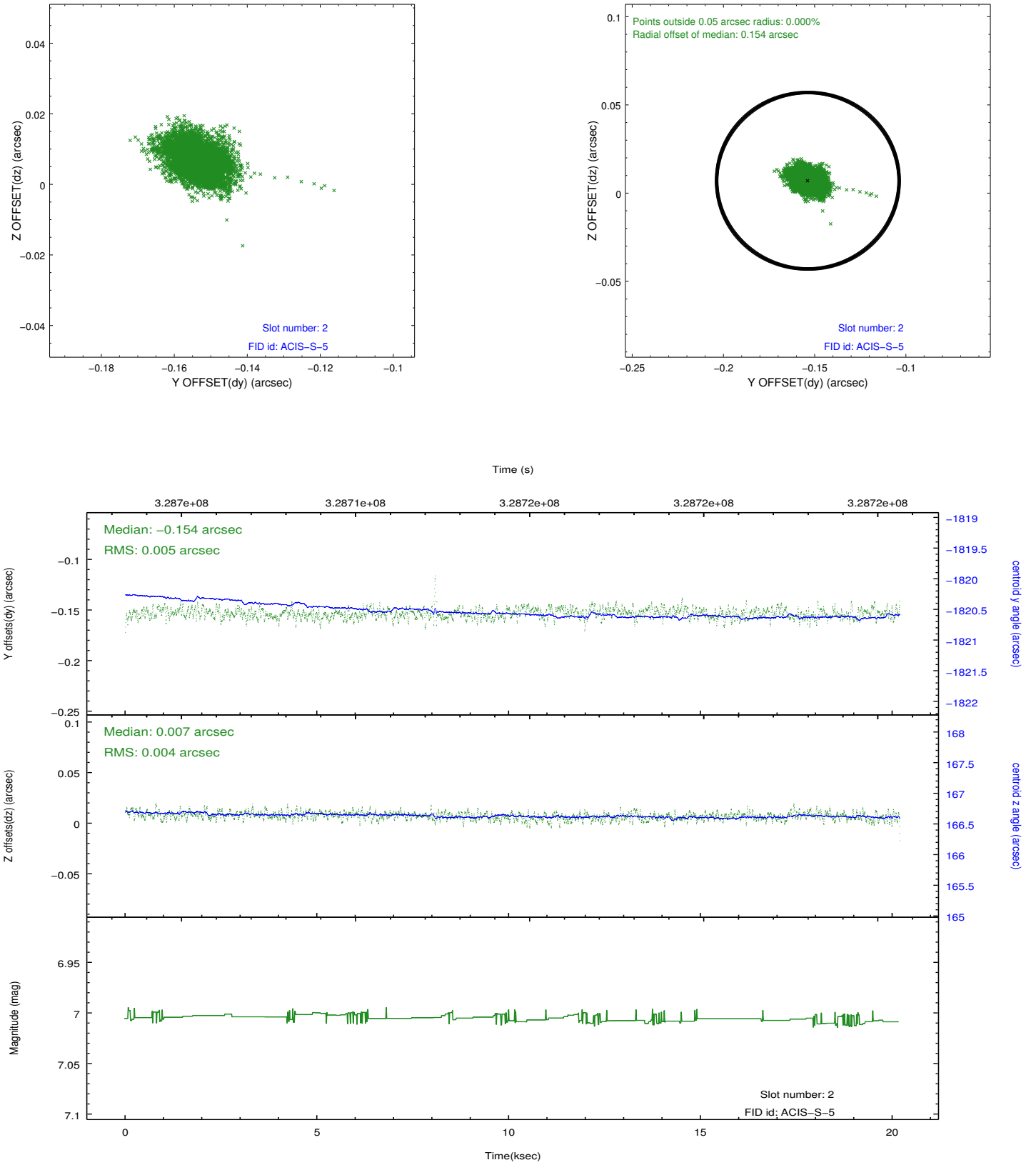
### 2.5.1 Slot 0



## 2.5.2 Slot 1



### 2.5.3 Slot 2



## A Summary

### A.1 Status

V&V Scientist	Jen Lauer
V&V Date (YYYY-MM-DD)	2012.05.22
V&V Edition	1
V&V Disposition and Status	OK
V&V Charge Time	20.1686001

### A.2 Comments