

V&V Reference Report

L2 ASCDS Version : 7.6.10

Observation 888 - L2 Version 001
Chandra X-Ray Center

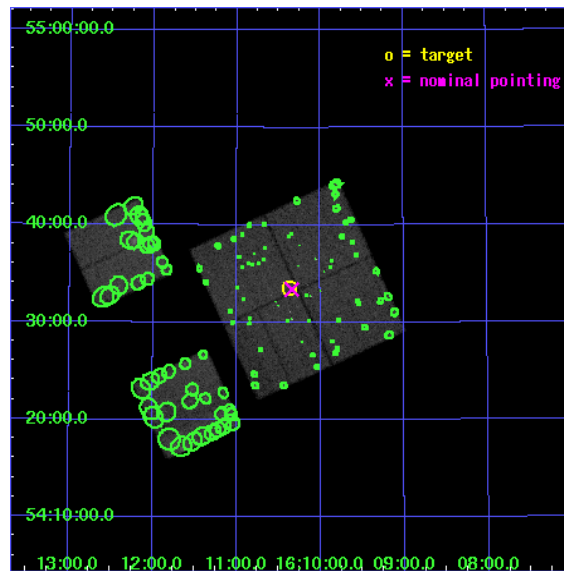
L2 Processing Date : Jun 2 2007

Contents

1	Front	2
2	OBI	3
2.1	OBI	3
2.1.1	Images	3
2.1.2	Bias	3
2.1.3	Parameters	4
2.1.4	Events	4
2.2	Compared Parameters	5
2.3	Aspect	6
2.4	Star Slots	9
2.4.1	Slot 3	9
2.4.2	Slot 4	10
2.4.3	Slot 5	11
2.4.4	Slot 6	12
2.4.5	Slot 7	13
2.5	FID Slots	14
2.5.1	Slot 0	14
2.5.2	Slot 1	15
2.5.3	Slot 2	16
3	Point Sources	17
A	Summary	18
A.1	Status	18
A.2	Comments	18

1 Front

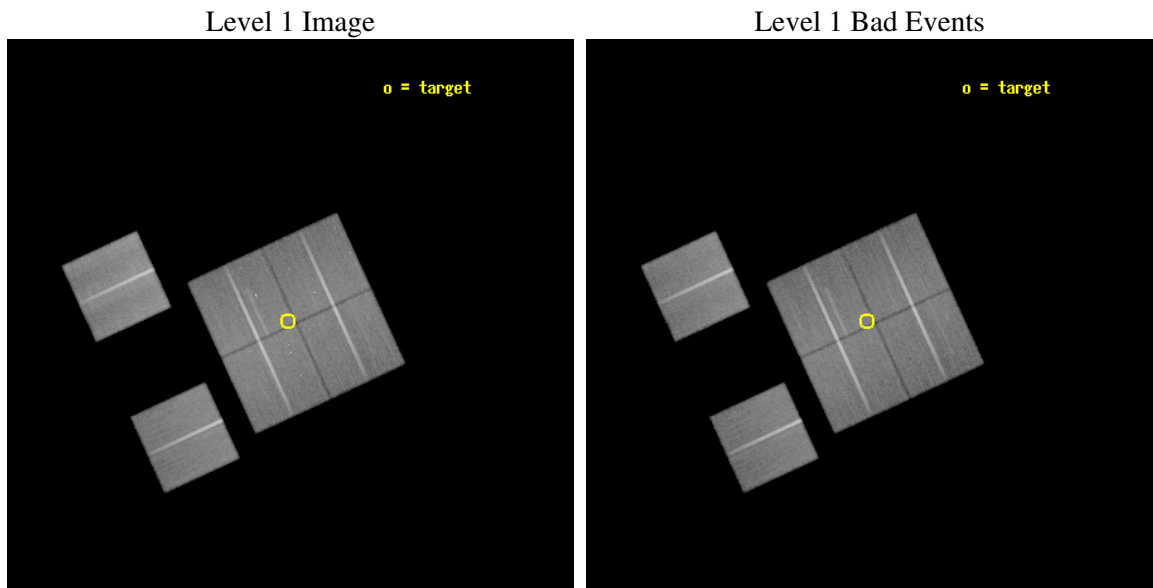
seq_num	700193
obs_id	888
title	THE HIDDEN UNIVERSE - AXAF OBSERVATIONS OF A DEEP INFRARED SURVEY
observer	Dr Omar Almaini
object	Elais:N1
dtcycle	0
cycle	P
ra_targ	242.59125
dec_targ	54.56
ra_nom	242.58498282577
dec_nom	54.5567030095
roll_nom	245.29495439923
revision	3
ontime	73971.200068891
livetime	73034.532193509
ontime0	73964.718158424
ontime1	73971.200068891
ontime2	73971.200068891
ontime3	73971.200068891
ontime6	73971.200068891
ontime8	73971.200068891
l2events	275905



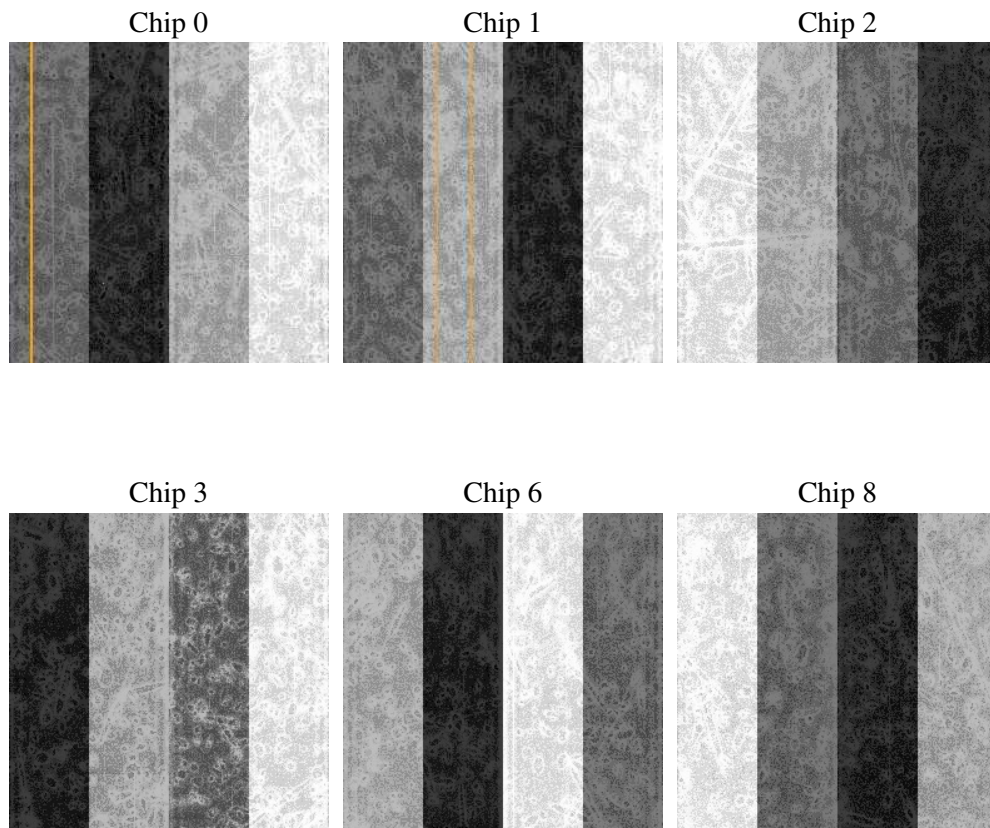
2 OBI

2.1 OBI

2.1.1 Images



2.1.2 Bias



2.1.3 Parameters

obi_num	0
ascdsver	7.6.10
caldsver	3.4.0
date	2007-06-02T05:57:26
revision	3

sched_exp_time	74218.694000
ontime	73971.200068891
ontime0	73964.718158424
ontime1	73971.200068891
ontime2	73971.200068891
ontime3	73971.200068891
ontime6	73971.200068891
ontime8	73971.200068891
l1events	2734848

2.1.4 Events

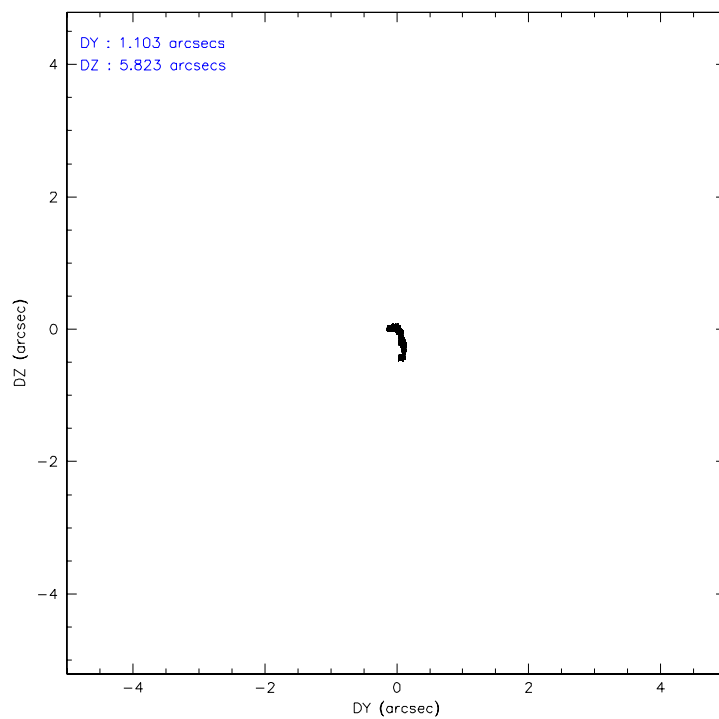
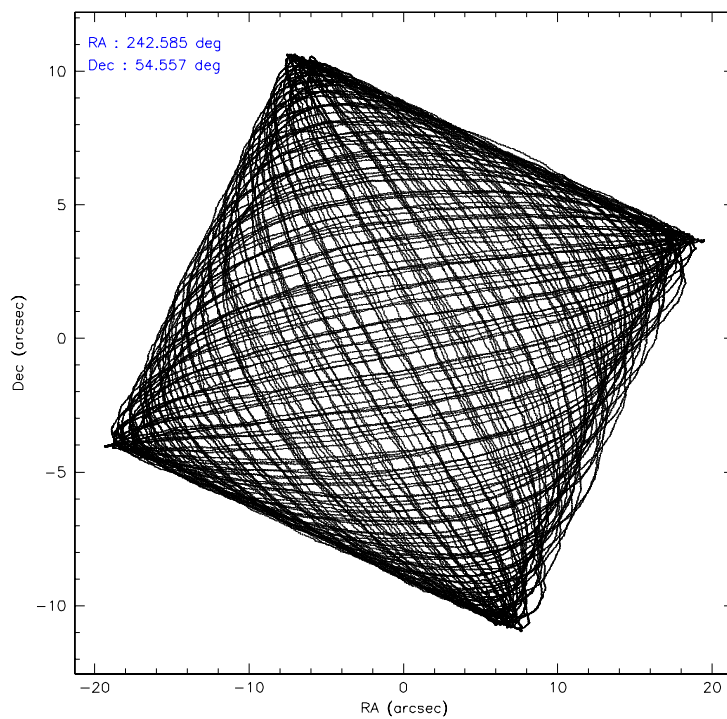
	ccd 0	ccd 1	ccd 2	ccd 3	ccd 6	ccd 8
level 1 events	412603	413476	447064	443333	447799	570573
rejected events	361414	358921	397271	390443	395301	460926
rejected %	87%	86%	88%	88%	88%	80%

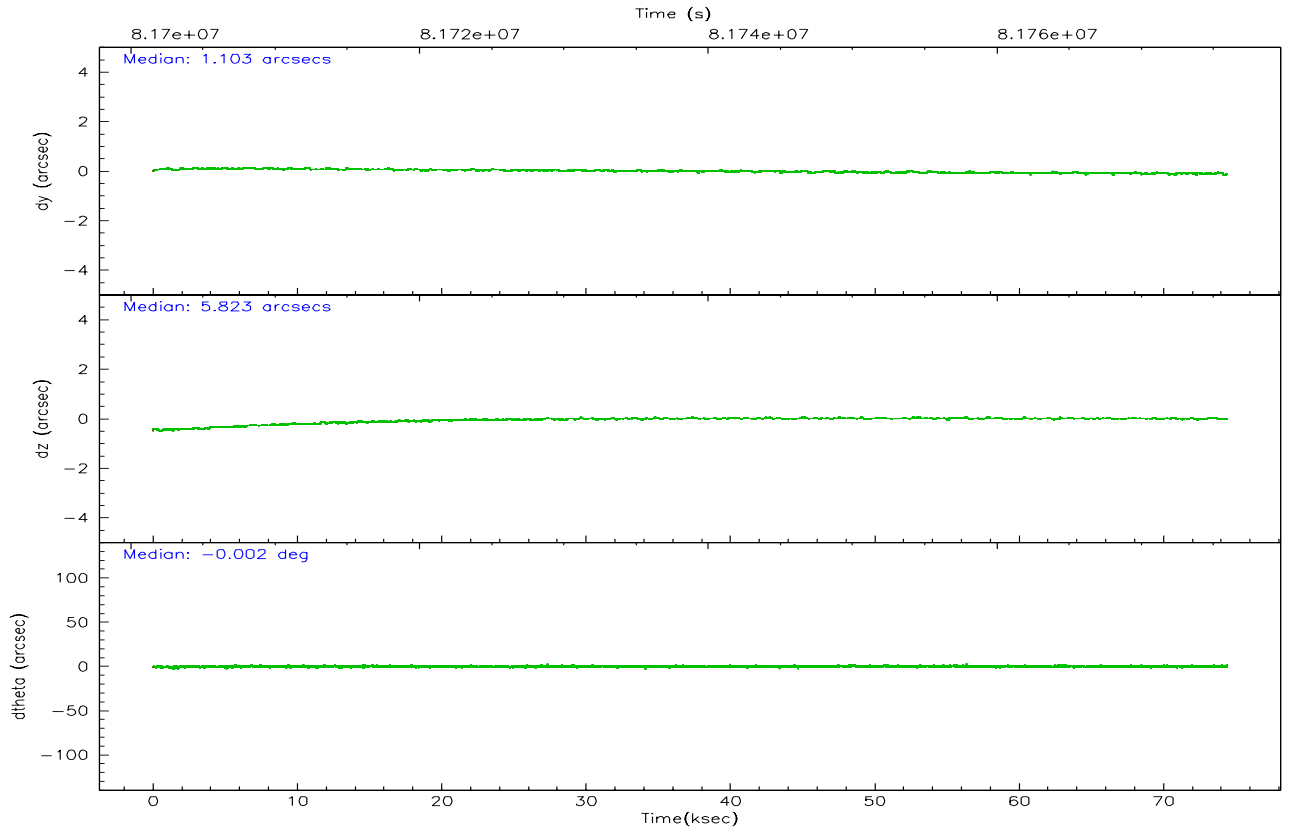
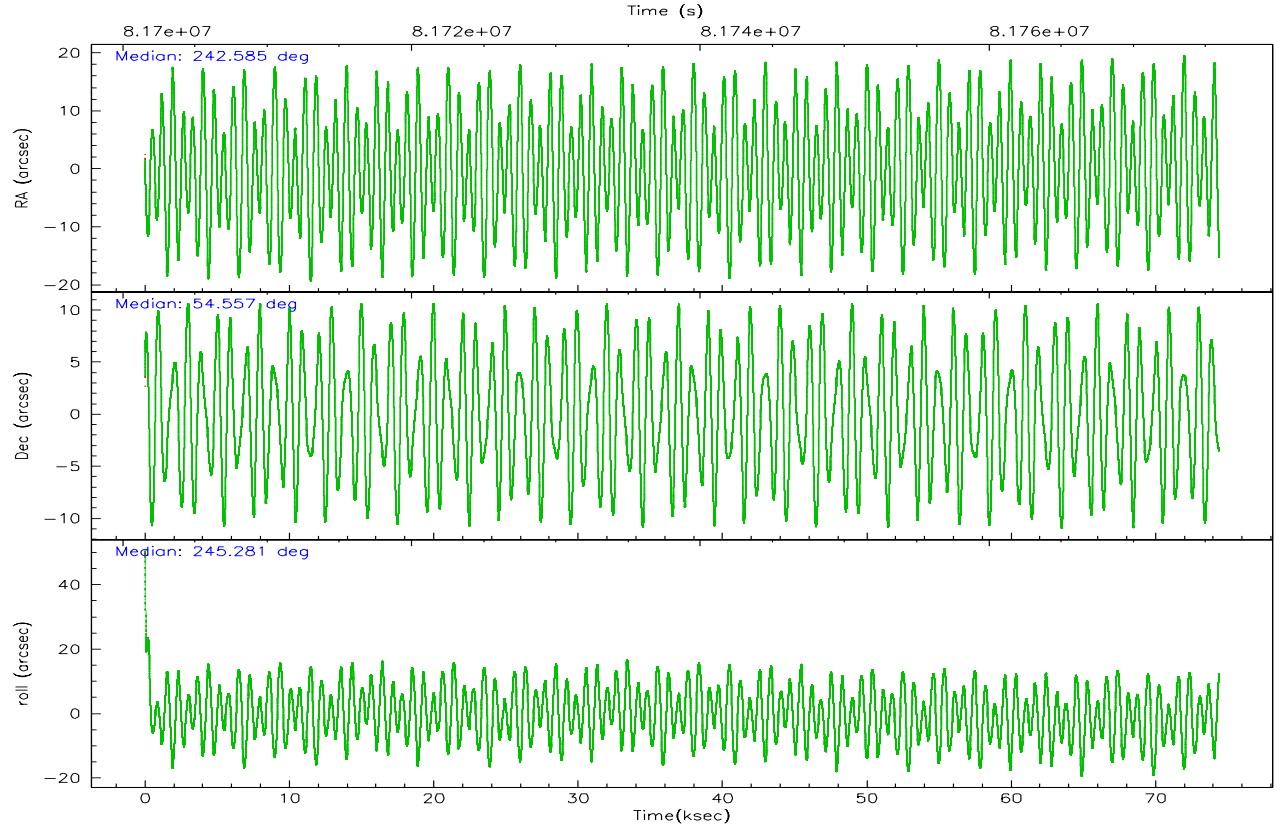
	ccd 0	ccd 1	ccd 2	ccd 3	ccd 6	ccd 8
grade 0 events	22137	23070	21841	24593	23146	35637
	5%	5%	4%	5%	5%	6%
grade 1 events	217	193	208	209	194	292
	0%	0%	0%	0%	0%	0%
grade 2 events	10779	10692	10525	10131	9967	23498
	2%	2%	2%	2%	2%	4%
grade 3 events	5085	5554	4486	4841	5030	11492
	1%	1%	1%	1%	1%	2%
grade 4 events	4765	5375	4620	4679	4848	10769
	1%	1%	1%	1%	1%	1%
grade 5 events	14768	15748	14114	15793	16925	22563
	3%	3%	3%	3%	3%	3%
grade 6 events	8435	9875	8326	8652	9513	28261
	2%	2%	1%	1%	2%	4%
grade 7 events	346417	342969	382944	374435	378176	438061
	83%	82%	85%	84%	84%	76%

2.2 Compared Parameters

Parameter	Planned	Actual	Parameter	Planned	Actual
Instrument	ACIS	ACIS	Obspar format version number	6	6
Detector	ACIS-012368	ACIS-012368	Obspar file type	PREDICTED	ACTUAL
Grating	NONE	NONE	Obspar update status	NONE	UPDATED
Data mode	FAINT	FAINT	Number of optional ACIS chips dropped	0	0
Observation mode	POINTING	POINTING	On-chip summing requested	N	N
Pointing RA	242.580789	242.5849828257712	Subarray requested	NONE	NONE
Pointing Dec	54.584137	54.55670300949959	Alternating exposures requested	N	N
Pointing Roll	245.089672	245.2949543992295	Primary exposure time	3.200000	3.2
SIM focus pos (mm)	-0.782348	-0.7809083437167272			
SIM defocus (mm)	0	0.001439871863259334			
SIM translation stage pos (mm)	-233.592463	-233.5874344608287			
SIM translation stage offset (mm)	0	-0.005018542100998502			
Observation start time	81701741.184000	81701116.37231199			
Observation start date	2000-08-03T14:54:37	2000-08-03T14:45:16			
Observation end time	81775960.184000	81776269.375108			
Observation end date	2000-08-04T11:31:36	2000-08-04T11:37:49			
Read mode	TIMED	TIMED			

2.3 Aspect



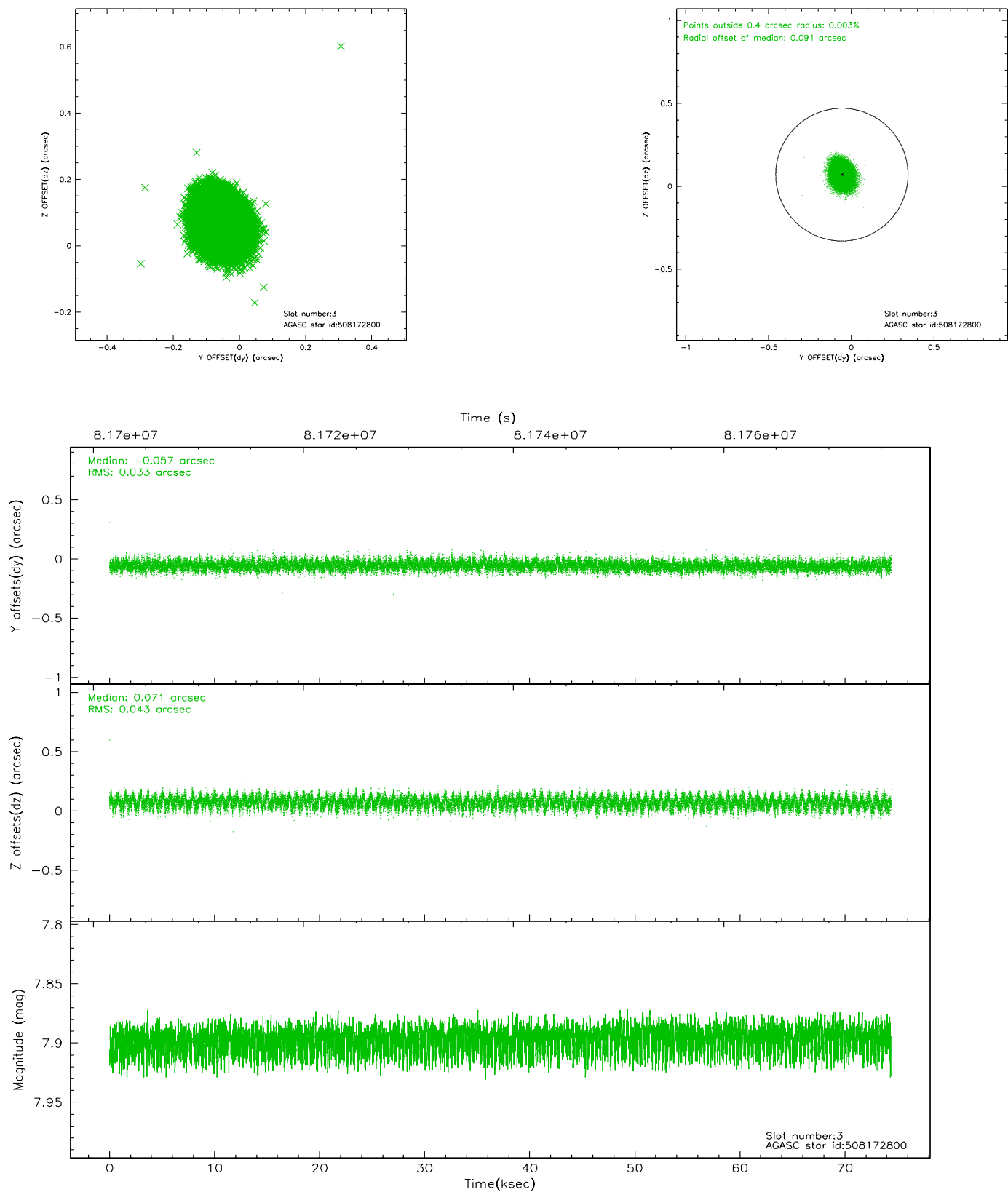


Slot Statistics

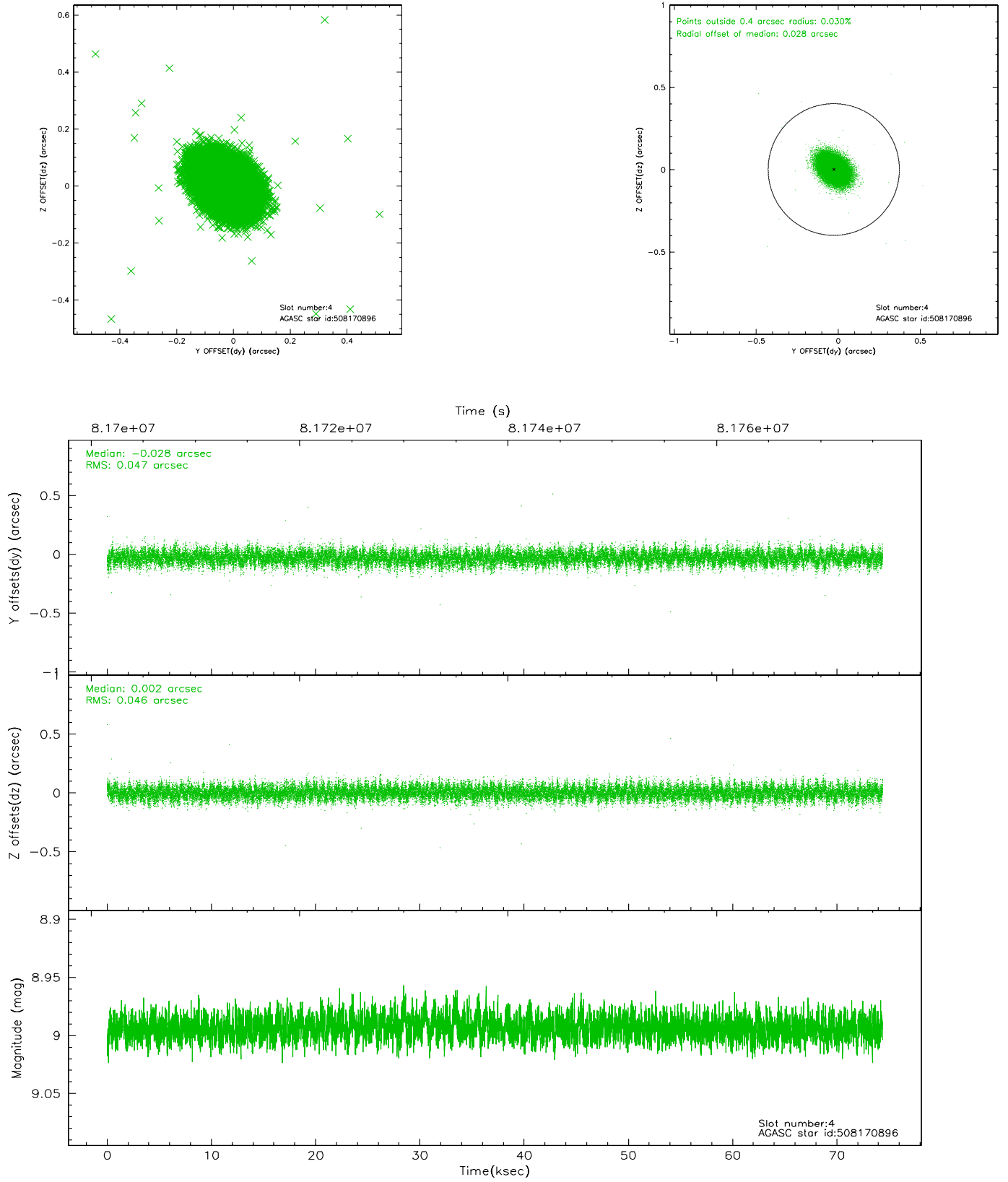
slot	status	id	mag	n_pts	med_dy	med_dz	dr1	dr2	ra	dec	mean_y	mean_z
0	FID	ACIS-I-2	7.15	18145	-0.019	-0.027	0.009	0.016	0.000000	0.000000	-755.45	-835.52
1	FID	ACIS-I-4	7.18	18145	-0.089	0.028	0.006	0.010	0.000000	0.000000	2158.57	1070.74
2	FID	ACIS-I-5	7.23	18147	0.007	0.068	0.009	0.015	0.000000	0.000000	-1809.33	1068.56
3	GUIDE	508172800	7.90	36294	-0.057	0.071	0.059	0.095	242.573753	54.657892	-234.56	-125.28
4	GUIDE	508170896	8.99	36280	-0.028	0.002	0.069	0.115	242.052968	54.527984	644.34	-916.69
5	GUIDE	508167416	9.22	36282	-0.024	-0.010	0.090	0.147	242.739648	54.324576	706.60	695.86
6	GUIDE	508168152	9.43	36274	0.047	-0.008	0.090	0.150	241.888534	54.357327	1346.21	-976.03
7	GUIDE	508170024	9.39	36282	0.064	-0.056	0.077	0.127	241.730655	54.371050	1437.45	-1298.27

2.4 Star Slots

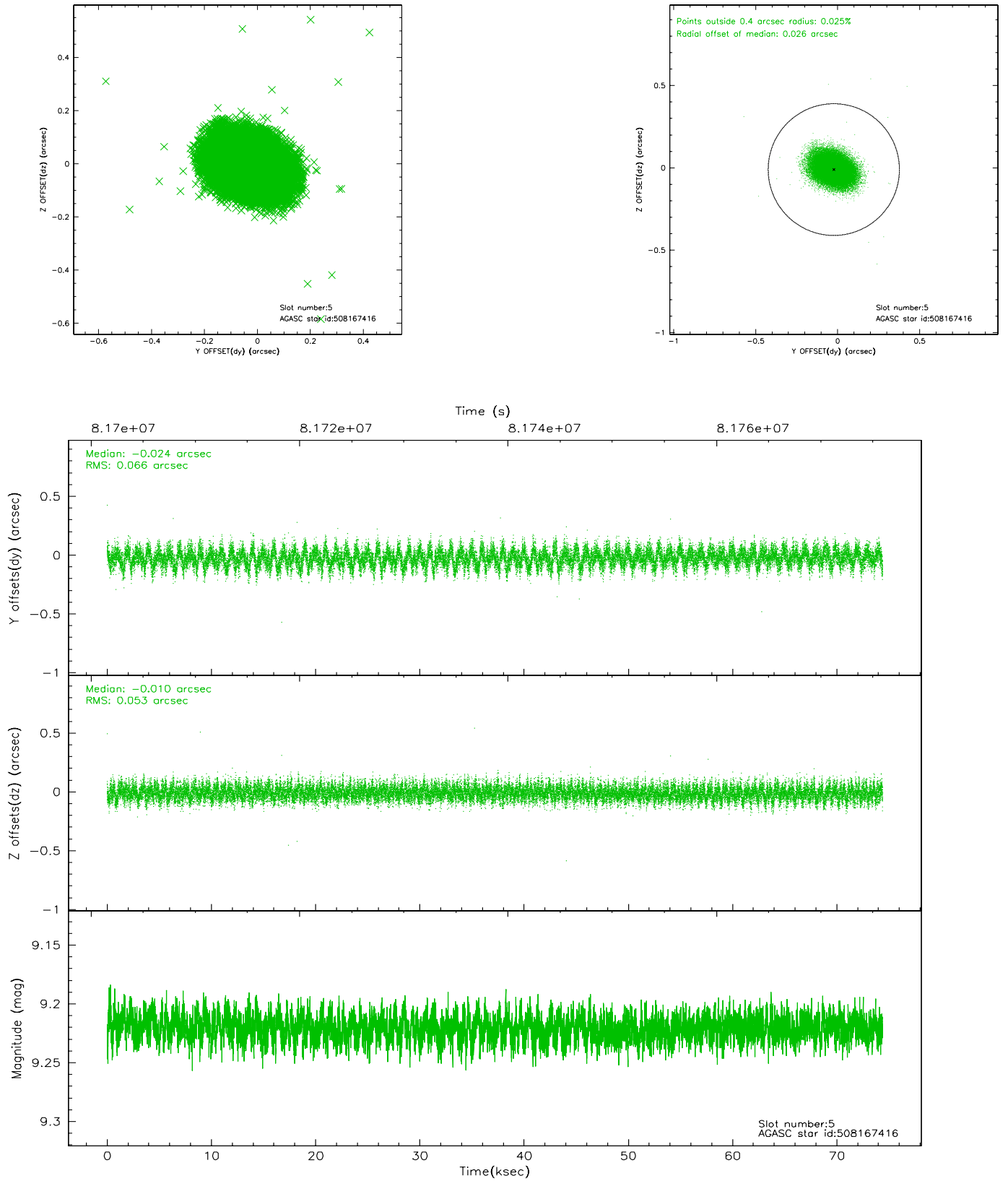
2.4.1 Slot 3



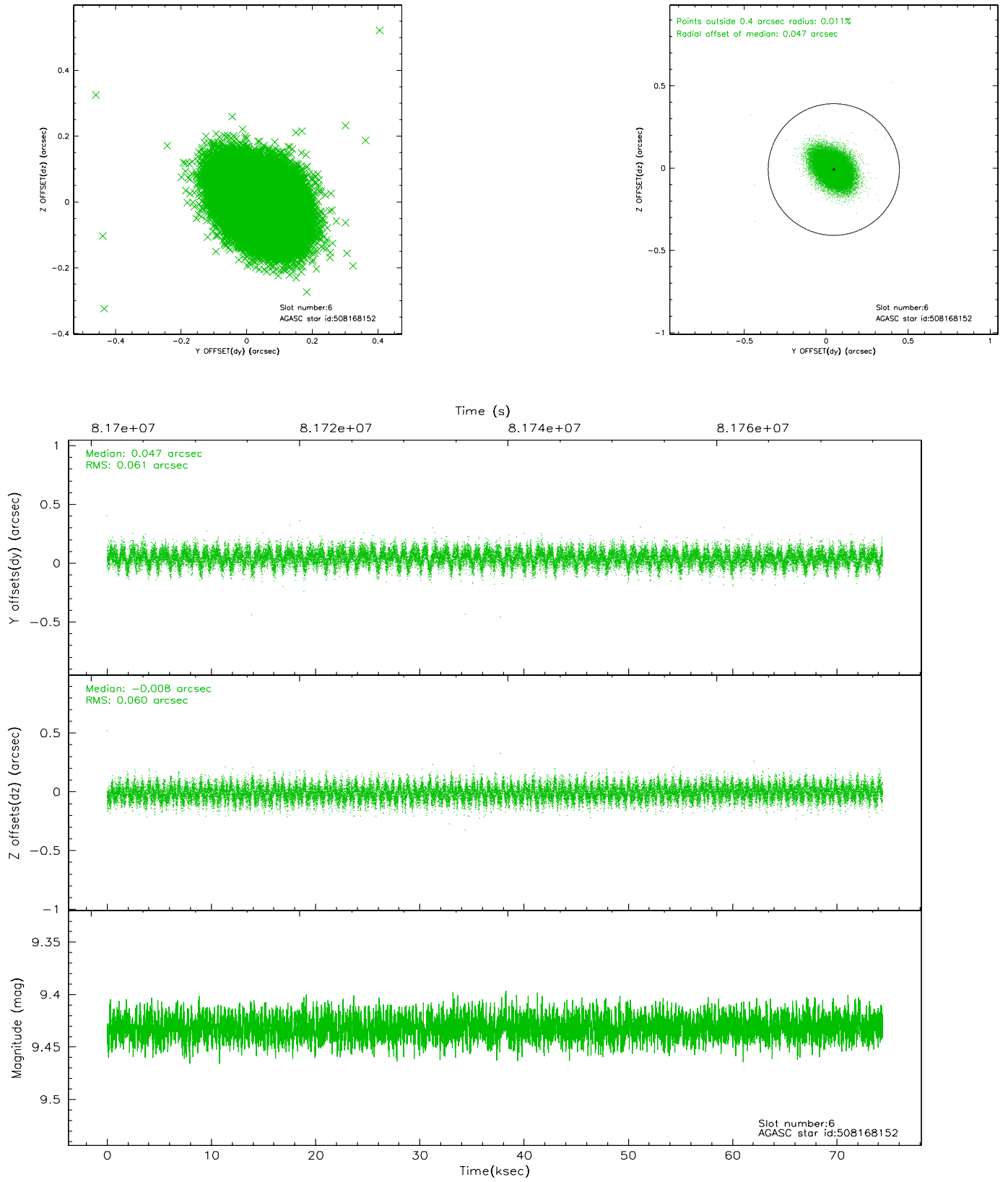
2.4.2 Slot 4



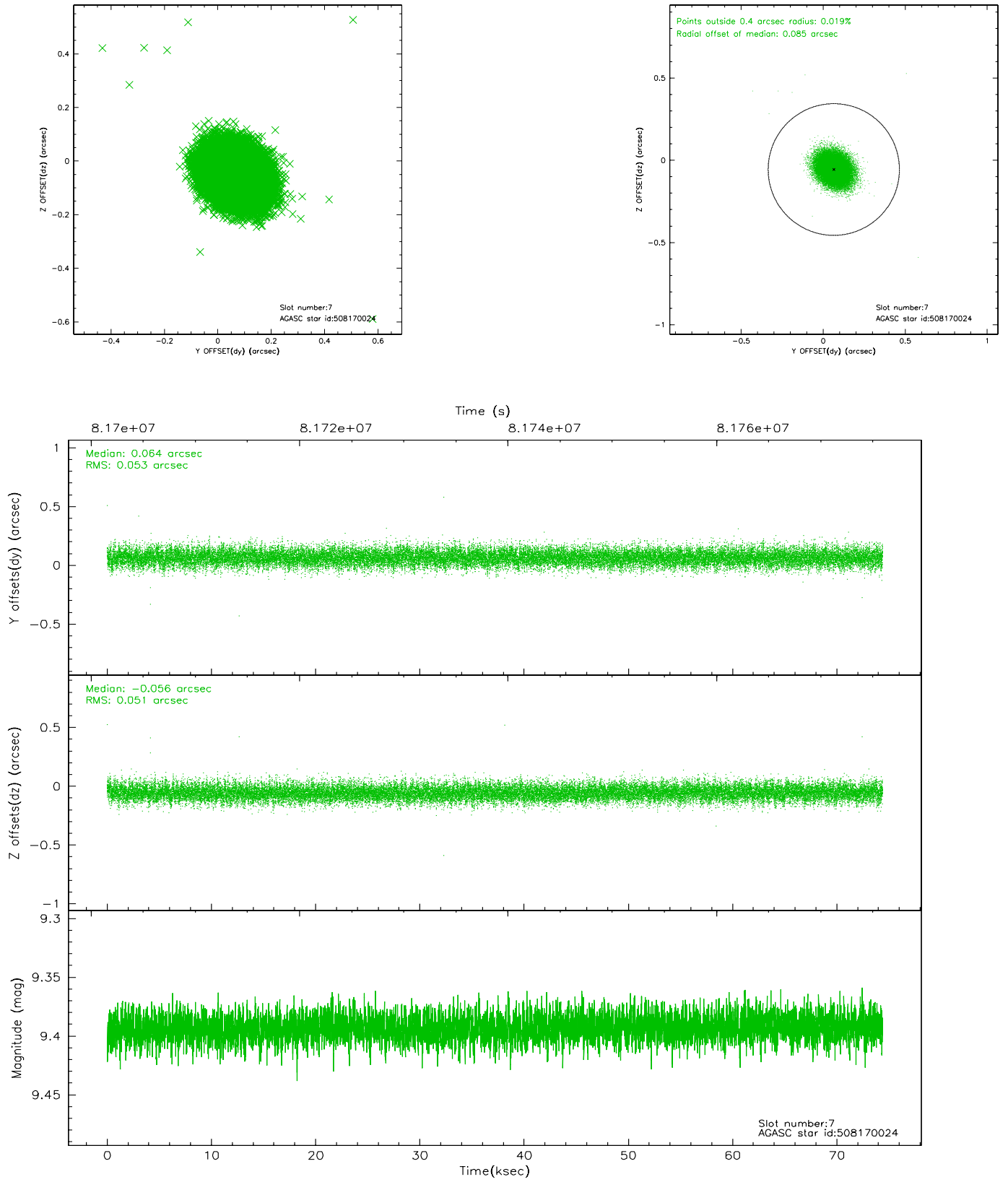
2.4.3 Slot 5



2.4.4 Slot 6

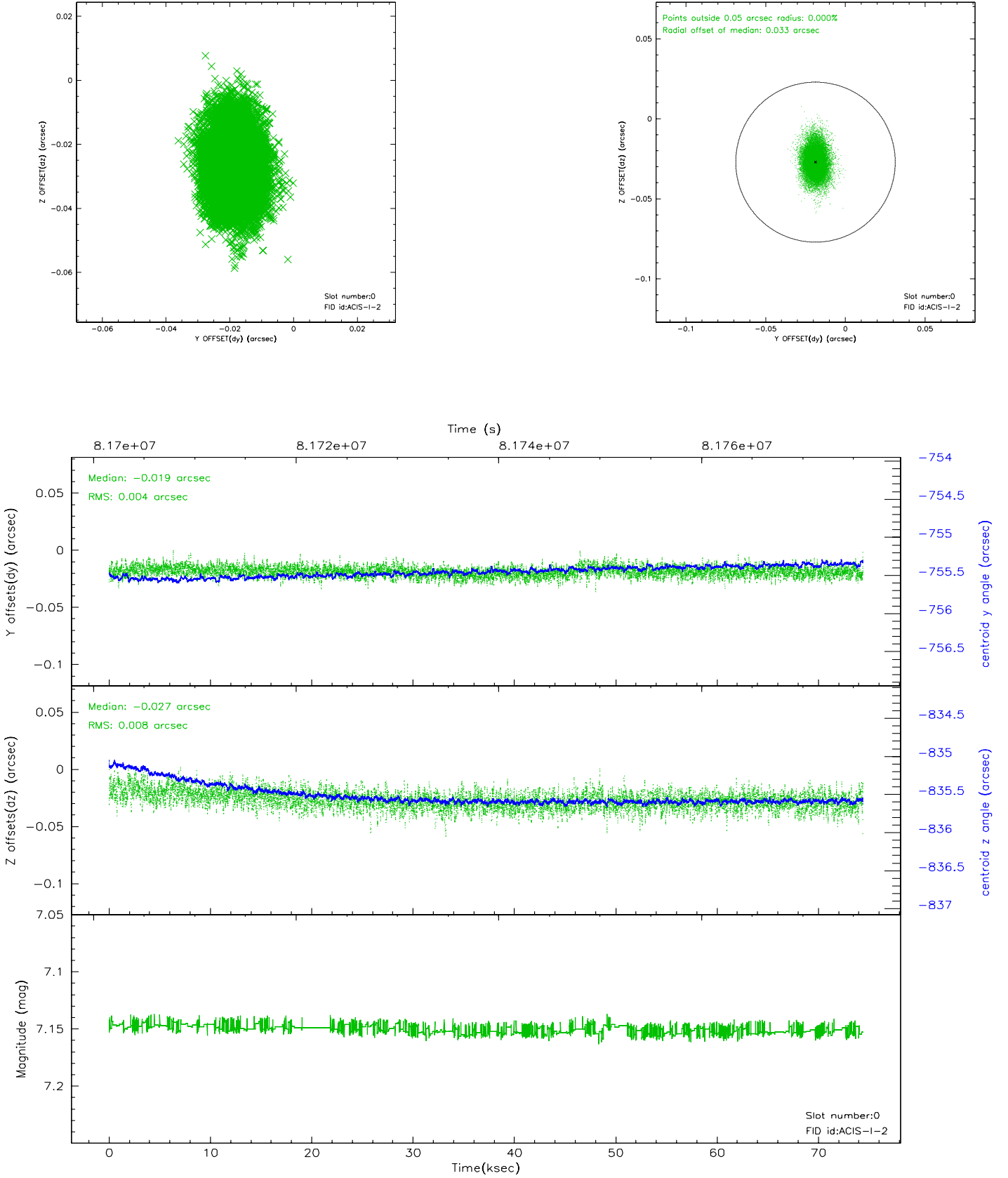


2.4.5 Slot 7

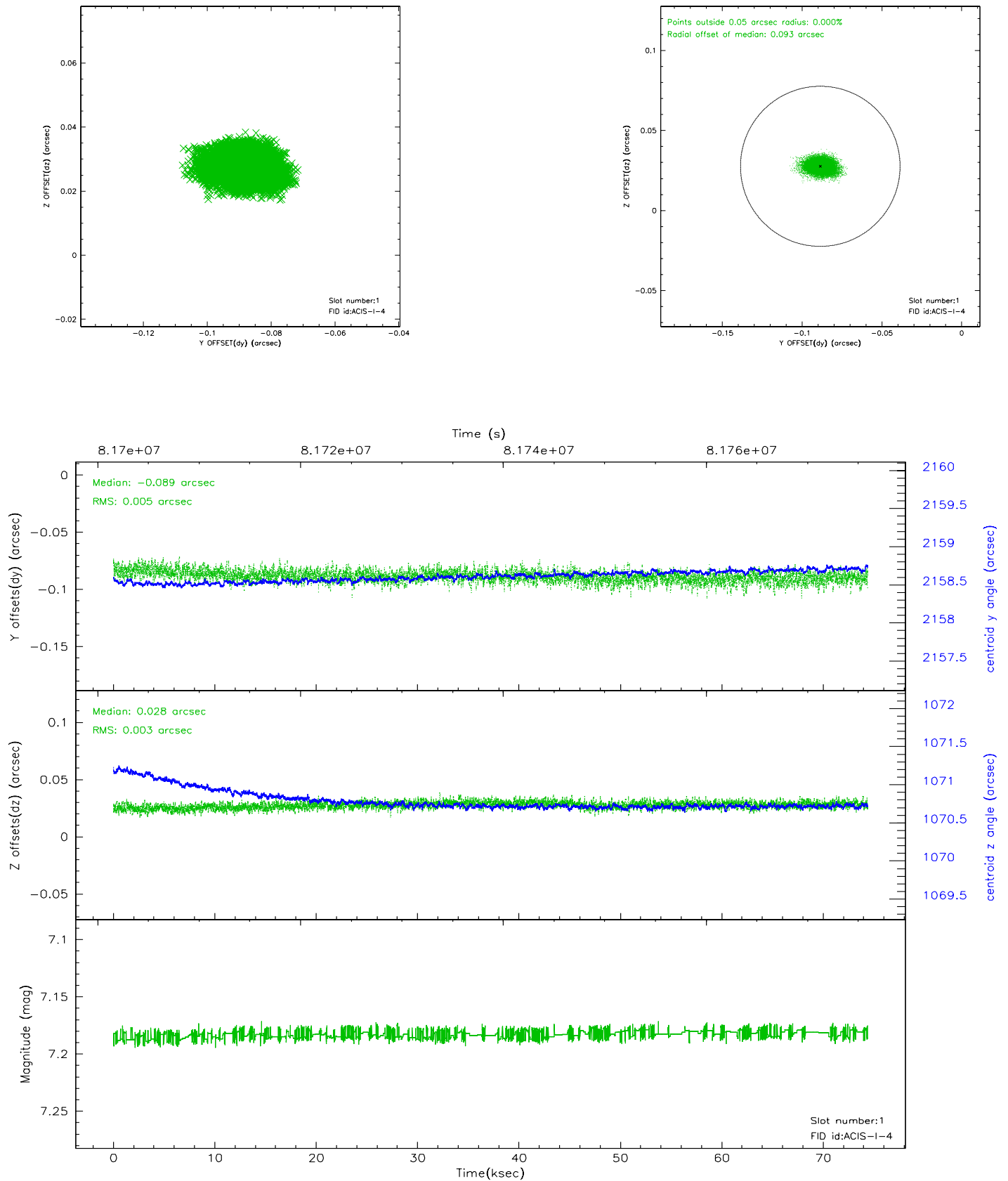


2.5 FID Slots

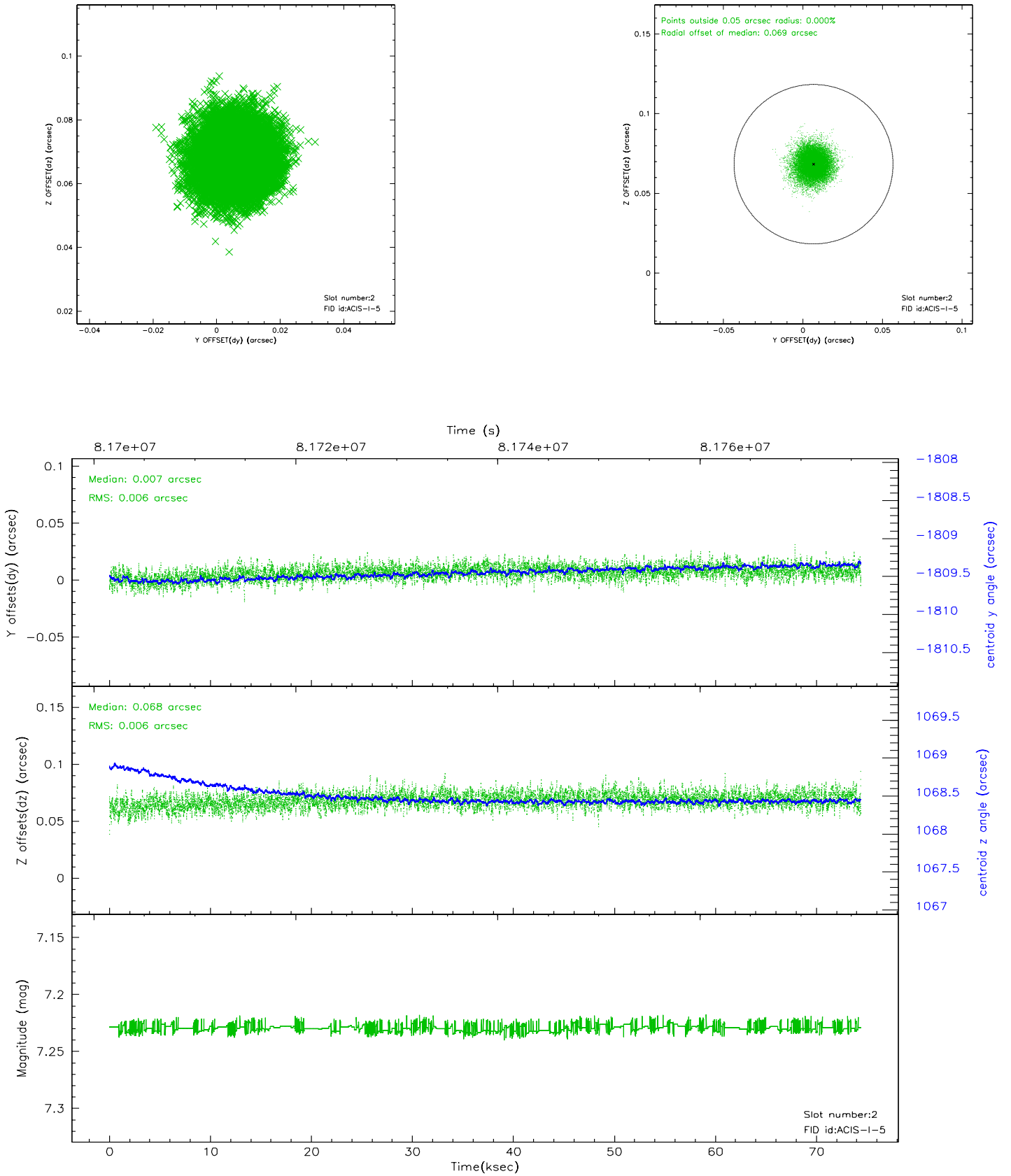
2.5.1 Slot 0



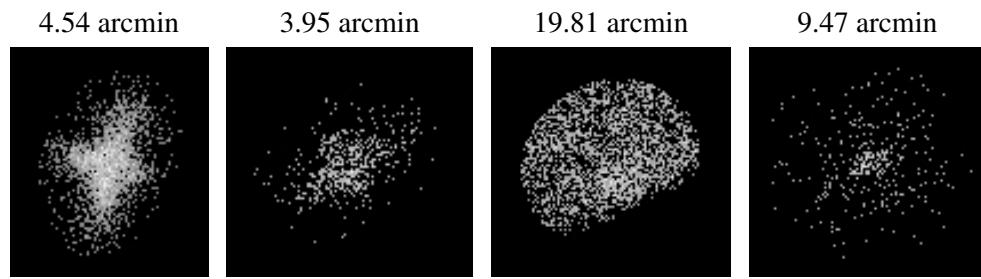
2.5.2 Slot 1



2.5.3 Slot 2



3 Point Sources



A Summary

A.1 Status

V&V Scientist	Beth Sundheim
V&V Date (YYYY-MM-DD)	2007.06.05
V&V Edition	1
V&V Disposition and Status	OK
V&V Charge Time	73.974

A.2 Comments