

V&V Reference Report

L2 ASCDS Version : 8.4.5

Observation 878 - L2 Version 4
Chandra X-Ray Center

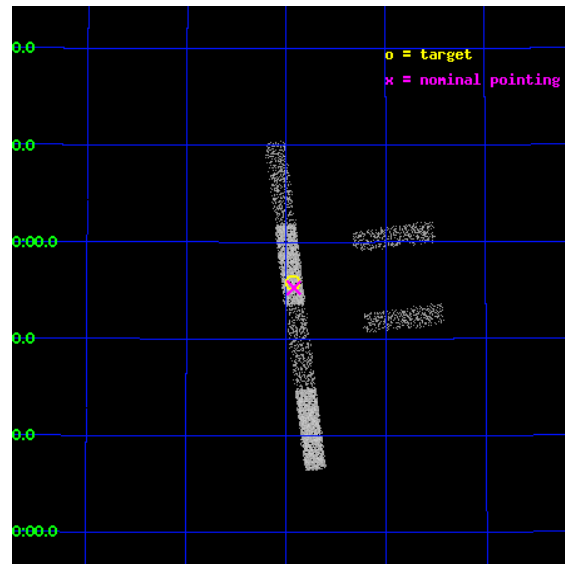
L2 Processing Date : Aug 29 2012

Contents

1	Front	2
2	OBI	3
2.1	OBI	3
2.1.1	Images	3
2.1.2	Bias	3
2.1.3	Parameters	4
2.1.4	Events	4
2.2	Compared Parameters	5
2.3	Aspect	6
2.4	Star Slots	9
2.4.1	Slot 3	9
2.4.2	Slot 4	10
2.4.3	Slot 5	11
2.4.4	Slot 6	12
2.4.5	Slot 7	13
2.5	FID Slots	14
2.5.1	Slot 0	14
2.5.2	Slot 1	15
2.5.3	Slot 2	16
A	Summary	17
A.1	Status	17
A.2	Comments	17

1 Front

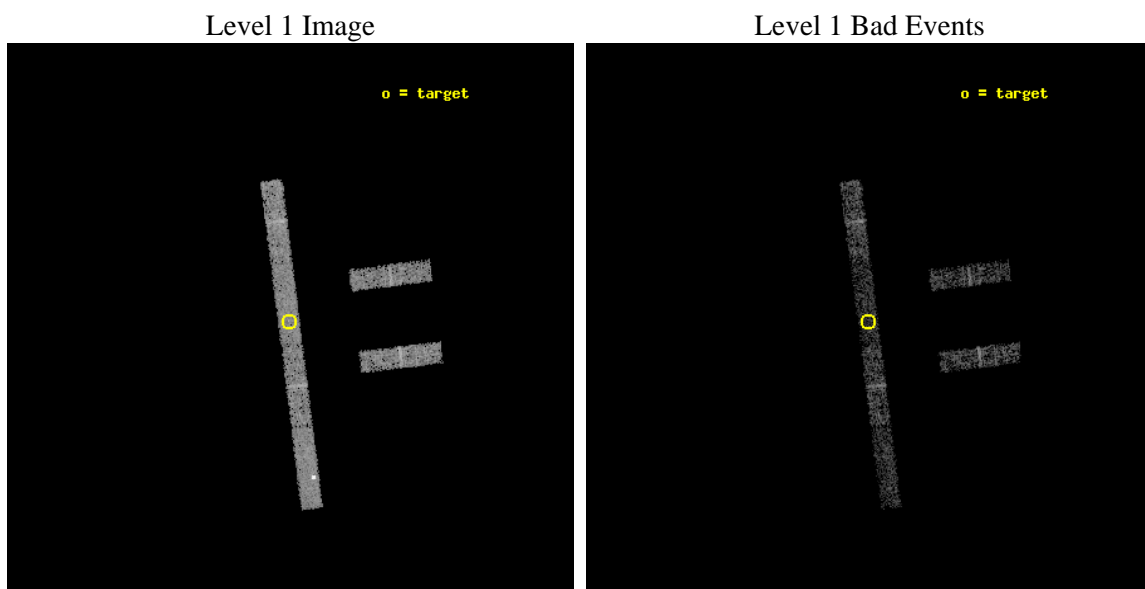
seq_num	700183	Sequence number
obs_id	878	Observation id
title	SURVEY OF RADIO QUIET \$Z>4\$ QUASARS	Proposal title
observer	Dr. Jill Bechtold	Principal investigator
object	PSS 1057+4555	Source name
dtcycle	0	
cycle	P	events from which exps? Prim/Second/Both
ra_targ	164.485	Observer's specified target RA [deg]
dec_targ	45.931111	Observer's specified target Dec [deg]
ra_nom	164.48069419841	Nominal RA [deg]
dec_nom	45.921421513907	Nominal Dec [deg]
roll_nom	262.84669946242	Nominal Roll [deg]
revision	4	Processing version of data
ontime	2911.6999842227	Sum of GTIs [s]
liveltime	2806.9743239894	Livetime [s]
ontime2	2911.6999842227	Sum of GTIs [s]
ontime3	2911.6999842227	Sum of GTIs [s]
ontime5	2911.6999842227	Sum of GTIs [s]
ontime6	2911.6999842227	Sum of GTIs [s]
ontime7	2911.6999842227	Sum of GTIs [s]
ontime8	2911.6999842227	Sum of GTIs [s]
l2events	7809	Number of level 2 events



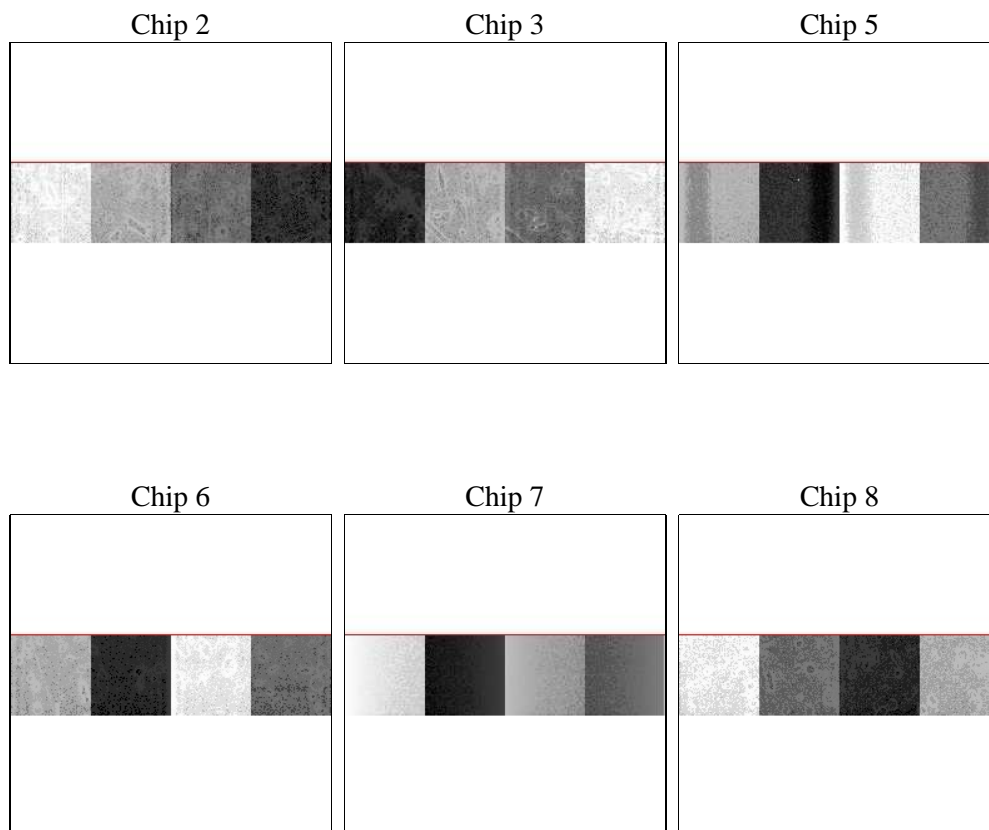
2 OBI

2.1 OBI

2.1.1 Images



2.1.2 Bias



2.1.3 Parameters

obi_num	0	Obi number	sched_exp_time	3300.000000	[s] Scheduled observation exposure time
ascdsver	8.4.5	Processing system revision	ontime	2911.6999842227	Sum of GTIs [s]
caldsver	4.5.1.1	 	ontime2	2911.6999842227	Sum of GTIs [s]
date	2012-08-29T07:13:40	Date and time of file creation	ontime3	2911.6999842227	Sum of GTIs [s]
revision	4	Processing version of data	ontime5	2911.6999842227	Sum of GTIs [s]
			ontime6	2911.6999842227	Sum of GTIs [s]
			ontime7	2911.6999842227	Sum of GTIs [s]
			ontime8	2911.6999842227	Sum of GTIs [s]
			l1events	39284	Number of level 1 events

2.1.4 Events

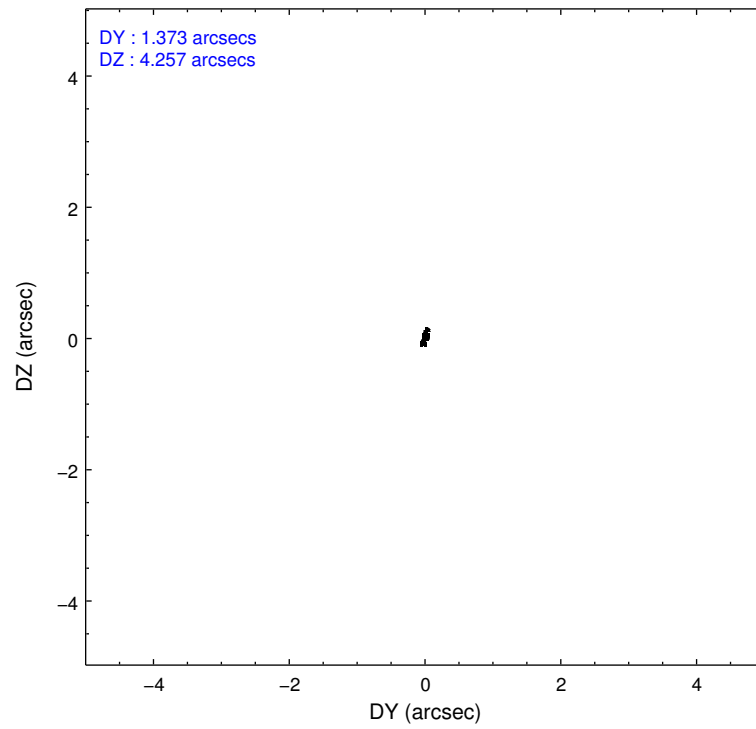
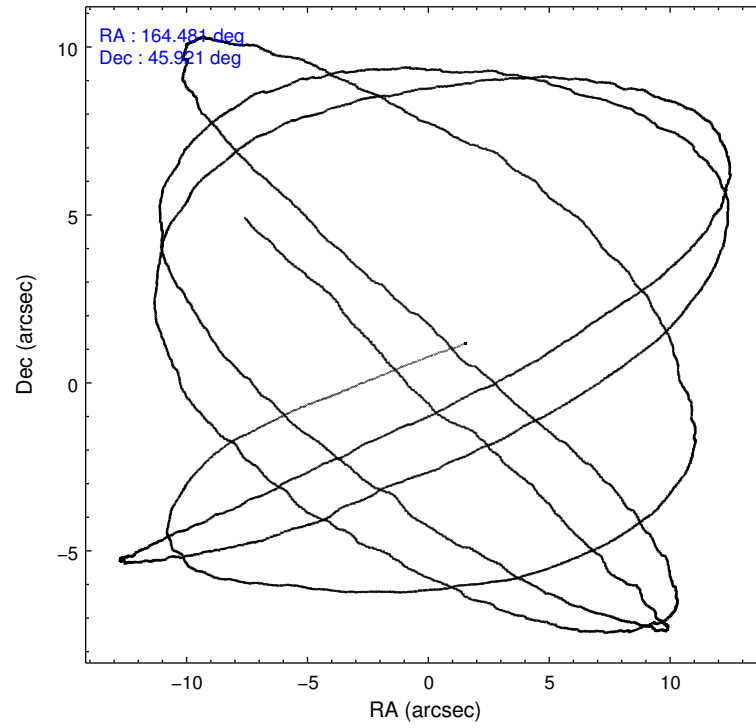
	ccd 2	ccd 3	ccd 5	ccd 6	ccd 7	ccd 8
level 1 events	6048	5162	8920	5855	6121	7178
rejected events	5457	4588	3208	5231	3279	6030
rejected %	90%	88%	35%	89%	53%	84%

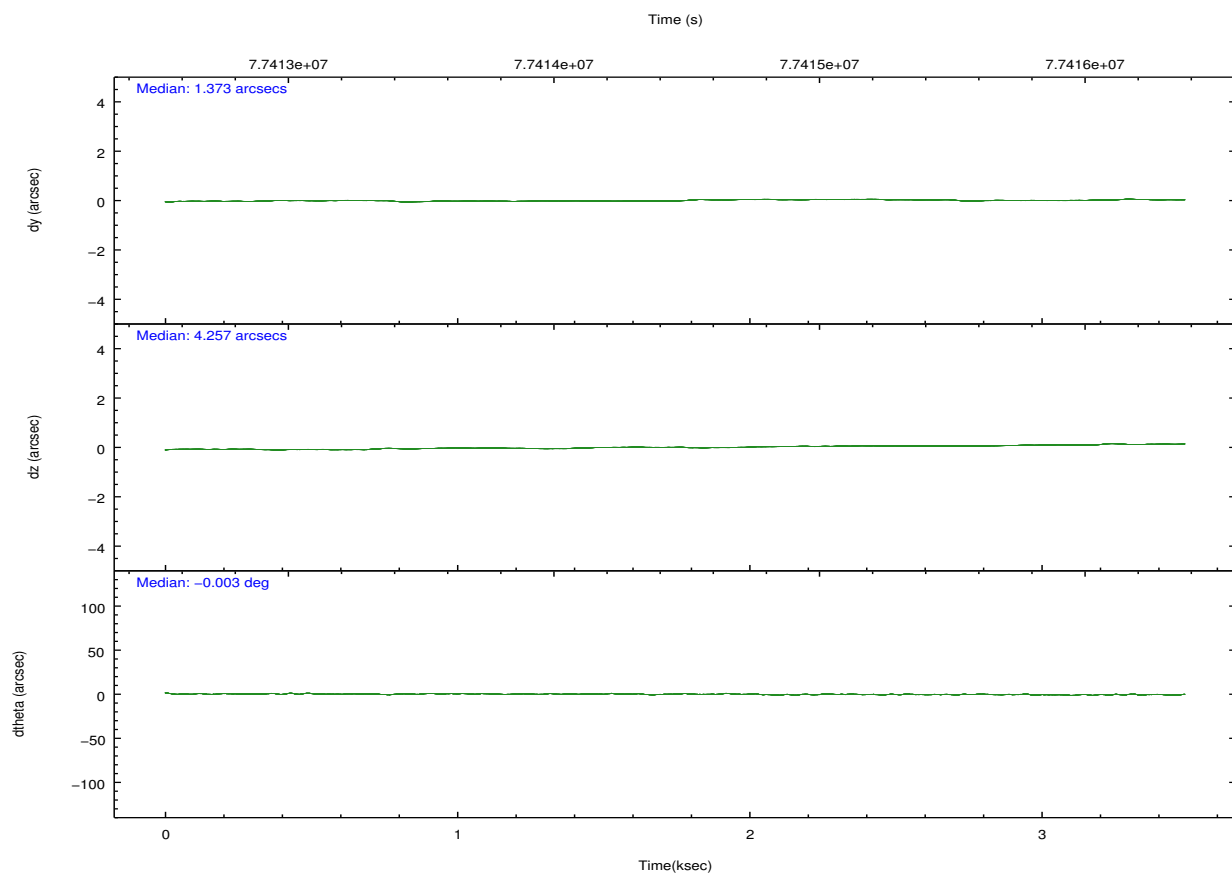
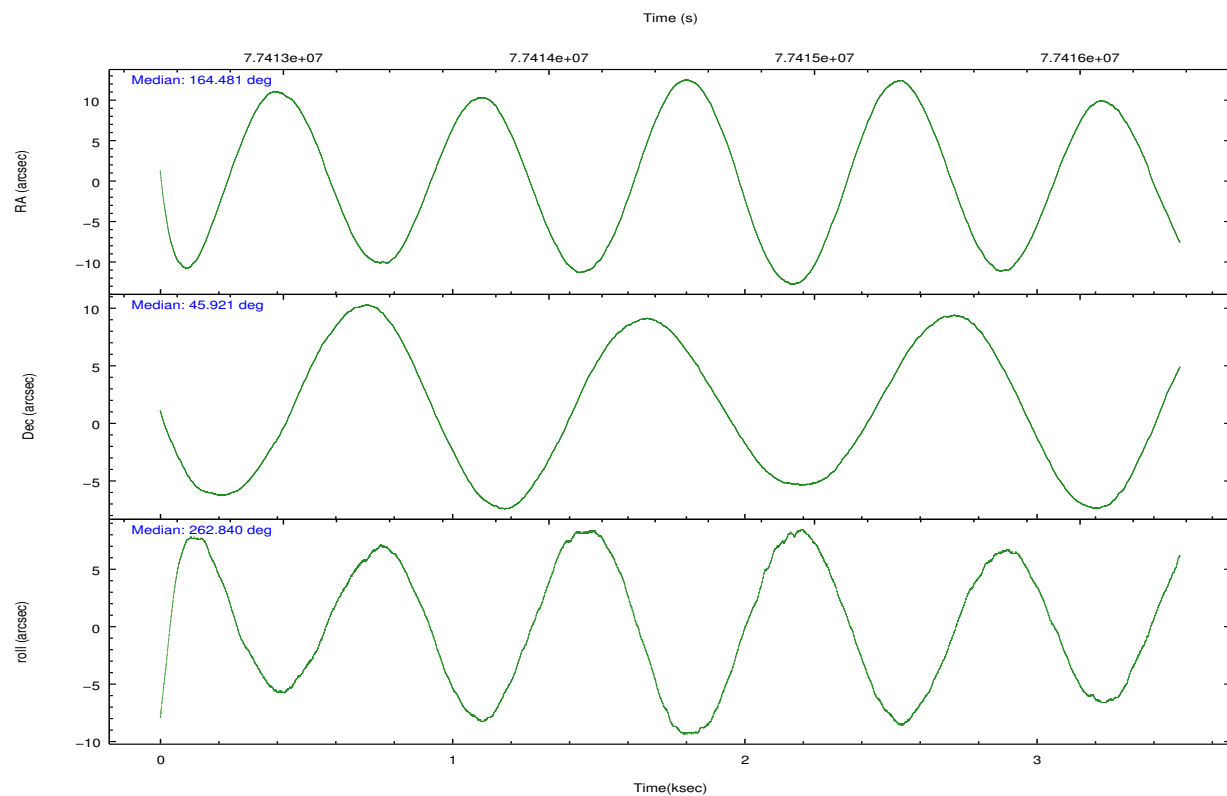
	ccd 2	ccd 3	ccd 5	ccd 6	ccd 7	ccd 8
grade 0 events	211	214	2890	251	369	357
	3%	4%	32%	4%	6%	4%
grade 1 events	0	3	9	1	7	1
	0%	0%	0%	0%	0%	0%
grade 2 events	103	105	937	101	564	225
	1%	2%	10%	1%	9%	3%
grade 3 events	95	82	227	89	292	128
	1%	1%	2%	1%	4%	1%
grade 4 events	85	85	236	81	301	121
	1%	1%	2%	1%	4%	1%
grade 5 events	159	142	564	185	527	203
	2%	2%	6%	3%	8%	2%
grade 6 events	99	89	1428	103	1316	318
	1%	1%	16%	1%	21%	4%
grade 7 events	5296	4442	2629	5044	2745	5825
	87%	86%	29%	86%	44%	81%

2.2 Compared Parameters

Parameter	Planned	Actual	Parameter	Planned	Actual
Instrument	ACIS	ACIS	Obspar format version number	7	7
Detector	ACIS-235678	ACIS-235678	Obspar file type	PREDICTED	ACTUAL
Grating	NONE	NONE	Obspar update status	NONE	UPDATED
Data mode	VFAINT	VFAINT	Number of optional ACIS chips dropped	0	0
Observation mode	POINTING	POINTING	On-chip summing requested	N	N
[deg] Pointing RA	164.465185	164.4806941984061	Subarray requested	CUSTOM	1/4
[deg] Pointing Dec	45.946823	45.92142151390683	Subarray start row	385	385
[deg] Pointing Roll	262.701248	262.8466994624189	Subarray row count	256	256
[mm] SIM focus pos	-0.684267	-0.6828225247311905	Alternating exposures requested	N	N
[mm] SIM defocus	0	0.001444936568705701	[s] Primary exposure time	0.000000	1.1
[mm] SIM translation stage pos	-190.132523	-190.1400660498719			
[mm] SIM translation stage offset	0	0.00754346686406393			
[s] Observation start time (MET)	77412901.184000	77412137.98870499			
Observation start date	2000-06-14T23:33:57	2000-06-14T23:22:17			
[s] Observation end time (MET)	77416201.184000	77417027.238885			
Observation end date	2000-06-15T00:28:57	2000-06-15T00:43:47			
Read mode	TIMED	TIMED			

2.3 Aspect



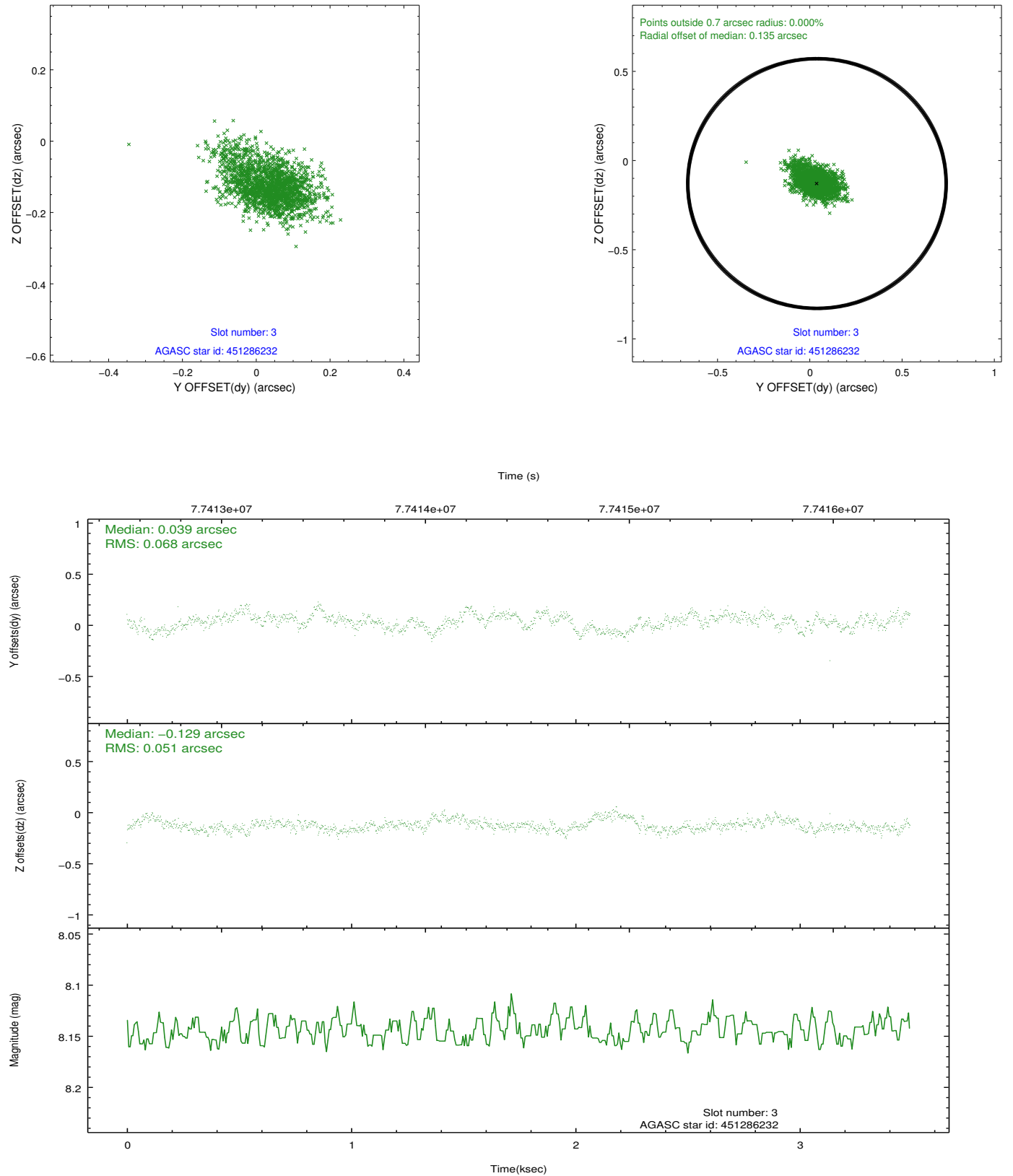


Slot Statistics

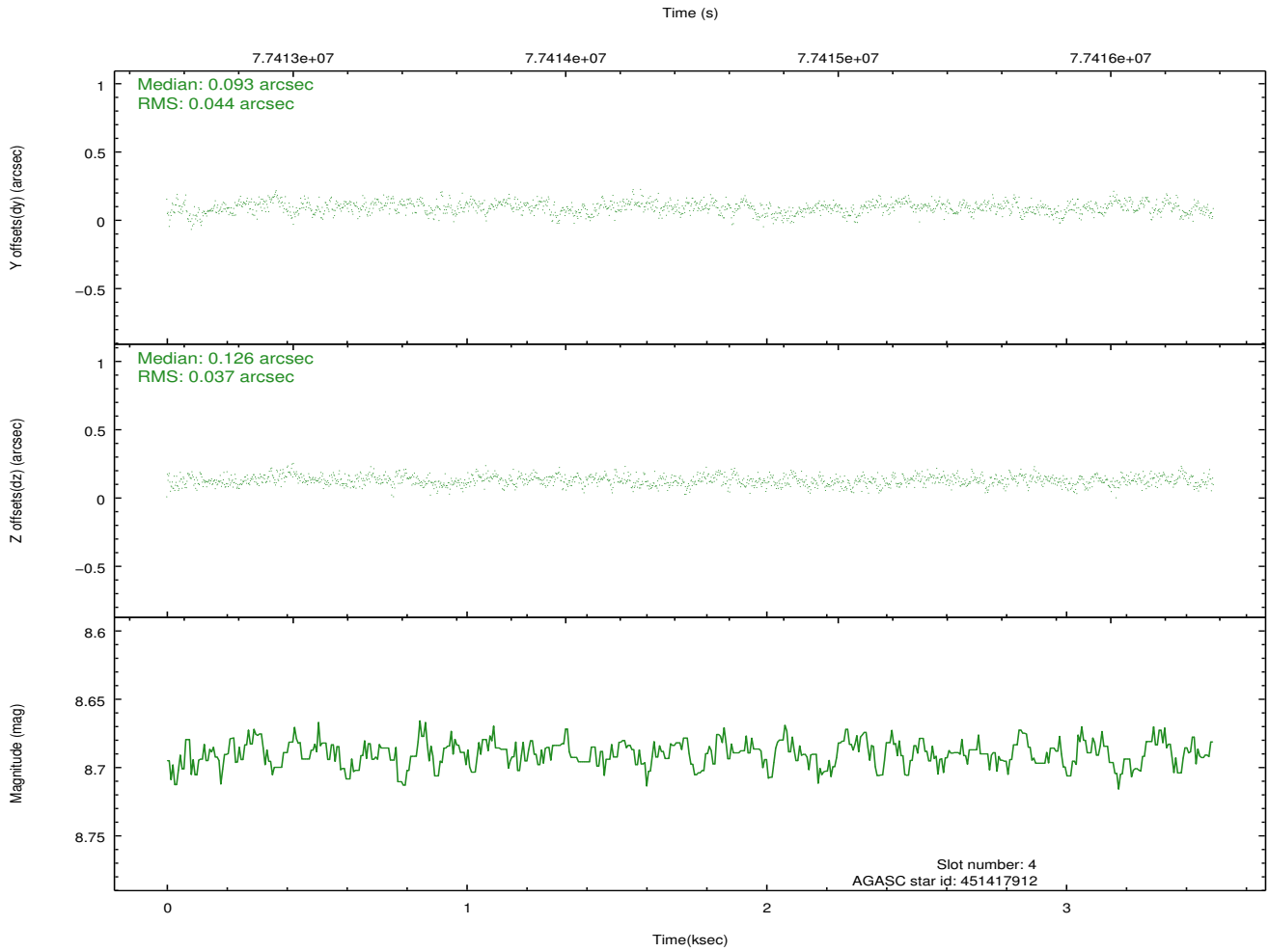
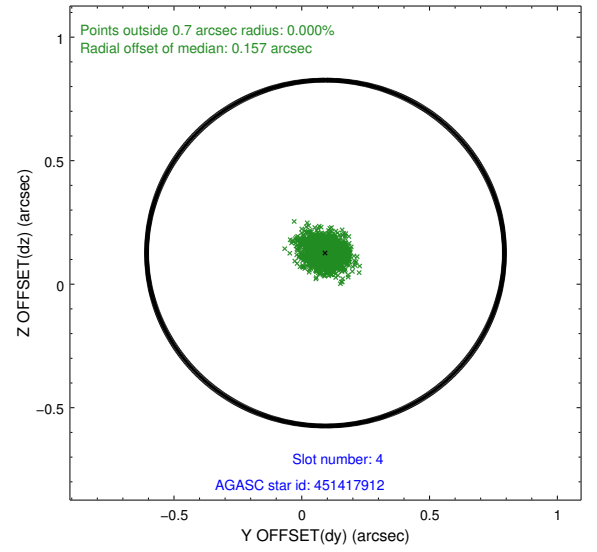
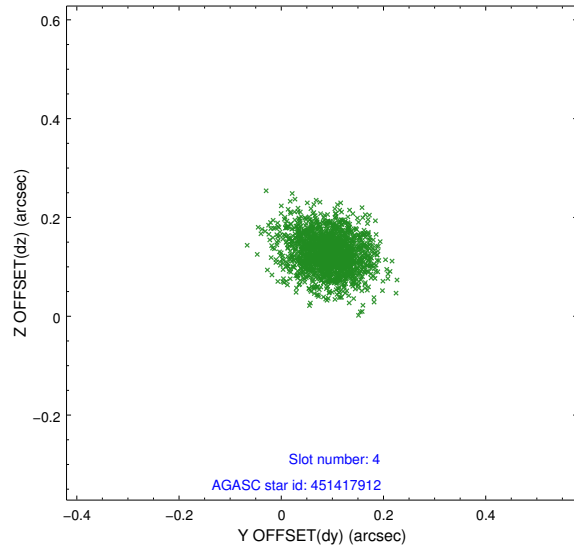
slot	status	id	mag	n_pts	med_dy	med_dz	dr1	dr2	ra	dec	mean_y	mean_z
0	FID	ACIS-S-2	7.10	852	-0.019	-0.007	0.006	0.010	0.000000	0.000000	-754.01	-1725.35
1	FID	ACIS-S-4	7.20	852	-0.014	0.011	0.005	0.010	0.000000	0.000000	2158.48	181.25
2	FID	ACIS-S-5	7.23	851	0.001	0.005	0.007	0.011	0.000000	0.000000	-1804.48	177.02
3	GUIDE	451286232	8.14	1703	0.039	-0.129	0.086	0.152	164.063215	45.770459	755.84	-921.97
4	GUIDE	451417912	8.69	1704	0.093	0.126	0.061	0.102	165.267188	45.310421	2004.98	2302.65
5	GUIDE	451282432	9.32	1704	0.067	0.072	0.079	0.131	164.917533	45.788579	418.92	1198.73
6	GUIDE	451417856	9.19	1704	-0.071	-0.018	0.089	0.147	165.349012	45.670737	691.33	2329.79
7	GUIDE	451283664	10.57	1703	-0.118	-0.061	0.150	0.243	163.880236	46.489396	-1757.87	-1686.92

2.4 Star Slots

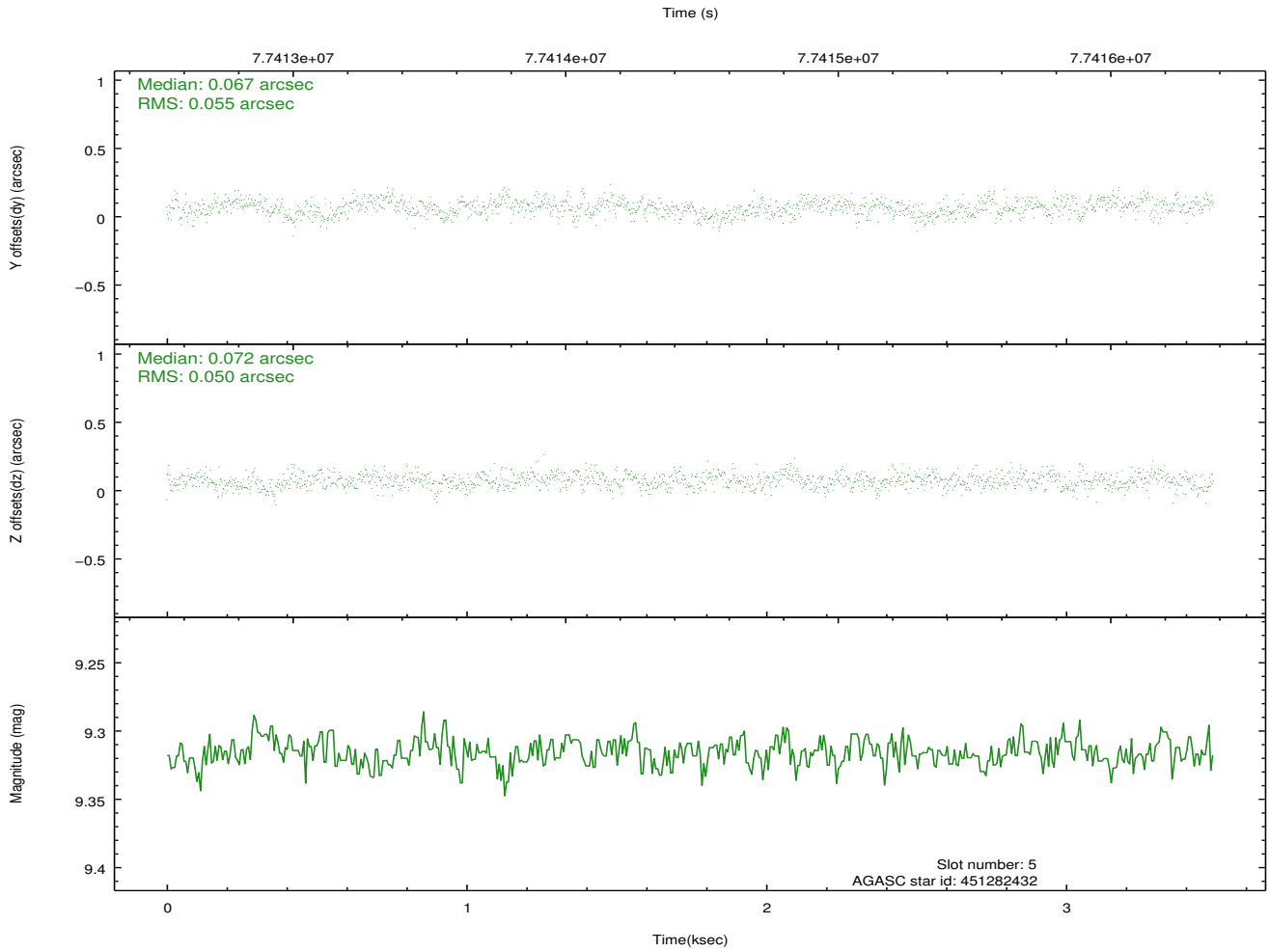
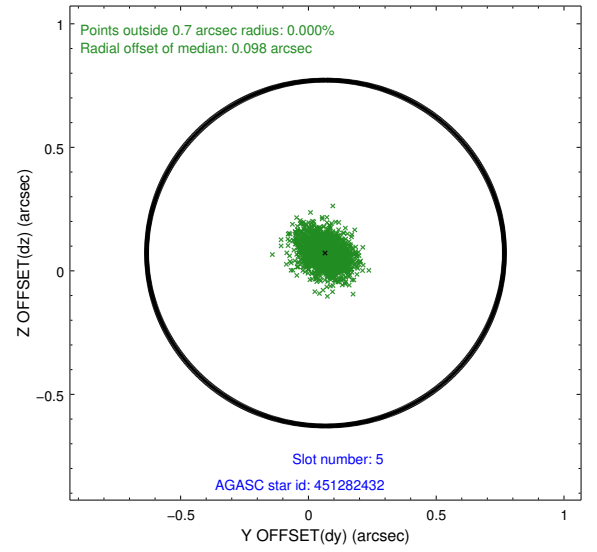
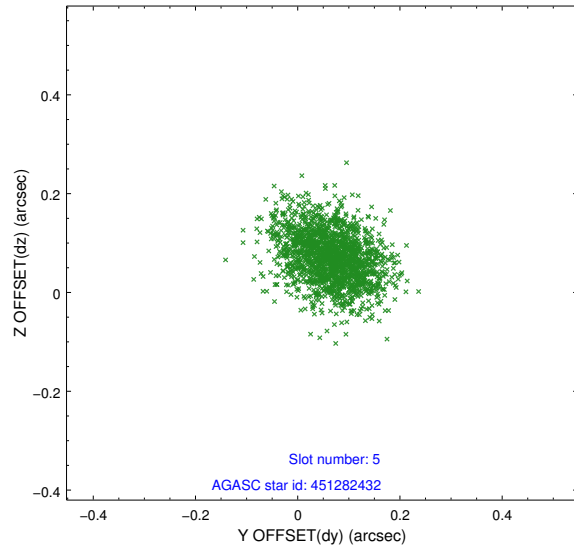
2.4.1 Slot 3



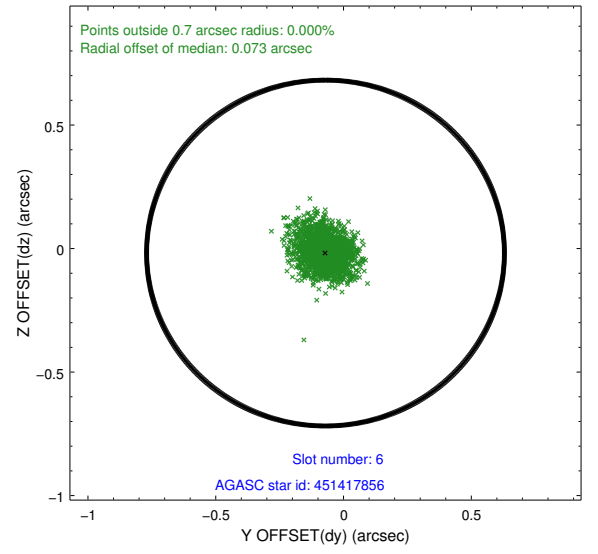
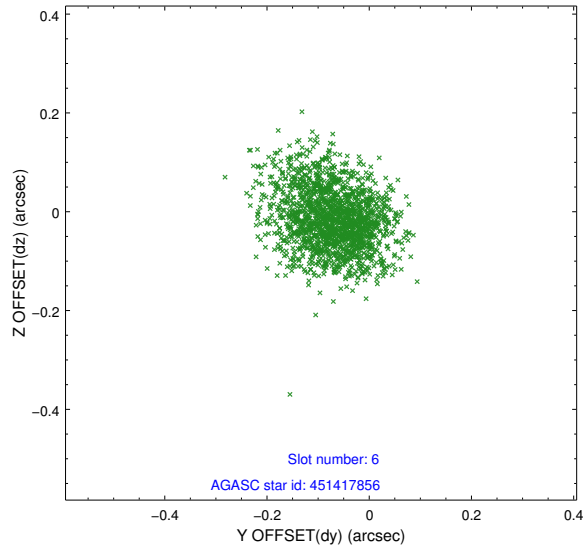
2.4.2 Slot 4



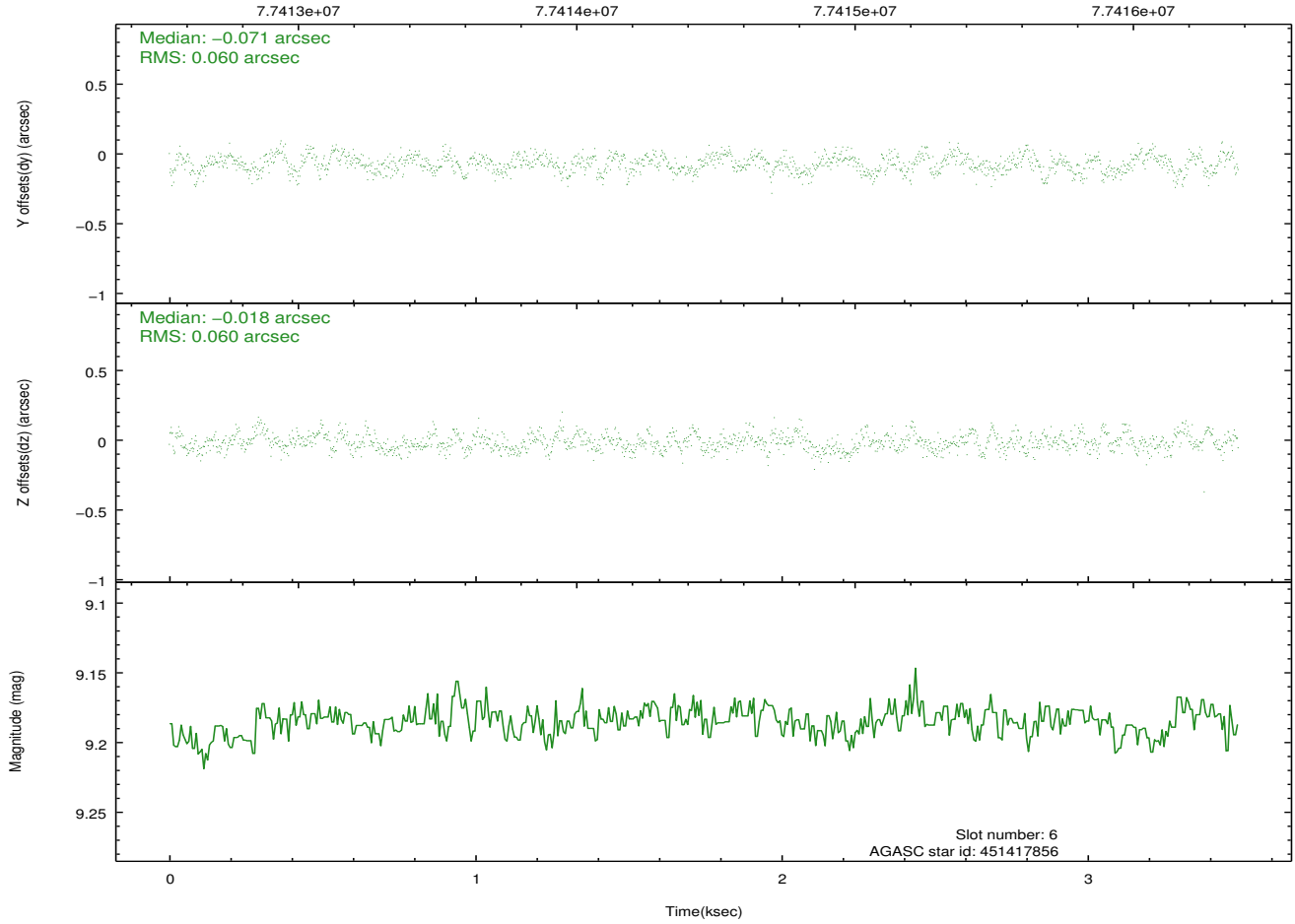
2.4.3 Slot 5



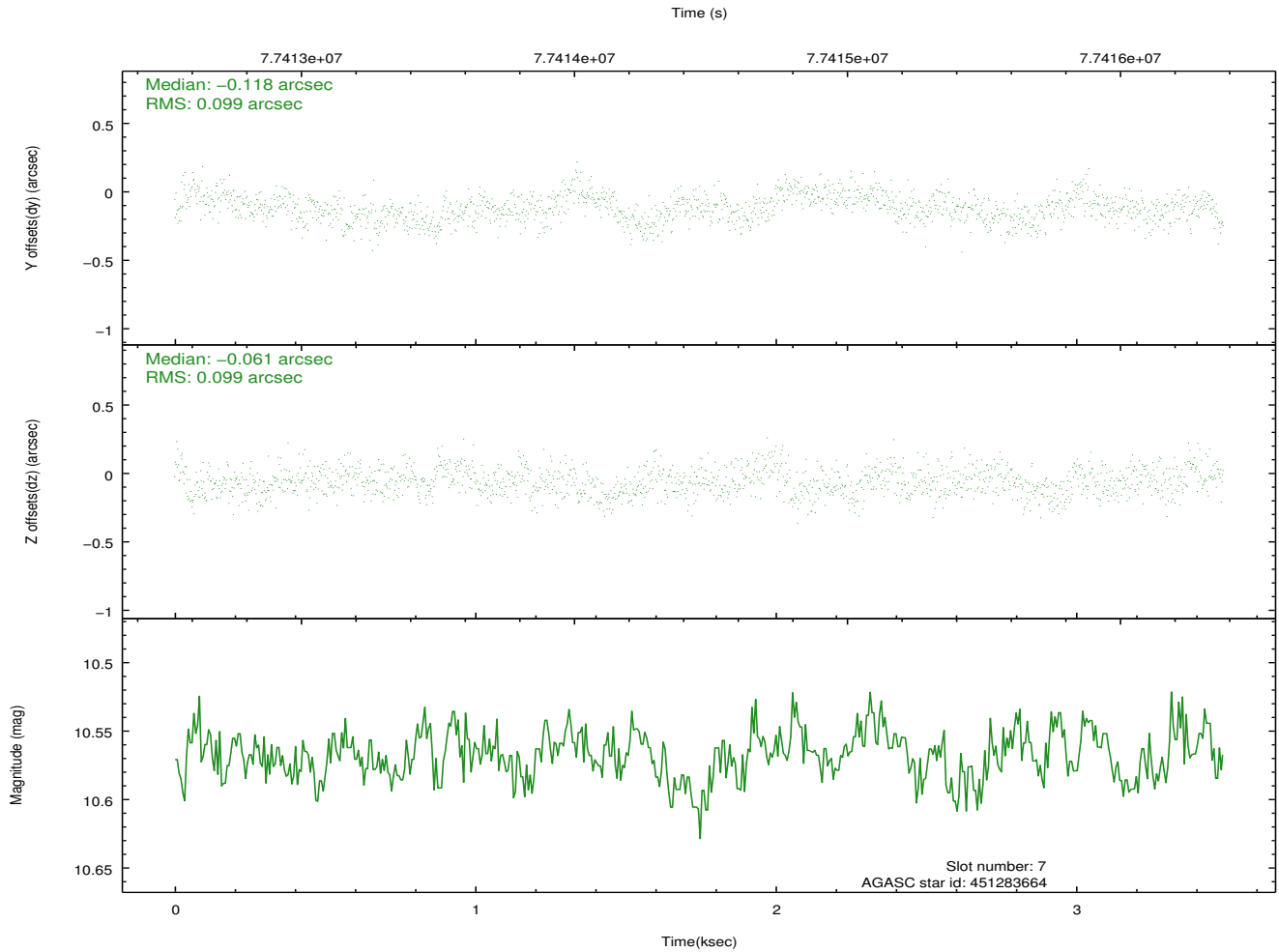
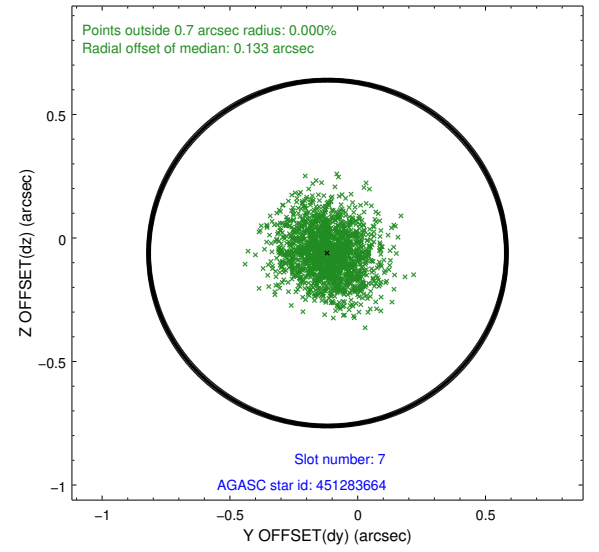
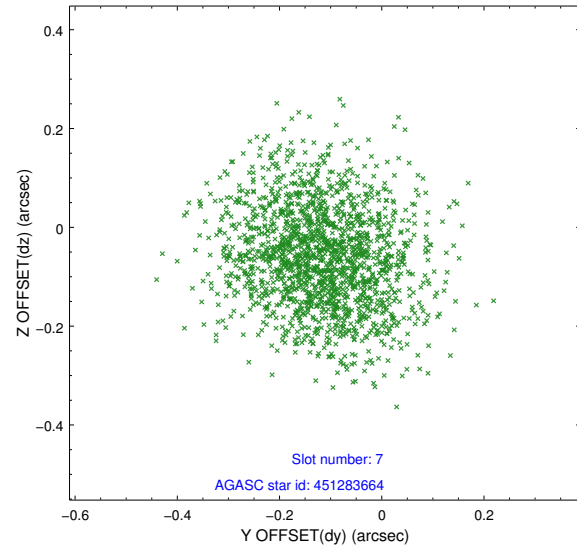
2.4.4 Slot 6



Time (s)

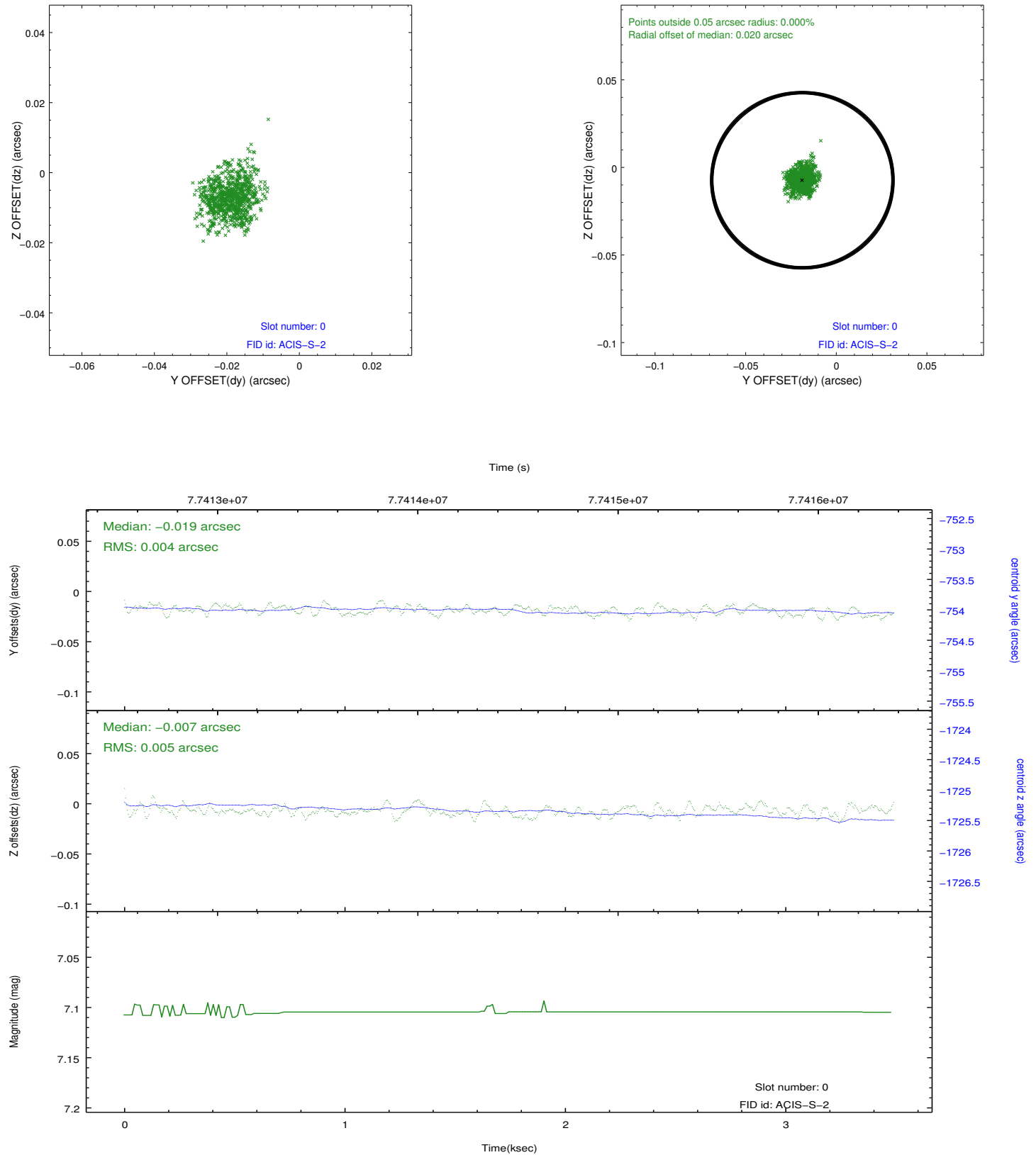


2.4.5 Slot 7

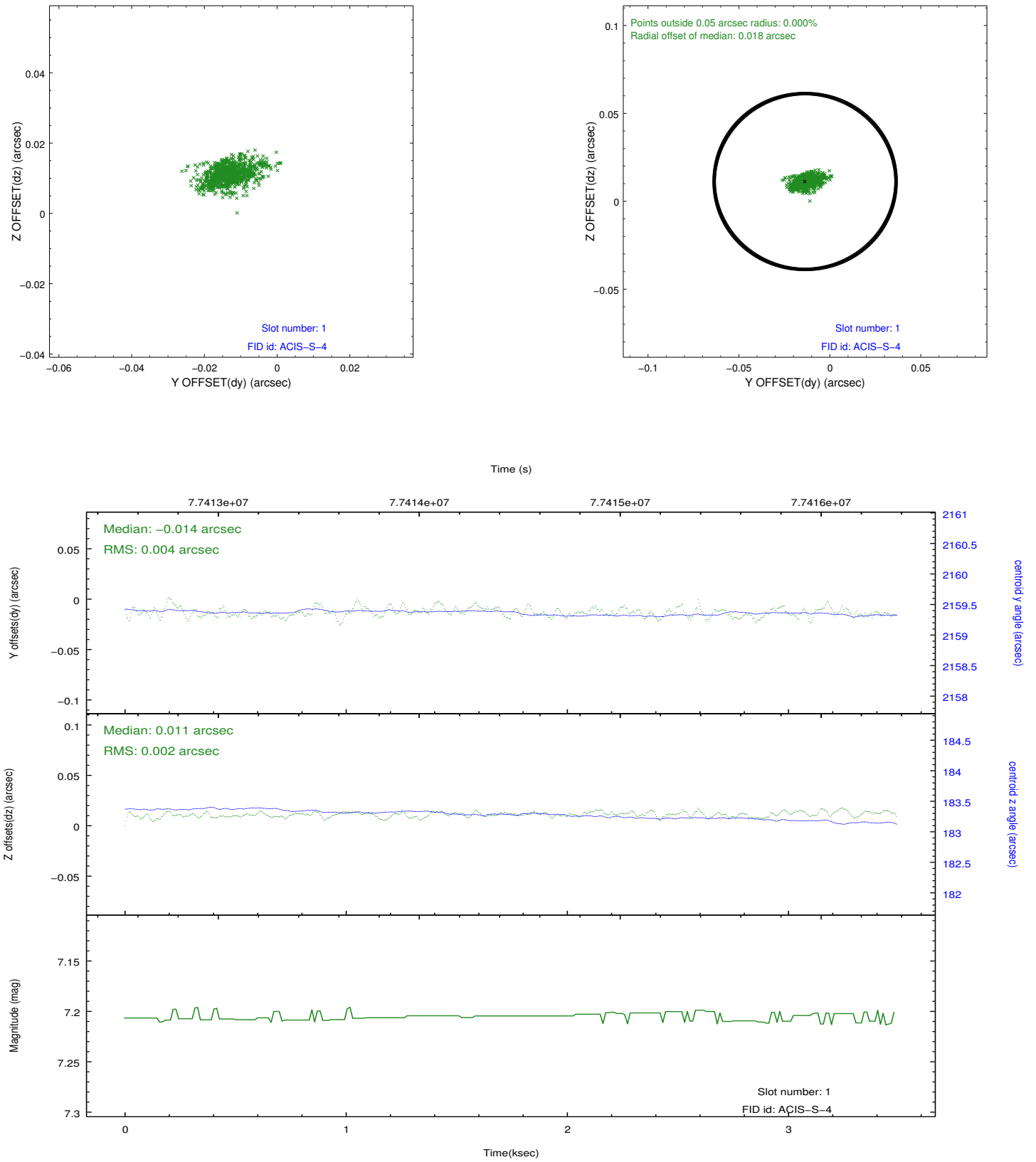


2.5 FID Slots

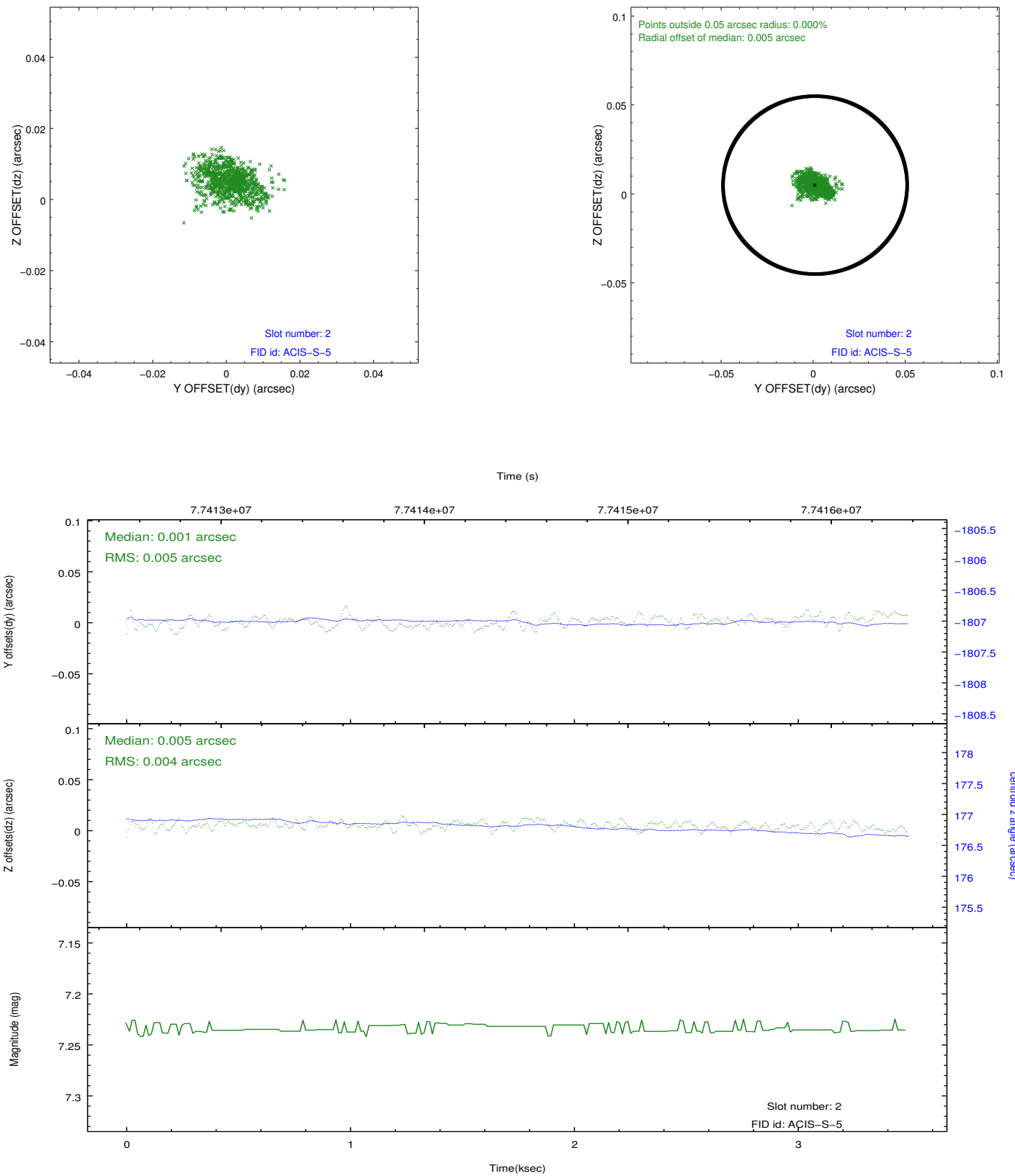
2.5.1 Slot 0



2.5.2 Slot 1



2.5.3 Slot 2



A Summary

A.1 Status

V&V Scientist	Jen Lauer
V&V Date (YYYY-MM-DD)	2012.08.31
V&V Edition	1
V&V Disposition and Status	OK
V&V Charge Time	2.915

A.2 Comments

Charge time for this ObsId remains at previous value of 2.915 ks although with the current processing the charge time would have been 2.912 ksec.