

# V&V Reference Report

## L2 ASCDS Version : 8.4.5

Observation 848 - L2 Version 6  
Chandra X-Ray Center

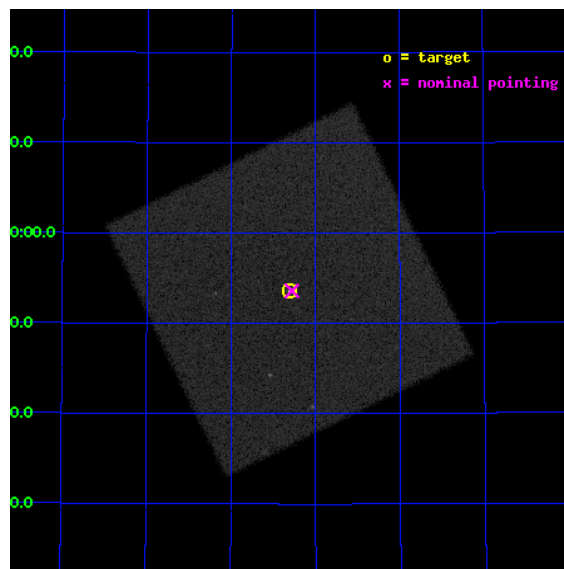
L2 Processing Date : Aug 24 2012

## Contents

<b>1</b>	<b>Front</b>	<b>2</b>
<b>2</b>	<b>OBI</b>	<b>3</b>
2.1	OBI . . . . .	3
2.1.1	Images . . . . .	3
2.1.2	Parameters . . . . .	4
2.1.3	Events . . . . .	4
2.2	Compared Parameters . . . . .	5
2.3	Aspect . . . . .	6
2.4	Star Slots . . . . .	9
2.4.1	Slot 3 . . . . .	9
2.4.2	Slot 4 . . . . .	10
2.4.3	Slot 5 . . . . .	11
2.4.4	Slot 6 . . . . .	12
2.4.5	Slot 7 . . . . .	13
2.5	FID Slots . . . . .	14
2.5.1	Slot 0 . . . . .	14
2.5.2	Slot 1 . . . . .	15
2.5.3	Slot 2 . . . . .	16
<b>A</b>	<b>Summary</b>	<b>17</b>
A.1	Status . . . . .	17
A.2	Comments . . . . .	17

# 1 Front

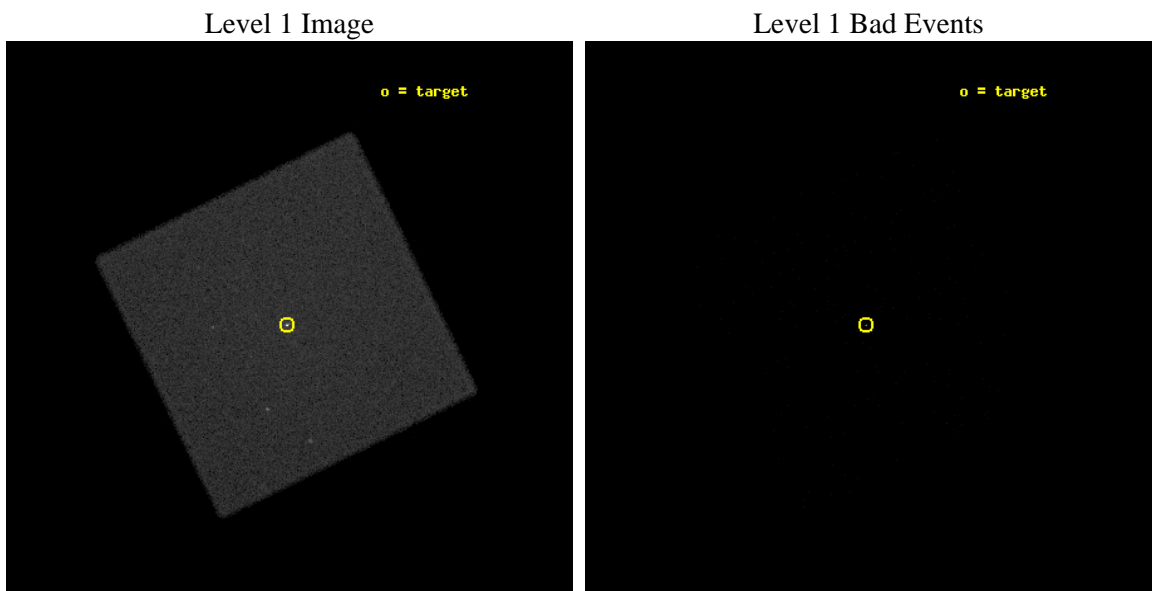
seq_num	700153	Sequence number
obs_id	848	Observation id
title	DO BL LAC OBJECTS WEAR X-RAY HALOS?	Proposal title
observer	Dr. Sally Laurent-Muehleisen	Principal investigator
object	1031+508	Source name
ra_targ	157.827083	Observer's specified target RA [deg]
dec_targ	50.893278	Observer's specified target Dec [deg]
ra_nom	157.8198602357	Nominal RA [deg]
dec_nom	50.893661361634	Nominal Dec [deg]
roll_nom	198.98518880354	Nominal Roll [deg]
revision	6	Processing version of data
ontime	9159.400334686	[s]
livetime	9108.9670550095	Ontime multiplied by DTCOR
l2events	250362	Number of level 2 events



## 2 OBI

### 2.1 OBI

#### 2.1.1 Images



### 2.1.2 Parameters

obi_num	0	Obi number	sched_exp_time	9000.000000	[s] Scheduled observation exposure time
ascdsver	8.4.5	Processing system revision	ontime	9159.400334686	[s]
caldbver	4.5.1.1	&#160	l1events	457378	Number of level 1 events
date	2012-08-24T04:56:18	Date and time of file creation			
revision	6	Processing version of data			

### 2.1.3 Events

#### Level 1 Events

	<b>segment 0</b>
level 1 events	457378
rejected events	80102
rejected %	17%

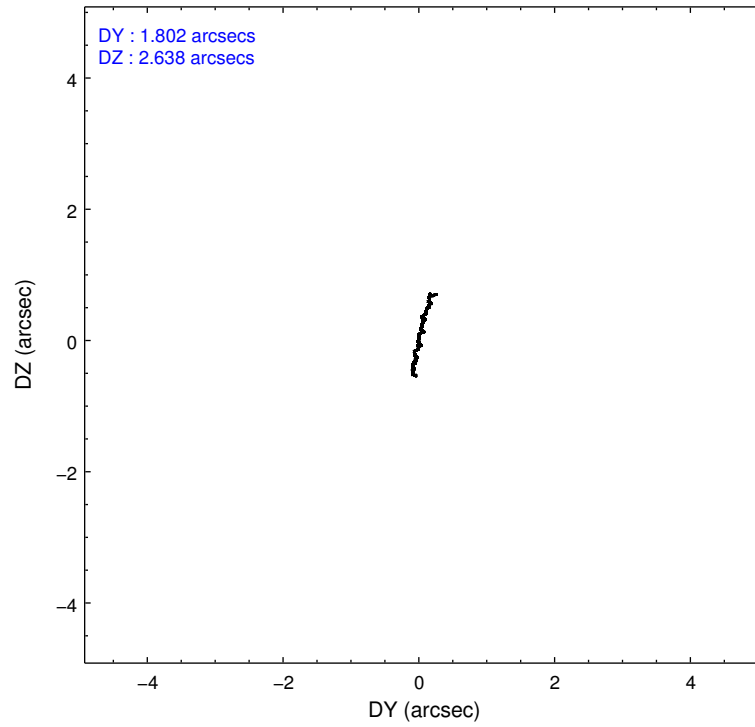
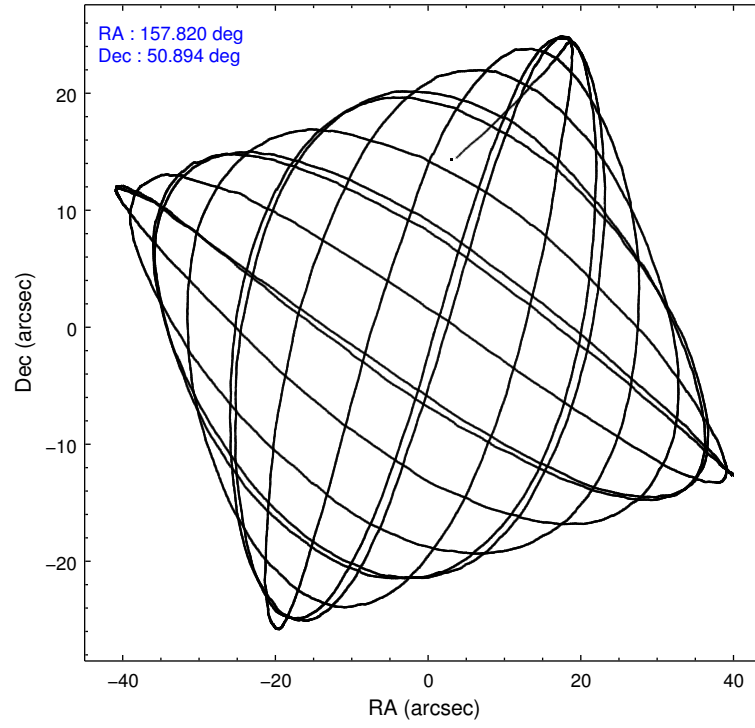


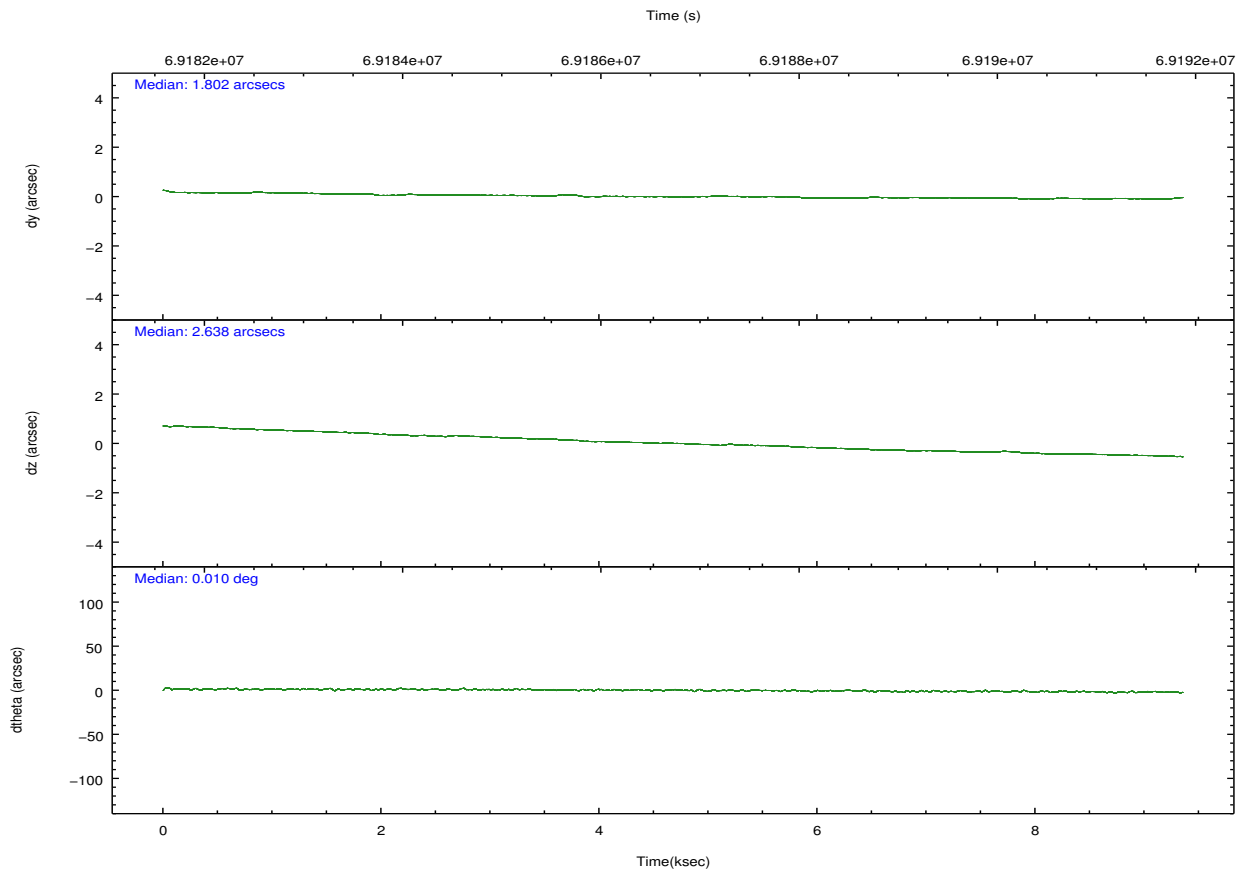
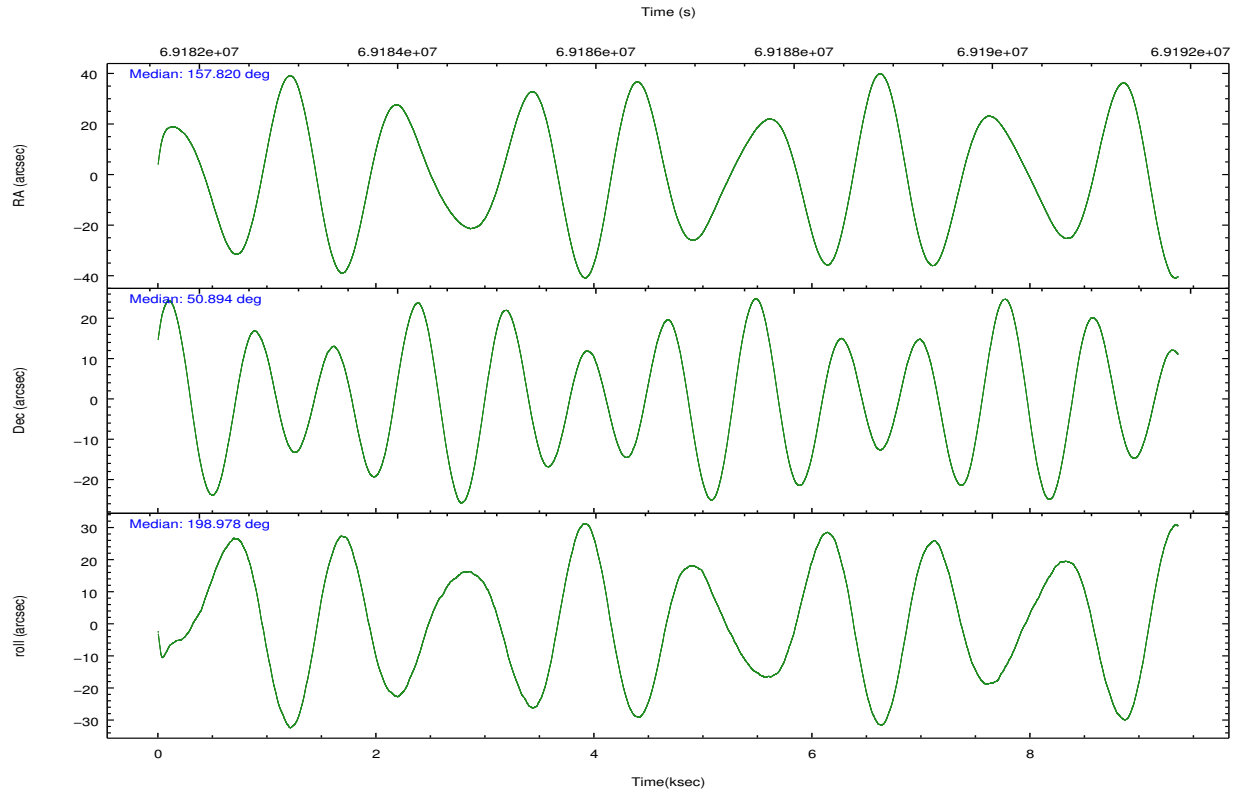
## 2.2 Compared Parameters

Parameter	Planned	Actual
Instrument	HRC	HRC
Detector	HRC-I	HRC-I
Grating	NONE	NONE
Data mode	OBSERVING	OBSERVING
Observation mode	POINTING	POINTING
[deg] Pointing RA	157.847940	157.8198602357031
[deg] Pointing Dec	50.914403	50.893661361634
[deg] Pointing Roll	199.058887	198.9851888035365
[mm] SIM focus pos	-1.040293	-1.038866356238299
[mm] SIM defocus	0	0.001426264420575141
[mm] SIM translation stage pos	126.985494	126.9829799899862
[mm] SIM translation stage offset	0	0.002508901615314585
[s] Observation start time (MET)	69182407.184000	69180160.761669
Observation start date	2000-03-11T17:19:03	2000-03-11T16:42:40
[s] Observation end time (MET)	69191407.184000	69191845.762096
Observation end date	2000-03-11T19:49:03	2000-03-11T19:57:25

Parameter	Planned	Actual
Obspar format version number	7	7
Obspar file type	PREDICTED	ACTUAL
Obspar update status	NONE	UPDATED

## 2.3 Aspect



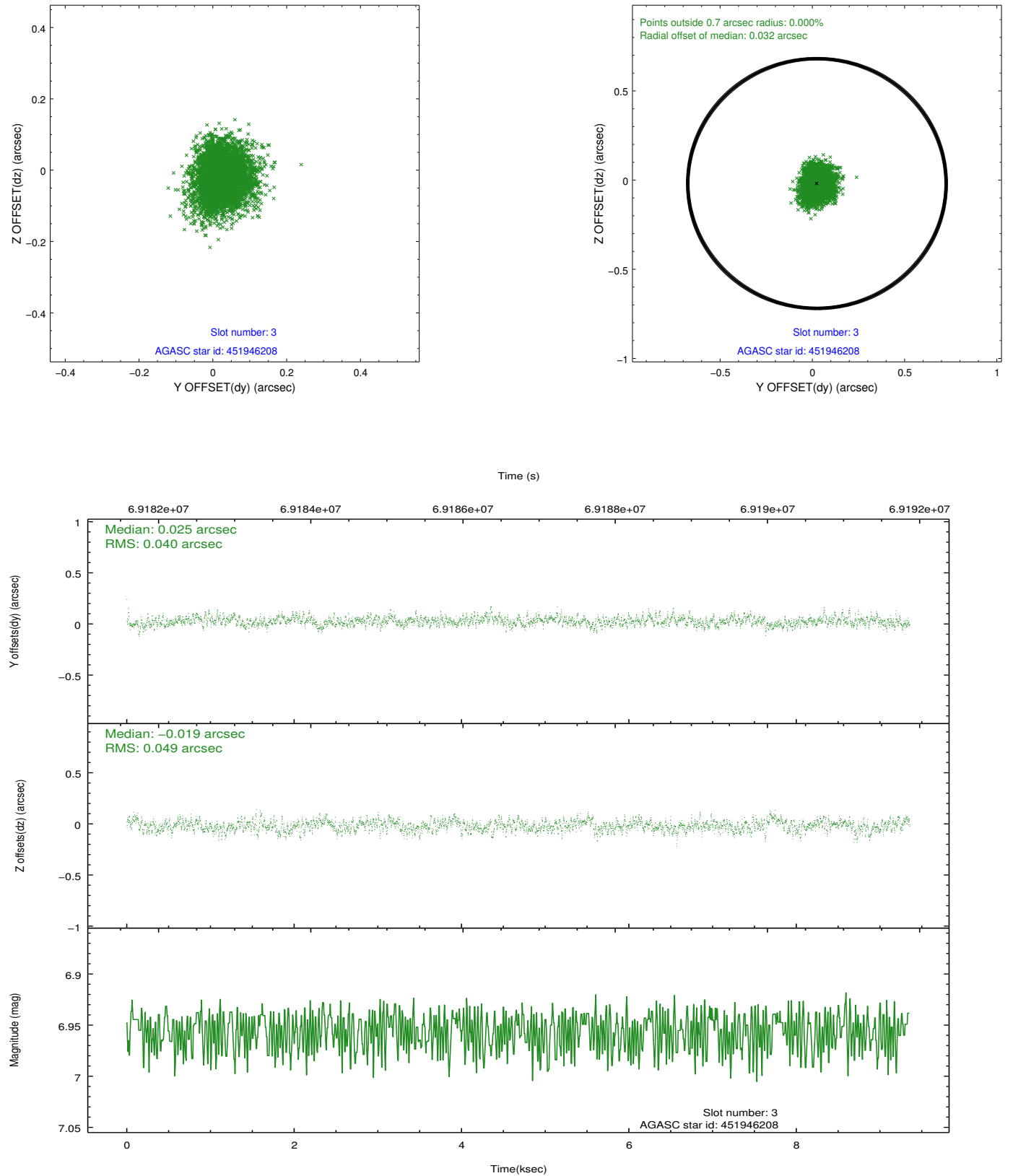


### Slot Statistics

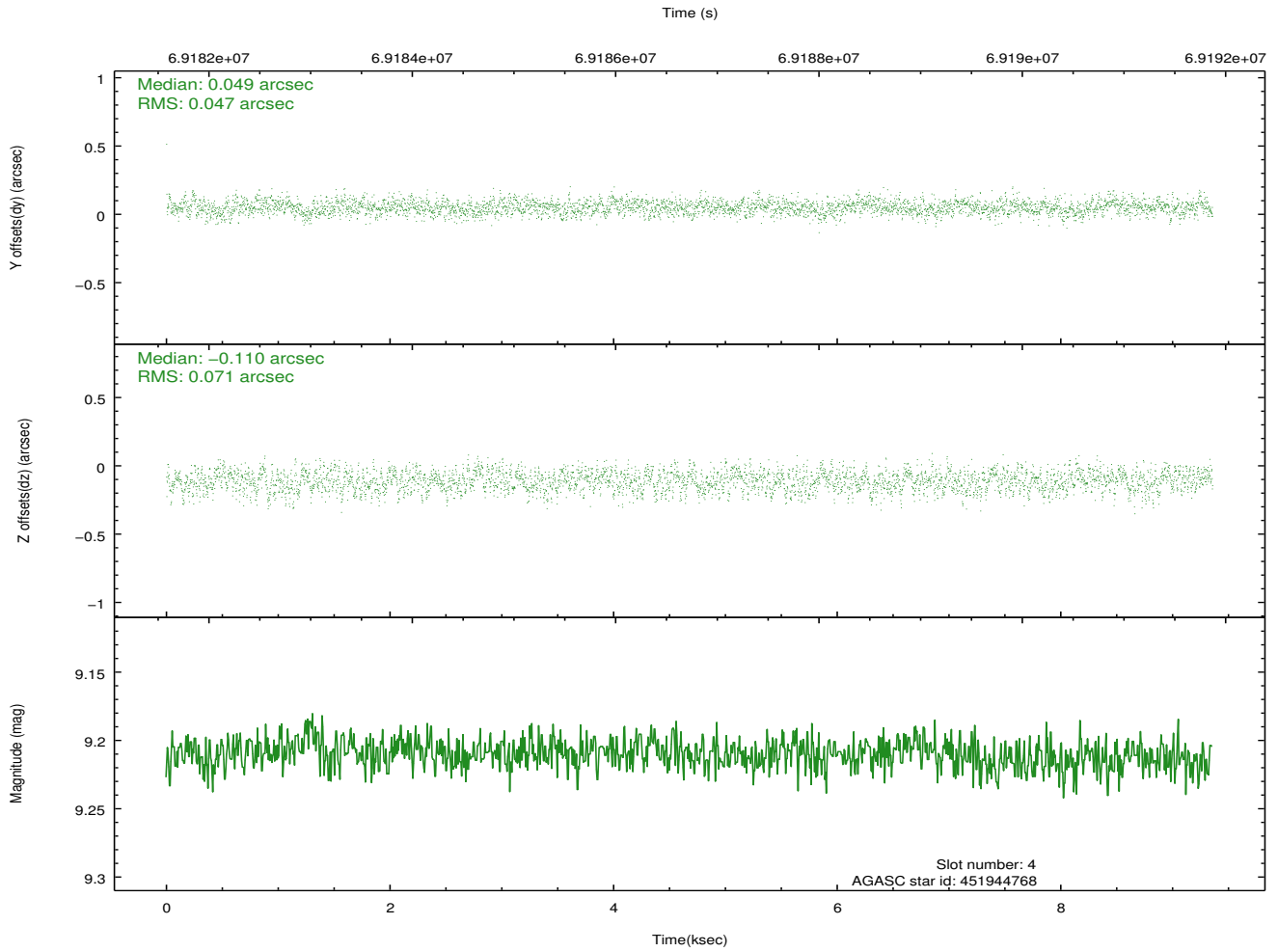
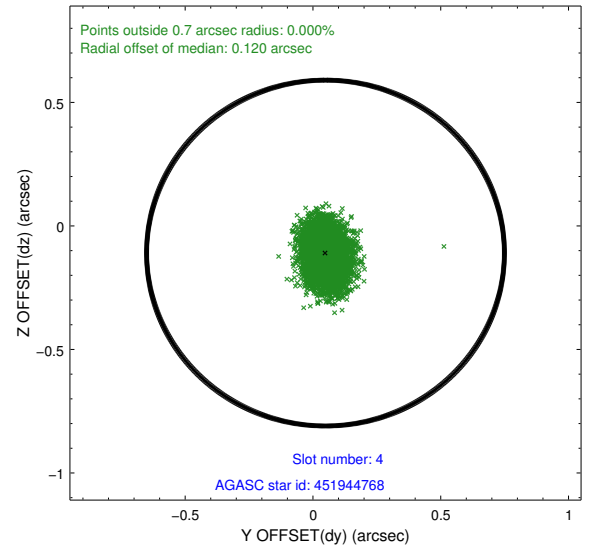
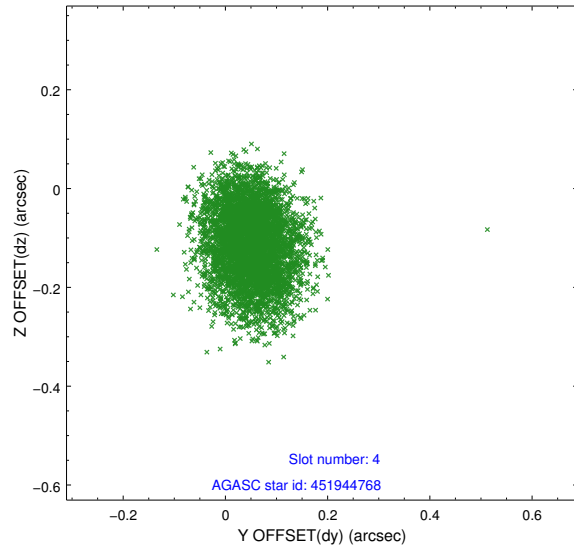
slot	status	id	mag	n_pts	med_dy	med_dz	dr1	dr2	ra	dec	mean_y	mean_z
0	FID	HRC-I-1	6.96	2282	0.044	-0.005	0.017	0.024	0.000000	0.000000	-757.25	-1290.37
1	FID	HRC-I-2	7.00	2282	0.056	-0.049	0.021	0.030	0.000000	0.000000	855.06	-1292.59
2	FID	HRC-I-4	6.99	2282	0.016	-0.039	0.012	0.017	0.000000	0.000000	1285.94	1011.14
3	GUIDE	451946208	6.96	4565	0.025	-0.019	0.066	0.111	157.563600	50.569125	1021.08	962.07
4	GUIDE	451944768	9.21	4564	0.049	-0.110	0.090	0.147	157.673498	51.401166	-200.41	-1784.00
5	GUIDE	451944336	9.53	4562	-0.025	0.038	0.088	0.147	158.260486	51.372141	-1414.03	-1257.20
6	GUIDE	451945136	9.52	4559	-0.049	0.039	0.106	0.167	158.516289	50.376377	-819.61	2325.46
7	GUIDE	451944368	9.65	4564	-0.004	0.057	0.101	0.162	158.476406	50.750715	-1161.68	1019.65

## 2.4 Star Slots

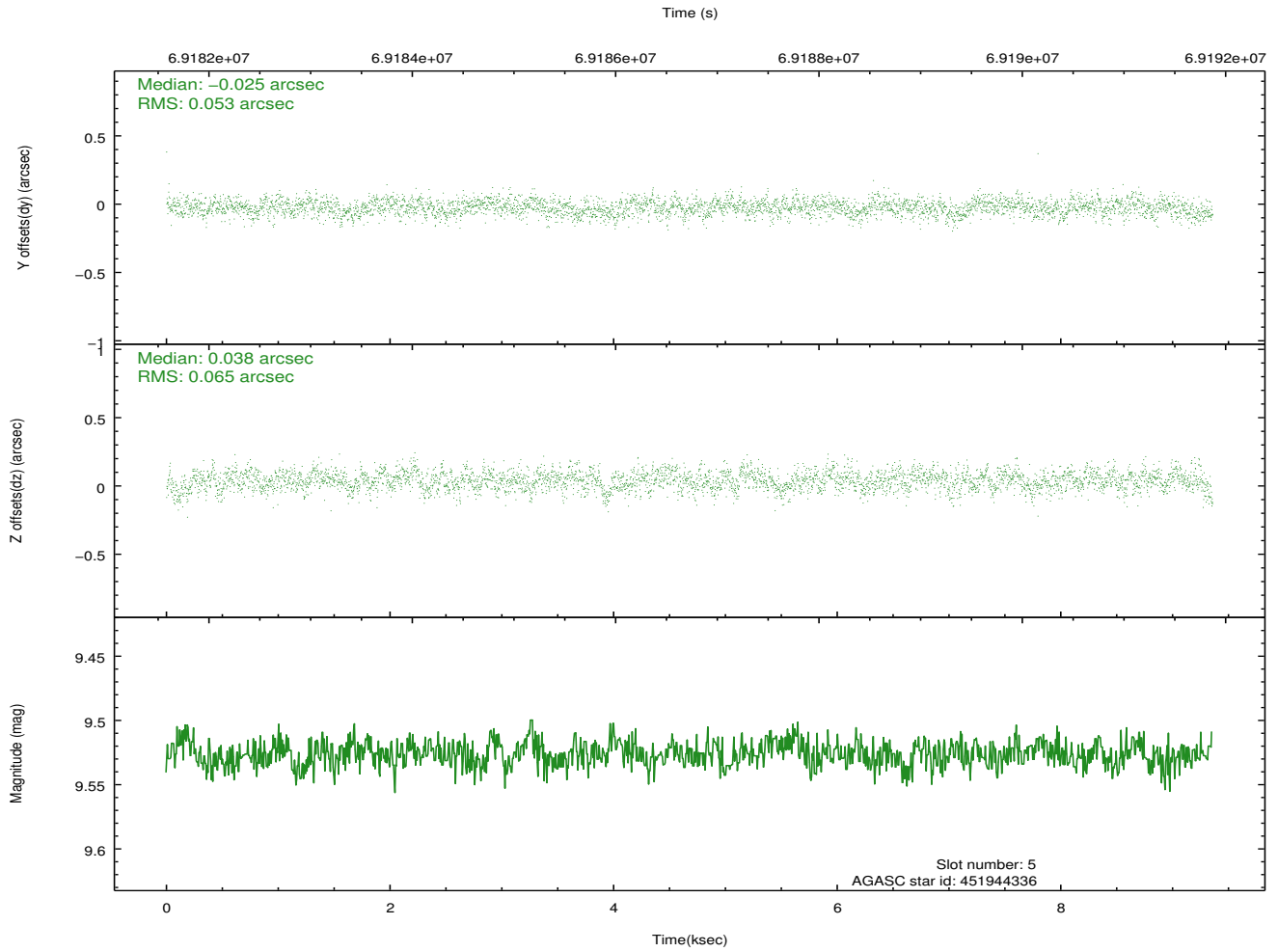
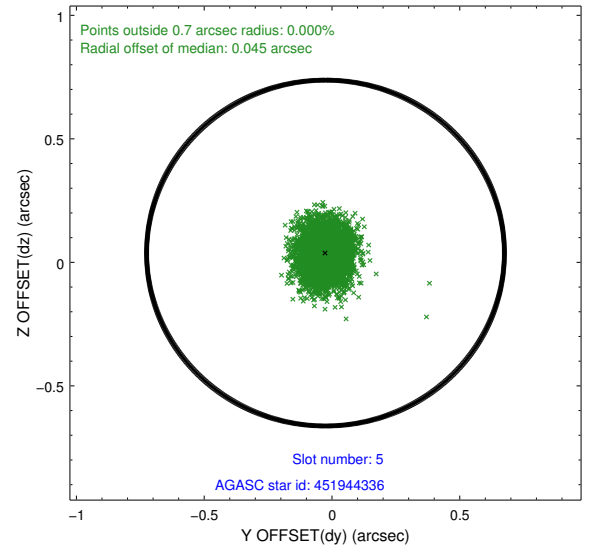
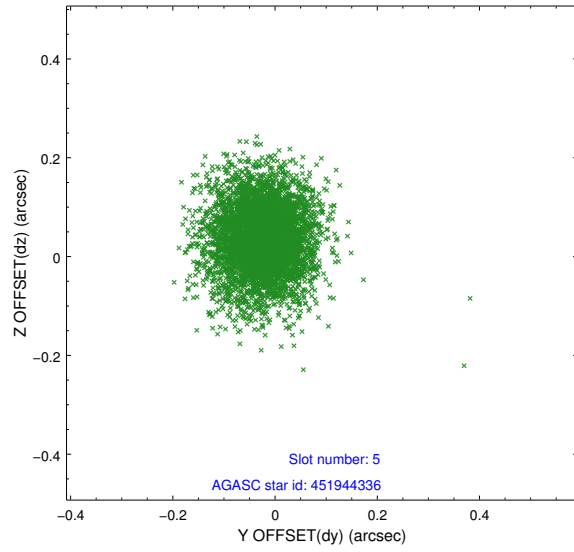
### 2.4.1 Slot 3



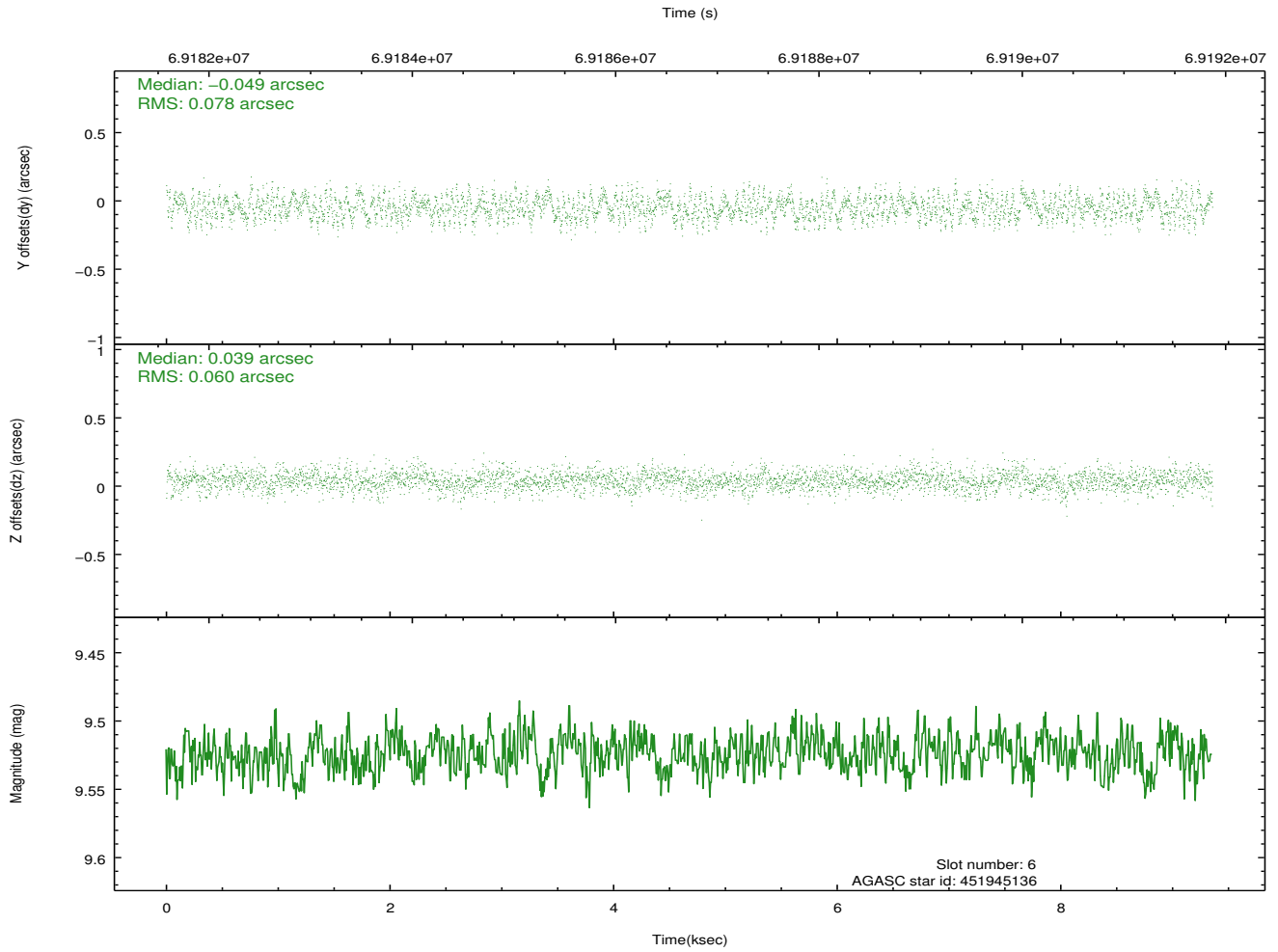
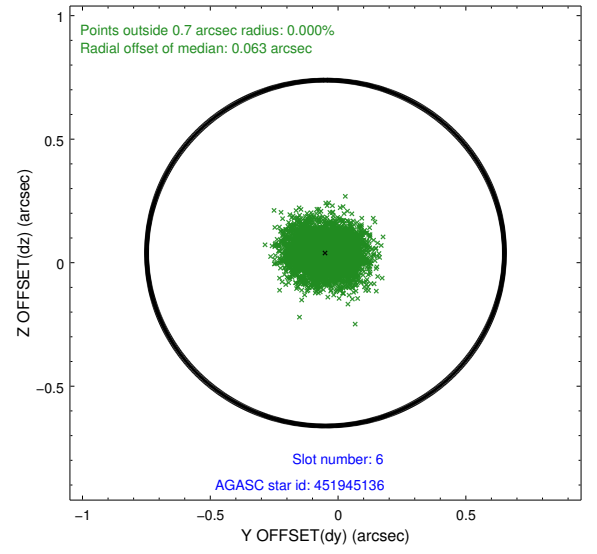
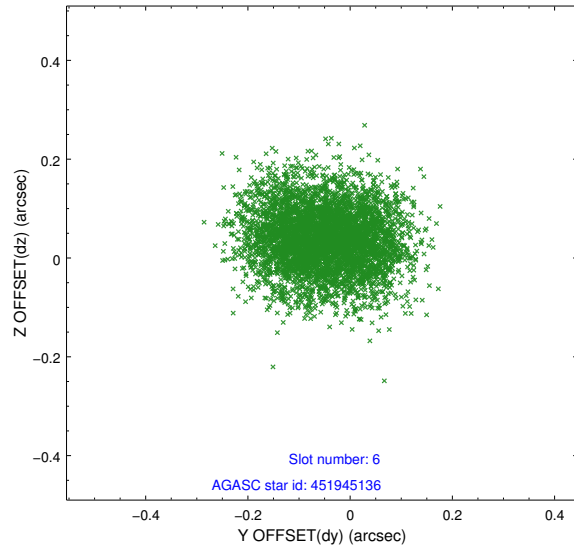
## 2.4.2 Slot 4



### 2.4.3 Slot 5

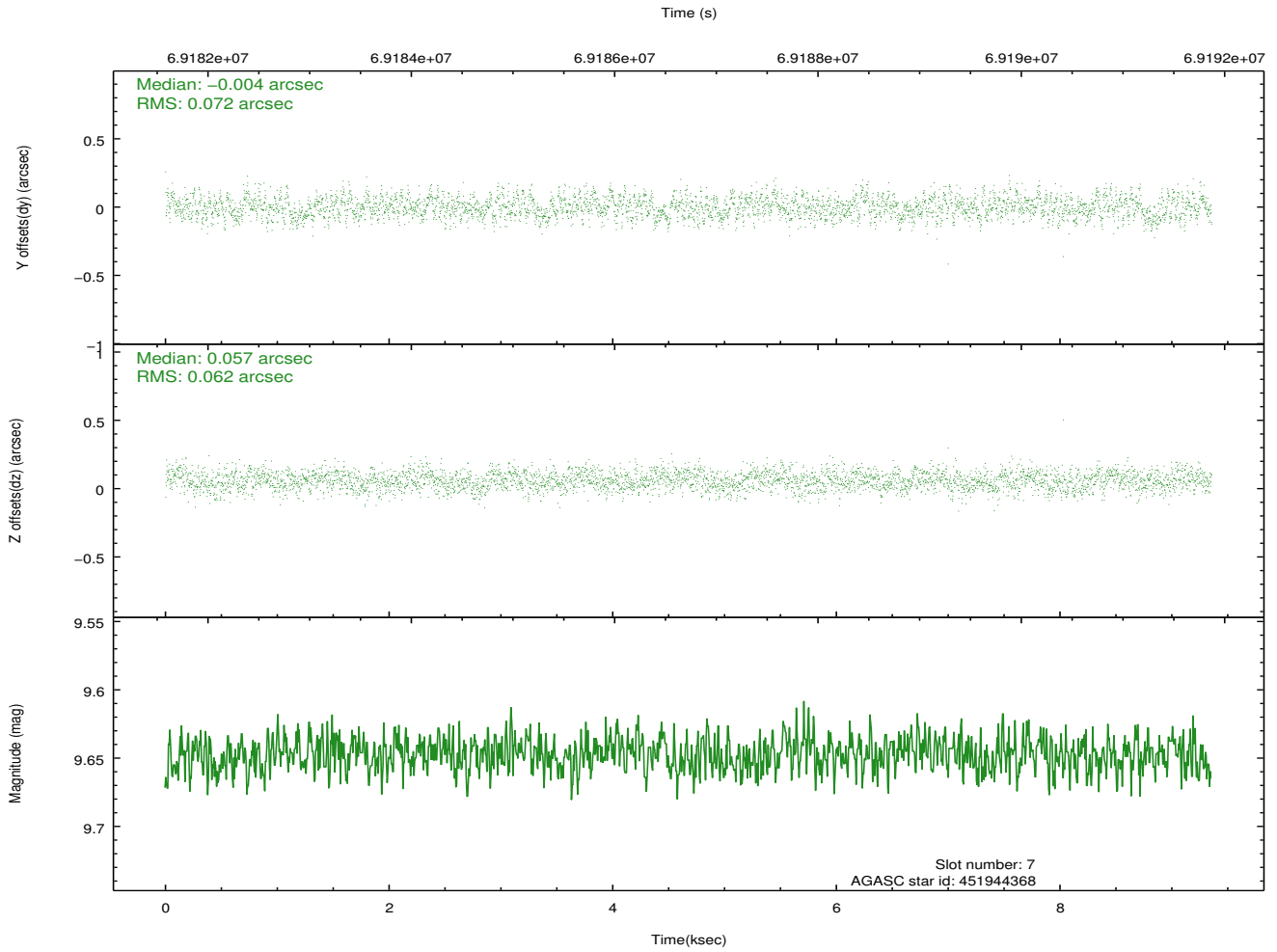
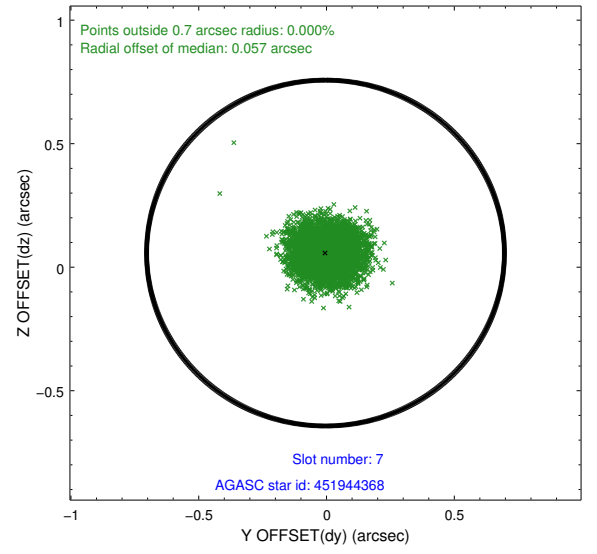
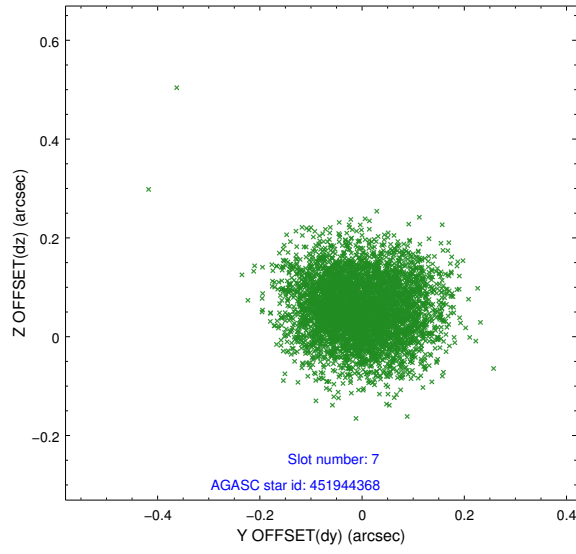


## 2.4.4 Slot 6



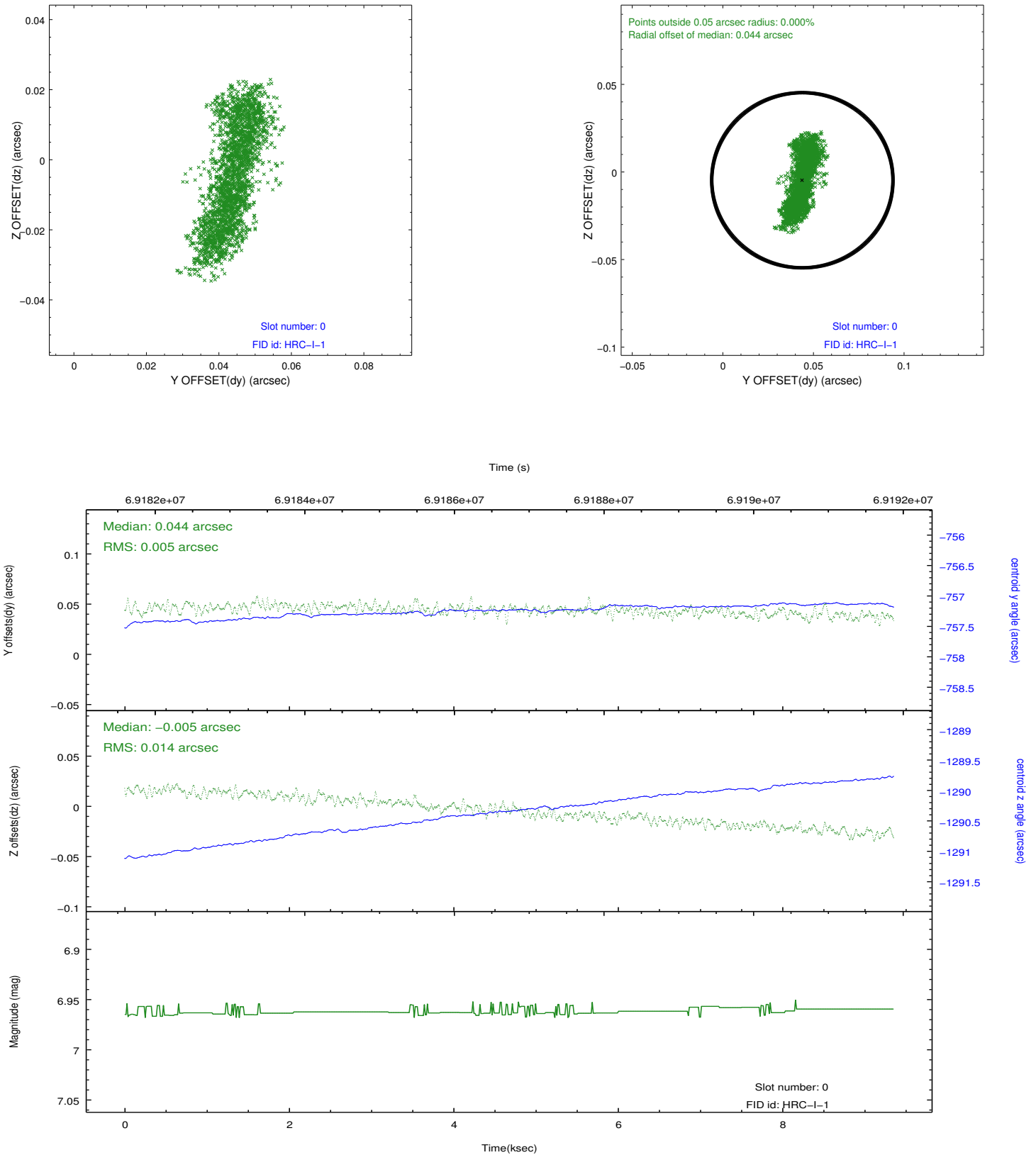


## 2.4.5 Slot 7

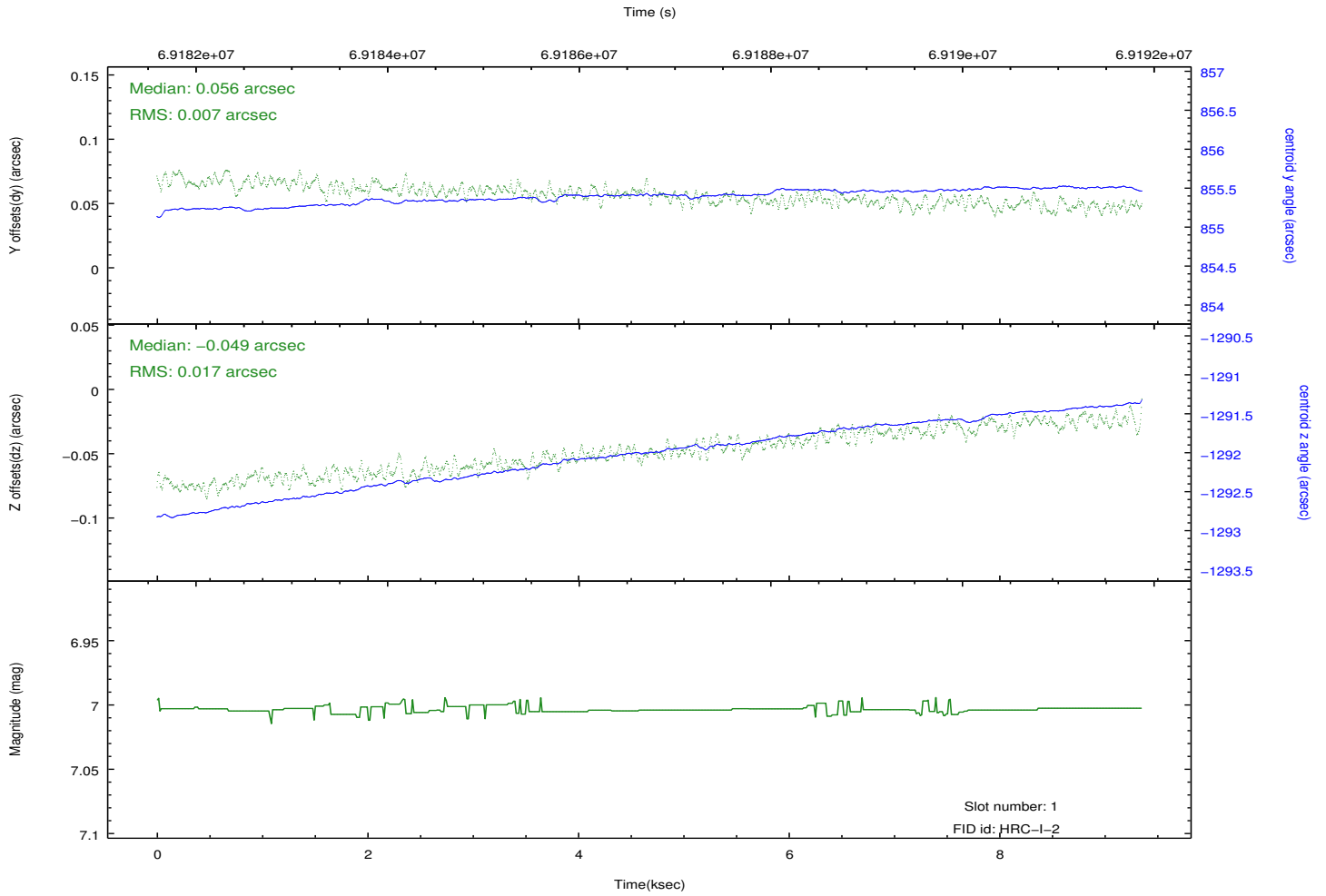
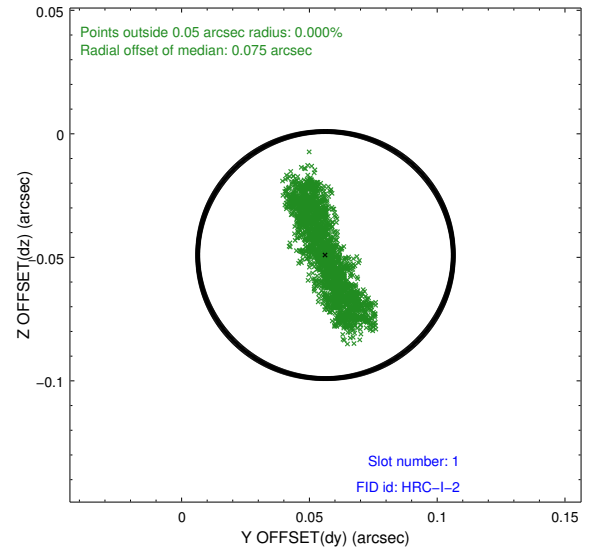
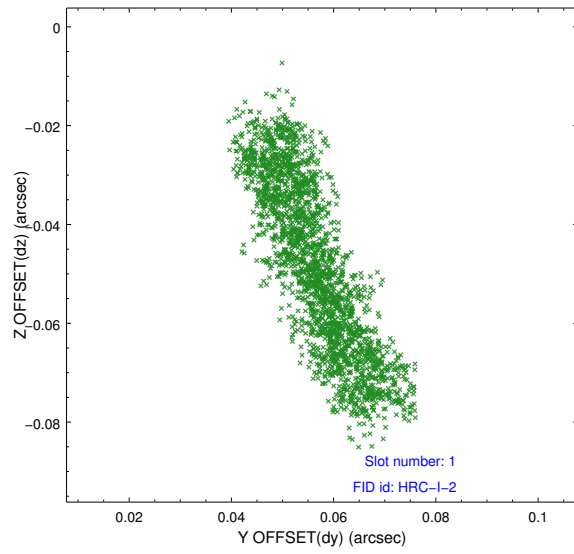


## 2.5 FID Slots

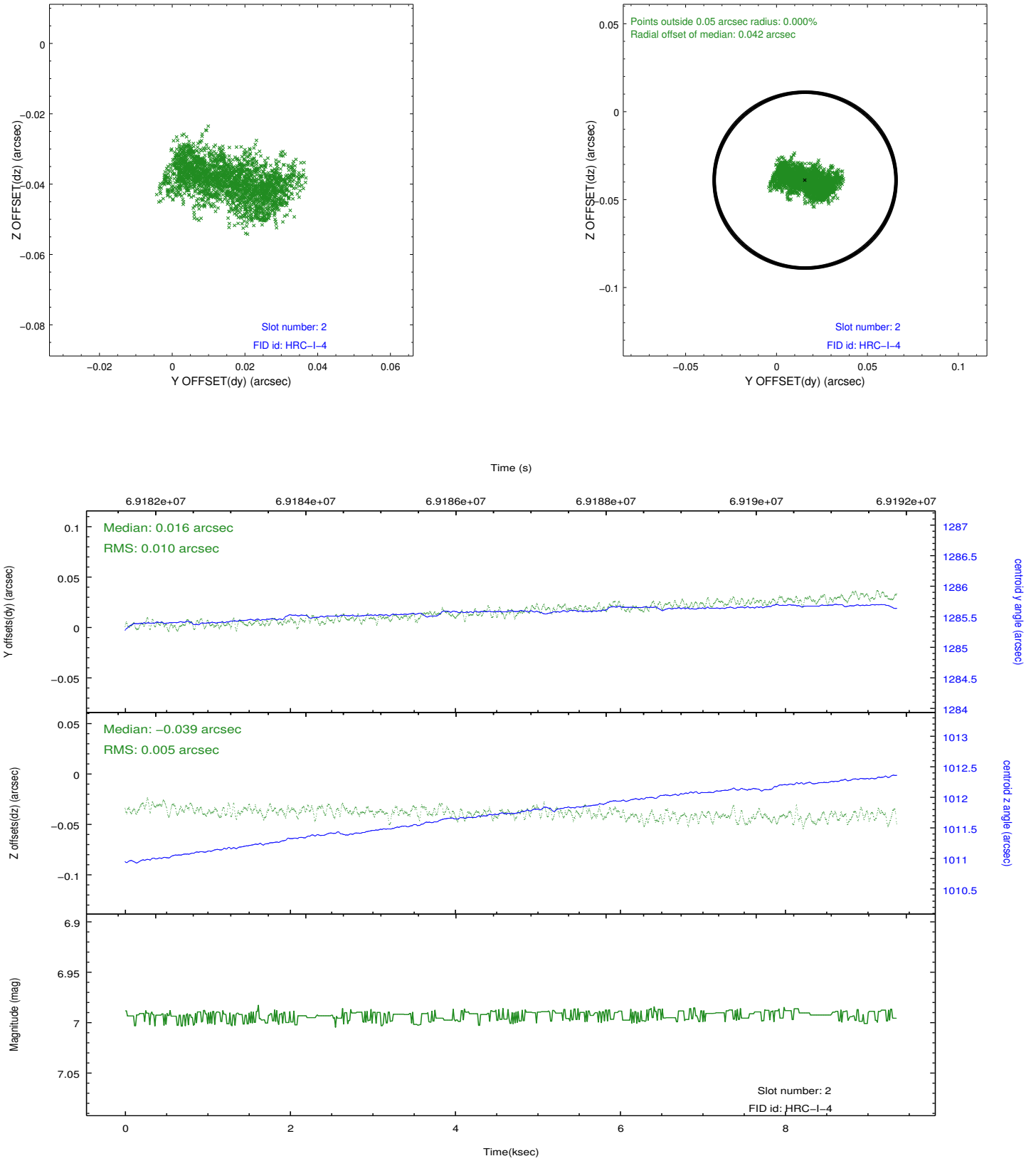
### 2.5.1 Slot 0



## 2.5.2 Slot 1



### 2.5.3 Slot 2



## A Summary

### A.1 Status

V&V Scientist	Jen Lauer
V&V Date (YYYY-MM-DD)	2012.08.24
V&V Edition	1
V&V Disposition and Status	OK
V&V Charge Time	9.157

### A.2 Comments