

V&V Reference Report

L2 ASCDS Version : 8.4.4

Observation 8188 - L2 Version 3
Chandra X-Ray Center

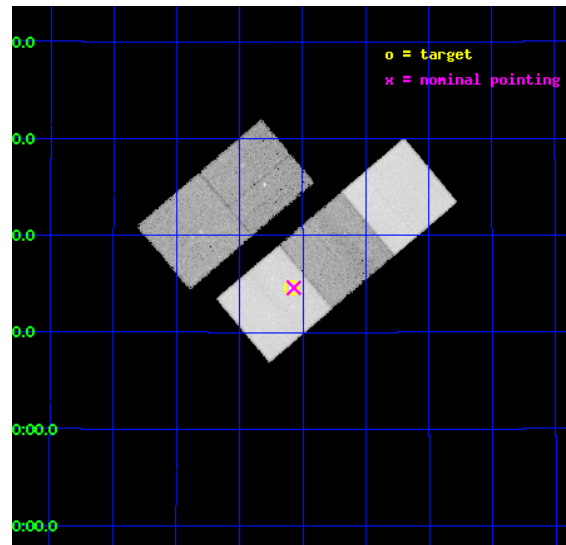
L2 Processing Date : Apr 21 2012

Contents

1	Front	2
2	OBI	3
2.1	OBI	3
2.1.1	Images	3
2.1.2	Bias	3
2.1.3	Parameters	4
2.1.4	Events	4
2.2	Compared Parameters	5
2.3	Aspect	6
2.4	Star Slots	9
2.4.1	Slot 3	9
2.4.2	Slot 4	10
2.4.3	Slot 5	11
2.4.4	Slot 6	12
2.4.5	Slot 7	13
2.5	FID Slots	14
2.5.1	Slot 0	14
2.5.2	Slot 1	15
2.5.3	Slot 2	16
A	Summary	17
A.1	Status	17
A.2	Comments	17

1 Front

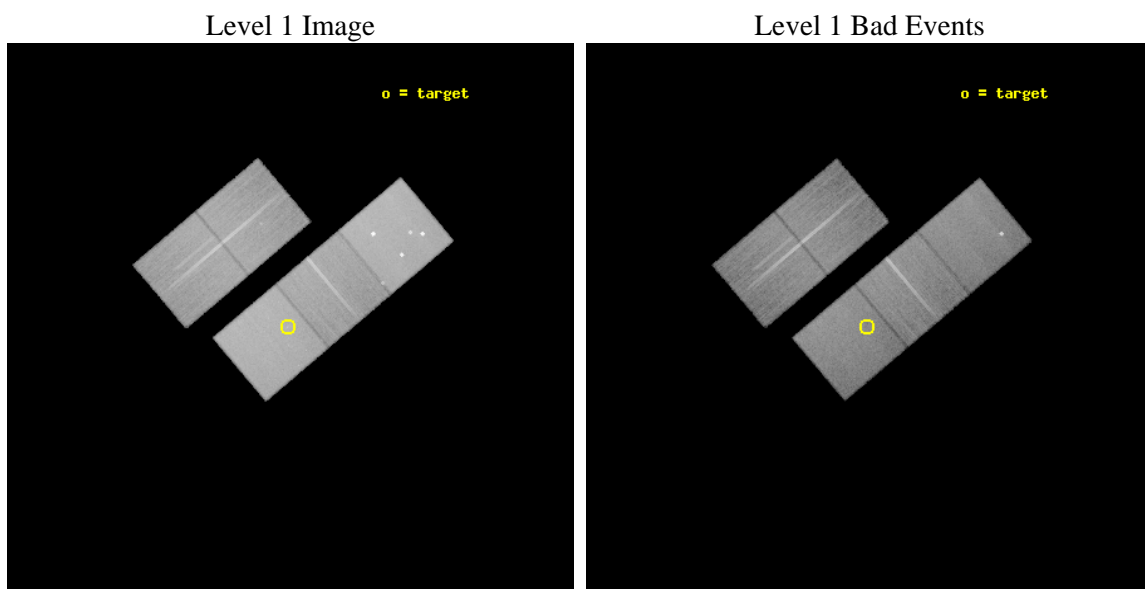
seq_num	600625	Sequence number
obs_id	8188	Observation id
title	NGC4848: Telltale of the stripping in the coma cluster	Proposal ti
observer	Dr. Peter Predehl	Principal investigator
object	NGC4848	Source name
dtcycle	0	
cycle	P	events from which exps? Prim/Second/Both
ra_targ	194.522917	Observer's specified target RA [deg]
dec_targ	28.2425	Observer's specified target Dec [deg]
ra_nom	194.51747350483	Nominal RA [deg]
dec_nom	28.24323311828	Nominal Dec [deg]
roll_nom	139.80578155805	Nominal Roll [deg]
revision	3	Processing version of data
ontime	29037.700223327	Sum of GTIs [s]
livetime	28658.301292665	Livetime [s]
ontime2	29034.559213102	Sum of GTIs [s]
ontime3	29037.700223327	Sum of GTIs [s]
ontime5	29037.700223327	Sum of GTIs [s]
ontime6	29037.700223327	Sum of GTIs [s]
ontime7	29037.700223327	Sum of GTIs [s]
l2events	434613	Number of level 2 events



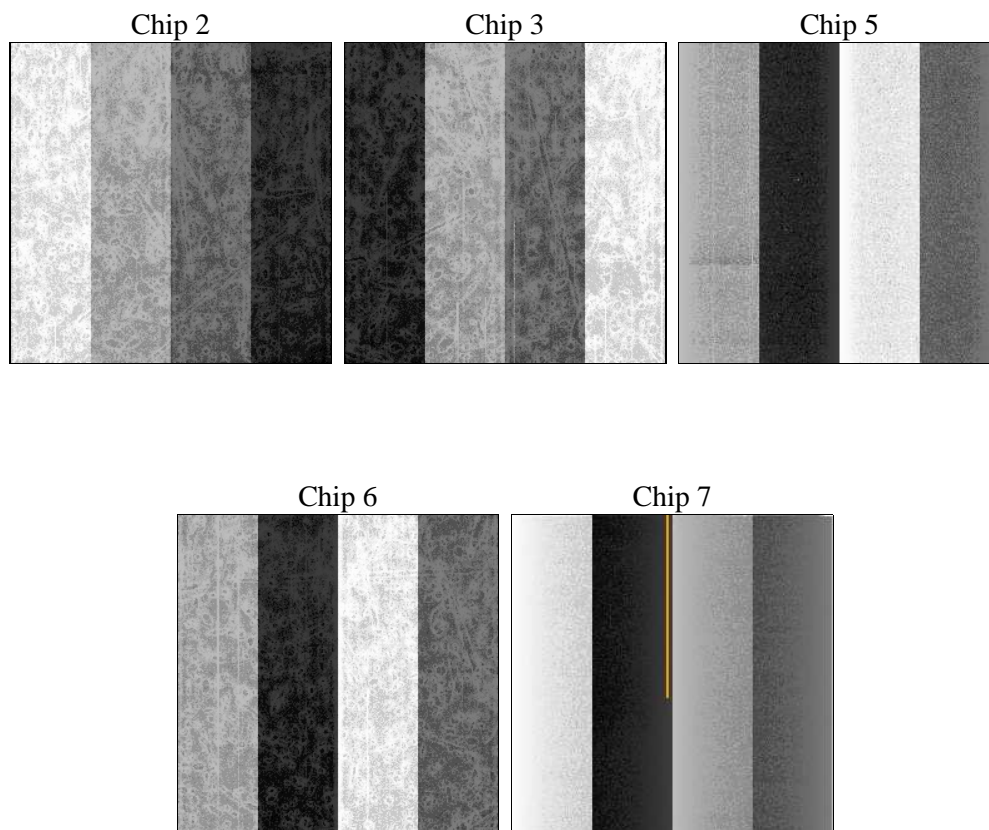
2 OBI

2.1 OBI

2.1.1 Images



2.1.2 Bias



2.1.3 Parameters

obi_num	0	Obi number	sched_exp_time	29000.000000	[s] Scheduled observation exposure time
ascdsver	8.4.4	Processing system revision	ontime	29037.700223327	Sum of GTIs [s]
caldbver	4.4.9	 	ontime2	29034.559213102	Sum of GTIs [s]
date	2012-04-21T14:41:42	Date and time of file creation	ontime3	29037.700223327	Sum of GTIs [s]
revision	3	Processing version of data	ontime5	29037.700223327	Sum of GTIs [s]
			ontime6	29037.700223327	Sum of GTIs [s]
			ontime7	29037.700223327	Sum of GTIs [s]
			l1events	1616258	Number of level 1 events

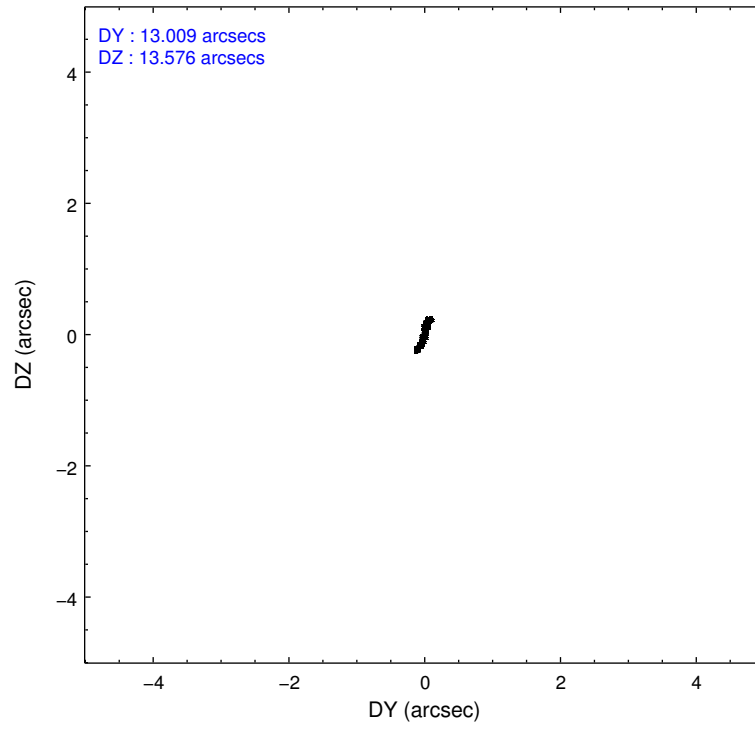
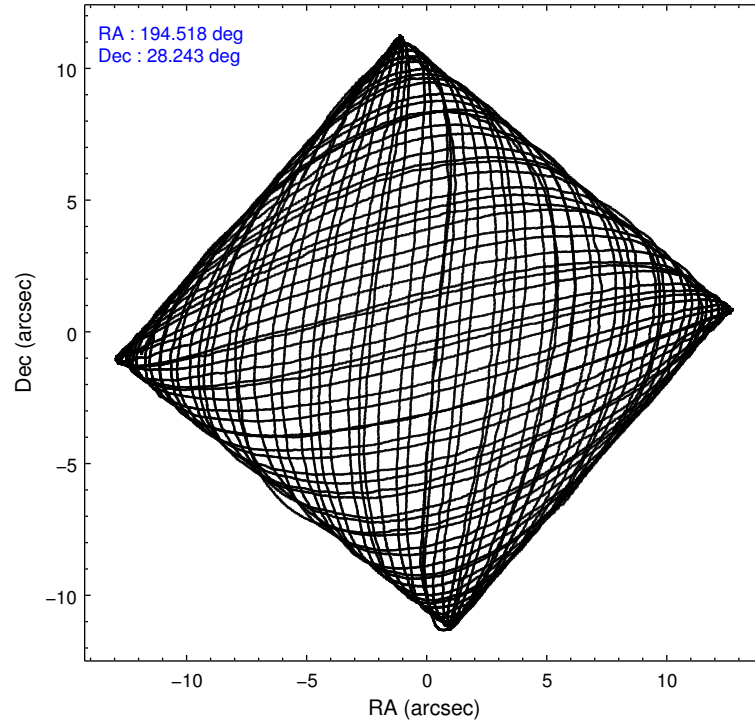
2.1.4 Events

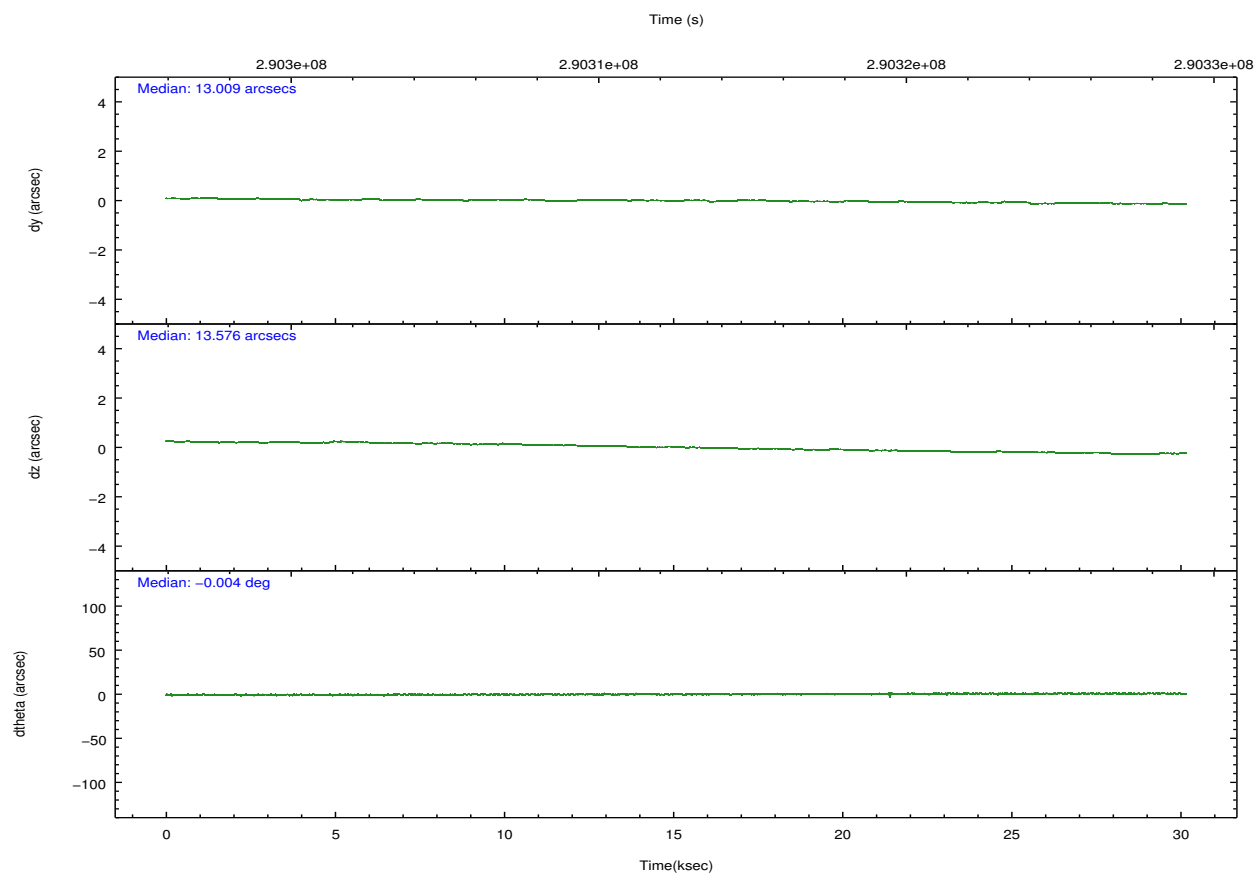
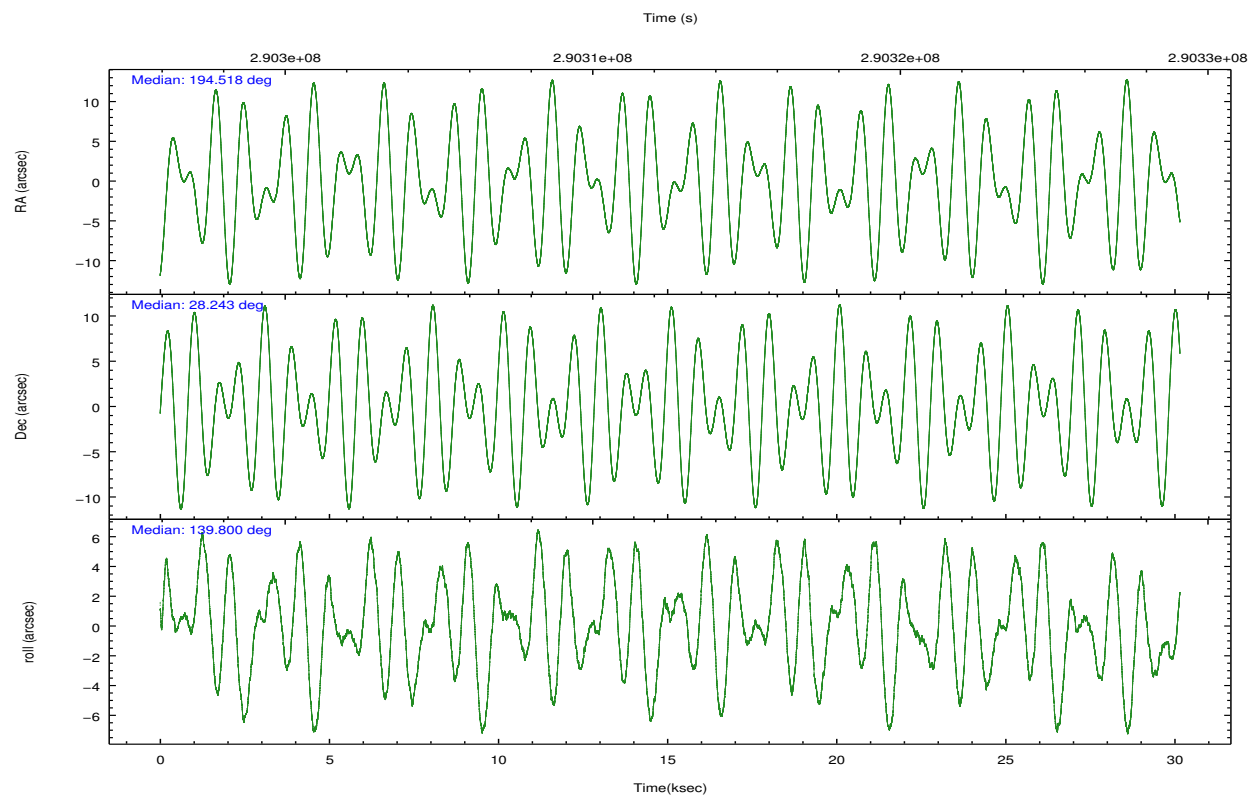
	ccd 2	ccd 3	ccd 5	ccd 6	ccd 7		ccd 2	ccd 3	ccd 5	ccd 6	ccd 7
level 1 events	262269	269312	425270	276558	382849	grade 0 events	15919	18049	28384	15303	18233
rejected events	228294	232481	223671	240725	215259		6%	6%	6%	5%	4%
rejected %	87%	86%	52%	87%	56%	grade 1 events	186	163	618	157	342
							0%	0%	0%	0%	0%
						grade 2 events	6702	6695	60962	7559	34770
							2%	2%	14%	2%	9%
						grade 3 events	3003	3262	6634	3142	14834
							1%	1%	1%	1%	3%
						grade 4 events	3022	3220	6517	3159	14557
							1%	1%	1%	1%	3%
						grade 5 events	10457	12299	28933	12637	34765
							3%	4%	6%	4%	9%
						grade 6 events	5338	5610	99122	6677	85210
							2%	2%	23%	2%	22%
						grade 7 events	217642	220014	194100	227924	180138
							82%	81%	45%	82%	47%

2.2 Compared Parameters

Parameter	Planned	Actual	Parameter	Planned	Actual
Instrument	ACIS	ACIS	Obspar format version number	7	7
Detector	ACIS-23567	ACIS-23567	Obspar file type	PREDICTED	ACTUAL
Grating	NONE	NONE	Obspar update status	NONE	UPDATED
Data mode	VFAINT	VFAINT	CCD I0 on	N	N
Observation mode	POINTING	POINTING	CCD I1 on	N	N
[deg] Pointing RA	194.548089	194.5174735048322	CCD I2 on	O3	Y
[deg] Pointing Dec	28.238739	28.24323311828	CCD I3 on	O2	Y
[deg] Pointing Roll	139.634661	139.8057815580467	CCD S0 on	N	N
[mm] SIM focus pos	-0.684267	-0.6828225247311905	CCD S1 on	O1	Y
[mm] SIM defocus	0	0.001444936568705701	CCD S2 on	O4	Y
[mm] SIM translation stage pos	-190.132523	-190.1400660498719	CCD S3 on	Y	Y
[mm] SIM translation stage offset	0	0.00754346686406393	CCD S4 on	N	N
[s] Observation start time (MET)	290298587.184000	290297119.01664	CCD S5 on	N	N
Observation start date	2007-03-14T22:28:42	2007-03-14T22:05:19	Number of optional ACIS chips dropped	0	0
[s] Observation end time (MET)	290327587.184000	290328261.08062	On-chip summing requested	N	N
Observation end date	2007-03-15T06:32:02	2007-03-15T06:44:21	Subarray requested	NONE	NONE
Read mode	TIMED	TIMED	Alternating exposures requested	N	N
			[s] Primary exposure time	0.000000	3.1

2.3 Aspect



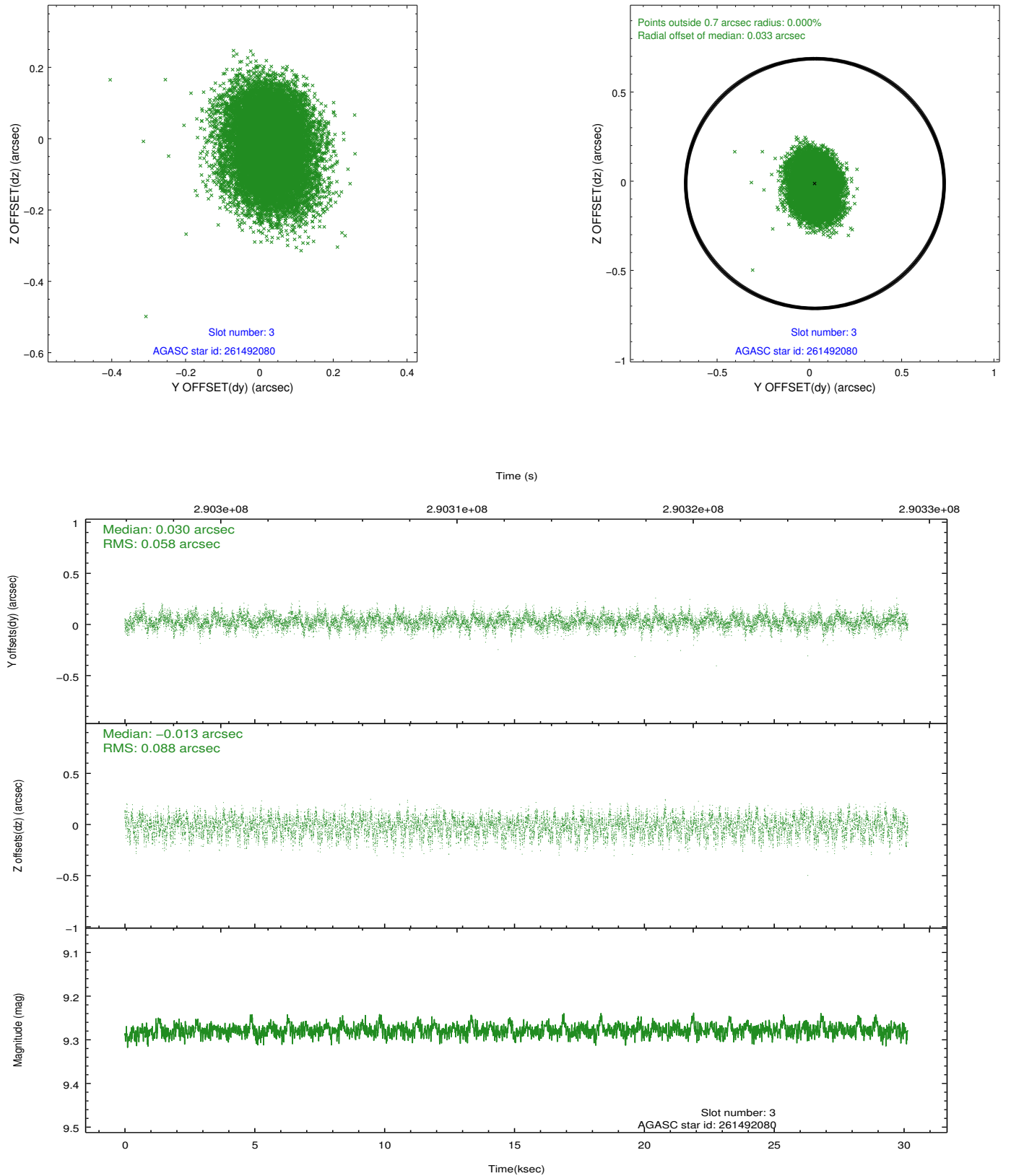


Slot Statistics

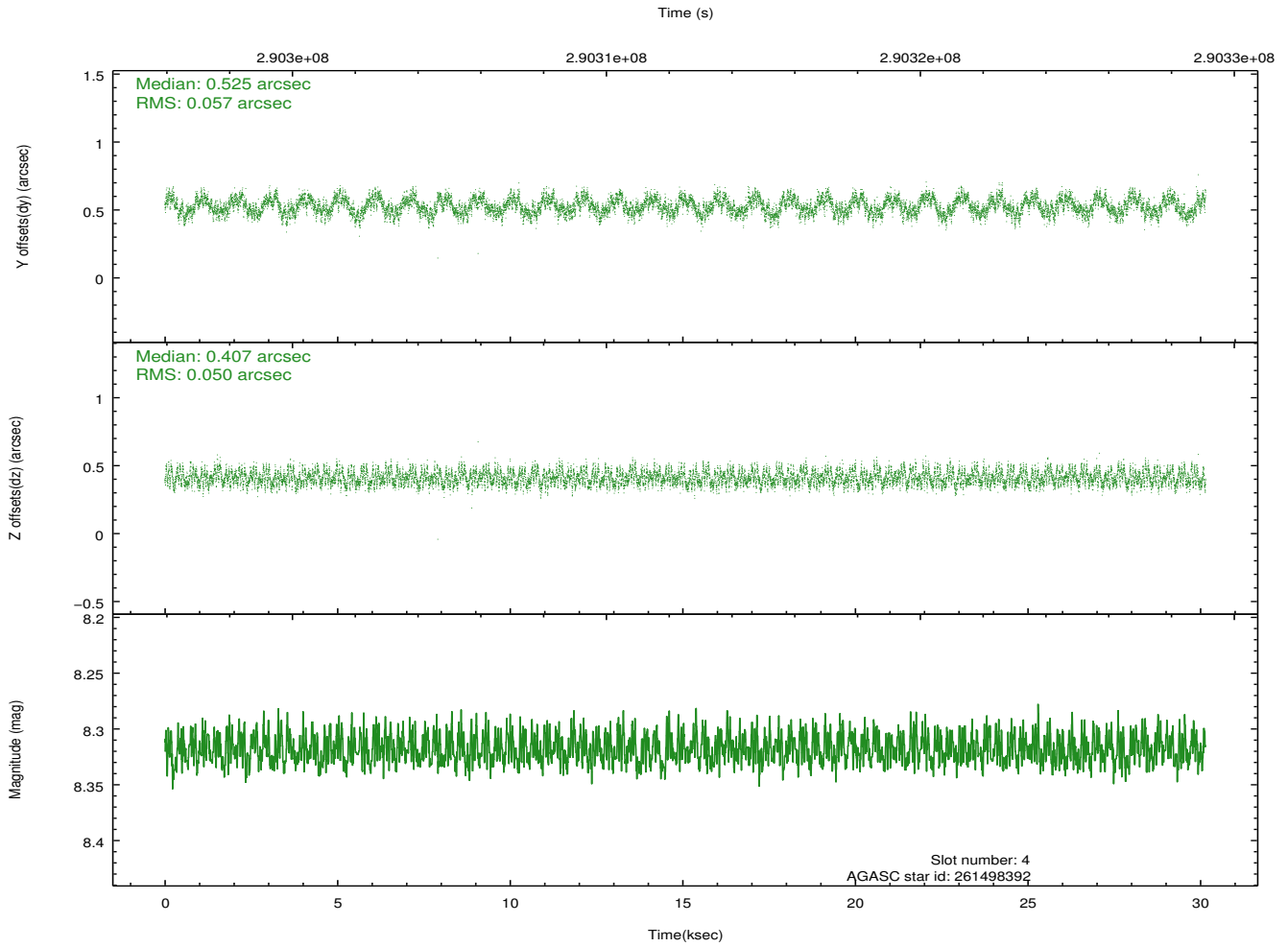
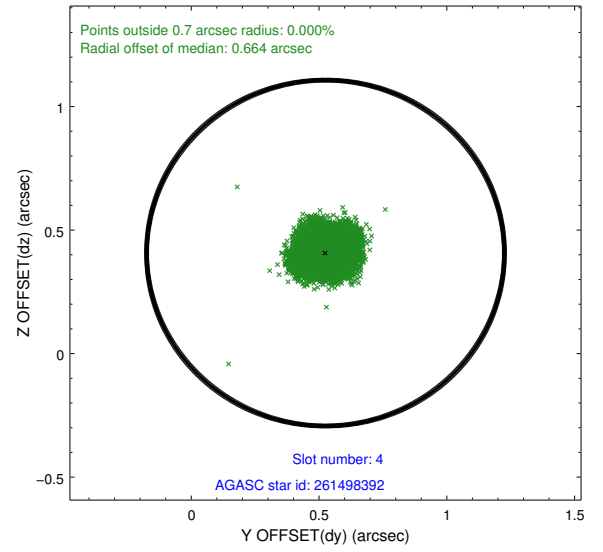
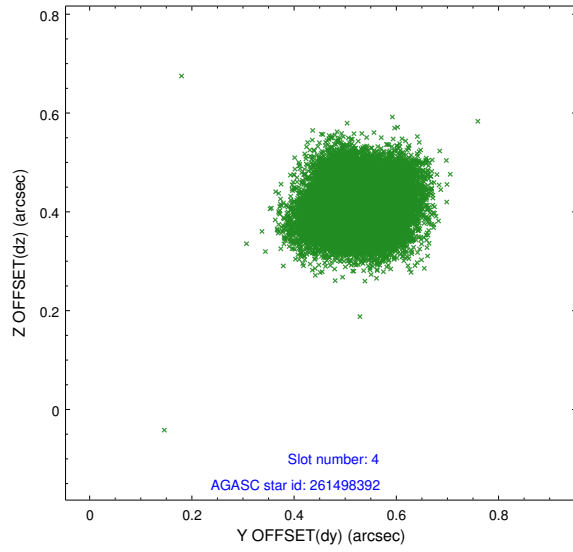
slot	status	id	mag	n_pts	med_dy	med_dz	dr1	dr2	ra	dec	mean_y	mean_z
0	FID	ACIS-S-2	7.09	7355	-0.028	-0.060	0.008	0.013	0.000000	0.000000	-765.94	-1734.98
1	FID	ACIS-S-4	7.20	7355	0.160	0.030	0.008	0.015	0.000000	0.000000	2147.49	173.52
2	FID	ACIS-S-5	7.23	7353	-0.163	0.039	0.007	0.012	0.000000	0.000000	-1818.82	167.28
3	GUIDE	261492080	9.28	14692	0.030	-0.013	0.113	0.182	194.976344	28.631585	-113.02	-1955.55
4	GUIDE	261498392	8.32	14699	0.525	0.407	0.082	0.124	194.888587	28.238913	-820.53	-700.57
5	GUIDE	261502496	7.36	14709	-0.338	-0.065	0.062	0.100	194.887297	28.065668	-1223.63	-224.26
6	GUIDE	261505760	9.83	14684	-0.080	-0.218	0.121	0.195	193.736841	27.992885	1397.33	2338.25
7	GUIDE	261503168	8.59	14695	-0.147	-0.106	0.088	0.133	193.765545	28.234101	1885.53	1614.65

2.4 Star Slots

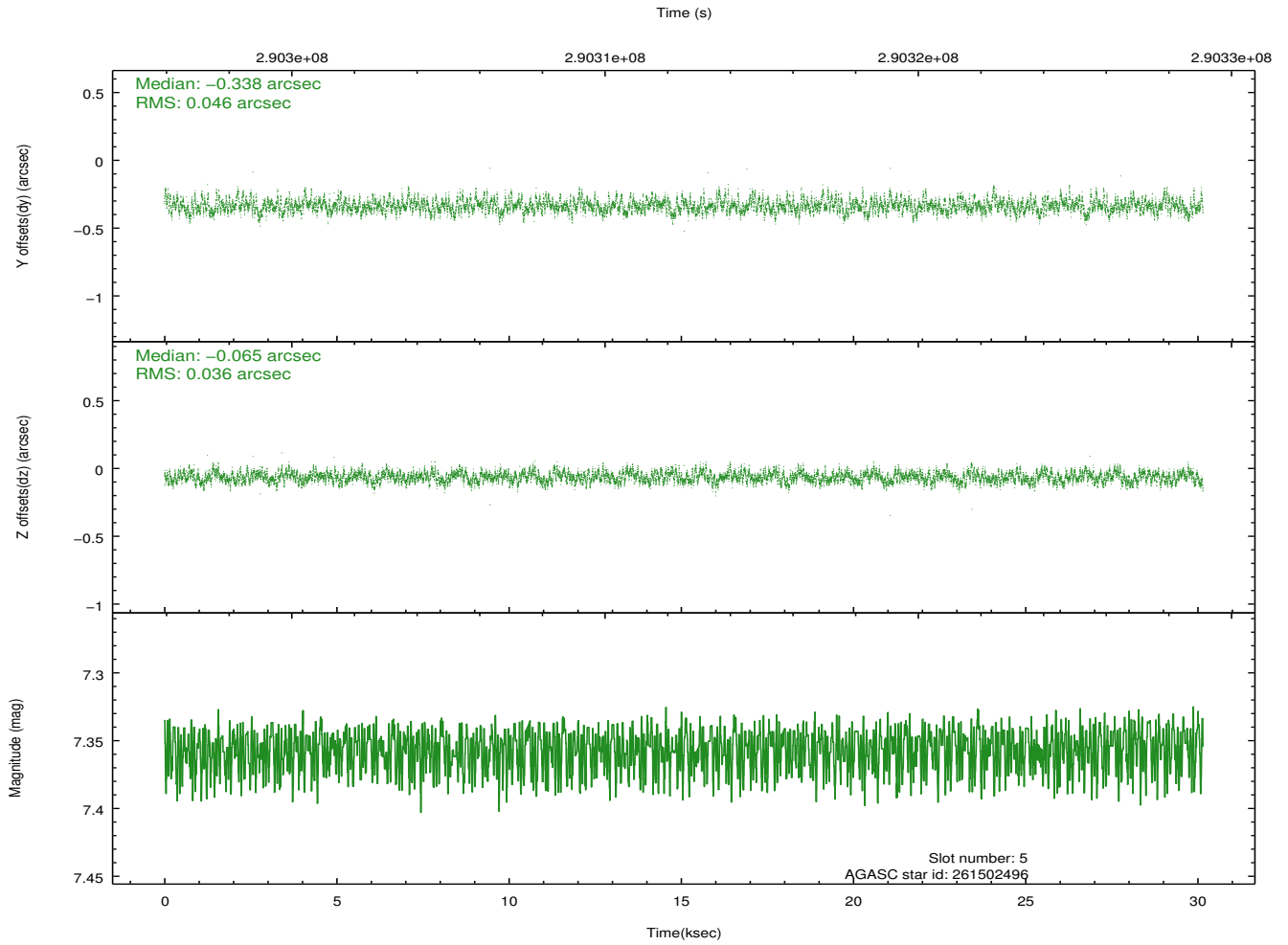
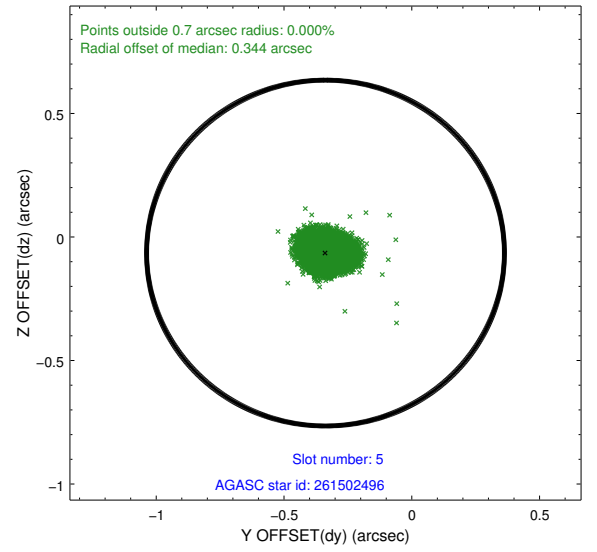
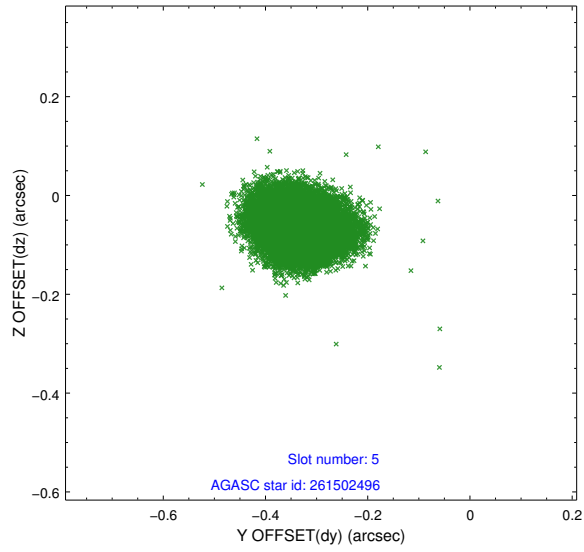
2.4.1 Slot 3



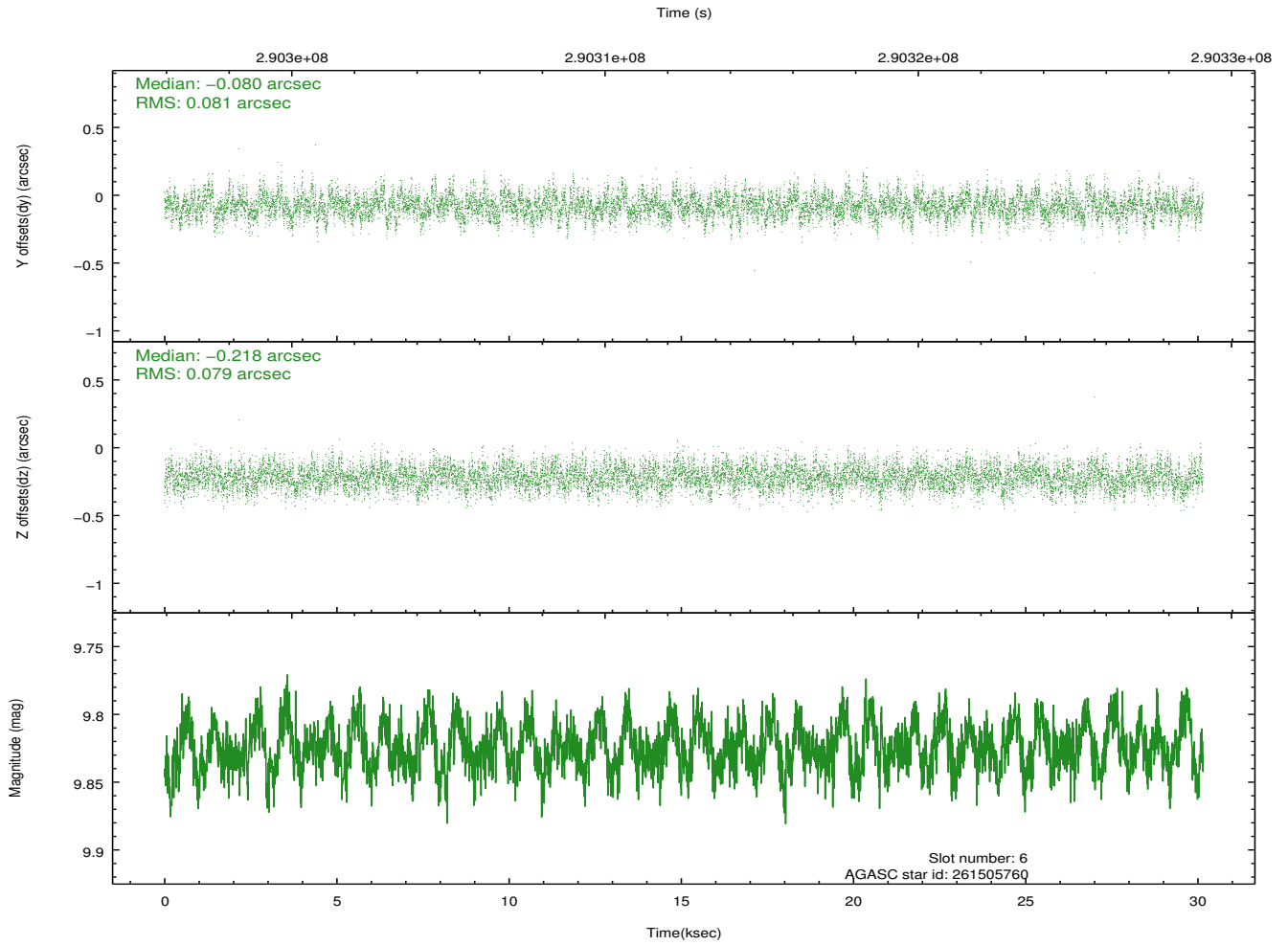
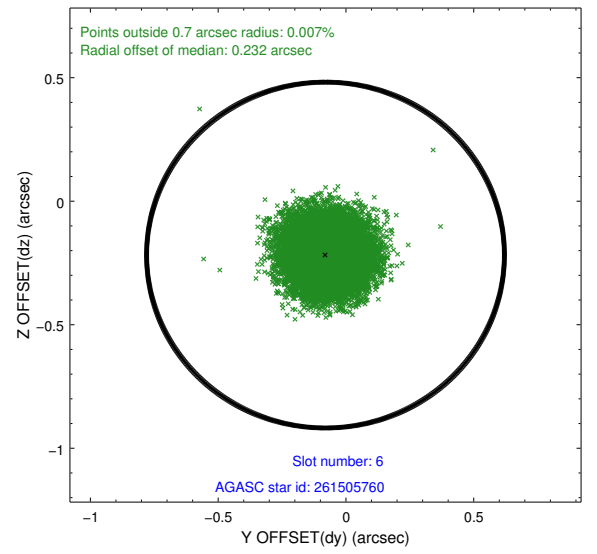
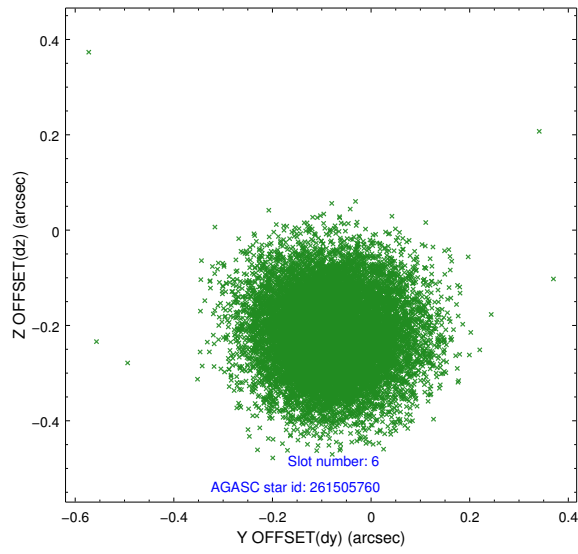
2.4.2 Slot 4



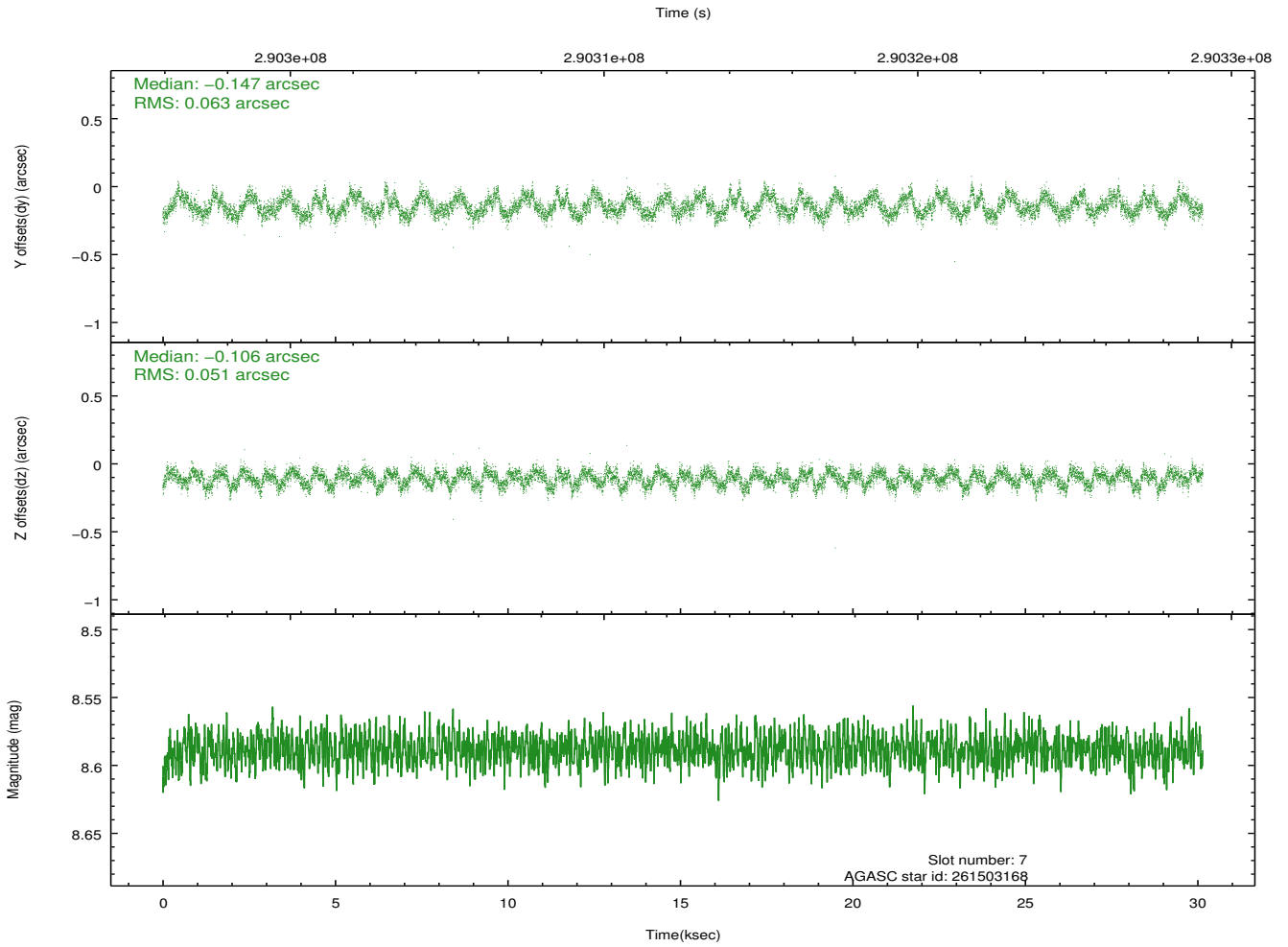
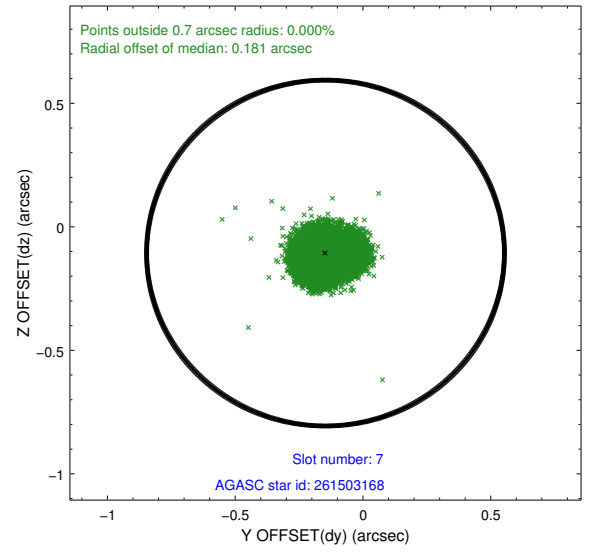
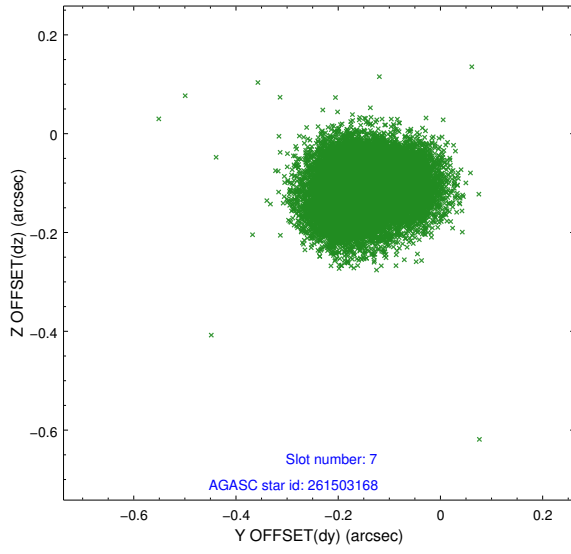
2.4.3 Slot 5



2.4.4 Slot 6

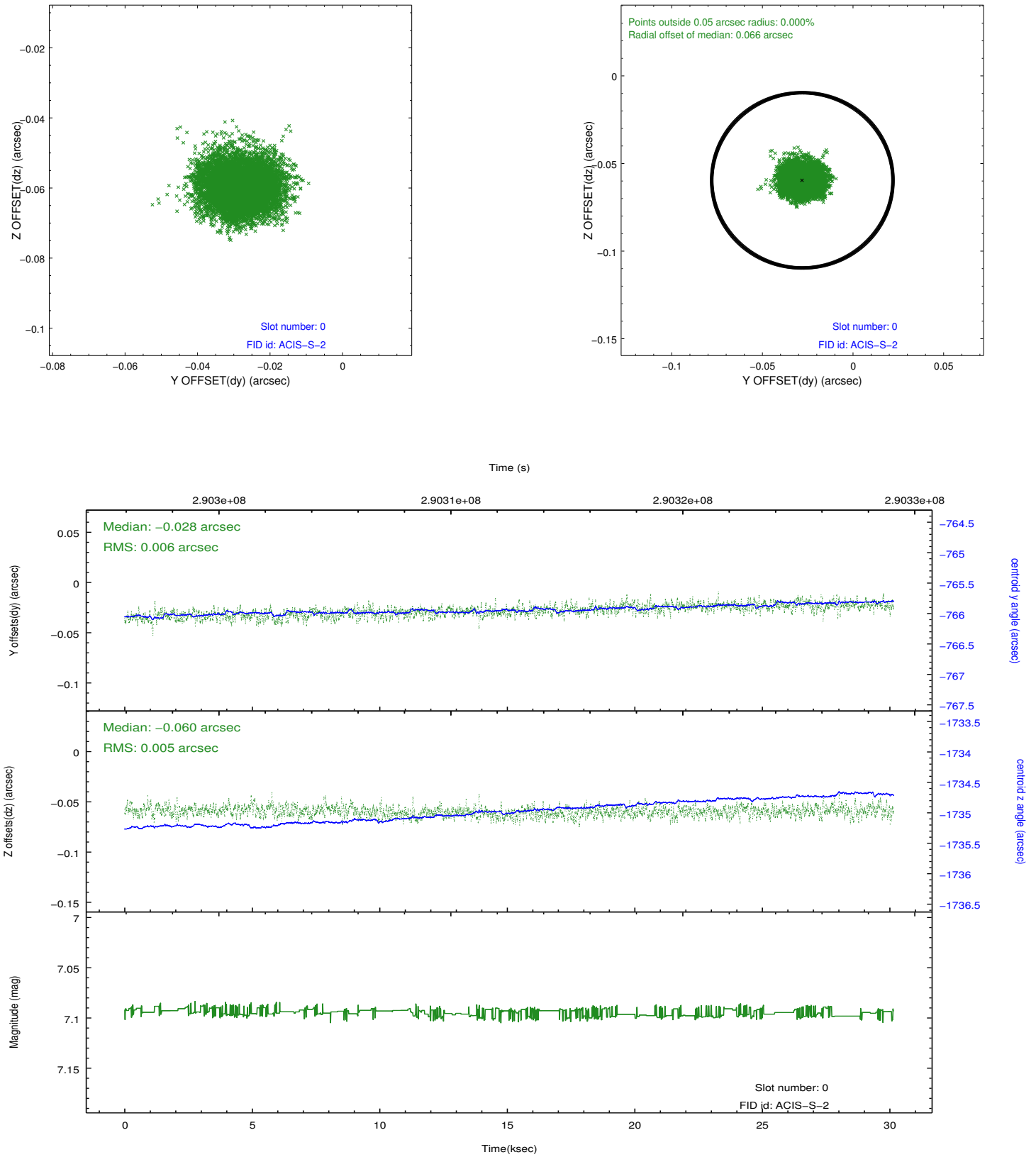


2.4.5 Slot 7

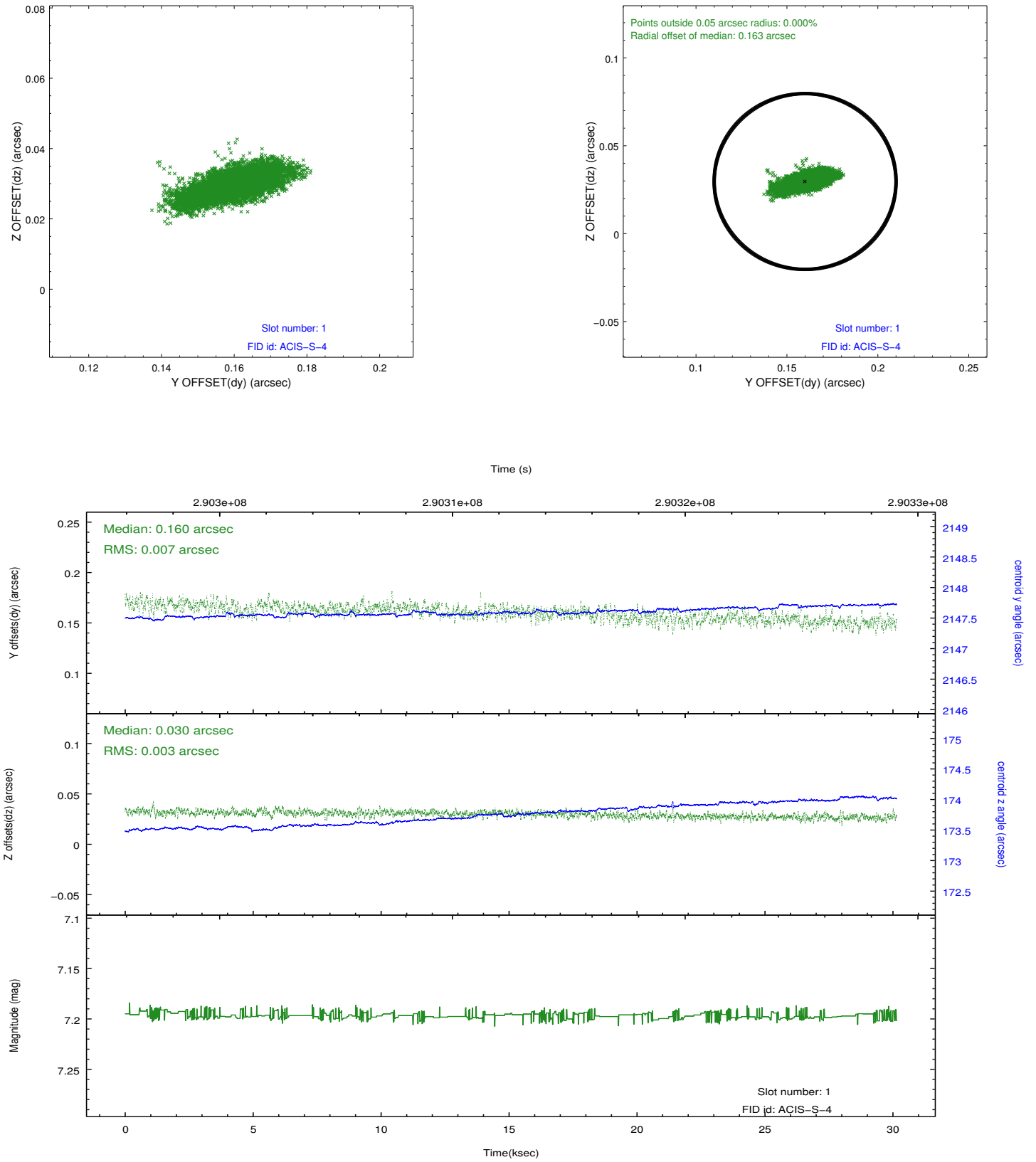


2.5 FID Slots

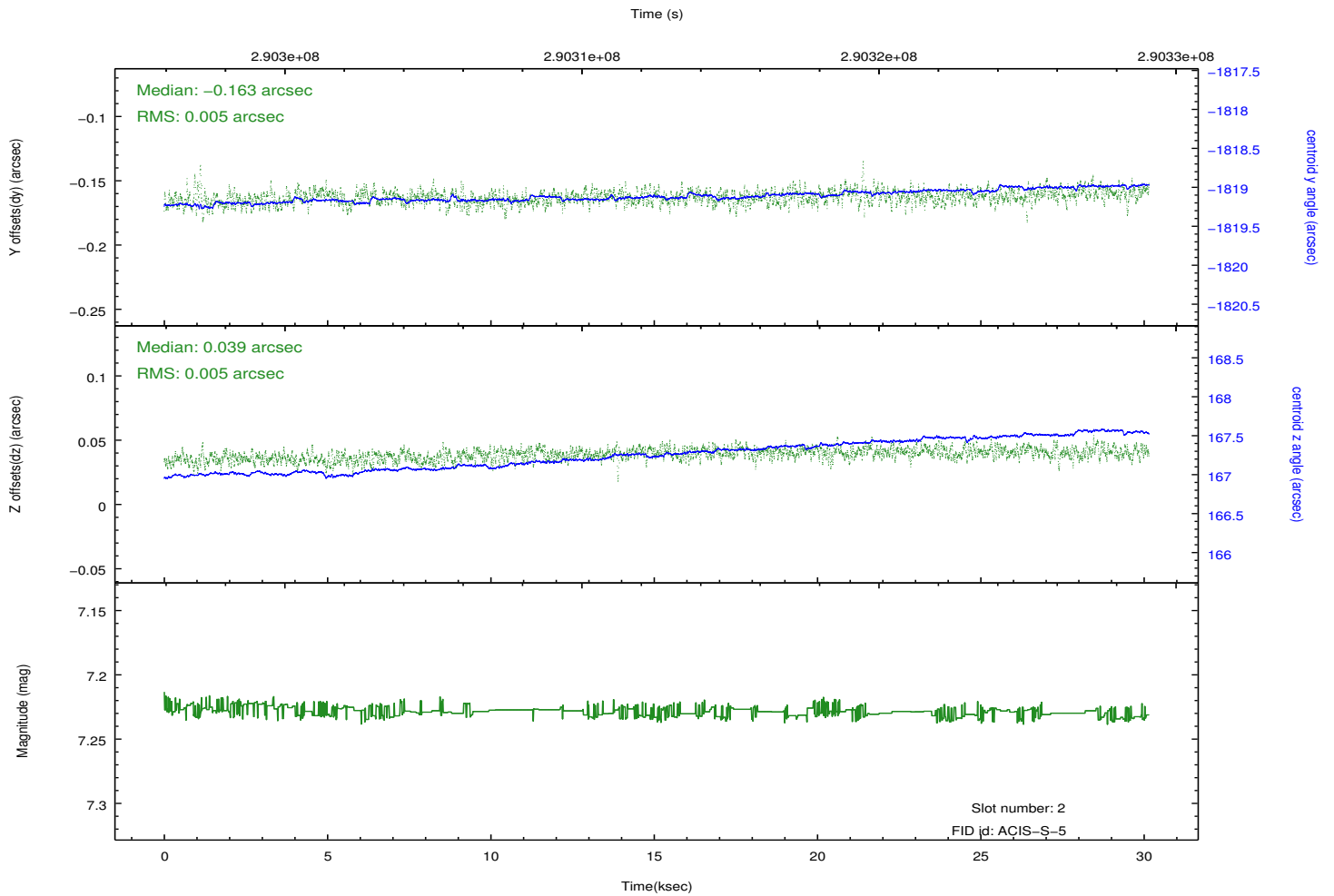
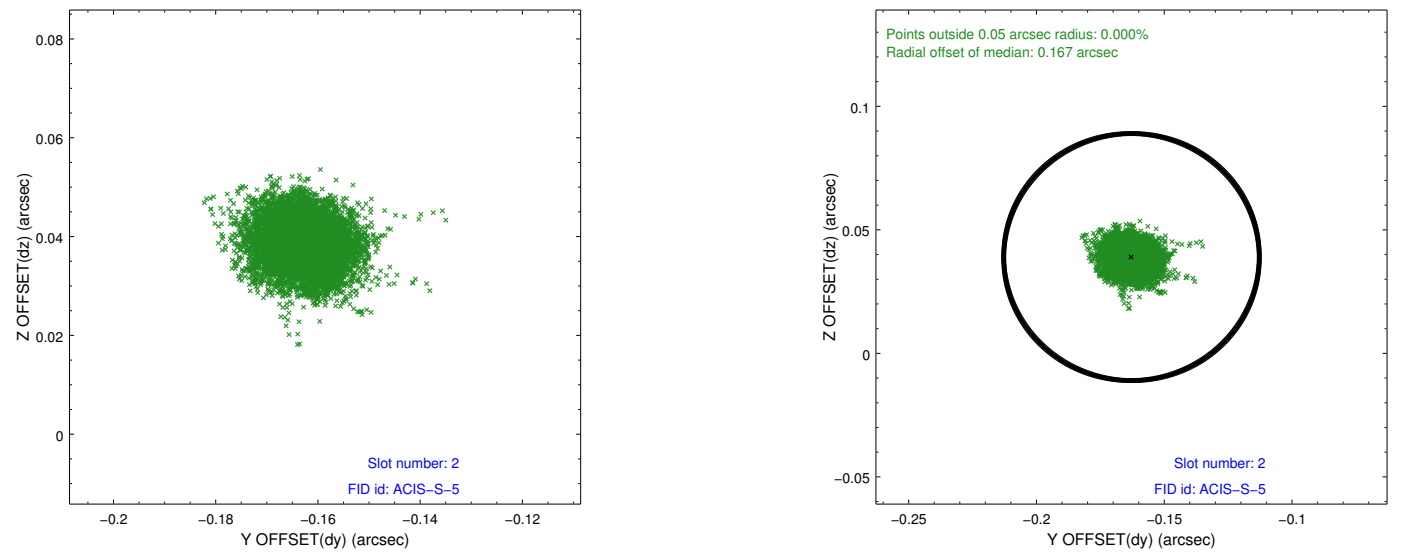
2.5.1 Slot 0



2.5.2 Slot 1



2.5.3 Slot 2



A Summary

A.1 Status

V&V Scientist	Beth Sundheim
V&V Date (YYYY-MM-DD)	2012.04.23
V&V Edition	1
V&V Disposition and Status	OK
V&V Charge Time	29.0377002

A.2 Comments