

V&V Reference Report

L2 ASCDS Version : 8.4.4

Observation 8028 - L2 Version 3
Chandra X-Ray Center

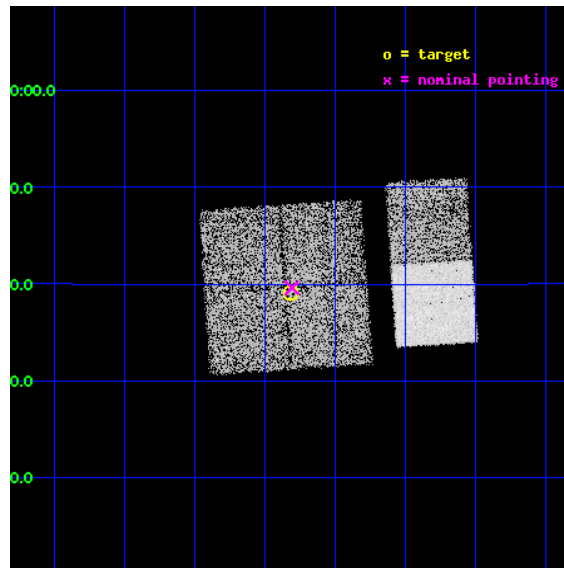
L2 Processing Date : Apr 20 2012

Contents

1	Front	2
2	OBI	3
2.1	OBI	3
2.1.1	Images	3
2.1.2	Bias	3
2.1.3	Parameters	4
2.1.4	Events	4
2.2	Compared Parameters	5
2.3	Aspect	6
2.4	Star Slots	9
2.4.1	Slot 3	9
2.4.2	Slot 4	10
2.4.3	Slot 5	11
2.4.4	Slot 6	12
2.4.5	Slot 7	13
2.5	FID Slots	14
2.5.1	Slot 0	14
2.5.2	Slot 1	15
2.5.3	Slot 2	16
A	Summary	17
A.1	Status	17
A.2	Comments	17

1 Front

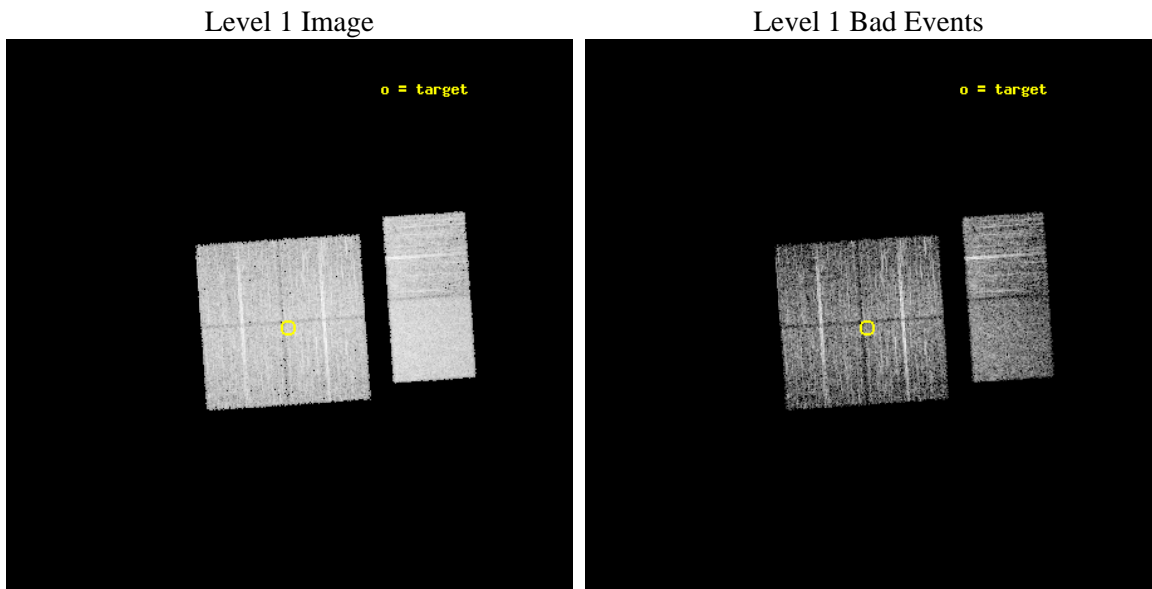
seq_num	900572	Sequence number
obs_id	8028	Observation id
title	Discovering the absorbed AGN population responsible for the hard X-ray background	Proposal title
observer	Ms Simona Soldi	Principal investigator
object	IGR J1305+1139	Source name
dtcycle	0	
cycle	P	events from which exps? Prim/Second/Both
ra_targ	196.329167	Observer's specified target RA [deg]
dec_targ	11.6525	Observer's specified target Dec [deg]
ra_nom	196.3271517487	Nominal RA [deg]
dec_nom	11.660273757517	Nominal Dec [deg]
roll_nom	86.10470735821	Nominal Roll [deg]
revision	3	Processing version of data
ontime	4649.5589824319	Sum of GTIs [s]
livetime	4590.683466968	Livetime [s]
ontime0	4652.7999827266	Sum of GTIs [s]
ontime1	4649.5589725375	Sum of GTIs [s]
ontime2	4652.7999827266	Sum of GTIs [s]
ontime3	4649.5589824319	Sum of GTIs [s]
ontime6	4652.7999827266	Sum of GTIs [s]
ontime7	4652.7999827266	Sum of GTIs [s]
l2events	50305	Number of level 2 events



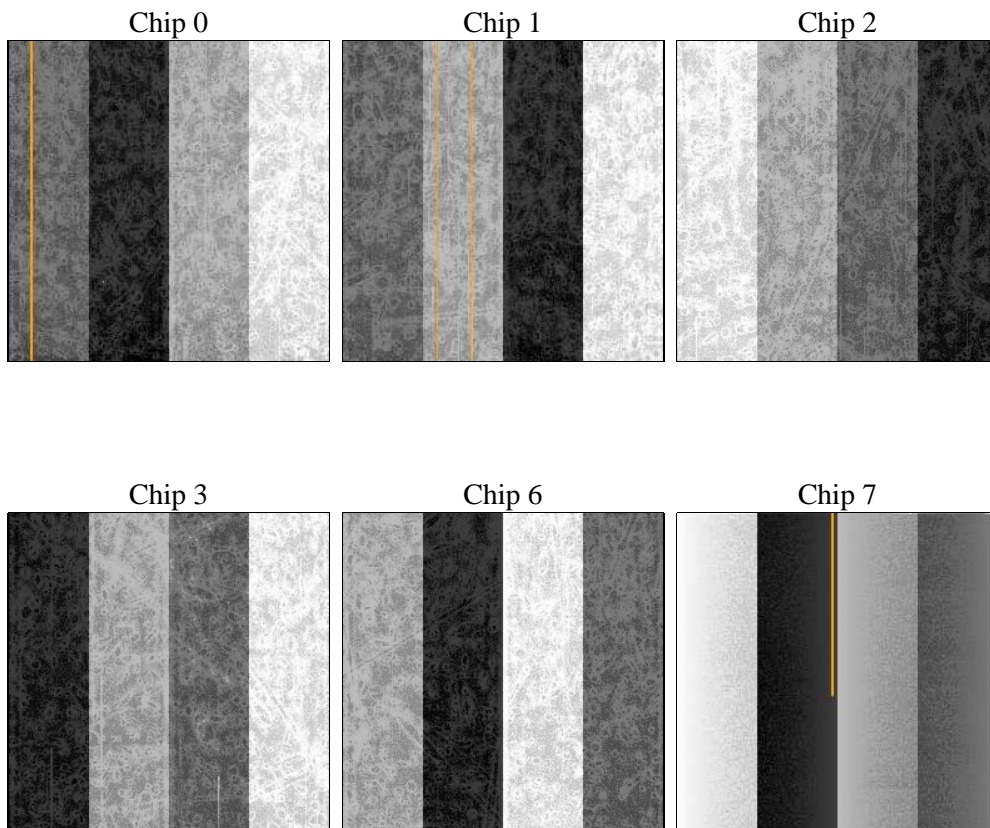
2 OBI

2.1 OBI

2.1.1 Images



2.1.2 Bias



2.1.3 Parameters

obi_num	0	Obi number	sched_exp_time	4700.000000	[s] Scheduled observation exposure time
ascdsver	8.4.4	Processing system revision	ontime	4649.5589824319	Sum of GTIs [s]
caldsver	4.4.9	 	ontime0	4652.7999827266	Sum of GTIs [s]
date	2012-04-20T04:40:05	Date and time of file creation	ontime1	4649.5589725375	Sum of GTIs [s]
revision	3	Processing version of data	ontime2	4652.7999827266	Sum of GTIs [s]
			ontime3	4649.5589824319	Sum of GTIs [s]
			ontime6	4652.7999827266	Sum of GTIs [s]
			ontime7	4652.7999827266	Sum of GTIs [s]
			l1events	273007	Number of level 1 events

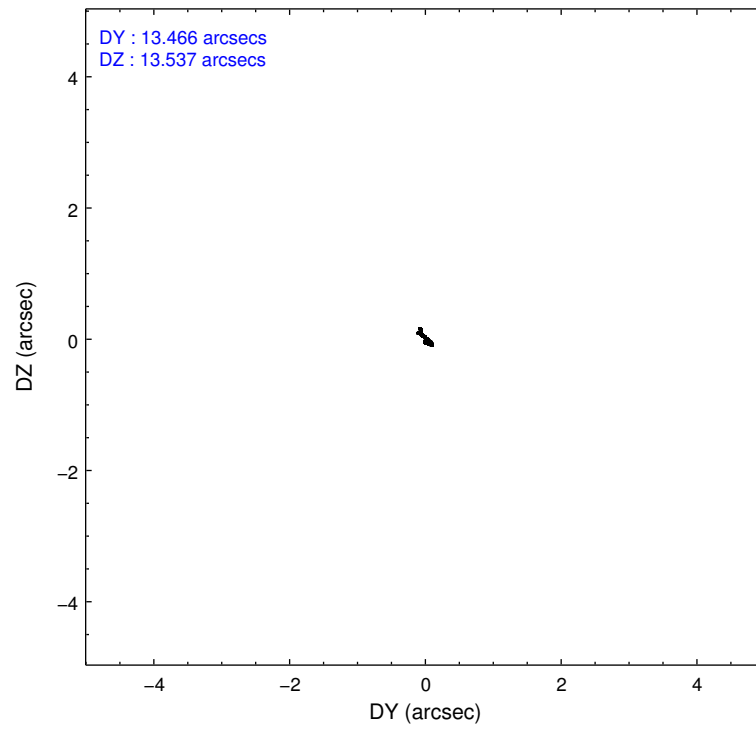
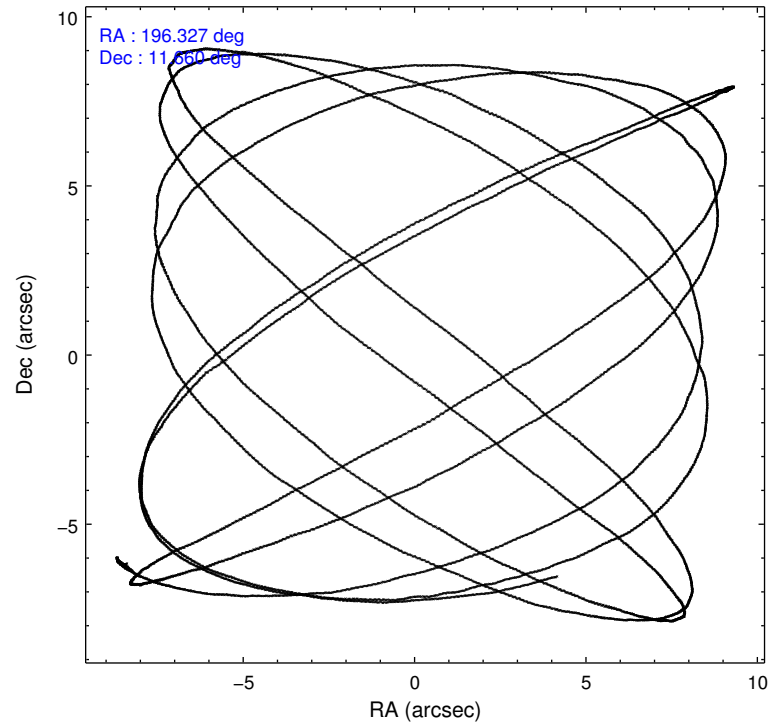
2.1.4 Events

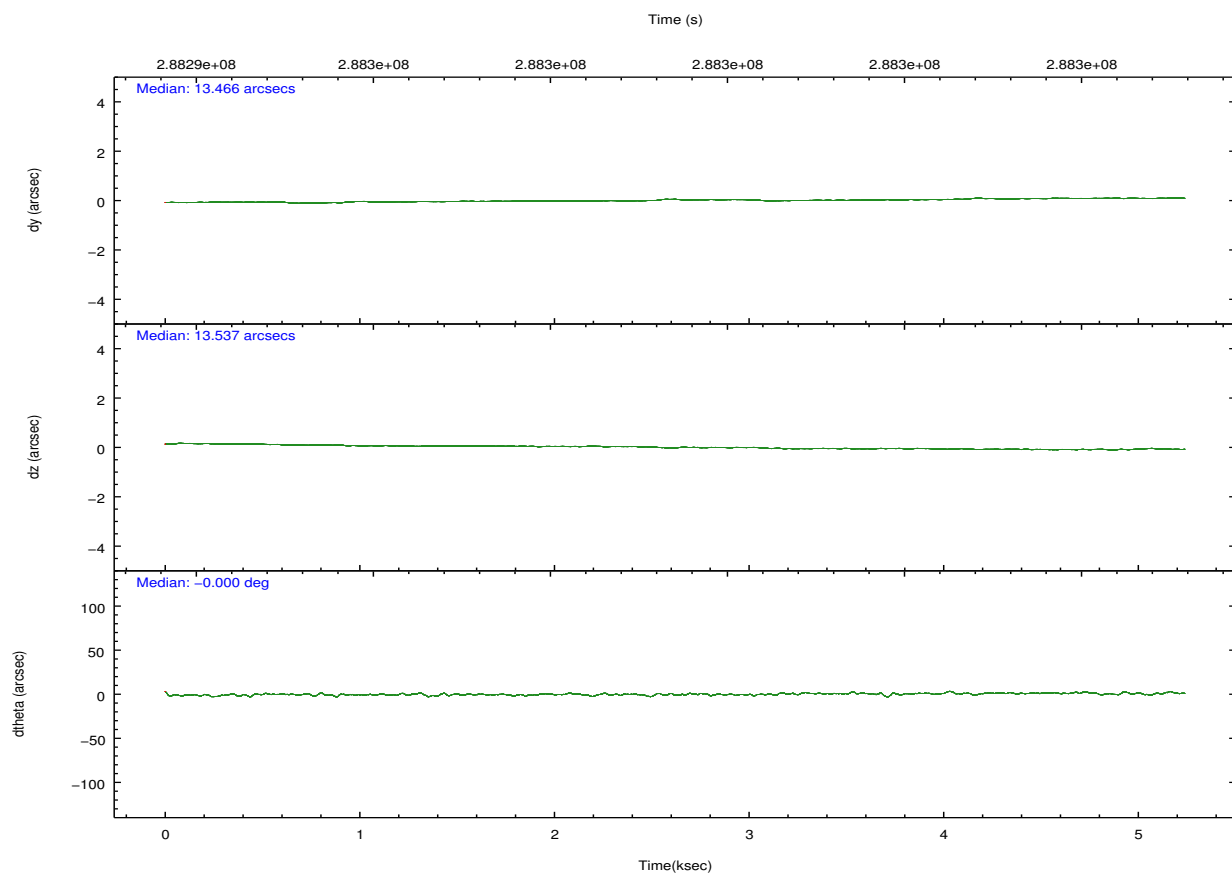
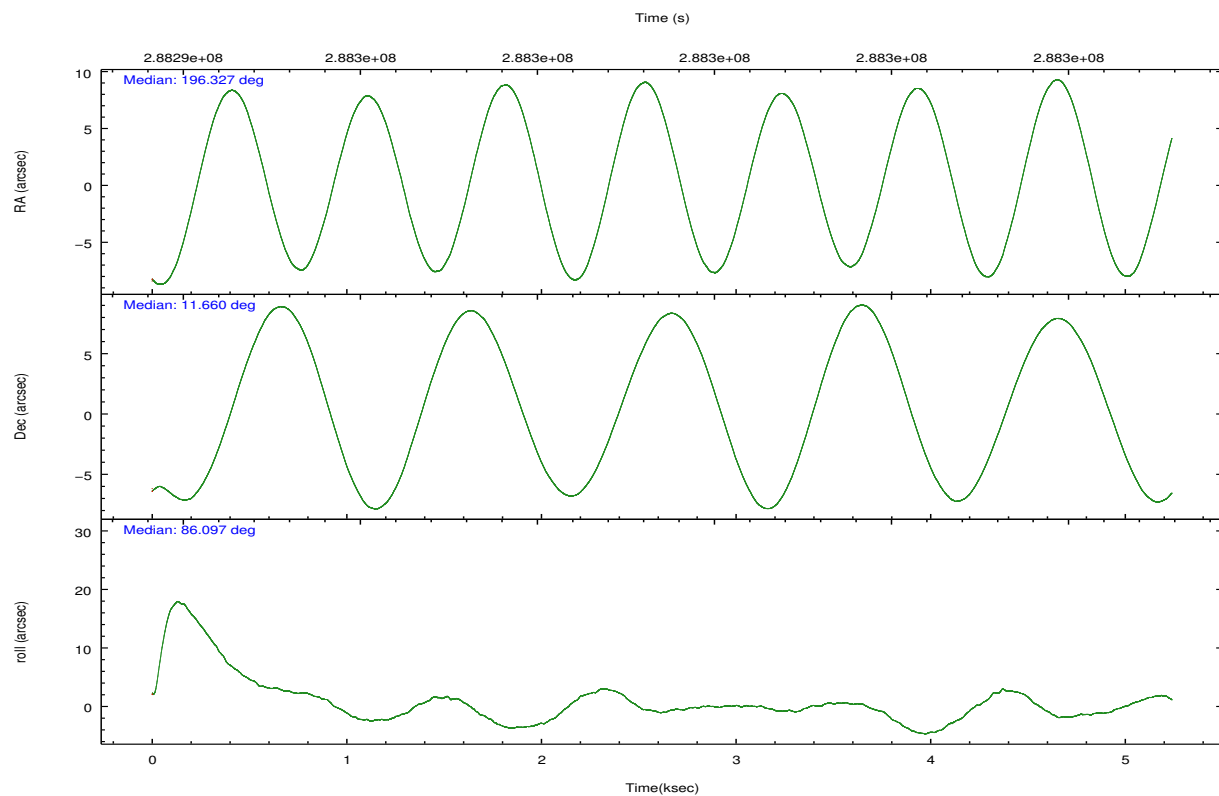
	ccd 0	ccd 1	ccd 2	ccd 3	ccd 6	ccd 7		ccd 0	ccd 1	ccd 2	ccd 3	ccd 6	ccd 7
level 1 events	39767	40097	45014	42699	45452	59978	grade 0 events	2730	2581	2587	2772	2611	2321
rejected events	33950	34007	39497	36927	39486	34495		6%	6%	5%	6%	5%	3%
rejected %	85%	84%	87%	86%	86%	57%	grade 1 events	34	13	26	33	30	71
								0%	0%	0%	0%	0%	0%
							grade 2 events	1184	1355	1147	1054	1175	5153
								2%	3%	2%	2%	2%	8%
							grade 3 events	491	572	459	487	517	2170
								1%	1%	1%	1%	1%	3%
							grade 4 events	481	484	457	515	504	2133
								1%	1%	1%	1%	1%	3%
							grade 5 events	1673	1806	1722	1974	1974	5585
								4%	4%	3%	4%	4%	9%
							grade 6 events	933	1098	875	949	1161	13721
								2%	2%	1%	2%	2%	22%
							grade 7 events	32241	32188	37741	34915	37480	28824
								81%	80%	83%	81%	82%	48%

2.2 Compared Parameters

Parameter	Planned	Actual	Parameter	Planned	Actual
Instrument	ACIS	ACIS	Obspar format version number	7	7
Detector	ACIS-012367	ACIS-012367	Obspar file type	PREDICTED	ACTUAL
Grating	NONE	NONE	Obspar update status	NONE	UPDATED
Data mode	FAINT	FAINT	CCD I0 on	Y	Y
Observation mode	POINTING	POINTING	CCD I1 on	Y	Y
[deg] Pointing RA	196.339703	196.3271517487048	CCD I2 on	Y	Y
[deg] Pointing Dec	11.635719	11.66027375751657	CCD I3 on	Y	Y
[deg] Pointing Roll	85.893521	86.10470735821012	CCD S0 on	N	N
[mm] SIM focus pos	-0.782348	-0.7809083437167272	CCD S1 on	N	N
[mm] SIM defocus	0	0.001439871863259334	CCD S2 on	O1	Y
[mm] SIM translation stage pos	-233.592463	-233.5874344608287	CCD S3 on	O2	Y
[mm] SIM translation stage offset	0	-0.005018542100998502	CCD S4 on	N	N
[s] Observation start time (MET)	288294619.184000	288293483.77138	CCD S5 on	N	N
Observation start date	2007-02-19T17:49:14	2007-02-19T17:31:23	Number of optional ACIS chips dropped	0	0
[s] Observation end time (MET)	288299319.184000	288299527.17166	On-chip summing requested	N	N
Observation end date	2007-02-19T19:07:34	2007-02-19T19:12:07	Subarray requested	NONE	NONE
Read mode	TIMED	TIMED	Alternating exposures requested	N	N
			[s] Primary exposure time	0.000000	3.2

2.3 Aspect



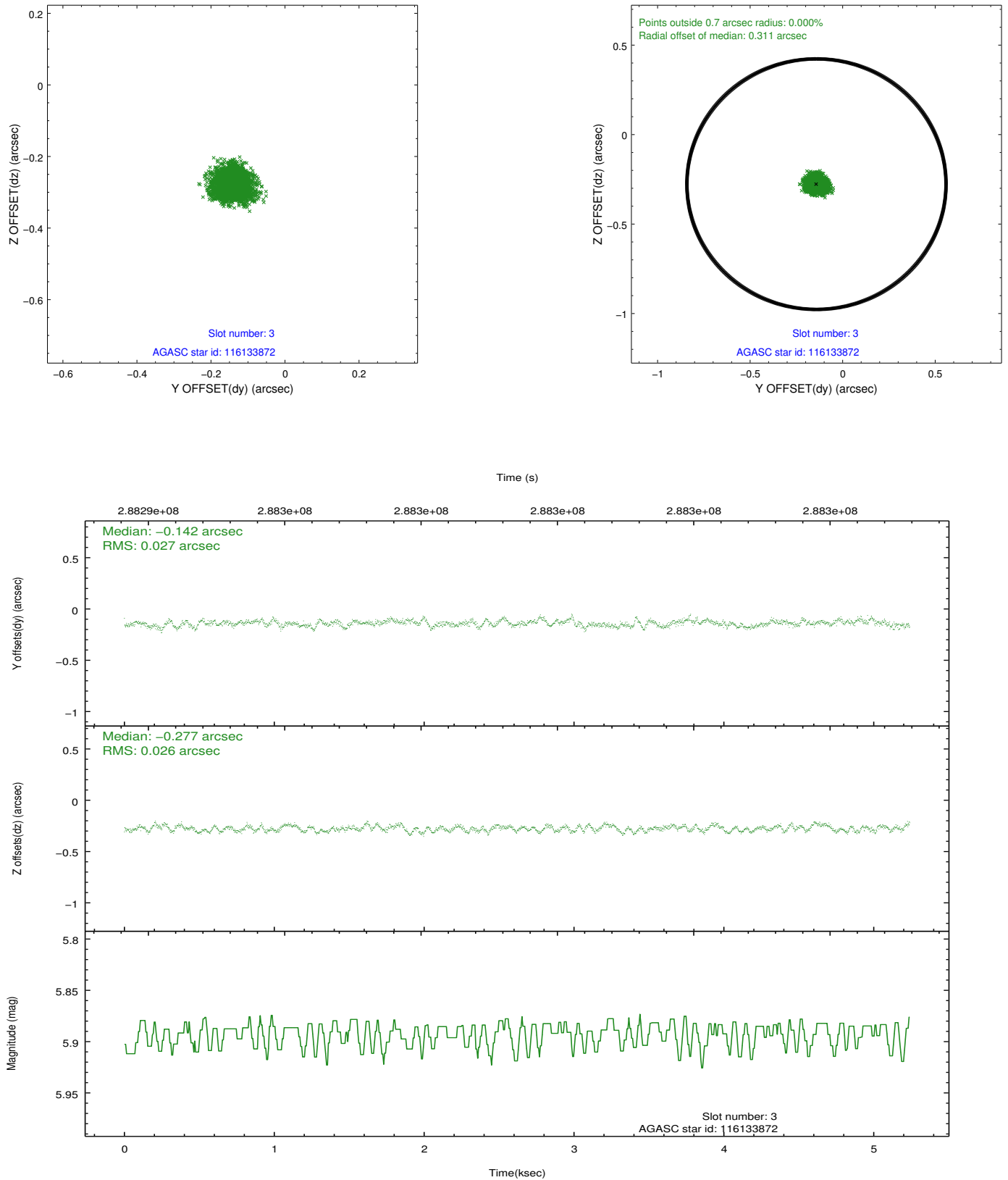


Slot Statistics

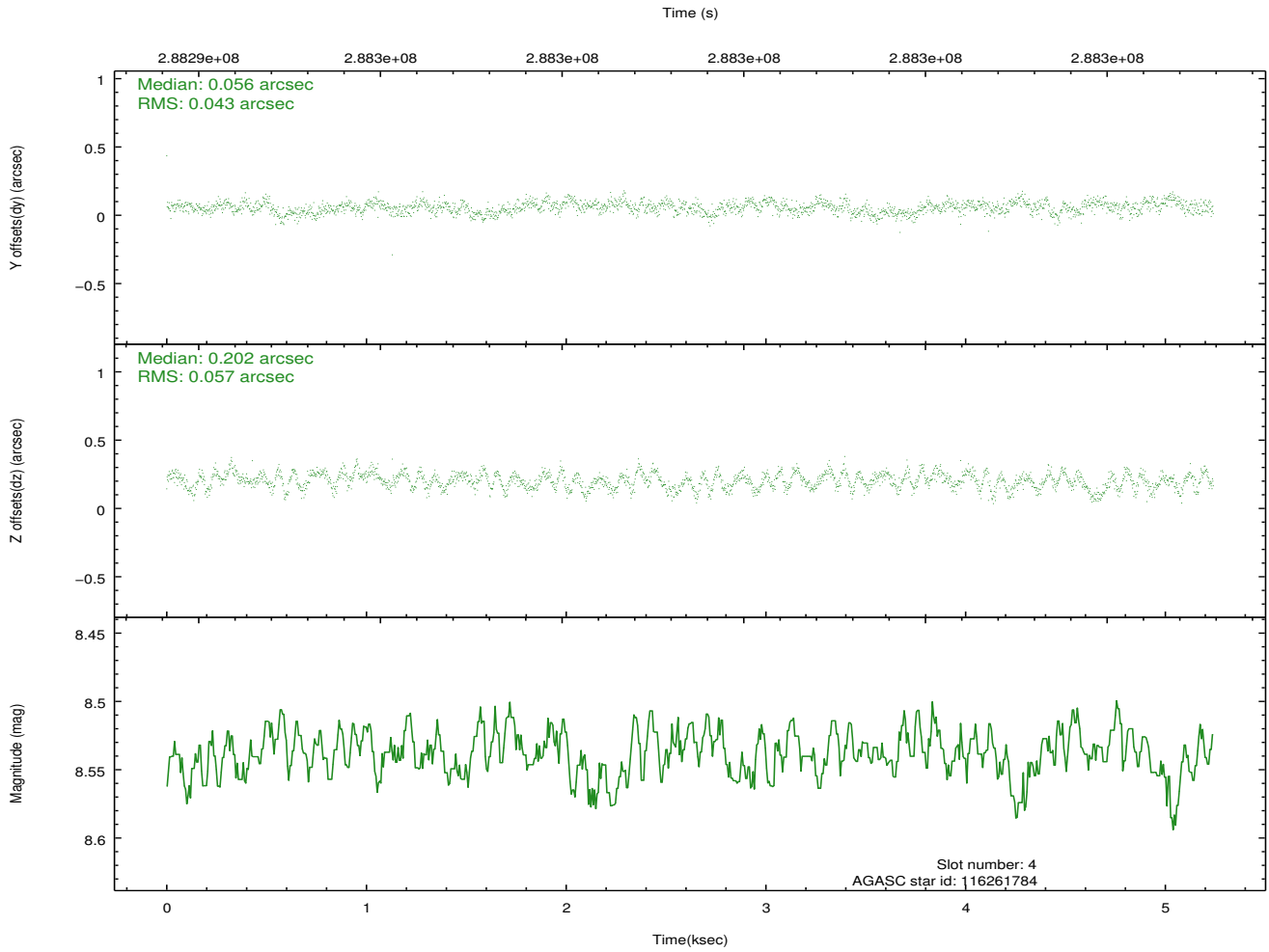
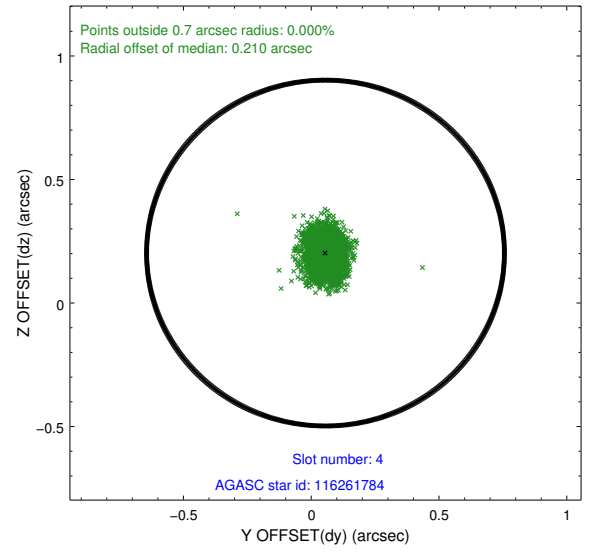
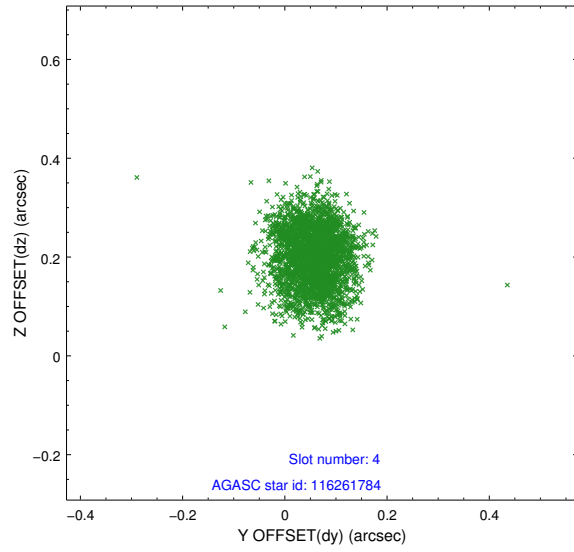
slot	status	id	mag	n_pts	med_dy	med_dz	dr1	dr2	ra	dec	mean_y	mean_z
0	FID	ACIS-I-1	7.24	1278	-0.054	0.065	0.012	0.022	0.000000	0.000000	925.95	-837.07
1	FID	ACIS-I-2	7.14	1279	-0.178	-0.108	0.012	0.019	0.000000	0.000000	-767.62	-844.21
2	FID	ACIS-I-4	7.17	1279	0.135	0.110	0.010	0.017	0.000000	0.000000	2145.56	1062.16
3	GUIDE	116133872	5.89	2557	-0.142	-0.277	0.041	0.063	195.999055	11.230683	-1539.60	1094.86
4	GUIDE	116261784	8.54	2557	0.056	0.202	0.076	0.121	196.853969	11.134859	-1667.66	-1941.05
5	GUIDE	116262664	8.42	2556	0.018	0.289	0.069	0.110	196.809372	11.278433	-1162.75	-1746.64
6	GUIDE	116267520	9.32	2552	0.073	0.024	0.100	0.171	197.020801	12.194164	2180.21	-2247.05
7	GUIDE	116137152	8.79	2553	-0.002	-0.241	0.070	0.113	195.859909	11.979874	1117.23	1773.23

2.4 Star Slots

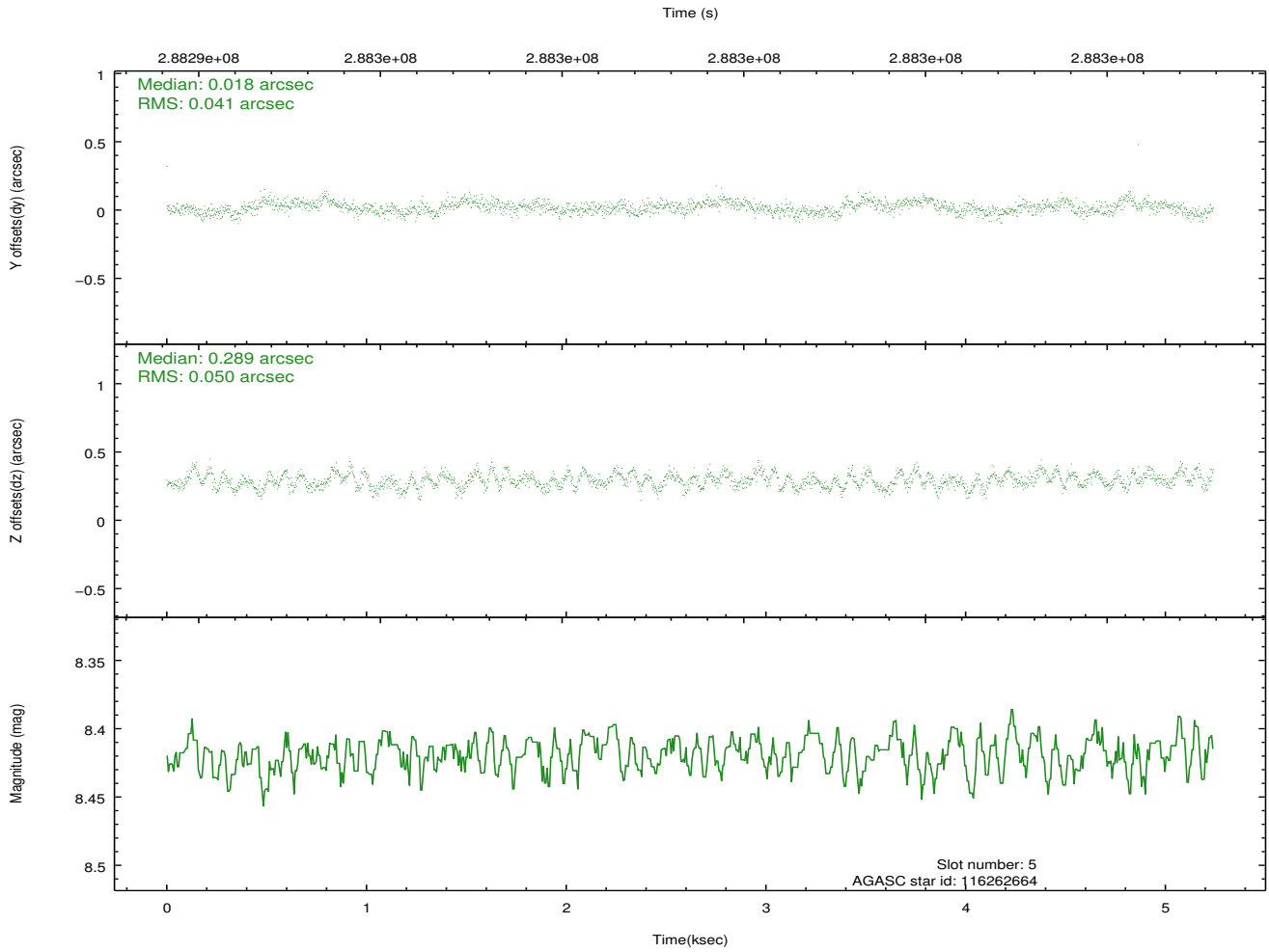
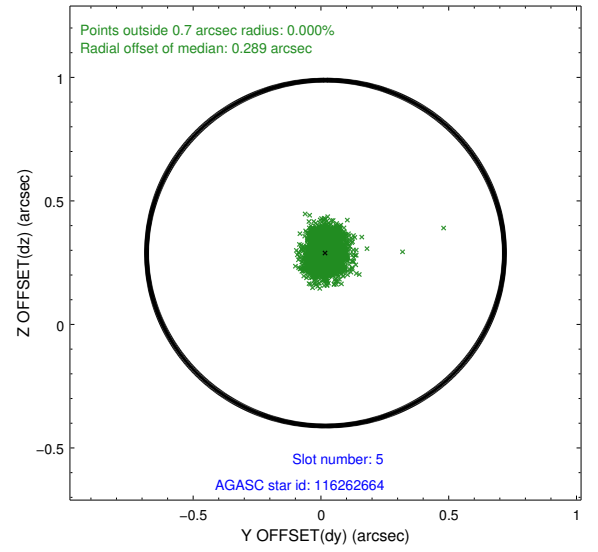
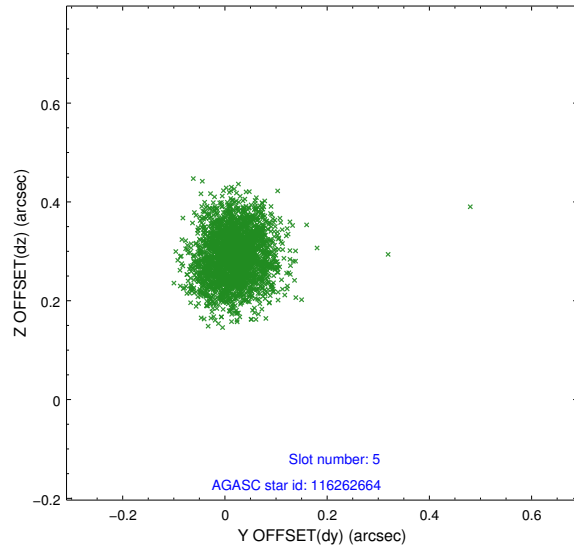
2.4.1 Slot 3



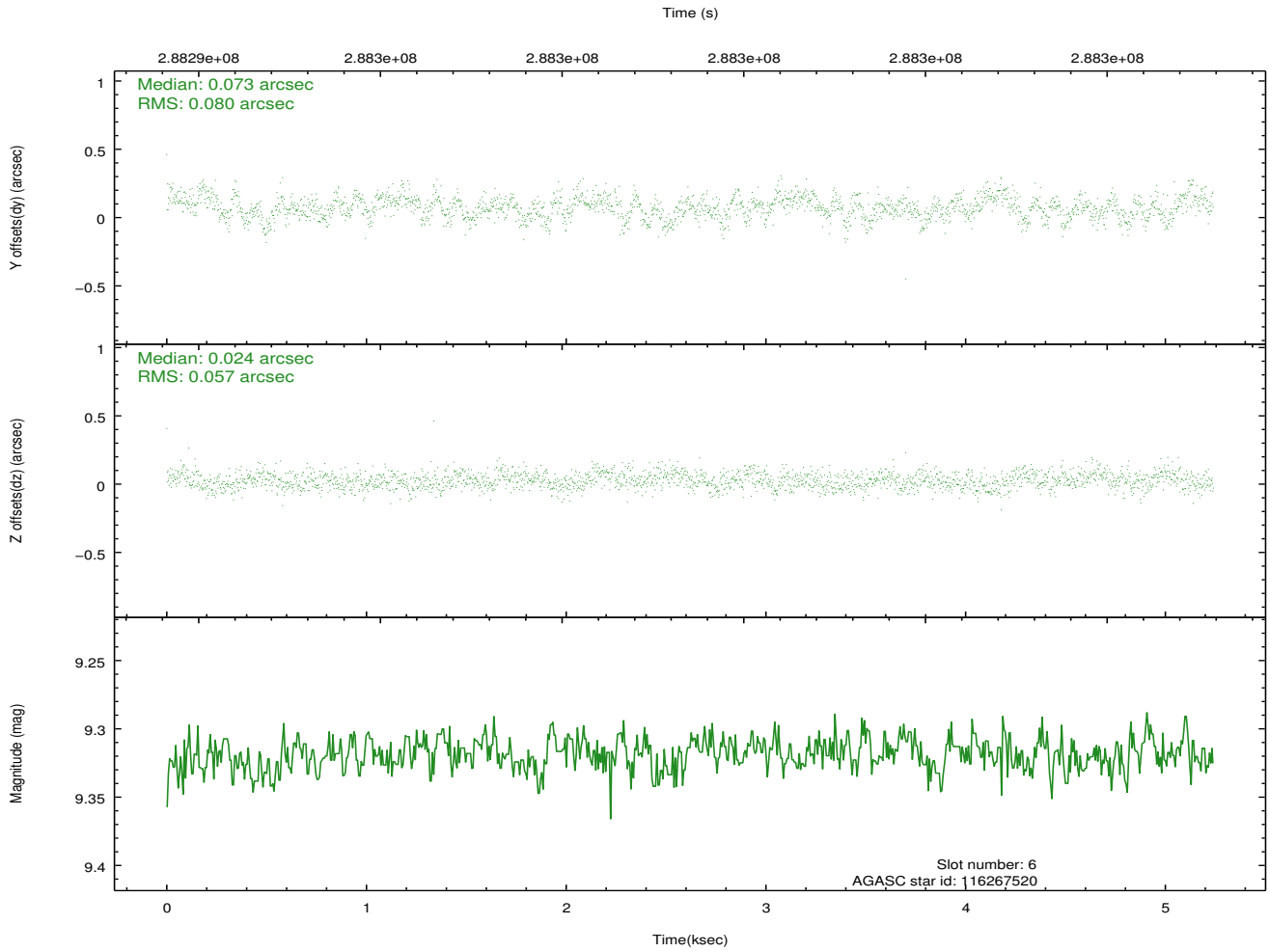
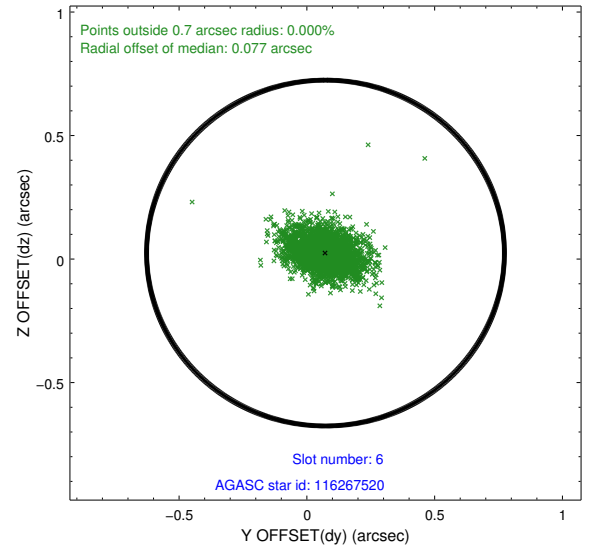
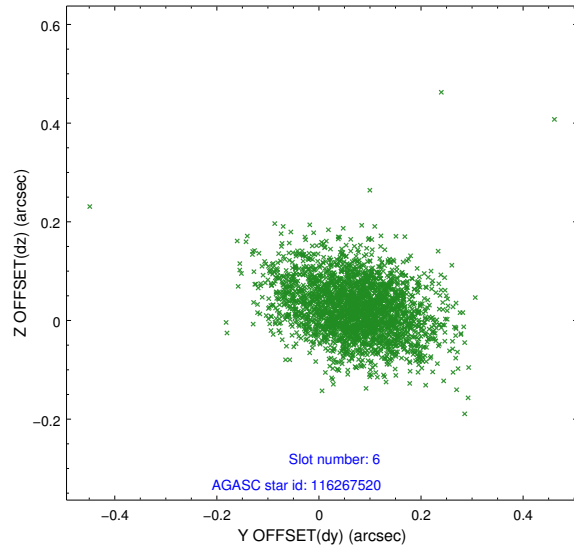
2.4.2 Slot 4



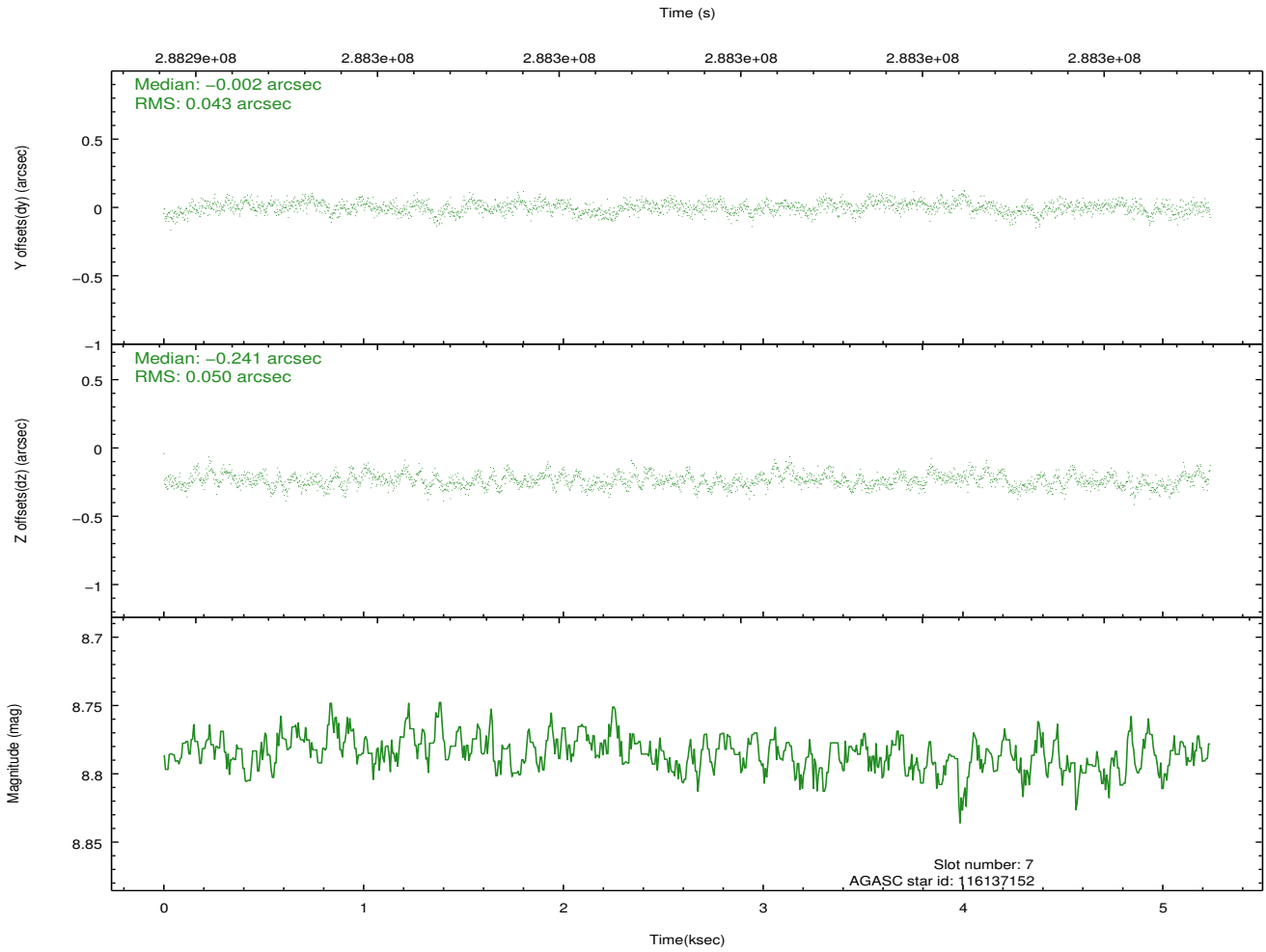
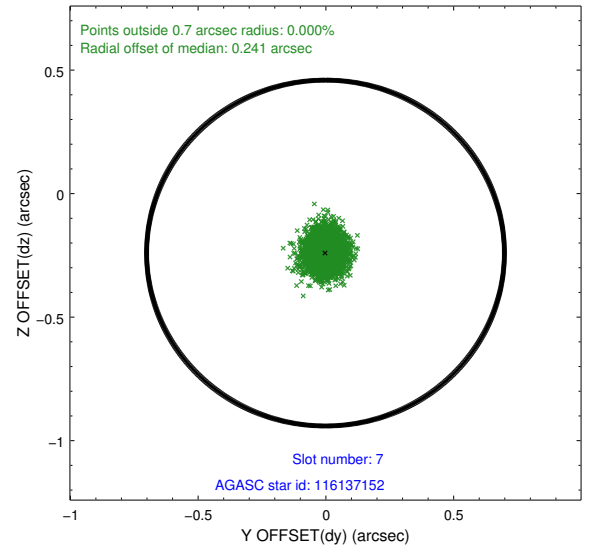
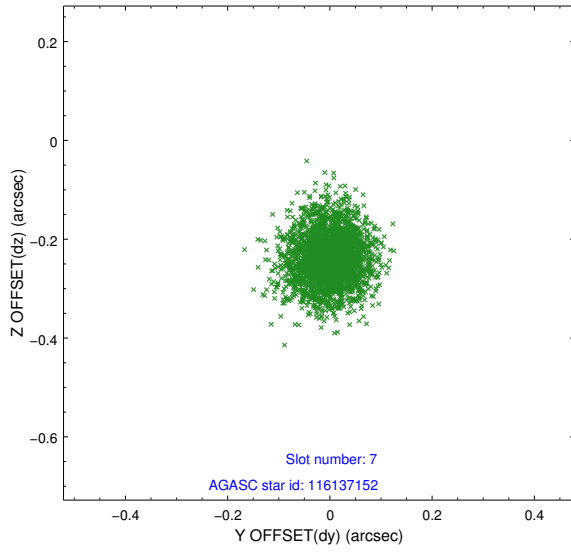
2.4.3 Slot 5



2.4.4 Slot 6

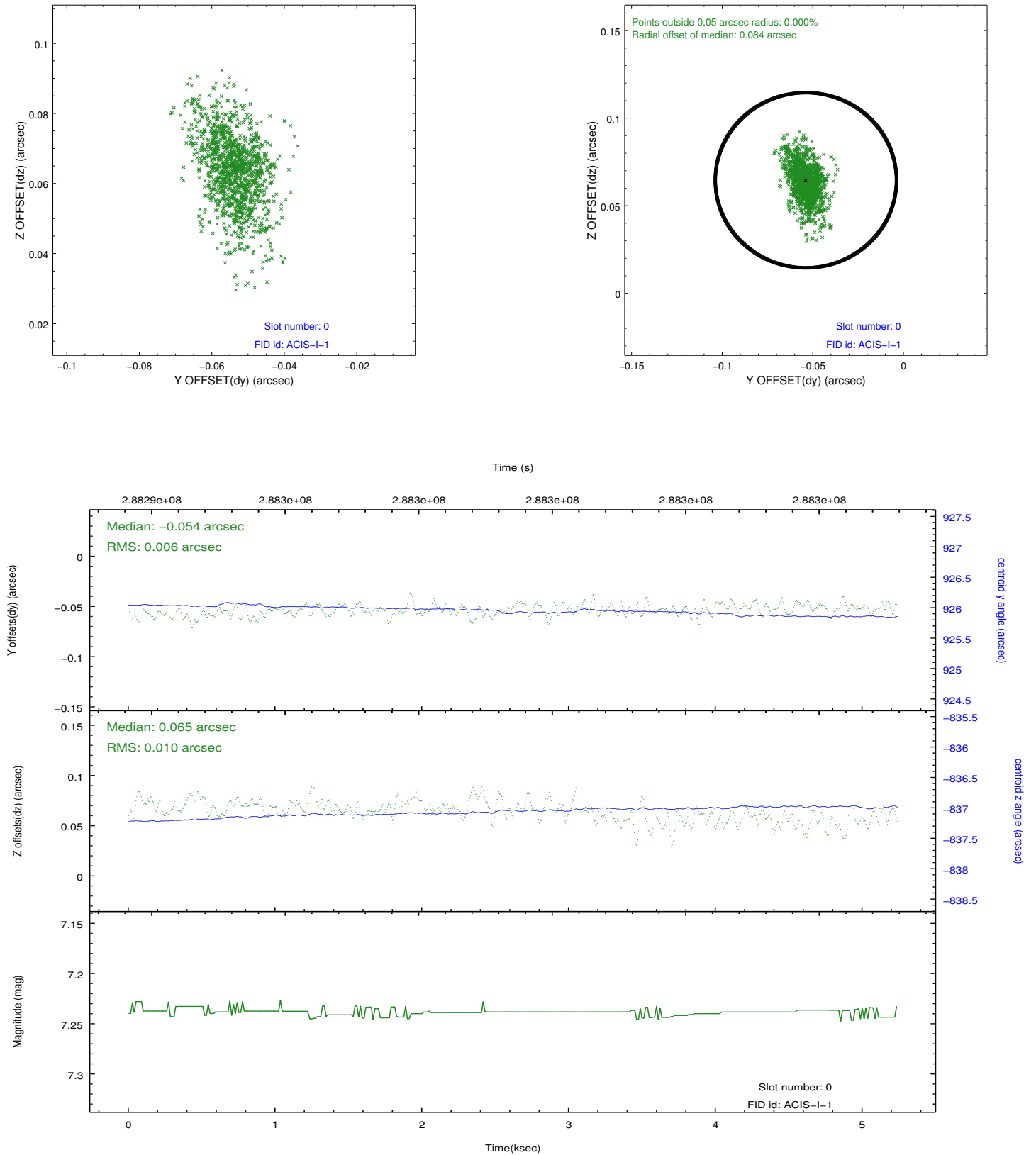


2.4.5 Slot 7

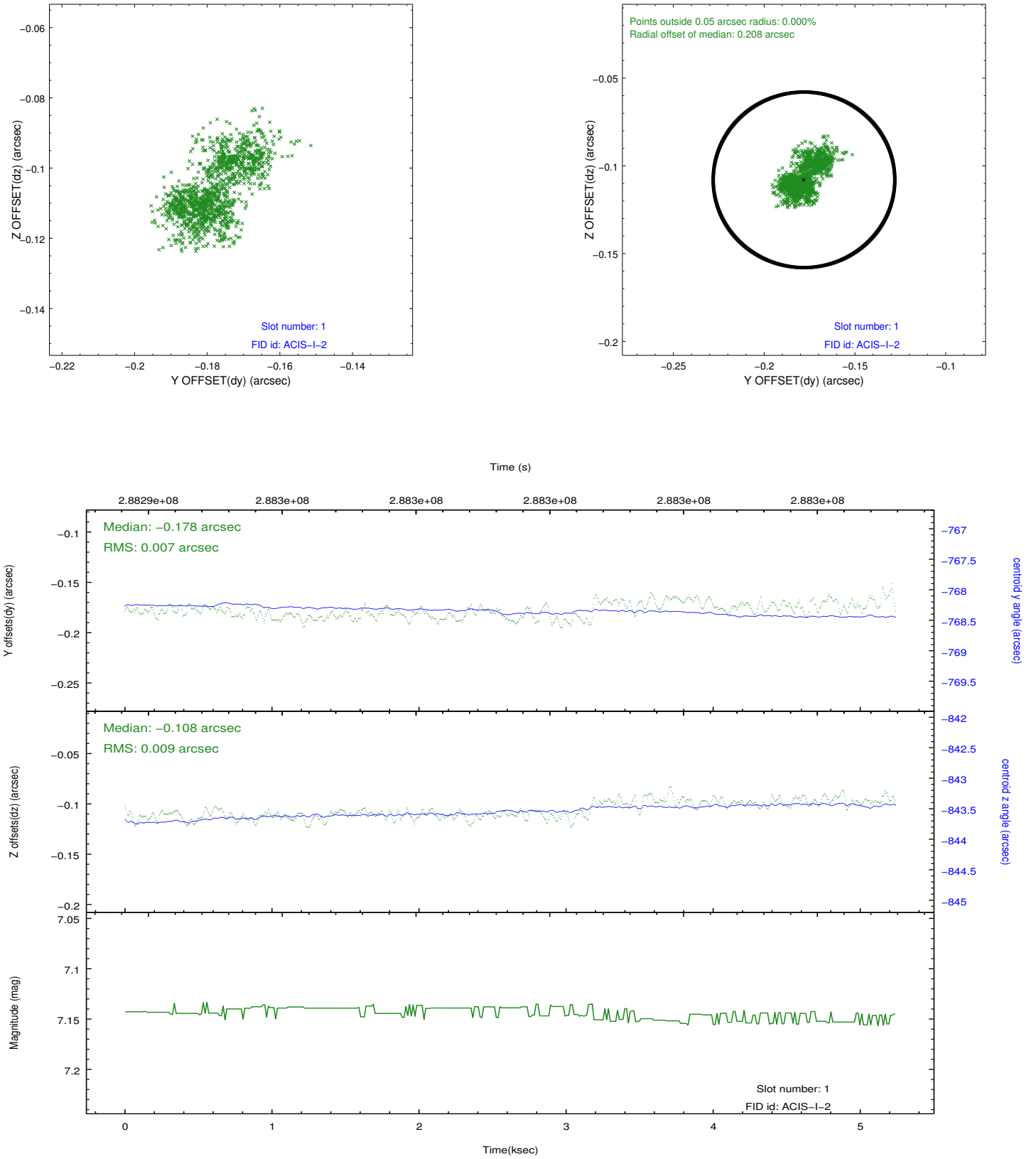


2.5 FID Slots

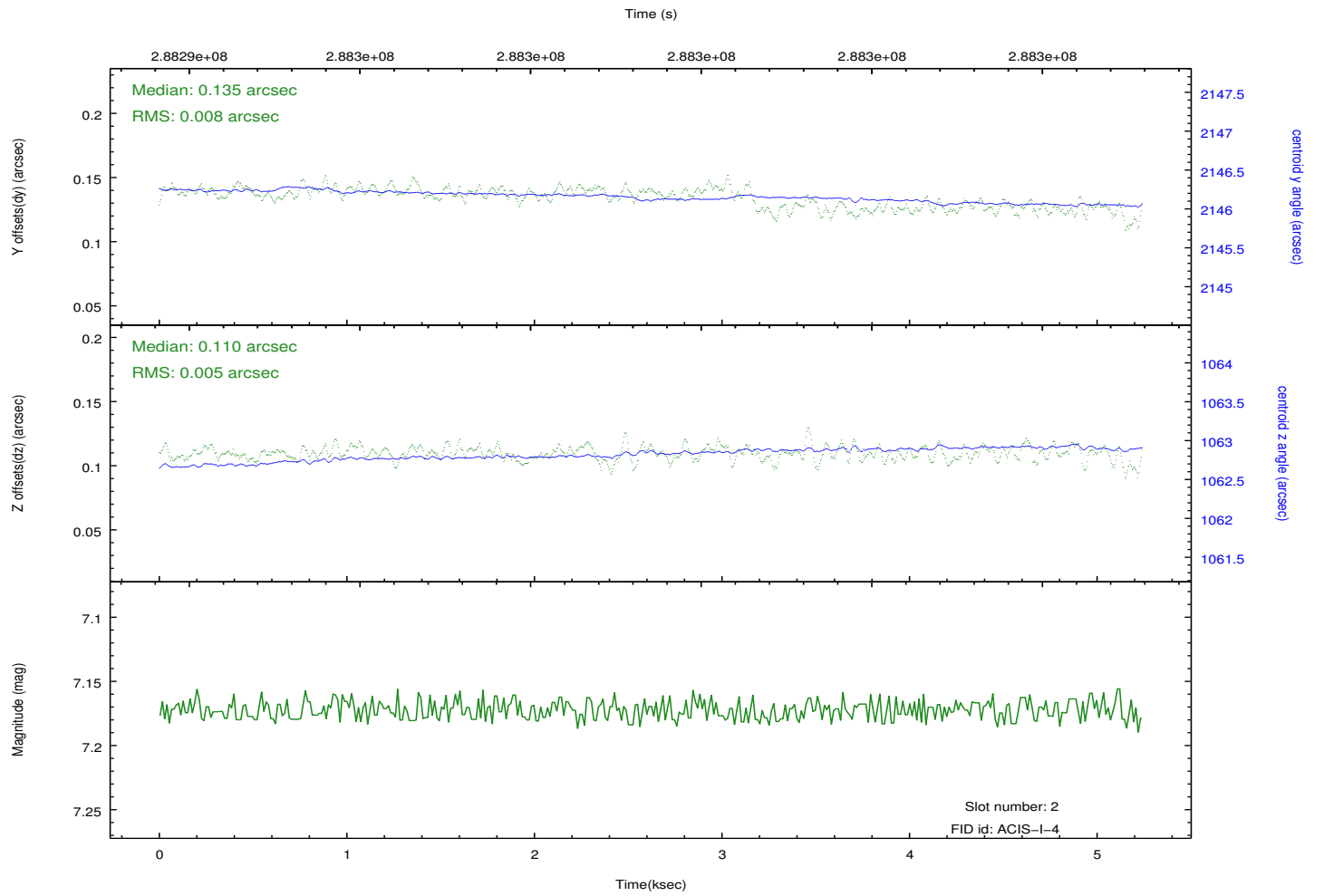
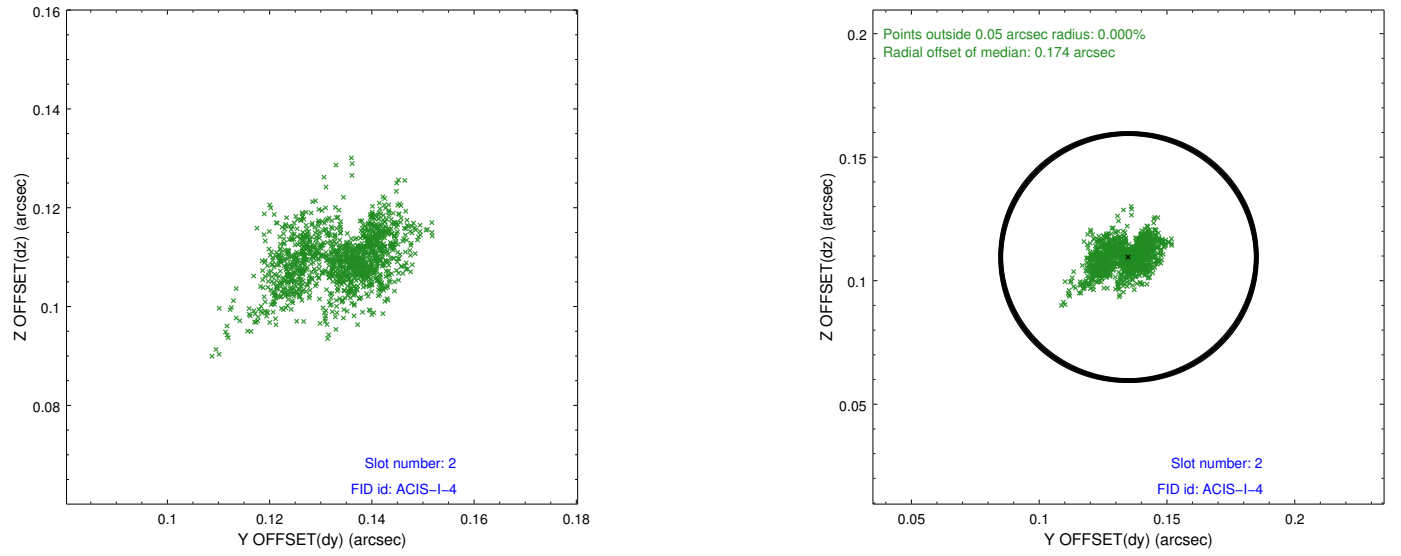
2.5.1 Slot 0



2.5.2 Slot 1



2.5.3 Slot 2



A Summary

A.1 Status

V&V Scientist	Beth Sundheim
V&V Date (YYYY-MM-DD)	2012.04.22
V&V Edition	1
V&V Disposition and Status	OK
V&V Charge Time	4.64955898

A.2 Comments