

V&V Reference Report

L2 ASCDS Version : 8.4.5

Observation 768 - L2 Version 4
Chandra X-Ray Center

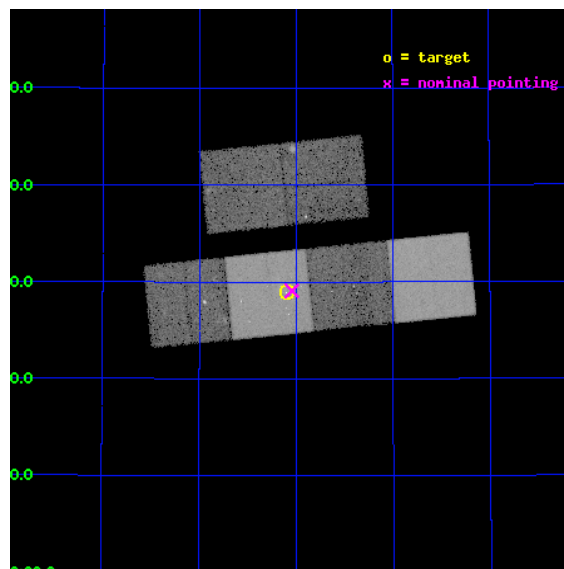
L2 Processing Date : Aug 24 2012

Contents

1	Front	2
2	OBI	3
2.1	OBI	3
2.1.1	Images	3
2.1.2	Bias	3
2.1.3	Parameters	4
2.1.4	Events	4
2.2	Compared Parameters	5
2.3	Aspect	6
2.4	Star Slots	9
2.4.1	Slot 3	9
2.4.2	Slot 4	10
2.4.3	Slot 5	11
2.4.4	Slot 6	12
2.4.5	Slot 7	13
2.5	FID Slots	14
2.5.1	Slot 0	14
2.5.2	Slot 1	15
2.5.3	Slot 2	16
A	Summary	17
A.1	Status	17
A.2	Comments	17

1 Front

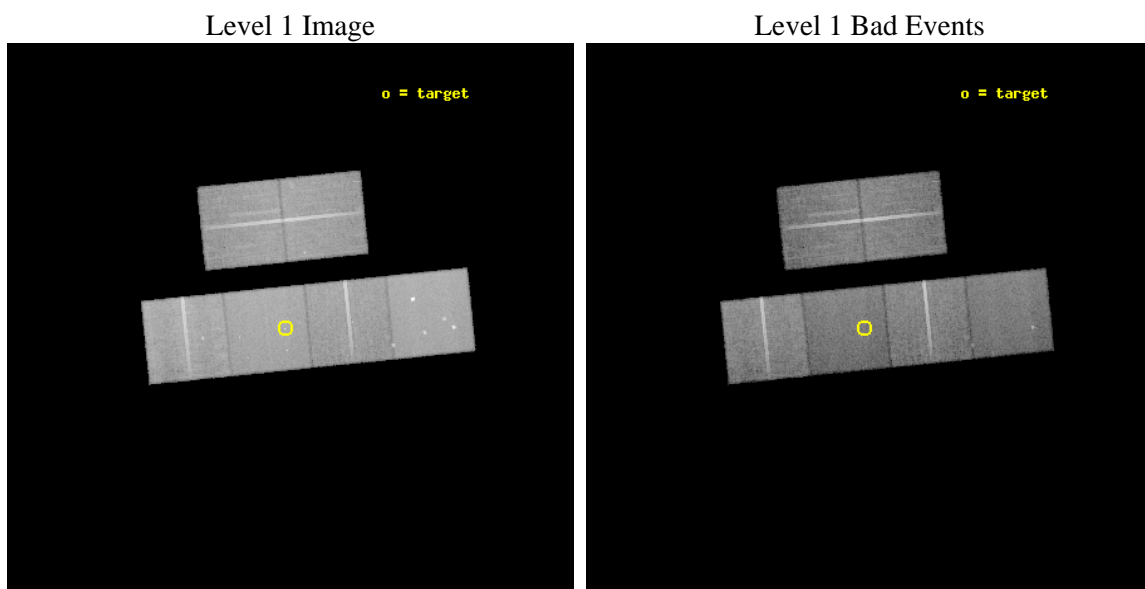
seq_num	500064	Sequence number
obs_id	768	Observation id
title	PROMPT AXAF OBSERVATIONS OF NEARBY SUPERNOVAE	Proposal title
observer	Prof. Walter Lewin	Principal investigator
object	SN1998S	Source name
dtcycle	0	
cycle	P	events from which exps? Prim/Second/Both
ra_targ	176.52546	Observer's specified target RA [deg]
dec_targ	47.482167	Observer's specified target Dec [deg]
ra_nom	176.51119108662	Nominal RA [deg]
dec_nom	47.485027318614	Nominal Dec [deg]
roll_nom	174.16714407541	Nominal Roll [deg]
revision	4	Processing version of data
ontime	23753.496709526	Sum of GTIs [s]
livetime	23452.715631551	Livetime [s]
ontime2	23753.537749529	Sum of GTIs [s]
ontime3	23750.132589355	Sum of GTIs [s]
ontime5	23753.455639586	Sum of GTIs [s]
ontime6	23753.414599597	Sum of GTIs [s]
ontime7	23753.496709526	Sum of GTIs [s]
ontime8	23746.850489438	Sum of GTIs [s]
l2events	251581	Number of level 2 events



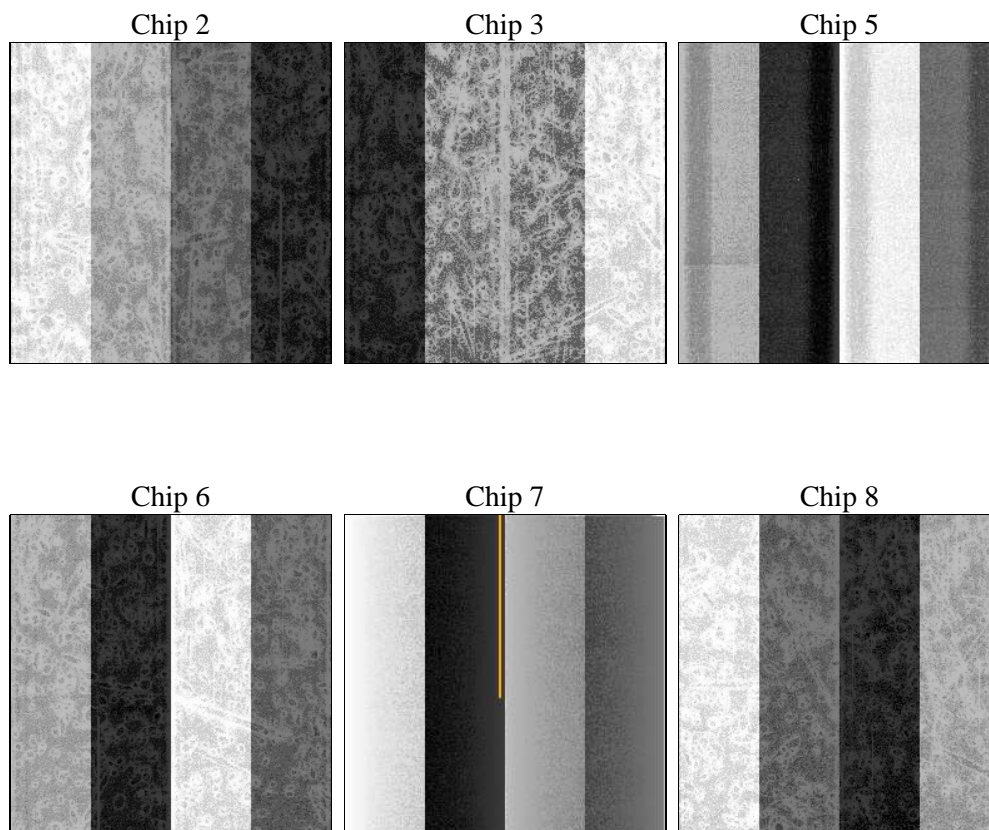
2 OBI

2.1 OBI

2.1.1 Images



2.1.2 Bias



2.1.3 Parameters

obi_num	0	Obi number	sched_exp_time	24000.000000	[s] Scheduled observation exposure time
ascdsver	8.4.5	Processing system revision	ontime	23753.496709526	Sum of GTIs [s]
caldsver	4.5.1.1	 	ontime2	23753.537749529	Sum of GTIs [s]
date	2012-08-24T04:33:43	Date and time of file creation	ontime3	23750.132589355	Sum of GTIs [s]
revision	4	Processing version of data	ontime5	23753.455639586	Sum of GTIs [s]
			ontime6	23753.414599597	Sum of GTIs [s]
			ontime7	23753.496709526	Sum of GTIs [s]
			ontime8	23746.850489438	Sum of GTIs [s]
			l1events	1205072	Number of level 1 events

2.1.4 Events

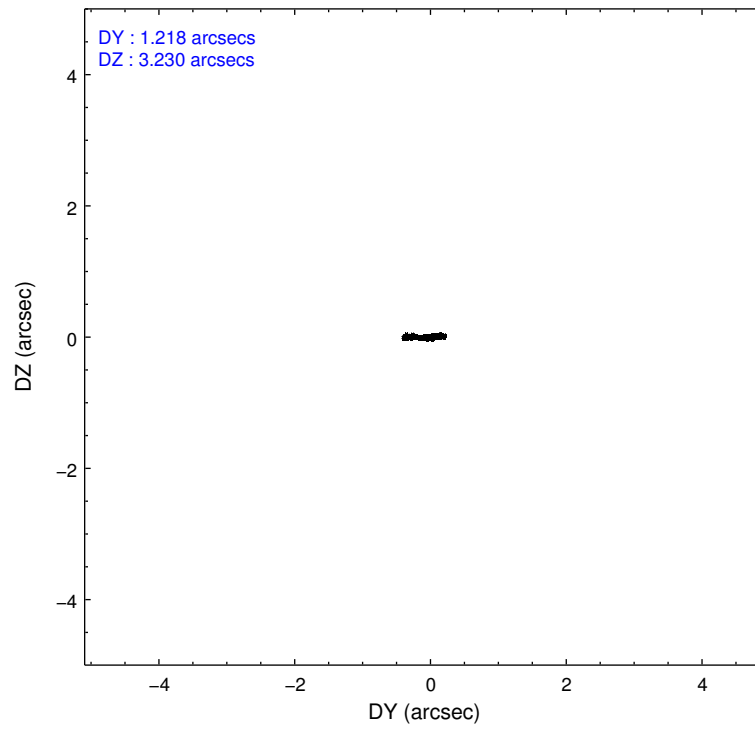
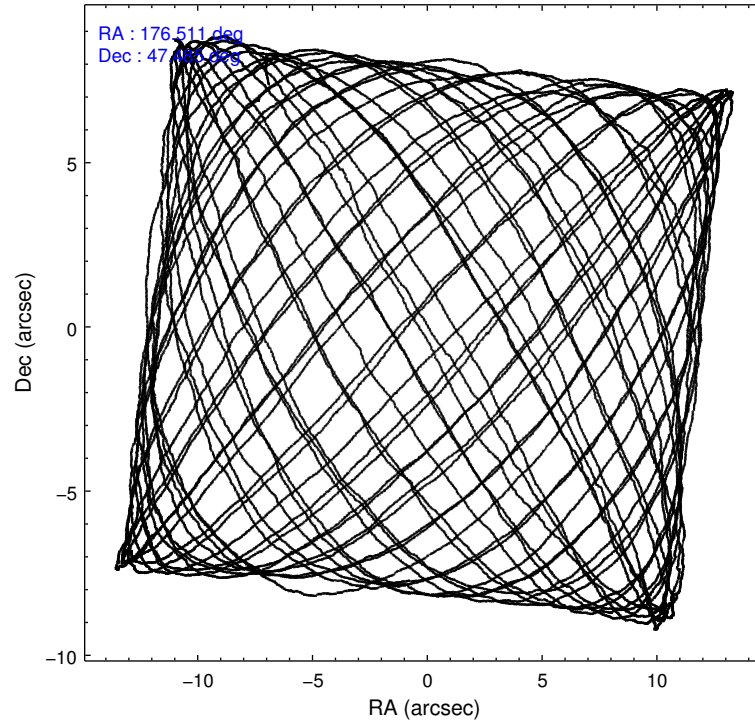
	ccd 2	ccd 3	ccd 5	ccd 6	ccd 7	ccd 8		ccd 2	ccd 3	ccd 5	ccd 6	ccd 7	ccd 8
level 1 events	184743	174339	232431	180245	207273	226041	grade 0 events	8026	7844	16409	7702	9415	14196
rejected events	166046	156130	121408	161447	117587	183283		4%	4%	7%	4%	4%	6%
rejected %	89%	89%	52%	89%	56%	81%	grade 1 events	108	76	398	72	196	138
								0%	0%	0%	0%	0%	0%
							grade 2 events	3922	3536	31319	3676	17921	8699
								2%	2%	13%	2%	8%	3%
							grade 3 events	1844	1857	4787	1938	8312	4719
								0%	1%	2%	1%	4%	2%
							grade 4 events	1779	1883	4495	1899	8333	4377
								0%	1%	1%	1%	4%	1%
							grade 5 events	5290	5698	17716	6568	19770	7939
								2%	3%	7%	3%	9%	3%
							grade 6 events	3130	3097	54044	3586	45726	10790
								1%	1%	23%	1%	22%	4%
							grade 7 events	160644	150348	103263	154804	97600	175183
								86%	86%	44%	85%	47%	77%

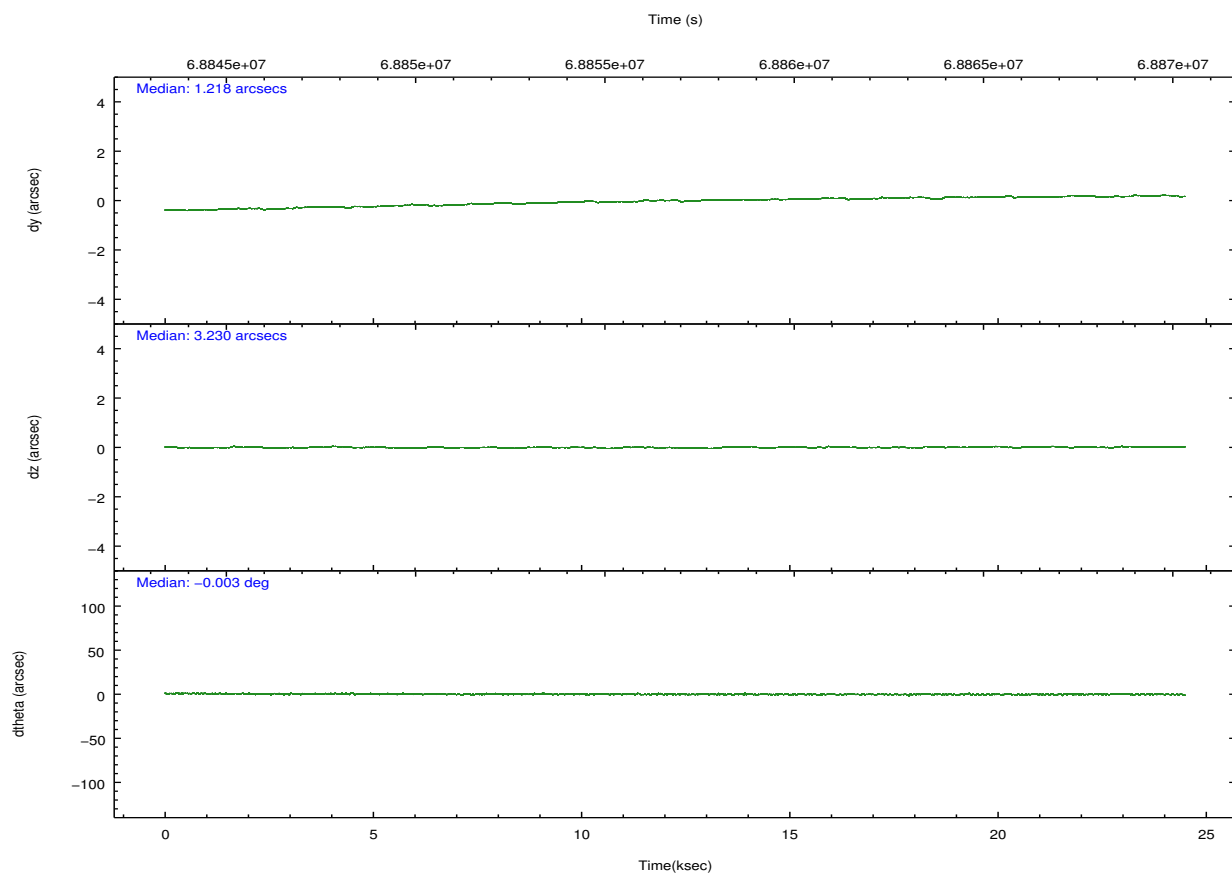
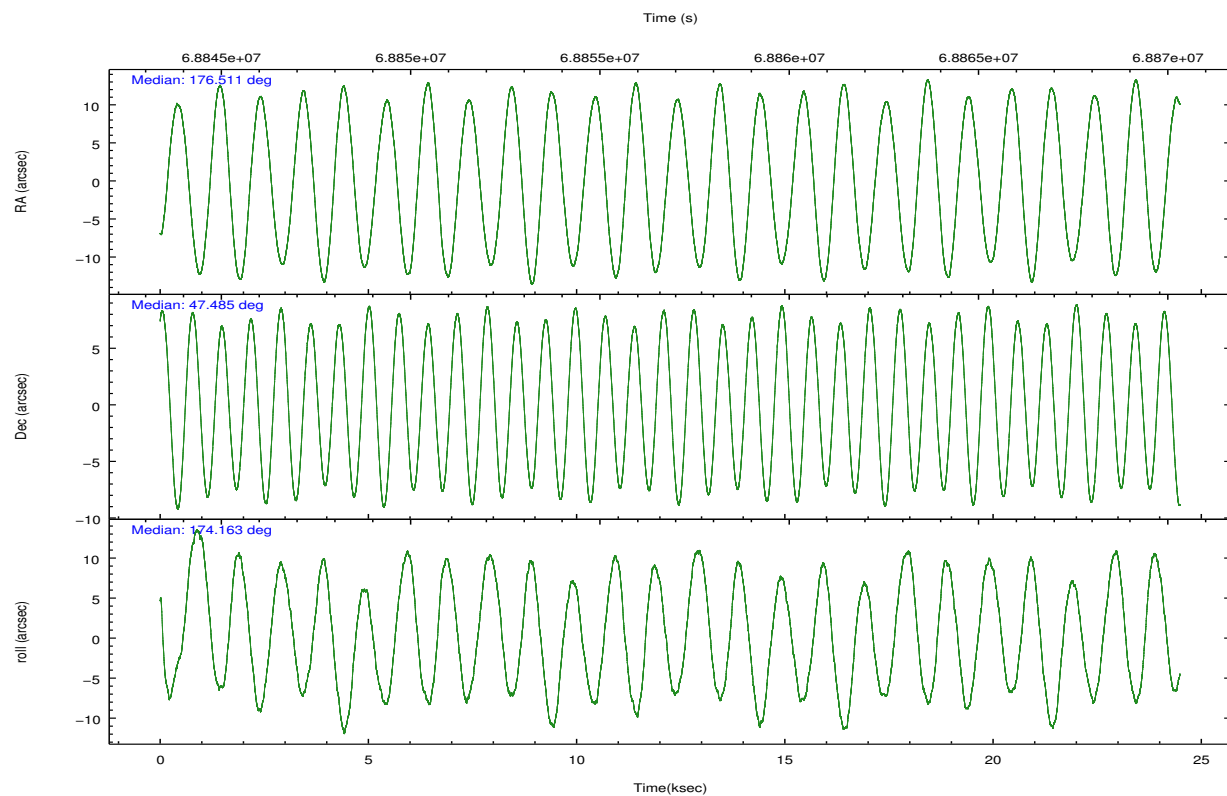
2.2 Compared Parameters

Parameter	Planned	Actual
Instrument	ACIS	ACIS
Detector	ACIS-235678	ACIS-235678
Grating	NONE	NONE
Data mode	FAINT	FAINT
Observation mode	POINTING	POINTING
[deg] Pointing RA	176.548249	176.5111910866232
[deg] Pointing Dec	47.496300	47.48502731861446
[deg] Pointing Roll	173.983197	174.167144075407
[s] Window start time (MET)	68428864.184000	68428864.184000
[s] Window stop time (MET)	69292864.184000	69292864.184000
[mm] SIM focus pos	-0.684267	-0.6828225247311905
[mm] SIM defocus	0	0.001444936568705701
[mm] SIM translation stage pos	-190.132523	-190.1400660498719
[mm] SIM translation stage offset	0	0.00754346686406393
[s] Observation start time (MET)	68845095.184000	68844148.836895
Observation start date	2000-03-07T19:37:11	2000-03-07T19:22:28
[s] Observation end time (MET)	68869095.184000	68869451.987819
Observation end date	2000-03-08T02:17:11	2000-03-08T02:24:11
Read mode	TIMED	TIMED

Parameter	Planned	Actual
Obspar format version number	7	7
Obspar file type	PREDICTED	ACTUAL
Obspar update status	NONE	UPDATED
Number of optional ACIS chips dropped	0	0
On-chip summing requested	N	N
Subarray requested	NONE	NONE
Alternating exposures requested	N	N
[s] Primary exposure time	0.000000	3.2

2.3 Aspect



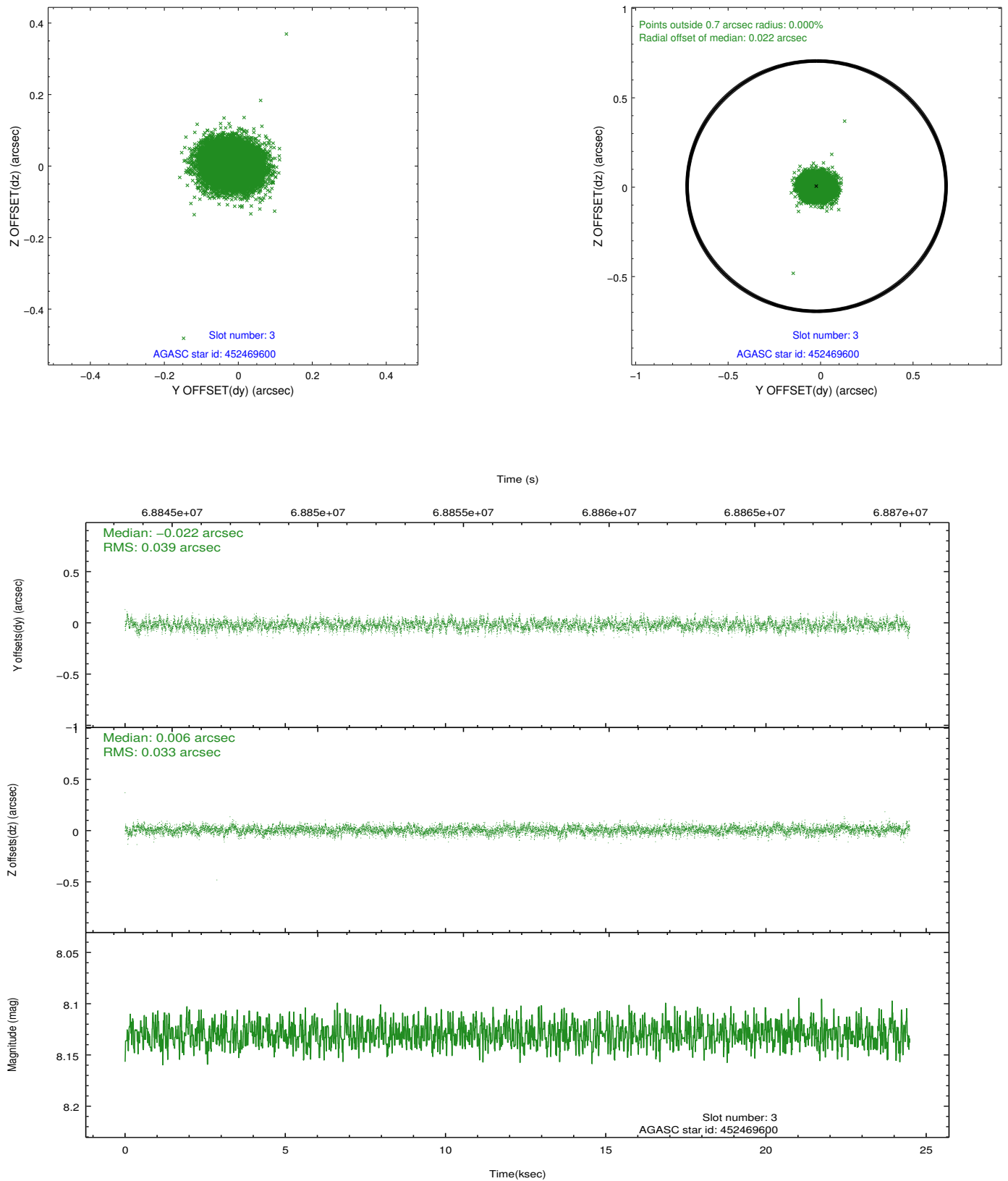


Slot Statistics

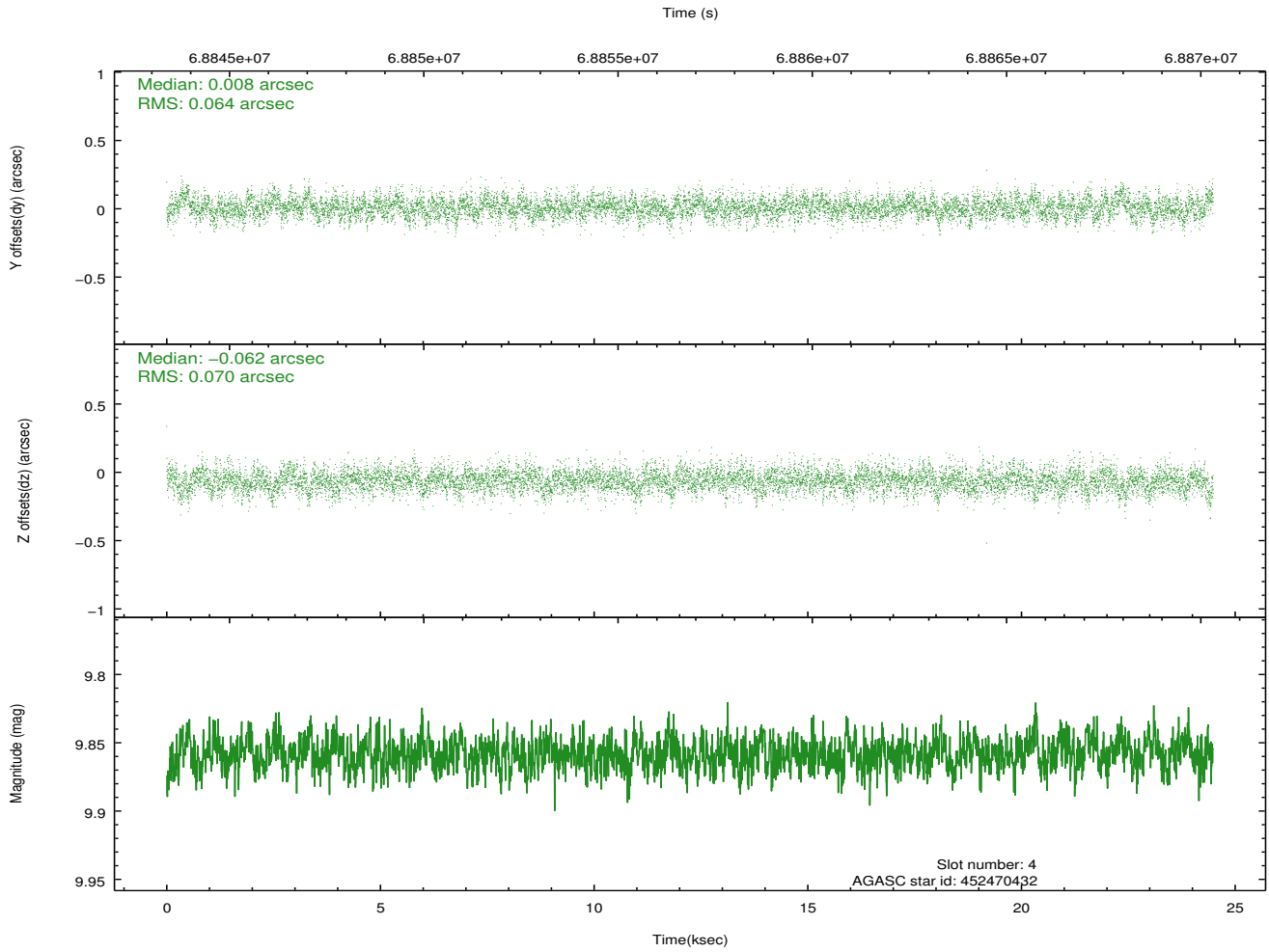
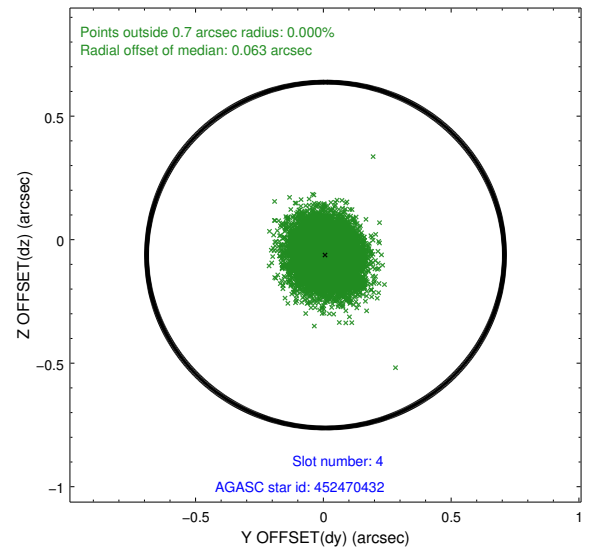
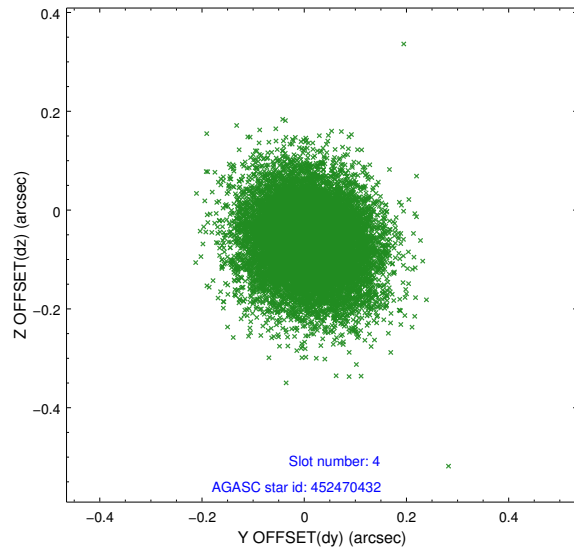
slot	status	id	mag	n_pts	med_dy	med_dz	dr1	dr2	ra	dec	mean_y	mean_z
0	FID	ACIS-S-2	7.12	5973	-0.001	-0.014	0.006	0.011	0.000000	0.000000	-753.82	-1724.29
1	FID	ACIS-S-4	7.21	5971	-0.004	0.004	0.007	0.013	0.000000	0.000000	2159.45	184.01
2	FID	ACIS-S-5	7.24	5971	-0.026	0.018	0.008	0.014	0.000000	0.000000	-1806.47	177.94
3	GUIDE	452469600	8.13	11939	-0.022	0.006	0.054	0.088	176.377116	47.666878	477.10	-567.83
4	GUIDE	452470432	9.86	11939	0.008	-0.062	0.100	0.164	176.712094	47.890435	-244.45	-1453.33
5	GUIDE	452466128	10.21	11933	0.038	-0.034	0.135	0.221	177.327482	47.076111	-2057.62	1294.07
6	GUIDE	452469288	9.96	11937	0.005	0.068	0.102	0.165	176.480832	47.547282	181.99	-165.49
7	GUIDE	452469800	10.64	11927	-0.030	0.018	0.138	0.224	176.803924	47.787510	-505.00	-1108.72

2.4 Star Slots

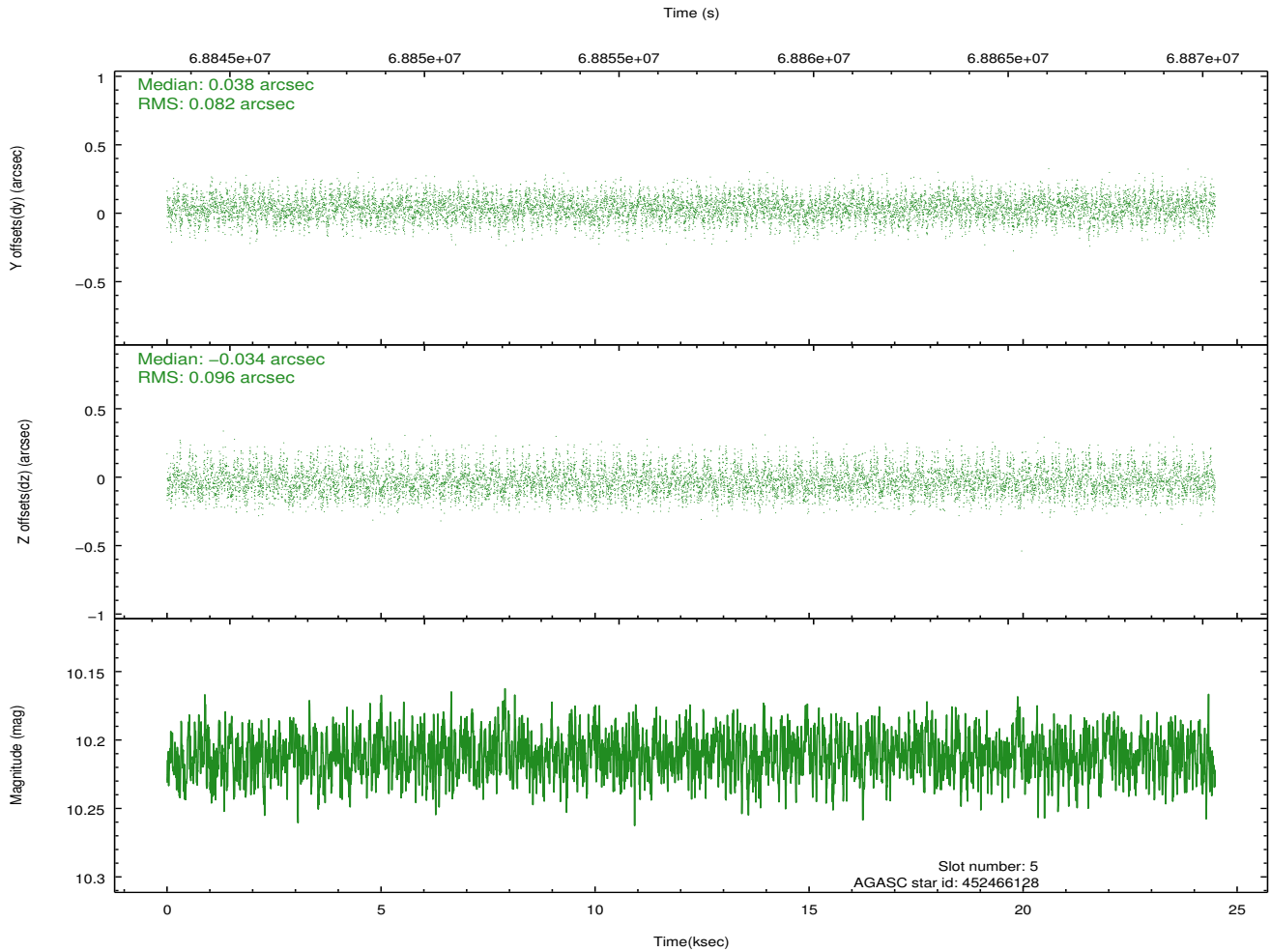
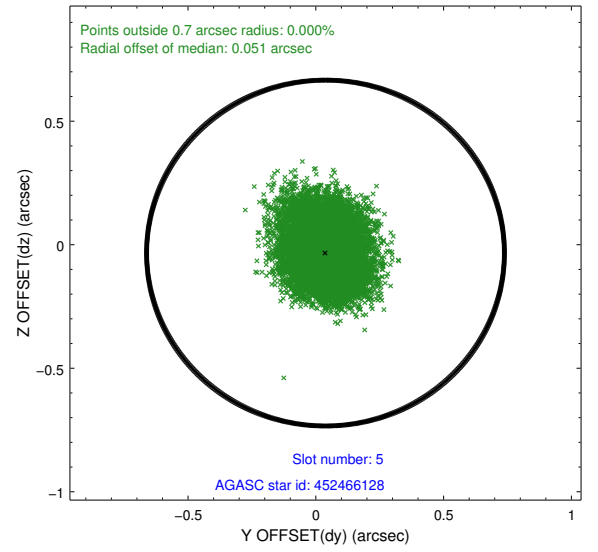
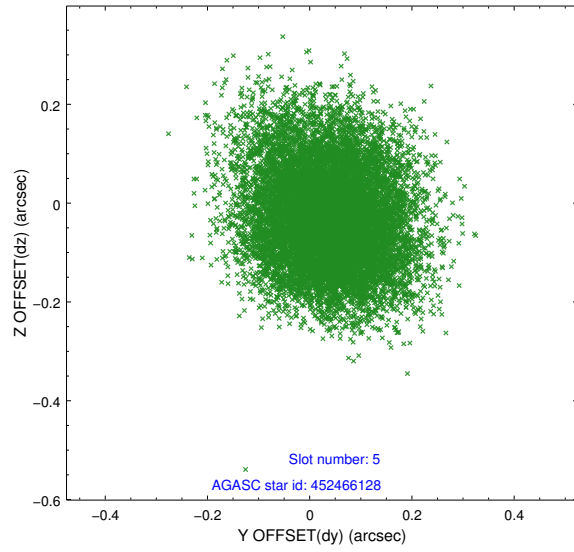
2.4.1 Slot 3



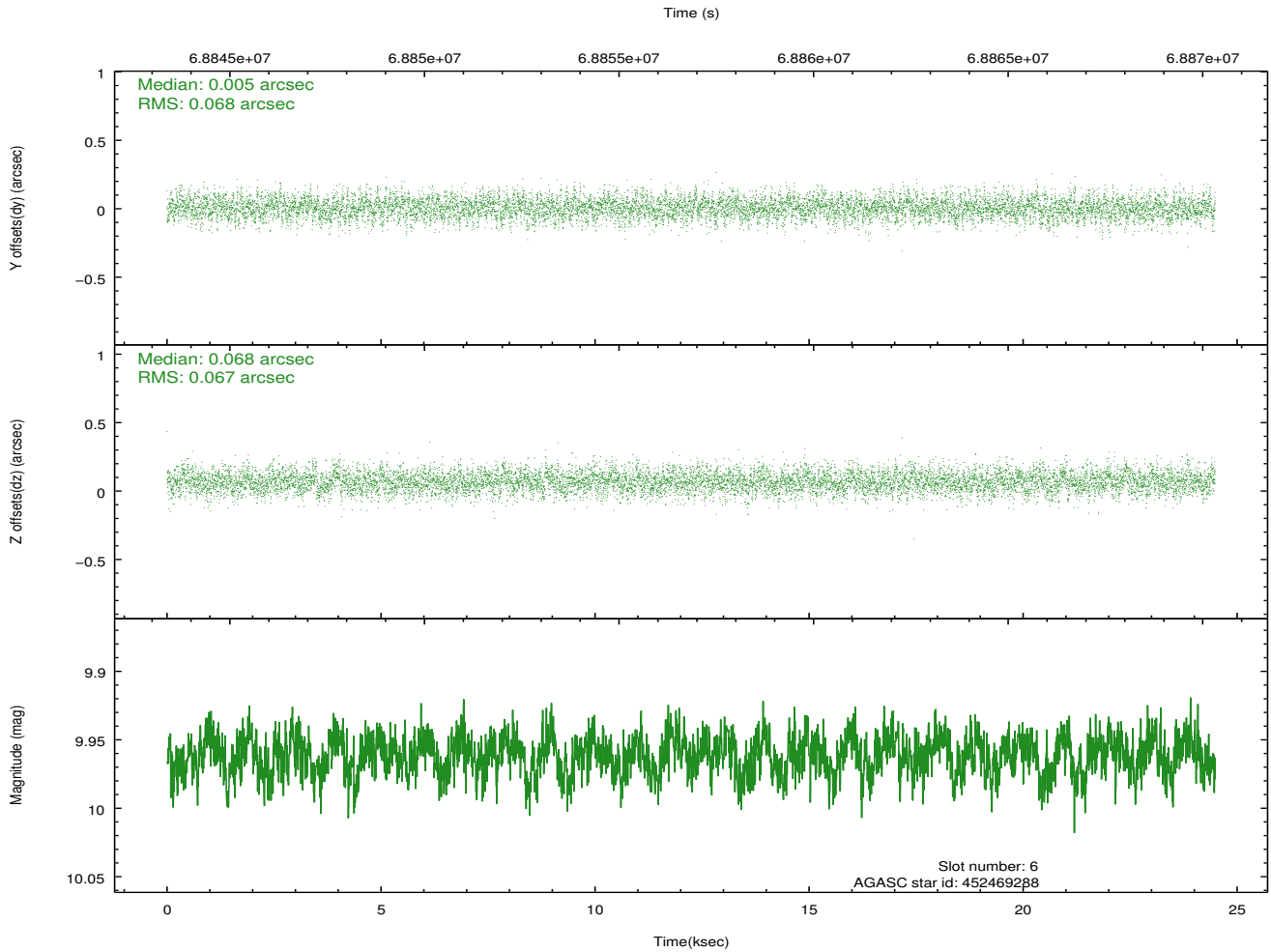
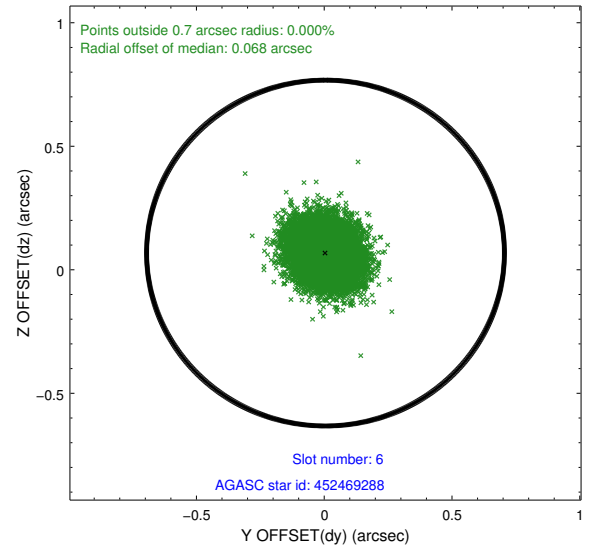
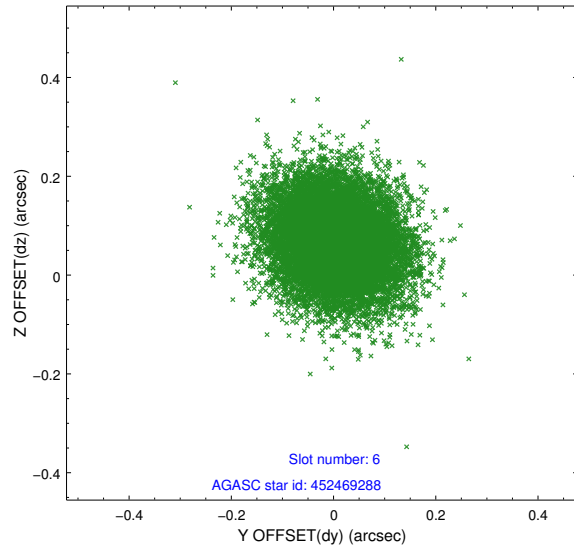
2.4.2 Slot 4



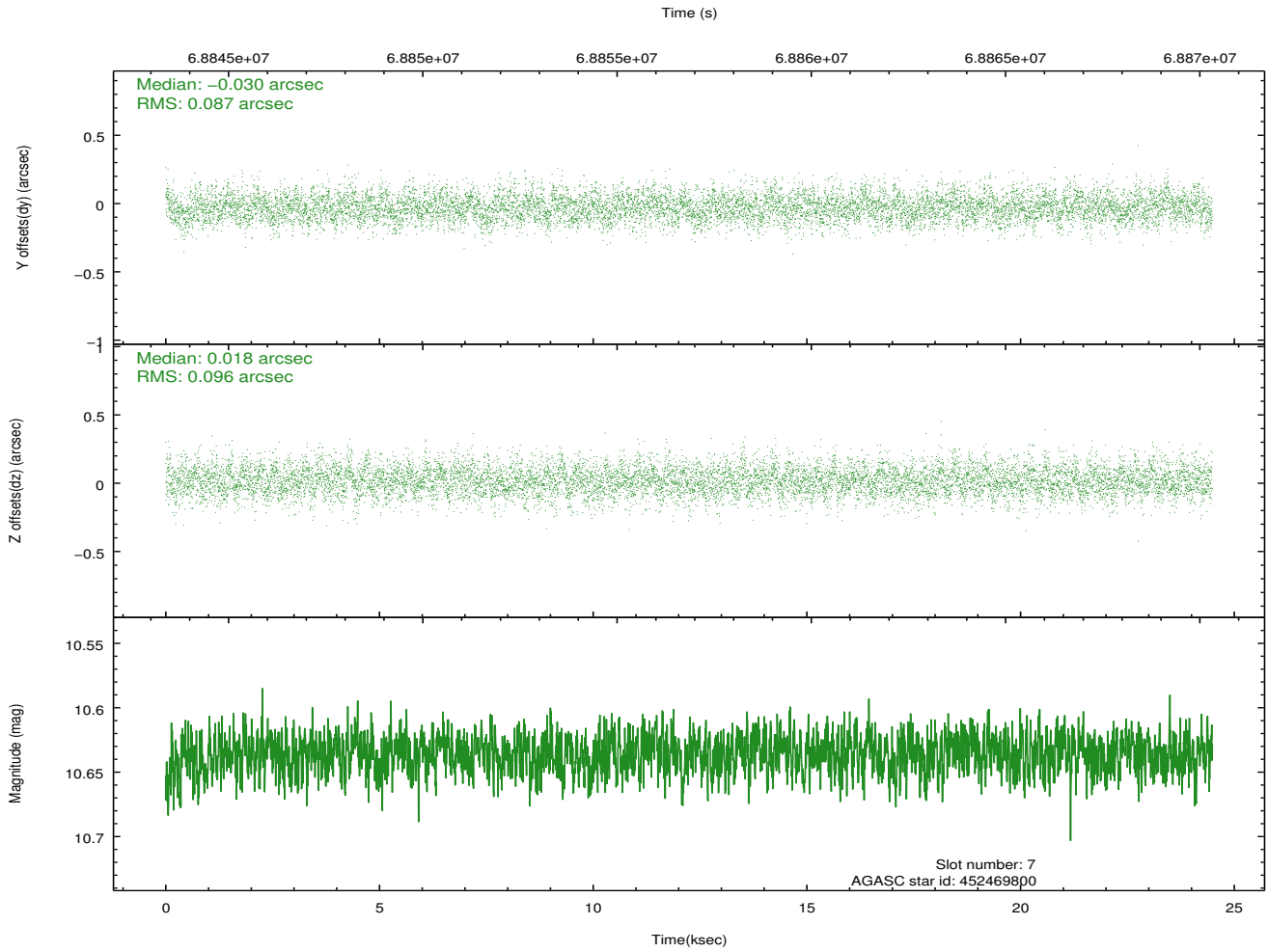
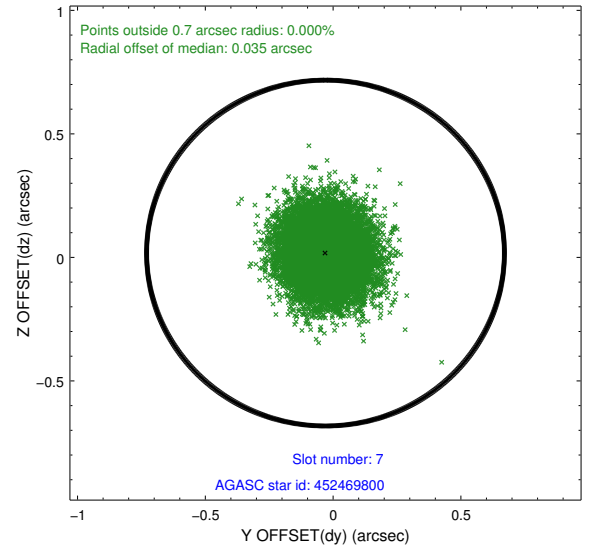
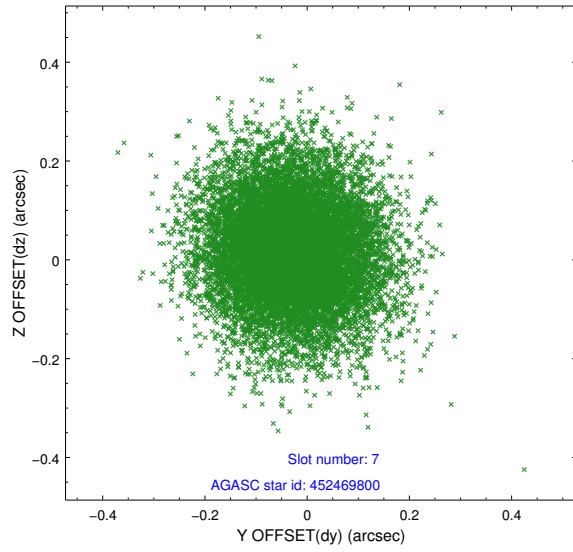
2.4.3 Slot 5



2.4.4 Slot 6

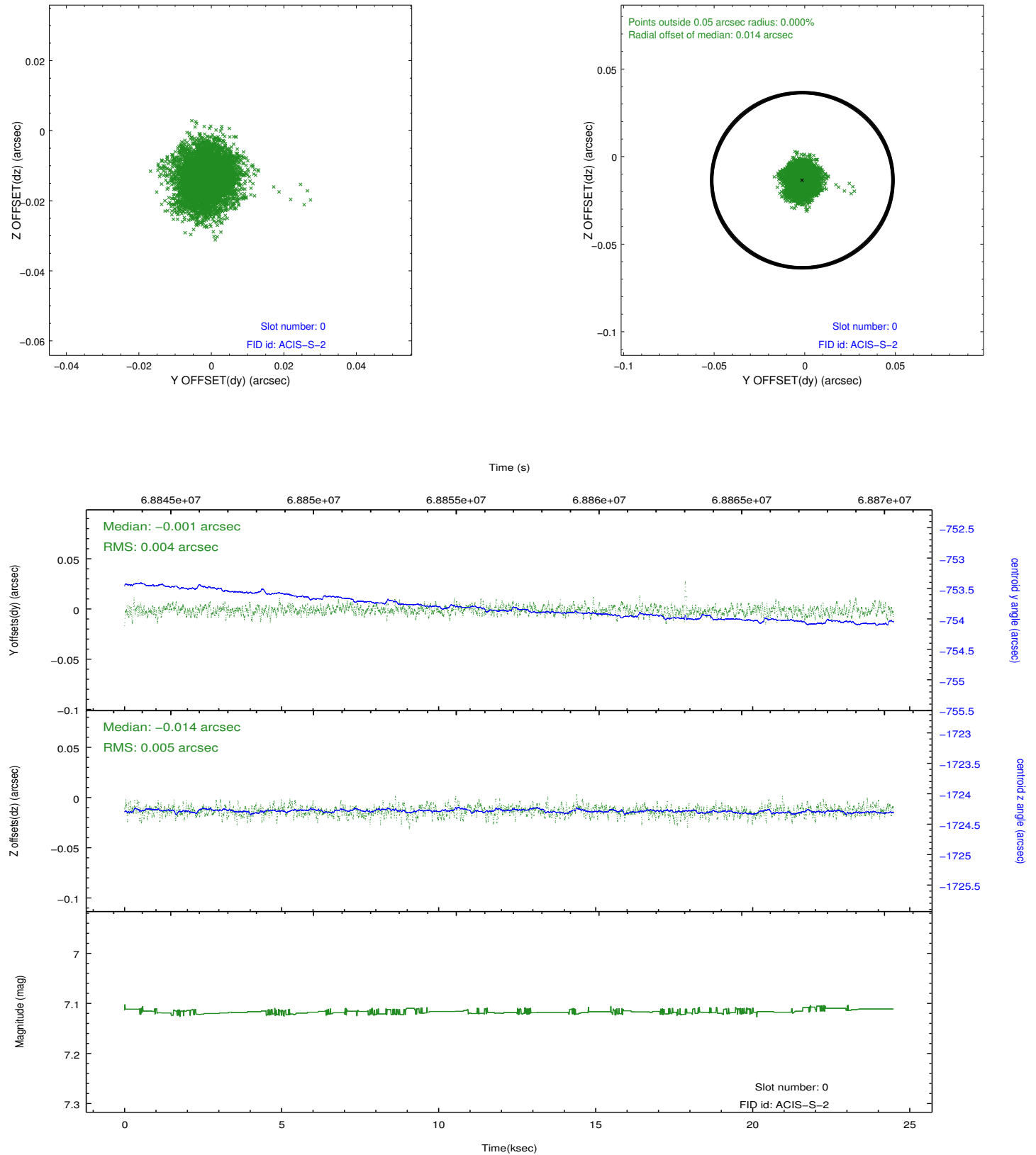


2.4.5 Slot 7

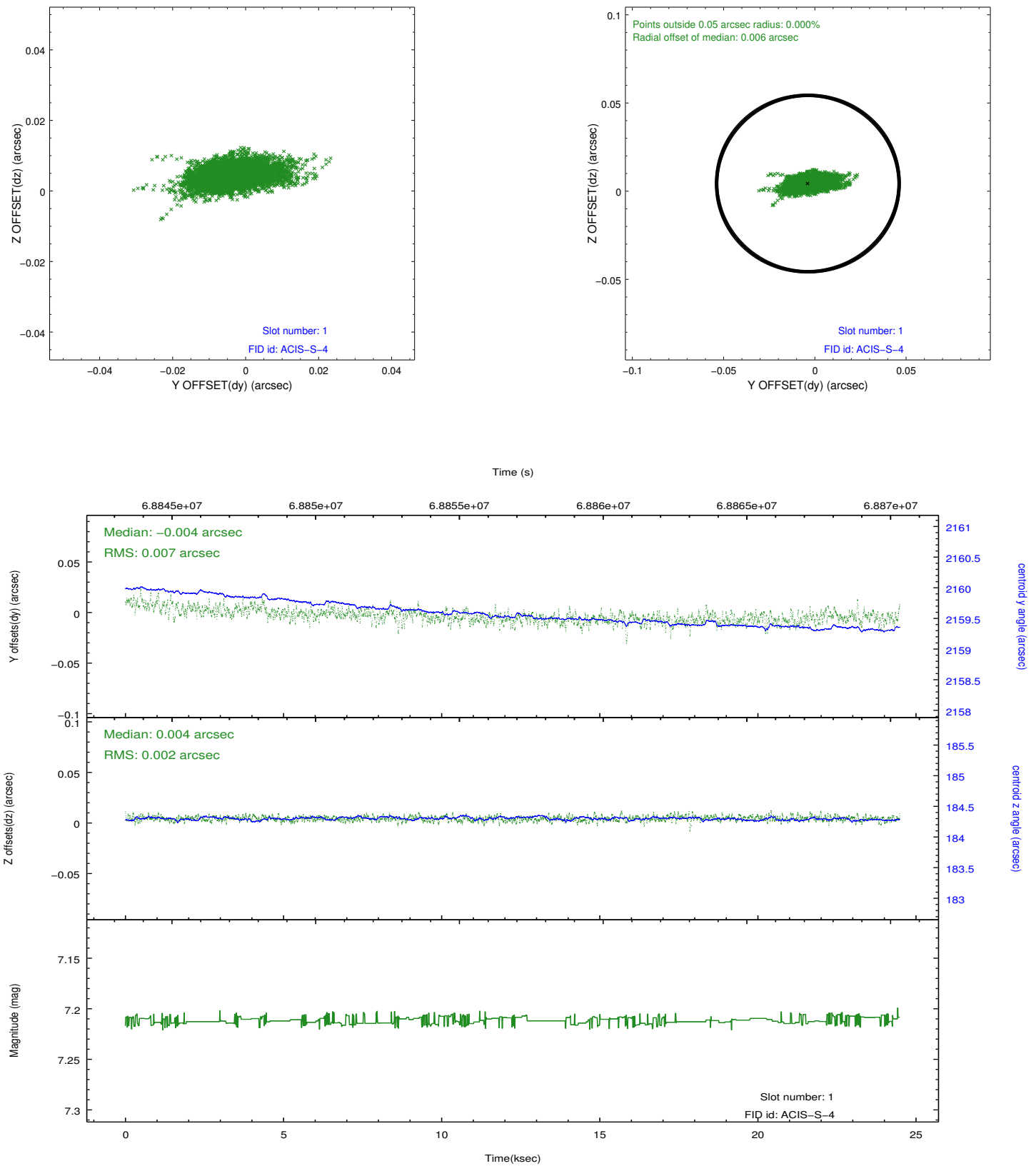


2.5 FID Slots

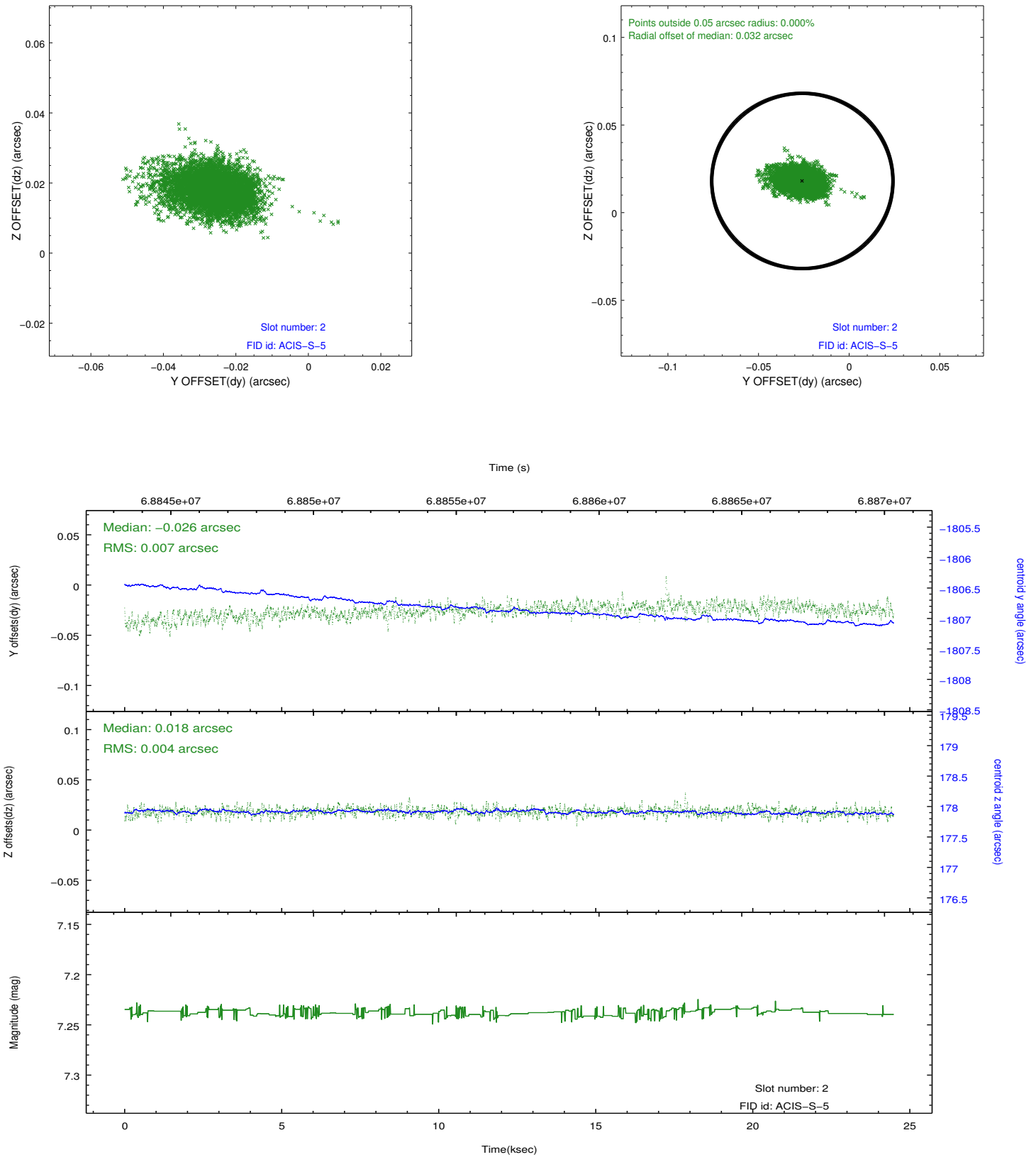
2.5.1 Slot 0



2.5.2 Slot 1



2.5.3 Slot 2



A Summary

A.1 Status

V&V Scientist	Jen Lauer
V&V Date (YYYY-MM-DD)	2012.08.24
V&V Edition	1
V&V Disposition and Status	OK
V&V Charge Time	23.753

A.2 Comments

Window constraint met.