

V&V Reference Report

L2 ASCDS Version : 8.4.4

Observation 7628 - L2 Version 2
Chandra X-Ray Center

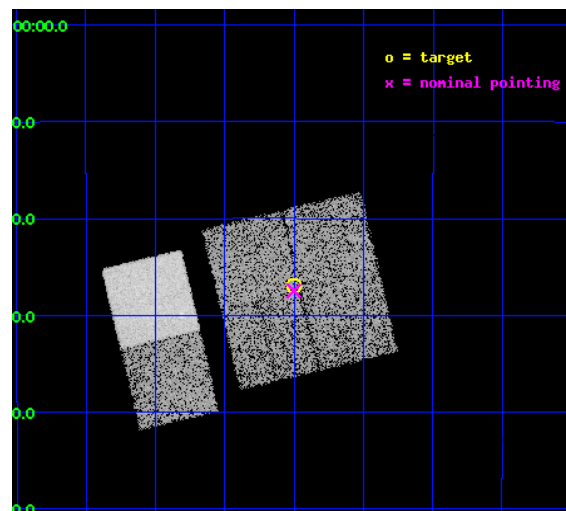
L2 Processing Date : Apr 28 2012

Contents

1	Front	2
2	OBI	3
2.1	OBI	3
2.1.1	Images	3
2.1.2	Bias	3
2.1.3	Parameters	4
2.1.4	Events	4
2.2	Compared Parameters	5
2.3	Aspect	6
2.4	Star Slots	9
2.4.1	Slot 3	9
2.4.2	Slot 4	10
2.4.3	Slot 5	11
2.4.4	Slot 6	12
2.4.5	Slot 7	13
2.5	FID Slots	14
2.5.1	Slot 0	14
2.5.2	Slot 1	15
2.5.3	Slot 2	16
A	Summary	17
A.1	Status	17
A.2	Comments	17

1 Front

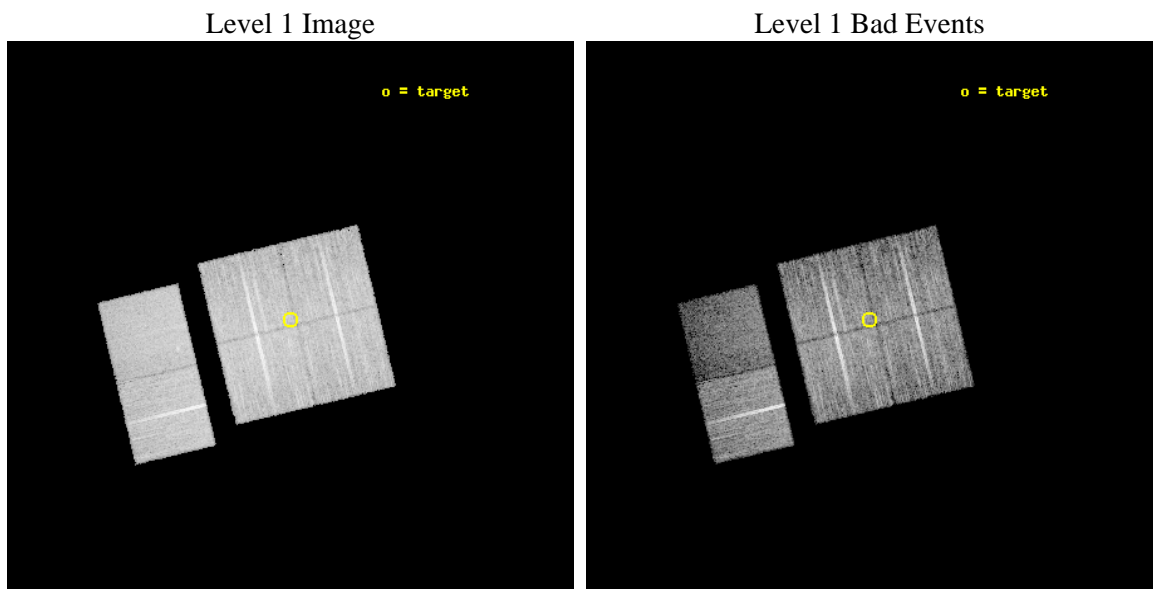
seq_num	500757	Sequence number
obs_id	7628	Observation id
title	A Better Mousetrap: Localizing RRATs with Chandra	Proposal title
observer	Dr. Shami Chatterjee	Principal investigator
object	J1826-14	Source name
dtcycle	0	
cycle	P	events from which exps? Prim/Second/Both
ra_targ	276.5	Observer's specified target RA [deg]
dec_targ	-14.45	Observer's specified target Dec [deg]
ra_nom	276.50056508202	Nominal RA [deg]
dec_nom	-14.458049606835	Nominal Dec [deg]
roll_nom	256.52487200336	Nominal Roll [deg]
revision	2	Processing version of data
ontime	10041.599962652	Sum of GTIs [s]
livetime	9914.447177599	Livetime [s]
ontime0	10041.599962652	Sum of GTIs [s]
ontime1	10041.599962652	Sum of GTIs [s]
ontime2	10041.599962652	Sum of GTIs [s]
ontime3	10041.599962652	Sum of GTIs [s]
ontime6	10041.599962652	Sum of GTIs [s]
ontime7	10041.599962652	Sum of GTIs [s]
l2events	66673	Number of level 2 events



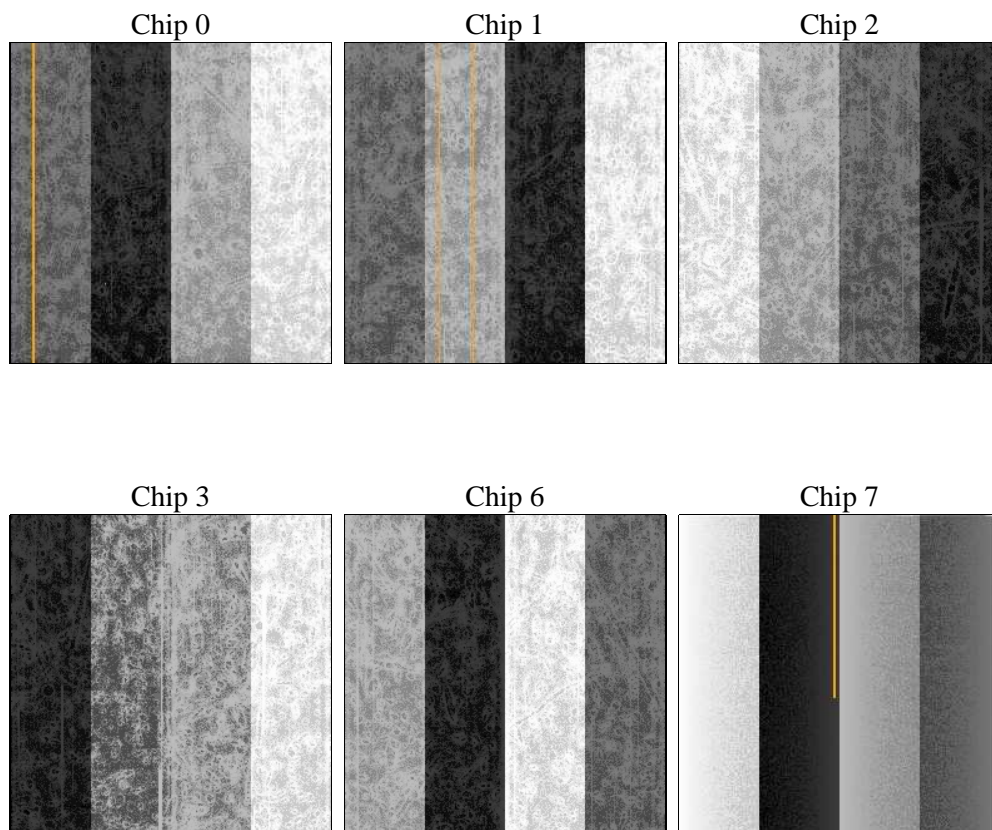
2 OBI

2.1 OBI

2.1.1 Images



2.1.2 Bias



2.1.3 Parameters

obi_num	0	Obi number	sched_exp_time	10000.000000	[s] Scheduled observation exposure time
ascdsver	8.4.4	Processing system revision	ontime	10041.599962652	Sum of GTIs [s]
caldsver	4.4.9	 	ontime0	10041.599962652	Sum of GTIs [s]
date	2012-04-28T14:40:00	Date and time of file creation	ontime1	10041.599962652	Sum of GTIs [s]
revision	2	Processing version of data	ontime2	10041.599962652	Sum of GTIs [s]
			ontime3	10041.599962652	Sum of GTIs [s]
			ontime6	10041.599962652	Sum of GTIs [s]
			ontime7	10041.599962652	Sum of GTIs [s]
			l1events	454403	Number of level 1 events

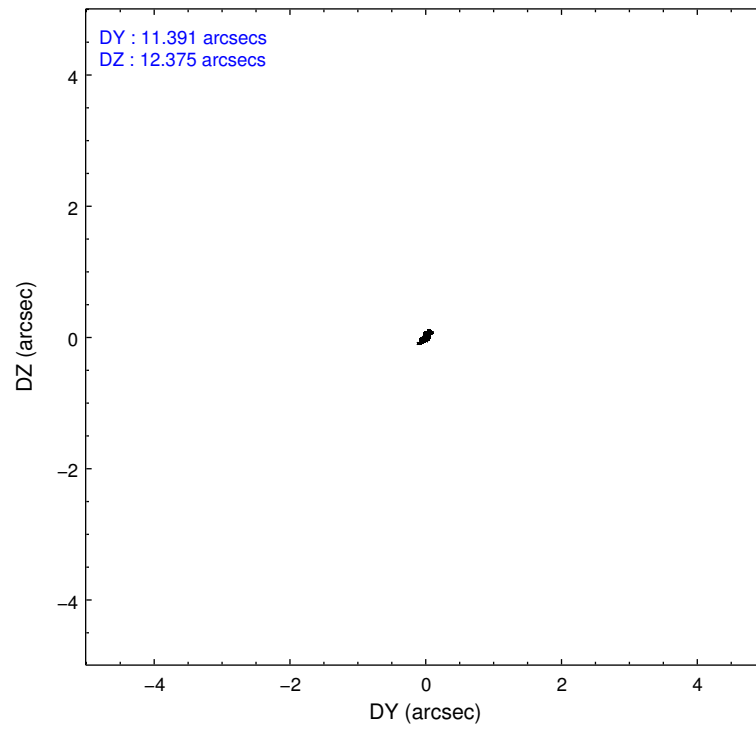
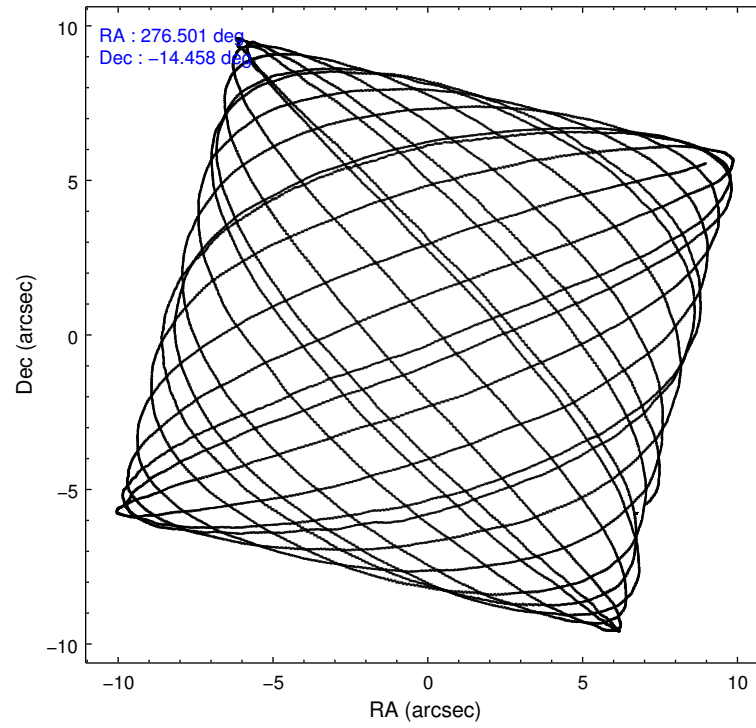
2.1.4 Events

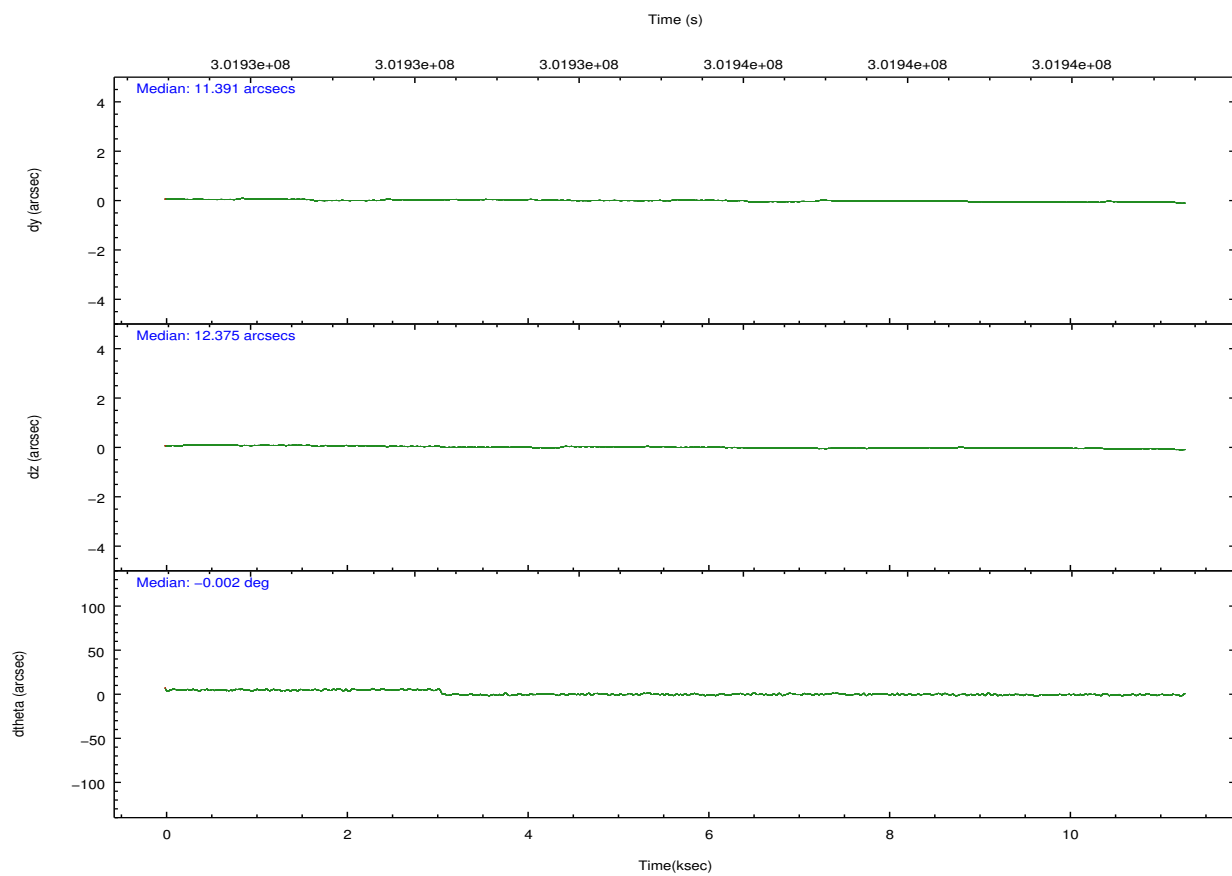
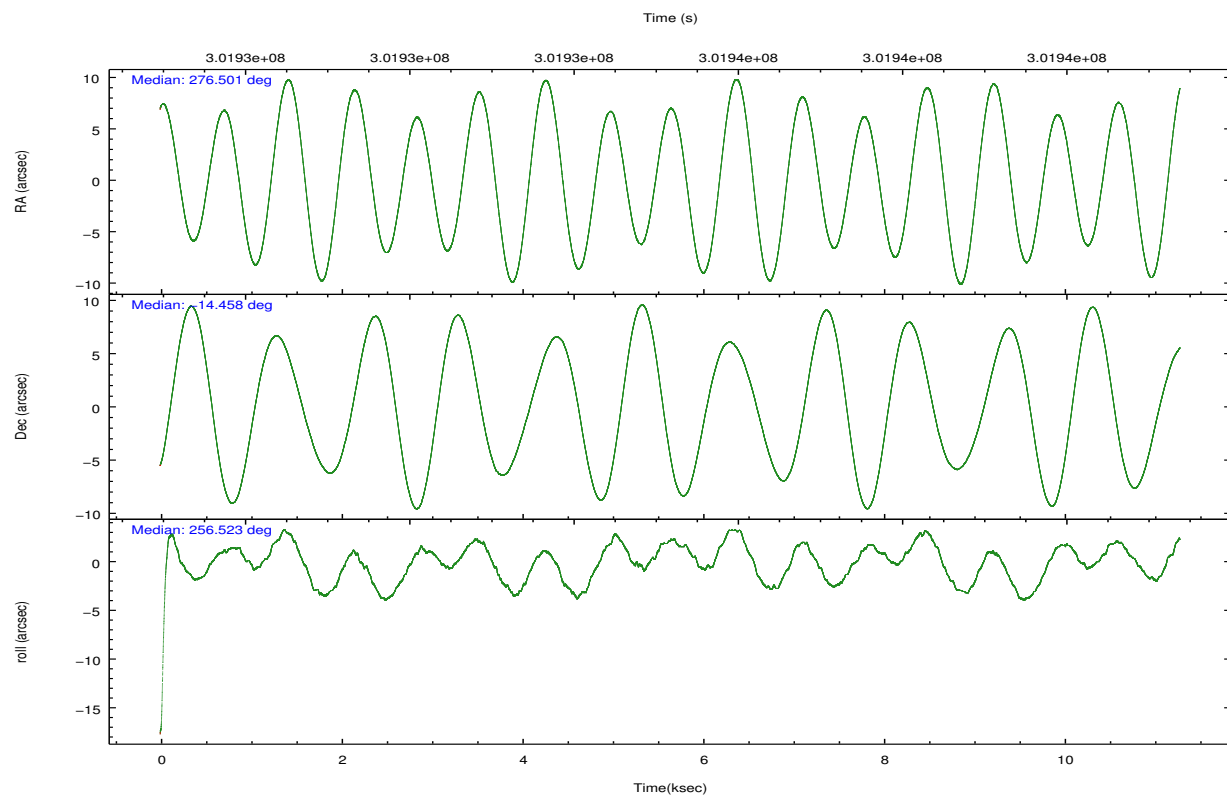
	ccd 0	ccd 1	ccd 2	ccd 3	ccd 6	ccd 7		ccd 0	ccd 1	ccd 2	ccd 3	ccd 6	ccd 7
level 1 events	72571	69921	83943	75796	79837	72335	grade 0 events	3079	2958	3004	3079	3159	3849
rejected events	64933	61851	76595	68326	71691	36724		4%	4%	3%	4%	3%	5%
rejected %	89%	88%	91%	90%	89%	50%	grade 1 events	44	45	46	58	44	101
								0%	0%	0%	0%	0%	0%
							grade 2 events	1673	1780	1665	1495	1688	7447
								2%	2%	1%	1%	2%	10%
							grade 3 events	856	878	721	811	807	3367
								1%	1%	0%	1%	1%	4%
							grade 4 events	724	861	764	761	859	3320
								0%	1%	0%	1%	1%	4%
							grade 5 events	2161	2365	2071	2675	2564	7534
								2%	3%	2%	3%	3%	10%
							grade 6 events	1310	1597	1195	1330	1636	17638
								1%	2%	1%	1%	2%	24%
							grade 7 events	62724	59437	74477	65587	69080	29079
								86%	85%	88%	86%	86%	40%

2.2 Compared Parameters

Parameter	Planned	Actual	Parameter	Planned	Actual
Instrument	ACIS	ACIS	Obspar format version number	7	7
Detector	ACIS-012367	ACIS-012367	Obspar file type	PREDICTED	ACTUAL
Grating	NONE	NONE	Obspar update status	NONE	UPDATED
Data mode	FAINT	FAINT	CCD I0 on	Y	Y
Observation mode	POINTING	POINTING	CCD I1 on	Y	Y
[deg] Pointing RA	276.492370	276.5005650820241	CCD I2 on	Y	Y
[deg] Pointing Dec	-14.431736	-14.45804960683507	CCD I3 on	Y	Y
[deg] Pointing Roll	256.314153	256.5248720033574	CCD S0 on	N	N
[mm] SIM focus pos	-0.782348	-0.7809083437167272	CCD S1 on	N	N
[mm] SIM defocus	0	0.001439871863259334	CCD S2 on	O1	Y
[mm] SIM translation stage pos	-233.592463	-233.5874344608287	CCD S3 on	O2	Y
[mm] SIM translation stage offset	0	-0.005018542100998502	CCD S4 on	N	N
[s] Observation start time (MET)	301930804.184000	301929250.58472	CCD S5 on	N	N
Observation start date	2007-07-27T13:38:59	2007-07-27T13:14:10	Number of optional ACIS chips dropped	0	0
[s] Observation end time (MET)	301940804.184000	301941546.48531	On-chip summing requested	N	N
Observation end date	2007-07-27T16:25:39	2007-07-27T16:39:06	Subarray requested	NONE	NONE
Read mode	TIMED	TIMED	Alternating exposures requested	N	N
			[s] Primary exposure time	0.000000	3.2

2.3 Aspect



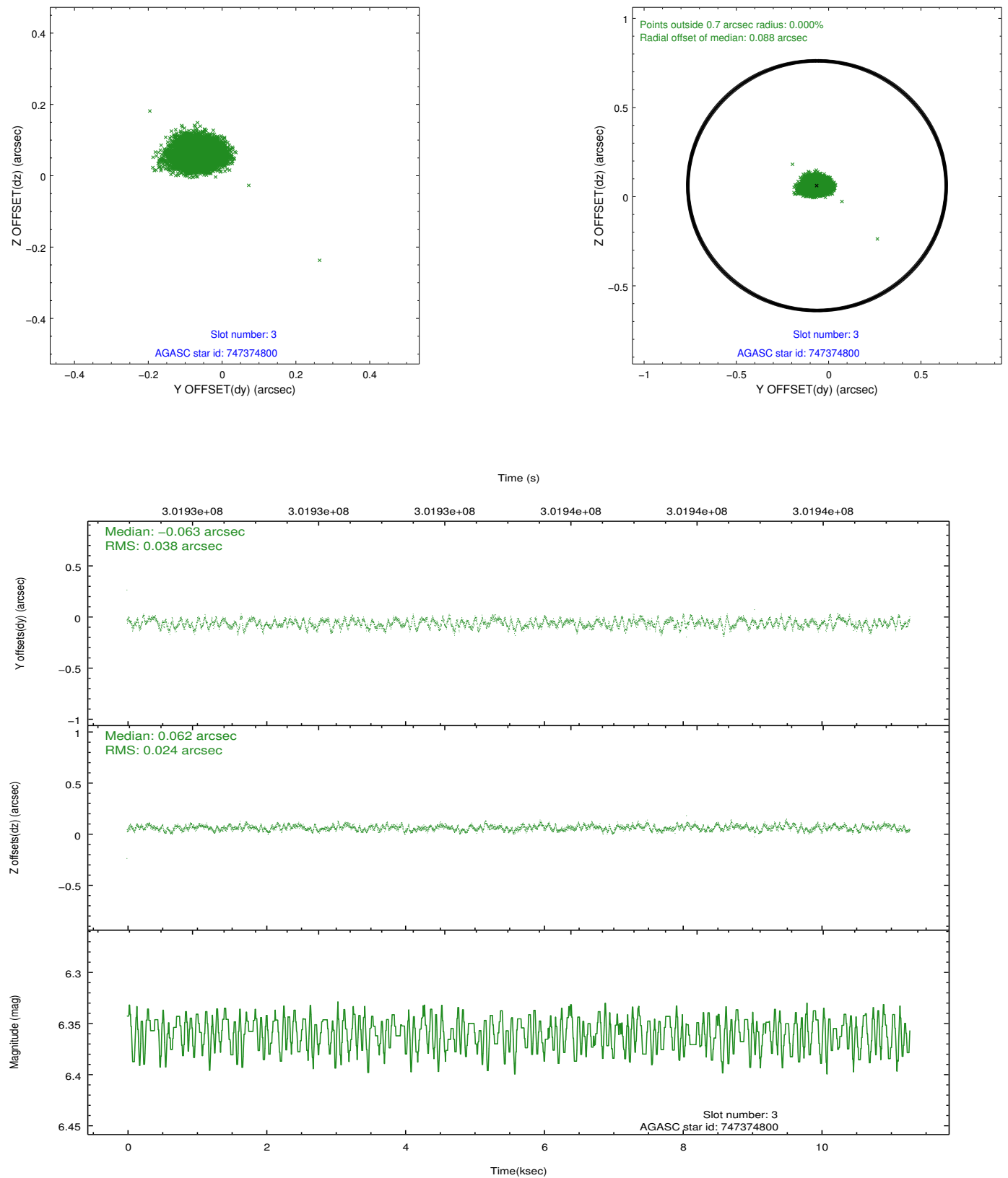


Slot Statistics

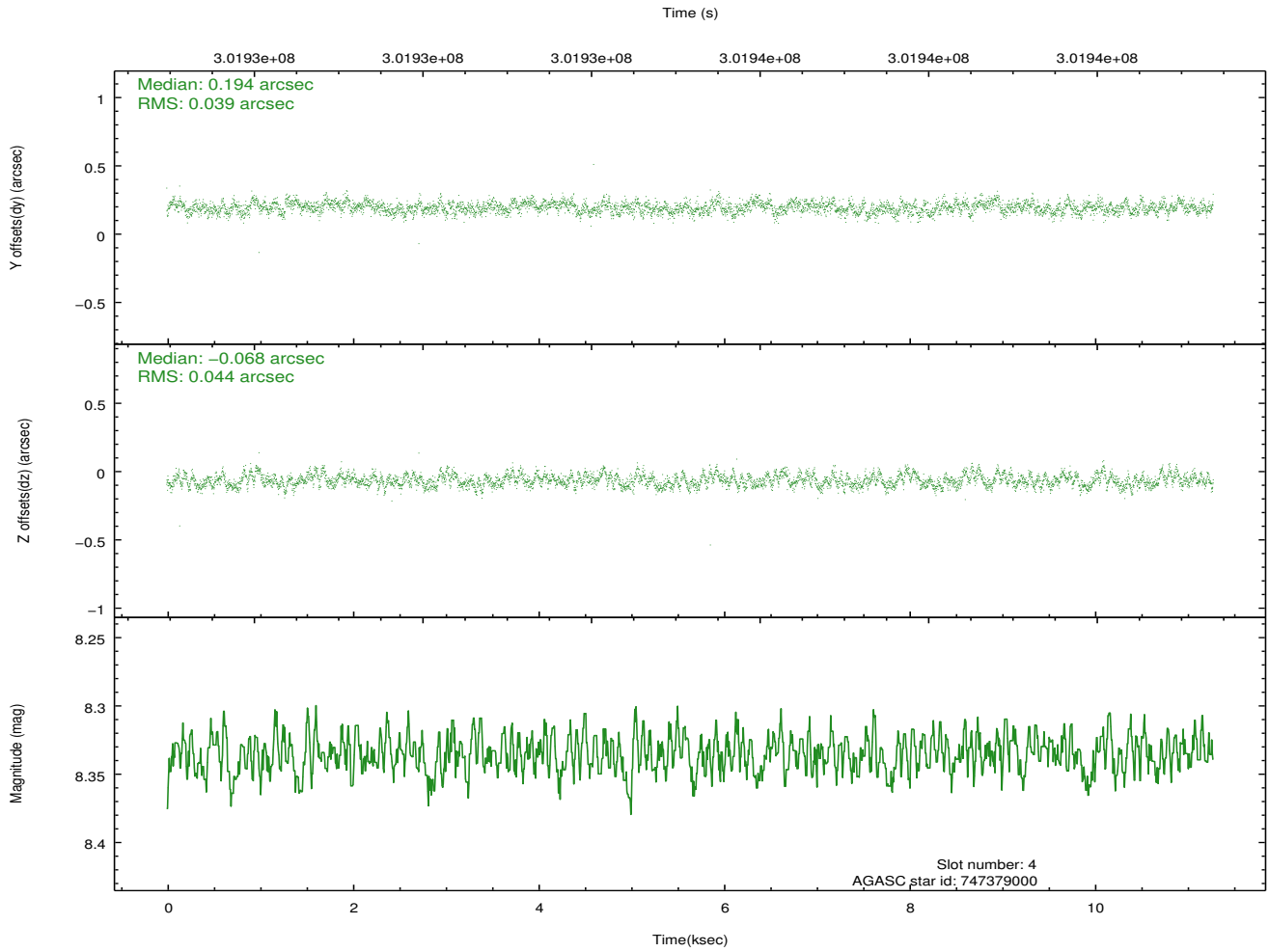
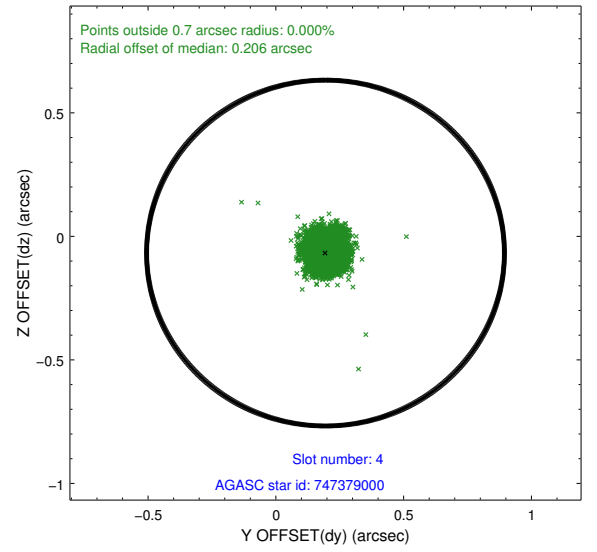
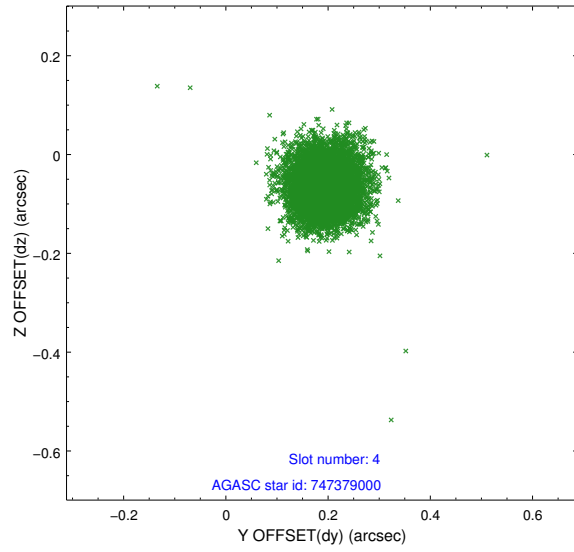
slot	status	id	mag	n_pts	med_dy	med_dz	dr1	dr2	ra	dec	mean_y	mean_z
0	FID	ACIS-I-2	7.13	2753	-0.087	-0.127	0.015	0.033	0.000000	0.000000	-766.09	-842.39
1	FID	ACIS-I-4	7.16	2753	0.208	0.088	0.011	0.019	0.000000	0.000000	2148.07	1063.73
2	FID	ACIS-I-5	7.23	2753	-0.222	0.108	0.015	0.031	0.000000	0.000000	-1819.46	1062.16
3	GUIDE	747374800	6.36	5505	-0.063	0.062	0.048	0.075	276.313309	-13.978417	-1437.05	-993.70
4	GUIDE	747379000	8.34	5503	0.194	-0.068	0.061	0.098	276.530644	-14.793436	1234.01	437.69
5	GUIDE	747388080	7.89	5504	-0.059	-0.006	0.057	0.091	276.738089	-13.854695	-2220.56	343.18
6	GUIDE	747395024	7.89	5504	-0.108	-0.062	0.056	0.091	277.013372	-14.660681	373.27	1958.68
7	GUIDE	747394680	7.45	5499	0.038	0.078	0.050	0.079	276.275759	-14.649373	940.59	-546.95

2.4 Star Slots

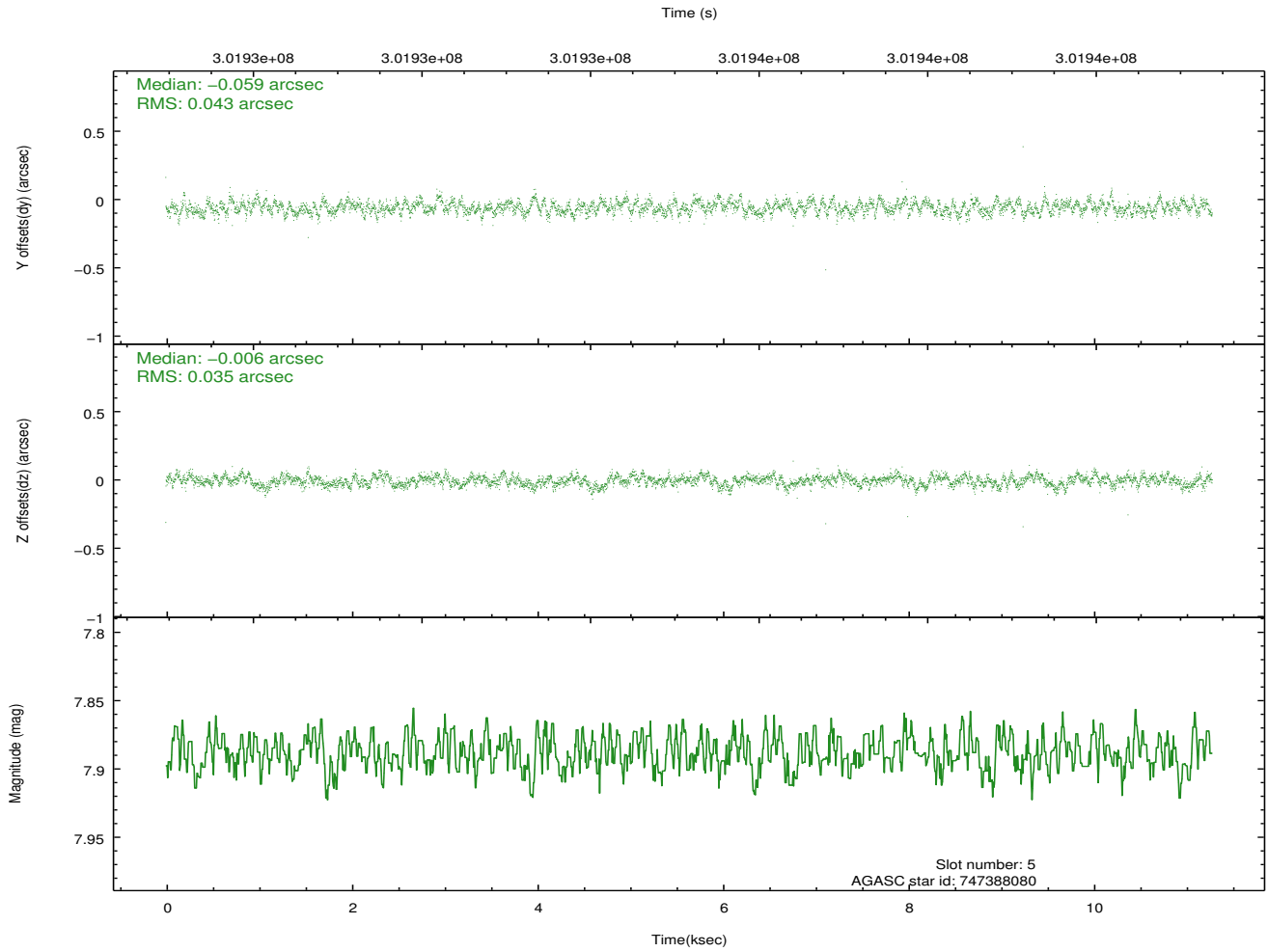
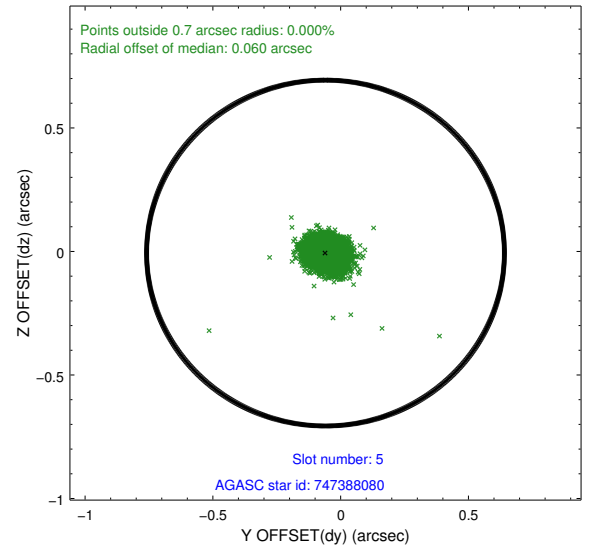
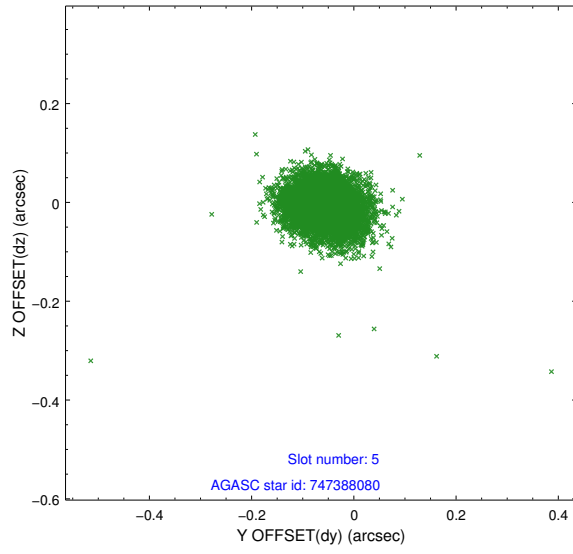
2.4.1 Slot 3



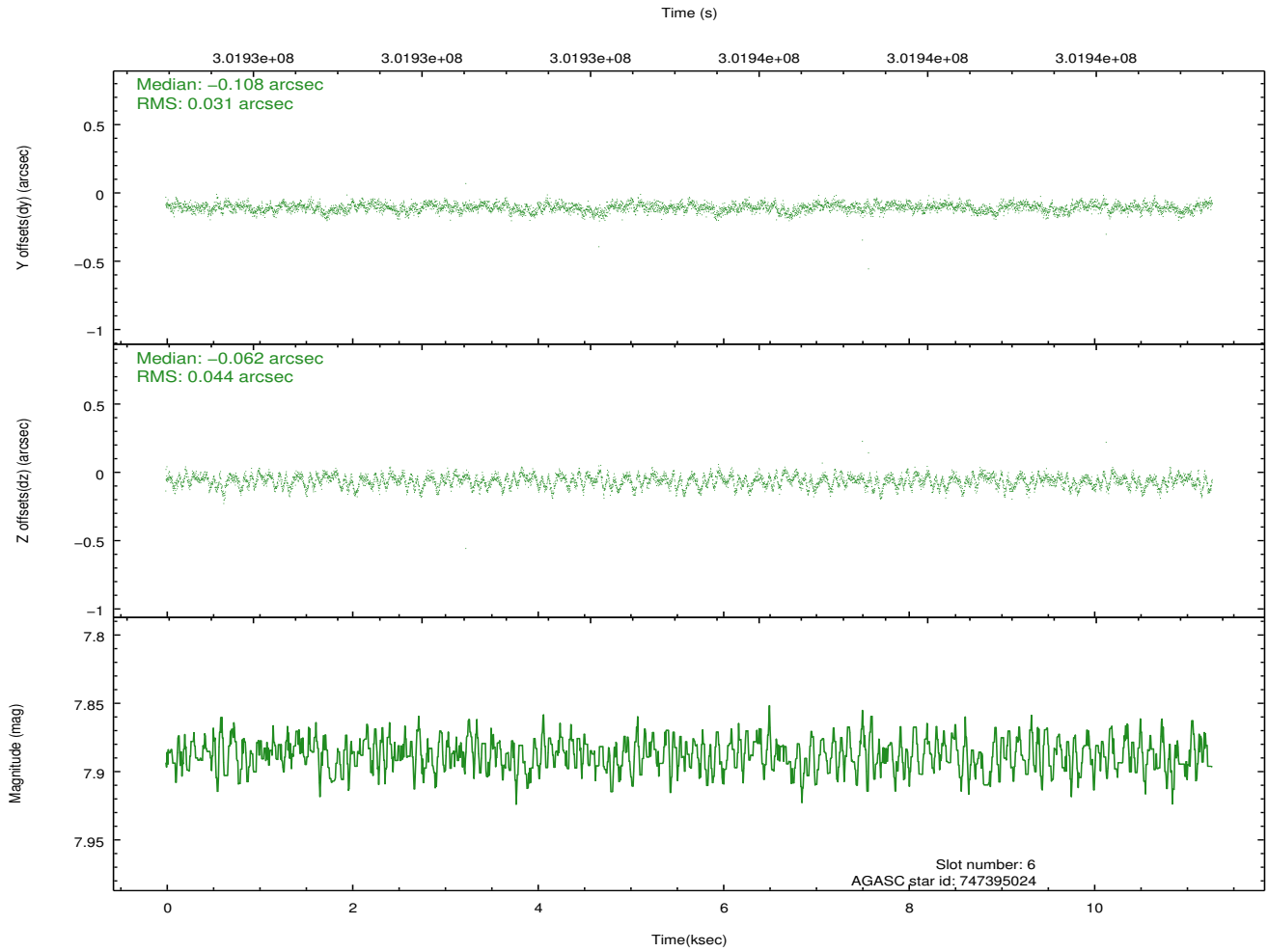
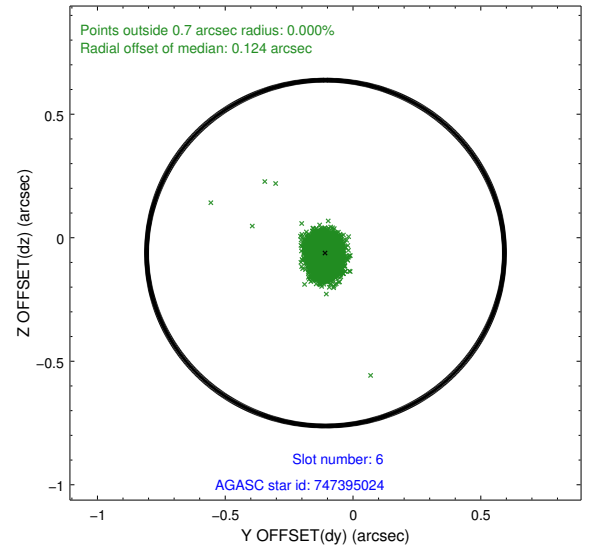
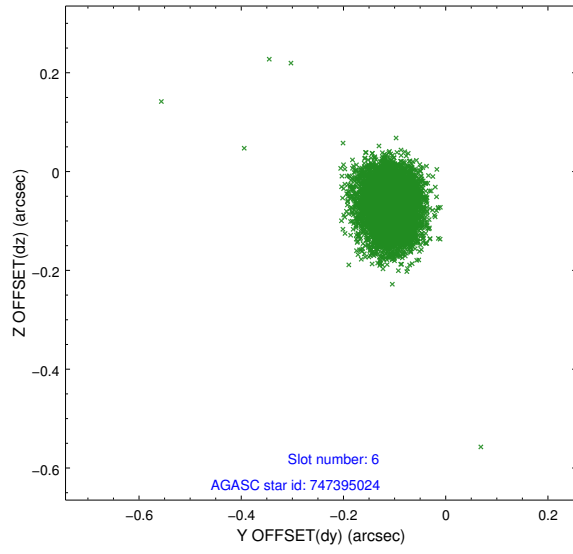
2.4.2 Slot 4



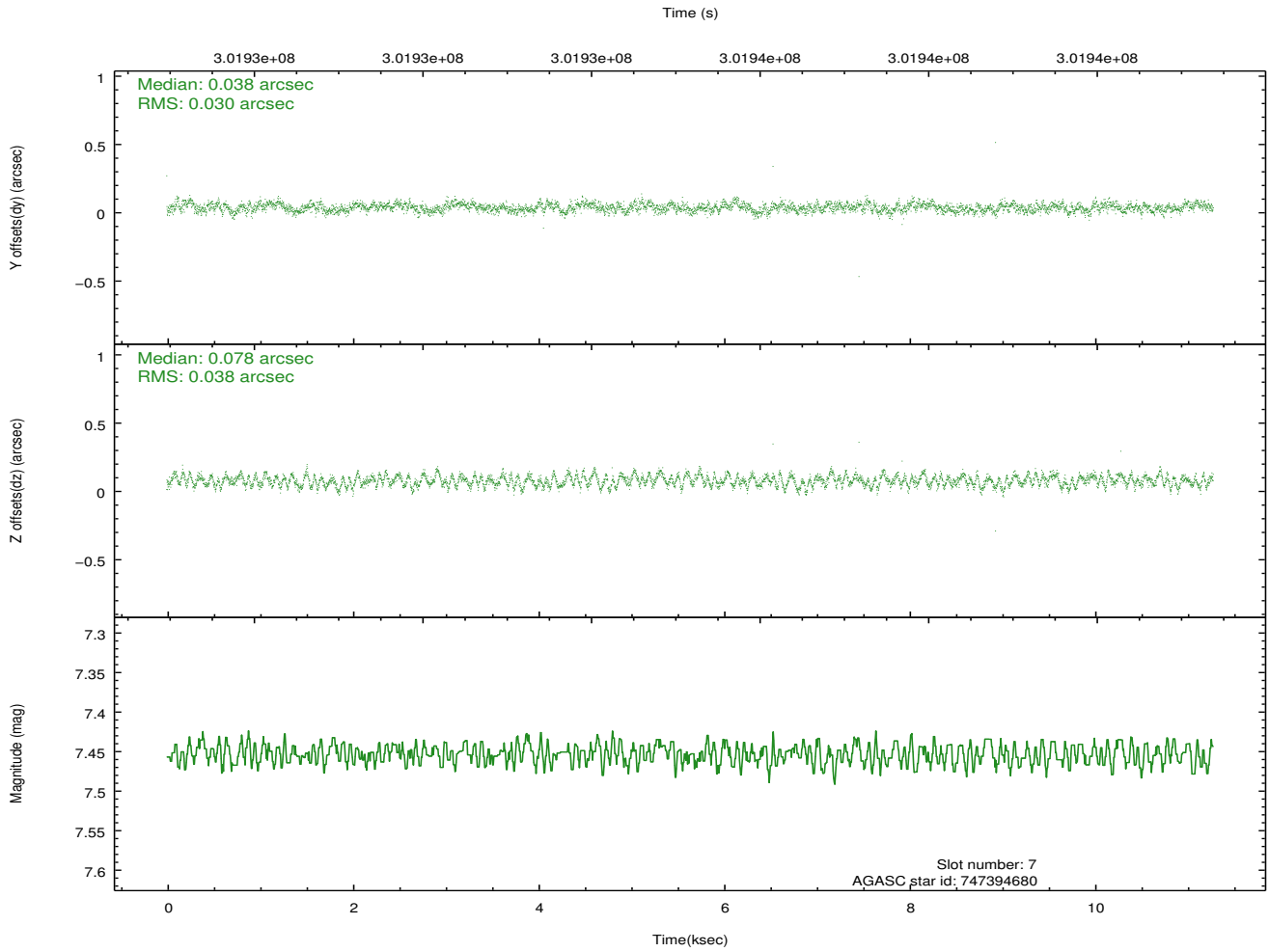
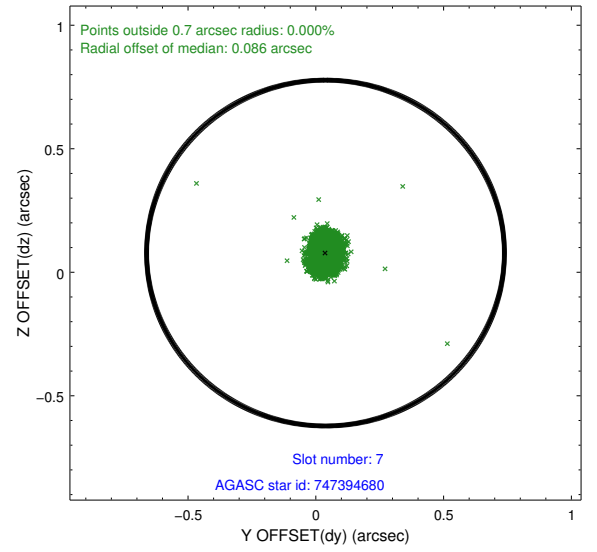
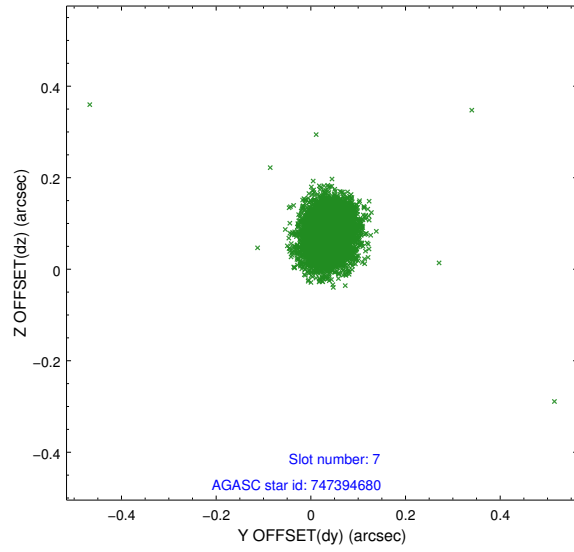
2.4.3 Slot 5



2.4.4 Slot 6

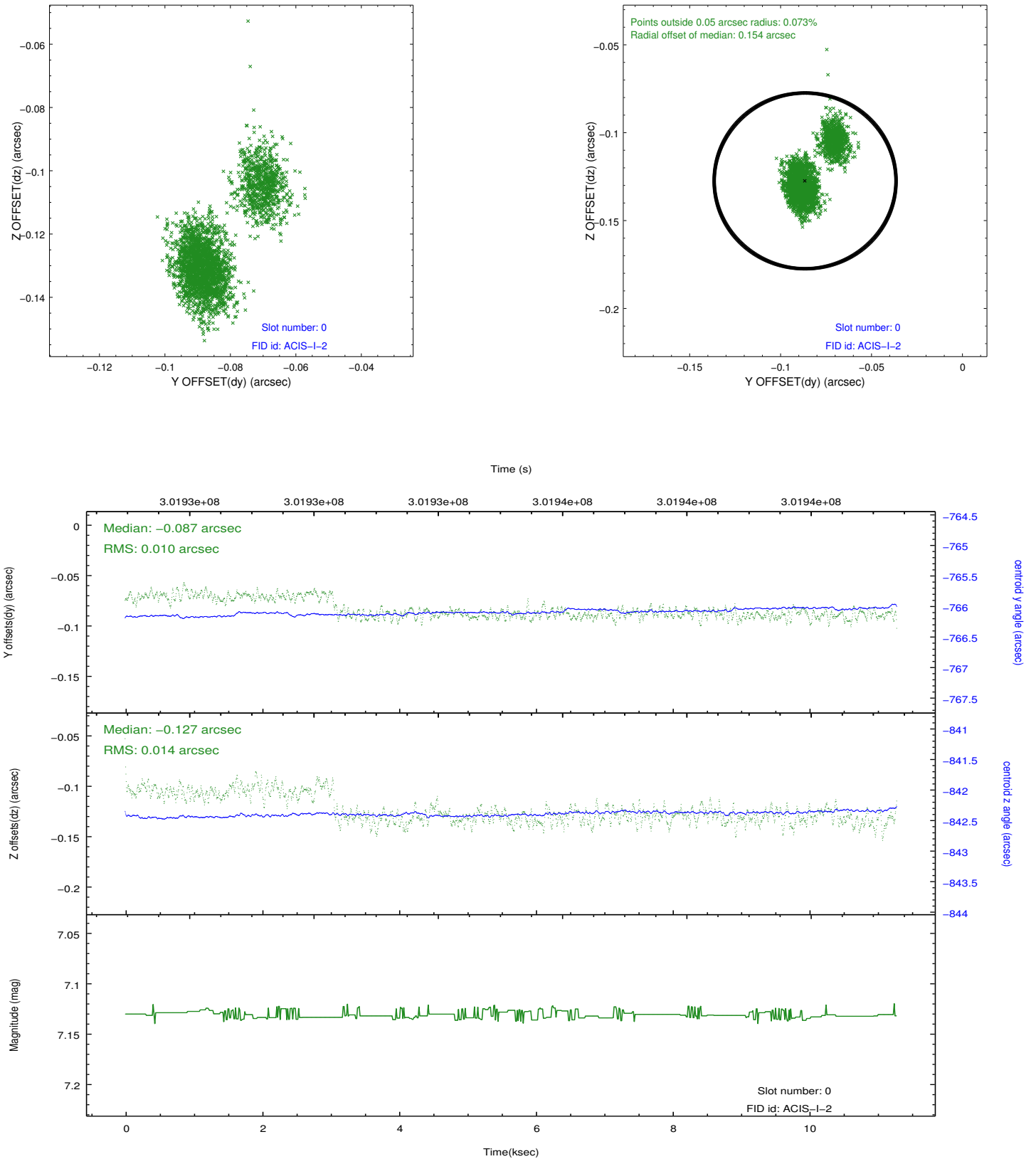


2.4.5 Slot 7

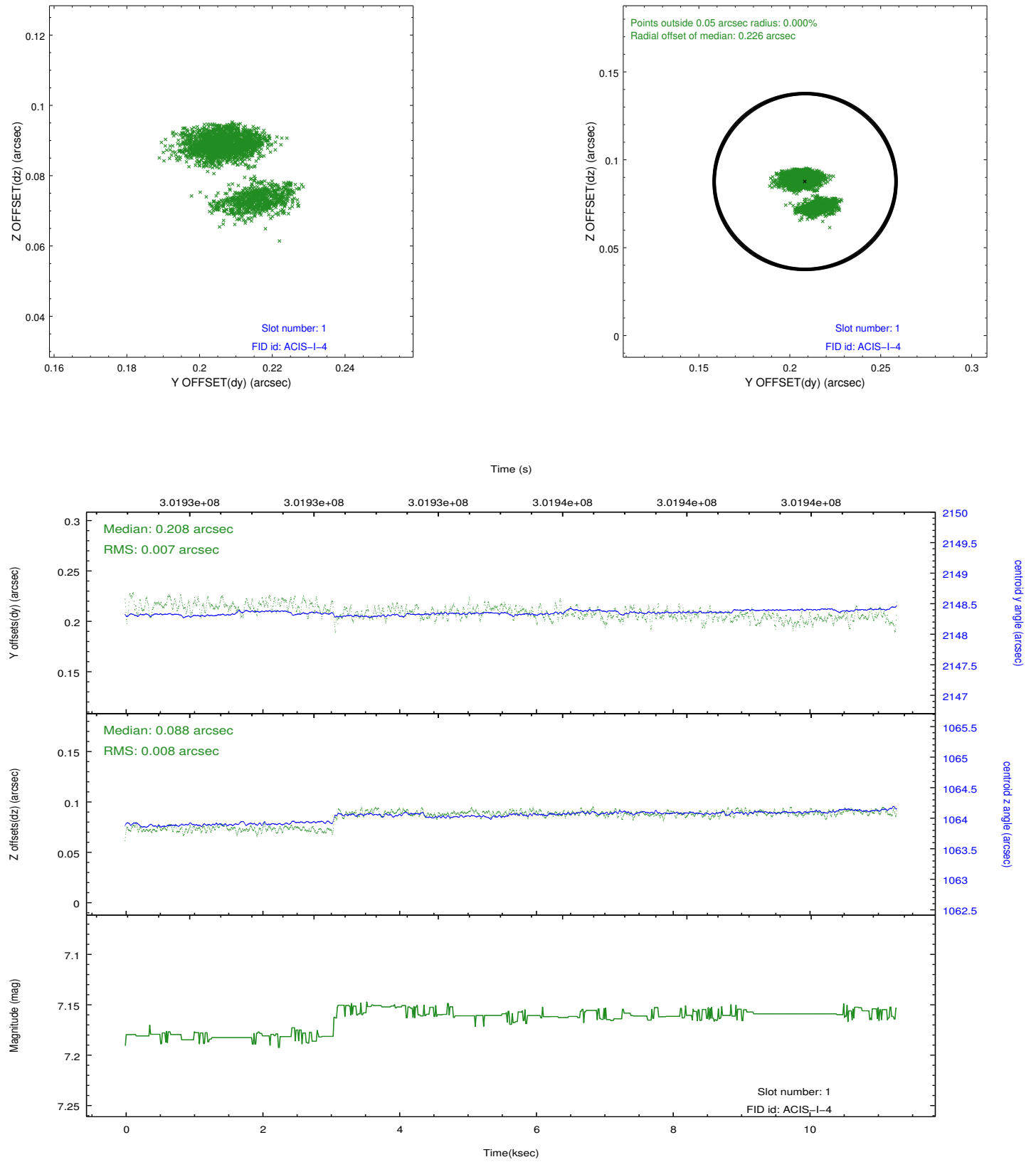


2.5 FID Slots

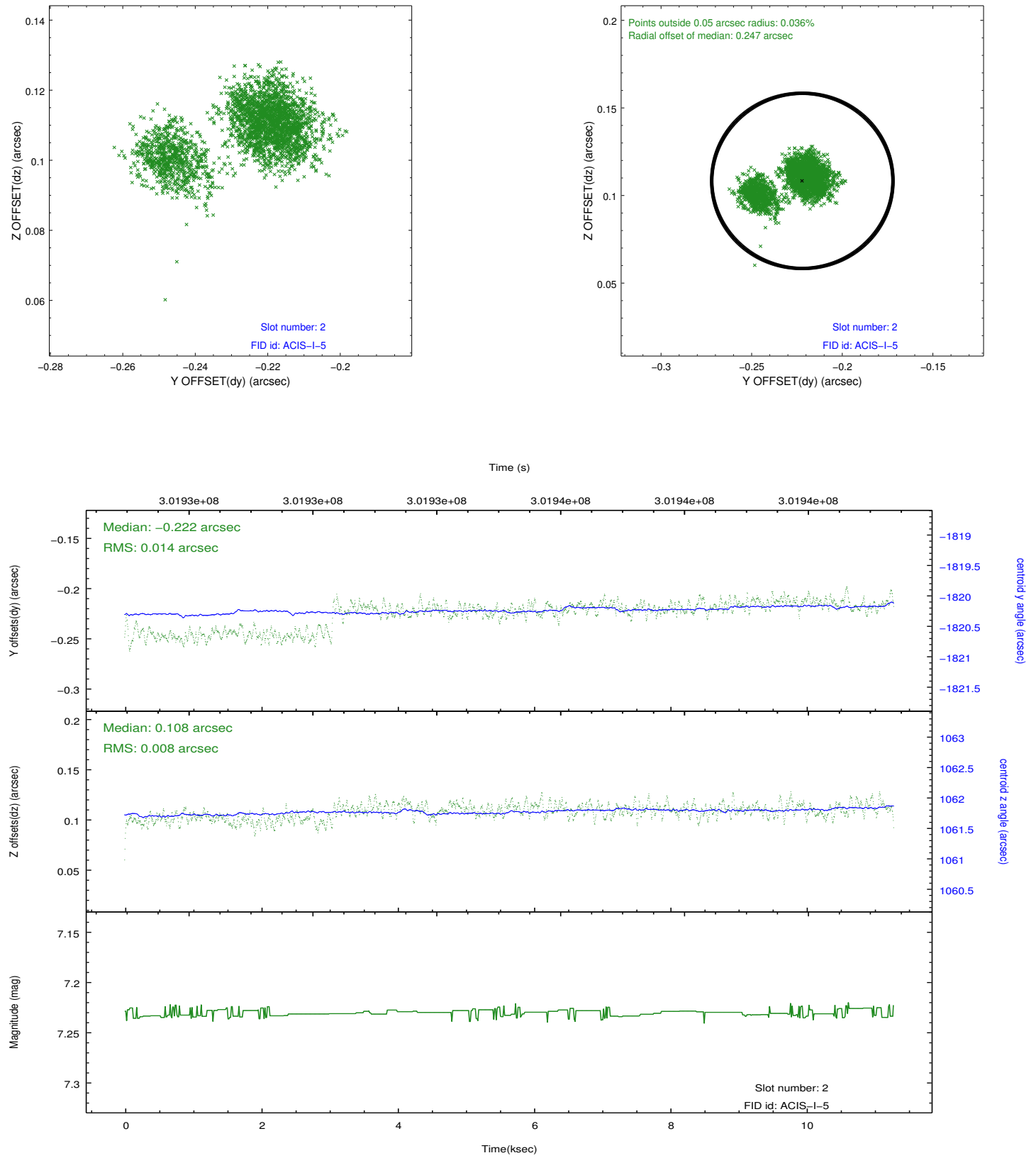
2.5.1 Slot 0



2.5.2 Slot 1



2.5.3 Slot 2



A Summary

A.1 Status

V&V Scientist	Jen Lauer
V&V Date (YYYY-MM-DD)	2012.05.01
V&V Edition	1
V&V Disposition and Status	OK
V&V Charge Time	10.0415999

A.2 Comments

Fid light positions are bi-modal, with a discontinuity in the positions at about 3 ksec into the observation. Fid light positions used in the aspect solution are the centroid of all the positions, but are more accurate for the period starting 3 ksec into the observation and ending at the end of the observation. For the highest accuracy aspect solution, it may be useful to examine the last 7 ksec of the observation separately to see if there is a significant difference in aspect. There is no discontinuity in the guide star positions. There is no obvious reason such as a temperature change in the periscope or HRMA that might account for the fid light discontinuity.