

V&V Reference Report

L2 ASCDS Version : 8.4.3

Observation 7328 - L2 Version 2
Chandra X-Ray Center

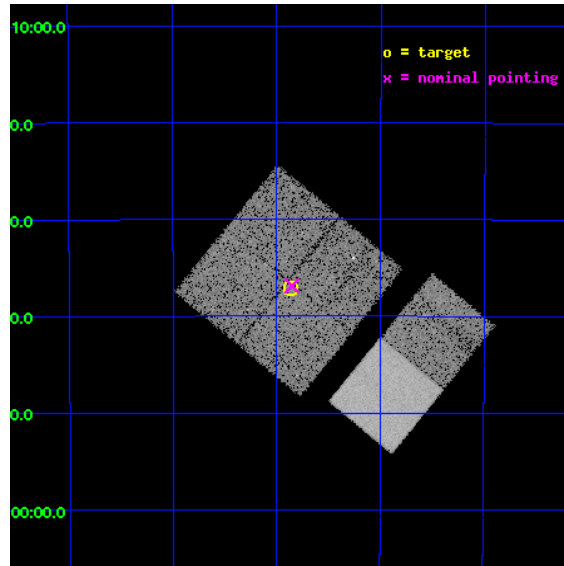
L2 Processing Date : Apr 2 2012

Contents

1	Front	2
2	OBI	3
2.1	OBI	3
2.1.1	Images	3
2.1.2	Bias	3
2.1.3	Parameters	4
2.1.4	Events	4
2.2	Compared Parameters	5
2.3	Aspect	6
2.4	Star Slots	9
2.4.1	Slot 3	9
2.4.2	Slot 4	10
2.4.3	Slot 5	11
2.4.4	Slot 6	12
2.4.5	Slot 7	13
2.5	FID Slots	14
2.5.1	Slot 0	14
2.5.2	Slot 1	15
2.5.3	Slot 2	16
A	Summary	17
A.1	Status	17
A.2	Comments	17

1 Front

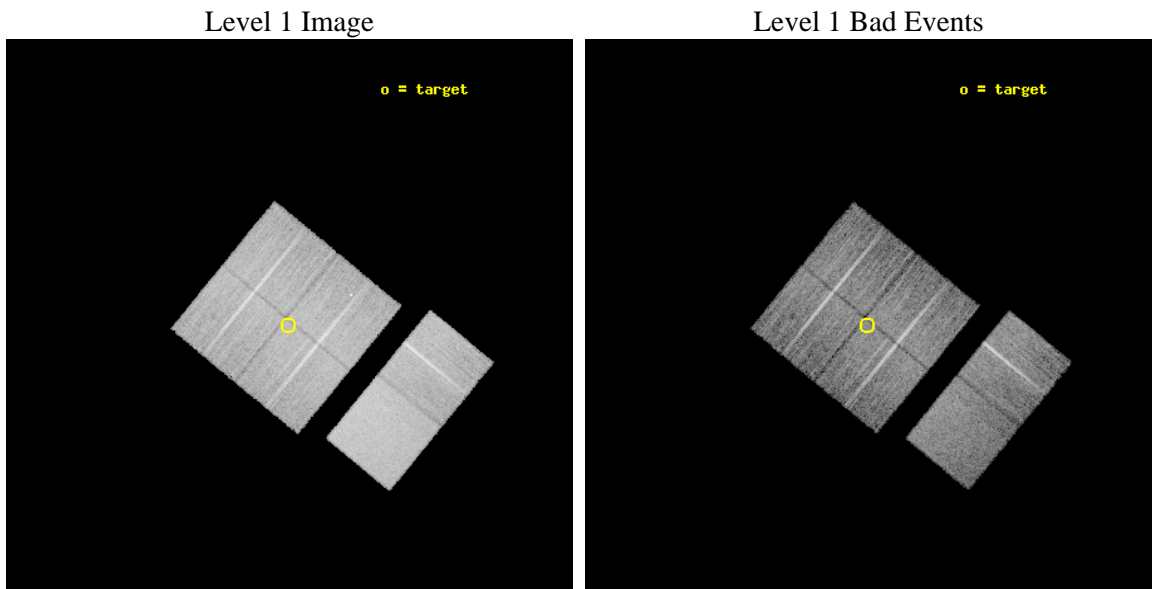
seq_num	900434	Sequence number
obs_id	7328	Observation id
title	The dark side of accretion: chasing type 2 QSOs	Proposal title
observer	Dr Fabrizio Fiore	Principal investigator
object	ELAIS-S1 C	Source name
dtcycle	0	
cycle	P	events from which exps? Prim/Second/Both
ra_targ	8.965	Observer's specified target RA [deg]
dec_targ	-43.619028	Observer's specified target Dec [deg]
ra_nom	8.9632395631022	Nominal RA [deg]
dec_nom	-43.614569921705	Nominal Dec [deg]
roll_nom	129.36795972757	Nominal Roll [deg]
revision	2	Processing version of data
ontime	10131.199962258	Sum of GTIs [s]
livetime	10002.91260806	Livetime [s]
ontime0	10131.199962258	Sum of GTIs [s]
ontime1	10131.199962258	Sum of GTIs [s]
ontime2	10131.199962258	Sum of GTIs [s]
ontime3	10131.199962258	Sum of GTIs [s]
ontime6	10131.199962258	Sum of GTIs [s]
ontime7	10131.199962258	Sum of GTIs [s]
l2events	98132	Number of level 2 events



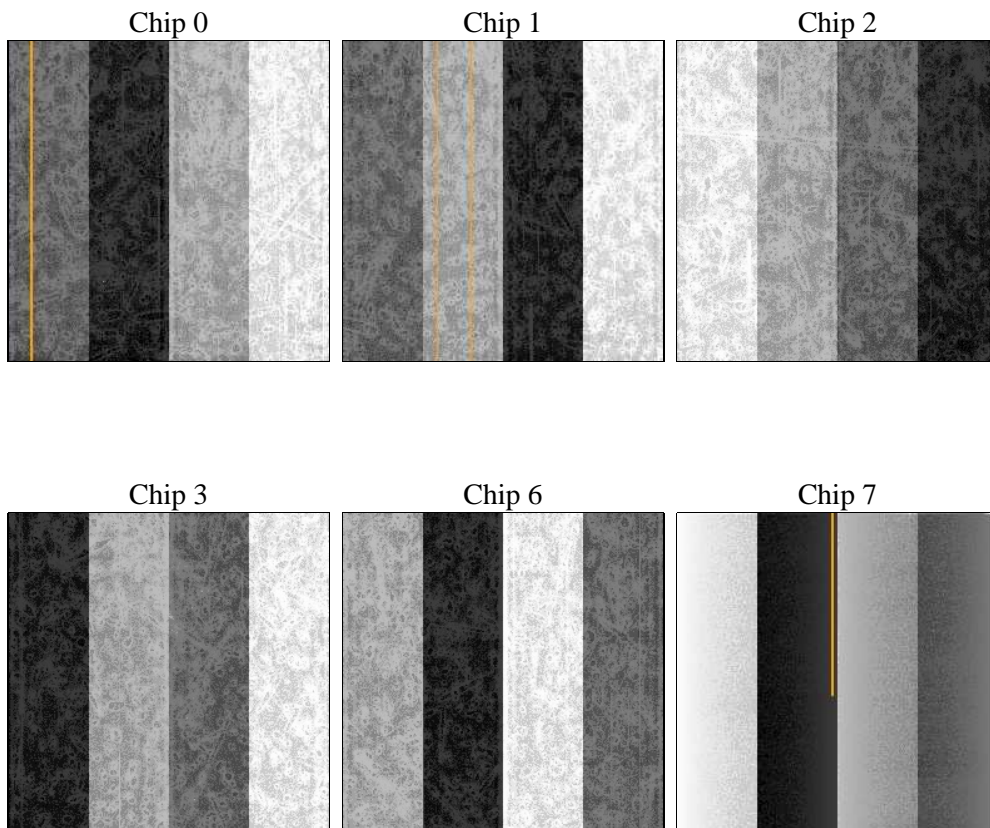
2 OBI

2.1 OBI

2.1.1 Images



2.1.2 Bias



2.1.3 Parameters

obi_num	0	Obi number	sched_exp_time	10000.000000	[s] Scheduled observation exposure time
ascdsver	8.4.3.1	Processing system revision	ontime	10131.199962258	Sum of GTIs [s]
caldsver	4.4.9	 	ontime0	10131.199962258	Sum of GTIs [s]
date	2012-04-02T03:46:19	Date and time of file creation	ontime1	10131.199962258	Sum of GTIs [s]
revision	2	Processing version of data	ontime2	10131.199962258	Sum of GTIs [s]
			ontime3	10131.199962258	Sum of GTIs [s]
			ontime6	10131.199962258	Sum of GTIs [s]
			ontime7	10131.199962258	Sum of GTIs [s]
			l1events	581432	Number of level 1 events

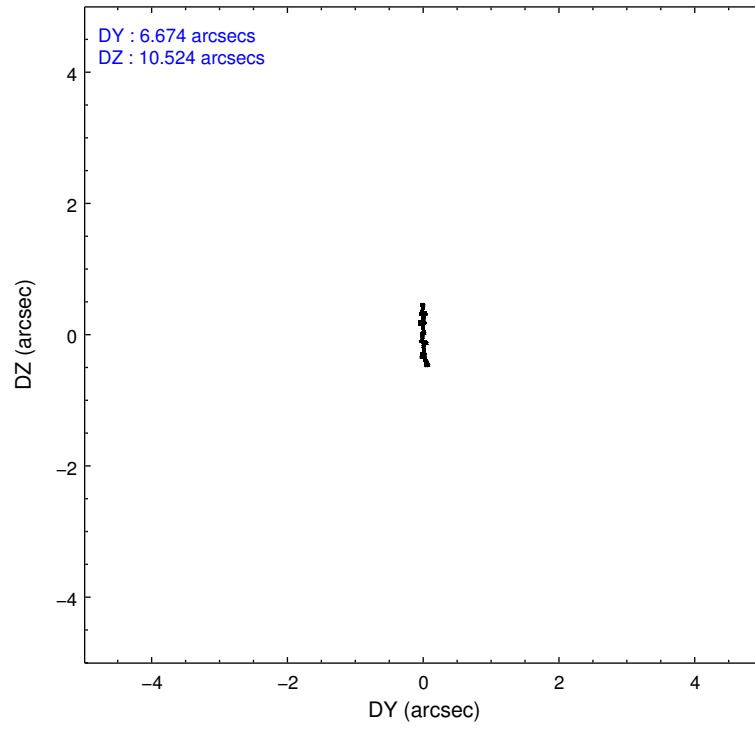
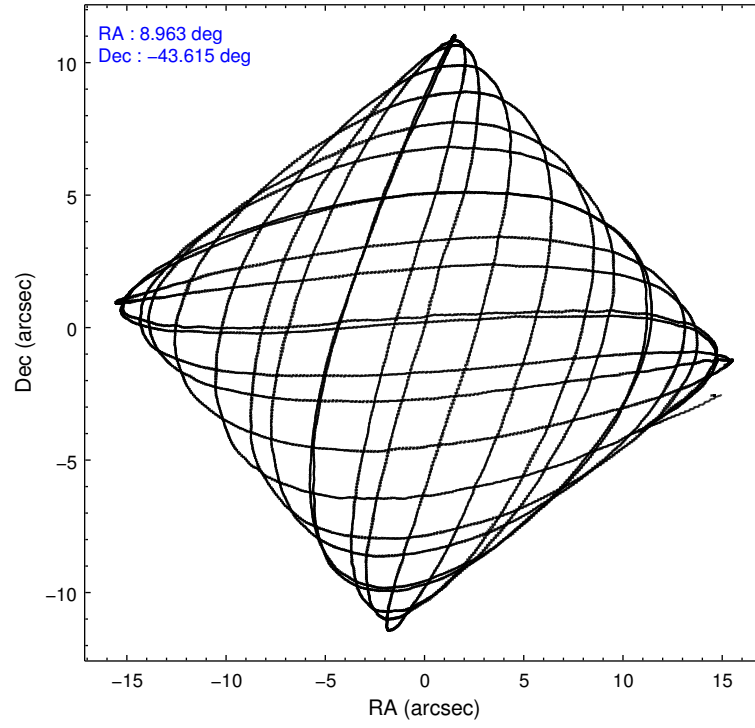
2.1.4 Events

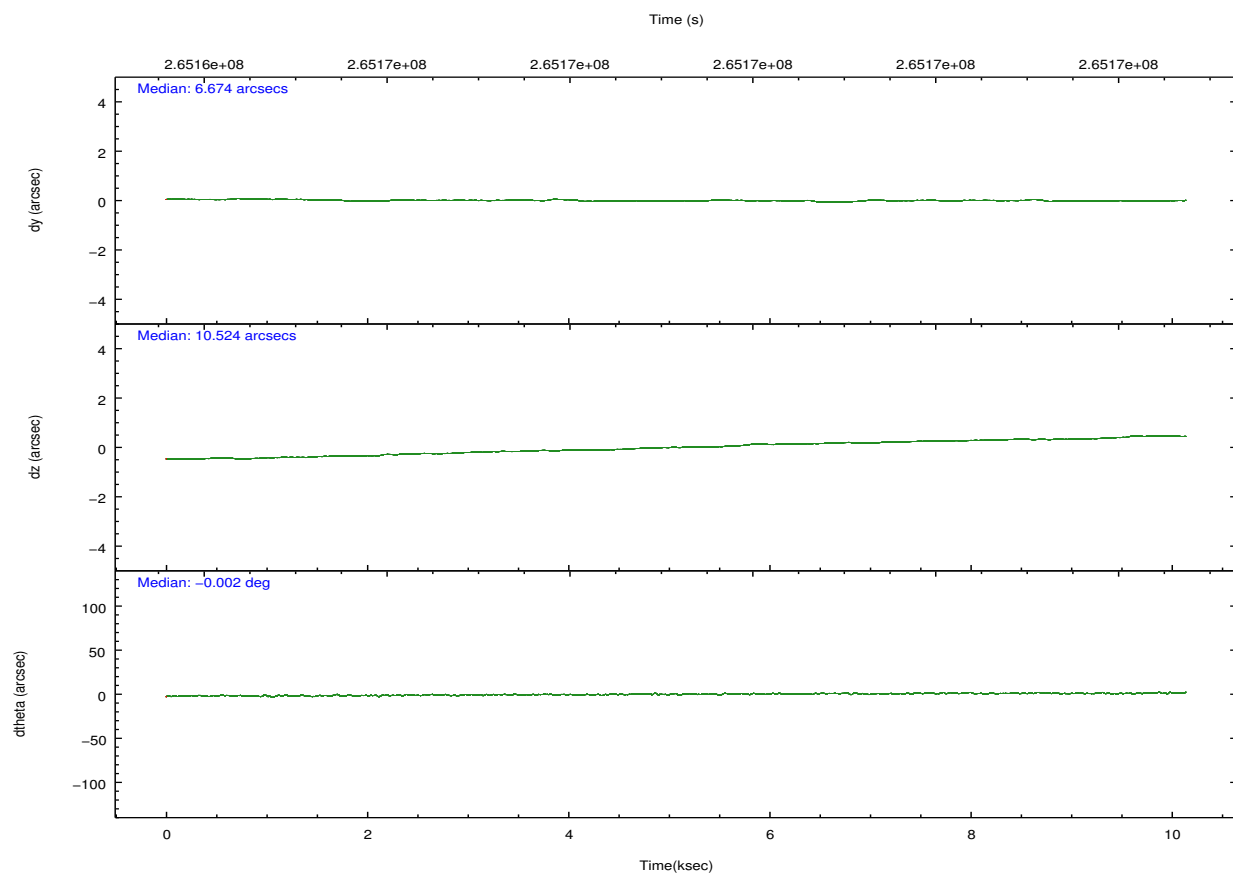
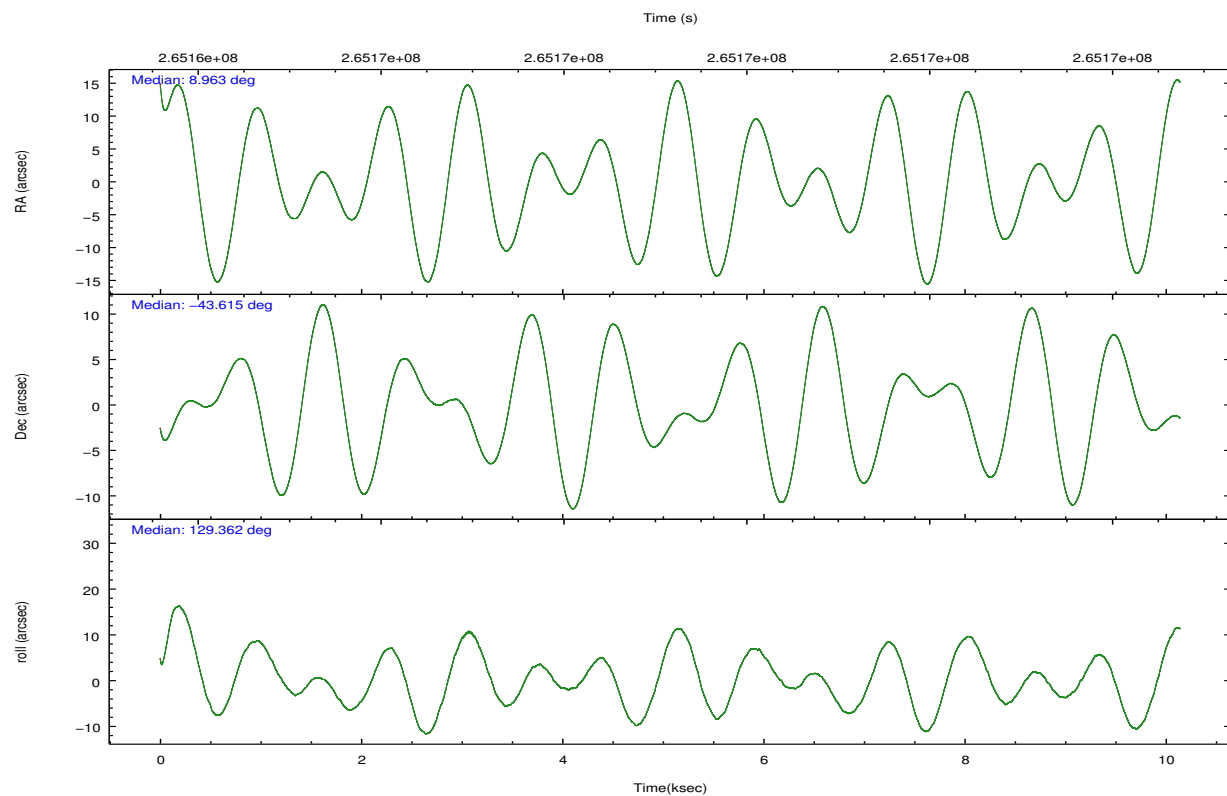
	ccd 0	ccd 1	ccd 2	ccd 3	ccd 6	ccd 7		ccd 0	ccd 1	ccd 2	ccd 3	ccd 6	ccd 7
level 1 events	87469	87411	93600	89360	97263	126329	grade 0 events	4788	4540	5236	4867	4237	4573
rejected events	76359	75737	82446	78459	86233	75069		5%	5%	5%	5%	4%	3%
rejected %	87%	86%	88%	87%	88%	59%	grade 1 events	46	43	55	67	62	117
								0%	0%	0%	0%	0%	0%
							grade 2 events	2504	2696	2320	2145	2480	10622
								2%	3%	2%	2%	2%	8%
							grade 3 events	1064	1136	1004	1075	1088	4387
								1%	1%	1%	1%	1%	3%
							grade 4 events	962	1192	1001	1042	1058	4416
								1%	1%	1%	1%	1%	3%
							grade 5 events	3631	4059	3546	4225	4395	12126
								4%	4%	3%	4%	4%	9%
							grade 6 events	1922	2237	1729	1909	2301	27854
								2%	2%	1%	2%	2%	22%
							grade 7 events	72552	71508	78709	74030	81642	62234
								82%	81%	84%	82%	83%	49%

2.2 Compared Parameters

Parameter	Planned	Actual	Parameter	Planned	Actual
Instrument	ACIS	ACIS	Obspar format version number	7	7
Detector	ACIS-012367	ACIS-012367	Obspar file type	PREDICTED	ACTUAL
Grating	NONE	NONE	Obspar update status	NONE	UPDATED
Data mode	FAINT	FAINT	Number of optional ACIS chips dropped	0	0
Observation mode	POINTING	POINTING	On-chip summing requested	N	N
[deg] Pointing RA	8.998648	8.963239563102206	Subarray requested	NONE	NONE
[deg] Pointing Dec	-43.624122	-43.61456992170457	Alternating exposures requested	N	N
[deg] Pointing Roll	129.183716	129.3679597275685	[s] Primary exposure time	0.000000	3.2
[mm] SIM focus pos	-0.782348	-0.7809083437167272			
[mm] SIM defocus	0	0.001439871863259334			
[mm] SIM translation stage pos	-233.592463	-233.5874344608287			
[mm] SIM translation stage offset	0	-0.005018542100998502			
[s] Observation start time (MET)	265164232.184000	265163127.16926			
Observation start date	2006-05-28T00:42:47	2006-05-28T00:25:27			
[s] Observation end time (MET)	265174232.184000	265175074.56982			
Observation end date	2006-05-28T03:29:27	2006-05-28T03:44:34			
Read mode	TIMED	TIMED			

2.3 Aspect



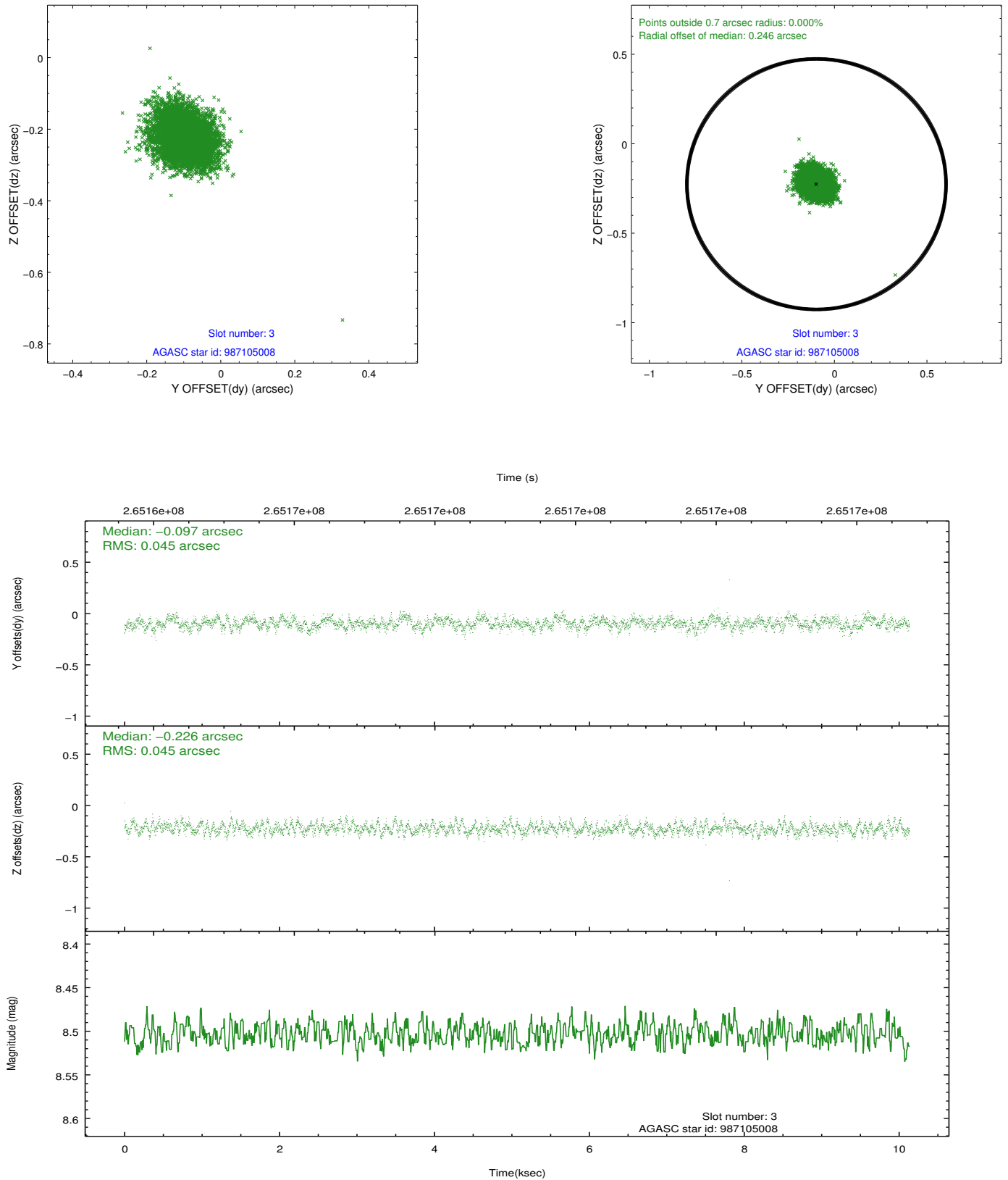


Slot Statistics

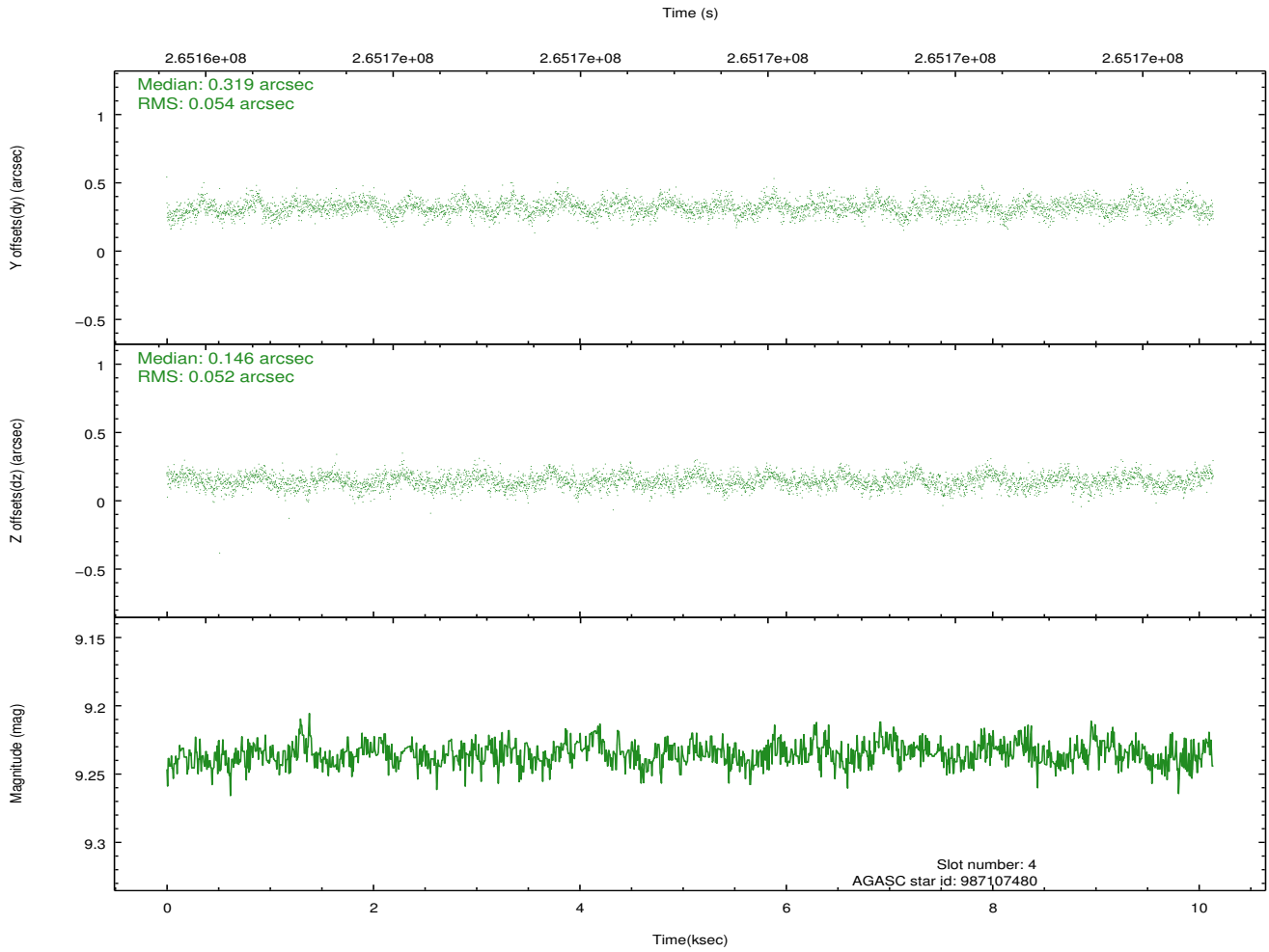
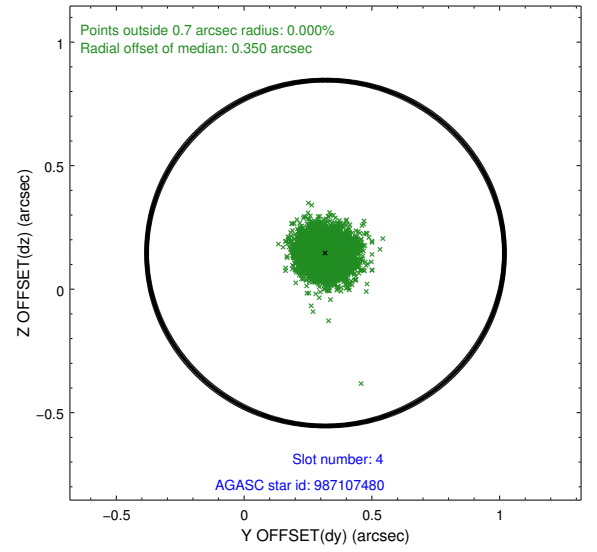
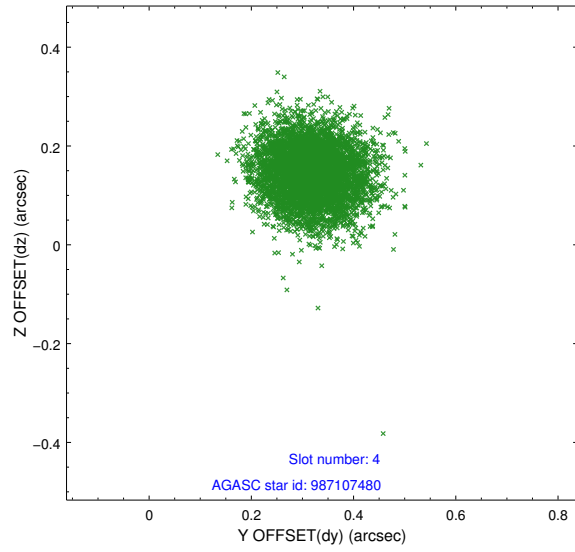
slot	status	id	mag	n_pts	med_dy	med_dz	dr1	dr2	ra	dec	mean_y	mean_z
0	FID	ACIS-I-1	7.24	2474	0.021	-0.019	0.017	0.028	0.000000	0.000000	933.03	-834.02
1	FID	ACIS-I-5	7.23	2473	-0.150	0.038	0.009	0.015	0.000000	0.000000	-1814.95	1063.28
2	FID	ACIS-I-6	7.25	2473	0.038	0.052	0.012	0.018	0.000000	0.000000	398.04	1708.37
3	GUIDE	987105008	8.50	4947	-0.097	-0.226	0.068	0.108	8.512368	-44.078521	-476.40	2010.67
4	GUIDE	987107480	9.24	4939	0.319	0.146	0.080	0.128	9.652904	-44.008109	-2146.53	-434.92
5	GUIDE	987107696	7.61	4947	-0.026	0.197	0.062	0.097	9.721255	-43.295694	-286.12	-2208.90
6	GUIDE	987104528	7.89	4945	-0.147	-0.191	0.060	0.098	7.827041	-43.606390	1962.13	2340.44
7	GUIDE	987105472	8.93	4946	-0.052	0.077	0.072	0.119	9.076108	-43.240154	943.97	-1029.11

2.4 Star Slots

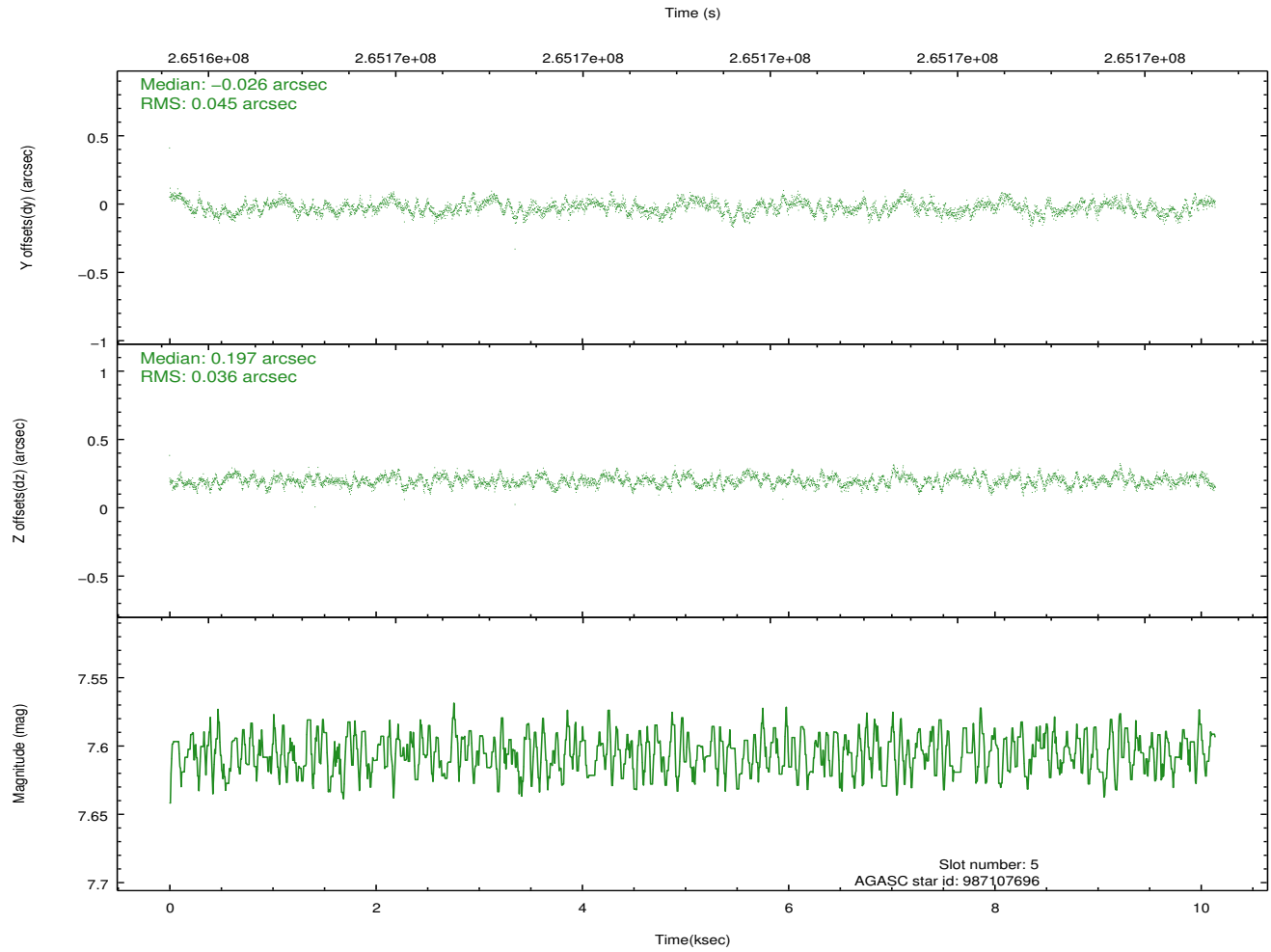
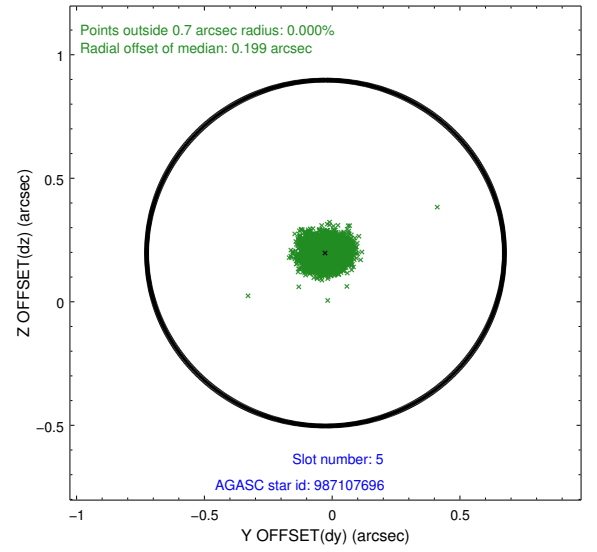
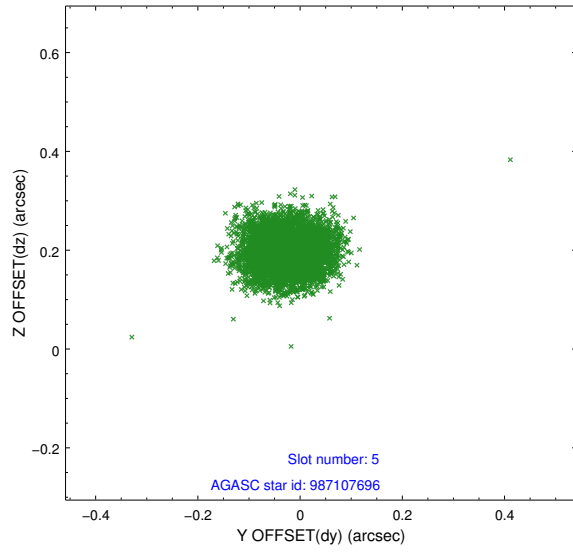
2.4.1 Slot 3



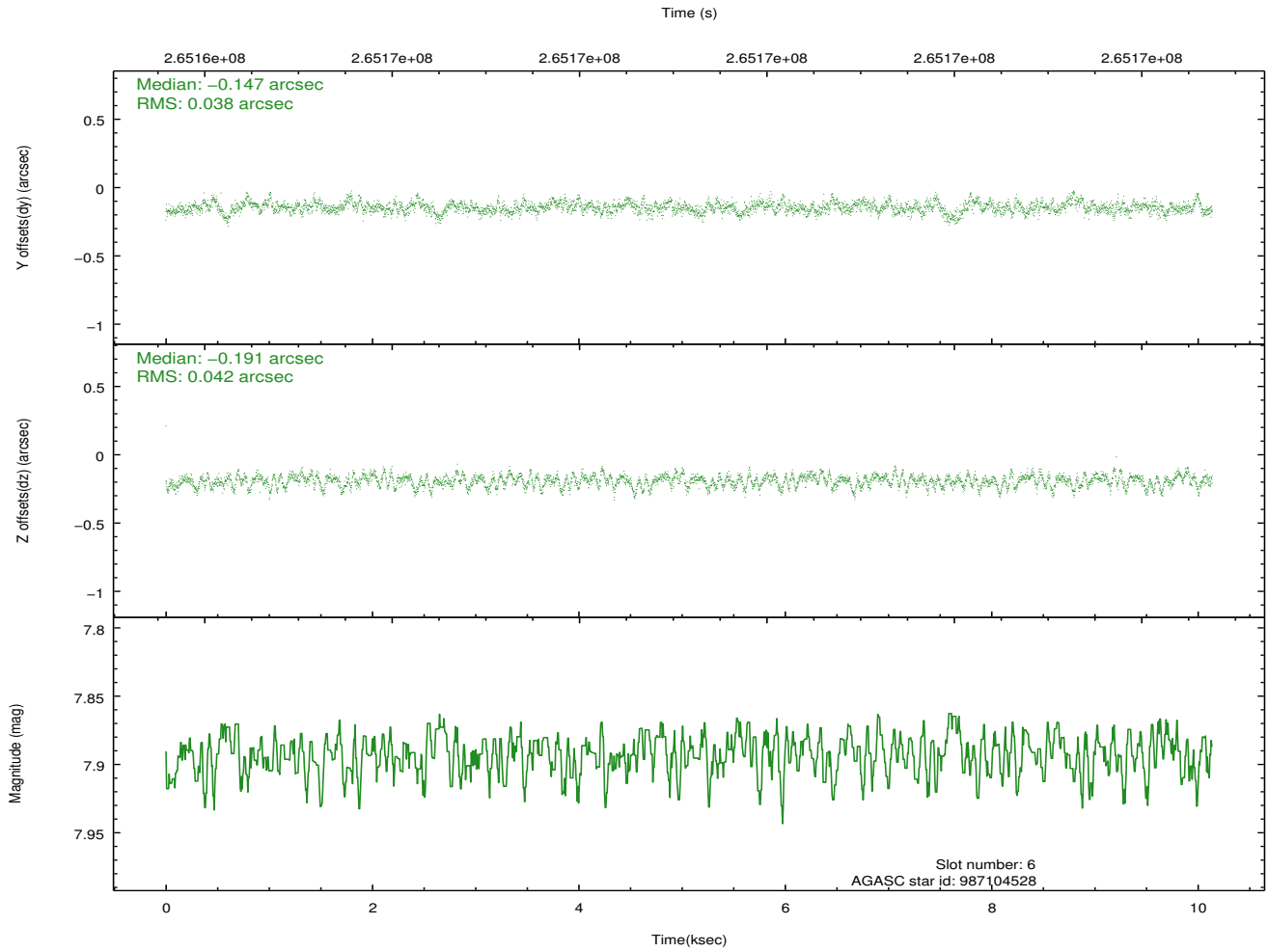
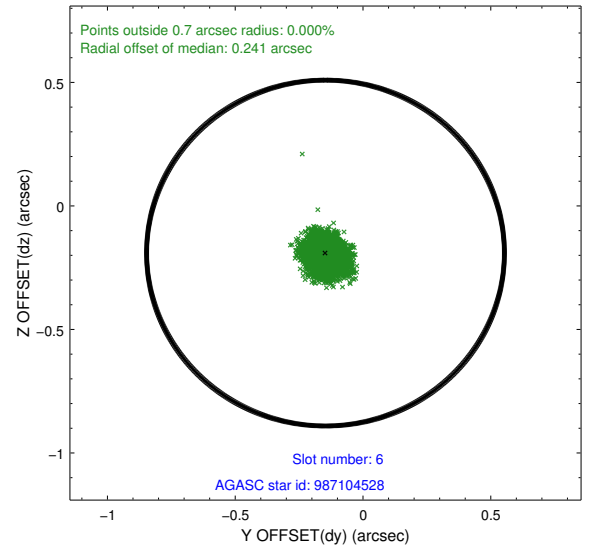
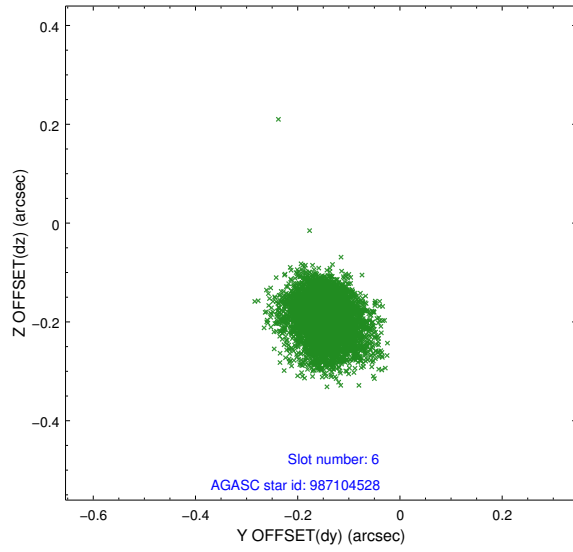
2.4.2 Slot 4



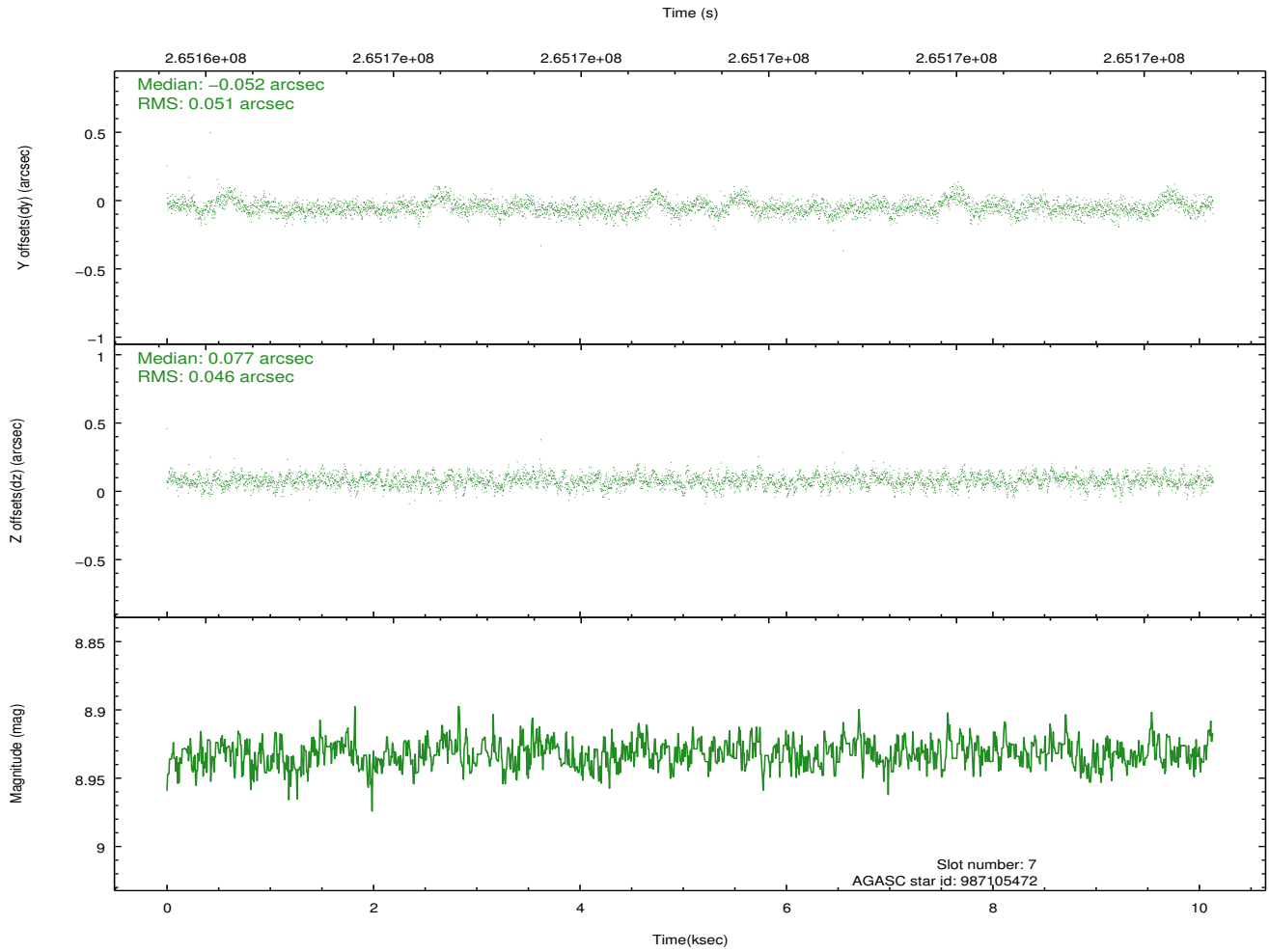
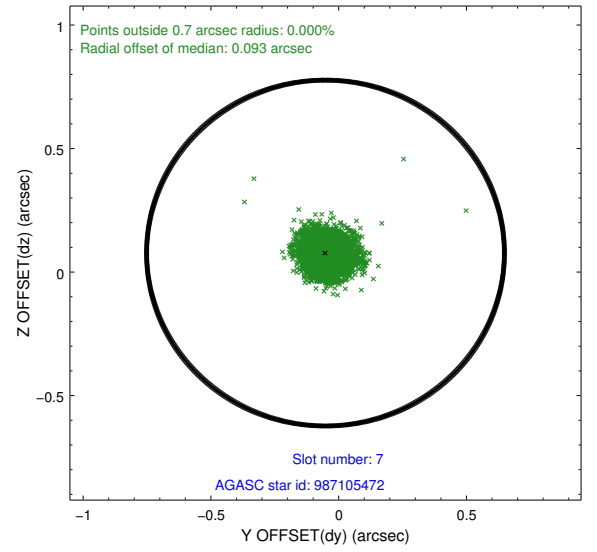
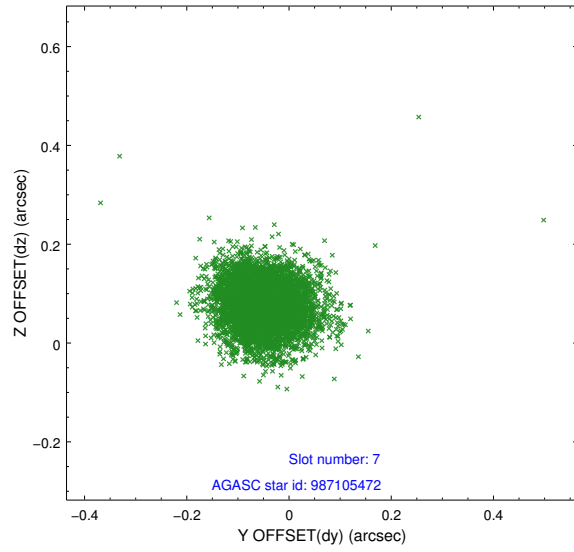
2.4.3 Slot 5



2.4.4 Slot 6

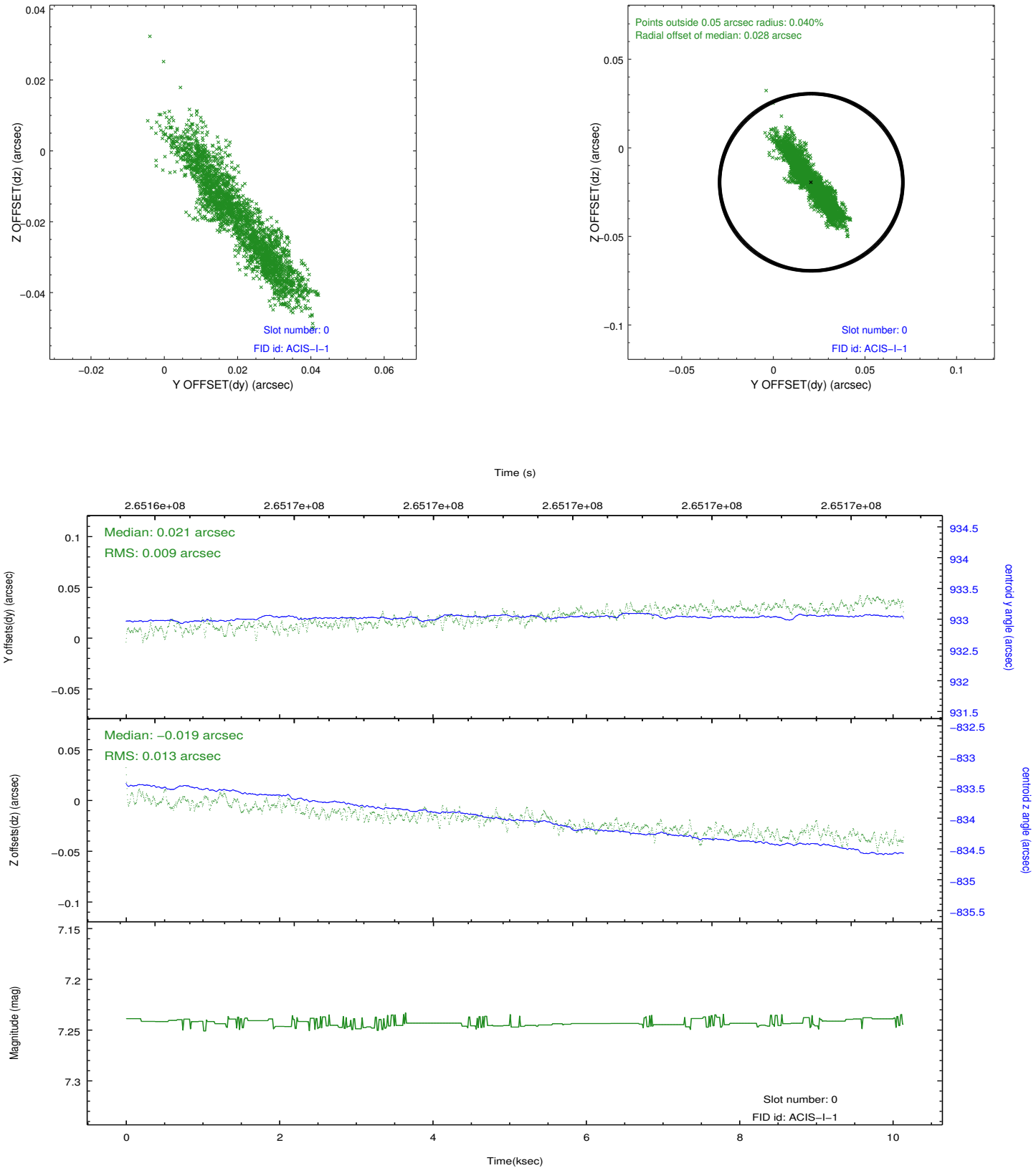


2.4.5 Slot 7

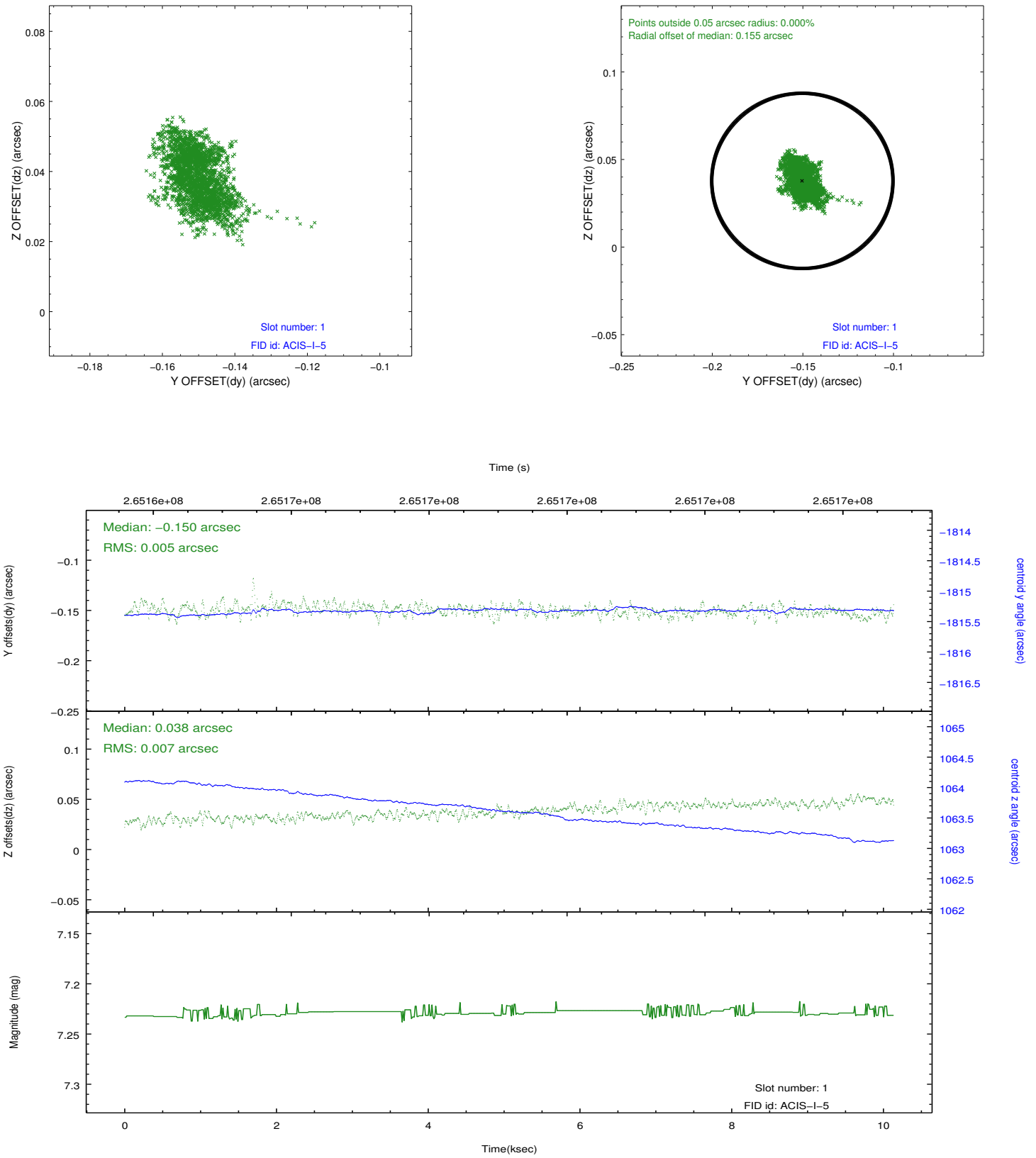


2.5 FID Slots

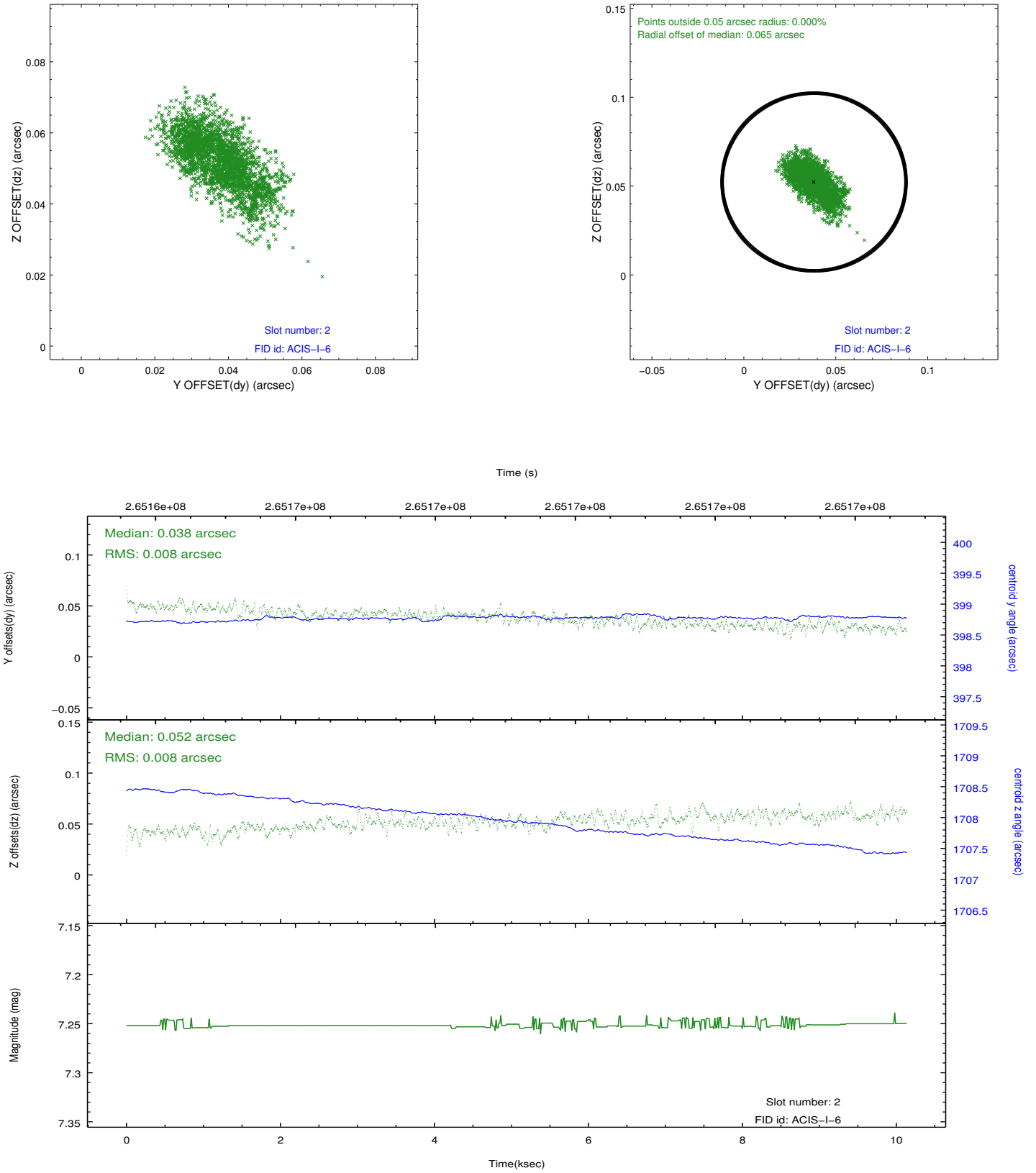
2.5.1 Slot 0



2.5.2 Slot 1



2.5.3 Slot 2



A Summary

A.1 Status

V&V Scientist	Beth Sundheim
V&V Date (YYYY-MM-DD)	2012.04.03
V&V Edition	1
V&V Disposition and Status	OK
V&V Charge Time	10.1311999

A.2 Comments